

Data Path : Z:\pestpcbsrv\HPCHEM1\ECD\_R\Data\PR081219\  
 Data File : PR040302.D  
 Signal(s) : Signal #1: ECD1A.ch Signal #2: ECD2B.ch  
 Acq On : 12 Aug 2019 18:38  
 Operator : SM\AJ  
 Sample : K4228-17  
 Misc :  
 ALS Vial : 27 Sample Multiplier: 1

Instrument :  
 ECD\_R  
 ClientSampleId :  
 2S-I1-I4-COMP-(1)

Integration File signal 1: autoint1.e  
 Integration File signal 2: autoint2.e  
 Quant Time: Aug 13 04:27:07 2019  
 Quant Method : Z:\pestpcbsrv\HPCHEM1\ECD\_R\Method\PR081019.M  
 Quant Title : GC EXTRACTABLES  
 QLast Update : Sat Aug 10 07:38:17 2019  
 Response via : Initial Calibration  
 Integrator: ChemStation

Volume Inj. : 2 µl  
 Signal #1 Phase : ZB-MR1 Signal #2 Phase: ZB-MR2  
 Signal #1 Info : 30Mx0.32mmx 0.50µ Signal #2 Info : 30M x 0.32mm x 0.25µm

Compound	RT#1	RT#2	Resp#1	Resp#2	ng/ml	ng/ml
-----						
System Monitoring Compounds						
1) SA Tetrachlo...	3.747	4.590	47641222	226.6E6	19.880	21.769
2) SA Decachlor...	8.676	10.312	27649334	116.1E6	11.362	13.263

Target Compounds

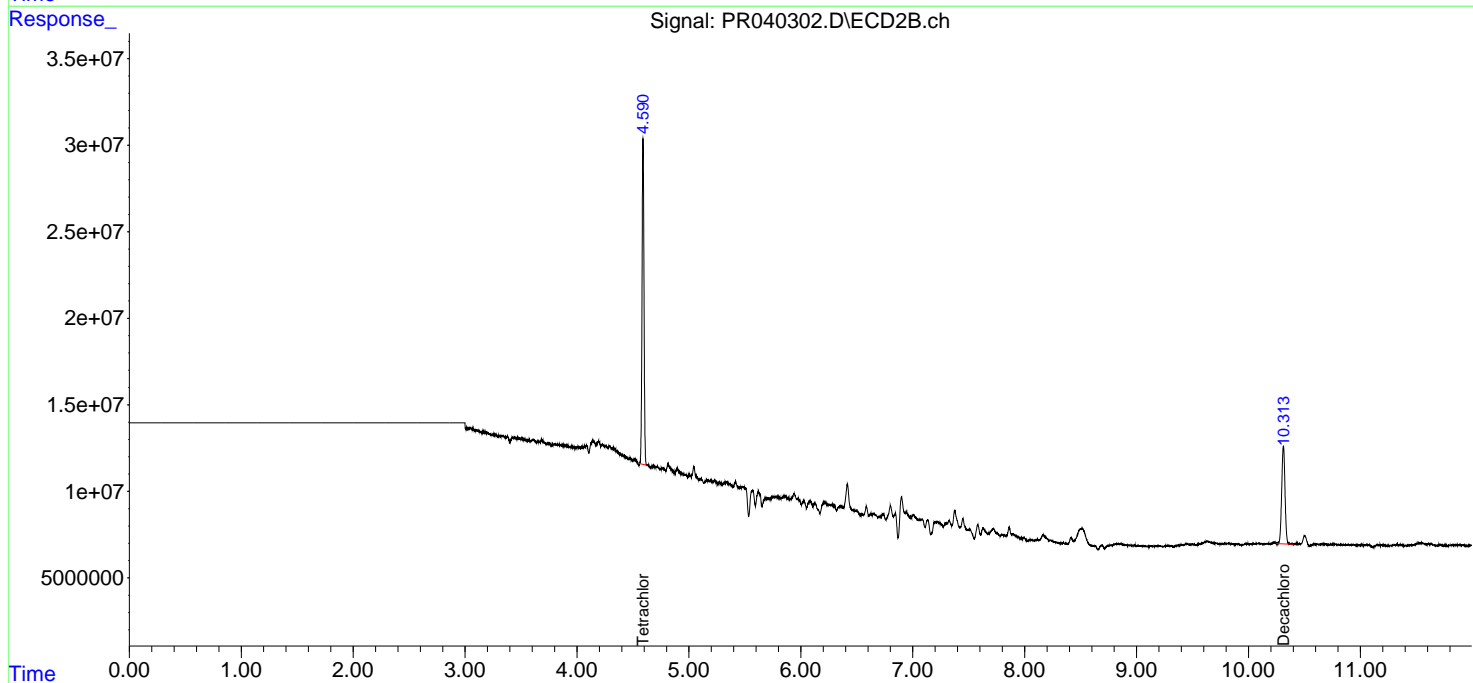
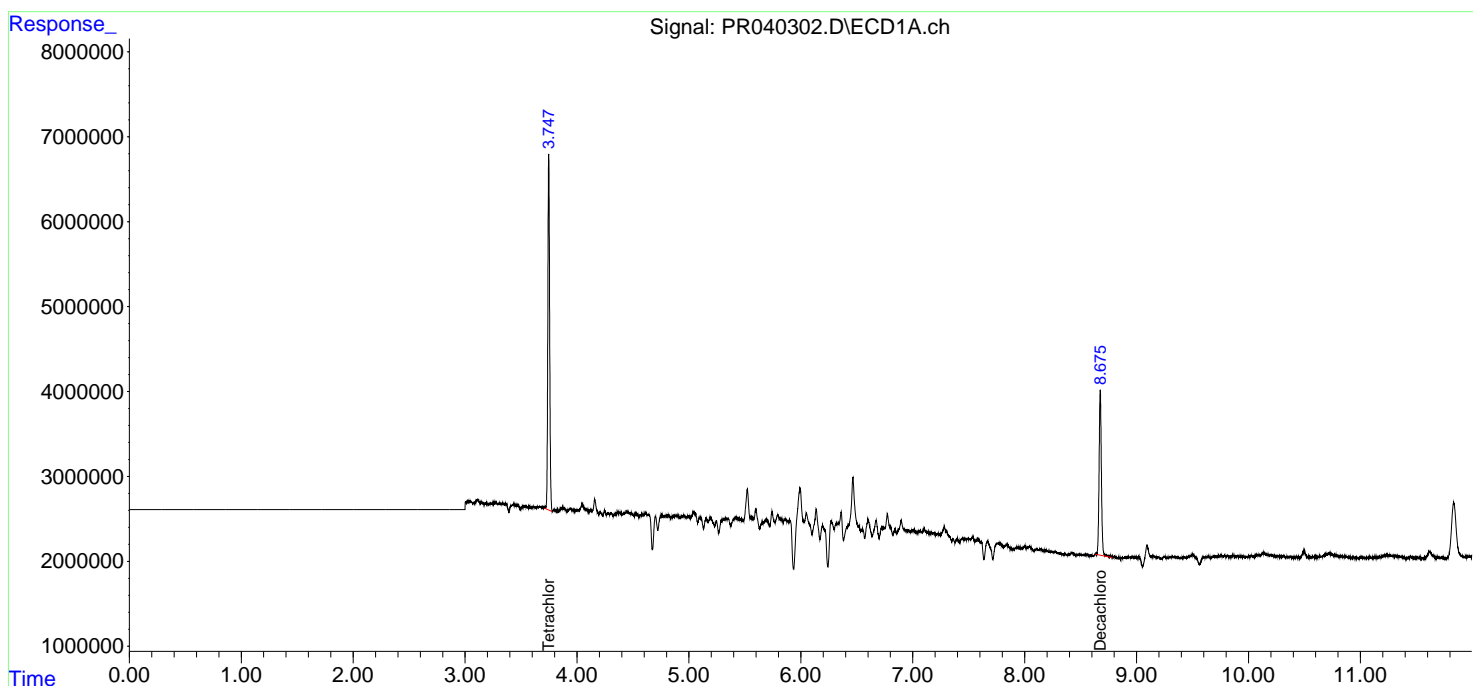
(f)=RT Delta > 1/2 Window (#)=Amounts differ by > 25% (m)=manual int.

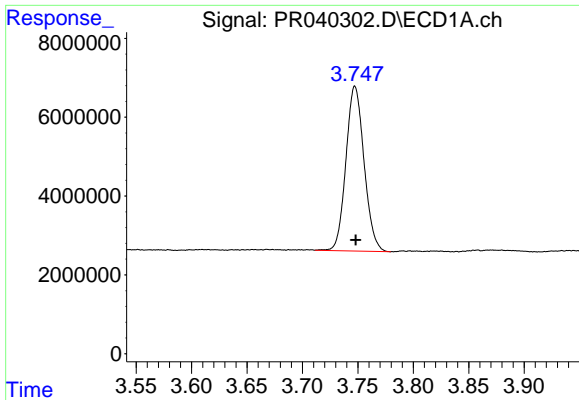
Data Path : Z:\pestpcbsrv\HPCHEM1\ECD\_R\Data\PR081219\  
 Data File : PR040302.D  
 Signal(s) : Signal #1: ECD1A.ch Signal #2: ECD2B.ch  
 Acq On : 12 Aug 2019 18:38  
 Operator : SM\AJ  
 Sample : K4228-17  
 Misc :  
 ALS Vial : 27 Sample Multiplier: 1

Instrument :  
 ECD\_R  
 ClientSampleId :  
 2S-11-14-COMP-(1)

Integration File signal 1: autoint1.e  
 Integration File signal 2: autoint2.e  
 Quant Time: Aug 13 04:27:07 2019  
 Quant Method : Z:\pestpcbsrv\HPCHEM1\ECD\_R\Method\PR081019.M  
 Quant Title : GC EXTRACTABLES  
 QLast Update : Sat Aug 10 07:38:17 2019  
 Response via : Initial Calibration  
 Integrator: ChemStation

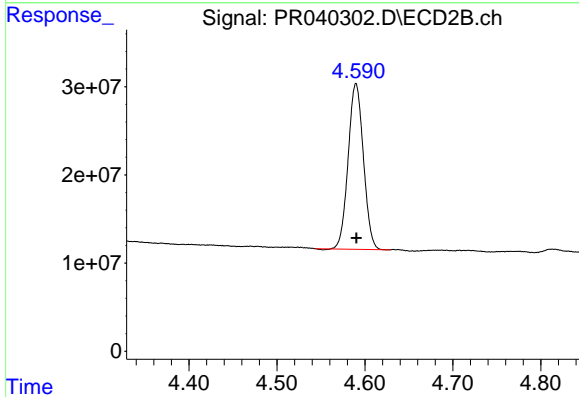
Volume Inj. : 2 µl  
 Signal #1 Phase : ZB-MR1 Signal #2 Phase: ZB-MR2  
 Signal #1 Info : 30Mx0.32mmx 0.50µm Signal #2 Info : 30M x 0.32mm x 0.25µm



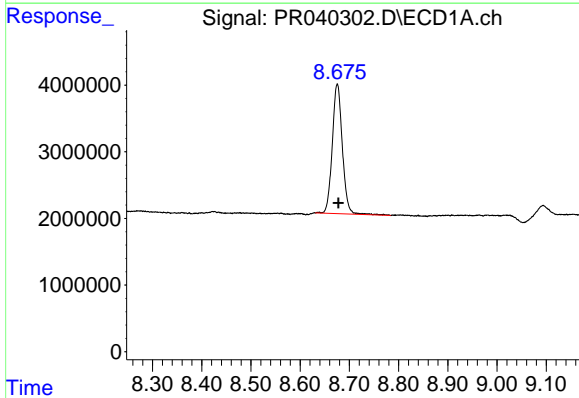


#1 Tetrachloro-m-xylene  
 R.T.: 3.747 min  
 Delta R.T.: 0.000 min  
 Response: 47641222  
 Conc: 19.88 ng/ml

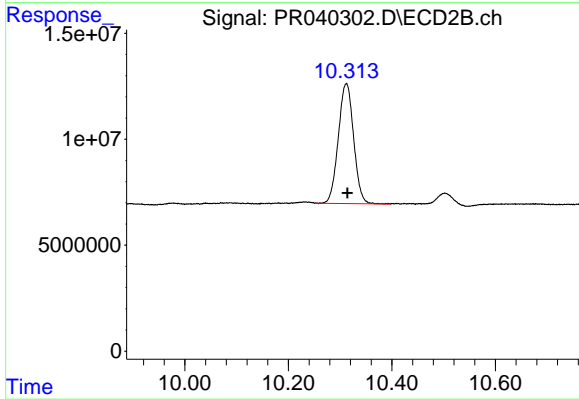
Instrument :  
 ECD\_R  
 ClientSampleId :  
 2S-11-14-COMP-(1)



#1 Tetrachloro-m-xylene  
 R.T.: 4.590 min  
 Delta R.T.: 0.000 min  
 Response: 226640099  
 Conc: 21.77 ng/ml



#2 Decachlorobiphenyl  
 R.T.: 8.676 min  
 Delta R.T.: -0.002 min  
 Response: 27649334  
 Conc: 11.36 ng/ml



#2 Decachlorobiphenyl  
 R.T.: 10.312 min  
 Delta R.T.: -0.002 min  
 Response: 116149615  
 Conc: 13.26 ng/ml