

Data Path : Z:\pestpcbsrv\HPCHEM1\ECD_R\Data\PR081219\
 Data File : PR040311.D
 Signal(s) : Signal #1: ECD1A.ch Signal #2: ECD2B.ch
 Acq On : 12 Aug 2019 20:49
 Operator : SM\AJ
 Sample : K4230-12
 Misc :
 ALS Vial : 36 Sample Multiplier: 1

Instrument :
 ECD_R
 ClientSampleId :
 2S-J-(0-1)-COMP

Integration File signal 1: autoint1.e
 Integration File signal 2: autoint2.e
 Quant Time: Aug 13 04:33:23 2019
 Quant Method : Z:\pestpcbsrv\HPCHEM1\ECD_R\Method\PR081019.M
 Quant Title : GC EXTRACTABLES
 QLast Update : Sat Aug 10 07:38:17 2019
 Response via : Initial Calibration
 Integrator: ChemStation

Volume Inj. : 2 µl
 Signal #1 Phase : ZB-MR1 Signal #2 Phase: ZB-MR2
 Signal #1 Info : 30Mx0.32mmx 0.50µ Signal #2 Info : 30M x 0.32mm x 0.25µm

Compound	RT#1	RT#2	Resp#1	Resp#2	ng/ml	ng/ml

System Monitoring Compounds						
1) SA Tetrachlo...	3.745	4.589	59997237	293.2E6	25.036	28.160
2) SA Decachlor...	8.675	10.310	33962236	149.7E6	13.956	17.097

Target Compounds

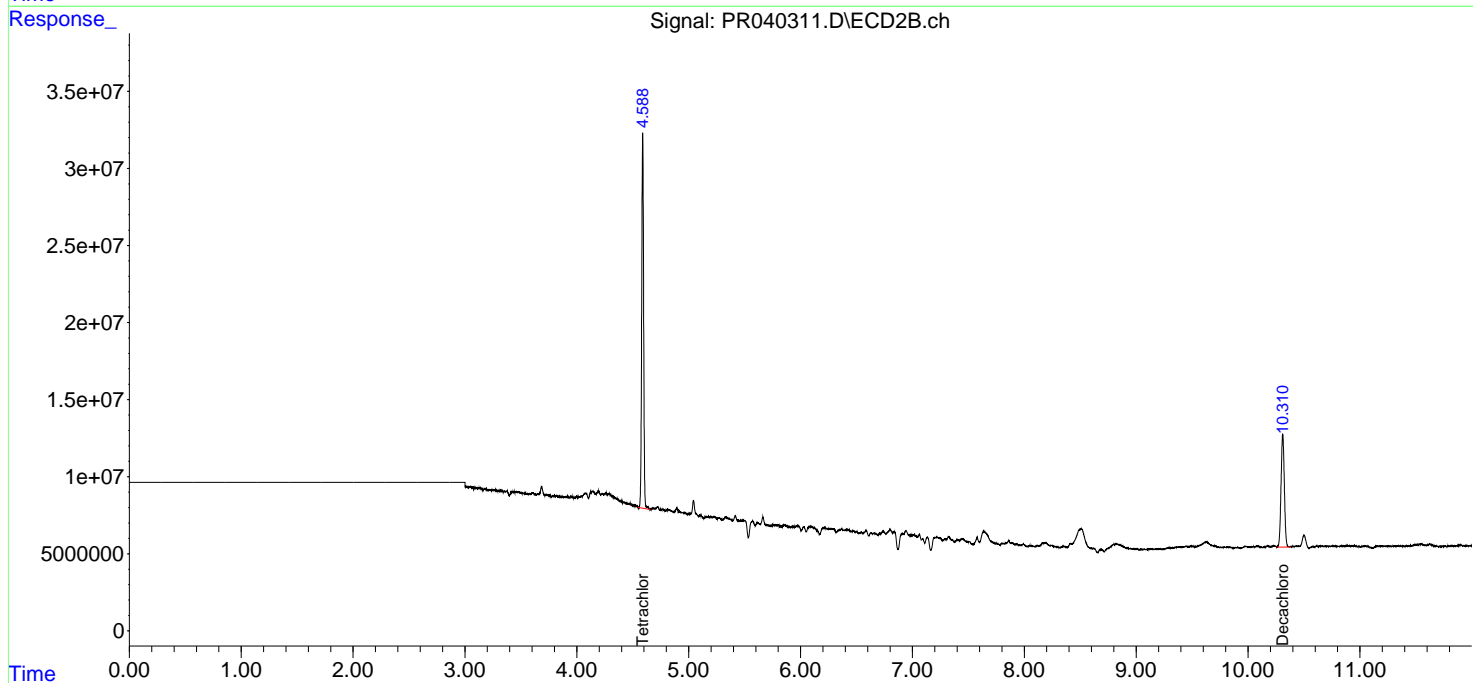
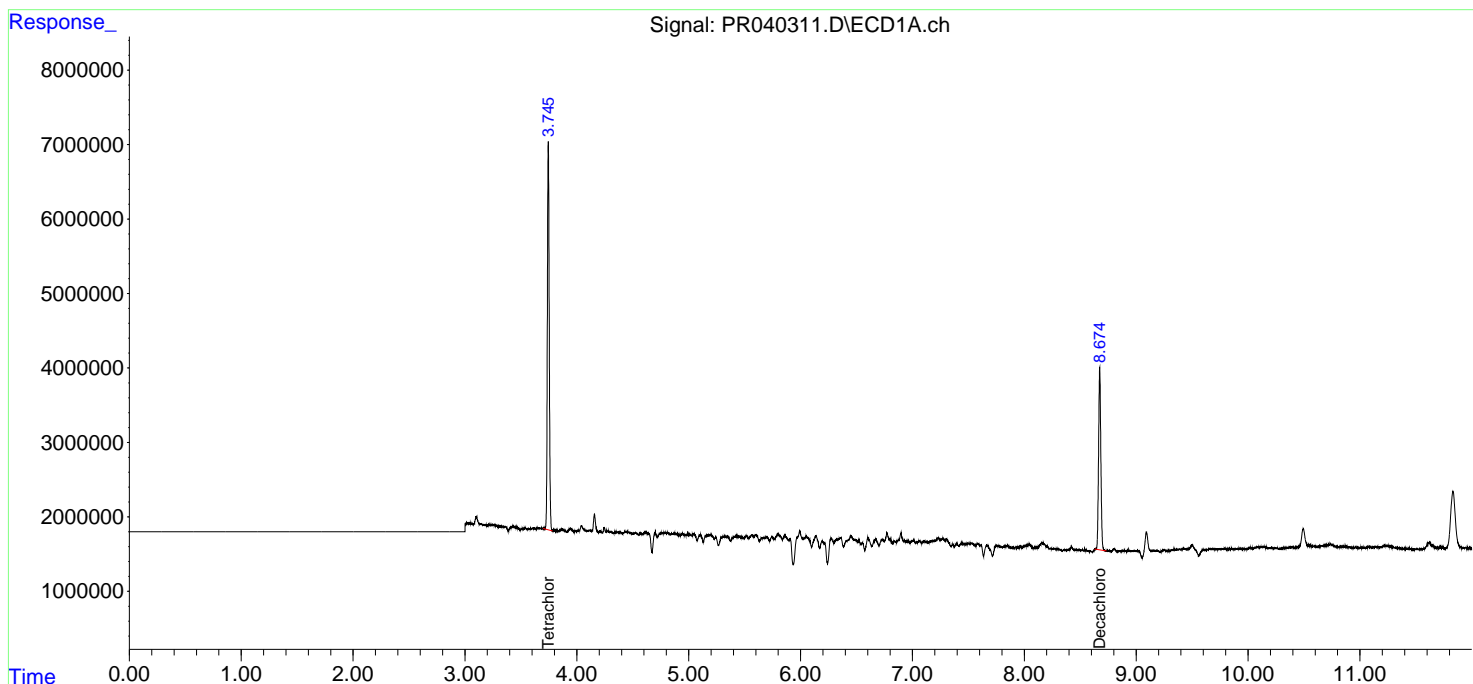
(f)=RT Delta > 1/2 Window (#)=Amounts differ by > 25% (m)=manual int.

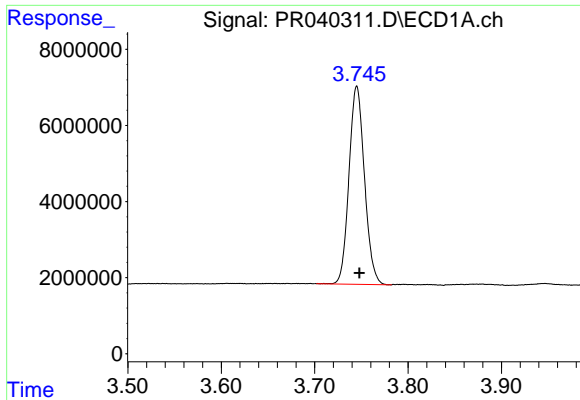
Data Path : Z:\pestpcbsrv\HPCHEM1\ECD_R\Data\PR081219\
 Data File : PR040311.D
 Signal(s) : Signal #1: ECD1A.ch Signal #2: ECD2B.ch
 Acq On : 12 Aug 2019 20:49
 Operator : SM\AJ
 Sample : K4230-12
 Misc :
 ALS Vial : 36 Sample Multiplier: 1

Instrument :
 ECD_R
 ClientSampleId :
 2S-J-(0-1)-COMP

Integration File signal 1: autoint1.e
 Integration File signal 2: autoint2.e
 Quant Time: Aug 13 04:33:23 2019
 Quant Method : Z:\pestpcbsrv\HPCHEM1\ECD_R\Method\PR081019.M
 Quant Title : GC EXTRACTABLES
 QLast Update : Sat Aug 10 07:38:17 2019
 Response via : Initial Calibration
 Integrator: ChemStation

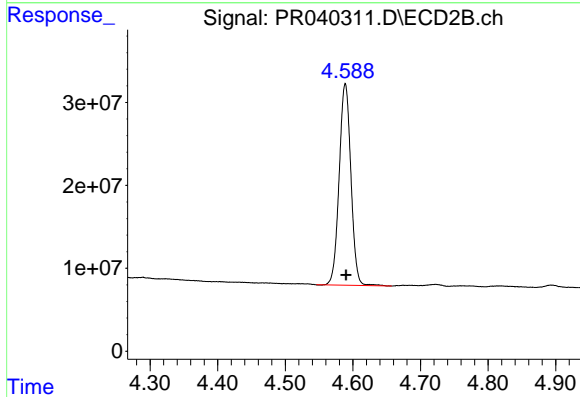
Volume Inj. : 2 µl
 Signal #1 Phase : ZB-MR1 Signal #2 Phase: ZB-MR2
 Signal #1 Info : 30Mx0.32mmx 0.50µ Signal #2 Info : 30M x 0.32mm x 0.25µm



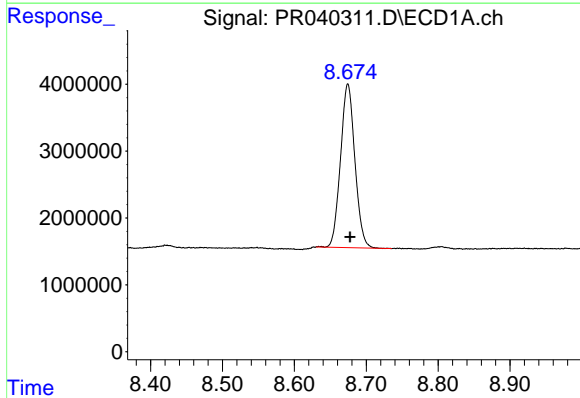


#1 Tetrachloro-m-xylene
 R.T.: 3.745 min
 Delta R.T.: -0.003 min
 Response: 59997237
 Conc: 25.04 ng/ml

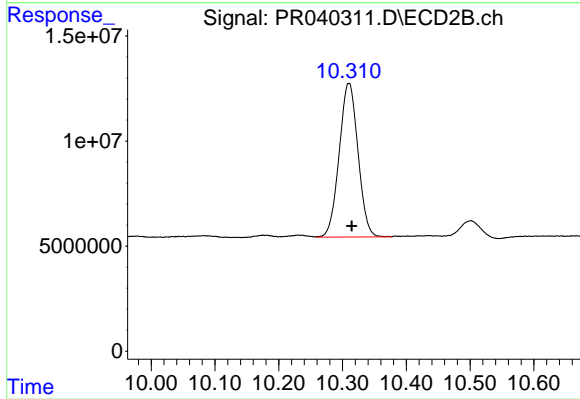
Instrument :
 ECD_R
 ClientSampleId :
 2S-J-(0-1)-COMP



#1 Tetrachloro-m-xylene
 R.T.: 4.589 min
 Delta R.T.: -0.001 min
 Response: 293180229
 Conc: 28.16 ng/ml



#2 Decachlorobiphenyl
 R.T.: 8.675 min
 Delta R.T.: -0.003 min
 Response: 33962236
 Conc: 13.96 ng/ml



#2 Decachlorobiphenyl
 R.T.: 10.310 min
 Delta R.T.: -0.004 min
 Response: 149725221
 Conc: 17.10 ng/ml