

Data Path : Z:\pestpcbsrv\HPCHEM1\ECD_R\Data\PR081219\
 Data File : PR040318.D
 Signal(s) : Signal #1: ECD1A.ch Signal #2: ECD2B.ch
 Acq On : 12 Aug 2019 22:31
 Operator : SM\AJ
 Sample : K4254-01
 Misc :
 ALS Vial : 41 Sample Multiplier: 1

Instrument :
 ECD_R
ClientSampleId :
 RECOVERED-CRSH-AGGREGATE-

Manual Integrations
APPROVED

Ankita
 8/14/2019 12:20:39 PM

Integration File signal 1: autoint1.e
 Integration File signal 2: autoint2.e
 Quant Time: Aug 13 04:39:35 2019
 Quant Method : Z:\pestpcbsrv\HPCHEM1\ECD_R\Method\PR081019.M
 Quant Title : GC EXTRACTABLES
 QLast Update : Sat Aug 10 07:38:17 2019
 Response via : Initial Calibration
 Integrator: ChemStation

Volume Inj. : 2 µl
 Signal #1 Phase : ZB-MR1 Signal #2 Phase: ZB-MR2
 Signal #1 Info : 30Mx0.32mmx 0.50µ Signal #2 Info : 30M x 0.32mm x 0.25µm

Compound	RT#1	RT#2	Resp#1	Resp#2	ng/ml	ng/ml

System Monitoring Compounds						
1) SA Tetrachlo...	3.745	4.589	44625678	219.1E6	18.622m	21.047
2) SA Decachlor...	8.674	10.308	33185975	140.8E6	13.637	16.076

Target Compounds

(f)=RT Delta > 1/2 Window (#)=Amounts differ by > 25% (m)=manual int.

Data Path : Z:\pestpcbsrv\HPCHEM1\ECD_R\Data\PR081219\
 Data File : PR040318.D
 Signal(s) : Signal #1: ECD1A.ch Signal #2: ECD2B.ch
 Acq On : 12 Aug 2019 22:31
 Operator : SM\AJ
 Sample : K4254-01
 Misc :
 ALS Vial : 41 Sample Multiplier: 1

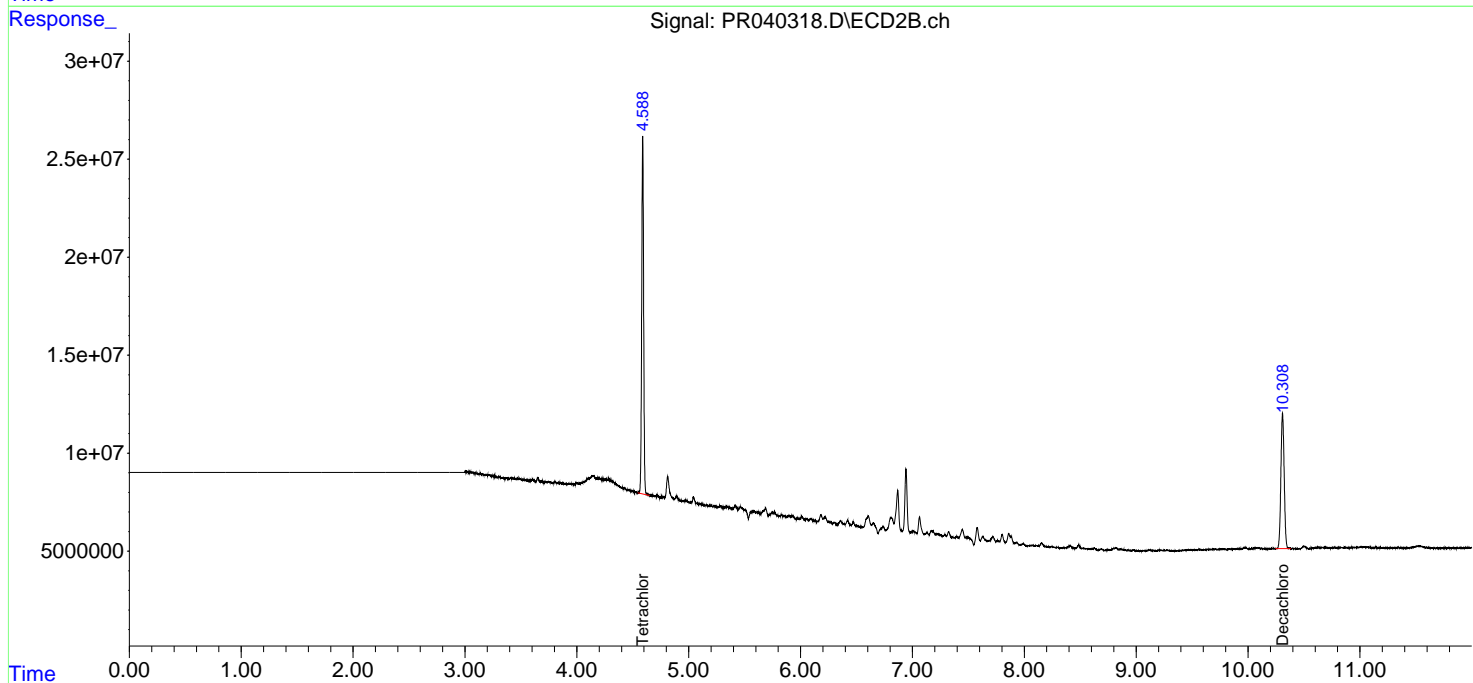
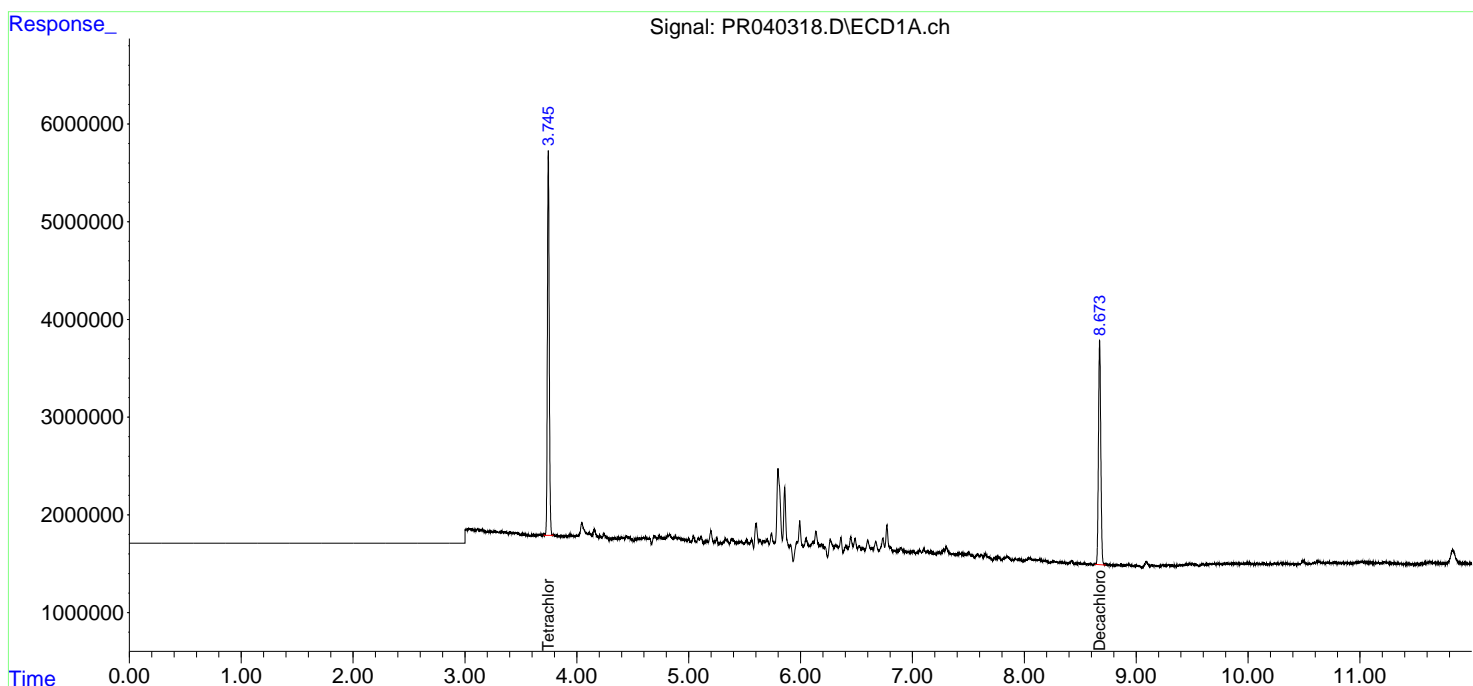
Instrument :
 ECD_R
Client Sampled :
 RECOVERED-CRSH-AGGREGATE-

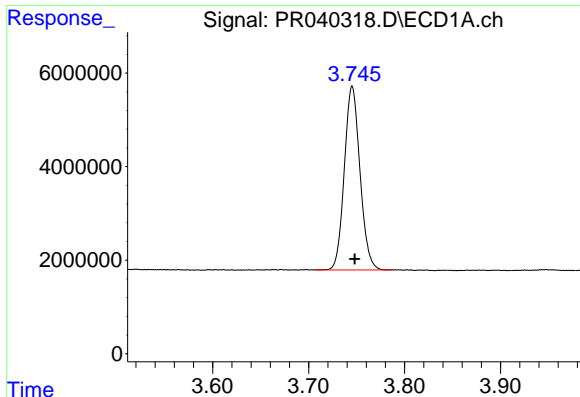
Manual Integrations
APPROVED

Ankita
 8/14/2019 12:20:39 PM

Integration File signal 1: autoint1.e
 Integration File signal 2: autoint2.e
 Quant Time: Aug 13 04:39:35 2019
 Quant Method : Z:\pestpcbsrv\HPCHEM1\ECD_R\Method\PR081019.M
 Quant Title : GC EXTRACTABLES
 QLast Update : Sat Aug 10 07:38:17 2019
 Response via : Initial Calibration
 Integrator: ChemStation

Volume Inj. : 2 µl
 Signal #1 Phase : ZB-MR1 Signal #2 Phase: ZB-MR2
 Signal #1 Info : 30Mx0.32mmx 0.50µ Signal #2 Info : 30M x 0.32mm x 0.25µm



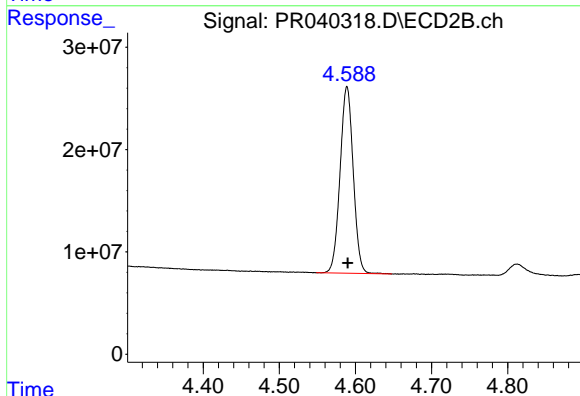


#1 Tetrachloro-m-xylene
 R.T.: 3.745 min
 Delta R.T.: -0.003 min
 Response: 44625678
 Conc: 18.62 ng/ml m

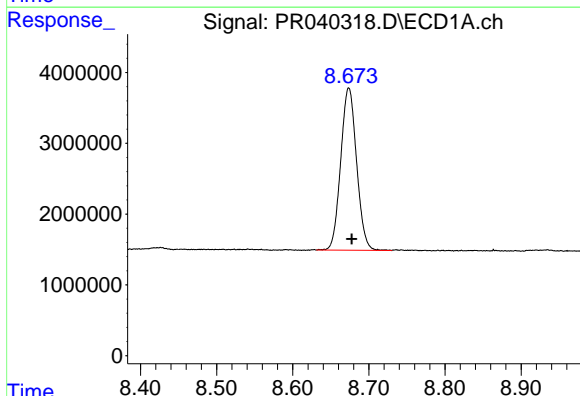
Instrument :
 ECD_R
 ClientSampled :
 RECOVERED-CRSH-AGGREGATE-

Manual Integrations
 APPROVED

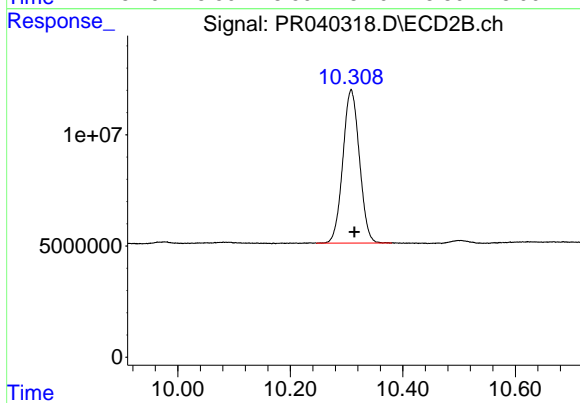
Ankita
 8/14/2019 12:20:39 PM



#1 Tetrachloro-m-xylene
 R.T.: 4.589 min
 Delta R.T.: -0.001 min
 Response: 219122787
 Conc: 21.05 ng/ml



#2 Decachlorobiphenyl
 R.T.: 8.674 min
 Delta R.T.: -0.004 min
 Response: 33185975
 Conc: 13.64 ng/ml



#2 Decachlorobiphenyl
 R.T.: 10.308 min
 Delta R.T.: -0.006 min
 Response: 140790300
 Conc: 16.08 ng/ml