

Data Path : Z:\pestpcbsrv\HPCHEM1\ECD_R\Data\PR081219\
 Data File : PR040320.D
 Signal(s) : Signal #1: ECD1A.ch Signal #2: ECD2B.ch
 Acq On : 12 Aug 2019 23:00
 Operator : SM\AJ
 Sample : K4254-03
 Misc :
 ALS Vial : 43 Sample Multiplier: 1

Instrument :
 ECD_R
 ClientSampleId :
 RECOVERED-CRSH-AGGREGATE-

Integration File signal 1: autoint1.e
 Integration File signal 2: autoint2.e
 Quant Time: Aug 13 04:44:08 2019
 Quant Method : Z:\pestpcbsrv\HPCHEM1\ECD_R\Method\PR081019.M
 Quant Title : GC EXTRACTABLES
 QLast Update : Sat Aug 10 07:38:17 2019
 Response via : Initial Calibration
 Integrator: ChemStation

Volume Inj. : 2 µl
 Signal #1 Phase : ZB-MR1 Signal #2 Phase: ZB-MR2
 Signal #1 Info : 30Mx0.32mmx 0.50µ Signal #2 Info : 30M x 0.32mm x 0.25µm

Compound	RT#1	RT#2	Resp#1	Resp#2	ng/ml	ng/ml

System Monitoring Compounds						
1) SA Tetrachlo...	3.745	4.589	87998229	420.9E6	36.720	40.425
2) SA Decachlor...	8.674	10.310	50514129	215.1E6	20.758	24.562

Target Compounds

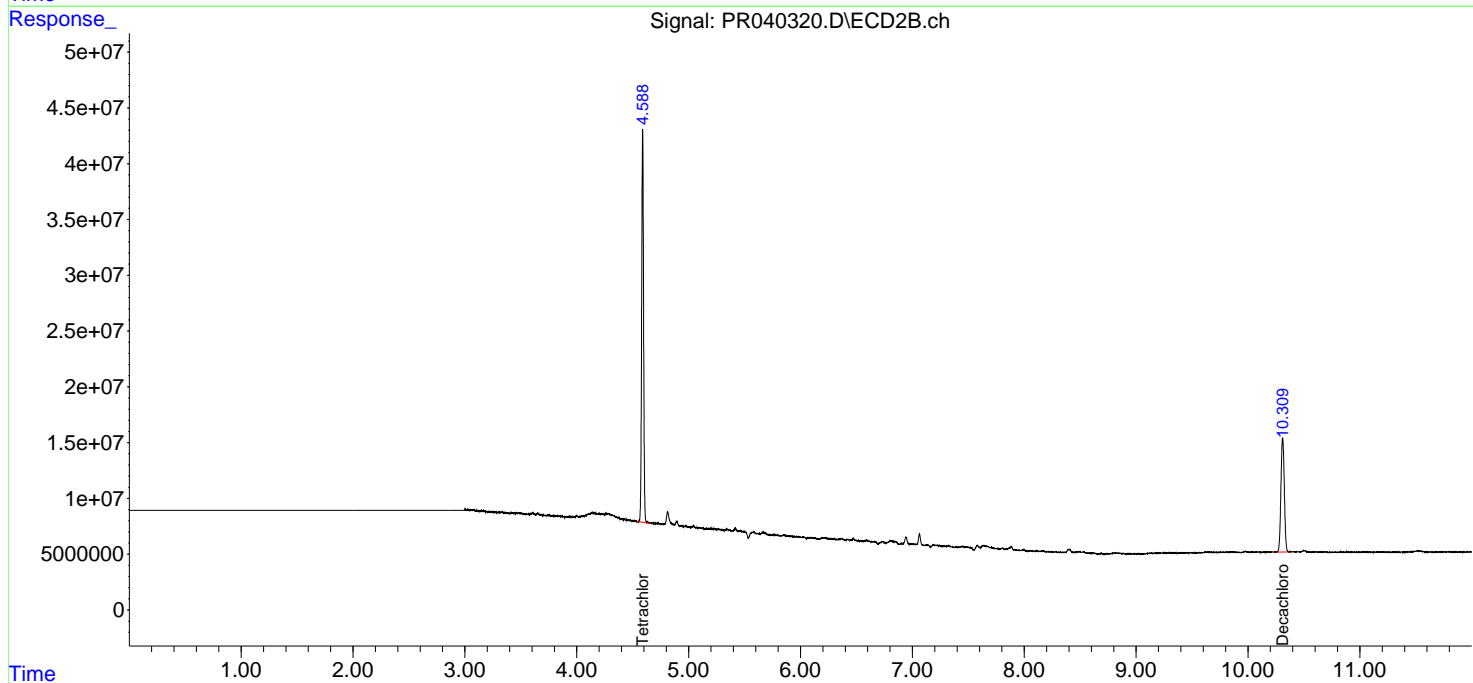
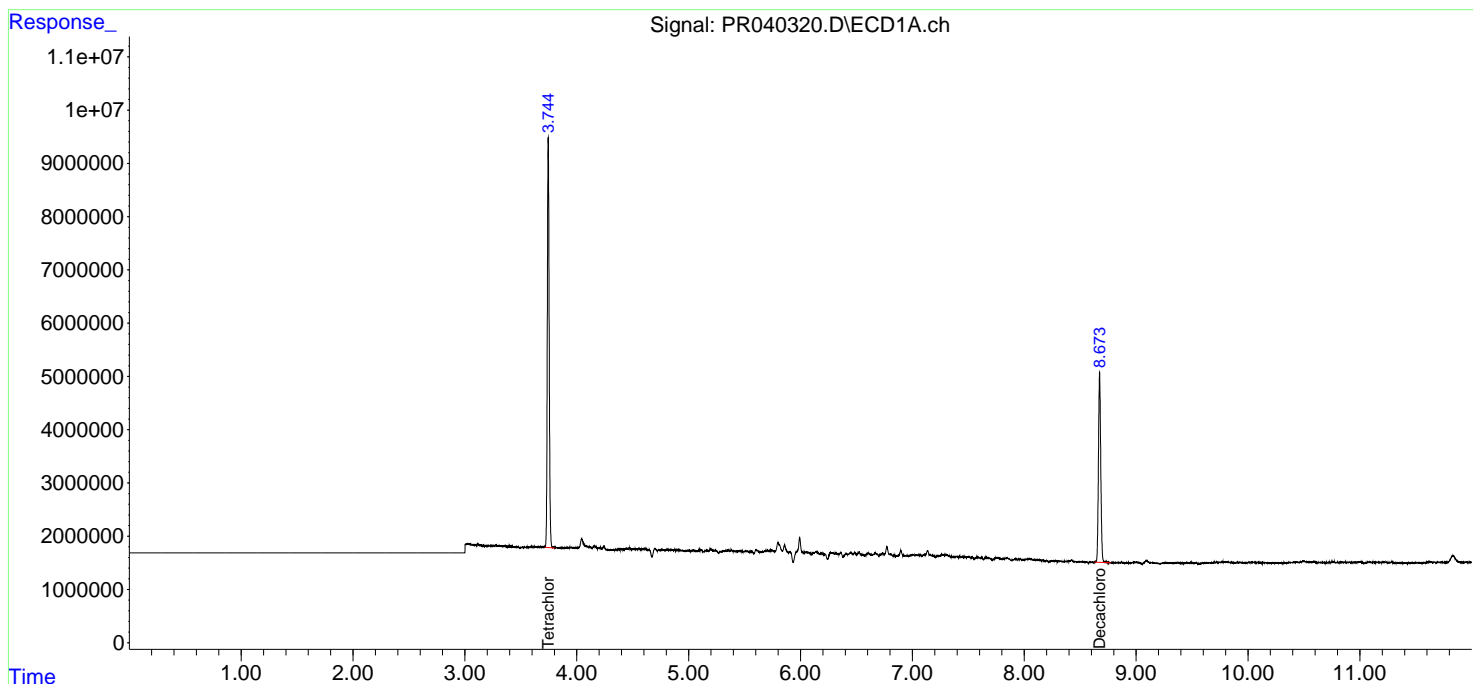
(f)=RT Delta > 1/2 Window (#)=Amounts differ by > 25% (m)=manual int.

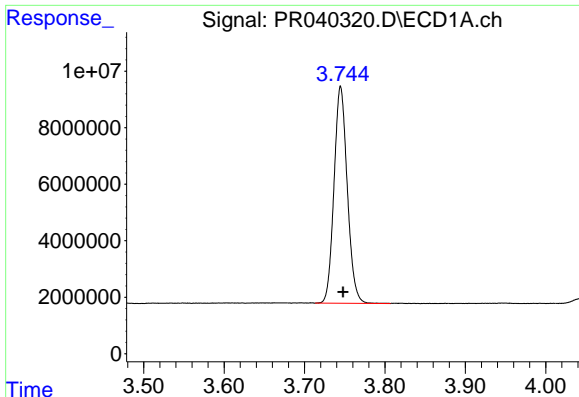
Data Path : Z:\pestpcbsrv\HPCHEM1\ECD_R\Data\PR081219\
 Data File : PR040320.D
 Signal(s) : Signal #1: ECD1A.ch Signal #2: ECD2B.ch
 Acq On : 12 Aug 2019 23:00
 Operator : SM\AJ
 Sample : K4254-03
 Misc :
 ALS Vial : 43 Sample Multiplier: 1

Instrument :
 ECD_R
ClientSampleId :
 RECOVERED-CRSH-AGGREGATE-

Integration File signal 1: autoint1.e
 Integration File signal 2: autoint2.e
 Quant Time: Aug 13 04:44:08 2019
 Quant Method : Z:\pestpcbsrv\HPCHEM1\ECD_R\Method\PR081019.M
 Quant Title : GC EXTRACTABLES
 QLast Update : Sat Aug 10 07:38:17 2019
 Response via : Initial Calibration
 Integrator: ChemStation

Volume Inj. : 2 µl
 Signal #1 Phase : ZB-MR1 Signal #2 Phase: ZB-MR2
 Signal #1 Info : 30Mx0.32mmx 0.50µ Signal #2 Info : 30M x 0.32mm x 0.25µm

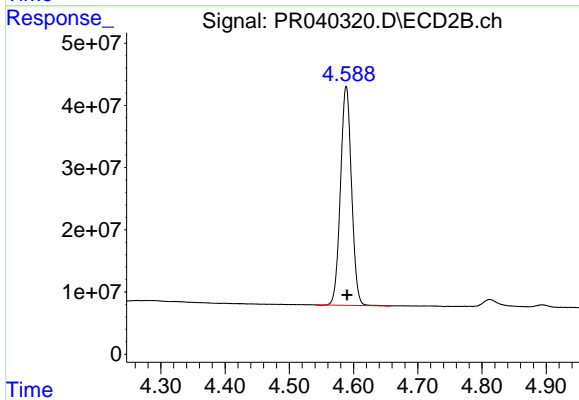




#1 Tetrachloro-m-xylene

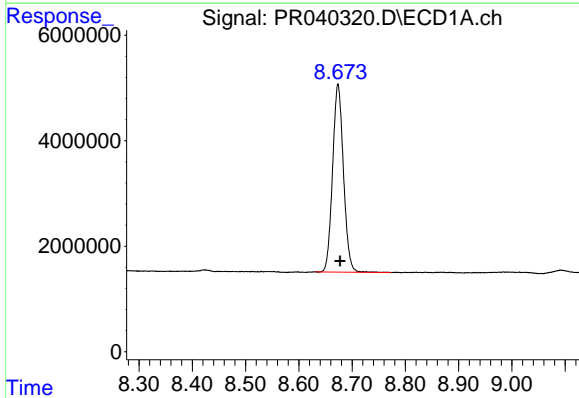
R.T.: 3.745 min
Delta R.T.: -0.003 min
Response: 87998229
Conc: 36.72 ng/ml

Instrument :
ECD_R
ClientSampleId :
RECOVERED-CRSH-AGGREGATE-



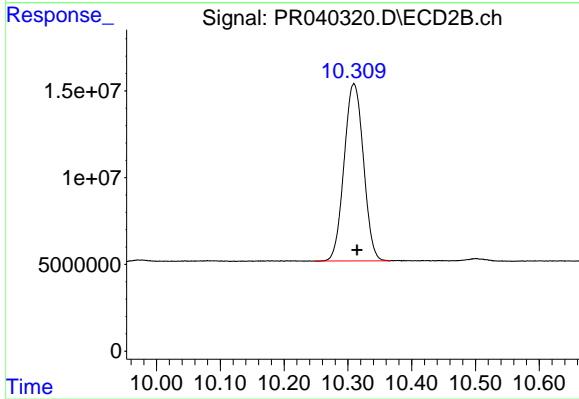
#1 Tetrachloro-m-xylene

R.T.: 4.589 min
Delta R.T.: -0.001 min
Response: 420868708
Conc: 40.43 ng/ml



#2 Decachlorobiphenyl

R.T.: 8.674 min
Delta R.T.: -0.004 min
Response: 50514129
Conc: 20.76 ng/ml



#2 Decachlorobiphenyl

R.T.: 10.310 min
Delta R.T.: -0.005 min
Response: 215102190
Conc: 24.56 ng/ml