

Data Path : Z:\pestpcbsrv\HPCHEM1\ECD_R\Data\PR081219\
 Data File : PR040329.D
 Signal(s) : Signal #1: ECD1A.ch Signal #2: ECD2B.ch
 Acq On : 13 Aug 2019 01:11
 Operator : SM\AJ
 Sample : K4284-01
 Misc :
 ALS Vial : 52 Sample Multiplier: 1

Instrument :
 ECD_R
 ClientSampleId :
 CONCRETE-1

Integration File signal 1: autoint1.e
 Integration File signal 2: autoint2.e
 Quant Time: Aug 13 04:48:23 2019
 Quant Method : Z:\pestpcbsrv\HPCHEM1\ECD_R\Method\PR081019.M
 Quant Title : GC EXTRACTABLES
 QLast Update : Sat Aug 10 07:38:17 2019
 Response via : Initial Calibration
 Integrator: ChemStation

Volume Inj. : 2 µl
 Signal #1 Phase : ZB-MR1 Signal #2 Phase: ZB-MR2
 Signal #1 Info : 30Mx0.32mmx 0.50µ Signal #2 Info : 30M x 0.32mm x 0.25µm

Compound	RT#1	RT#2	Resp#1	Resp#2	ng/ml	ng/ml

System Monitoring Compounds						
1) SA Tetrachlo...	3.746	4.589	42990958	242.5E6	17.940	23.293 #
2) SA Decachlor...	8.673	10.307	43854305	183.7E6	18.021	20.976

Target Compounds

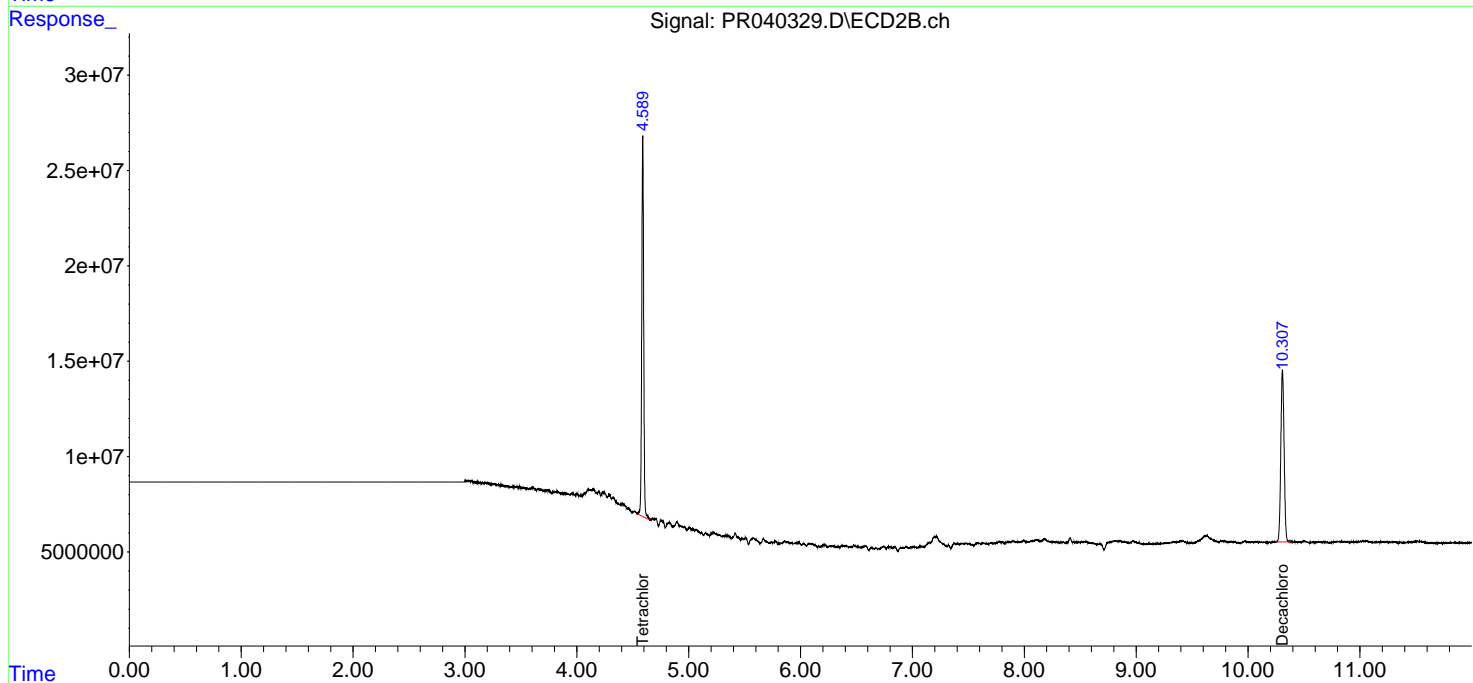
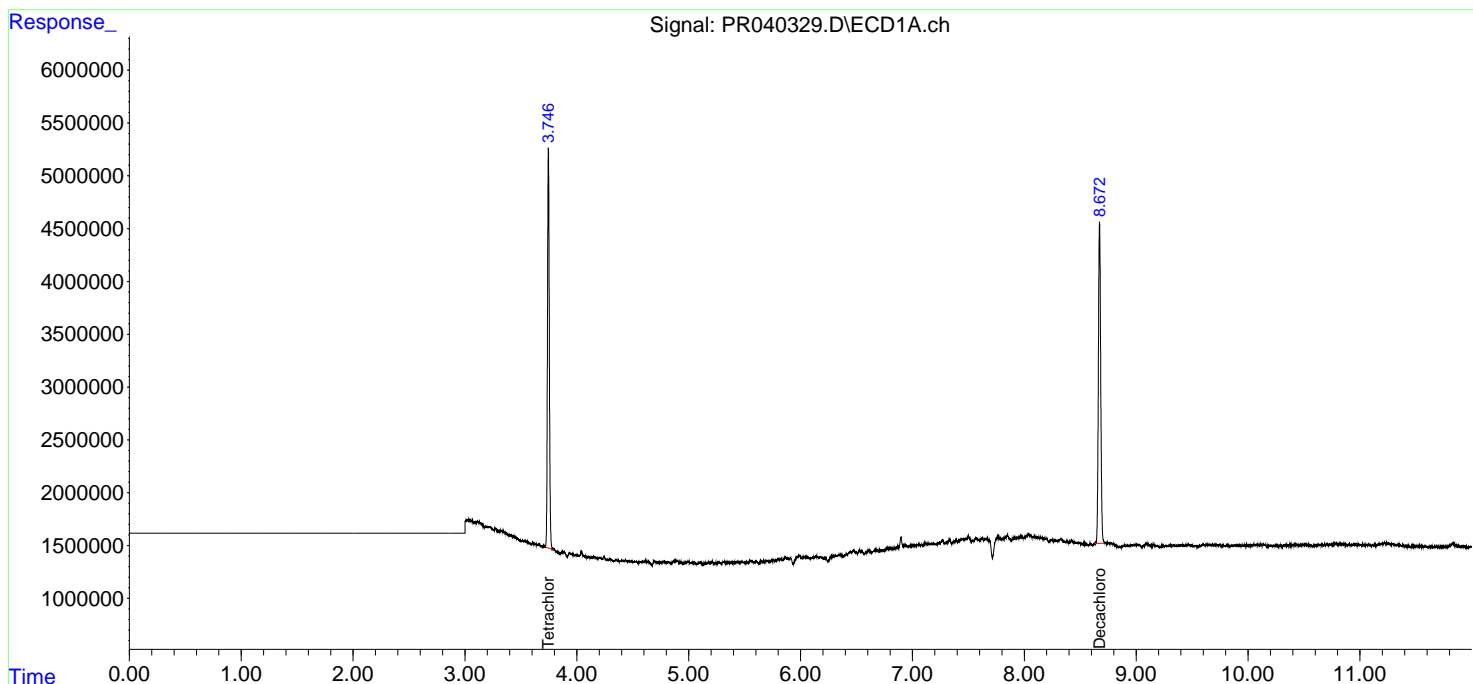
(f)=RT Delta > 1/2 Window (#)=Amounts differ by > 25% (m)=manual int.

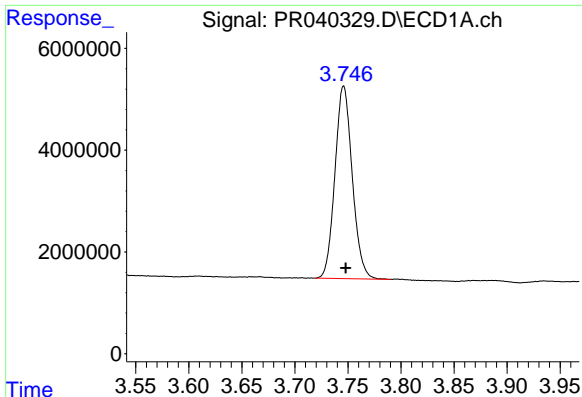
Data Path : Z:\pestpcbsrv\HPCHEM1\ECD_R\Data\PR081219\
 Data File : PR040329.D
 Signal(s) : Signal #1: ECD1A.ch Signal #2: ECD2B.ch
 Acq On : 13 Aug 2019 01:11
 Operator : SM\AJ
 Sample : K4284-01
 Misc :
 ALS Vial : 52 Sample Multiplier: 1

Instrument :
 ECD_R
ClientSampled :
 CONCRETE-1

Integration File signal 1: autoint1.e
 Integration File signal 2: autoint2.e
 Quant Time: Aug 13 04:48:23 2019
 Quant Method : Z:\pestpcbsrv\HPCHEM1\ECD_R\Method\PR081019.M
 Quant Title : GC EXTRACTABLES
 QLast Update : Sat Aug 10 07:38:17 2019
 Response via : Initial Calibration
 Integrator: ChemStation

Volume Inj. : 2 µl
 Signal #1 Phase : ZB-MR1 Signal #2 Phase: ZB-MR2
 Signal #1 Info : 30Mx0.32mmx 0.50µ Signal #2 Info : 30M x 0.32mm x 0.25µm

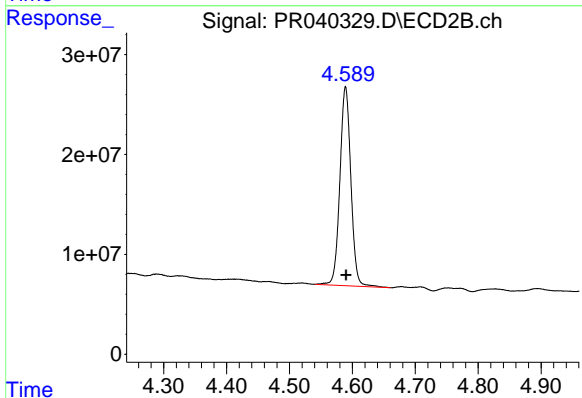




#1 Tetrachloro-m-xylene

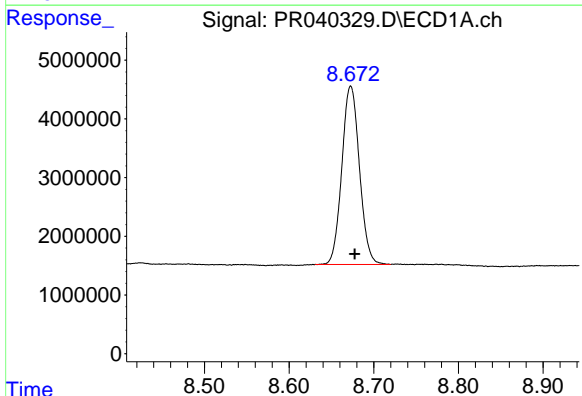
R.T.: 3.746 min
Delta R.T.: -0.002 min
Response: 42990958
Conc: 17.94 ng/ml

Instrument :
ECD_R
ClientSampleId :
CONCRETE-1



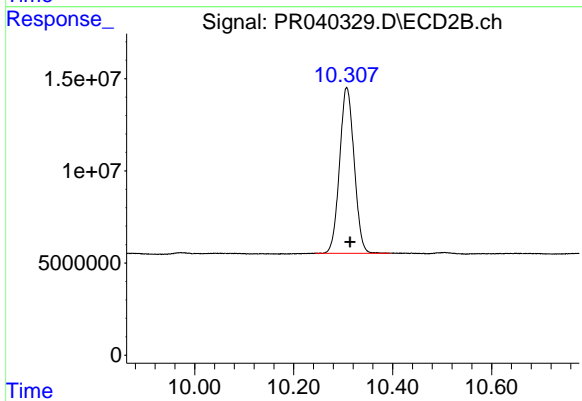
#1 Tetrachloro-m-xylene

R.T.: 4.589 min
Delta R.T.: 0.000 min
Response: 242503355
Conc: 23.29 ng/ml



#2 Decachlorobiphenyl

R.T.: 8.673 min
Delta R.T.: -0.005 min
Response: 43854305
Conc: 18.02 ng/ml



#2 Decachlorobiphenyl

R.T.: 10.307 min
Delta R.T.: -0.007 min
Response: 183696920
Conc: 20.98 ng/ml