

Data Path : Z:\pestpcbsrv\HPCHEM1\ECD_R\Data\PR081224\
 Data File : PR068144.D
 Signal(s) : Signal #1: ECD1A.ch Signal #2: ECD2B.ch
 Acq On : 12 Aug 2024 11:14
 Operator : AJ\MA
 Sample : P3550-04
 Misc :
 ALS Vial : 10 Sample Multiplier: 1

Instrument :
 ECD_R
 ClientSampleId :
 R061-B2

Integration File signal 1: autoint1.e
 Integration File signal 2: autoint2.e
 Quant Time: Aug 12 12:55:05 2024
 Quant Method : Z:\pestpcbsrv\HPCHEM1\ECD_R\Method\PR080824.M
 Quant Title : GC EXTRACTABLES
 QLast Update : Thu Aug 08 22:24:34 2024
 Response via : Initial Calibration
 Integrator: ChemStation

Volume Inj. : 2 µl
 Signal #1 Phase : ZB-MR1 Signal #2 Phase: ZB-MR2
 Signal #1 Info : 30Mx0.32mmx 0.50µ Signal #2 Info : 30M x 0.32mm x 0.25µm

Compound	RT#1	RT#2	Resp#1	Resp#2	ng/ml	ng/ml

System Monitoring Compounds						
1) SA Tetrachlo...	3.676	3.009	39759206	87224422	16.007	17.529
2) SA Decachlor...	9.582	8.329	59270977	62135087	13.201	11.847

Target Compounds

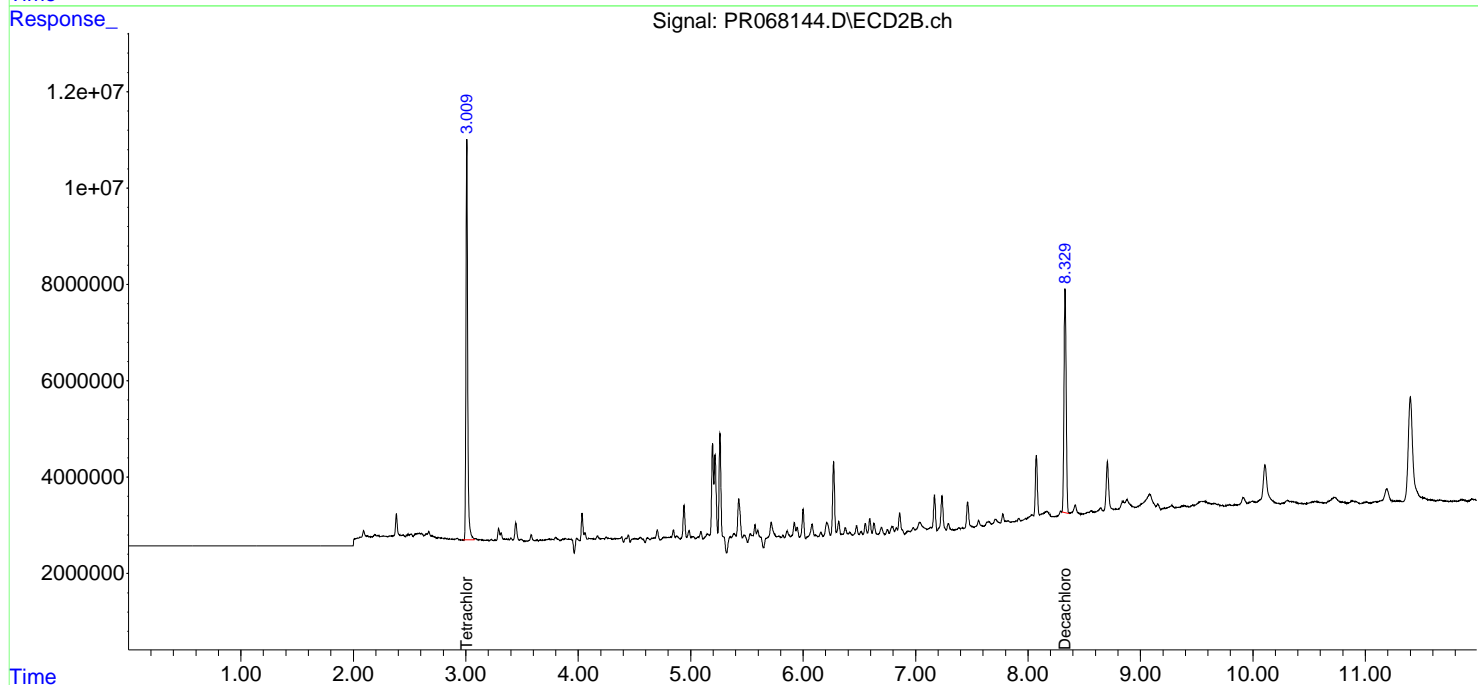
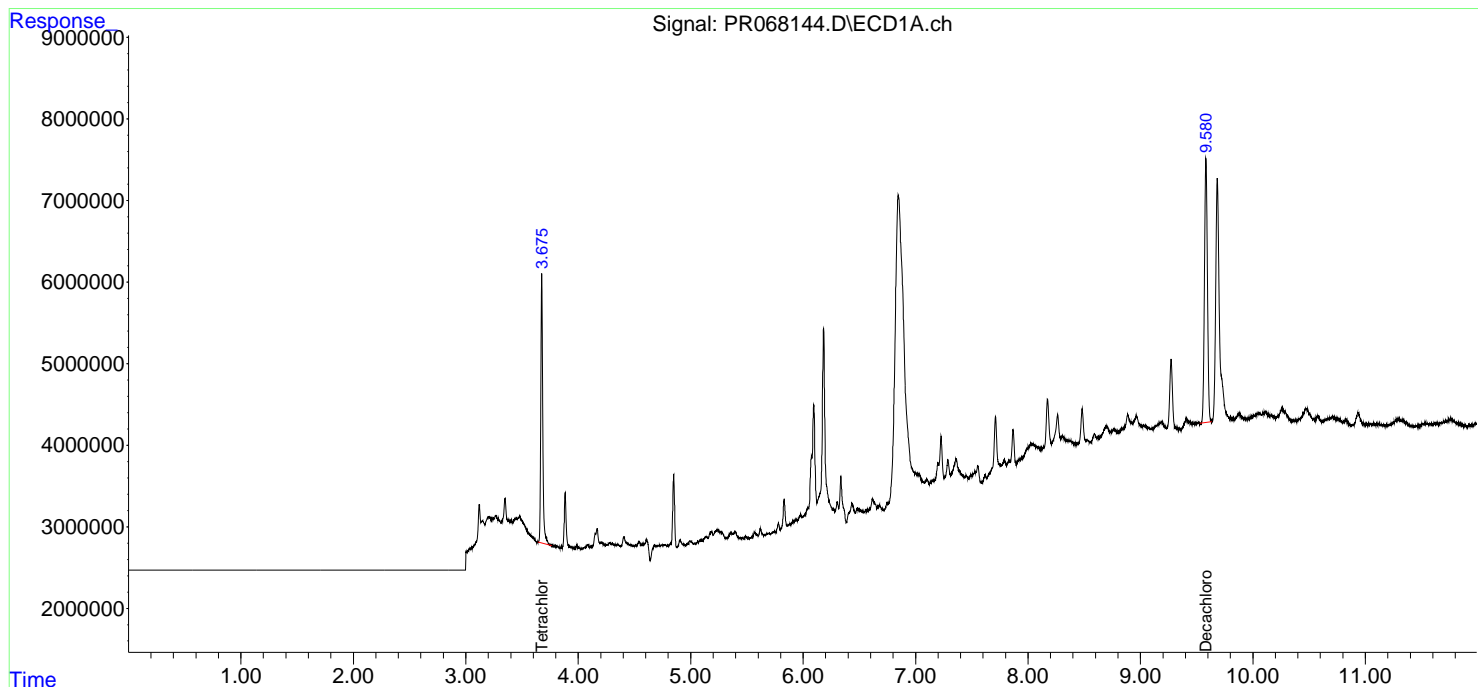
(f)=RT Delta > 1/2 Window (#)=Amounts differ by > 25% (m)=manual int.

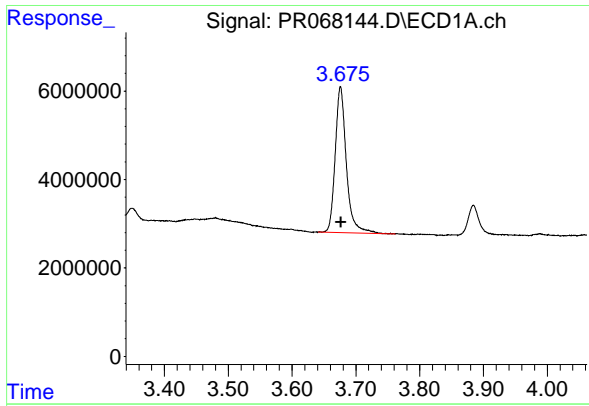
Data Path : Z:\pestpcbsrv\HPCHEM1\ECD_R\Data\PR081224\
Data File : PR068144.D
Signal(s) : Signal #1: ECD1A.ch Signal #2: ECD2B.ch
Acq On : 12 Aug 2024 11:14
Operator : AJ\MA
Sample : P3550-04
Misc :
ALS Vial : 10 Sample Multiplier: 1

Instrument :
ECD_R
ClientSampleId :
R061-B2

Integration File signal 1: autoint1.e
Integration File signal 2: autoint2.e
Quant Time: Aug 12 12:55:05 2024
Quant Method : Z:\pestpcbsrv\HPCHEM1\ECD_R\Method\PR080824.M
Quant Title : GC EXTRACTABLES
QLast Update : Thu Aug 08 22:24:34 2024
Response via : Initial Calibration
Integrator: ChemStation

Volume Inj. : 2 µl
Signal #1 Phase : ZB-MR1 Signal #2 Phase: ZB-MR2
Signal #1 Info : 30Mx0.32mmx 0.50µ Signal #2 Info : 30M x 0.32mm x 0.25µm

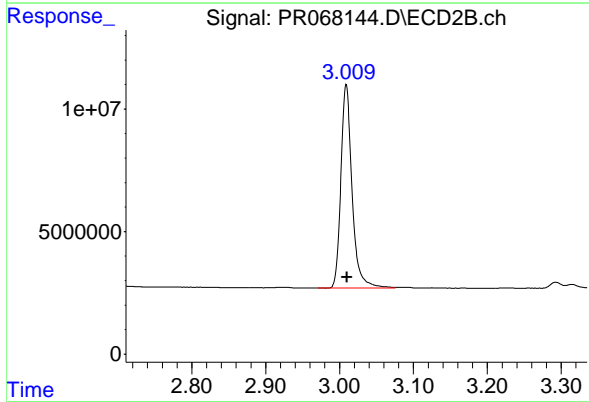




#1 Tetrachloro-m-xylene

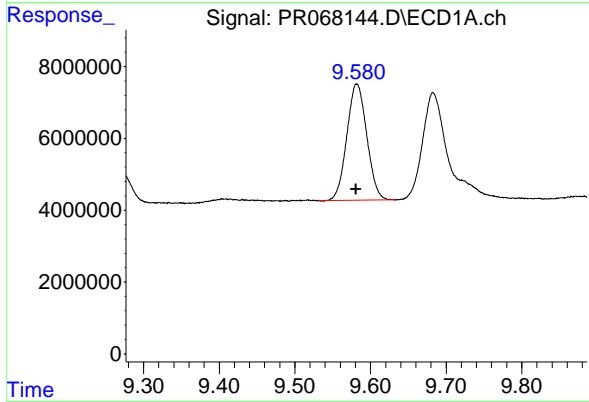
R.T.: 3.676 min
 Delta R.T.: -0.001 min
 Response: 39759206
 Conc: 16.01 ng/ml

Instrument : ECD_R
 ClientSampleId : R061-B2



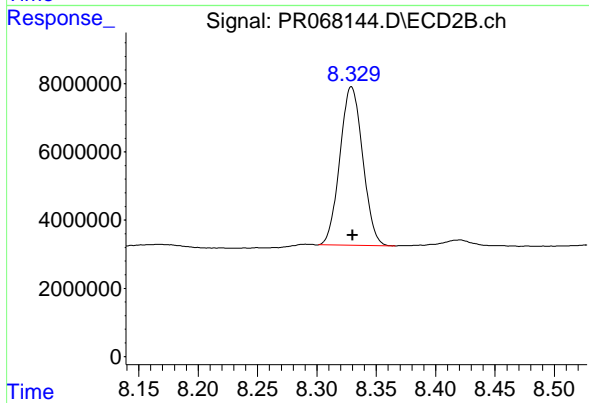
#1 Tetrachloro-m-xylene

R.T.: 3.009 min
 Delta R.T.: 0.000 min
 Response: 87224422
 Conc: 17.53 ng/ml



#2 Decachlorobiphenyl

R.T.: 9.582 min
 Delta R.T.: 0.001 min
 Response: 59270977
 Conc: 13.20 ng/ml



#2 Decachlorobiphenyl

R.T.: 8.329 min
 Delta R.T.: -0.001 min
 Response: 62135087
 Conc: 11.85 ng/ml