

Data Path : Z:\pestpcbsrv\HPCHEM1\ECD_R\Data\PR081224\
 Data File : PR068156.D
 Signal(s) : Signal #1: ECD1A.ch Signal #2: ECD2B.ch
 Acq On : 12 Aug 2024 14:48
 Operator : AJ\MA
 Sample : P3520-09
 Misc :
 ALS Vial : 20 Sample Multiplier: 1

Instrument :
 ECD_R
 ClientSampleId :
 OU4-CF-12-080624

Integration File signal 1: autoint1.e
 Integration File signal 2: autoint2.e
 Quant Time: Aug 13 03:59:44 2024
 Quant Method : Z:\pestpcbsrv\HPCHEM1\ECD_R\Method\PR080824.M
 Quant Title : GC EXTRACTABLES
 QLast Update : Thu Aug 08 22:24:34 2024
 Response via : Initial Calibration
 Integrator: ChemStation

Volume Inj. : 2 µl
 Signal #1 Phase : ZB-MR1 Signal #2 Phase: ZB-MR2
 Signal #1 Info : 30Mx0.32mmx 0.50µ Signal #2 Info : 30M x 0.32mm x 0.25µm

Compound	RT#1	RT#2	Resp#1	Resp#2	ng/ml	ng/ml

System Monitoring Compounds						
1) SA Tetrachlo...	3.676	3.009	48112647	109.5E6	19.370	22.013
2) SA Decachlor...	9.582	8.327	96571739	103.1E6	21.508	19.661

Target Compounds

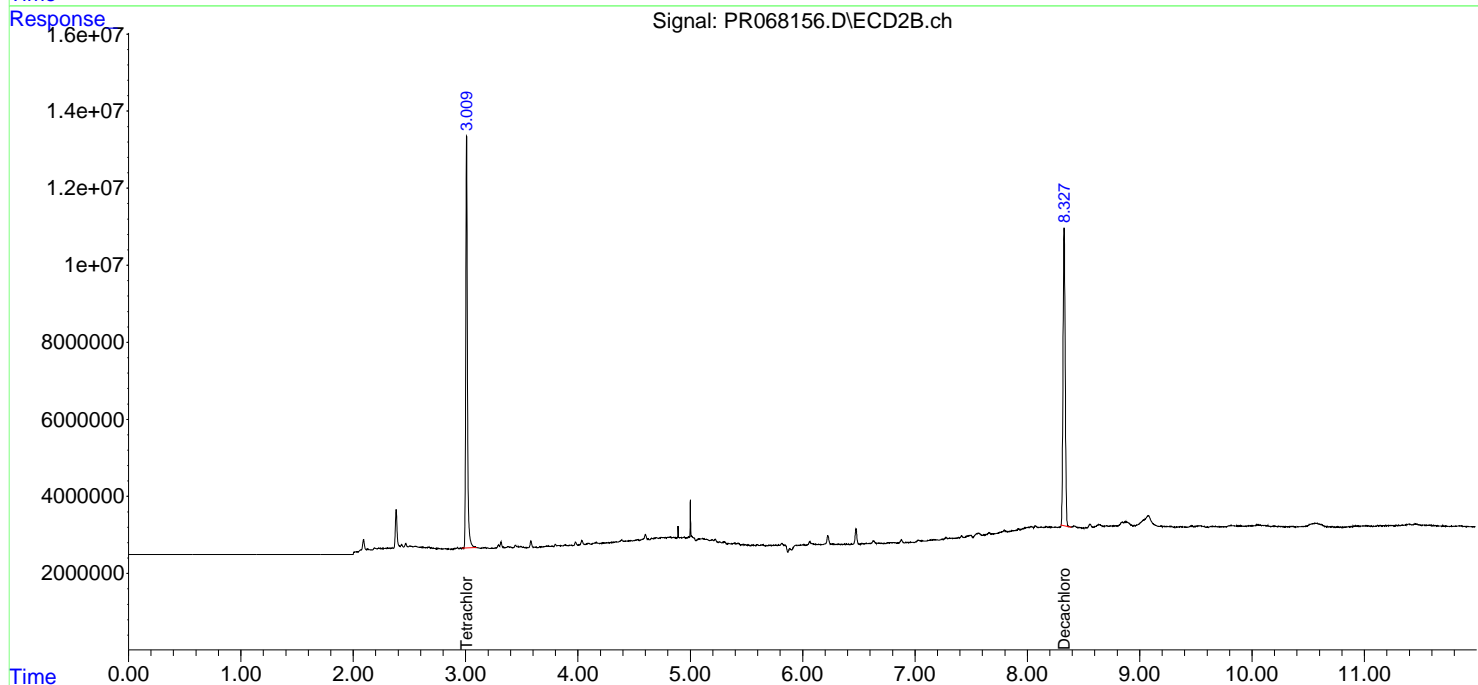
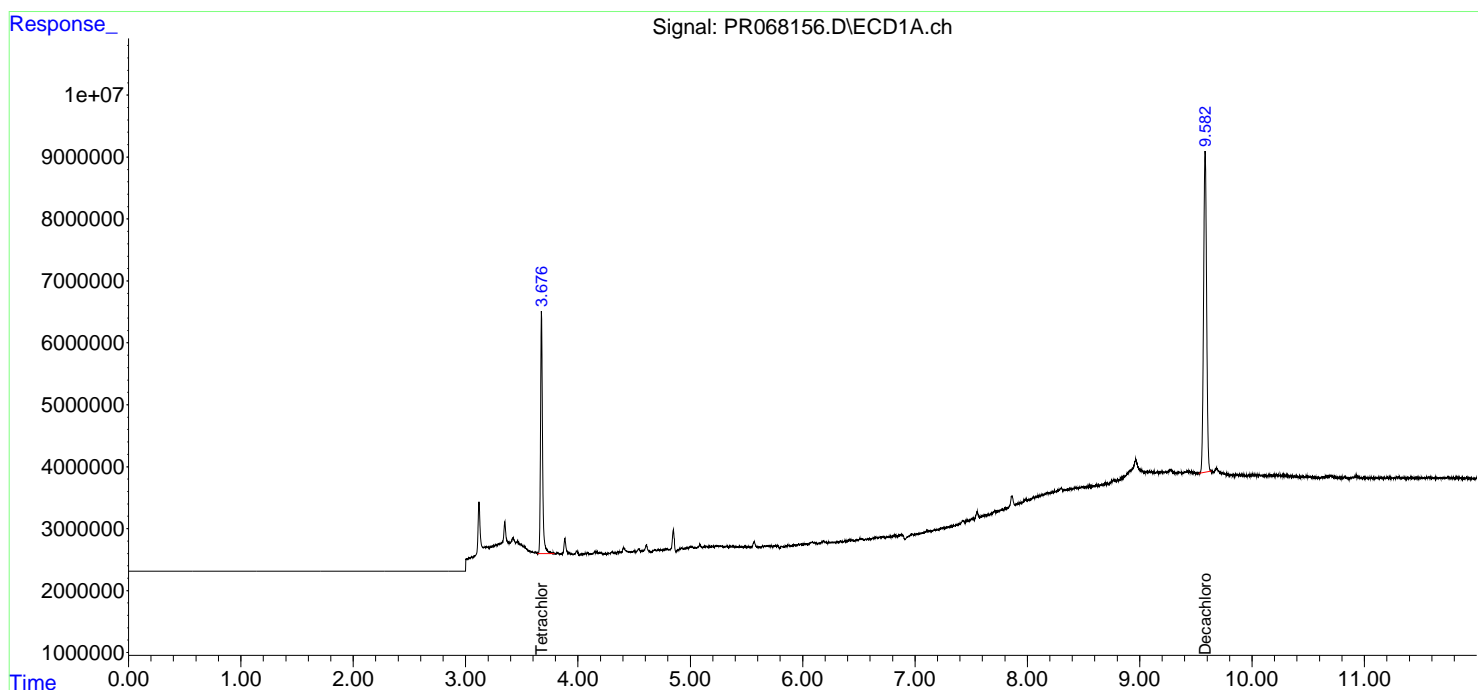
(f)=RT Delta > 1/2 Window (#)=Amounts differ by > 25% (m)=manual int.

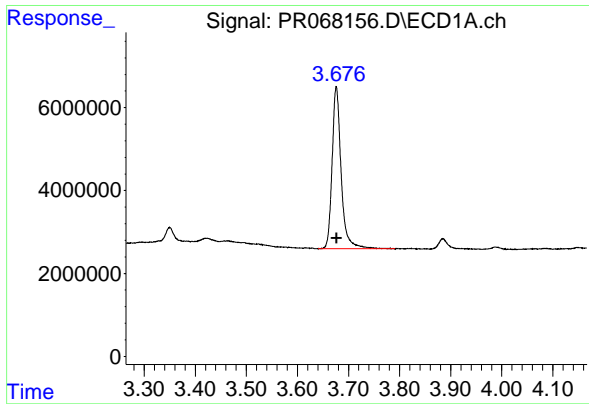
Data Path : Z:\pestpcbsrv\HPCHEM1\ECD_R\Data\PR081224\
 Data File : PR068156.D
 Signal(s) : Signal #1: ECD1A.ch Signal #2: ECD2B.ch
 Acq On : 12 Aug 2024 14:48
 Operator : AJ\MA
 Sample : P3520-09
 Misc :
 ALS Vial : 20 Sample Multiplier: 1

Instrument :
 ECD_R
 ClientSampleId :
 OU4-CF-12-080624

Integration File signal 1: autoint1.e
 Integration File signal 2: autoint2.e
 Quant Time: Aug 13 03:59:44 2024
 Quant Method : Z:\pestpcbsrv\HPCHEM1\ECD_R\Method\PR080824.M
 Quant Title : GC EXTRACTABLES
 QLast Update : Thu Aug 08 22:24:34 2024
 Response via : Initial Calibration
 Integrator: ChemStation

Volume Inj. : 2 µl
 Signal #1 Phase : ZB-MR1 Signal #2 Phase: ZB-MR2
 Signal #1 Info : 30Mx0.32mmx 0.50µm Signal #2 Info : 30M x 0.32mm x 0.25µm

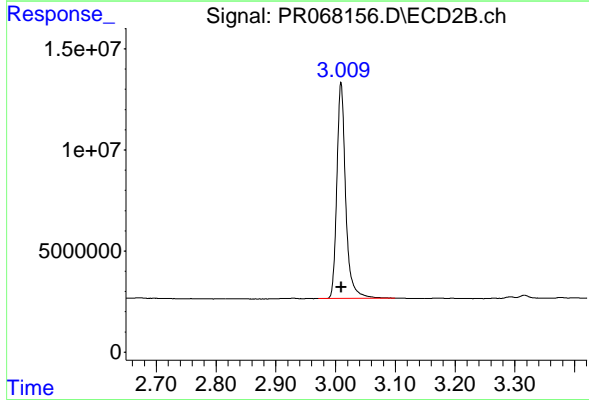




#1 Tetrachloro-m-xylene

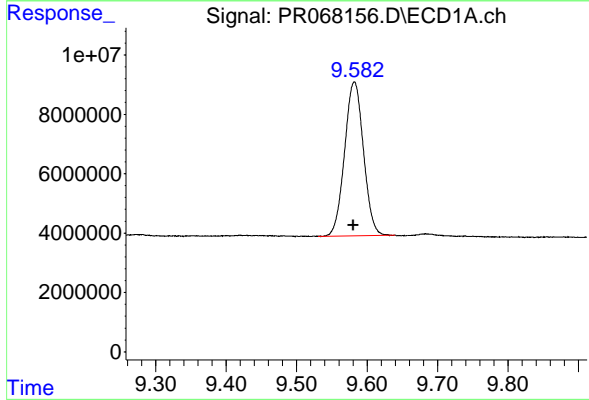
R.T.: 3.676 min
 Delta R.T.: 0.000 min
 Response: 48112647
 Conc: 19.37 ng/ml

Instrument : ECD_R
 ClientSampleId : OU4-CF-12-080624



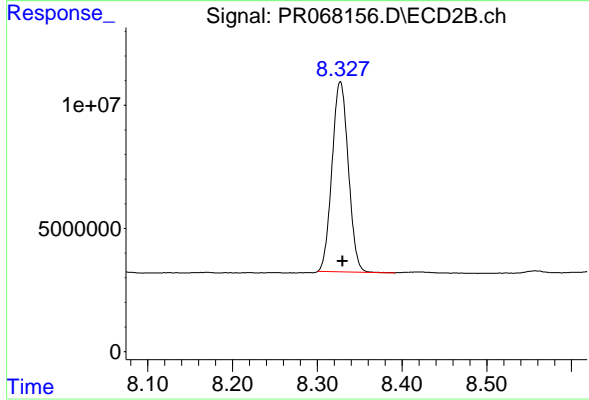
#1 Tetrachloro-m-xylene

R.T.: 3.009 min
 Delta R.T.: 0.000 min
 Response: 109533024
 Conc: 22.01 ng/ml



#2 Decachlorobiphenyl

R.T.: 9.582 min
 Delta R.T.: 0.001 min
 Response: 96571739
 Conc: 21.51 ng/ml



#2 Decachlorobiphenyl

R.T.: 8.327 min
 Delta R.T.: -0.003 min
 Response: 103120039
 Conc: 19.66 ng/ml