

Data Path : Z:\pestpcbsrv\HPCHEM1\ECD_R\Data\PR081224\
 Data File : PR068166.D
 Signal(s) : Signal #1: ECD1A.ch Signal #2: ECD2B.ch
 Acq On : 12 Aug 2024 17:30
 Operator : AJ\MA
 Sample : PB162655BS
 Misc :
 ALS Vial : 28 Sample Multiplier: 1

Instrument :
 ECD_R
 ClientSampleId :
 PB162655BS

Integration File signal 1: autoint1.e
 Integration File signal 2: autoint2.e
 Quant Time: Aug 13 04:08:43 2024
 Quant Method : Z:\pestpcbsrv\HPCHEM1\ECD_R\Method\PR080824.M
 Quant Title : GC EXTRACTABLES
 QLast Update : Thu Aug 08 22:24:34 2024
 Response via : Initial Calibration
 Integrator: ChemStation

Volume Inj. : 2 µl
 Signal #1 Phase : ZB-MR1 Signal #2 Phase: ZB-MR2
 Signal #1 Info : 30Mx0.32mmx 0.50µ Signal #2 Info : 30M x 0.32mm x 0.25µm

Compound	RT#1	RT#2	Resp#1	Resp#2	ng/ml	ng/ml

System Monitoring Compounds						
1) SA Tetrachlo...	3.677	3.009	51068619	113.1E6	20.560	22.720
2) SA Decachlor...	9.582	8.328	110.7E6	122.3E6	24.661	23.321
Target Compounds						
3) L1 AR-1016-1	4.900	4.140	25012904	82752611	424.446	472.081
4) L1 AR-1016-2	4.922	4.159	46788872	117.0E6	417.814	476.433
5) L1 AR-1016-3	4.987	4.340	32331515	63883121	429.234	471.361
6) L1 AR-1016-4	5.089	4.391	26388528	53130744	440.640	468.237
7) L1 AR-1016-5	5.404	4.611	20247534	66927352	419.885	477.076
31) L7 AR-1260-1	6.615	5.715	37453872	136.2E6	416.441	461.194
32) L7 AR-1260-2	6.899	5.921	64279089	164.1E6	444.930	476.025
33) L7 AR-1260-3	7.288	6.081	61350597	154.9E6	431.352	479.027
34) L7 AR-1260-4	7.530	6.593	55950891	114.5E6	440.111	462.368
35) L7 AR-1260-5	7.868	6.859	180.5E6	272.1E6	472.324	483.072

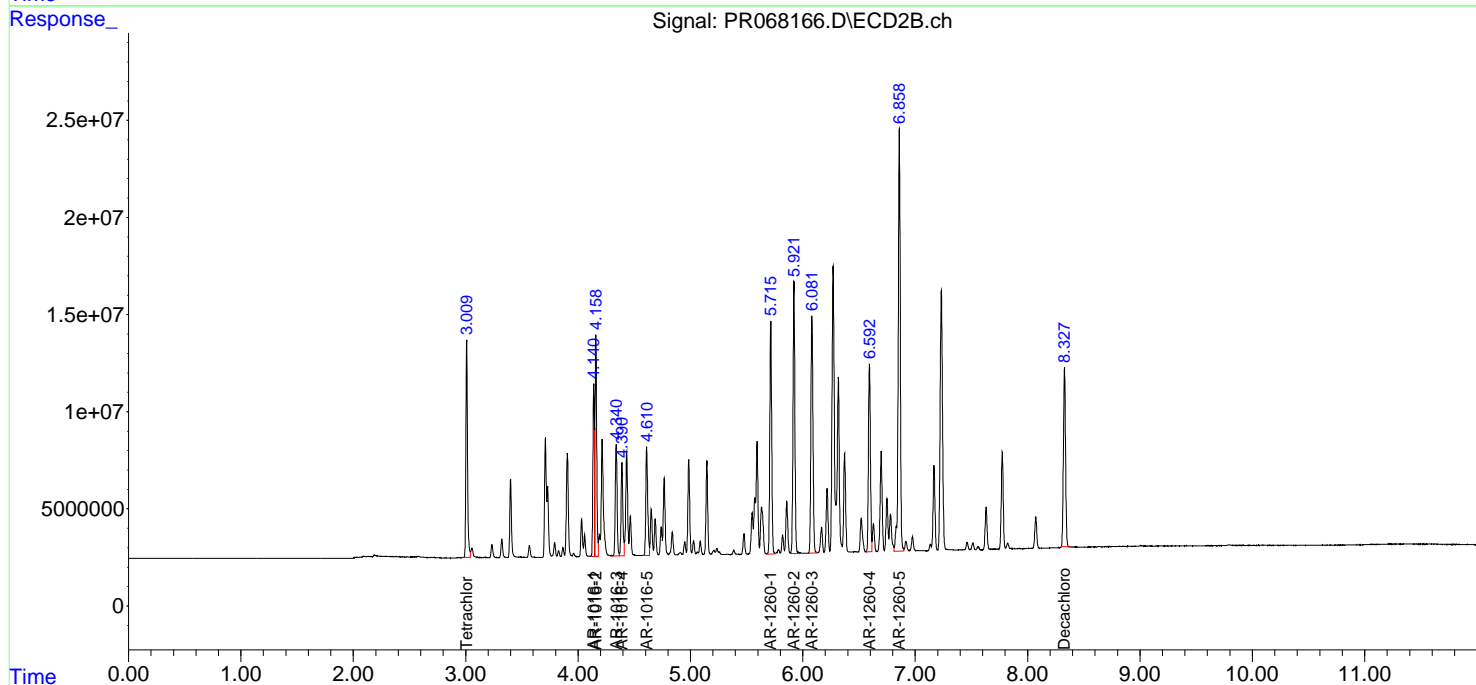
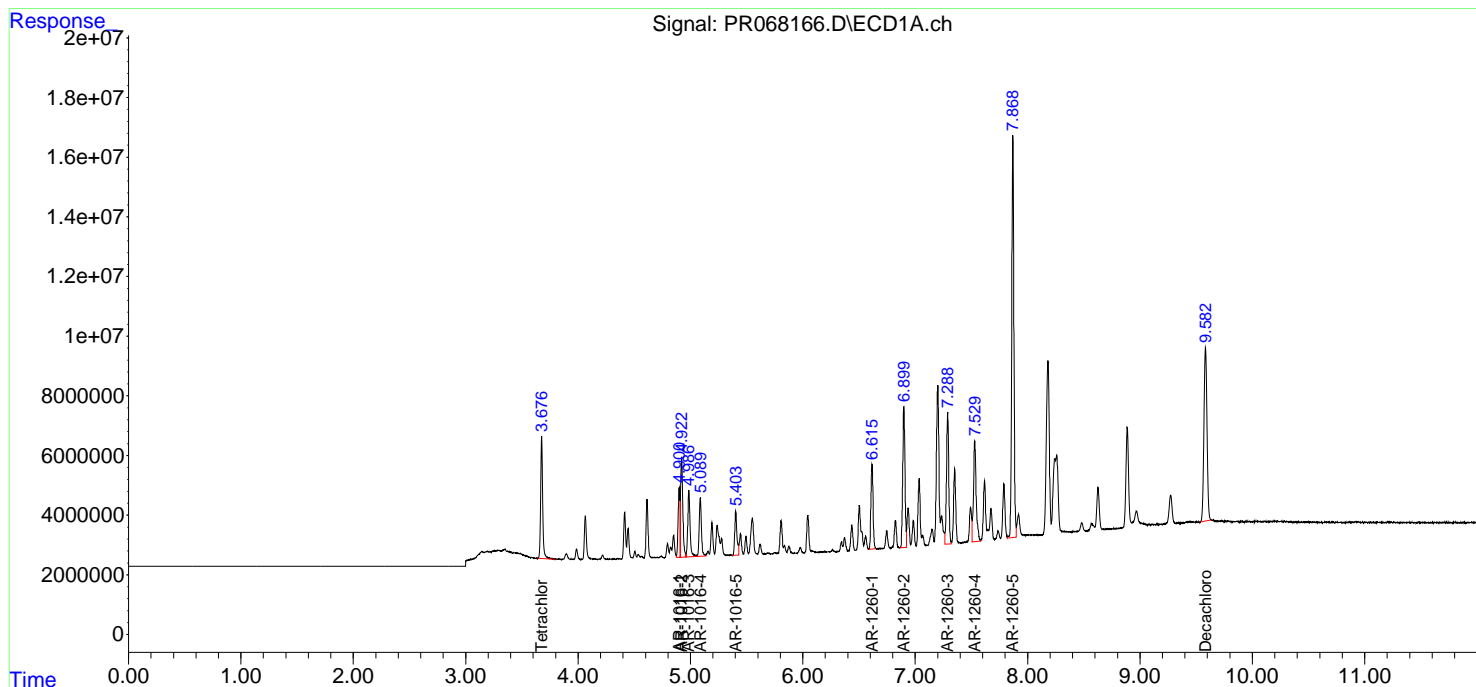
(f)=RT Delta > 1/2 Window (#)=Amounts differ by > 25% (m)=manual int.

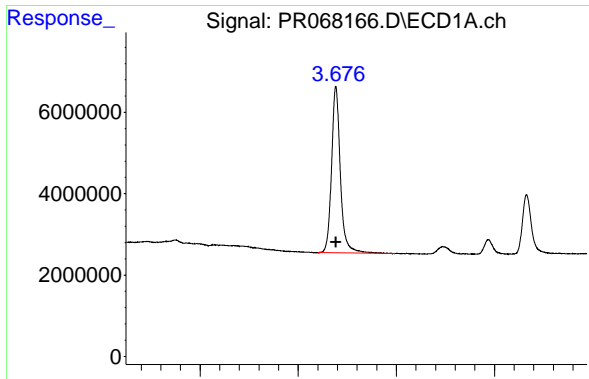
Data Path : Z:\pestpcbsrv\HPCHEM1\ECD_R\Data\PR081224\
 Data File : PR068166.D
 Signal(s) : Signal #1: ECD1A.ch Signal #2: ECD2B.ch
 Acq On : 12 Aug 2024 17:30
 Operator : AJ\MA
 Sample : PB162655BS
 Misc :
 ALS Vial : 28 Sample Multiplier: 1

Instrument :
 ECD_R
 ClientSampleId :
 PB162655BS

Integration File signal 1: autoint1.e
 Integration File signal 2: autoint2.e
 Quant Time: Aug 13 04:08:43 2024
 Quant Method : Z:\pestpcbsrv\HPCHEM1\ECD_R\Method\PR080824.M
 Quant Title : GC EXTRACTABLES
 QLast Update : Thu Aug 08 22:24:34 2024
 Response via : Initial Calibration
 Integrator: ChemStation

Volume Inj. : 2 µl
 Signal #1 Phase : ZB-MR1 Signal #2 Phase: ZB-MR2
 Signal #1 Info : 30Mx0.32mmx 0.50µ Signal #2 Info : 30M x 0.32mm x 0.25µm

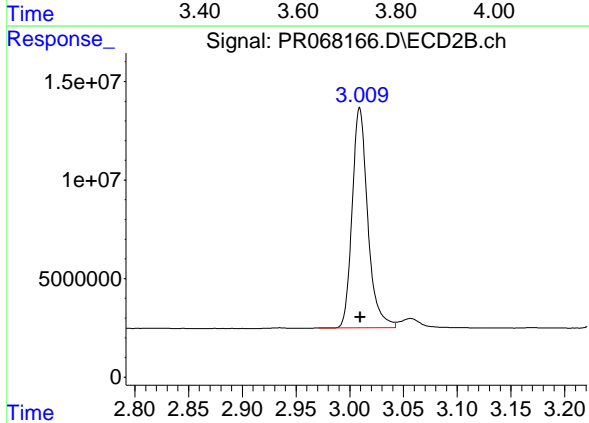




#1 Tetrachloro-m-xylene

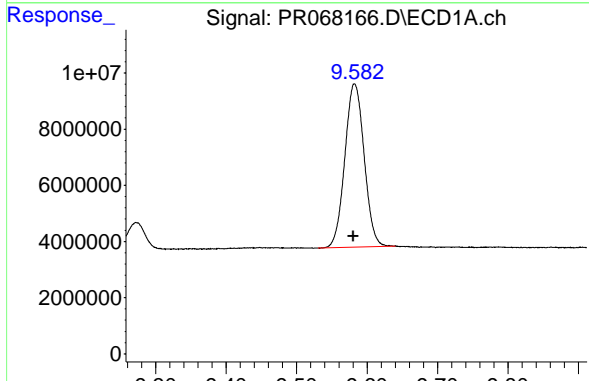
R.T.: 3.677 min
 Delta R.T.: 0.000 min
 Response: 51068619
 Conc: 20.56 ng/ml

Instrument :
 ECD_R
 ClientSampleId :
 PB162655BS



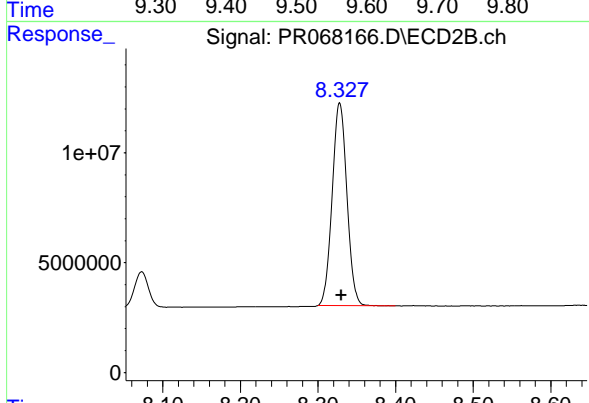
#1 Tetrachloro-m-xylene

R.T.: 3.009 min
 Delta R.T.: 0.000 min
 Response: 113052097
 Conc: 22.72 ng/ml



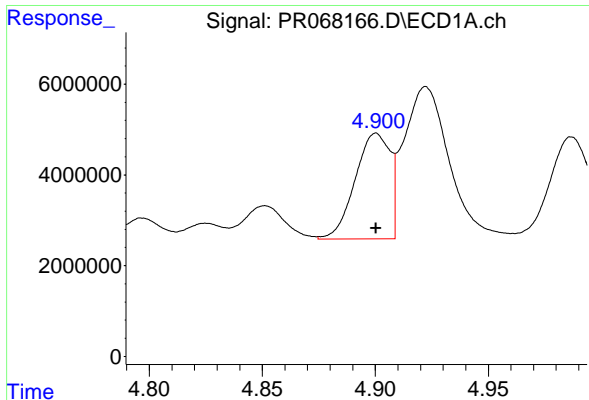
#2 Decachlorobiphenyl

R.T.: 9.582 min
 Delta R.T.: 0.002 min
 Response: 110726846
 Conc: 24.66 ng/ml



#2 Decachlorobiphenyl

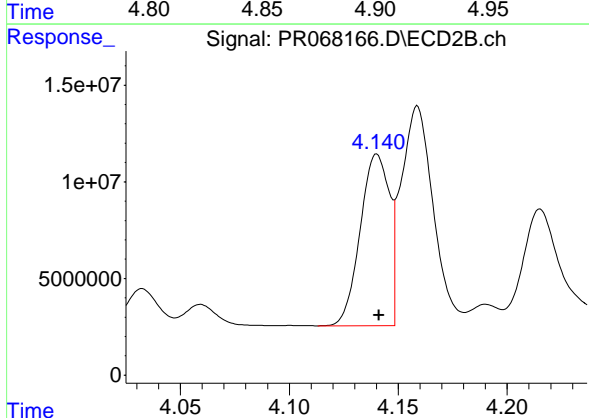
R.T.: 8.328 min
 Delta R.T.: -0.002 min
 Response: 122314528
 Conc: 23.32 ng/ml



#3 AR-1016-1

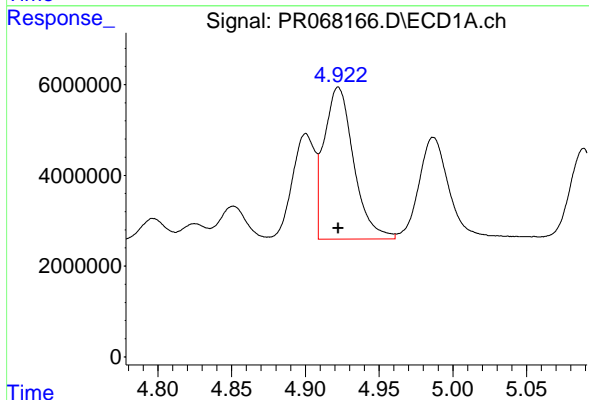
R.T.: 4.900 min
 Delta R.T.: 0.000 min
 Response: 25012904
 Conc: 424.45 ng/ml

Instrument :
 ECD_R
 ClientSampleId :
 PB162655BS



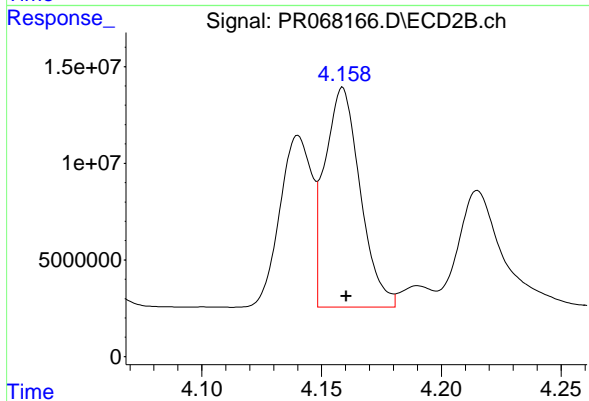
#3 AR-1016-1

R.T.: 4.140 min
 Delta R.T.: 0.000 min
 Response: 82752611
 Conc: 472.08 ng/ml



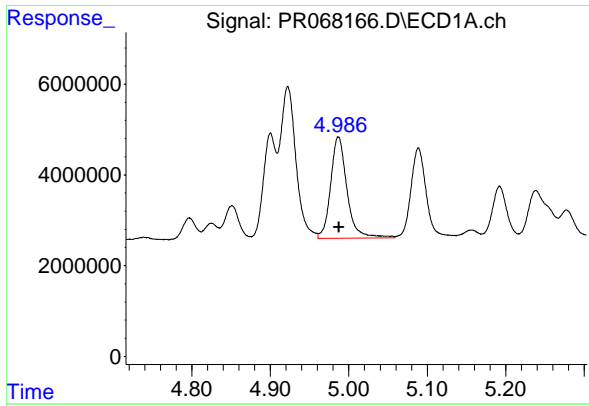
#4 AR-1016-2

R.T.: 4.922 min
 Delta R.T.: 0.000 min
 Response: 46788872
 Conc: 417.81 ng/ml



#4 AR-1016-2

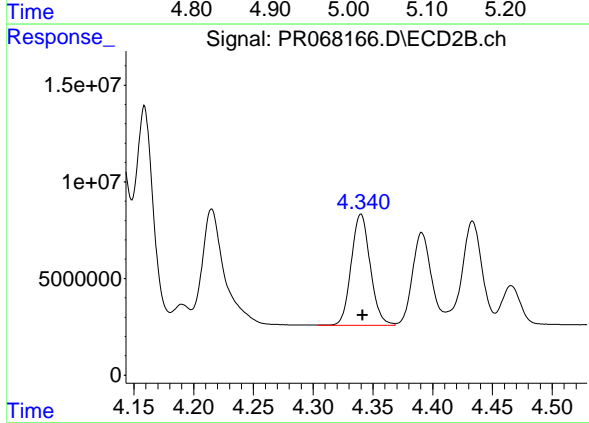
R.T.: 4.159 min
 Delta R.T.: -0.001 min
 Response: 117048884
 Conc: 476.43 ng/ml



#5 AR-1016-3

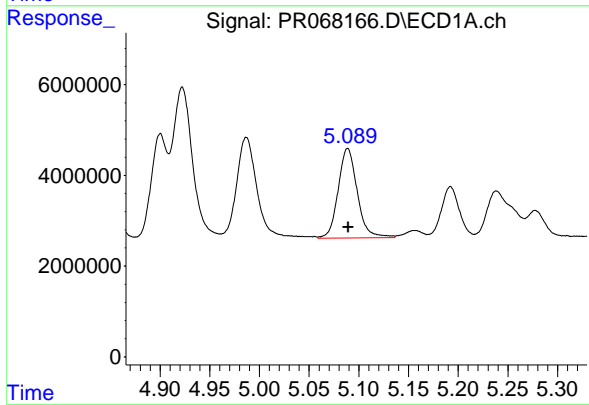
R.T.: 4.987 min
 Delta R.T.: 0.000 min
 Response: 32331515
 Conc: 429.23 ng/ml

Instrument :
 ECD_R
 ClientSampleId :
 PB162655BS



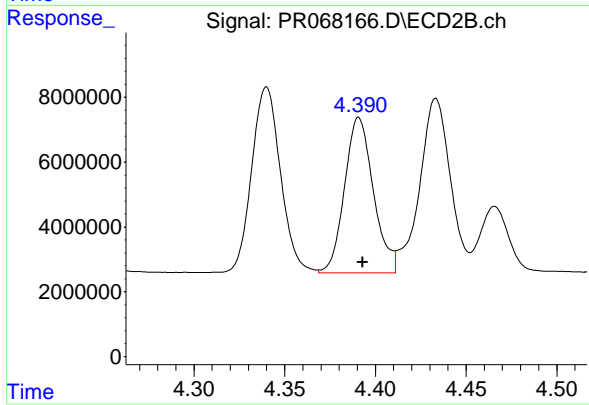
#5 AR-1016-3

R.T.: 4.340 min
 Delta R.T.: -0.001 min
 Response: 63883121
 Conc: 471.36 ng/ml



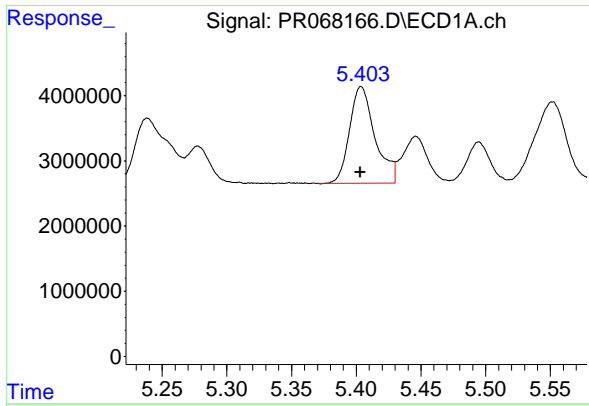
#6 AR-1016-4

R.T.: 5.089 min
 Delta R.T.: 0.000 min
 Response: 26388528
 Conc: 440.64 ng/ml



#6 AR-1016-4

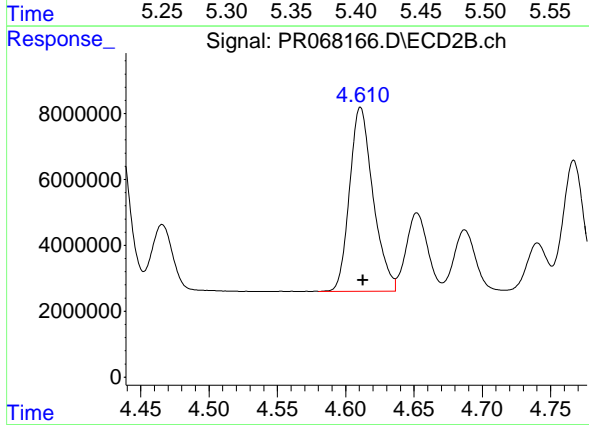
R.T.: 4.391 min
 Delta R.T.: -0.002 min
 Response: 53130744
 Conc: 468.24 ng/ml



#7 AR-1016-5

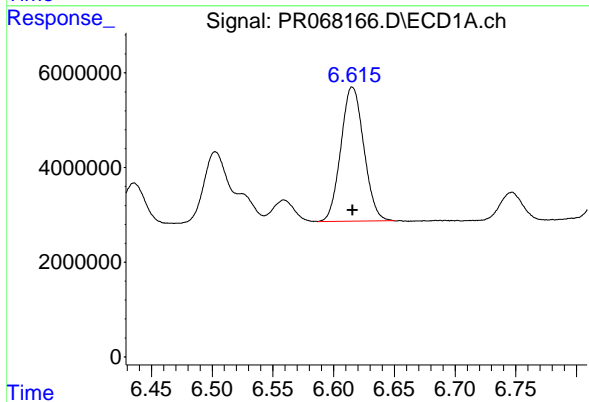
R.T.: 5.404 min
 Delta R.T.: 0.000 min
 Response: 20247534
 Conc: 419.89 ng/ml

Instrument :
 ECD_R
 ClientSampleId :
 PB162655BS



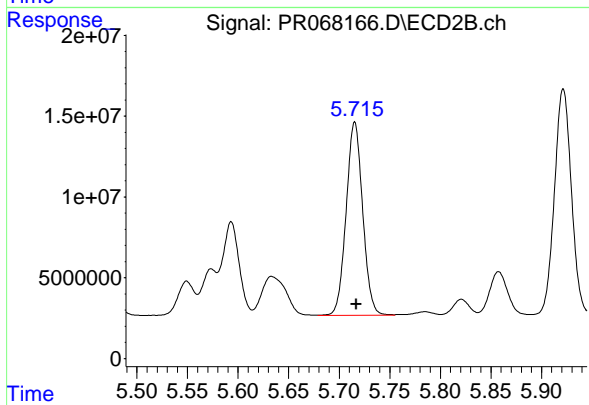
#7 AR-1016-5

R.T.: 4.611 min
 Delta R.T.: -0.002 min
 Response: 66927352
 Conc: 477.08 ng/ml



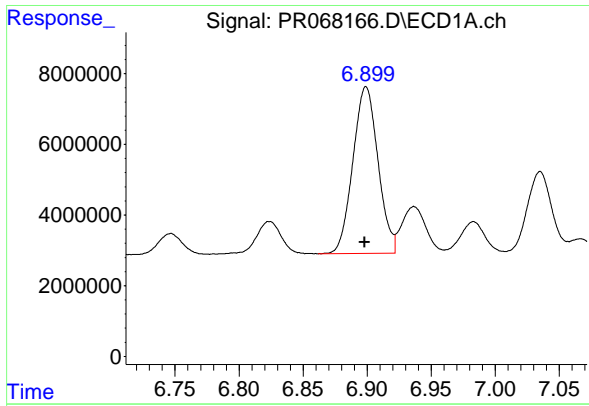
#31 AR-1260-1

R.T.: 6.615 min
 Delta R.T.: 0.000 min
 Response: 37453872
 Conc: 416.44 ng/ml



#31 AR-1260-1

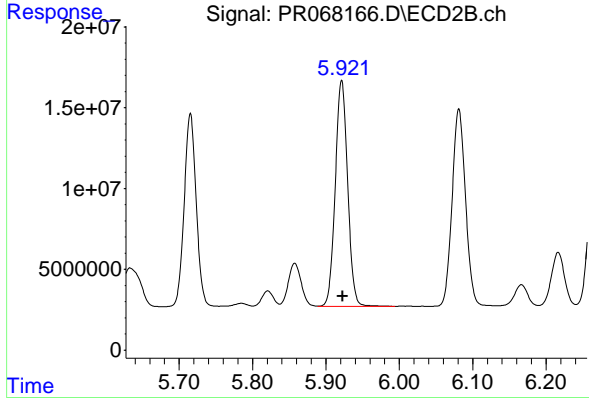
R.T.: 5.715 min
 Delta R.T.: -0.002 min
 Response: 136154441
 Conc: 461.19 ng/ml



#32 AR-1260-2

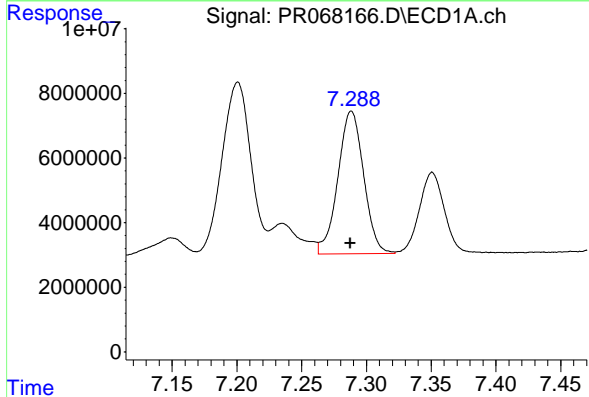
R.T.: 6.899 min
 Delta R.T.: 0.000 min
 Response: 64279089
 Conc: 444.93 ng/ml

Instrument :
 ECD_R
 ClientSampleId :
 PB162655BS



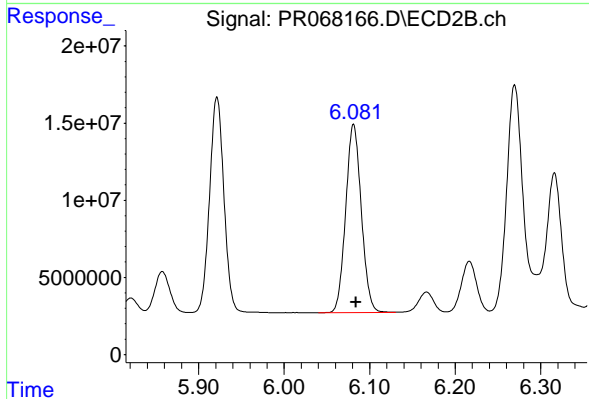
#32 AR-1260-2

R.T.: 5.921 min
 Delta R.T.: -0.001 min
 Response: 164060165
 Conc: 476.03 ng/ml



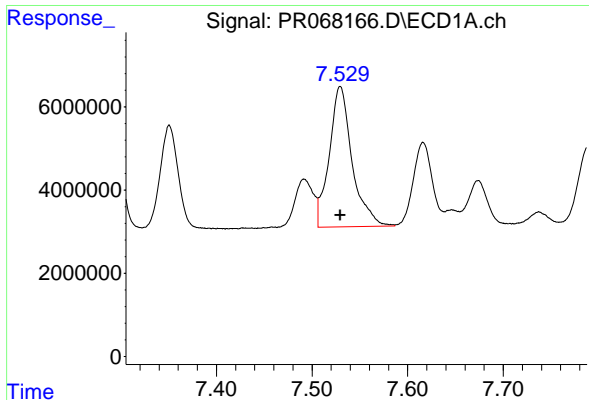
#33 AR-1260-3

R.T.: 7.288 min
 Delta R.T.: 0.000 min
 Response: 61350597
 Conc: 431.35 ng/ml



#33 AR-1260-3

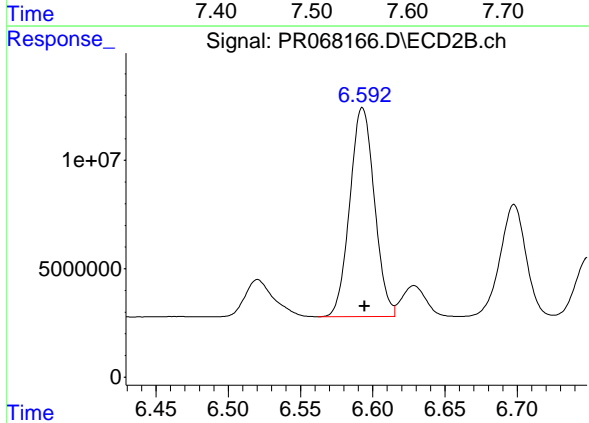
R.T.: 6.081 min
 Delta R.T.: -0.003 min
 Response: 154882102
 Conc: 479.03 ng/ml



#34 AR-1260-4

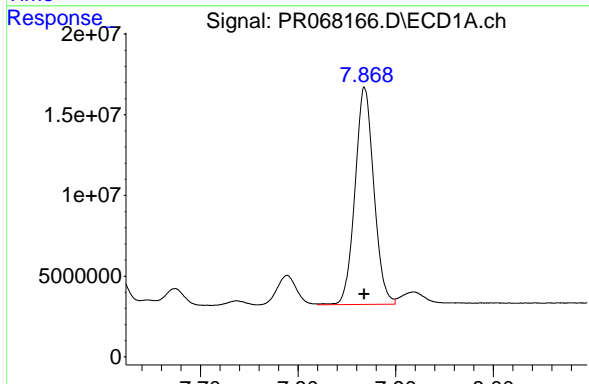
R.T.: 7.530 min
 Delta R.T.: 0.000 min
 Response: 55950891
 Conc: 440.11 ng/ml

Instrument :
 ECD_R
 ClientSampleId :
 PB162655BS



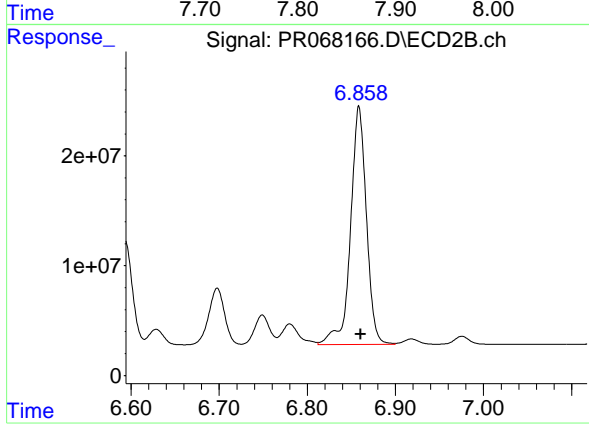
#34 AR-1260-4

R.T.: 6.593 min
 Delta R.T.: -0.002 min
 Response: 114543627
 Conc: 462.37 ng/ml



#35 AR-1260-5

R.T.: 7.868 min
 Delta R.T.: 0.000 min
 Response: 180541029
 Conc: 472.32 ng/ml



#35 AR-1260-5

R.T.: 6.859 min
 Delta R.T.: -0.002 min
 Response: 272121055
 Conc: 483.07 ng/ml