

Data Path : Z:\pestpcbsrv\HPCHEM1\ECD_R\Data\PR081224\
 Data File : PR068184.D
 Signal(s) : Signal #1: ECD1A.ch Signal #2: ECD2B.ch
 Acq On : 12 Aug 2024 23:08
 Operator : AJ\MA
 Sample : I.BLK
 Misc :
 ALS Vial : 2 Sample Multiplier: 1

Instrument :
 ECD_R
ClientSampleId :
 I.BLK

Manual Integrations
APPROVED
 Reviewed By :Yogesh Patel 08/14/2024
 Supervised By :Ankita Jodhani 08/14/2024

Integration File signal 1: autoint1.e
 Integration File signal 2: autoint2.e
 Quant Time: Aug 13 04:24:11 2024
 Quant Method : Z:\pestpcbsrv\HPCHEM1\ECD_R\Method\PR080824.M
 Quant Title : GC EXTRACTABLES
 QLast Update : Thu Aug 08 22:24:34 2024
 Response via : Initial Calibration
 Integrator: ChemStation

Volume Inj. : 2 µl
 Signal #1 Phase : ZB-MR1 Signal #2 Phase: ZB-MR2
 Signal #1 Info : 30Mx0.32mmx 0.50µ Signal #2 Info : 30M x 0.32mm x 0.25µm

Compound	RT#1	RT#2	Resp#1	Resp#2	ng/ml	ng/ml

System Monitoring Compounds						
1) SA Tetrachlo...	3.676	3.009	48855926	110.4E6	19.670	22.186
2) SA Decachlor...	9.581	8.325	109.7E6	116.5E6	24.422	22.219m

Target Compounds

(f)=RT Delta > 1/2 Window (#)=Amounts differ by > 25% (m)=manual int.

Data Path : Z:\pestpcbsrv\HPCHEM1\ECD_R\Data\PR081224\
 Data File : PR068184.D
 Signal(s) : Signal #1: ECD1A.ch Signal #2: ECD2B.ch
 Acq On : 12 Aug 2024 23:08
 Operator : AJ\MA
 Sample : I.BLK
 Misc :
 ALS Vial : 2 Sample Multiplier: 1

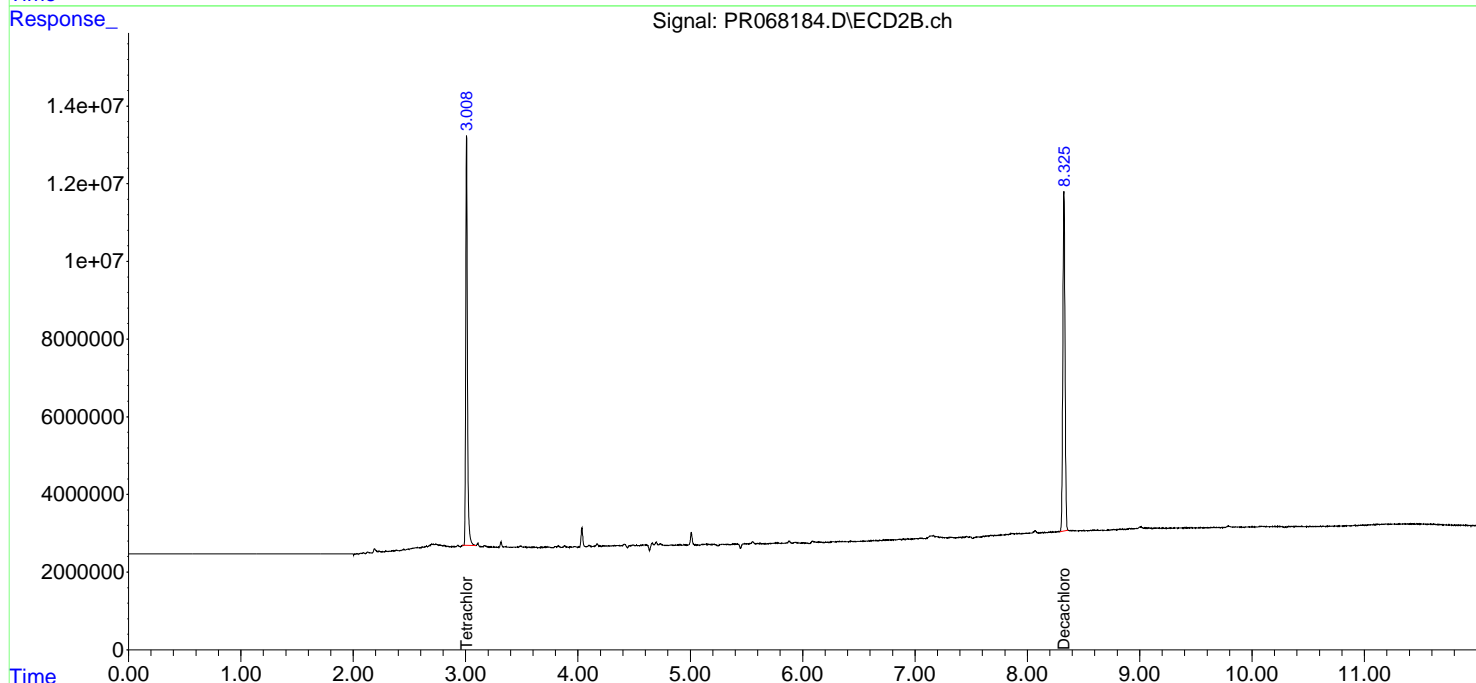
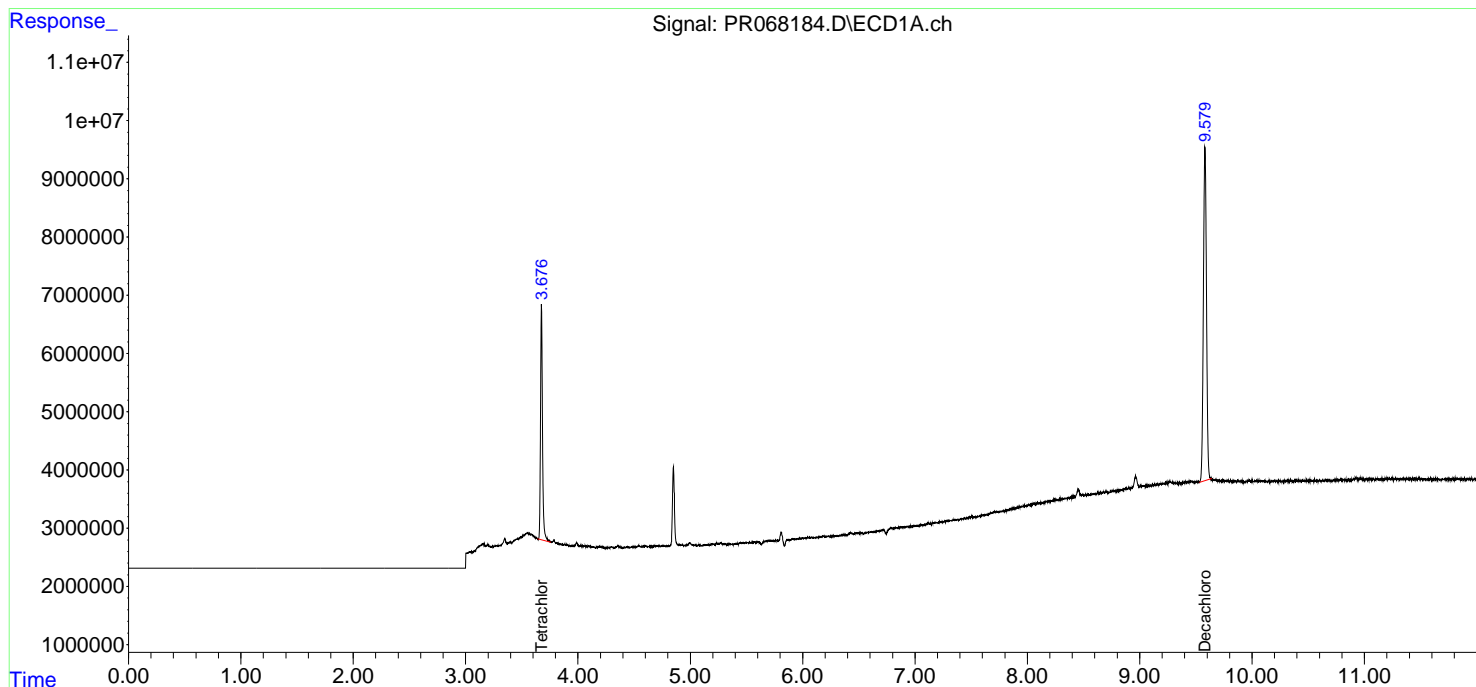
Instrument :
 ECD_R
ClientSampleId :
 I.BLK

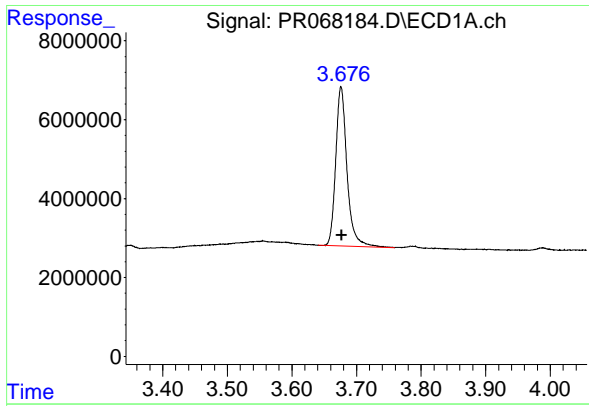
Manual Integrations
APPROVED

Reviewed By :Yogesh Patel 08/14/2024
 Supervised By :Ankita Jodhani 08/14/2024

Integration File signal 1: autoint1.e
 Integration File signal 2: autoint2.e
 Quant Time: Aug 13 04:24:11 2024
 Quant Method : Z:\pestpcbsrv\HPCHEM1\ECD_R\Method\PR080824.M
 Quant Title : GC EXTRACTABLES
 QLast Update : Thu Aug 08 22:24:34 2024
 Response via : Initial Calibration
 Integrator: ChemStation

Volume Inj. : 2 µl
 Signal #1 Phase : ZB-MR1 Signal #2 Phase: ZB-MR2
 Signal #1 Info : 30Mx0.32mmx 0.50µm Signal #2 Info : 30M x 0.32mm x 0.25µm





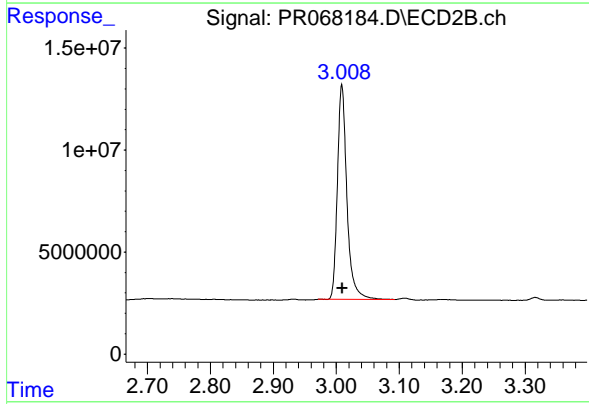
#1 Tetrachloro-m-xylene

R.T.: 3.676 min
 Delta R.T.: 0.000 min
 Response: 48855926
 Conc: 19.67 ng/ml

Instrument : ECD_R
 Client Sample Id : I.BLK

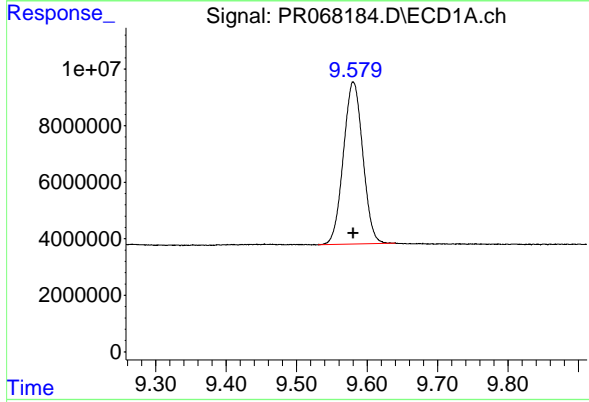
Manual Integrations
 APPROVED

Reviewed By :Yogesh Patel 08/14/2024
 Supervised By :Ankita Jodhani 08/14/2024



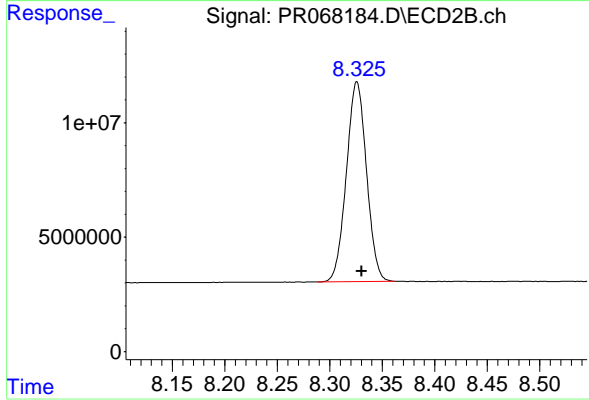
#1 Tetrachloro-m-xylene

R.T.: 3.009 min
 Delta R.T.: 0.000 min
 Response: 110397794
 Conc: 22.19 ng/ml



#2 Decachlorobiphenyl

R.T.: 9.581 min
 Delta R.T.: 0.000 min
 Response: 109656242
 Conc: 24.42 ng/ml



#2 Decachlorobiphenyl

R.T.: 8.325 min
 Delta R.T.: -0.005 min
 Response: 116533664
 Conc: 22.22 ng/ml m