

Data Path : Z:\pestpcbsrv\HPCHEM1\ECD_R\Data\PR081519\
 Data File : PR040351.D
 Signal(s) : Signal #1: ECD1A.ch Signal #2: ECD2B.ch
 Acq On : 15 Aug 2019 12:26
 Operator : SM\AJ
 Sample : AR1660ICC750
 Misc :
 ALS Vial : 4 Sample Multiplier: 1

Instrument :
 ECD_R
 ClientSampleId :
 AR1660ICC750

Integration File signal 1: autoint1.e
 Integration File signal 2: autoint2.e
 Quant Time: Aug 15 13:58:05 2019
 Quant Method : Z:\pestpcbsrv\HPCHEM1\ECD_R\Method\PR081519.M
 Quant Title : GC EXTRACTABLES
 QLast Update : Thu Aug 15 13:55:02 2019
 Response via : Initial Calibration
 Integrator: ChemStation

Volume Inj. : 2 µl
 Signal #1 Phase : ZB-MR1 Signal #2 Phase: ZB-MR2
 Signal #1 Info : 30Mx0.32mmx 0.50µ Signal #2 Info : 30M x 0.32mm x 0.25µm

Compound	RT#1	RT#2	Resp#1	Resp#2	ng/ml	ng/ml

System Monitoring Compounds						
1) SA Tetrachlo...	3.756	4.600	76886489	378.1E6	70.564	69.435
2) SA Decachlor...	8.681	10.319	201.4E6	808.5E6	72.329	71.917
Target Compounds						
3) L1 AR-1016-1	4.820	5.753	33517707	159.1E6	707.833	705.430
4) L1 AR-1016-2	4.837	5.775	57180770	245.3E6	707.013	693.688
5) L1 AR-1016-3	5.010	5.837	29471145	153.4E6	735.966	695.411
6) L1 AR-1016-4	5.051	5.936	23054360	129.3E6	722.239	701.556
7) L1 AR-1016-5	5.259	6.223	32090260	126.2E6	713.743	701.599
31) L7 AR-1260-1	6.272	7.332	74423369	269.7E6	717.216	703.234
32) L7 AR-1260-2	6.457	7.585	95267894	336.9E6	713.073	708.590
33) L7 AR-1260-3	6.608	7.940	89602469	272.2E6	708.042	708.098
34) L7 AR-1260-4	7.071	8.168	83236609	320.1E6	708.519	709.932
35) L7 AR-1260-5	7.310	8.493	218.7E6	714.5E6	717.565	717.600

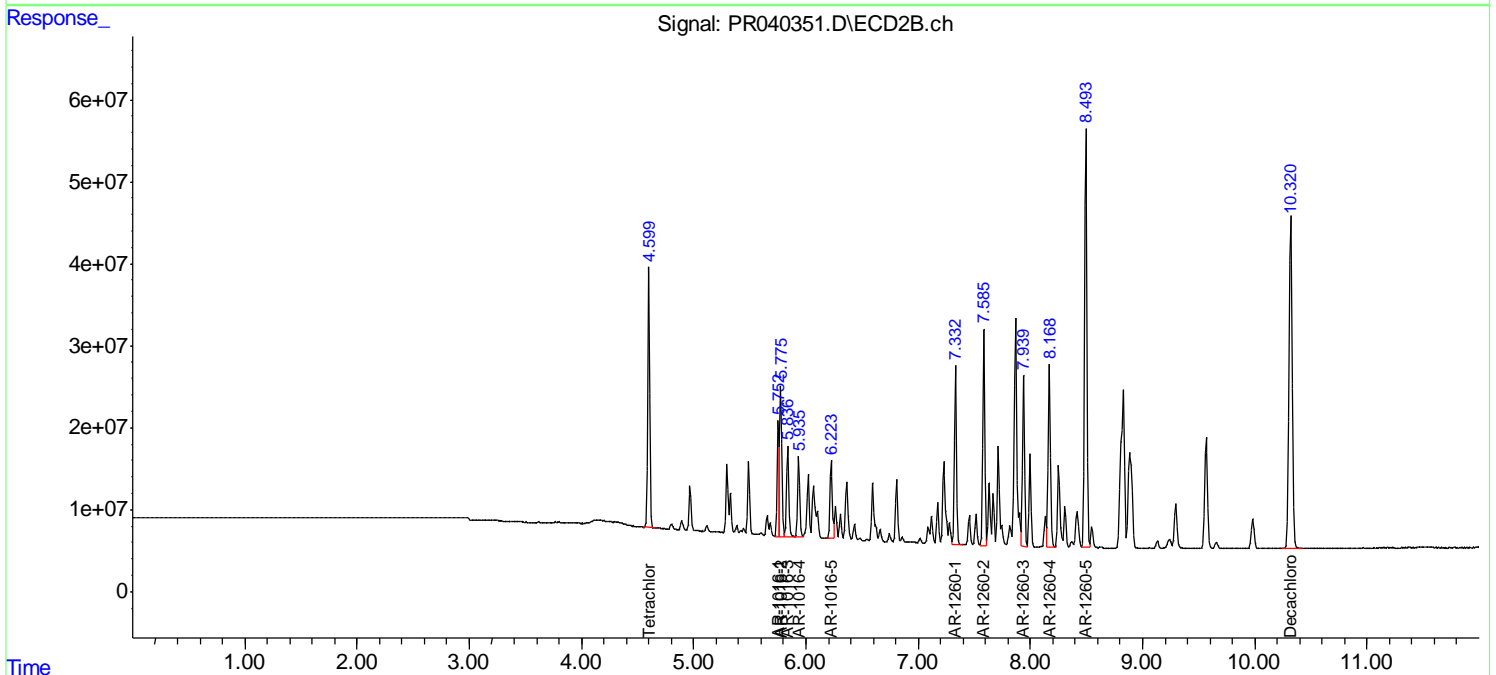
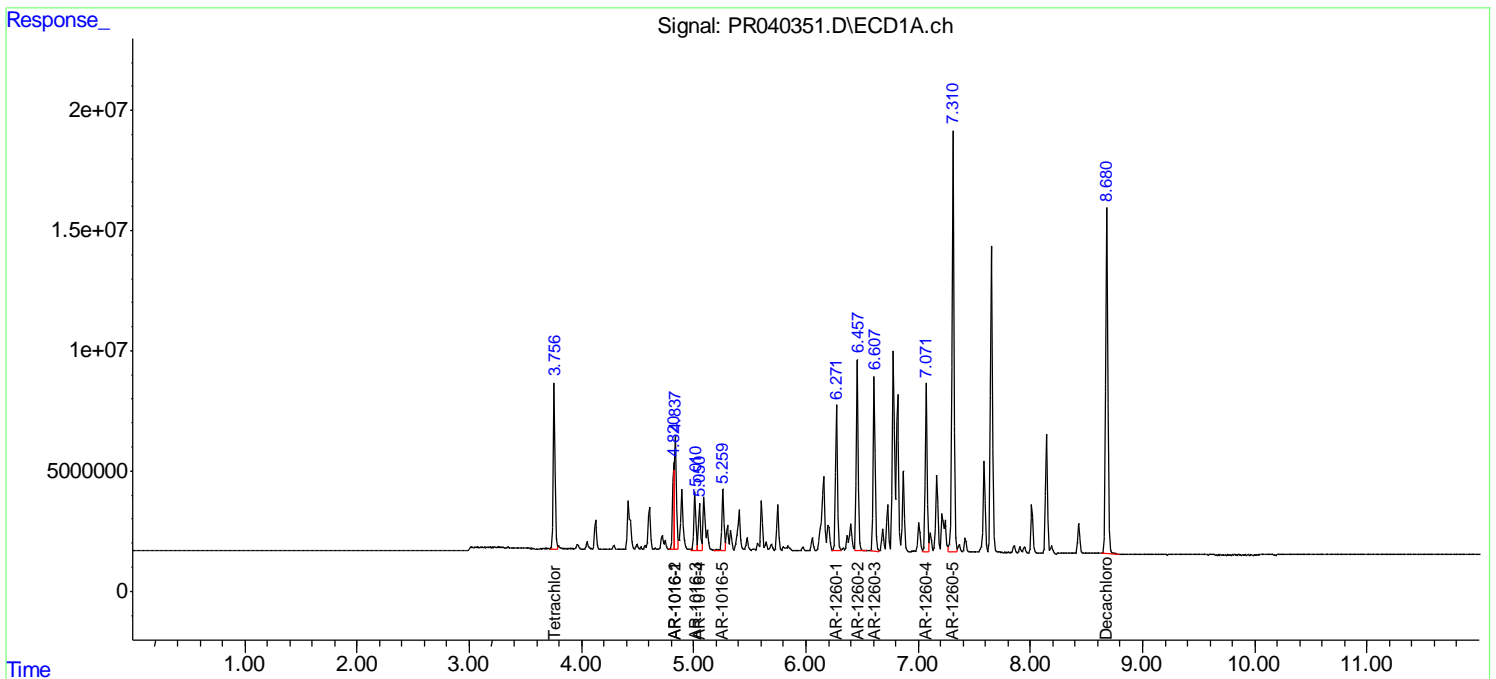
(f)=RT Delta > 1/2 Window (#)=Amounts differ by > 25% (m)=manual int.

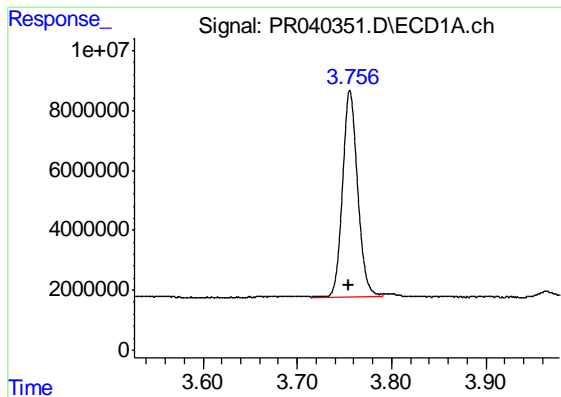
Data Path : Z:\pestpcbsrv\HPCHEM1\ECD_R\Data\PR081519\
 Data File : PR040351.D
 Signal(s) : Signal #1: ECD1A.ch Signal #2: ECD2B.ch
 Acq On : 15 Aug 2019 12:26
 Operator : SM\AJ
 Sample : AR1660ICC750
 Misc :
 ALS Vial : 4 Sample Multiplier: 1

Instrument :
 ECD_R
 ClientSampled :
 AR1660ICC750

Integration File signal 1: autoint1.e
 Integration File signal 2: autoint2.e
 Quant Time: Aug 15 13:58:05 2019
 Quant Method : Z:\pestpcbsrv\HPCHEM1\ECD_R\Method\PR081519.M
 Quant Title : GC EXTRACTABLES
 QLast Update : Thu Aug 15 13:55:02 2019
 Response via : Initial Calibration
 Integrator: ChemStation

Volume Inj. : 2 µl
 Signal #1 Phase : ZB-MR1 Signal #2 Phase: ZB-MR2
 Signal #1 Info : 30Mx0.32mmx 0.50µ Signal #2 Info : 30M x 0.32mm x 0.25µm

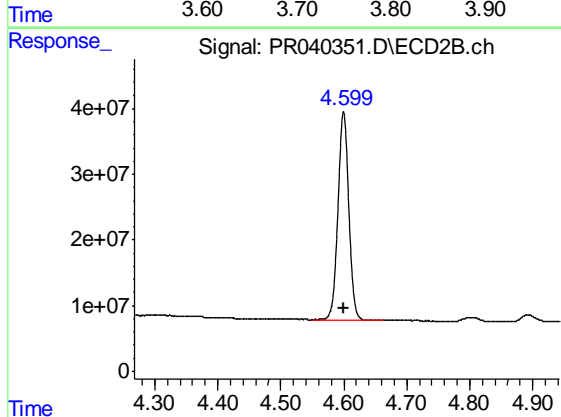




#1 Tetrachloro-m-xylene

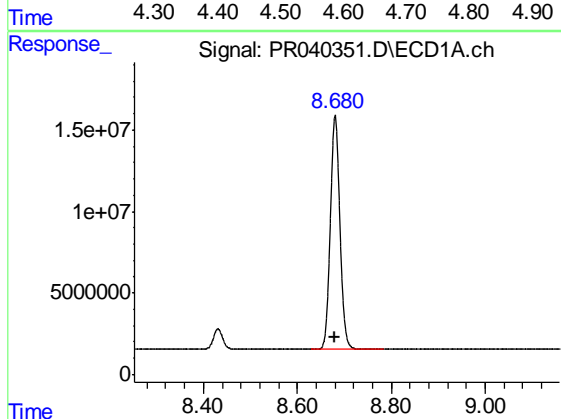
R.T.: 3.756 min
 Delta R.T.: 0.000 min
 Response: 76886489
 Conc: 70.56 ng/ml

Instrument :
 ECD_R
 ClientSampleId :
 AR1660ICC750



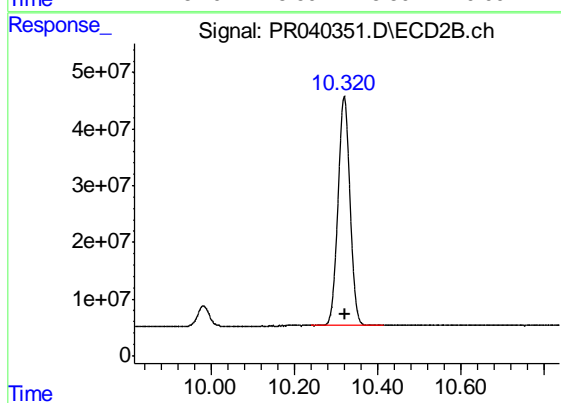
#1 Tetrachloro-m-xylene

R.T.: 4.600 min
 Delta R.T.: 0.000 min
 Response: 378108267
 Conc: 69.44 ng/ml



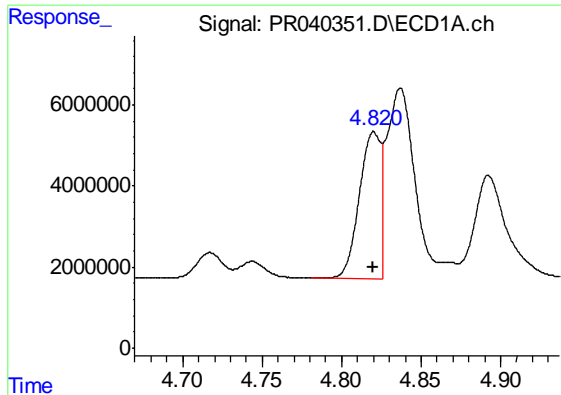
#2 Decachlorobiphenyl

R.T.: 8.681 min
 Delta R.T.: 0.000 min
 Response: 201399820
 Conc: 72.33 ng/ml



#2 Decachlorobiphenyl

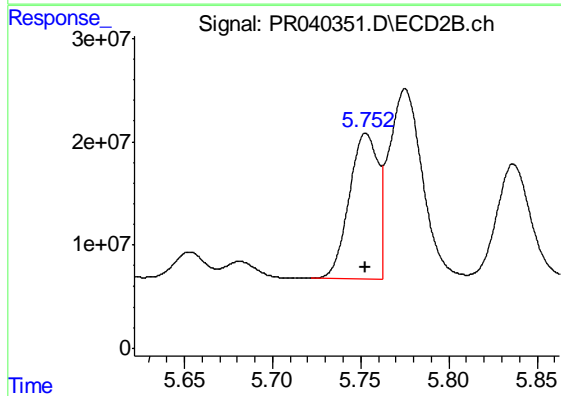
R.T.: 10.319 min
 Delta R.T.: 0.000 min
 Response: 808465628
 Conc: 71.92 ng/ml



#3 AR-1016-1

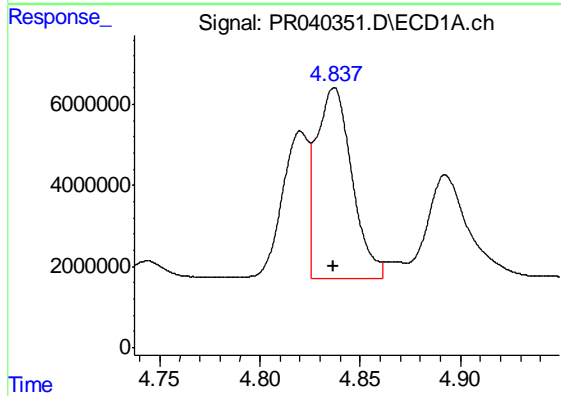
R.T.: 4.820 min
 Delta R.T.: 0.000 min
 Response: 33517707
 Conc: 707.83 ng/ml

Instrument :
 ECD_R
 ClientSampleId :
 AR1660ICC750



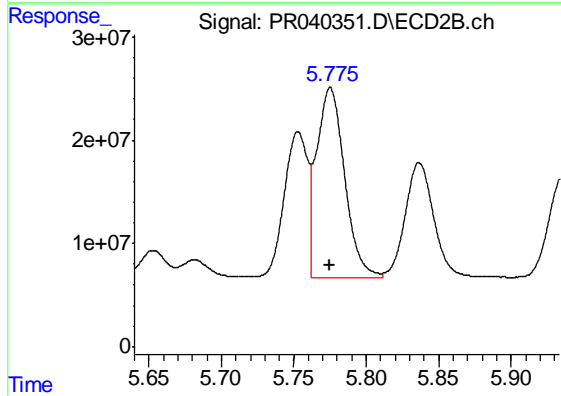
#3 AR-1016-1

R.T.: 5.753 min
 Delta R.T.: 0.000 min
 Response: 159104996
 Conc: 705.43 ng/ml



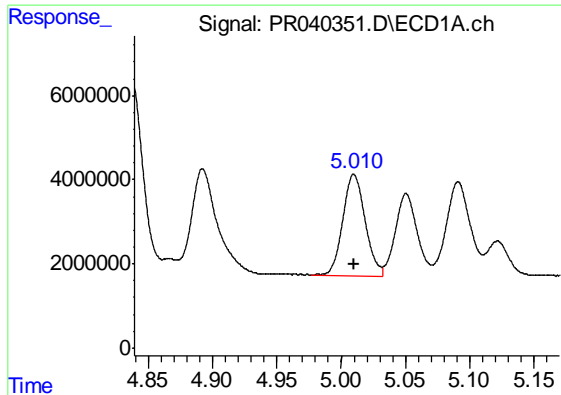
#4 AR-1016-2

R.T.: 4.837 min
 Delta R.T.: 0.000 min
 Response: 57180770
 Conc: 707.01 ng/ml



#4 AR-1016-2

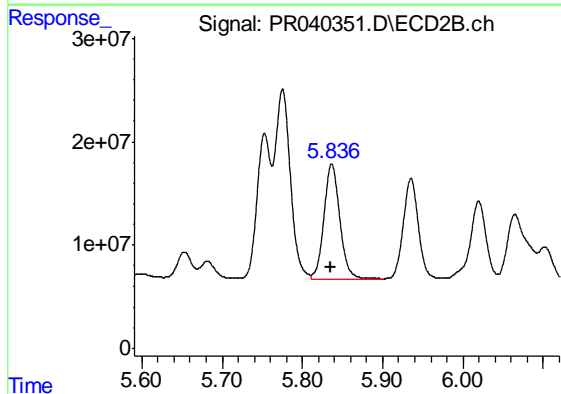
R.T.: 5.775 min
 Delta R.T.: 0.000 min
 Response: 245278931
 Conc: 693.69 ng/ml



#5 AR-1016-3

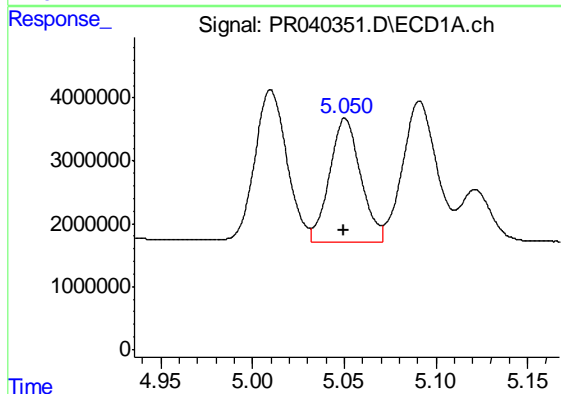
R.T.: 5.010 min
 Delta R.T.: 0.000 min
 Response: 29471145
 Conc: 735.97 ng/ml

Instrument :
 ECD_R
 ClientSampleId :
 AR1660ICC750



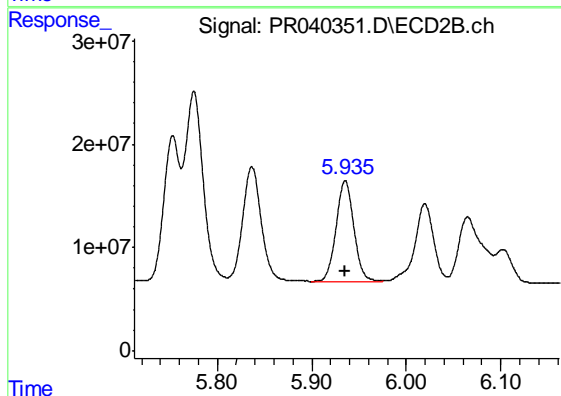
#5 AR-1016-3

R.T.: 5.837 min
 Delta R.T.: 0.000 min
 Response: 153413980
 Conc: 695.41 ng/ml



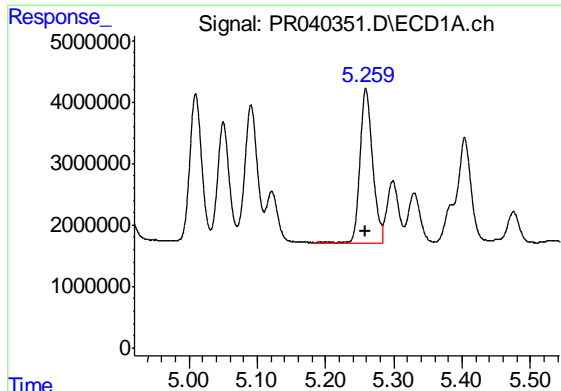
#6 AR-1016-4

R.T.: 5.051 min
 Delta R.T.: 0.000 min
 Response: 23054360
 Conc: 722.24 ng/ml



#6 AR-1016-4

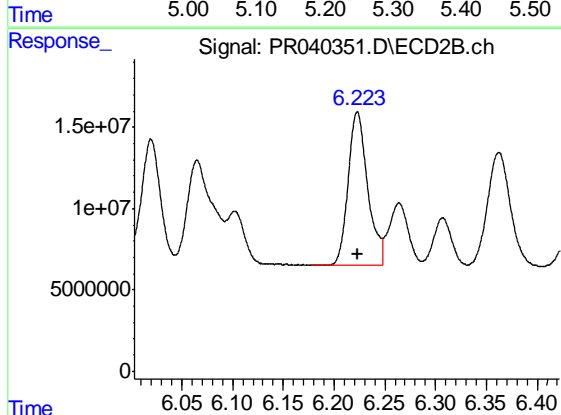
R.T.: 5.936 min
 Delta R.T.: 0.000 min
 Response: 129265514
 Conc: 701.56 ng/ml



#7 AR-1016-5

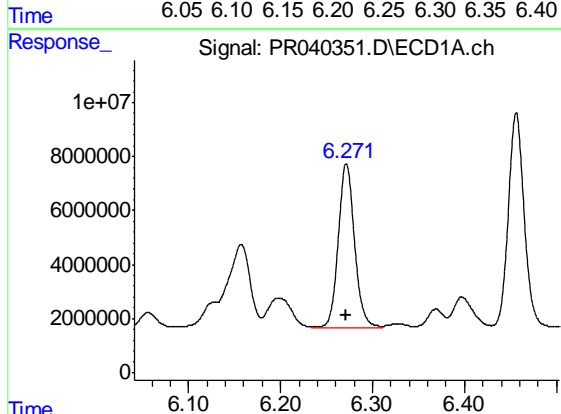
R.T.: 5.259 min
 Delta R.T.: 0.000 min
 Response: 32090260
 Conc: 713.74 ng/ml

Instrument :
 ECD_R
 ClientSampleId :
 AR1660ICC750



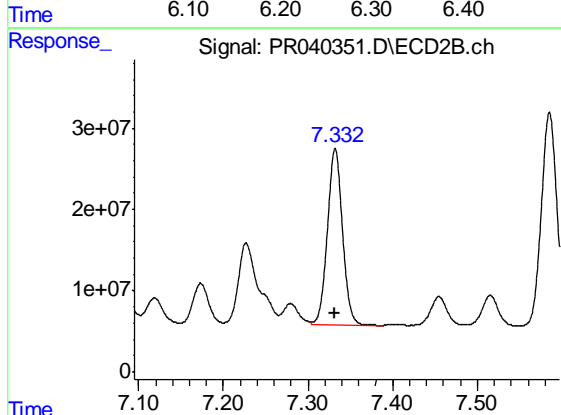
#7 AR-1016-5

R.T.: 6.223 min
 Delta R.T.: 0.000 min
 Response: 126235452
 Conc: 701.60 ng/ml



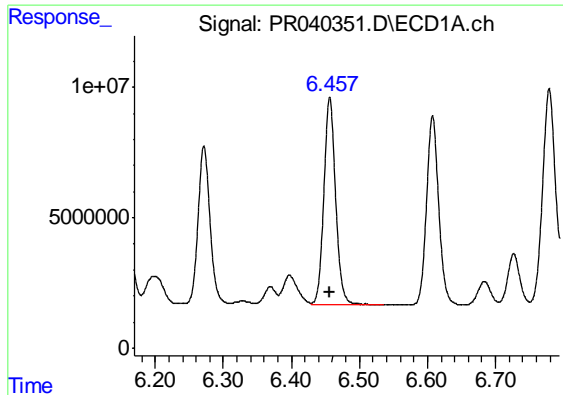
#31 AR-1260-1

R.T.: 6.272 min
 Delta R.T.: 0.000 min
 Response: 74423369
 Conc: 717.22 ng/ml



#31 AR-1260-1

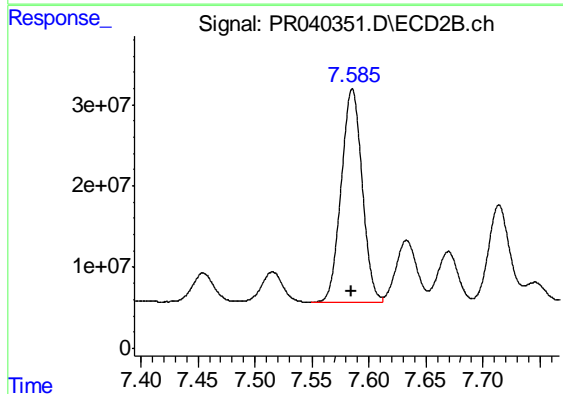
R.T.: 7.332 min
 Delta R.T.: 0.000 min
 Response: 269710052
 Conc: 703.23 ng/ml



#32 AR-1260-2

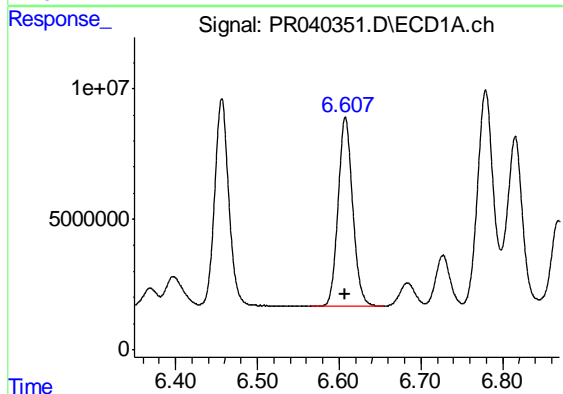
R.T.: 6.457 min
Delta R.T.: 0.000 min
Response: 95267894
Conc: 713.07 ng/ml

Instrument :
ECD_R
ClientSampleId :
AR1660ICC750



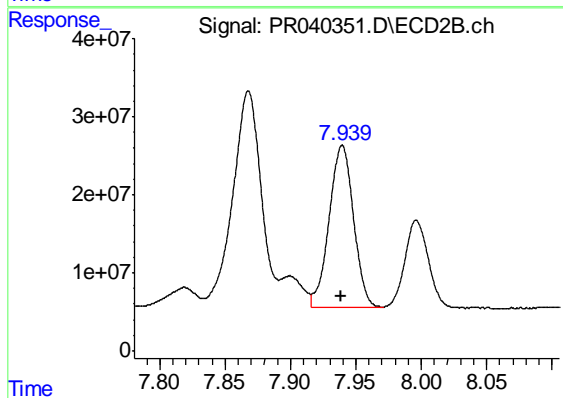
#32 AR-1260-2

R.T.: 7.585 min
Delta R.T.: 0.000 min
Response: 336948489
Conc: 708.59 ng/ml



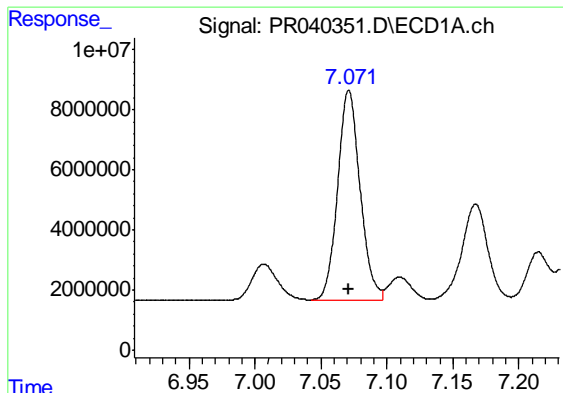
#33 AR-1260-3

R.T.: 6.608 min
Delta R.T.: 0.000 min
Response: 89602469
Conc: 708.04 ng/ml



#33 AR-1260-3

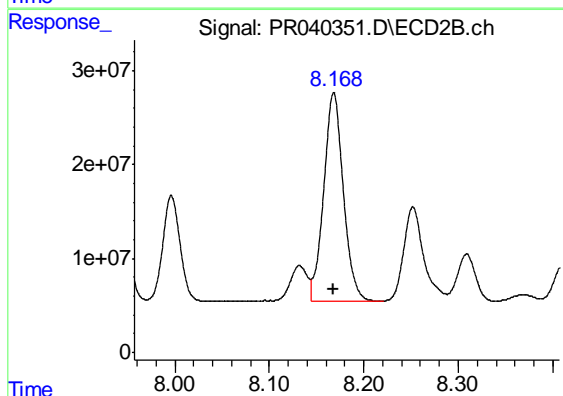
R.T.: 7.940 min
Delta R.T.: 0.000 min
Response: 272162938
Conc: 708.10 ng/ml



#34 AR-1260-4

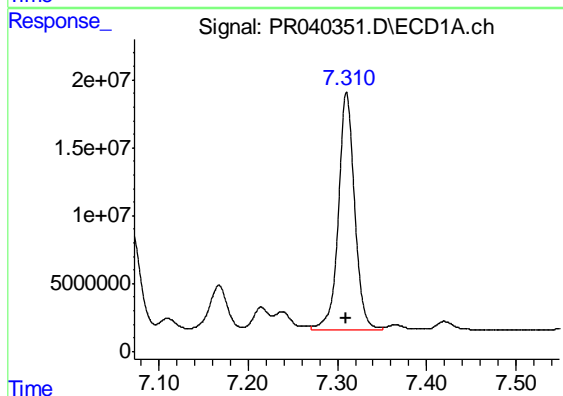
R.T.: 7.071 min
Delta R.T.: 0.000 min
Response: 83236609
Conc: 708.52 ng/ml

Instrument :
ECD_R
ClientSampleId :
AR1660ICC750



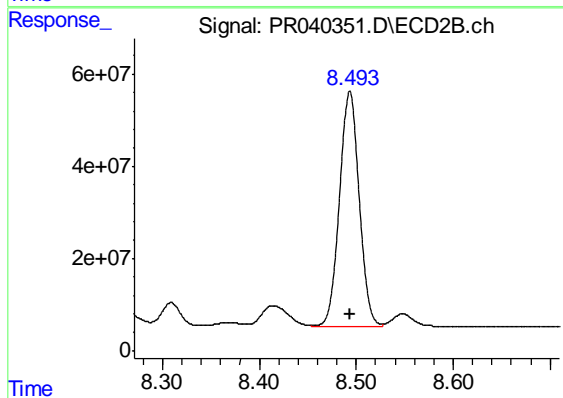
#34 AR-1260-4

R.T.: 8.168 min
Delta R.T.: 0.000 min
Response: 320105617
Conc: 709.93 ng/ml



#35 AR-1260-5

R.T.: 7.310 min
Delta R.T.: 0.000 min
Response: 218670917
Conc: 717.57 ng/ml



#35 AR-1260-5

R.T.: 8.493 min
Delta R.T.: 0.000 min
Response: 714491307
Conc: 717.60 ng/ml