

Data Path : Z:\pestpcbsrv\HPCHEM1\ECD\_R\Data\PR081519\  
 Data File : PR040377.D  
 Signal(s) : Signal #1: ECD1A.ch Signal #2: ECD2B.ch  
 Acq On : 15 Aug 2019 20:18  
 Operator : SM\AJ  
 Sample : K3591-07  
 Misc : AR1232 LOD WATER 25PPB  
 ALS Vial : 16 Sample Multiplier: 1

**Instrument :**  
 ECD\_R  
**ClientSampleId :**  
 LOD-MDL-WATER-01-QT3-2019

**Manual Integrations**  
**APPROVED**  
 Ankita  
 8/16/2019 2:52:02 PM

Integration File signal 1: autoint1.e  
 Integration File signal 2: autoint2.e  
 Quant Time: Aug 16 05:15:05 2019  
 Quant Method : Z:\pestpcbsrv\HPCHEM1\ECD\_R\Method\PR081519.M  
 Quant Title : GC EXTRACTABLES  
 QLast Update : Thu Aug 15 15:16:04 2019  
 Response via : Initial Calibration  
 Integrator: ChemStation

Volume Inj. : 2 µl  
 Signal #1 Phase : ZB-MR1 Signal #2 Phase: ZB-MR2  
 Signal #1 Info : 30Mx0.32mmx 0.50µ Signal #2 Info : 30M x 0.32mm x 0.25µm

Compound	RT#1	RT#2	Resp#1	Resp#2	ng/ml	ng/ml
-----						
System Monitoring Compounds						
1) SA Tetrachlo...	3.756	4.599	13956995	68638268	11.358	11.129
2) SA Decachlor...	8.679	10.317	56836949	225.1E6	19.730	19.398
Target Compounds						
11) L3 AR-1232-1	4.126	4.964	645163	2869415	14.116	13.801m
12) L3 AR-1232-2	4.836	5.488	1171481	1749935	18.896m	15.391m
13) L3 AR-1232-3	5.008	5.773	751378	3933773	25.740	15.427m#
14) L3 AR-1232-4	5.093	5.937	608560	2393820	23.386m	18.581m
15) L3 AR-1232-5	5.260	6.018	678807	1217781	22.461m	13.393m#
-----						

(f)=RT Delta > 1/2 Window (#)=Amounts differ by > 25% (m)=manual int.

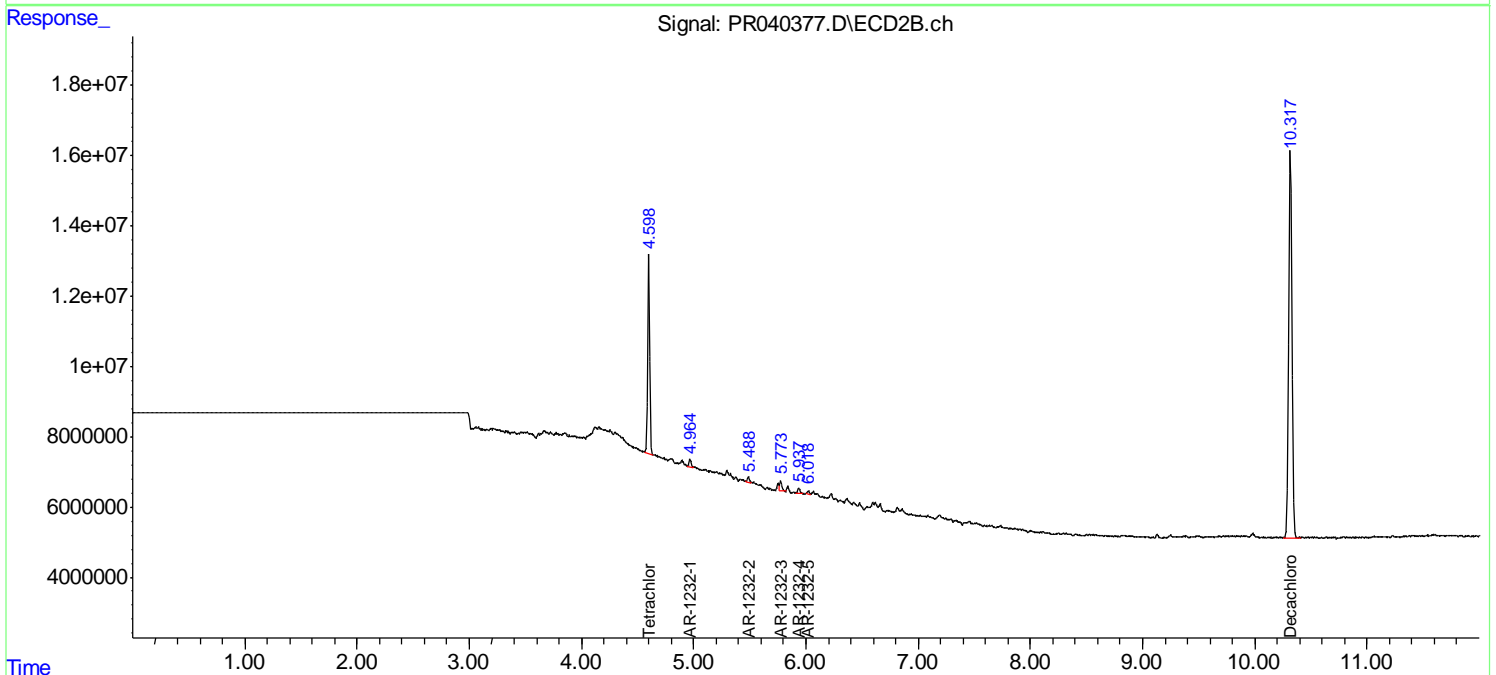
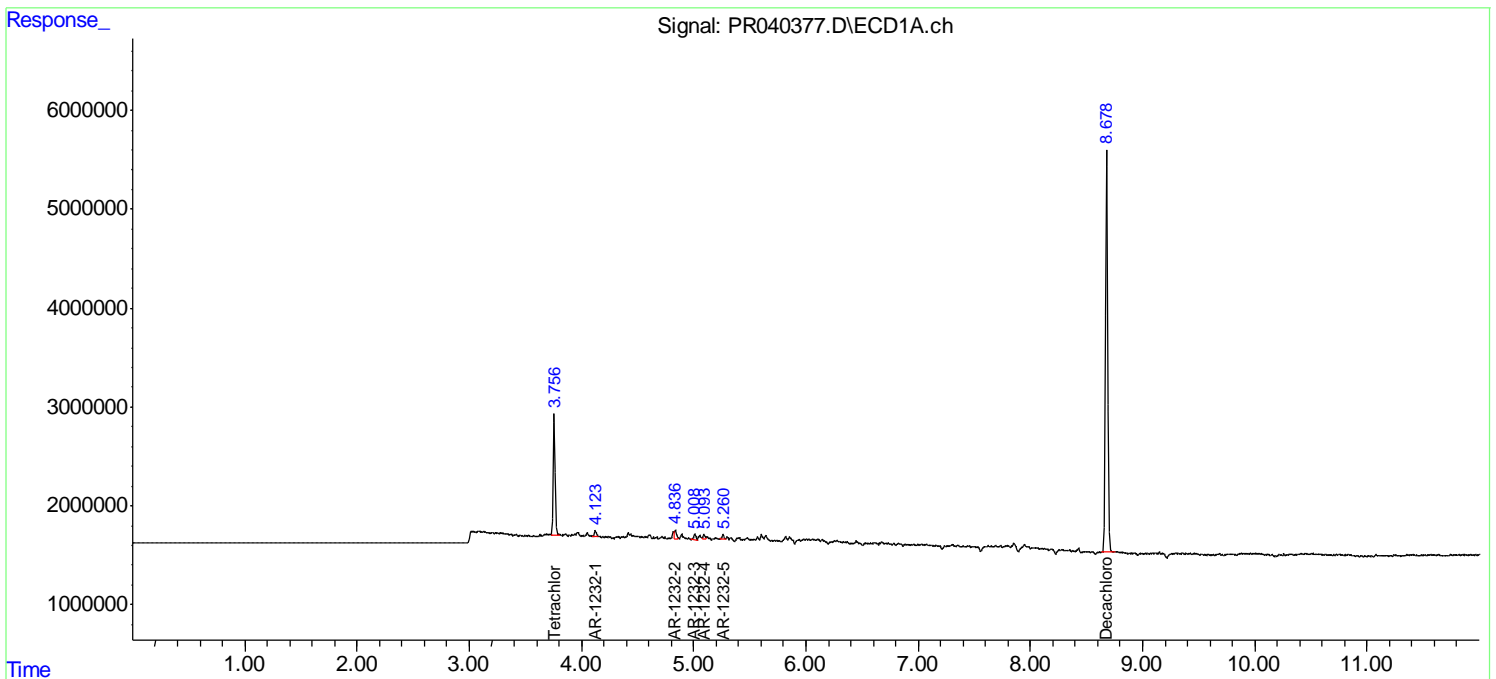
Data Path : Z:\pestpcbsrv\HPCHEM1\ECD\_R\Data\PR081519\  
 Data File : PR040377.D  
 Signal(s) : Signal #1: ECD1A.ch Signal #2: ECD2B.ch  
 Acq On : 15 Aug 2019 20:18  
 Operator : SM\AJ  
 Sample : K3591-07  
 Misc : AR1232 LOD WATER 25PPB  
 ALS Vial : 16 Sample Multiplier: 1

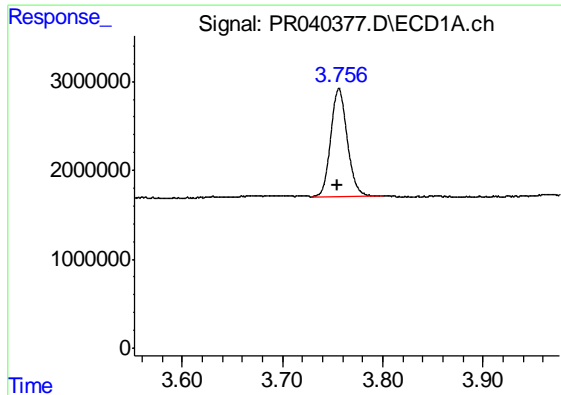
**Instrument :**  
 ECD\_R  
**Client Sampled :**  
 LOD-MDL-WATER-01-QT3-2019

**Manual Integrations**  
**APPROVED**  
 Ankita  
 8/16/2019 2:52:02 PM

Integration File signal 1: autoint1.e  
 Integration File signal 2: autoint2.e  
 Quant Time: Aug 16 05:15:05 2019  
 Quant Method : Z:\pestpcbsrv\HPCHEM1\ECD\_R\Method\PR081519.M  
 Quant Title : GC EXTRACTABLES  
 QLast Update : Thu Aug 15 15:16:04 2019  
 Response via : Initial Calibration  
 Integrator: ChemStation

Volume Inj. : 2 µl  
 Signal #1 Phase : ZB-MR1 Signal #2 Phase: ZB-MR2  
 Signal #1 Info : 30Mx0.32mmx 0.50µ Signal #2 Info : 30M x 0.32mm x 0.25µm





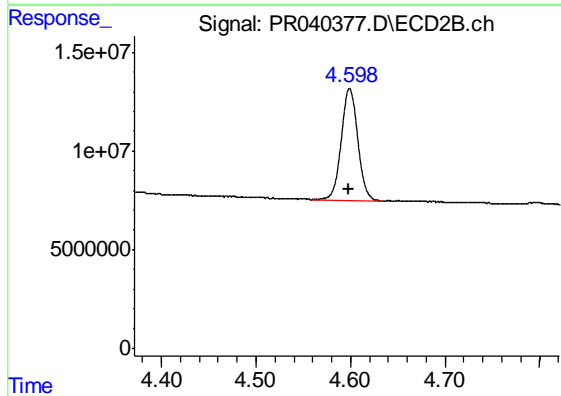
#1 Tetrachloro-m-xylene

R.T.: 3.756 min  
 Delta R.T.: 0.002 min  
 Response: 13956995  
 Conc: 11.36 ng/ml

Instrument :  
 ECD\_R  
 ClientSampled :  
 LOD-MDL-WATER-01-QT3-2019

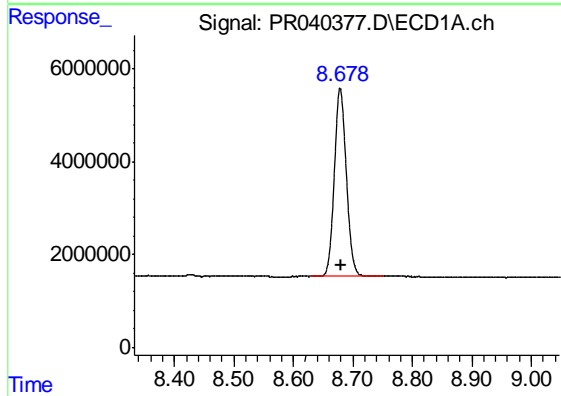
Manual Integrations  
 APPROVED

Ankita  
 8/16/2019 2:52:02 PM



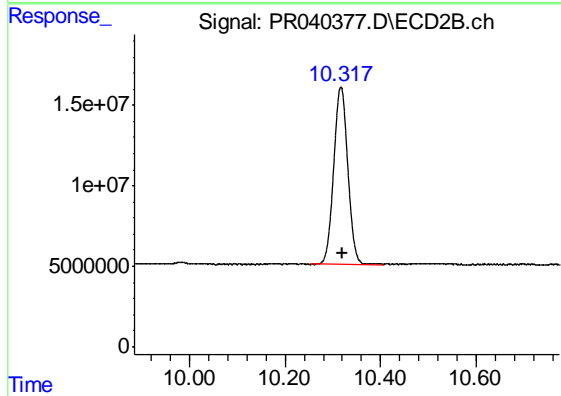
#1 Tetrachloro-m-xylene

R.T.: 4.599 min  
 Delta R.T.: 0.000 min  
 Response: 68638268  
 Conc: 11.13 ng/ml



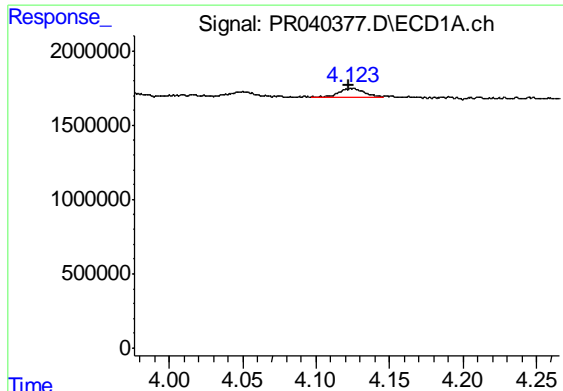
#2 Decachlorobiphenyl

R.T.: 8.679 min  
 Delta R.T.: -0.001 min  
 Response: 56836949  
 Conc: 19.73 ng/ml



#2 Decachlorobiphenyl

R.T.: 10.317 min  
 Delta R.T.: -0.002 min  
 Response: 225137541  
 Conc: 19.40 ng/ml

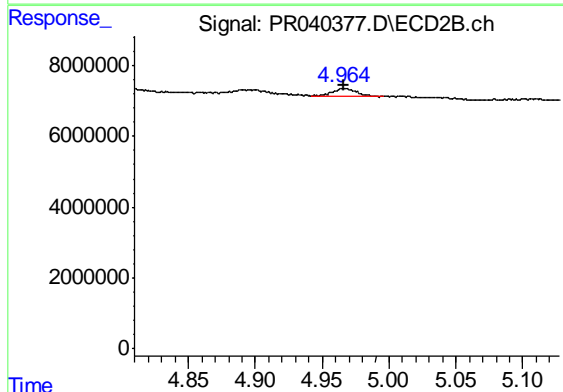


#11 AR-1232-1

R.T.: 4.126 min  
 Delta R.T.: 0.003 min  
 Response: 645163  
 Conc: 14.12 ng/ml

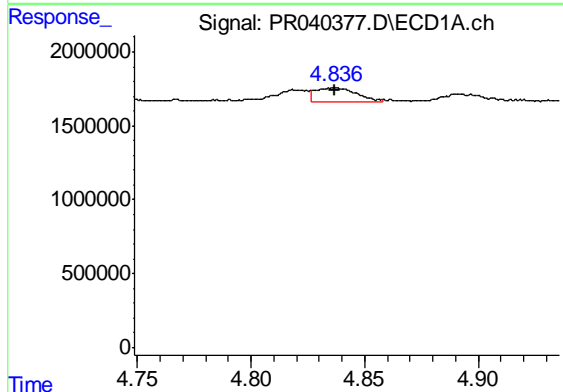
**Instrument :**  
 ECD\_R  
**ClientSampled :**  
 LOD-MDL-WATER-01-QT3-2019

**Manual Integrations**  
**APPROVED**  
 Ankita  
 8/16/2019 2:52:02 PM



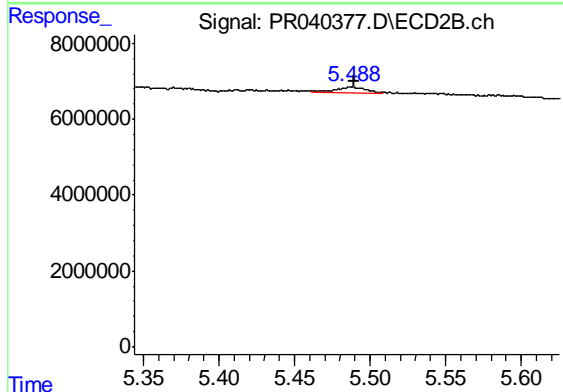
#11 AR-1232-1

R.T.: 4.964 min  
 Delta R.T.: -0.002 min  
 Response: 2869415  
 Conc: 13.80 ng/ml m



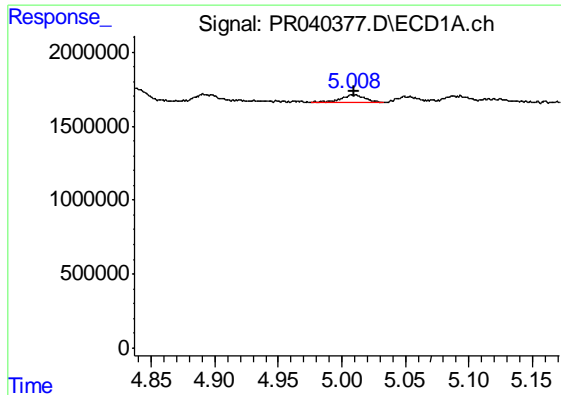
#12 AR-1232-2

R.T.: 4.836 min  
 Delta R.T.: 0.000 min  
 Response: 1171481  
 Conc: 18.90 ng/ml m



#12 AR-1232-2

R.T.: 5.488 min  
 Delta R.T.: -0.001 min  
 Response: 1749935  
 Conc: 15.39 ng/ml m

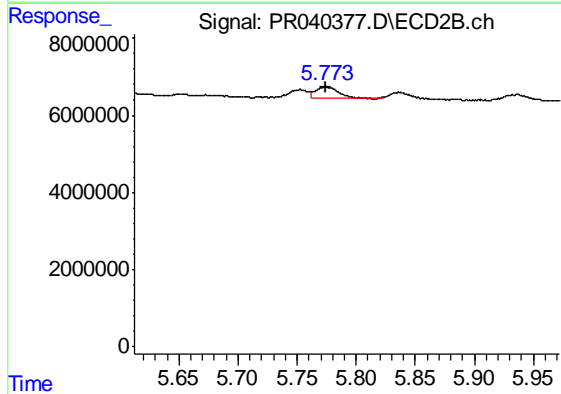


#13 AR-1232-3

R.T.: 5.008 min  
 Delta R.T.: -0.002 min  
 Response: 751378  
 Conc: 25.74 ng/ml

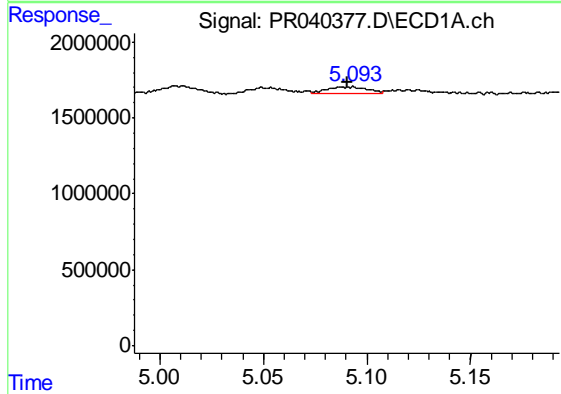
**Instrument :**  
 ECD\_R  
**ClientSampled :**  
 LOD-MDL-WATER-01-QT3-2019

**Manual Integrations**  
**APPROVED**  
 Ankita  
 8/16/2019 2:52:02 PM



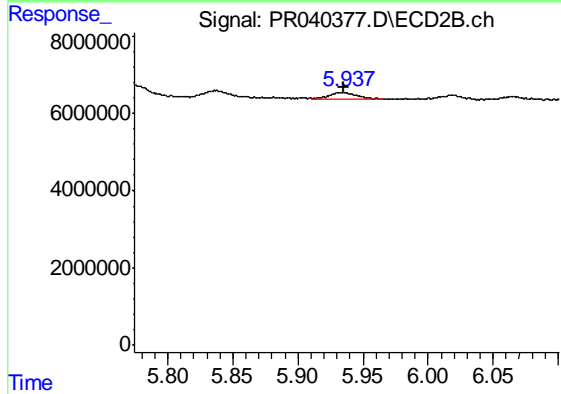
#13 AR-1232-3

R.T.: 5.773 min  
 Delta R.T.: -0.001 min  
 Response: 3933773  
 Conc: 15.43 ng/ml m



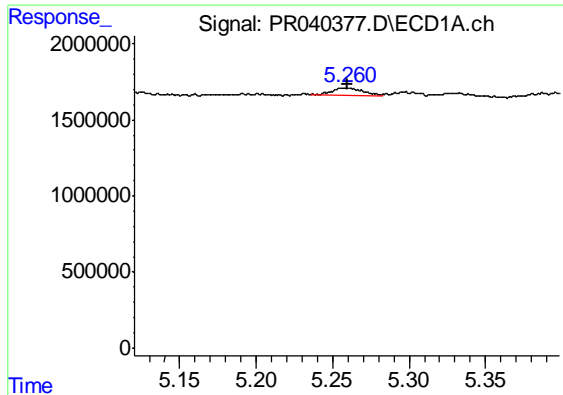
#14 AR-1232-4

R.T.: 5.093 min  
 Delta R.T.: 0.002 min  
 Response: 608560  
 Conc: 23.39 ng/ml m



#14 AR-1232-4

R.T.: 5.937 min  
 Delta R.T.: 0.002 min  
 Response: 2393820  
 Conc: 18.58 ng/ml m



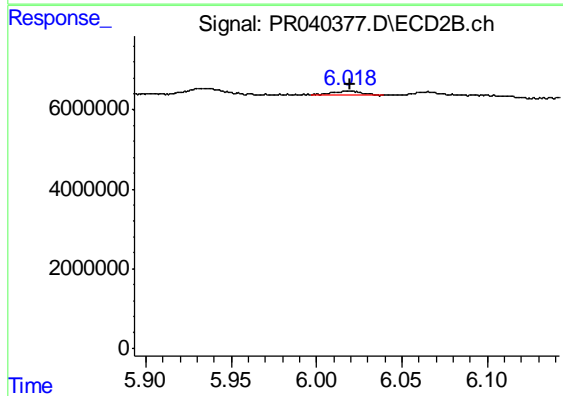
#15 AR-1232-5

R.T.: 5.260 min  
Delta R.T.: 0.000 min  
Response: 678807  
Conc: 22.46 ng/ml m

Instrument :  
ECD\_R  
ClientSampleId :  
LOD-MDL-WATER-01-QT3-2019

Manual Integrations  
APPROVED

Ankita  
8/16/2019 2:52:02 PM



#15 AR-1232-5

R.T.: 6.018 min  
Delta R.T.: -0.002 min  
Response: 1217781  
Conc: 13.39 ng/ml m