

Data Path : Z:\pestpcbsrv\HPCHEM1\ECD_R\Data\PR081519\
 Data File : PR040385.D
 Signal(s) : Signal #1: ECD1A.ch Signal #2: ECD2B.ch
 Acq On : 15 Aug 2019 22:57
 Operator : SM\AJ
 Sample : K3591-02
 Misc : AR1232 LOQ SOIL 50PPB
 ALS Vial : 24 Sample Multiplier: 1

Instrument :
 ECD_R
 ClientSampleId :
 LOQ-SOIL-02-QT3-2019

Manual Integrations
 APPROVED

Ankita
 8/16/2019 2:52:26 PM

Integration File signal 1: autoint1.e
 Integration File signal 2: autoint2.e
 Quant Time: Aug 16 05:19:55 2019
 Quant Method : Z:\pestpcbsrv\HPCHEM1\ECD_R\Method\PR081519.M
 Quant Title : GC EXTRACTABLES
 QLast Update : Thu Aug 15 15:16:04 2019
 Response via : Initial Calibration
 Integrator: ChemStation

Volume Inj. : 2 µl
 Signal #1 Phase : ZB-MR1 Signal #2 Phase: ZB-MR2
 Signal #1 Info : 30Mx0.32mmx 0.50µ Signal #2 Info : 30M x 0.32mm x 0.25µm

Compound	RT#1	RT#2	Resp#1	Resp#2	ng/ml	ng/ml

System Monitoring Compounds						
1) SA Tetrachlo...	3.756	4.599	16224587	81026268	13.204	13.137
2) SA Decachlor...	8.677	10.316	61532152	240.9E6	21.360	20.757
Target Compounds						
11) L3 AR-1232-1	4.123	4.967	1842100	7235889	40.306	34.803
12) L3 AR-1232-2	4.837	5.489	2217018	4036229	35.761	35.500m
13) L3 AR-1232-3	5.009	5.776	1227571	9653211	42.053	37.856
14) L3 AR-1232-4	5.090	5.935	1615749	4990178	62.091m	38.734m#
15) L3 AR-1232-5	5.259	6.016	1273477	3710882	42.137m	40.813m

(f)=RT Delta > 1/2 Window (#)=Amounts differ by > 25% (m)=manual int.

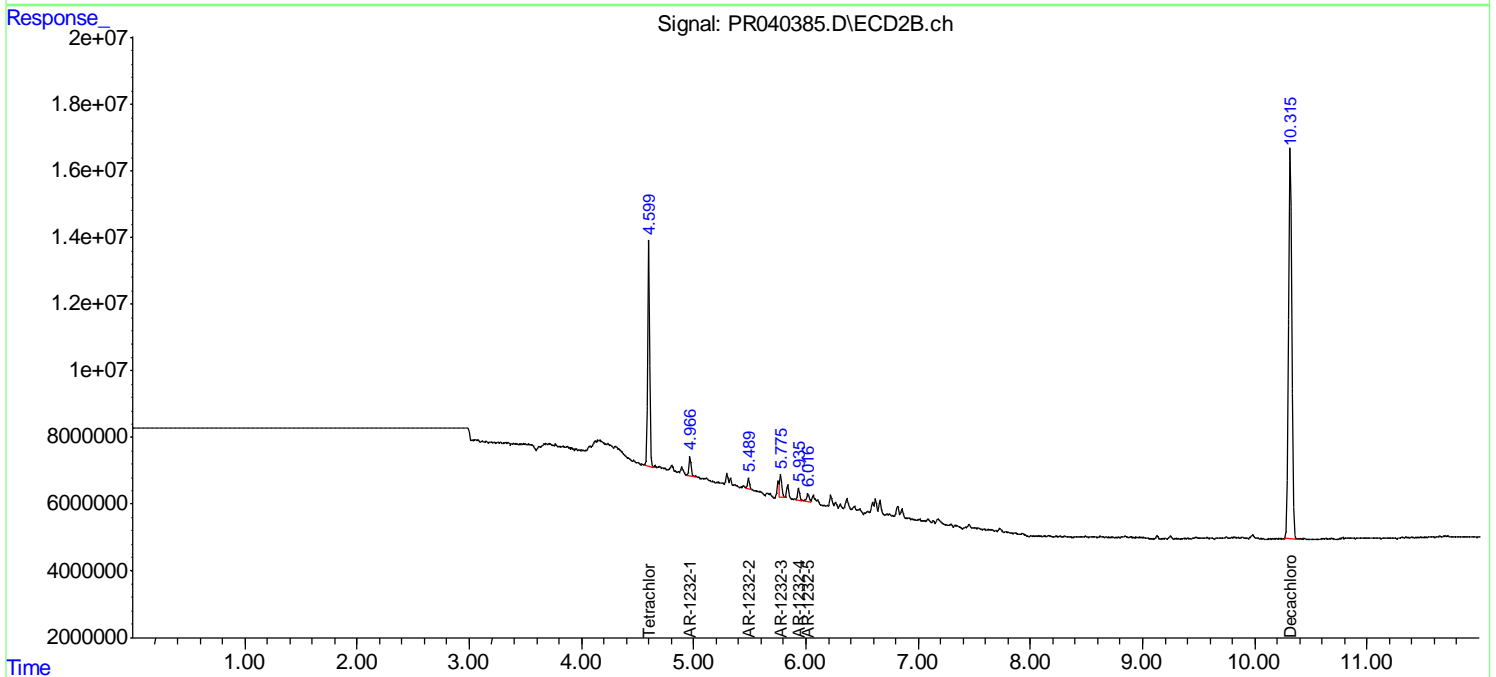
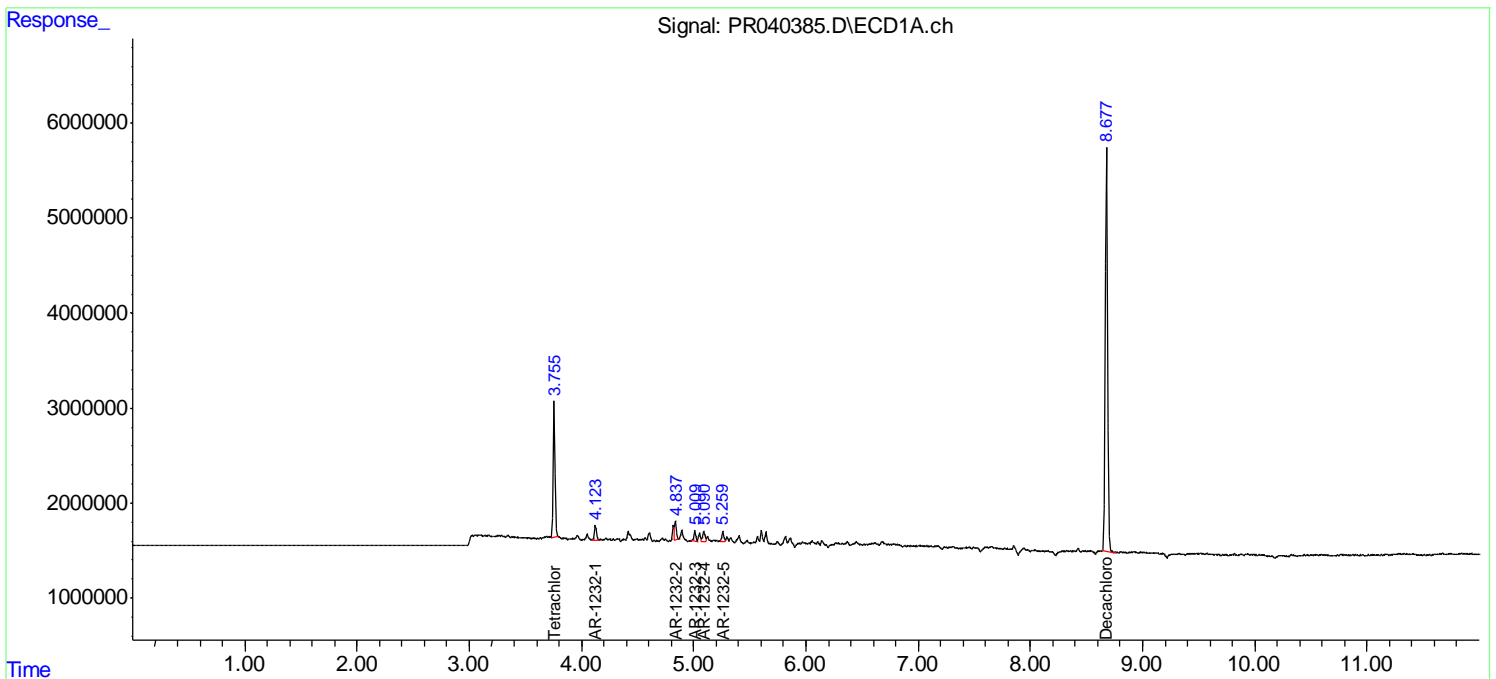
Data Path : Z:\pestpcbsrv\HPCHEM1\ECD_R\Data\PR081519\
 Data File : PR040385.D
 Signal(s) : Signal #1: ECD1A.ch Signal #2: ECD2B.ch
 Acq On : 15 Aug 2019 22:57
 Operator : SM\AJ
 Sample : K3591-02
 Misc : AR1232 LOQ SOIL 50PPB
 ALS Vial : 24 Sample Multiplier: 1

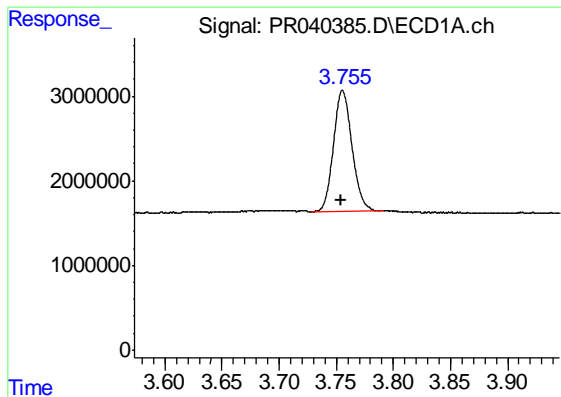
Instrument :
 ECD_R
Client Sampled :
 LOQ-SOIL-02-QT3-2019

Manual Integrations
APPROVED
 Ankita
 8/16/2019 2:52:26 PM

Integration File signal 1: autoint1.e
 Integration File signal 2: autoint2.e
 Quant Time: Aug 16 05:19:55 2019
 Quant Method : Z:\pestpcbsrv\HPCHEM1\ECD_R\Method\PR081519.M
 Quant Title : GC EXTRACTABLES
 QLast Update : Thu Aug 15 15:16:04 2019
 Response via : Initial Calibration
 Integrator: ChemStation

Volume Inj. : 2 µl
 Signal #1 Phase : ZB-MR1 Signal #2 Phase: ZB-MR2
 Signal #1 Info : 30Mx0.32mmx 0.50µ Signal #2 Info : 30M x 0.32mm x 0.25µm





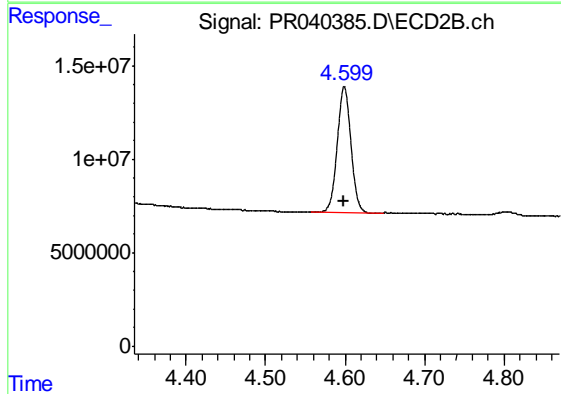
#1 Tetrachloro-m-xylene

R.T.: 3.756 min
 Delta R.T.: 0.002 min
 Response: 16224587
 Conc: 13.20 ng/ml

Instrument :
 ECD_R
 ClientSampleId :
 LOQ-SOIL-02-QT3-2019

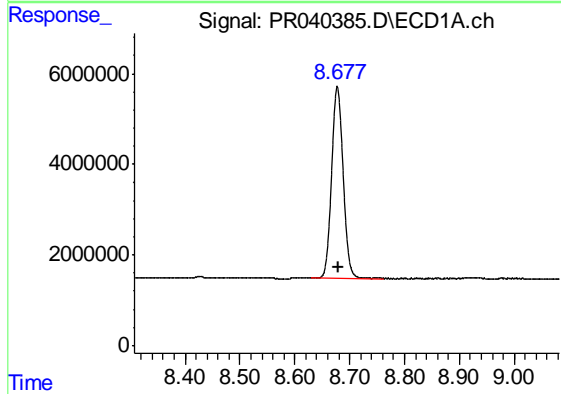
Manual Integrations
 APPROVED

Ankita
 8/16/2019 2:52:26 PM



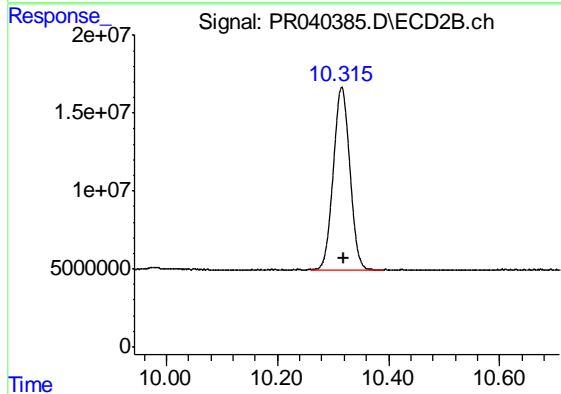
#1 Tetrachloro-m-xylene

R.T.: 4.599 min
 Delta R.T.: 0.000 min
 Response: 81026268
 Conc: 13.14 ng/ml



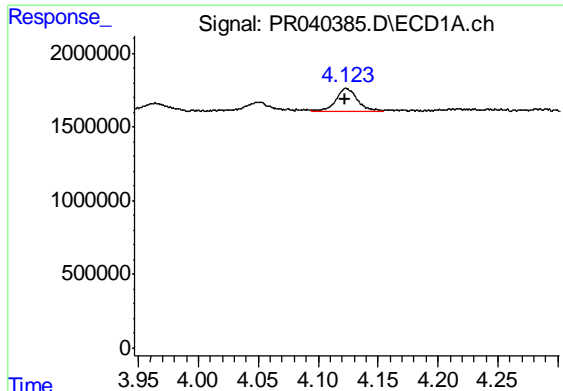
#2 Decachlorobiphenyl

R.T.: 8.677 min
 Delta R.T.: -0.003 min
 Response: 61532152
 Conc: 21.36 ng/ml



#2 Decachlorobiphenyl

R.T.: 10.316 min
 Delta R.T.: -0.003 min
 Response: 240919774
 Conc: 20.76 ng/ml

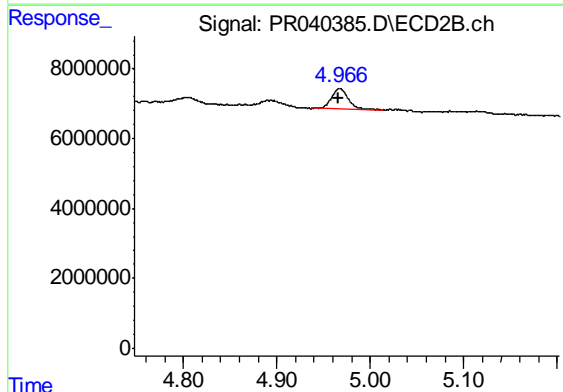


#11 AR-1232-1

R.T.: 4.123 min
 Delta R.T.: 0.000 min
 Response: 1842100
 Conc: 40.31 ng/ml

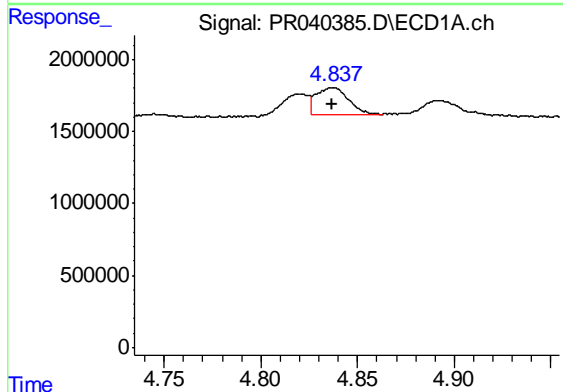
Instrument :
 ECD_R
ClientSampled :
 LOQ-SOIL-02-QT3-2019

Manual Integrations
APPROVED
 Ankita
 8/16/2019 2:52:26 PM



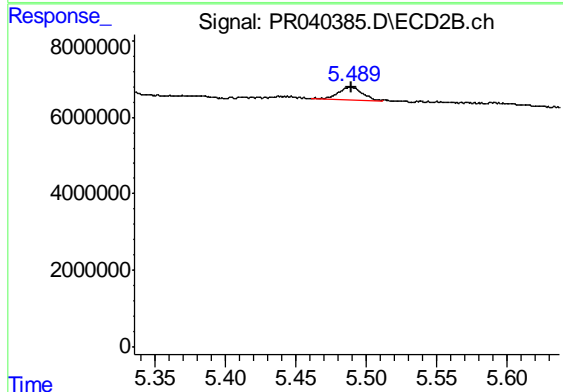
#11 AR-1232-1

R.T.: 4.967 min
 Delta R.T.: 0.000 min
 Response: 7235889
 Conc: 34.80 ng/ml



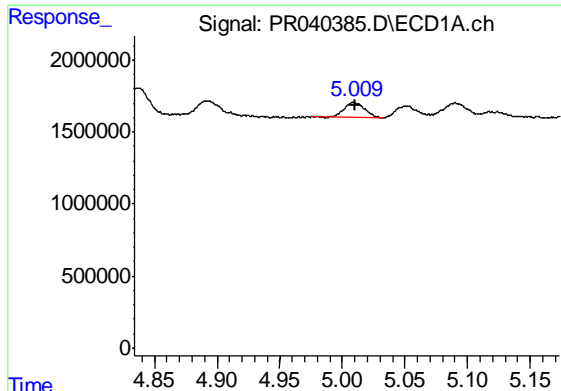
#12 AR-1232-2

R.T.: 4.837 min
 Delta R.T.: 0.000 min
 Response: 2217018
 Conc: 35.76 ng/ml



#12 AR-1232-2

R.T.: 5.489 min
 Delta R.T.: 0.000 min
 Response: 4036229
 Conc: 35.50 ng/ml m

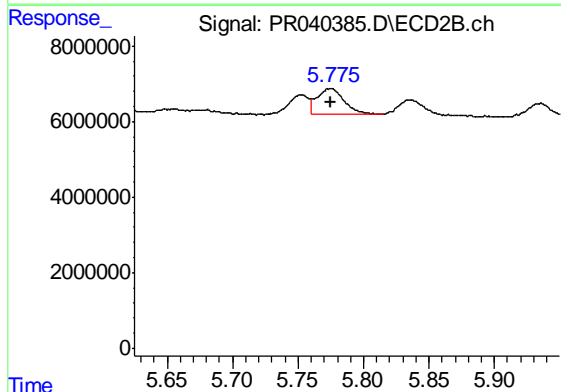


#13 AR-1232-3

R.T.: 5.009 min
 Delta R.T.: 0.000 min
 Response: 1227571
 Conc: 42.05 ng/ml

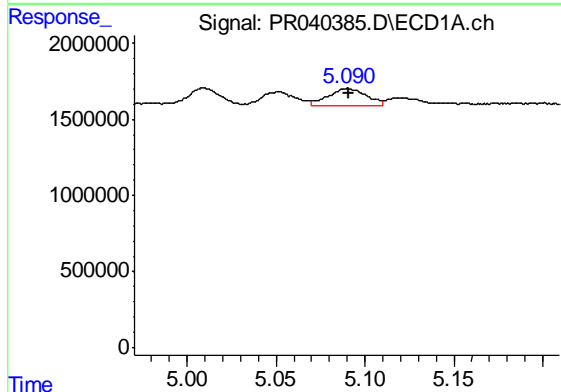
Instrument :
 ECD_R
 ClientSampled :
 LOQ-SOIL-02-QT3-2019

Manual Integrations
 APPROVED
 Ankita
 8/16/2019 2:52:26 PM



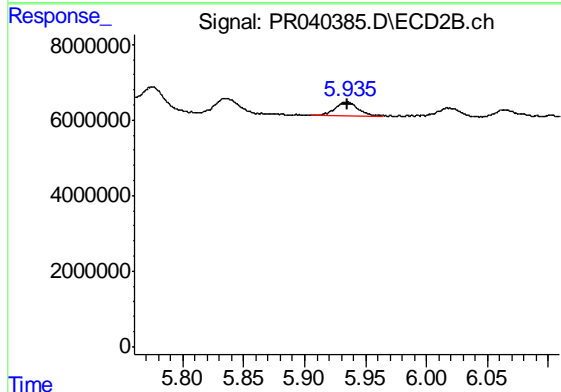
#13 AR-1232-3

R.T.: 5.776 min
 Delta R.T.: 0.000 min
 Response: 9653211
 Conc: 37.86 ng/ml



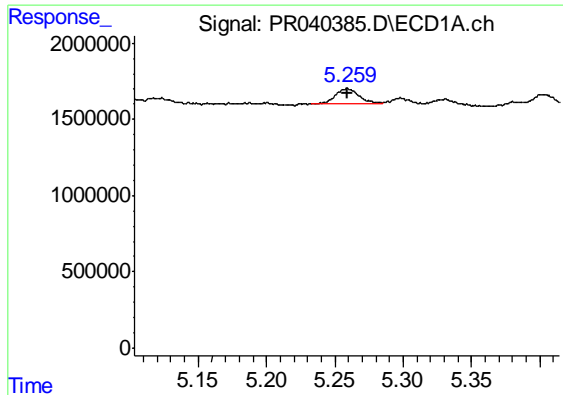
#14 AR-1232-4

R.T.: 5.090 min
 Delta R.T.: -0.001 min
 Response: 1615749
 Conc: 62.09 ng/ml m



#14 AR-1232-4

R.T.: 5.935 min
 Delta R.T.: 0.000 min
 Response: 4990178
 Conc: 38.73 ng/ml m



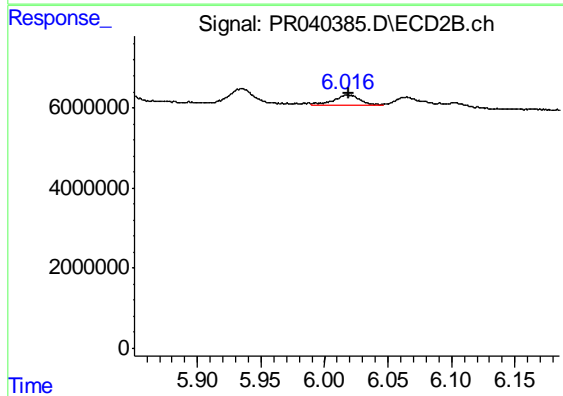
#15 AR-1232-5

R.T.: 5.259 min
Delta R.T.: 0.000 min
Response: 1273477
Conc: 42.14 ng/ml m

Instrument :
ECD_R
ClientSampleId :
LOQ-SOIL-02-QT3-2019

Manual Integrations
APPROVED

Ankita
8/16/2019 2:52:26 PM



#15 AR-1232-5

R.T.: 6.016 min
Delta R.T.: -0.003 min
Response: 3710882
Conc: 40.81 ng/ml m