

Data Path : Z:\pestpcbsrv\HPCHEM1\ECD\_R\Data\PR081724\  
 Data File : PR068355.D  
 Signal(s) : Signal #1: ECD1A.ch Signal #2: ECD2B.ch  
 Acq On : 16 Aug 2024 17:54  
 Operator : AJ\MA  
 Sample : P3603-01  
 Misc :  
 ALS Vial : 14 Sample Multiplier: 1

Instrument :  
 ECD\_R  
 ClientSampleId :  
 E0CL1

Integration File signal 1: autoint1.e  
 Integration File signal 2: autoint2.e  
 Quant Time: Aug 17 01:22:51 2024  
 Quant Method : Z:\pestpcbsrv\HPCHEM1\ECD\_R\Method\PR081424CLP.M  
 Quant Title : GC EXTRACTABLES  
 QLast Update : Wed Aug 14 10:38:14 2024  
 Response via : Initial Calibration  
 Integrator: ChemStation

Volume Inj. : 1 µl  
 Signal #1 Phase : ZB MR1 Signal #2 Phase: ZB MR2  
 Signal #1 Info : 30Mx0.32mmx 0.5µm Signal #2 Info : 30M x 0.32mm x 0.25µm

Compound	RT#1	RT#2	Resp#1	Resp#2	ng/ml	ng/ml
System Monitoring Compounds						
1) SA Tetrachlo...	3.675	3.007	39677037	101.4E6	16.666	18.649
2) SA Decachlor...	9.582	8.321	61374272	70018564	24.475	24.846
Target Compounds						
3) L1 AR-1016-1	4.920	4.085f	639125	486690	12.149	2.712 #
4) L1 AR-1016-2	4.920	0.000	639125	0	6.498	N.D. #
5) L1 AR-1016-3	4.982	0.000	639443	0	9.946	N.D. #
6) L1 AR-1016-4	5.139f	0.000	291037	0	5.462	N.D. #
8) L2 AR-1221-1	3.885	3.290f	15997189	8458333	671.670	134.848 #
9) L2 AR-1221-2	3.987	3.312	570164	3632464	31.411	82.431 #
10) L2 AR-1221-3	4.086	3.463f	354524	1904552	5.831	13.302 #
11) L3 AR-1232-1	4.086	3.463f	354524	1904552	7.507	16.820 #
12) L3 AR-1232-2	4.638	0.000	623391	0	26.952	N.D. #
13) L3 AR-1232-3	4.920	0.000	639125	0	13.998	N.D. #
14) L3 AR-1232-4	5.139f	0.000	291037	0	12.579	N.D. #
15) L3 AR-1232-5	5.139f	0.000	291037	0	26.862	N.D. #
16) L4 AR-1242-1	4.920	4.085f	639125	486690	14.419	3.188 #
17) L4 AR-1242-2	4.920	0.000	639125	0	7.707	N.D. #
18) L4 AR-1242-3	4.982	0.000	639443	0	11.843	N.D. #
19) L4 AR-1242-4	5.139f	0.000	291037	0	6.385	N.D. #
20) L4 AR-1242-5	5.848	0.000	1219067	0	25.748	N.D. #
21) L5 AR-1248-1	4.920	4.085f	639125	486690	19.065	4.335 #
22) L5 AR-1248-2	5.139f	0.000	291037	0	7.159	N.D. #
24) L5 AR-1248-4	5.848	0.000	1219067	0	17.888	N.D. #
25) L5 AR-1248-5	5.848	0.000	1219067	0	15.517	N.D. #
26) L6 AR-1254-1	5.819	0.000	338192	0	5.631	N.D. #
27) L6 AR-1254-2	6.051	0.000	1348519	0	13.518	N.D. #
28) L6 AR-1254-3	6.432	5.552	258899	574209	2.004	1.326 #
29) L6 AR-1254-4	6.739	5.852	302265	202626	2.706	0.762 #
30) L6 AR-1254-5	7.182	6.264	3723408	1595838	29.663	4.053 #
31) L7 AR-1260-1	6.642	0.000	282721	0	3.520	N.D. #
32) L7 AR-1260-2	6.847f	5.852f	422454	202626	2.901	0.549 #
33) L7 AR-1260-3	7.291	6.086	219860	1192276	1.334	3.493 #
34) L7 AR-1260-4	7.518	0.000	2211133	0	16.358	N.D. #
35) L7 AR-1260-5	7.861	6.855	607760	643564	1.297	0.956 #
36) L8 AR-1262-1	7.291	6.264f	219860	1595838	0.940	3.882 #
37) L8 AR-1262-2	7.861	6.855	607760	643564	1.173	0.883
38) L8 AR-1262-3	8.182	7.166	234015	852303	0.659	2.906 #
39) L8 AR-1262-4	8.254	7.189f	369788	504493	1.237	0.929
40) L8 AR-1262-5	8.918f	7.791	328591	159722	1.526	0.637 #
41) L9 AR-1268-1	8.182	7.166	234015	852303	0.304	0.947 #
42) L9 AR-1268-2	8.254	7.189f	369788	504493	0.535	0.612
43) L9 AR-1268-3	8.458	7.463	1670188	795511	2.566	1.142 #

Data Path : Z:\pestpcbsrv\HPCHEM1\ECD\_R\Data\PR081724\  
 Data File : PR068355.D  
 Signal(s) : Signal #1: ECD1A.ch Signal #2: ECD2B.ch  
 Acq On : 16 Aug 2024 17:54  
 Operator : AJ\MA  
 Sample : P3603-01  
 Misc :  
 ALS Vial : 14 Sample Multiplier: 1

**Instrument :**  
 ECD\_R  
**ClientSampleId :**  
 E0CL1

Integration File signal 1: autoint1.e  
 Integration File signal 2: autoint2.e  
 Quant Time: Aug 17 01:22:51 2024  
 Quant Method : Z:\pestpcbsrv\HPCHEM1\ECD\_R\Method\PR081424CLP.M  
 Quant Title : GC EXTRACTABLES  
 QLast Update : Wed Aug 14 10:38:14 2024  
 Response via : Initial Calibration  
 Integrator: ChemStation

Volume Inj. : 1 µl  
 Signal #1 Phase : ZB MR1 Signal #2 Phase: ZB MR2  
 Signal #1 Info : 30Mx0.32mmx 0.5µm Signal #2 Info : 30M x 0.32mm x 0.25µm

	Compound	RT#1	RT#2	Resp#1	Resp#2	ng/ml	ng/ml
44)	L9 AR-1268-4	8.918	7.791	328591	159722	1.294	0.532 #
45)	L9 AR-1268-5	9.266	8.066	1609247	486136	0.861	0.233 #

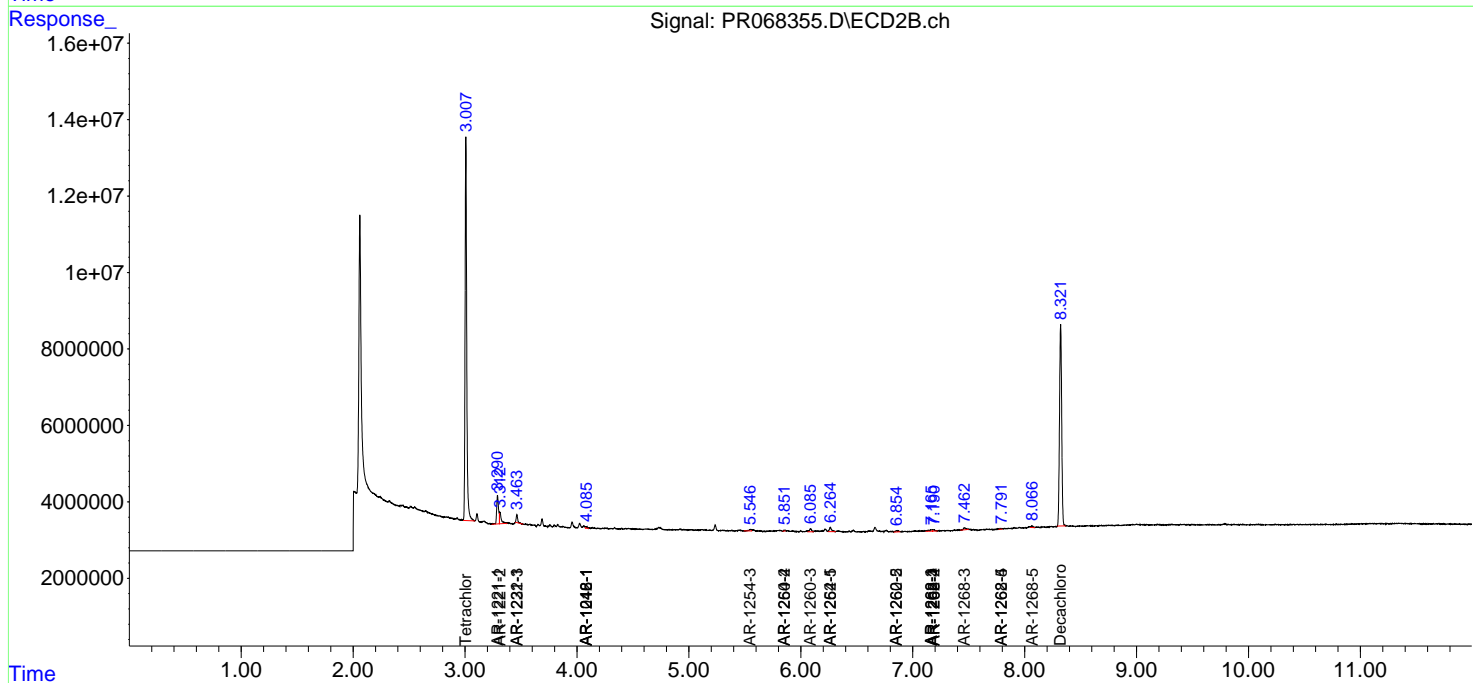
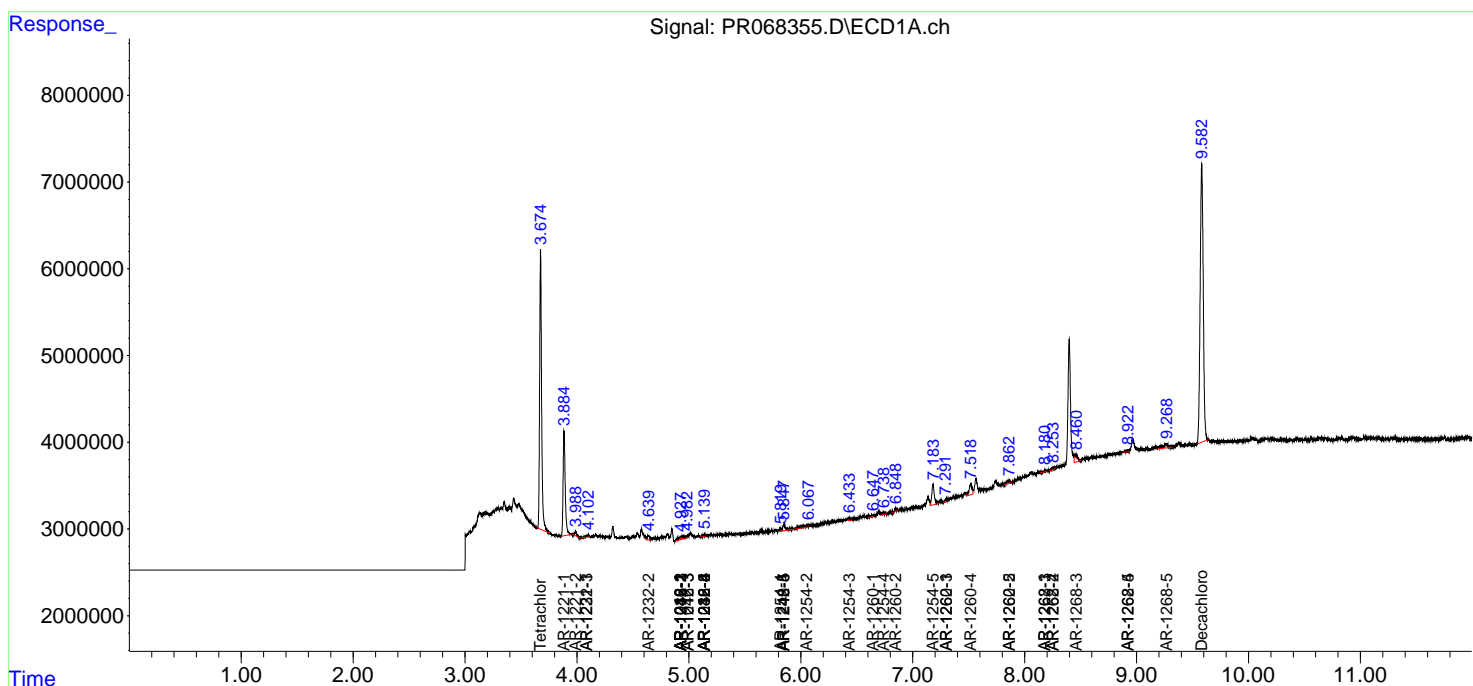
(f)=RT Delta > 1/2 Window (#)=Amounts differ by > 25% (m)=manual int.

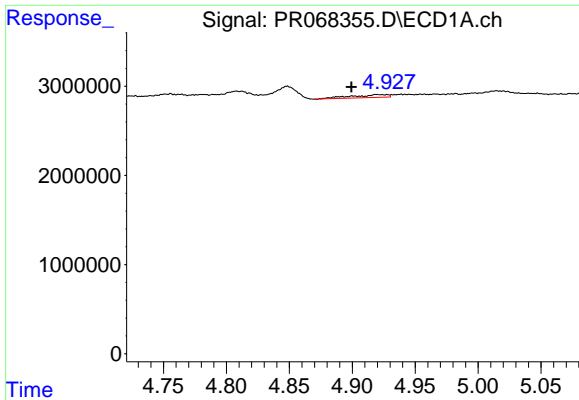
Data Path : Z:\pestpcbsrv\HPCHEM1\ECD\_R\Data\PR081724\  
 Data File : PR068355.D  
 Signal(s) : Signal #1: ECD1A.ch Signal #2: ECD2B.ch  
 Acq On : 16 Aug 2024 17:54  
 Operator : AJ\MA  
 Sample : P3603-01  
 Misc :  
 ALS Vial : 14 Sample Multiplier: 1

Instrument :  
 ECD\_R  
 ClientSampleId :  
 E0CL1

Integration File signal 1: autoint1.e  
 Integration File signal 2: autoint2.e  
 Quant Time: Aug 17 01:22:51 2024  
 Quant Method : Z:\pestpcbsrv\HPCHEM1\ECD\_R\Method\PR081424CLP.M  
 Quant Title : GC EXTRACTABLES  
 QLast Update : Wed Aug 14 10:38:14 2024  
 Response via : Initial Calibration  
 Integrator: ChemStation

Volume Inj. : 1 µl  
 Signal #1 Phase : ZB MR1 Signal #2 Phase: ZB MR2  
 Signal #1 Info : 30Mx0.32mmx 0.5µm Signal #2 Info : 30M x 0.32mm x 0.25µm

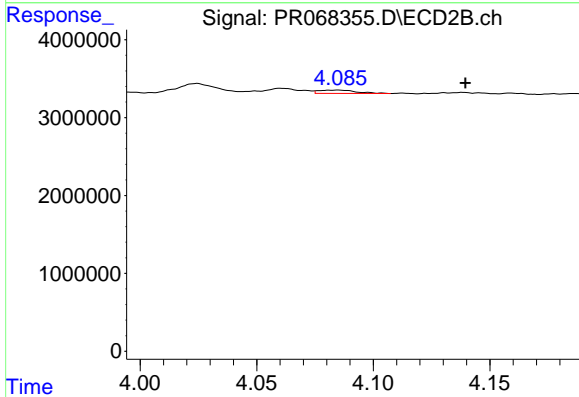




#3 AR-1016-1

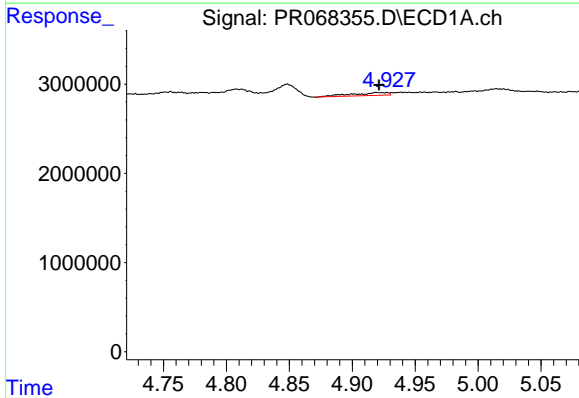
R.T.: 4.920 min  
 Delta R.T.: 0.020 min  
 Response: 639125  
 Conc: 12.15 ng/ml

Instrument :  
 ECD\_R  
 ClientSampleId :  
 E0CL1



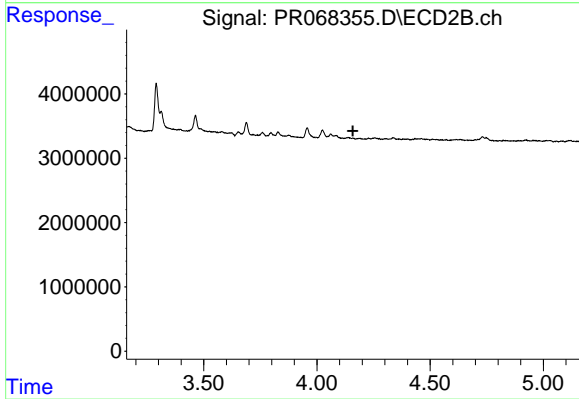
#3 AR-1016-1

R.T.: 4.085 min  
 Delta R.T.: -0.055 min  
 Response: 486690  
 Conc: 2.71 ng/ml



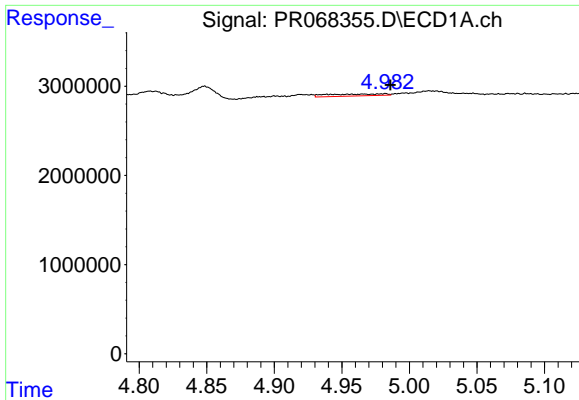
#4 AR-1016-2

R.T.: 4.920 min  
 Delta R.T.: -0.002 min  
 Response: 639125  
 Conc: 6.50 ng/ml



#4 AR-1016-2

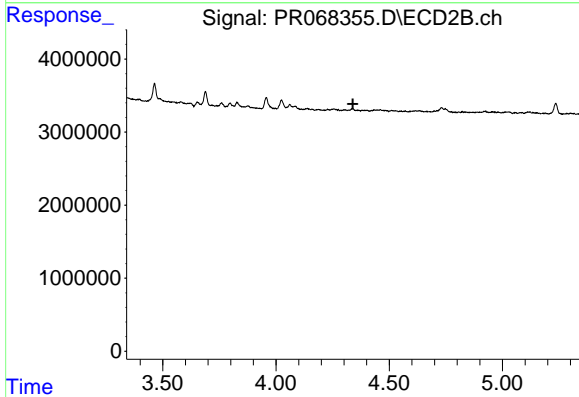
R.T.: 0.000 min  
 Exp R.T. : 4.159 min  
 Response: 0  
 Conc: N.D.



#5 AR-1016-3

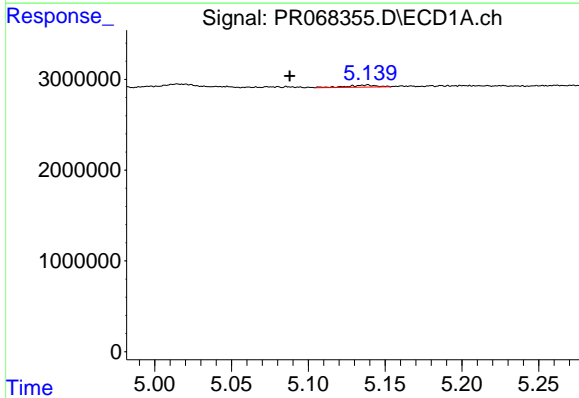
R.T.: 4.982 min  
 Delta R.T.: -0.004 min  
 Response: 639443  
 Conc: 9.95 ng/ml

Instrument :  
 ECD\_R  
 ClientSampleId :  
 E0CL1



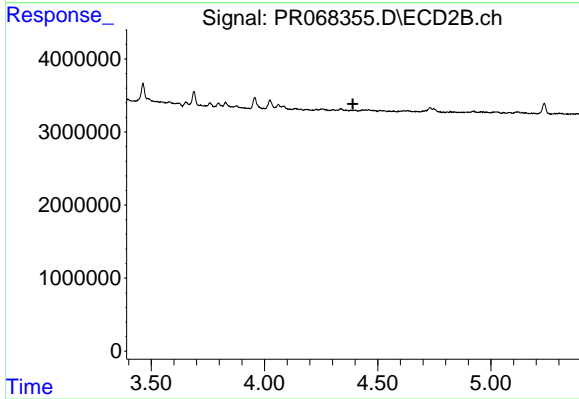
#5 AR-1016-3

R.T.: 0.000 min  
 Exp R.T. : 4.339 min  
 Response: 0  
 Conc: N.D.



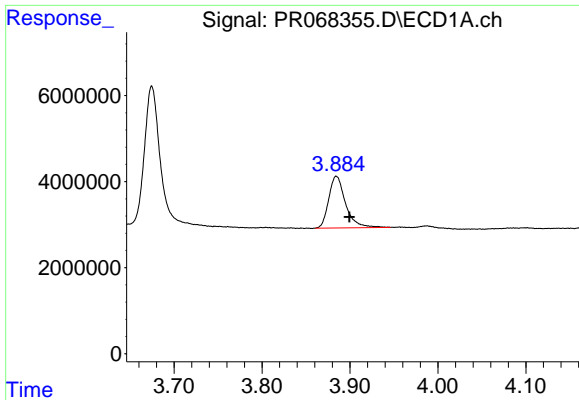
#6 AR-1016-4

R.T.: 5.139 min  
 Delta R.T.: 0.051 min  
 Response: 291037  
 Conc: 5.46 ng/ml



#6 AR-1016-4

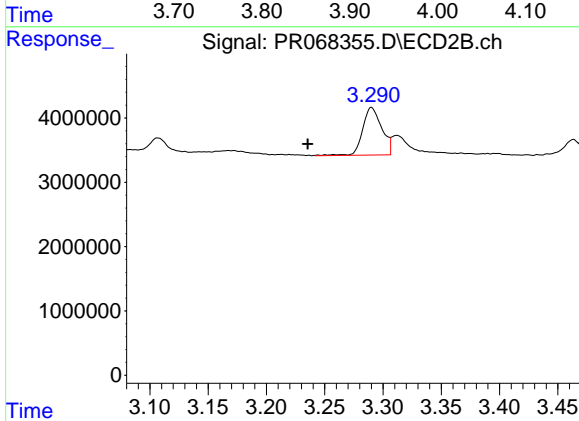
R.T.: 0.000 min  
 Exp R.T. : 4.390 min  
 Response: 0  
 Conc: N.D.



#8 AR-1221-1

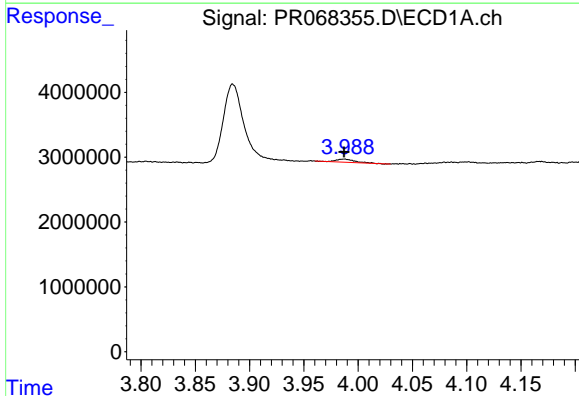
R.T.: 3.885 min  
 Delta R.T.: -0.015 min  
 Response: 15997189  
 Conc: 671.67 ng/ml

Instrument :  
 ECD\_R  
 ClientSampleId :  
 E0CL1



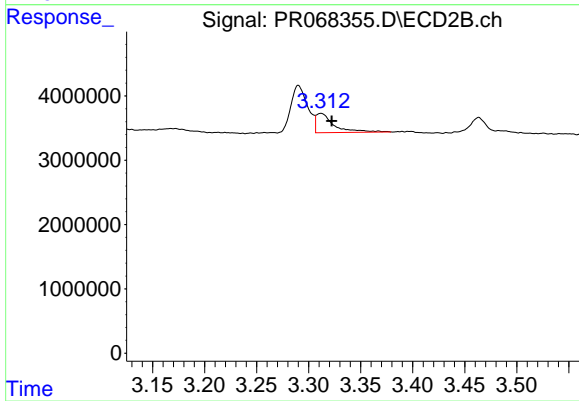
#8 AR-1221-1

R.T.: 3.290 min  
 Delta R.T.: 0.055 min  
 Response: 8458333  
 Conc: 134.85 ng/ml



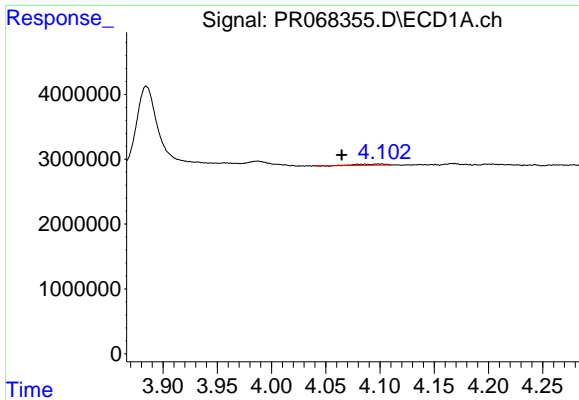
#9 AR-1221-2

R.T.: 3.987 min  
 Delta R.T.: 0.000 min  
 Response: 570164  
 Conc: 31.41 ng/ml



#9 AR-1221-2

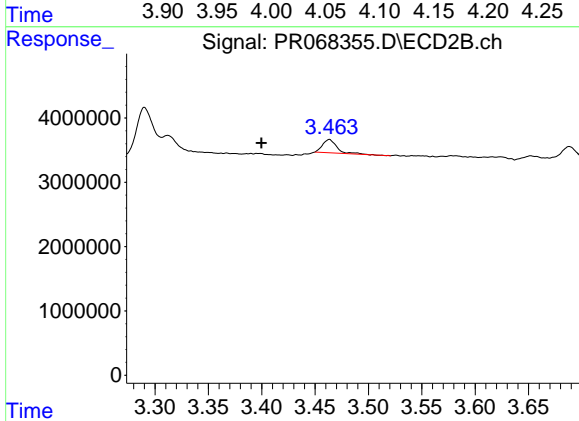
R.T.: 3.312 min  
 Delta R.T.: -0.010 min  
 Response: 3632464  
 Conc: 82.43 ng/ml



#10 AR-1221-3

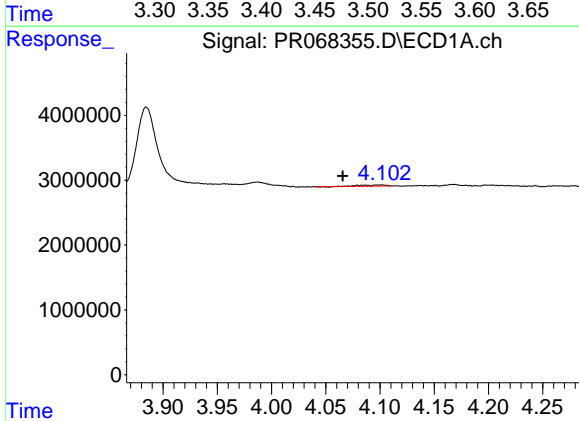
R.T.: 4.086 min  
 Delta R.T.: 0.022 min  
 Response: 354524  
 Conc: 5.83 ng/ml

Instrument :  
 ECD\_R  
 ClientSampleId :  
 E0CL1



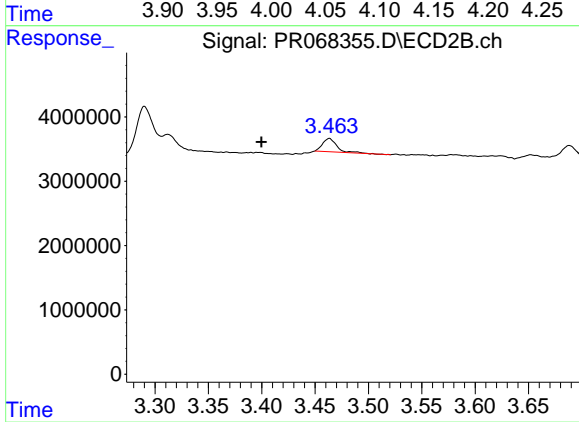
#10 AR-1221-3

R.T.: 3.463 min  
 Delta R.T.: 0.064 min  
 Response: 1904552  
 Conc: 13.30 ng/ml



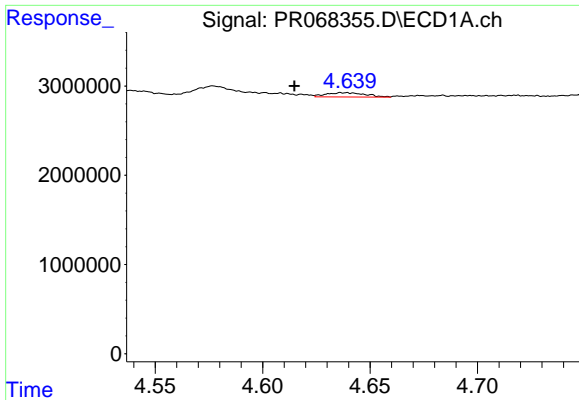
#11 AR-1232-1

R.T.: 4.086 min  
 Delta R.T.: 0.021 min  
 Response: 354524  
 Conc: 7.51 ng/ml



#11 AR-1232-1

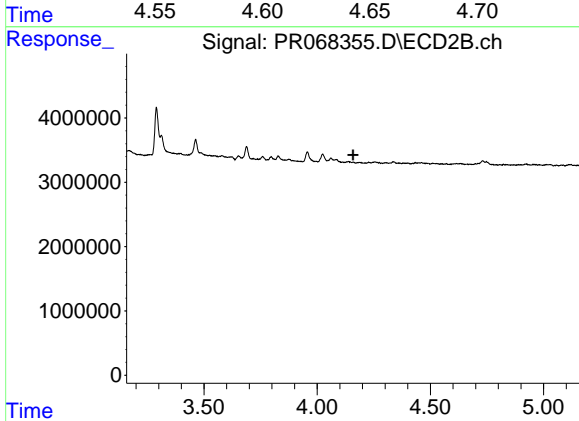
R.T.: 3.463 min  
 Delta R.T.: 0.064 min  
 Response: 1904552  
 Conc: 16.82 ng/ml



#12 AR-1232-2

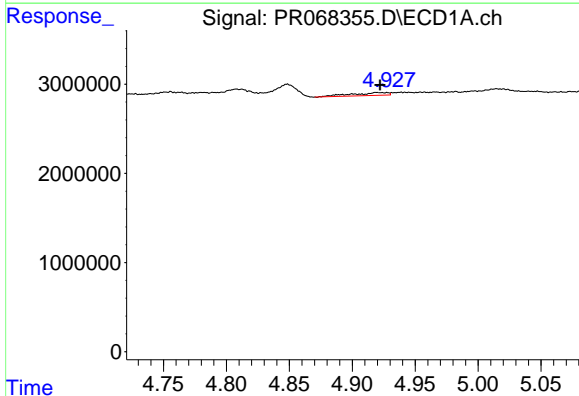
R.T.: 4.638 min  
 Delta R.T.: 0.023 min  
 Response: 623391  
 Conc: 26.95 ng/ml

Instrument :  
 ECD\_R  
 ClientSampleId :  
 E0CL1



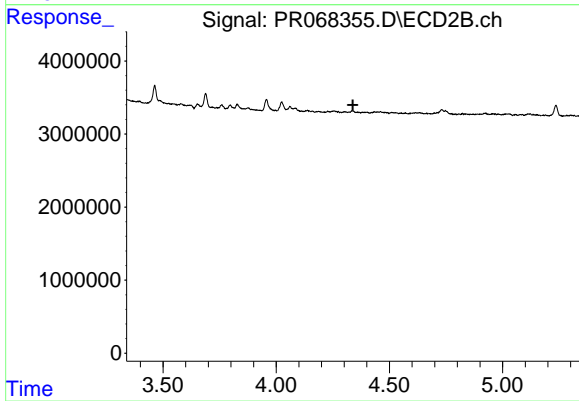
#12 AR-1232-2

R.T.: 0.000 min  
 Exp R.T. : 4.158 min  
 Response: 0  
 Conc: N.D.



#13 AR-1232-3

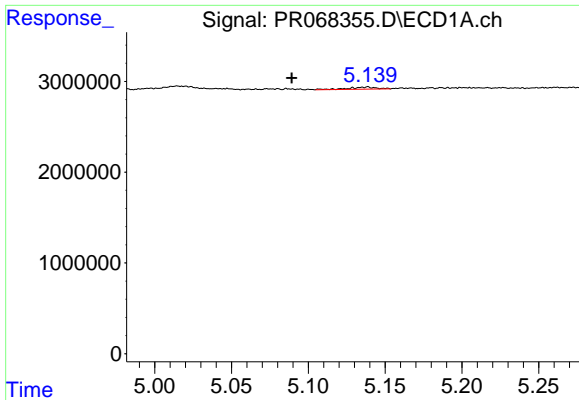
R.T.: 4.920 min  
 Delta R.T.: -0.003 min  
 Response: 639125  
 Conc: 14.00 ng/ml



#13 AR-1232-3

R.T.: 0.000 min  
 Exp R.T. : 4.339 min  
 Response: 0  
 Conc: N.D.

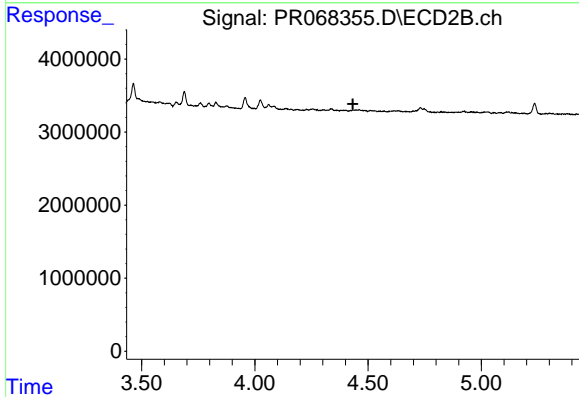




#14 AR-1232-4

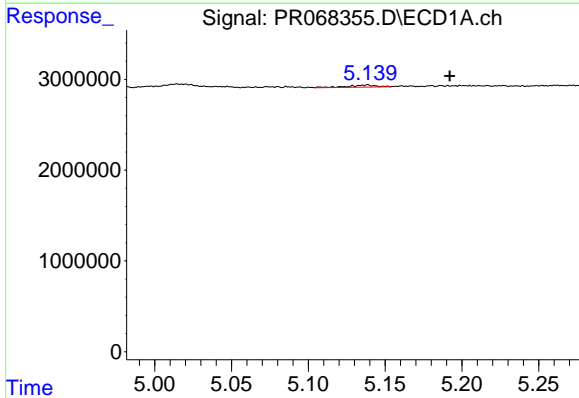
R.T.: 5.139 min  
 Delta R.T.: 0.049 min  
 Response: 291037  
 Conc: 12.58 ng/ml

Instrument :  
 ECD\_R  
 ClientSampleId :  
 E0CL1



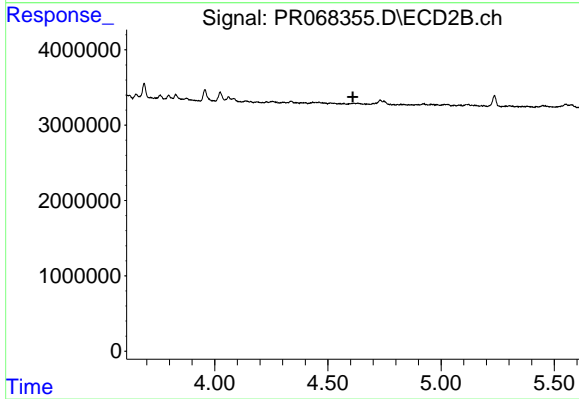
#14 AR-1232-4

R.T.: 0.000 min  
 Exp R.T. : 4.433 min  
 Response: 0  
 Conc: N.D.



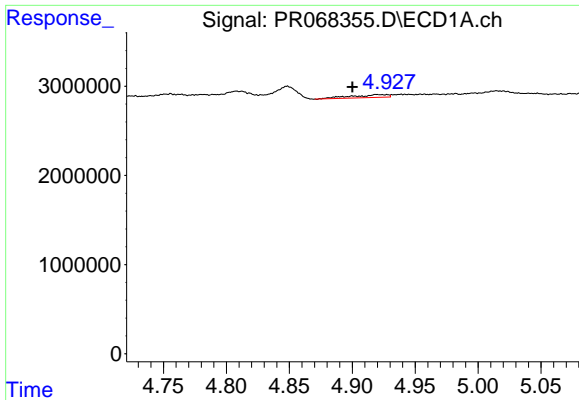
#15 AR-1232-5

R.T.: 5.139 min  
 Delta R.T.: -0.054 min  
 Response: 291037  
 Conc: 26.86 ng/ml



#15 AR-1232-5

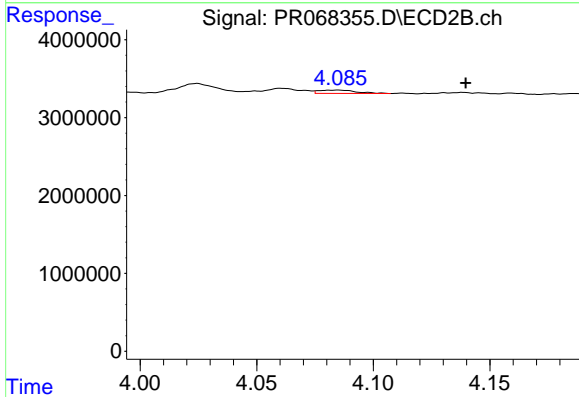
R.T.: 0.000 min  
 Exp R.T. : 4.611 min  
 Response: 0  
 Conc: N.D.



#16 AR-1242-1

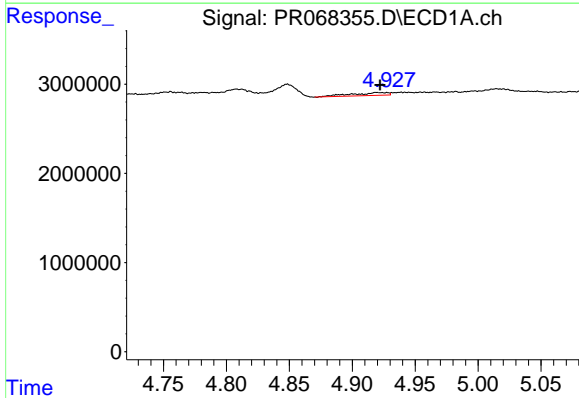
R.T.: 4.920 min  
 Delta R.T.: 0.019 min  
 Response: 639125  
 Conc: 14.42 ng/ml

Instrument :  
 ECD\_R  
 ClientSampleId :  
 E0CL1



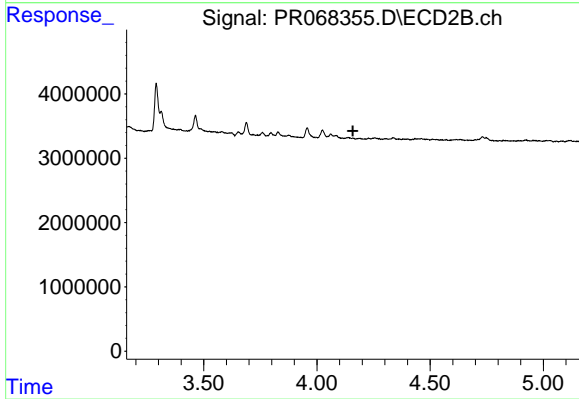
#16 AR-1242-1

R.T.: 4.085 min  
 Delta R.T.: -0.055 min  
 Response: 486690  
 Conc: 3.19 ng/ml



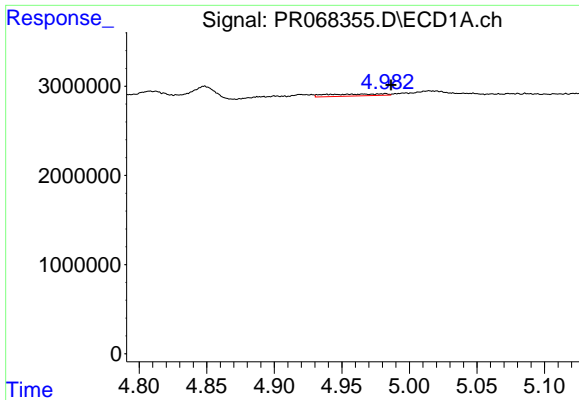
#17 AR-1242-2

R.T.: 4.920 min  
 Delta R.T.: -0.003 min  
 Response: 639125  
 Conc: 7.71 ng/ml



#17 AR-1242-2

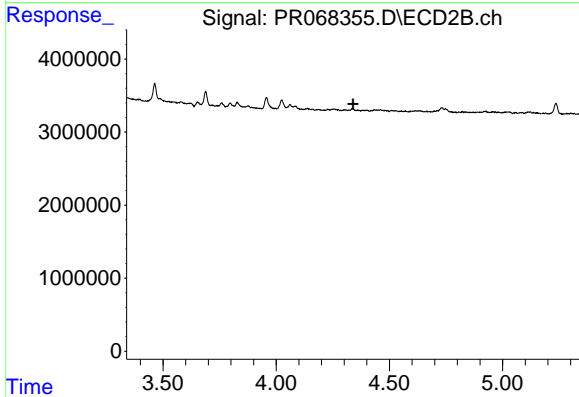
R.T.: 0.000 min  
 Exp R.T. : 4.158 min  
 Response: 0  
 Conc: N.D.



#18 AR-1242-3

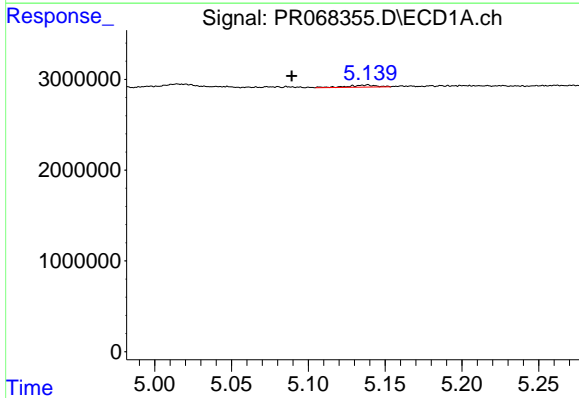
R.T.: 4.982 min  
 Delta R.T.: -0.004 min  
 Response: 639443  
 Conc: 11.84 ng/ml

Instrument :  
 ECD\_R  
 ClientSampleId :  
 E0CL1



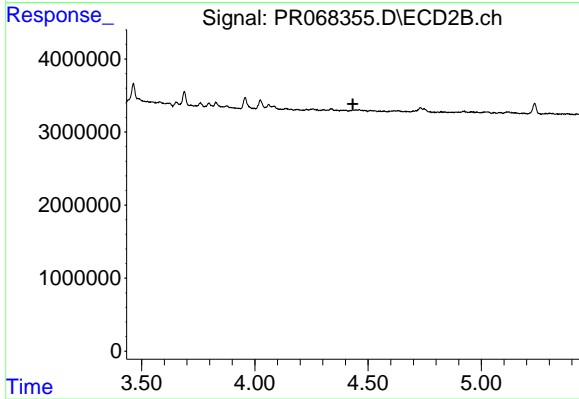
#18 AR-1242-3

R.T.: 0.000 min  
 Exp R.T. : 4.339 min  
 Response: 0  
 Conc: N.D.



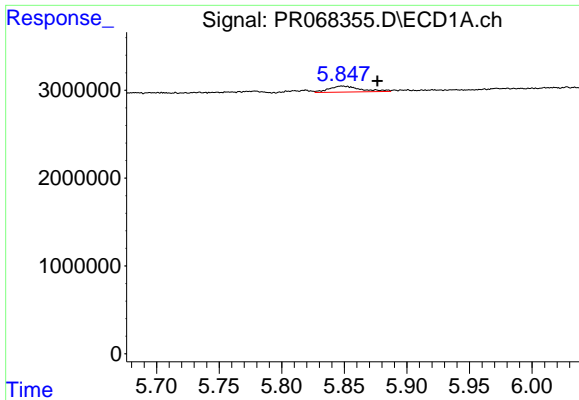
#19 AR-1242-4

R.T.: 5.139 min  
 Delta R.T.: 0.049 min  
 Response: 291037  
 Conc: 6.38 ng/ml



#19 AR-1242-4

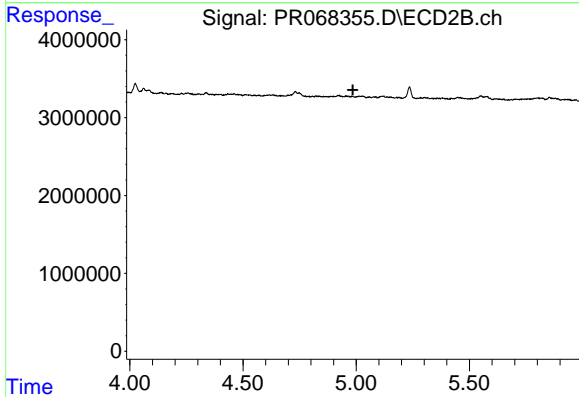
R.T.: 0.000 min  
 Exp R.T. : 4.433 min  
 Response: 0  
 Conc: N.D.



#20 AR-1242-5

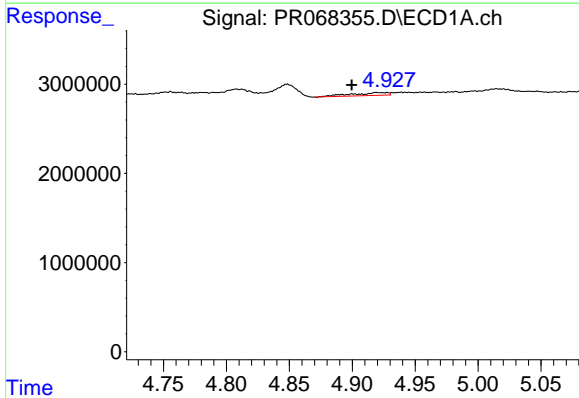
R.T.: 5.848 min  
 Delta R.T.: -0.029 min  
 Response: 1219067  
 Conc: 25.75 ng/ml

Instrument :  
 ECD\_R  
 ClientSampleId :  
 E0CL1



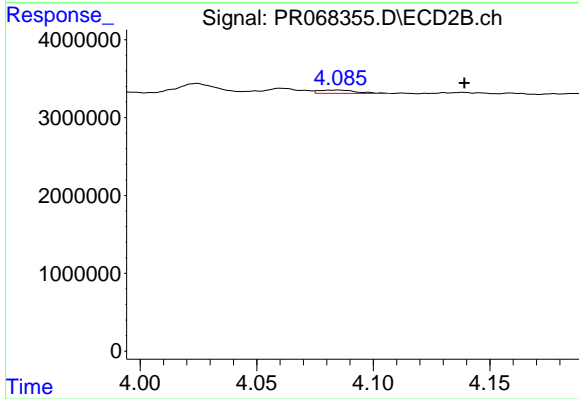
#20 AR-1242-5

R.T.: 0.000 min  
 Exp R.T. : 4.985 min  
 Response: 0  
 Conc: N.D.



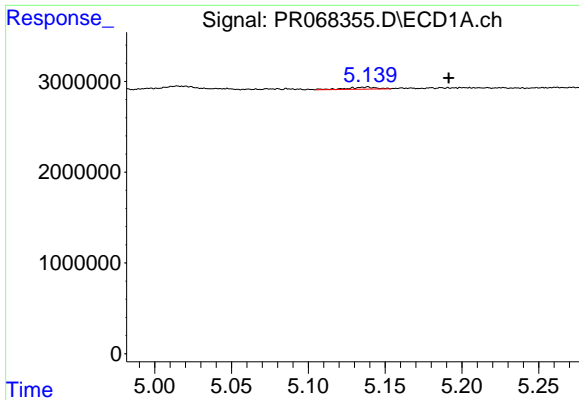
#21 AR-1248-1

R.T.: 4.920 min  
 Delta R.T.: 0.020 min  
 Response: 639125  
 Conc: 19.07 ng/ml



#21 AR-1248-1

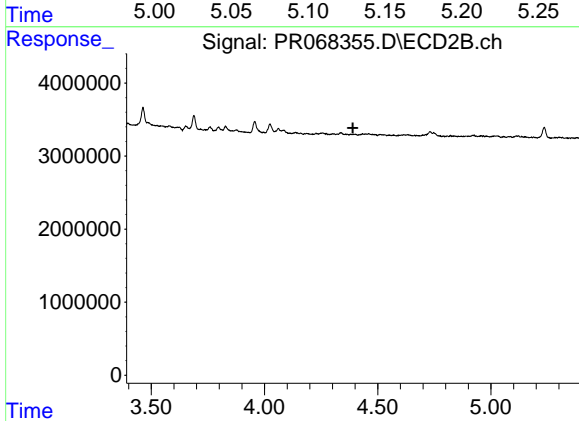
R.T.: 4.085 min  
 Delta R.T.: -0.054 min  
 Response: 486690  
 Conc: 4.34 ng/ml



#22 AR-1248-2

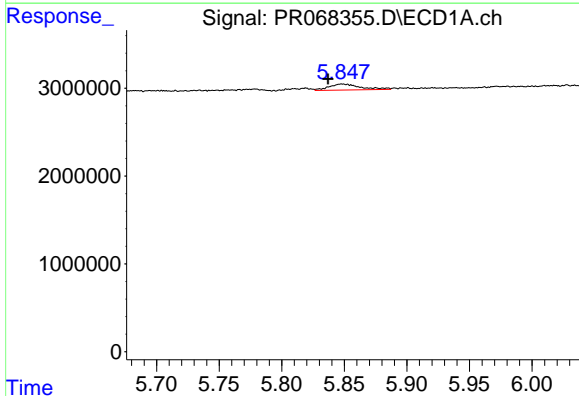
R.T.: 5.139 min  
 Delta R.T.: -0.053 min  
 Response: 291037  
 Conc: 7.16 ng/ml

Instrument :  
 ECD\_R  
 ClientSampleId :  
 E0CL1



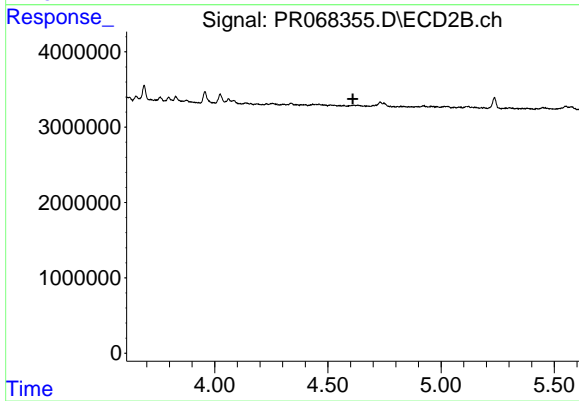
#22 AR-1248-2

R.T.: 0.000 min  
 Exp R.T. : 4.390 min  
 Response: 0  
 Conc: N.D.



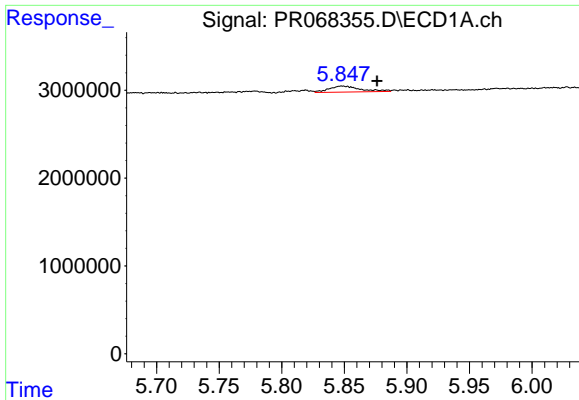
#24 AR-1248-4

R.T.: 5.848 min  
 Delta R.T.: 0.011 min  
 Response: 1219067  
 Conc: 17.89 ng/ml



#24 AR-1248-4

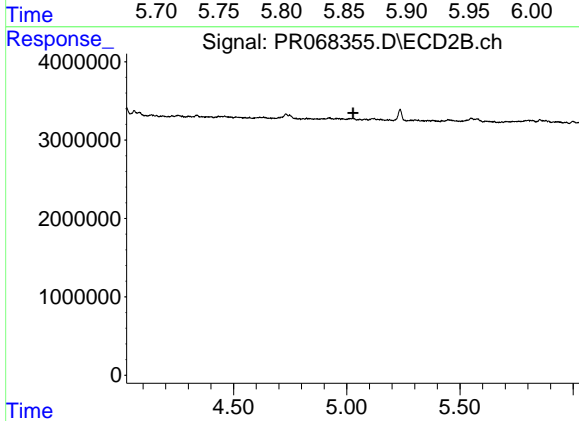
R.T.: 0.000 min  
 Exp R.T. : 4.610 min  
 Response: 0  
 Conc: N.D.



#25 AR-1248-5

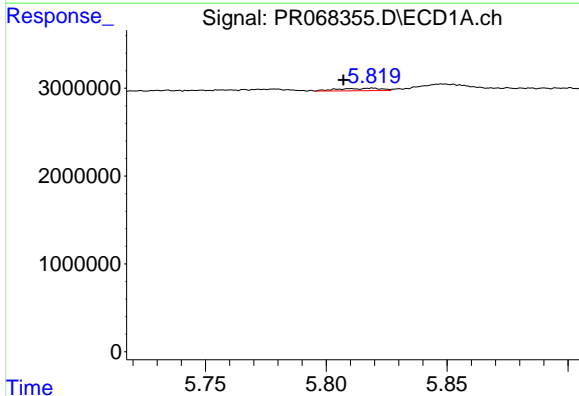
R.T.: 5.848 min  
 Delta R.T.: -0.028 min  
 Response: 1219067  
 Conc: 15.52 ng/ml

Instrument :  
 ECD\_R  
 ClientSampleId :  
 E0CL1



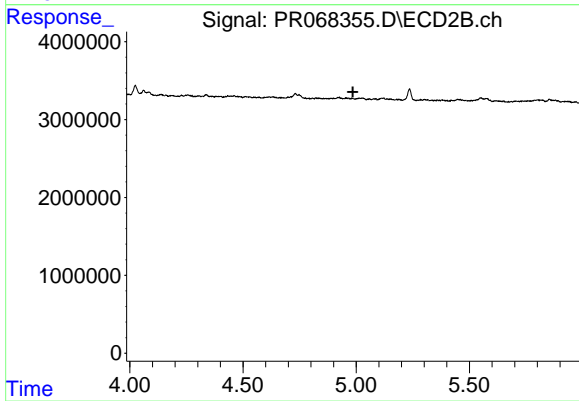
#25 AR-1248-5

R.T.: 0.000 min  
 Exp R.T. : 5.027 min  
 Response: 0  
 Conc: N.D.



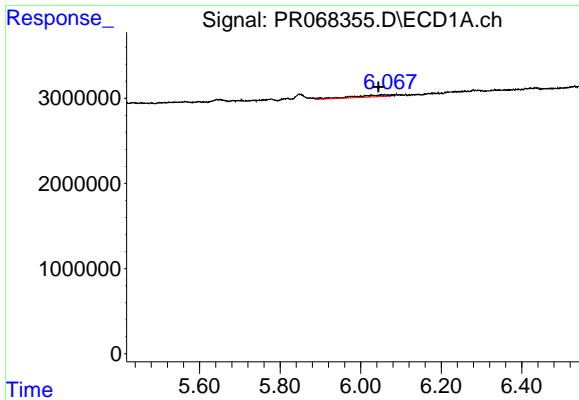
#26 AR-1254-1

R.T.: 5.819 min  
 Delta R.T.: 0.012 min  
 Response: 338192  
 Conc: 5.63 ng/ml



#26 AR-1254-1

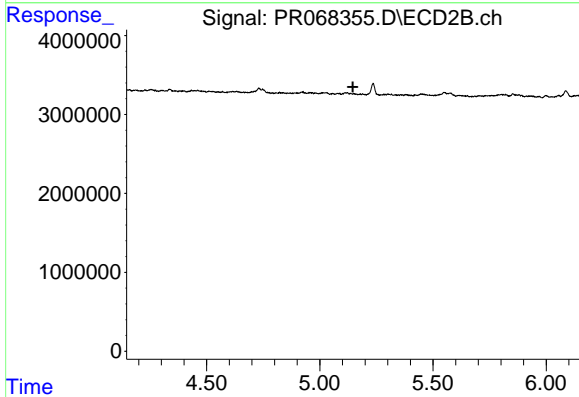
R.T.: 0.000 min  
 Exp R.T. : 4.985 min  
 Response: 0  
 Conc: N.D.



#27 AR-1254-2

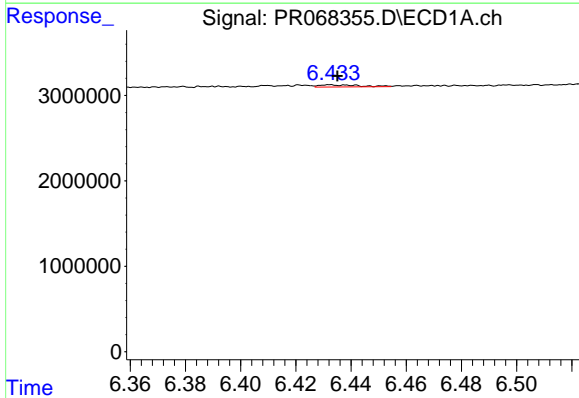
R.T.: 6.051 min  
 Delta R.T.: 0.008 min  
 Response: 1348519  
 Conc: 13.52 ng/ml

Instrument :  
 ECD\_R  
 ClientSampleId :  
 E0CL1



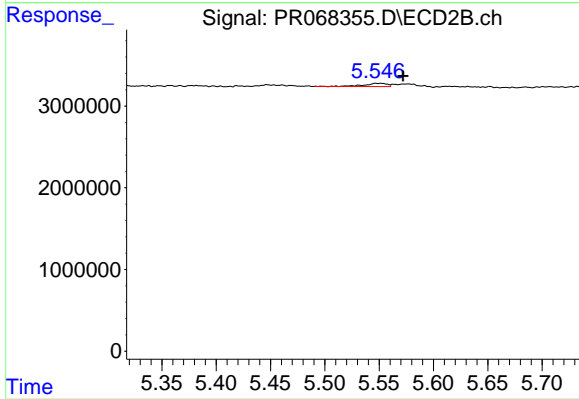
#27 AR-1254-2

R.T.: 0.000 min  
 Exp R.T. : 5.146 min  
 Response: 0  
 Conc: N.D.



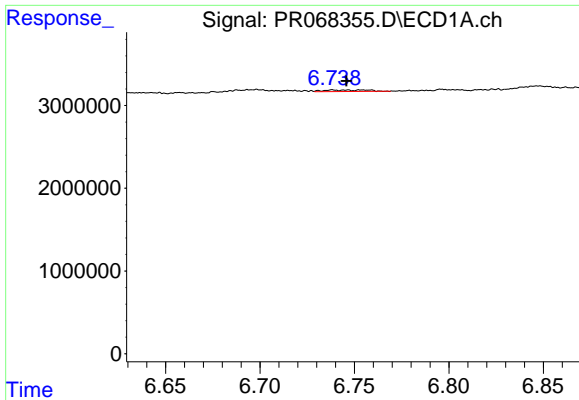
#28 AR-1254-3

R.T.: 6.432 min  
 Delta R.T.: -0.003 min  
 Response: 258899  
 Conc: 2.00 ng/ml



#28 AR-1254-3

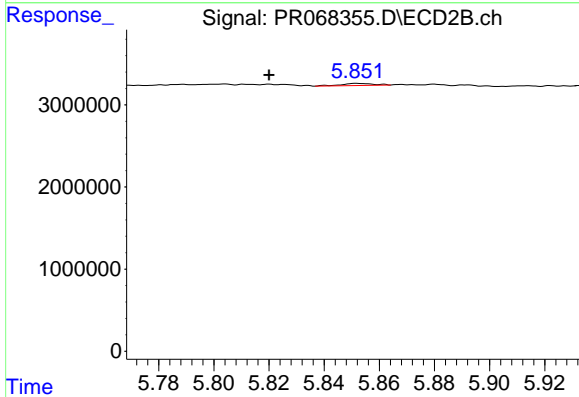
R.T.: 5.552 min  
 Delta R.T.: -0.020 min  
 Response: 574209  
 Conc: 1.33 ng/ml



#29 AR-1254-4

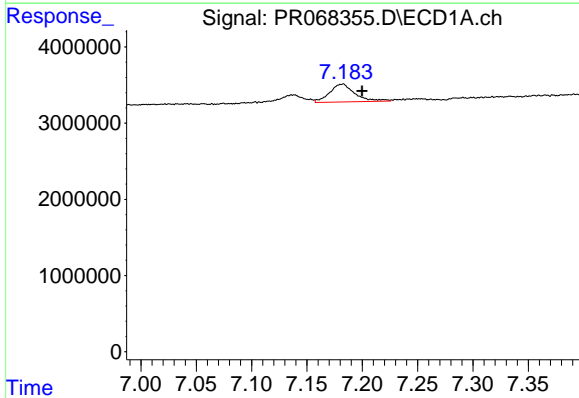
R.T.: 6.739 min  
 Delta R.T.: -0.007 min  
 Response: 302265  
 Conc: 2.71 ng/ml

Instrument :  
 ECD\_R  
 ClientSampleId :  
 E0CL1



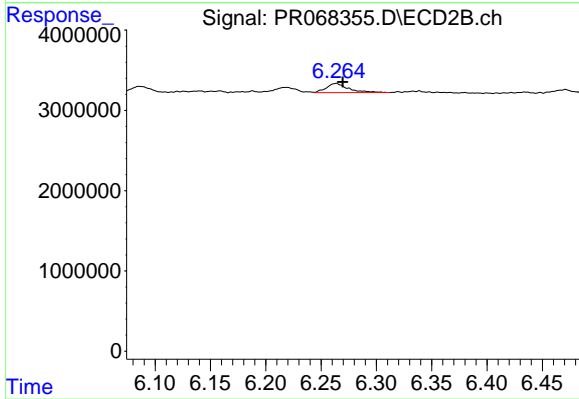
#29 AR-1254-4

R.T.: 5.852 min  
 Delta R.T.: 0.032 min  
 Response: 202626  
 Conc: 0.76 ng/ml



#30 AR-1254-5

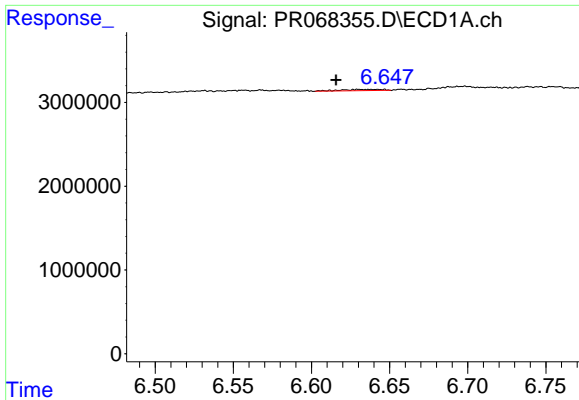
R.T.: 7.182 min  
 Delta R.T.: -0.018 min  
 Response: 3723408  
 Conc: 29.66 ng/ml



#30 AR-1254-5

R.T.: 6.264 min  
 Delta R.T.: -0.006 min  
 Response: 1595838  
 Conc: 4.05 ng/ml

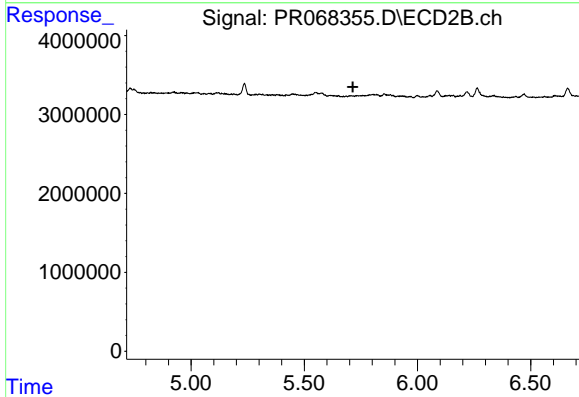




#31 AR-1260-1

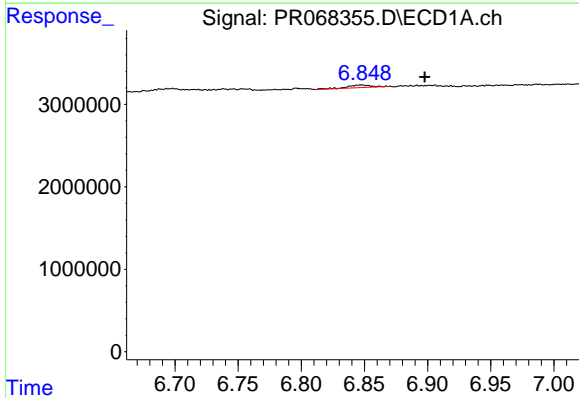
R.T.: 6.642 min  
 Delta R.T.: 0.026 min  
 Response: 282721  
 Conc: 3.52 ng/ml

Instrument :  
 ECD\_R  
 ClientSampleId :  
 E0CL1



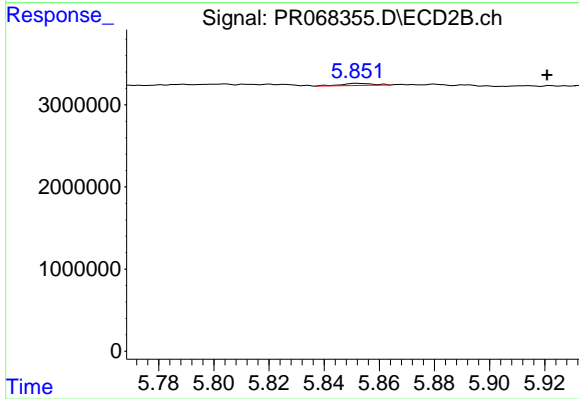
#31 AR-1260-1

R.T.: 0.000 min  
 Exp R.T. : 5.714 min  
 Response: 0  
 Conc: N.D.



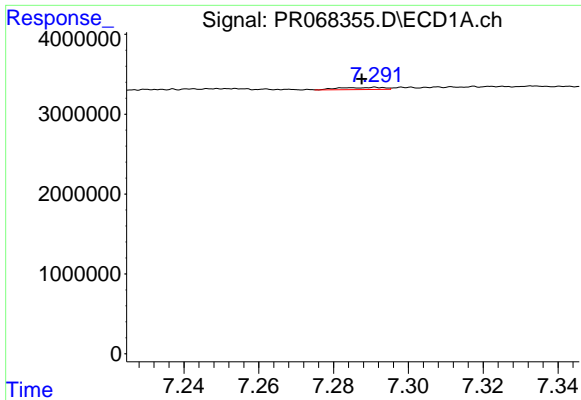
#32 AR-1260-2

R.T.: 6.847 min  
 Delta R.T.: -0.051 min  
 Response: 422454  
 Conc: 2.90 ng/ml



#32 AR-1260-2

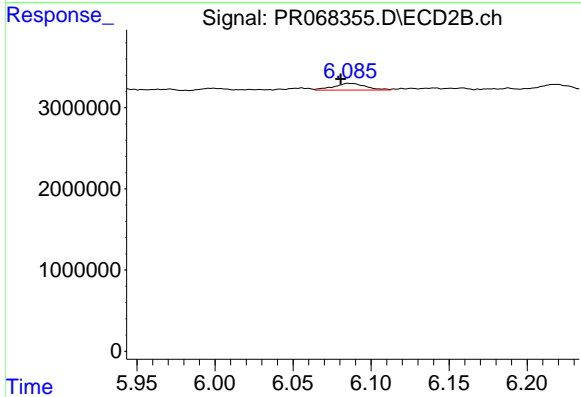
R.T.: 5.852 min  
 Delta R.T.: -0.069 min  
 Response: 202626  
 Conc: 0.55 ng/ml



#33 AR-1260-3

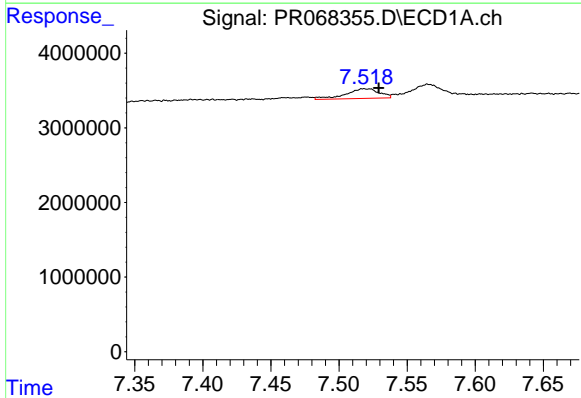
R.T.: 7.291 min  
 Delta R.T.: 0.004 min  
 Response: 219860  
 Conc: 1.33 ng/ml

Instrument :  
 ECD\_R  
 ClientSampleId :  
 E0CL1



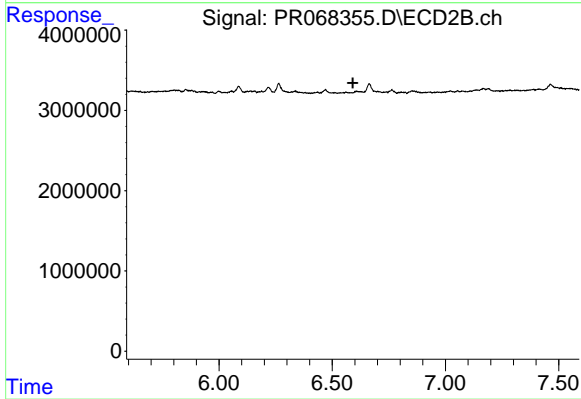
#33 AR-1260-3

R.T.: 6.086 min  
 Delta R.T.: 0.005 min  
 Response: 1192276  
 Conc: 3.49 ng/ml



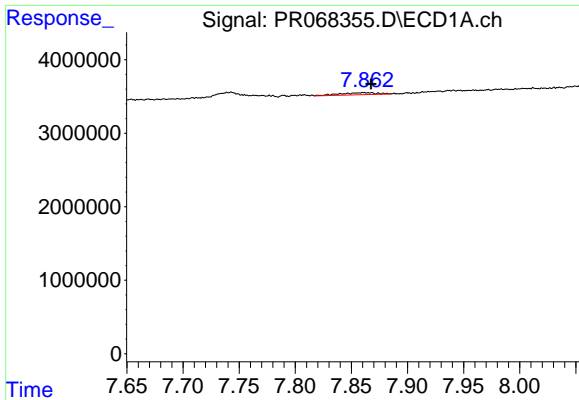
#34 AR-1260-4

R.T.: 7.518 min  
 Delta R.T.: -0.011 min  
 Response: 2211133  
 Conc: 16.36 ng/ml



#34 AR-1260-4

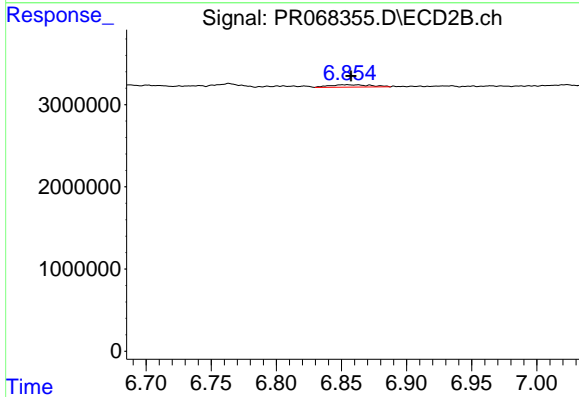
R.T.: 0.000 min  
 Exp R.T. : 6.591 min  
 Response: 0  
 Conc: N.D.



#35 AR-1260-5

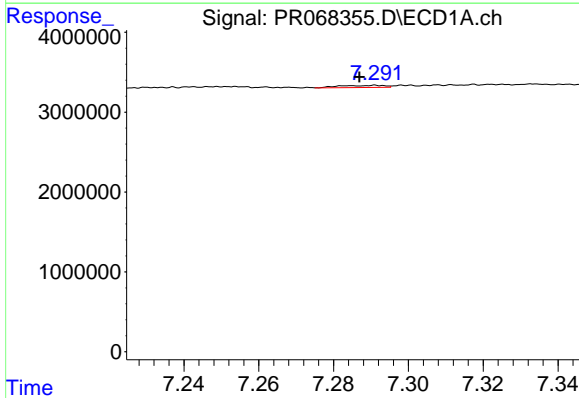
R.T.: 7.861 min  
 Delta R.T.: -0.007 min  
 Response: 607760  
 Conc: 1.30 ng/ml

Instrument :  
 ECD\_R  
 ClientSampleId :  
 E0CL1



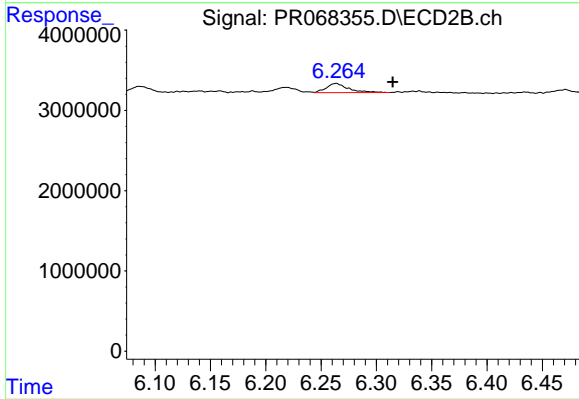
#35 AR-1260-5

R.T.: 6.855 min  
 Delta R.T.: -0.003 min  
 Response: 643564  
 Conc: 0.96 ng/ml



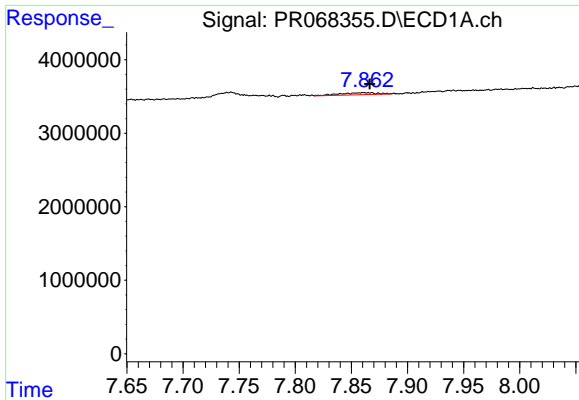
#36 AR-1262-1

R.T.: 7.291 min  
 Delta R.T.: 0.004 min  
 Response: 219860  
 Conc: 0.94 ng/ml



#36 AR-1262-1

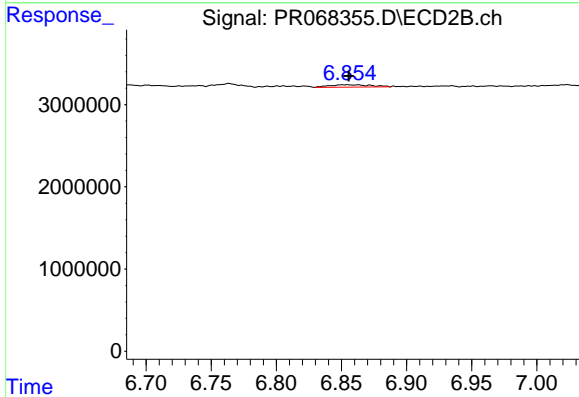
R.T.: 6.264 min  
 Delta R.T.: -0.051 min  
 Response: 1595838  
 Conc: 3.88 ng/ml



#37 AR-1262-2

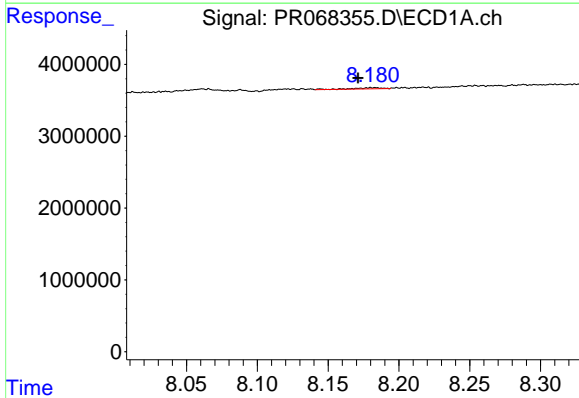
R.T.: 7.861 min  
 Delta R.T.: -0.005 min  
 Response: 607760  
 Conc: 1.17 ng/ml

Instrument :  
 ECD\_R  
 ClientSampleId :  
 E0CL1



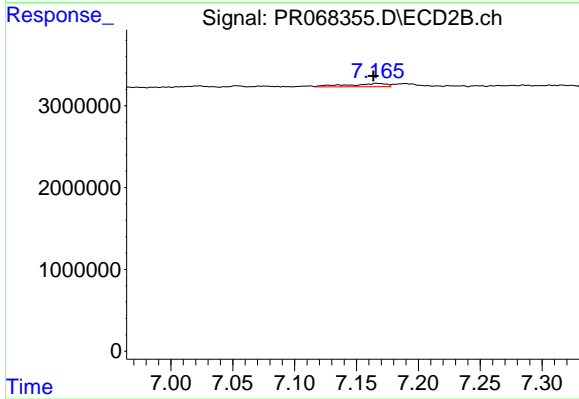
#37 AR-1262-2

R.T.: 6.855 min  
 Delta R.T.: 0.000 min  
 Response: 643564  
 Conc: 0.88 ng/ml



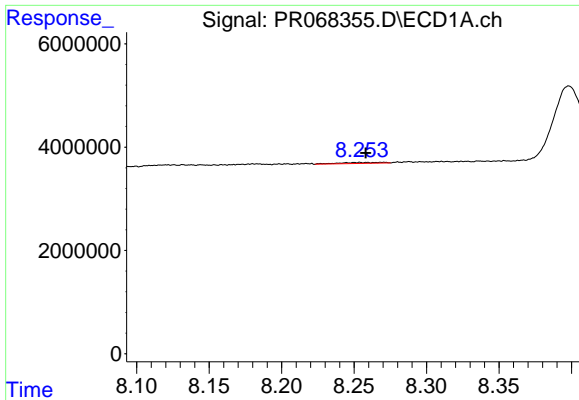
#38 AR-1262-3

R.T.: 8.182 min  
 Delta R.T.: 0.011 min  
 Response: 234015  
 Conc: 0.66 ng/ml



#38 AR-1262-3

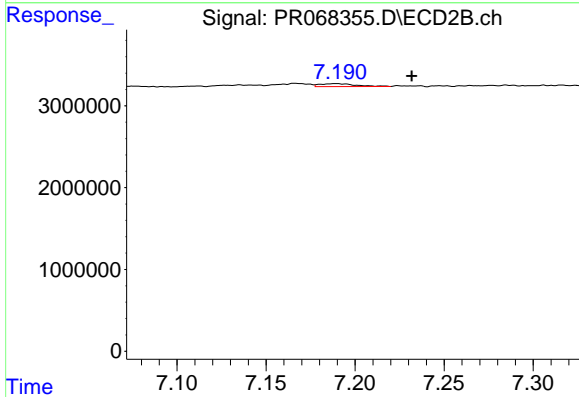
R.T.: 7.166 min  
 Delta R.T.: 0.003 min  
 Response: 852303  
 Conc: 2.91 ng/ml



#39 AR-1262-4

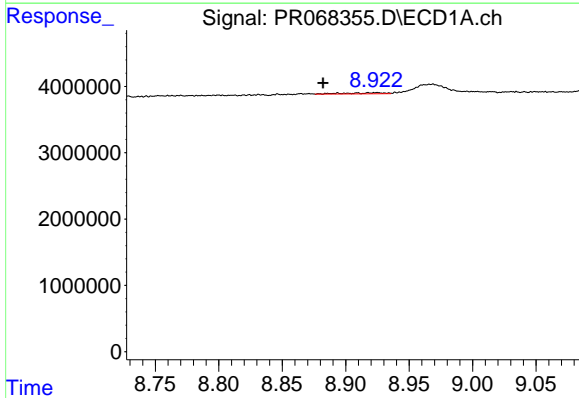
R.T.: 8.254 min  
 Delta R.T.: -0.004 min  
 Response: 369788  
 Conc: 1.24 ng/ml

Instrument :  
 ECD\_R  
 ClientSampleId :  
 E0CL1



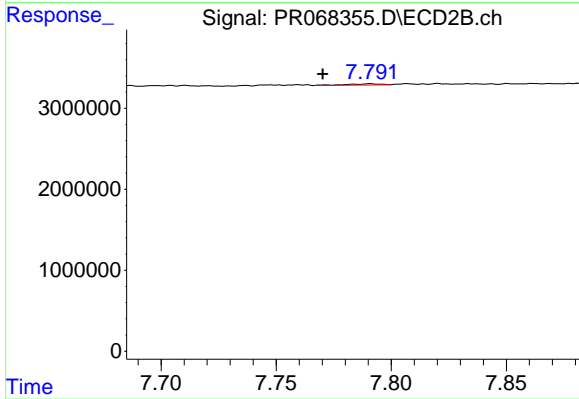
#39 AR-1262-4

R.T.: 7.189 min  
 Delta R.T.: -0.043 min  
 Response: 504493  
 Conc: 0.93 ng/ml



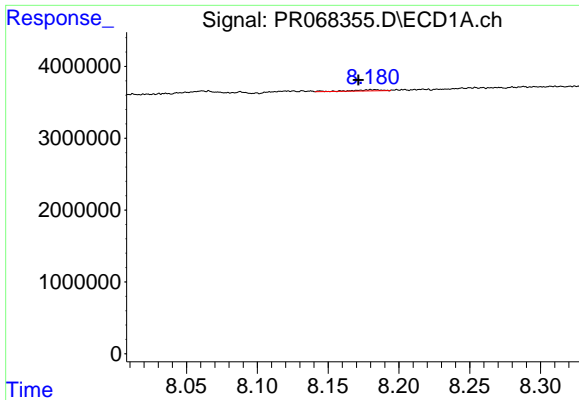
#40 AR-1262-5

R.T.: 8.918 min  
 Delta R.T.: 0.036 min  
 Response: 328591  
 Conc: 1.53 ng/ml



#40 AR-1262-5

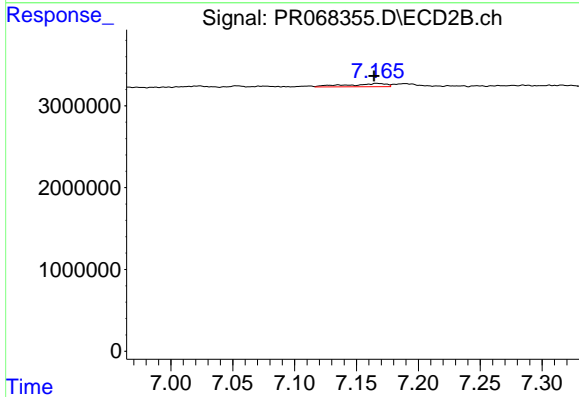
R.T.: 7.791 min  
 Delta R.T.: 0.021 min  
 Response: 159722  
 Conc: 0.64 ng/ml



#41 AR-1268-1

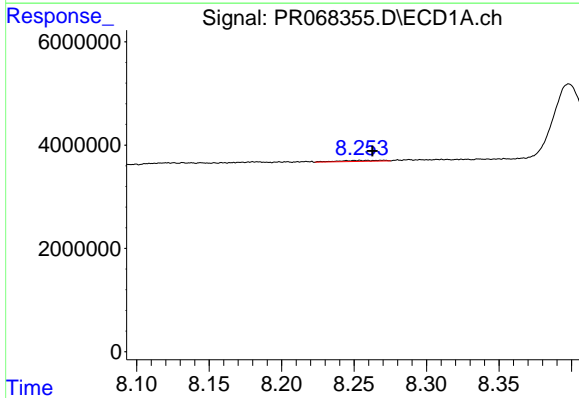
R.T.: 8.182 min  
 Delta R.T.: 0.011 min  
 Response: 234015  
 Conc: 0.30 ng/ml

Instrument :  
 ECD\_R  
 ClientSampleId :  
 E0CL1



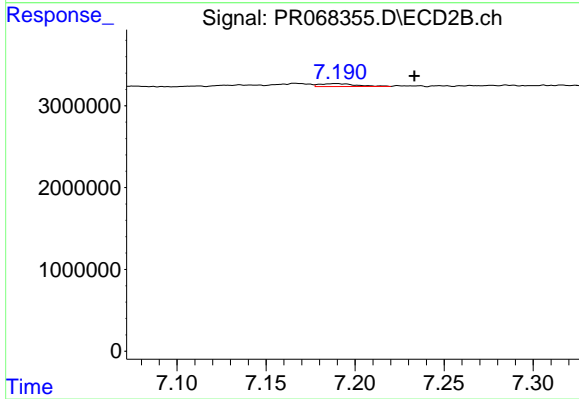
#41 AR-1268-1

R.T.: 7.166 min  
 Delta R.T.: 0.002 min  
 Response: 852303  
 Conc: 0.95 ng/ml



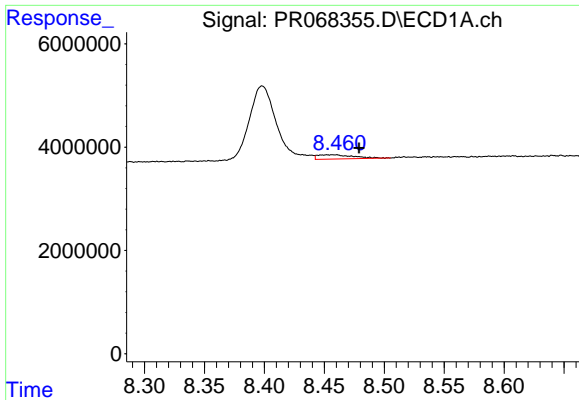
#42 AR-1268-2

R.T.: 8.254 min  
 Delta R.T.: -0.009 min  
 Response: 369788  
 Conc: 0.54 ng/ml



#42 AR-1268-2

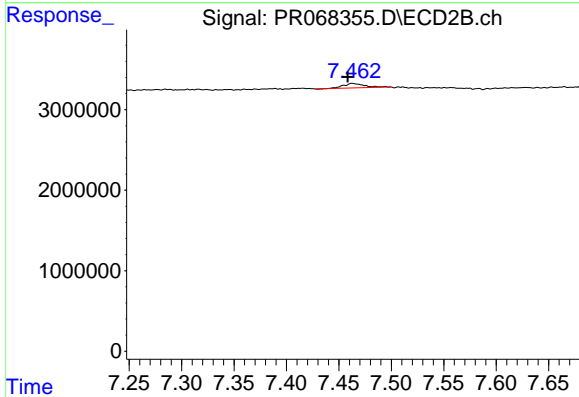
R.T.: 7.189 min  
 Delta R.T.: -0.044 min  
 Response: 504493  
 Conc: 0.61 ng/ml



#43 AR-1268-3

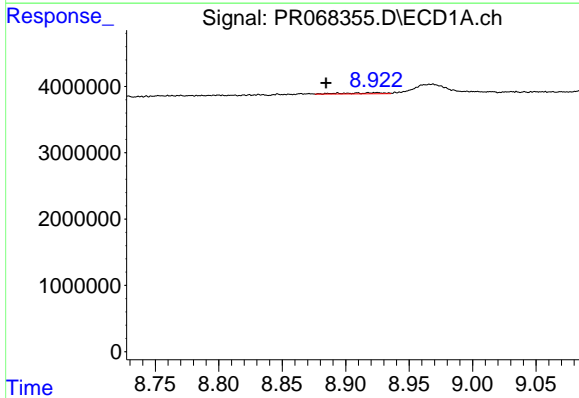
R.T.: 8.458 min  
 Delta R.T.: -0.021 min  
 Response: 1670188  
 Conc: 2.57 ng/ml

Instrument :  
 ECD\_R  
 ClientSampleId :  
 E0CL1



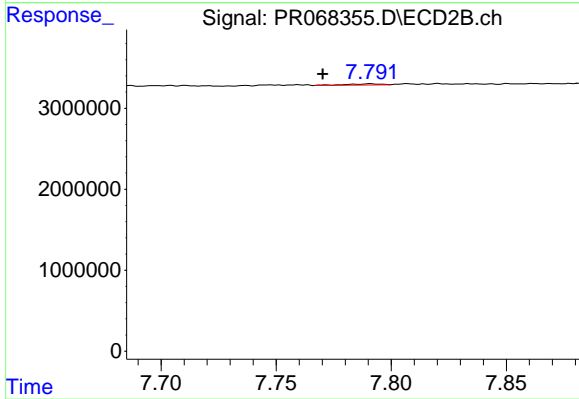
#43 AR-1268-3

R.T.: 7.463 min  
 Delta R.T.: 0.005 min  
 Response: 795511  
 Conc: 1.14 ng/ml



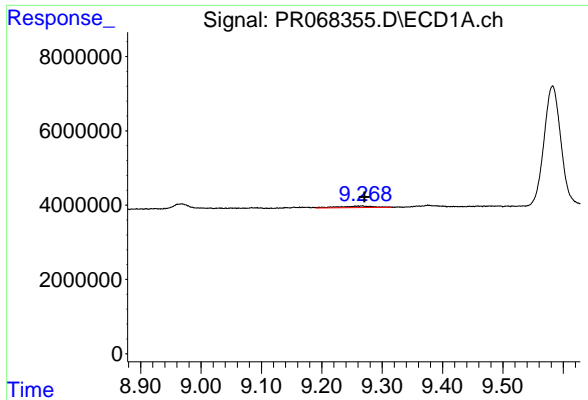
#44 AR-1268-4

R.T.: 8.918 min  
 Delta R.T.: 0.033 min  
 Response: 328591  
 Conc: 1.29 ng/ml



#44 AR-1268-4

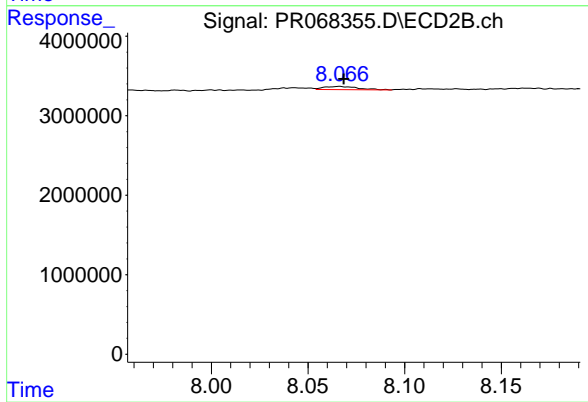
R.T.: 7.791 min  
 Delta R.T.: 0.021 min  
 Response: 159722  
 Conc: 0.53 ng/ml



#45 AR-1268-5

R.T.: 9.266 min  
Delta R.T.: -0.004 min  
Response: 1609247  
Conc: 0.86 ng/ml

Instrument :  
ECD\_R  
ClientSampleId :  
E0CL1



#45 AR-1268-5

R.T.: 8.066 min  
Delta R.T.: -0.002 min  
Response: 486136  
Conc: 0.23 ng/ml