

Data Path : Z:\pestpcbsrv\HPCHEM1\ECD_R\Data\PR081724\
 Data File : PR068360.D
 Signal(s) : Signal #1: ECD1A.ch Signal #2: ECD2B.ch
 Acq On : 16 Aug 2024 19:07
 Operator : AJ\MA
 Sample : P3504-10
 Misc :
 ALS Vial : 19 Sample Multiplier: 1

Instrument :
 ECD_R
 ClientSampleId :

Integration File signal 1: autoint1.e
 Integration File signal 2: autoint2.e
 Quant Time: Aug 17 01:26:39 2024
 Quant Method : Z:\pestpcbsrv\HPCHEM1\ECD_R\Method\PR081424CLP.M
 Quant Title : GC EXTRACTABLES
 QLast Update : Wed Aug 14 10:38:14 2024
 Response via : Initial Calibration
 Integrator: ChemStation

Volume Inj. : 1 µl
 Signal #1 Phase : ZB MR1 Signal #2 Phase: ZB MR2
 Signal #1 Info : 30Mx0.32mmx 0.5µm Signal #2 Info : 30M x 0.32mm x 0.25µm

Compound	RT#1	RT#2	Resp#1	Resp#2	ng/ml	ng/ml

System Monitoring Compounds						
1) SA Tetrachlo...	3.674	3.007	38263197	96784437	16.072	17.805
2) SA Decachlor...	9.581	8.319	92262365	106.7E6	36.792	37.852
Target Compounds						
3) L1 AR-1016-1	4.848f	4.106	9591096	1010770	182.315	5.633 #
4) L1 AR-1016-2	4.955	4.106f	2568730	1010770	26.116	4.016 #
5) L1 AR-1016-3	4.978	4.289f	456845	419177	7.106	3.059 #
6) L1 AR-1016-4	5.084	0.000	480439	0	9.017	N.D. #
7) L1 AR-1016-5	0.000	4.597	0	239927	N.D.	1.639 #
9) L2 AR-1221-2	3.987	3.313	919032	1179253	50.631	26.761 #
10) L2 AR-1221-3	0.000	3.373	0	126486	N.D.	0.883 #
11) L3 AR-1232-1	0.000	3.373	0	126486	N.D.	1.117 #
12) L3 AR-1232-2	4.608	4.106f	6256654	1010770	270.507	8.871 #
13) L3 AR-1232-3	4.955	4.289f	2568730	419177	56.259	6.850 #
14) L3 AR-1232-4	5.084	4.465	480439	1067183	20.765	19.203
15) L3 AR-1232-5	5.176	4.597	416043	239927	38.399	4.009 #
16) L4 AR-1242-1	4.848f	4.106	9591096	1010770	216.382	6.620 #
17) L4 AR-1242-2	4.955	4.106f	2568730	1010770	30.977	4.760 #
18) L4 AR-1242-3	4.978	4.289f	456845	419177	8.461	3.620 #
19) L4 AR-1242-4	5.084	4.465	480439	1067183	10.540	9.263
20) L4 AR-1242-5	5.850	5.007	1765502	1098843	37.290	7.443 #
21) L5 AR-1248-1	4.848f	4.106	9591096	1010770	286.103	9.003 #
22) L5 AR-1248-2	5.176	0.000	416043	0	10.234	N.D. #
23) L5 AR-1248-3	0.000	4.465	0	1067183	N.D.	6.296 #
24) L5 AR-1248-4	5.850	4.597	1765502	239927	25.906	1.178 #
25) L5 AR-1248-5	5.850	5.007	1765502	1098843	22.473	5.496 #
26) L6 AR-1254-1	5.850f	5.007	1765502	1098843	29.394	3.584 #
27) L6 AR-1254-2	6.046	5.216f	1668686	624754	16.728	2.292 #
28) L6 AR-1254-3	6.426	5.550	449210	1070616	3.477	2.472 #
29) L6 AR-1254-4	6.685f	5.812	383054	1414630	3.429	5.318 #
30) L6 AR-1254-5	7.233	6.219f	1315301	4565749	10.479	11.595
31) L7 AR-1260-1	6.572f	5.745	151541	1473373	1.887	4.838 #
32) L7 AR-1260-2	0.000	5.923	0	1083198	N.D.	2.933 #
33) L7 AR-1260-3	7.285	6.087	223748	1622865	1.358	4.754 #
34) L7 AR-1260-4	7.552	6.626	2500212	3598868	18.496	12.210 #
35) L7 AR-1260-5	7.860	6.855	3394868	1532421	7.242	2.276 #
36) L8 AR-1262-1	7.285	0.000	223748	0	0.956	N.D. #
37) L8 AR-1262-2	7.860	6.855	3394868	1532421	6.554	2.103 #
38) L8 AR-1262-3	8.133f	7.143	293176	5215818	0.825	17.781 #
39) L8 AR-1262-4	8.280	7.263	242744	5742593	0.812	10.574 #
40) L8 AR-1262-5	8.901	7.786	570763	775125	2.650	3.092
41) L9 AR-1268-1	8.133f	7.143	293176	5215818	0.381	5.793 #
42) L9 AR-1268-2	8.280	7.263	242744	5742593	0.351	6.967 #

Data Path : Z:\pestpcbsrv\HPCHEM1\ECD_R\Data\PR081724\
 Data File : PR068360.D
 Signal(s) : Signal #1: ECD1A.ch Signal #2: ECD2B.ch
 Acq On : 16 Aug 2024 19:07
 Operator : AJ\MA
 Sample : P3504-10
 Misc :
 ALS Vial : 19 Sample Multiplier: 1

Instrument :
 ECD_R
 ClientSampleId :

Integration File signal 1: autoint1.e
 Integration File signal 2: autoint2.e
 Quant Time: Aug 17 01:26:39 2024
 Quant Method : Z:\pestpcbsrv\HPCHEM1\ECD_R\Method\PR081424CLP.M
 Quant Title : GC EXTRACTABLES
 QLast Update : Wed Aug 14 10:38:14 2024
 Response via : Initial Calibration
 Integrator: ChemStation

Volume Inj. : 1 µl
 Signal #1 Phase : ZB MR1 Signal #2 Phase: ZB MR2
 Signal #1 Info : 30Mx0.32mmx 0.5µm Signal #2 Info : 30M x 0.32mm x 0.25µm

	Compound	RT#1	RT#2	Resp#1	Resp#2	ng/ml	ng/ml
43)	L9 AR-1268-3	8.488	7.467	1594011	401117	2.449	0.576 #
44)	L9 AR-1268-4	8.901	7.786	570763	775125	2.247	2.584
45)	L9 AR-1268-5	9.279	8.067	1284905	-620198	0.688	N.D. #

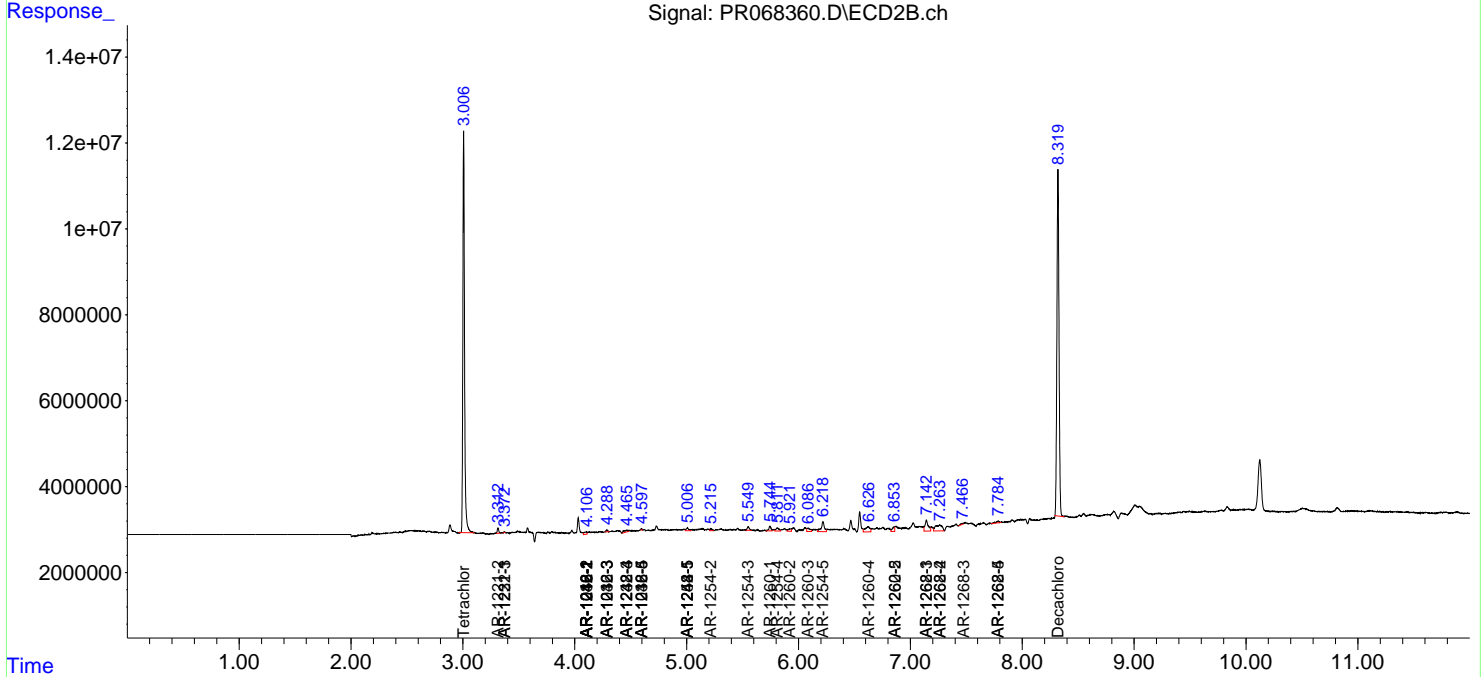
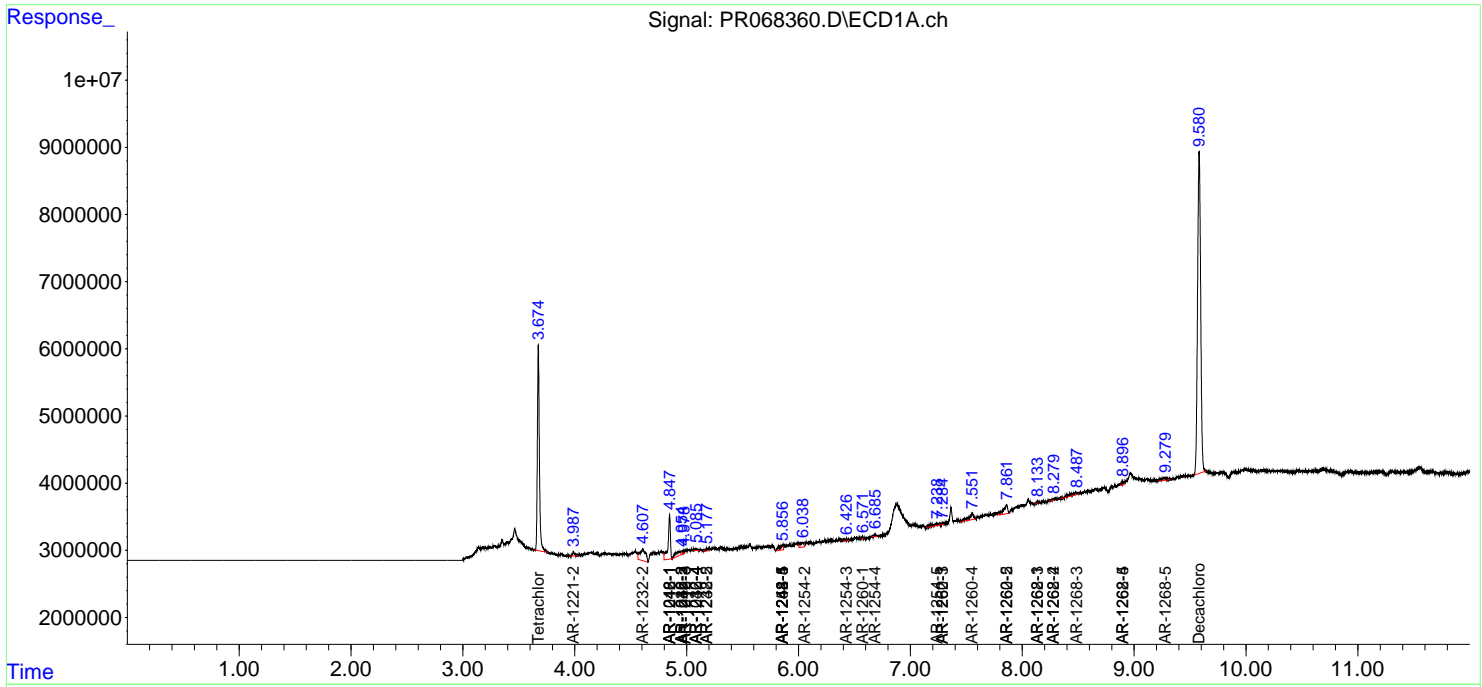
(f)=RT Delta > 1/2 Window (#)=Amounts differ by > 25% (m)=manual int.

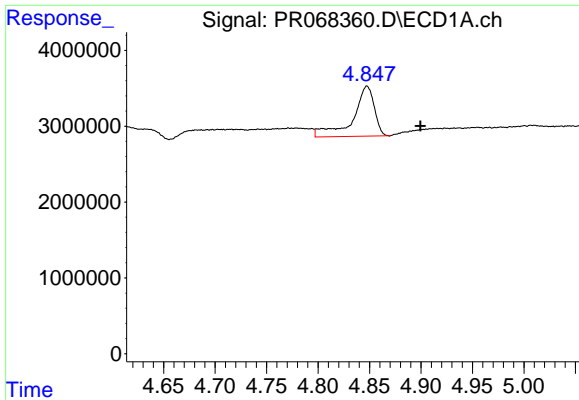
Data Path : Z:\pestpcbsrv\HPCHEM1\ECD_R\Data\PR081724\
 Data File : PR068360.D
 Signal(s) : Signal #1: ECD1A.ch Signal #2: ECD2B.ch
 Acq On : 16 Aug 2024 19:07
 Operator : AJ\MA
 Sample : P3504-10
 Misc :
 ALS Vial : 19 Sample Multiplier: 1

Instrument :
 ECD_R
 ClientSampleId :

Integration File signal 1: autoint1.e
 Integration File signal 2: autoint2.e
 Quant Time: Aug 17 01:26:39 2024
 Quant Method : Z:\pestpcbsrv\HPCHEM1\ECD_R\Method\PR081424CLP.M
 Quant Title : GC EXTRACTABLES
 QLast Update : Wed Aug 14 10:38:14 2024
 Response via : Initial Calibration
 Integrator: ChemStation

Volume Inj. : 1 µl
 Signal #1 Phase : ZB MR1 Signal #2 Phase: ZB MR2
 Signal #1 Info : 30Mx0.32mmx 0.5µm Signal #2 Info : 30M x 0.32mm x 0.25µm

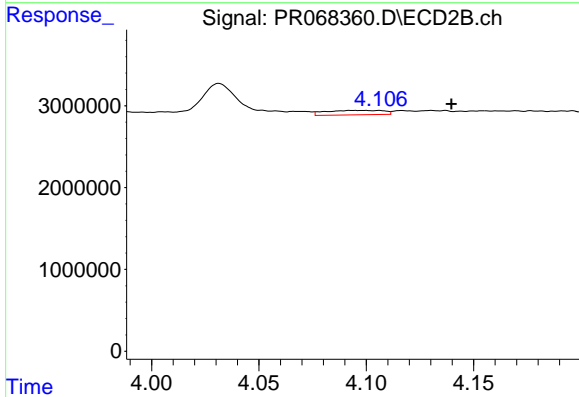




#3 AR-1016-1

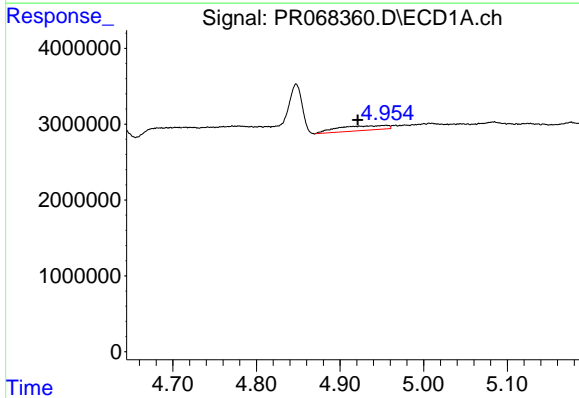
R.T.: 4.848 min
 Delta R.T.: -0.052 min
 Response: 9591096
 Conc: 182.31 ng/ml

Instrument :
 ECD_R
 ClientSampleId :



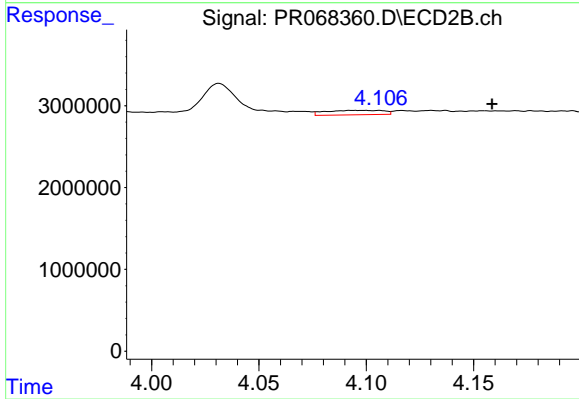
#3 AR-1016-1

R.T.: 4.106 min
 Delta R.T.: -0.034 min
 Response: 1010770
 Conc: 5.63 ng/ml



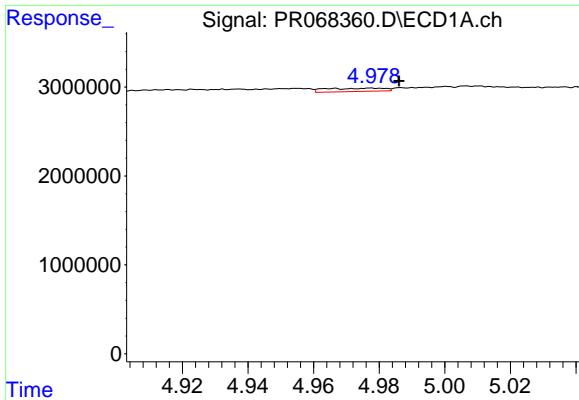
#4 AR-1016-2

R.T.: 4.955 min
 Delta R.T.: 0.034 min
 Response: 2568730
 Conc: 26.12 ng/ml



#4 AR-1016-2

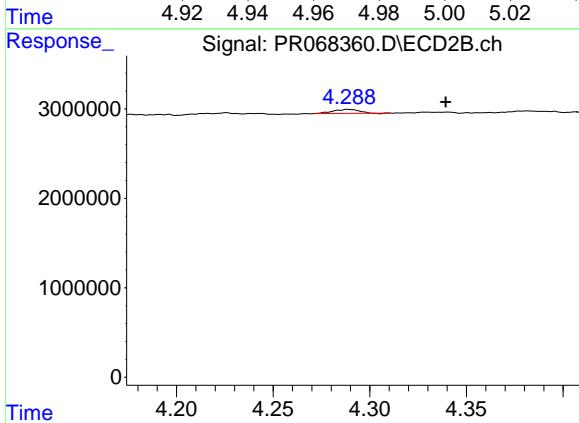
R.T.: 4.106 min
 Delta R.T.: -0.053 min
 Response: 1010770
 Conc: 4.02 ng/ml



#5 AR-1016-3

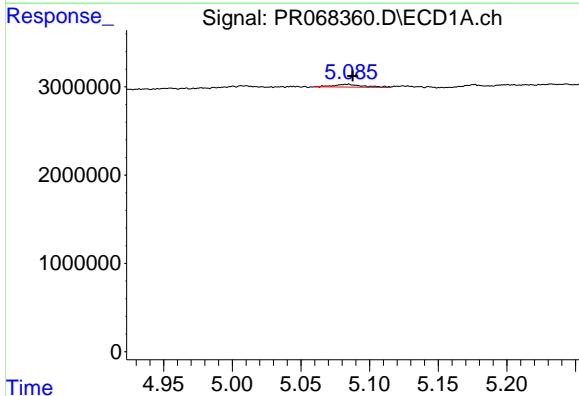
R.T.: 4.978 min
 Delta R.T.: -0.008 min
 Response: 456845
 Conc: 7.11 ng/ml

Instrument :
 ECD_R
 ClientSampleId :



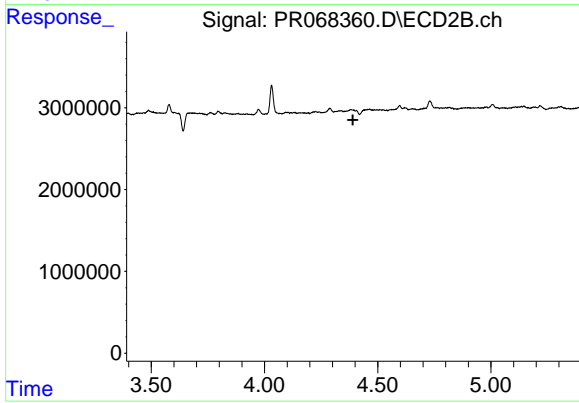
#5 AR-1016-3

R.T.: 4.289 min
 Delta R.T.: -0.050 min
 Response: 419177
 Conc: 3.06 ng/ml



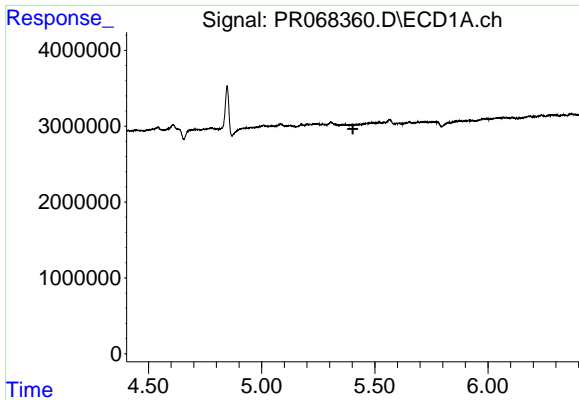
#6 AR-1016-4

R.T.: 5.084 min
 Delta R.T.: -0.004 min
 Response: 480439
 Conc: 9.02 ng/ml



#6 AR-1016-4

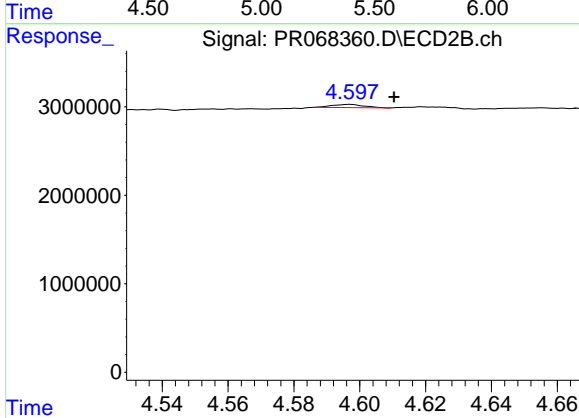
R.T.: 0.000 min
 Exp R.T. : 4.390 min
 Response: 0
 Conc: N.D.



#7 AR-1016-5

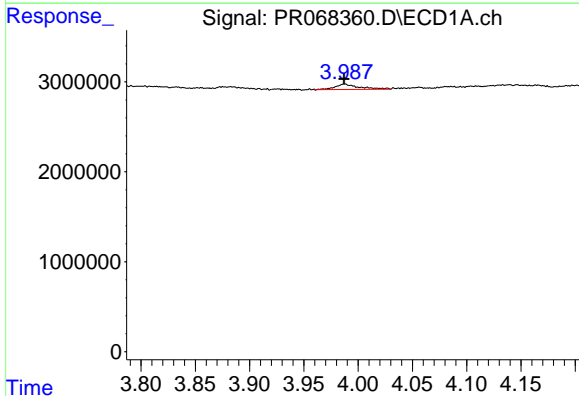
R.T.: 0.000 min
 Exp R.T.: 5.403 min
 Response: 0
 Conc: N.D.

Instrument :
 ECD_R
 ClientSampleId :



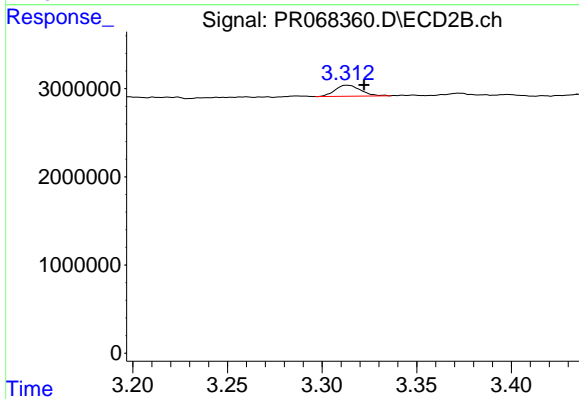
#7 AR-1016-5

R.T.: 4.597 min
 Delta R.T.: -0.014 min
 Response: 239927
 Conc: 1.64 ng/ml



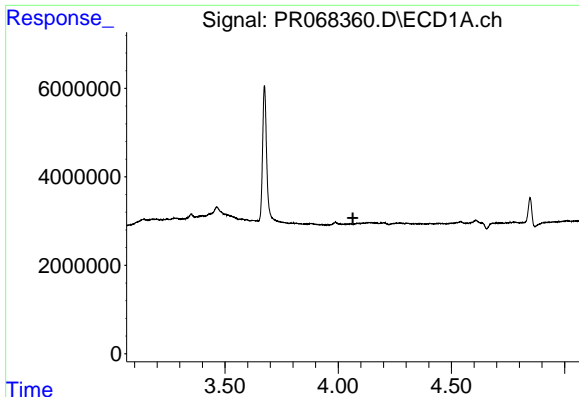
#9 AR-1221-2

R.T.: 3.987 min
 Delta R.T.: 0.000 min
 Response: 919032
 Conc: 50.63 ng/ml



#9 AR-1221-2

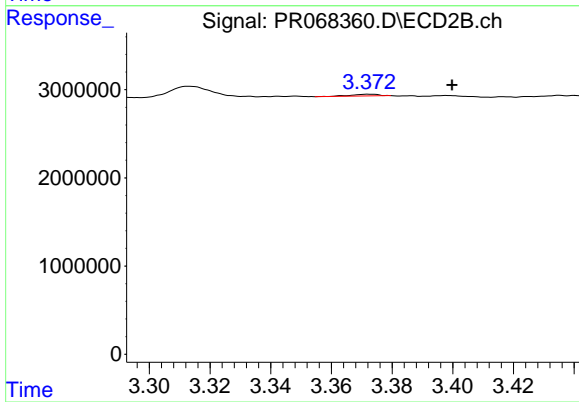
R.T.: 3.313 min
 Delta R.T.: -0.009 min
 Response: 1179253
 Conc: 26.76 ng/ml



#10 AR-1221-3

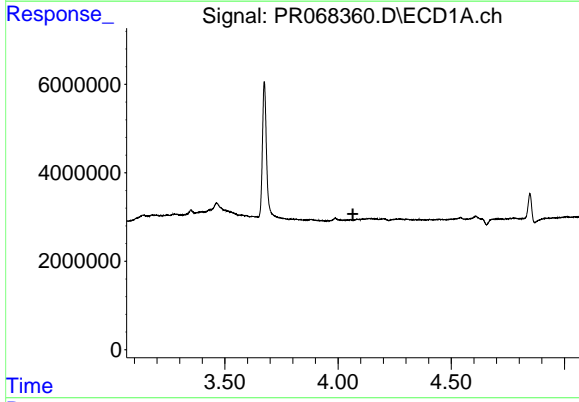
R.T.: 0.000 min
 Exp R.T. : 4.065 min
 Response: 0
 Conc: N.D.

Instrument :
 ECD_R
 ClientSampleId :



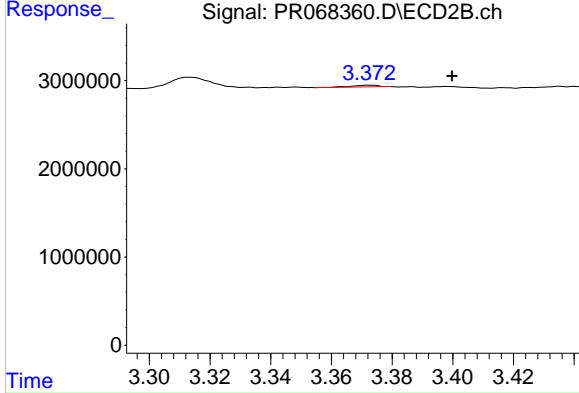
#10 AR-1221-3

R.T.: 3.373 min
 Delta R.T.: -0.027 min
 Response: 126486
 Conc: 0.88 ng/ml



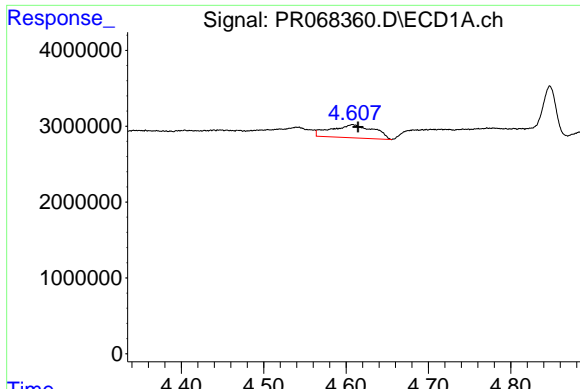
#11 AR-1232-1

R.T.: 0.000 min
 Exp R.T. : 4.066 min
 Response: 0
 Conc: N.D.



#11 AR-1232-1

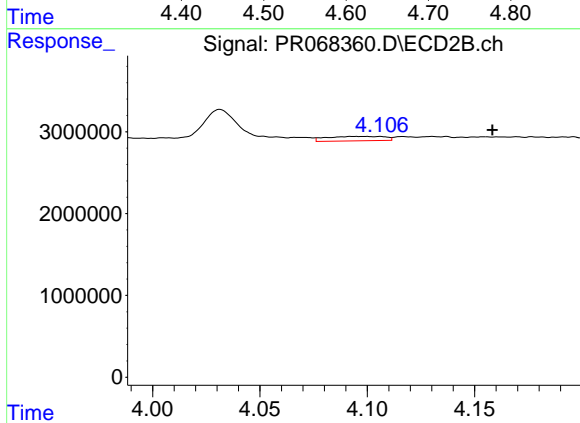
R.T.: 3.373 min
 Delta R.T.: -0.027 min
 Response: 126486
 Conc: 1.12 ng/ml



#12 AR-1232-2

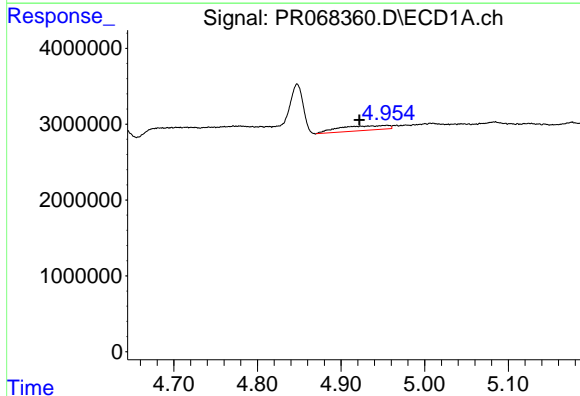
R.T.: 4.608 min
 Delta R.T.: -0.007 min
 Response: 6256654
 Conc: 270.51 ng/ml

Instrument :
 ECD_R
 ClientSampleId :



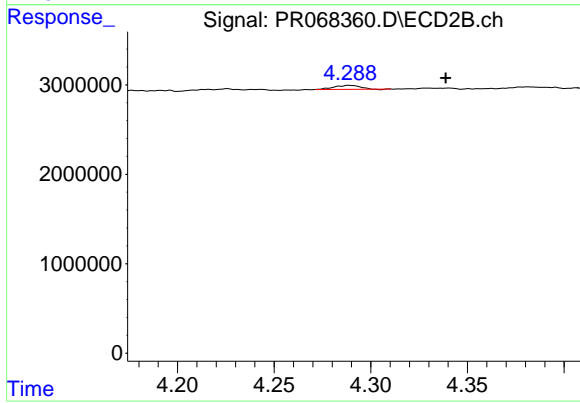
#12 AR-1232-2

R.T.: 4.106 min
 Delta R.T.: -0.052 min
 Response: 1010770
 Conc: 8.87 ng/ml



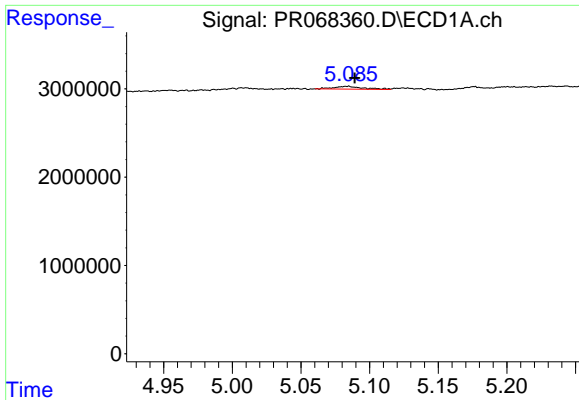
#13 AR-1232-3

R.T.: 4.955 min
 Delta R.T.: 0.033 min
 Response: 2568730
 Conc: 56.26 ng/ml



#13 AR-1232-3

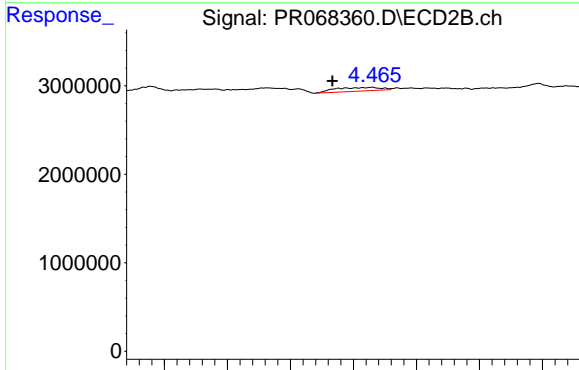
R.T.: 4.289 min
 Delta R.T.: -0.050 min
 Response: 419177
 Conc: 6.85 ng/ml



#14 AR-1232-4

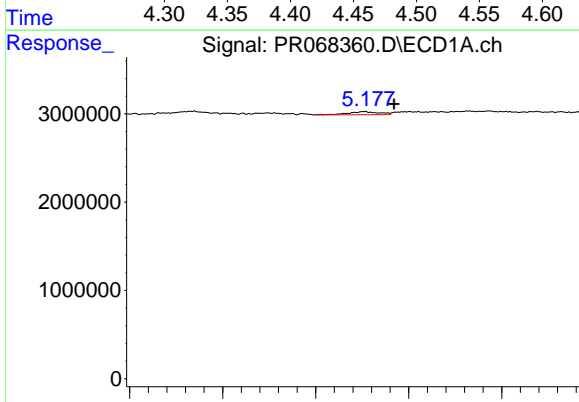
R.T.: 5.084 min
 Delta R.T.: -0.005 min
 Response: 480439
 Conc: 20.77 ng/ml

Instrument :
 ECD_R
 ClientSampleId :



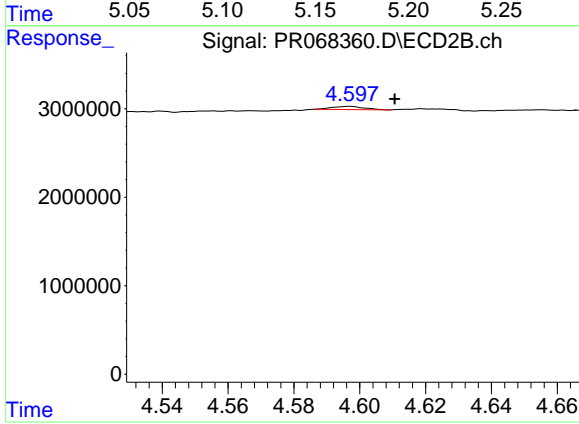
#14 AR-1232-4

R.T.: 4.465 min
 Delta R.T.: 0.031 min
 Response: 1067183
 Conc: 19.20 ng/ml



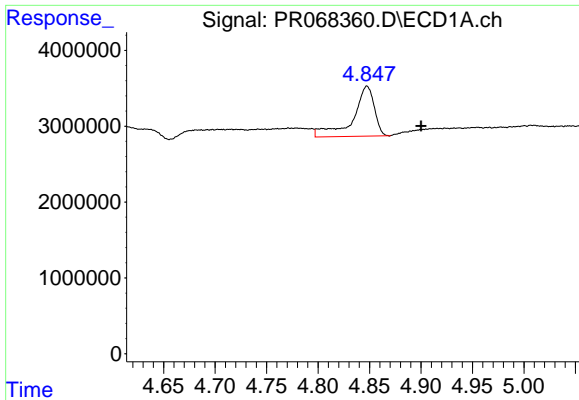
#15 AR-1232-5

R.T.: 5.176 min
 Delta R.T.: -0.016 min
 Response: 416043
 Conc: 38.40 ng/ml



#15 AR-1232-5

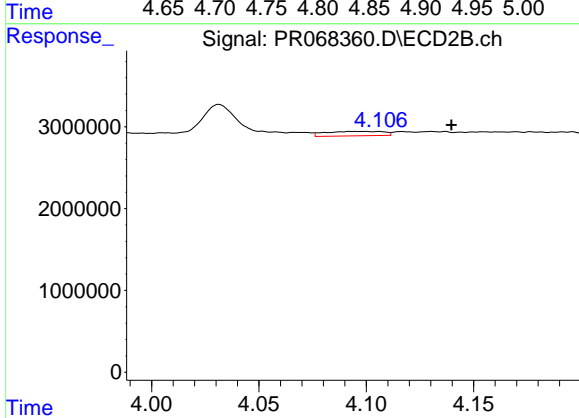
R.T.: 4.597 min
 Delta R.T.: -0.014 min
 Response: 239927
 Conc: 4.01 ng/ml



#16 AR-1242-1

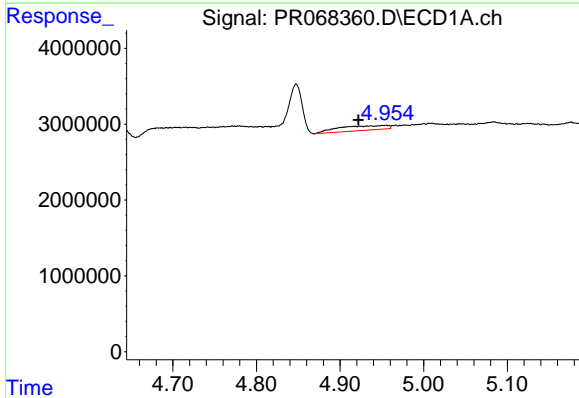
R.T.: 4.848 min
 Delta R.T.: -0.053 min
 Response: 9591096
 Conc: 216.38 ng/ml

Instrument :
 ECD_R
 ClientSampleId :



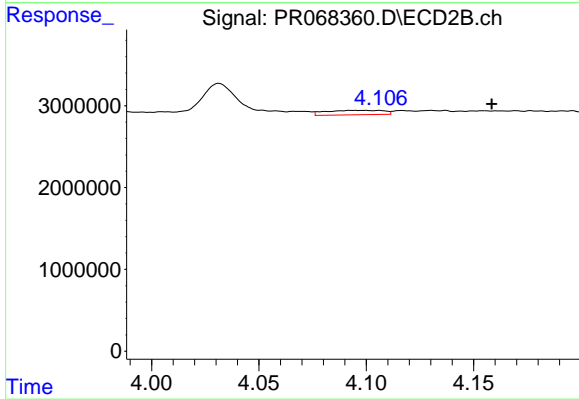
#16 AR-1242-1

R.T.: 4.106 min
 Delta R.T.: -0.034 min
 Response: 1010770
 Conc: 6.62 ng/ml



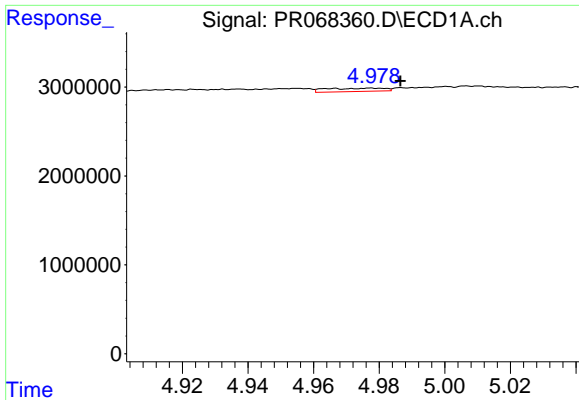
#17 AR-1242-2

R.T.: 4.955 min
 Delta R.T.: 0.033 min
 Response: 2568730
 Conc: 30.98 ng/ml



#17 AR-1242-2

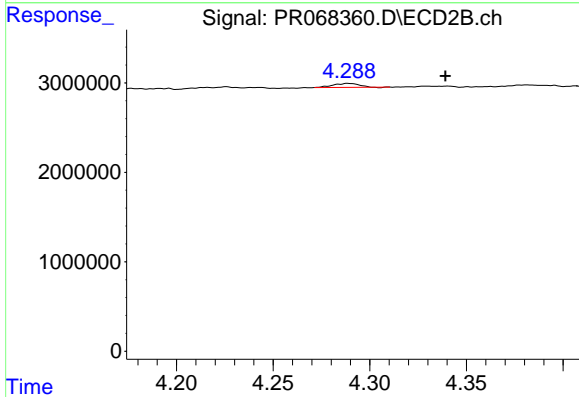
R.T.: 4.106 min
 Delta R.T.: -0.053 min
 Response: 1010770
 Conc: 4.76 ng/ml



#18 AR-1242-3

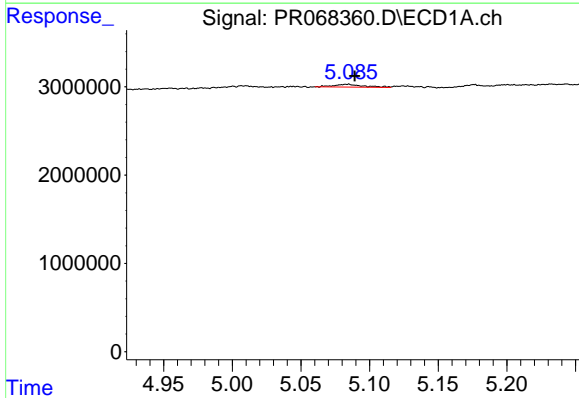
R.T.: 4.978 min
 Delta R.T.: -0.009 min
 Response: 456845
 Conc: 8.46 ng/ml

Instrument :
 ECD_R
 ClientSampleId :



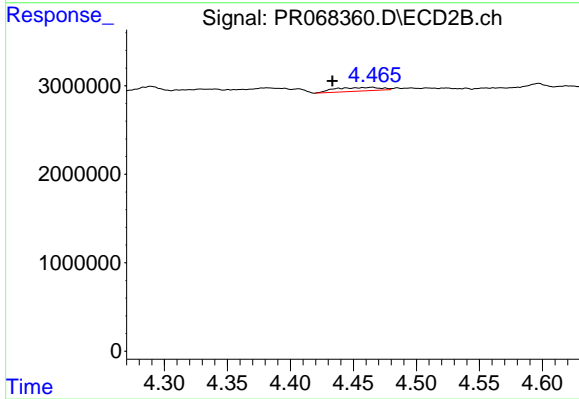
#18 AR-1242-3

R.T.: 4.289 min
 Delta R.T.: -0.050 min
 Response: 419177
 Conc: 3.62 ng/ml



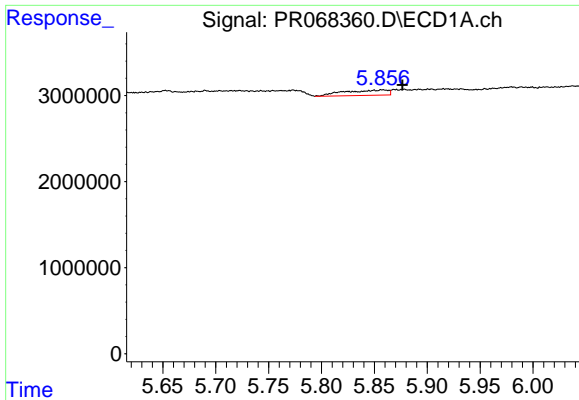
#19 AR-1242-4

R.T.: 5.084 min
 Delta R.T.: -0.005 min
 Response: 480439
 Conc: 10.54 ng/ml



#19 AR-1242-4

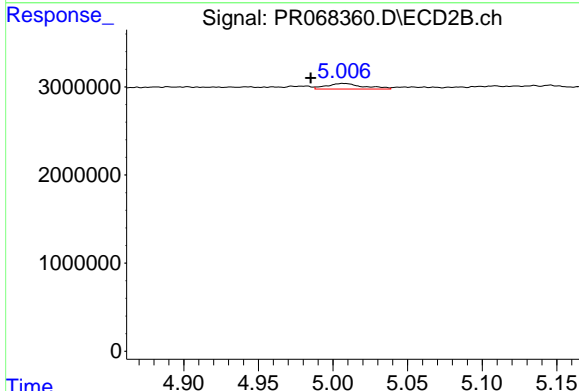
R.T.: 4.465 min
 Delta R.T.: 0.031 min
 Response: 1067183
 Conc: 9.26 ng/ml



#20 AR-1242-5

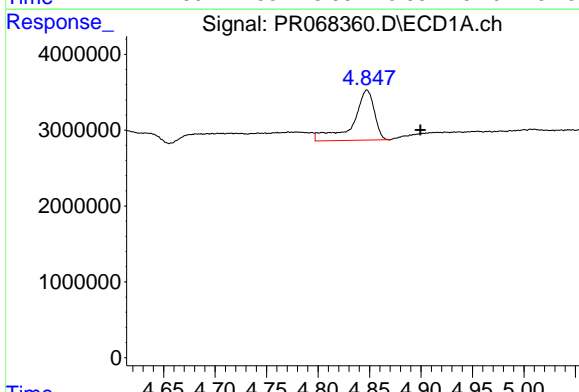
R.T.: 5.850 min
 Delta R.T.: -0.027 min
 Response: 1765502
 Conc: 37.29 ng/ml

Instrument :
 ECD_R
 ClientSampleId :



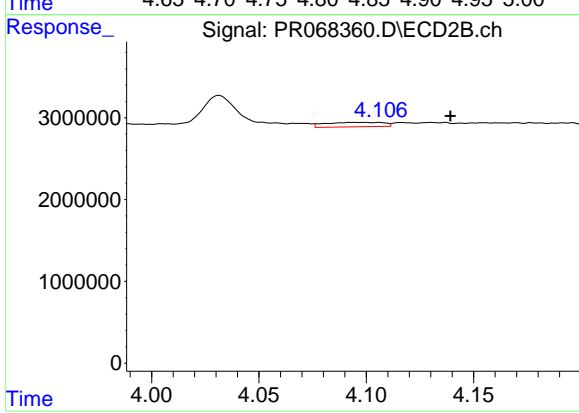
#20 AR-1242-5

R.T.: 5.007 min
 Delta R.T.: 0.022 min
 Response: 1098843
 Conc: 7.44 ng/ml



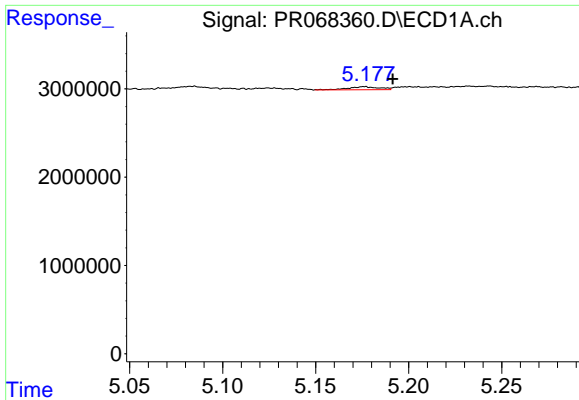
#21 AR-1248-1

R.T.: 4.848 min
 Delta R.T.: -0.052 min
 Response: 9591096
 Conc: 286.10 ng/ml



#21 AR-1248-1

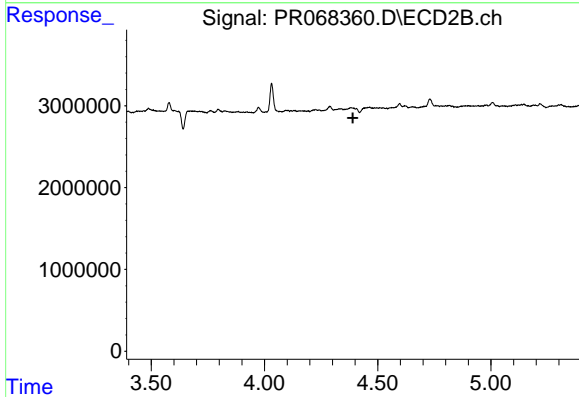
R.T.: 4.106 min
 Delta R.T.: -0.033 min
 Response: 1010770
 Conc: 9.00 ng/ml



#22 AR-1248-2

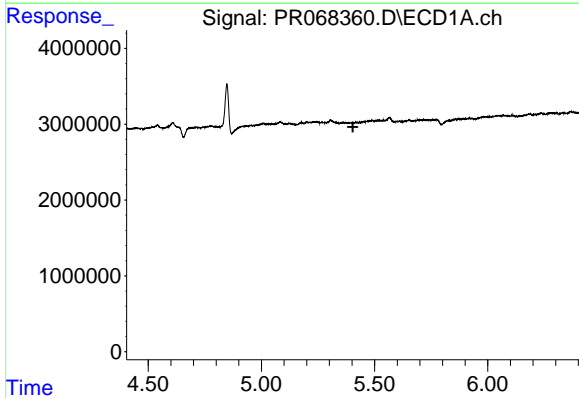
R.T.: 5.176 min
 Delta R.T.: -0.015 min
 Response: 416043
 Conc: 10.23 ng/ml

Instrument :
 ECD_R
 ClientSampleId :



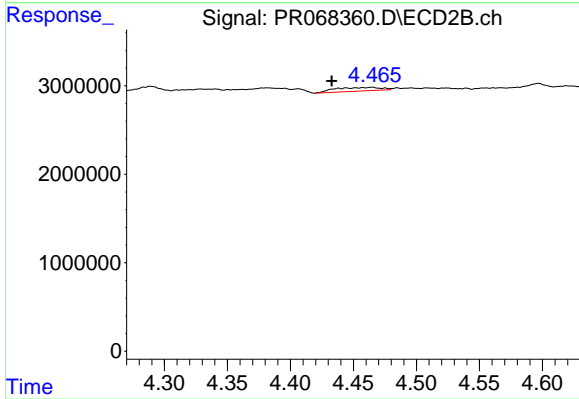
#22 AR-1248-2

R.T.: 0.000 min
 Exp R.T. : 4.390 min
 Response: 0
 Conc: N.D.



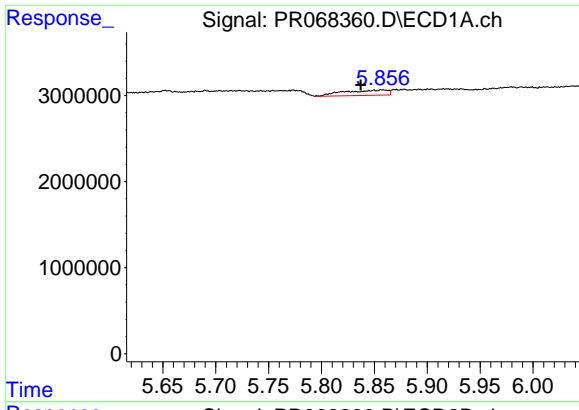
#23 AR-1248-3

R.T.: 0.000 min
 Exp R.T. : 5.404 min
 Response: 0
 Conc: N.D.



#23 AR-1248-3

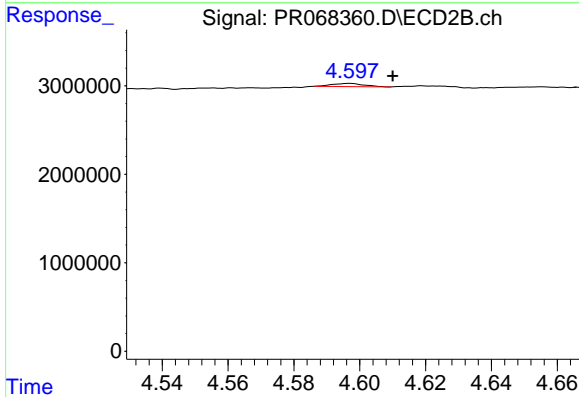
R.T.: 4.465 min
 Delta R.T.: 0.032 min
 Response: 1067183
 Conc: 6.30 ng/ml



#24 AR-1248-4

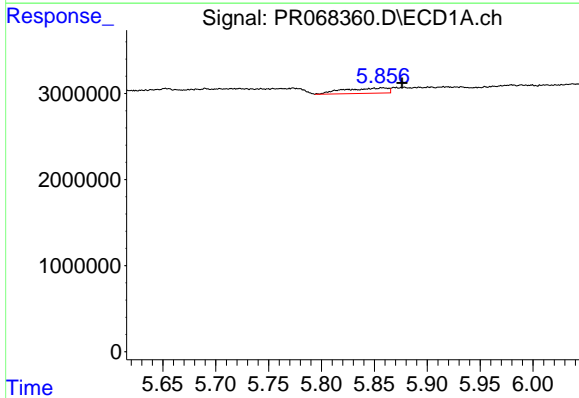
R.T.: 5.850 min
 Delta R.T.: 0.013 min
 Response: 1765502
 Conc: 25.91 ng/ml

Instrument :
 ECD_R
 ClientSampleId :



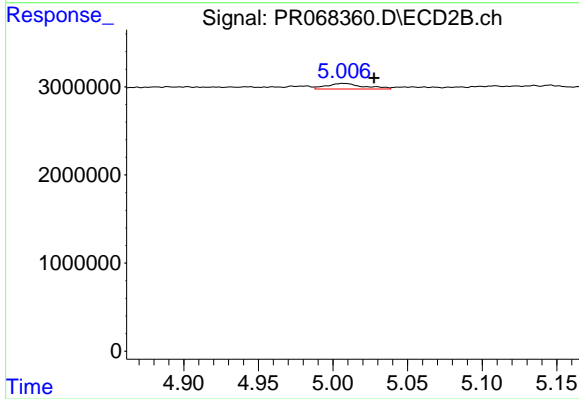
#24 AR-1248-4

R.T.: 4.597 min
 Delta R.T.: -0.013 min
 Response: 239927
 Conc: 1.18 ng/ml



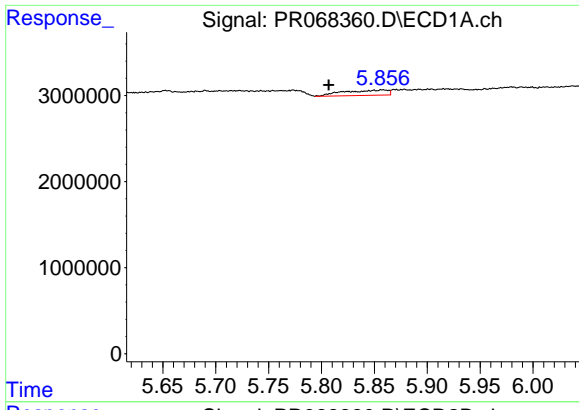
#25 AR-1248-5

R.T.: 5.850 min
 Delta R.T.: -0.026 min
 Response: 1765502
 Conc: 22.47 ng/ml



#25 AR-1248-5

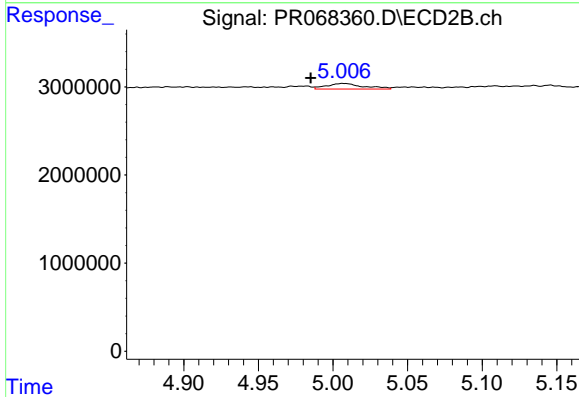
R.T.: 5.007 min
 Delta R.T.: -0.021 min
 Response: 1098843
 Conc: 5.50 ng/ml



#26 AR-1254-1

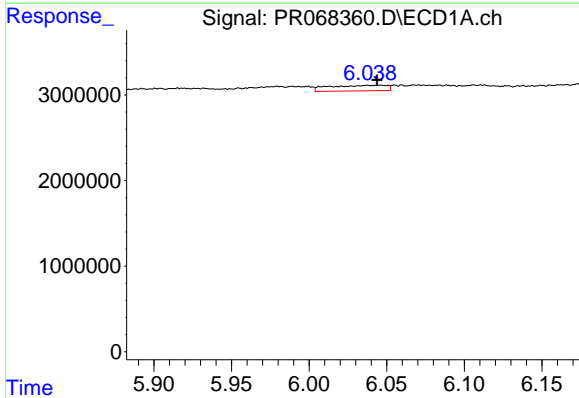
R.T.: 5.850 min
 Delta R.T.: 0.043 min
 Response: 1765502
 Conc: 29.39 ng/ml

Instrument :
 ECD_R
 ClientSampleId :



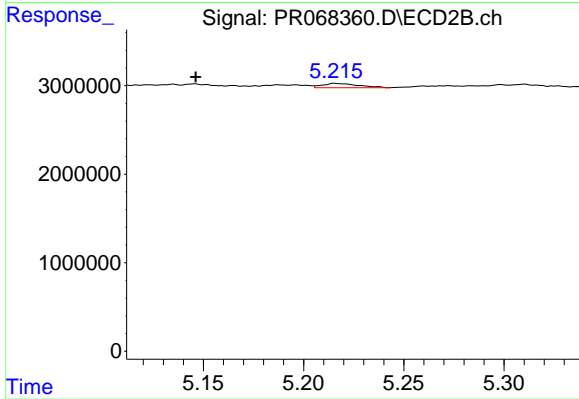
#26 AR-1254-1

R.T.: 5.007 min
 Delta R.T.: 0.022 min
 Response: 1098843
 Conc: 3.58 ng/ml



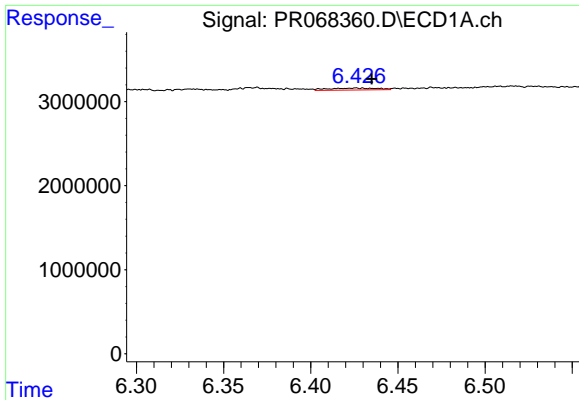
#27 AR-1254-2

R.T.: 6.046 min
 Delta R.T.: 0.002 min
 Response: 1668686
 Conc: 16.73 ng/ml



#27 AR-1254-2

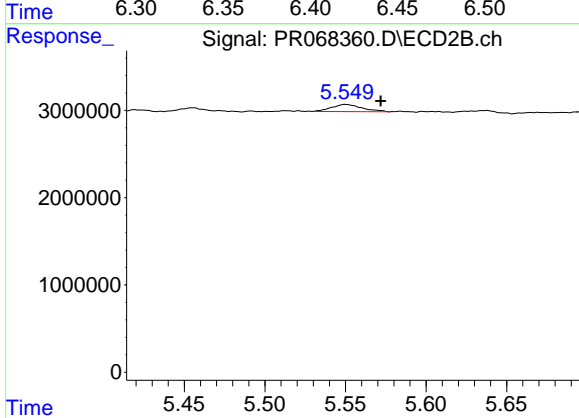
R.T.: 5.216 min
 Delta R.T.: 0.070 min
 Response: 624754
 Conc: 2.29 ng/ml



#28 AR-1254-3

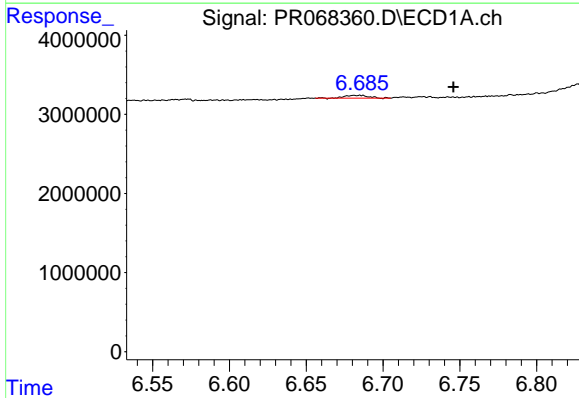
R.T.: 6.426 min
 Delta R.T.: -0.009 min
 Response: 449210
 Conc: 3.48 ng/ml

Instrument :
 ECD_R
 ClientSampleId :



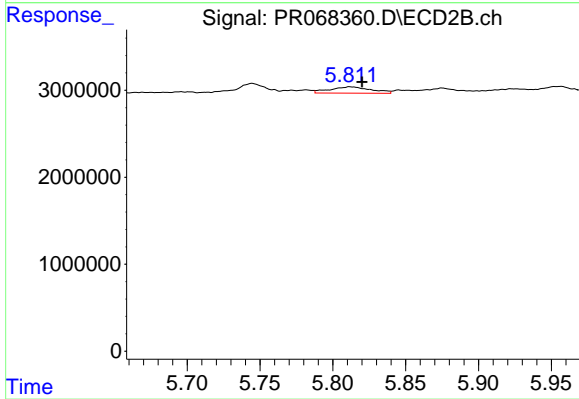
#28 AR-1254-3

R.T.: 5.550 min
 Delta R.T.: -0.022 min
 Response: 1070616
 Conc: 2.47 ng/ml



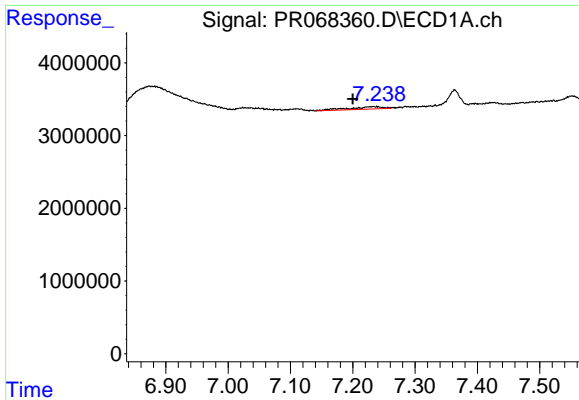
#29 AR-1254-4

R.T.: 6.685 min
 Delta R.T.: -0.061 min
 Response: 383054
 Conc: 3.43 ng/ml



#29 AR-1254-4

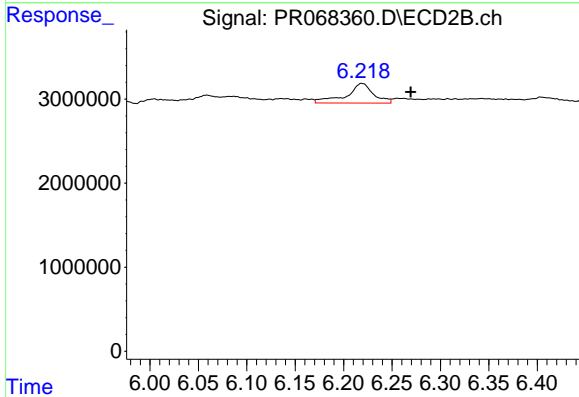
R.T.: 5.812 min
 Delta R.T.: -0.008 min
 Response: 1414630
 Conc: 5.32 ng/ml



#30 AR-1254-5

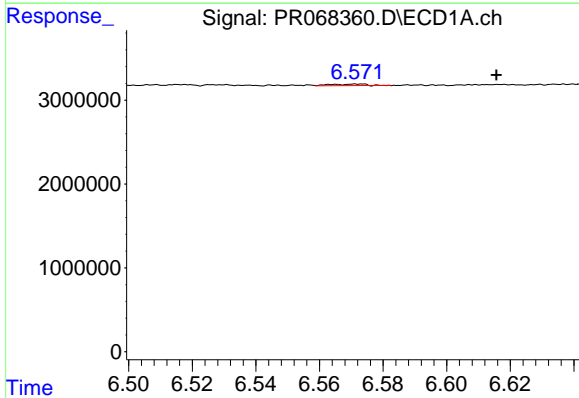
R.T.: 7.233 min
 Delta R.T.: 0.033 min
 Response: 1315301
 Conc: 10.48 ng/ml

Instrument :
 ECD_R
 ClientSampleId :



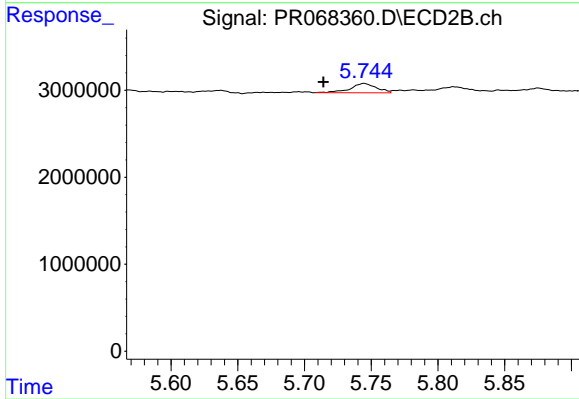
#30 AR-1254-5

R.T.: 6.219 min
 Delta R.T.: -0.051 min
 Response: 4565749
 Conc: 11.59 ng/ml



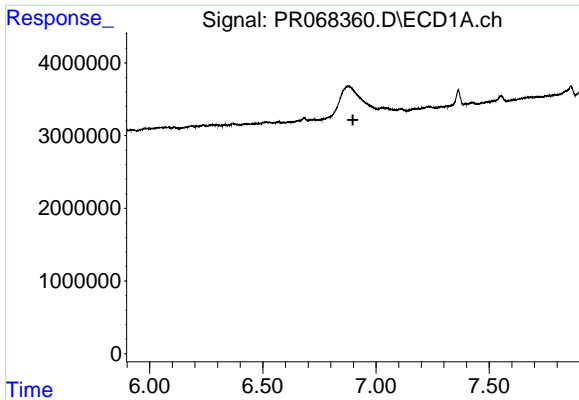
#31 AR-1260-1

R.T.: 6.572 min
 Delta R.T.: -0.044 min
 Response: 151541
 Conc: 1.89 ng/ml



#31 AR-1260-1

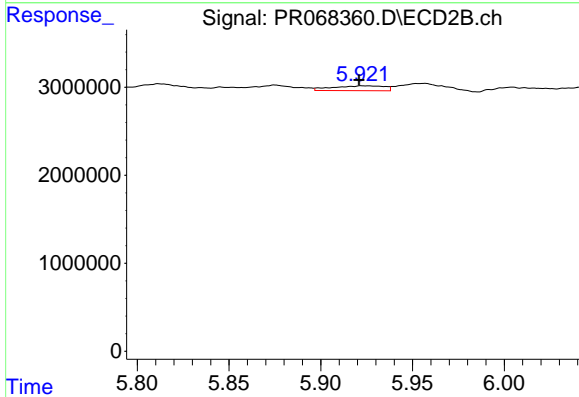
R.T.: 5.745 min
 Delta R.T.: 0.030 min
 Response: 1473373
 Conc: 4.84 ng/ml



#32 AR-1260-2

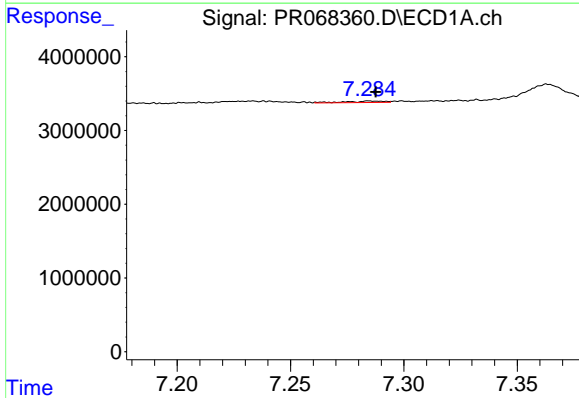
R.T.: 0.000 min
 Exp R.T.: 6.898 min
 Response: 0
 Conc: N.D.

Instrument :
 ECD_R
 ClientSampleId :



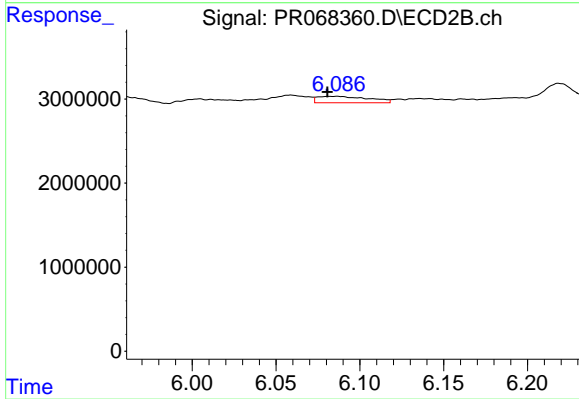
#32 AR-1260-2

R.T.: 5.923 min
 Delta R.T.: 0.002 min
 Response: 1083198
 Conc: 2.93 ng/ml



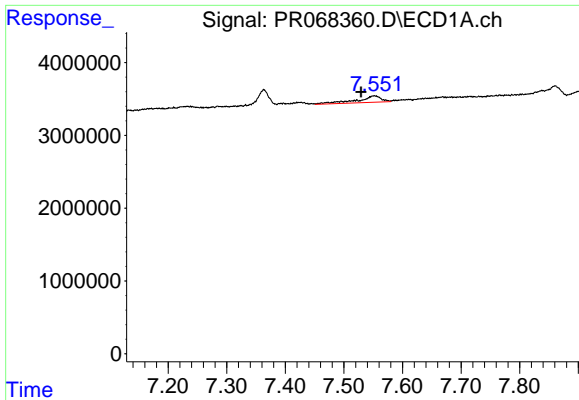
#33 AR-1260-3

R.T.: 7.285 min
 Delta R.T.: -0.003 min
 Response: 223748
 Conc: 1.36 ng/ml



#33 AR-1260-3

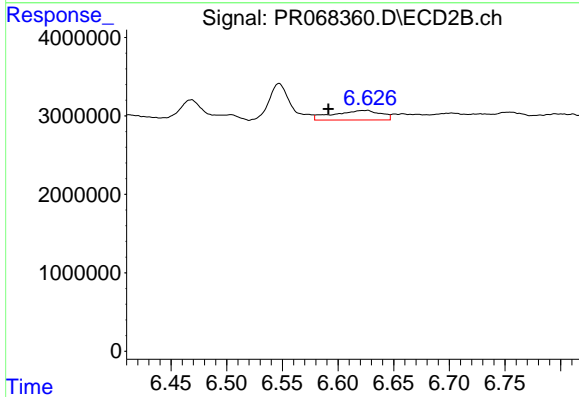
R.T.: 6.087 min
 Delta R.T.: 0.006 min
 Response: 1622865
 Conc: 4.75 ng/ml



#34 AR-1260-4

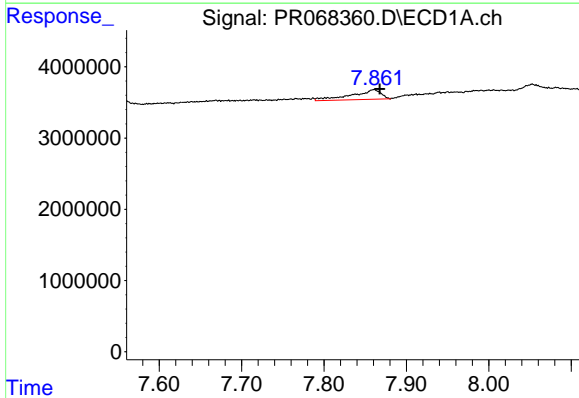
R.T.: 7.552 min
 Delta R.T.: 0.023 min
 Response: 2500212
 Conc: 18.50 ng/ml

Instrument :
 ECD_R
 ClientSampleId :



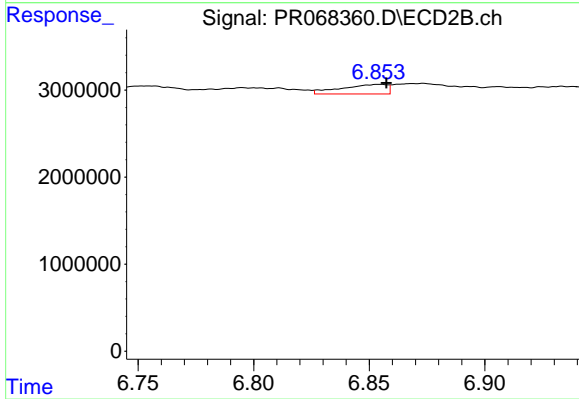
#34 AR-1260-4

R.T.: 6.626 min
 Delta R.T.: 0.035 min
 Response: 3598868
 Conc: 12.21 ng/ml



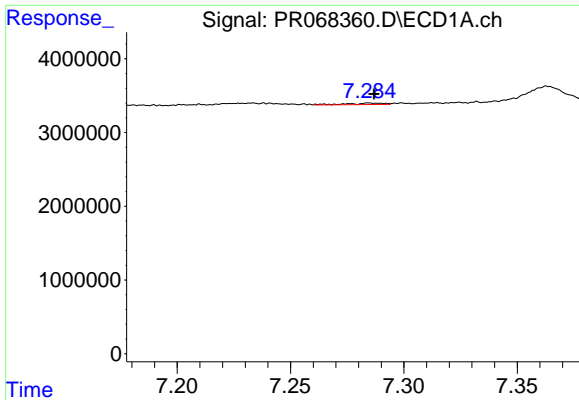
#35 AR-1260-5

R.T.: 7.860 min
 Delta R.T.: -0.007 min
 Response: 3394868
 Conc: 7.24 ng/ml



#35 AR-1260-5

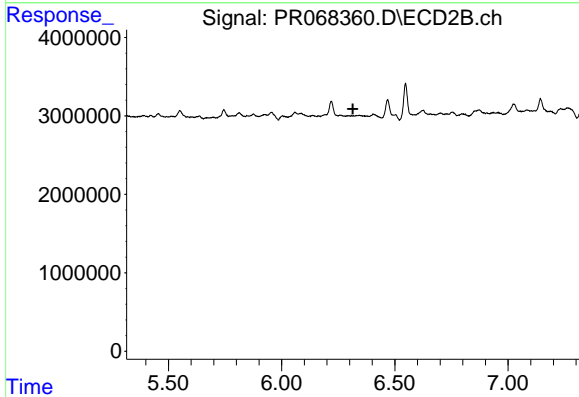
R.T.: 6.855 min
 Delta R.T.: -0.003 min
 Response: 1532421
 Conc: 2.28 ng/ml



#36 AR-1262-1

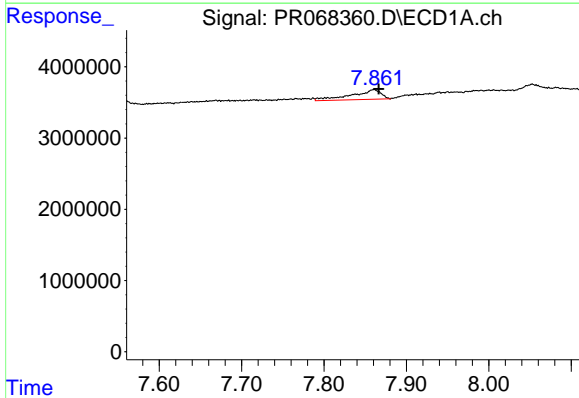
R.T.: 7.285 min
 Delta R.T.: -0.002 min
 Response: 223748
 Conc: 0.96 ng/ml

Instrument :
 ECD_R
 ClientSampleId :



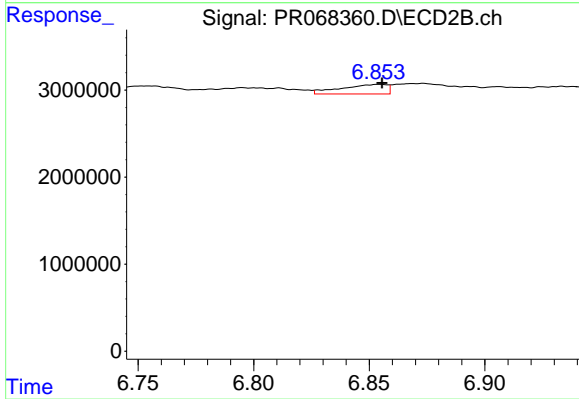
#36 AR-1262-1

R.T.: 0.000 min
 Exp R.T. : 6.315 min
 Response: 0
 Conc: N.D.



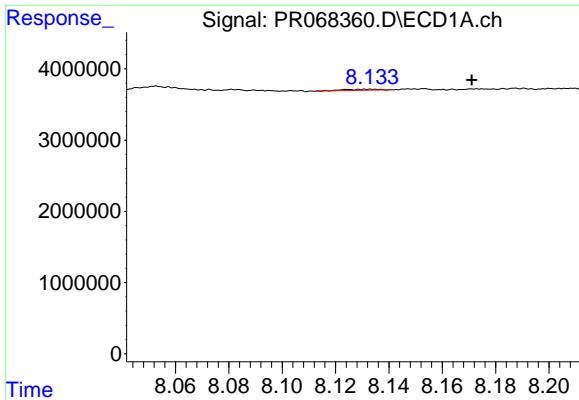
#37 AR-1262-2

R.T.: 7.860 min
 Delta R.T.: -0.006 min
 Response: 3394868
 Conc: 6.55 ng/ml



#37 AR-1262-2

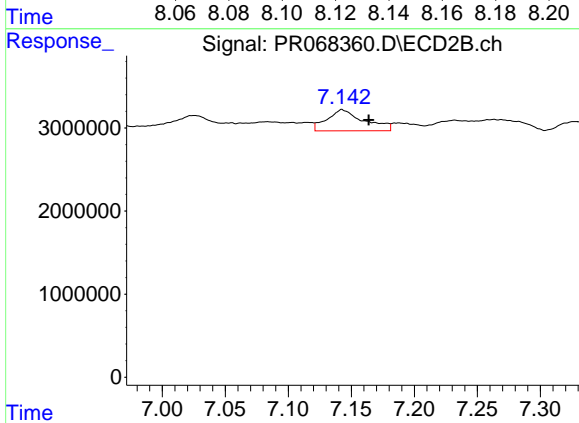
R.T.: 6.855 min
 Delta R.T.: -0.001 min
 Response: 1532421
 Conc: 2.10 ng/ml



#38 AR-1262-3

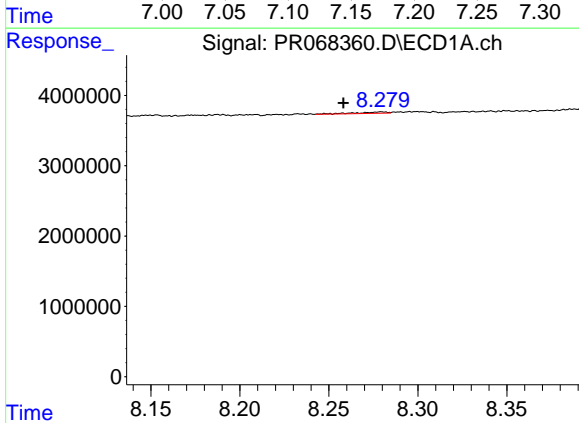
R.T.: 8.133 min
 Delta R.T.: -0.038 min
 Response: 293176
 Conc: 0.83 ng/ml

Instrument :
 ECD_R
 ClientSampleId :



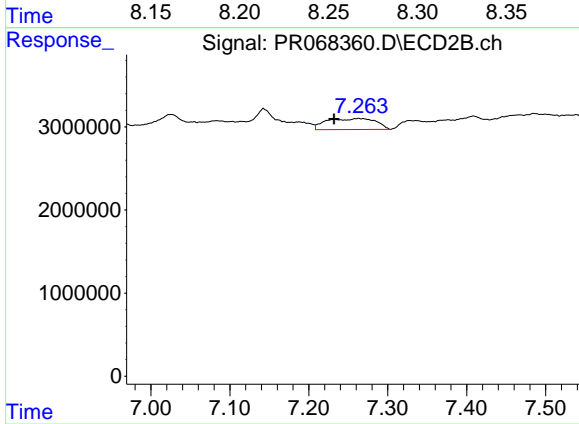
#38 AR-1262-3

R.T.: 7.143 min
 Delta R.T.: -0.021 min
 Response: 5215818
 Conc: 17.78 ng/ml



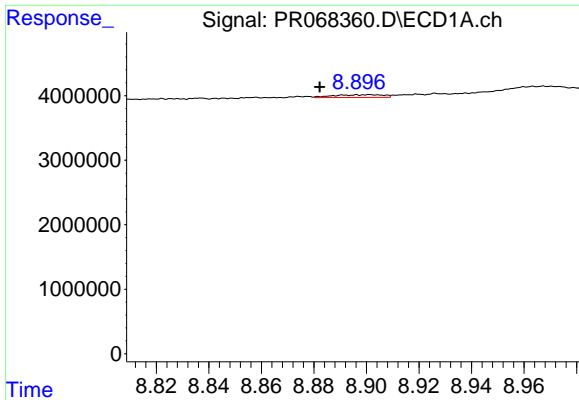
#39 AR-1262-4

R.T.: 8.280 min
 Delta R.T.: 0.022 min
 Response: 242744
 Conc: 0.81 ng/ml



#39 AR-1262-4

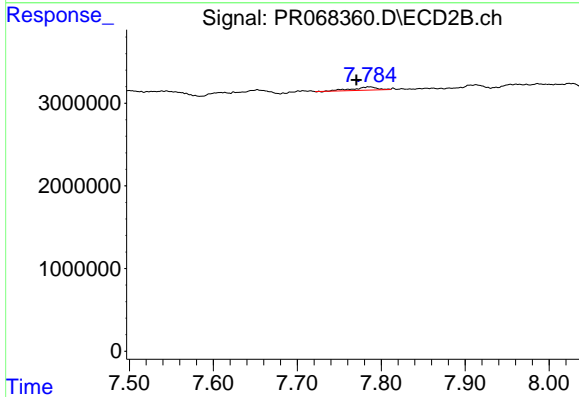
R.T.: 7.263 min
 Delta R.T.: 0.031 min
 Response: 5742593
 Conc: 10.57 ng/ml



#40 AR-1262-5

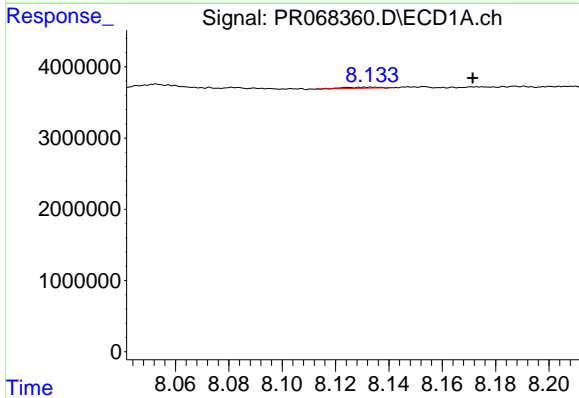
R.T.: 8.901 min
 Delta R.T.: 0.019 min
 Response: 570763
 Conc: 2.65 ng/ml

Instrument :
 ECD_R
 ClientSampleId :



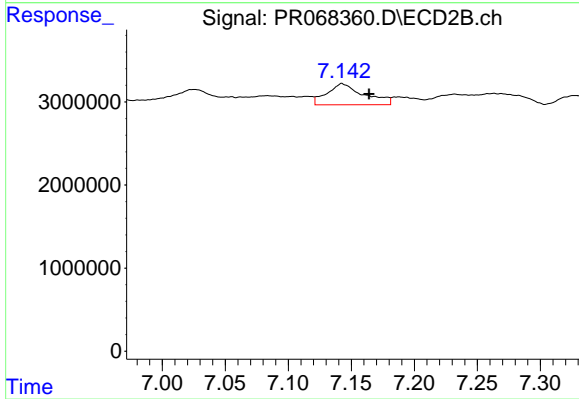
#40 AR-1262-5

R.T.: 7.786 min
 Delta R.T.: 0.016 min
 Response: 775125
 Conc: 3.09 ng/ml



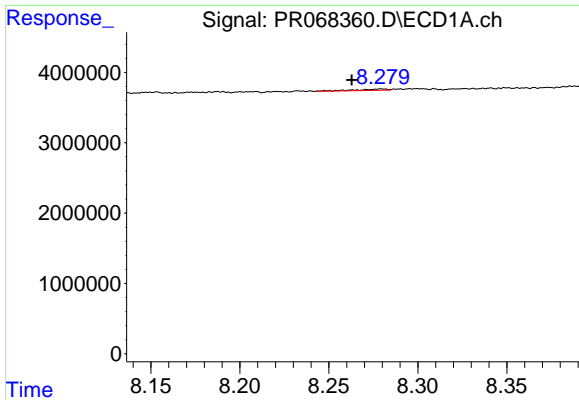
#41 AR-1268-1

R.T.: 8.133 min
 Delta R.T.: -0.038 min
 Response: 293176
 Conc: 0.38 ng/ml



#41 AR-1268-1

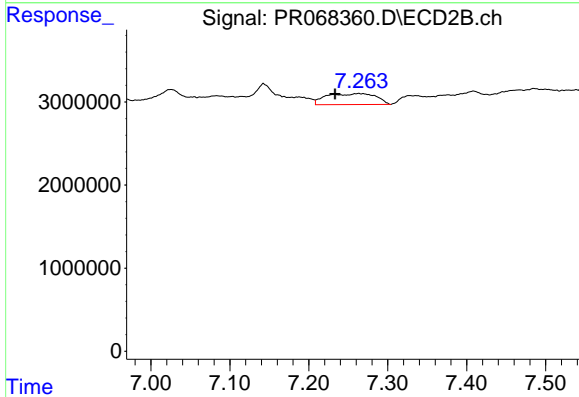
R.T.: 7.143 min
 Delta R.T.: -0.021 min
 Response: 5215818
 Conc: 5.79 ng/ml



#42 AR-1268-2

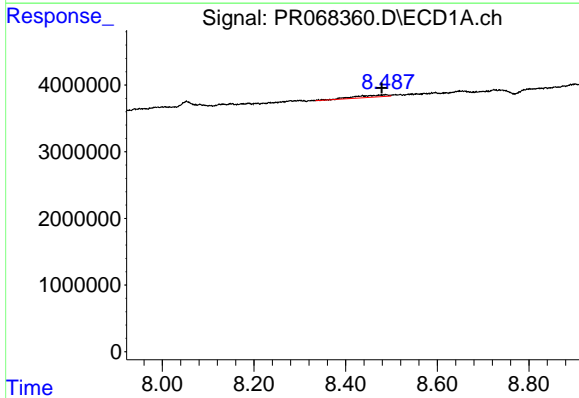
R.T.: 8.280 min
 Delta R.T.: 0.017 min
 Response: 242744
 Conc: 0.35 ng/ml

Instrument :
 ECD_R
 ClientSampleId :



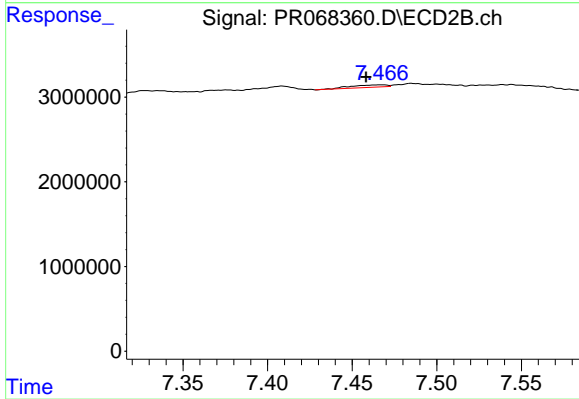
#42 AR-1268-2

R.T.: 7.263 min
 Delta R.T.: 0.030 min
 Response: 5742593
 Conc: 6.97 ng/ml



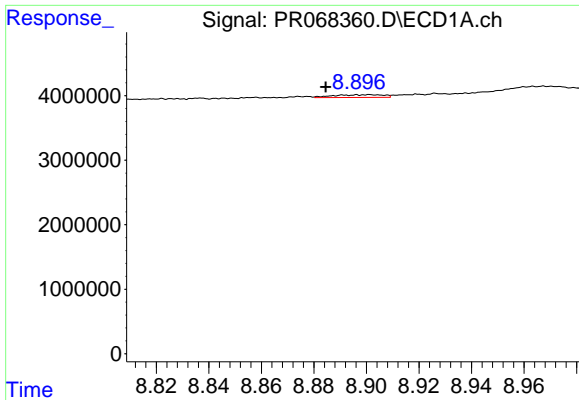
#43 AR-1268-3

R.T.: 8.488 min
 Delta R.T.: 0.009 min
 Response: 1594011
 Conc: 2.45 ng/ml



#43 AR-1268-3

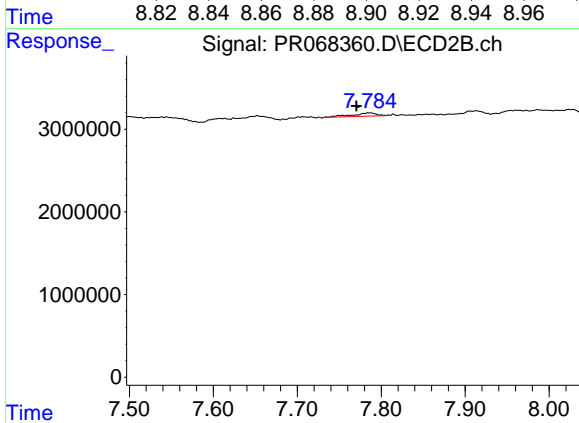
R.T.: 7.467 min
 Delta R.T.: 0.009 min
 Response: 401117
 Conc: 0.58 ng/ml



#44 AR-1268-4

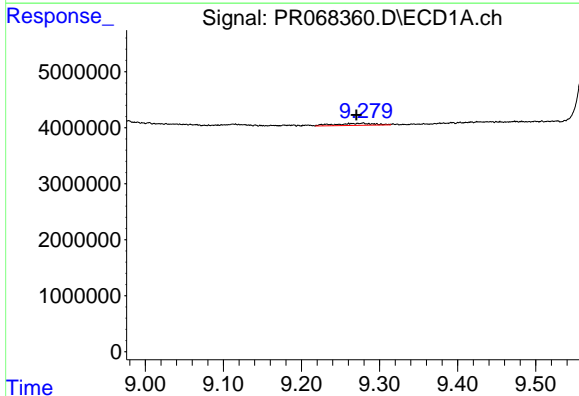
R.T.: 8.901 min
 Delta R.T.: 0.017 min
 Response: 570763
 Conc: 2.25 ng/ml

Instrument :
 ECD_R
 ClientSampleId :



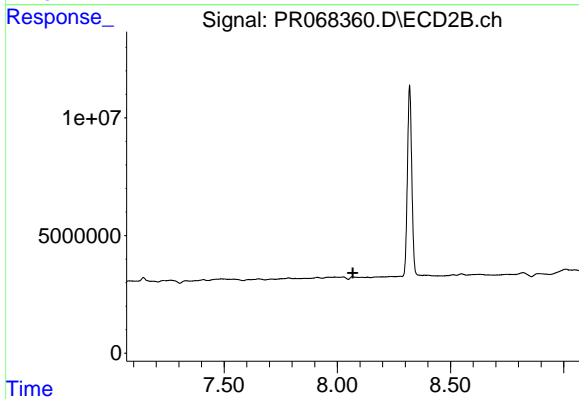
#44 AR-1268-4

R.T.: 7.786 min
 Delta R.T.: 0.016 min
 Response: 775125
 Conc: 2.58 ng/ml



#45 AR-1268-5

R.T.: 9.279 min
 Delta R.T.: 0.009 min
 Response: 1284905
 Conc: 0.69 ng/ml



#45 AR-1268-5

R.T.: 8.067 min
 Delta R.T.: -0.001 min
 Response: -620198
 Conc: N.D.