

Data Path : Z:\pestpcbsrv\HPCHEM1\ECD_R\Data\PR082318\
 Data File : PR031553.D
 Signal(s) : Signal #1: ECD1A.ch Signal #2: ECD2B.ch
 Acq On : 23 Aug 2018 07:59
 Operator : SM\SJ
 Sample : I.BLK
 Misc :
 ALS Vial : 2 Sample Multiplier: 1

Instrument :
 ECD_R
 ClientSampleId :
 I.BLK

Integration File signal 1: autoint1.e
 Integration File signal 2: autoint2.e
 Quant Time: Aug 24 09:22:39 2018
 Quant Method : Z:\pestpcbsrv\HPCHEM1\ECD_R\Method\PR082318.M
 Quant Title : GC EXTRACTABLES
 QLast Update : Fri Aug 24 09:16:01 2018
 Response via : Initial Calibration
 Integrator: ChemStation

Volume Inj. : 2 µl
 Signal #1 Phase : ZB-MR1 Signal #2 Phase: ZB-MR2
 Signal #1 Info : 30Mx0.32mmx 0.50µ Signal #2 Info : 30M x 0.32mm x 0.25µm

Compound	RT#1	RT#2	Resp#1	Resp#2	ng/ml	ng/ml

System Monitoring Compounds						
1) SA Tetrachlo...	4.552	3.673	398.6E6	709.7E6	18.225	18.500
2) SA Decachlor...	10.329	8.554	739.4E6	484.3E6	23.825	23.834

Target Compounds

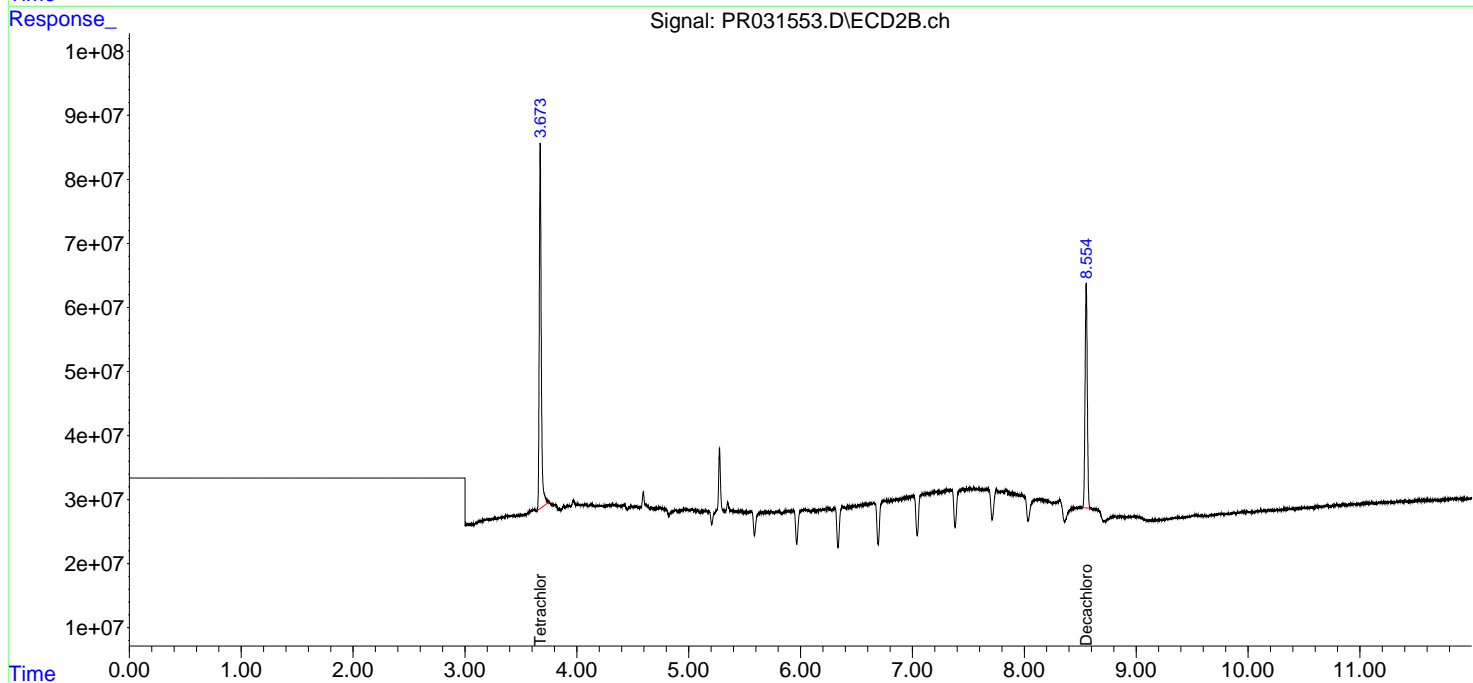
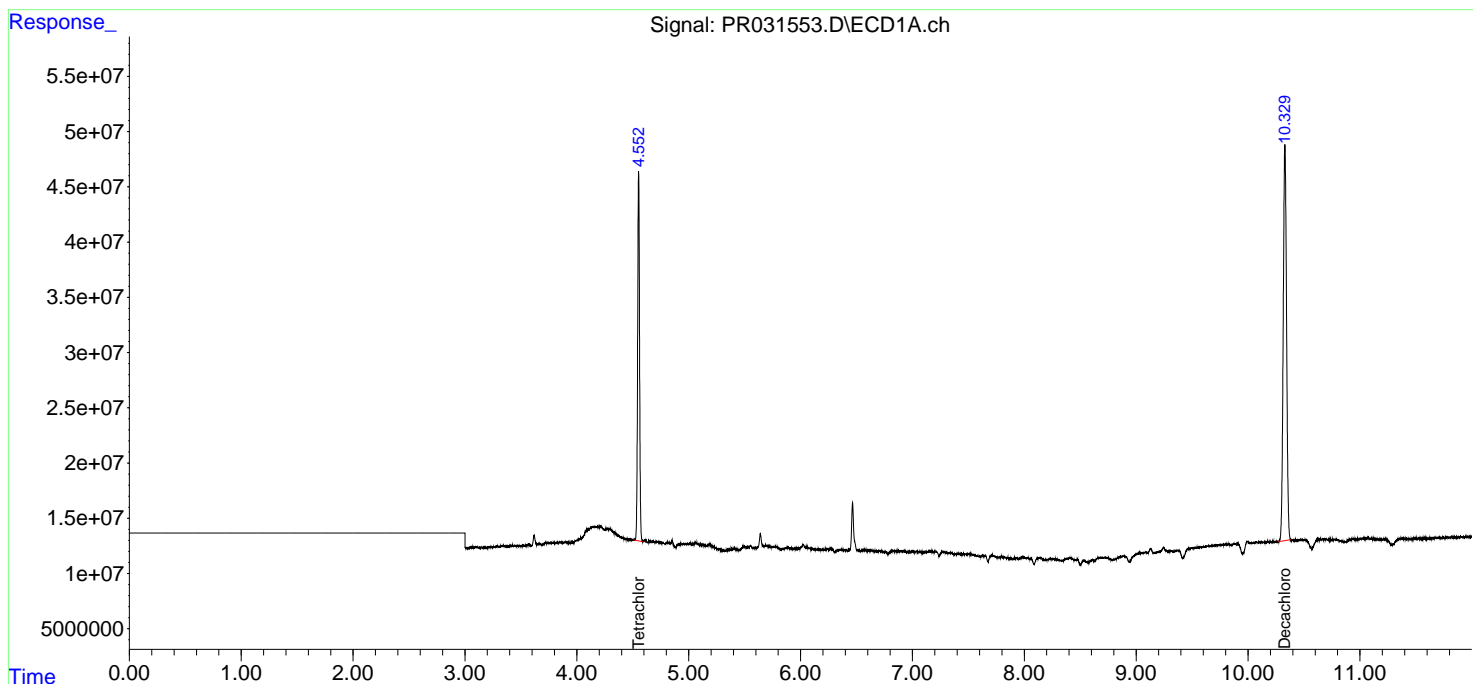
(f)=RT Delta > 1/2 Window (#)=Amounts differ by > 25% (m)=manual int.

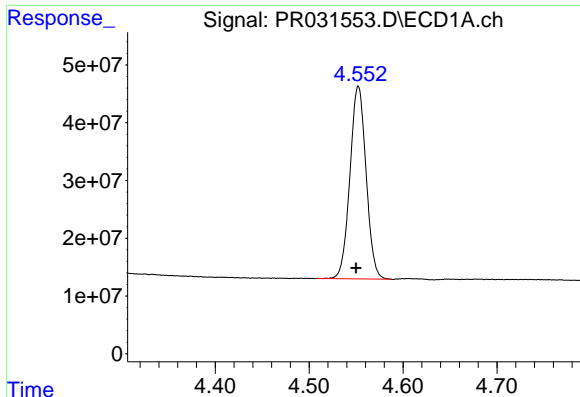
Data Path : Z:\pestpcbsrv\HPCHEM1\ECD_R\Data\PR082318\
 Data File : PR031553.D
 Signal(s) : Signal #1: ECD1A.ch Signal #2: ECD2B.ch
 Acq On : 23 Aug 2018 07:59
 Operator : SM\SJ
 Sample : I.BLK
 Misc :
 ALS Vial : 2 Sample Multiplier: 1

Instrument :
 ECD_R
 ClientSampled :
 I.BLK

Integration File signal 1: autoint1.e
 Integration File signal 2: autoint2.e
 Quant Time: Aug 24 09:22:39 2018
 Quant Method : Z:\pestpcbsrv\HPCHEM1\ECD_R\Method\PR082318.M
 Quant Title : GC EXTRACTABLES
 QLast Update : Fri Aug 24 09:16:01 2018
 Response via : Initial Calibration
 Integrator: ChemStation

Volume Inj. : 2 µl
 Signal #1 Phase : ZB-MR1 Signal #2 Phase: ZB-MR2
 Signal #1 Info : 30Mx0.32mmx 0.50µ Signal #2 Info : 30M x 0.32mm x 0.25µm

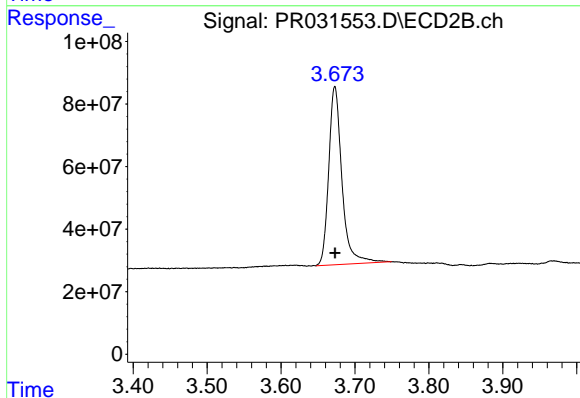




#1 Tetrachloro-m-xylene

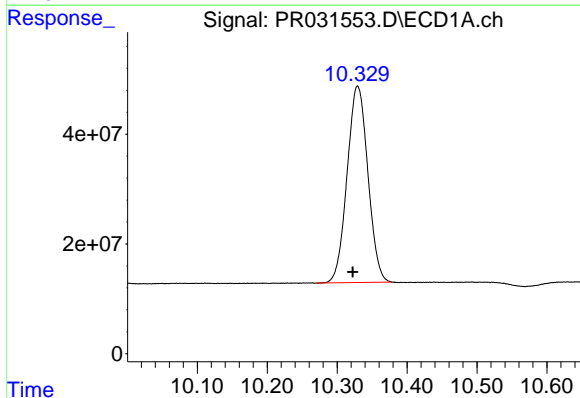
R.T.: 4.552 min
 Delta R.T.: 0.002 min
 Response: 398571927
 Conc: 18.23 ng/ml

Instrument :
 ECD_R
 ClientSampleId :
 I.BLK



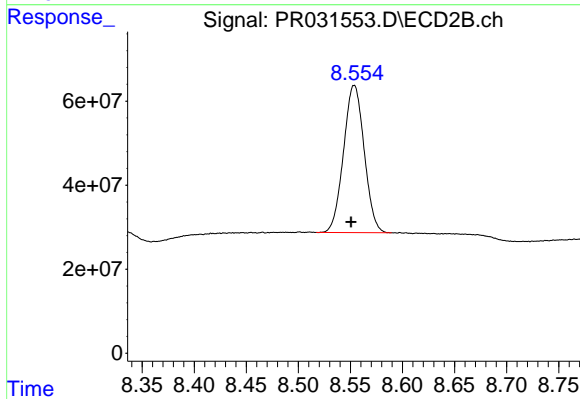
#1 Tetrachloro-m-xylene

R.T.: 3.673 min
 Delta R.T.: 0.000 min
 Response: 709726367
 Conc: 18.50 ng/ml



#2 Decachlorobiphenyl

R.T.: 10.329 min
 Delta R.T.: 0.007 min
 Response: 739425119
 Conc: 23.82 ng/ml



#2 Decachlorobiphenyl

R.T.: 8.554 min
 Delta R.T.: 0.003 min
 Response: 484332597
 Conc: 23.83 ng/ml