

Data Path : Z:\pestpcbsrv\HPCHEM1\ECD_R\Data\PR082318\
 Data File : PR031555.D
 Signal(s) : Signal #1: ECD1A.ch Signal #2: ECD2B.ch
 Acq On : 23 Aug 2018 08:28
 Operator : SM\SJ
 Sample : AR1660ICC750
 Misc :
 ALS Vial : 42 Sample Multiplier: 1

Instrument :
 ECD_R
 ClientSampleId :
 AR1660ICC750

Manual Integrations
 APPROVED

Sohil
 8/27/2018 3:29:58 PM

Integration File signal 1: autoint1.e
 Integration File signal 2: autoint2.e
 Quant Time: Aug 24 08:38:45 2018
 Quant Method : Z:\pestpcbsrv\HPCHEM1\ECD_R\Method\PR082318.M
 Quant Title : GC EXTRACTABLES
 QLast Update : Fri Aug 24 08:33:26 2018
 Response via : Initial Calibration
 Integrator: ChemStation

Volume Inj. : 2 µl
 Signal #1 Phase : ZB-MR1 Signal #2 Phase: ZB-MR2
 Signal #1 Info : 30Mx0.32mmx 0.50µ Signal #2 Info : 30M x 0.32mm x 0.25µm

Compound	RT#1	RT#2	Resp#1	Resp#2	ng/ml	ng/ml

System Monitoring Compounds						
1) SA Tetrachlo...	4.551	3.673	1640.1E6	2879.8E6	73.627	73.153
2) SA Decachlor...	10.324	8.551	2074.9E6	1343.2E6	71.782	72.624
Target Compounds						
3) L1 AR-1016-1	5.251	4.327	413.5E6	789.2E6	763.977	716.826
4) L1 AR-1016-2	5.445	4.728	424.7E6	1160.7E6	735.781	704.863
5) L1 AR-1016-3	5.710	4.744	660.4E6	2054.3E6	720.930	722.734m
6) L1 AR-1016-4	5.796	4.802	572.1E6	1249.1E6	724.599	714.408
7) L1 AR-1016-5	6.187	5.166	490.8E6	1118.2E6	716.367	715.662
31) L7 AR-1260-1	7.310	6.172	1073.7E6	2220.2E6	720.468	721.073
32) L7 AR-1260-2	7.564	6.357	1436.7E6	2656.7E6	720.840	718.927
33) L7 AR-1260-3	7.847	6.507	1592.6E6	2170.1E6	756.020	719.881
34) L7 AR-1260-4	8.152	6.968	1108.1E6	1253.1E6	722.769	716.183
35) L7 AR-1260-5	8.477	7.209	2552.8E6	2540.5E6	717.087	720.981

(f)=RT Delta > 1/2 Window (#)=Amounts differ by > 25% (m)=manual int.

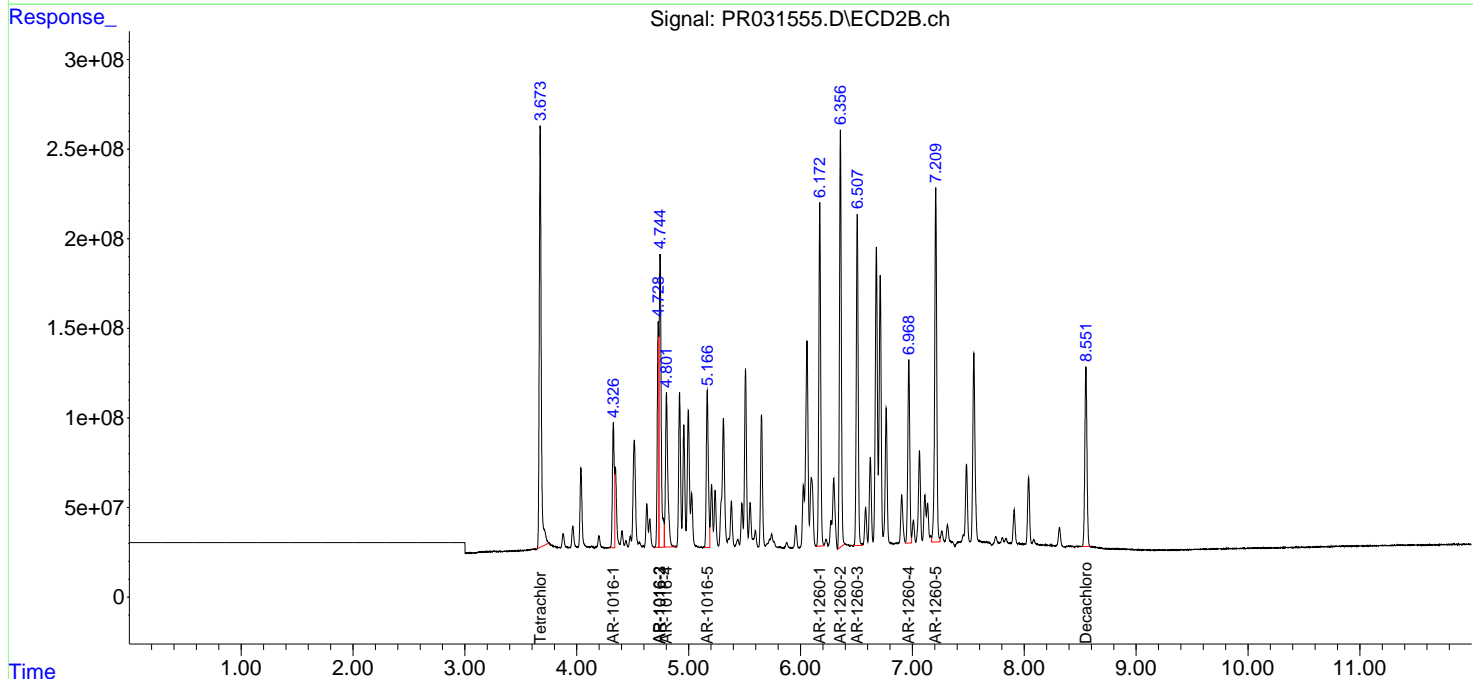
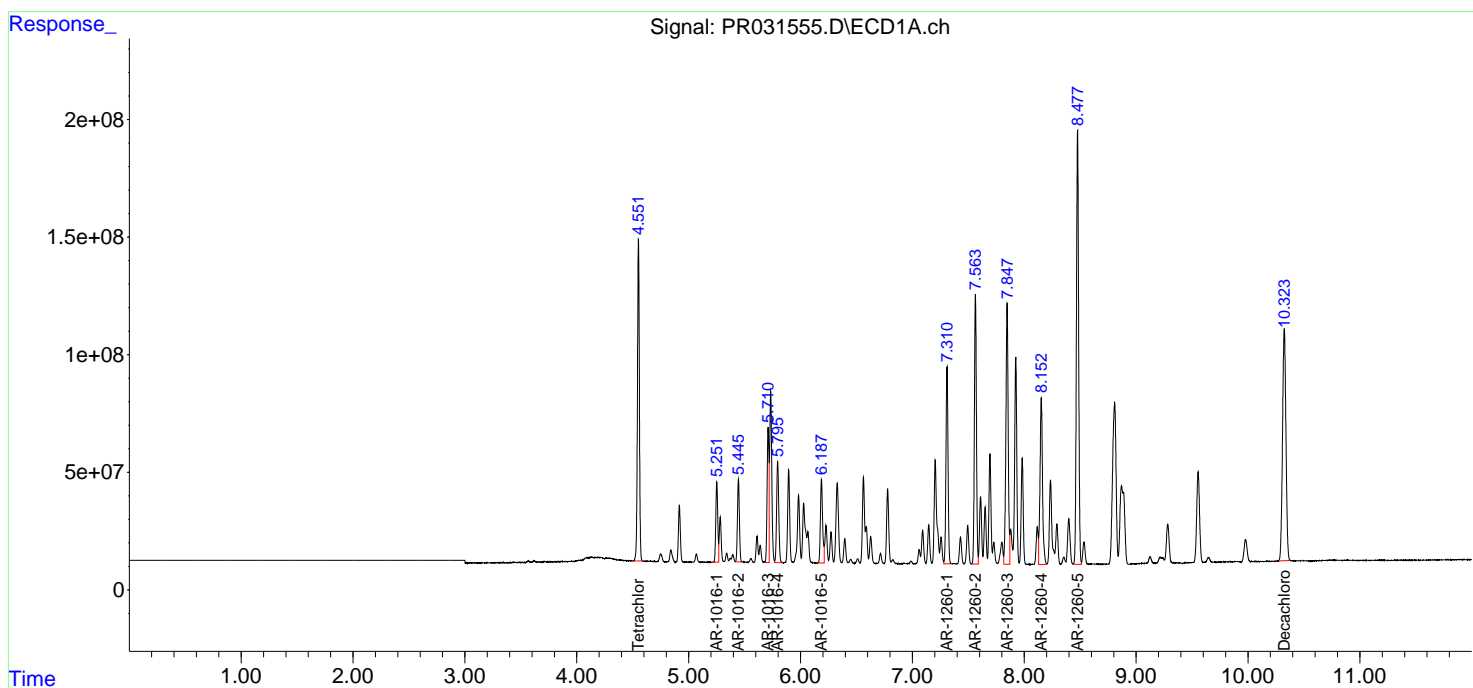
Data Path : Z:\pestpcbsrv\HPCHEM1\ECD_R\Data\PR082318\
 Data File : PR031555.D
 Signal(s) : Signal #1: ECD1A.ch Signal #2: ECD2B.ch
 Acq On : 23 Aug 2018 08:28
 Operator : SM\SJ
 Sample : AR1660ICC750
 Misc :
 ALS Vial : 42 Sample Multiplier: 1

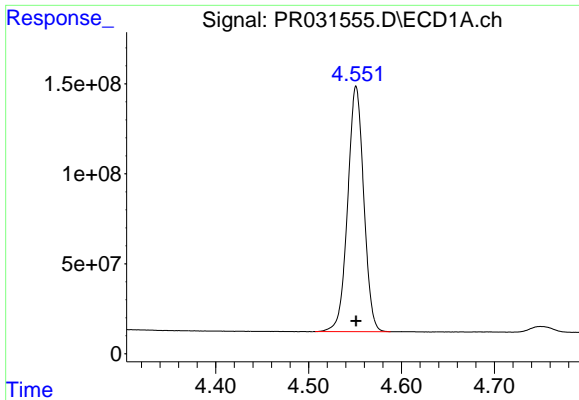
Instrument :
 ECD_R
Client Sampled :
 AR1660ICC750

Manual Integrations
APPROVED
 Sohil
 8/27/2018 3:29:58 PM

Integration File signal 1: autoint1.e
 Integration File signal 2: autoint2.e
 Quant Time: Aug 24 08:38:45 2018
 Quant Method : Z:\pestpcbsrv\HPCHEM1\ECD_R\Method\PR082318.M
 Quant Title : GC EXTRACTABLES
 QLast Update : Fri Aug 24 08:33:26 2018
 Response via : Initial Calibration
 Integrator: ChemStation

Volume Inj. : 2 µl
 Signal #1 Phase : ZB-MR1 Signal #2 Phase: ZB-MR2
 Signal #1 Info : 30Mx0.32mmx 0.50µ Signal #2 Info : 30M x 0.32mm x 0.25µm





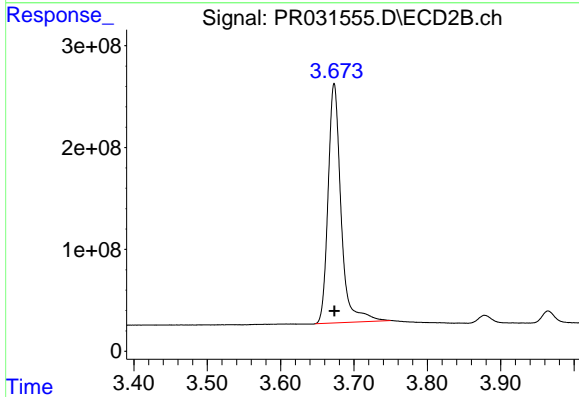
#1 Tetrachloro-m-xylene

R.T.: 4.551 min
 Delta R.T.: 0.000 min
 Response: 1640118356
 Conc: 73.63 ng/ml

Instrument :
 ECD_R
 ClientSampleId :
 AR1660ICC750

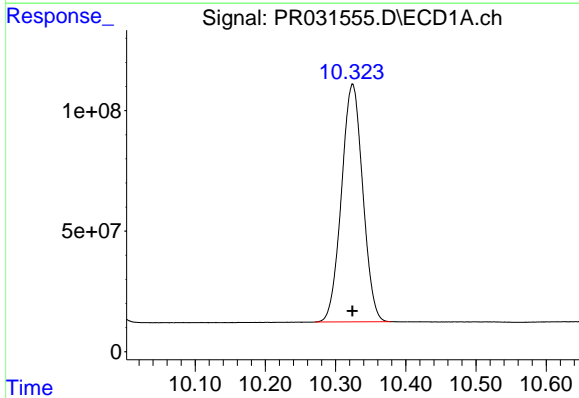
Manual Integrations
 APPROVED

Sohil
 8/27/2018 3:29:58 PM



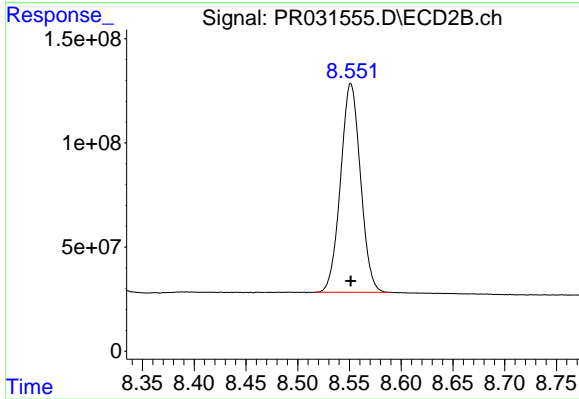
#1 Tetrachloro-m-xylene

R.T.: 3.673 min
 Delta R.T.: 0.000 min
 Response: 2879801444
 Conc: 73.15 ng/ml



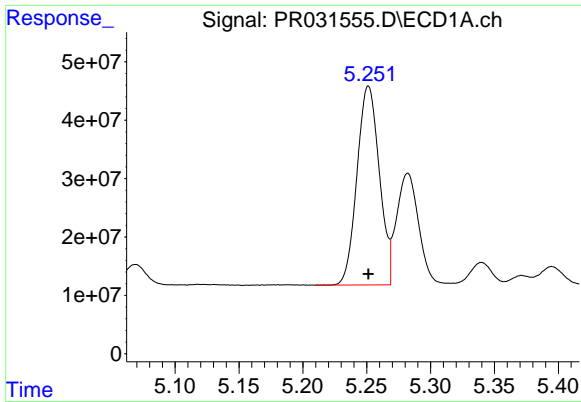
#2 Decachlorobiphenyl

R.T.: 10.324 min
 Delta R.T.: 0.000 min
 Response: 2074866035
 Conc: 71.78 ng/ml



#2 Decachlorobiphenyl

R.T.: 8.551 min
 Delta R.T.: 0.000 min
 Response: 1343217706
 Conc: 72.62 ng/ml



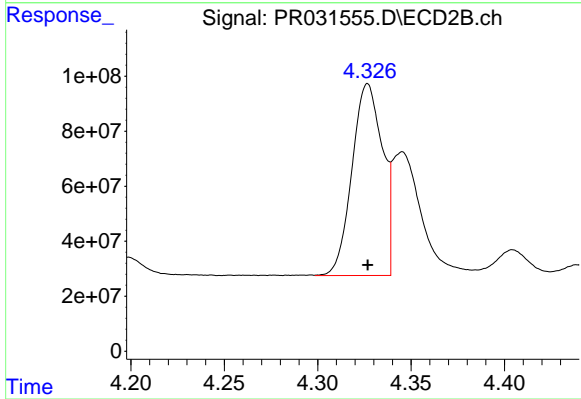
#3 AR-1016-1

R.T.: 5.251 min
 Delta R.T.: 0.000 min
 Response: 413483599
 Conc: 763.98 ng/ml

Instrument :
 ECD_R
 ClientSampled :
 AR1660ICC750

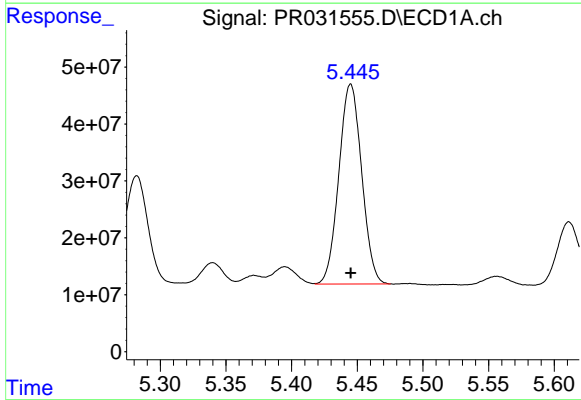
Manual Integrations
 APPROVED

Sohil
 8/27/2018 3:29:58 PM



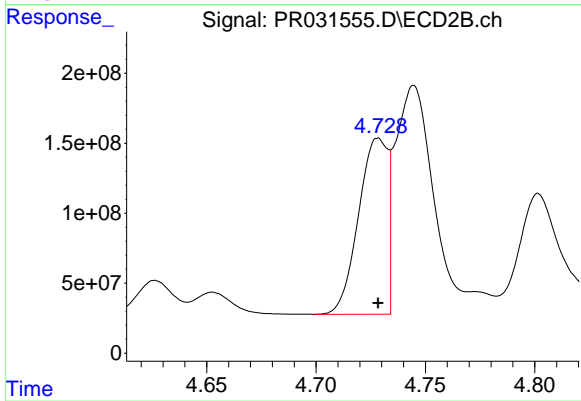
#3 AR-1016-1

R.T.: 4.327 min
 Delta R.T.: 0.000 min
 Response: 789206868
 Conc: 716.83 ng/ml



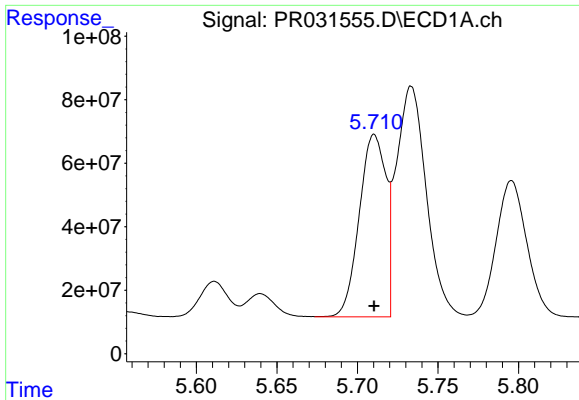
#4 AR-1016-2

R.T.: 5.445 min
 Delta R.T.: 0.000 min
 Response: 424667839
 Conc: 735.78 ng/ml



#4 AR-1016-2

R.T.: 4.728 min
 Delta R.T.: 0.000 min
 Response: 1160726694
 Conc: 704.86 ng/ml



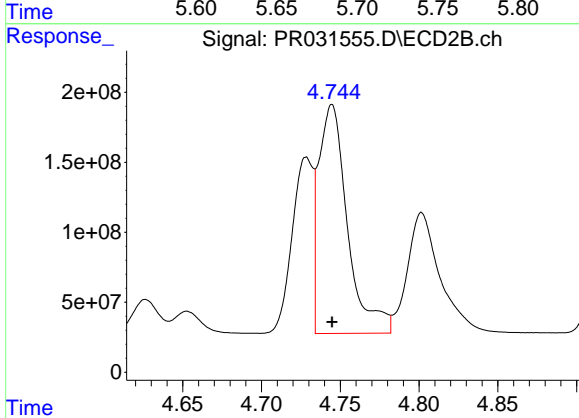
#5 AR-1016-3

R.T.: 5.710 min
 Delta R.T.: 0.000 min
 Response: 660380511
 Conc: 720.93 ng/ml

Instrument :
 ECD_R
 ClientSampled :
 AR1660ICC750

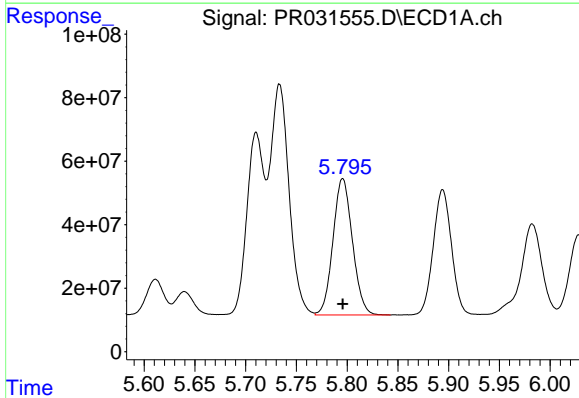
Manual Integrations
 APPROVED

Sohil
 8/27/2018 3:29:58 PM



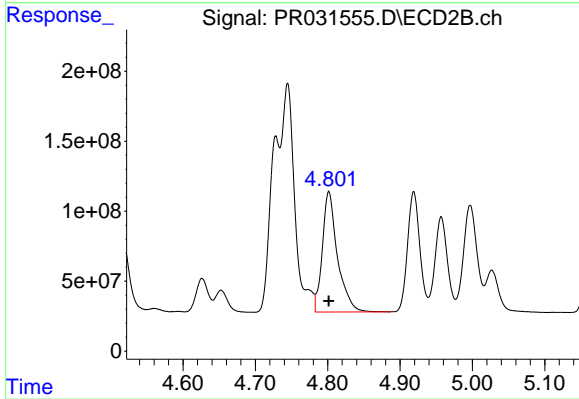
#5 AR-1016-3

R.T.: 4.744 min
 Delta R.T.: 0.000 min
 Response: 2054270864
 Conc: 722.73 ng/ml m



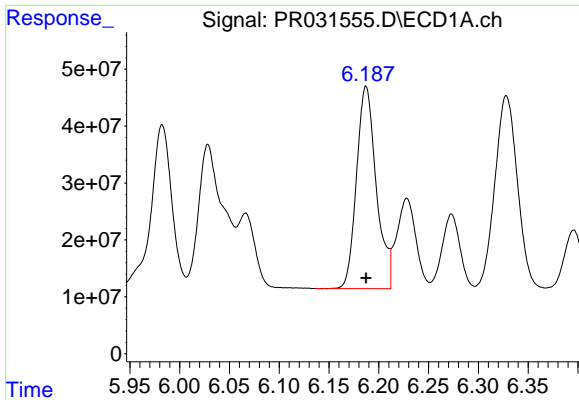
#6 AR-1016-4

R.T.: 5.796 min
 Delta R.T.: 0.000 min
 Response: 572129244
 Conc: 724.60 ng/ml



#6 AR-1016-4

R.T.: 4.802 min
 Delta R.T.: 0.000 min
 Response: 1249084583
 Conc: 714.41 ng/ml

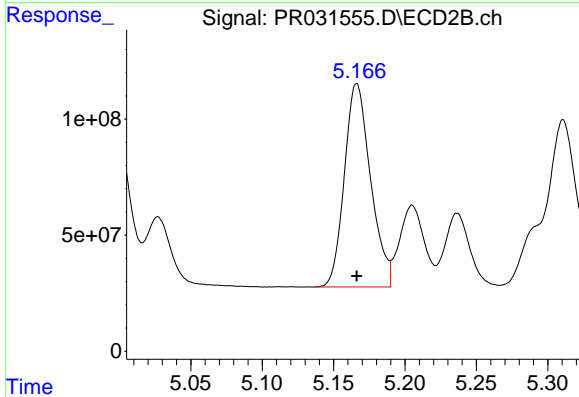


#7 AR-1016-5

R.T.: 6.187 min
 Delta R.T.: 0.000 min
 Response: 490835723
 Conc: 716.37 ng/ml

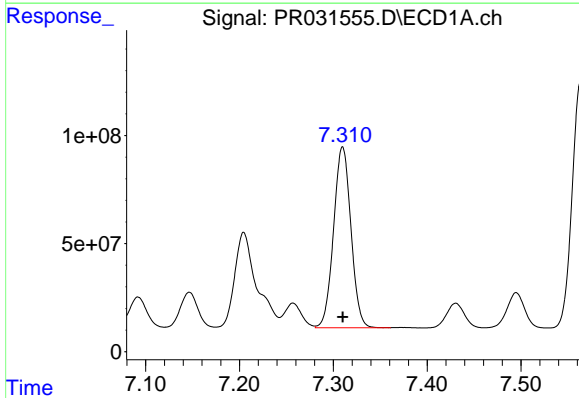
Instrument :
 ECD_R
 ClientSampled :
 AR1660ICC750

Manual Integrations
 APPROVED
 Sohil
 8/27/2018 3:29:58 PM



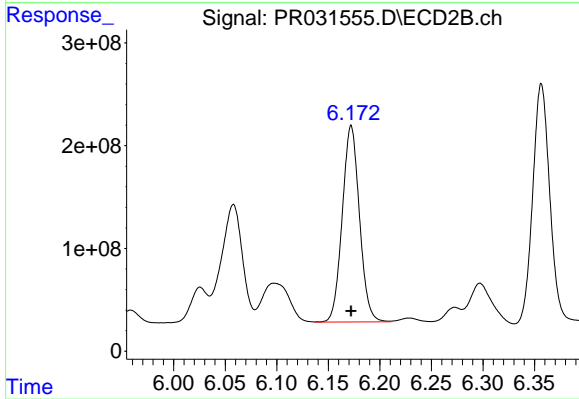
#7 AR-1016-5

R.T.: 5.166 min
 Delta R.T.: 0.000 min
 Response: 1118214296
 Conc: 715.66 ng/ml



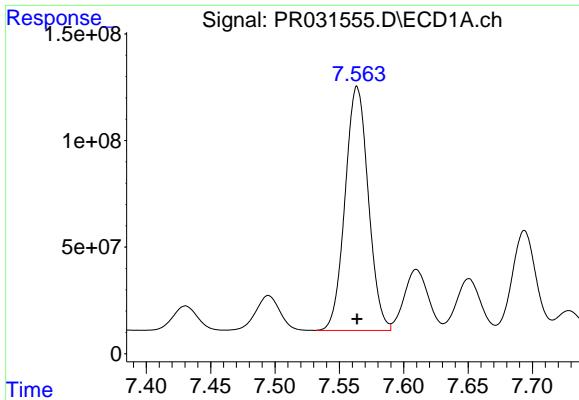
#31 AR-1260-1

R.T.: 7.310 min
 Delta R.T.: 0.000 min
 Response: 1073661877
 Conc: 720.47 ng/ml



#31 AR-1260-1

R.T.: 6.172 min
 Delta R.T.: 0.000 min
 Response: 2220164443
 Conc: 721.07 ng/ml

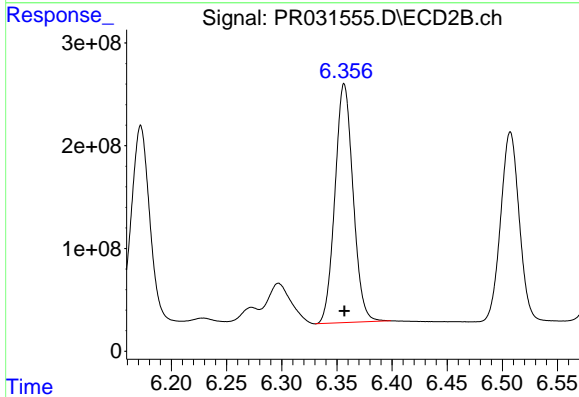


#32 AR-1260-2

R.T.: 7.564 min
 Delta R.T.: 0.000 min
 Response: 1436749376
 Conc: 720.84 ng/ml

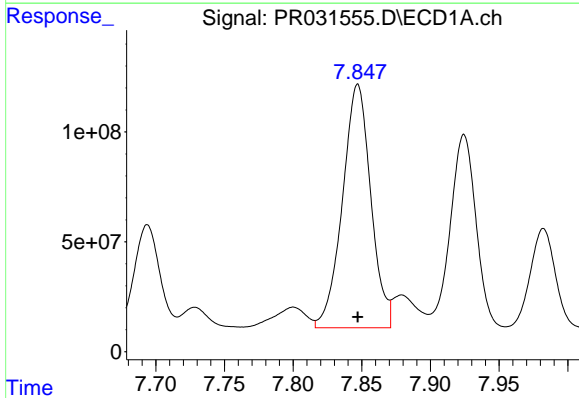
Instrument :
 ECD_R
ClientSampled :
 AR1660ICC750

Manual Integrations
APPROVED
 Sohil
 8/27/2018 3:29:58 PM



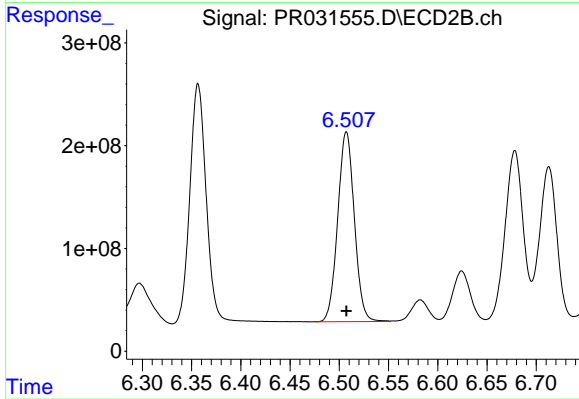
#32 AR-1260-2

R.T.: 6.357 min
 Delta R.T.: 0.000 min
 Response: 2656697860
 Conc: 718.93 ng/ml



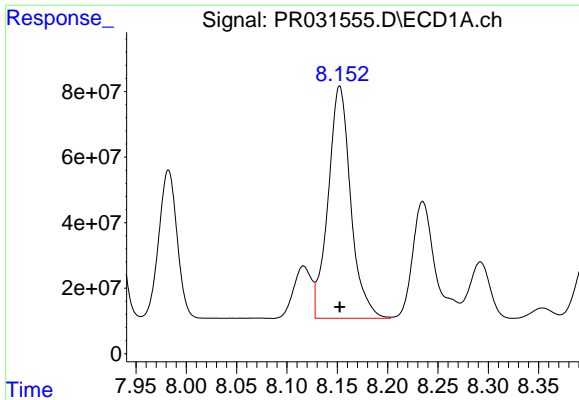
#33 AR-1260-3

R.T.: 7.847 min
 Delta R.T.: 0.000 min
 Response: 1592634384
 Conc: 756.02 ng/ml



#33 AR-1260-3

R.T.: 6.507 min
 Delta R.T.: 0.000 min
 Response: 2170092241
 Conc: 719.88 ng/ml

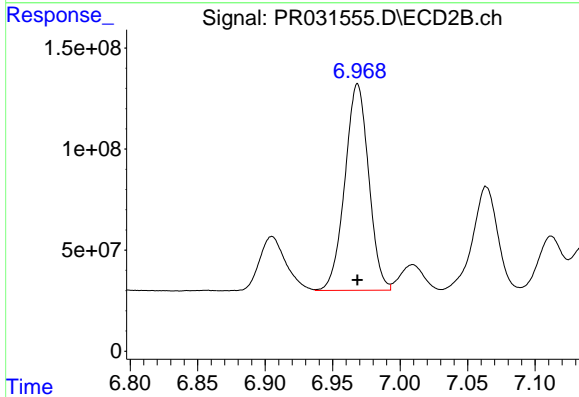


#34 AR-1260-4

R.T.: 8.152 min
 Delta R.T.: 0.000 min
 Response: 1108113825
 Conc: 722.77 ng/ml

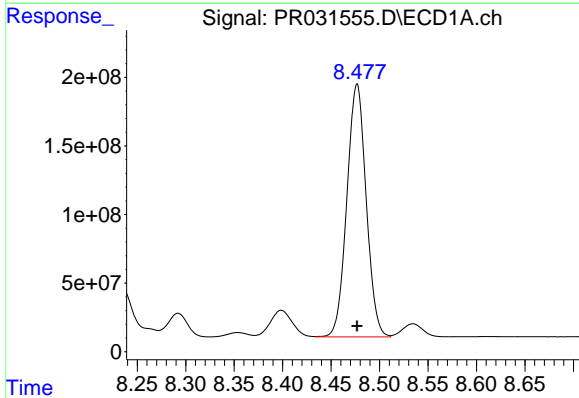
Instrument :
 ECD_R
 ClientSampled :
 AR1660ICC750

Manual Integrations
 APPROVED
 Sohil
 8/27/2018 3:29:58 PM



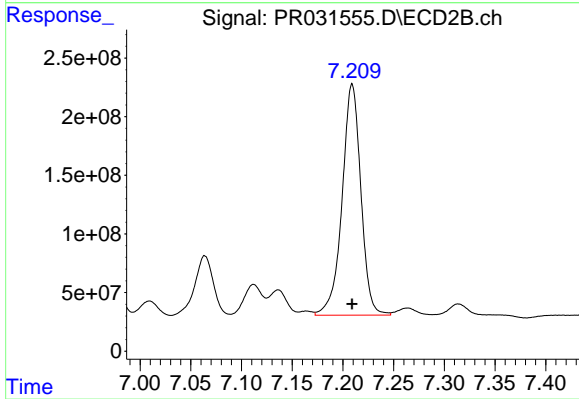
#34 AR-1260-4

R.T.: 6.968 min
 Delta R.T.: 0.000 min
 Response: 1253088345
 Conc: 716.18 ng/ml



#35 AR-1260-5

R.T.: 8.477 min
 Delta R.T.: 0.000 min
 Response: 2552766567
 Conc: 717.09 ng/ml



#35 AR-1260-5

R.T.: 7.209 min
 Delta R.T.: 0.000 min
 Response: 2540507209
 Conc: 720.98 ng/ml