

Data Path : Z:\pestpcbsrv\HPCHEM1\ECD_R\Data\PR082318\
 Data File : PR031594.D
 Signal(s) : Signal #1: ECD1A.ch Signal #2: ECD2B.ch
 Acq On : 23 Aug 2018 20:12
 Operator : SM\SJ
 Sample : J4612-01
 Misc :
 ALS Vial : 22 Sample Multiplier: 1

Instrument :
 ECD_R
 ClientSampleId :
 RBR200028

Integration File signal 1: autoint1.e
 Integration File signal 2: autoint2.e
 Quant Time: Aug 24 09:51:30 2018
 Quant Method : Z:\pestpcbsrv\HPCHEM1\ECD_R\Method\PR082318.M
 Quant Title : GC EXTRACTABLES
 QLast Update : Fri Aug 24 09:16:01 2018
 Response via : Initial Calibration
 Integrator: ChemStation

Volume Inj. : 2 µl
 Signal #1 Phase : ZB-MR1 Signal #2 Phase: ZB-MR2
 Signal #1 Info : 30Mx0.32mmx 0.50µ Signal #2 Info : 30M x 0.32mm x 0.25µm

Compound	RT#1	RT#2	Resp#1	Resp#2	ng/ml	ng/ml

System Monitoring Compounds						
1) SA Tetrachlo...	4.551	3.675	353.7E6	596.7E6	16.174	15.553
2) SA Decachlor...	10.321	8.550	478.0E6	333.0E6	15.402	16.385

Target Compounds

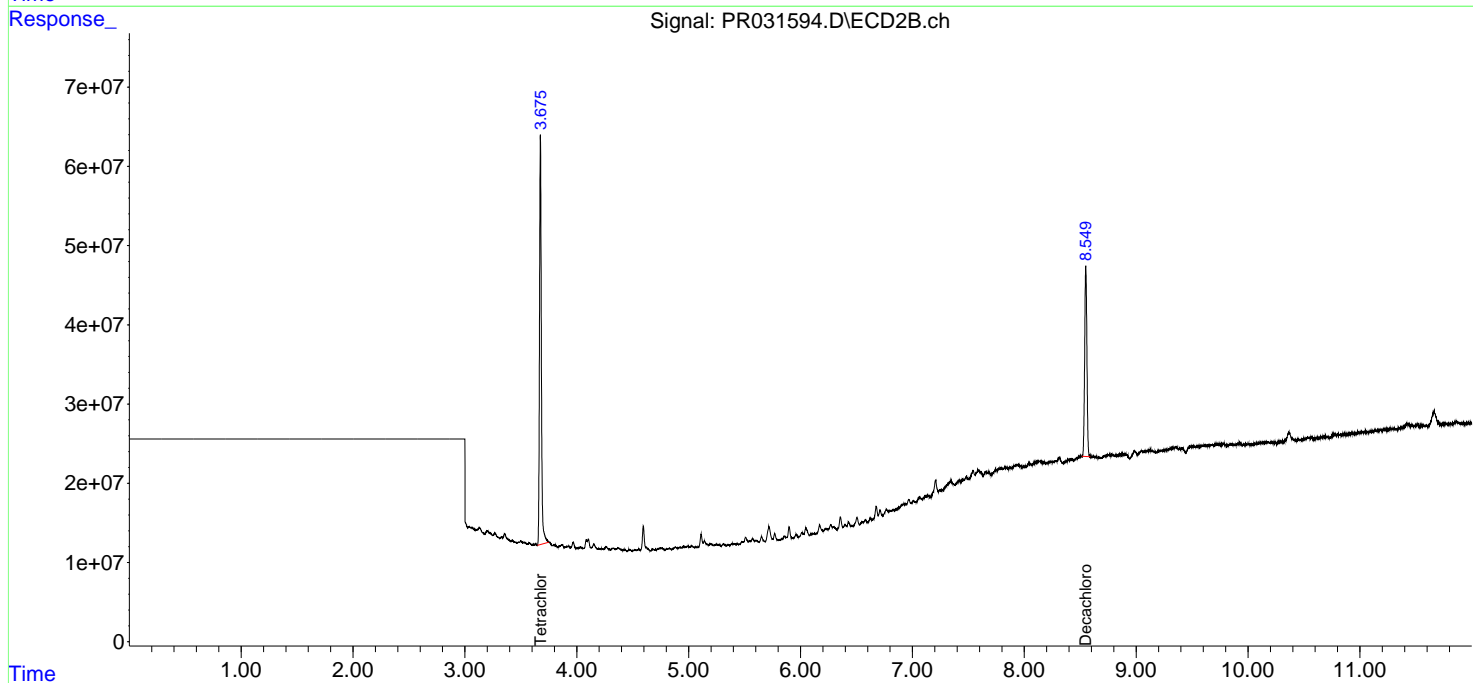
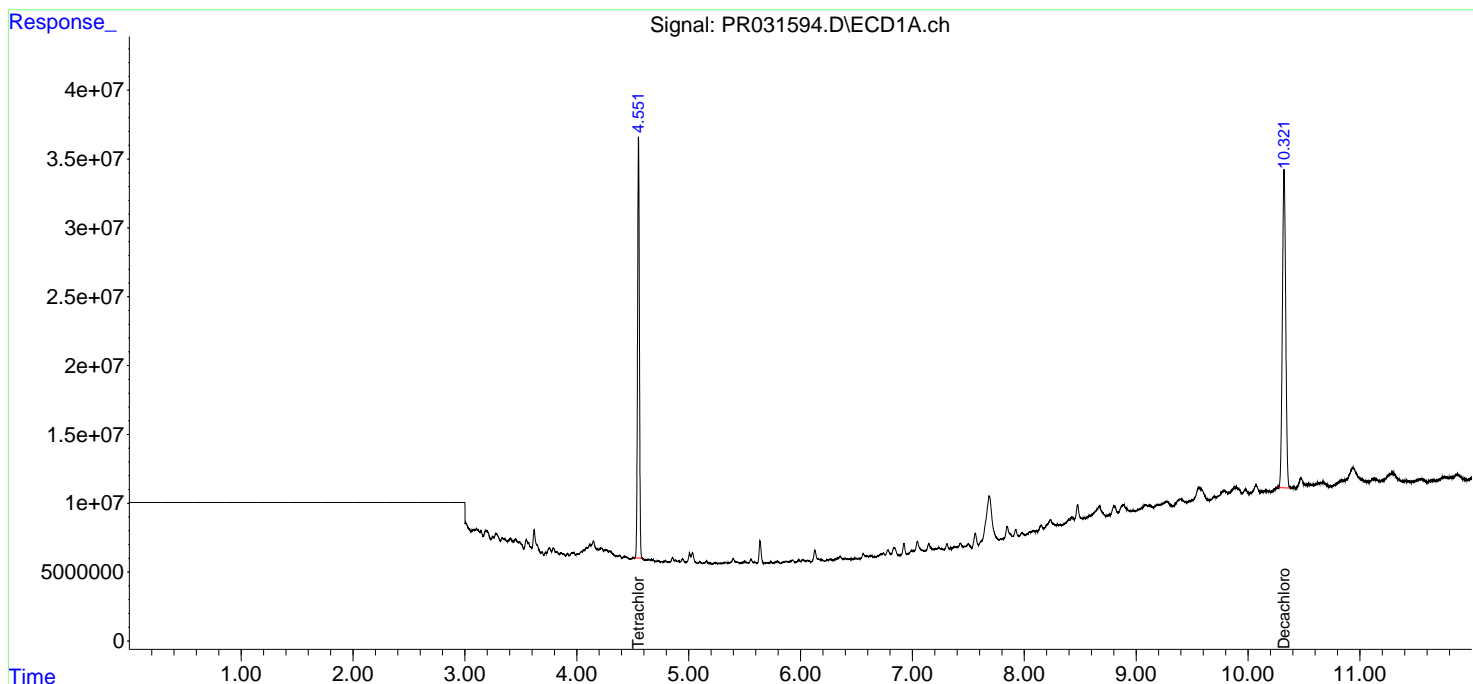
(f)=RT Delta > 1/2 Window (#)=Amounts differ by > 25% (m)=manual int.

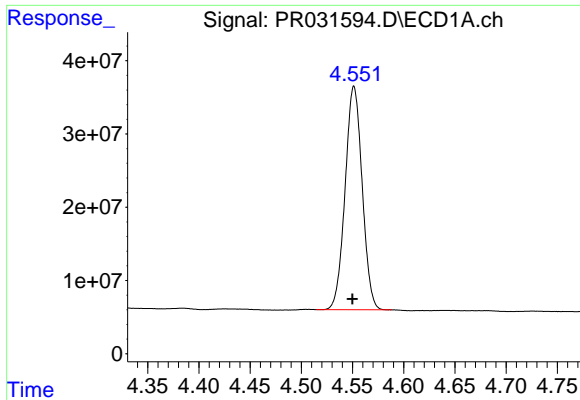
Data Path : Z:\pestpcbsrv\HPCHEM1\ECD_R\Data\PR082318\
 Data File : PR031594.D
 Signal(s) : Signal #1: ECD1A.ch Signal #2: ECD2B.ch
 Acq On : 23 Aug 2018 20:12
 Operator : SM\SJ
 Sample : J4612-01
 Misc :
 ALS Vial : 22 Sample Multiplier: 1

Instrument :
 ECD_R
 ClientSampleID :
 RBR200028

Integration File signal 1: autoint1.e
 Integration File signal 2: autoint2.e
 Quant Time: Aug 24 09:51:30 2018
 Quant Method : Z:\pestpcbsrv\HPCHEM1\ECD_R\Method\PR082318.M
 Quant Title : GC EXTRACTABLES
 QLast Update : Fri Aug 24 09:16:01 2018
 Response via : Initial Calibration
 Integrator: ChemStation

Volume Inj. : 2 µl
 Signal #1 Phase : ZB-MR1 Signal #2 Phase: ZB-MR2
 Signal #1 Info : 30Mx0.32mmx 0.50µm Signal #2 Info : 30M x 0.32mm x 0.25µm

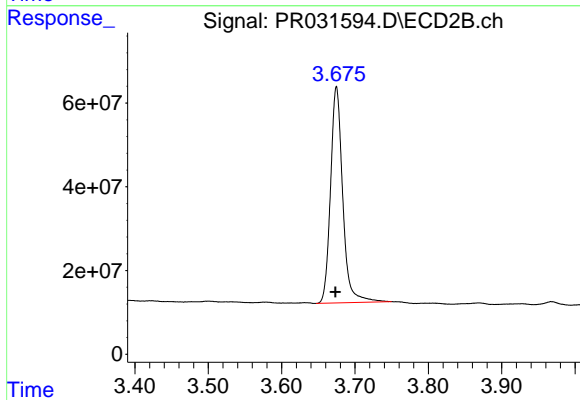




#1 Tetrachloro-m-xylene

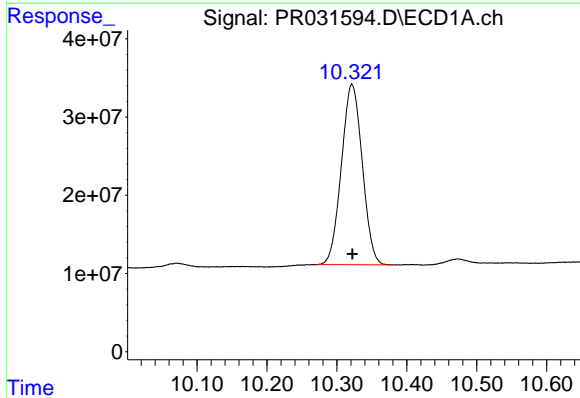
R.T.: 4.551 min
Delta R.T.: 0.001 min
Response: 353707750
Conc: 16.17 ng/ml

Instrument :
ECD_R
ClientSampleId :
RBR200028



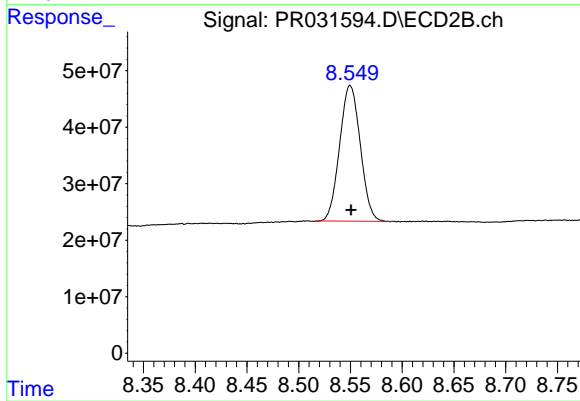
#1 Tetrachloro-m-xylene

R.T.: 3.675 min
Delta R.T.: 0.002 min
Response: 596670921
Conc: 15.55 ng/ml



#2 Decachlorobiphenyl

R.T.: 10.321 min
Delta R.T.: 0.000 min
Response: 478032094
Conc: 15.40 ng/ml



#2 Decachlorobiphenyl

R.T.: 8.550 min
Delta R.T.: 0.000 min
Response: 332961838
Conc: 16.38 ng/ml