

Data Path : Z:\pestpcbsrv\HPCHEM1\ECD_R\Data\PR082318\
 Data File : PR031606.D
 Signal(s) : Signal #1: ECD1A.ch Signal #2: ECD2B.ch
 Acq On : 23 Aug 2018 23:35
 Operator : SM\SJ
 Sample : J4610-06
 Misc :
 ALS Vial : 34 Sample Multiplier: 1

Instrument :
 ECD_R
ClientSampled :
 082118-DBRI-F-U-S

Manual Integrations
APPROVED
 Sohil
 8/27/2018 3:30:38 PM

Integration File signal 1: autoint1.e
 Integration File signal 2: autoint2.e
 Quant Time: Aug 24 10:02:33 2018
 Quant Method : Z:\pestpcbsrv\HPCHEM1\ECD_R\Method\PR082318.M
 Quant Title : GC EXTRACTABLES
 QLast Update : Fri Aug 24 09:16:01 2018
 Response via : Initial Calibration
 Integrator: ChemStation

Volume Inj. : 2 µl
 Signal #1 Phase : ZB-MR1 Signal #2 Phase: ZB-MR2
 Signal #1 Info : 30Mx0.32mmx 0.50µ Signal #2 Info : 30M x 0.32mm x 0.25µm

Compound	RT#1	RT#2	Resp#1	Resp#2	ng/ml	ng/ml

System Monitoring Compounds						
1) SA Tetrachlo...	4.550	3.672	308.1E6	563.7E6	14.087m	14.693m
2) SA Decachlor...	10.322	8.549	483.9E6	322.1E6	15.592	15.849

Target Compounds

(f)=RT Delta > 1/2 Window (#)=Amounts differ by > 25% (m)=manual int.

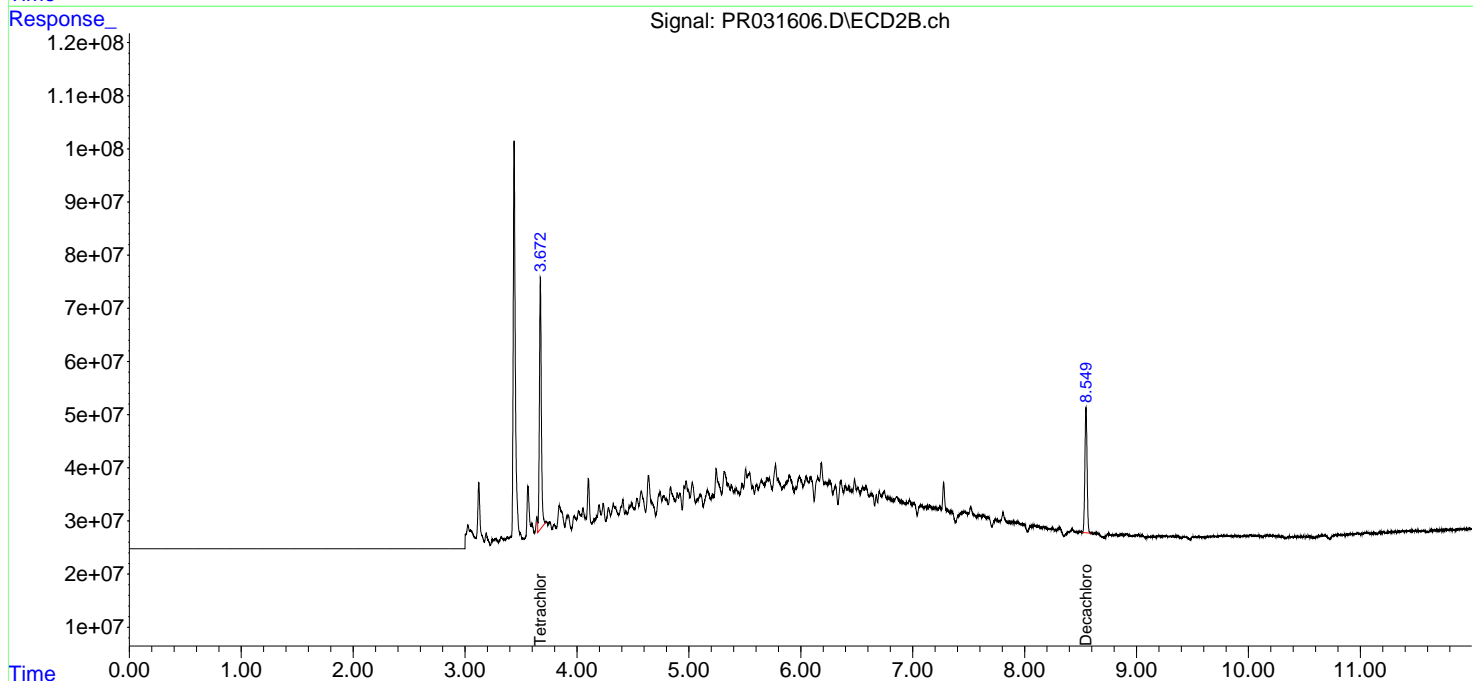
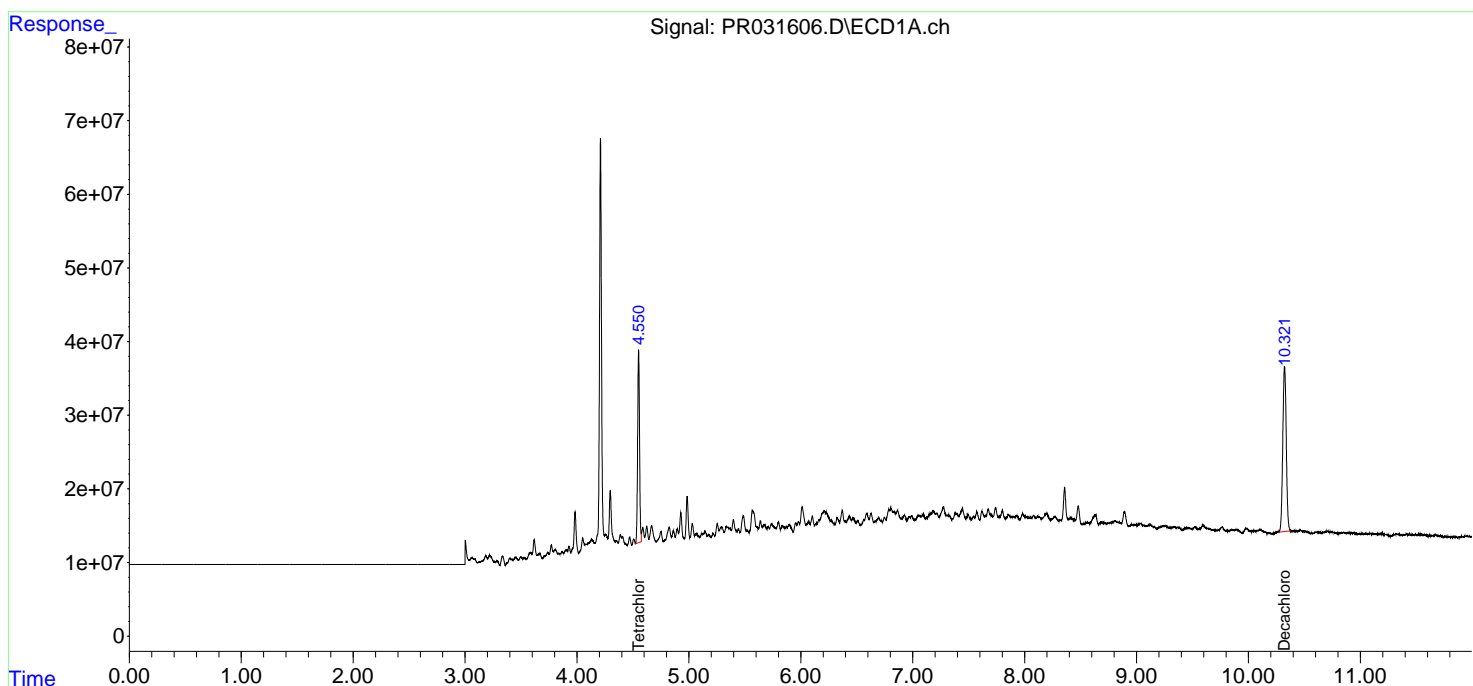
Data Path : Z:\pestpcbsrv\HPCHEM1\ECD_R\Data\PR082318\
 Data File : PR031606.D
 Signal(s) : Signal #1: ECD1A.ch Signal #2: ECD2B.ch
 Acq On : 23 Aug 2018 23:35
 Operator : SM\SJ
 Sample : J4610-06
 Misc :
 ALS Vial : 34 Sample Multiplier: 1

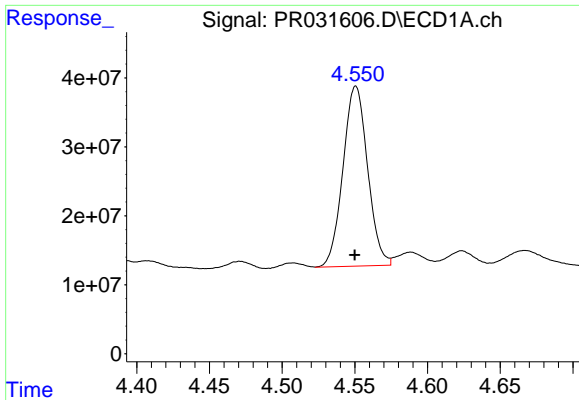
Instrument :
 ECD_R
Client Sampled :
 082118-DBRI-F-U-S

Manual Integrations
APPROVED
 Sohil
 8/27/2018 3:30:38 PM

Integration File signal 1: autoint1.e
 Integration File signal 2: autoint2.e
 Quant Time: Aug 24 10:02:33 2018
 Quant Method : Z:\pestpcbsrv\HPCHEM1\ECD_R\Method\PR082318.M
 Quant Title : GC EXTRACTABLES
 QLast Update : Fri Aug 24 09:16:01 2018
 Response via : Initial Calibration
 Integrator: ChemStation

Volume Inj. : 2 µl
 Signal #1 Phase : ZB-MR1 Signal #2 Phase: ZB-MR2
 Signal #1 Info : 30Mx0.32mmx 0.50µm Signal #2 Info : 30M x 0.32mm x 0.25µm

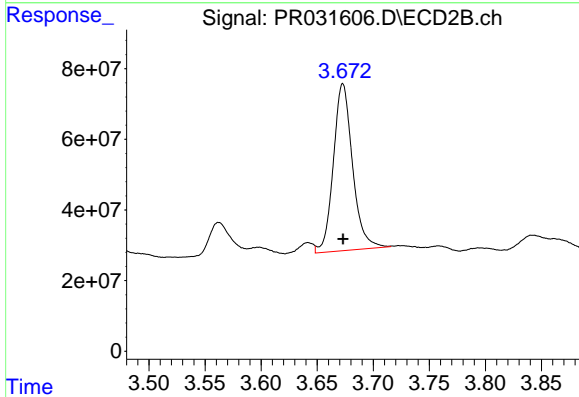




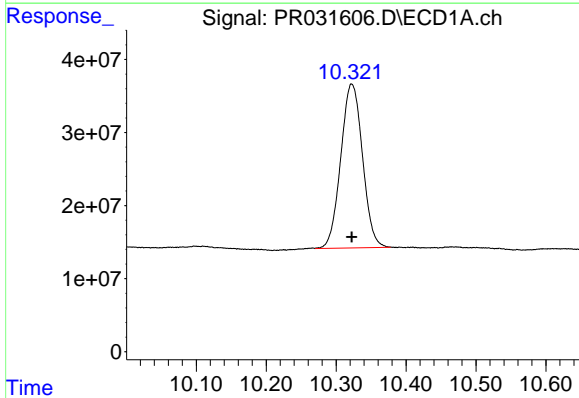
#1 Tetrachloro-m-xylene
 R.T.: 4.550 min
 Delta R.T.: 0.000 min
 Response: 308066206
 Conc: 14.09 ng/ml m

Instrument :
 ECD_R
 ClientSampleId :
 082118-DBRI-F-U-S

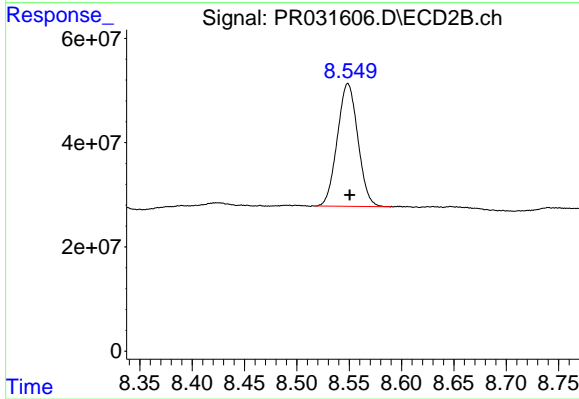
Manual Integrations
 APPROVED
 Sohil
 8/27/2018 3:30:38 PM



#1 Tetrachloro-m-xylene
 R.T.: 3.672 min
 Delta R.T.: 0.000 min
 Response: 563671477
 Conc: 14.69 ng/ml m



#2 Decachlorobiphenyl
 R.T.: 10.322 min
 Delta R.T.: 0.000 min
 Response: 483907872
 Conc: 15.59 ng/ml



#2 Decachlorobiphenyl
 R.T.: 8.549 min
 Delta R.T.: -0.002 min
 Response: 322078965
 Conc: 15.85 ng/ml