

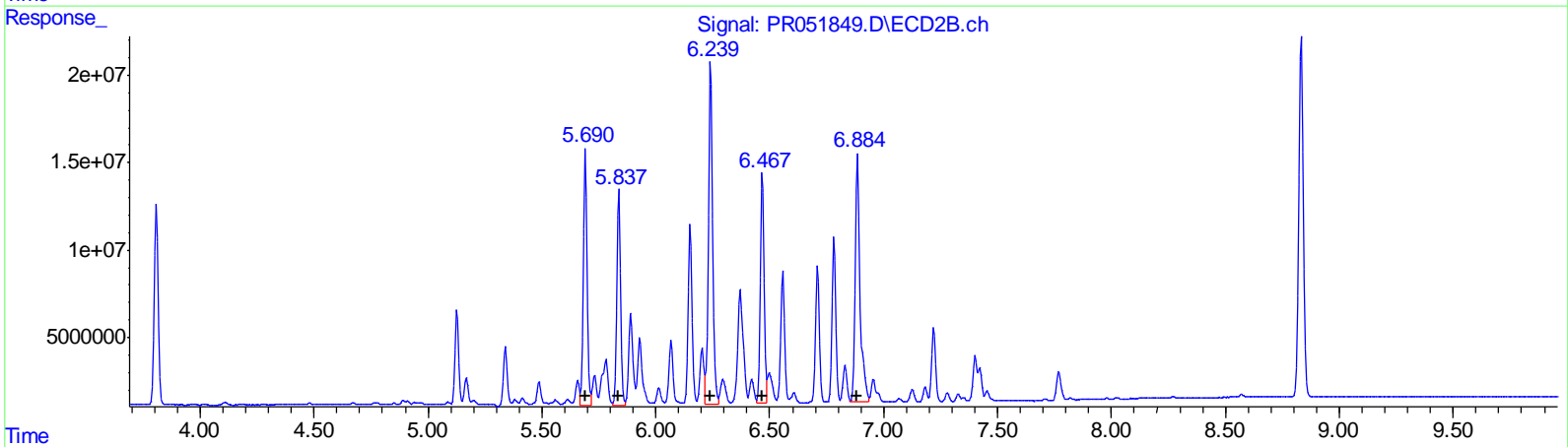
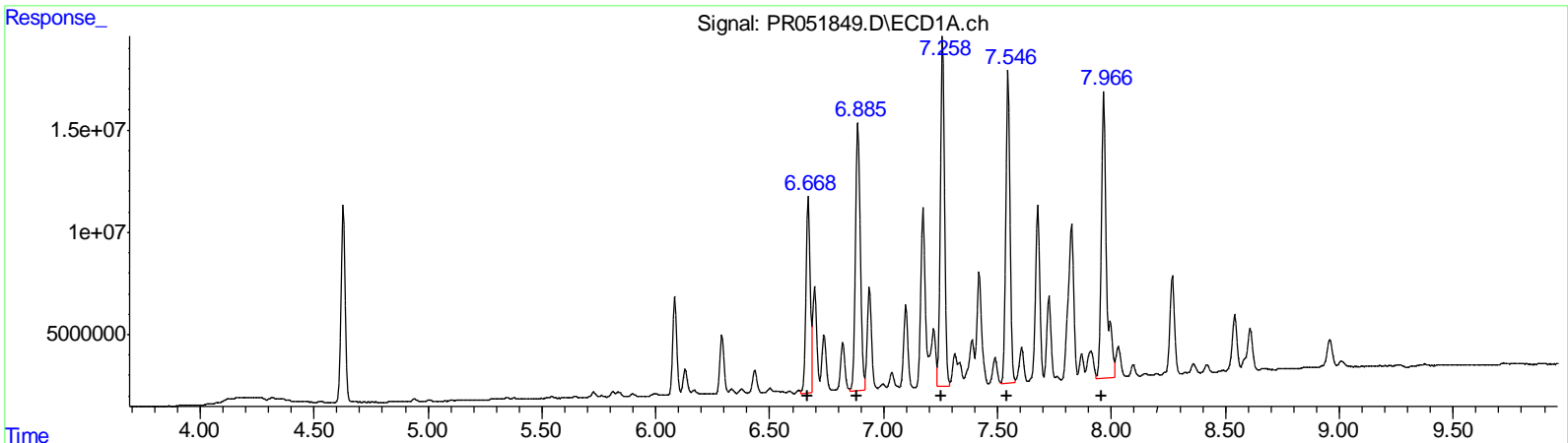
Data Path : Z:\pestpcbsrv\HPCHEM1\ECD_R\Data\PR082721\
 Data File : PR051849.D
 Signal(s) : Signal #1: ECD1A.ch Signal #2: ECD2B.ch
 Acq On : 27 Aug 2021 10:43
 Operator : DD\AJ
 Sample : AR1254CCC400
 Misc :
 ALS Vial : 6 Sample Multiplier: 1

Instrument :
 ECD_R
LabSampleId :
 AR1254CCC400

Manual Integrations
APPROVED
 mohammad
 8/30/2021 2:47:04 PM

Integration File signal 1: autoint1.e
 Integration File signal 2: autoint2.e
 Quant Time: Aug 28 05:42:54 2021
 Quant Method : Z:\pestpcbsrv\HPCHEM1\ECD_R\Method\PR082421CLP.M
 Quant Title : GC EXTRACTABLES
 QLast Update : Sat Aug 28 04:52:29 2021
 Response via : Initial Calibration
 Integrator: ChemStation

Volume Inj. : 1 µl
 Signal #1 Phase : ZB MR1 Signal #2 Phase: ZB MR2
 Signal #1 Info : 30Mx0.32mmx 0.5µm Signal #2 Info : 30M x 0.32mm x 0.25µm



QEdit

(26) AR-1254-1 (L6)

R.T.	Response	Conc
6.67	123643963	334.21
6.89	193791352	316.95
7.26	215358708	310.55
7.55	194870870	307.43
7.97	218787811	348.12

(26) AR-1254-1 #2 (L6)

R.T.	Response	Conc
5.69	164377154	326.78
5.84	139489279	322.44
6.24	242102918	317.89
6.47	150847804	316.67
6.88	207473328	307.32

Data Path : Z:\pestpcbsrv\HPCHEM1\ECD_R\Data\PR082721\
 Data File : PR051849.D
 Signal(s) : Signal #1: ECD1A.ch Signal #2: ECD2B.ch
 Acq On : 27 Aug 2021 10:43
 Operator : DD\AJ
 Sample : AR1254CCC400
 Misc :
 ALS Vial : 6 Sample Multiplier: 1

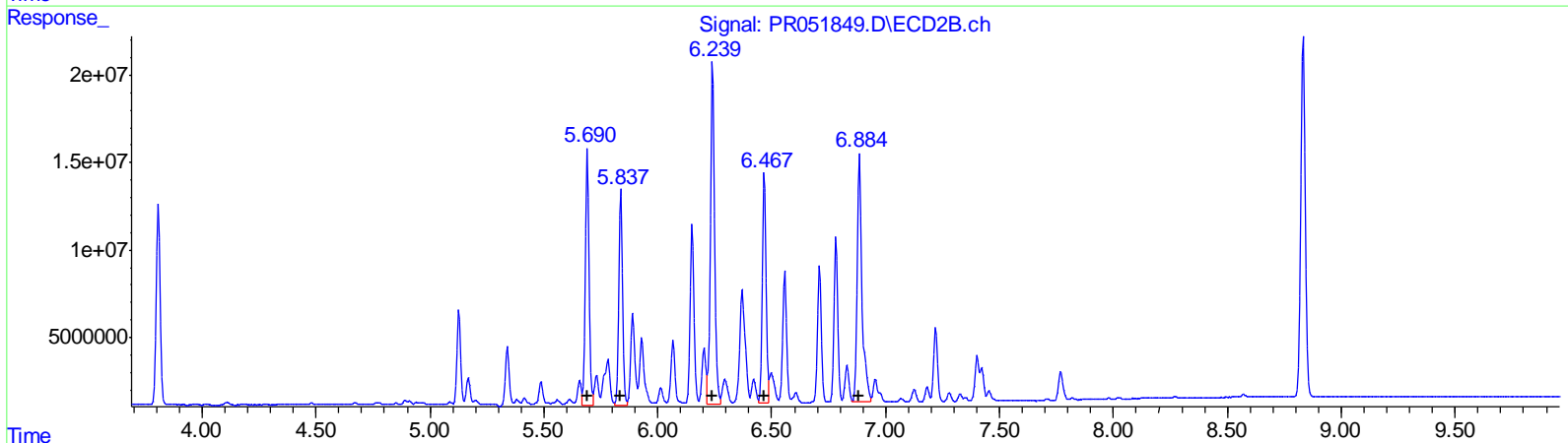
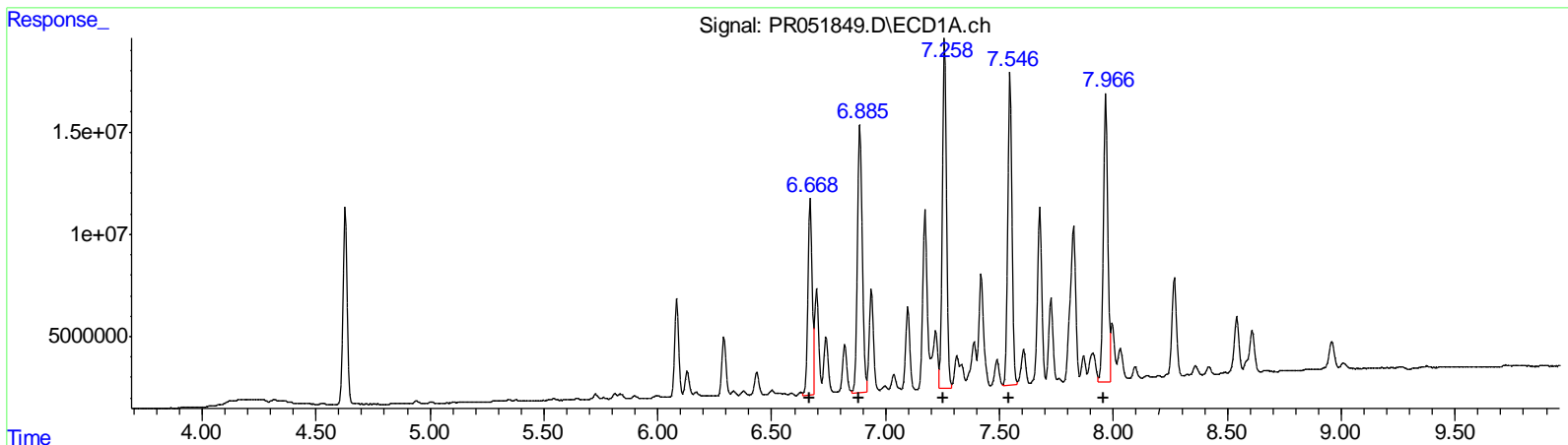
Instrument :
 ECD_R
 LabSampleId :
 AR1254CCC400

Manual Integrations
 APPROVED

mohammad
 8/30/2021 2:47:04 PM

Integration File signal 1: autoint1.e
 Integration File signal 2: autoint2.e
 Quant Time: Aug 28 05:42:54 2021
 Quant Method : Z:\pestpcbsrv\HPCHEM1\ECD_R\Method\PR082421CLP.M
 Quant Title : GC EXTRACTABLES
 QLast Update : Sat Aug 28 04:52:29 2021
 Response via : Initial Calibration
 Integrator: ChemStation

Volume Inj. : 1 µl
 Signal #1 Phase : ZB MR1 Signal #2 Phase: ZB MR2
 Signal #1 Info : 30Mx0.32mmx 0.5µm Signal #2 Info : 30M x 0.32mm x 0.25µm



QEdit

(26) AR-1254-1 (L6)

R.T.	Response	Conc
6.67	123643963	334.21
6.89	193791352	316.95
7.26	215358708	310.55
7.55	194870870	307.43
7.97	191097188	304.06

(26) AR-1254-1 #2 (L6)

R.T.	Response	Conc
5.69	164377154	326.78
5.84	139489279	322.44
6.24	242102918	317.89
6.47	150847804	316.67
6.88	207473328	307.32

(+) = Expected Retention Time