

Data Path : Z:\pestpcbsrv\HPCHEM1\ECD_R\Data\PR083021\
 Data File : PR051871.D
 Signal(s) : Signal #1: ECD1A.ch Signal #2: ECD2B.ch
 Acq On : 30 Aug 2021 10:56
 Operator : DD\AJ
 Sample : HEXANE
 Misc :
 ALS Vial : 1 Sample Multiplier: 1

Instrument :
 ECD_R
 ClientSampleId :

Integration File signal 1: autoint1.e
 Integration File signal 2: autoint2.e
 Quant Time: Aug 31 05:28:42 2021
 Quant Method : Z:\pestpcbsrv\HPCHEM1\ECD_R\Method\PR083021CLP.M
 Quant Title : GC EXTRACTABLES
 QLast Update : Tue Aug 31 05:27:20 2021
 Response via : Initial Calibration
 Integrator: ChemStation

Volume Inj. : 1 µl
 Signal #1 Phase : ZB MR1 Signal #2 Phase: ZB MR2
 Signal #1 Info : 30Mx0.32mmx 0.5µm Signal #2 Info : 30M x 0.32mm x 0.25µm

Compound	RT#1	RT#2	Resp#1	Resp#2	ng/ml	ng/ml
----------	------	------	--------	--------	-------	-------

System Monitoring Compounds

Target Compounds

3)	L1	AR-1016-1	5.812	4.847f	122516	696082	1.143	3.261 #
4)	L1	AR-1016-2	5.812	4.847f	122516	696082	0.660	2.187 #
8)	L2	AR-1221-1	0.000	3.971f	0	1004808	N.D.	15.830 #
10)	L2	AR-1221-3	5.044f	0.000	2485648	0	23.004	N.D. #
11)	L3	AR-1232-1	5.044f	0.000	2485648	0	29.274	N.D. #
12)	L3	AR-1232-2	0.000	4.847f	0	696082	N.D.	5.291 #
13)	L3	AR-1232-3	5.812	0.000	122516	0	1.853	N.D. #
16)	L4	AR-1242-1	5.812	4.847f	122516	696082	1.835	4.187 #
17)	L4	AR-1242-2	5.812	4.847f	122516	696082	1.026	2.802 #
21)	L5	AR-1248-1	5.812	4.847f	122516	696082	2.377	5.557 #
29)	L6	AR-1254-4	7.513	0.000	3497975	0	7.733	N.D. #
33)	L7	AR-1260-3	0.000	6.686	0	1516343	N.D.	3.909 #
38)	L8	AR-1262-3	8.974f	7.742f	225027	4493001	0.400	12.733 #
39)	L8	AR-1262-4	8.974f	7.742	225027	4493001	0.773	6.408 #
41)	L9	AR-1268-1	8.974f	7.742f	225027	4493001	0.146	4.298 #
42)	L9	AR-1268-2	8.974f	7.742	225027	4493001	0.181	4.568 #
43)	L9	AR-1268-3	9.329f	0.000	2014291	0	1.805	N.D. #

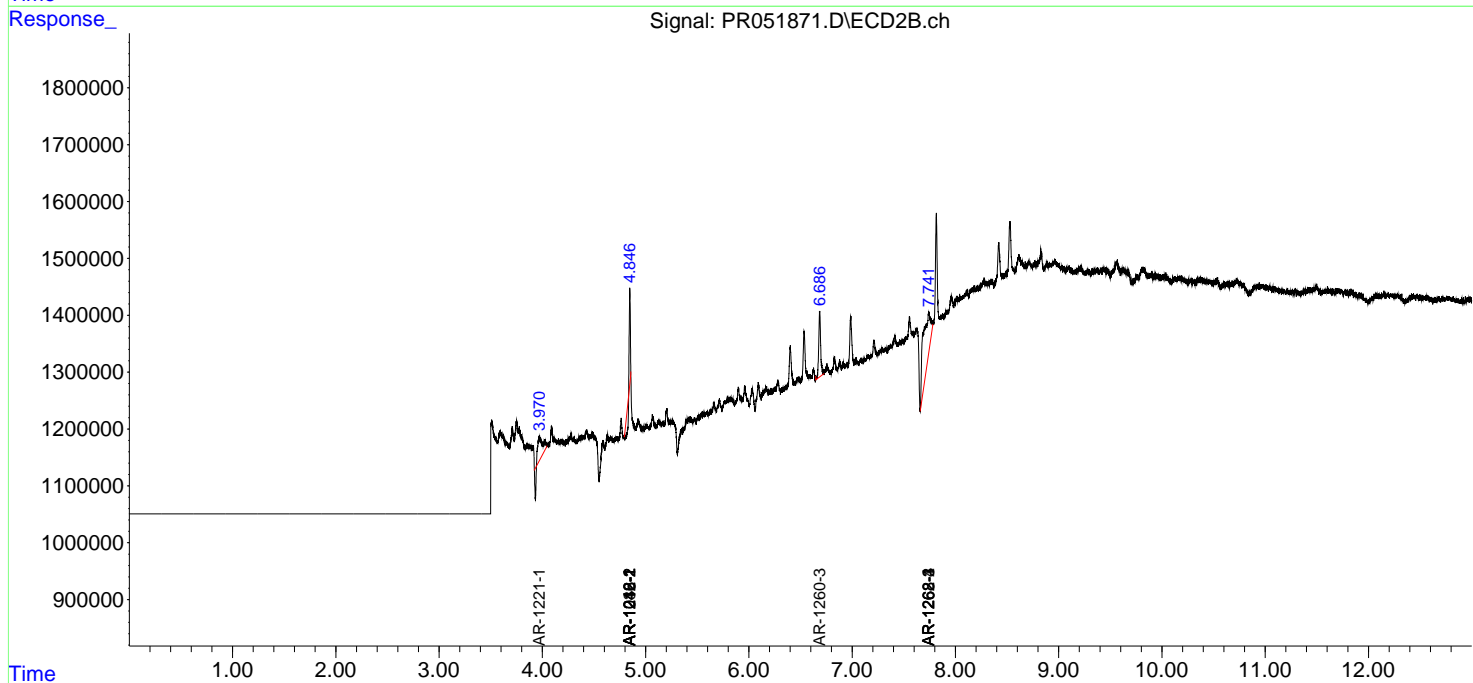
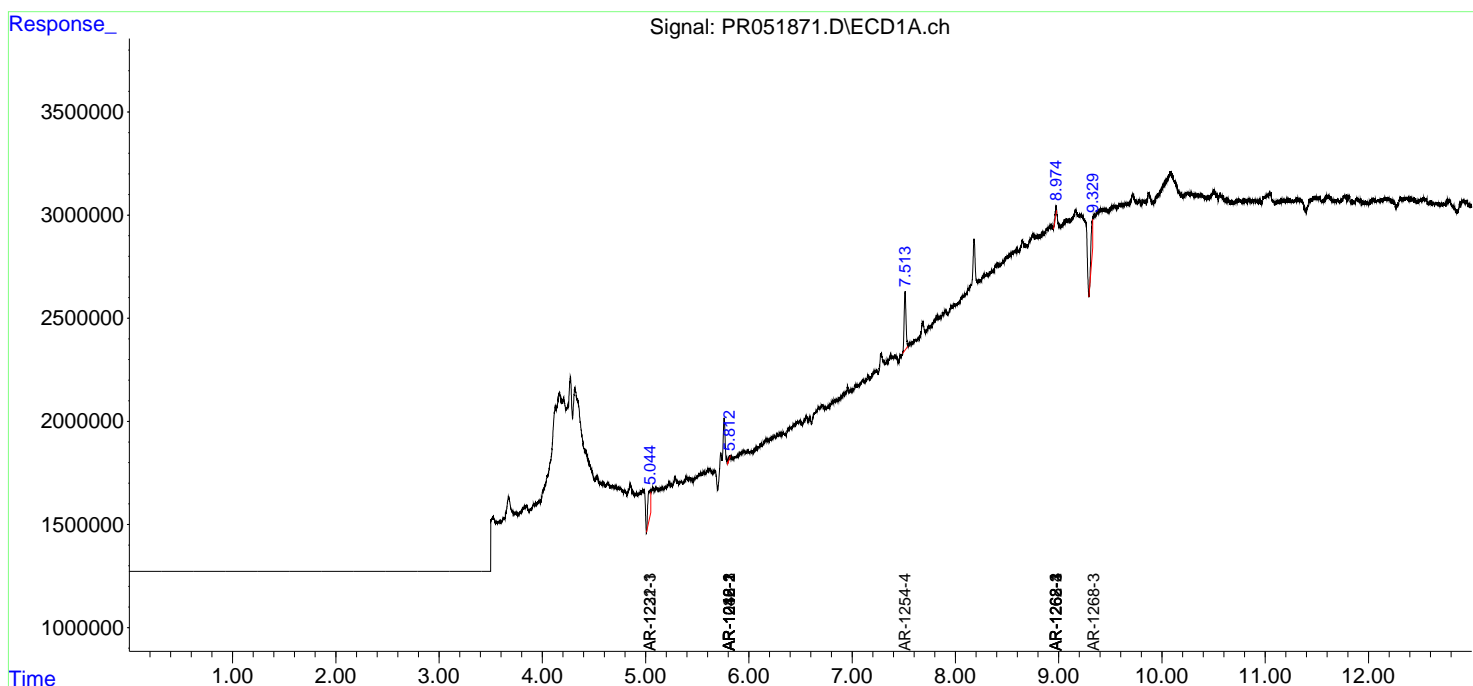
(f)=RT Delta > 1/2 Window (#)=Amounts differ by > 25% (m)=manual int.

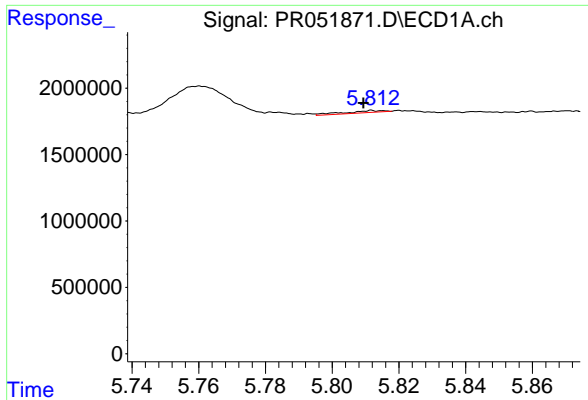
Data Path : Z:\pestpcbsrv\HPCHEM1\ECD_R\Data\PR083021\
 Data File : PR051871.D
 Signal(s) : Signal #1: ECD1A.ch Signal #2: ECD2B.ch
 Acq On : 30 Aug 2021 10:56
 Operator : DD\AJ
 Sample : HEXANE
 Misc :
 ALS Vial : 1 Sample Multiplier: 1

Instrument :
 ECD_R
 ClientSampleId :

Integration File signal 1: autoint1.e
 Integration File signal 2: autoint2.e
 Quant Time: Aug 31 05:28:42 2021
 Quant Method : Z:\pestpcbsrv\HPCHEM1\ECD_R\Method\PR083021CLP.M
 Quant Title : GC EXTRACTABLES
 QLast Update : Tue Aug 31 05:27:20 2021
 Response via : Initial Calibration
 Integrator: ChemStation

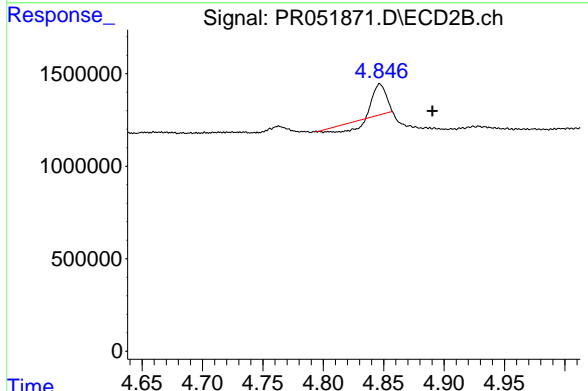
Volume Inj. : 1 µl
 Signal #1 Phase : ZB MR1 Signal #2 Phase: ZB MR2
 Signal #1 Info : 30Mx0.32mmx 0.5µm Signal #2 Info : 30M x 0.32mm x 0.25µm



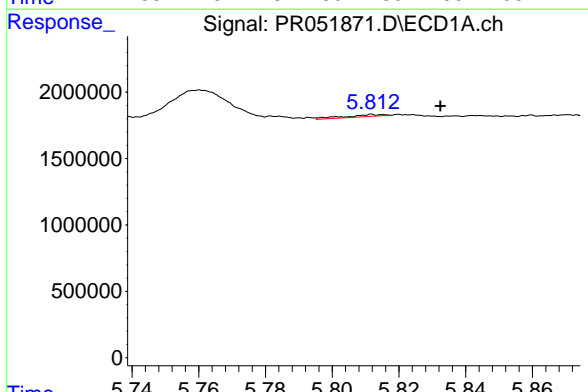


#3 AR-1016-1
 R.T.: 5.812 min
 Delta R.T.: 0.003 min
 Response: 122516
 Conc: 1.14 ng/ml

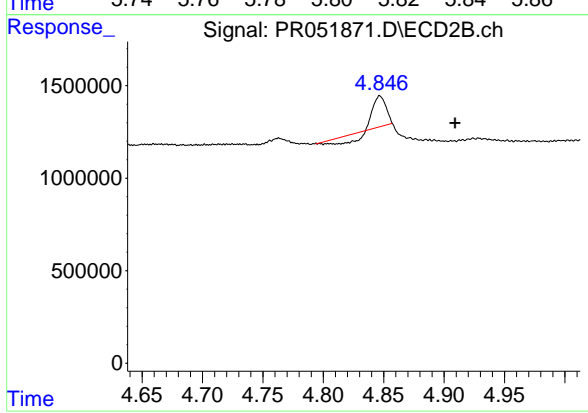
Instrument :
 ECD_R
 ClientSampleId :



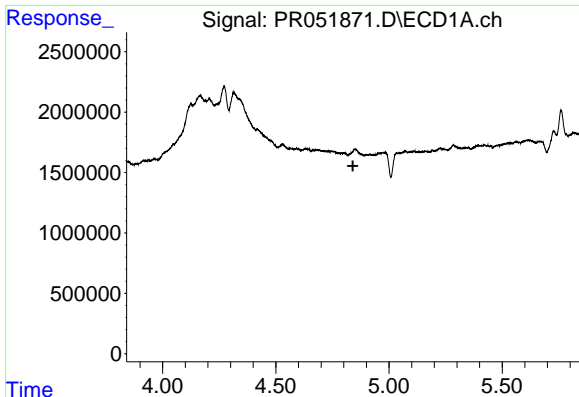
#3 AR-1016-1
 R.T.: 4.847 min
 Delta R.T.: -0.043 min
 Response: 696082
 Conc: 3.26 ng/ml



#4 AR-1016-2
 R.T.: 5.812 min
 Delta R.T.: -0.020 min
 Response: 122516
 Conc: 0.66 ng/ml



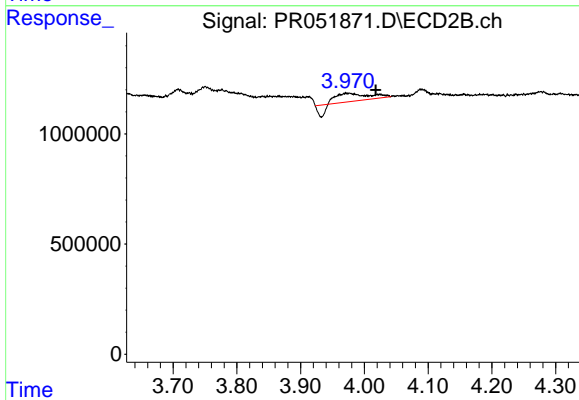
#4 AR-1016-2
 R.T.: 4.847 min
 Delta R.T.: -0.062 min
 Response: 696082
 Conc: 2.19 ng/ml



#8 AR-1221-1

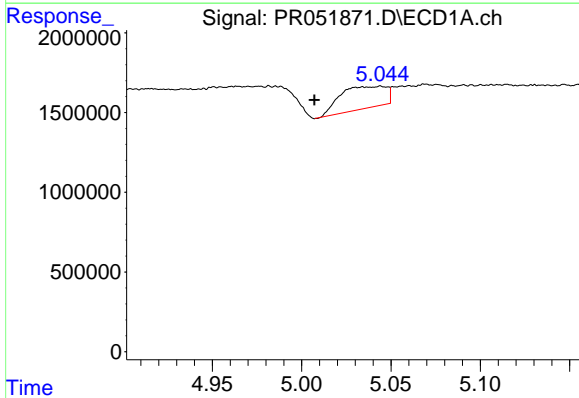
R.T.: 0.000 min
 Exp R.T.: 4.841 min
 Response: 0
 Conc: N.D.

Instrument :
 ECD_R
 ClientSampleId :



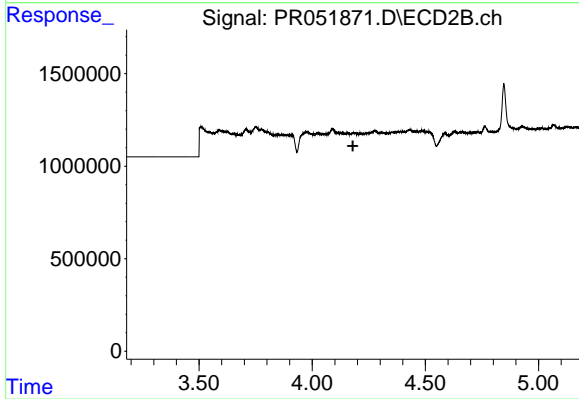
#8 AR-1221-1

R.T.: 3.971 min
 Delta R.T.: -0.047 min
 Response: 1004808
 Conc: 15.83 ng/ml



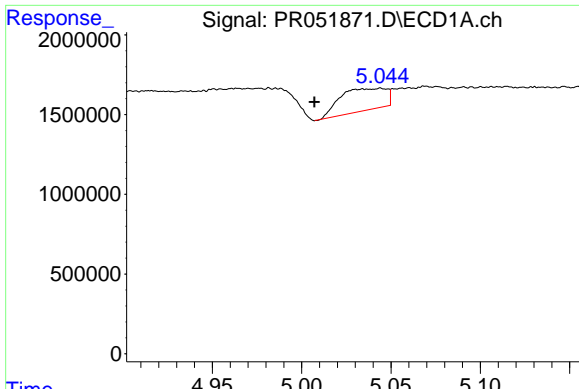
#10 AR-1221-3

R.T.: 5.044 min
 Delta R.T.: 0.037 min
 Response: 2485648
 Conc: 23.00 ng/ml



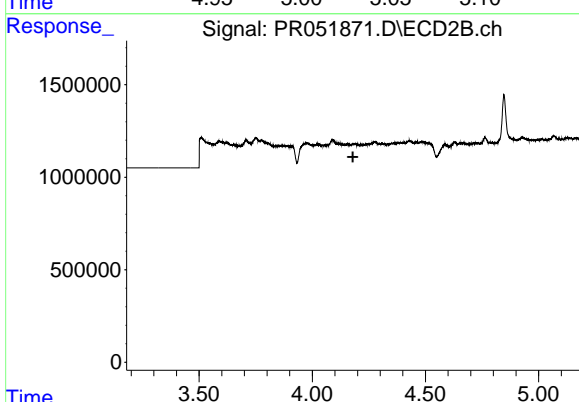
#10 AR-1221-3

R.T.: 0.000 min
 Exp R.T.: 4.180 min
 Response: 0
 Conc: N.D.

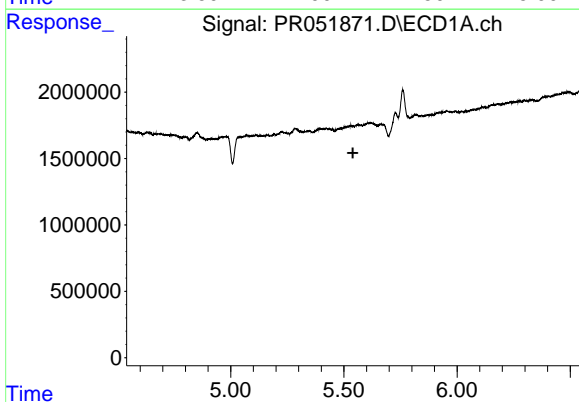


#11 AR-1232-1
 R.T.: 5.044 min
 Delta R.T.: 0.037 min
 Response: 2485648
 Conc: 29.27 ng/ml

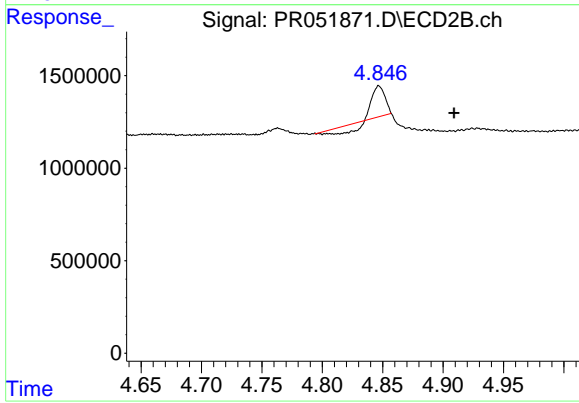
Instrument :
 ECD_R
 ClientSampleId :



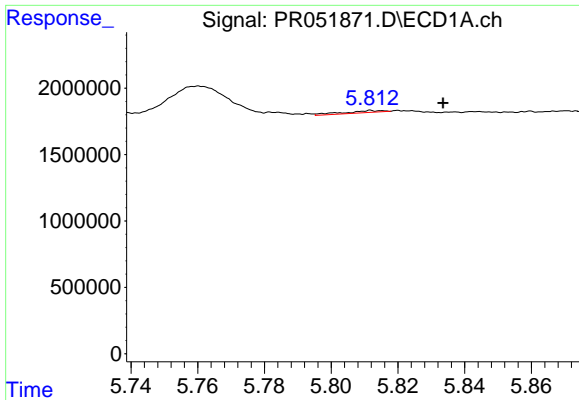
#11 AR-1232-1
 R.T.: 0.000 min
 Exp R.T. : 4.180 min
 Response: 0
 Conc: N.D.



#12 AR-1232-2
 R.T.: 0.000 min
 Exp R.T. : 5.540 min
 Response: 0
 Conc: N.D.



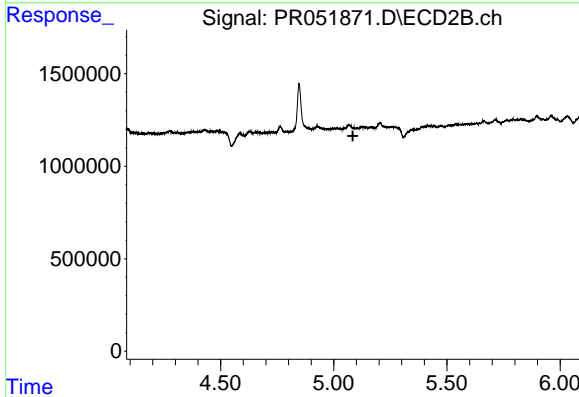
#12 AR-1232-2
 R.T.: 4.847 min
 Delta R.T.: -0.062 min
 Response: 696082
 Conc: 5.29 ng/ml



#13 AR-1232-3

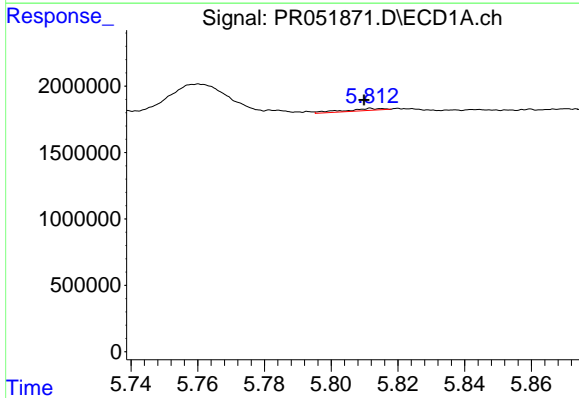
R.T.: 5.812 min
 Delta R.T.: -0.022 min
 Response: 122516
 Conc: 1.85 ng/ml

Instrument :
 ECD_R
 ClientSampleId :



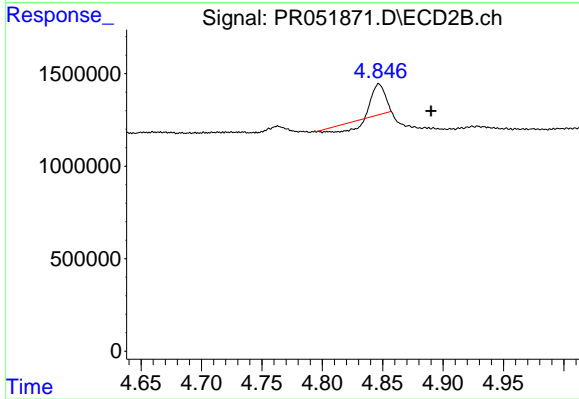
#13 AR-1232-3

R.T.: 0.000 min
 Exp R.T. : 5.085 min
 Response: 0
 Conc: N.D.



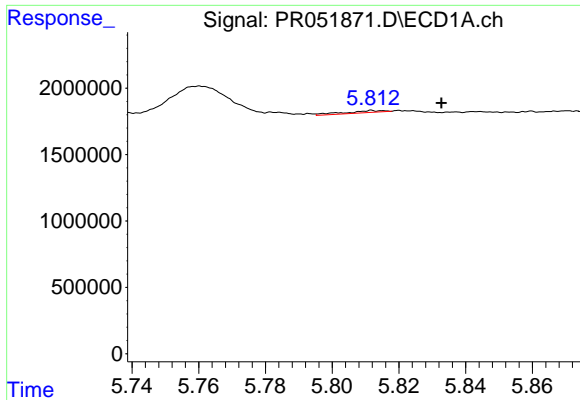
#16 AR-1242-1

R.T.: 5.812 min
 Delta R.T.: 0.002 min
 Response: 122516
 Conc: 1.84 ng/ml



#16 AR-1242-1

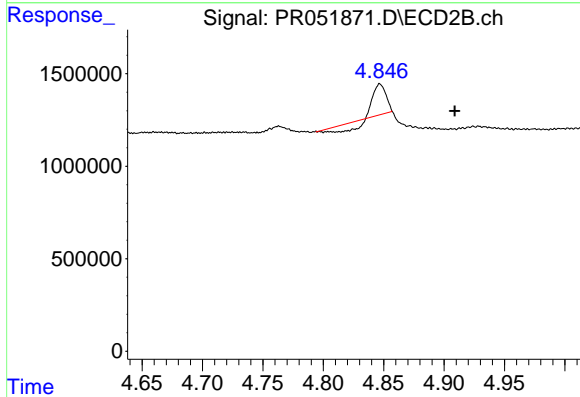
R.T.: 4.847 min
 Delta R.T.: -0.043 min
 Response: 696082
 Conc: 4.19 ng/ml



#17 AR-1242-2

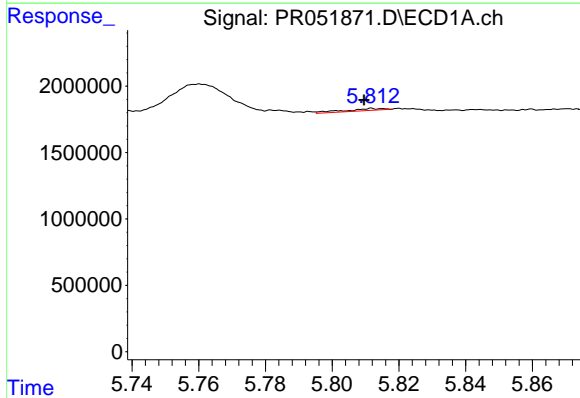
R.T.: 5.812 min
 Delta R.T.: -0.021 min
 Response: 122516
 Conc: 1.03 ng/ml

Instrument :
 ECD_R
 ClientSampleId :



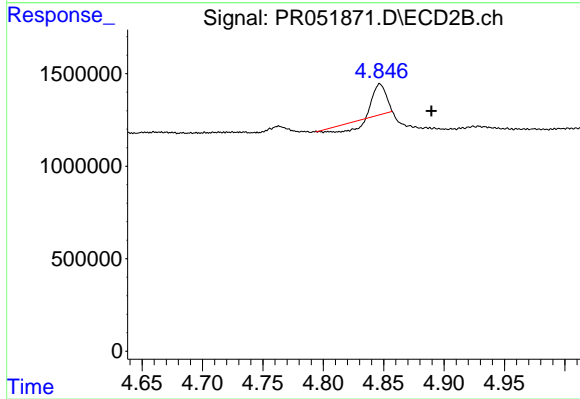
#17 AR-1242-2

R.T.: 4.847 min
 Delta R.T.: -0.062 min
 Response: 696082
 Conc: 2.80 ng/ml



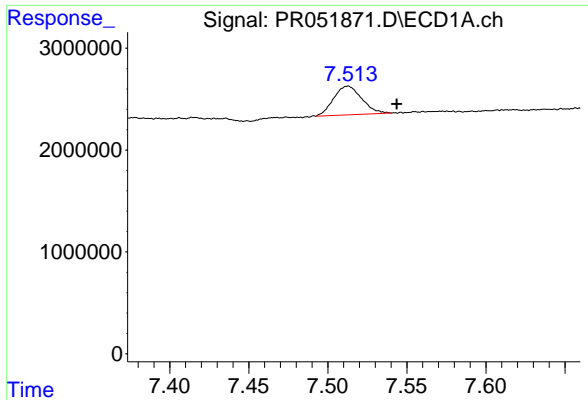
#21 AR-1248-1

R.T.: 5.812 min
 Delta R.T.: 0.002 min
 Response: 122516
 Conc: 2.38 ng/ml



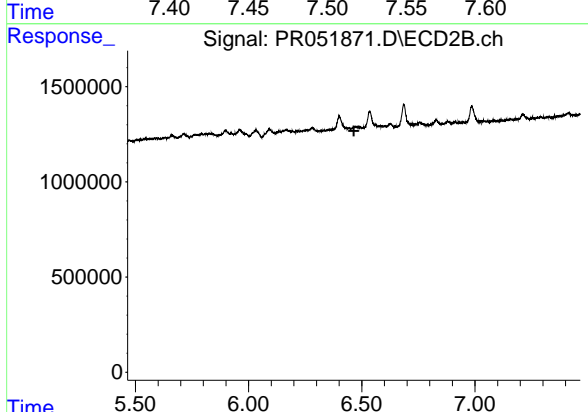
#21 AR-1248-1

R.T.: 4.847 min
 Delta R.T.: -0.043 min
 Response: 696082
 Conc: 5.56 ng/ml

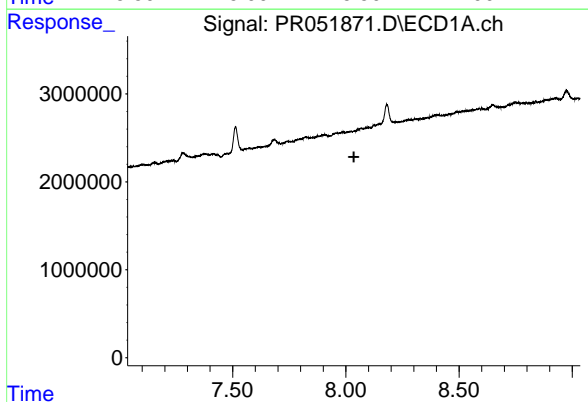


#29 AR-1254-4
 R.T.: 7.513 min
 Delta R.T.: -0.030 min
 Response: 3497975
 Conc: 7.73 ng/ml

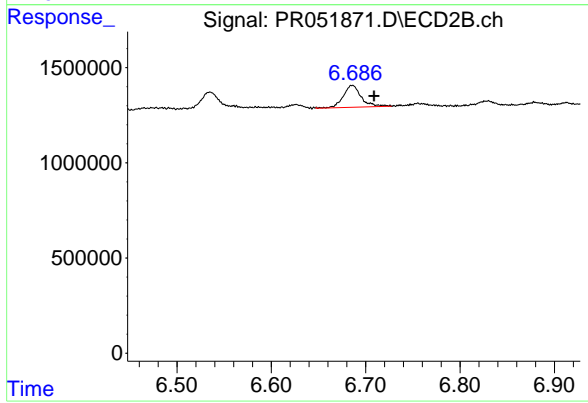
Instrument :
 ECD_R
 ClientSampleId :



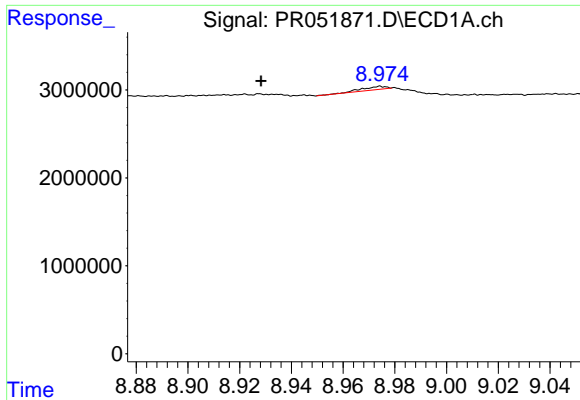
#29 AR-1254-4
 R.T.: 0.000 min
 Exp R.T. : 6.465 min
 Response: 0
 Conc: N.D.



#33 AR-1260-3
 R.T.: 0.000 min
 Exp R.T. : 8.036 min
 Response: 0
 Conc: N.D.

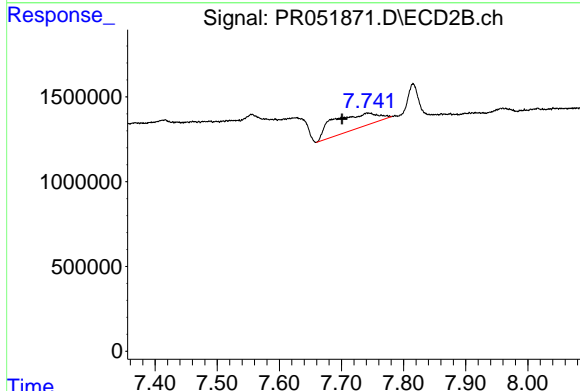


#33 AR-1260-3
 R.T.: 6.686 min
 Delta R.T.: -0.023 min
 Response: 1516343
 Conc: 3.91 ng/ml

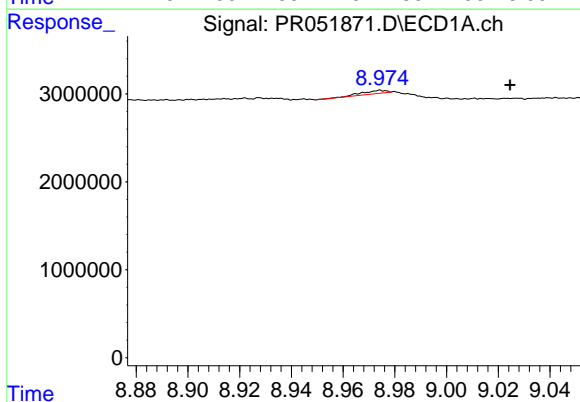


#38 AR-1262-3
 R.T.: 8.974 min
 Delta R.T.: 0.046 min
 Response: 225027
 Conc: 0.40 ng/ml

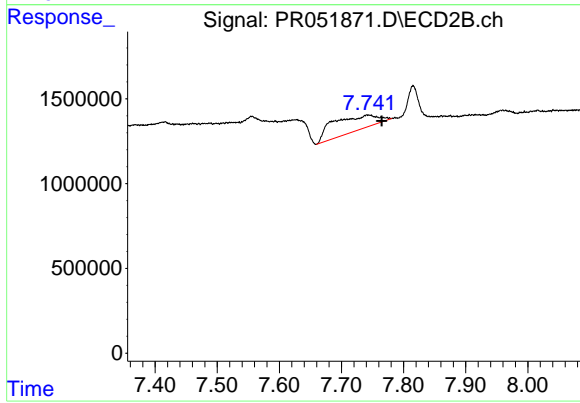
Instrument :
 ECD_R
 ClientSampleId :



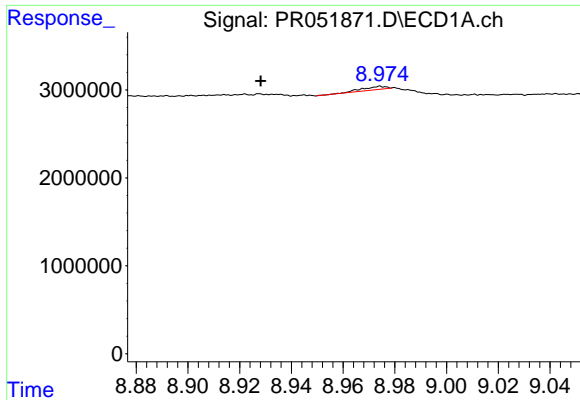
#38 AR-1262-3
 R.T.: 7.742 min
 Delta R.T.: 0.041 min
 Response: 4493001
 Conc: 12.73 ng/ml



#39 AR-1262-4
 R.T.: 8.974 min
 Delta R.T.: -0.050 min
 Response: 225027
 Conc: 0.77 ng/ml

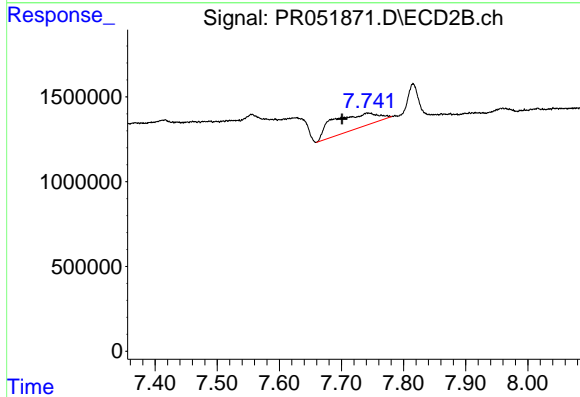


#39 AR-1262-4
 R.T.: 7.742 min
 Delta R.T.: -0.023 min
 Response: 4493001
 Conc: 6.41 ng/ml

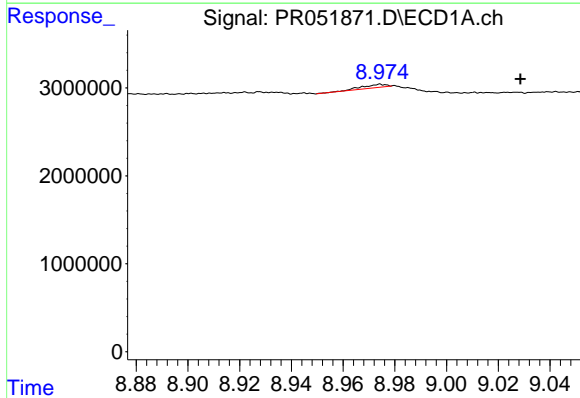


#41 AR-1268-1
 R.T.: 8.974 min
 Delta R.T.: 0.046 min
 Response: 225027
 Conc: 0.15 ng/ml

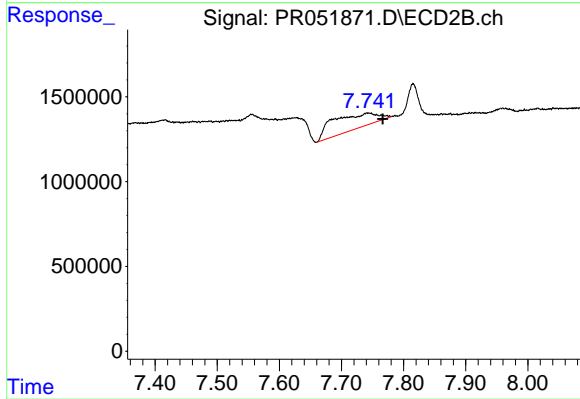
Instrument :
 ECD_R
 ClientSampleId :



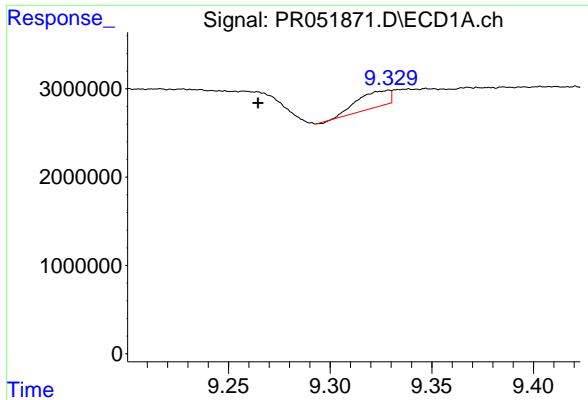
#41 AR-1268-1
 R.T.: 7.742 min
 Delta R.T.: 0.041 min
 Response: 4493001
 Conc: 4.30 ng/ml



#42 AR-1268-2
 R.T.: 8.974 min
 Delta R.T.: -0.054 min
 Response: 225027
 Conc: 0.18 ng/ml



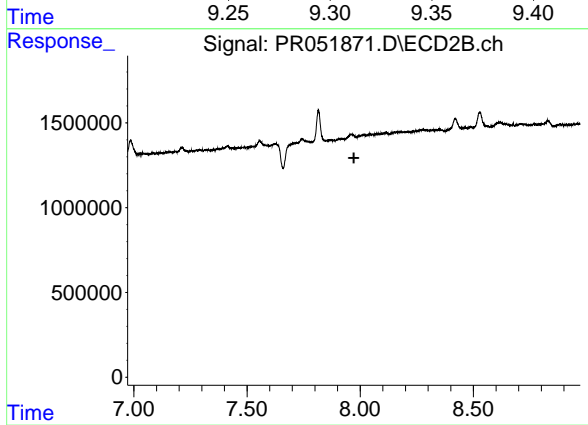
#42 AR-1268-2
 R.T.: 7.742 min
 Delta R.T.: -0.024 min
 Response: 4493001
 Conc: 4.57 ng/ml



#43 AR-1268-3

R.T.: 9.329 min
Delta R.T.: 0.064 min
Response: 2014291
Conc: 1.80 ng/ml

Instrument :
ECD_R
ClientSampleId :



#43 AR-1268-3

R.T.: 0.000 min
Exp R.T. : 7.972 min
Response: 0
Conc: N.D.