

Data Path : Z:\pestpcbsrv\HPCHEM1\ECD\_R\Data\PR083023\  
 Data File : PR062900.D  
 Signal(s) : Signal #1: ECD1A.ch Signal #2: ECD2B.ch  
 Acq On : 31 Aug 2023 02:16  
 Operator : YP\AJ  
 Sample : 04153-07  
 Misc :  
 ALS Vial : 43 Sample Multiplier: 1

Instrument :  
 ECD\_R  
 ClientSampleId :

Integration File signal 1: autoint1.e  
 Integration File signal 2: autoint2.e  
 Quant Time: Aug 31 02:54:01 2023  
 Quant Method : Z:\pestpcbsrv\HPCHEM1\ECD\_R\Method\PR082823CLP.M  
 Quant Title : GC EXTRACTABLES  
 QLast Update : Tue Aug 29 05:38:44 2023  
 Response via : Initial Calibration  
 Integrator: ChemStation

Volume Inj. : 1 µl  
 Signal #1 Phase : ZB MR1 Signal #2 Phase: ZB MR2  
 Signal #1 Info : 30Mx0.32mmx 0.5µm Signal #2 Info : 30M x 0.32mm x 0.25µm

Compound	RT#1	RT#2	Resp#1	Resp#2	ng/ml	ng/ml
-----						
System Monitoring Compounds						
1) SA Tetrachlo...	3.680	2.950	41489437	57446489	18.004	18.952
2) SA Decachlor...	9.609	8.225	45602186	96307296	28.540	25.858
Target Compounds						
3) L1 AR-1016-1	4.908	4.071	502703	428882	6.636	4.152 #
4) L1 AR-1016-2	4.931	4.089	688706	493662	6.224	3.363 #
5) L1 AR-1016-3	4.931f	4.272	688706	243055	9.918	3.039 #
6) L1 AR-1016-4	0.000	4.318	0	338357	N.D.	5.224 #
7) L1 AR-1016-5	0.000	4.535	0	399631	N.D.	4.730 #
8) L2 AR-1221-1	3.888	3.186	1128966	31298	40.335	0.819 #
9) L2 AR-1221-2	3.995	3.255	642481	1021434	32.875	36.901
10) L2 AR-1221-3	4.073	3.339	420982	547452	6.319	6.049
11) L3 AR-1232-1	4.073	3.339	420982	547452	7.631	7.216
12) L3 AR-1232-2	4.624	4.089	293404	493662	11.111	7.235 #
13) L3 AR-1232-3	4.931	4.272	688706	243055	13.563	6.710 #
14) L3 AR-1232-4	0.000	4.370	0	113969	N.D.	3.424 #
15) L3 AR-1232-5	0.000	4.535	0	399631	N.D.	10.758 #
16) L4 AR-1242-1	4.908	4.071	502703	428882	7.190	4.426 #
17) L4 AR-1242-2	4.931	4.089	688706	493662	6.904	3.625 #
18) L4 AR-1242-3	4.931f	4.272	688706	243055	11.006	3.281 #
19) L4 AR-1242-4	0.000	4.370	0	113969	N.D.	1.545 #
20) L4 AR-1242-5	0.000	4.912	0	771151	N.D.	8.223 #
21) L5 AR-1248-1	4.908	4.071	502703	428882	9.884	5.977 #
22) L5 AR-1248-2	0.000	4.318	0	338357	N.D.	3.288 #
23) L5 AR-1248-3	0.000	4.370	0	113969	N.D.	1.082 #
24) L5 AR-1248-4	0.000	4.535	0	399631	N.D.	3.158 #
25) L5 AR-1248-5	0.000	4.972	0	244885	N.D.	1.934 #
26) L6 AR-1254-1	0.000	4.912	0	771151	N.D.	4.120 #
27) L6 AR-1254-2	0.000	5.066	0	633156	N.D.	3.817 #
28) L6 AR-1254-3	0.000	5.498	0	632579	N.D.	2.330 #
29) L6 AR-1254-4	0.000	5.744	0	138056	N.D.	0.794 #
30) L6 AR-1254-5	0.000	6.179	0	212211	N.D.	0.831 #
31) L7 AR-1260-1	0.000	5.637	0	233668	N.D.	1.255 #
32) L7 AR-1260-2	0.000	5.843	0	127581	N.D.	0.566 #
33) L7 AR-1260-3	0.000	6.005	0	319648	N.D.	1.439 #
34) L7 AR-1260-4	0.000	6.503	0	157115	N.D.	0.842 #
35) L7 AR-1260-5	0.000	6.769	0	48771	N.D.	0.111 #
36) L8 AR-1262-1	0.000	6.240	0	97531	N.D.	0.371 #
37) L8 AR-1262-2	0.000	6.769	0	48771	N.D.	0.100 #
38) L8 AR-1262-3	0.000	7.071	0	370329	N.D.	1.877 #
39) L8 AR-1262-4	0.000	7.148	0	44159	N.D.	0.119 #
40) L8 AR-1262-5	0.000	7.660	0	85289	N.D.	0.474 #
41) L9 AR-1268-1	0.000	7.071	0	370329	N.D.	0.636 #

Data Path : Z:\pestpcbsrv\HPCHEM1\ECD\_R\Data\PR083023\  
 Data File : PR062900.D  
 Signal(s) : Signal #1: ECD1A.ch Signal #2: ECD2B.ch  
 Acq On : 31 Aug 2023 02:16  
 Operator : YP\AJ  
 Sample : 04153-07  
 Misc :  
 ALS Vial : 43 Sample Multiplier: 1

Instrument :  
 ECD\_R  
 ClientSampleId :

Integration File signal 1: autoint1.e  
 Integration File signal 2: autoint2.e  
 Quant Time: Aug 31 02:54:01 2023  
 Quant Method : Z:\pestpcbsrv\HPCHEM1\ECD\_R\Method\PR082823CLP.M  
 Quant Title : GC EXTRACTABLES  
 QLast Update : Tue Aug 29 05:38:44 2023  
 Response via : Initial Calibration  
 Integrator: ChemStation

Volume Inj. : 1 µl  
 Signal #1 Phase : ZB MR1 Signal #2 Phase: ZB MR2  
 Signal #1 Info : 30Mx0.32mmx 0.5µm Signal #2 Info : 30M x 0.32mm x 0.25µm

	Compound	RT#1	RT#2	Resp#1	Resp#2	ng/ml	ng/ml
42)	L9 AR-1268-2	0.000	7.148	0	44159	N.D.	0.082 #
43)	L9 AR-1268-3	0.000	7.366	0	486923	N.D.	1.031 #
44)	L9 AR-1268-4	0.000	7.660	0	85289	N.D.	0.421 #
45)	L9 AR-1268-5	0.000	7.981	0	799378	N.D.	0.544 #

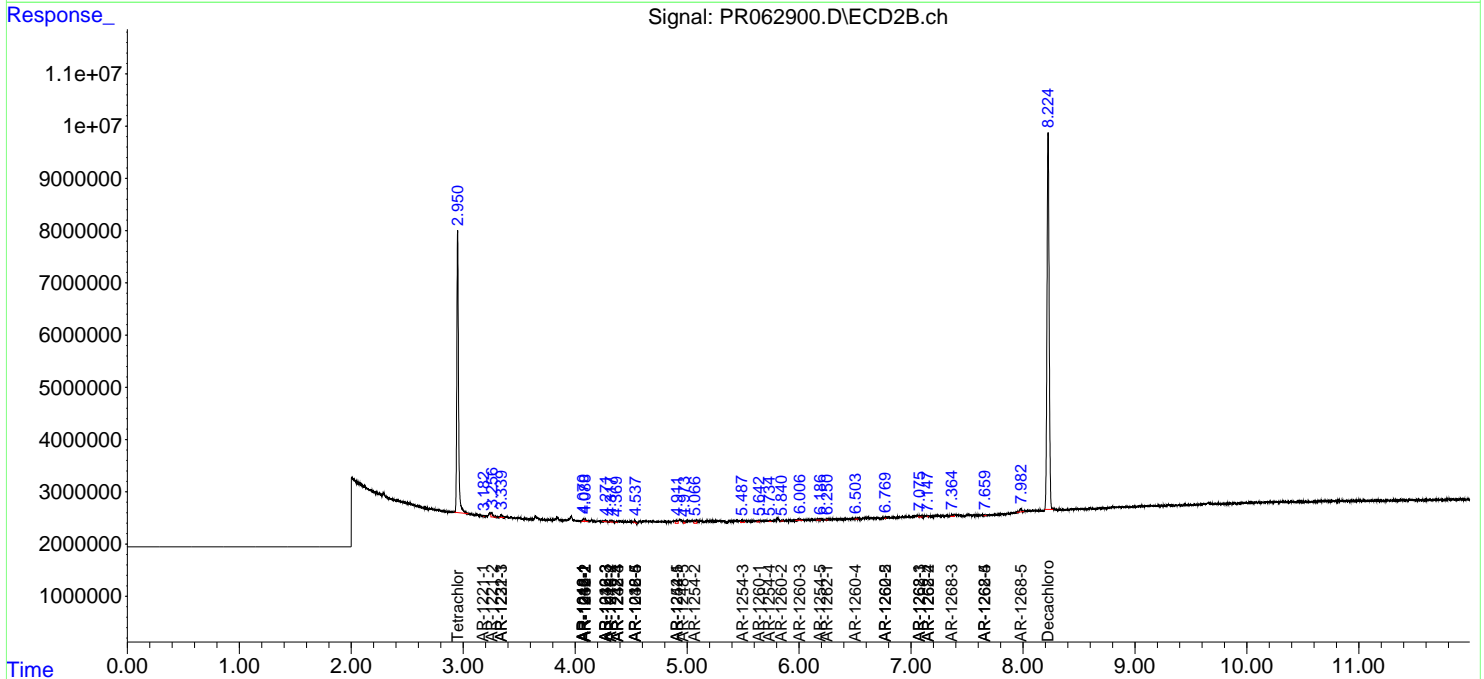
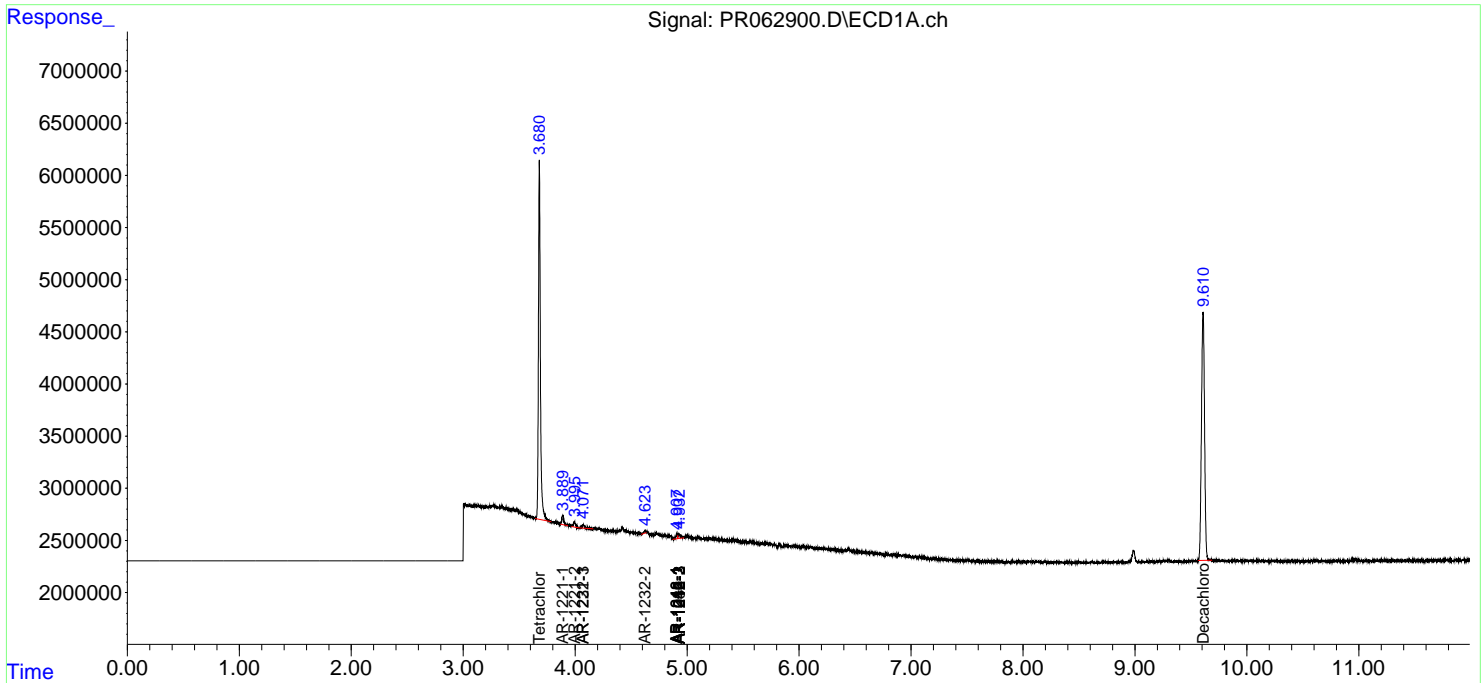
(f)=RT Delta > 1/2 Window (#)=Amounts differ by > 25% (m)=manual int.

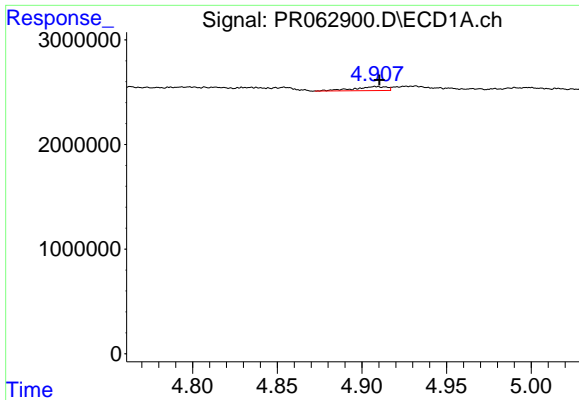
Data Path : Z:\pestpcbsrv\HPCHEM1\ECD\_R\Data\PR083023\  
 Data File : PR062900.D  
 Signal(s) : Signal #1: ECD1A.ch Signal #2: ECD2B.ch  
 Acq On : 31 Aug 2023 02:16  
 Operator : YP\AJ  
 Sample : 04153-07  
 Misc :  
 ALS Vial : 43 Sample Multiplier: 1

Instrument :  
 ECD\_R  
 ClientSampleId :

Integration File signal 1: autoint1.e  
 Integration File signal 2: autoint2.e  
 Quant Time: Aug 31 02:54:01 2023  
 Quant Method : Z:\pestpcbsrv\HPCHEM1\ECD\_R\Method\PR082823CLP.M  
 Quant Title : GC EXTRACTABLES  
 QLast Update : Tue Aug 29 05:38:44 2023  
 Response via : Initial Calibration  
 Integrator: ChemStation

Volume Inj. : 1 µl  
 Signal #1 Phase : ZB MR1 Signal #2 Phase: ZB MR2  
 Signal #1 Info : 30Mx0.32mmx 0.5µm Signal #2 Info : 30M x 0.32mm x 0.25µm

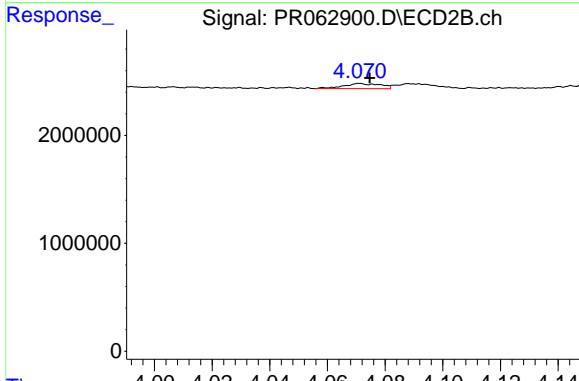




#3 AR-1016-1

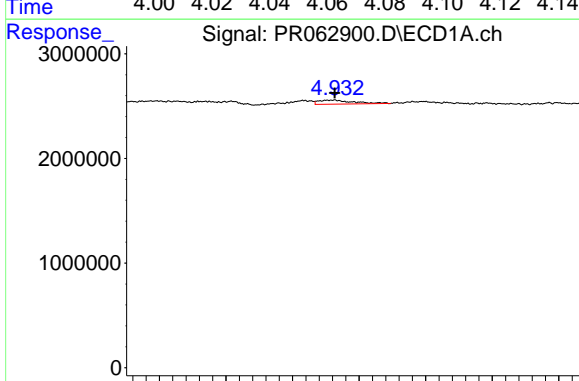
R.T.: 4.908 min  
 Delta R.T.: -0.002 min  
 Response: 502703  
 Conc: 6.64 ng/ml

Instrument :  
 ECD\_R  
 ClientSampleId :



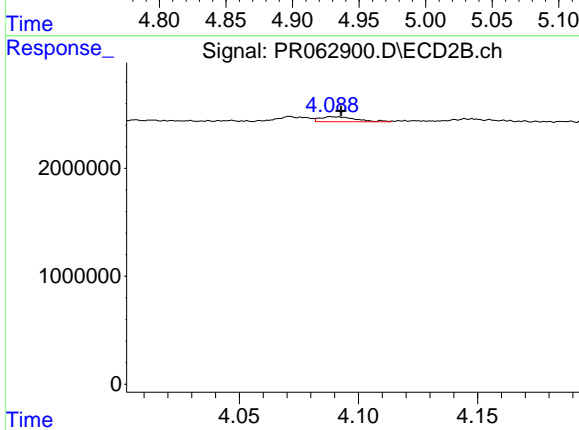
#3 AR-1016-1

R.T.: 4.071 min  
 Delta R.T.: -0.003 min  
 Response: 428882  
 Conc: 4.15 ng/ml



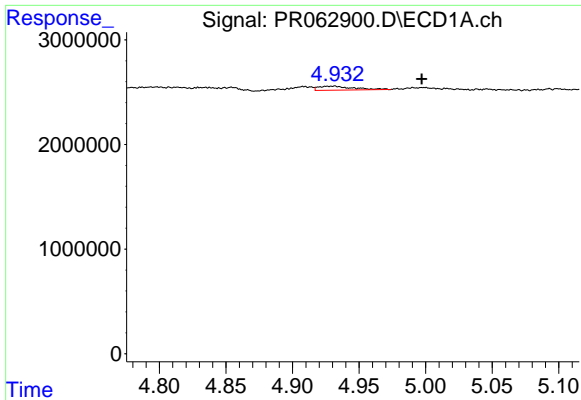
#4 AR-1016-2

R.T.: 4.931 min  
 Delta R.T.: 0.000 min  
 Response: 688706  
 Conc: 6.22 ng/ml



#4 AR-1016-2

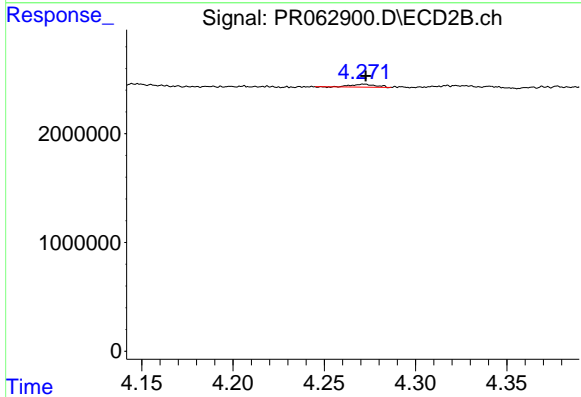
R.T.: 4.089 min  
 Delta R.T.: -0.003 min  
 Response: 493662  
 Conc: 3.36 ng/ml



#5 AR-1016-3

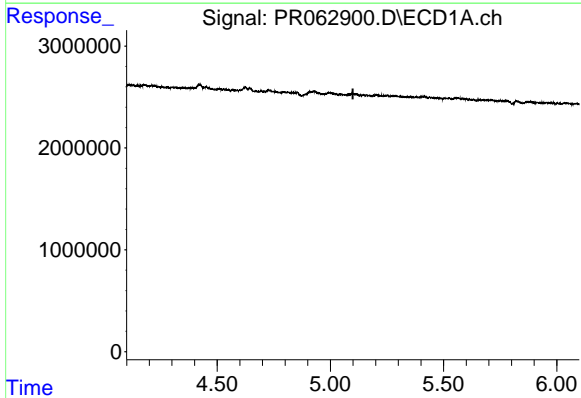
R.T.: 4.931 min  
 Delta R.T.: -0.066 min  
 Response: 688706  
 Conc: 9.92 ng/ml

Instrument :  
 ECD\_R  
 ClientSampleId :



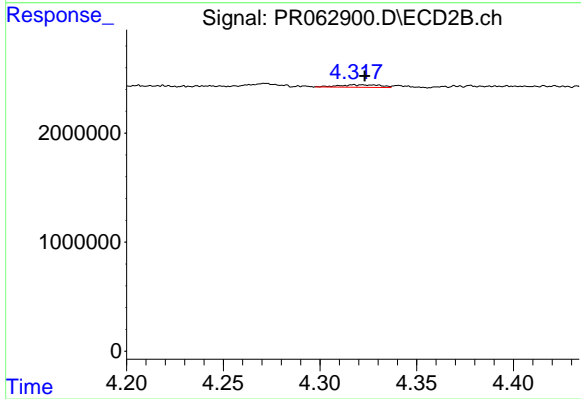
#5 AR-1016-3

R.T.: 4.272 min  
 Delta R.T.: -0.001 min  
 Response: 243055  
 Conc: 3.04 ng/ml



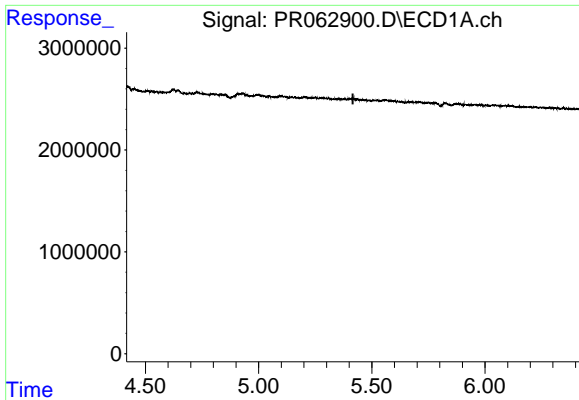
#6 AR-1016-4

R.T.: 0.000 min  
 Exp R.T. : 5.100 min  
 Response: 0  
 Conc: N.D.



#6 AR-1016-4

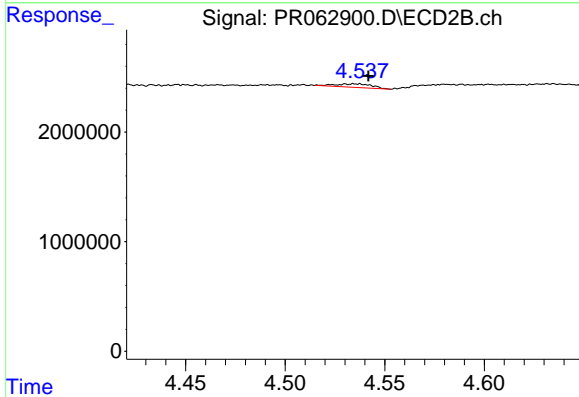
R.T.: 4.318 min  
 Delta R.T.: -0.006 min  
 Response: 338357  
 Conc: 5.22 ng/ml



#7 AR-1016-5

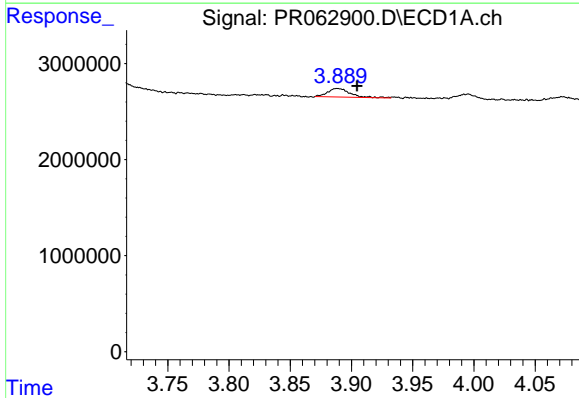
R.T.: 0.000 min  
 Exp R.T.: 5.416 min  
 Response: 0  
 Conc: N.D.

Instrument :  
 ECD\_R  
 ClientSampleId :



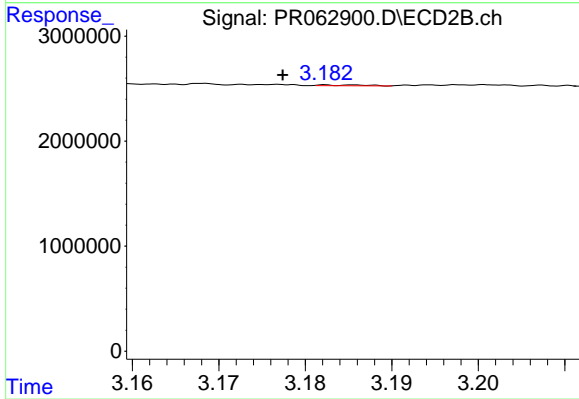
#7 AR-1016-5

R.T.: 4.535 min  
 Delta R.T.: -0.006 min  
 Response: 399631  
 Conc: 4.73 ng/ml



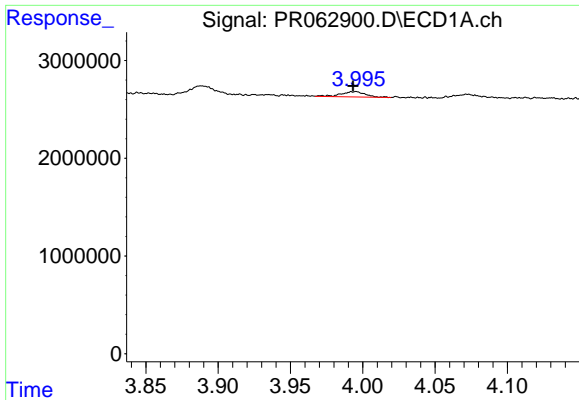
#8 AR-1221-1

R.T.: 3.888 min  
 Delta R.T.: -0.016 min  
 Response: 1128966  
 Conc: 40.34 ng/ml



#8 AR-1221-1

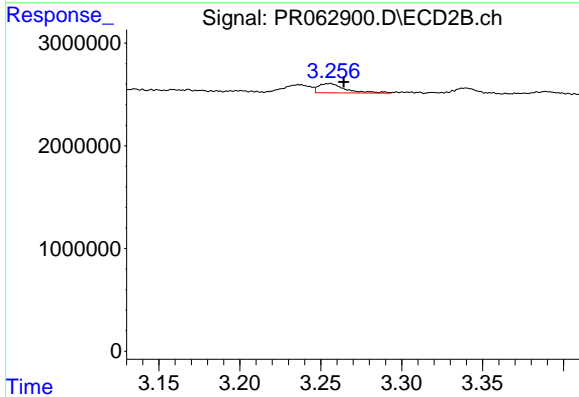
R.T.: 3.186 min  
 Delta R.T.: 0.008 min  
 Response: 31298  
 Conc: 0.82 ng/ml



#9 AR-1221-2

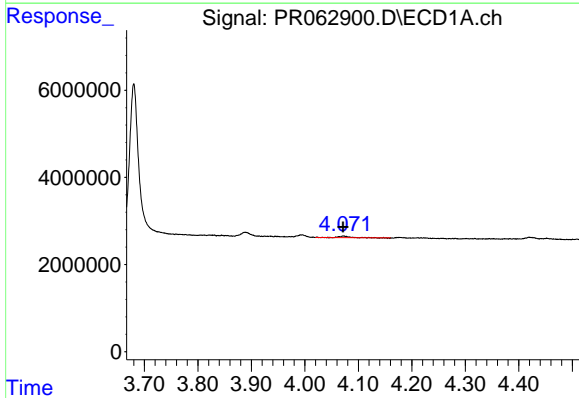
R.T.: 3.995 min  
 Delta R.T.: 0.002 min  
 Response: 642481  
 Conc: 32.88 ng/ml

Instrument :  
 ECD\_R  
 ClientSampleId :



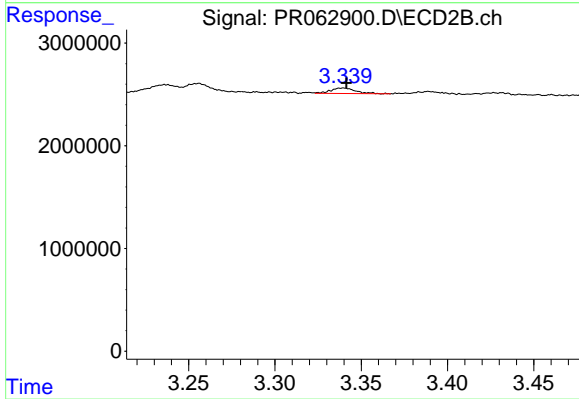
#9 AR-1221-2

R.T.: 3.255 min  
 Delta R.T.: -0.009 min  
 Response: 1021434  
 Conc: 36.90 ng/ml



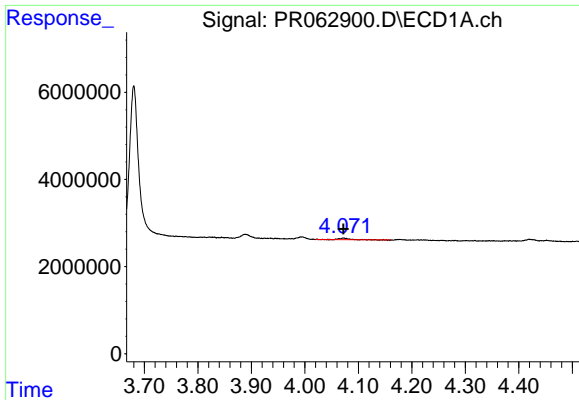
#10 AR-1221-3

R.T.: 4.073 min  
 Delta R.T.: 0.001 min  
 Response: 420982  
 Conc: 6.32 ng/ml



#10 AR-1221-3

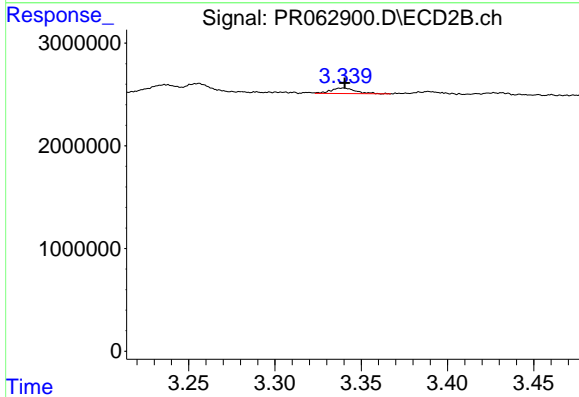
R.T.: 3.339 min  
 Delta R.T.: -0.002 min  
 Response: 547452  
 Conc: 6.05 ng/ml



#11 AR-1232-1

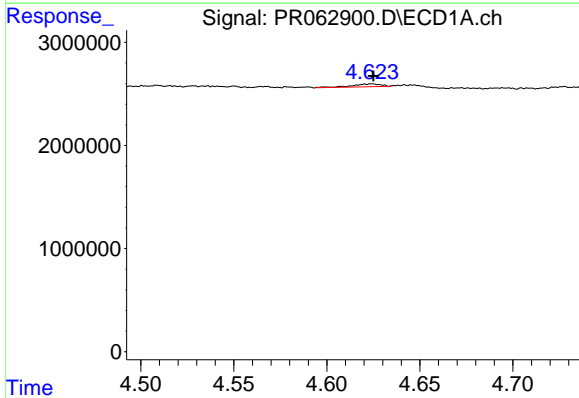
R.T.: 4.073 min  
 Delta R.T.: 0.000 min  
 Response: 420982  
 Conc: 7.63 ng/ml

Instrument :  
 ECD\_R  
 ClientSampleId :



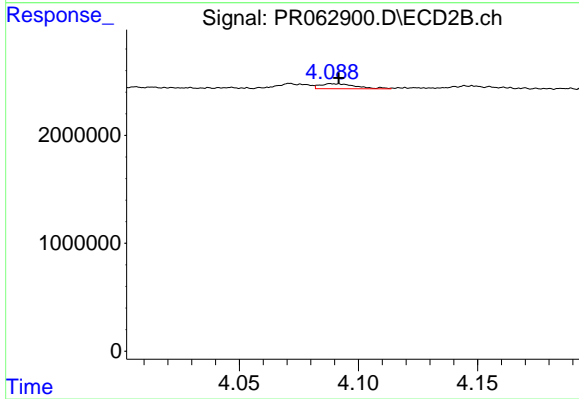
#11 AR-1232-1

R.T.: 3.339 min  
 Delta R.T.: -0.001 min  
 Response: 547452  
 Conc: 7.22 ng/ml



#12 AR-1232-2

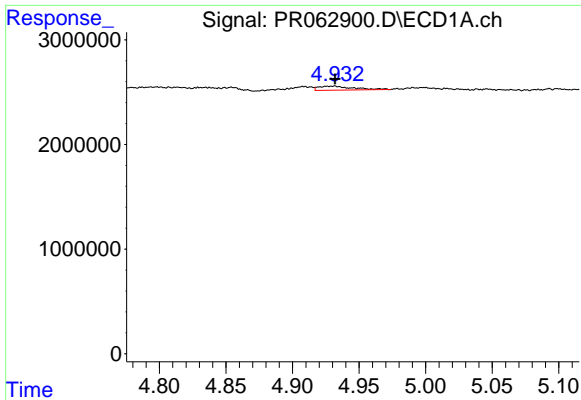
R.T.: 4.624 min  
 Delta R.T.: 0.000 min  
 Response: 293404  
 Conc: 11.11 ng/ml



#12 AR-1232-2

R.T.: 4.089 min  
 Delta R.T.: -0.002 min  
 Response: 493662  
 Conc: 7.24 ng/ml

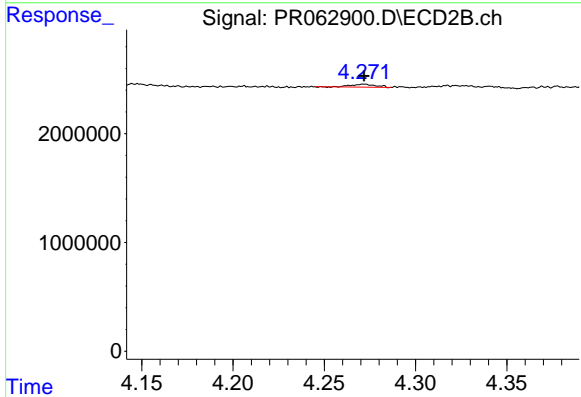




#13 AR-1232-3

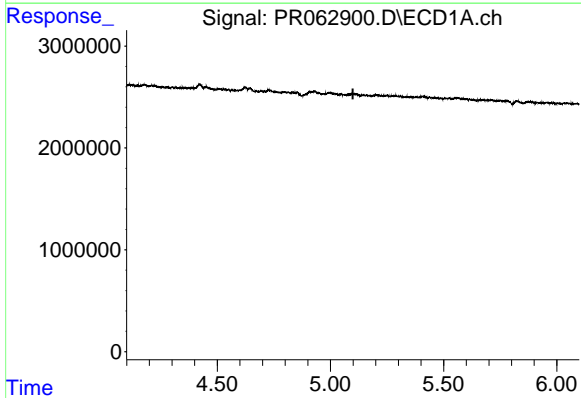
R.T.: 4.931 min  
 Delta R.T.: 0.000 min  
 Response: 688706  
 Conc: 13.56 ng/ml

Instrument :  
 ECD\_R  
 ClientSampleId :



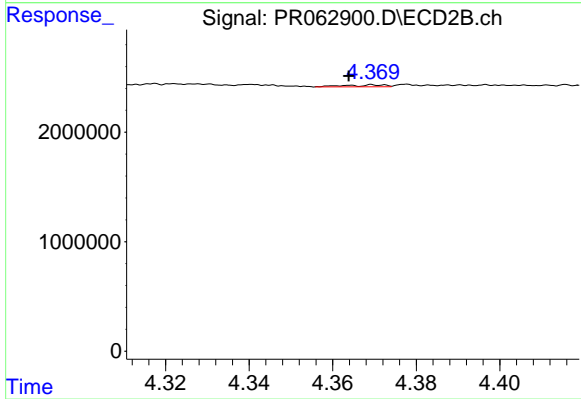
#13 AR-1232-3

R.T.: 4.272 min  
 Delta R.T.: 0.000 min  
 Response: 243055  
 Conc: 6.71 ng/ml



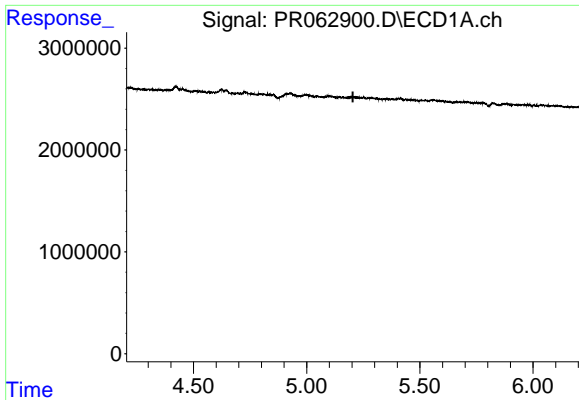
#14 AR-1232-4

R.T.: 0.000 min  
 Exp R.T. : 5.099 min  
 Response: 0  
 Conc: N.D.



#14 AR-1232-4

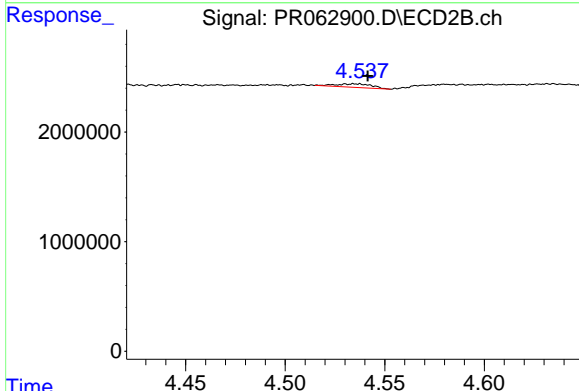
R.T.: 4.370 min  
 Delta R.T.: 0.006 min  
 Response: 113969  
 Conc: 3.42 ng/ml



#15 AR-1232-5

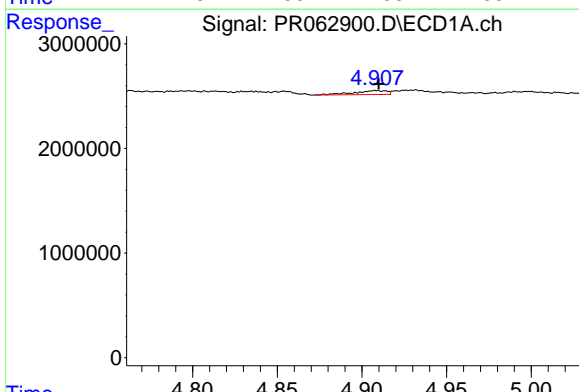
R.T.: 0.000 min  
 Exp R.T.: 5.204 min  
 Response: 0  
 Conc: N.D.

Instrument :  
 ECD\_R  
 ClientSampleId :



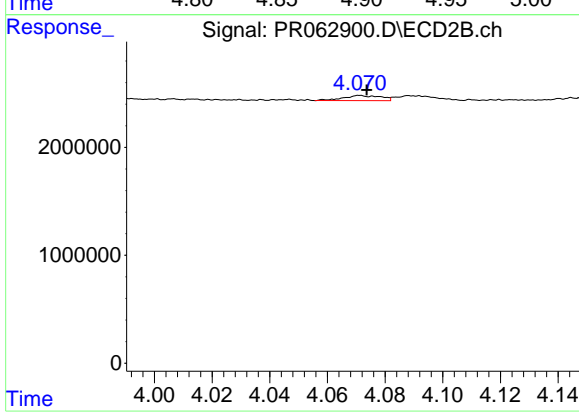
#15 AR-1232-5

R.T.: 4.535 min  
 Delta R.T.: -0.006 min  
 Response: 399631  
 Conc: 10.76 ng/ml



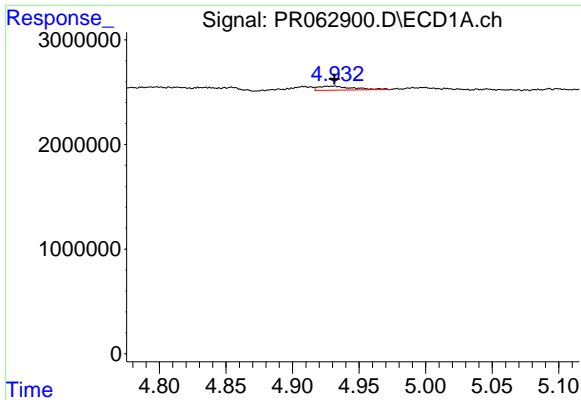
#16 AR-1242-1

R.T.: 4.908 min  
 Delta R.T.: -0.002 min  
 Response: 502703  
 Conc: 7.19 ng/ml



#16 AR-1242-1

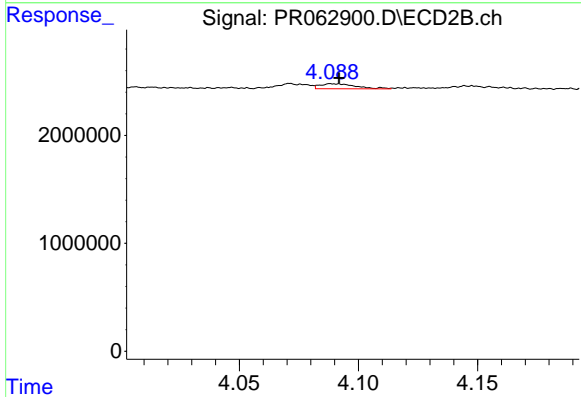
R.T.: 4.071 min  
 Delta R.T.: -0.002 min  
 Response: 428882  
 Conc: 4.43 ng/ml



#17 AR-1242-2

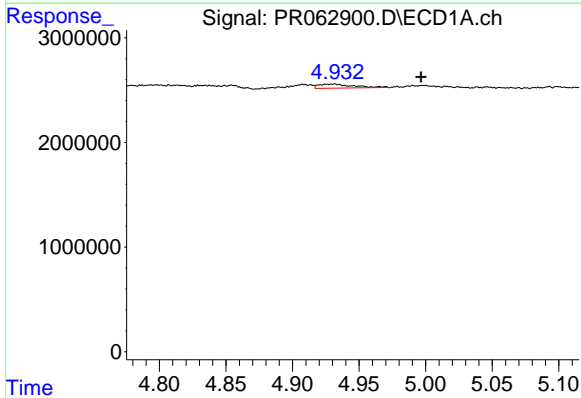
R.T.: 4.931 min  
 Delta R.T.: 0.000 min  
 Response: 688706  
 Conc: 6.90 ng/ml

Instrument :  
 ECD\_R  
 ClientSampleId :



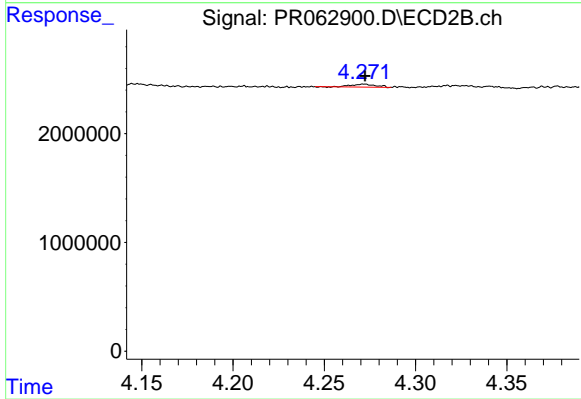
#17 AR-1242-2

R.T.: 4.089 min  
 Delta R.T.: -0.002 min  
 Response: 493662  
 Conc: 3.63 ng/ml



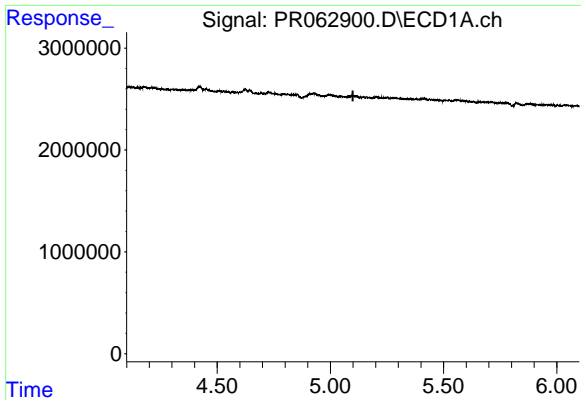
#18 AR-1242-3

R.T.: 4.931 min  
 Delta R.T.: -0.065 min  
 Response: 688706  
 Conc: 11.01 ng/ml



#18 AR-1242-3

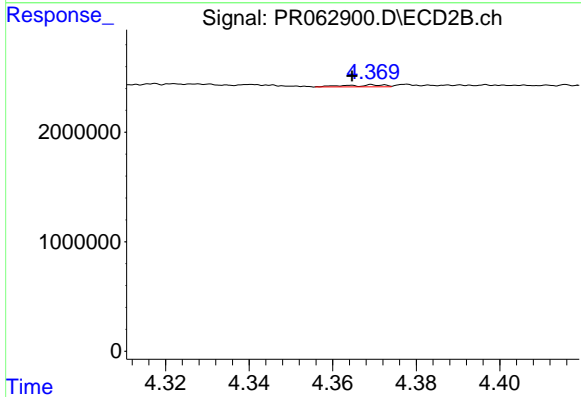
R.T.: 4.272 min  
 Delta R.T.: 0.000 min  
 Response: 243055  
 Conc: 3.28 ng/ml



#19 AR-1242-4

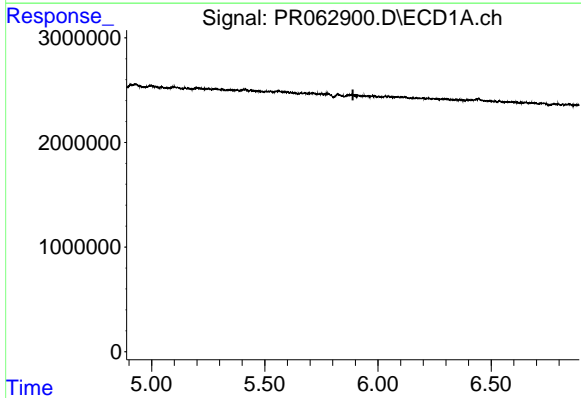
R.T.: 0.000 min  
 Exp R.T. : 5.100 min  
 Response: 0  
 Conc: N.D.

Instrument :  
 ECD\_R  
 ClientSampleId :



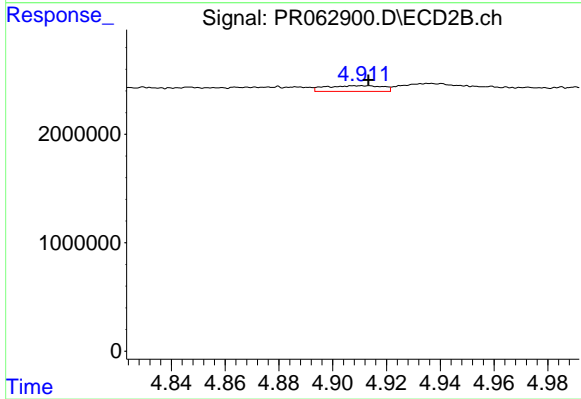
#19 AR-1242-4

R.T.: 4.370 min  
 Delta R.T.: 0.006 min  
 Response: 113969  
 Conc: 1.54 ng/ml



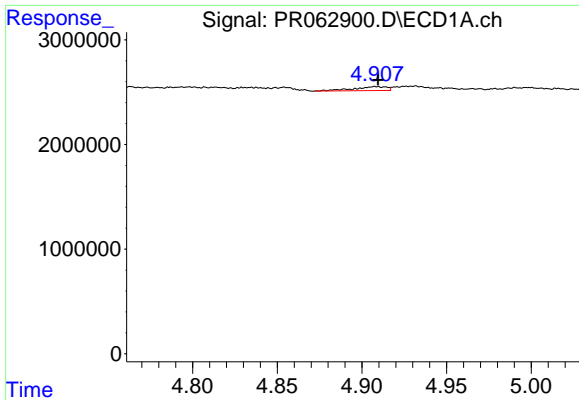
#20 AR-1242-5

R.T.: 0.000 min  
 Exp R.T. : 5.889 min  
 Response: 0  
 Conc: N.D.



#20 AR-1242-5

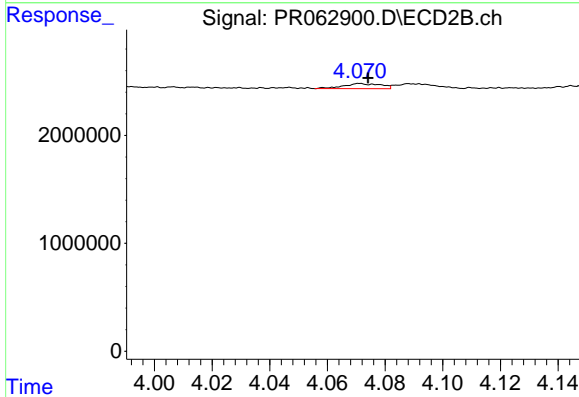
R.T.: 4.912 min  
 Delta R.T.: -0.001 min  
 Response: 771151  
 Conc: 8.22 ng/ml



#21 AR-1248-1

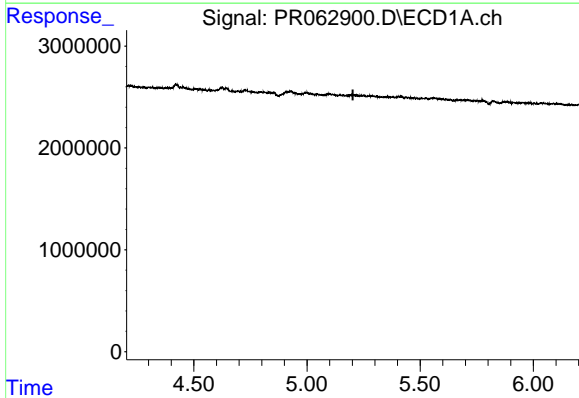
R.T.: 4.908 min  
 Delta R.T.: -0.001 min  
 Response: 502703  
 Conc: 9.88 ng/ml

Instrument :  
 ECD\_R  
 ClientSampleId :



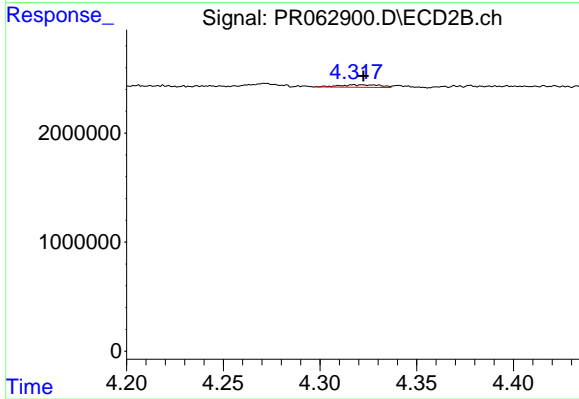
#21 AR-1248-1

R.T.: 4.071 min  
 Delta R.T.: -0.003 min  
 Response: 428882  
 Conc: 5.98 ng/ml



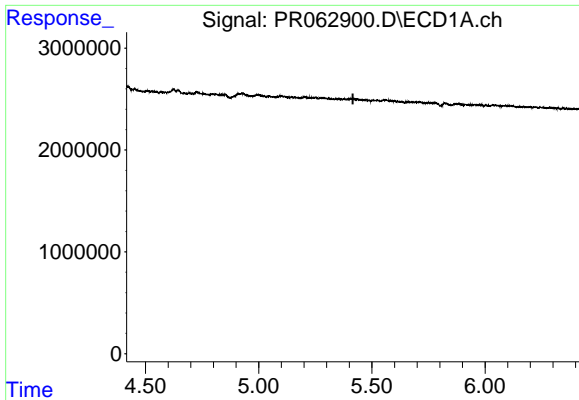
#22 AR-1248-2

R.T.: 0.000 min  
 Exp R.T. : 5.203 min  
 Response: 0  
 Conc: N.D.



#22 AR-1248-2

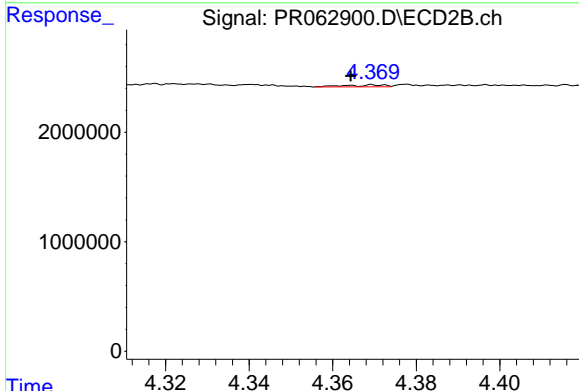
R.T.: 4.318 min  
 Delta R.T.: -0.005 min  
 Response: 338357  
 Conc: 3.29 ng/ml



#23 AR-1248-3

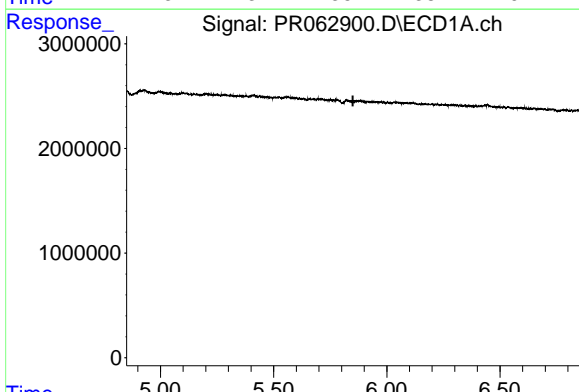
R.T.: 0.000 min  
 Exp R.T.: 5.416 min  
 Response: 0  
 Conc: N.D.

Instrument :  
 ECD\_R  
 ClientSampleId :



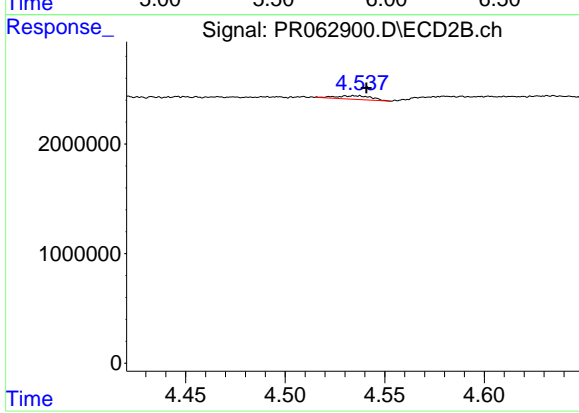
#23 AR-1248-3

R.T.: 4.370 min  
 Delta R.T.: 0.006 min  
 Response: 113969  
 Conc: 1.08 ng/ml



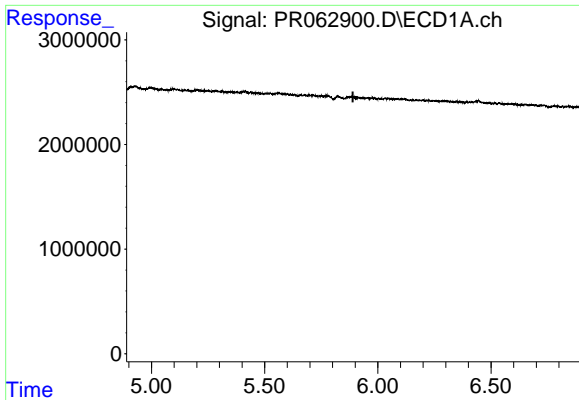
#24 AR-1248-4

R.T.: 0.000 min  
 Exp R.T.: 5.850 min  
 Response: 0  
 Conc: N.D.



#24 AR-1248-4

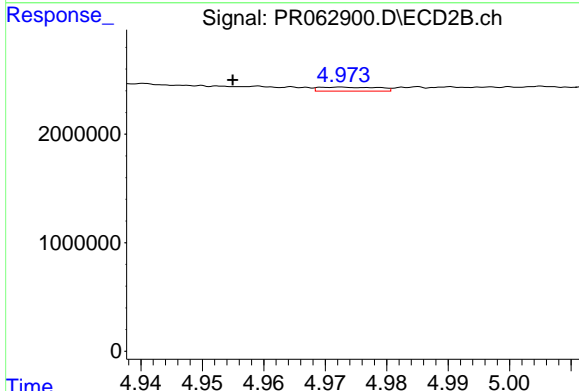
R.T.: 4.535 min  
 Delta R.T.: -0.005 min  
 Response: 399631  
 Conc: 3.16 ng/ml



#25 AR-1248-5

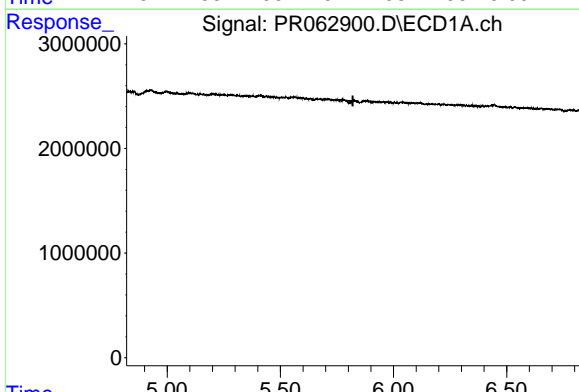
R.T.: 0.000 min  
 Exp R.T.: 5.890 min  
 Response: 0  
 Conc: N.D.

Instrument : ECD\_R  
 ClientSampleId :



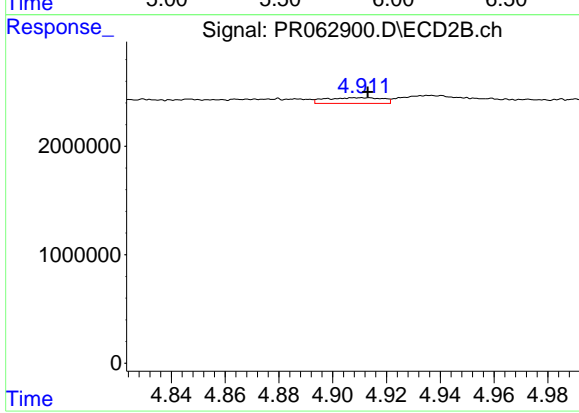
#25 AR-1248-5

R.T.: 4.972 min  
 Delta R.T.: 0.017 min  
 Response: 244885  
 Conc: 1.93 ng/ml



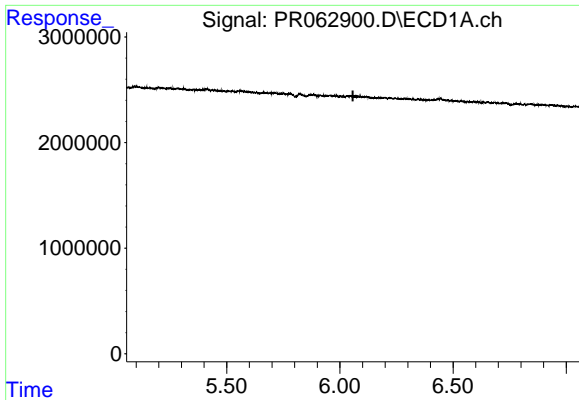
#26 AR-1254-1

R.T.: 0.000 min  
 Exp R.T.: 5.821 min  
 Response: 0  
 Conc: N.D.



#26 AR-1254-1

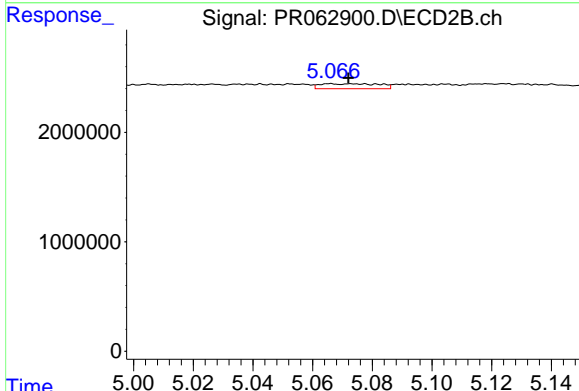
R.T.: 4.912 min  
 Delta R.T.: 0.000 min  
 Response: 771151  
 Conc: 4.12 ng/ml



#27 AR-1254-2

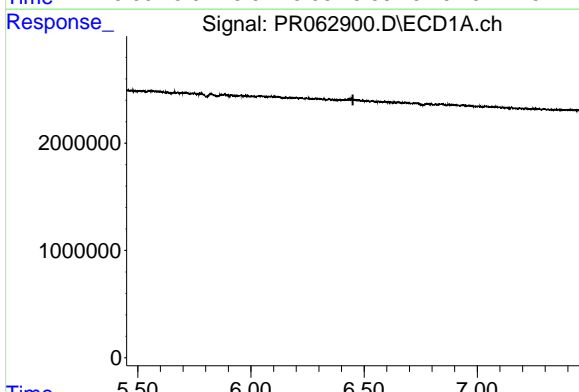
R.T.: 0.000 min  
 Exp R.T.: 6.058 min  
 Response: 0  
 Conc: N.D.

Instrument :  
 ECD\_R  
 ClientSampleId :



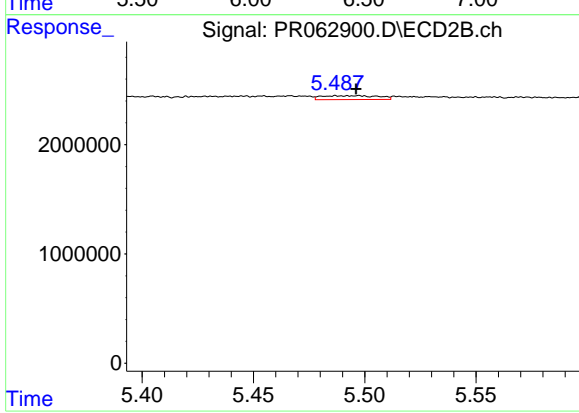
#27 AR-1254-2

R.T.: 5.066 min  
 Delta R.T.: -0.006 min  
 Response: 633156  
 Conc: 3.82 ng/ml



#28 AR-1254-3

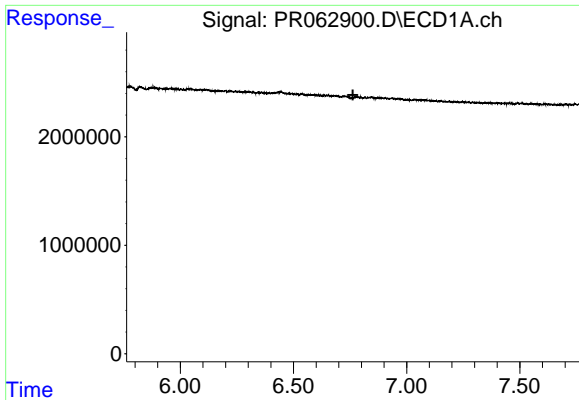
R.T.: 0.000 min  
 Exp R.T.: 6.450 min  
 Response: 0  
 Conc: N.D.



#28 AR-1254-3

R.T.: 5.498 min  
 Delta R.T.: 0.001 min  
 Response: 632579  
 Conc: 2.33 ng/ml

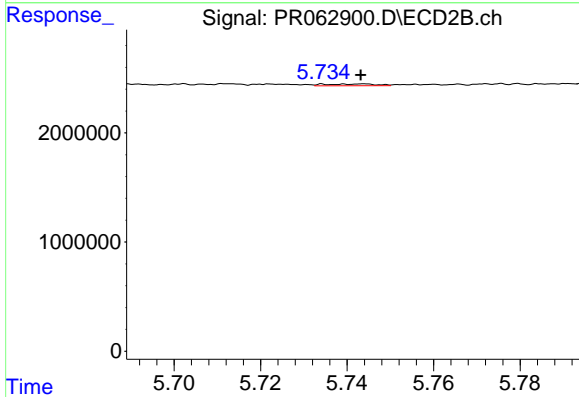




#29 AR-1254-4

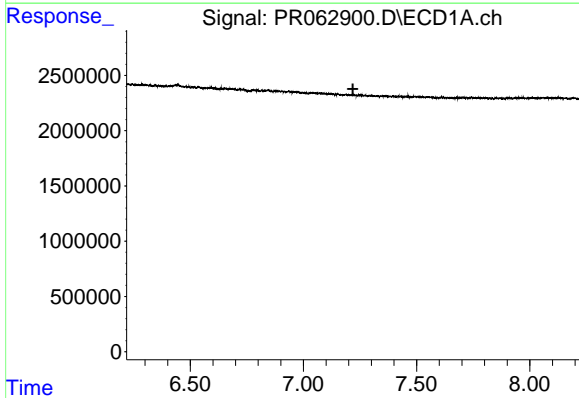
R.T.: 0.000 min  
 Exp R.T. : 6.762 min  
 Response: 0  
 Conc: N.D.

Instrument :  
 ECD\_R  
 ClientSampleId :



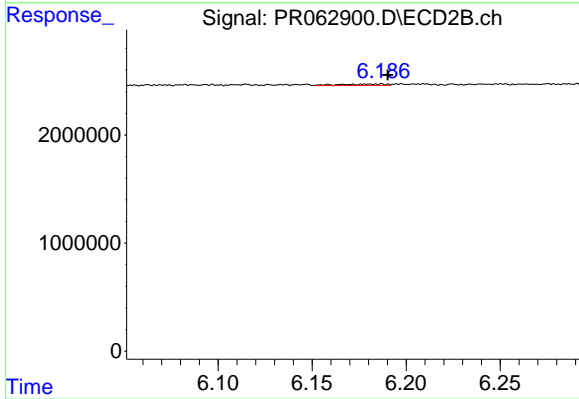
#29 AR-1254-4

R.T.: 5.744 min  
 Delta R.T.: 0.000 min  
 Response: 138056  
 Conc: 0.79 ng/ml



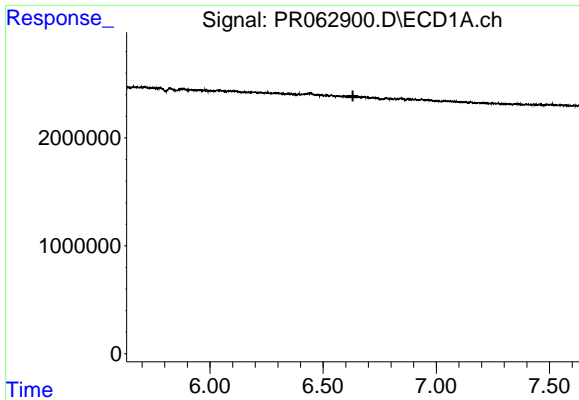
#30 AR-1254-5

R.T.: 0.000 min  
 Exp R.T. : 7.219 min  
 Response: 0  
 Conc: N.D.



#30 AR-1254-5

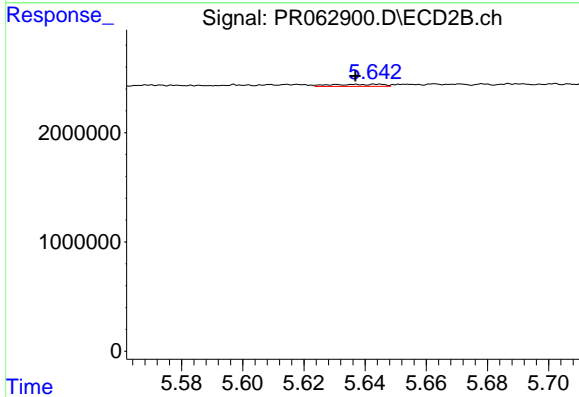
R.T.: 6.179 min  
 Delta R.T.: -0.012 min  
 Response: 212211  
 Conc: 0.83 ng/ml



#31 AR-1260-1

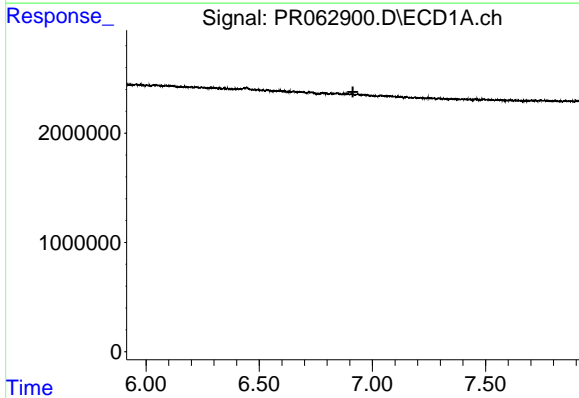
R.T.: 0.000 min  
 Exp R.T. : 6.631 min  
 Response: 0  
 Conc: N.D.

Instrument :  
 ECD\_R  
 ClientSampleId :



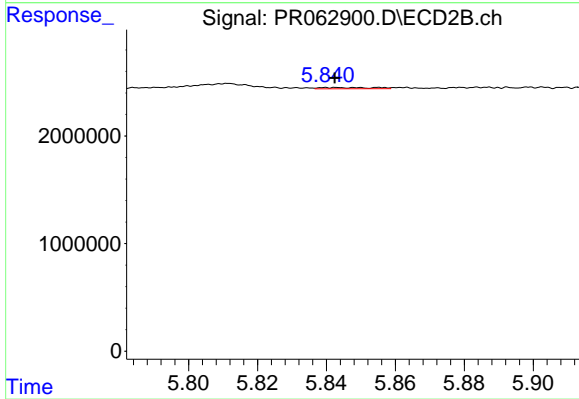
#31 AR-1260-1

R.T.: 5.637 min  
 Delta R.T.: 0.000 min  
 Response: 233668  
 Conc: 1.26 ng/ml



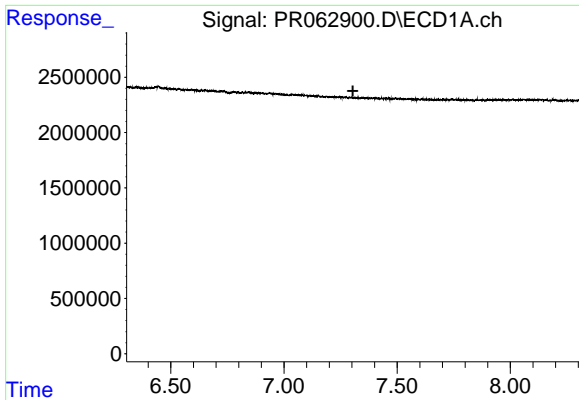
#32 AR-1260-2

R.T.: 0.000 min  
 Exp R.T. : 6.914 min  
 Response: 0  
 Conc: N.D.



#32 AR-1260-2

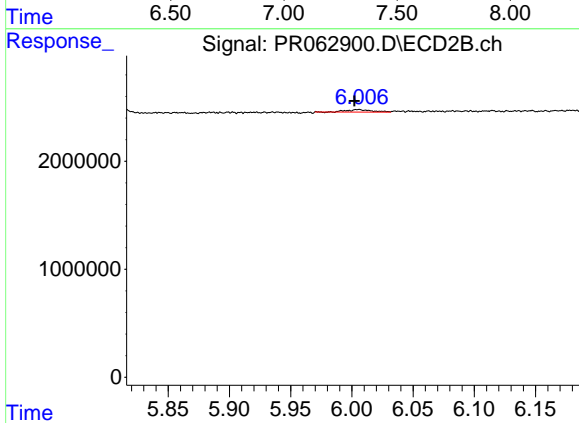
R.T.: 5.843 min  
 Delta R.T.: 0.000 min  
 Response: 127581  
 Conc: 0.57 ng/ml



#33 AR-1260-3

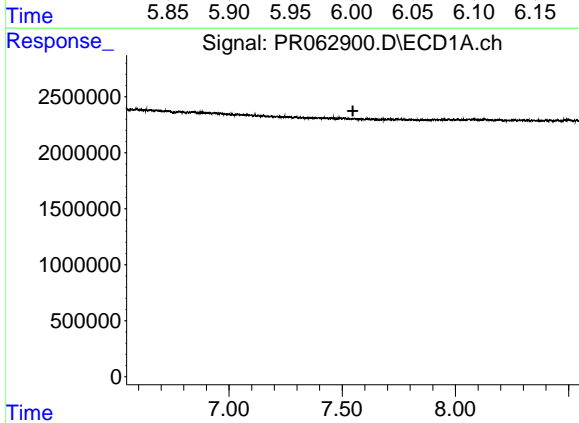
R.T.: 0.000 min  
 Exp R.T.: 7.304 min  
 Response: 0  
 Conc: N.D.

Instrument :  
 ECD\_R  
 ClientSampleId :



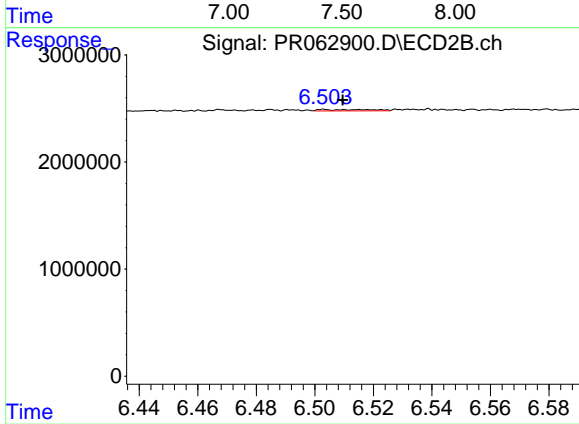
#33 AR-1260-3

R.T.: 6.005 min  
 Delta R.T.: 0.003 min  
 Response: 319648  
 Conc: 1.44 ng/ml



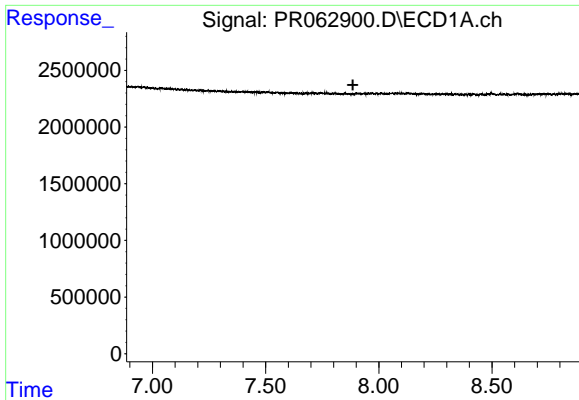
#34 AR-1260-4

R.T.: 0.000 min  
 Exp R.T.: 7.547 min  
 Response: 0  
 Conc: N.D.



#34 AR-1260-4

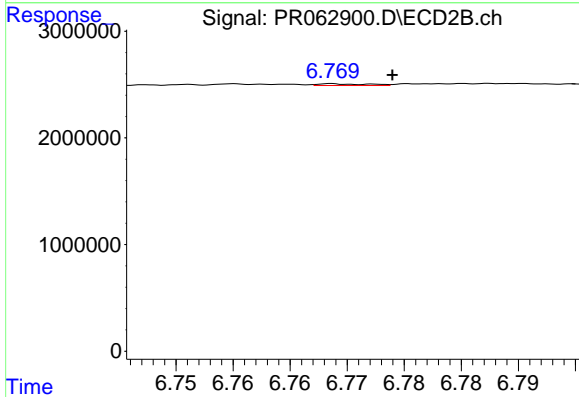
R.T.: 6.503 min  
 Delta R.T.: -0.006 min  
 Response: 157115  
 Conc: 0.84 ng/ml



#35 AR-1260-5

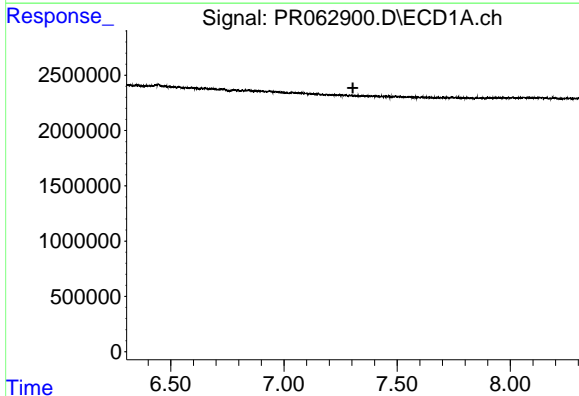
R.T.: 0.000 min  
 Exp R.T. : 7.885 min  
 Response: 0  
 Conc: N.D.

Instrument :  
 ECD\_R  
 ClientSampleId :



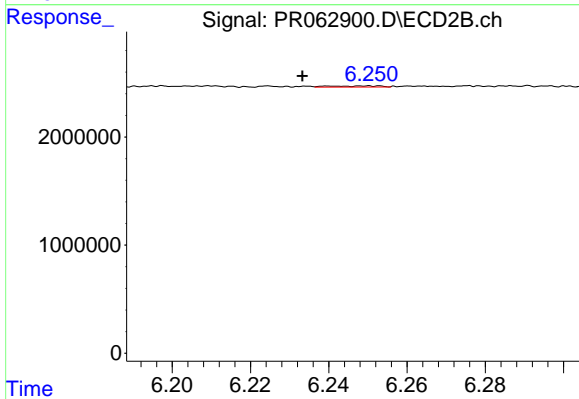
#35 AR-1260-5

R.T.: 6.769 min  
 Delta R.T.: -0.005 min  
 Response: 48771  
 Conc: 0.11 ng/ml



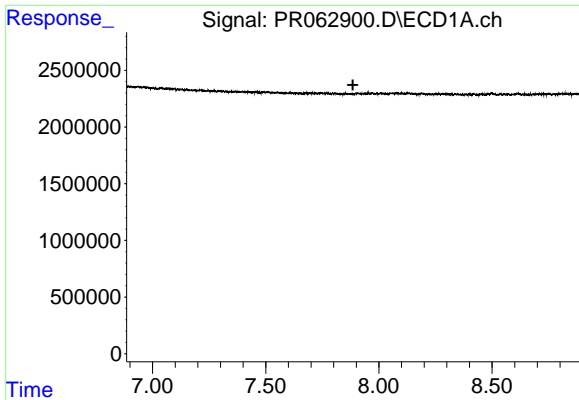
#36 AR-1262-1

R.T.: 0.000 min  
 Exp R.T. : 7.304 min  
 Response: 0  
 Conc: N.D.



#36 AR-1262-1

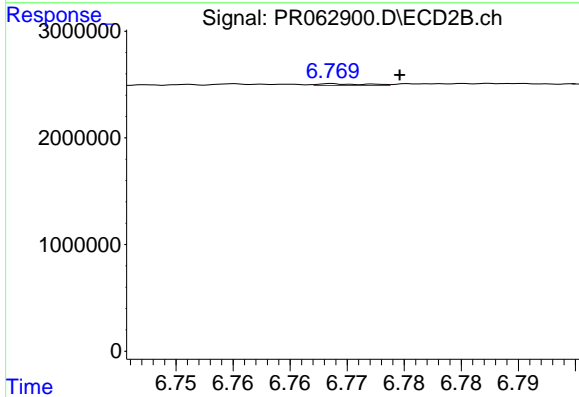
R.T.: 6.240 min  
 Delta R.T.: 0.007 min  
 Response: 97531  
 Conc: 0.37 ng/ml



#37 AR-1262-2

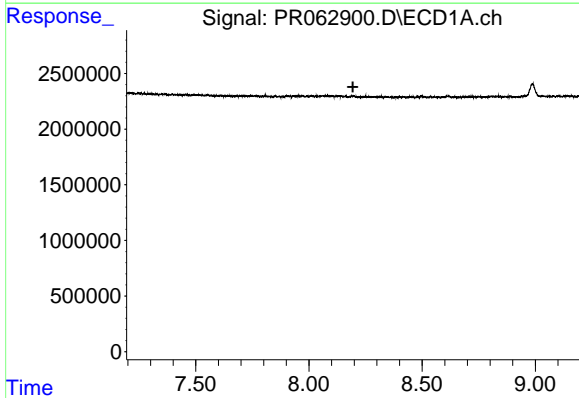
R.T.: 0.000 min  
 Exp R.T.: 7.885 min  
 Response: 0  
 Conc: N.D.

Instrument :  
 ECD\_R  
 ClientSampleId :



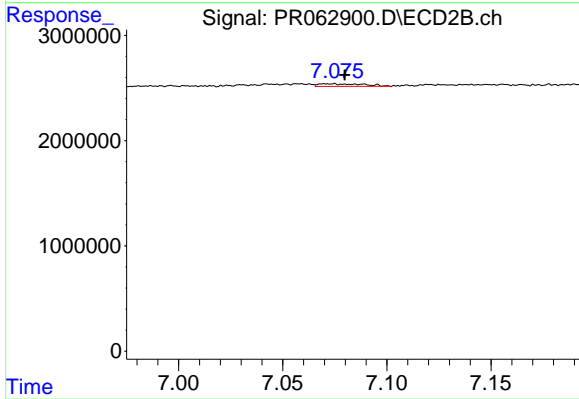
#37 AR-1262-2

R.T.: 6.769 min  
 Delta R.T.: -0.005 min  
 Response: 48771  
 Conc: 0.10 ng/ml



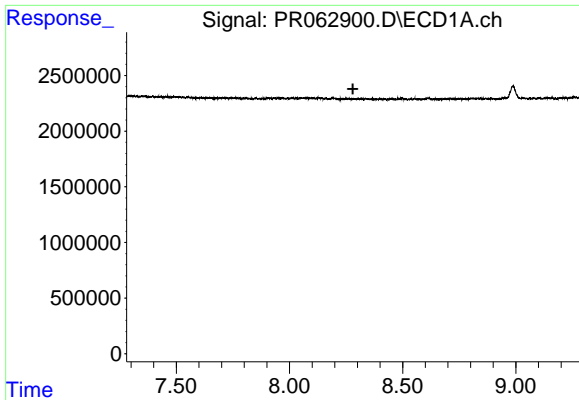
#38 AR-1262-3

R.T.: 0.000 min  
 Exp R.T.: 8.194 min  
 Response: 0  
 Conc: N.D.



#38 AR-1262-3

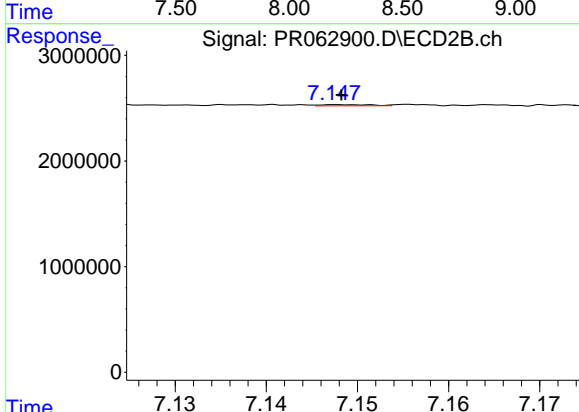
R.T.: 7.071 min  
 Delta R.T.: -0.009 min  
 Response: 370329  
 Conc: 1.88 ng/ml



#39 AR-1262-4

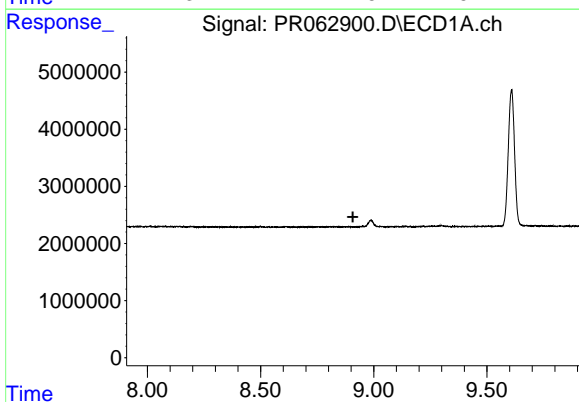
R.T.: 0.000 min  
 Exp R.T.: 8.280 min  
 Response: 0  
 Conc: N.D.

Instrument : ECD\_R  
 ClientSampleId :



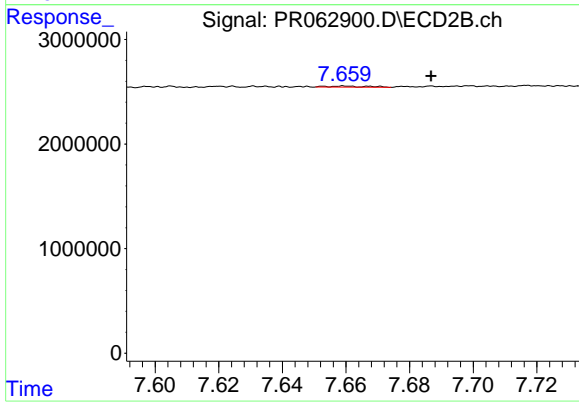
#39 AR-1262-4

R.T.: 7.148 min  
 Delta R.T.: 0.000 min  
 Response: 44159  
 Conc: 0.12 ng/ml



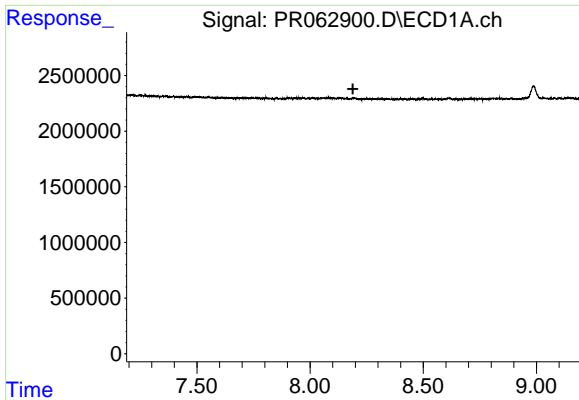
#40 AR-1262-5

R.T.: 0.000 min  
 Exp R.T.: 8.908 min  
 Response: 0  
 Conc: N.D.



#40 AR-1262-5

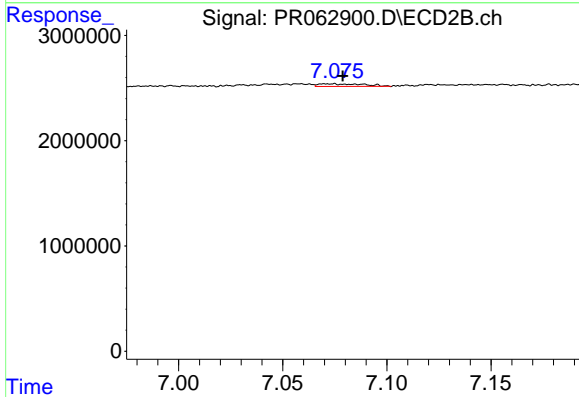
R.T.: 7.660 min  
 Delta R.T.: -0.027 min  
 Response: 85289  
 Conc: 0.47 ng/ml



#41 AR-1268-1

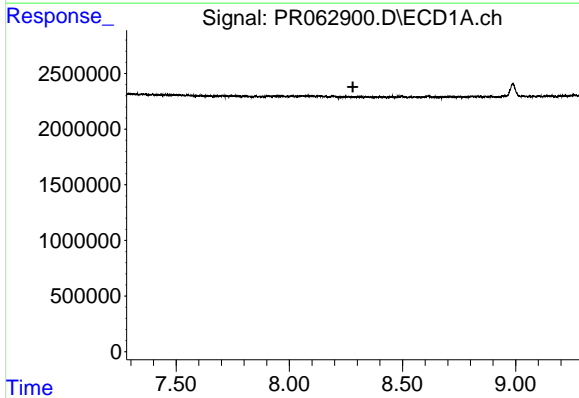
R.T.: 0.000 min  
 Exp R.T.: 8.189 min  
 Response: 0  
 Conc: N.D.

Instrument :  
 ECD\_R  
 ClientSampleId :



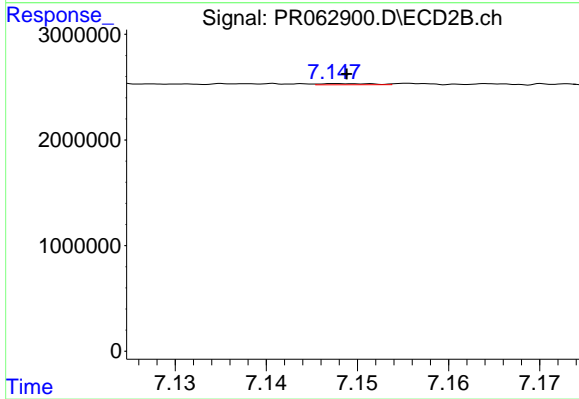
#41 AR-1268-1

R.T.: 7.071 min  
 Delta R.T.: -0.008 min  
 Response: 370329  
 Conc: 0.64 ng/ml



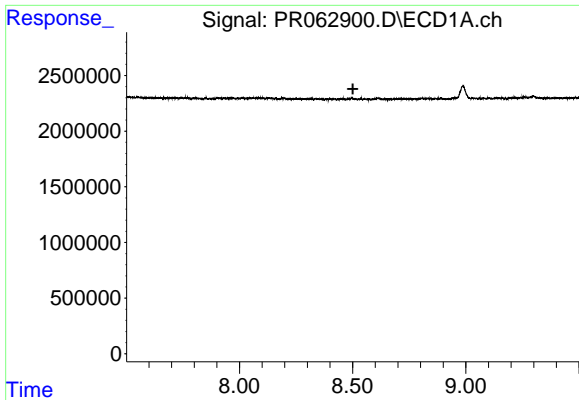
#42 AR-1268-2

R.T.: 0.000 min  
 Exp R.T.: 8.281 min  
 Response: 0  
 Conc: N.D.



#42 AR-1268-2

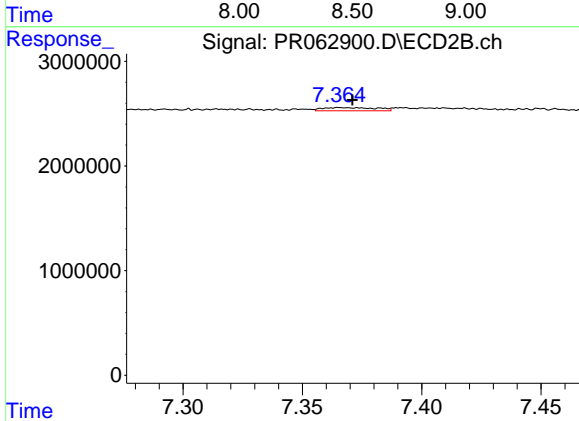
R.T.: 7.148 min  
 Delta R.T.: 0.000 min  
 Response: 44159  
 Conc: 0.08 ng/ml



#43 AR-1268-3

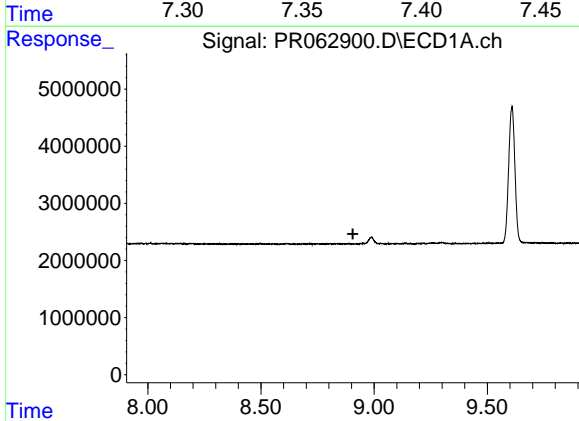
R.T.: 0.000 min  
 Exp R.T.: 8.501 min  
 Response: 0  
 Conc: N.D.

Instrument :  
 ECD\_R  
 ClientSampleId :



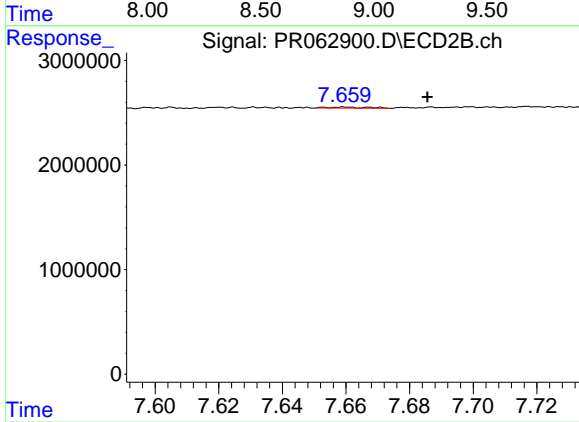
#43 AR-1268-3

R.T.: 7.366 min  
 Delta R.T.: -0.005 min  
 Response: 486923  
 Conc: 1.03 ng/ml



#44 AR-1268-4

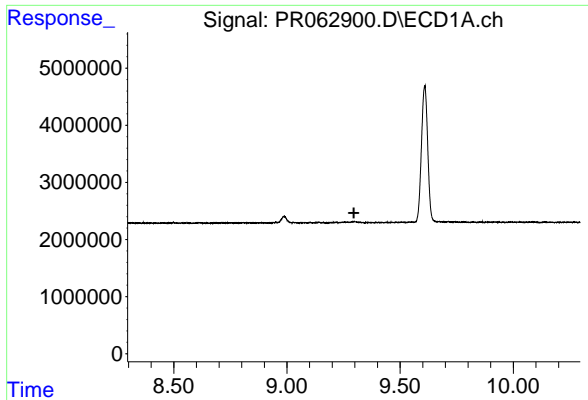
R.T.: 0.000 min  
 Exp R.T.: 8.906 min  
 Response: 0  
 Conc: N.D.



#44 AR-1268-4

R.T.: 7.660 min  
 Delta R.T.: -0.026 min  
 Response: 85289  
 Conc: 0.42 ng/ml

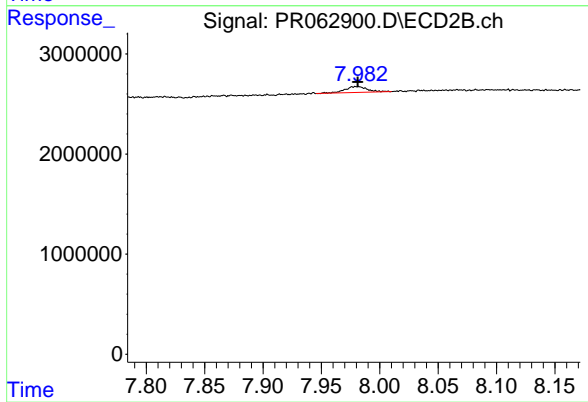




#45 AR-1268-5

R.T.: 0.000 min  
 Exp R.T.: 9.296 min  
 Response: 0  
 Conc: N.D.

Instrument :  
 ECD\_R  
 ClientSampleId :



#45 AR-1268-5

R.T.: 7.981 min  
 Delta R.T.: 0.000 min  
 Response: 799378  
 Conc: 0.54 ng/ml