

Data Path : Z:\pestpcbsrv\HPCHEM1\ECD\_R\Data\PR083118\  
 Data File : PR031715.D  
 Signal(s) : Signal #1: ECD1A.ch Signal #2: ECD2B.ch  
 Acq On : 31 Aug 2018 19:11  
 Operator : SM\SJ  
 Sample : J4729-01  
 Misc :  
 ALS Vial : 12 Sample Multiplier: 1

Instrument :  
 ECD\_R  
 ClientSampleId :  
 082918-JETT-E-D-B

Integration File signal 1: autoint1.e  
 Integration File signal 2: autoint2.e  
 Quant Time: Sep 01 03:37:59 2018  
 Quant Method : Z:\pestpcbsrv\HPCHEM1\ECD\_R\Method\PR083018.M  
 Quant Title : GC EXTRACTABLES  
 QLast Update : Fri Aug 31 07:21:10 2018  
 Response via : Initial Calibration  
 Integrator: ChemStation

Volume Inj. : 2 µl  
 Signal #1 Phase : ZB-MR1 Signal #2 Phase: ZB-MR2  
 Signal #1 Info : 30Mx0.32mmx 0.50µ Signal #2 Info : 30M x 0.32mm x 0.25µm

Compound	RT#1	RT#2	Resp#1	Resp#2	ng/ml	ng/ml
-----						
System Monitoring Compounds						
1) SA Tetrachlo...	4.532	3.672	212.5E6	440.6E6	15.589	17.724
2) SA Decachlor...	10.274	8.522	422.7E6	272.4E6	17.020	17.083

Target Compounds

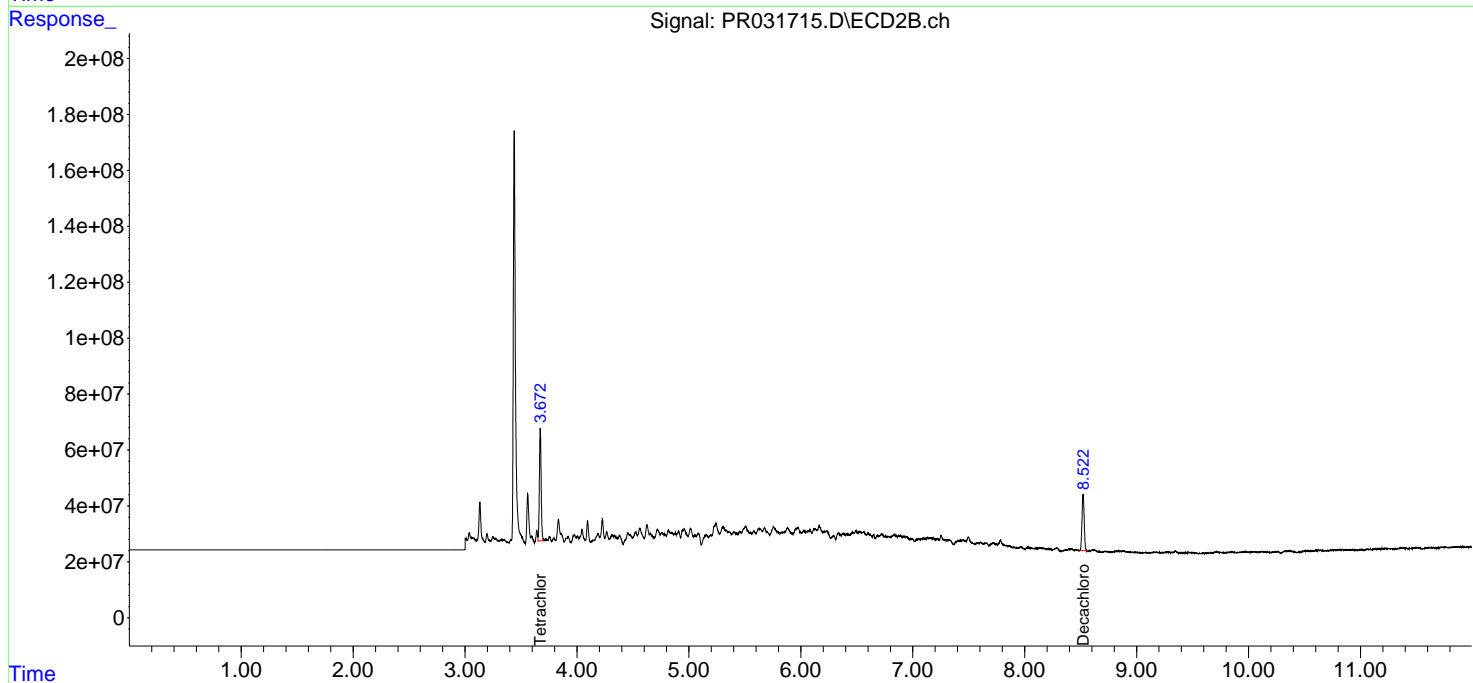
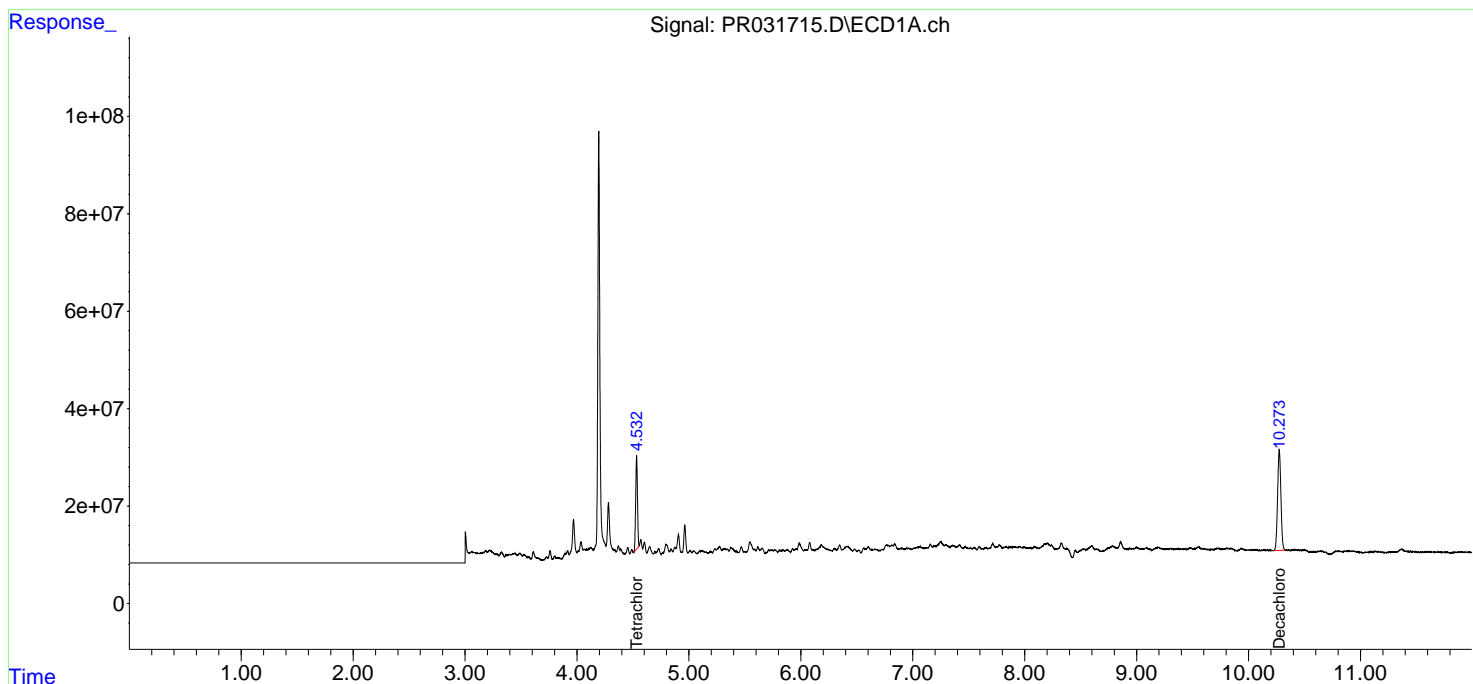
(f)=RT Delta > 1/2 Window (#)=Amounts differ by > 25% (m)=manual int.

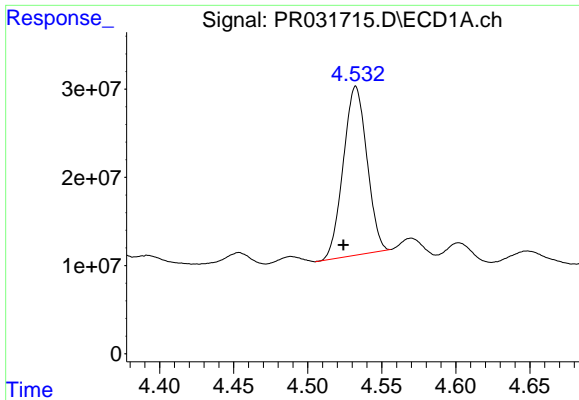
Data Path : Z:\pestpcbsrv\HPCHEM1\ECD\_R\Data\PR083118\  
 Data File : PR031715.D  
 Signal(s) : Signal #1: ECD1A.ch Signal #2: ECD2B.ch  
 Acq On : 31 Aug 2018 19:11  
 Operator : SM\SJ  
 Sample : J4729-01  
 Misc :  
 ALS Vial : 12 Sample Multiplier: 1

Instrument :  
 ECD\_R  
 ClientSampleId :  
 082918-JETT-E-D-B

Integration File signal 1: autoint1.e  
 Integration File signal 2: autoint2.e  
 Quant Time: Sep 01 03:37:59 2018  
 Quant Method : Z:\pestpcbsrv\HPCHEM1\ECD\_R\Method\PR083018.M  
 Quant Title : GC EXTRACTABLES  
 QLast Update : Fri Aug 31 07:21:10 2018  
 Response via : Initial Calibration  
 Integrator: ChemStation

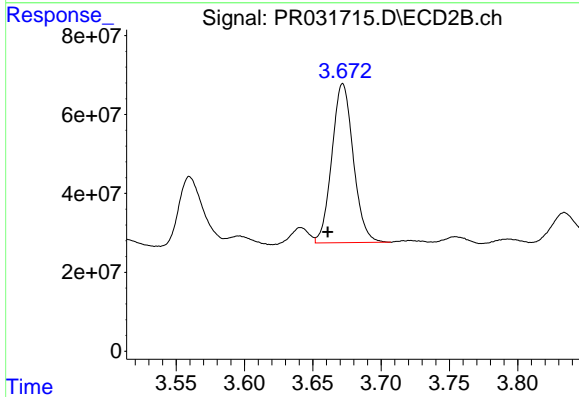
Volume Inj. : 2 µl  
 Signal #1 Phase : ZB-MR1 Signal #2 Phase: ZB-MR2  
 Signal #1 Info : 30Mx0.32mmx 0.50µm Signal #2 Info : 30M x 0.32mm x 0.25µm



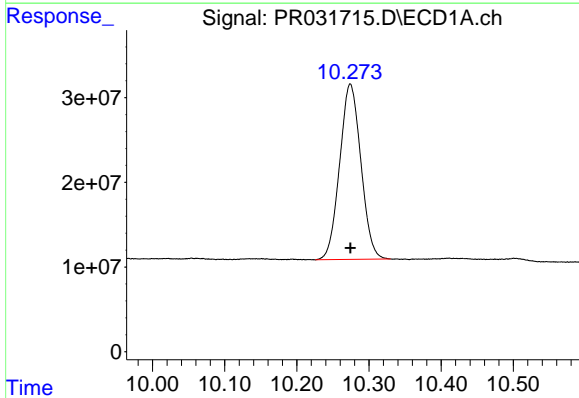


#1 Tetrachloro-m-xylene  
 R.T.: 4.532 min  
 Delta R.T.: 0.008 min  
 Response: 212498289  
 Conc: 15.59 ng/ml

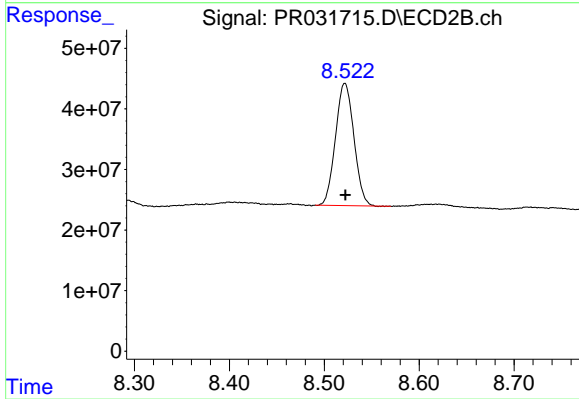
Instrument :  
 ECD\_R  
 ClientSampleId :  
 082918-JETT-E-D-B



#1 Tetrachloro-m-xylene  
 R.T.: 3.672 min  
 Delta R.T.: 0.011 min  
 Response: 440642388  
 Conc: 17.72 ng/ml



#2 Decachlorobiphenyl  
 R.T.: 10.274 min  
 Delta R.T.: 0.000 min  
 Response: 422696301  
 Conc: 17.02 ng/ml



#2 Decachlorobiphenyl  
 R.T.: 8.522 min  
 Delta R.T.: 0.000 min  
 Response: 272434181  
 Conc: 17.08 ng/ml