

Data Path : Z:\pestpcbsrv\HPCHEM1\ECD_R\Data\PR090222\
 Data File : PR056267.D
 Signal(s) : Signal #1: ECD1A.ch Signal #2: ECD2B.ch
 Acq On : 02 Sep 2022 15:15
 Operator : AJ\MA
 Sample : AR1248CCC400
 Misc :
 ALS Vial : 5 Sample Multiplier: 1

Instrument :
 ECD_R
 ClientSampleId :

Integration File signal 1: autoint1.e
 Integration File signal 2: autoint2.e
 Quant Time: Sep 02 18:09:35 2022
 Quant Method : Z:\pestpcbsrv\HPCHEM1\ECD_R\Method\PR081022CLP.M
 Quant Title : GC EXTRACTABLES
 QLast Update : Wed Aug 10 07:34:29 2022
 Response via : Initial Calibration
 Integrator: ChemStation

Volume Inj. : 1 µl
 Signal #1 Phase : ZB MR1 Signal #2 Phase: ZB MR2
 Signal #1 Info : 30Mx0.32mmx 0.5µm Signal #2 Info : 30M x 0.32mm x 0.25µm

Compound	RT#1	RT#2	Resp#1	Resp#2	ng/ml	ng/ml

System Monitoring Compounds						
1) SA Tetrachlo...	3.626	2.897	107.6E6	40919127	22.857	18.393
2) SA Decachlor...	9.514	8.106	78979921	67893669	47.432	38.952
Target Compounds						
3) L1 AR-1016-1	4.847	4.001	33656316	15522365	271.631	211.454
4) L1 AR-1016-2	4.869	4.019	39847201	16731518	227.872	164.279 #
5) L1 AR-1016-3	4.933	4.196	19454107	10720212	180.940	194.627
6) L1 AR-1016-4	5.034	4.246	20219025	21075649	235.422	508.331 #
7) L1 AR-1016-5	5.351	4.461	43754871	26483999	558.341	481.831
8) L2 AR-1221-1	3.845	3.119	596599	281531	11.372	11.513
9) L2 AR-1221-2	3.937	3.197	1915716	503034	52.993	29.596 #
10) L2 AR-1221-3	4.014	3.281	3382265	1234144	29.346	21.389 #
11) L3 AR-1232-1	4.014	3.281	3382265	1234144	33.833	25.002 #
12) L3 AR-1232-2	4.562	4.019	15203380	16731518	316.330	360.770
13) L3 AR-1232-3	4.869	4.196	39847201	10720212	482.839	442.767
14) L3 AR-1232-4	5.034	4.287	20219025	21740603	505.383	1049.164 #
15) L3 AR-1232-5	5.138	4.461	38957609	26483999	1354.891	1148.882
16) L4 AR-1242-1	4.847	4.001	33656316	15522365	310.614	256.734
17) L4 AR-1242-2	4.869	4.019	39847201	16731518	263.237	198.271
18) L4 AR-1242-3	4.933	4.196	19454107	10720212	206.861	236.377
19) L4 AR-1242-4	5.034	4.287	20219025	21740603	271.540	514.451 #
20) L4 AR-1242-5	5.823	4.828	44273101	37414328	685.105	684.781
21) L5 AR-1248-1	4.847	4.001	33656316	15522365	417.308	342.595
22) L5 AR-1248-2	5.138	4.246	38957609	21075649	394.756	347.214
23) L5 AR-1248-3	5.351	4.287	43754871	21740603	394.407	349.808
24) L5 AR-1248-4	5.784	4.461	45635754	26483999	417.461	352.953
25) L5 AR-1248-5	5.823	4.869	44273101	27244267	413.590	353.851
26) L6 AR-1254-1	5.753	4.828	35472036	37414328	326.363	331.631
27) L6 AR-1254-2	5.991	4.985	42278832	10912925	266.145	112.071 #
28) L6 AR-1254-3	6.383	5.403	22155099	17569782	138.295	110.681
29) L6 AR-1254-4	6.695	5.648	16012316	11738452	136.435	115.036
30) L6 AR-1254-5	7.151	6.089	3889913	3565166	32.201	24.783
31) L7 AR-1260-1	6.563	5.550	2713273	8519107	23.908	79.500 #
32) L7 AR-1260-2	6.845	5.746	1942516	1164017	14.911	8.995 #
33) L7 AR-1260-3	7.212	5.899	763995	1805550	8.043	14.720 #
34) L7 AR-1260-4	7.460	6.407	1686634	285981	15.496	2.779 #
35) L7 AR-1260-5	7.819	6.671	967994	692143	4.694	2.875 #
36) L8 AR-1262-1	7.212	6.160	763995	343316	5.362	2.388 #
37) L8 AR-1262-2	7.819	6.671	967994	692143	3.953	2.620 #
38) L8 AR-1262-3	8.132	6.976	899366	378633	5.314	3.646 #
39) L8 AR-1262-4	8.201	7.040	459712	675595	5.408	3.442 #
40) L8 AR-1262-5	8.823	7.581	435535	200215	4.722	2.132 #
41) L9 AR-1268-1	8.132	6.976	899366	378633	3.103	1.210 #

Data Path : Z:\pestpcbsrv\HPCHEM1\ECD_R\Data\PR090222\
 Data File : PR056267.D
 Signal(s) : Signal #1: ECD1A.ch Signal #2: ECD2B.ch
 Acq On : 02 Sep 2022 15:15
 Operator : AJ\MA
 Sample : AR1248CCC400
 Misc :
 ALS Vial : 5 Sample Multiplier: 1

Instrument :
 ECD_R
 ClientSampleId :

Integration File signal 1: autoint1.e
 Integration File signal 2: autoint2.e
 Quant Time: Sep 02 18:09:35 2022
 Quant Method : Z:\pestpcbsrv\HPCHEM1\ECD_R\Method\PR081022CLP.M
 Quant Title : GC EXTRACTABLES
 QLast Update : Wed Aug 10 07:34:29 2022
 Response via : Initial Calibration
 Integrator: ChemStation

Volume Inj. : 1 µl
 Signal #1 Phase : ZB MR1 Signal #2 Phase: ZB MR2
 Signal #1 Info : 30Mx0.32mmx 0.5µm Signal #2 Info : 30M x 0.32mm x 0.25µm

	Compound	RT#1	RT#2	Resp#1	Resp#2	ng/ml	ng/ml
42)	L9 AR-1268-2	8.201	7.040	459712	675595	1.717	2.381 #
43)	L9 AR-1268-3	0.000	7.274	0	30118	N.D.	0.124 #
44)	L9 AR-1268-4	8.823	7.581	435535	200215	4.158	1.863 #
45)	L9 AR-1268-5	9.209	7.869	871698	559215	1.175	0.712 #

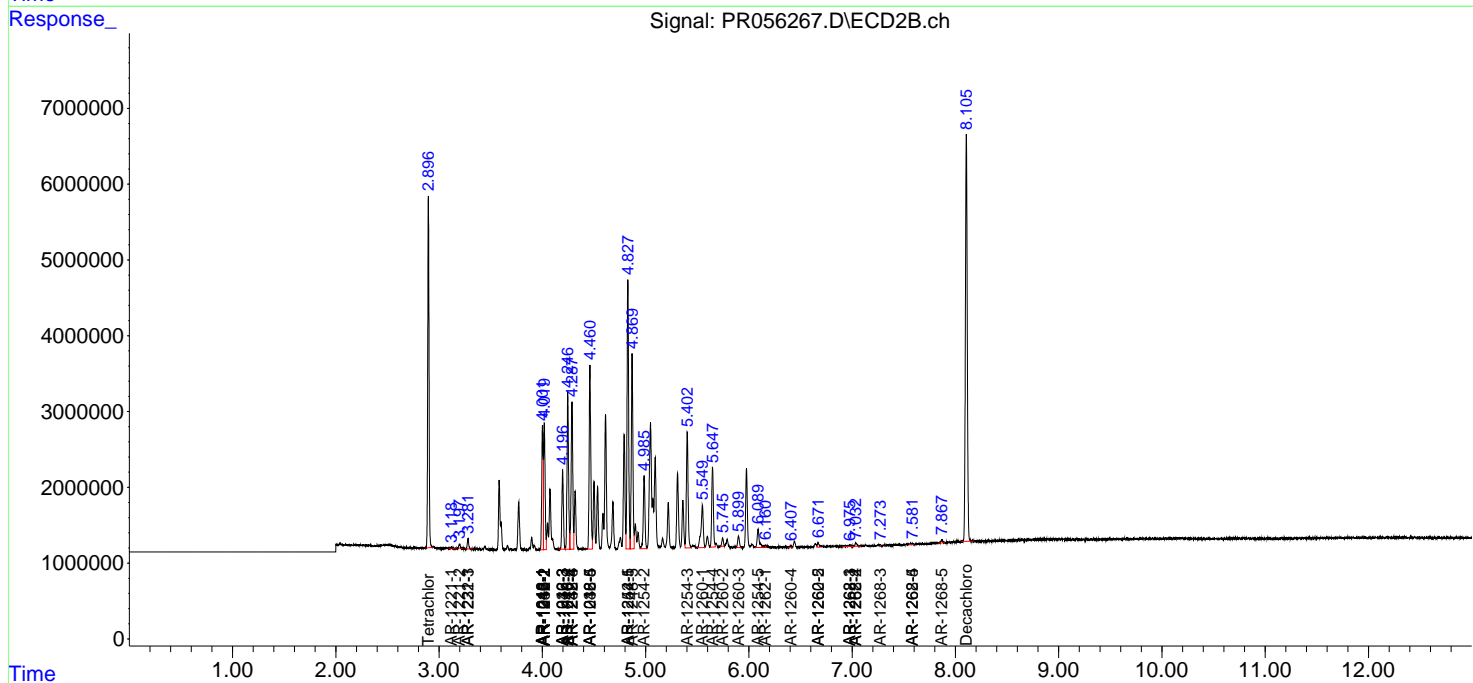
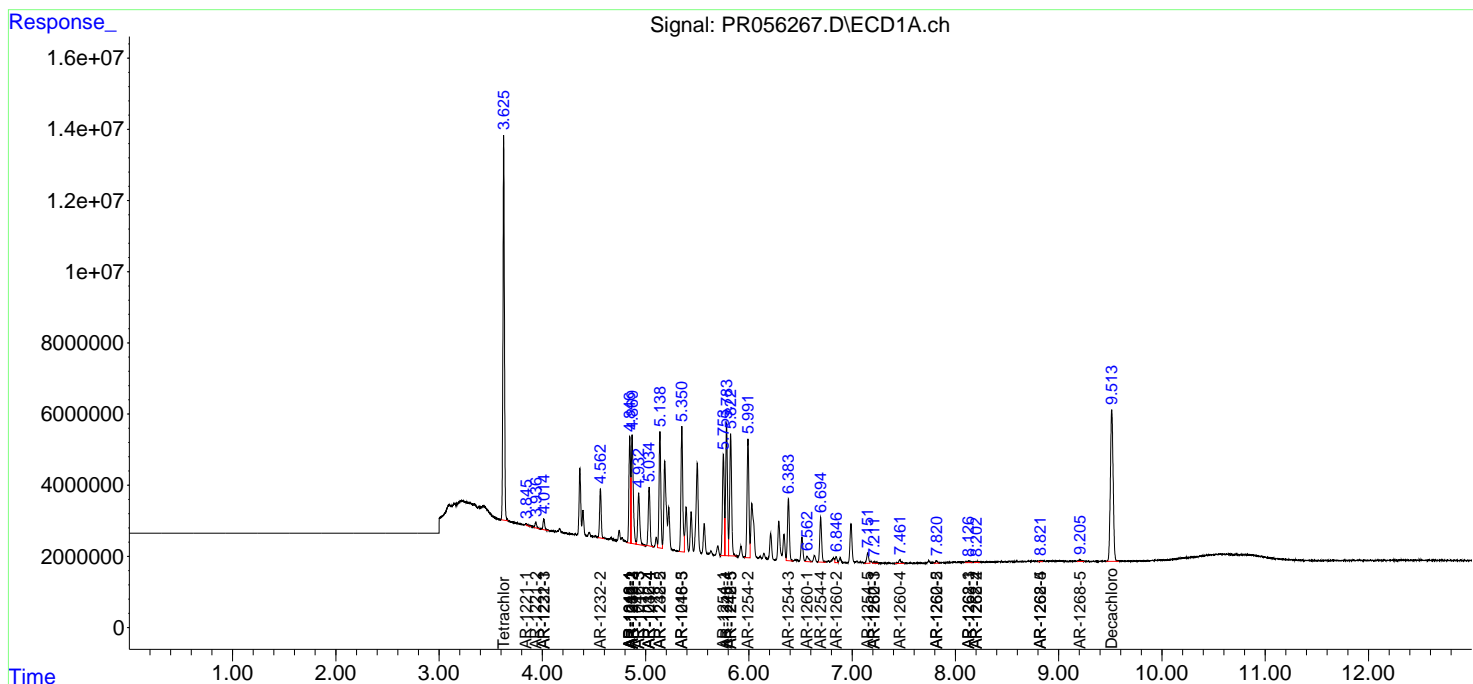
(f)=RT Delta > 1/2 Window (#)=Amounts differ by > 25% (m)=manual int.

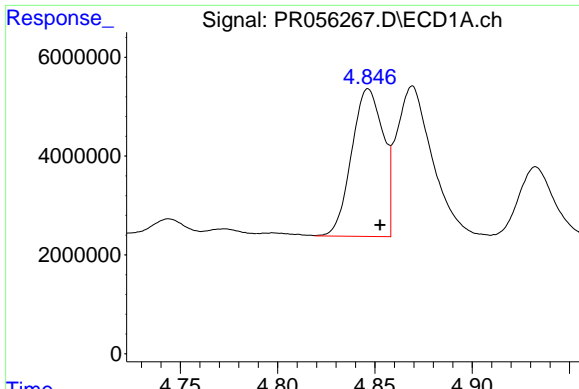
Data Path : Z:\pestpcbsrv\HPCHEM1\ECD_R\Data\PR090222\
 Data File : PR056267.D
 Signal(s) : Signal #1: ECD1A.ch Signal #2: ECD2B.ch
 Acq On : 02 Sep 2022 15:15
 Operator : AJ\MA
 Sample : AR1248CCC400
 Misc :
 ALS Vial : 5 Sample Multiplier: 1

Instrument :
 ECD_R
 ClientSampleId :

Integration File signal 1: autoint1.e
 Integration File signal 2: autoint2.e
 Quant Time: Sep 02 18:09:35 2022
 Quant Method : Z:\pestpcbsrv\HPCHEM1\ECD_R\Method\PR081022CLP.M
 Quant Title : GC EXTRACTABLES
 QLast Update : Wed Aug 10 07:34:29 2022
 Response via : Initial Calibration
 Integrator: ChemStation

Volume Inj. : 1 µl
 Signal #1 Phase : ZB MR1 Signal #2 Phase: ZB MR2
 Signal #1 Info : 30Mx0.32mmx 0.5µm Signal #2 Info : 30M x 0.32mm x 0.25µm

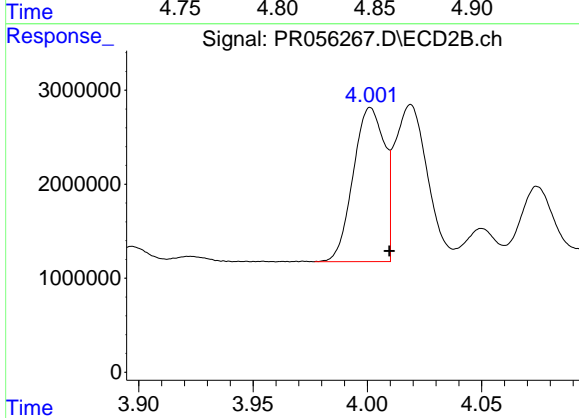




#3 AR-1016-1

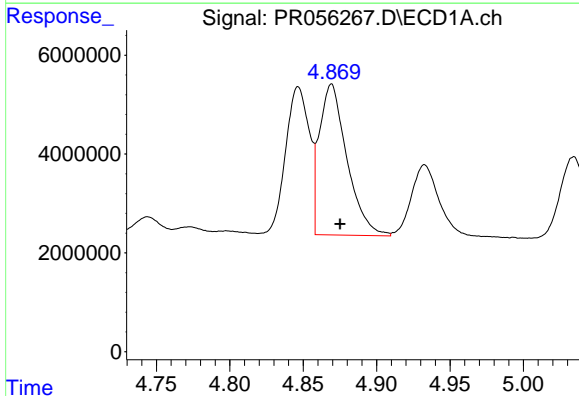
R.T.: 4.847 min
 Delta R.T.: -0.006 min
 Response: 33656316
 Conc: 271.63 ng/ml

Instrument :
 ECD_R
 ClientSampleId :



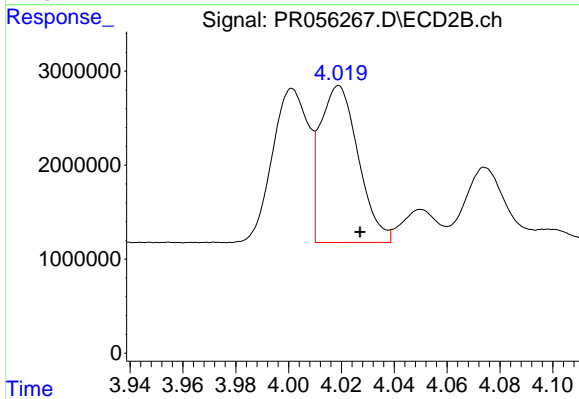
#3 AR-1016-1

R.T.: 4.001 min
 Delta R.T.: -0.008 min
 Response: 15522365
 Conc: 211.45 ng/ml



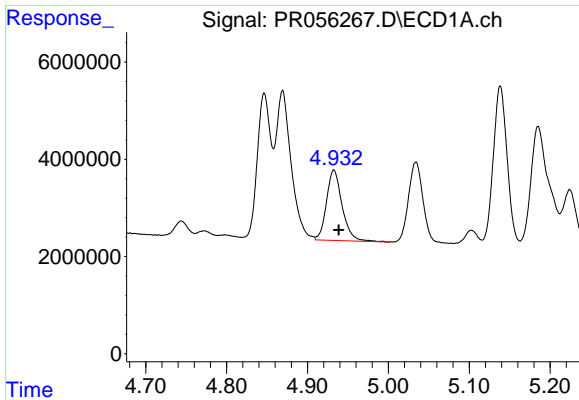
#4 AR-1016-2

R.T.: 4.869 min
 Delta R.T.: -0.006 min
 Response: 39847201
 Conc: 227.87 ng/ml



#4 AR-1016-2

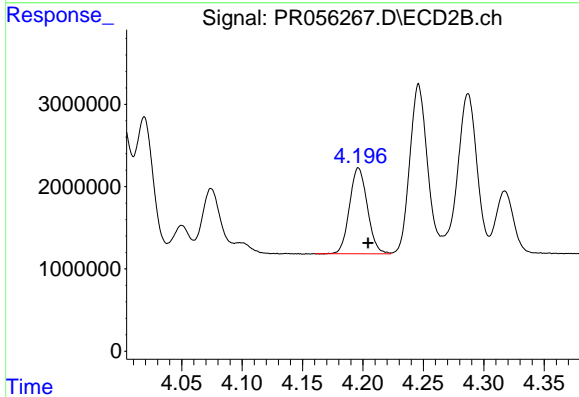
R.T.: 4.019 min
 Delta R.T.: -0.008 min
 Response: 16731518
 Conc: 164.28 ng/ml



#5 AR-1016-3

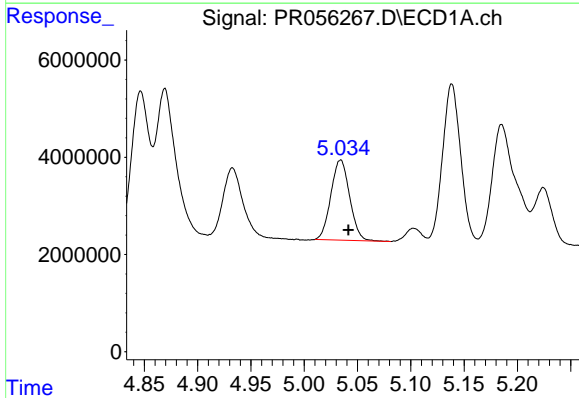
R.T.: 4.933 min
Delta R.T.: -0.006 min
Response: 19454107
Conc: 180.94 ng/ml

Instrument :
ECD_R
ClientSampleId :



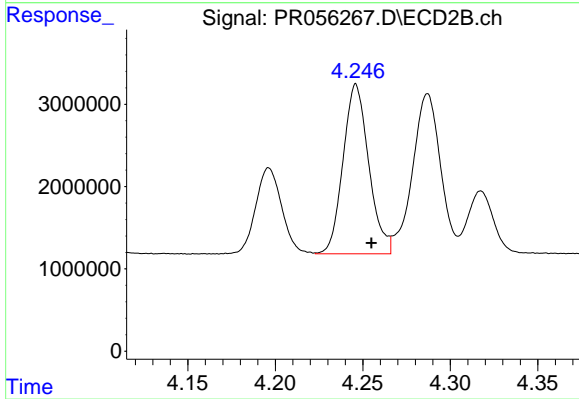
#5 AR-1016-3

R.T.: 4.196 min
Delta R.T.: -0.008 min
Response: 10720212
Conc: 194.63 ng/ml



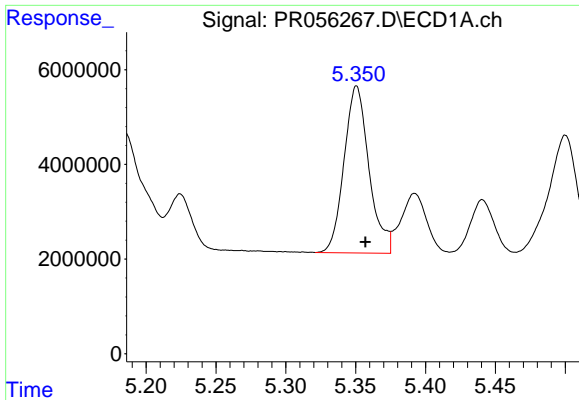
#6 AR-1016-4

R.T.: 5.034 min
Delta R.T.: -0.008 min
Response: 20219025
Conc: 235.42 ng/ml



#6 AR-1016-4

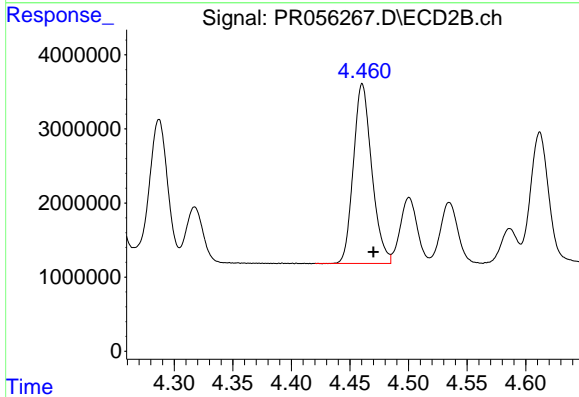
R.T.: 4.246 min
Delta R.T.: -0.009 min
Response: 21075649
Conc: 508.33 ng/ml



#7 AR-1016-5

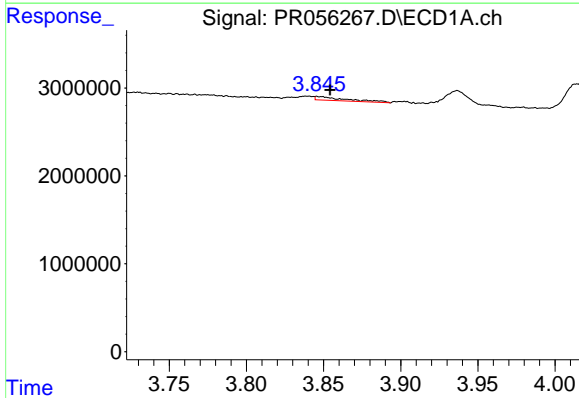
R.T.: 5.351 min
 Delta R.T.: -0.006 min
 Response: 43754871
 Conc: 558.34 ng/ml

Instrument :
 ECD_R
 ClientSampleId :



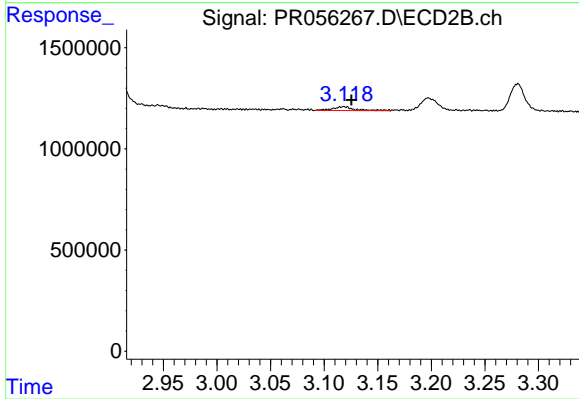
#7 AR-1016-5

R.T.: 4.461 min
 Delta R.T.: -0.010 min
 Response: 26483999
 Conc: 481.83 ng/ml



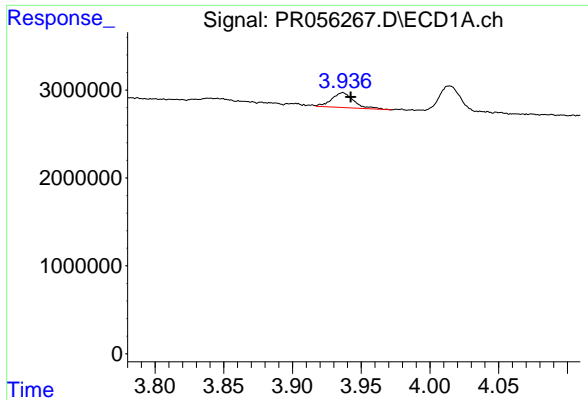
#8 AR-1221-1

R.T.: 3.845 min
 Delta R.T.: -0.009 min
 Response: 596599
 Conc: 11.37 ng/ml



#8 AR-1221-1

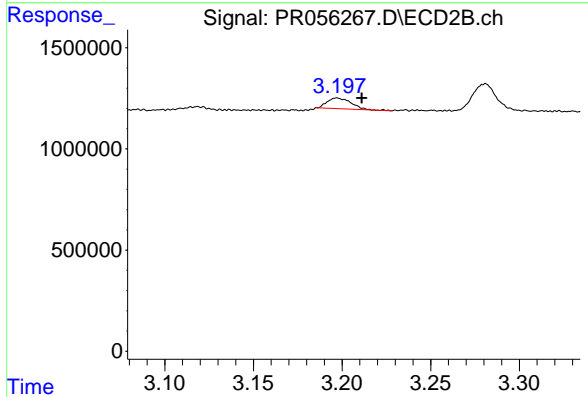
R.T.: 3.119 min
 Delta R.T.: -0.007 min
 Response: 281531
 Conc: 11.51 ng/ml



#9 AR-1221-2

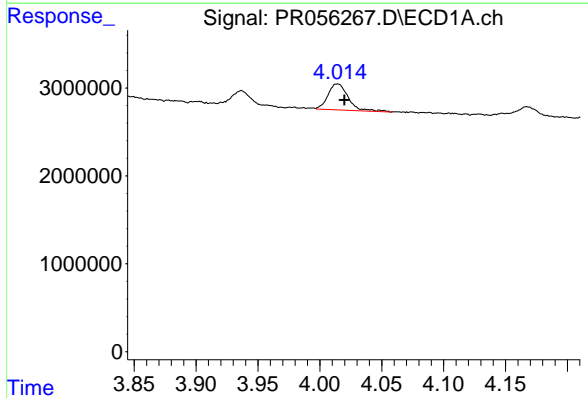
R.T.: 3.937 min
 Delta R.T.: -0.006 min
 Response: 1915716
 Conc: 52.99 ng/ml

Instrument :
 ECD_R
 ClientSampleId :



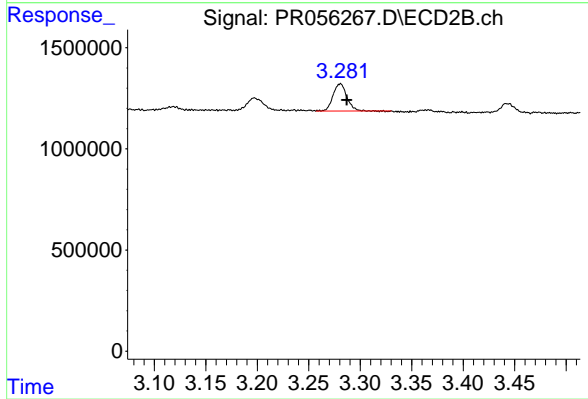
#9 AR-1221-2

R.T.: 3.197 min
 Delta R.T.: -0.014 min
 Response: 503034
 Conc: 29.60 ng/ml



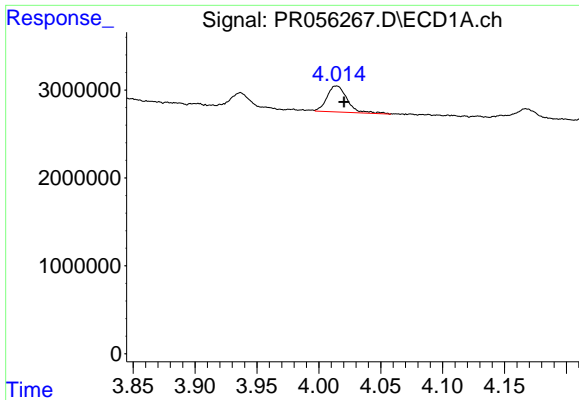
#10 AR-1221-3

R.T.: 4.014 min
 Delta R.T.: -0.005 min
 Response: 3382265
 Conc: 29.35 ng/ml



#10 AR-1221-3

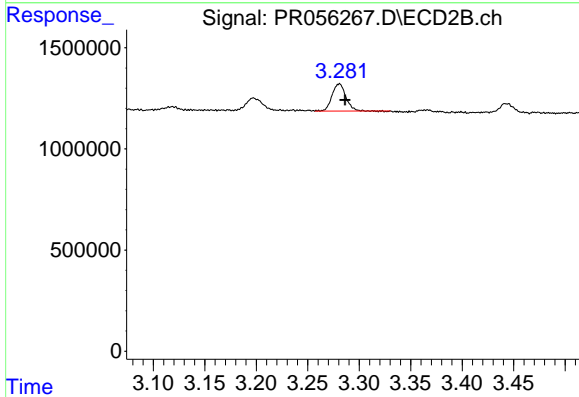
R.T.: 3.281 min
 Delta R.T.: -0.006 min
 Response: 1234144
 Conc: 21.39 ng/ml



#11 AR-1232-1

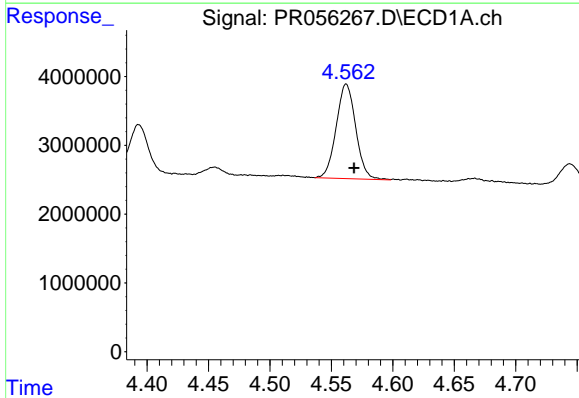
R.T.: 4.014 min
 Delta R.T.: -0.006 min
 Response: 3382265
 Conc: 33.83 ng/ml

Instrument :
 ECD_R
 ClientSampleId :



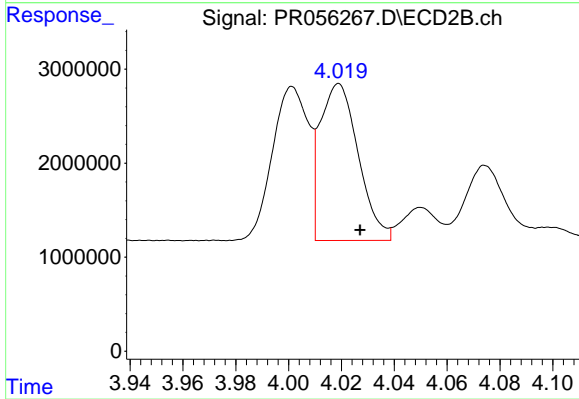
#11 AR-1232-1

R.T.: 3.281 min
 Delta R.T.: -0.006 min
 Response: 1234144
 Conc: 25.00 ng/ml



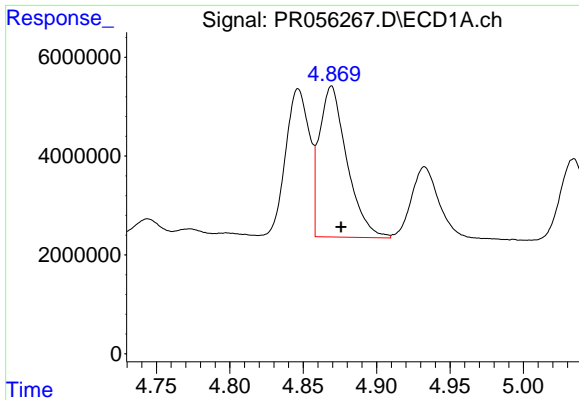
#12 AR-1232-2

R.T.: 4.562 min
 Delta R.T.: -0.006 min
 Response: 15203380
 Conc: 316.33 ng/ml



#12 AR-1232-2

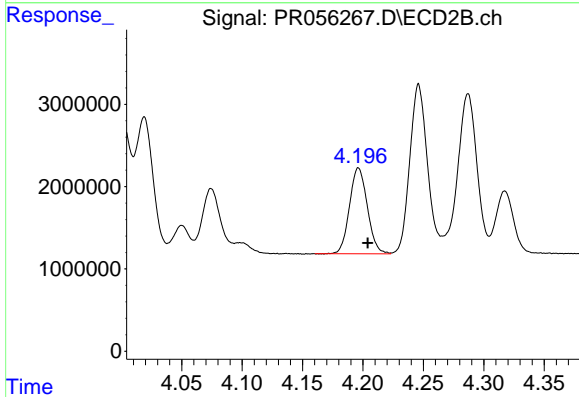
R.T.: 4.019 min
 Delta R.T.: -0.008 min
 Response: 16731518
 Conc: 360.77 ng/ml



#13 AR-1232-3

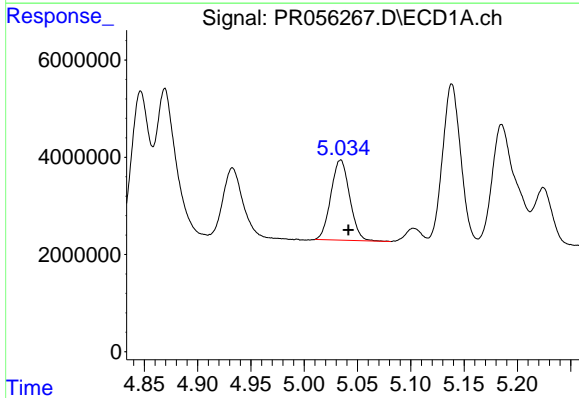
R.T.: 4.869 min
 Delta R.T.: -0.006 min
 Response: 39847201
 Conc: 482.84 ng/ml

Instrument :
 ECD_R
 ClientSampleId :



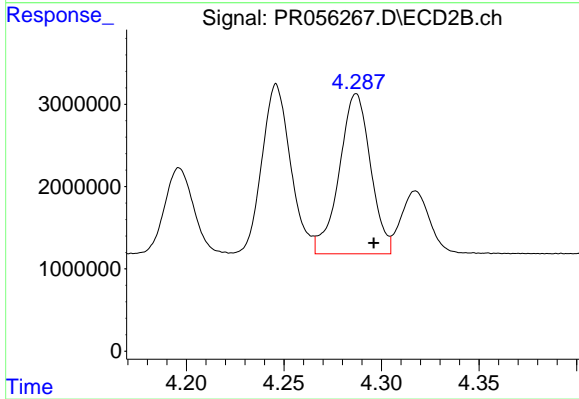
#13 AR-1232-3

R.T.: 4.196 min
 Delta R.T.: -0.008 min
 Response: 10720212
 Conc: 442.77 ng/ml



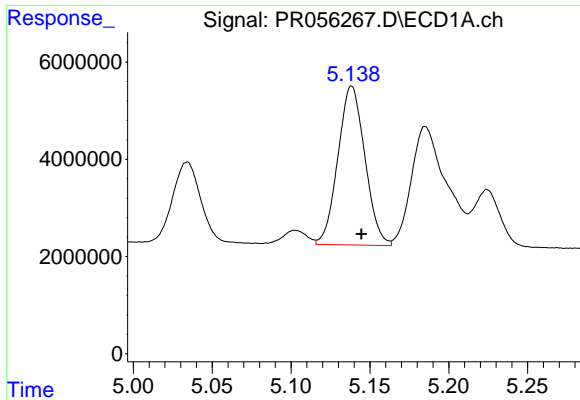
#14 AR-1232-4

R.T.: 5.034 min
 Delta R.T.: -0.007 min
 Response: 20219025
 Conc: 505.38 ng/ml



#14 AR-1232-4

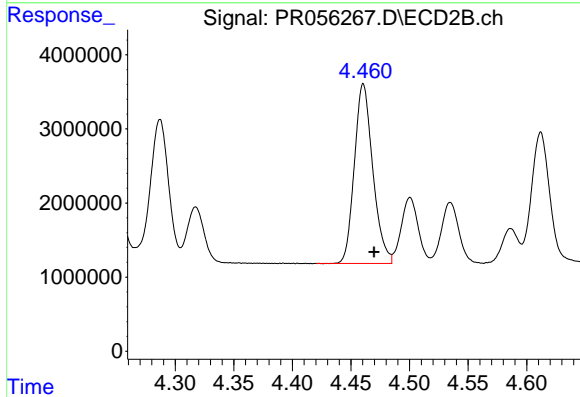
R.T.: 4.287 min
 Delta R.T.: -0.009 min
 Response: 21740603
 Conc: 1049.16 ng/ml



#15 AR-1232-5

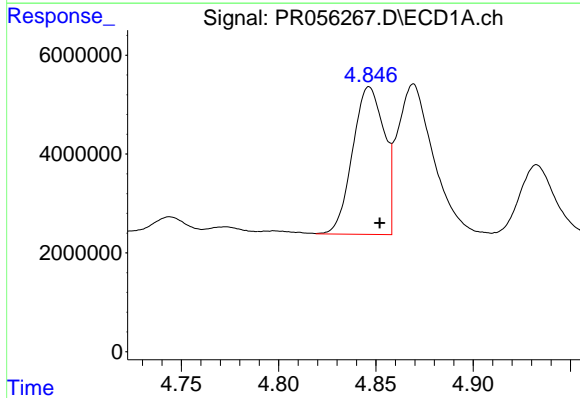
R.T.: 5.138 min
 Delta R.T.: -0.006 min
 Response: 38957609
 Conc: 1354.89 ng/ml

Instrument :
 ECD_R
 ClientSampleId :



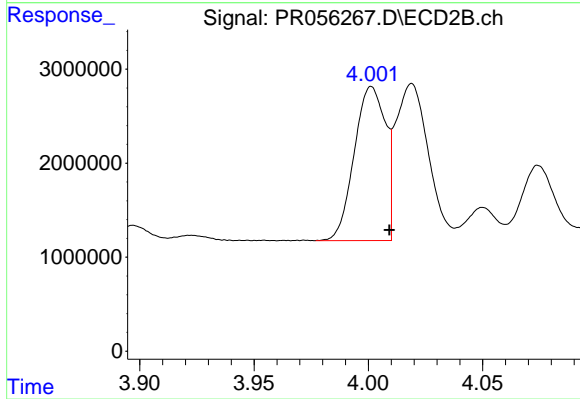
#15 AR-1232-5

R.T.: 4.461 min
 Delta R.T.: -0.009 min
 Response: 26483999
 Conc: 1148.88 ng/ml



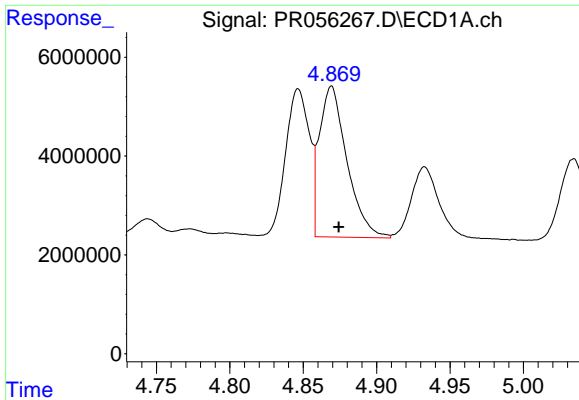
#16 AR-1242-1

R.T.: 4.847 min
 Delta R.T.: -0.005 min
 Response: 33656316
 Conc: 310.61 ng/ml



#16 AR-1242-1

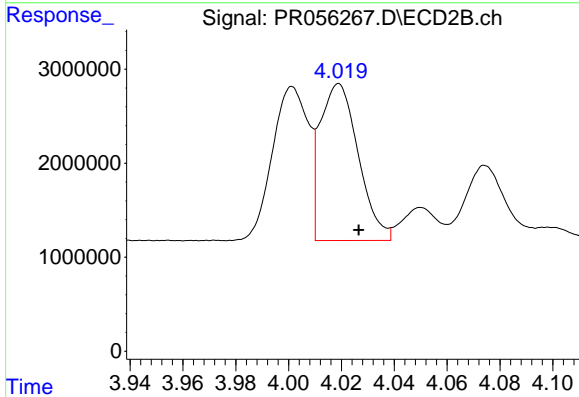
R.T.: 4.001 min
 Delta R.T.: -0.008 min
 Response: 15522365
 Conc: 256.73 ng/ml



#17 AR-1242-2

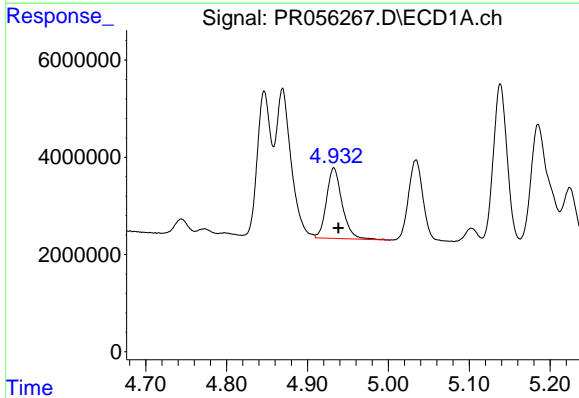
R.T.: 4.869 min
 Delta R.T.: -0.005 min
 Response: 39847201
 Conc: 263.24 ng/ml

Instrument :
 ECD_R
 ClientSampleId :



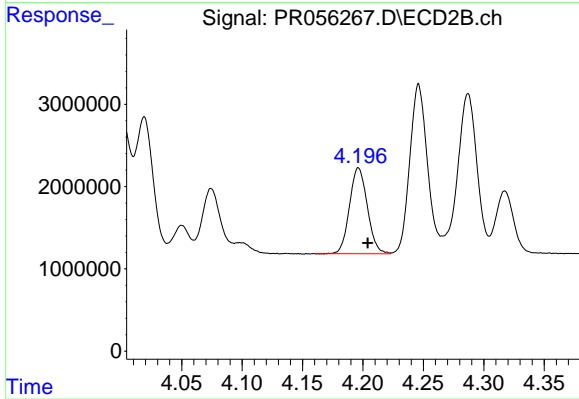
#17 AR-1242-2

R.T.: 4.019 min
 Delta R.T.: -0.008 min
 Response: 16731518
 Conc: 198.27 ng/ml



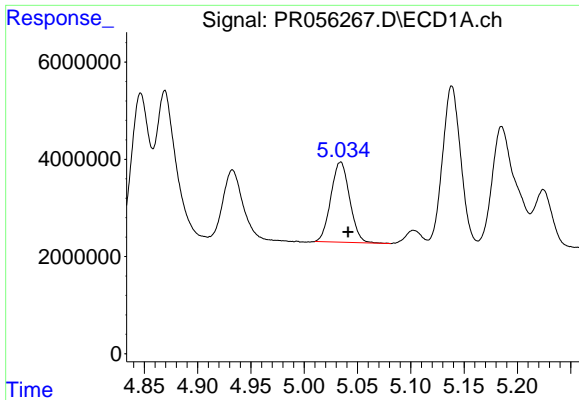
#18 AR-1242-3

R.T.: 4.933 min
 Delta R.T.: -0.005 min
 Response: 19454107
 Conc: 206.86 ng/ml



#18 AR-1242-3

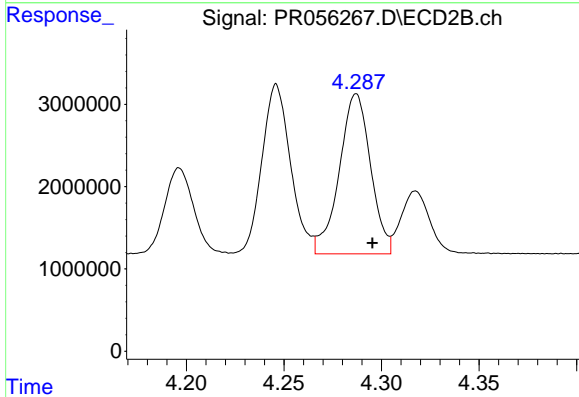
R.T.: 4.196 min
 Delta R.T.: -0.008 min
 Response: 10720212
 Conc: 236.38 ng/ml



#19 AR-1242-4

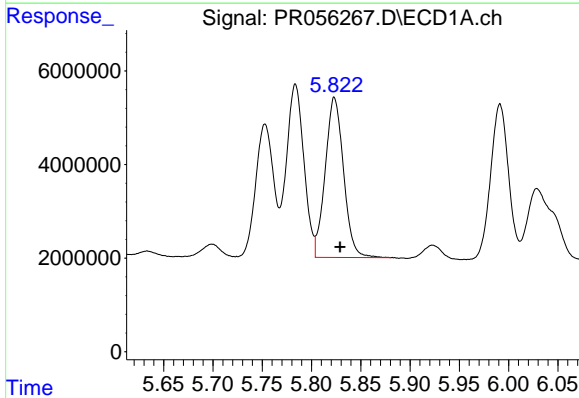
R.T.: 5.034 min
 Delta R.T.: -0.007 min
 Response: 20219025
 Conc: 271.54 ng/ml

Instrument :
 ECD_R
 ClientSampleId :



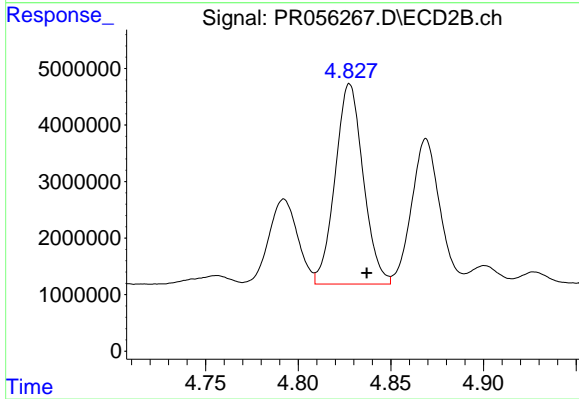
#19 AR-1242-4

R.T.: 4.287 min
 Delta R.T.: -0.008 min
 Response: 21740603
 Conc: 514.45 ng/ml



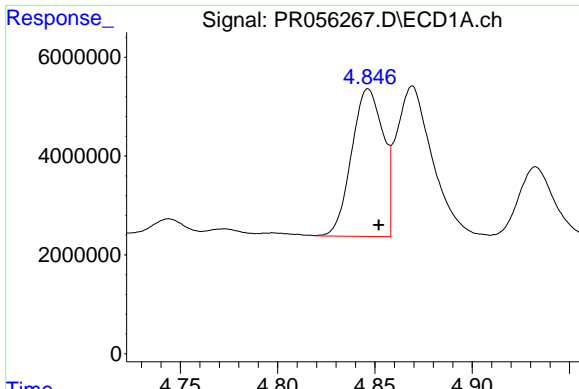
#20 AR-1242-5

R.T.: 5.823 min
 Delta R.T.: -0.006 min
 Response: 44273101
 Conc: 685.11 ng/ml



#20 AR-1242-5

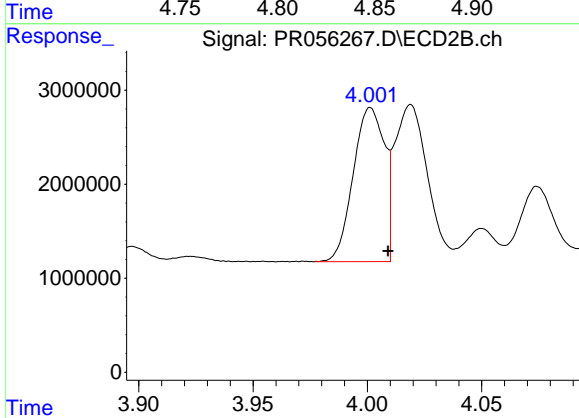
R.T.: 4.828 min
 Delta R.T.: -0.009 min
 Response: 37414328
 Conc: 684.78 ng/ml



#21 AR-1248-1

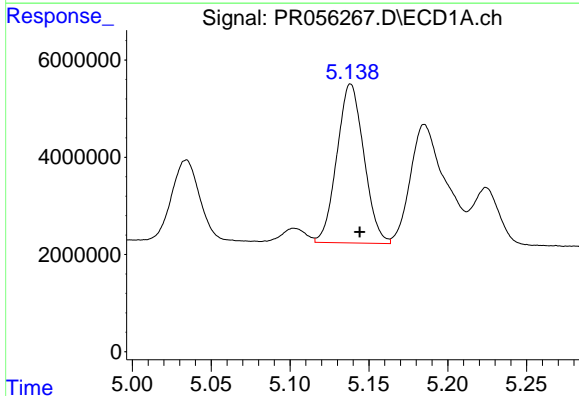
R.T.: 4.847 min
 Delta R.T.: -0.005 min
 Response: 33656316
 Conc: 417.31 ng/ml

Instrument :
 ECD_R
 ClientSampleId :



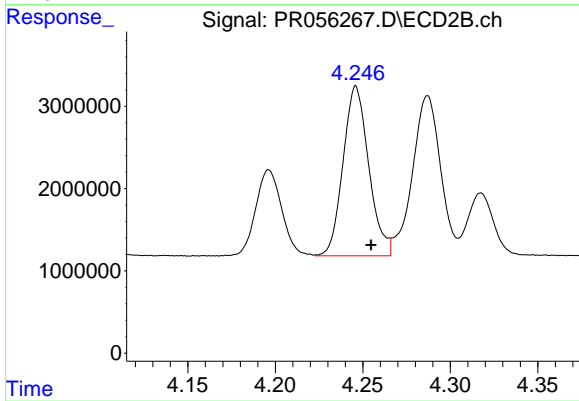
#21 AR-1248-1

R.T.: 4.001 min
 Delta R.T.: -0.008 min
 Response: 15522365
 Conc: 342.59 ng/ml



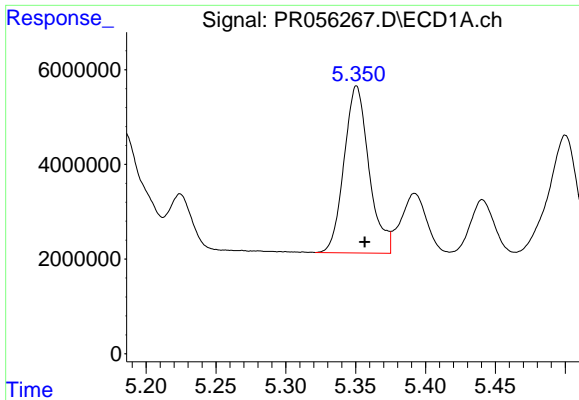
#22 AR-1248-2

R.T.: 5.138 min
 Delta R.T.: -0.006 min
 Response: 38957609
 Conc: 394.76 ng/ml



#22 AR-1248-2

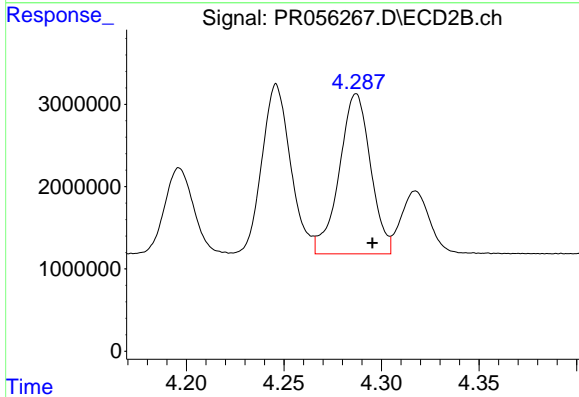
R.T.: 4.246 min
 Delta R.T.: -0.009 min
 Response: 21075649
 Conc: 347.21 ng/ml



#23 AR-1248-3

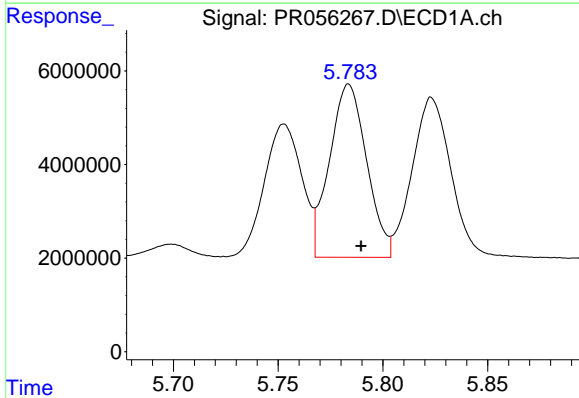
R.T.: 5.351 min
Delta R.T.: -0.006 min
Response: 43754871
Conc: 394.41 ng/ml

Instrument :
ECD_R
ClientSampleId :



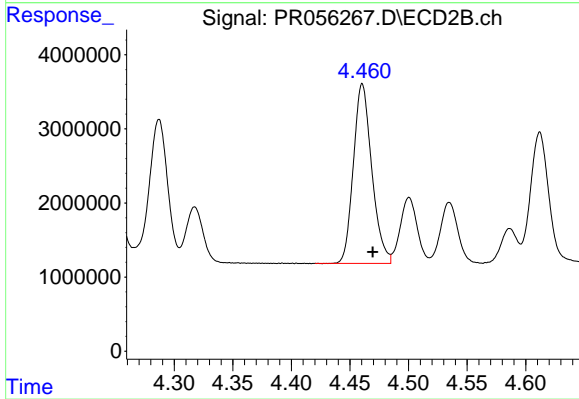
#23 AR-1248-3

R.T.: 4.287 min
Delta R.T.: -0.008 min
Response: 21740603
Conc: 349.81 ng/ml



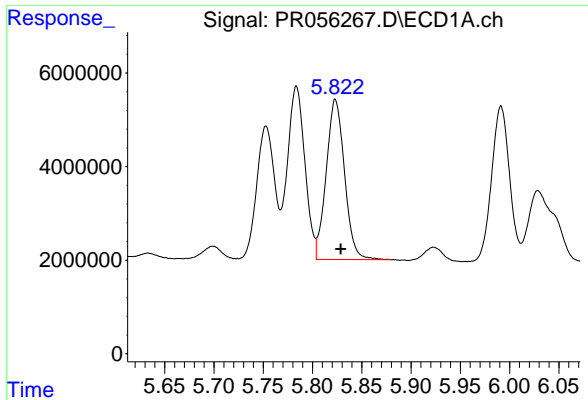
#24 AR-1248-4

R.T.: 5.784 min
Delta R.T.: -0.006 min
Response: 45635754
Conc: 417.46 ng/ml



#24 AR-1248-4

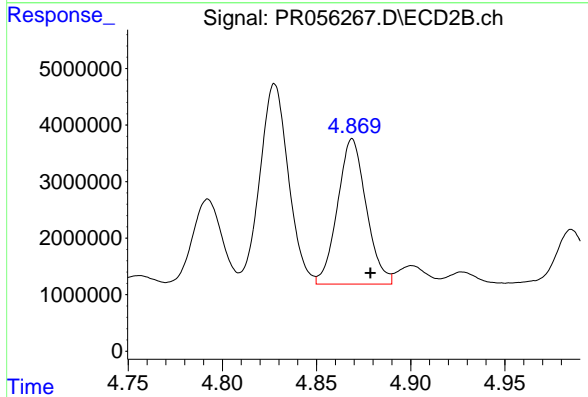
R.T.: 4.461 min
Delta R.T.: -0.009 min
Response: 26483999
Conc: 352.95 ng/ml



#25 AR-1248-5

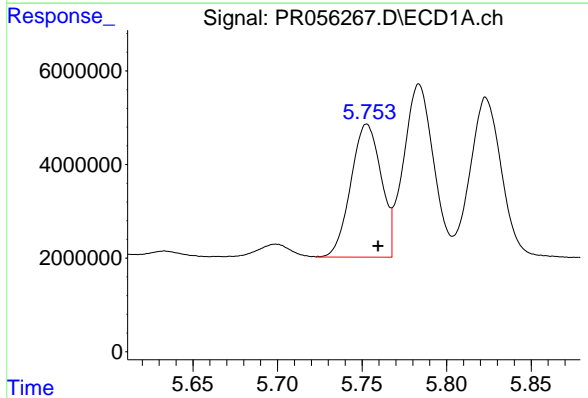
R.T.: 5.823 min
 Delta R.T.: -0.005 min
 Response: 44273101
 Conc: 413.59 ng/ml

Instrument :
 ECD_R
 ClientSampleId :



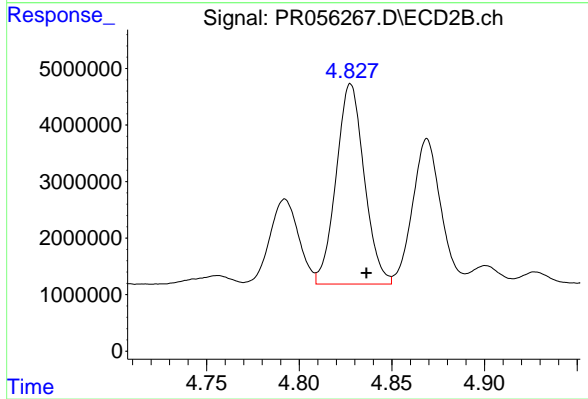
#25 AR-1248-5

R.T.: 4.869 min
 Delta R.T.: -0.010 min
 Response: 27244267
 Conc: 353.85 ng/ml



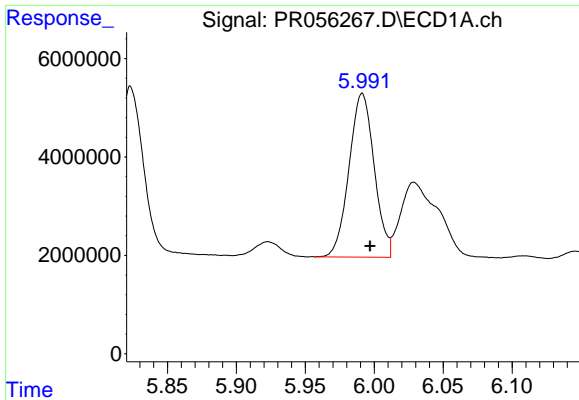
#26 AR-1254-1

R.T.: 5.753 min
 Delta R.T.: -0.007 min
 Response: 35472036
 Conc: 326.36 ng/ml



#26 AR-1254-1

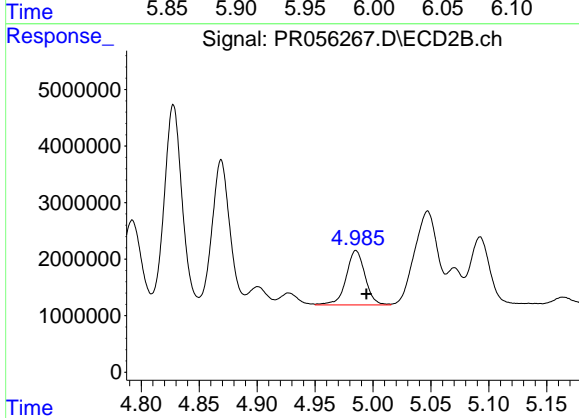
R.T.: 4.828 min
 Delta R.T.: -0.009 min
 Response: 37414328
 Conc: 331.63 ng/ml



#27 AR-1254-2

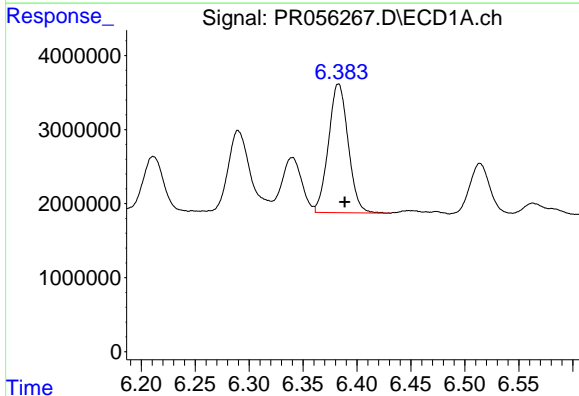
R.T.: 5.991 min
 Delta R.T.: -0.006 min
 Response: 42278832
 Conc: 266.14 ng/ml

Instrument :
 ECD_R
 ClientSampleId :



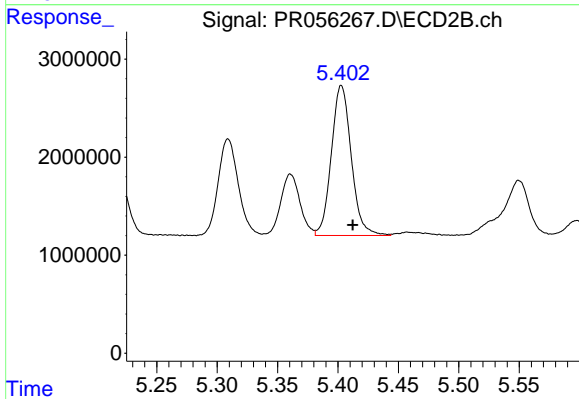
#27 AR-1254-2

R.T.: 4.985 min
 Delta R.T.: -0.009 min
 Response: 10912925
 Conc: 112.07 ng/ml



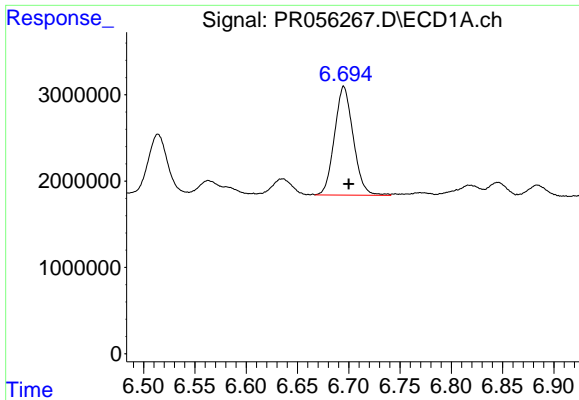
#28 AR-1254-3

R.T.: 6.383 min
 Delta R.T.: -0.006 min
 Response: 22155099
 Conc: 138.29 ng/ml



#28 AR-1254-3

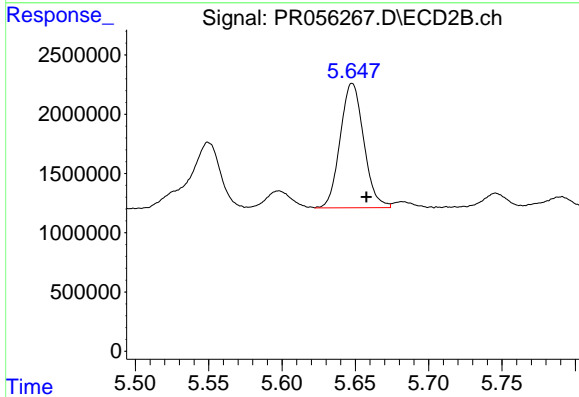
R.T.: 5.403 min
 Delta R.T.: -0.010 min
 Response: 17569782
 Conc: 110.68 ng/ml



#29 AR-1254-4

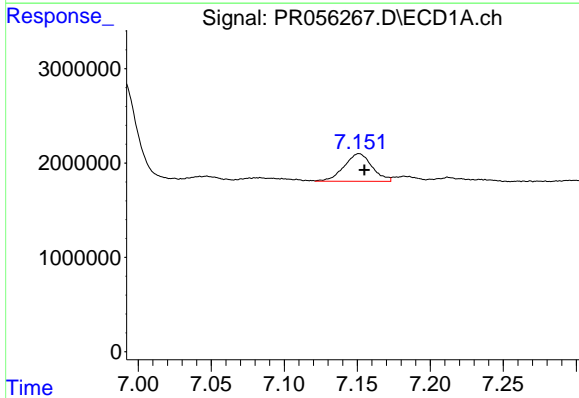
R.T.: 6.695 min
 Delta R.T.: -0.005 min
 Response: 16012316
 Conc: 136.44 ng/ml

Instrument :
 ECD_R
 ClientSampleId :



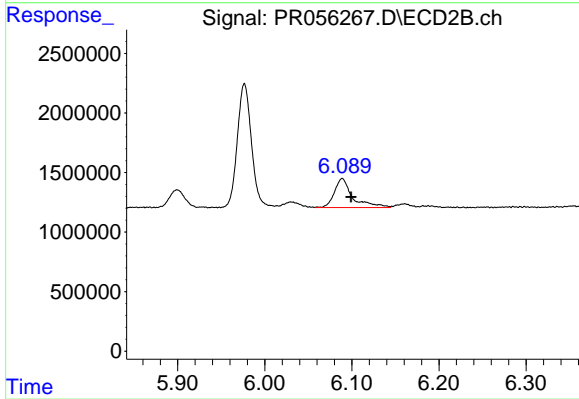
#29 AR-1254-4

R.T.: 5.648 min
 Delta R.T.: -0.010 min
 Response: 11738452
 Conc: 115.04 ng/ml



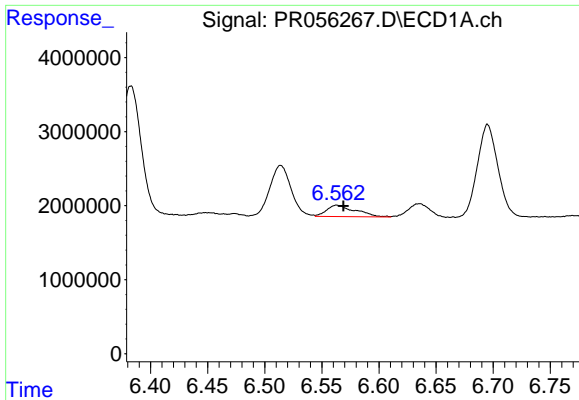
#30 AR-1254-5

R.T.: 7.151 min
 Delta R.T.: -0.004 min
 Response: 3889913
 Conc: 32.20 ng/ml



#30 AR-1254-5

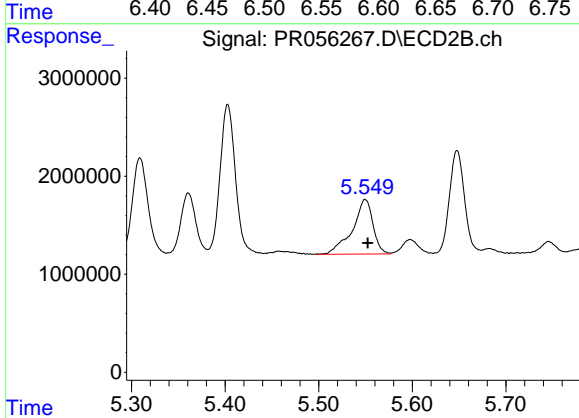
R.T.: 6.089 min
 Delta R.T.: -0.010 min
 Response: 3565166
 Conc: 24.78 ng/ml



#31 AR-1260-1

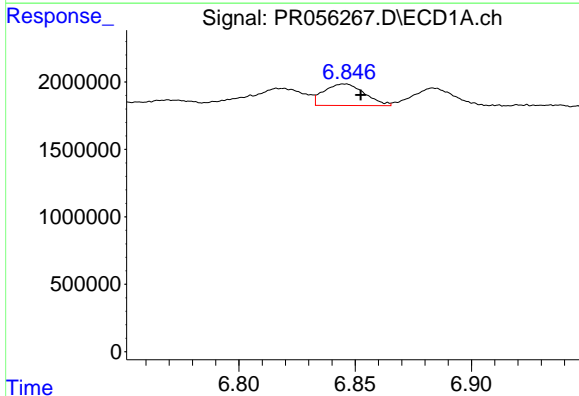
R.T.: 6.563 min
 Delta R.T.: -0.006 min
 Response: 2713273
 Conc: 23.91 ng/ml

Instrument :
 ECD_R
 ClientSampleId :



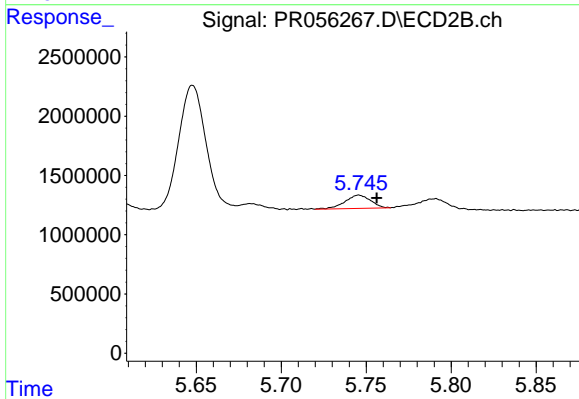
#31 AR-1260-1

R.T.: 5.550 min
 Delta R.T.: -0.003 min
 Response: 8519107
 Conc: 79.50 ng/ml



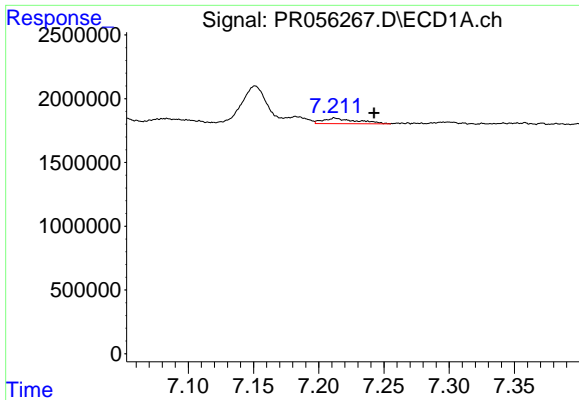
#32 AR-1260-2

R.T.: 6.845 min
 Delta R.T.: -0.007 min
 Response: 1942516
 Conc: 14.91 ng/ml



#32 AR-1260-2

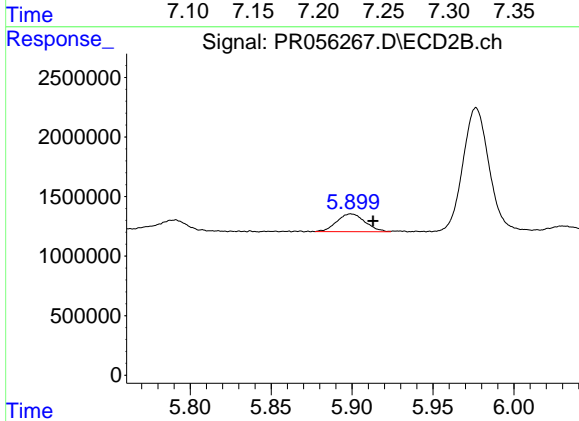
R.T.: 5.746 min
 Delta R.T.: -0.011 min
 Response: 1164017
 Conc: 9.00 ng/ml



#33 AR-1260-3

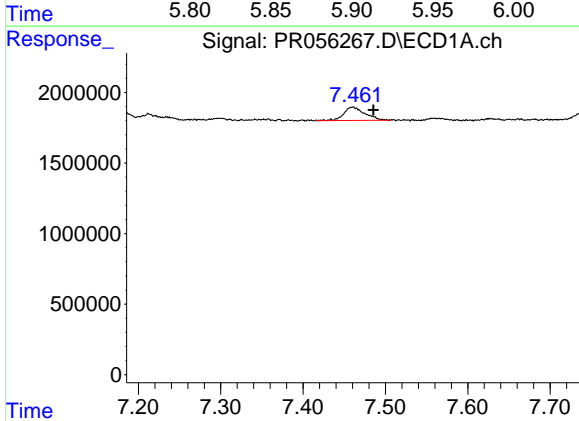
R.T.: 7.212 min
 Delta R.T.: -0.030 min
 Response: 763995
 Conc: 8.04 ng/ml

Instrument :
 ECD_R
 ClientSampleId :



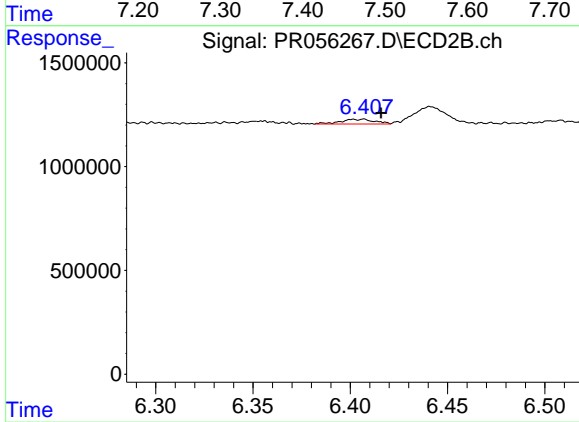
#33 AR-1260-3

R.T.: 5.899 min
 Delta R.T.: -0.014 min
 Response: 1805550
 Conc: 14.72 ng/ml



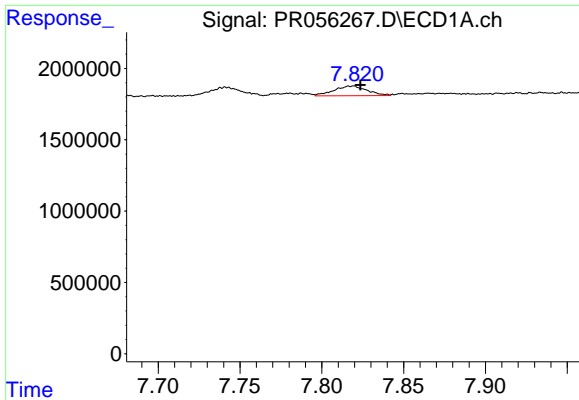
#34 AR-1260-4

R.T.: 7.460 min
 Delta R.T.: -0.025 min
 Response: 1686634
 Conc: 15.50 ng/ml



#34 AR-1260-4

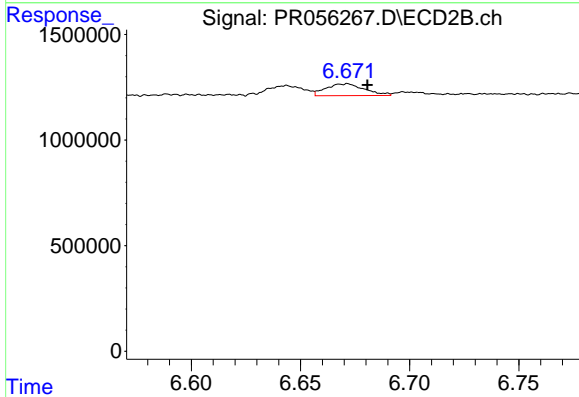
R.T.: 6.407 min
 Delta R.T.: -0.009 min
 Response: 285981
 Conc: 2.78 ng/ml



#35 AR-1260-5

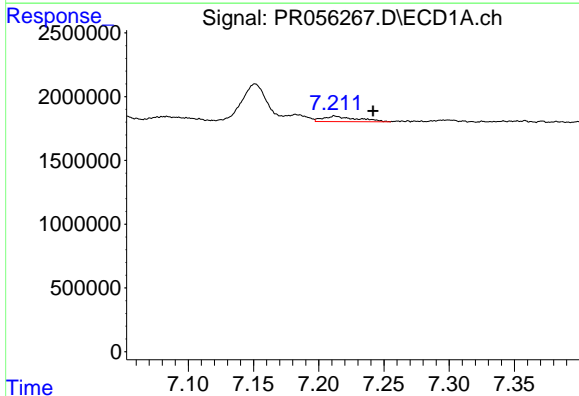
R.T.: 7.819 min
 Delta R.T.: -0.005 min
 Response: 967994
 Conc: 4.69 ng/ml

Instrument :
 ECD_R
 ClientSampleId :



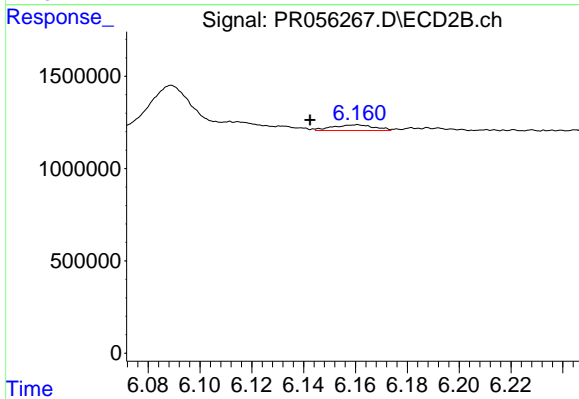
#35 AR-1260-5

R.T.: 6.671 min
 Delta R.T.: -0.009 min
 Response: 692143
 Conc: 2.88 ng/ml



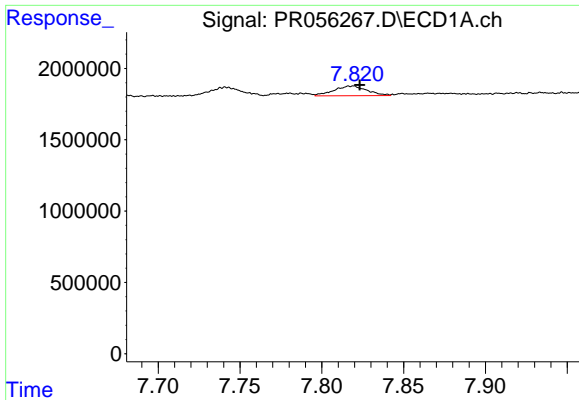
#36 AR-1262-1

R.T.: 7.212 min
 Delta R.T.: -0.029 min
 Response: 763995
 Conc: 5.36 ng/ml



#36 AR-1262-1

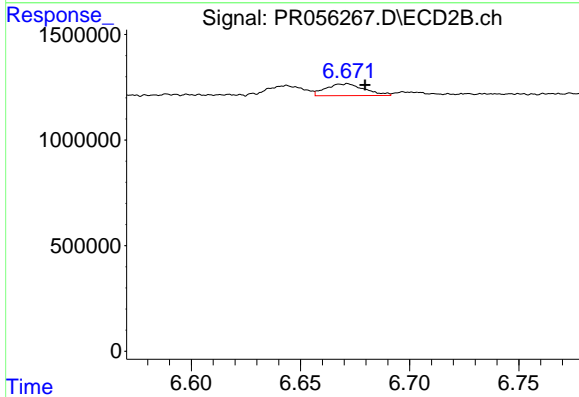
R.T.: 6.160 min
 Delta R.T.: 0.018 min
 Response: 343316
 Conc: 2.39 ng/ml



#37 AR-1262-2

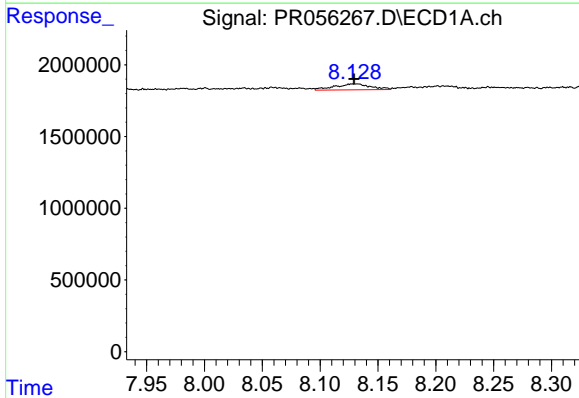
R.T.: 7.819 min
 Delta R.T.: -0.004 min
 Response: 967994
 Conc: 3.95 ng/ml

Instrument :
 ECD_R
 ClientSampleId :



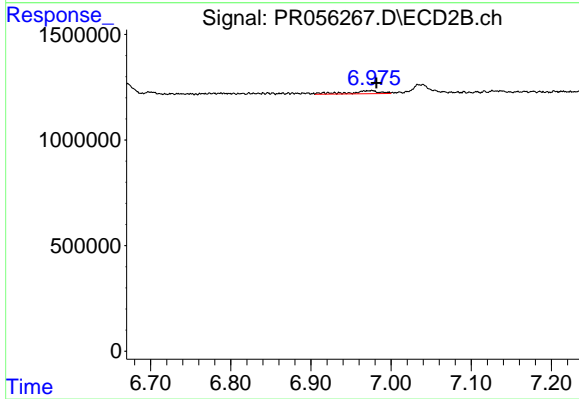
#37 AR-1262-2

R.T.: 6.671 min
 Delta R.T.: -0.008 min
 Response: 692143
 Conc: 2.62 ng/ml



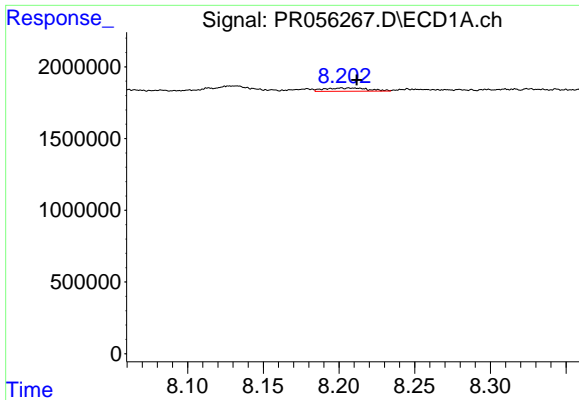
#38 AR-1262-3

R.T.: 8.132 min
 Delta R.T.: 0.002 min
 Response: 899366
 Conc: 5.31 ng/ml



#38 AR-1262-3

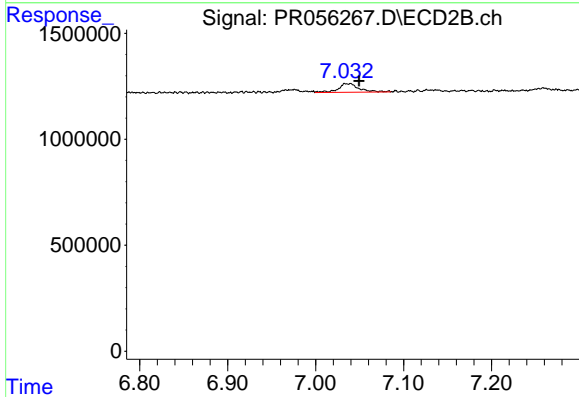
R.T.: 6.976 min
 Delta R.T.: -0.005 min
 Response: 378633
 Conc: 3.65 ng/ml



#39 AR-1262-4

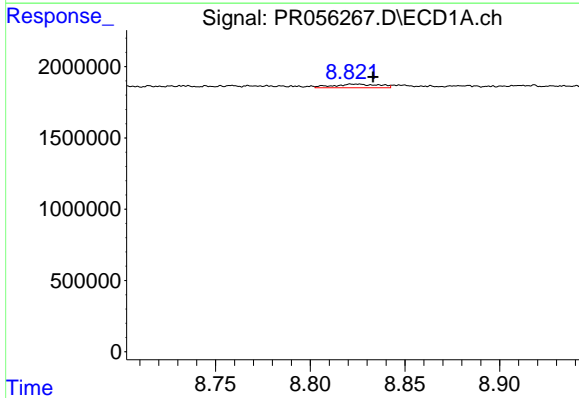
R.T.: 8.201 min
 Delta R.T.: -0.010 min
 Response: 459712
 Conc: 5.41 ng/ml

Instrument :
 ECD_R
 ClientSampleId :



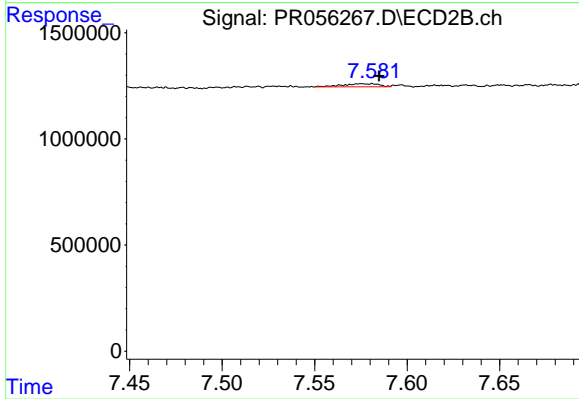
#39 AR-1262-4

R.T.: 7.040 min
 Delta R.T.: -0.010 min
 Response: 675595
 Conc: 3.44 ng/ml



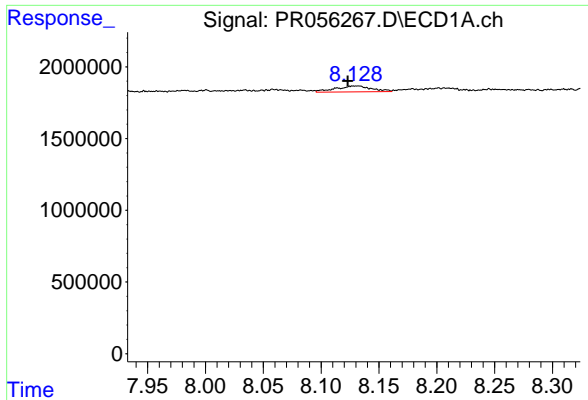
#40 AR-1262-5

R.T.: 8.823 min
 Delta R.T.: -0.010 min
 Response: 435535
 Conc: 4.72 ng/ml



#40 AR-1262-5

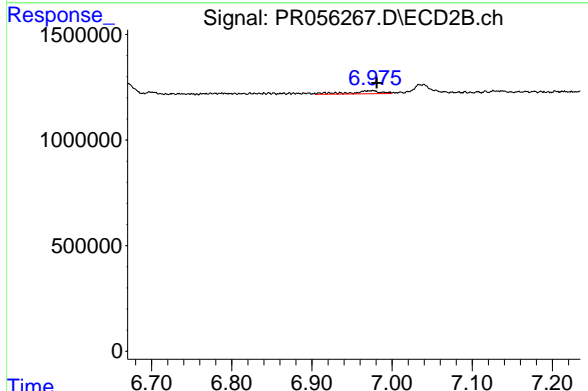
R.T.: 7.581 min
 Delta R.T.: -0.004 min
 Response: 200215
 Conc: 2.13 ng/ml



#41 AR-1268-1

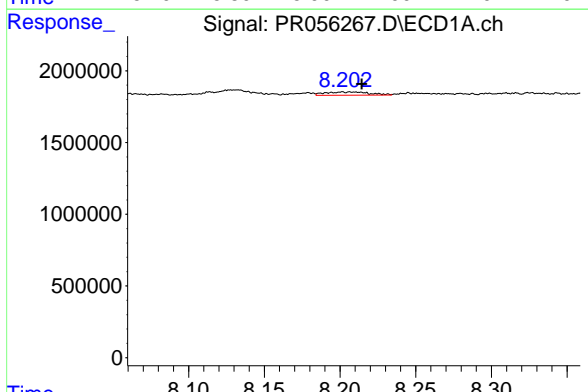
R.T.: 8.132 min
 Delta R.T.: 0.009 min
 Response: 899366
 Conc: 3.10 ng/ml

Instrument :
 ECD_R
 ClientSampleId :



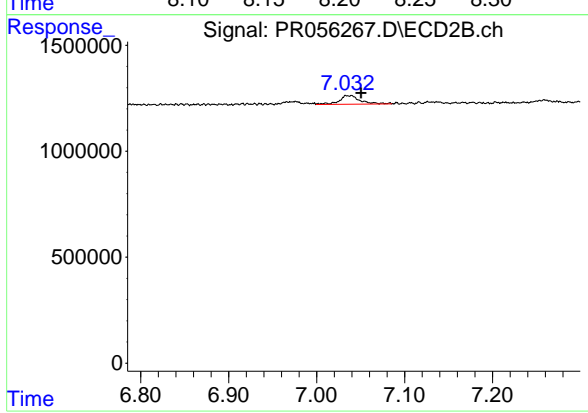
#41 AR-1268-1

R.T.: 6.976 min
 Delta R.T.: -0.005 min
 Response: 378633
 Conc: 1.21 ng/ml



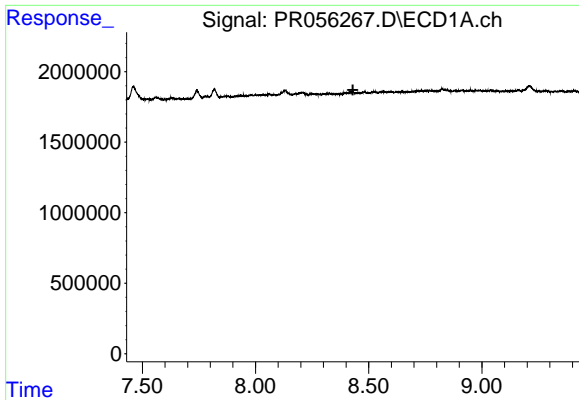
#42 AR-1268-2

R.T.: 8.201 min
 Delta R.T.: -0.013 min
 Response: 459712
 Conc: 1.72 ng/ml



#42 AR-1268-2

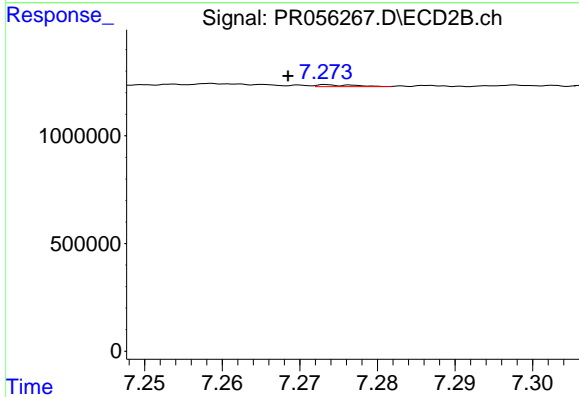
R.T.: 7.040 min
 Delta R.T.: -0.011 min
 Response: 675595
 Conc: 2.38 ng/ml



#43 AR-1268-3

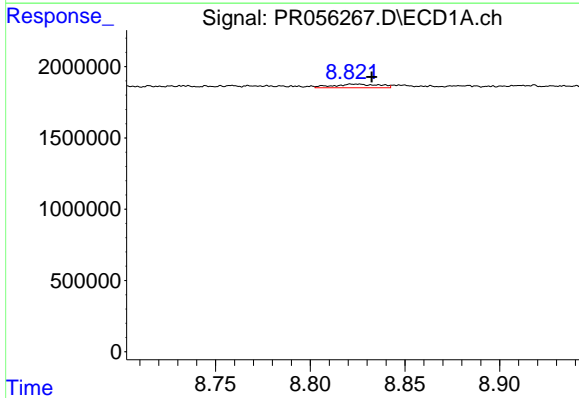
R.T.: 0.000 min
 Exp R.T.: 8.430 min
 Response: 0
 Conc: N.D.

Instrument :
 ECD_R
 ClientSampleId :



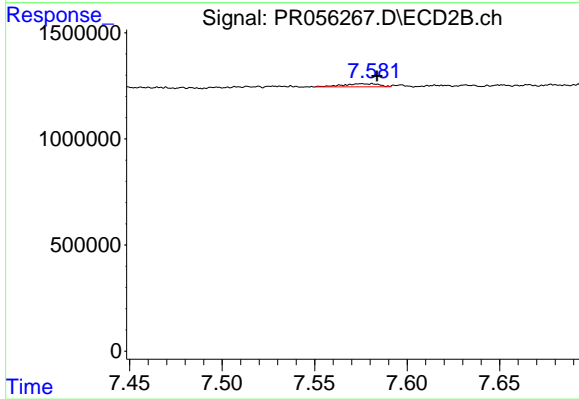
#43 AR-1268-3

R.T.: 7.274 min
 Delta R.T.: 0.005 min
 Response: 30118
 Conc: 0.12 ng/ml



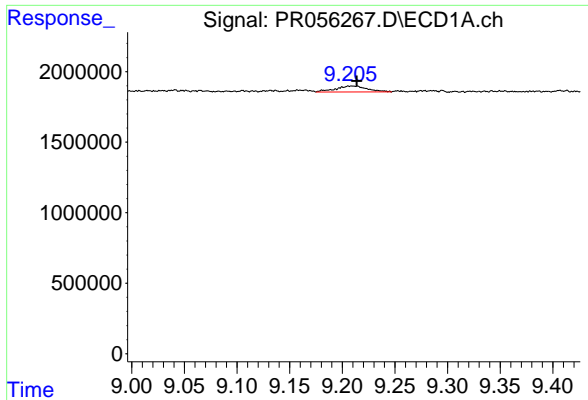
#44 AR-1268-4

R.T.: 8.823 min
 Delta R.T.: -0.009 min
 Response: 435535
 Conc: 4.16 ng/ml



#44 AR-1268-4

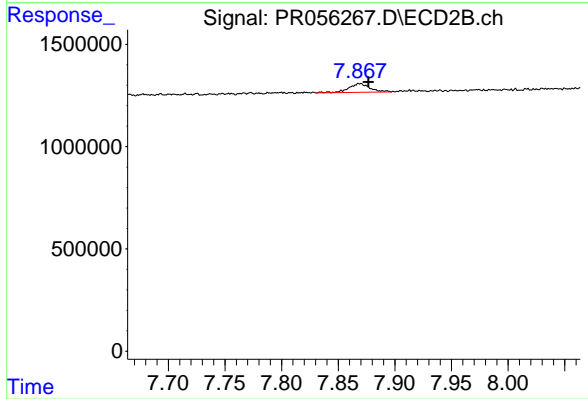
R.T.: 7.581 min
 Delta R.T.: -0.003 min
 Response: 200215
 Conc: 1.86 ng/ml



#45 AR-1268-5

R.T.: 9.209 min
Delta R.T.: -0.005 min
Response: 871698
Conc: 1.18 ng/ml

Instrument :
ECD_R
ClientSampleId :



#45 AR-1268-5

R.T.: 7.869 min
Delta R.T.: -0.008 min
Response: 559215
Conc: 0.71 ng/ml