

Data Path : Z:\pestpcbsrv\HPCHEM1\ECD_R\Data\PR090924\
 Data File : PR068514.D
 Signal(s) : Signal #1: ECD1A.ch Signal #2: ECD2B.ch
 Acq On : 09 Sep 2024 14:13
 Operator : AJ\MA
 Sample : P3843-10
 Misc :
 ALS Vial : 13 Sample Multiplier: 1

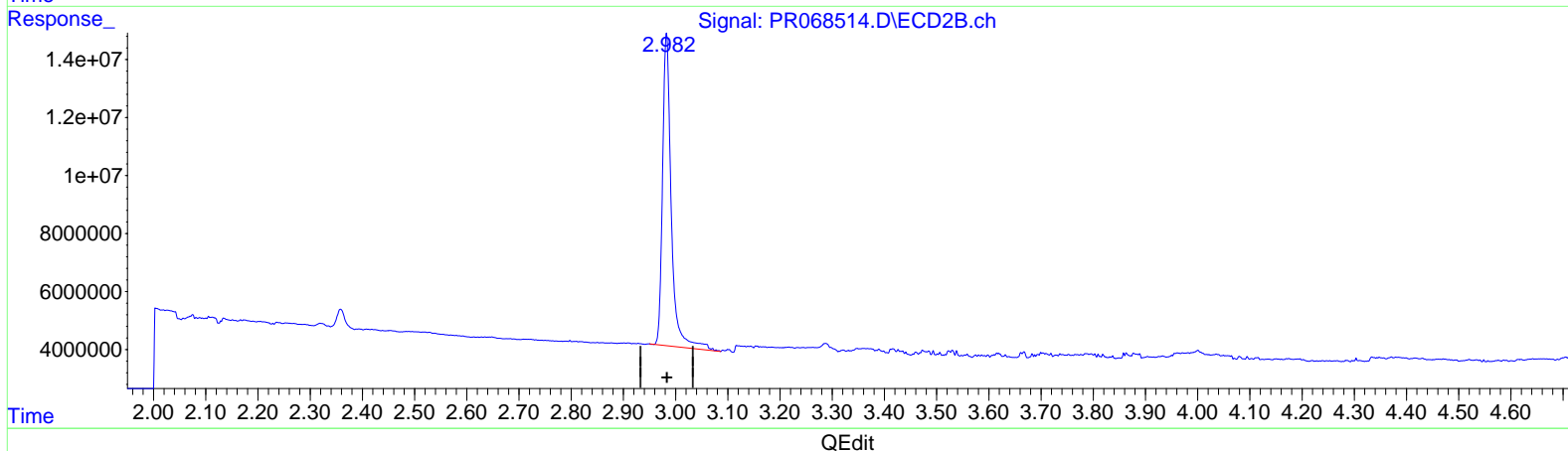
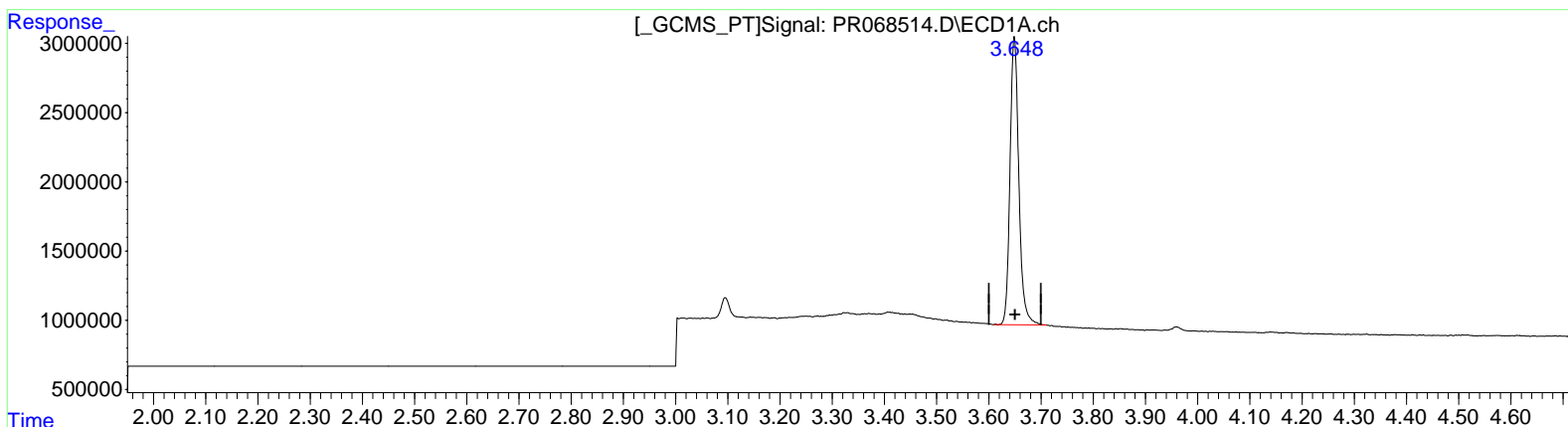
Instrument :
 ECD_R
 ClientSampleId :
 BHJL9

Manual Integrations APPROVED

Reviewed By :Yogesh Patel 09/10/2024
 Supervised By :Ankita Jodhani 09/10/2024

Integration File signal 1: autoint1.e
 Integration File signal 2: autoint2.e
 Quant Time: Sep 10 07:46:05 2024
 Quant Method : Z:\pestpcbsrv\HPCHEM1\ECD_R\Method\PR082724CLP.M
 Quant Title : GC EXTRACTABLES
 QLast Update : Wed Aug 28 06:10:14 2024
 Response via : Initial Calibration
 Integrator: ChemStation

Volume Inj. : 1 µl
 Signal #1 Phase : ZB MR1 Signal #2 Phase: ZB MR2
 Signal #1 Info : 30Mx0.32mmx 0.5µm Signal #2 Info : 30M x 0.32mm x 0.25µm



(1) Tetrachloro-m-xylene (SA)

3.649min 24.523 ng/ml

response 24486318

(1) Tetrachloro-m-xylene #2 (SA)

2.983min 23.407 ng/ml

response 125417328

Data Path : Z:\pestpcbsrv\HPCHEM1\ECD_R\Data\PR090924\
Data File : PR068514.D
Signal(s) : Signal #1: ECD1A.ch Signal #2: ECD2B.ch
Acq On : 09 Sep 2024 14:13
Operator : AJ\MA
Sample : P3843-10
Misc :
ALS Vial : 13 Sample Multiplier: 1

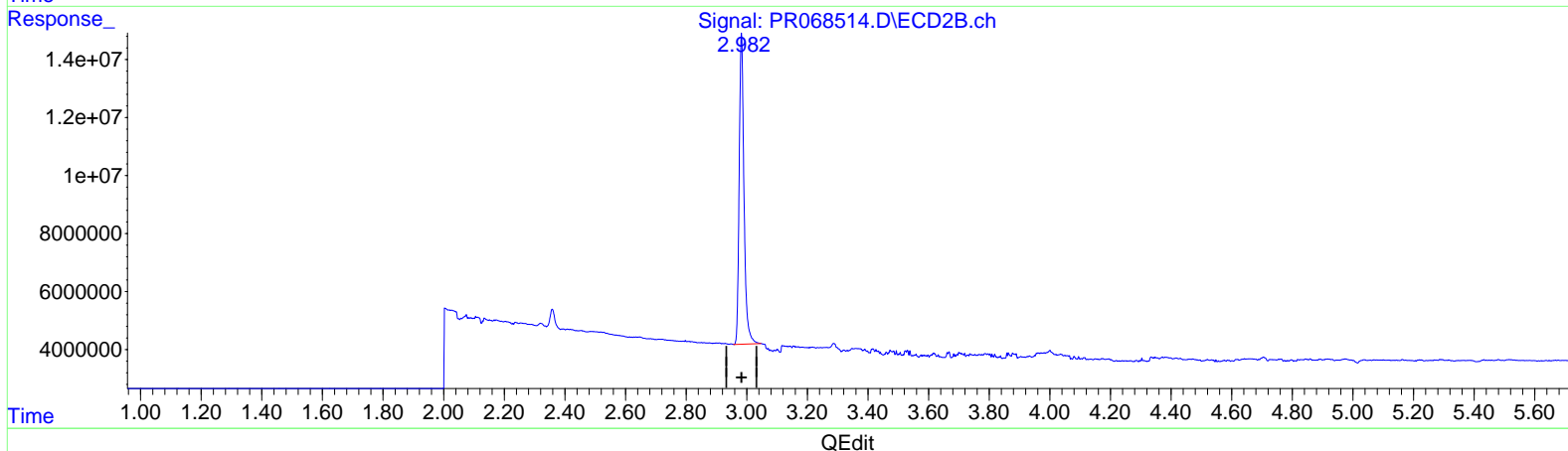
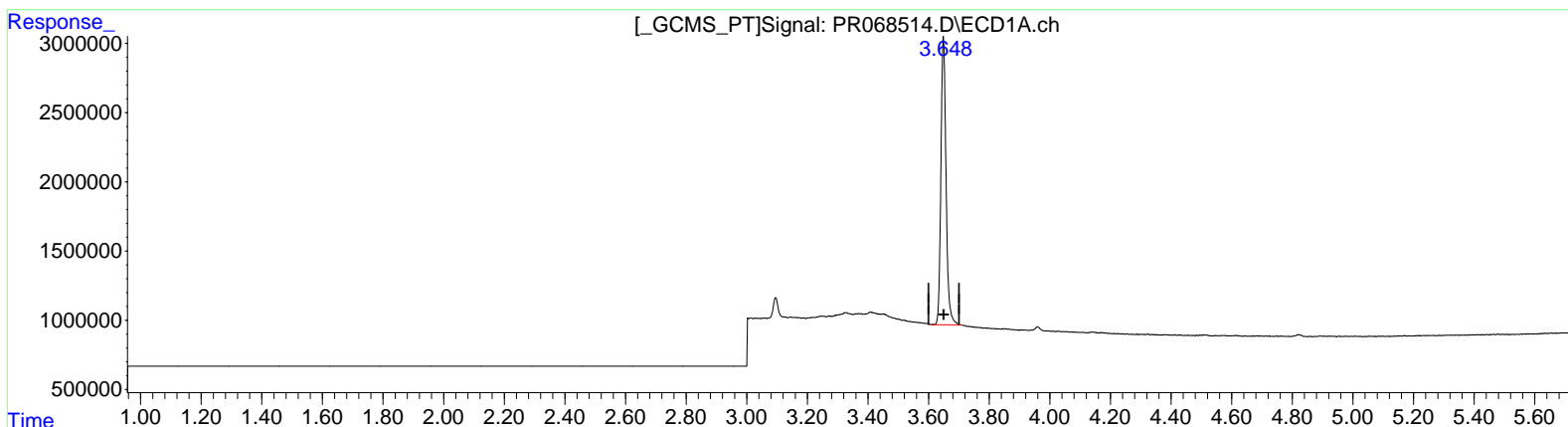
Instrument :
ECD_R
ClientSampleId :
BHJL9

Manual Integrations APPROVED

Reviewed By :Yogesh Patel 09/10/2024
Supervised By :Ankita Jodhani 09/10/2024

Integration File signal 1: autoint1.e
Integration File signal 2: autoint2.e
Quant Time: Sep 10 07:46:05 2024
Quant Method : Z:\pestpcbsrv\HPCHEM1\ECD_R\Method\PR082724CLP.M
Quant Title : GC EXTRACTABLES
QLast Update : Wed Aug 28 06:10:14 2024
Response via : Initial Calibration
Integrator: ChemStation

Volume Inj. : 1 µl
Signal #1 Phase : ZB MR1 Signal #2 Phase: ZB MR2
Signal #1 Info : 30Mx0.32mmx 0.5µm Signal #2 Info : 30M x 0.32mm x 0.25µm



(1) Tetrachloro-m-xylene (SA)
3.649min 24.523 ng/ml
response 24486318

(1) Tetrachloro-m-xylene #2 (SA)
2.982min 21.986 ng/ml m
response 117803498