

Data Path : Z:\pestpcbsrv\HPCHEM1\ECD\_R\Data\PR091219\  
 Data File : PR041047.D  
 Signal(s) : Signal #1: ECD1A.ch Signal #2: ECD2B.ch  
 Acq On : 12 Sep 2019 15:13  
 Operator : SM\AJ  
 Sample : K4779-20  
 Misc :  
 ALS Vial : 32 Sample Multiplier: 1

**Instrument :**  
 ECD\_R  
**ClientSampled :**  
 C0AK0

**Manual Integrations**  
**APPROVED**  
 Ankita  
 9/13/2019 3:55:16 PM

Integration File signal 1: autoint1.e  
 Integration File signal 2: autoint2.e  
 Quant Time: Sep 13 02:48:02 2019  
 Quant Method : Z:\pestpcbsrv\HPCHEM1\ECD\_R\Method\PR091019CLP.M  
 Quant Title : GC EXTRACTABLES  
 QLast Update : Tue Sep 10 13:01:53 2019  
 Response via : Initial Calibration  
 Integrator: ChemStation

Volume Inj. : 1 µl  
 Signal #1 Phase : ZB MR1 Signal #2 Phase: ZB MR2  
 Signal #1 Info : 30Mx0.32mmx 0.5µm Signal #2 Info : 30M x 0.32mm x 0.25µm

Compound	RT#1	RT#2	Resp#1	Resp#2	ng/ml	ng/ml
-----						
System Monitoring Compounds						
1) SA Tetrachlo...	4.724	3.992	47803488	197.8E6	15.555	14.855
2) SA Decachlor...	10.643	9.117	38755189	123.5E6	13.925	12.639
Target Compounds						
16) L4 AR-1242-1	5.900	5.092	1301111	2907798	17.511	16.737m
17) L4 AR-1242-2	5.923	5.114	1846980	3662673	17.623	15.304
18) L4 AR-1242-3	5.984	5.291	701526	2245767	11.084m	16.541m#
19) L4 AR-1242-4	6.086	5.379	761099	1339665	14.403m	9.742m#
20) L4 AR-1242-5	6.824	5.904	887939	4733673	14.092m	20.640 #
31) L7 AR-1260-1	7.509	6.590	1967176	13458891	12.743m	26.419m#
32) L7 AR-1260-2	7.762	6.774	3549294	7311432	19.293	11.501m#
33) L7 AR-1260-3	8.121	6.930	1652807	8142513	11.905m	14.118m
34) L7 AR-1260-4	8.355	7.407	2504488	3695964	15.403	7.486 #
35) L7 AR-1260-5	8.700	7.645	2309917	6855529	6.758	5.269m
-----						

(f)=RT Delta > 1/2 Window (#)=Amounts differ by > 25% (m)=manual int.

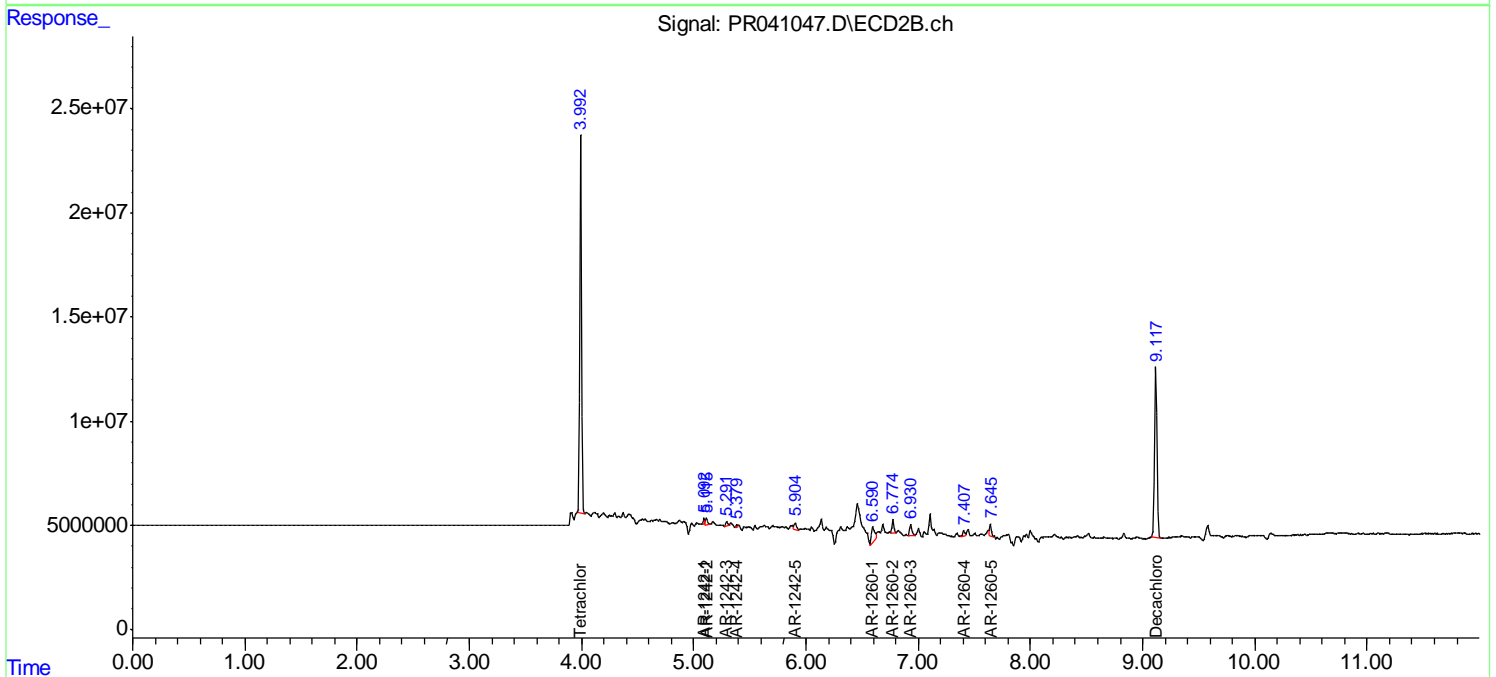
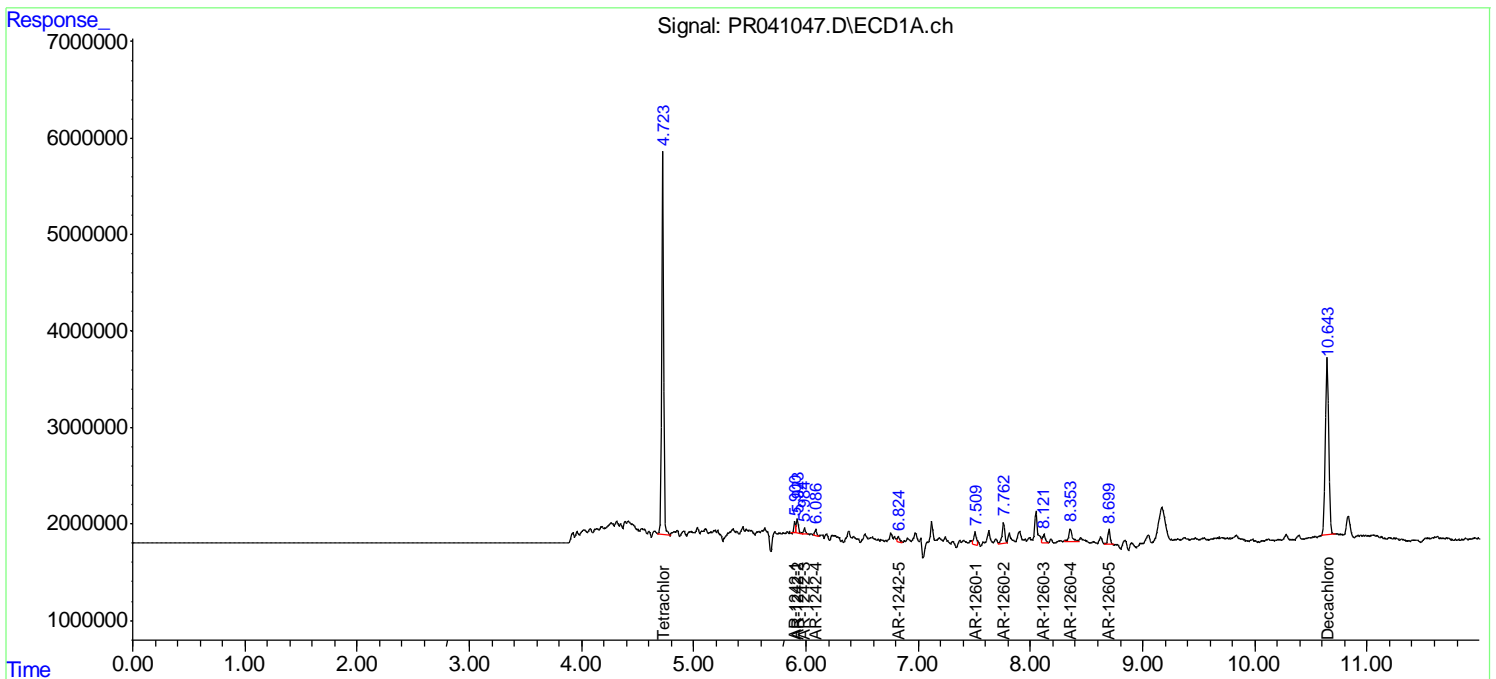
Data Path : Z:\pestpcbsrv\HPCHEM1\ECD\_R\Data\PR091219\  
 Data File : PR041047.D  
 Signal(s) : Signal #1: ECD1A.ch Signal #2: ECD2B.ch  
 Acq On : 12 Sep 2019 15:13  
 Operator : SM\AJ  
 Sample : K4779-20  
 Misc :  
 ALS Vial : 32 Sample Multiplier: 1

**Instrument :**  
 ECD\_R  
**Client Sampled :**  
 COAKO

**Manual Integrations**  
**APPROVED**  
 Ankita  
 9/13/2019 3:55:16 PM

Integration File signal 1: autoint1.e  
 Integration File signal 2: autoint2.e  
 Quant Time: Sep 13 02:48:02 2019  
 Quant Method : Z:\pestpcbsrv\HPCHEM1\ECD\_R\Method\PR091019CLP.M  
 Quant Title : GC EXTRACTABLES  
 QLast Update : Tue Sep 10 13:01:53 2019  
 Response via : Initial Calibration  
 Integrator: ChemStation

Volume Inj. : 1 µl  
 Signal #1 Phase : ZB MR1 Signal #2 Phase: ZB MR2  
 Signal #1 Info : 30Mx0.32mmx 0.5µm Signal #2 Info : 30M x 0.32mm x 0.25µm

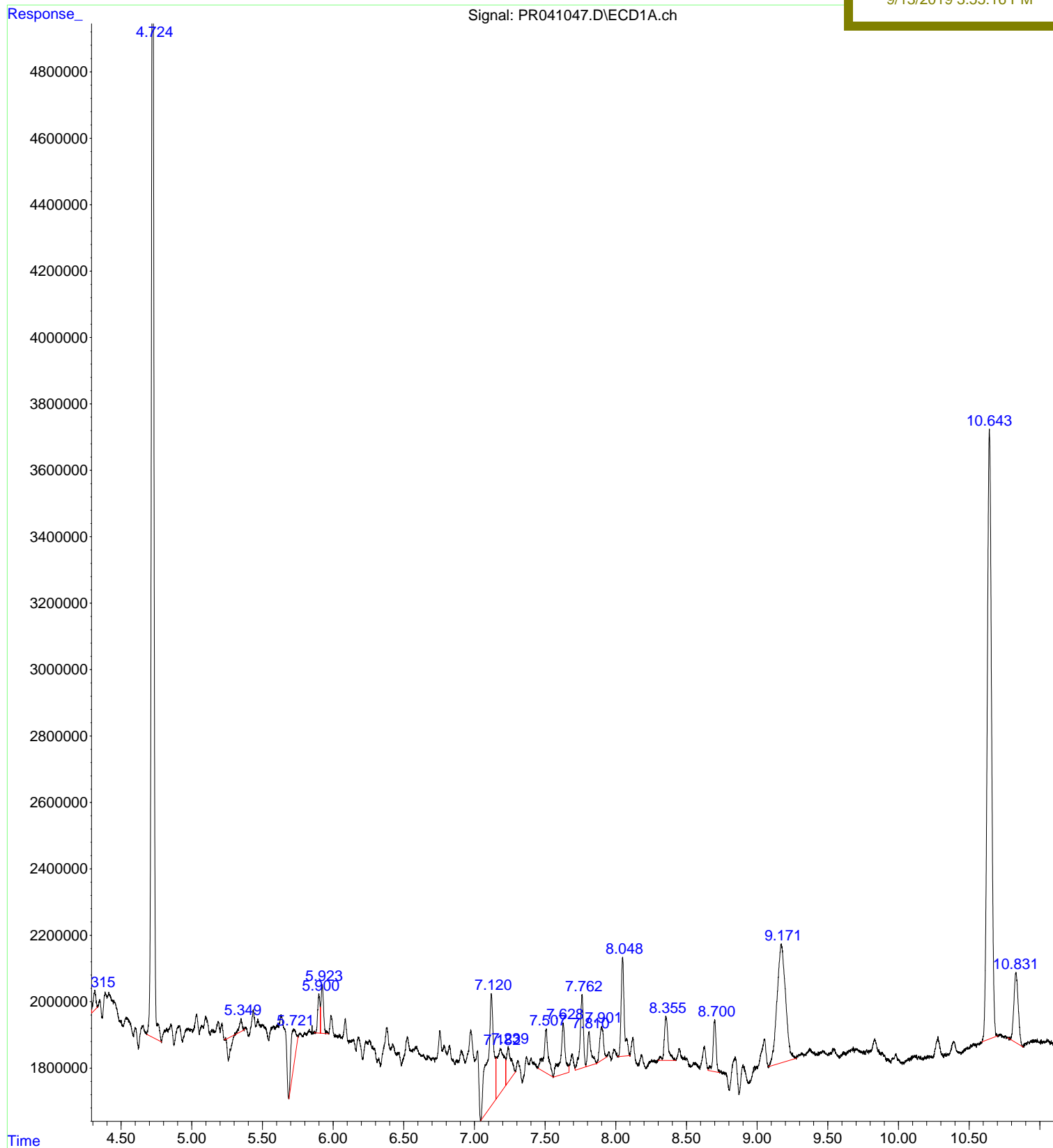


File :Z:\pestpcbsrv\HPCHEM1\ECD\_R\Data\PR091219\PR041047.D  
Operator : SM\AJ  
Acquired : 12 Sep 2019 15:13 using AcqMethod PCB.M  
Instrument : ECD\_R  
Sample Name: K4779-20  
Misc Info :  
Vial Number: 32

Instrument :  
ECD\_R  
ClientSampleId :  
C0AK0

Manual Integrations  
APPROVED

Ankita  
9/13/2019 3:55:16 PM



File : Z:\pestpcbsrv\HPCHEM1\ECD\_R\Data\PR091219\PR041047.D  
Operator : SM\AJ  
Acquired : 12 Sep 2019 15:13 using AcqMethod PCB.M  
Instrument : ECD\_R  
Sample Name: K4779-20  
Misc Info :  
Vial Number: 32

Instrument :  
ECD\_R  
ClientSampled :  
COAKO

Manual Integrations  
APPROVED

Ankita  
9/13/2019 3:55:16 PM

