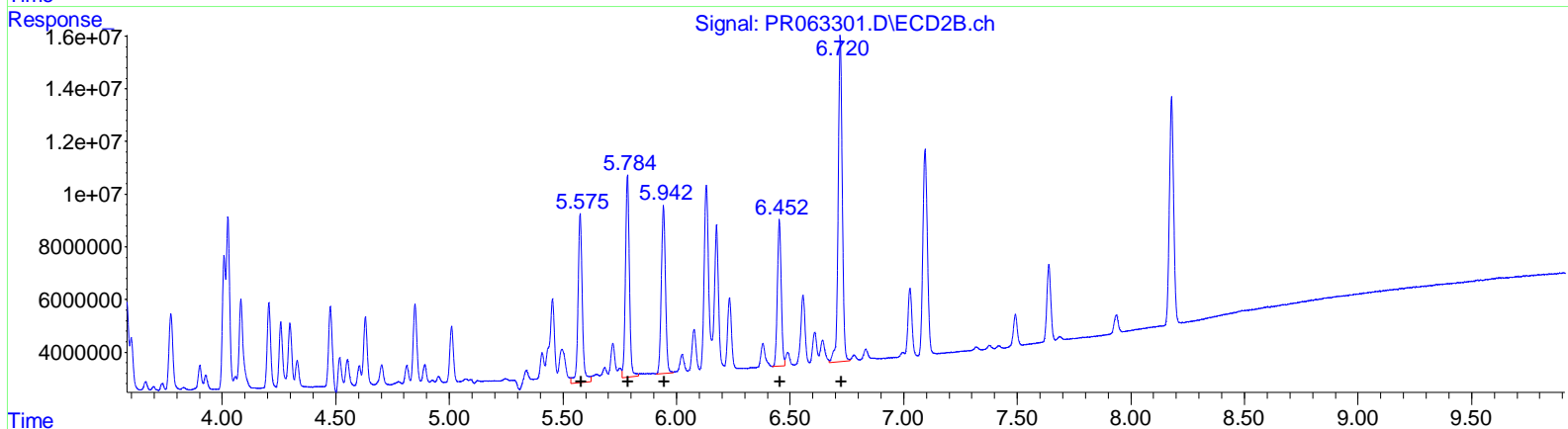
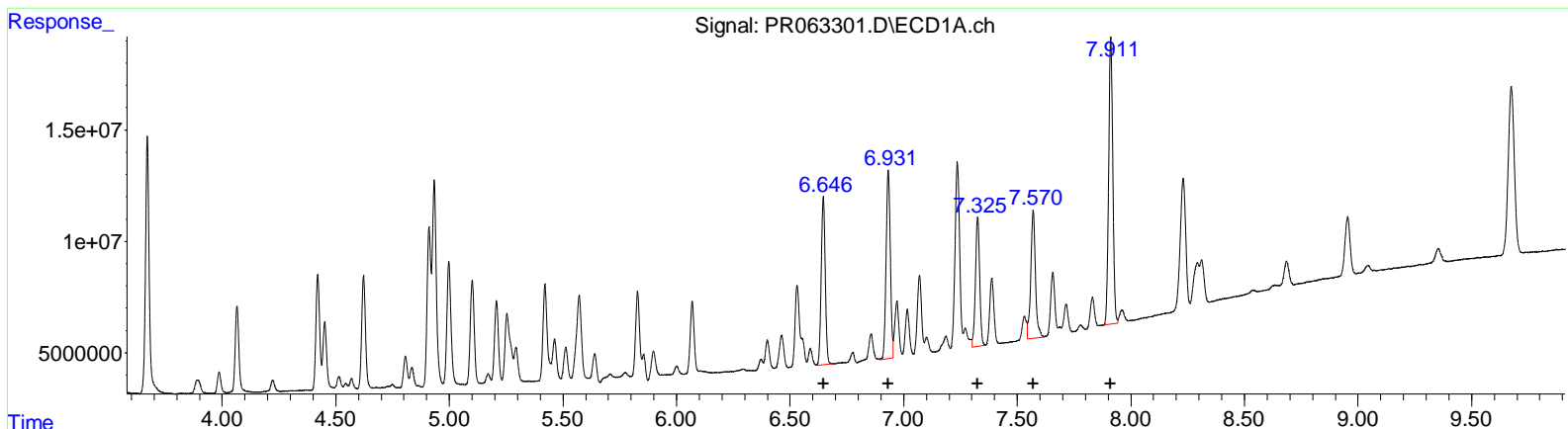


Data Path : Z:\pestpcbsrv\HPCHEM1\ECD_R\Data\PR091423\
 Data File : PR063301.D
 Signal(s) : Signal #1: ECD1A.ch Signal #2: ECD2B.ch
 Acq On : 14 Sep 2023 09:28
 Operator : YPVAJ
 Sample : AR1660CCC400
 Misc :
 ALS Vial : 3 Sample Multiplier: 1

Integration File signal 1: autoint1.e
 Integration File signal 2: autoint2.e
 Quant Time: Sep 14 22:16:33 2023
 Quant Method : Z:\pestpcbsrv\HPCHEM1\ECD_R\Method\PR091223CLP.M
 Quant Title : GC EXTRACTABLES
 QLast Update : Wed Sep 13 07:34:49 2023
 Response via : Initial Calibration
 Integrator: ChemStation

Volume Inj. : 1 µl
 Signal #1 Phase : ZB MR1 Signal #2 Phase: ZB MR2
 Signal #1 Info : 30Mx0.32mmx 0.5µm Signal #2 Info : 30M x 0.32mm x 0.25µm



QEdit

(31) AR-1260-1 (L7)

R.T.	Response	Conc
6.65	93007581	387.13
6.93	108840466	396.79
7.33	74687118	390.58
7.57	81651128	373.42
7.91	162230547	374.87

(31) AR-1260-1 #2 (L7)

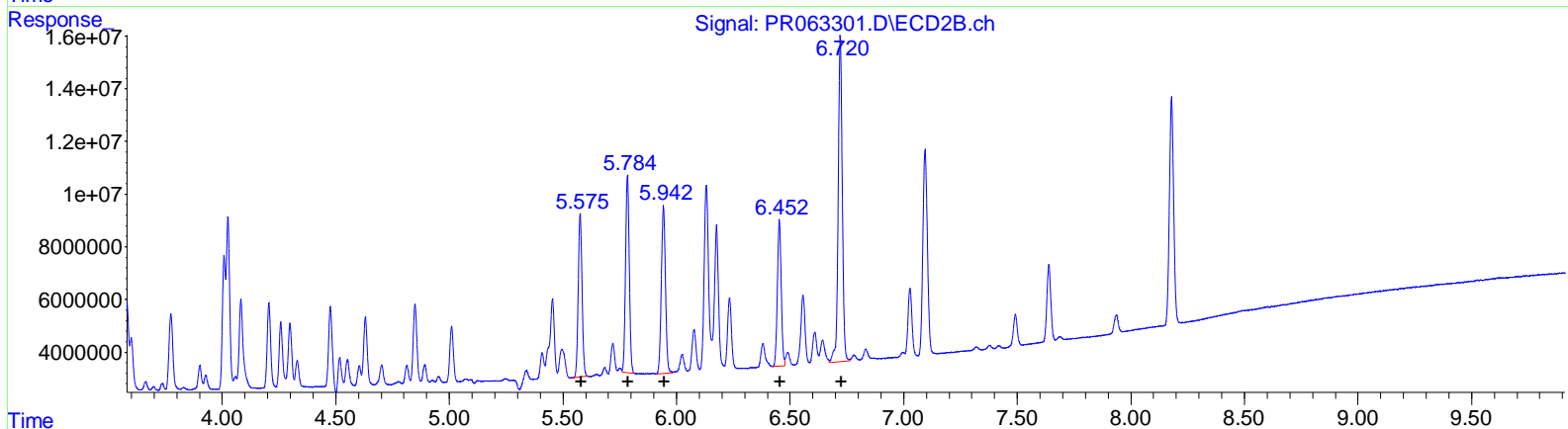
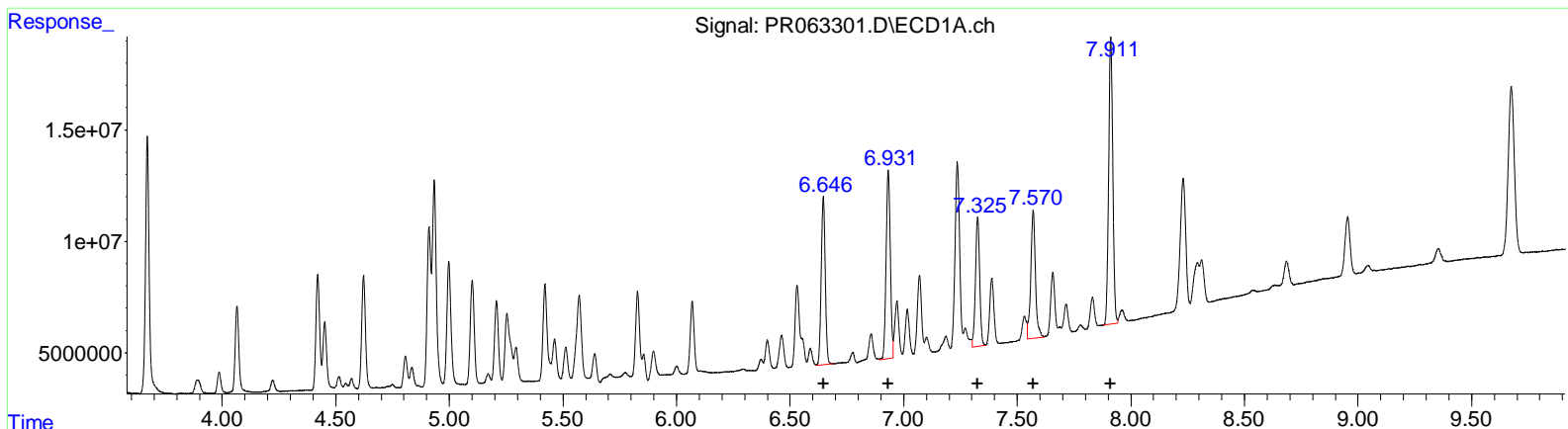
R.T.	Response	Conc
5.58	83294876	469.51
5.78	91953613	431.97
5.94	80493408	404.12
6.45	65346754	399.07
6.72	155004043	391.57

(+) = Expected Retention Time

Data Path : Z:\pestpcbsrv\HPCHEM1\ECD_R\Data\PR091423\
 Data File : PR063301.D
 Signal(s) : Signal #1: ECD1A.ch Signal #2: ECD2B.ch
 Acq On : 14 Sep 2023 09:28
 Operator : YPVAJ
 Sample : AR1660CCC400
 Misc :
 ALS Vial : 3 Sample Multiplier: 1

Integration File signal 1: autoint1.e
 Integration File signal 2: autoint2.e
 Quant Time: Sep 14 22:16:33 2023
 Quant Method : Z:\pestpcbsrv\HPCHEM1\ECD_R\Method\PR091223CLP.M
 Quant Title : GC EXTRACTABLES
 QLast Update : Wed Sep 13 07:34:49 2023
 Response via : Initial Calibration
 Integrator: ChemStation

Volume Inj. : 1 µl
 Signal #1 Phase : ZB MR1 Signal #2 Phase: ZB MR2
 Signal #1 Info : 30Mx0.32mmx 0.5µm Signal #2 Info : 30M x 0.32mm x 0.25µm



QEdit

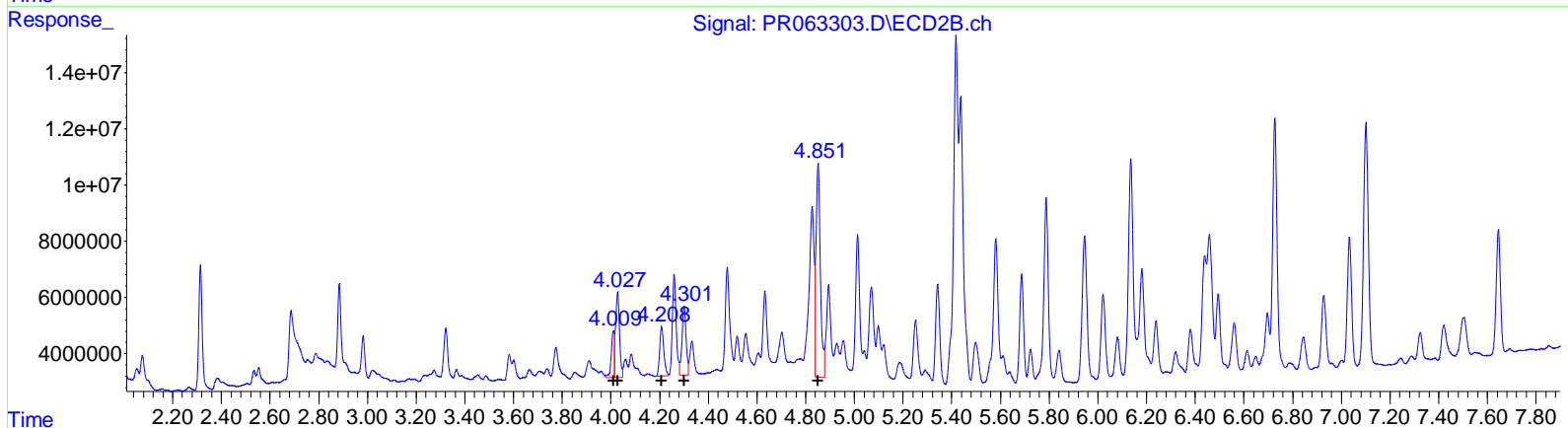
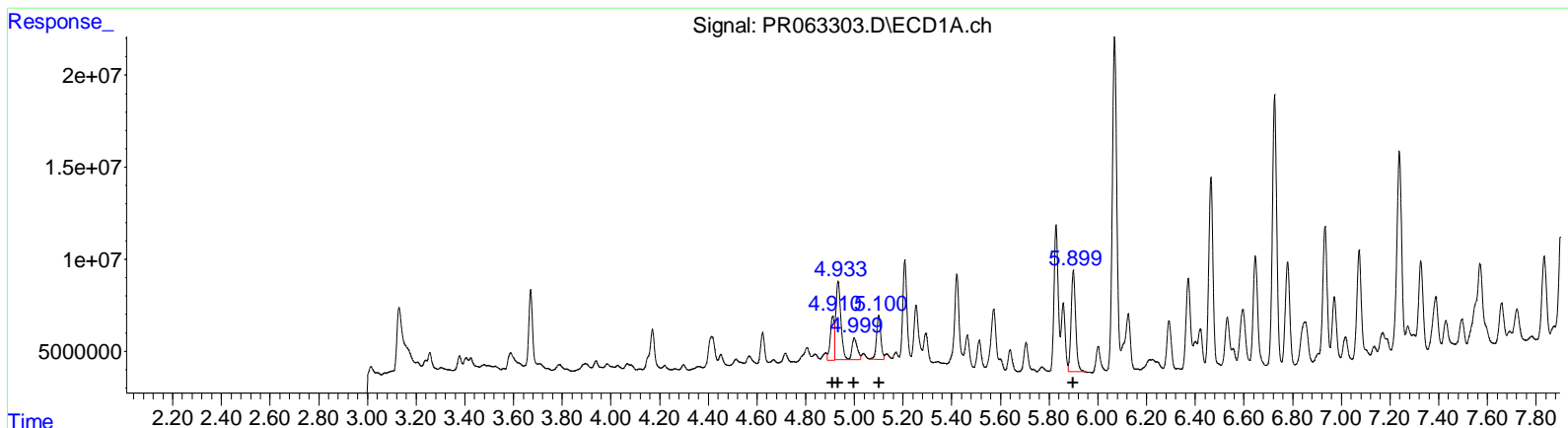
(31) AR-1260-1 #2 (L7)		
R.T.	Response	Conc
6.65	93007581	387.13
6.93	108840466	396.79
7.33	74687118	390.58
7.57	81651128	373.42
7.91	162230547	374.87
(31) AR-1260-1 #2 (L7)		
R.T.	Response	Conc
5.58	72039478	406.06
5.78	85465785	401.50
5.94	80493408	404.12
6.45	65346754	399.07
6.72	155004043	391.57

(+) = Expected Retention Time

Data Path : Z:\pestpcbsrv\HPCHEM1\ECD_R\Data\PR091423\
 Data File : PR063303.D
 Signal(s) : Signal #1: ECD1A.ch Signal #2: ECD2B.ch
 Acq On : 14 Sep 2023 09:57
 Operator : YPVAJ
 Sample : 04330-02
 Misc :
 ALS Vial : 8 Sample Multiplier: 1

Integration File signal 1: autoint1.e
 Integration File signal 2: autoint2.e
 Quant Time: Sep 14 22:17:29 2023
 Quant Method : Z:\pestpcbsrv\HPCHEM1\ECD_R\Method\PR091223CLP.M
 Quant Title : GC EXTRACTABLES
 QLast Update : Wed Sep 13 07:34:49 2023
 Response via : Initial Calibration
 Integrator: ChemStation

Volume Inj. : 1 µl
 Signal #1 Phase : ZB MR1 Signal #2 Phase: ZB MR2
 Signal #1 Info : 30Mx0.32mmx 0.5µm Signal #2 Info : 30M x 0.32mm x 0.25µm



QEdit

(16) AR-1242-1 (L4)		
R.T.	Response	Conc
4.91	26551699	159.27
4.93	62329463	261.21
5.00	17615947	124.07
5.10	29530338	251.96
5.90	70938618	611.75

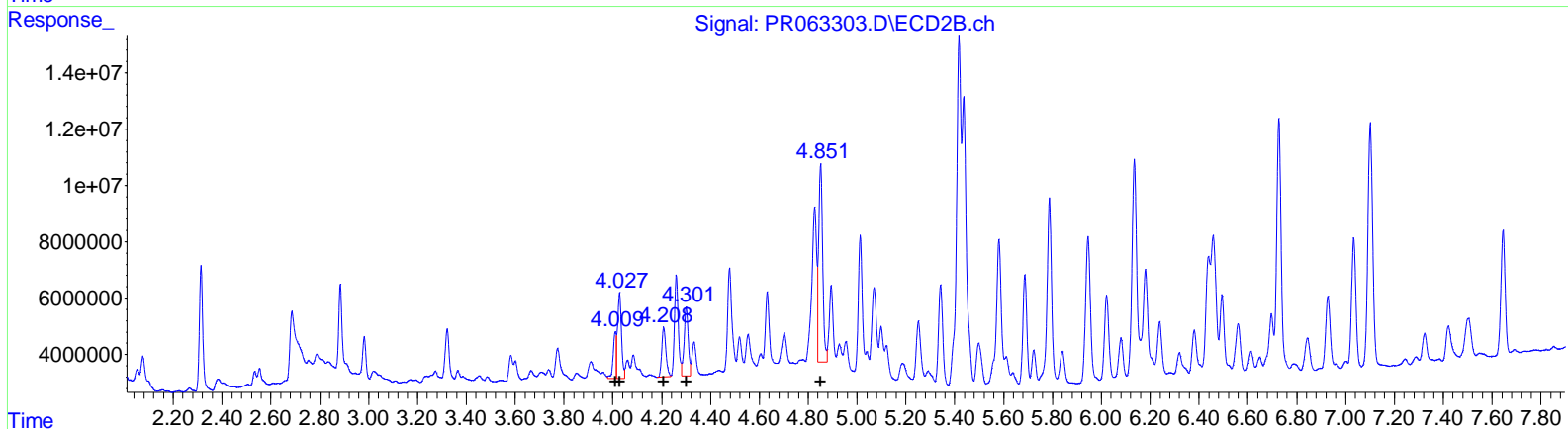
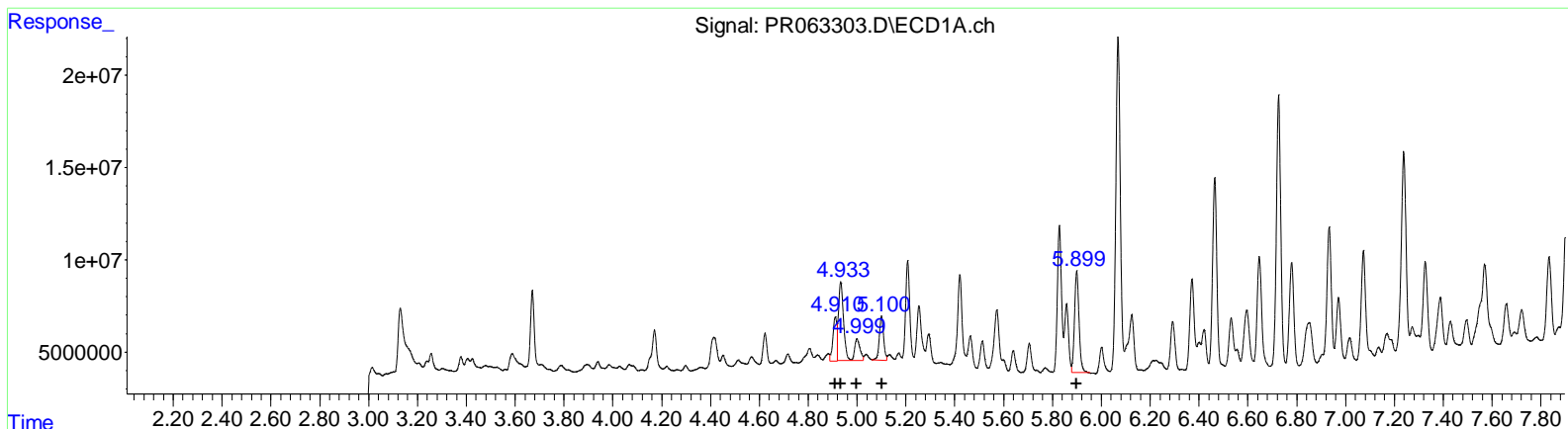
(16) AR-1242-1 #2 (L4)		
R.T.	Response	Conc
4.01	14532391	152.23
4.03	34170920	239.30
4.21	20991984	286.57
4.30	28462154	416.13
4.85	94688116	1082.45

(+) = Expected Retention Time

Data Path : Z:\pestpcbsrv\HPCHEM1\ECD_R\Data\PR091423\
 Data File : PR063303.D
 Signal(s) : Signal #1: ECD1A.ch Signal #2: ECD2B.ch
 Acq On : 14 Sep 2023 09:57
 Operator : YPVAJ
 Sample : 04330-02
 Misc :
 ALS Vial : 8 Sample Multiplier: 1

Integration File signal 1: autoint1.e
 Integration File signal 2: autoint2.e
 Quant Time: Sep 14 22:17:29 2023
 Quant Method : Z:\pestpcbsrv\HPCHEM1\ECD_R\Method\PR091223CLP.M
 Quant Title : GC EXTRACTABLES
 QLast Update : Wed Sep 13 07:34:49 2023
 Response via : Initial Calibration
 Integrator: ChemStation

Volume Inj. : 1 µl
 Signal #1 Phase : ZB MR1 Signal #2 Phase: ZB MR2
 Signal #1 Info : 30Mx0.32mmx 0.5µm Signal #2 Info : 30M x 0.32mm x 0.25µm



QEdit

(16) AR-1242-1 #2 (L4)

R.T.	Response	Conc
4.91	26551699	159.27
4.93	62329463	261.21
5.00	17615947	124.07
5.10	29530338	251.96
5.90	70938618	611.75

(16) AR-1242-1 #2 (L4)

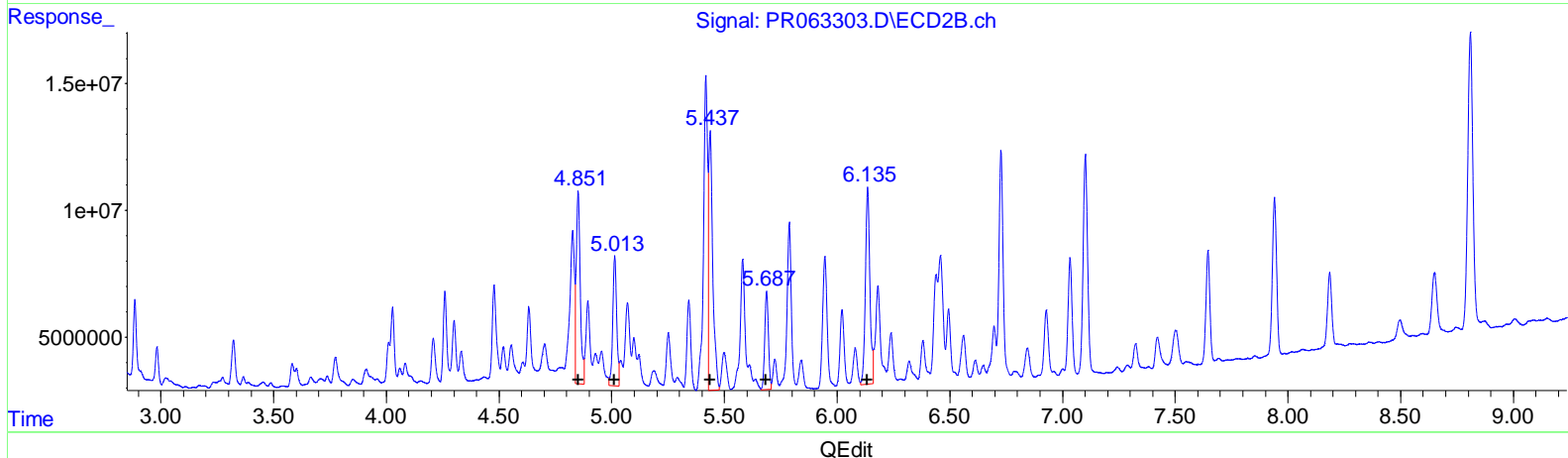
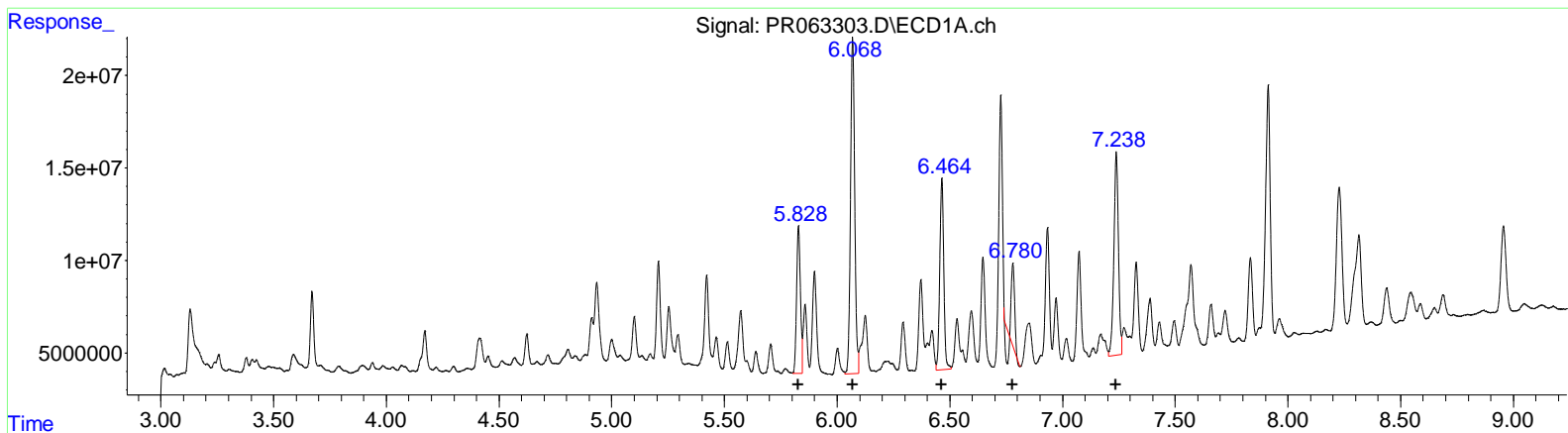
R.T.	Response	Conc
4.01	14532391	152.23
4.03	34170920	239.30
4.21	20991984	286.57
4.30	28462154	416.13
4.85	81810104	935.23

(+) = Expected Retention Time

Data Path : Z:\pestpcbsrv\HPCHEM1\ECD_R\Data\PR091423\
 Data File : PR063303.D
 Signal(s) : Signal #1: ECD1A.ch Signal #2: ECD2B.ch
 Acq On : 14 Sep 2023 09:57
 Operator : YPVAJ
 Sample : 04330-02
 Misc :
 ALS Vial : 8 Sample Multiplier: 1

Integration File signal 1: autoint1.e
 Integration File signal 2: autoint2.e
 Quant Time: Sep 14 22:17:29 2023
 Quant Method : Z:\pestpcbsrv\HPCHEM1\ECD_R\Method\PR091223CLP.M
 Quant Title : GC EXTRACTABLES
 QLast Update : Wed Sep 13 07:34:49 2023
 Response via : Initial Calibration
 Integrator: ChemStation

Volume Inj. : 1 µl
 Signal #1 Phase : ZB MR1 Signal #2 Phase: ZB MR2
 Signal #1 Info : 30Mx0.32mmx 0.5µm Signal #2 Info : 30M x 0.32mm x 0.25µm



(26) AR-1254-1 (L6)

R.T.	Response	Conc
5.83	94083520	428.77
6.07	234355361	707.21
6.46	128065995	380.15
6.78	32556616	140.48
7.24	154265381	631.69

(26) AR-1254-1 #2 (L6)

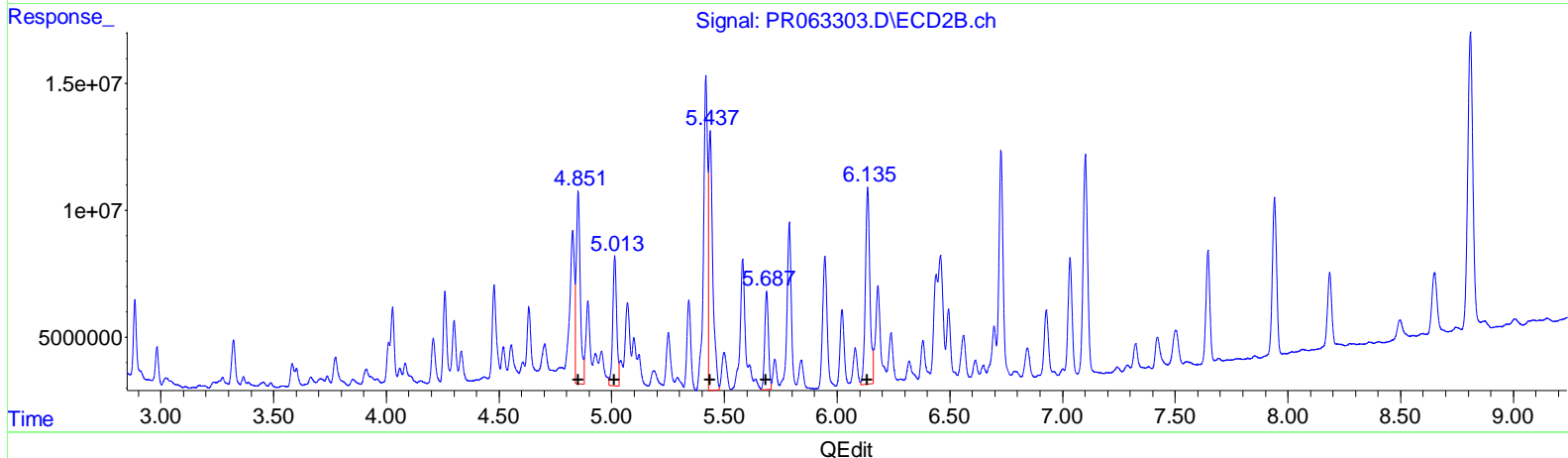
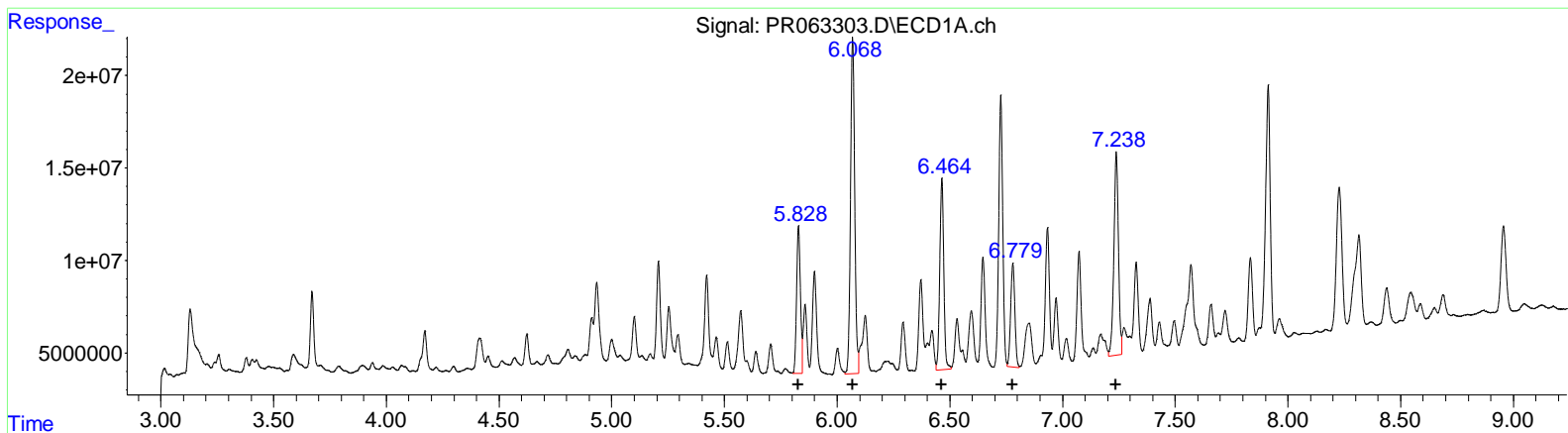
R.T.	Response	Conc
4.85	94688116	479.59
5.01	62664342	370.73
5.44	129409410	476.70
5.69	44218474	263.58
6.14	106921411	459.78

(+) = Expected Retention Time

Data Path : Z:\pestpcbsrv\HPCHEM1\ECD_R\Data\PR091423\
 Data File : PR063303.D
 Signal(s) : Signal #1: ECD1A.ch Signal #2: ECD2B.ch
 Acq On : 14 Sep 2023 09:57
 Operator : YPVAJ
 Sample : 04330-02
 Misc :
 ALS Vial : 8 Sample Multiplier: 1

Integration File signal 1: autoint1.e
 Integration File signal 2: autoint2.e
 Quant Time: Sep 14 22:17:29 2023
 Quant Method : Z:\pestpcbsrv\HPCHEM1\ECD_R\Method\PR091223CLP.M
 Quant Title : GC EXTRACTABLES
 QLast Update : Wed Sep 13 07:34:49 2023
 Response via : Initial Calibration
 Integrator: ChemStation

Volume Inj. : 1 µl
 Signal #1 Phase : ZB MR1 Signal #2 Phase: ZB MR2
 Signal #1 Info : 30Mx0.32mmx 0.5µm Signal #2 Info : 30M x 0.32mm x 0.25µm



QEdit

(26) AR-1254-1 #2 (L6)			
R.T.	Response	Conc	
5.83	94083520	428.77	
6.07	234355361	707.21	
6.46	128065995	380.15	
6.78	72559642	313.08	
7.24	154265381	631.69	
(26) AR-1254-1 #2 (L6)			
R.T.	Response	Conc	
4.85	94688116	479.59	
5.01	62664342	370.73	
5.44	129409410	476.70	
5.69	44218474	263.58	
6.14	106921411	459.78	

(+) = Expected Retention Time

Data Path : Z:\pestpcbsrv\HPCHEM1\ECD_R\Data\PR091423\
 Data File : PR063303.D
 Signal(s) : Signal #1: ECD1A.ch Signal #2: ECD2B.ch
 Acq On : 14 Sep 2023 09:57
 Operator : YP\AJ
 Sample : 04330-02
 Misc :
 ALS Vial : 8 Sample Multiplier: 1

Integration File signal 1: autoint1.e
 Integration File signal 2: autoint2.e
 Quant Time: Sep 14 22:17:29 2023
 Quant Method : Z:\pestpcbsrv\HPCHEM1\ECD_R\Method\PR091223CLP.M
 Quant Title : GC EXTRACTABLES
 QLast Update : Wed Sep 13 07:34:49 2023
 Response via : Initial Calibration
 Integrator: ChemStation

Volume Inj. : 1 µl
 Signal #1 Phase : ZB MR1 Signal #2 Phase: ZB MR2
 Signal #1 Info : 30Mx0.32mmx 0.5µm Signal #2 Info : 30M x 0.32mm x 0.25µm

Compound	RT#1	RT#2	Resp#1	Resp#2	ng/ml	ng/ml

System Monitoring Compounds						
1) SA Tetrachloro...	3.670	2.884	43989317	29730083	6.778	8.696 #
2) SA Decachloro...	9.678	8.185	52432919	37607972	14.159	12.584
Target Compounds						
16) L4 AR-1242-1	4.911	4.010	26551699	14532391	159.265	152.226
17) L4 AR-1242-2	4.933	4.028	62329463	34170920	261.215	239.299
18) L4 AR-1242-3	4.999	4.208	17615947	20991984	124.068	286.569 #
19) L4 AR-1242-4	5.100	4.301	29530338	28462154	251.958	416.132 #
20) L4 AR-1242-5	5.899	4.851	70938618	81810104	611.745	935.232m#
26) L6 AR-1254-1	5.828	4.851	94083520	94688116	428.768	479.587
27) L6 AR-1254-2	6.069	5.013	234.4E6	62664342	707.207	370.728 #
28) L6 AR-1254-3	6.465	5.437	128.1E6	129.4E6	380.147	476.701 #
29) L6 AR-1254-4	6.779	5.687	72559642	44218474	313.083m	263.575
30) L6 AR-1254-5	7.239	6.136	154.3E6	106.9E6	631.689	459.778 #
31) L7 AR-1260-1	6.647	5.581	78098727	75491590	325.074	425.521 #
32) L7 AR-1260-2	6.933	5.788	98089816	87732136	357.601	412.143
33) L7 AR-1260-3	7.327	5.946	64085083	72463547	335.136	363.808
34) L7 AR-1260-4	7.570	6.458	95918370	63539166	438.667	388.031
35) L7 AR-1260-5	7.913	6.727	193.9E6	114.4E6	447.963	288.905 #

(f)=RT Delta > 1/2 Window (#)=Amounts differ by > 25% (m)=manual int.

Data Path : Z:\pestpcbsrv\HPCHEM1\ECD_R\Data\PR091423\
 Data File : PR063303.D
 Signal(s) : Signal #1: ECD1A.ch Signal #2: ECD2B.ch
 Acq On : 14 Sep 2023 09:57
 Operator : YPAJ
 Sample : 04330-02
 Misc :
 ALS Vial : 8 Sample Multiplier: 1

Integration File signal 1: autoint1.e
 Integration File signal 2: autoint2.e
 Quant Time: Sep 14 22:17:29 2023
 Quant Method : Z:\pestpcbsrv\HPCHEM1\ECD_R\Method\PR091223CLP.M
 Quant Title : GC EXTRACTABLES
 QLast Update : Wed Sep 13 07:34:49 2023
 Response via : Initial Calibration
 Integrator: ChemStation

Volume Inj. : 1 µl
 Signal #1 Phase : ZB MR1 Signal #2 Phase: ZB MR2
 Signal #1 Info : 30Mx0.32mmx 0.5µm Signal #2 Info : 30M x 0.32mm x 0.25µm

