

Data Path : Z:\pestpcbsrv\HPCHEM1\ECD_R\Data\PR091819\
 Data File : PR041234.D
 Signal(s) : Signal #1: ECD1A.ch Signal #2: ECD2B.ch
 Acq On : 18 Sep 2019 14:07
 Operator : SM\AJ
 Sample : PB123042BS
 Misc :
 ALS Vial : 18 Sample Multiplier: 1

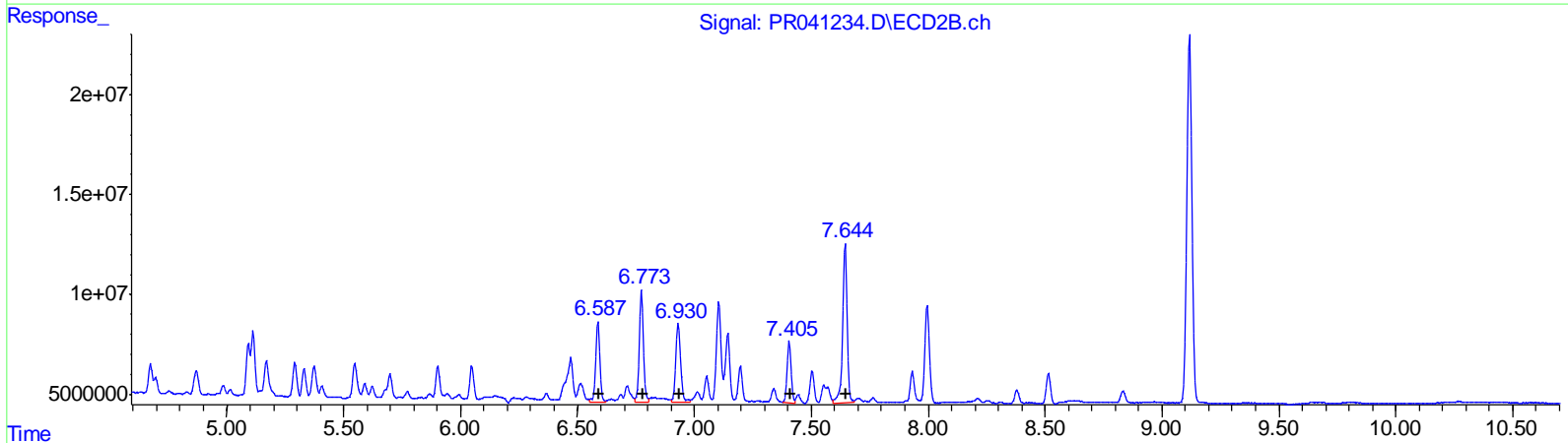
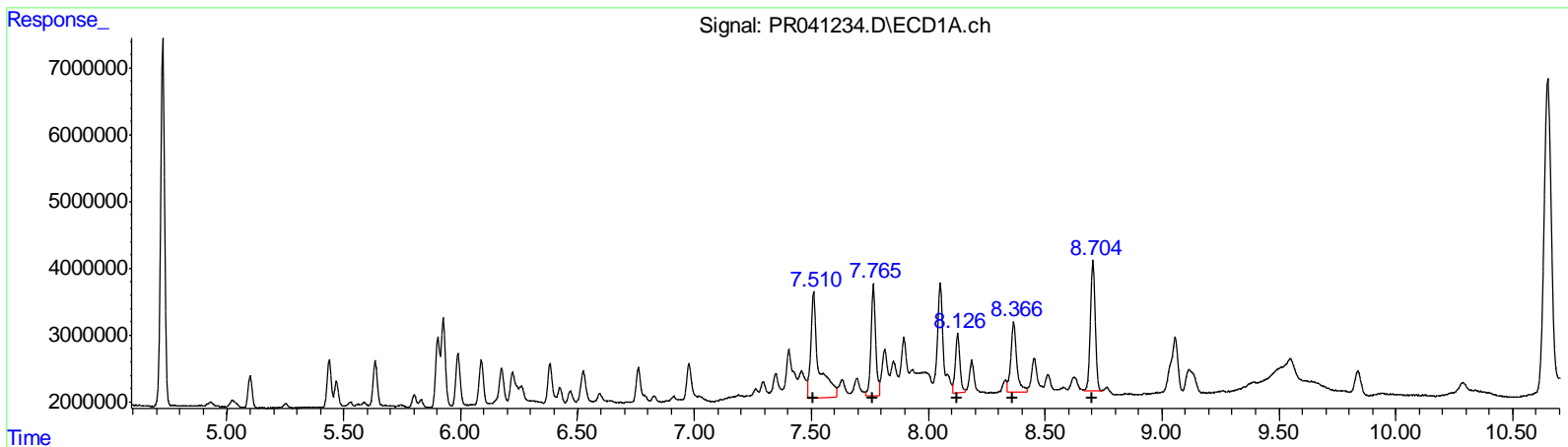
Instrument :
 ECD_R
 Client Sampled :
 ALCS42

Manual Integrations
 APPROVED

Ankita
 9/19/2019 4:39:40 PM

Integration File signal 1: autoint1.e
 Integration File signal 2: autoint2.e
 Quant Time: Sep 18 23:47:58 2019
 Quant Method : Z:\pestpcbsrv\HPCHEM1\ECD_R\Method\PR091019CLP.M
 Quant Title : GC EXTRACTABLES
 QLast Update : Tue Sep 10 13:01:53 2019
 Response via : Initial Calibration
 Integrator: ChemStation

Volume Inj. : 1 µl
 Signal #1 Phase : ZB MR1 Signal #2 Phase: ZB MR2
 Signal #1 Info : 30Mx0.32mmx 0.5µm Signal #2 Info : 30M x 0.32mm x 0.25µm



QEdit

(31) AR-1260-1 (L7)	R.T.	Response	Conc
	7.51	37439630	242.53
	7.77	22640519	123.07
	8.13	12011010	86.52
	8.37	18088943	111.25
	8.70	28136349	82.31
(31) AR-1260-1 #2 (L7)	R.T.	Response	Conc
	6.59	51452258	101.00
	6.77	68242101	107.35
	6.93	57182420	99.15
	7.41	36692506	74.32
	7.64	106850535	82.13

(+) = Expected Retention Time

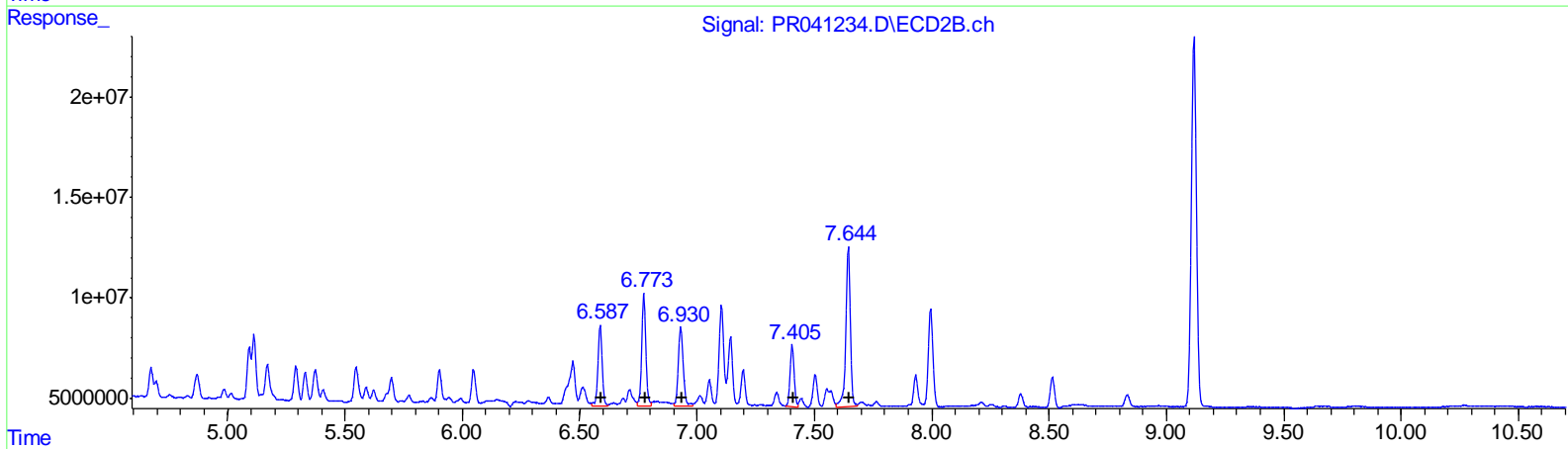
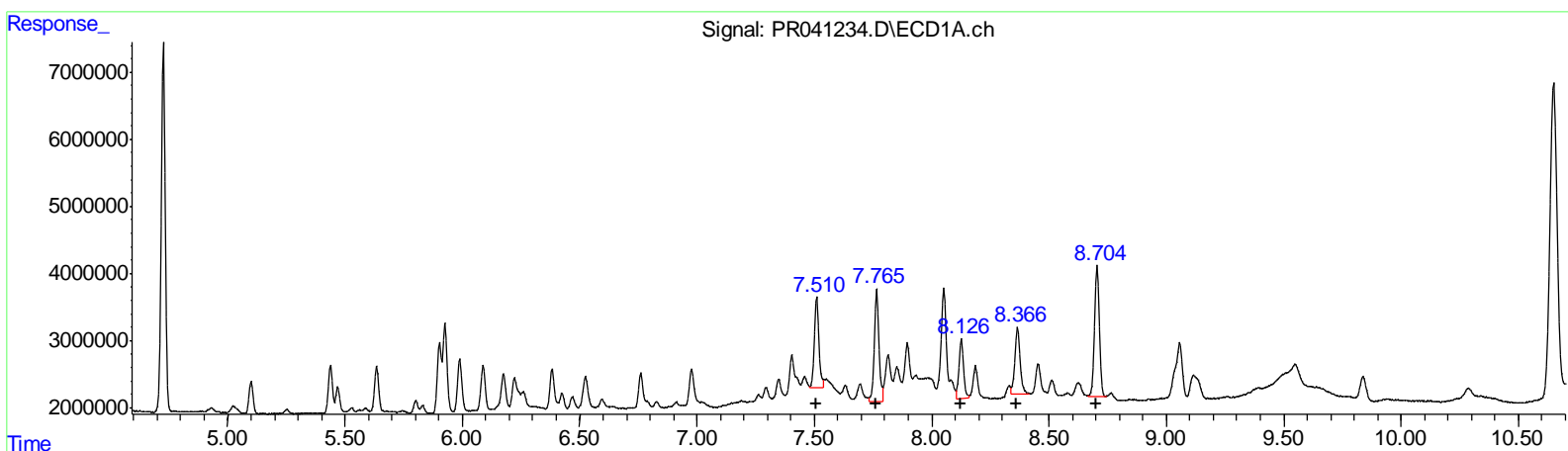
Data Path : Z:\pestpcbsrv\HPCHEM1\ECD_R\Data\PR091819\
 Data File : PR041234.D
 Signal(s) : Signal #1: ECD1A.ch Signal #2: ECD2B.ch
 Acq On : 18 Sep 2019 14:07
 Operator : SM\AJ
 Sample : PB123042BS
 Misc :
 ALS Vial : 18 Sample Multiplier: 1

Instrument :
 ECD_R
Client Sampled :
 ALCS42

Manual Integrations
APPROVED
 Ankita
 9/19/2019 4:39:40 PM

Integration File signal 1: autoint1.e
 Integration File signal 2: autoint2.e
 Quant Time: Sep 18 23:47:58 2019
 Quant Method : Z:\pestpcbsrv\HPCHEM1\ECD_R\Method\PR091019CLP.M
 Quant Title : GC EXTRACTABLES
 QLast Update : Tue Sep 10 13:01:53 2019
 Response via : Initial Calibration
 Integrator: ChemStation

Volume Inj. : 1 µl
 Signal #1 Phase : ZB MR1 Signal #2 Phase: ZB MR2
 Signal #1 Info : 30Mx0.32mmx 0.5µm Signal #2 Info : 30M x 0.32mm x 0.25µm



QEdit

(31) AR-1260-1 (L7)	R.T.	Response	Conc
	7.51	17698991	114.65
	7.77	22640519	123.07
	8.13	12011010	86.52
	8.37	15666914	96.35
	8.70	28136349	82.31

(31) AR-1260-1 #2 (L7)	R.T.	Response	Conc
	6.59	51452258	101.00
	6.77	68242101	107.35
	6.93	57182420	99.15
	7.41	36692506	74.32
	7.64	106850535	82.13

(+) = Expected Retention Time

Data Path : Z:\pestpcbsrv\HPCHEM1\ECD_R\Data\PR091819\
 Data File : PR041234.D
 Signal(s) : Signal #1: ECD1A.ch Signal #2: ECD2B.ch
 Acq On : 18 Sep 2019 14:07
 Operator : SM\AJ
 Sample : PB123042BS
 Misc :
 ALS Vial : 18 Sample Multiplier: 1

Instrument :
 ECD_R
 Client Sampled :
 ALCS42

Integration File signal 1: autoint1.e
 Integration File signal 2: autoint2.e
 Quant Time: Sep 18 23:47:58 2019
 Quant Method : Z:\pestpcbsrv\HPCHEM1\ECD_R\Method\PR091019CLP.M
 Quant Title : GC EXTRACTABLES
 QLast Update : Tue Sep 10 13:01:53 2019
 Response via : Initial Calibration
 Integrator: ChemStation

Manual Integrations
 APPROVED

Ankita
 9/19/2019 4:39:40 PM

Volume Inj. : 1 µl
 Signal #1 Phase : ZB MR1 Signal #2 Phase: ZB MR2
 Signal #1 Info : 30Mx0.32mmx 0.5µm Signal #2 Info : 30M x 0.32mm x 0.25µm

Compound	RT#1	RT#2	Resp#1	Resp#2	ng/ml	ng/ml

System Monitoring Compounds						
1) SA Tetrachlo...	4.726	3.993	64723307	262.6E6	21.060	19.718
2) SA Decachlor...	10.650	9.117	95721242	277.7E6	34.394	28.412
Target Compounds						
3) L1 AR-1016-1	5.903	5.092	12265734	27659473	108.780	104.500
4) L1 AR-1016-2	5.926	5.112	16719729	37662725	105.077	102.618
5) L1 AR-1016-3	5.989	5.291	10235135	20937119	109.234	103.053
6) L1 AR-1016-4	6.089	5.330	8731049	16525251	111.883	101.186
7) L1 AR-1016-5	6.382	5.547	7638167	25221226	97.986	108.522
31) L7 AR-1260-1	7.510	6.587	17698991	51452258	114.651m	100.996
32) L7 AR-1260-2	7.765	6.773	22640519	68242101	123.069	107.347
33) L7 AR-1260-3	8.126	6.930	12011010	57182420	86.517	99.145
34) L7 AR-1260-4	8.366	7.405	15666914	36692506	96.353m	74.319
35) L7 AR-1260-5	8.705	7.645	28136349	106.9E6	82.312	82.125

AJ
 09/20/19

(f)=RT Delta > 1/2 Window (#)=Amounts differ by > 25% (m)=manual int.