

Data Path : Z:\pestpcbsrv\HPCHEM1\ECD_R\Data\PR091820\
 Data File : PR047325.D
 Signal(s) : Signal #1: ECD1A.ch Signal #2: ECD2B.ch
 Acq On : 18 Sep 2020 14:29
 Operator : DD\AJ
 Sample : AR1248CCC400
 Misc :
 ALS Vial : 5 Sample Multiplier: 1

Instrument :
 ECD_R
 ClientSampleId :
 AR1248338

Integration File signal 1: autoint1.e
 Integration File signal 2: autoint2.e
 Quant Time: Sep 19 01:24:09 2020
 Quant Method : Z:\pestpcbsrv\HPCHEM1\ECD_R\Method\PR090520CLP.M
 Quant Title : GC EXTRACTABLES
 QLast Update : Sat Sep 05 06:49:21 2020
 Response via : Initial Calibration
 Integrator: ChemStation

Volume Inj. : 1 µl
 Signal #1 Phase : ZB MR1 Signal #2 Phase: ZB MR2
 Signal #1 Info : 30Mx0.32mmx 0.5µm Signal #2 Info : 30M x 0.32mm x 0.25µm

Compound	RT#1	RT#2	Resp#1	Resp#2	ng/ml	ng/ml

System Monitoring Compounds						
1) SA Tetrachlo...	4.761	3.897	25278201	83846052	19.194	18.692
2) SA Decachlor...	10.715	8.987	65404128	444.6E6	39.013	34.364
Target Compounds						
3) L1 AR-1016-1	5.938	4.987	14369142	36142664	259.833	227.220
4) L1 AR-1016-2	5.962	5.007	17206088	45975861	219.591	169.756
5) L1 AR-1016-3	6.025	5.185	8552521	29707070	177.763	184.925
6) L1 AR-1016-4	6.126	5.225	9250405	41770174	233.307	483.289 #
7) L1 AR-1016-5	6.420	5.441	23697423	61606268	580.932	427.532 #
8) L2 AR-1221-1	0.000	4.107	0	680545	N.D.	14.728 #
9) L2 AR-1221-2	5.071	4.195	792033	2097066	71.882	57.534
10) L2 AR-1221-3	5.135	4.272	1752093	6188399	47.234	50.276
11) L3 AR-1232-1	5.135	4.272	1752093	6188399	58.471	61.113
12) L3 AR-1232-2	5.670	5.007	6147584	45975861	358.695	405.719
13) L3 AR-1232-3	5.962	5.185	17206088	29707070	507.541	434.978
14) L3 AR-1232-4	6.126	5.268	9250405	48637532	552.022	1101.517 #
15) L3 AR-1232-5	6.212	5.441	20240006	61606268	1511.062	1034.401 #
16) L4 AR-1242-1	5.938	4.987	14369142	36142664	314.293	287.879
17) L4 AR-1242-2	5.962	5.007	17206088	45975861	269.823	215.998
18) L4 AR-1242-3	6.025	5.185	8552521	29707070	212.822	233.880
19) L4 AR-1242-4	6.126	5.268	9250405	48637532	277.389	519.783 #
20) L4 AR-1242-5	6.864	5.794	27242444	100.3E6	705.311	649.413
21) L5 AR-1248-1	5.938	4.987	14369142	36142664	421.712	376.402
22) L5 AR-1248-2	6.212	5.225	20240006	41770174	409.237	358.691
23) L5 AR-1248-3	6.420	5.268	23697423	48637532	436.314	367.455
24) L5 AR-1248-4	6.824	5.441	28698901	61606268	446.571	337.655
25) L5 AR-1248-5	6.864	5.837	27242444	81877478	447.463	350.687
26) L6 AR-1254-1	6.797	5.794	21643946	100.3E6	329.707	352.725
27) L6 AR-1254-2	7.023	5.942	29373308	28306540	287.888	115.899 #
28) L6 AR-1254-3	7.386	6.350	17443359	58066436	159.990	113.094 #
29) L6 AR-1254-4	7.671	6.578	12459672	46185811	147.042	118.764
30) L6 AR-1254-5	8.092	6.999	8010363	13307120	84.742	24.173 #
31) L7 AR-1260-1	7.550	6.496	2939200	20630831	36.069	68.698 #
32) L7 AR-1260-2	7.802	6.668	3877045	5536490	38.718	12.356 #
33) L7 AR-1260-3	8.158	6.824	3321741	6436516	42.186	16.065 #
34) L7 AR-1260-4	8.399	7.300	2480405	6759648	26.867	16.867 #
35) L7 AR-1260-5	8.746	7.540	1568008	18200517	8.479	11.205 #
36) L8 AR-1262-1	8.158	6.999	3321741	13307120	29.550	43.679 #
37) L8 AR-1262-2	8.746	7.540	1568008	18200517	7.584	9.986 #
38) L8 AR-1262-3	9.089	7.828	1738649	2816583	11.929	3.755 #
39) L8 AR-1262-4	9.174	7.891	961054	4823835	8.702	3.735 #
40) L8 AR-1262-5	0.000	8.401	0	6912409	N.D.	9.645 #
41) L9 AR-1268-1	9.089	7.828	1738649	2816583	6.927	1.211 #
42) L9 AR-1268-2	9.174	7.891	961054	4823835	4.147	2.197 #

Data Path : Z:\pestpcbsrv\HPCHEM1\ECD_R\Data\PR091820\
 Data File : PR047325.D
 Signal(s) : Signal #1: ECD1A.ch Signal #2: ECD2B.ch
 Acq On : 18 Sep 2020 14:29
 Operator : DD\AJ
 Sample : AR1248CCC400
 Misc :
 ALS Vial : 5 Sample Multiplier: 1

Instrument :
 ECD_R
 ClientSampleId :
 AR1248338

Integration File signal 1: autoint1.e
 Integration File signal 2: autoint2.e
 Quant Time: Sep 19 01:24:09 2020
 Quant Method : Z:\pestpcbsrv\HPCHEM1\ECD_R\Method\PR090520CLP.M
 Quant Title : GC EXTRACTABLES
 QLast Update : Sat Sep 05 06:49:21 2020
 Response via : Initial Calibration
 Integrator: ChemStation

Volume Inj. : 1 µl
 Signal #1 Phase : ZB MR1 Signal #2 Phase: ZB MR2
 Signal #1 Info : 30Mx0.32mmx 0.5µm Signal #2 Info : 30M x 0.32mm x 0.25µm

	Compound	RT#1	RT#2	Resp#1	Resp#2	ng/ml	ng/ml
43)	L9 AR-1268-3	9.389f	8.104	5862814	1372614	29.864	0.712 #
44)	L9 AR-1268-4	0.000	8.401	0	6912409	N.D.	8.305 #
45)	L9 AR-1268-5	10.344	8.712	1299532	2449802	1.971	0.424 #

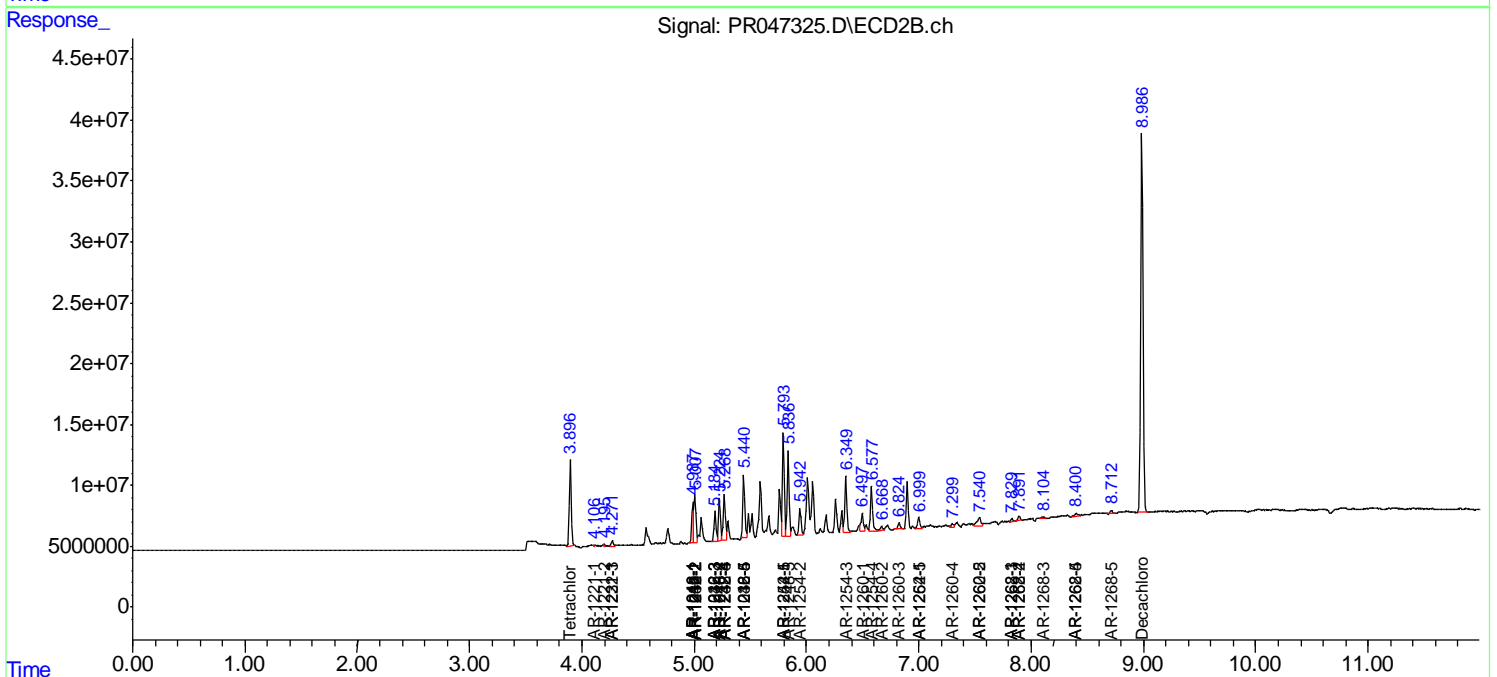
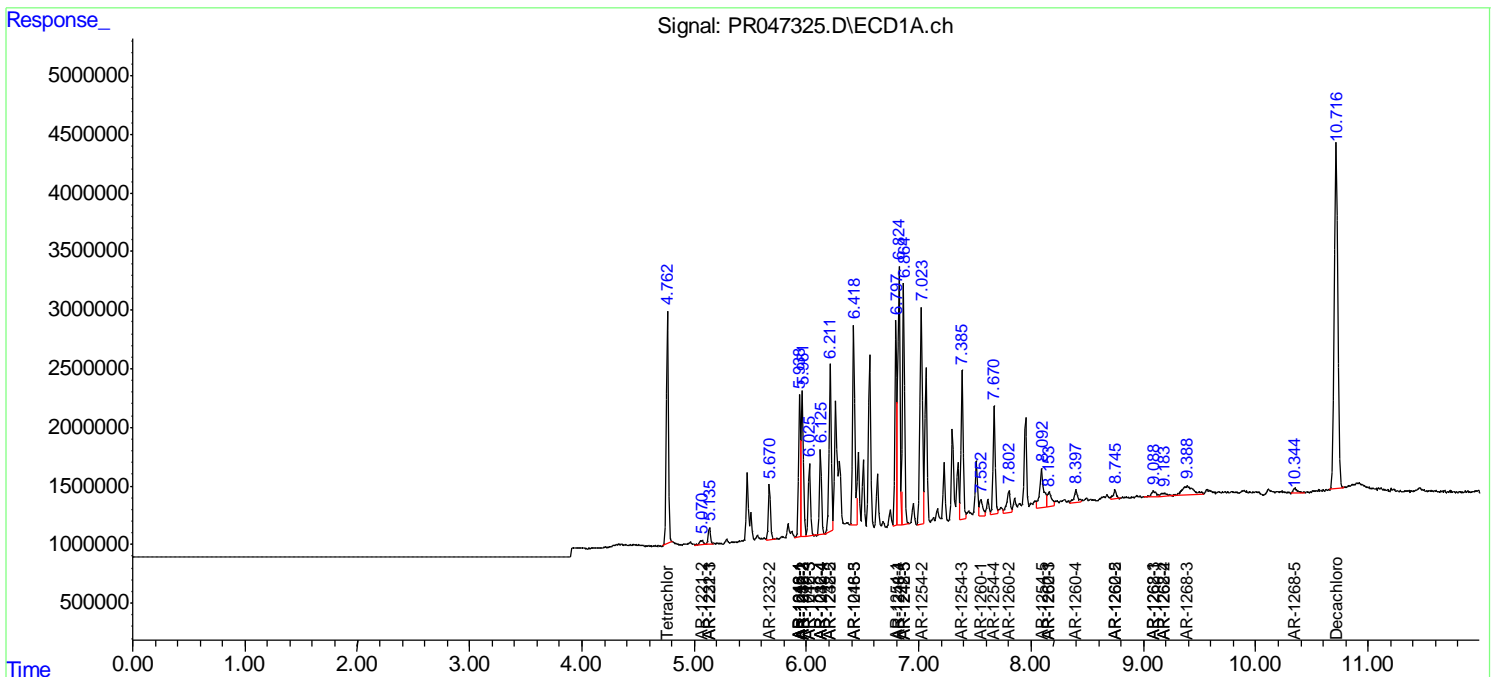
(f)=RT Delta > 1/2 Window (#)=Amounts differ by > 25% (m)=manual int.

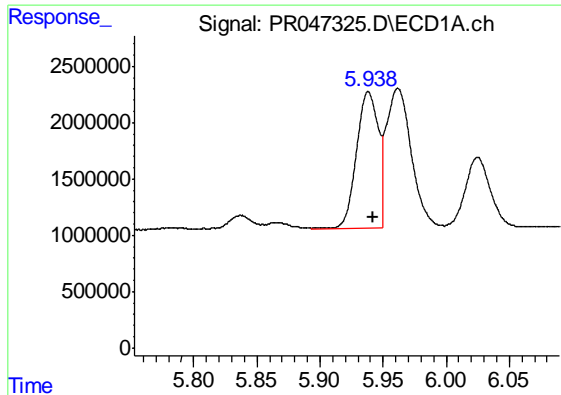
Data Path : Z:\pestpcbsrv\HPCHEM1\ECD_R\Data\PR091820\
 Data File : PR047325.D
 Signal(s) : Signal #1: ECD1A.ch Signal #2: ECD2B.ch
 Acq On : 18 Sep 2020 14:29
 Operator : DD\AJ
 Sample : AR1248CCC400
 Misc :
 ALS Vial : 5 Sample Multiplier: 1

Instrument :
 ECD_R
 ClientSampled :
 AR1248338

Integration File signal 1: autoint1.e
 Integration File signal 2: autoint2.e
 Quant Time: Sep 19 01:24:09 2020
 Quant Method : Z:\pestpcbsrv\HPCHEM1\ECD_R\Method\PR090520CLP.M
 Quant Title : GC EXTRACTABLES
 QLast Update : Sat Sep 05 06:49:21 2020
 Response via : Initial Calibration
 Integrator: ChemStation

Volume Inj. : 1 µl
 Signal #1 Phase : ZB MR1 Signal #2 Phase: ZB MR2
 Signal #1 Info : 30Mx0.32mmx 0.5µm Signal #2 Info : 30M x 0.32mm x 0.25µm

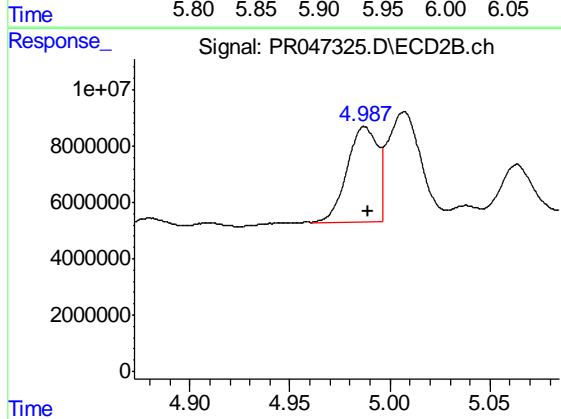




#3 AR-1016-1

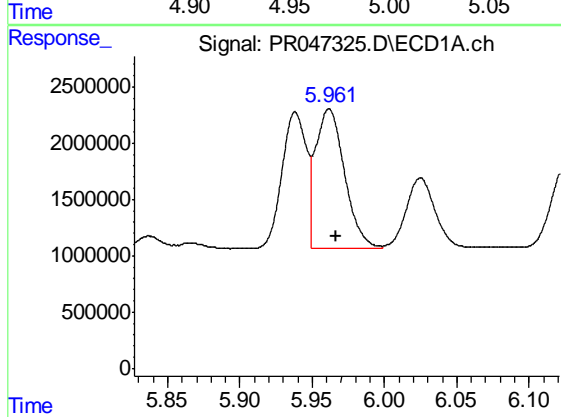
R.T.: 5.938 min
Delta R.T.: -0.004 min
Response: 14369142
Conc: 259.83 ng/ml

Instrument :
ECD_R
ClientSampleId :
AR1248338



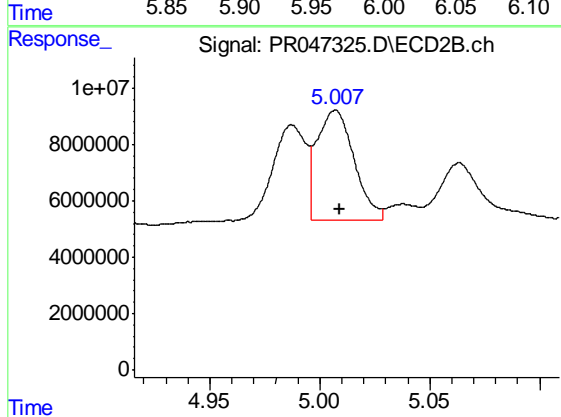
#3 AR-1016-1

R.T.: 4.987 min
Delta R.T.: -0.002 min
Response: 36142664
Conc: 227.22 ng/ml



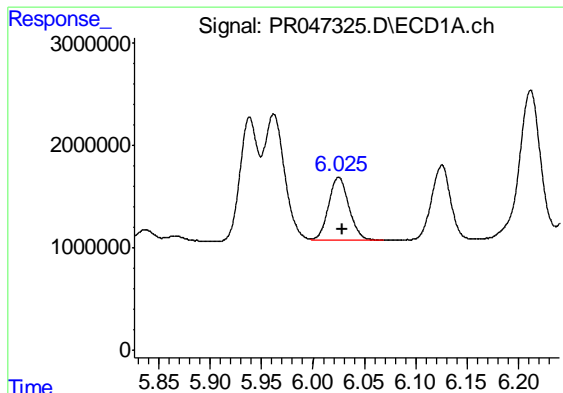
#4 AR-1016-2

R.T.: 5.962 min
Delta R.T.: -0.004 min
Response: 17206088
Conc: 219.59 ng/ml



#4 AR-1016-2

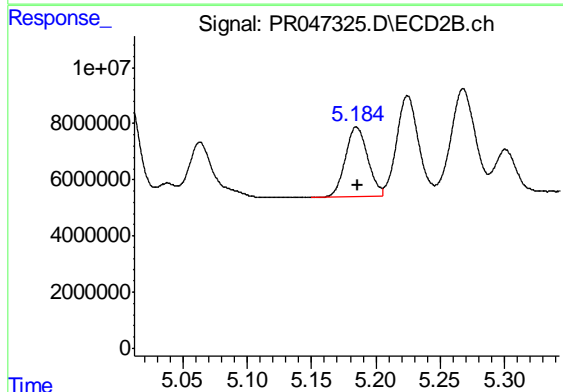
R.T.: 5.007 min
Delta R.T.: -0.002 min
Response: 45975861
Conc: 169.76 ng/ml



#5 AR-1016-3

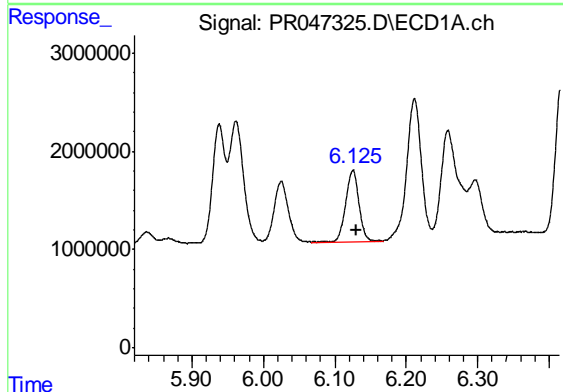
R.T.: 6.025 min
 Delta R.T.: -0.004 min
 Response: 8552521
 Conc: 177.76 ng/ml

Instrument :
 ECD_R
 ClientSampleId :
 AR1248338



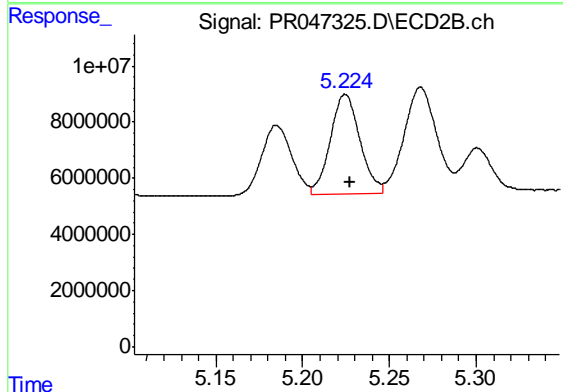
#5 AR-1016-3

R.T.: 5.185 min
 Delta R.T.: -0.002 min
 Response: 29707070
 Conc: 184.93 ng/ml



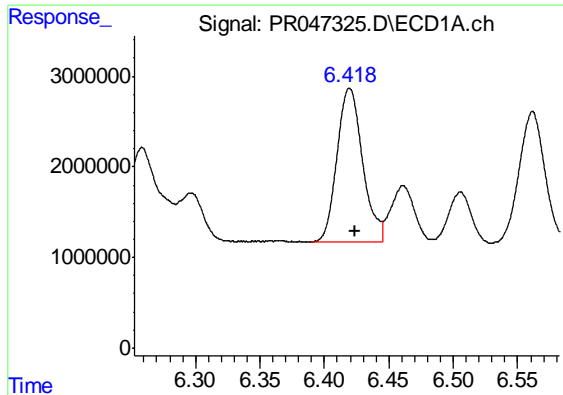
#6 AR-1016-4

R.T.: 6.126 min
 Delta R.T.: -0.004 min
 Response: 9250405
 Conc: 233.31 ng/ml



#6 AR-1016-4

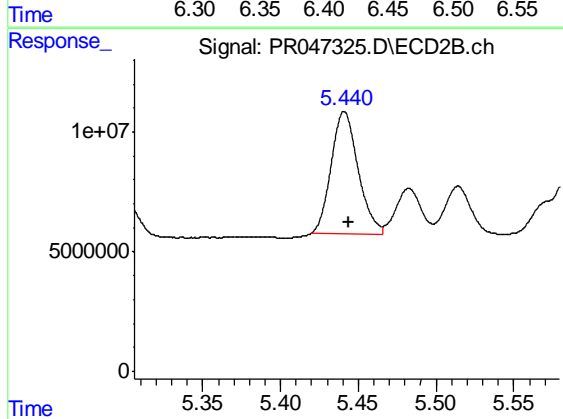
R.T.: 5.225 min
 Delta R.T.: -0.002 min
 Response: 41770174
 Conc: 483.29 ng/ml



#7 AR-1016-5

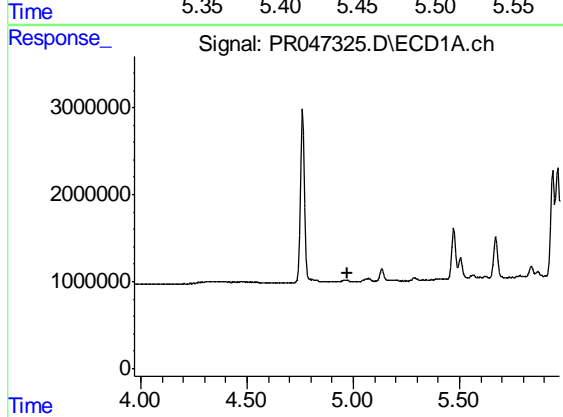
R.T.: 6.420 min
 Delta R.T.: -0.004 min
 Response: 23697423
 Conc: 580.93 ng/ml

Instrument :
 ECD_R
 ClientSampleId :
 AR1248338



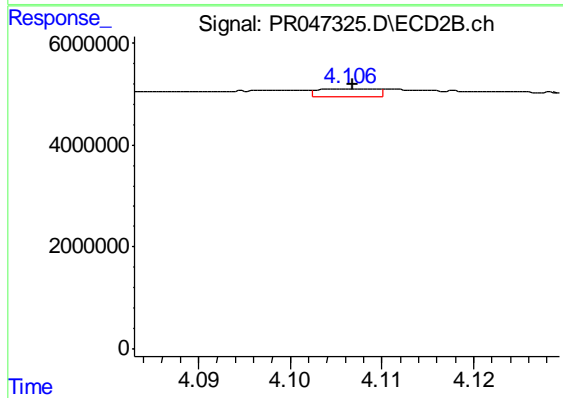
#7 AR-1016-5

R.T.: 5.441 min
 Delta R.T.: -0.003 min
 Response: 61606268
 Conc: 427.53 ng/ml



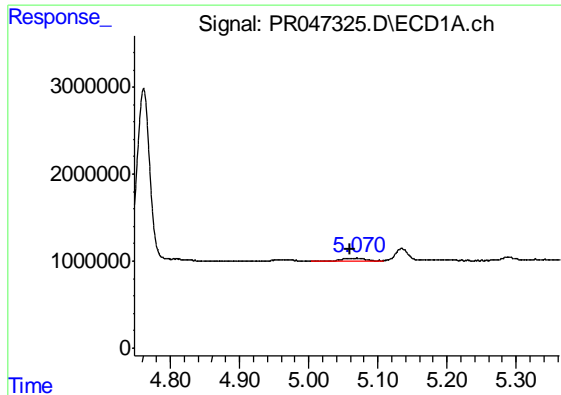
#8 AR-1221-1

R.T.: 0.000 min
 Exp R.T. : 4.970 min
 Response: 0
 Conc: N.D.



#8 AR-1221-1

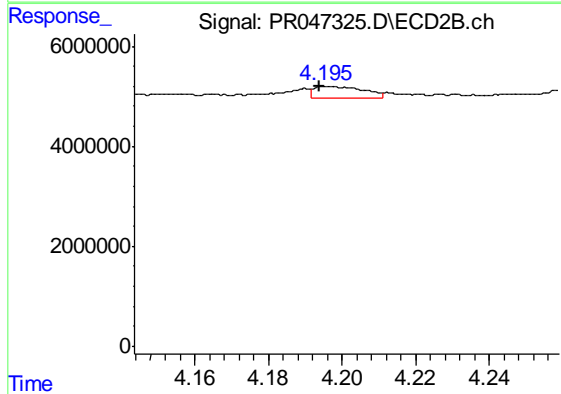
R.T.: 4.107 min
 Delta R.T.: 0.000 min
 Response: 680545
 Conc: 14.73 ng/ml



#9 AR-1221-2

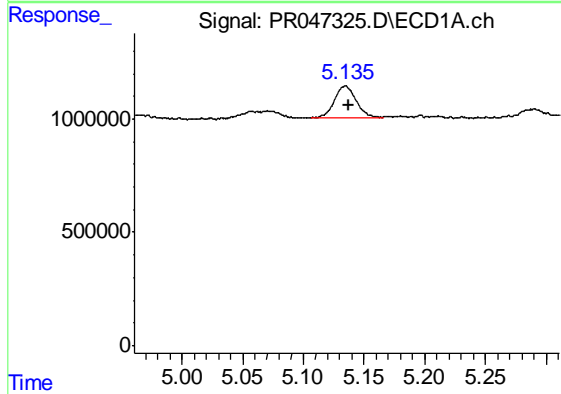
R.T.: 5.071 min
 Delta R.T.: 0.012 min
 Response: 792033
 Conc: 71.88 ng/ml

Instrument :
 ECD_R
 ClientSampleId :
 AR1248338



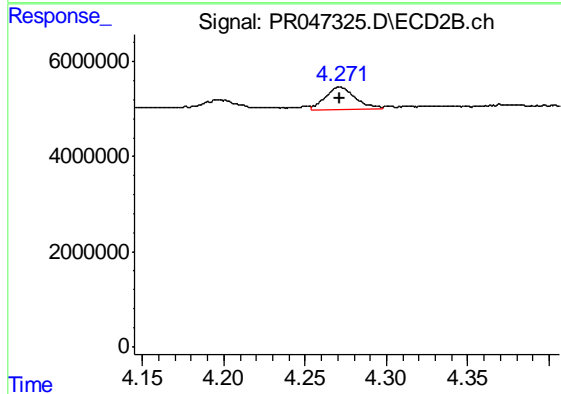
#9 AR-1221-2

R.T.: 4.195 min
 Delta R.T.: 0.001 min
 Response: 2097066
 Conc: 57.53 ng/ml



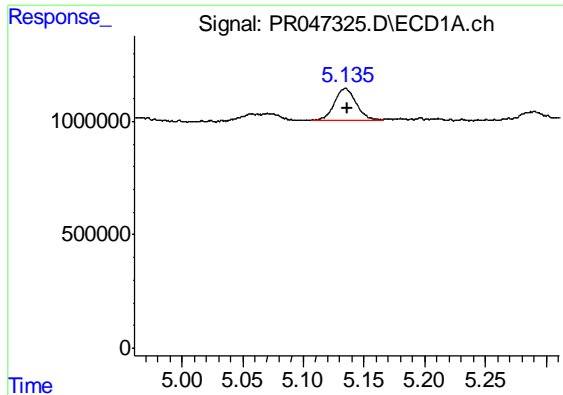
#10 AR-1221-3

R.T.: 5.135 min
 Delta R.T.: -0.003 min
 Response: 1752093
 Conc: 47.23 ng/ml



#10 AR-1221-3

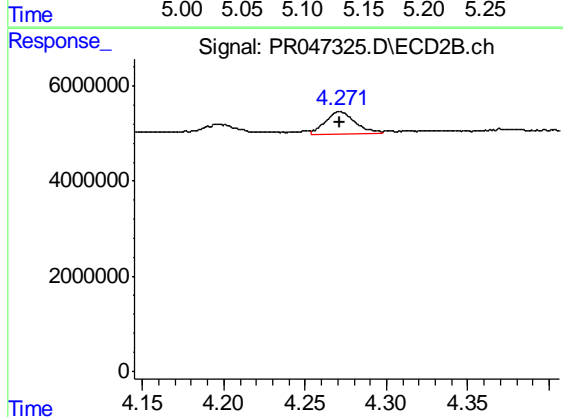
R.T.: 4.272 min
 Delta R.T.: 0.000 min
 Response: 6188399
 Conc: 50.28 ng/ml



#11 AR-1232-1

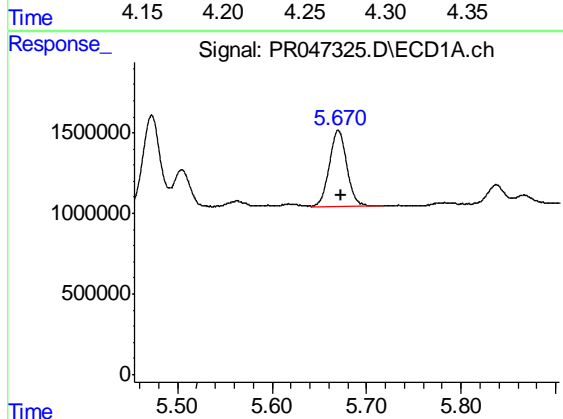
R.T.: 5.135 min
 Delta R.T.: -0.002 min
 Response: 1752093
 Conc: 58.47 ng/ml

Instrument :
 ECD_R
 ClientSampleId :
 AR1248338



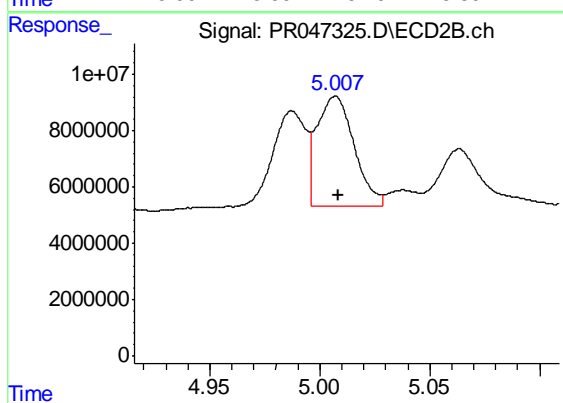
#11 AR-1232-1

R.T.: 4.272 min
 Delta R.T.: 0.000 min
 Response: 6188399
 Conc: 61.11 ng/ml



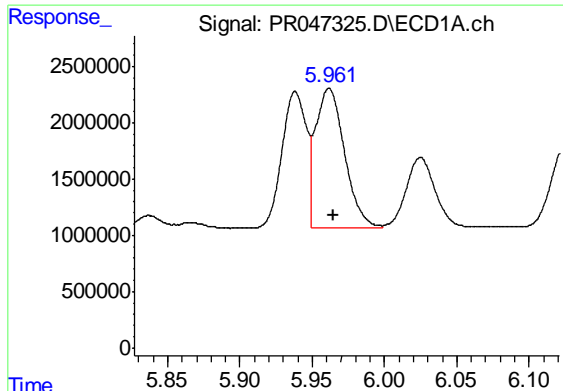
#12 AR-1232-2

R.T.: 5.670 min
 Delta R.T.: -0.003 min
 Response: 6147584
 Conc: 358.69 ng/ml



#12 AR-1232-2

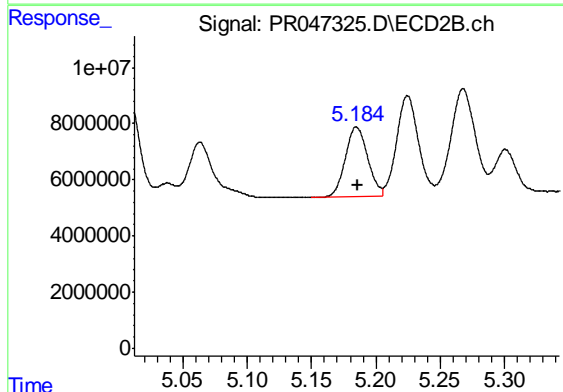
R.T.: 5.007 min
 Delta R.T.: -0.001 min
 Response: 45975861
 Conc: 405.72 ng/ml



#13 AR-1232-3

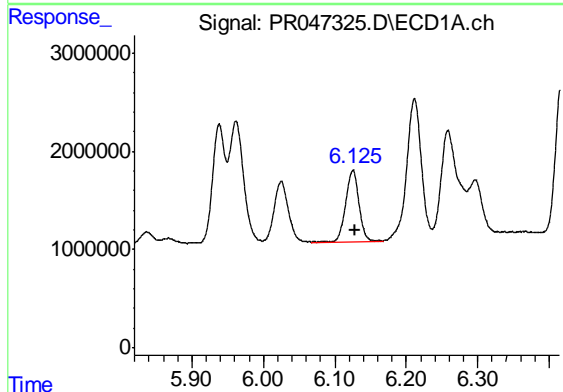
R.T.: 5.962 min
 Delta R.T.: -0.003 min
 Response: 17206088
 Conc: 507.54 ng/ml

Instrument :
 ECD_R
 ClientSampleId :
 AR1248338



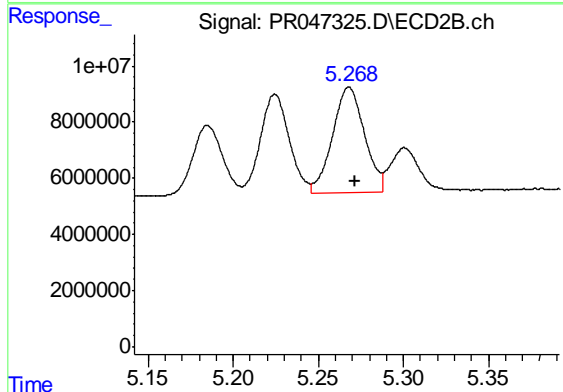
#13 AR-1232-3

R.T.: 5.185 min
 Delta R.T.: -0.001 min
 Response: 29707070
 Conc: 434.98 ng/ml



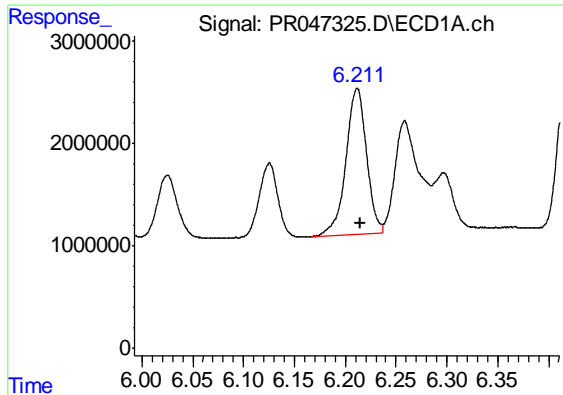
#14 AR-1232-4

R.T.: 6.126 min
 Delta R.T.: -0.002 min
 Response: 9250405
 Conc: 552.02 ng/ml



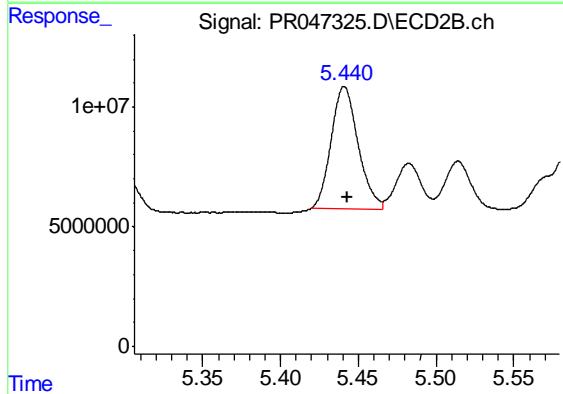
#14 AR-1232-4

R.T.: 5.268 min
 Delta R.T.: -0.004 min
 Response: 48637532
 Conc: 1101.52 ng/ml

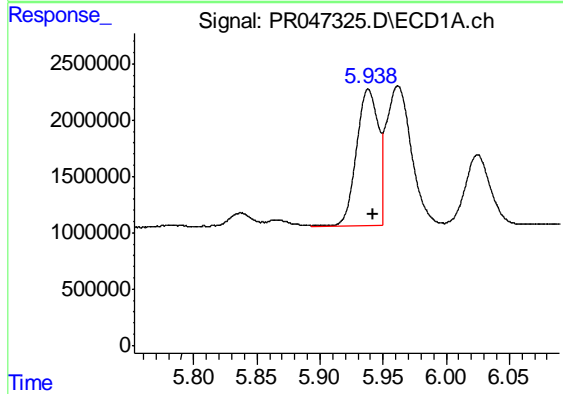


#15 AR-1232-5
 R.T.: 6.212 min
 Delta R.T.: -0.003 min
 Response: 20240006
 Conc: 1511.06 ng/ml

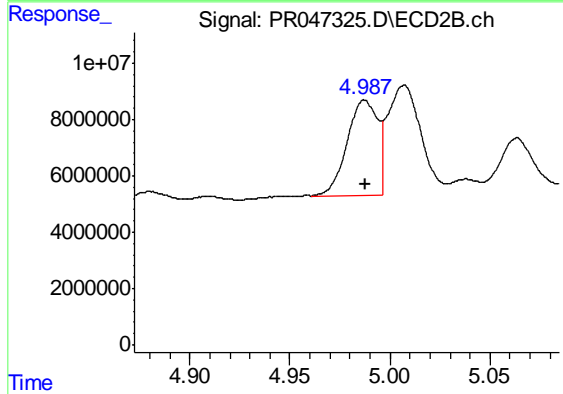
Instrument :
 ECD_R
 ClientSampleId :
 AR1248338



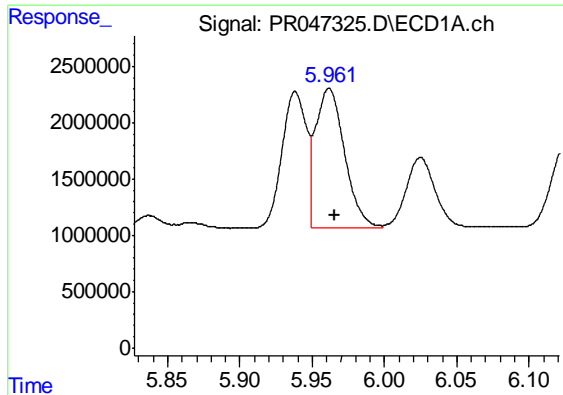
#15 AR-1232-5
 R.T.: 5.441 min
 Delta R.T.: -0.002 min
 Response: 61606268
 Conc: 1034.40 ng/ml



#16 AR-1242-1
 R.T.: 5.938 min
 Delta R.T.: -0.003 min
 Response: 14369142
 Conc: 314.29 ng/ml



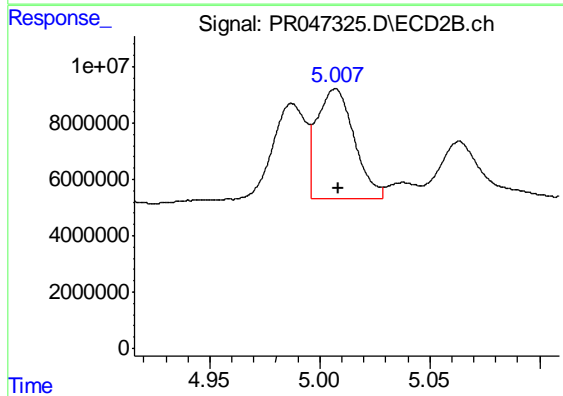
#16 AR-1242-1
 R.T.: 4.987 min
 Delta R.T.: 0.000 min
 Response: 36142664
 Conc: 287.88 ng/ml



#17 AR-1242-2

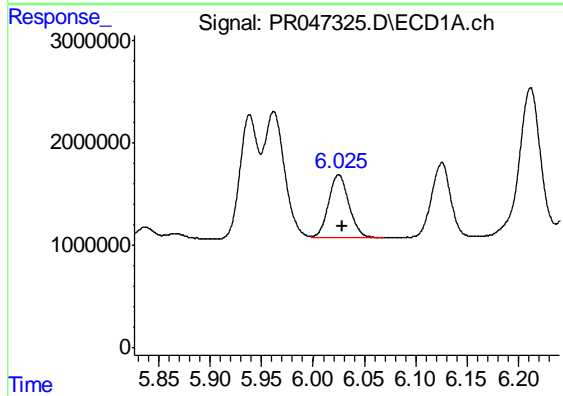
R.T.: 5.962 min
 Delta R.T.: -0.004 min
 Response: 17206088
 Conc: 269.82 ng/ml

Instrument :
 ECD_R
 ClientSampleId :
 AR1248338



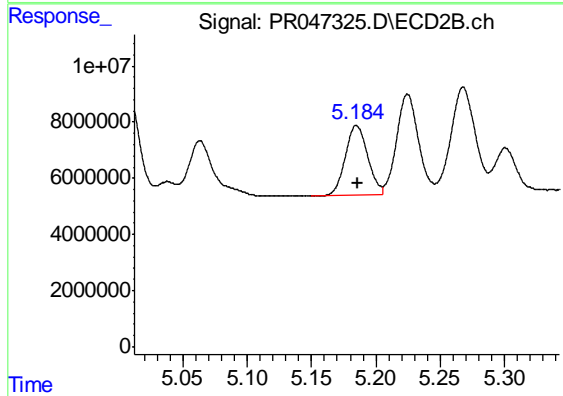
#17 AR-1242-2

R.T.: 5.007 min
 Delta R.T.: -0.001 min
 Response: 45975861
 Conc: 216.00 ng/ml



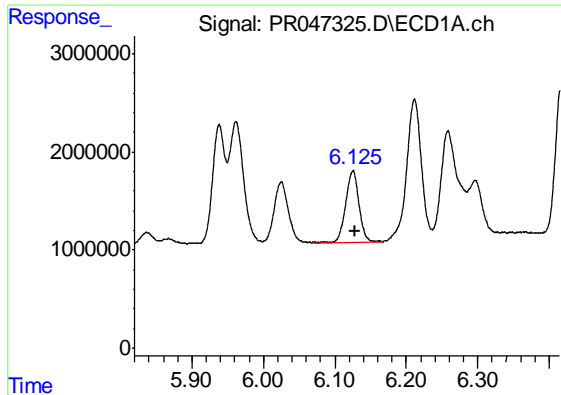
#18 AR-1242-3

R.T.: 6.025 min
 Delta R.T.: -0.004 min
 Response: 8552521
 Conc: 212.82 ng/ml



#18 AR-1242-3

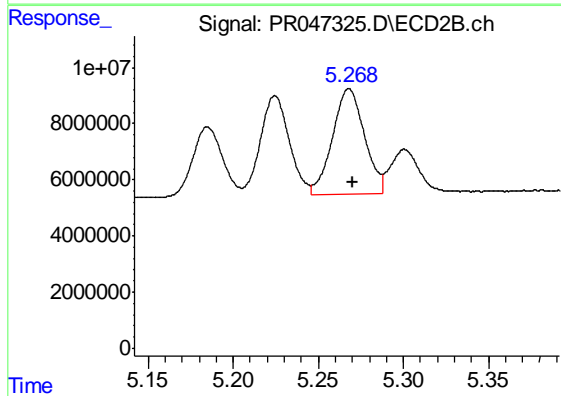
R.T.: 5.185 min
 Delta R.T.: 0.000 min
 Response: 29707070
 Conc: 233.88 ng/ml



#19 AR-1242-4

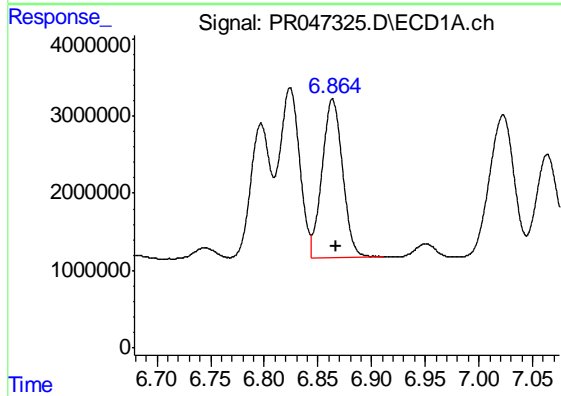
R.T.: 6.126 min
 Delta R.T.: -0.003 min
 Response: 9250405
 Conc: 277.39 ng/ml

Instrument :
 ECD_R
 ClientSampleId :
 AR1248338



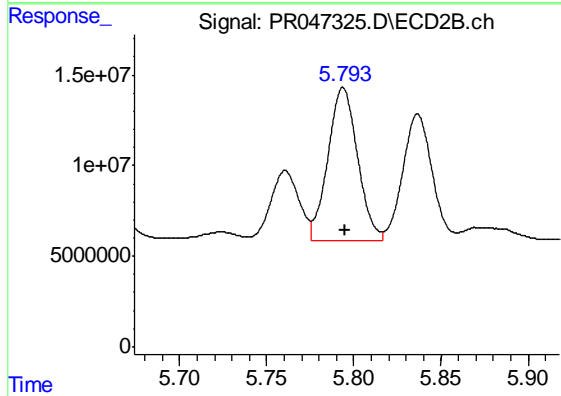
#19 AR-1242-4

R.T.: 5.268 min
 Delta R.T.: -0.002 min
 Response: 48637532
 Conc: 519.78 ng/ml



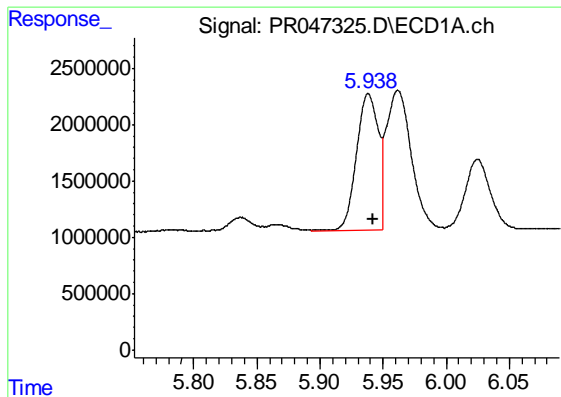
#20 AR-1242-5

R.T.: 6.864 min
 Delta R.T.: -0.004 min
 Response: 27242444
 Conc: 705.31 ng/ml



#20 AR-1242-5

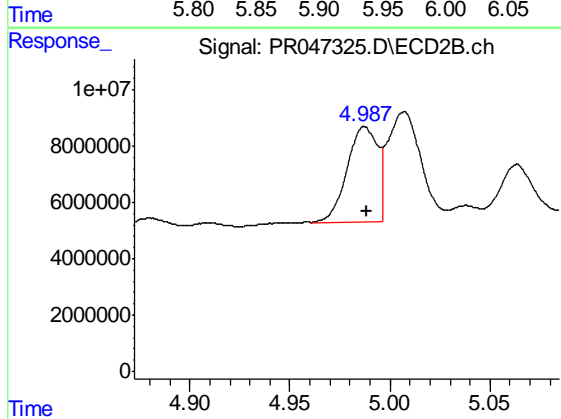
R.T.: 5.794 min
 Delta R.T.: -0.001 min
 Response: 100320662
 Conc: 649.41 ng/ml



#21 AR-1248-1

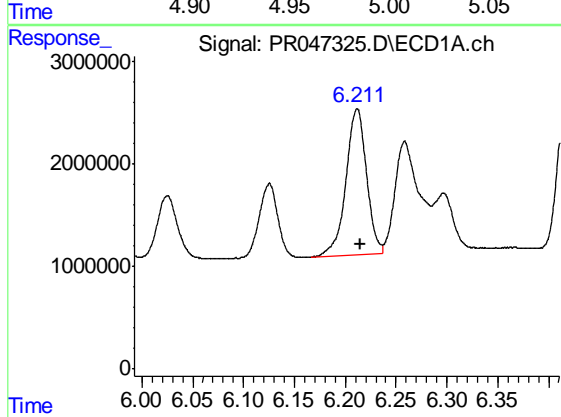
R.T.: 5.938 min
Delta R.T.: -0.003 min
Response: 14369142
Conc: 421.71 ng/ml

Instrument :
ECD_R
ClientSampleId :
AR1248338



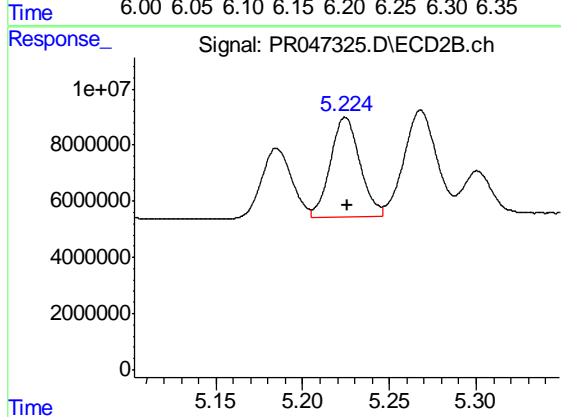
#21 AR-1248-1

R.T.: 4.987 min
Delta R.T.: -0.001 min
Response: 36142664
Conc: 376.40 ng/ml



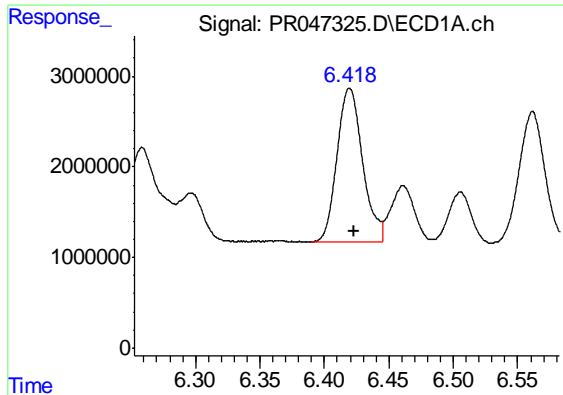
#22 AR-1248-2

R.T.: 6.212 min
Delta R.T.: -0.003 min
Response: 20240006
Conc: 409.24 ng/ml



#22 AR-1248-2

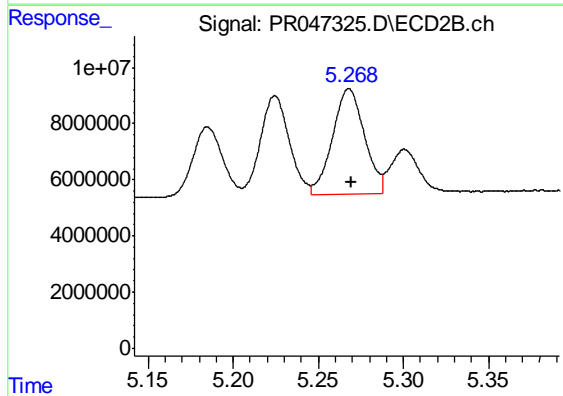
R.T.: 5.225 min
Delta R.T.: -0.002 min
Response: 41770174
Conc: 358.69 ng/ml



#23 AR-1248-3

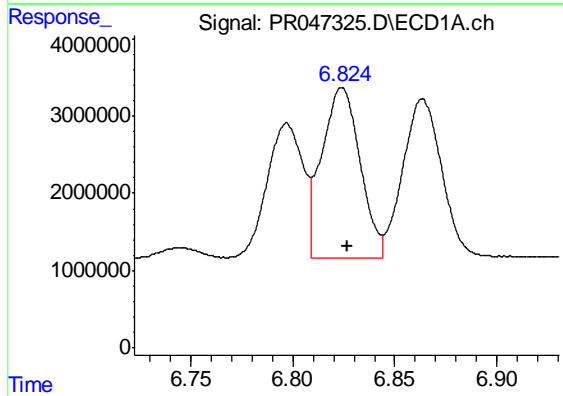
R.T.: 6.420 min
 Delta R.T.: -0.003 min
 Response: 23697423
 Conc: 436.31 ng/ml

Instrument :
 ECD_R
 ClientSampleId :
 AR1248338



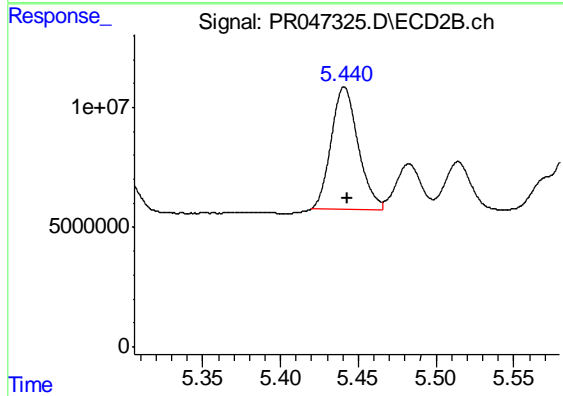
#23 AR-1248-3

R.T.: 5.268 min
 Delta R.T.: -0.001 min
 Response: 48637532
 Conc: 367.46 ng/ml



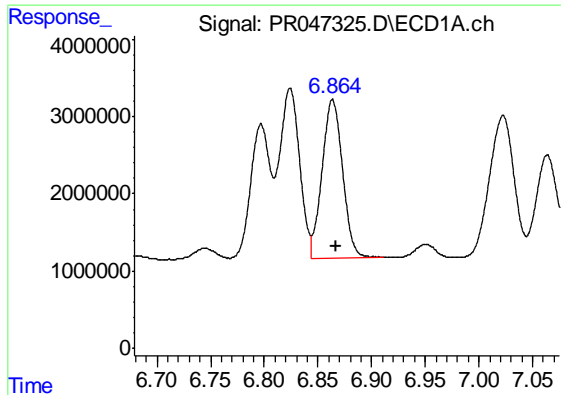
#24 AR-1248-4

R.T.: 6.824 min
 Delta R.T.: -0.003 min
 Response: 28698901
 Conc: 446.57 ng/ml



#24 AR-1248-4

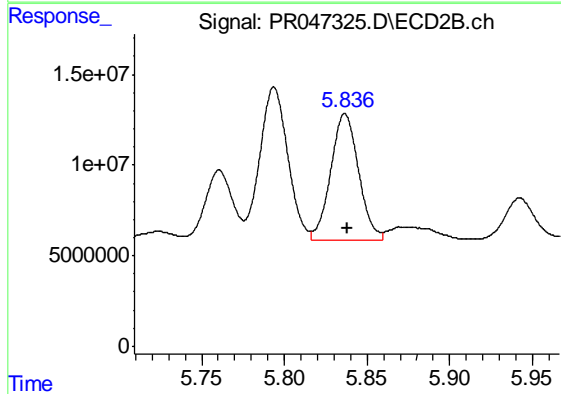
R.T.: 5.441 min
 Delta R.T.: -0.002 min
 Response: 61606268
 Conc: 337.66 ng/ml



#25 AR-1248-5

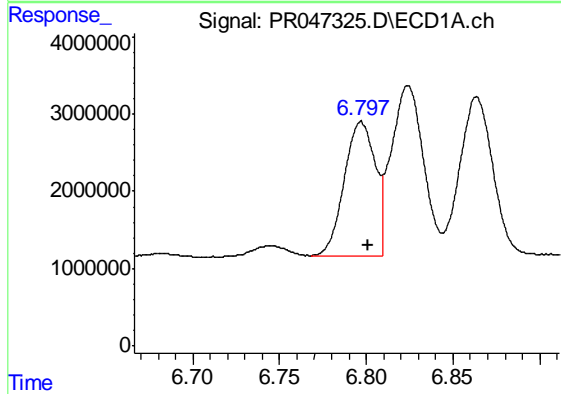
R.T.: 6.864 min
 Delta R.T.: -0.003 min
 Response: 27242444
 Conc: 447.46 ng/ml

Instrument :
 ECD_R
 ClientSampleId :
 AR1248338



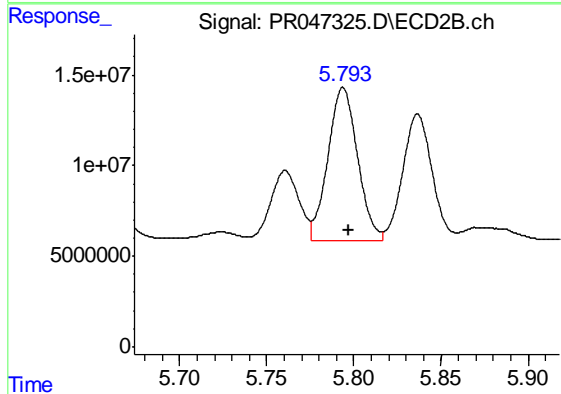
#25 AR-1248-5

R.T.: 5.837 min
 Delta R.T.: -0.001 min
 Response: 81877478
 Conc: 350.69 ng/ml



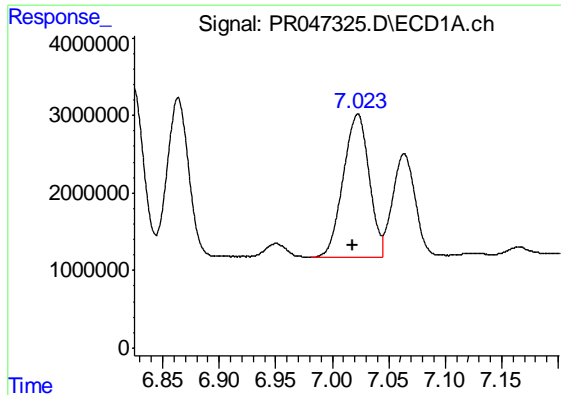
#26 AR-1254-1

R.T.: 6.797 min
 Delta R.T.: -0.004 min
 Response: 21643946
 Conc: 329.71 ng/ml



#26 AR-1254-1

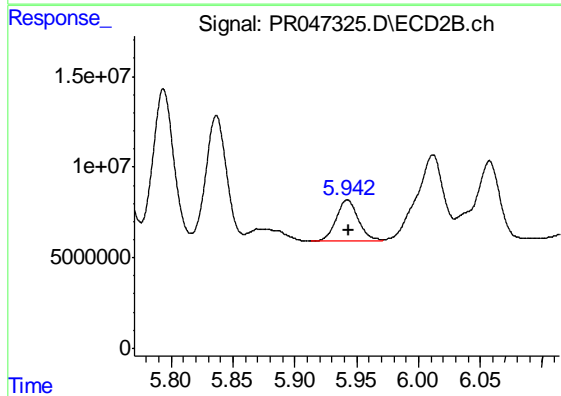
R.T.: 5.794 min
 Delta R.T.: -0.003 min
 Response: 100320662
 Conc: 352.72 ng/ml



#27 AR-1254-2

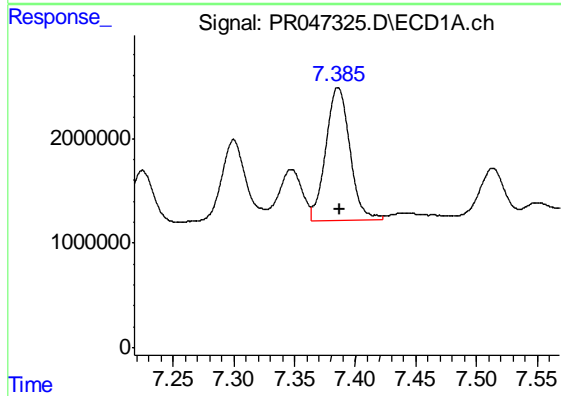
R.T.: 7.023 min
 Delta R.T.: 0.004 min
 Response: 29373308
 Conc: 287.89 ng/ml

Instrument :
 ECD_R
 ClientSampleId :
 AR1248338



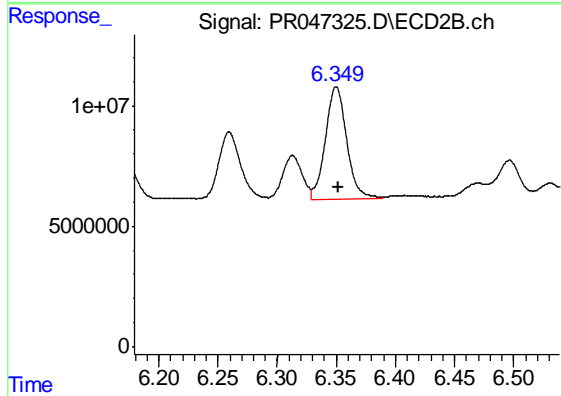
#27 AR-1254-2

R.T.: 5.942 min
 Delta R.T.: -0.002 min
 Response: 28306540
 Conc: 115.90 ng/ml



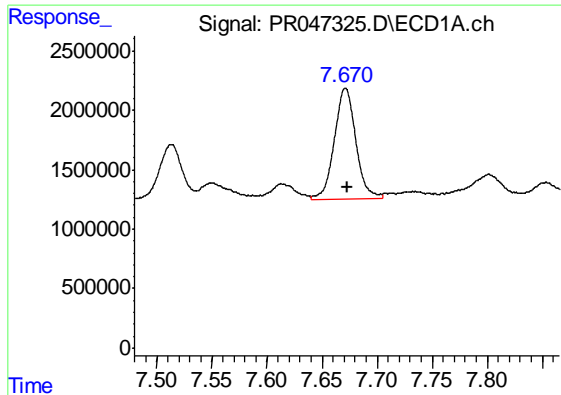
#28 AR-1254-3

R.T.: 7.386 min
 Delta R.T.: -0.002 min
 Response: 17443359
 Conc: 159.99 ng/ml



#28 AR-1254-3

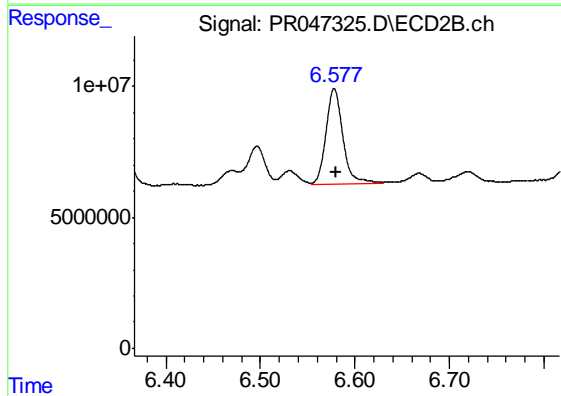
R.T.: 6.350 min
 Delta R.T.: -0.002 min
 Response: 58066436
 Conc: 113.09 ng/ml



#29 AR-1254-4

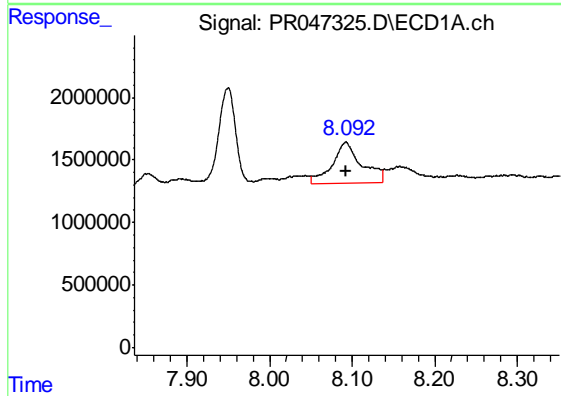
R.T.: 7.671 min
 Delta R.T.: -0.002 min
 Response: 12459672
 Conc: 147.04 ng/ml

Instrument :
 ECD_R
 ClientSampleId :
 AR1248338



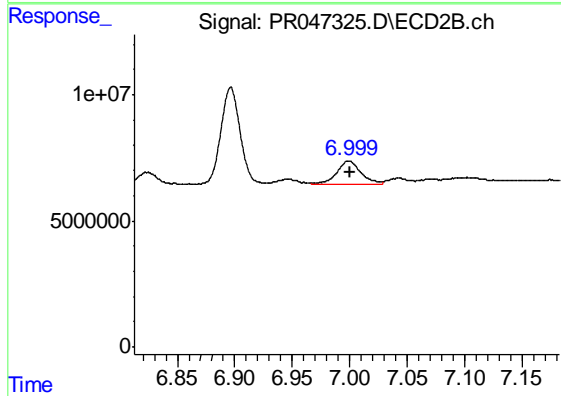
#29 AR-1254-4

R.T.: 6.578 min
 Delta R.T.: -0.002 min
 Response: 46185811
 Conc: 118.76 ng/ml



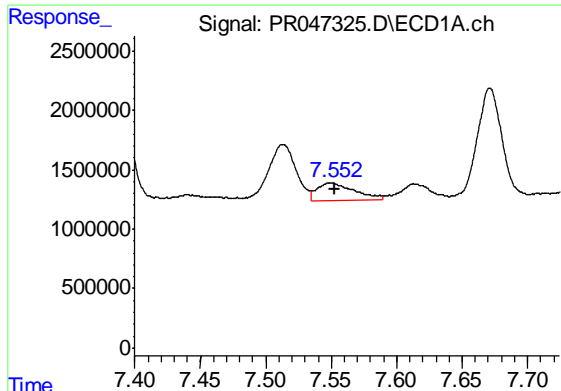
#30 AR-1254-5

R.T.: 8.092 min
 Delta R.T.: -0.001 min
 Response: 8010363
 Conc: 84.74 ng/ml



#30 AR-1254-5

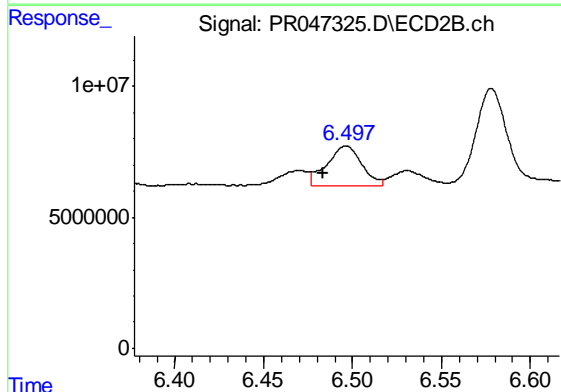
R.T.: 6.999 min
 Delta R.T.: 0.000 min
 Response: 13307120
 Conc: 24.17 ng/ml



#31 AR-1260-1

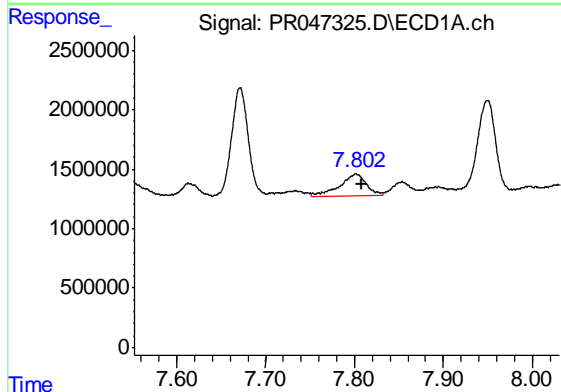
R.T.: 7.550 min
 Delta R.T.: -0.003 min
 Response: 2939200
 Conc: 36.07 ng/ml

Instrument :
 ECD_R
 ClientSampleId :
 AR1248338



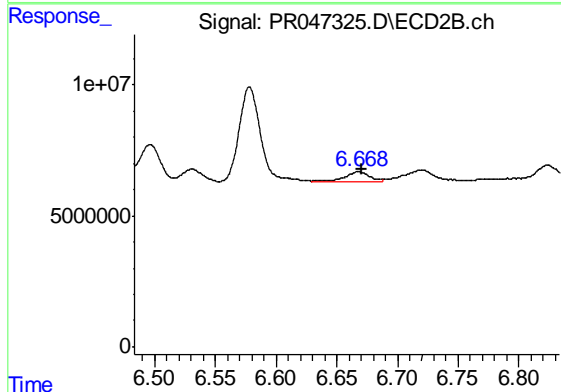
#31 AR-1260-1

R.T.: 6.496 min
 Delta R.T.: 0.013 min
 Response: 20630831
 Conc: 68.70 ng/ml



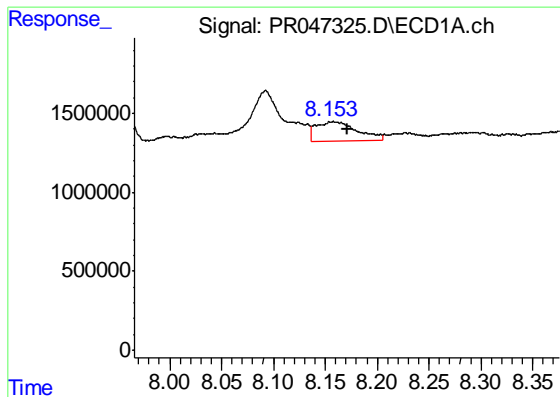
#32 AR-1260-2

R.T.: 7.802 min
 Delta R.T.: -0.007 min
 Response: 3877045
 Conc: 38.72 ng/ml



#32 AR-1260-2

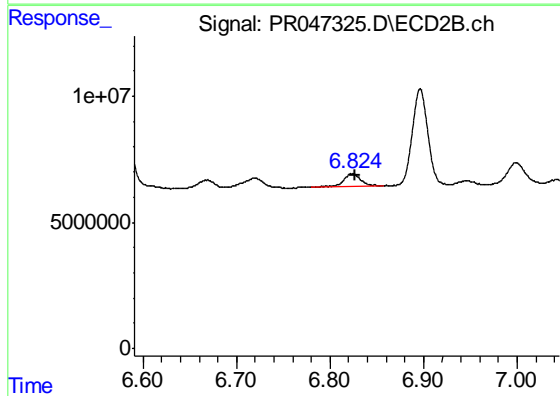
R.T.: 6.668 min
 Delta R.T.: -0.002 min
 Response: 5536490
 Conc: 12.36 ng/ml



#33 AR-1260-3

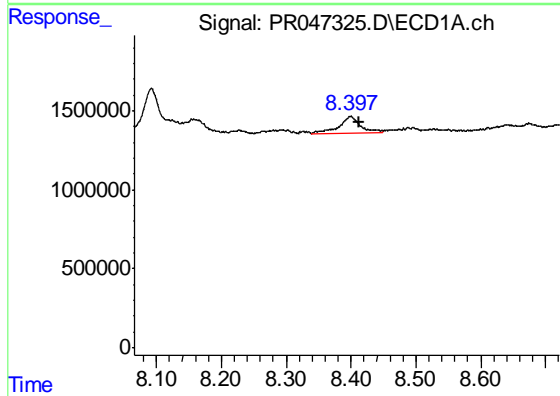
R.T.: 8.158 min
 Delta R.T.: -0.013 min
 Response: 3321741
 Conc: 42.19 ng/ml

Instrument :
 ECD_R
 ClientSampleId :
 AR1248338



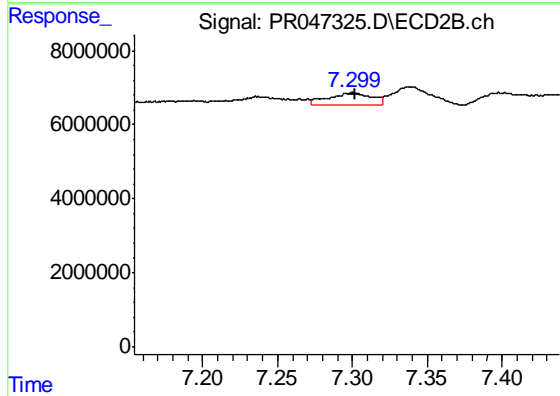
#33 AR-1260-3

R.T.: 6.824 min
 Delta R.T.: -0.003 min
 Response: 6436516
 Conc: 16.06 ng/ml



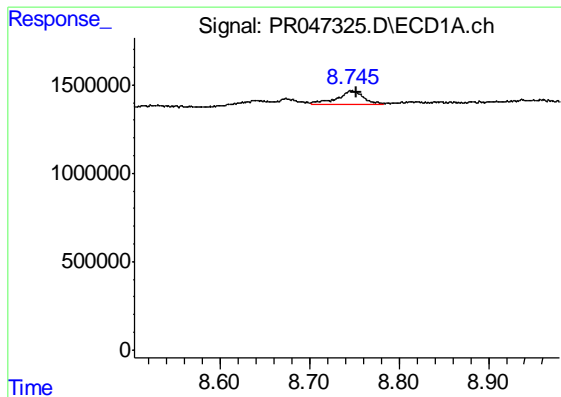
#34 AR-1260-4

R.T.: 8.399 min
 Delta R.T.: -0.013 min
 Response: 2480405
 Conc: 26.87 ng/ml



#34 AR-1260-4

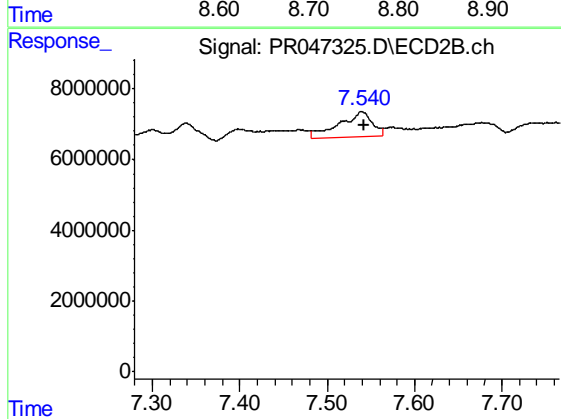
R.T.: 7.300 min
 Delta R.T.: -0.002 min
 Response: 6759648
 Conc: 16.87 ng/ml



#35 AR-1260-5

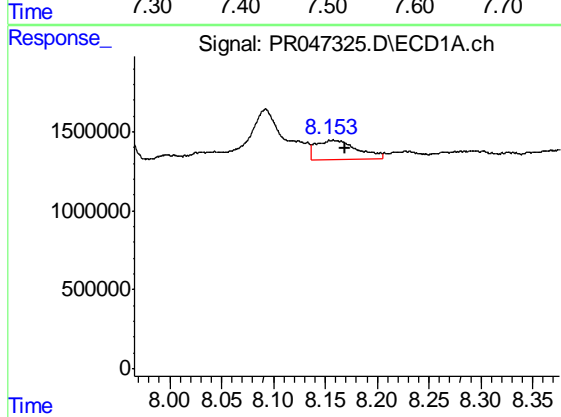
R.T.: 8.746 min
 Delta R.T.: -0.007 min
 Response: 1568008
 Conc: 8.48 ng/ml

Instrument :
 ECD_R
 ClientSampled :
 AR1248338



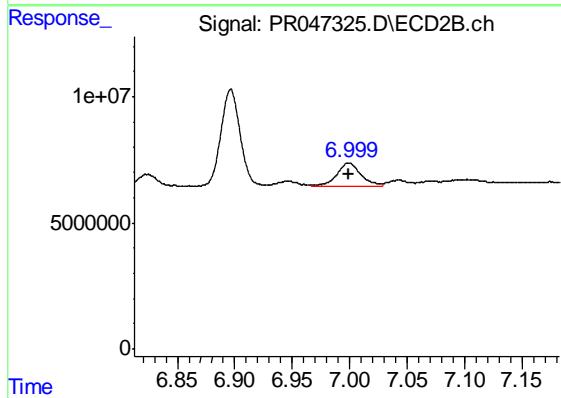
#35 AR-1260-5

R.T.: 7.540 min
 Delta R.T.: -0.004 min
 Response: 18200517
 Conc: 11.20 ng/ml



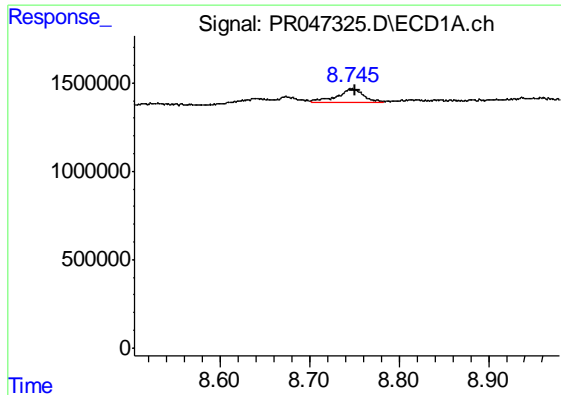
#36 AR-1262-1

R.T.: 8.158 min
 Delta R.T.: -0.011 min
 Response: 3321741
 Conc: 29.55 ng/ml



#36 AR-1262-1

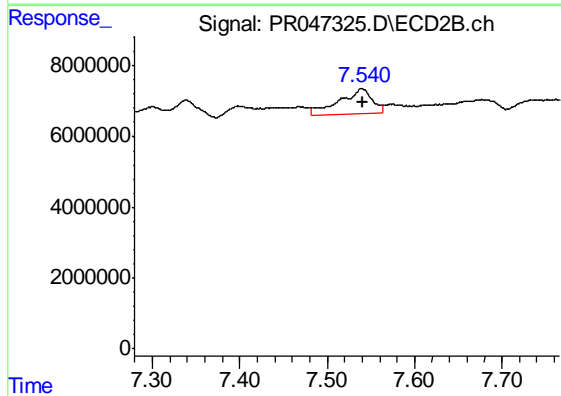
R.T.: 6.999 min
 Delta R.T.: 0.000 min
 Response: 13307120
 Conc: 43.68 ng/ml



#37 AR-1262-2

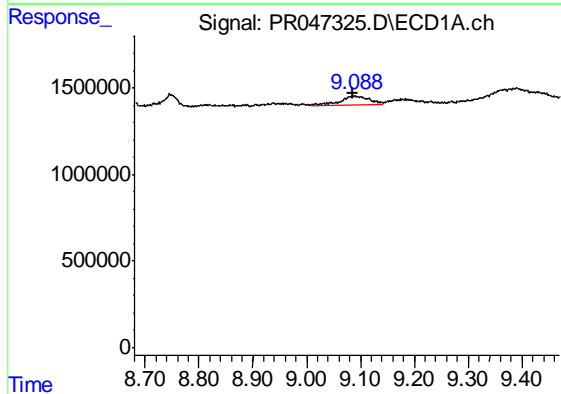
R.T.: 8.746 min
 Delta R.T.: -0.005 min
 Response: 1568008
 Conc: 7.58 ng/ml

Instrument :
 ECD_R
 ClientSampleId :
 AR1248338



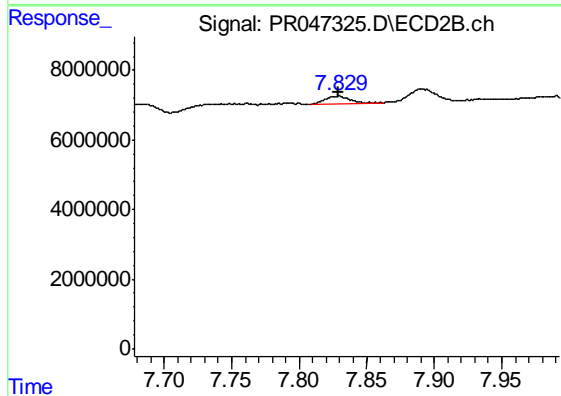
#37 AR-1262-2

R.T.: 7.540 min
 Delta R.T.: -0.002 min
 Response: 18200517
 Conc: 9.99 ng/ml



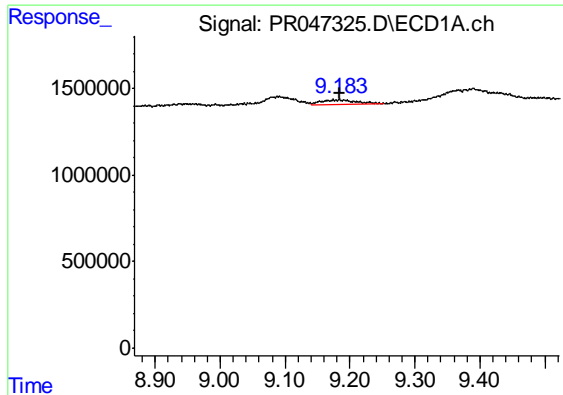
#38 AR-1262-3

R.T.: 9.089 min
 Delta R.T.: 0.003 min
 Response: 1738649
 Conc: 11.93 ng/ml



#38 AR-1262-3

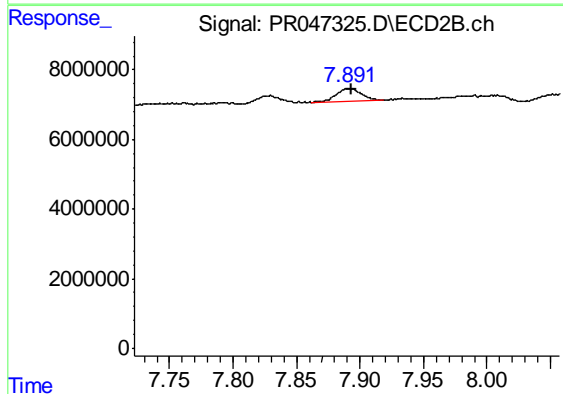
R.T.: 7.828 min
 Delta R.T.: -0.001 min
 Response: 2816583
 Conc: 3.75 ng/ml



#39 AR-1262-4

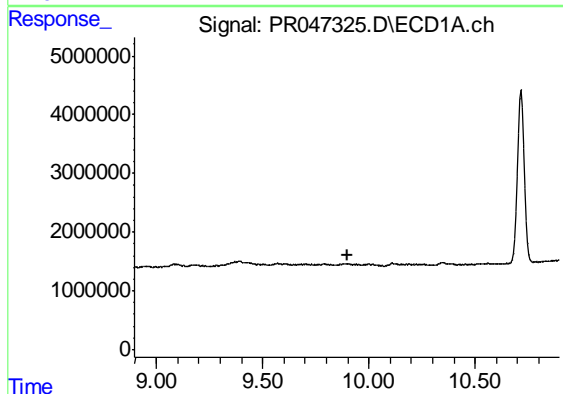
R.T.: 9.174 min
 Delta R.T.: -0.011 min
 Response: 961054
 Conc: 8.70 ng/ml

Instrument :
 ECD_R
 ClientSampleId :
 AR1248338



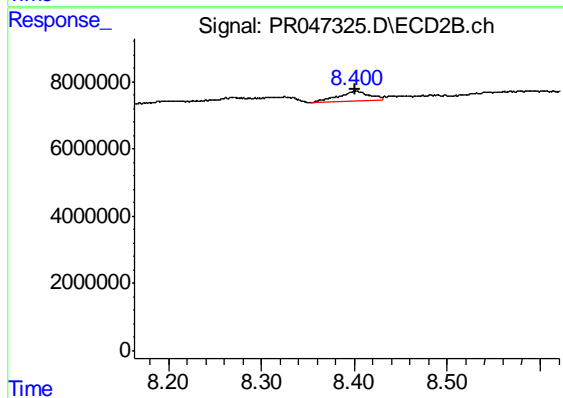
#39 AR-1262-4

R.T.: 7.891 min
 Delta R.T.: -0.002 min
 Response: 4823835
 Conc: 3.73 ng/ml



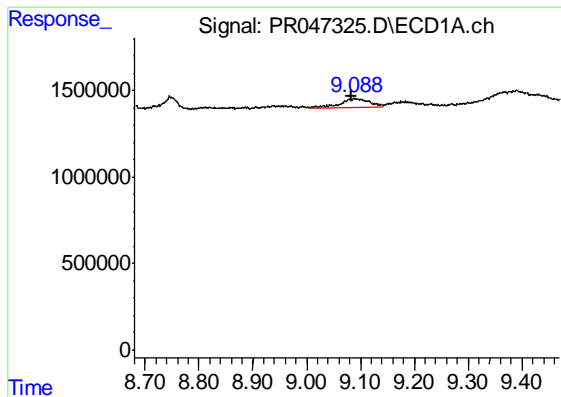
#40 AR-1262-5

R.T.: 0.000 min
 Exp R.T. : 9.897 min
 Response: 0
 Conc: N.D.



#40 AR-1262-5

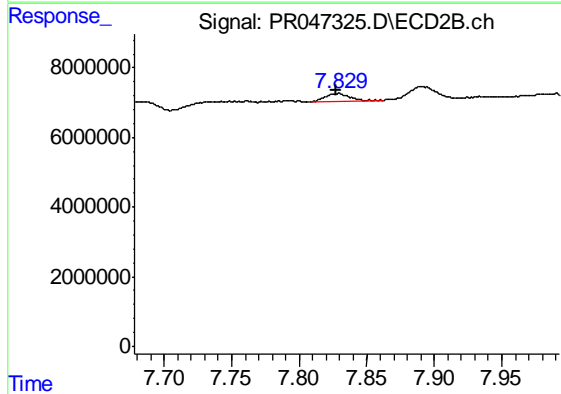
R.T.: 8.401 min
 Delta R.T.: 0.000 min
 Response: 6912409
 Conc: 9.64 ng/ml



#41 AR-1268-1

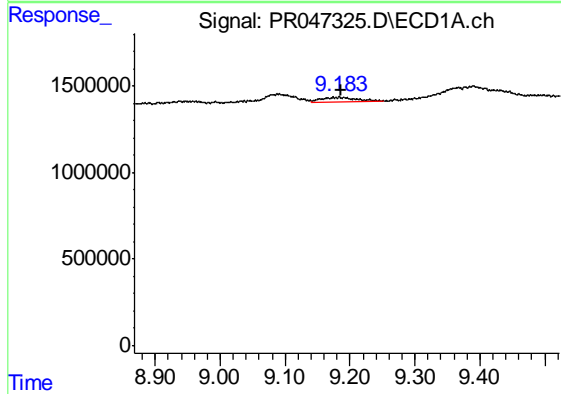
R.T.: 9.089 min
 Delta R.T.: 0.006 min
 Response: 1738649
 Conc: 6.93 ng/ml

Instrument :
 ECD_R
 ClientSampleId :
 AR1248338



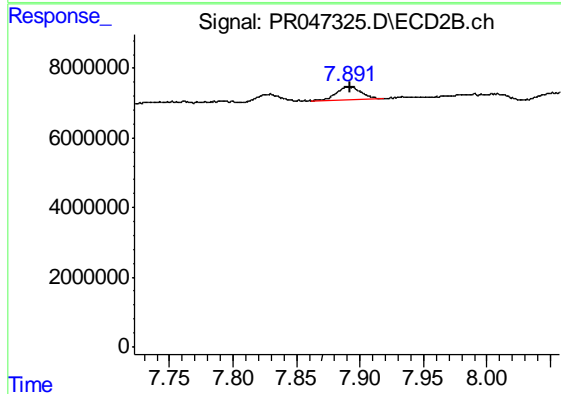
#41 AR-1268-1

R.T.: 7.828 min
 Delta R.T.: 0.001 min
 Response: 2816583
 Conc: 1.21 ng/ml



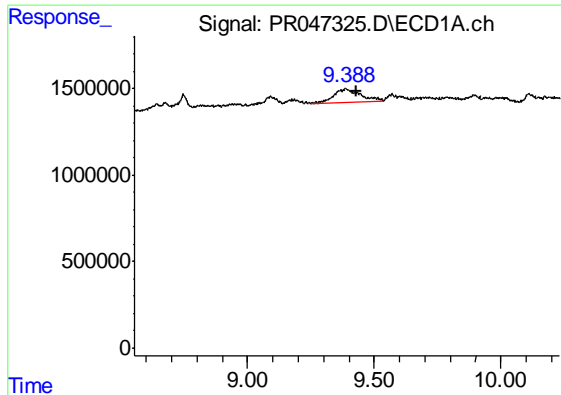
#42 AR-1268-2

R.T.: 9.174 min
 Delta R.T.: -0.012 min
 Response: 961054
 Conc: 4.15 ng/ml



#42 AR-1268-2

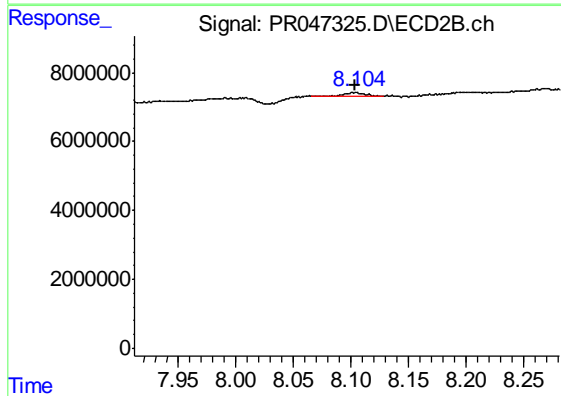
R.T.: 7.891 min
 Delta R.T.: 0.000 min
 Response: 4823835
 Conc: 2.20 ng/ml



#43 AR-1268-3

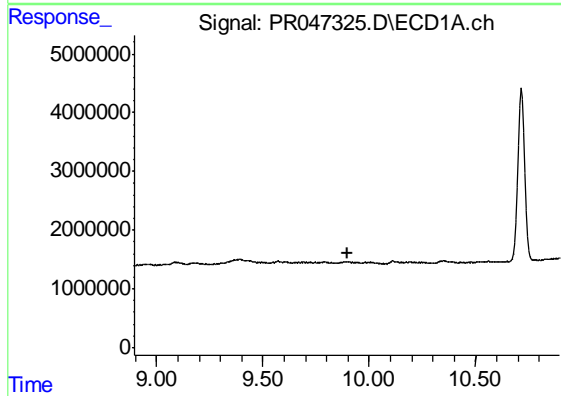
R.T.: 9.389 min
 Delta R.T.: -0.044 min
 Response: 5862814
 Conc: 29.86 ng/ml

Instrument :
 ECD_R
 ClientSampleId :
 AR1248338



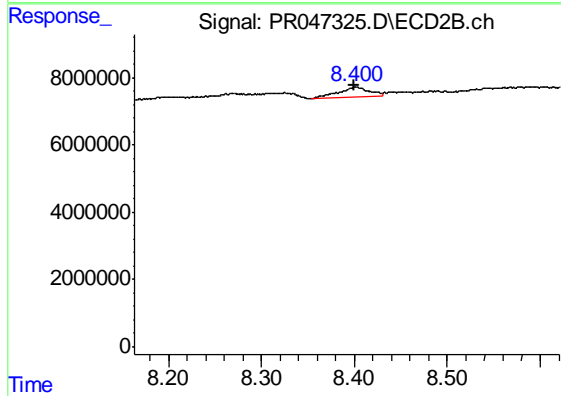
#43 AR-1268-3

R.T.: 8.104 min
 Delta R.T.: 0.000 min
 Response: 1372614
 Conc: 0.71 ng/ml



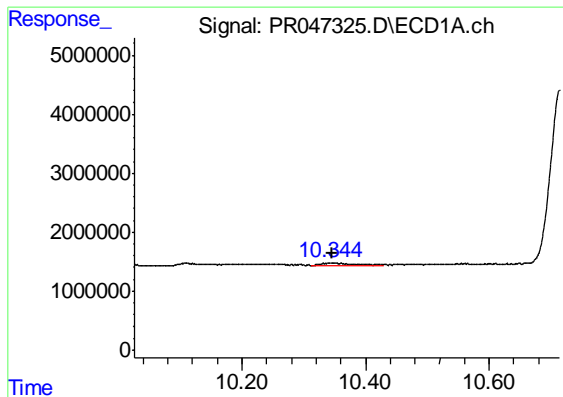
#44 AR-1268-4

R.T.: 0.000 min
 Exp R.T. : 9.895 min
 Response: 0
 Conc: N.D.



#44 AR-1268-4

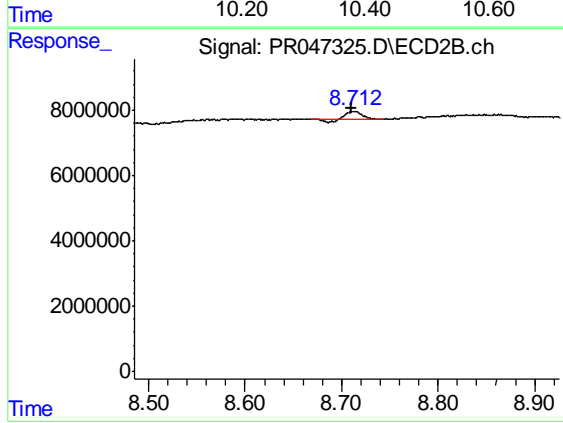
R.T.: 8.401 min
 Delta R.T.: 0.002 min
 Response: 6912409
 Conc: 8.31 ng/ml



#45 AR-1268-5

R.T.: 10.344 min
Delta R.T.: -0.001 min
Response: 1299532
Conc: 1.97 ng/ml

Instrument :
ECD_R
ClientSampleId :
AR1248338



#45 AR-1268-5

R.T.: 8.712 min
Delta R.T.: 0.001 min
Response: 2449802
Conc: 0.42 ng/ml