

Data Path : Z:\pestpcbsrv\HPCHEM1\ECD_R\Data\PR091823\
 Data File : PR063409.D
 Signal(s) : Signal #1: ECD1A.ch Signal #2: ECD2B.ch
 Acq On : 19 Sep 2023 02:05
 Operator : YP\AJ
 Sample : 04429-07
 Misc :
 ALS Vial : 48 Sample Multiplier: 1

Instrument :
 ECD_R
 ClientSampleId :

Integration File signal 1: autoint1.e
 Integration File signal 2: autoint2.e
 Quant Time: Sep 19 05:42:04 2023
 Quant Method : Z:\pestpcbsrv\HPCHEM1\ECD_R\Method\PR091223CLP.M
 Quant Title : GC EXTRACTABLES
 QLast Update : Wed Sep 13 07:34:49 2023
 Response via : Initial Calibration
 Integrator: ChemStation

Volume Inj. : 1 µl
 Signal #1 Phase : ZB MR1 Signal #2 Phase: ZB MR2
 Signal #1 Info : 30Mx0.32mmx 0.5µm Signal #2 Info : 30M x 0.32mm x 0.25µm

Compound	RT#1	RT#2	Resp#1	Resp#2	ng/ml	ng/ml

System Monitoring Compounds						
1) SA Tetrachlo...	3.668	2.896	-106572327	173.6E6	N.D.	50.776
2) SA Decachlor...	9.666	8.175	18767596	11817415	5.068	3.954
Target Compounds						
3) L1 AR-1016-1	4.886	3.998	106.4E6	87440800	544.497	776.771 #
4) L1 AR-1016-2	4.959	4.049	13352958	71902518	47.394	423.225 #
5) L1 AR-1016-3	4.999	4.201	2978408	15673724	17.727	180.317 #
6) L1 AR-1016-4	5.081	4.281	5245001	4482506	38.215	66.280 #
7) L1 AR-1016-5	5.400	4.473	8308945	3008420	62.263	34.739 #
8) L2 AR-1221-1	3.891	3.124	17823389	1804018	245.559	48.719 #
9) L2 AR-1221-2	3.987	3.181	20416501	14460528	434.969	560.784 #
10) L2 AR-1221-3	4.074	3.283	21660627	21193174	134.246	221.190 #
11) L3 AR-1232-1	4.074	3.283	21660627	21193174	159.689	265.940 #
12) L3 AR-1232-2	4.587f	4.049	51786472	71902518	817.771	960.898
13) L3 AR-1232-3	4.959	4.201	13352958	15673724	106.136	416.299 #
14) L3 AR-1232-4	5.081	4.303	5245001	2832733	86.568	89.280
15) L3 AR-1232-5	5.206	4.473	10346452	3008420	239.190	83.434 #
16) L4 AR-1242-1	4.886	3.998	106.4E6	87440800	638.068	915.935 #
17) L4 AR-1242-2	4.959	4.049	13352958	71902518	55.961	503.533 #
18) L4 AR-1242-3	4.999	4.201	2978408	15673724	20.977	213.968 #
19) L4 AR-1242-4	5.081	4.303	5245001	2832733	44.751	41.416
20) L4 AR-1242-5	5.899	4.850	9908162	11072453	85.444	126.577 #
21) L5 AR-1248-1	4.886	3.998	106.4E6	87440800	822.694	1170.664 #
22) L5 AR-1248-2	5.206	4.281	10346452	4482506	61.013	41.991 #
23) L5 AR-1248-3	5.400	4.303	8308945	2832733	41.172	26.635 #
24) L5 AR-1248-4	5.860	4.473	6856335	3008420	31.469	23.157 #
25) L5 AR-1248-5	5.899	4.891	9908162	5973749	47.089	46.473
26) L6 AR-1254-1	5.826	4.850	3976817	11072453	18.124	56.081 #
27) L6 AR-1254-2	6.064	5.008	7210069	8539883	21.758	50.523 #
28) L6 AR-1254-3	6.461	5.431	8306249	10539516	24.656	38.824 #
29) L6 AR-1254-4	6.773	5.681	4462268	14038718	19.254	83.681 #
30) L6 AR-1254-5	7.214	6.139	8628058	4901871	35.330	21.079 #
31) L7 AR-1260-1	6.642	5.573	2705702	11771254	11.262	66.351 #
32) L7 AR-1260-2	6.926	5.777	13180477	13776078	48.051	64.716 #
33) L7 AR-1260-3	7.320	5.957	5282234	8728445	27.624	43.822 #
34) L7 AR-1260-4	7.530f	6.434	6834425	3225536	31.256	19.698 #
35) L7 AR-1260-5	7.907	6.733	4280007	17755258	9.890	44.854 #
36) L8 AR-1262-1	7.320	6.161	5282234	7053906	17.338	27.894 #
37) L8 AR-1262-2	7.907	6.733	4280007	17755258	8.349	38.713 #
38) L8 AR-1262-3	8.252	7.035	3256921	1006106	9.752	5.654 #
39) L8 AR-1262-4	8.349f	7.105	1809524	6402047	7.270	19.032 #
40) L8 AR-1262-5	8.954	7.627	372279	1939505	2.085	12.854 #
41) L9 AR-1268-1	8.252	7.035	3256921	1006106	5.425	1.864 #

Data Path : Z:\pestpcbsrv\HPCHEM1\ECD_R\Data\PR091823\
 Data File : PR063409.D
 Signal(s) : Signal #1: ECD1A.ch Signal #2: ECD2B.ch
 Acq On : 19 Sep 2023 02:05
 Operator : YP\AJ
 Sample : 04429-07
 Misc :
 ALS Vial : 48 Sample Multiplier: 1

Instrument :
 ECD_R
 ClientSampleId :

Integration File signal 1: autoint1.e
 Integration File signal 2: autoint2.e
 Quant Time: Sep 19 05:42:04 2023
 Quant Method : Z:\pestpcbsrv\HPCHEM1\ECD_R\Method\PR091223CLP.M
 Quant Title : GC EXTRACTABLES
 QLast Update : Wed Sep 13 07:34:49 2023
 Response via : Initial Calibration
 Integrator: ChemStation

Volume Inj. : 1 µl
 Signal #1 Phase : ZB MR1 Signal #2 Phase: ZB MR2
 Signal #1 Info : 30Mx0.32mmx 0.5µm Signal #2 Info : 30M x 0.32mm x 0.25µm

	Compound	RT#1	RT#2	Resp#1	Resp#2	ng/ml	ng/ml
42)	L9 AR-1268-2	8.349f	7.105	1809524	6402047	3.330	13.045 #
43)	L9 AR-1268-3	8.570	7.313	343949	231848	0.734	0.558
44)	L9 AR-1268-4	8.954	7.627	372279	1939505	1.860	11.446 #
45)	L9 AR-1268-5	9.377	7.928	383745	697197	0.250	0.519 #

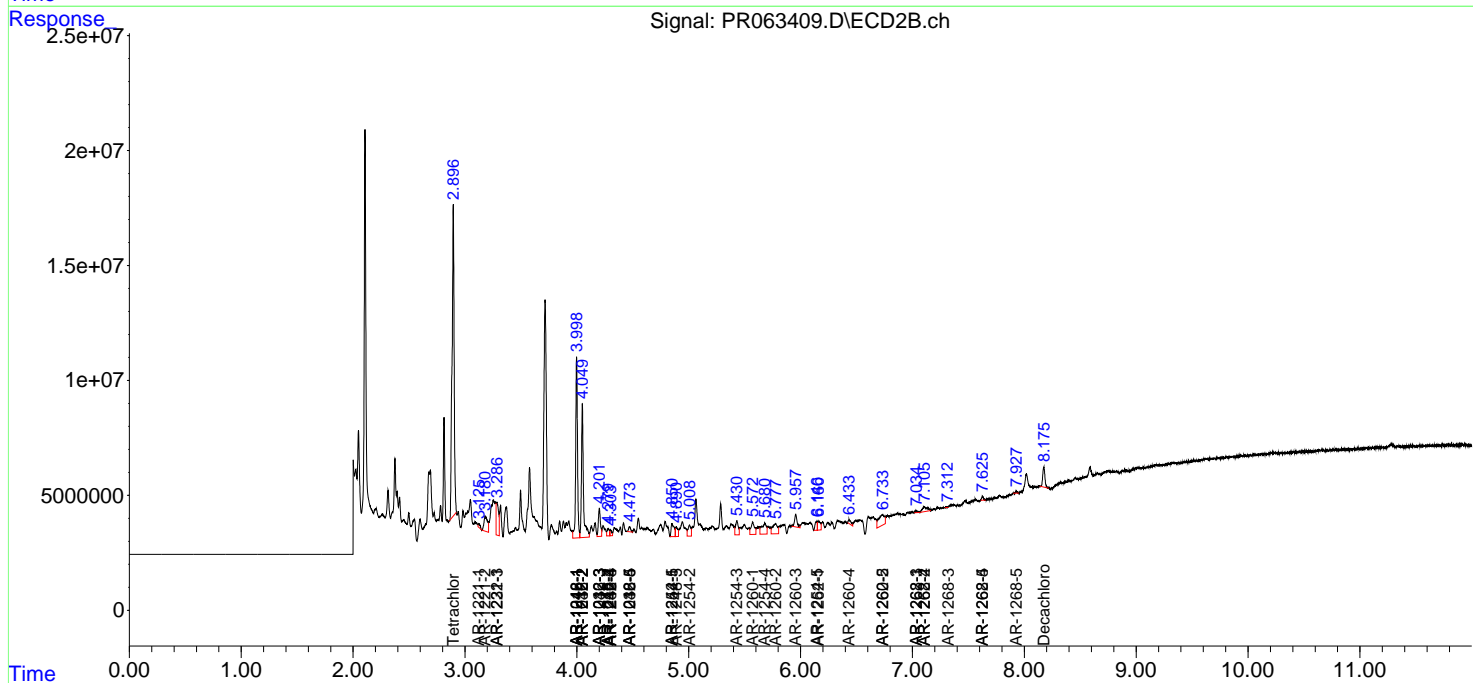
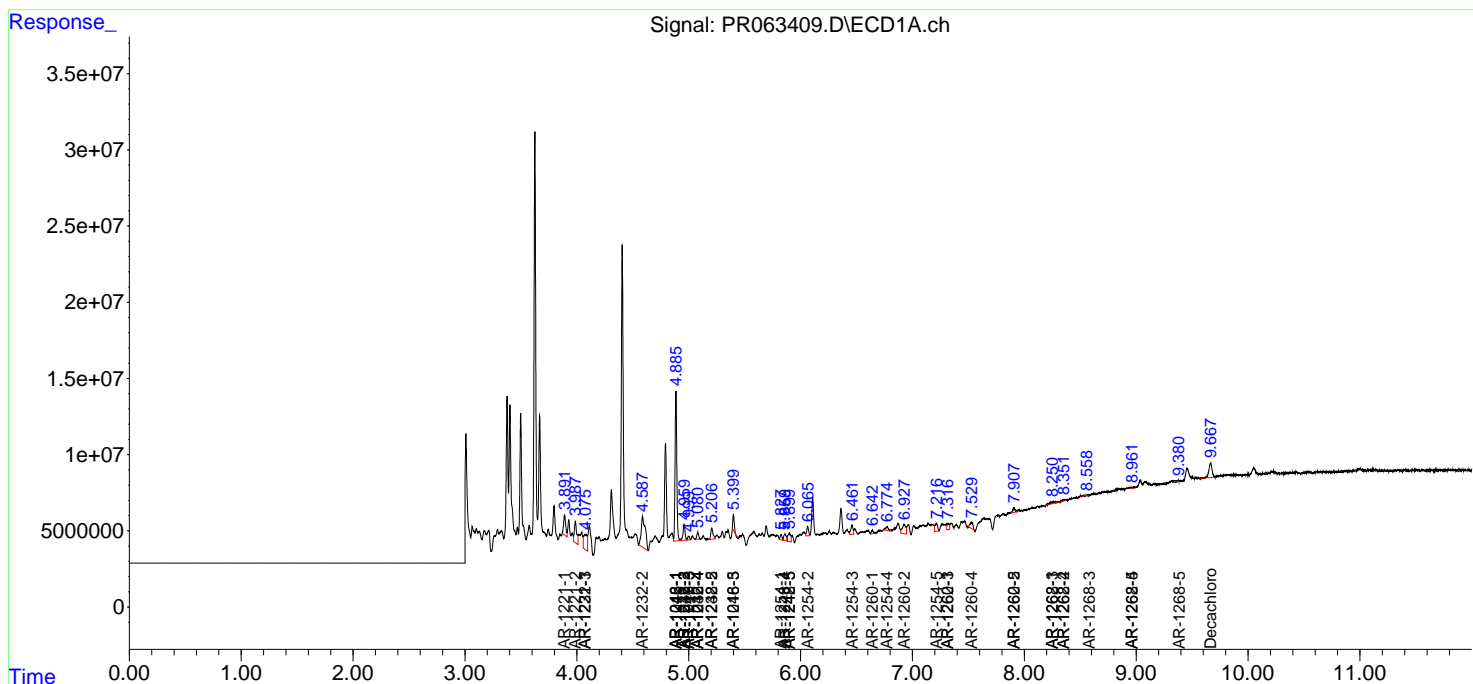
(f)=RT Delta > 1/2 Window (#)=Amounts differ by > 25% (m)=manual int.

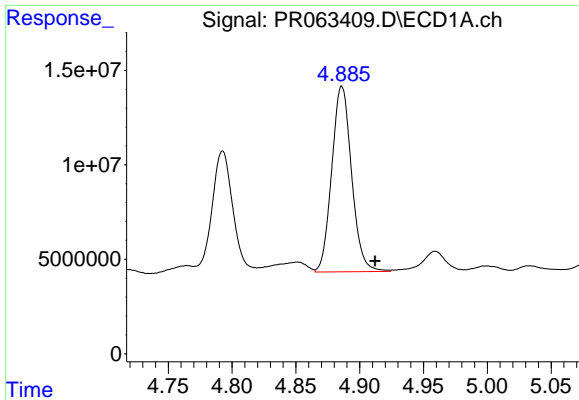
Data Path : Z:\pestpcbsrv\HPCHEM1\ECD_R\Data\PR091823\
 Data File : PR063409.D
 Signal(s) : Signal #1: ECD1A.ch Signal #2: ECD2B.ch
 Acq On : 19 Sep 2023 02:05
 Operator : YP\AJ
 Sample : 04429-07
 Misc :
 ALS Vial : 48 Sample Multiplier: 1

Instrument :
 ECD_R
 ClientSampleId :

Integration File signal 1: autoint1.e
 Integration File signal 2: autoint2.e
 Quant Time: Sep 19 05:42:04 2023
 Quant Method : Z:\pestpcbsrv\HPCHEM1\ECD_R\Method\PR091223CLP.M
 Quant Title : GC EXTRACTABLES
 QLast Update : Wed Sep 13 07:34:49 2023
 Response via : Initial Calibration
 Integrator: ChemStation

Volume Inj. : 1 µl
 Signal #1 Phase : ZB MR1 Signal #2 Phase: ZB MR2
 Signal #1 Info : 30Mx0.32mmx 0.5µm Signal #2 Info : 30M x 0.32mm x 0.25µm

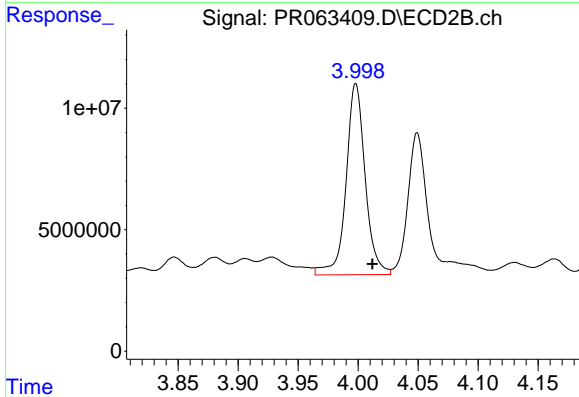




#3 AR-1016-1

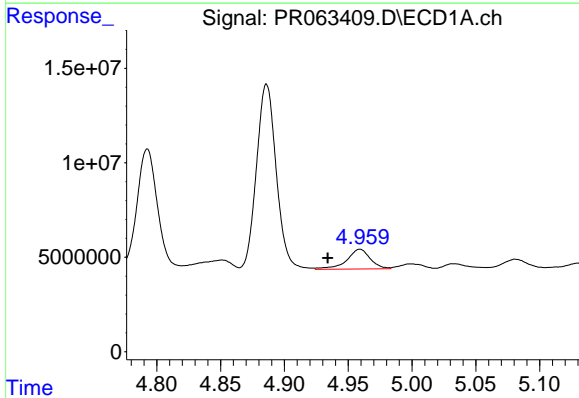
R.T.: 4.886 min
 Delta R.T.: -0.026 min
 Response: 106374688
 Conc: 544.50 ng/ml

Instrument :
 ECD_R
 ClientSampleId :



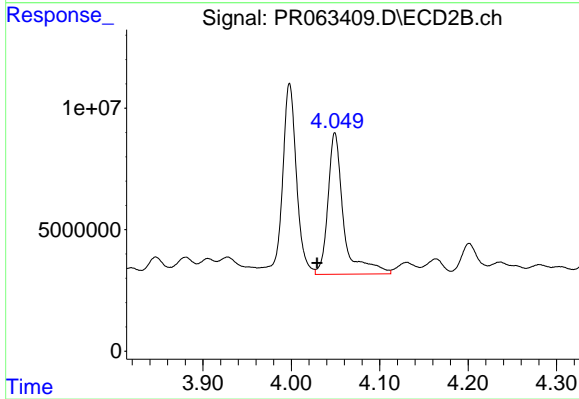
#3 AR-1016-1

R.T.: 3.998 min
 Delta R.T.: -0.014 min
 Response: 87440800
 Conc: 776.77 ng/ml



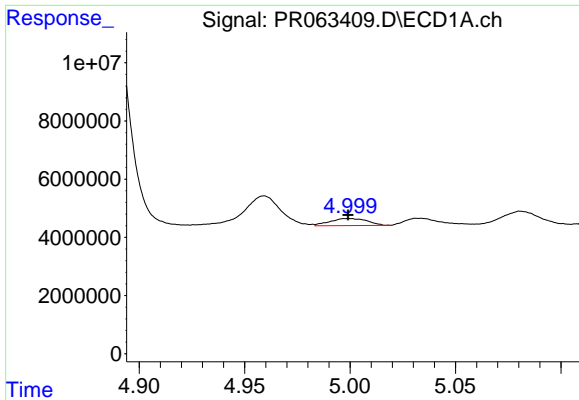
#4 AR-1016-2

R.T.: 4.959 min
 Delta R.T.: 0.025 min
 Response: 13352958
 Conc: 47.39 ng/ml



#4 AR-1016-2

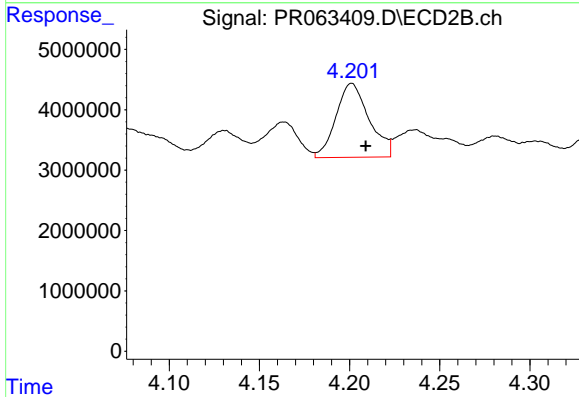
R.T.: 4.049 min
 Delta R.T.: 0.020 min
 Response: 71902518
 Conc: 423.22 ng/ml



#5 AR-1016-3

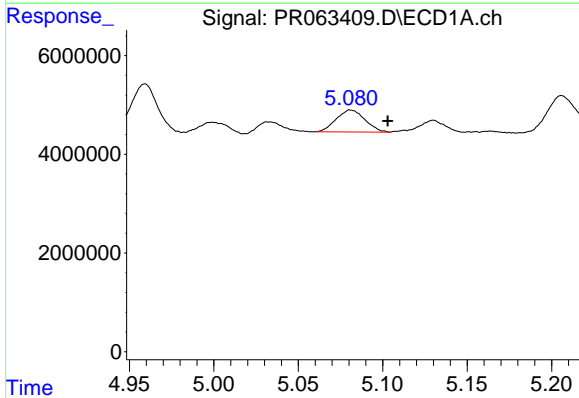
R.T.: 4.999 min
 Delta R.T.: 0.000 min
 Response: 2978408
 Conc: 17.73 ng/ml

Instrument :
 ECD_R
 ClientSampleId :



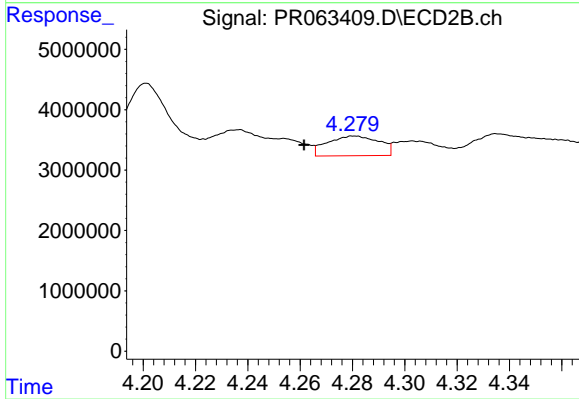
#5 AR-1016-3

R.T.: 4.201 min
 Delta R.T.: -0.008 min
 Response: 15673724
 Conc: 180.32 ng/ml



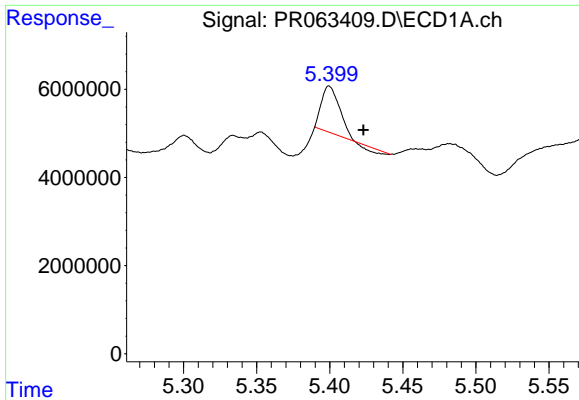
#6 AR-1016-4

R.T.: 5.081 min
 Delta R.T.: -0.022 min
 Response: 5245001
 Conc: 38.21 ng/ml



#6 AR-1016-4

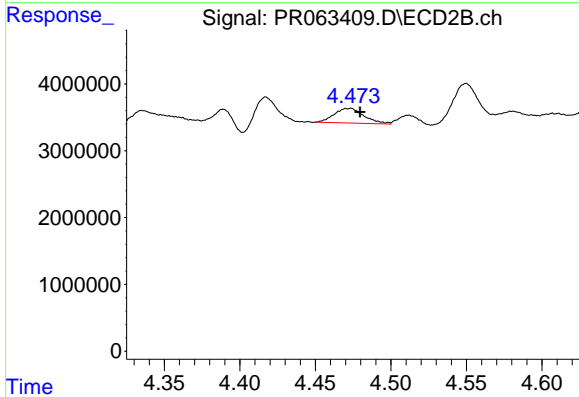
R.T.: 4.281 min
 Delta R.T.: 0.019 min
 Response: 4482506
 Conc: 66.28 ng/ml



#7 AR-1016-5

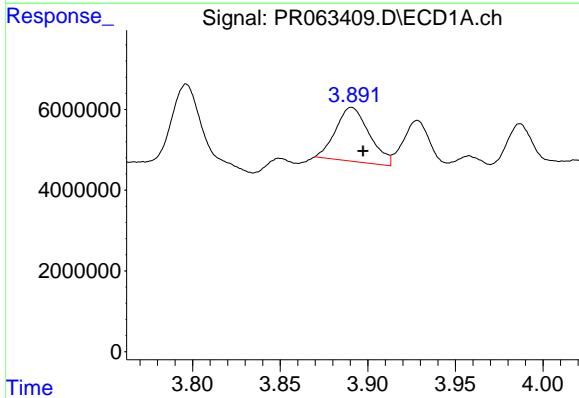
R.T.: 5.400 min
 Delta R.T.: -0.023 min
 Response: 8308945
 Conc: 62.26 ng/ml

Instrument :
 ECD_R
 ClientSampleId :



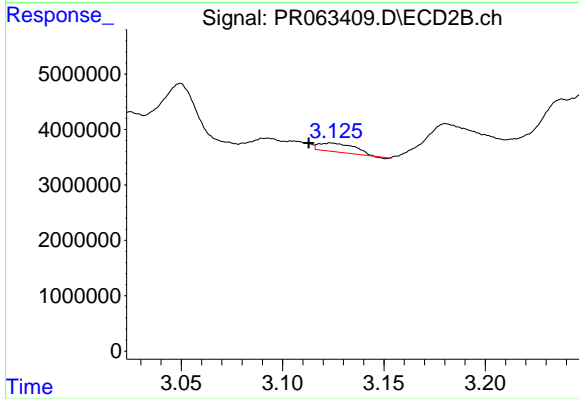
#7 AR-1016-5

R.T.: 4.473 min
 Delta R.T.: -0.007 min
 Response: 3008420
 Conc: 34.74 ng/ml



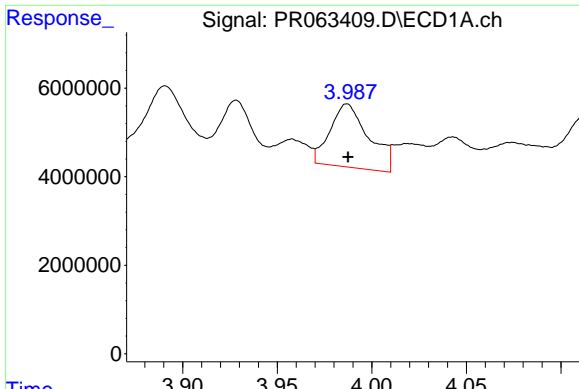
#8 AR-1221-1

R.T.: 3.891 min
 Delta R.T.: -0.007 min
 Response: 17823389
 Conc: 245.56 ng/ml



#8 AR-1221-1

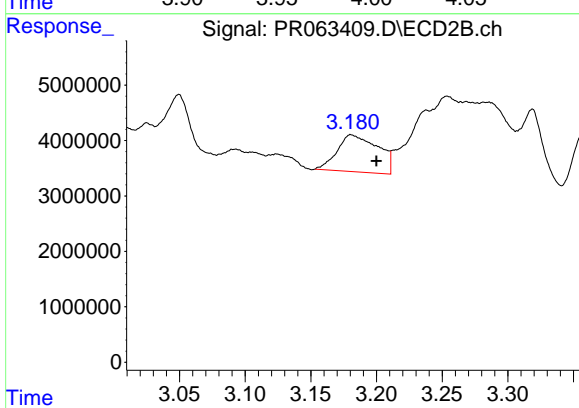
R.T.: 3.124 min
 Delta R.T.: 0.011 min
 Response: 1804018
 Conc: 48.72 ng/ml



#9 AR-1221-2

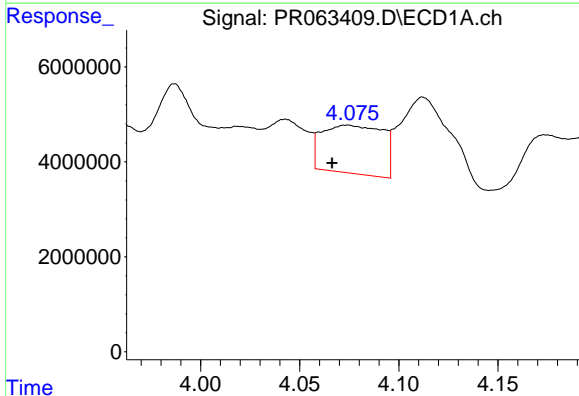
R.T.: 3.987 min
 Delta R.T.: 0.000 min
 Response: 20416501
 Conc: 434.97 ng/ml

Instrument :
 ECD_R
 ClientSampleId :



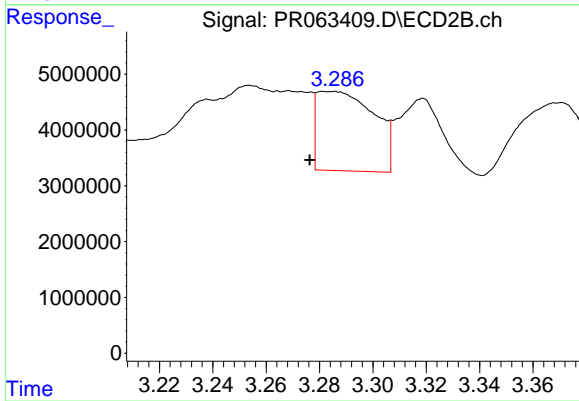
#9 AR-1221-2

R.T.: 3.181 min
 Delta R.T.: -0.019 min
 Response: 14460528
 Conc: 560.78 ng/ml



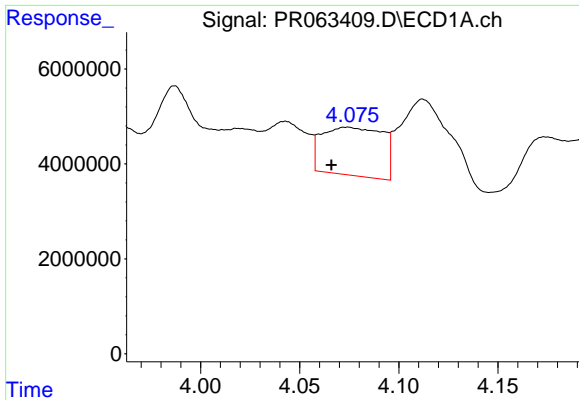
#10 AR-1221-3

R.T.: 4.074 min
 Delta R.T.: 0.008 min
 Response: 21660627
 Conc: 134.25 ng/ml



#10 AR-1221-3

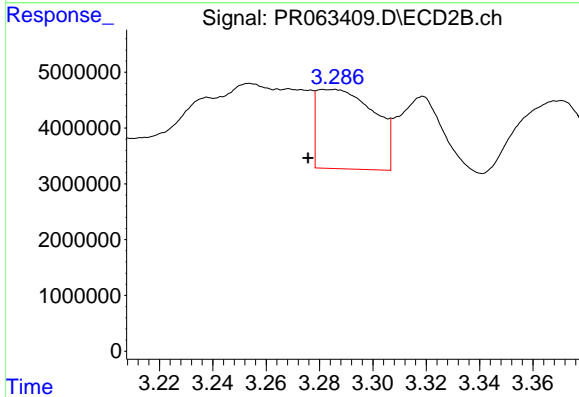
R.T.: 3.283 min
 Delta R.T.: 0.006 min
 Response: 21193174
 Conc: 221.19 ng/ml



#11 AR-1232-1

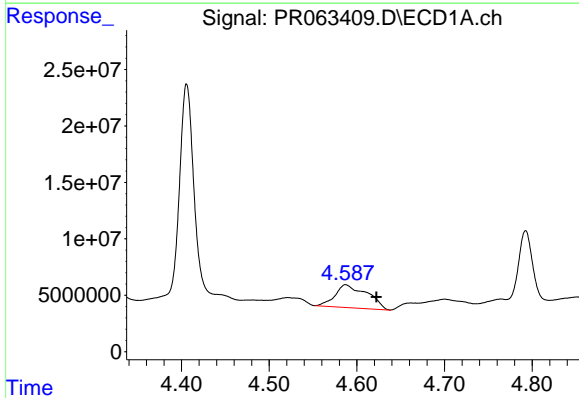
R.T.: 4.074 min
 Delta R.T.: 0.008 min
 Response: 21660627
 Conc: 159.69 ng/ml

Instrument :
 ECD_R
 ClientSampleId :



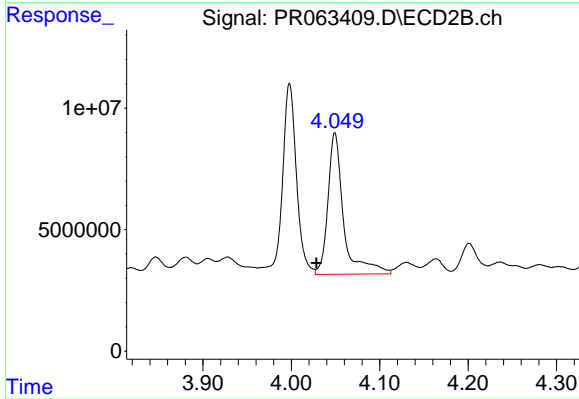
#11 AR-1232-1

R.T.: 3.283 min
 Delta R.T.: 0.007 min
 Response: 21193174
 Conc: 265.94 ng/ml



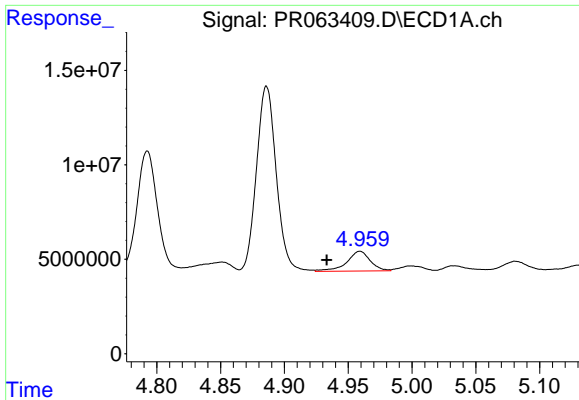
#12 AR-1232-2

R.T.: 4.587 min
 Delta R.T.: -0.035 min
 Response: 51786472
 Conc: 817.77 ng/ml



#12 AR-1232-2

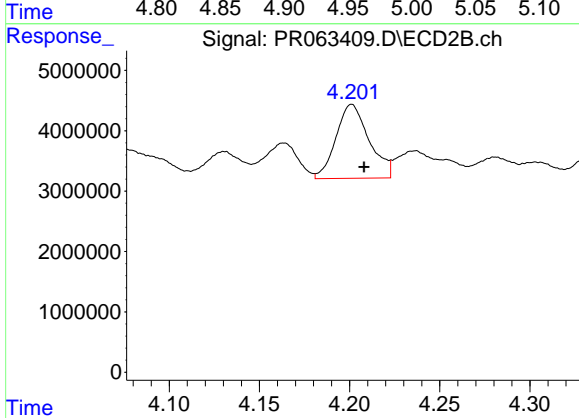
R.T.: 4.049 min
 Delta R.T.: 0.021 min
 Response: 71902518
 Conc: 960.90 ng/ml



#13 AR-1232-3

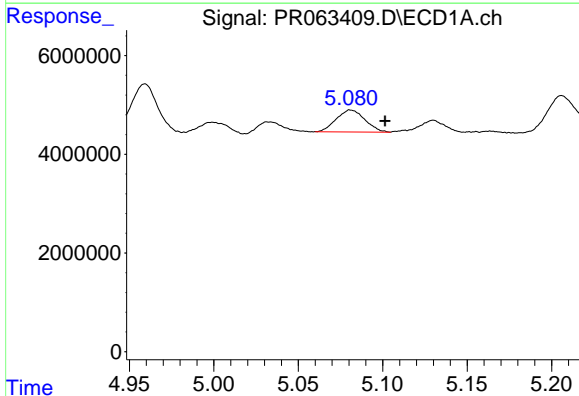
R.T.: 4.959 min
 Delta R.T.: 0.026 min
 Response: 13352958
 Conc: 106.14 ng/ml

Instrument :
 ECD_R
 ClientSampleId :



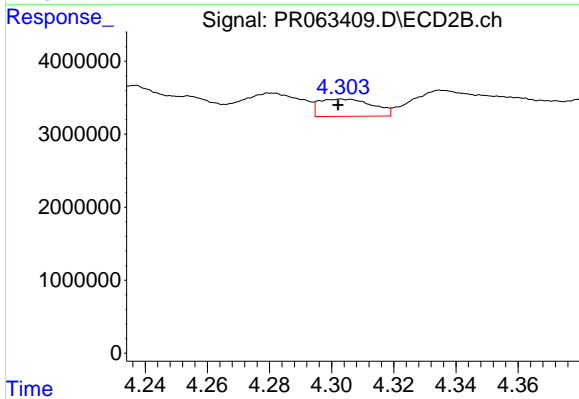
#13 AR-1232-3

R.T.: 4.201 min
 Delta R.T.: -0.007 min
 Response: 15673724
 Conc: 416.30 ng/ml



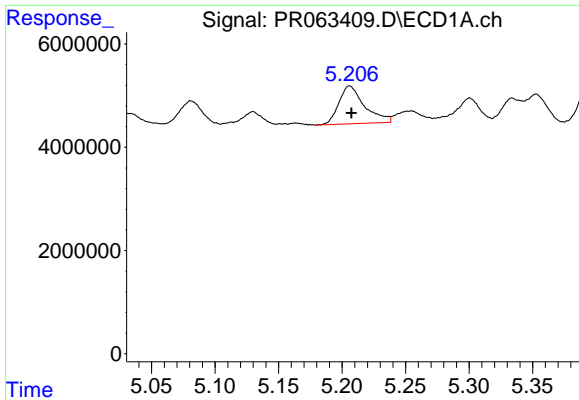
#14 AR-1232-4

R.T.: 5.081 min
 Delta R.T.: -0.020 min
 Response: 5245001
 Conc: 86.57 ng/ml



#14 AR-1232-4

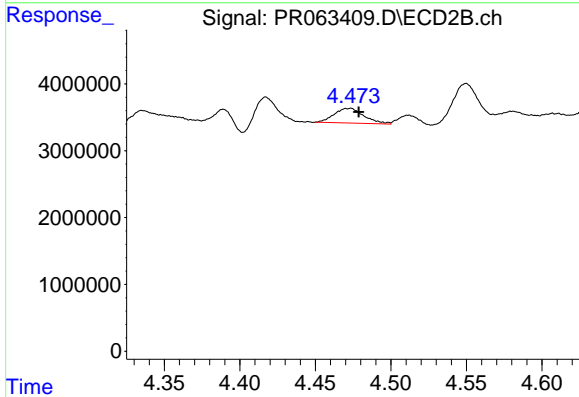
R.T.: 4.303 min
 Delta R.T.: 0.001 min
 Response: 2832733
 Conc: 89.28 ng/ml



#15 AR-1232-5

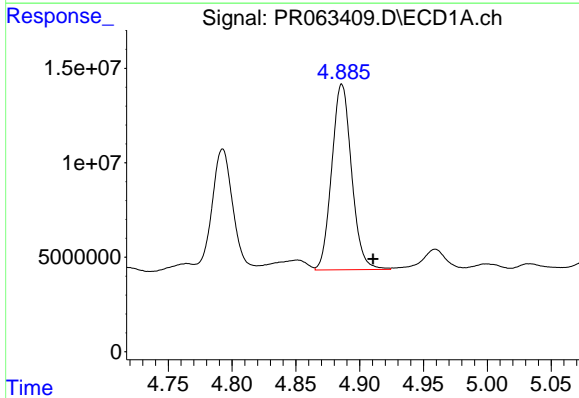
R.T.: 5.206 min
 Delta R.T.: -0.001 min
 Response: 10346452
 Conc: 239.19 ng/ml

Instrument :
 ECD_R
 ClientSampleId :



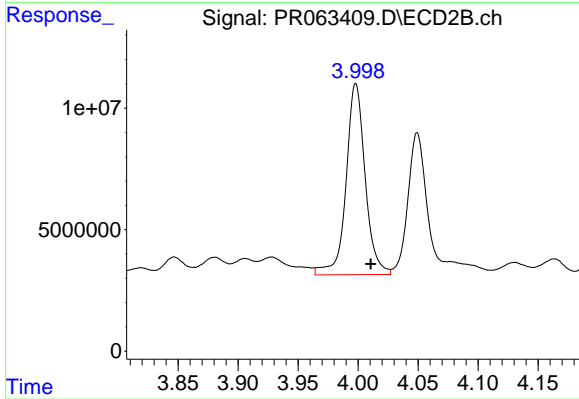
#15 AR-1232-5

R.T.: 4.473 min
 Delta R.T.: -0.006 min
 Response: 3008420
 Conc: 83.43 ng/ml



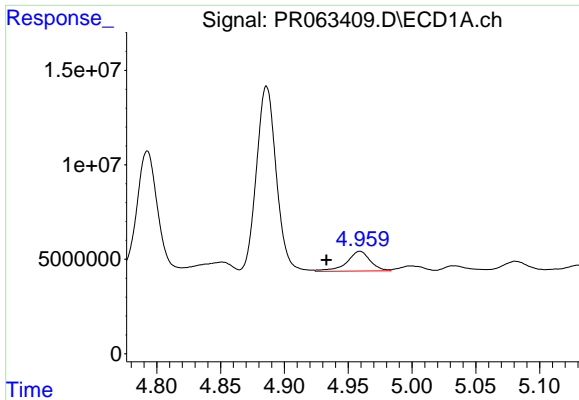
#16 AR-1242-1

R.T.: 4.886 min
 Delta R.T.: -0.024 min
 Response: 106374688
 Conc: 638.07 ng/ml



#16 AR-1242-1

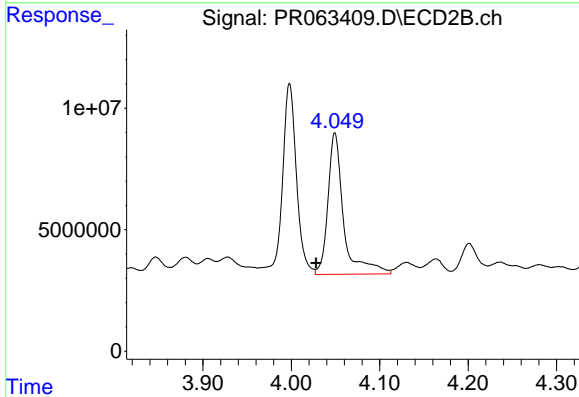
R.T.: 3.998 min
 Delta R.T.: -0.013 min
 Response: 87440800
 Conc: 915.93 ng/ml



#17 AR-1242-2

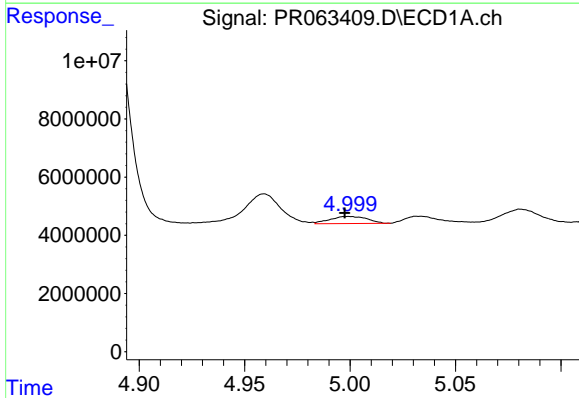
R.T.: 4.959 min
 Delta R.T.: 0.026 min
 Response: 13352958
 Conc: 55.96 ng/ml

Instrument :
 ECD_R
 ClientSampleId :



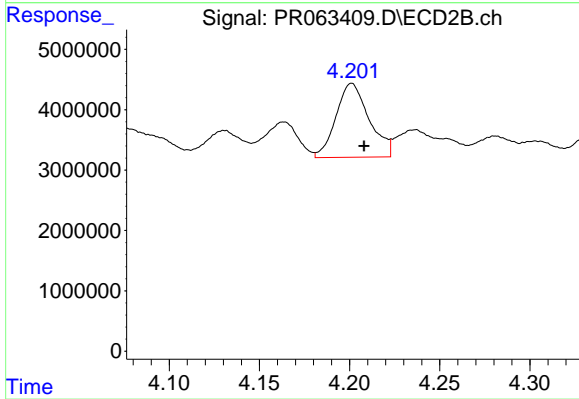
#17 AR-1242-2

R.T.: 4.049 min
 Delta R.T.: 0.021 min
 Response: 71902518
 Conc: 503.53 ng/ml



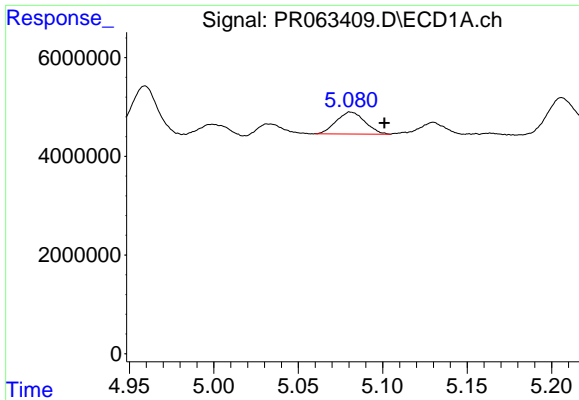
#18 AR-1242-3

R.T.: 4.999 min
 Delta R.T.: 0.002 min
 Response: 2978408
 Conc: 20.98 ng/ml



#18 AR-1242-3

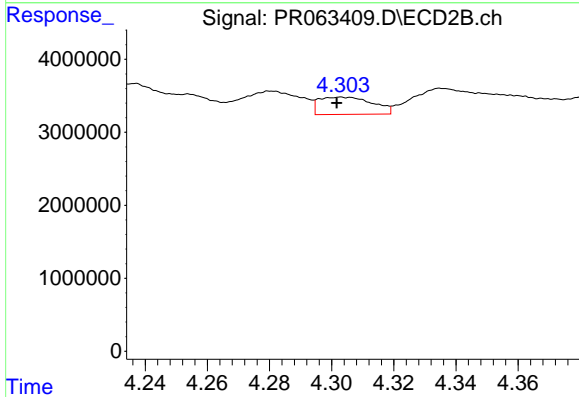
R.T.: 4.201 min
 Delta R.T.: -0.007 min
 Response: 15673724
 Conc: 213.97 ng/ml



#19 AR-1242-4

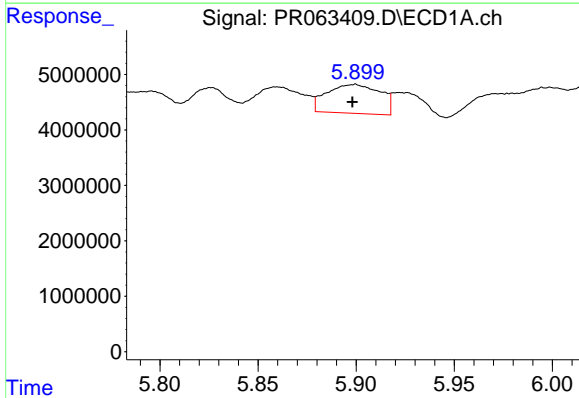
R.T.: 5.081 min
 Delta R.T.: -0.020 min
 Response: 5245001
 Conc: 44.75 ng/ml

Instrument :
 ECD_R
 ClientSampleId :



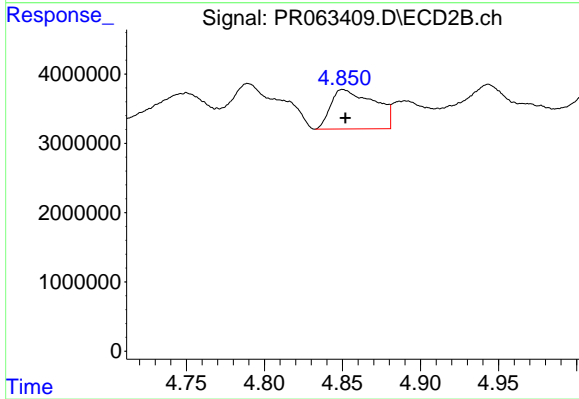
#19 AR-1242-4

R.T.: 4.303 min
 Delta R.T.: 0.002 min
 Response: 2832733
 Conc: 41.42 ng/ml



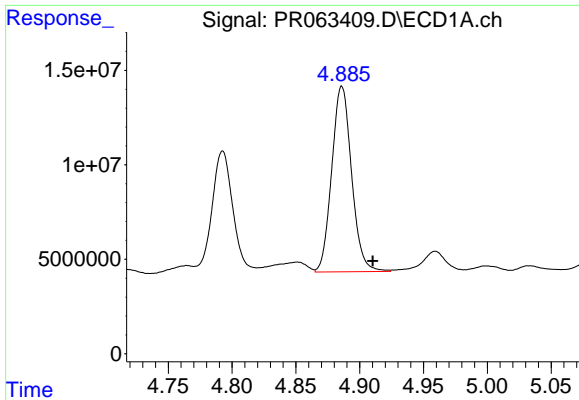
#20 AR-1242-5

R.T.: 5.899 min
 Delta R.T.: 0.001 min
 Response: 9908162
 Conc: 85.44 ng/ml



#20 AR-1242-5

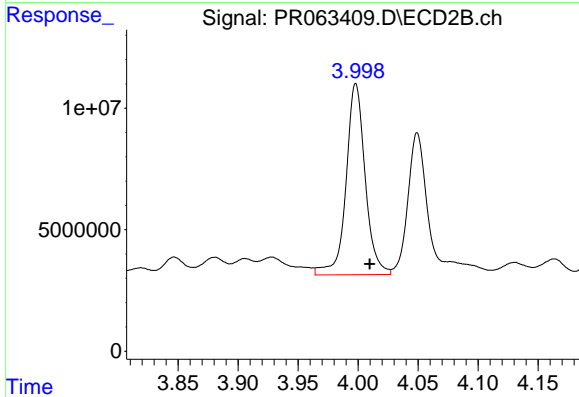
R.T.: 4.850 min
 Delta R.T.: -0.002 min
 Response: 11072453
 Conc: 126.58 ng/ml



#21 AR-1248-1

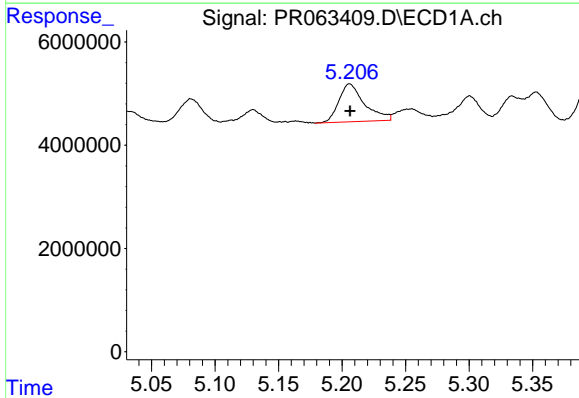
R.T.: 4.886 min
 Delta R.T.: -0.024 min
 Response: 106374688
 Conc: 822.69 ng/ml

Instrument :
 ECD_R
 ClientSampleId :



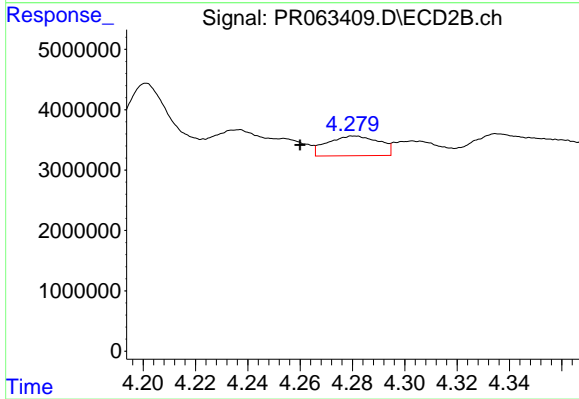
#21 AR-1248-1

R.T.: 3.998 min
 Delta R.T.: -0.012 min
 Response: 87440800
 Conc: 1170.66 ng/ml



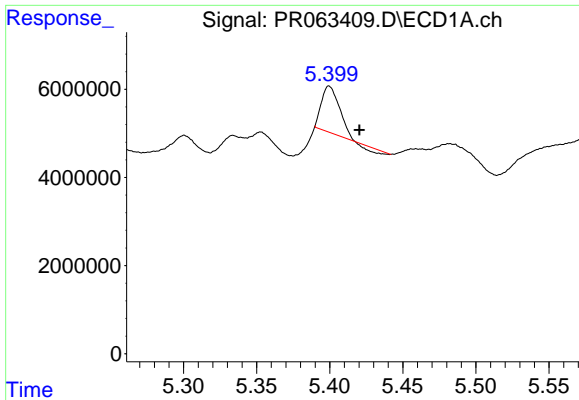
#22 AR-1248-2

R.T.: 5.206 min
 Delta R.T.: 0.000 min
 Response: 10346452
 Conc: 61.01 ng/ml



#22 AR-1248-2

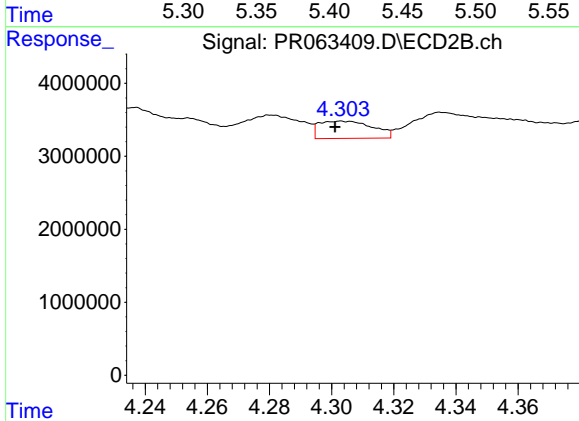
R.T.: 4.281 min
 Delta R.T.: 0.021 min
 Response: 4482506
 Conc: 41.99 ng/ml



#23 AR-1248-3

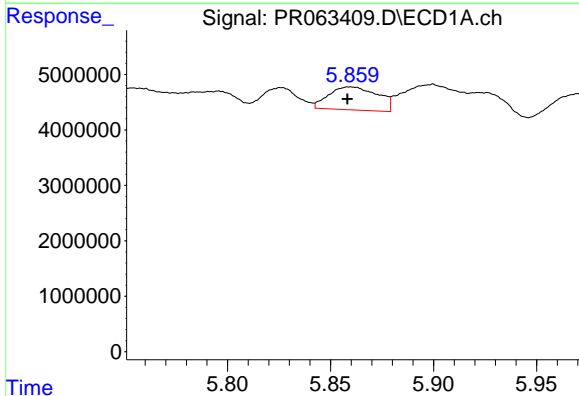
R.T.: 5.400 min
 Delta R.T.: -0.021 min
 Response: 8308945
 Conc: 41.17 ng/ml

Instrument :
 ECD_R
 ClientSampleId :



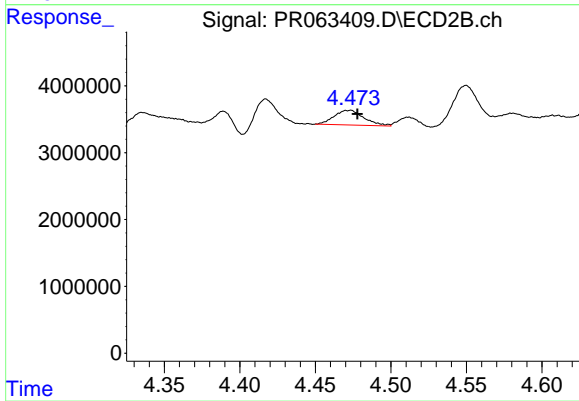
#23 AR-1248-3

R.T.: 4.303 min
 Delta R.T.: 0.002 min
 Response: 2832733
 Conc: 26.64 ng/ml



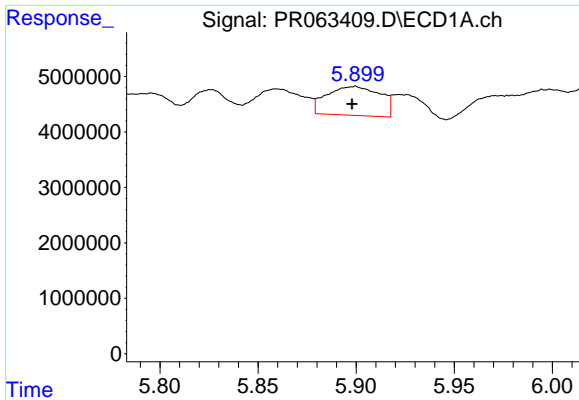
#24 AR-1248-4

R.T.: 5.860 min
 Delta R.T.: 0.002 min
 Response: 6856335
 Conc: 31.47 ng/ml



#24 AR-1248-4

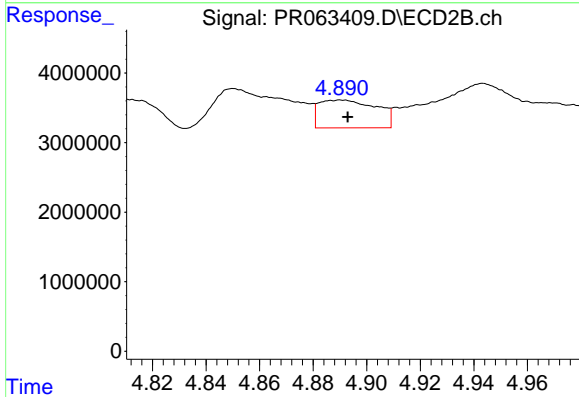
R.T.: 4.473 min
 Delta R.T.: -0.005 min
 Response: 3008420
 Conc: 23.16 ng/ml



#25 AR-1248-5

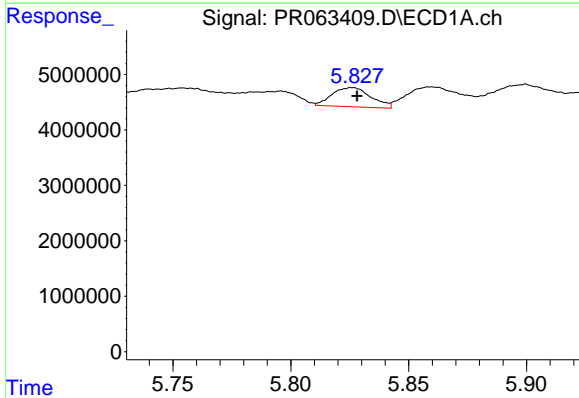
R.T.: 5.899 min
 Delta R.T.: 0.001 min
 Response: 9908162
 Conc: 47.09 ng/ml

Instrument :
 ECD_R
 ClientSampleId :



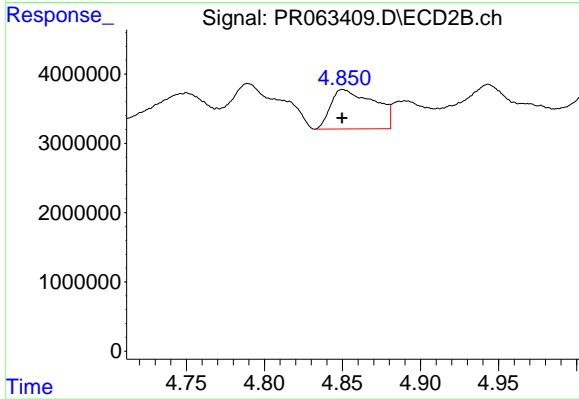
#25 AR-1248-5

R.T.: 4.891 min
 Delta R.T.: -0.002 min
 Response: 5973749
 Conc: 46.47 ng/ml



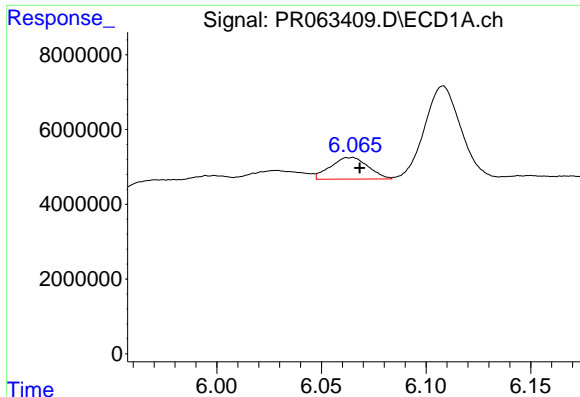
#26 AR-1254-1

R.T.: 5.826 min
 Delta R.T.: -0.002 min
 Response: 3976817
 Conc: 18.12 ng/ml



#26 AR-1254-1

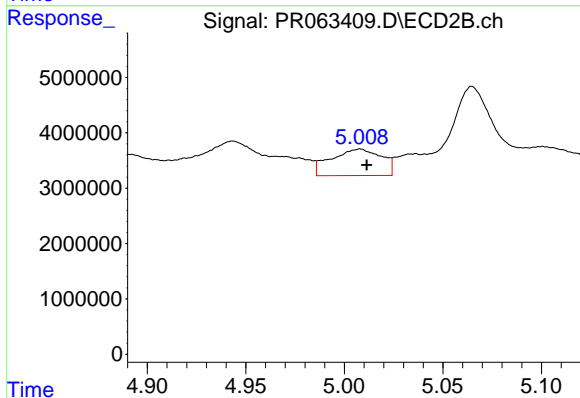
R.T.: 4.850 min
 Delta R.T.: 0.000 min
 Response: 11072453
 Conc: 56.08 ng/ml



#27 AR-1254-2

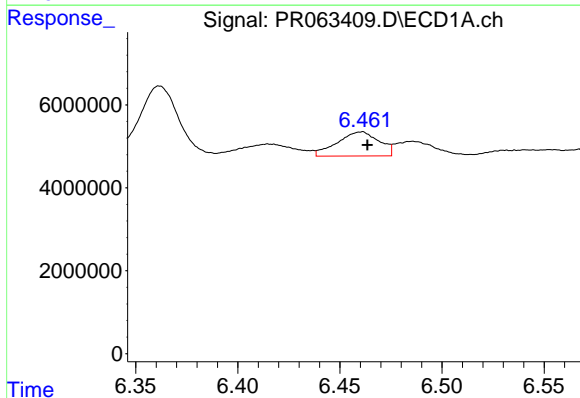
R.T.: 6.064 min
 Delta R.T.: -0.004 min
 Response: 7210069
 Conc: 21.76 ng/ml

Instrument :
 ECD_R
 ClientSampleId :



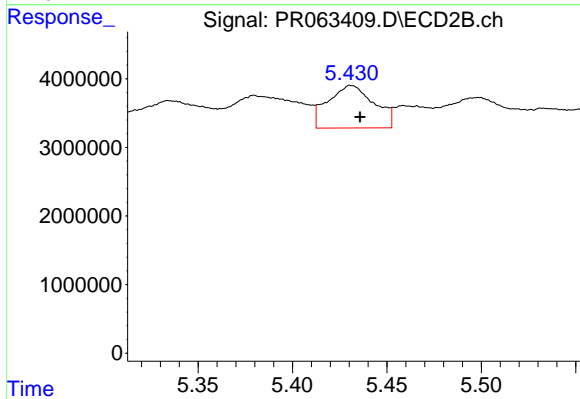
#27 AR-1254-2

R.T.: 5.008 min
 Delta R.T.: -0.003 min
 Response: 8539883
 Conc: 50.52 ng/ml



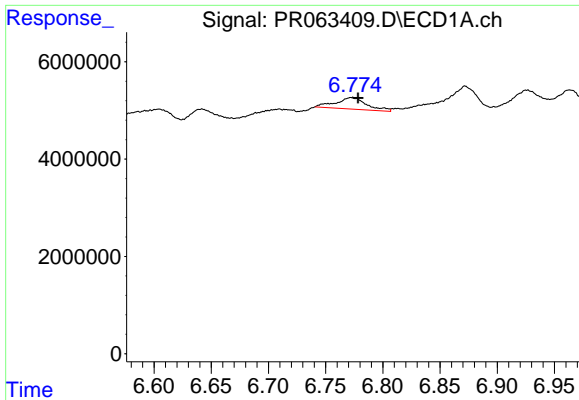
#28 AR-1254-3

R.T.: 6.461 min
 Delta R.T.: -0.003 min
 Response: 8306249
 Conc: 24.66 ng/ml



#28 AR-1254-3

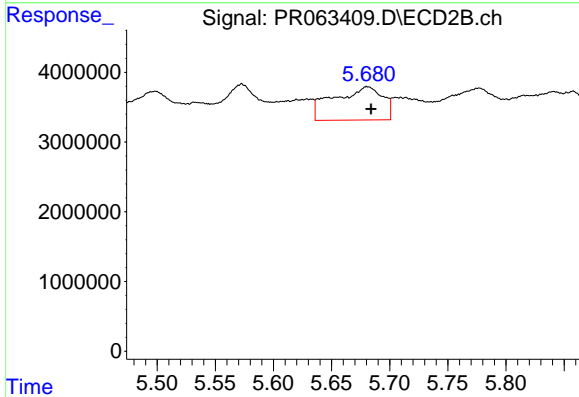
R.T.: 5.431 min
 Delta R.T.: -0.005 min
 Response: 10539516
 Conc: 38.82 ng/ml



#29 AR-1254-4

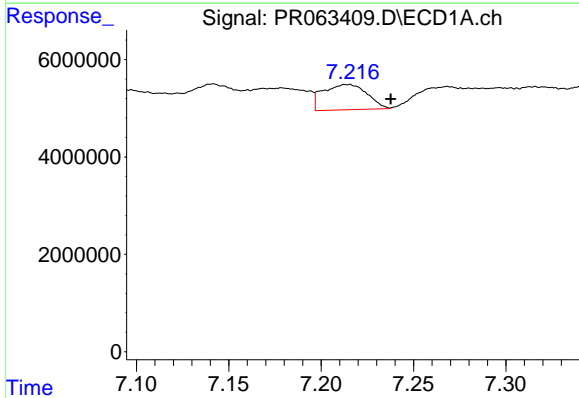
R.T.: 6.773 min
 Delta R.T.: -0.005 min
 Response: 4462268
 Conc: 19.25 ng/ml

Instrument :
 ECD_R
 ClientSampleId :



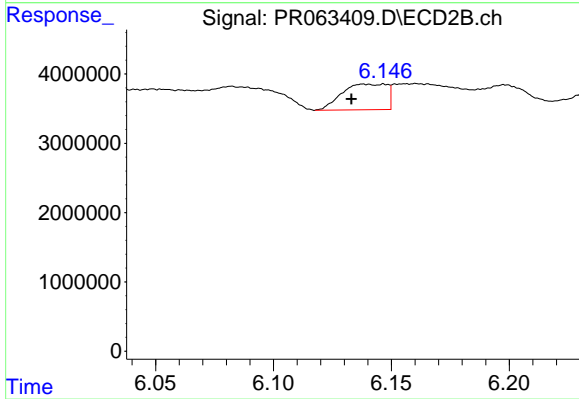
#29 AR-1254-4

R.T.: 5.681 min
 Delta R.T.: -0.003 min
 Response: 14038718
 Conc: 83.68 ng/ml



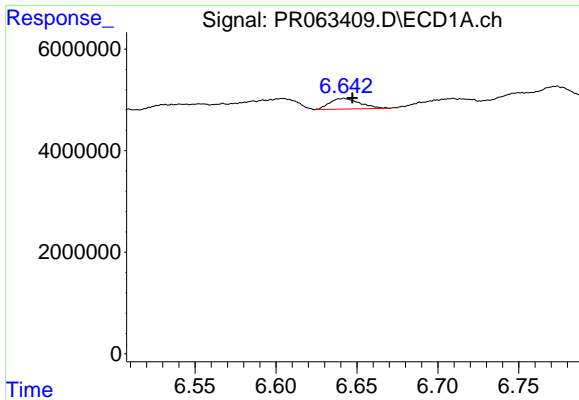
#30 AR-1254-5

R.T.: 7.214 min
 Delta R.T.: -0.023 min
 Response: 8628058
 Conc: 35.33 ng/ml



#30 AR-1254-5

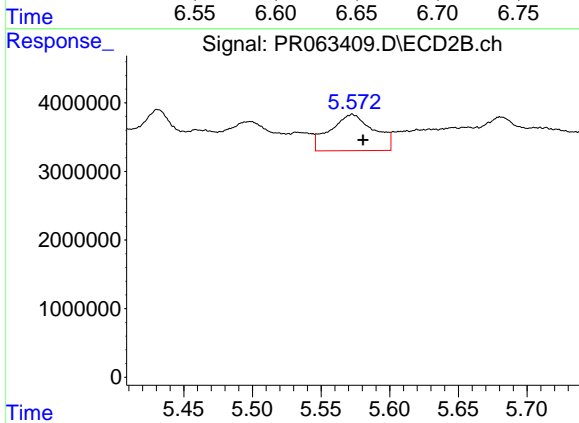
R.T.: 6.139 min
 Delta R.T.: 0.006 min
 Response: 4901871
 Conc: 21.08 ng/ml



#31 AR-1260-1

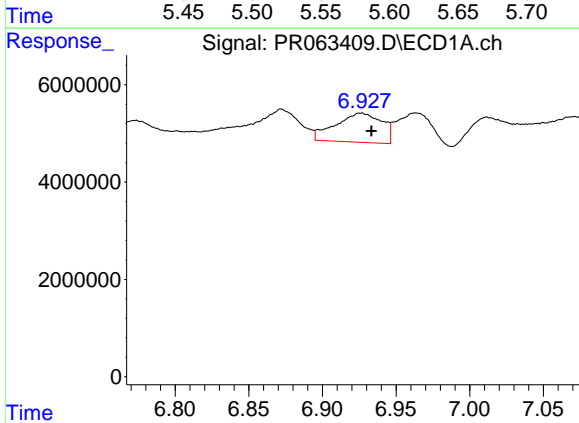
R.T.: 6.642 min
 Delta R.T.: -0.006 min
 Response: 2705702
 Conc: 11.26 ng/ml

Instrument :
 ECD_R
 ClientSampleId :



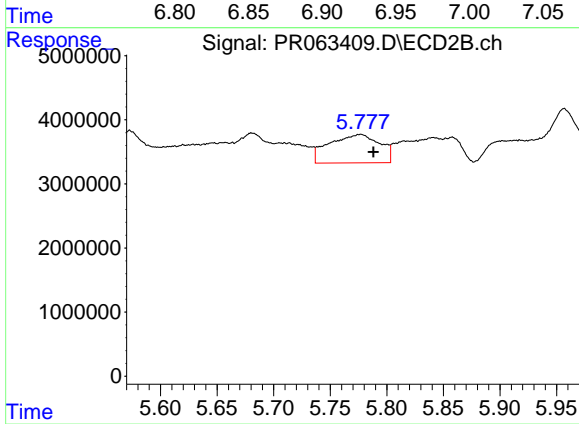
#31 AR-1260-1

R.T.: 5.573 min
 Delta R.T.: -0.008 min
 Response: 11771254
 Conc: 66.35 ng/ml



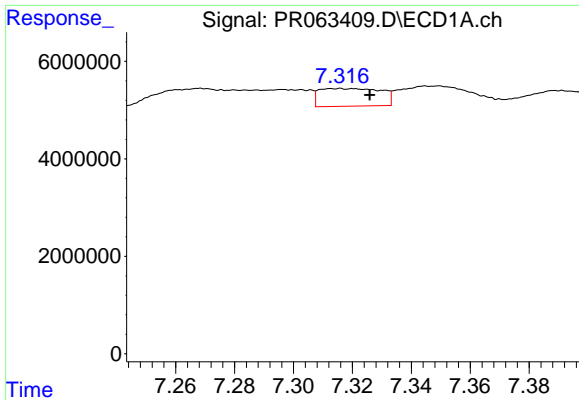
#32 AR-1260-2

R.T.: 6.926 min
 Delta R.T.: -0.007 min
 Response: 13180477
 Conc: 48.05 ng/ml



#32 AR-1260-2

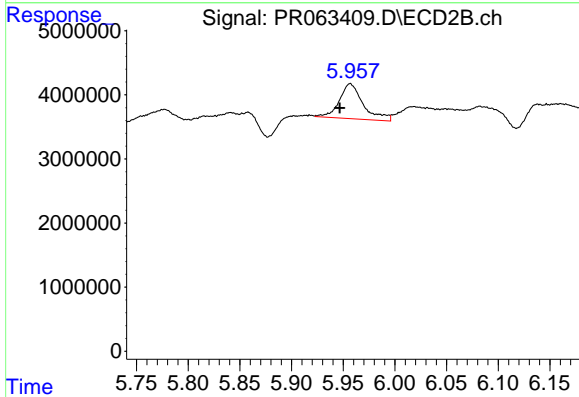
R.T.: 5.777 min
 Delta R.T.: -0.011 min
 Response: 13776078
 Conc: 64.72 ng/ml



#33 AR-1260-3

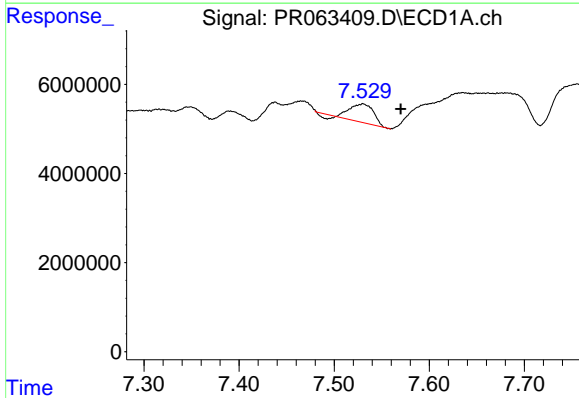
R.T.: 7.320 min
 Delta R.T.: -0.006 min
 Response: 5282234
 Conc: 27.62 ng/ml

Instrument :
 ECD_R
 ClientSampleId :



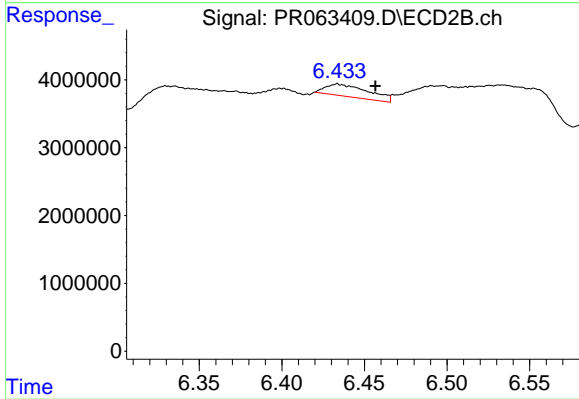
#33 AR-1260-3

R.T.: 5.957 min
 Delta R.T.: 0.010 min
 Response: 8728445
 Conc: 43.82 ng/ml



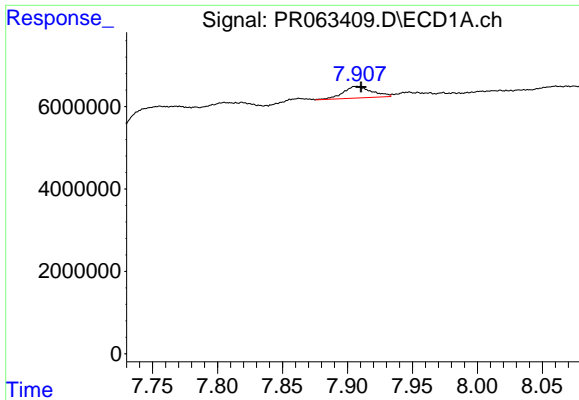
#34 AR-1260-4

R.T.: 7.530 min
 Delta R.T.: -0.040 min
 Response: 6834425
 Conc: 31.26 ng/ml



#34 AR-1260-4

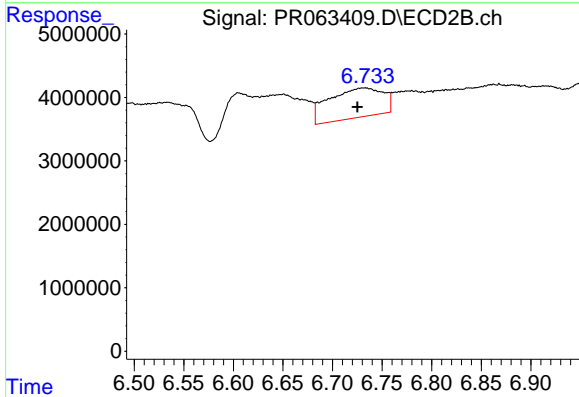
R.T.: 6.434 min
 Delta R.T.: -0.023 min
 Response: 3225536
 Conc: 19.70 ng/ml



#35 AR-1260-5

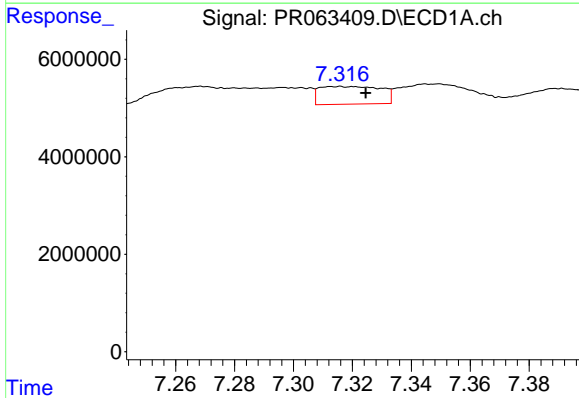
R.T.: 7.907 min
 Delta R.T.: -0.003 min
 Response: 4280007
 Conc: 9.89 ng/ml

Instrument :
 ECD_R
 ClientSampleId :



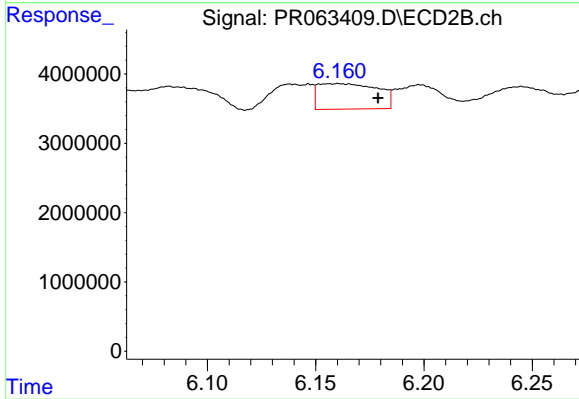
#35 AR-1260-5

R.T.: 6.733 min
 Delta R.T.: 0.008 min
 Response: 17755258
 Conc: 44.85 ng/ml



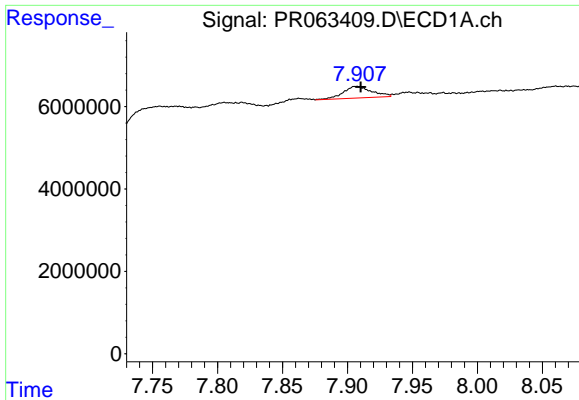
#36 AR-1262-1

R.T.: 7.320 min
 Delta R.T.: -0.004 min
 Response: 5282234
 Conc: 17.34 ng/ml



#36 AR-1262-1

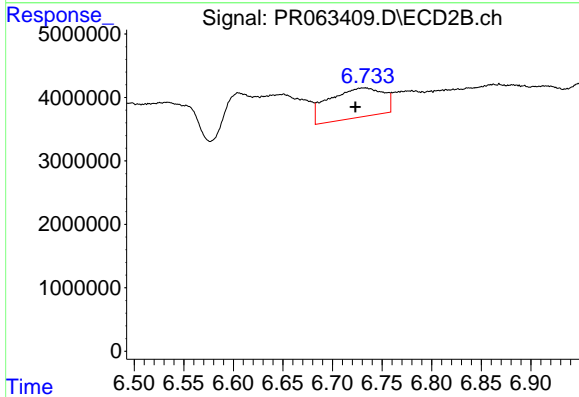
R.T.: 6.161 min
 Delta R.T.: -0.018 min
 Response: 7053906
 Conc: 27.89 ng/ml



#37 AR-1262-2

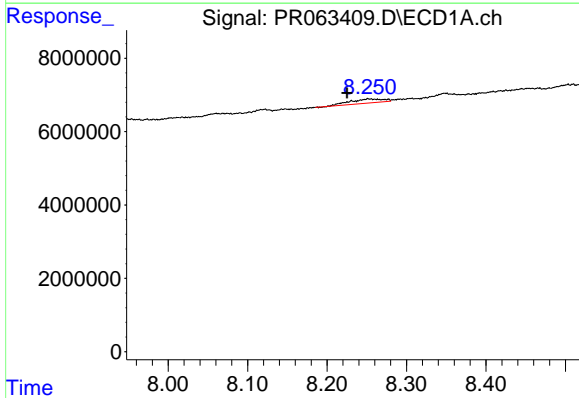
R.T.: 7.907 min
 Delta R.T.: -0.003 min
 Response: 4280007
 Conc: 8.35 ng/ml

Instrument :
 ECD_R
 ClientSampleId :



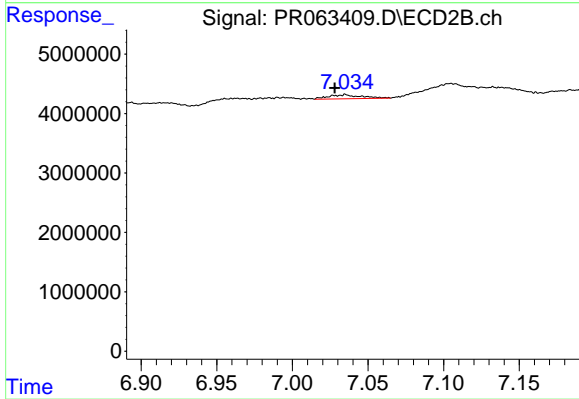
#37 AR-1262-2

R.T.: 6.733 min
 Delta R.T.: 0.010 min
 Response: 17755258
 Conc: 38.71 ng/ml



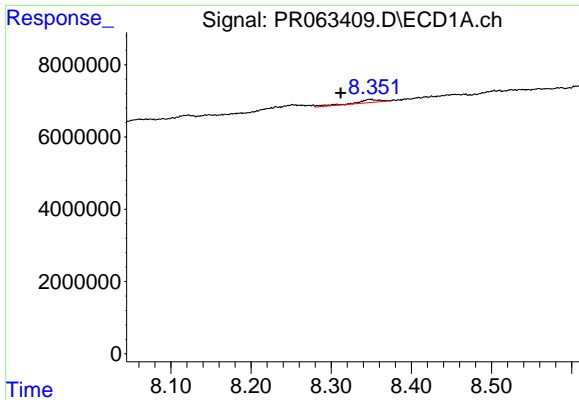
#38 AR-1262-3

R.T.: 8.252 min
 Delta R.T.: 0.027 min
 Response: 3256921
 Conc: 9.75 ng/ml



#38 AR-1262-3

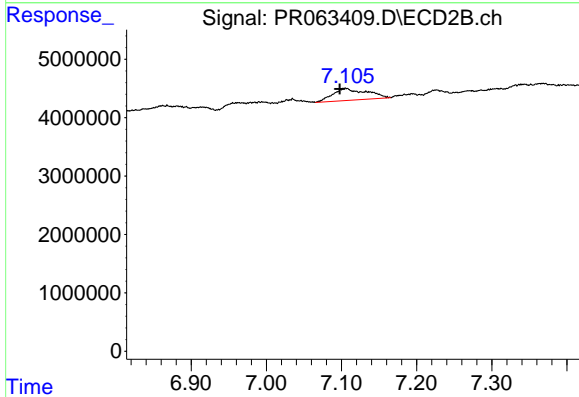
R.T.: 7.035 min
 Delta R.T.: 0.007 min
 Response: 1006106
 Conc: 5.65 ng/ml



#39 AR-1262-4

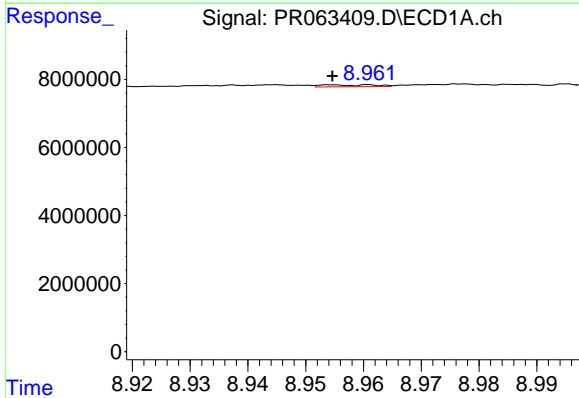
R.T.: 8.349 min
 Delta R.T.: 0.037 min
 Response: 1809524
 Conc: 7.27 ng/ml

Instrument :
 ECD_R
 ClientSampleId :



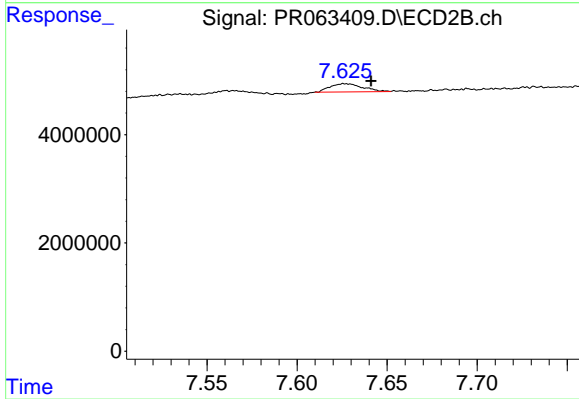
#39 AR-1262-4

R.T.: 7.105 min
 Delta R.T.: 0.007 min
 Response: 6402047
 Conc: 19.03 ng/ml



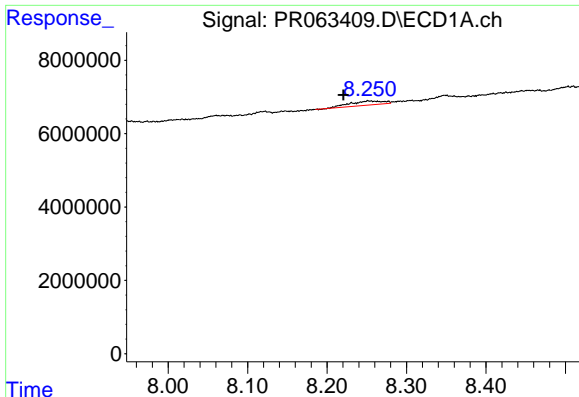
#40 AR-1262-5

R.T.: 8.954 min
 Delta R.T.: 0.000 min
 Response: 372279
 Conc: 2.09 ng/ml



#40 AR-1262-5

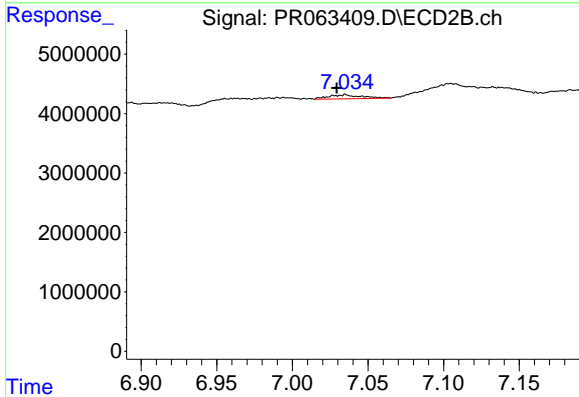
R.T.: 7.627 min
 Delta R.T.: -0.014 min
 Response: 1939505
 Conc: 12.85 ng/ml



#41 AR-1268-1

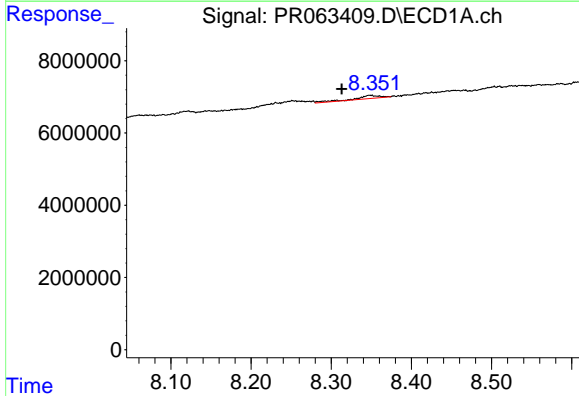
R.T.: 8.252 min
 Delta R.T.: 0.032 min
 Response: 3256921
 Conc: 5.42 ng/ml

Instrument :
 ECD_R
 ClientSampleId :



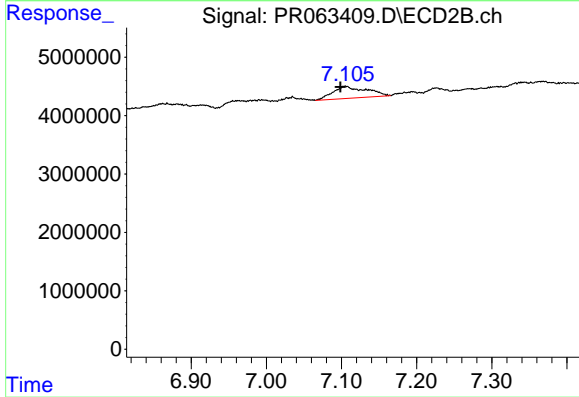
#41 AR-1268-1

R.T.: 7.035 min
 Delta R.T.: 0.006 min
 Response: 1006106
 Conc: 1.86 ng/ml



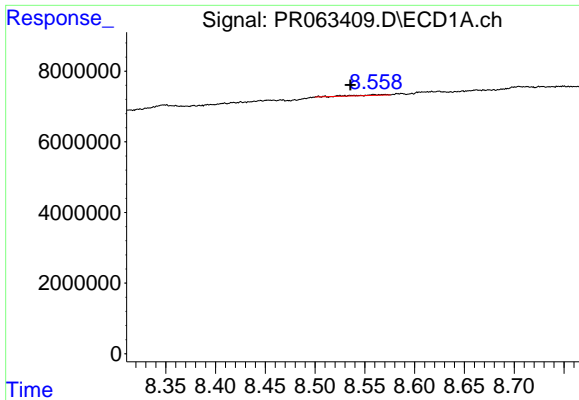
#42 AR-1268-2

R.T.: 8.349 min
 Delta R.T.: 0.036 min
 Response: 1809524
 Conc: 3.33 ng/ml



#42 AR-1268-2

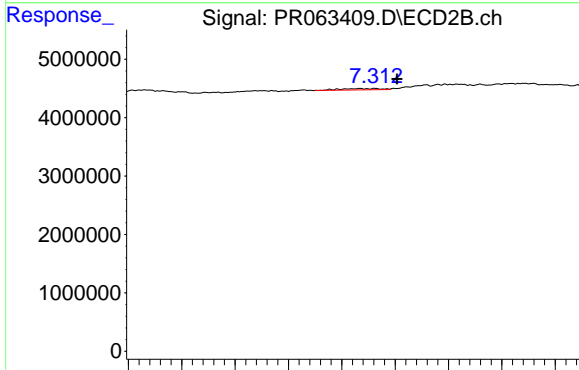
R.T.: 7.105 min
 Delta R.T.: 0.006 min
 Response: 6402047
 Conc: 13.05 ng/ml



#43 AR-1268-3

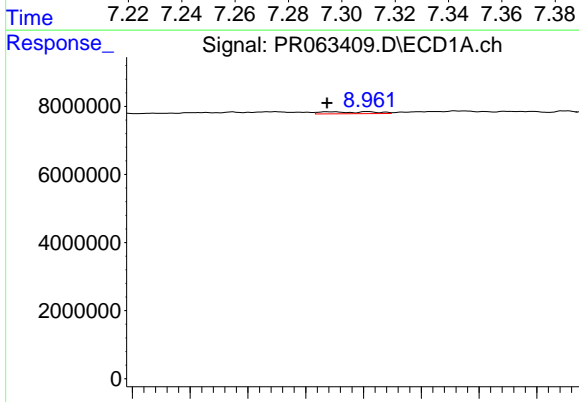
R.T.: 8.570 min
 Delta R.T.: 0.035 min
 Response: 343949
 Conc: 0.73 ng/ml

Instrument :
 ECD_R
 ClientSampleId :



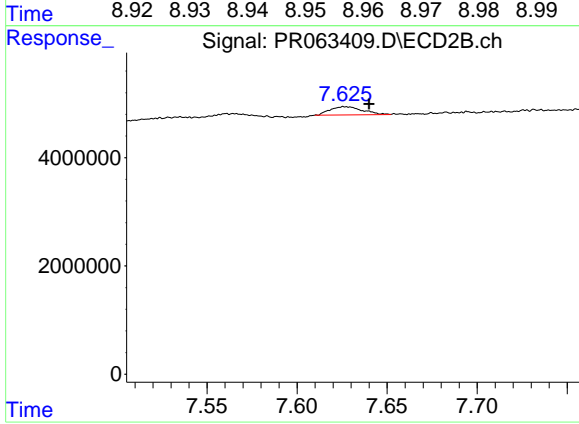
#43 AR-1268-3

R.T.: 7.313 min
 Delta R.T.: -0.008 min
 Response: 231848
 Conc: 0.56 ng/ml



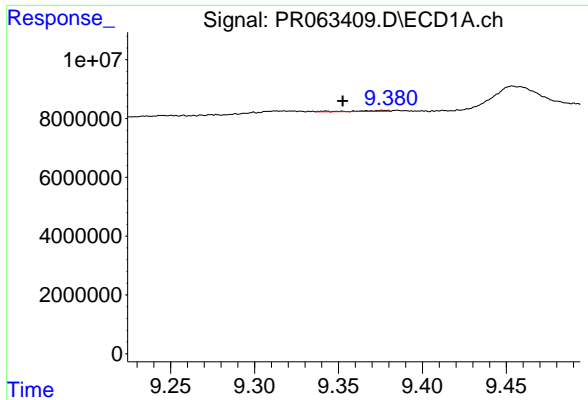
#44 AR-1268-4

R.T.: 8.954 min
 Delta R.T.: 0.000 min
 Response: 372279
 Conc: 1.86 ng/ml



#44 AR-1268-4

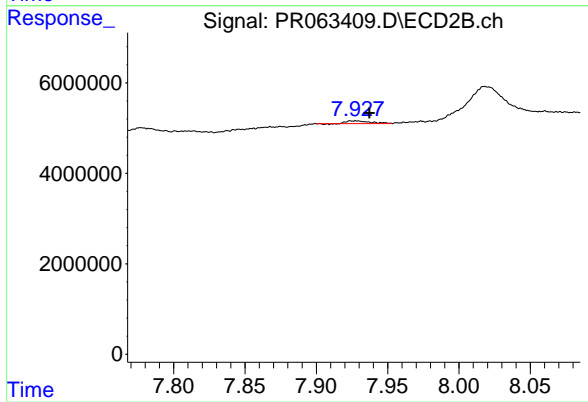
R.T.: 7.627 min
 Delta R.T.: -0.013 min
 Response: 1939505
 Conc: 11.45 ng/ml



#45 AR-1268-5

R.T.: 9.377 min
Delta R.T.: 0.025 min
Response: 383745
Conc: 0.25 ng/ml

Instrument :
ECD_R
ClientSampleId :



#45 AR-1268-5

R.T.: 7.928 min
Delta R.T.: -0.009 min
Response: 697197
Conc: 0.52 ng/ml