

Data Path : Z:\pestpcbsrv\HPCHEM1\ECD_R\Data\PR091922\
 Data File : PR056818.D
 Signal(s) : Signal #1: ECD1A.ch Signal #2: ECD2B.ch
 Acq On : 19 Sep 2022 19:31
 Operator : AJ\MA
 Sample : N4673-01
 Misc :
 ALS Vial : 29 Sample Multiplier: 1

Instrument :
 ECD_R
ClientSampleId :
 JC-520

Manual Integrations
APPROVED

Reviewed By :Yogesh Patel 09/20/2022
 Supervised By :Ankita Jodhani 09/20/2022

Integration File signal 1: autoint1.e
 Integration File signal 2: autoint2.e
 Quant Time: Sep 20 02:54:14 2022
 Quant Method : Z:\pestpcbsrv\HPCHEM1\ECD_R\Method\PR090722.M
 Quant Title : GC EXTRACTABLES
 QLast Update : Wed Sep 07 09:20:17 2022
 Response via : Initial Calibration
 Integrator: ChemStation

Volume Inj. : 2 µl
 Signal #1 Phase : ZB-MR1 Signal #2 Phase: ZB-MR2
 Signal #1 Info : 30Mx0.32mmx 0.50µ Signal #2 Info : 30M x 0.32mm x 0.25µm

Compound	RT#1	RT#2	Resp#1	Resp#2	ng/ml	ng/ml

System Monitoring Compounds						
1) SA Tetrachlo...	3.623	2.893	101.1E6	34921153	21.047	19.924
2) SA Decachlor...	9.507	8.096	44457448	37701628	22.404	22.660
Target Compounds						
16) L4 AR-1242-1	4.843	3.996	12685882	5007526	121.156m	111.553m
17) L4 AR-1242-2	4.865	4.013	17026992	7529143	112.017m	114.033m
18) L4 AR-1242-3	4.929	4.189	11229862	4240106	125.172m	117.053m
19) L4 AR-1242-4	5.032	4.282	9761397	3099591	134.535	95.832m#
20) L4 AR-1242-5	5.819	4.822	8205625	6465173	123.106	154.500 #

(f)=RT Delta > 1/2 Window (#)=Amounts differ by > 25% (m)=manual int.

Data Path : Z:\pestpcbsrv\HPCHEM1\ECD_R\Data\PR091922\
Data File : PR056818.D
Signal(s) : Signal #1: ECD1A.ch Signal #2: ECD2B.ch
Acq On : 19 Sep 2022 19:31
Operator : AJ\MA
Sample : N4673-01
Misc :
ALS Vial : 29 Sample Multiplier: 1

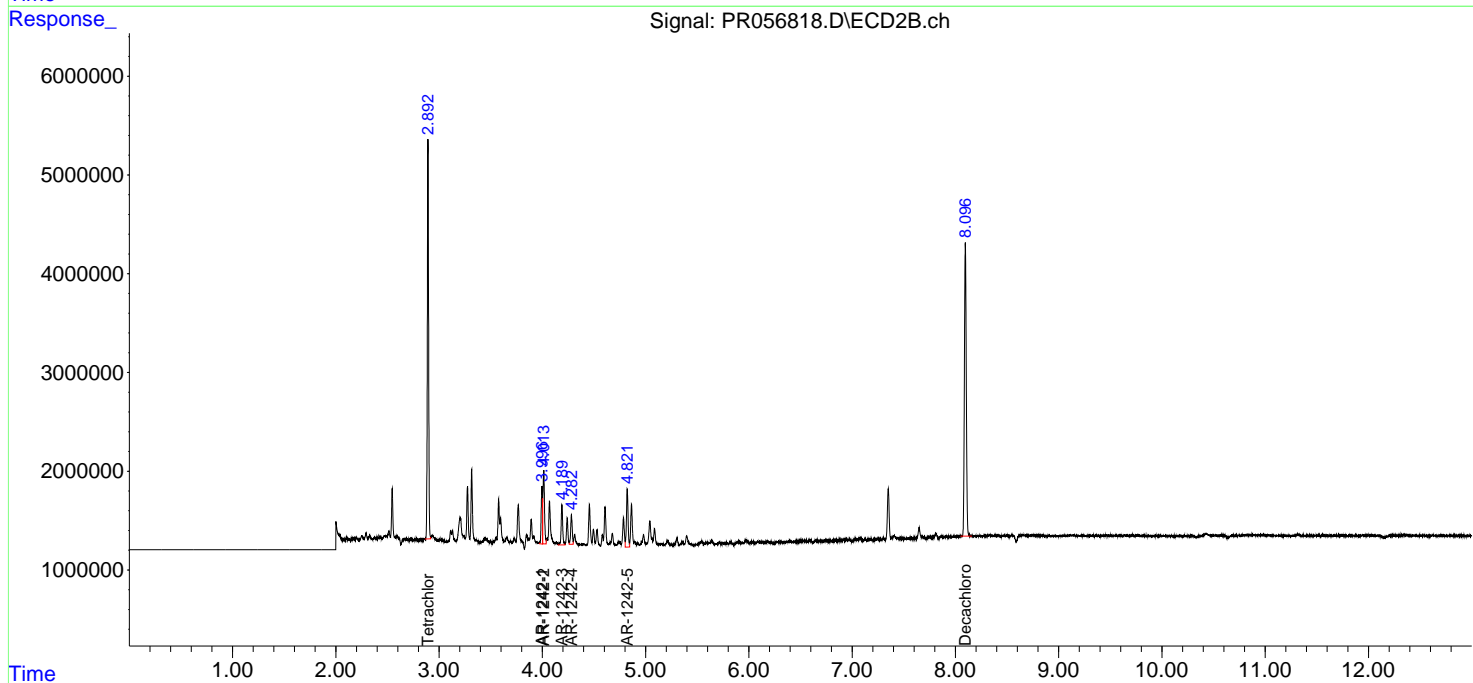
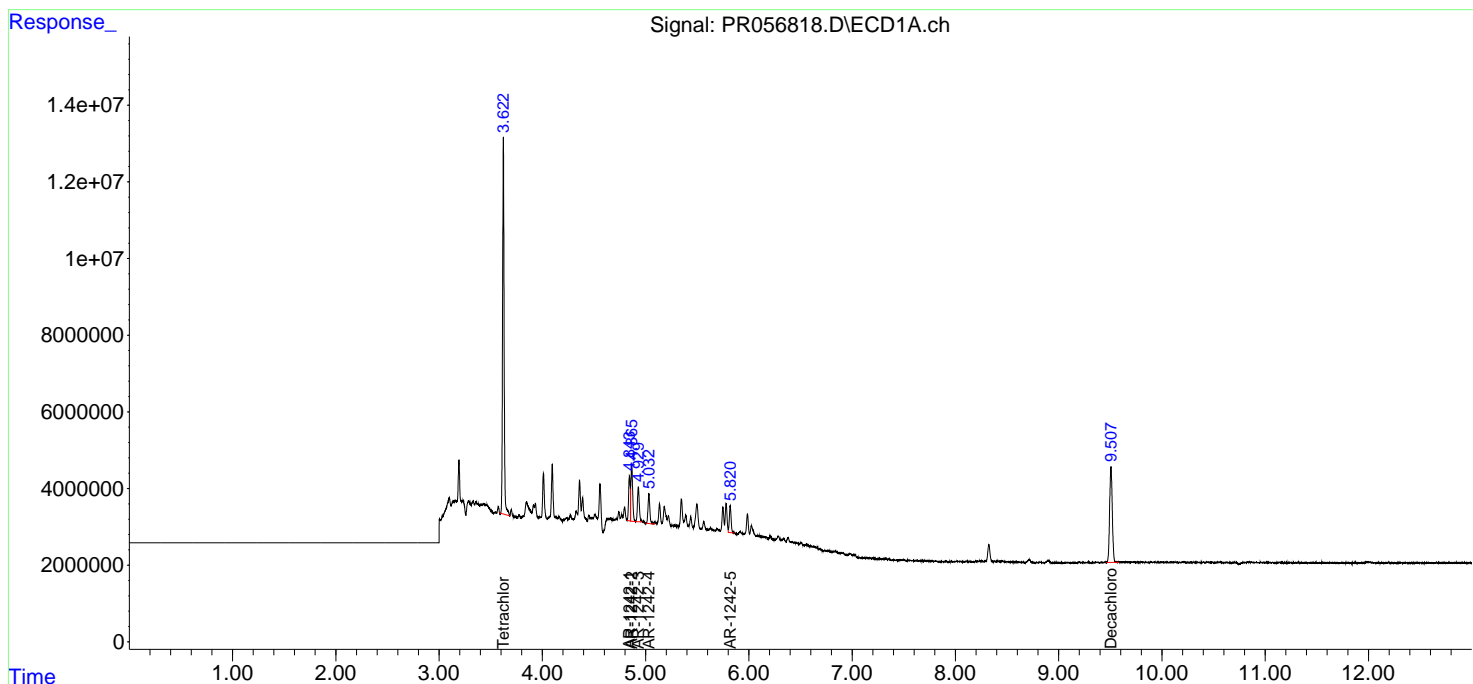
Instrument :
ECD_R
ClientSampleId :
JC-520

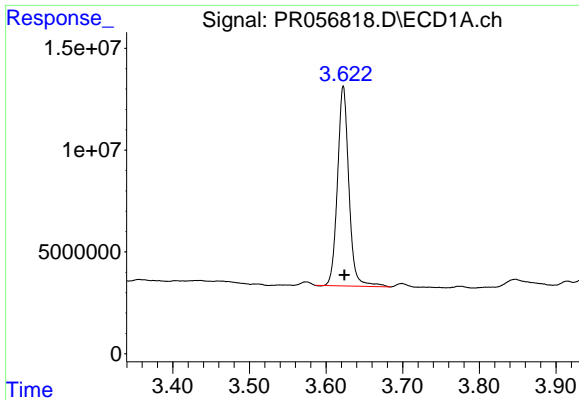
Manual Integrations
APPROVED

Reviewed By :Yogesh Patel 09/20/2022
Supervised By :Ankita Jodhani 09/20/2022

Integration File signal 1: autoint1.e
Integration File signal 2: autoint2.e
Quant Time: Sep 20 02:54:14 2022
Quant Method : Z:\pestpcbsrv\HPCHEM1\ECD_R\Method\PR090722.M
Quant Title : GC EXTRACTABLES
QLast Update : Wed Sep 07 09:20:17 2022
Response via : Initial Calibration
Integrator: ChemStation

Volume Inj. : 2 µl
Signal #1 Phase : ZB-MR1 Signal #2 Phase: ZB-MR2
Signal #1 Info : 30Mx0.32mmx 0.50µ Signal #2 Info : 30M x 0.32mm x 0.25µm





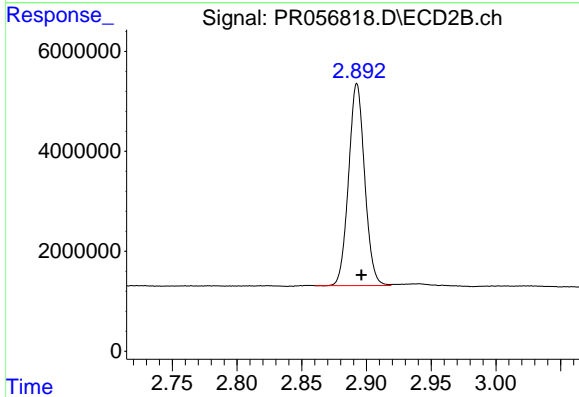
#1 Tetrachloro-m-xylene

R.T.: 3.623 min
 Delta R.T.: -0.001 min
 Response: 101124665
 Conc: 21.05 ng/ml

Instrument :
 ECD_R
 ClientSampleId :
 JC-520

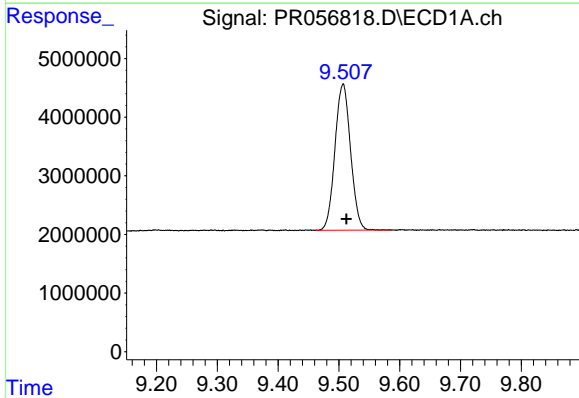
Manual Integrations
 APPROVED

Reviewed By :Yogesh Patel 09/20/2022
 Supervised By :Ankita Jodhani 09/20/2022



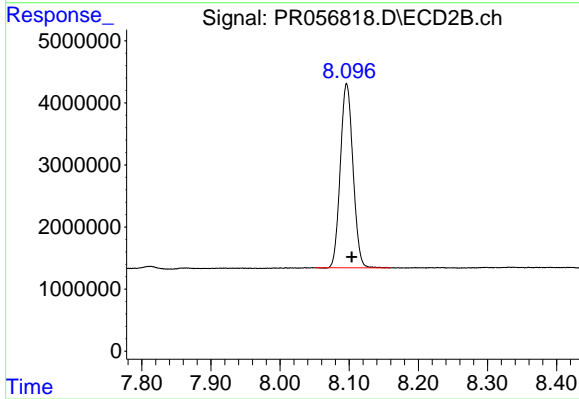
#1 Tetrachloro-m-xylene

R.T.: 2.893 min
 Delta R.T.: -0.003 min
 Response: 34921153
 Conc: 19.92 ng/ml



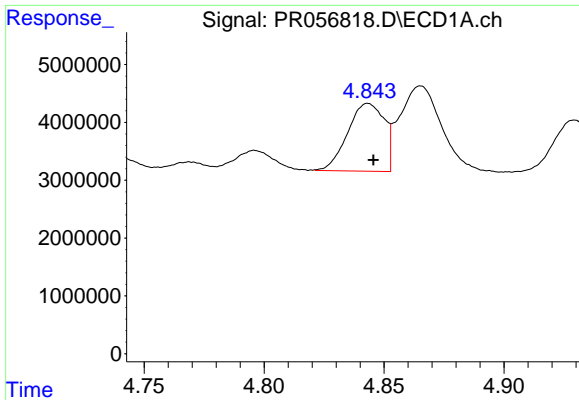
#2 Decachlorobiphenyl

R.T.: 9.507 min
 Delta R.T.: -0.006 min
 Response: 44457448
 Conc: 22.40 ng/ml



#2 Decachlorobiphenyl

R.T.: 8.096 min
 Delta R.T.: -0.007 min
 Response: 37701628
 Conc: 22.66 ng/ml



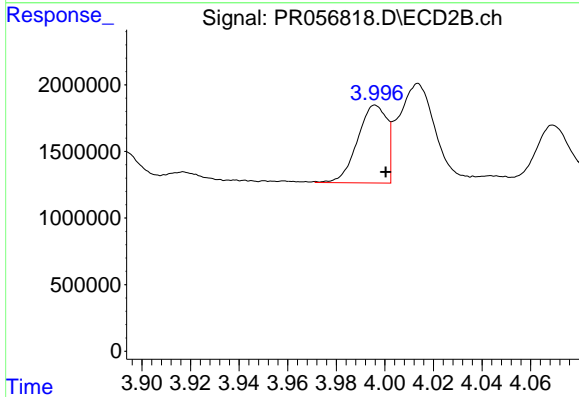
#16 AR-1242-1

R.T.: 4.843 min
 Delta R.T.: -0.003 min
 Response: 12685882
 Conc: 121.16 ng/ml

Instrument :
 ECD_R
 ClientSampleId :
 JC-520

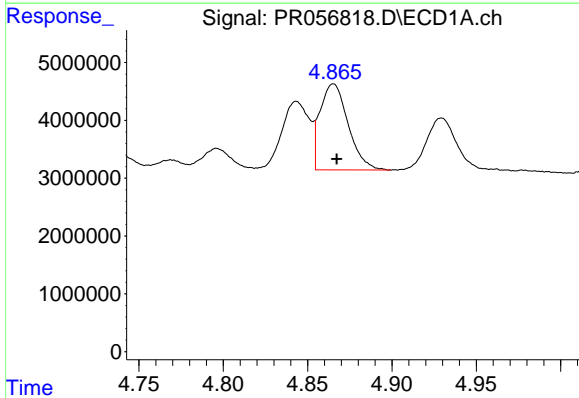
Manual Integrations
 APPROVED

Reviewed By :Yogesh Patel 09/20/2022
 Supervised By :Ankita Jodhani 09/20/2022



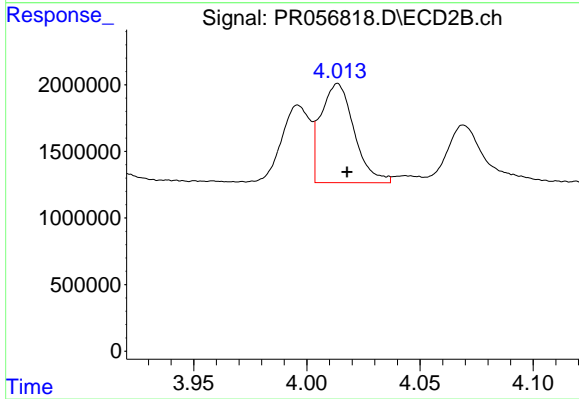
#16 AR-1242-1

R.T.: 3.996 min
 Delta R.T.: -0.005 min
 Response: 5007526
 Conc: 111.55 ng/ml m



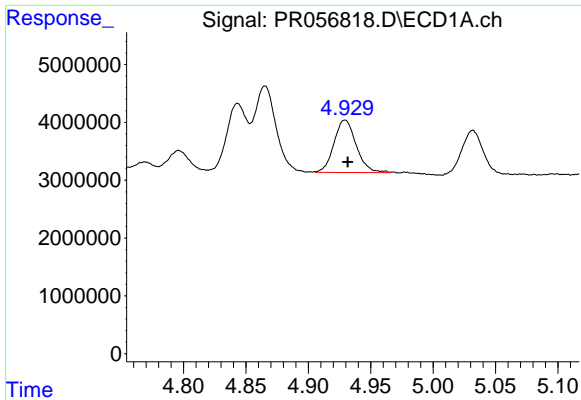
#17 AR-1242-2

R.T.: 4.865 min
 Delta R.T.: -0.003 min
 Response: 17026992
 Conc: 112.02 ng/ml m



#17 AR-1242-2

R.T.: 4.013 min
 Delta R.T.: -0.004 min
 Response: 7529143
 Conc: 114.03 ng/ml m



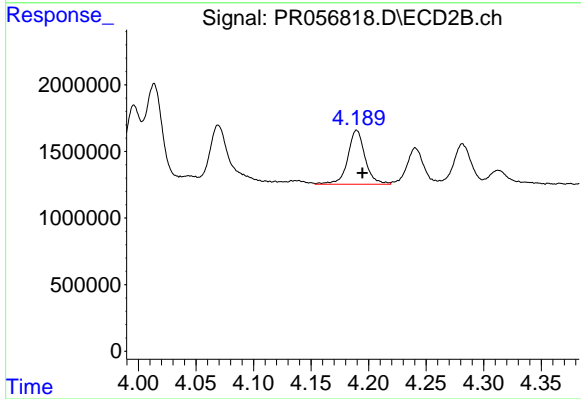
#18 AR-1242-3

R.T.: 4.929 min
 Delta R.T.: -0.003 min
 Response: 11229862
 Conc: 125.17 ng/ml

Instrument :
 ECD_R
 ClientSampleId :
 JC-520

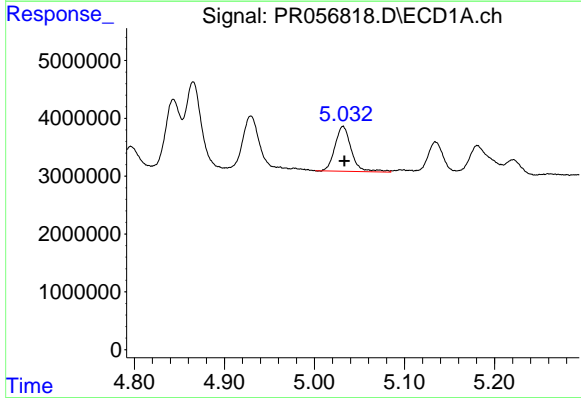
Manual Integrations
 APPROVED

Reviewed By :Yogesh Patel 09/20/2022
 Supervised By :Ankita Jodhani 09/20/2022



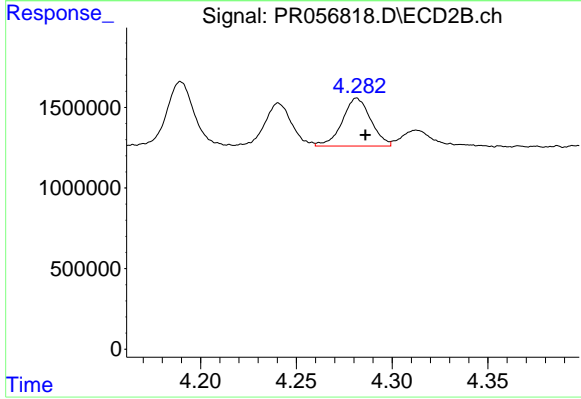
#18 AR-1242-3

R.T.: 4.189 min
 Delta R.T.: -0.005 min
 Response: 4240106
 Conc: 117.05 ng/ml m



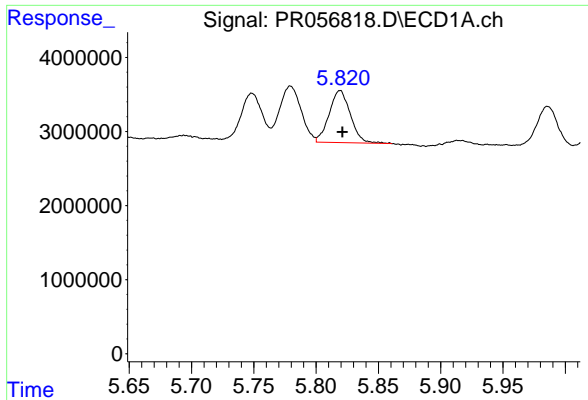
#19 AR-1242-4

R.T.: 5.032 min
 Delta R.T.: -0.002 min
 Response: 9761397
 Conc: 134.53 ng/ml



#19 AR-1242-4

R.T.: 4.282 min
 Delta R.T.: -0.005 min
 Response: 3099591
 Conc: 95.83 ng/ml m



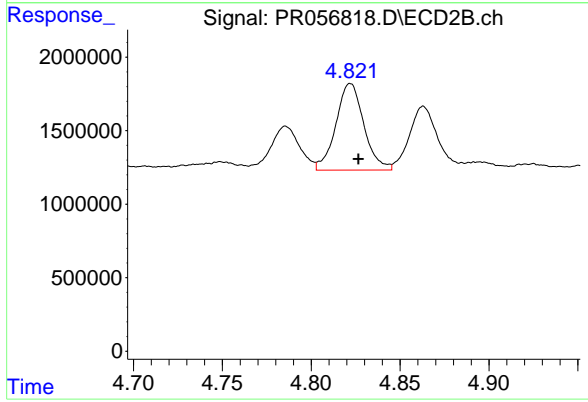
#20 AR-1242-5

R.T.: 5.819 min
 Delta R.T.: -0.002 min
 Response: 8205625
 Conc: 123.11 ng/ml

Instrument :
 ECD_R
 ClientSampleId :
 JC-520

Manual Integrations
 APPROVED

Reviewed By :Yogesh Patel 09/20/2022
 Supervised By :Ankita Jodhani 09/20/2022



#20 AR-1242-5

R.T.: 4.822 min
 Delta R.T.: -0.005 min
 Response: 6465173
 Conc: 154.50 ng/ml