

Data Path : Z:\pestpcbsrv\HPCHEM1\ECD\_R\Data\PR092118\  
 Data File : PR032222.D  
 Signal(s) : Signal #1: ECD1A.ch Signal #2: ECD2B.ch  
 Acq On : 21 Sep 2018 23:17  
 Operator : SM\SJ  
 Sample : J5019-08  
 Misc :  
 ALS Vial : 38 Sample Multiplier: 1

**Instrument :**  
 ECD\_R  
**ClientSampleId :**  
 091918-SIDI-E-D-S

**Manual Integrations**  
**APPROVED**

Sohil  
 9/24/2018 6:13:46 PM

Integration File signal 1: autoint1.e  
 Integration File signal 2: autoint2.e  
 Quant Time: Sep 22 03:32:58 2018  
 Quant Method : Z:\pestpcbsrv\HPCHEM1\ECD\_R\Method\PR091818.M  
 Quant Title : GC EXTRACTABLES  
 QLast Update : Wed Sep 19 03:49:43 2018  
 Response via : Initial Calibration  
 Integrator: ChemStation

Volume Inj. : 2 µl  
 Signal #1 Phase : ZB-MR1 Signal #2 Phase: ZB-MR2  
 Signal #1 Info : 30Mx0.32mmx 0.50µ Signal #2 Info : 30M x 0.32mm x 0.25µm

Compound	RT#1	RT#2	Resp#1	Resp#2	ng/ml	ng/ml
-----						
System Monitoring Compounds						
1) SA Tetrachlo...	4.513	3.644	386.4E6	669.1E6	19.438m	15.989m
2) SA Decachlor...	10.250	8.499	467.4E6	356.1E6	15.956	15.835

Target Compounds

(f)=RT Delta > 1/2 Window (#)=Amounts differ by > 25% (m)=manual int.

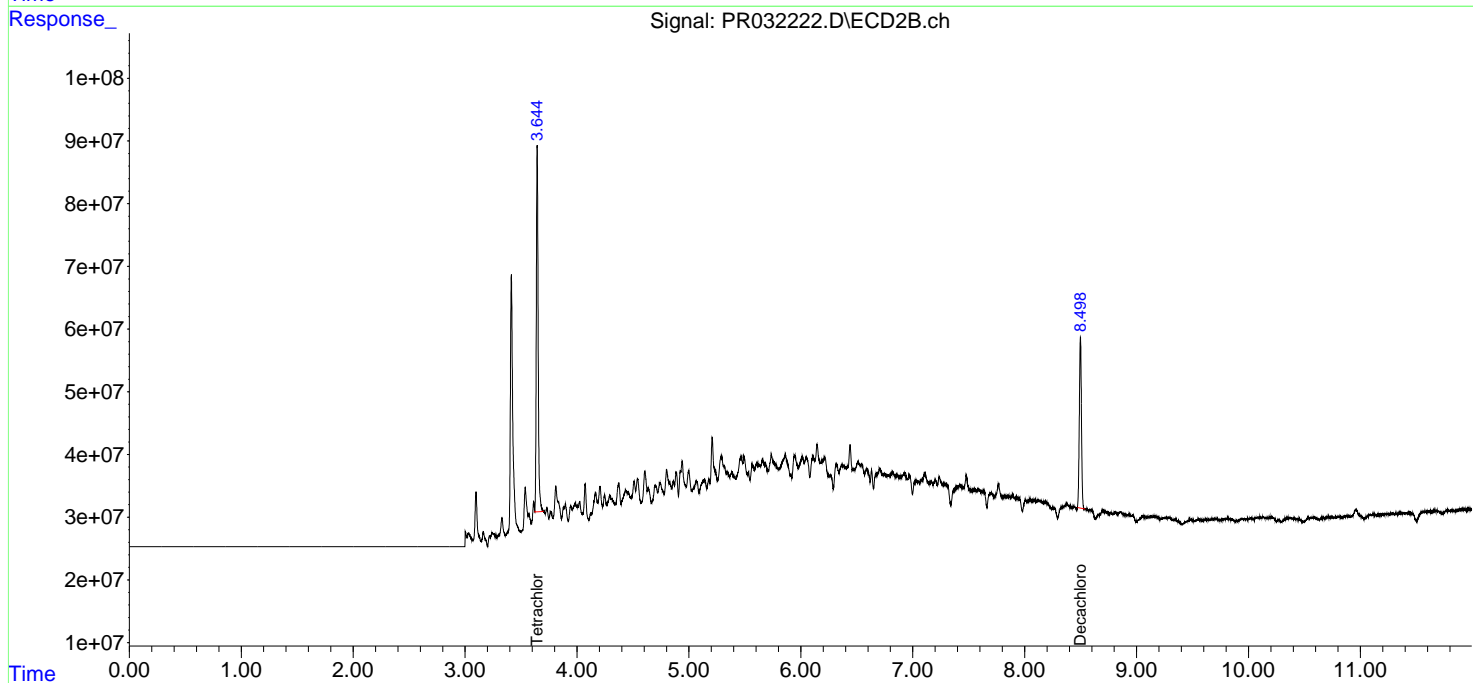
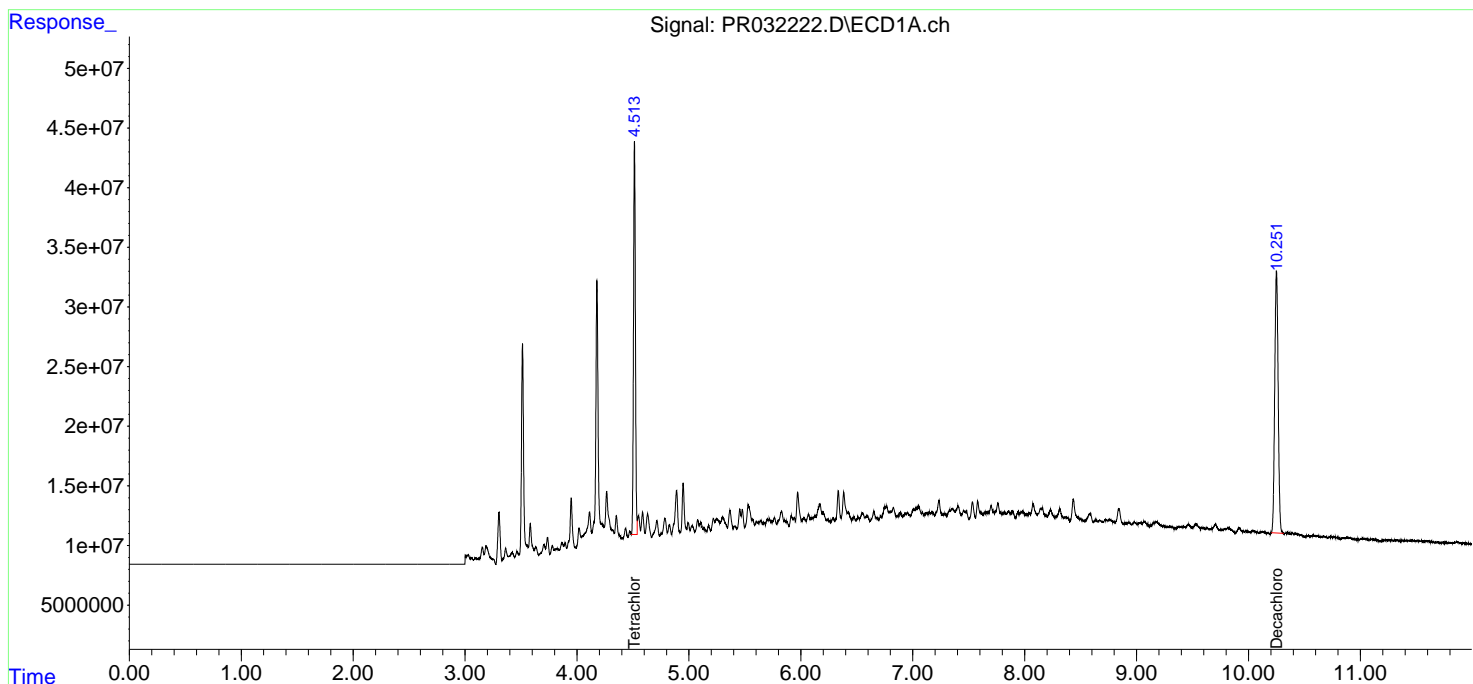
Data Path : Z:\pestpcbsrv\HPCHEM1\ECD\_R\Data\PR092118\  
 Data File : PR032222.D  
 Signal(s) : Signal #1: ECD1A.ch Signal #2: ECD2B.ch  
 Acq On : 21 Sep 2018 23:17  
 Operator : SM\SJ  
 Sample : J5019-08  
 Misc :  
 ALS Vial : 38 Sample Multiplier: 1

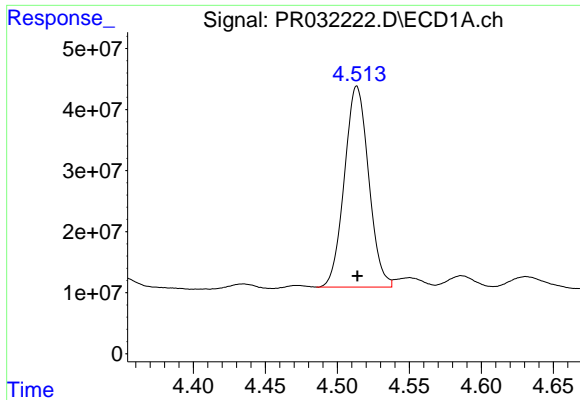
**Instrument :**  
 ECD\_R  
**ClientSampled :**  
 091918-SIDI-E-D-S

**Manual Integrations**  
**APPROVED**  
 Sohil  
 9/24/2018 6:13:46 PM

Integration File signal 1: autoint1.e  
 Integration File signal 2: autoint2.e  
 Quant Time: Sep 22 03:32:58 2018  
 Quant Method : Z:\pestpcbsrv\HPCHEM1\ECD\_R\Method\PR091818.M  
 Quant Title : GC EXTRACTABLES  
 QLast Update : Wed Sep 19 03:49:43 2018  
 Response via : Initial Calibration  
 Integrator: ChemStation

Volume Inj. : 2 µl  
 Signal #1 Phase : ZB-MR1 Signal #2 Phase: ZB-MR2  
 Signal #1 Info : 30Mx0.32mmx 0.50µ Signal #2 Info : 30M x 0.32mm x 0.25µm

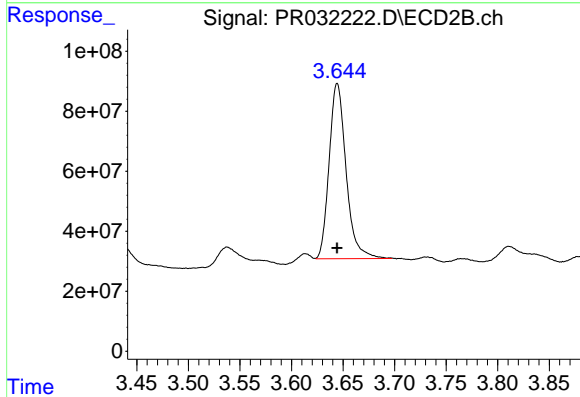




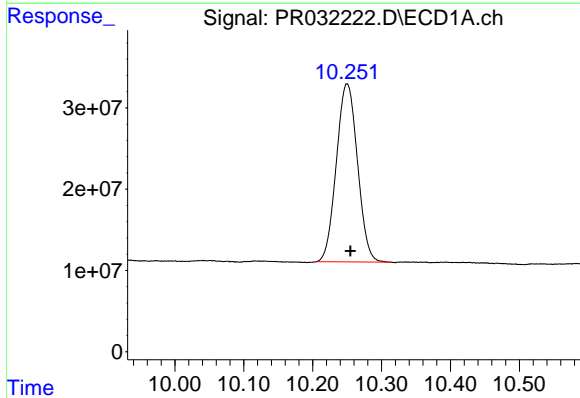
#1 Tetrachloro-m-xylene  
 R.T.: 4.513 min  
 Delta R.T.: 0.000 min  
 Response: 386445431  
 Conc: 19.44 ng/ml m

Instrument :  
 ECD\_R  
 ClientSampleId :  
 091918-SIDI-E-D-S

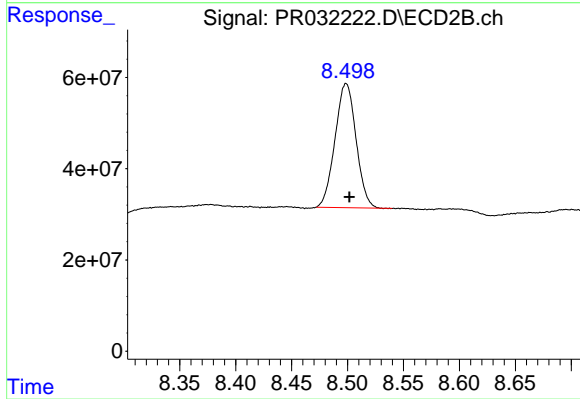
Manual Integrations  
 APPROVED  
 Sohil  
 9/24/2018 6:13:46 PM



#1 Tetrachloro-m-xylene  
 R.T.: 3.644 min  
 Delta R.T.: 0.000 min  
 Response: 669065988  
 Conc: 15.99 ng/ml m



#2 Decachlorobiphenyl  
 R.T.: 10.250 min  
 Delta R.T.: -0.005 min  
 Response: 467392531  
 Conc: 15.96 ng/ml



#2 Decachlorobiphenyl  
 R.T.: 8.499 min  
 Delta R.T.: -0.003 min  
 Response: 356072120  
 Conc: 15.83 ng/ml