

Data Path : Z:\pestpcbsrv\HPCHEM1\ECD_R\Data\PR092419\
 Data File : PR041463.D
 Signal(s) : Signal #1: ECD1A.ch Signal #2: ECD2B.ch
 Acq On : 24 Sep 2019 09:51
 Operator : SM\AJ
 Sample : AR1248CCC400
 Misc :
 ALS Vial : 5 Sample Multiplier: 1

Instrument :
 ECD_R
 ClientSampleId :
 AR1248342

Integration File signal 1: autoint1.e
 Integration File signal 2: autoint2.e
 Quant Time: Sep 25 01:28:50 2019
 Quant Method : Z:\pestpcbsrv\HPCHEM1\ECD_R\Method\PR092319CLP.M
 Quant Title : GC EXTRACTABLES
 QLast Update : Tue Sep 24 04:36:18 2019
 Response via : Initial Calibration
 Integrator: ChemStation

Volume Inj. : 1 µl
 Signal #1 Phase : ZB MR1 Signal #2 Phase: ZB MR2
 Signal #1 Info : 30Mx0.32mmx 0.5µm Signal #2 Info : 30M x 0.32mm x 0.25µm

Compound	RT#1	RT#2	Resp#1	Resp#2	ng/ml	ng/ml

System Monitoring Compounds						
1) SA Tetrachlo...	4.744	4.004	29971470	133.0E6	22.579	21.990
2) SA Decachlor...	10.670	9.126	127.5E6	379.7E6	39.955	35.196
Target Compounds						
3) L1 AR-1016-1	5.919	5.102	16740179	36030779	261.783	244.525
4) L1 AR-1016-2	5.943	5.122	19263576	38168130	211.543	185.389
5) L1 AR-1016-3	6.006	5.302	9598386	25289611	174.911	213.706
6) L1 AR-1016-4	6.105	5.340	10715109	52423196	223.397	538.137 #
7) L1 AR-1016-5	6.399	5.558	27213576	71641982	550.081	515.323
8) L2 AR-1221-1	0.000	4.213	0	984833	N.D.	17.182 #
9) L2 AR-1221-2	0.000	4.305	0	2250173	N.D.	64.523 #
10) L2 AR-1221-3	5.118	4.381	1729494	4682827	47.353	44.161
11) L3 AR-1232-1	5.118	4.381	1729494	4682827	59.297	58.096
12) L3 AR-1232-2	5.652	5.122	6356377	38168130	388.533	392.455
13) L3 AR-1232-3	5.943	5.302	19263576	25289611	508.110	563.198
14) L3 AR-1232-4	6.105	5.384	10715109	54904269	580.712	1310.791 #
15) L3 AR-1232-5	6.192	5.558	23644169	71641982	1711.153	1339.250
16) L4 AR-1242-1	5.919	5.102	16740179	36030779	325.454	321.326
17) L4 AR-1242-2	5.943	5.122	19263576	38168130	264.301	238.717
18) L4 AR-1242-3	6.006	5.302	9598386	25289611	217.075	278.808 #
19) L4 AR-1242-4	6.105	5.384	10715109	54904269	292.088	583.434 #
20) L4 AR-1242-5	6.842	5.910	33016032	126.6E6	644.113	746.329
21) L5 AR-1248-1	5.919	5.102	16740179	36030779	456.064	427.473
22) L5 AR-1248-2	6.192	5.340	23644169	52423196	429.249	431.010
23) L5 AR-1248-3	6.399	5.384	27213576	54904269	423.820	433.072
24) L5 AR-1248-4	6.803	5.558	34502415	71641982	404.280	426.830
25) L5 AR-1248-5	6.842	5.953	33016032	89932712	405.181	413.043
26) L6 AR-1254-1	6.775	5.910	25837547	126.6E6	310.484	390.397 #
27) L6 AR-1254-2	7.000	6.058	34714764	40271537	247.054	131.820 #
28) L6 AR-1254-3	7.362	6.466	19977800	65750152	117.907	117.503
29) L6 AR-1254-4	7.647	6.694	14862301	55666025	109.488	130.440
30) L6 AR-1254-5	8.067	7.113	4497595	14223412	29.249	24.586
31) L7 AR-1260-1	7.526	6.585	2965347	14974681	25.041	38.447 #
32) L7 AR-1260-2	7.776	6.782	3808894	10491406	25.811	19.461
33) L7 AR-1260-3	8.138	6.939	1169260	10918785	10.082	23.375 #
34) L7 AR-1260-4	8.372	7.413	2121002	2209990	14.855	5.214 #
35) L7 AR-1260-5	8.719	7.652	1477486	7134783	4.796	5.857
36) L8 AR-1262-1	8.138f	7.113	1169260	14223412	15.181	42.495 #
37) L8 AR-1262-2	8.719	7.652	1477486	7134783	3.897	5.167 #
38) L8 AR-1262-3	0.000	7.940	0	1783308	N.D.	3.118 #
39) L8 AR-1262-4	0.000	8.003	0	3632075	N.D.	3.584 #
40) L8 AR-1262-5	0.000	8.523	0	1722429	N.D.	3.077 #
41) L9 AR-1268-1	0.000	7.940	0	1783308	N.D.	1.054 #

Data Path : Z:\pestpcbsrv\HPCHEM1\ECD_R\Data\PR092419\
 Data File : PR041463.D
 Signal(s) : Signal #1: ECD1A.ch Signal #2: ECD2B.ch
 Acq On : 24 Sep 2019 09:51
 Operator : SM\AJ
 Sample : AR1248CCC400
 Misc :
 ALS Vial : 5 Sample Multiplier: 1

Instrument :
 ECD_R
 ClientSampleId :
 AR1248342

Integration File signal 1: autoint1.e
 Integration File signal 2: autoint2.e
 Quant Time: Sep 25 01:28:50 2019
 Quant Method : Z:\pestpcbsrv\HPCHEM1\ECD_R\Method\PR092319CLP.M
 Quant Title : GC EXTRACTABLES
 QLast Update : Tue Sep 24 04:36:18 2019
 Response via : Initial Calibration
 Integrator: ChemStation

Volume Inj. : 1 µl
 Signal #1 Phase : ZB MR1 Signal #2 Phase: ZB MR2
 Signal #1 Info : 30Mx0.32mmx 0.5µm Signal #2 Info : 30M x 0.32mm x 0.25µm

	Compound	RT#1	RT#2	Resp#1	Resp#2	ng/ml	ng/ml
42)	L9 AR-1268-2	0.000	8.003	0	3632075	N.D.	2.322 #
43)	L9 AR-1268-3	0.000	8.218	0	1970109	N.D.	1.489 #
44)	L9 AR-1268-4	0.000	8.523	0	1722429	N.D.	2.870 #
45)	L9 AR-1268-5	10.309	8.842	1322832	3324406	0.935	0.754

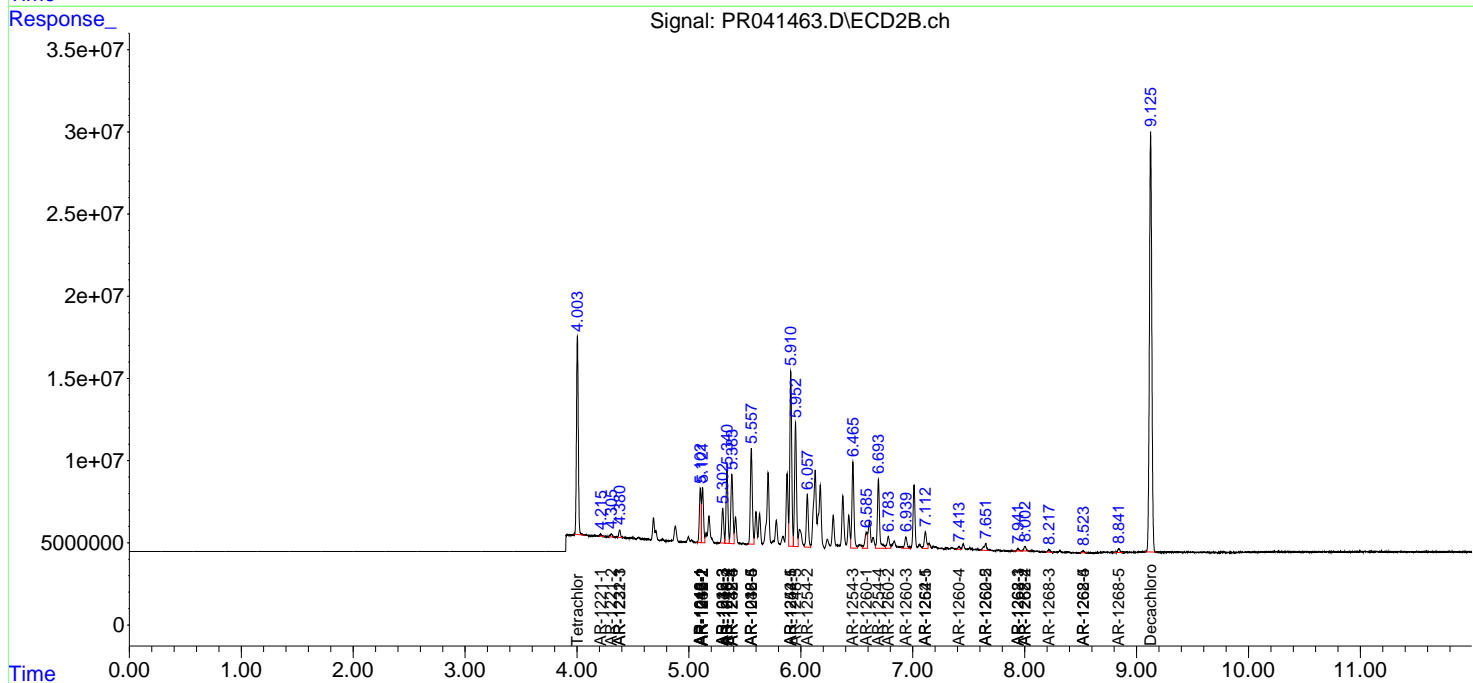
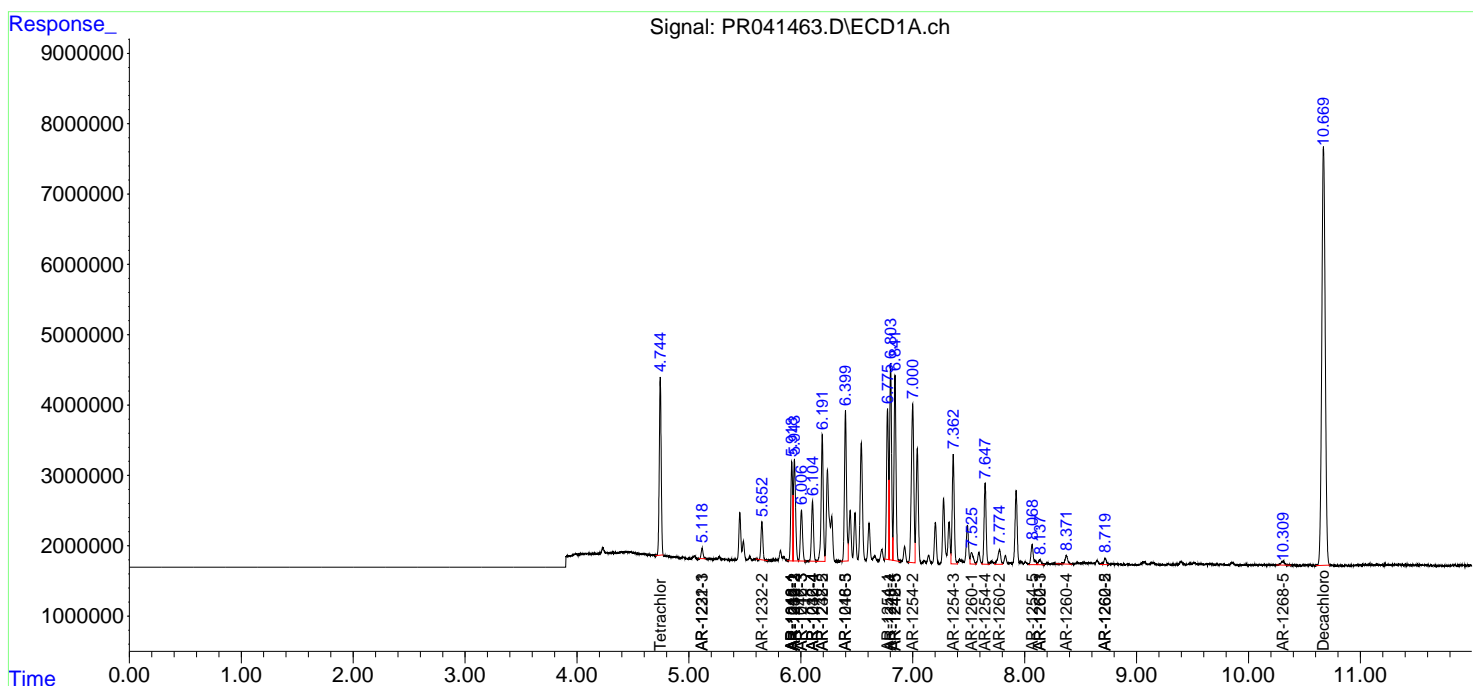
(f)=RT Delta > 1/2 Window (#)=Amounts differ by > 25% (m)=manual int.

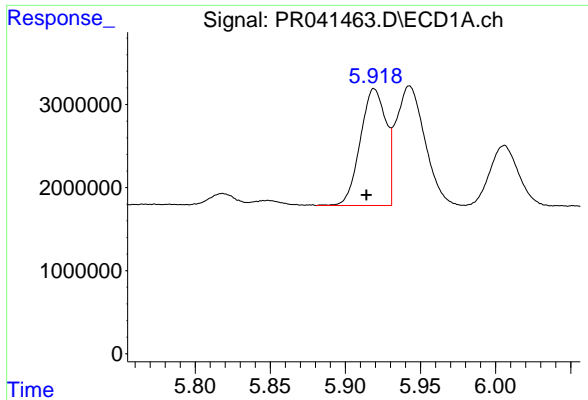
Data Path : Z:\pestpcbsrv\HPCHEM1\ECD_R\Data\PR092419\
 Data File : PR041463.D
 Signal(s) : Signal #1: ECD1A.ch Signal #2: ECD2B.ch
 Acq On : 24 Sep 2019 09:51
 Operator : SM\AJ
 Sample : AR1248CCC400
 Misc :
 ALS Vial : 5 Sample Multiplier: 1

Instrument :
 ECD_R
 ClientSampled :
 AR1248342

Integration File signal 1: autoint1.e
 Integration File signal 2: autoint2.e
 Quant Time: Sep 25 01:28:50 2019
 Quant Method : Z:\pestpcbsrv\HPCHEM1\ECD_R\Method\PR092319CLP.M
 Quant Title : GC EXTRACTABLES
 QLast Update : Tue Sep 24 04:36:18 2019
 Response via : Initial Calibration
 Integrator: ChemStation

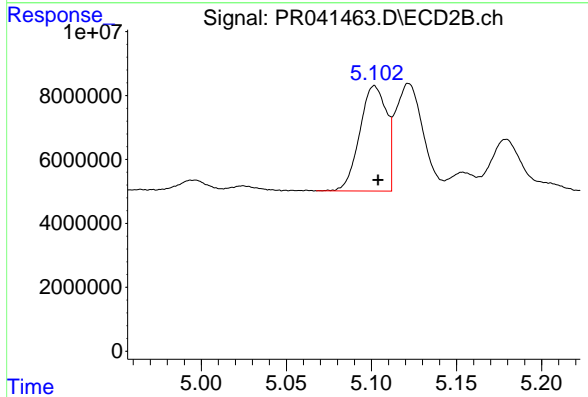
Volume Inj. : 1 µl
 Signal #1 Phase : ZB MR1 Signal #2 Phase: ZB MR2
 Signal #1 Info : 30Mx0.32mmx 0.5µm Signal #2 Info : 30M x 0.32mm x 0.25µm



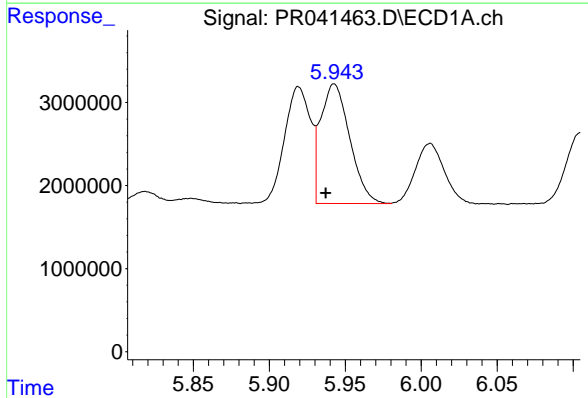


#3 AR-1016-1
 R.T.: 5.919 min
 Delta R.T.: 0.005 min
 Response: 16740179
 Conc: 261.78 ng/ml

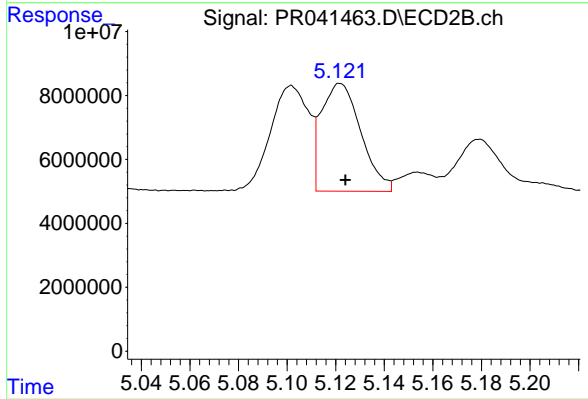
Instrument :
 ECD_R
ClientSampleId :
 AR1248342



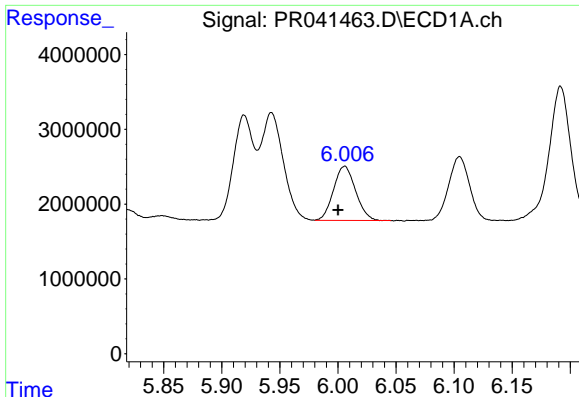
#3 AR-1016-1
 R.T.: 5.102 min
 Delta R.T.: -0.002 min
 Response: 36030779
 Conc: 244.53 ng/ml



#4 AR-1016-2
 R.T.: 5.943 min
 Delta R.T.: 0.005 min
 Response: 19263576
 Conc: 211.54 ng/ml



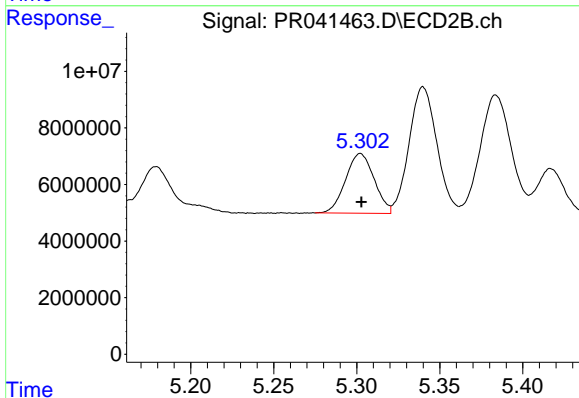
#4 AR-1016-2
 R.T.: 5.122 min
 Delta R.T.: -0.002 min
 Response: 38168130
 Conc: 185.39 ng/ml



#5 AR-1016-3

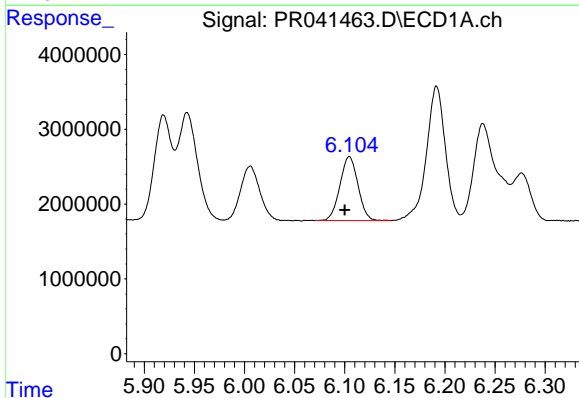
R.T.: 6.006 min
 Delta R.T.: 0.006 min
 Response: 9598386
 Conc: 174.91 ng/ml

Instrument :
 ECD_R
 ClientSampleId :
 AR1248342



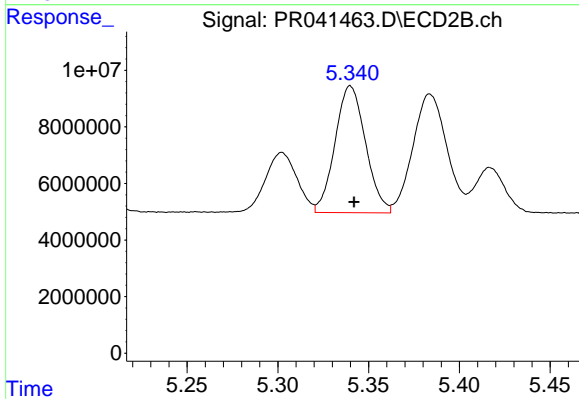
#5 AR-1016-3

R.T.: 5.302 min
 Delta R.T.: 0.000 min
 Response: 25289611
 Conc: 213.71 ng/ml



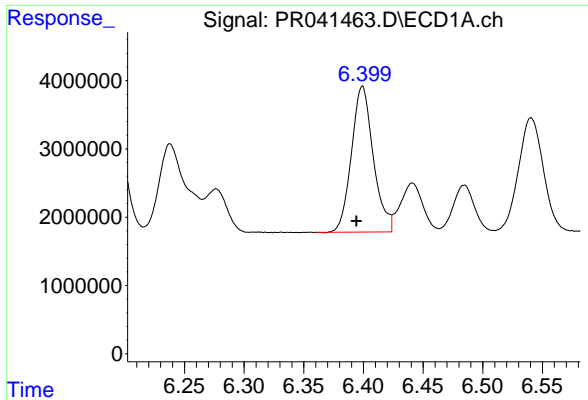
#6 AR-1016-4

R.T.: 6.105 min
 Delta R.T.: 0.005 min
 Response: 10715109
 Conc: 223.40 ng/ml



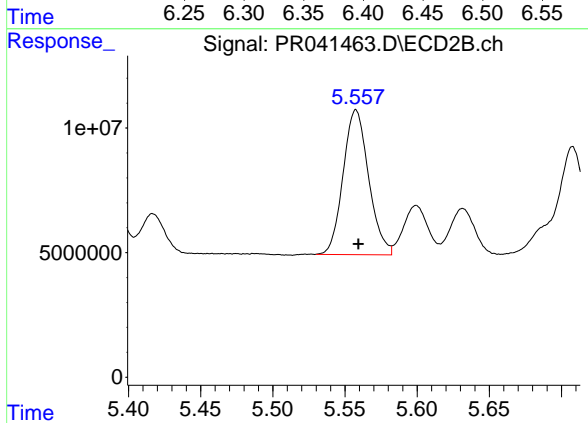
#6 AR-1016-4

R.T.: 5.340 min
 Delta R.T.: -0.002 min
 Response: 52423196
 Conc: 538.14 ng/ml

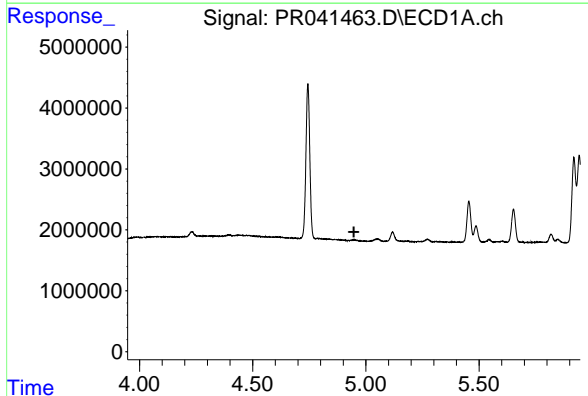


#7 AR-1016-5
 R.T.: 6.399 min
 Delta R.T.: 0.005 min
 Response: 27213576
 Conc: 550.08 ng/ml

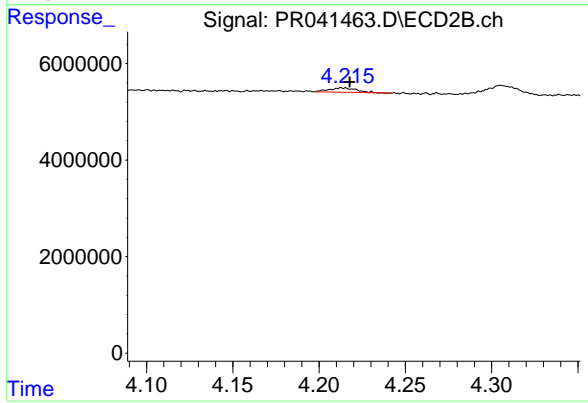
Instrument :
 ECD_R
 ClientSampleId :
 AR1248342



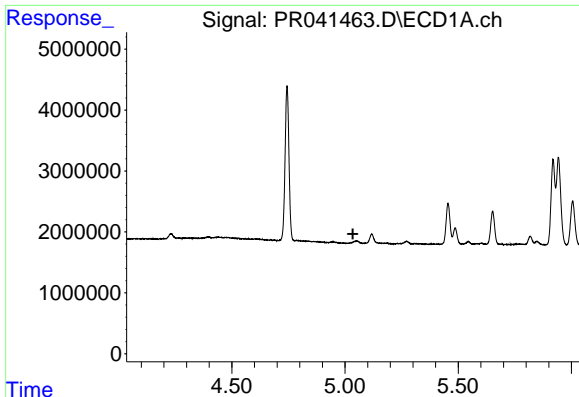
#7 AR-1016-5
 R.T.: 5.558 min
 Delta R.T.: -0.002 min
 Response: 71641982
 Conc: 515.32 ng/ml



#8 AR-1221-1
 R.T.: 0.000 min
 Exp R.T. : 4.947 min
 Response: 0
 Conc: N.D.



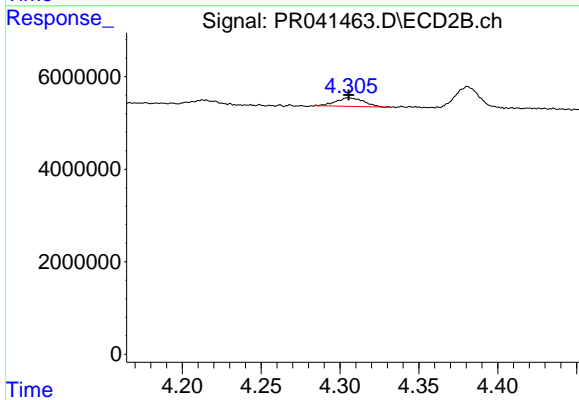
#8 AR-1221-1
 R.T.: 4.213 min
 Delta R.T.: -0.004 min
 Response: 984833
 Conc: 17.18 ng/ml



#9 AR-1221-2

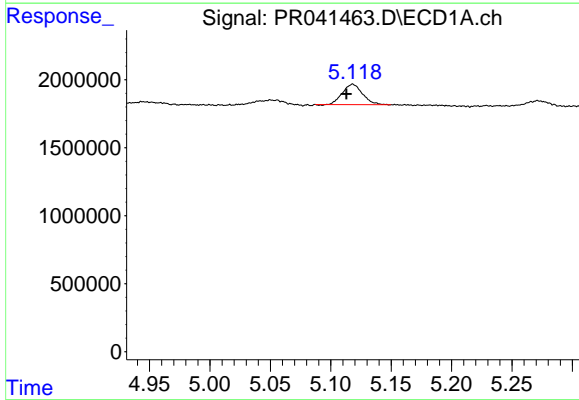
R.T.: 0.000 min
 Exp R.T.: 5.035 min
 Response: 0
 Conc: N.D.

Instrument :
 ECD_R
 ClientSampleId :
 AR1248342



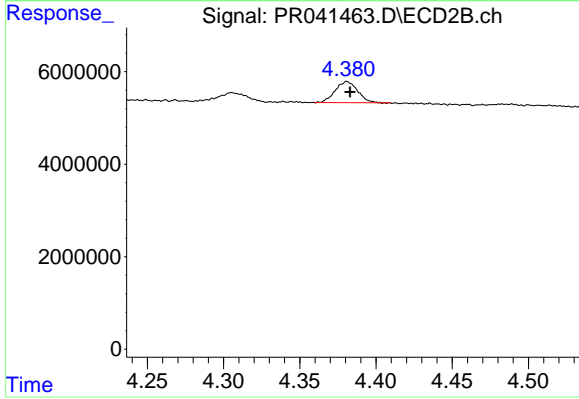
#9 AR-1221-2

R.T.: 4.305 min
 Delta R.T.: 0.000 min
 Response: 2250173
 Conc: 64.52 ng/ml



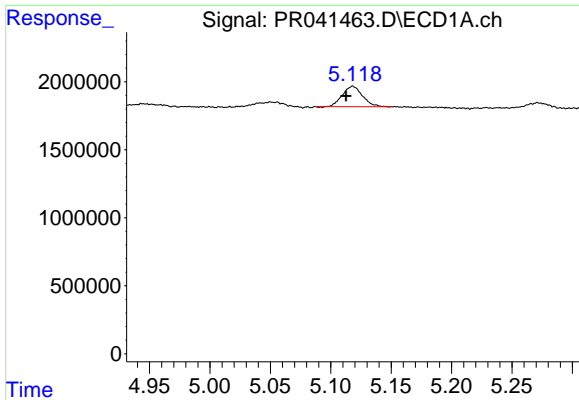
#10 AR-1221-3

R.T.: 5.118 min
 Delta R.T.: 0.005 min
 Response: 1729494
 Conc: 47.35 ng/ml



#10 AR-1221-3

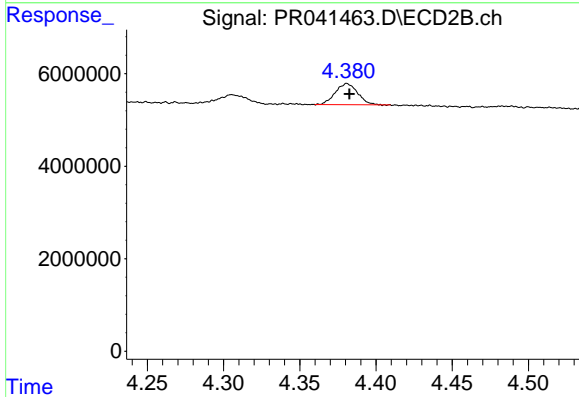
R.T.: 4.381 min
 Delta R.T.: -0.002 min
 Response: 4682827
 Conc: 44.16 ng/ml



#11 AR-1232-1

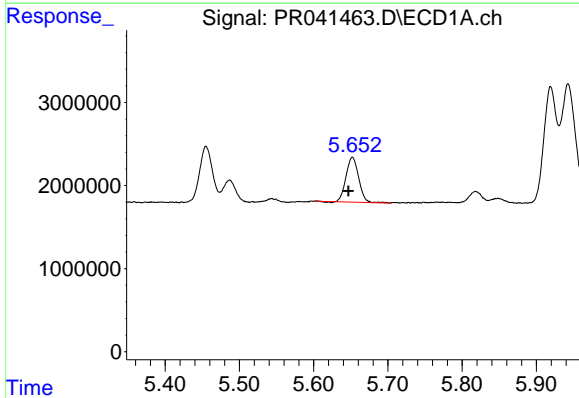
R.T.: 5.118 min
 Delta R.T.: 0.005 min
 Response: 1729494
 Conc: 59.30 ng/ml

Instrument :
 ECD_R
 ClientSampleId :
 AR1248342



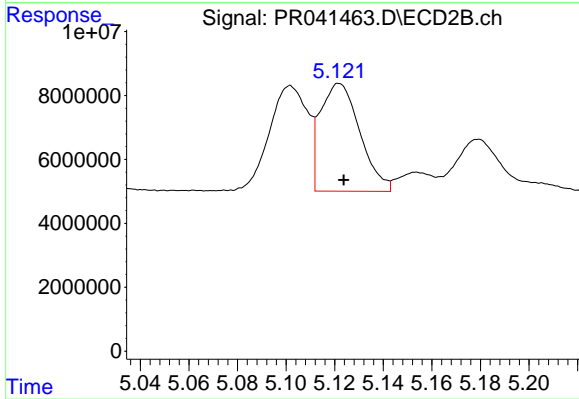
#11 AR-1232-1

R.T.: 4.381 min
 Delta R.T.: -0.002 min
 Response: 4682827
 Conc: 58.10 ng/ml



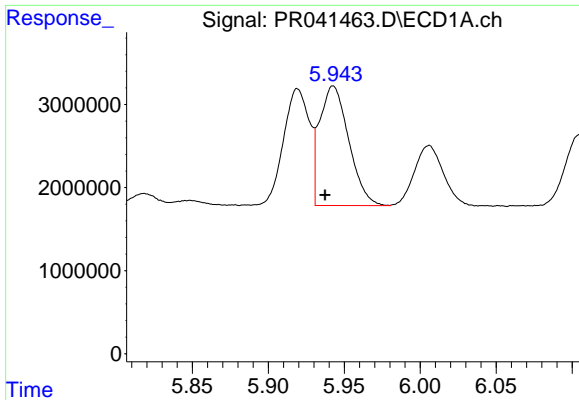
#12 AR-1232-2

R.T.: 5.652 min
 Delta R.T.: 0.005 min
 Response: 6356377
 Conc: 388.53 ng/ml



#12 AR-1232-2

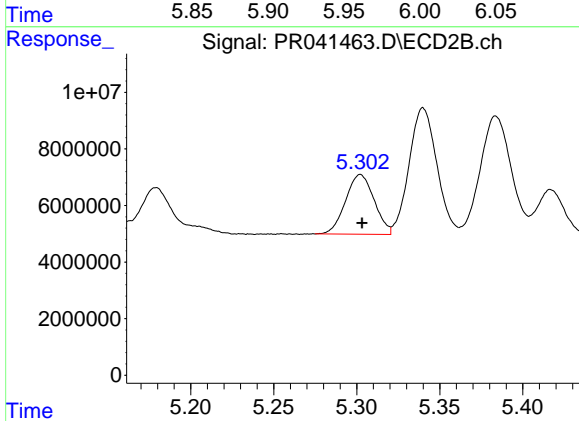
R.T.: 5.122 min
 Delta R.T.: -0.002 min
 Response: 38168130
 Conc: 392.45 ng/ml



#13 AR-1232-3

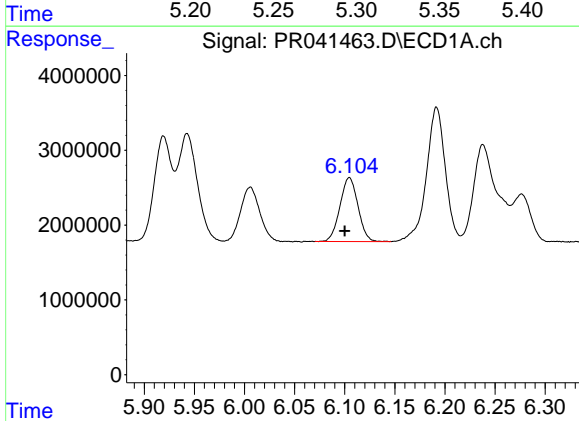
R.T.: 5.943 min
 Delta R.T.: 0.005 min
 Response: 19263576
 Conc: 508.11 ng/ml

Instrument :
 ECD_R
ClientSampleId :
 AR1248342



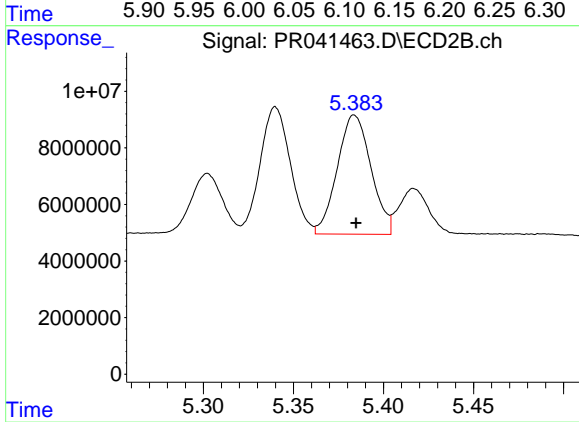
#13 AR-1232-3

R.T.: 5.302 min
 Delta R.T.: 0.000 min
 Response: 25289611
 Conc: 563.20 ng/ml



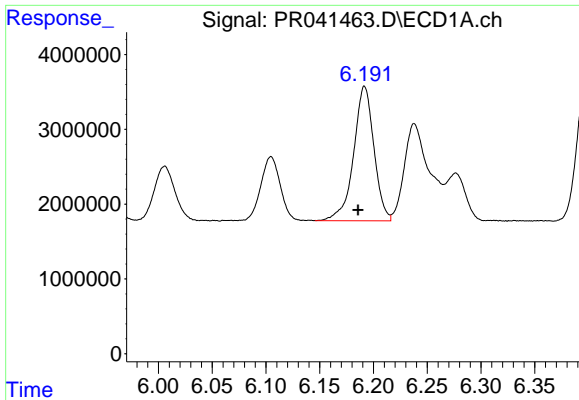
#14 AR-1232-4

R.T.: 6.105 min
 Delta R.T.: 0.005 min
 Response: 10715109
 Conc: 580.71 ng/ml



#14 AR-1232-4

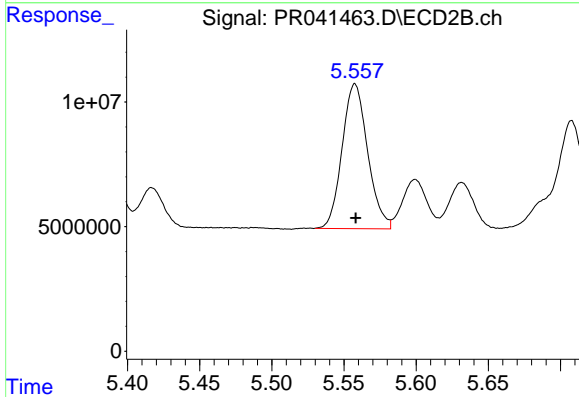
R.T.: 5.384 min
 Delta R.T.: -0.001 min
 Response: 54904269
 Conc: 1310.79 ng/ml



#15 AR-1232-5

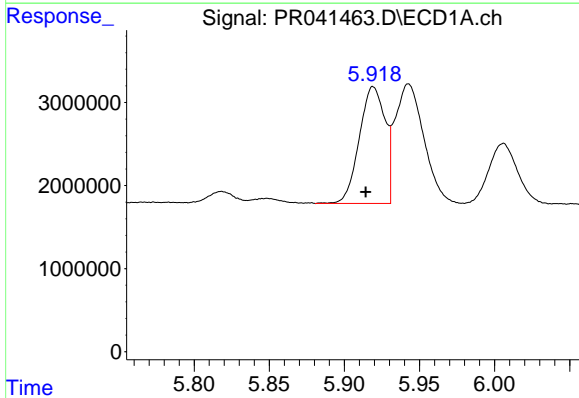
R.T.: 6.192 min
 Delta R.T.: 0.006 min
 Response: 23644169
 Conc: 1711.15 ng/ml

Instrument :
 ECD_R
 ClientSampleId :
 AR1248342



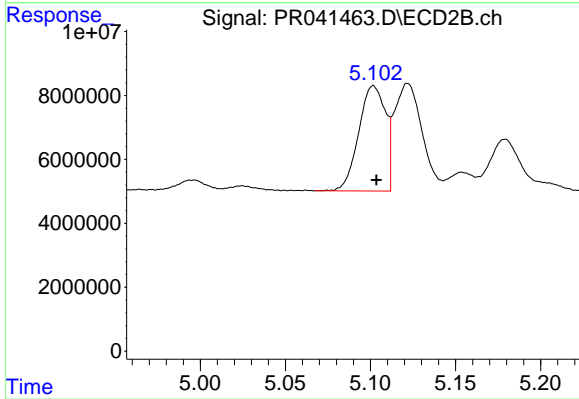
#15 AR-1232-5

R.T.: 5.558 min
 Delta R.T.: 0.000 min
 Response: 71641982
 Conc: 1339.25 ng/ml



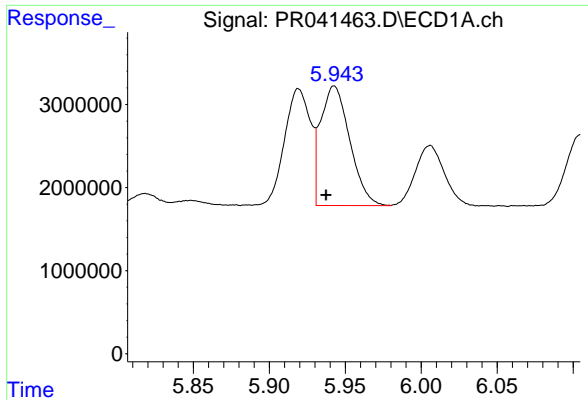
#16 AR-1242-1

R.T.: 5.919 min
 Delta R.T.: 0.005 min
 Response: 16740179
 Conc: 325.45 ng/ml



#16 AR-1242-1

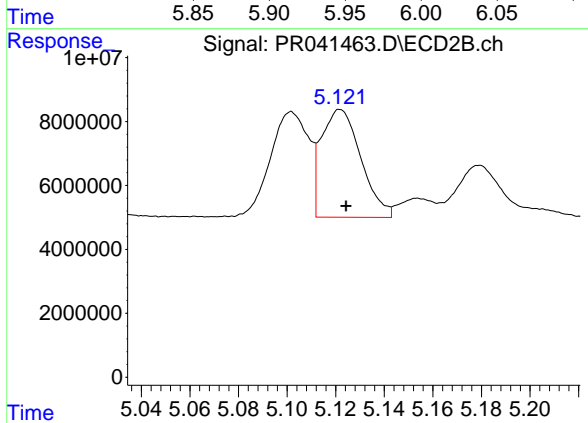
R.T.: 5.102 min
 Delta R.T.: -0.002 min
 Response: 36030779
 Conc: 321.33 ng/ml



#17 AR-1242-2

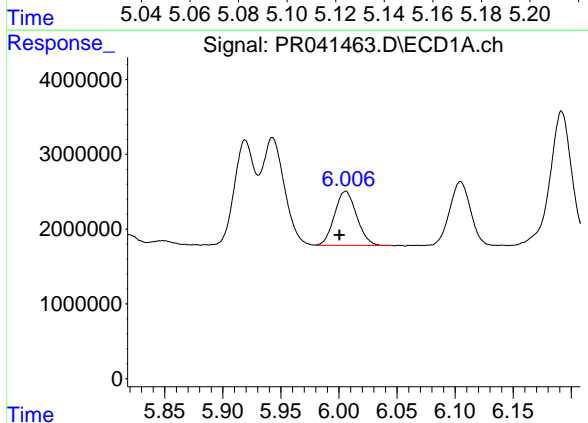
R.T.: 5.943 min
 Delta R.T.: 0.005 min
 Response: 19263576
 Conc: 264.30 ng/ml

Instrument :
 ECD_R
 ClientSampleId :
 AR1248342



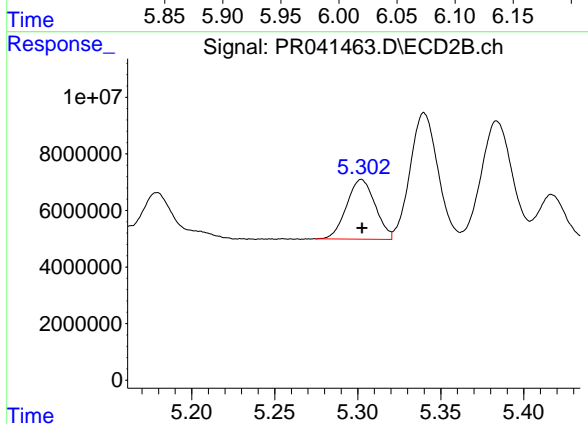
#17 AR-1242-2

R.T.: 5.122 min
 Delta R.T.: -0.002 min
 Response: 38168130
 Conc: 238.72 ng/ml



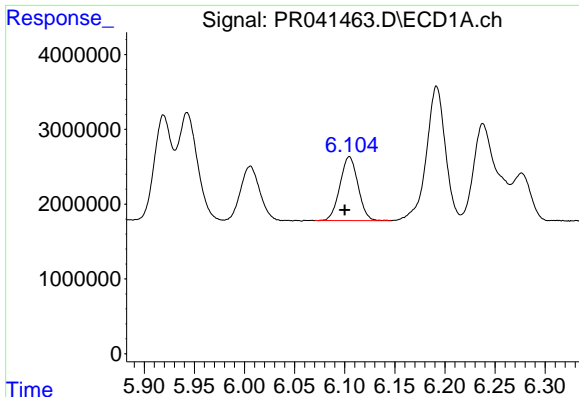
#18 AR-1242-3

R.T.: 6.006 min
 Delta R.T.: 0.005 min
 Response: 9598386
 Conc: 217.07 ng/ml



#18 AR-1242-3

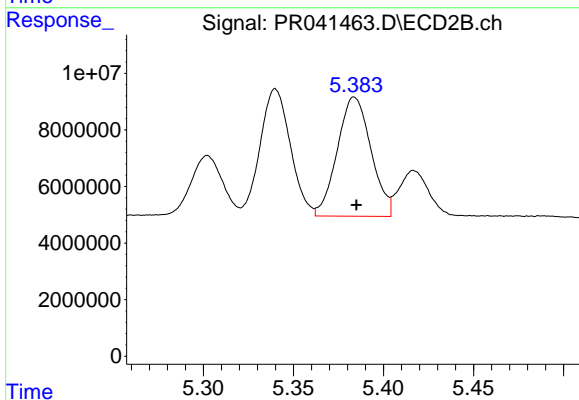
R.T.: 5.302 min
 Delta R.T.: 0.000 min
 Response: 25289611
 Conc: 278.81 ng/ml



#19 AR-1242-4

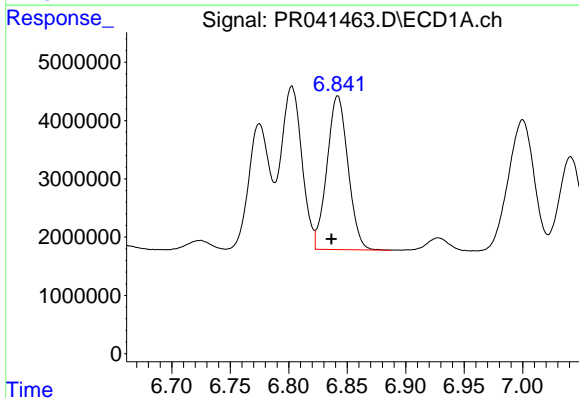
R.T.: 6.105 min
Delta R.T.: 0.005 min
Response: 10715109
Conc: 292.09 ng/ml

Instrument :
ECD_R
ClientSampleId :
AR1248342



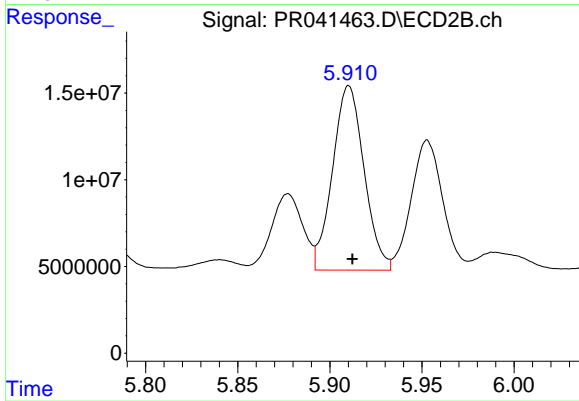
#19 AR-1242-4

R.T.: 5.384 min
Delta R.T.: -0.001 min
Response: 54904269
Conc: 583.43 ng/ml



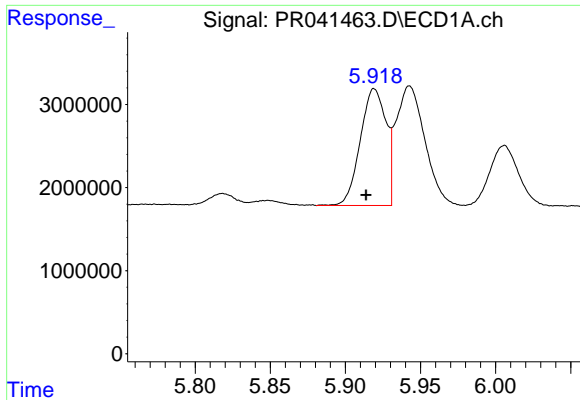
#20 AR-1242-5

R.T.: 6.842 min
Delta R.T.: 0.005 min
Response: 33016032
Conc: 644.11 ng/ml



#20 AR-1242-5

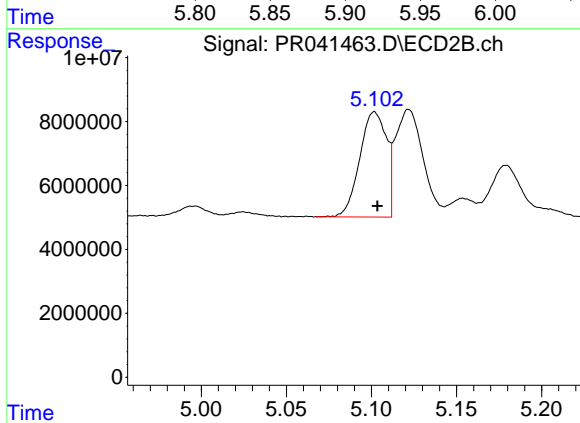
R.T.: 5.910 min
Delta R.T.: -0.002 min
Response: 126605639
Conc: 746.33 ng/ml



#21 AR-1248-1

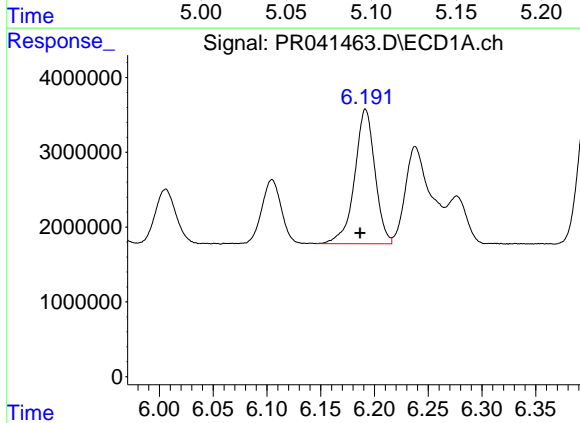
R.T.: 5.919 min
 Delta R.T.: 0.006 min
 Response: 16740179
 Conc: 456.06 ng/ml

Instrument :
 ECD_R
 ClientSampleId :
 AR1248342



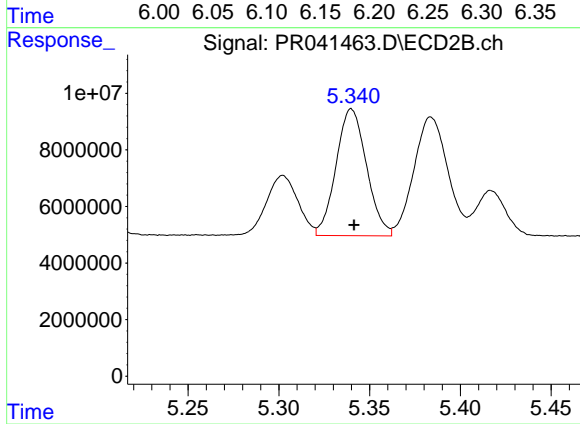
#21 AR-1248-1

R.T.: 5.102 min
 Delta R.T.: -0.002 min
 Response: 36030779
 Conc: 427.47 ng/ml



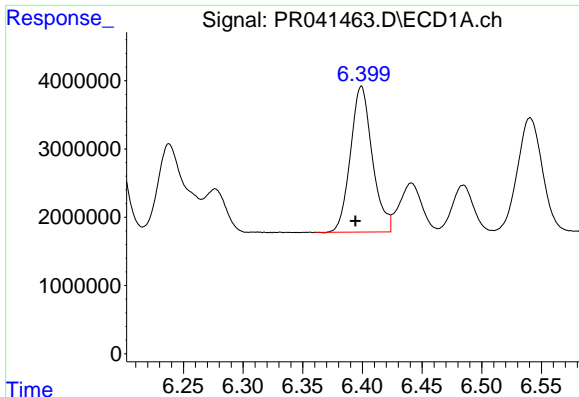
#22 AR-1248-2

R.T.: 6.192 min
 Delta R.T.: 0.005 min
 Response: 23644169
 Conc: 429.25 ng/ml



#22 AR-1248-2

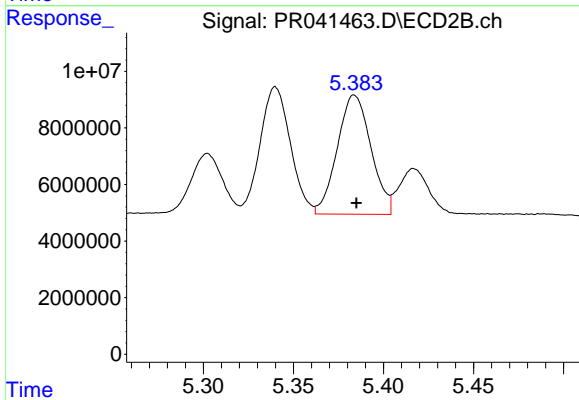
R.T.: 5.340 min
 Delta R.T.: -0.002 min
 Response: 52423196
 Conc: 431.01 ng/ml



#23 AR-1248-3

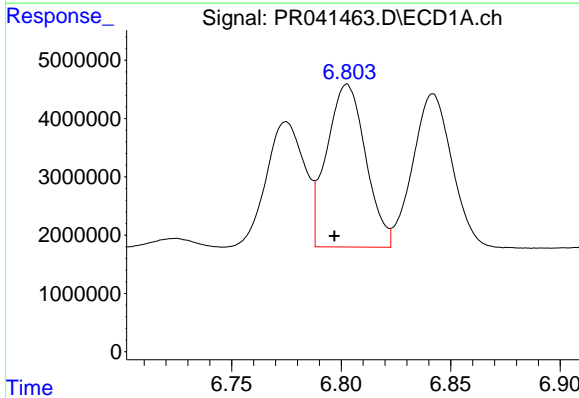
R.T.: 6.399 min
Delta R.T.: 0.005 min
Response: 27213576
Conc: 423.82 ng/ml

Instrument :
ECD_R
ClientSampleId :
AR1248342



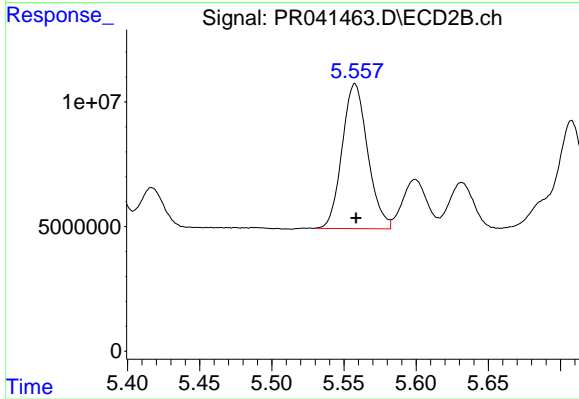
#23 AR-1248-3

R.T.: 5.384 min
Delta R.T.: -0.001 min
Response: 54904269
Conc: 433.07 ng/ml



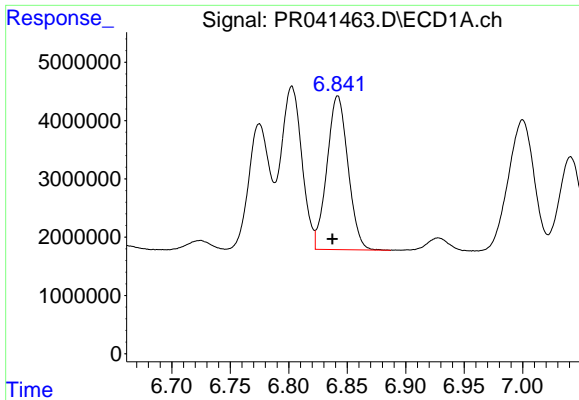
#24 AR-1248-4

R.T.: 6.803 min
Delta R.T.: 0.006 min
Response: 34502415
Conc: 404.28 ng/ml



#24 AR-1248-4

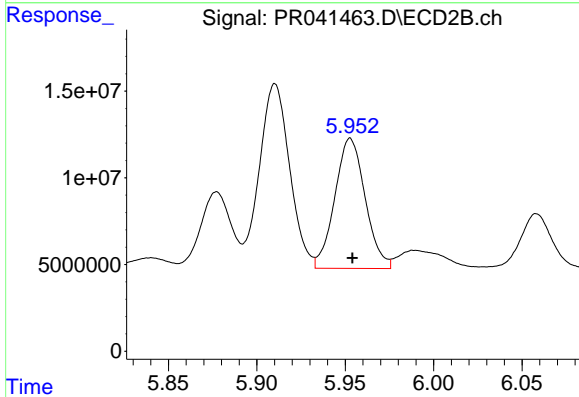
R.T.: 5.558 min
Delta R.T.: 0.000 min
Response: 71641982
Conc: 426.83 ng/ml



#25 AR-1248-5

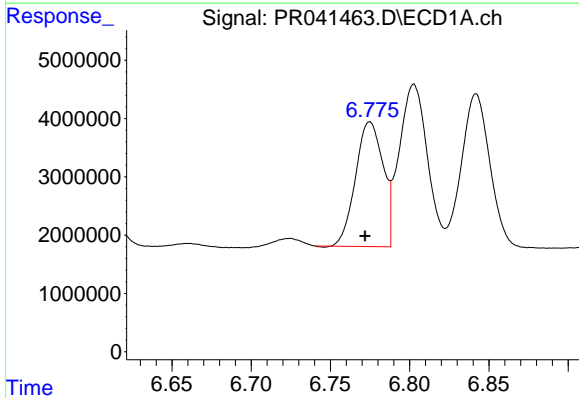
R.T.: 6.842 min
 Delta R.T.: 0.005 min
 Response: 33016032
 Conc: 405.18 ng/ml

Instrument :
 ECD_R
 ClientSampled :
 AR1248342



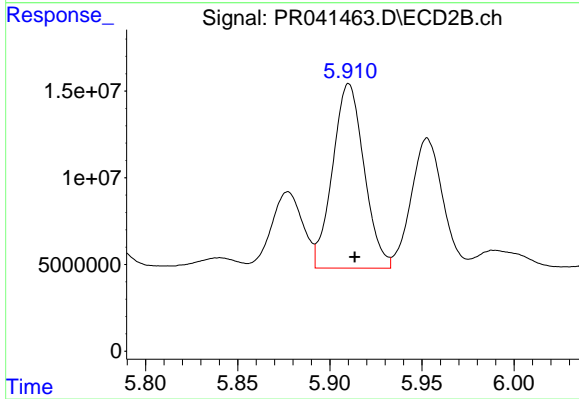
#25 AR-1248-5

R.T.: 5.953 min
 Delta R.T.: -0.001 min
 Response: 89932712
 Conc: 413.04 ng/ml



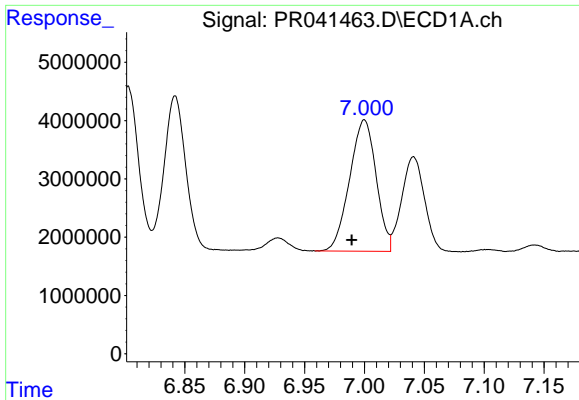
#26 AR-1254-1

R.T.: 6.775 min
 Delta R.T.: 0.003 min
 Response: 25837547
 Conc: 310.48 ng/ml



#26 AR-1254-1

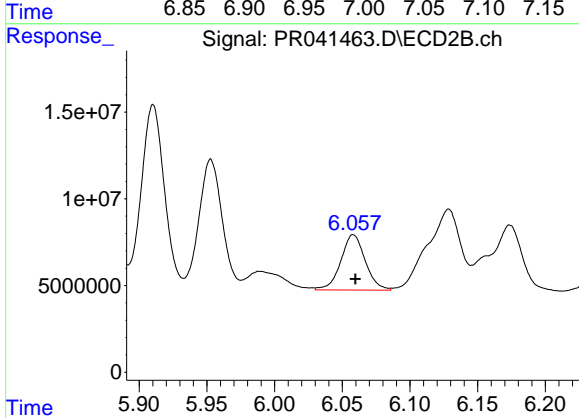
R.T.: 5.910 min
 Delta R.T.: -0.003 min
 Response: 126605639
 Conc: 390.40 ng/ml



#27 AR-1254-2

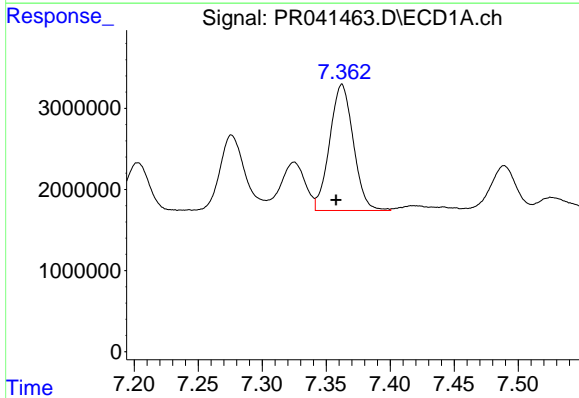
R.T.: 7.000 min
Delta R.T.: 0.011 min
Response: 34714764
Conc: 247.05 ng/ml

Instrument :
ECD_R
ClientSampleId :
AR1248342



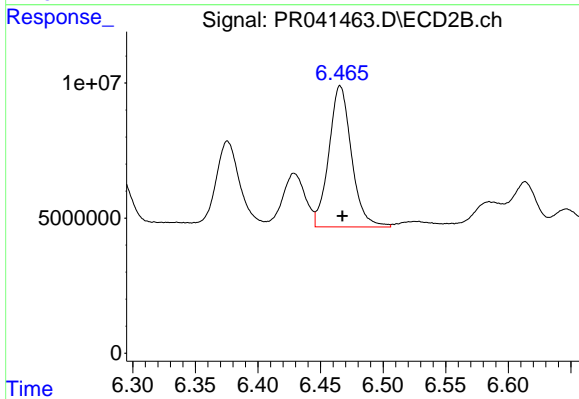
#27 AR-1254-2

R.T.: 6.058 min
Delta R.T.: -0.002 min
Response: 40271537
Conc: 131.82 ng/ml



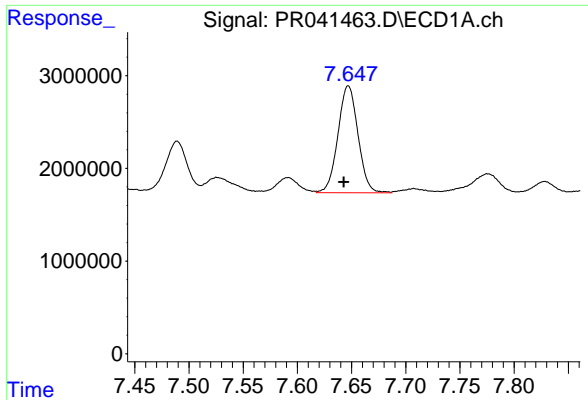
#28 AR-1254-3

R.T.: 7.362 min
Delta R.T.: 0.004 min
Response: 19977800
Conc: 117.91 ng/ml



#28 AR-1254-3

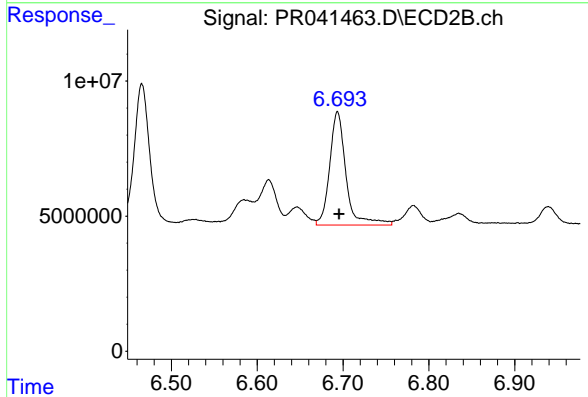
R.T.: 6.466 min
Delta R.T.: -0.002 min
Response: 65750152
Conc: 117.50 ng/ml



#29 AR-1254-4

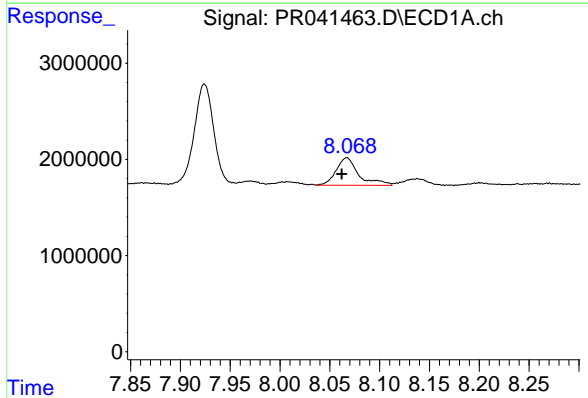
R.T.: 7.647 min
 Delta R.T.: 0.004 min
 Response: 14862301
 Conc: 109.49 ng/ml

Instrument :
 ECD_R
 ClientSampleId :
 AR1248342



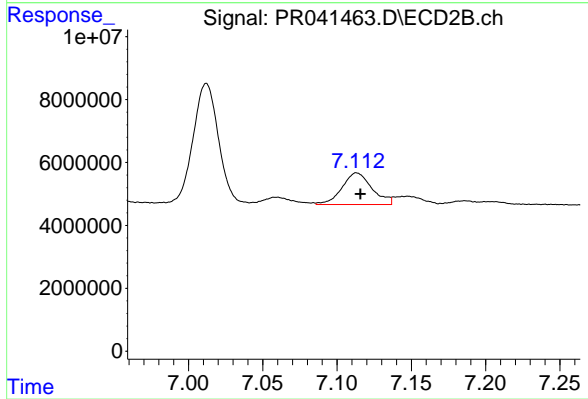
#29 AR-1254-4

R.T.: 6.694 min
 Delta R.T.: -0.002 min
 Response: 55666025
 Conc: 130.44 ng/ml



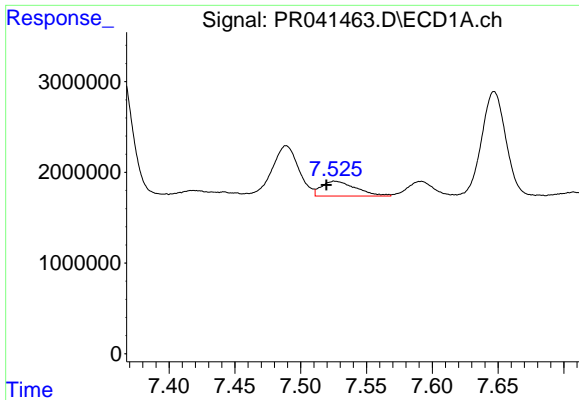
#30 AR-1254-5

R.T.: 8.067 min
 Delta R.T.: 0.005 min
 Response: 4497595
 Conc: 29.25 ng/ml



#30 AR-1254-5

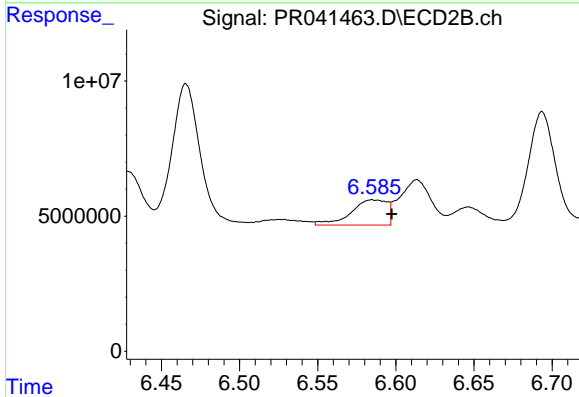
R.T.: 7.113 min
 Delta R.T.: -0.003 min
 Response: 14223412
 Conc: 24.59 ng/ml



#31 AR-1260-1

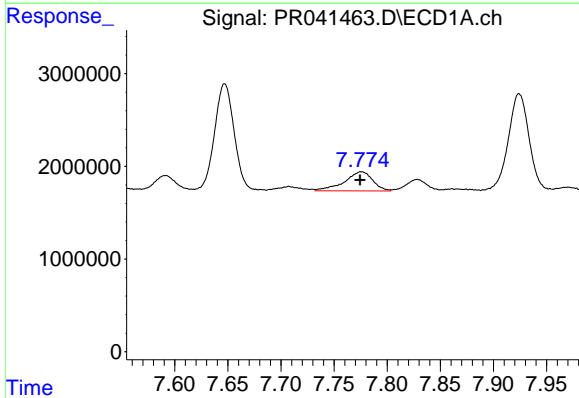
R.T.: 7.526 min
 Delta R.T.: 0.007 min
 Response: 2965347
 Conc: 25.04 ng/ml

Instrument :
 ECD_R
 ClientSampleId :
 AR1248342



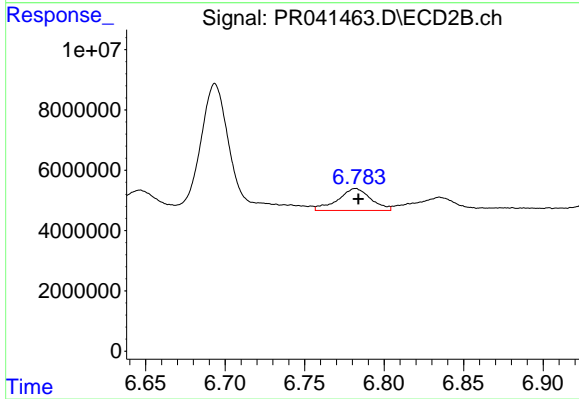
#31 AR-1260-1

R.T.: 6.585 min
 Delta R.T.: -0.013 min
 Response: 14974681
 Conc: 38.45 ng/ml



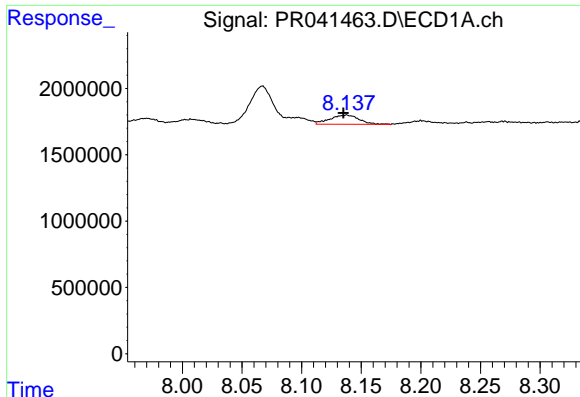
#32 AR-1260-2

R.T.: 7.776 min
 Delta R.T.: 0.001 min
 Response: 3808894
 Conc: 25.81 ng/ml



#32 AR-1260-2

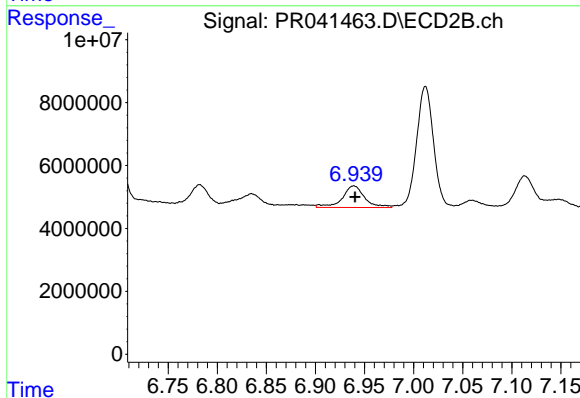
R.T.: 6.782 min
 Delta R.T.: -0.002 min
 Response: 10491406
 Conc: 19.46 ng/ml



#33 AR-1260-3

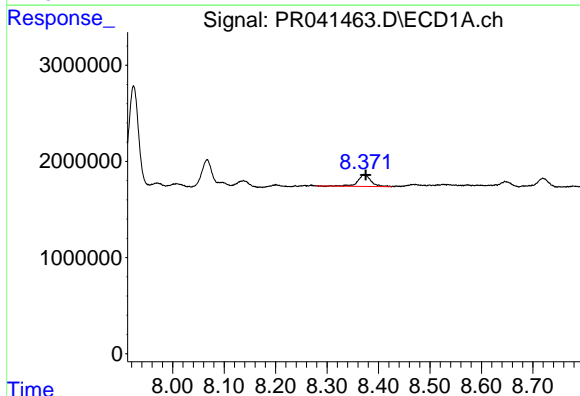
R.T.: 8.138 min
 Delta R.T.: 0.003 min
 Response: 1169260
 Conc: 10.08 ng/ml

Instrument :
 ECD_R
 ClientSampleId :
 AR1248342



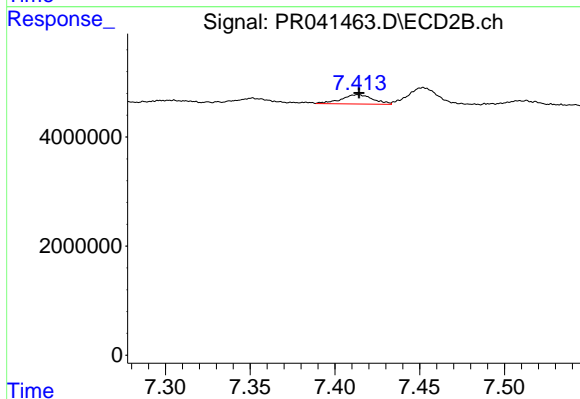
#33 AR-1260-3

R.T.: 6.939 min
 Delta R.T.: -0.001 min
 Response: 10918785
 Conc: 23.37 ng/ml



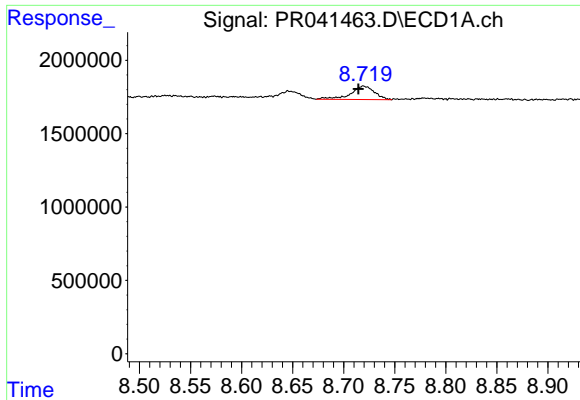
#34 AR-1260-4

R.T.: 8.372 min
 Delta R.T.: -0.004 min
 Response: 2121002
 Conc: 14.86 ng/ml



#34 AR-1260-4

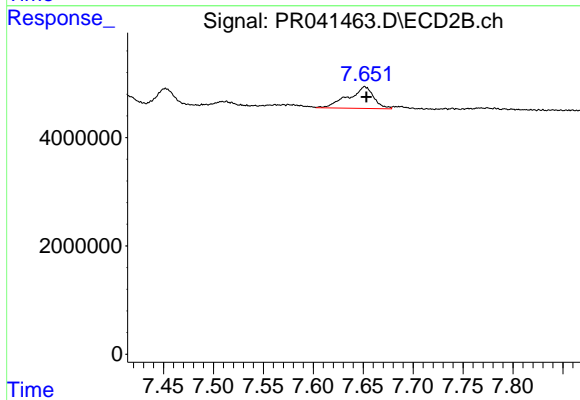
R.T.: 7.413 min
 Delta R.T.: 0.000 min
 Response: 2209990
 Conc: 5.21 ng/ml



#35 AR-1260-5

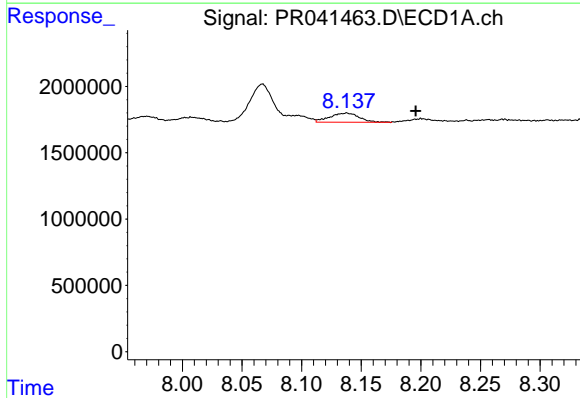
R.T.: 8.719 min
 Delta R.T.: 0.005 min
 Response: 1477486
 Conc: 4.80 ng/ml

Instrument :
 ECD_R
 ClientSampleId :
 AR1248342



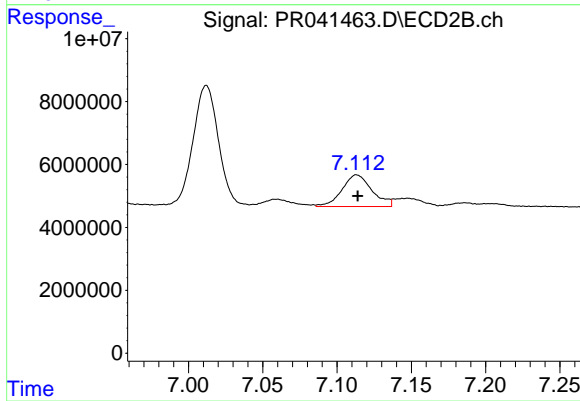
#35 AR-1260-5

R.T.: 7.652 min
 Delta R.T.: -0.002 min
 Response: 7134783
 Conc: 5.86 ng/ml



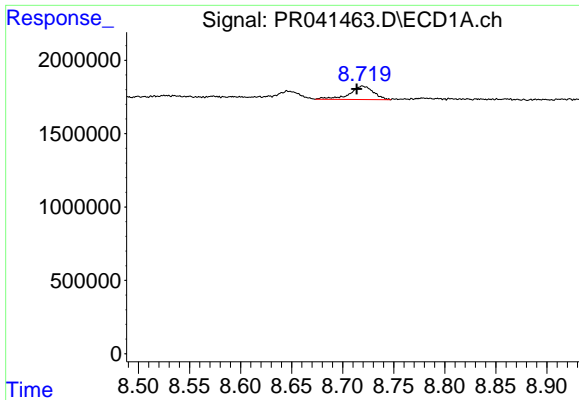
#36 AR-1262-1

R.T.: 8.138 min
 Delta R.T.: -0.058 min
 Response: 1169260
 Conc: 15.18 ng/ml



#36 AR-1262-1

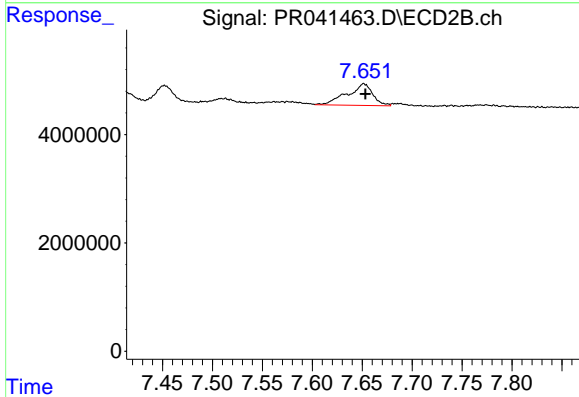
R.T.: 7.113 min
 Delta R.T.: 0.000 min
 Response: 14223412
 Conc: 42.50 ng/ml



#37 AR-1262-2

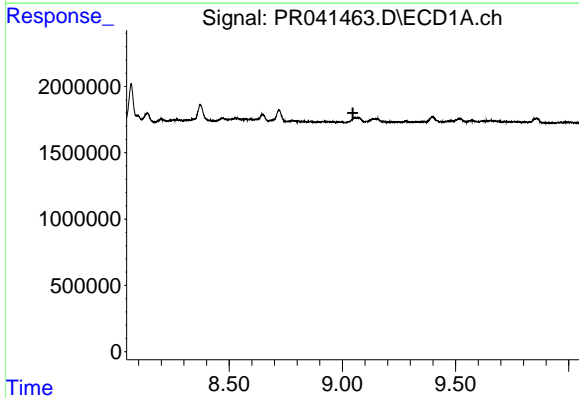
R.T.: 8.719 min
 Delta R.T.: 0.006 min
 Response: 1477486
 Conc: 3.90 ng/ml

Instrument :
 ECD_R
 ClientSampleId :
 AR1248342



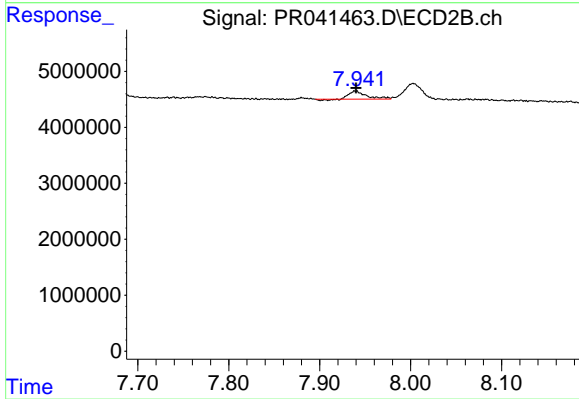
#37 AR-1262-2

R.T.: 7.652 min
 Delta R.T.: -0.002 min
 Response: 7134783
 Conc: 5.17 ng/ml



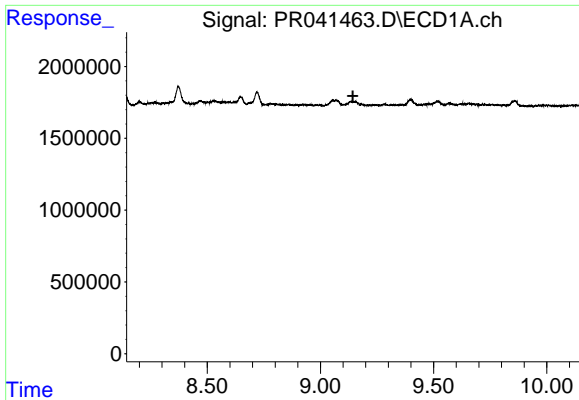
#38 AR-1262-3

R.T.: 0.000 min
 Exp R.T. : 9.047 min
 Response: 0
 Conc: N.D.



#38 AR-1262-3

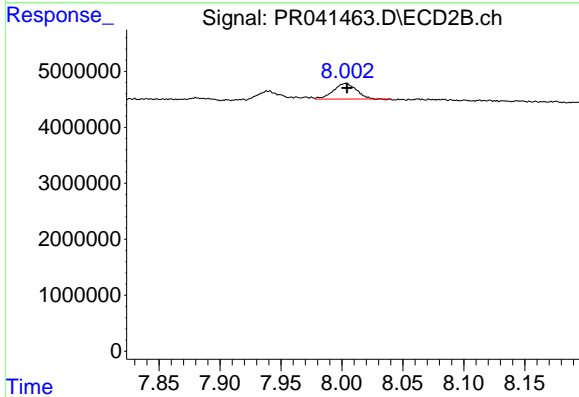
R.T.: 7.940 min
 Delta R.T.: 0.000 min
 Response: 1783308
 Conc: 3.12 ng/ml



#39 AR-1262-4

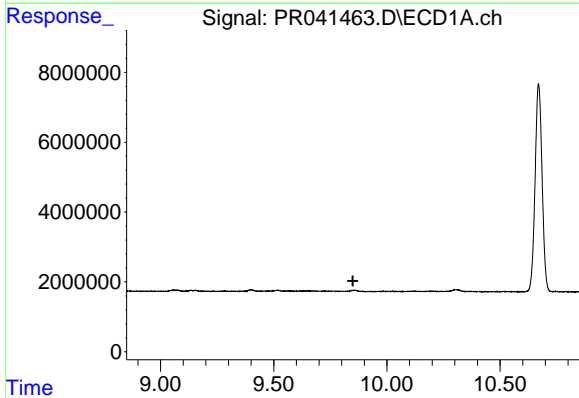
R.T.: 0.000 min
 Exp R.T. : 9.144 min
 Response: 0
 Conc: N.D.

Instrument :
 ECD_R
 ClientSampleId :
 AR1248342



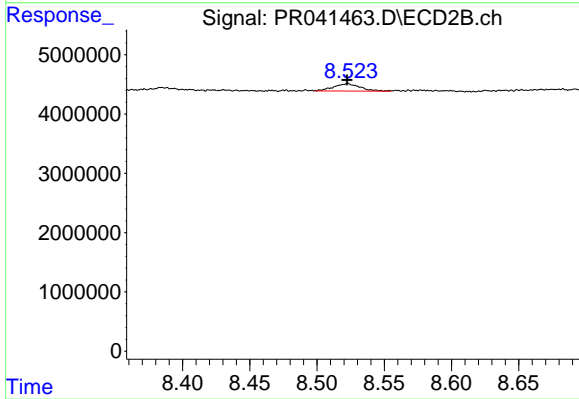
#39 AR-1262-4

R.T.: 8.003 min
 Delta R.T.: -0.001 min
 Response: 3632075
 Conc: 3.58 ng/ml



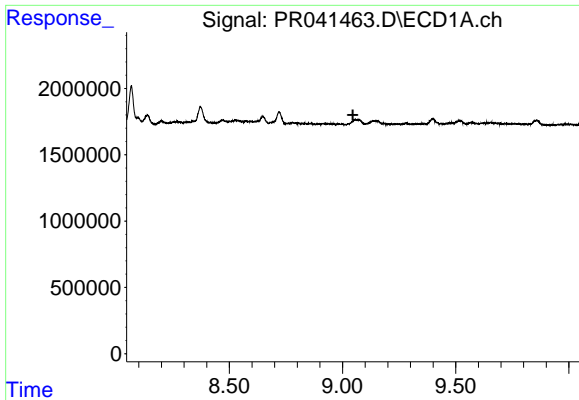
#40 AR-1262-5

R.T.: 0.000 min
 Exp R.T. : 9.850 min
 Response: 0
 Conc: N.D.



#40 AR-1262-5

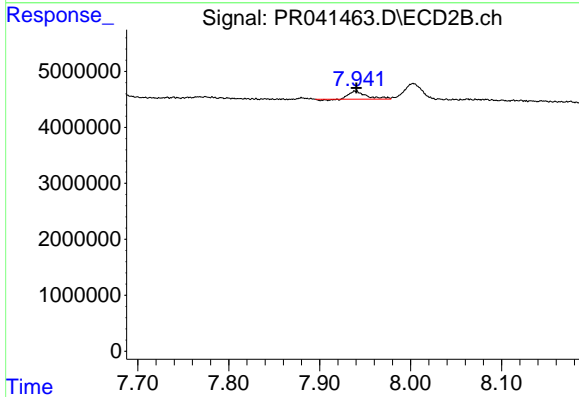
R.T.: 8.523 min
 Delta R.T.: 0.000 min
 Response: 1722429
 Conc: 3.08 ng/ml



#41 AR-1268-1

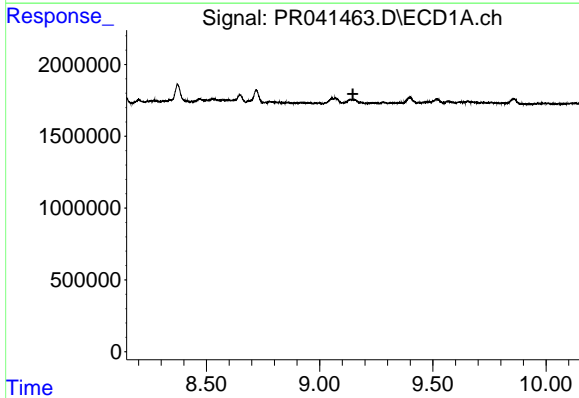
R.T.: 0.000 min
 Exp R.T. : 9.046 min
 Response: 0
 Conc: N.D.

Instrument :
 ECD_R
 ClientSampleId :
 AR1248342



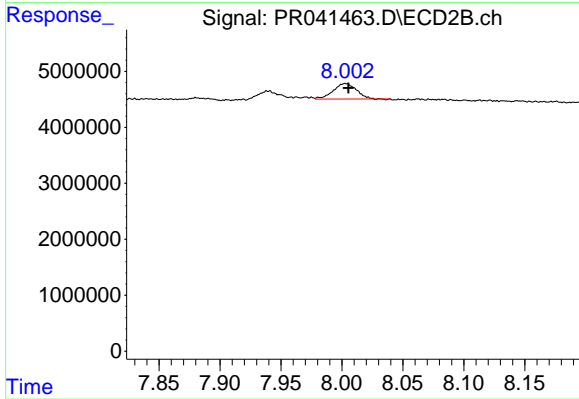
#41 AR-1268-1

R.T.: 7.940 min
 Delta R.T.: 0.000 min
 Response: 1783308
 Conc: 1.05 ng/ml



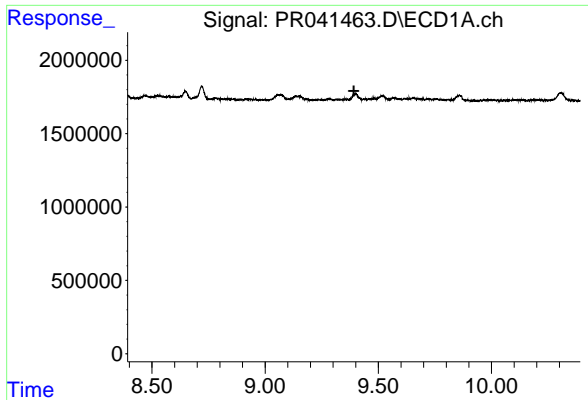
#42 AR-1268-2

R.T.: 0.000 min
 Exp R.T. : 9.147 min
 Response: 0
 Conc: N.D.



#42 AR-1268-2

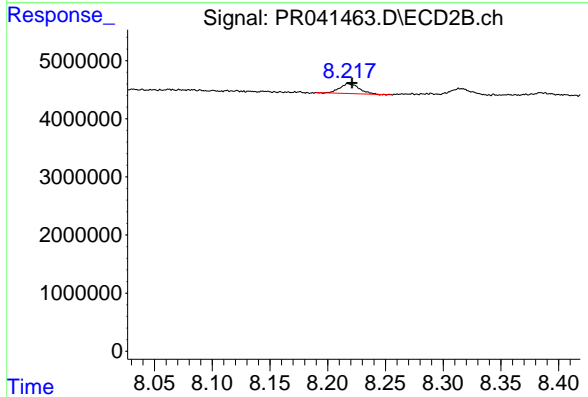
R.T.: 8.003 min
 Delta R.T.: -0.002 min
 Response: 3632075
 Conc: 2.32 ng/ml



#43 AR-1268-3

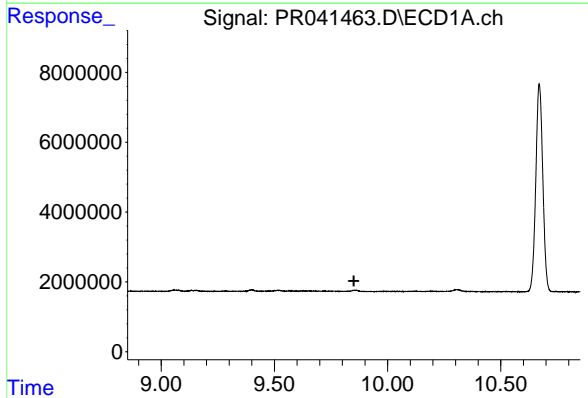
R.T.: 0.000 min
 Exp R.T. : 9.392 min
 Response: 0
 Conc: N.D.

Instrument :
 ECD_R
 ClientSampleId :
 AR1248342



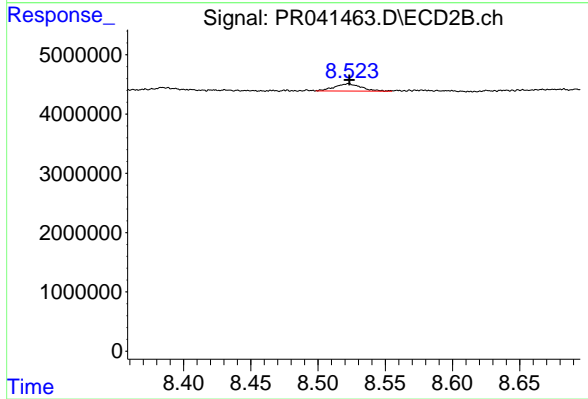
#43 AR-1268-3

R.T.: 8.218 min
 Delta R.T.: -0.003 min
 Response: 1970109
 Conc: 1.49 ng/ml



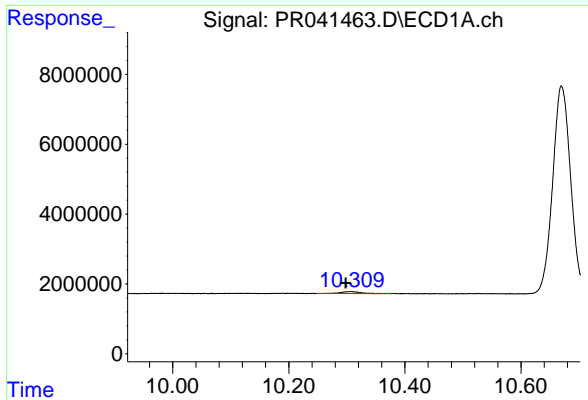
#44 AR-1268-4

R.T.: 0.000 min
 Exp R.T. : 9.851 min
 Response: 0
 Conc: N.D.



#44 AR-1268-4

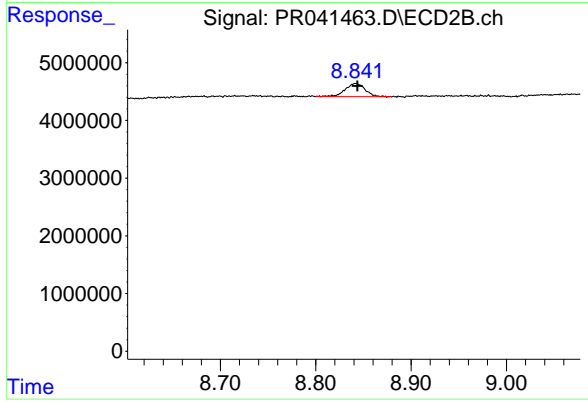
R.T.: 8.523 min
 Delta R.T.: 0.000 min
 Response: 1722429
 Conc: 2.87 ng/ml



#45 AR-1268-5

R.T.: 10.309 min
Delta R.T.: 0.011 min
Response: 1322832
Conc: 0.94 ng/ml

Instrument :
ECD_R
ClientSampleId :
AR1248342



#45 AR-1268-5

R.T.: 8.842 min
Delta R.T.: -0.002 min
Response: 3324406
Conc: 0.75 ng/ml