

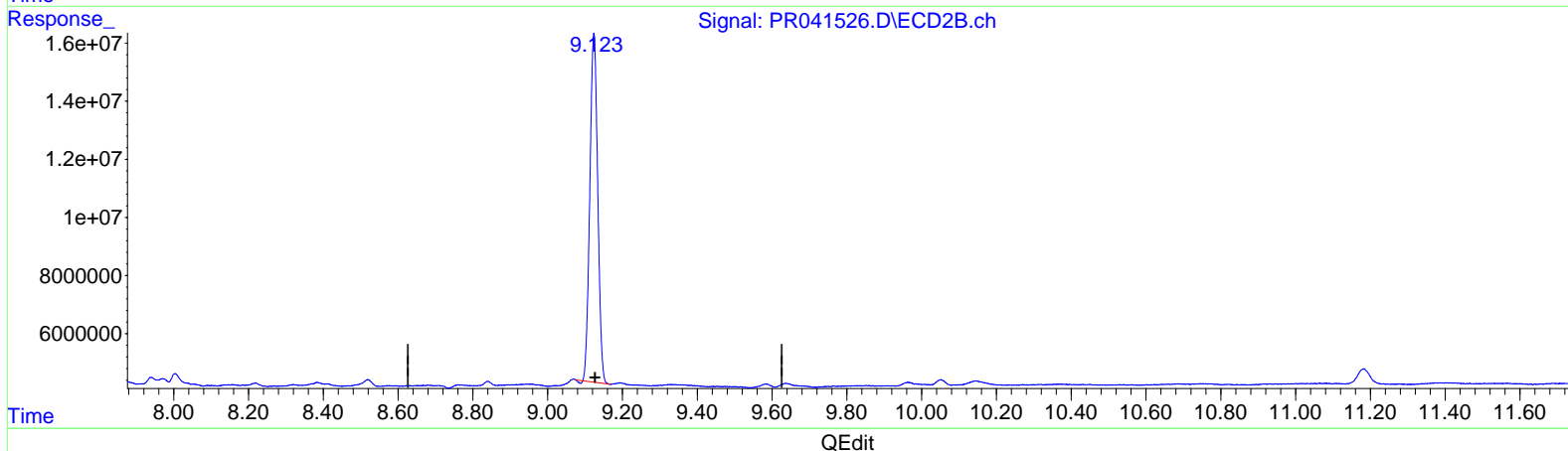
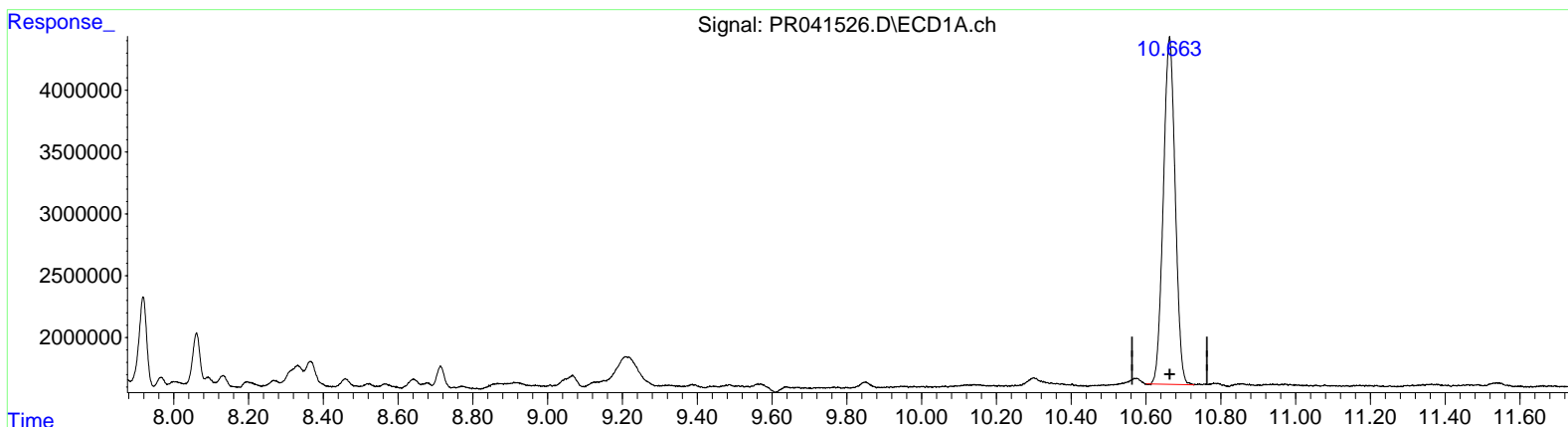
Data Path : Z:\pestpcbsrv\HPCHEM1\ECD_R\Data\PR092619\
 Data File : PR041526.D
 Signal(s) : Signal #1: ECD1A.ch Signal #2: ECD2B.ch
 Acq On : 26 Sep 2019 12:17
 Operator : SM\AJ
 Sample : K4988-09
 Misc :
 ALS Vial : 17 Sample Multiplier: 1

Instrument :
 ECD_R
ClientSampled :
 ESNZ6

Manual Integrations
APPROVED
 Ankita
 9/27/2019 1:32:20 PM

Integration File signal 1: autoint1.e
 Integration File signal 2: autoint2.e
 Quant Time: Sep 27 01:34:16 2019
 Quant Method : Z:\pestpcbsrv\HPCHEM1\ECD_R\Method\PR092319CLP.M
 Quant Title : GC EXTRACTABLES
 QLast Update : Tue Sep 24 04:36:18 2019
 Response via : Initial Calibration
 Integrator: ChemStation

Volume Inj. : 1 µl
 Signal #1 Phase : ZB MR1 Signal #2 Phase: ZB MR2
 Signal #1 Info : 30Mx0.32mmx 0.5µm Signal #2 Info : 30M x 0.32mm x 0.25µm



(2) Decachlorobiphenyl (SA)

10.663min 19.377 ng/ml

response 61849024

(2) Decachlorobiphenyl #2 (SA)

9.124min 16.247 ng/ml

response 175269561

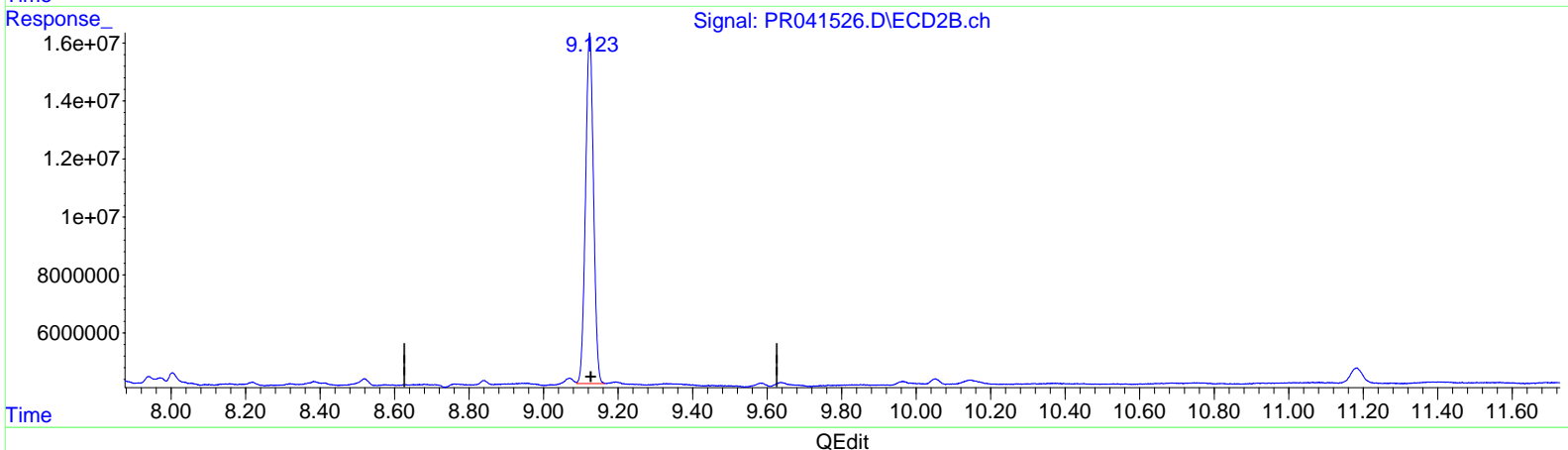
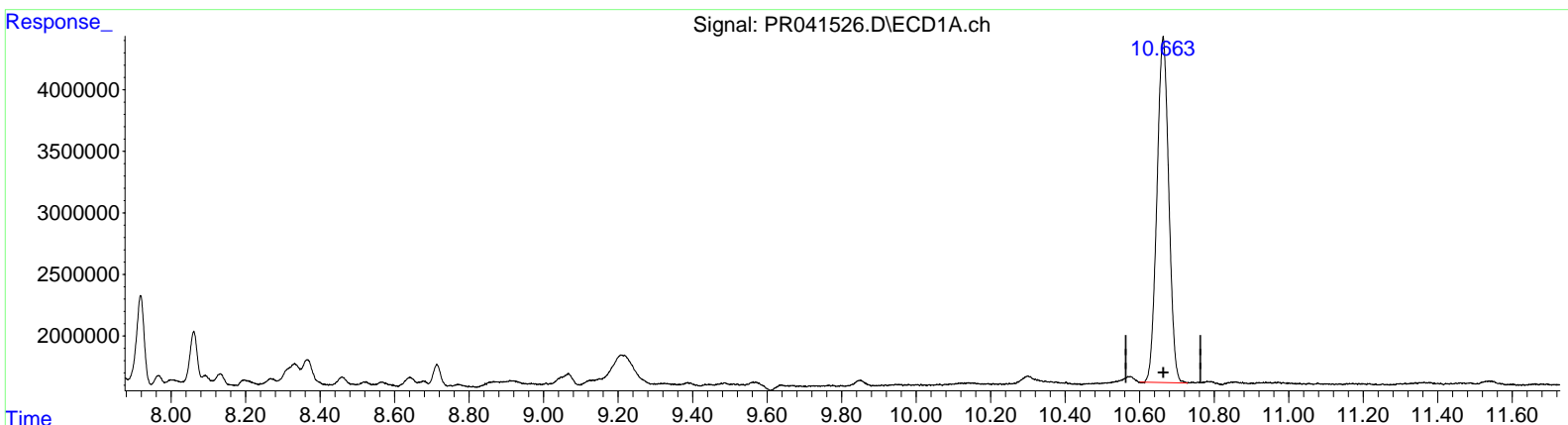
Data Path : Z:\pestpcbsrv\HPCHEM1\ECD_R\Data\PR092619\
 Data File : PR041526.D
 Signal(s) : Signal #1: ECD1A.ch Signal #2: ECD2B.ch
 Acq On : 26 Sep 2019 12:17
 Operator : SM\AJ
 Sample : K4988-09
 Misc :
 ALS Vial : 17 Sample Multiplier: 1

Instrument :
 ECD_R
Client Sampled :
 ESNZ6

Manual Integrations
APPROVED
 Ankita
 9/27/2019 1:32:20 PM

Integration File signal 1: autoint1.e
 Integration File signal 2: autoint2.e
 Quant Time: Sep 27 01:34:16 2019
 Quant Method : Z:\pestpcbsrv\HPCHEM1\ECD_R\Method\PR092319CLP.M
 Quant Title : GC EXTRACTABLES
 QLast Update : Tue Sep 24 04:36:18 2019
 Response via : Initial Calibration
 Integrator: ChemStation

Volume Inj. : 1 µl
 Signal #1 Phase : ZB MR1 Signal #2 Phase: ZB MR2
 Signal #1 Info : 30Mx0.32mmx 0.5µm Signal #2 Info : 30M x 0.32mm x 0.25µm



(2) Decachlorobiphenyl (SA)
 10.663min 19.377 ng/ml
 response 61849024

(2) Decachlorobiphenyl #2 (SA)
 9.123min 16.596 ng/ml m
 response 179040834

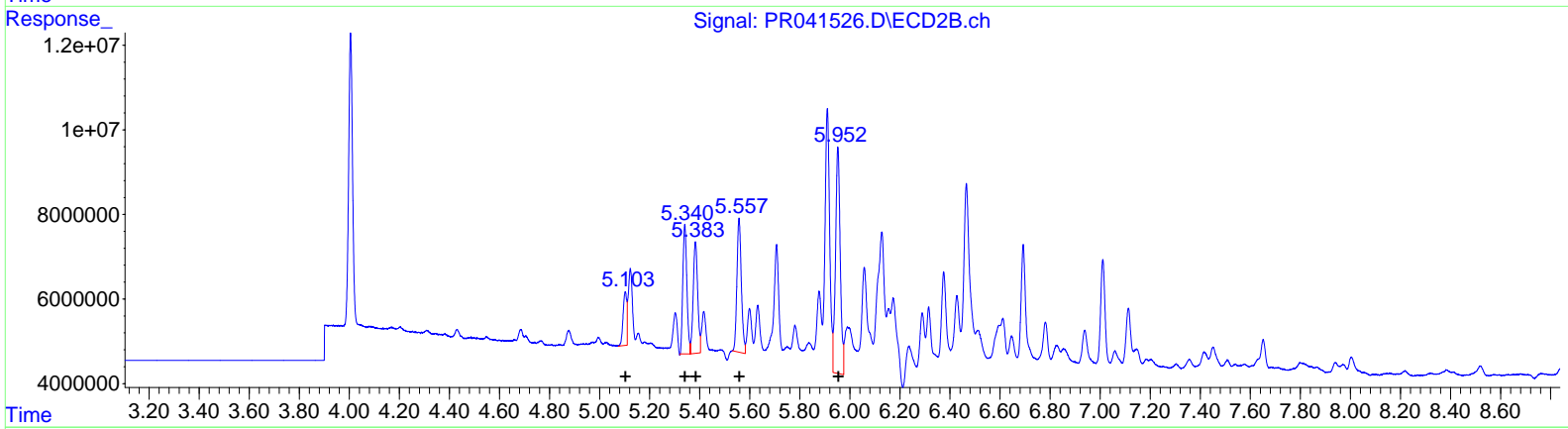
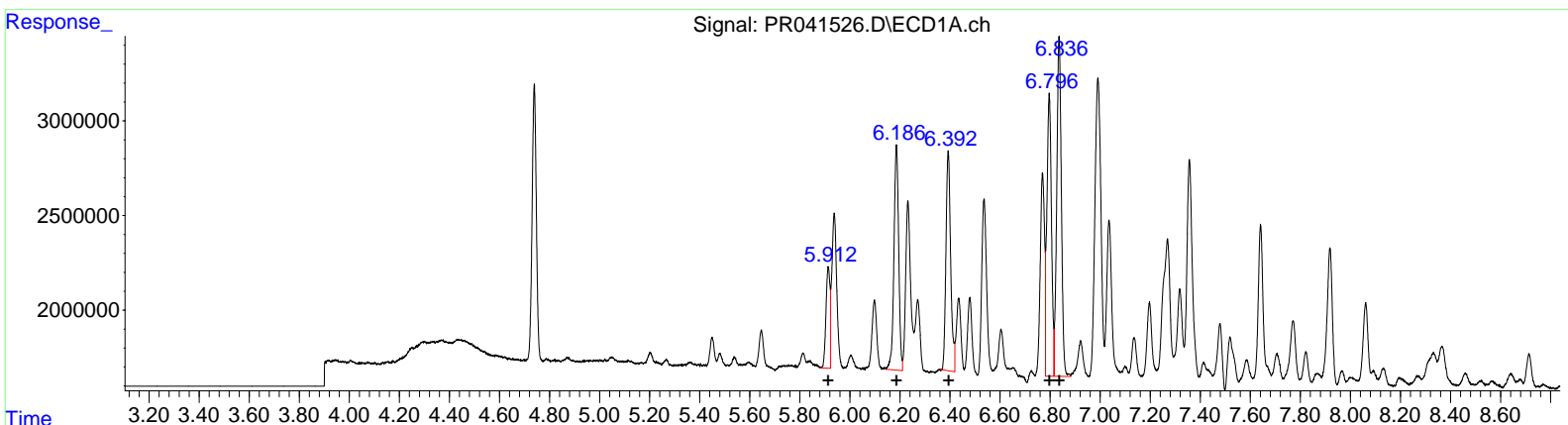
Data Path : Z:\pestpcbsrv\HPCHEM1\ECD_R\Data\PR092619\
 Data File : PR041526.D
 Signal(s) : Signal #1: ECD1A.ch Signal #2: ECD2B.ch
 Acq On : 26 Sep 2019 12:17
 Operator : SM\AJ
 Sample : K4988-09
 Misc :
 ALS Vial : 17 Sample Multiplier: 1

Instrument :
 ECD_R
Client Sampled :
 ESNZ6

Manual Integrations
APPROVED
 Ankita
 9/27/2019 1:32:20 PM

Integration File signal 1: autoint1.e
 Integration File signal 2: autoint2.e
 Quant Time: Sep 27 01:34:16 2019
 Quant Method : Z:\pestpcbsrv\HPCHEM1\ECD_R\Method\PR092319CLP.M
 Quant Title : GC EXTRACTABLES
 QLast Update : Tue Sep 24 04:36:18 2019
 Response via : Initial Calibration
 Integrator: ChemStation

Volume Inj. : 1 µl
 Signal #1 Phase : ZB MR1 Signal #2 Phase: ZB MR2
 Signal #1 Info : 30Mx0.32mmx 0.5µm Signal #2 Info : 30M x 0.32mm x 0.25µm



QEdit

(21) AR-1248-1 (L5)		
R.T.	Response	Conc
5.91	5980590	162.93
6.19	15563913	282.56
6.39	15174291	236.32
6.80	19014284	222.80
6.84	23077822	283.22

(21) AR-1248-1 #2 (L5)		
R.T.	Response	Conc
5.10	12919513	153.28
5.34	34825379	286.33
5.38	32921449	259.68
5.56	38928830	231.93
5.95	70180578	322.33

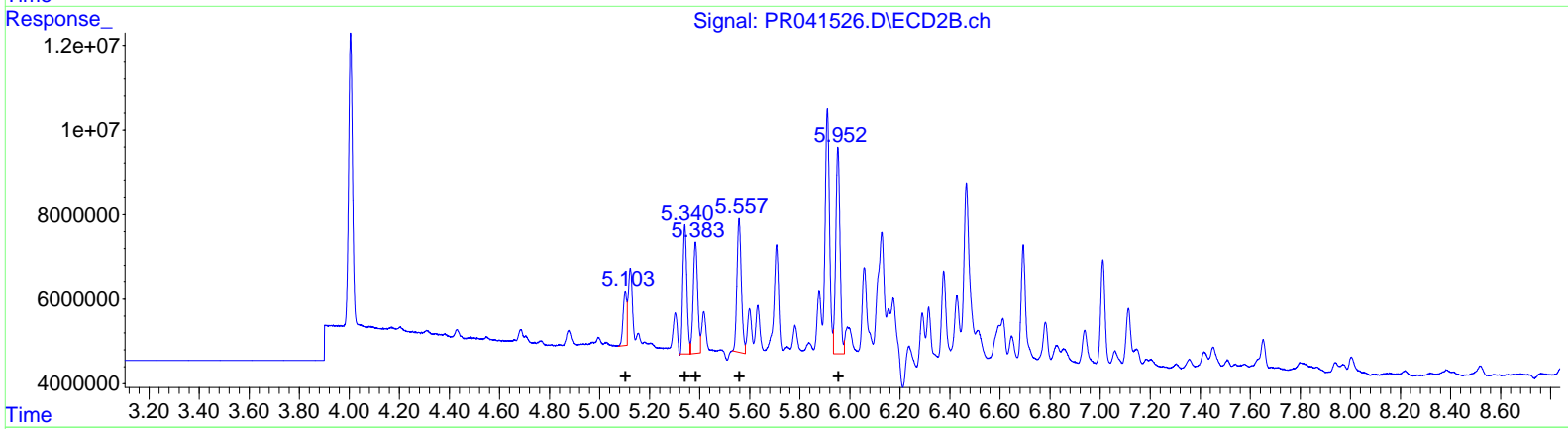
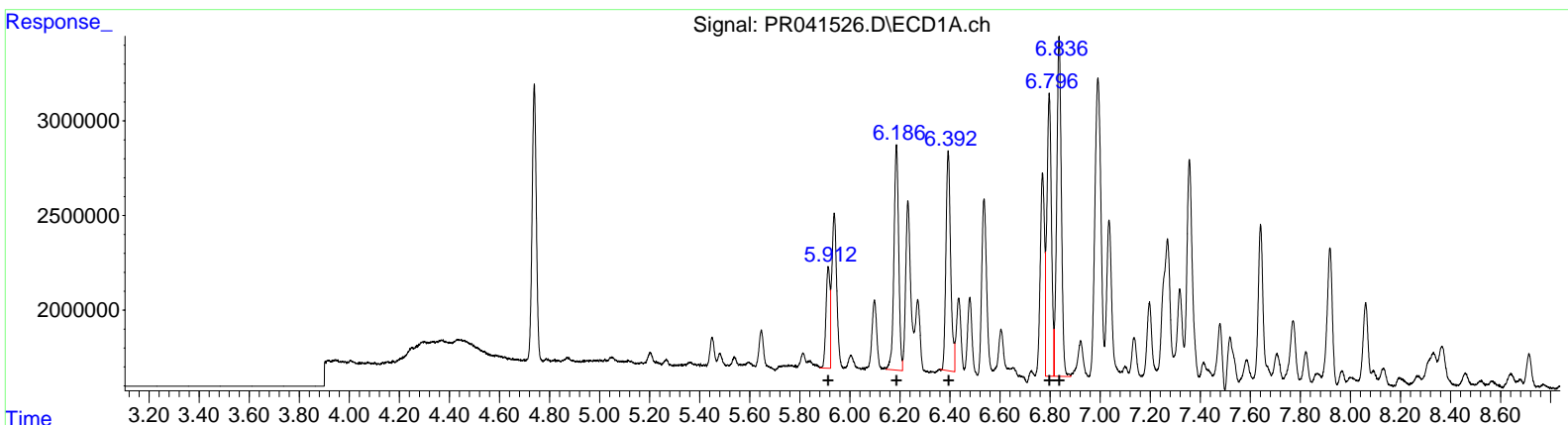
Data Path : Z:\pestpcbsrv\HPCHEM1\ECD_R\Data\PR092619\
 Data File : PR041526.D
 Signal(s) : Signal #1: ECD1A.ch Signal #2: ECD2B.ch
 Acq On : 26 Sep 2019 12:17
 Operator : SM\AJ
 Sample : K4988-09
 Misc :
 ALS Vial : 17 Sample Multiplier: 1

Instrument :
 ECD_R
Client Sampled :
 ESNZ6

Manual Integrations
APPROVED
 Ankita
 9/27/2019 1:32:20 PM

Integration File signal 1: autoint1.e
 Integration File signal 2: autoint2.e
 Quant Time: Sep 27 01:34:16 2019
 Quant Method : Z:\pestpcbsrv\HPCHEM1\ECD_R\Method\PR092319CLP.M
 Quant Title : GC EXTRACTABLES
 QLast Update : Tue Sep 24 04:36:18 2019
 Response via : Initial Calibration
 Integrator: ChemStation

Volume Inj. : 1 µl
 Signal #1 Phase : ZB MR1 Signal #2 Phase: ZB MR2
 Signal #1 Info : 30Mx0.32mmx 0.5µm Signal #2 Info : 30M x 0.32mm x 0.25µm



(21) AR-1248-1 (L5)

R.T.	Response	Conc
5.91	5980590	162.93
6.19	15563913	282.56
6.39	15174291	236.32
6.80	19014284	222.80
6.84	23077822	283.22

(21) AR-1248-1 #2 (L5)

R.T.	Response	Conc
5.10	12919513	153.28
5.34	34825379	286.33
5.38	32921449	259.68
5.56	38928830	231.93
5.95	57836274	265.63

Data Path : Z:\pestpcbsrv\HPCHEM1\ECD_R\Data\PR092619\
 Data File : PR041526.D
 Signal(s) : Signal #1: ECD1A.ch Signal #2: ECD2B.ch
 Acq On : 26 Sep 2019 12:17
 Operator : SM\AJ
 Sample : K4988-09
 Misc :
 ALS Vial : 17 Sample Multiplier: 1

Instrument :
 ECD_R
Client Sampled :
 ESNZ6

Integration File signal 1: autoint1.e
 Integration File signal 2: autoint2.e
 Quant Time: Sep 27 01:34:16 2019
 Quant Method : Z:\pestpcbsrv\HPCHEM1\ECD_R\Method\PR092319CLP.M
 Quant Title : GC EXTRACTABLES
 QLast Update : Tue Sep 24 04:36:18 2019
 Response via : Initial Calibration
 Integrator: ChemStation

Manual Integrations
APPROVED

Ankita
 9/27/2019 1:32:20 PM

Volume Inj. : 1 µl
 Signal #1 Phase : ZB MR1 Signal #2 Phase: ZB MR2
 Signal #1 Info : 30Mx0.32mmx 0.5µm Signal #2 Info : 30M x 0.32mm x 0.25µm

Compound	RT#1	RT#2	Resp#1	Resp#2	ng/ml	ng/ml

System Monitoring Compounds						
1) SA Tetrachlo...	4.739	4.005	16976538	75983429	12.789	12.562
2) SA Decachlor...	10.663	9.123	61849024	179.0E6	19.377	16.596m
Target Compounds						
21) L5 AR-1248-1	5.914	5.103	5980590	12919513	162.933	153.278
22) L5 AR-1248-2	6.186	5.341	15563913	34825379	282.556	286.325
23) L5 AR-1248-3	6.393	5.383	15174291	32921449	236.322	259.677
24) L5 AR-1248-4	6.797	5.557	19014284	38928830	222.798	231.931
25) L5 AR-1248-5	6.836	5.952	23077822	57836274	283.217	265.631m

AT
 10/02/19

(f)=RT Delta > 1/2 Window (#)=Amounts differ by > 25% (m)=manual int.