

Data Path : Z:\pestpcbsrv\HPCHEM1\ECD\_R\Data\PR092923\  
 Data File : PR063738.D  
 Signal(s) : Signal #1: ECD1A.ch Signal #2: ECD2B.ch  
 Acq On : 29 Sep 2023 19:11  
 Operator : YP\AJ  
 Sample : 04607-16  
 Misc :  
 ALS Vial : 39 Sample Multiplier: 1

Instrument :  
 ECD\_R  
 ClientSampleId :

Integration File signal 1: autoint1.e  
 Integration File signal 2: autoint2.e  
 Quant Time: Sep 29 21:35:02 2023  
 Quant Method : Z:\pestpcbsrv\HPCHEM1\ECD\_R\Method\PR091223CLP.M  
 Quant Title : GC EXTRACTABLES  
 QLast Update : Wed Sep 13 07:34:49 2023  
 Response via : Initial Calibration  
 Integrator: ChemStation

Volume Inj. : 1 µl  
 Signal #1 Phase : ZB MR1 Signal #2 Phase: ZB MR2  
 Signal #1 Info : 30Mx0.32mmx 0.5µm Signal #2 Info : 30M x 0.32mm x 0.25µm

Compound	RT#1	RT#2	Resp#1	Resp#2	ng/ml	ng/ml
System Monitoring Compounds						
1) SA Tetrachlo...	3.666	2.881	137.6E6	79526949	21.197	23.263
2) SA Decachlor...	9.665	8.170	86809149	68653792	23.442	22.972
Target Compounds						
3) L1 AR-1016-1	4.907	4.003	2534205	564349	12.972	5.013 #
4) L1 AR-1016-2	4.928	4.042	4032982	1009799	14.314	5.944 #
5) L1 AR-1016-3	5.004	4.220	1029677	197289	6.129	2.270 #
6) L1 AR-1016-4	5.085	4.254	1006264	175817	7.332	2.600 #
7) L1 AR-1016-5	5.376f	4.469	-86325	272612	N.D.	3.148 #
8) L2 AR-1221-1	0.000	3.081	0	427930	N.D.	11.557 #
9) L2 AR-1221-2	3.983	3.185	2191929	1087826	46.699	42.186
10) L2 AR-1221-3	4.096	3.269	776535	151250	4.813	1.579 #
11) L3 AR-1232-1	4.096	3.269	776535	151250	5.725	1.898 #
12) L3 AR-1232-2	4.584f	4.042	972785	1009799	15.361	13.495
13) L3 AR-1232-3	4.928	4.197	4032982	307333	32.056	8.163 #
14) L3 AR-1232-4	5.085	4.290	1006264	840266	16.608	26.483 #
15) L3 AR-1232-5	5.205	4.469	1331691	272612	30.786	7.560 #
16) L4 AR-1242-1	4.907	4.003	2534205	564349	15.201	5.912 #
17) L4 AR-1242-2	4.928	4.042	4032982	1009799	16.902	7.072 #
18) L4 AR-1242-3	5.004	4.197	1029677	307333	7.252	4.196 #
19) L4 AR-1242-4	5.085	4.290	1006264	840266	8.586	12.285 #
20) L4 AR-1242-5	5.890	4.843	2132530	517554	18.390	5.917 #
21) L5 AR-1248-1	4.907	4.003	2534205	564349	19.599	7.556 #
22) L5 AR-1248-2	5.205	4.254	1331691	175817	7.853	1.647 #
23) L5 AR-1248-3	5.376f	4.290	-86325	840266	N.D.	7.901 #
24) L5 AR-1248-4	5.850	4.469	3107158	272612	14.261	2.098 #
25) L5 AR-1248-5	5.890	4.881	2132530	2146453	10.135	16.698 #
26) L6 AR-1254-1	5.850	4.843	3107158	517554	14.160	2.621 #
27) L6 AR-1254-2	6.062	5.020	1513576	231588	4.567	1.370 #
28) L6 AR-1254-3	6.447	5.455	1644399	1424386	4.881	5.247
29) L6 AR-1254-4	6.759	5.679	1566662	1943767	6.760	11.586 #
30) L6 AR-1254-5	7.223	6.140	1728950	2323631	7.080	9.992 #
31) L7 AR-1260-1	6.655	5.587	406845	361191	1.693	2.036
32) L7 AR-1260-2	6.910	5.795	914592	1168523	3.334	5.489 #
33) L7 AR-1260-3	7.358	5.949	3488990	429911	18.246	2.158 #
34) L7 AR-1260-4	7.556	6.497f	2669433	-654166	12.208	N.D. #
35) L7 AR-1260-5	7.895	6.731	397509	3187042	0.919	8.051 #
36) L8 AR-1262-1	7.358	6.168	3488990	1541610	11.452	6.096 #
37) L8 AR-1262-2	7.895	6.731	397509	3187042	0.775	6.949 #
38) L8 AR-1262-3	8.269f	7.024	549794	315883	1.646	1.775
39) L8 AR-1262-4	8.313	7.097	559814	62731	2.249	0.186 #
40) L8 AR-1262-5	8.953	7.637	1431570	145719	8.020	0.966 #
41) L9 AR-1268-1	8.269f	7.024	549794	315883	0.916	0.585 #

Data Path : Z:\pestpcbsrv\HPCHEM1\ECD\_R\Data\PR092923\  
 Data File : PR063738.D  
 Signal(s) : Signal #1: ECD1A.ch Signal #2: ECD2B.ch  
 Acq On : 29 Sep 2023 19:11  
 Operator : YP\AJ  
 Sample : 04607-16  
 Misc :  
 ALS Vial : 39 Sample Multiplier: 1

Instrument :  
 ECD\_R  
 ClientSampleId :

Integration File signal 1: autoint1.e  
 Integration File signal 2: autoint2.e  
 Quant Time: Sep 29 21:35:02 2023  
 Quant Method : Z:\pestpcbsrv\HPCHEM1\ECD\_R\Method\PR091223CLP.M  
 Quant Title : GC EXTRACTABLES  
 QLast Update : Wed Sep 13 07:34:49 2023  
 Response via : Initial Calibration  
 Integrator: ChemStation

Volume Inj. : 1 µl  
 Signal #1 Phase : ZB MR1 Signal #2 Phase: ZB MR2  
 Signal #1 Info : 30Mx0.32mmx 0.5µm Signal #2 Info : 30M x 0.32mm x 0.25µm

	Compound	RT#1	RT#2	Resp#1	Resp#2	ng/ml	ng/ml
42)	L9 AR-1268-2	8.313	7.097	559814	62731	1.030	0.128 #
43)	L9 AR-1268-3	8.560	7.317	205979	243818	0.440	0.587 #
44)	L9 AR-1268-4	8.953	7.637	1431570	145719	7.154	0.860 #
45)	L9 AR-1268-5	9.349	7.934	1054120	400714	0.686	0.299 #

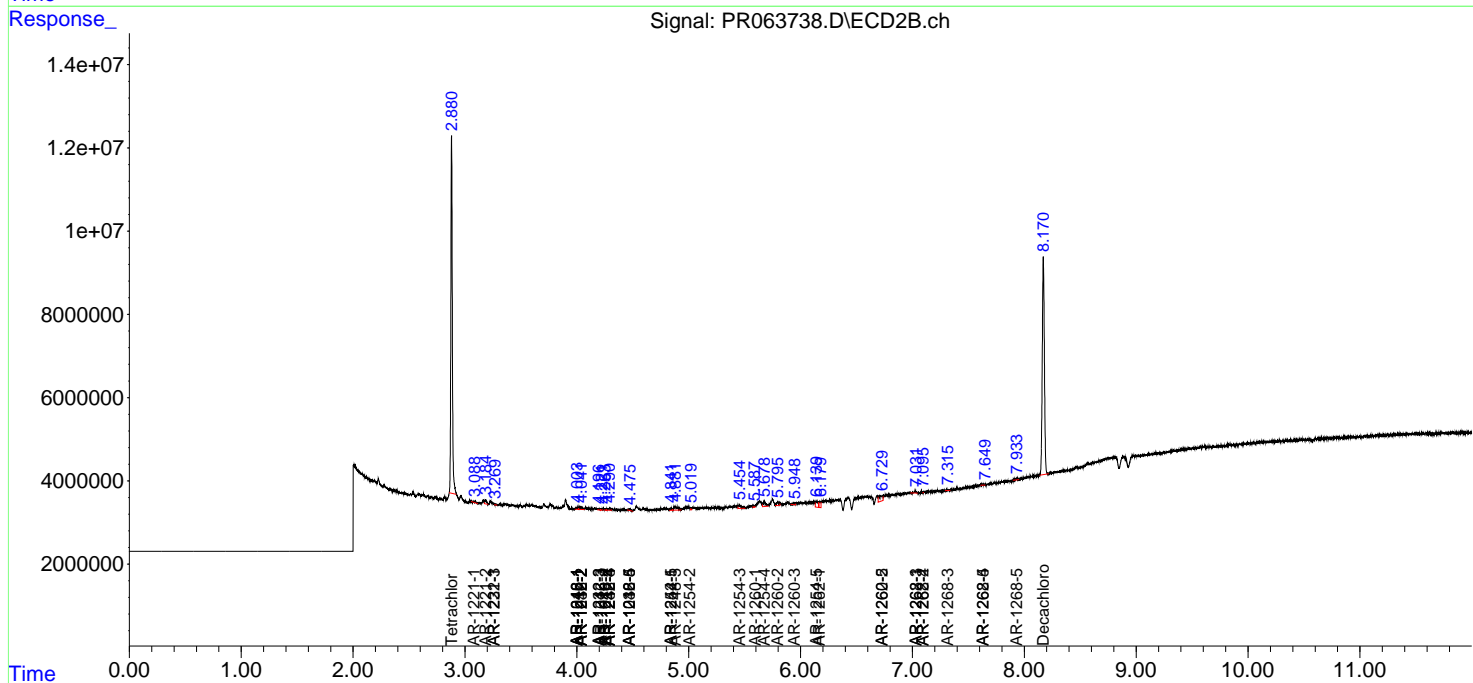
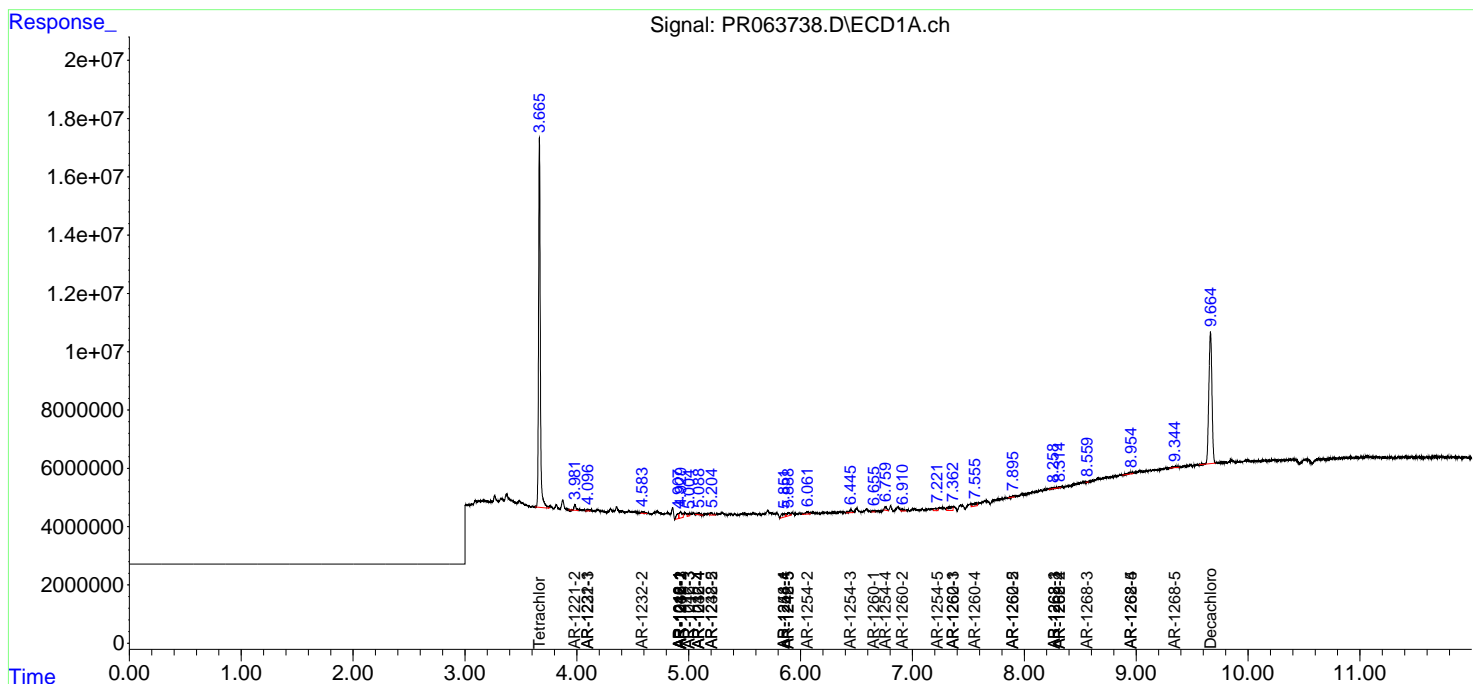
(f)=RT Delta > 1/2 Window (#)=Amounts differ by > 25% (m)=manual int.

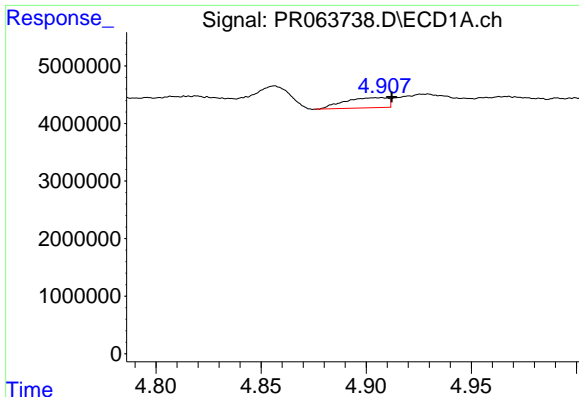
Data Path : Z:\pestpcbsrv\HPCHEM1\ECD\_R\Data\PR092923\  
 Data File : PR063738.D  
 Signal(s) : Signal #1: ECD1A.ch Signal #2: ECD2B.ch  
 Acq On : 29 Sep 2023 19:11  
 Operator : YP\AJ  
 Sample : 04607-16  
 Misc :  
 ALS Vial : 39 Sample Multiplier: 1

Instrument :  
 ECD\_R  
 ClientSampleId :

Integration File signal 1: autoint1.e  
 Integration File signal 2: autoint2.e  
 Quant Time: Sep 29 21:35:02 2023  
 Quant Method : Z:\pestpcbsrv\HPCHEM1\ECD\_R\Method\PR091223CLP.M  
 Quant Title : GC EXTRACTABLES  
 QLast Update : Wed Sep 13 07:34:49 2023  
 Response via : Initial Calibration  
 Integrator: ChemStation

Volume Inj. : 1 µl  
 Signal #1 Phase : ZB MR1 Signal #2 Phase: ZB MR2  
 Signal #1 Info : 30Mx0.32mmx 0.5µm Signal #2 Info : 30M x 0.32mm x 0.25µm

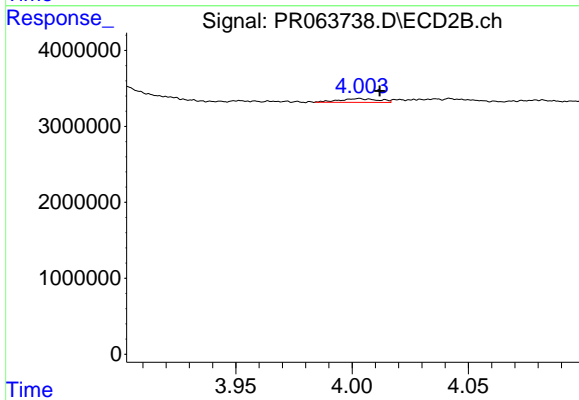




#3 AR-1016-1

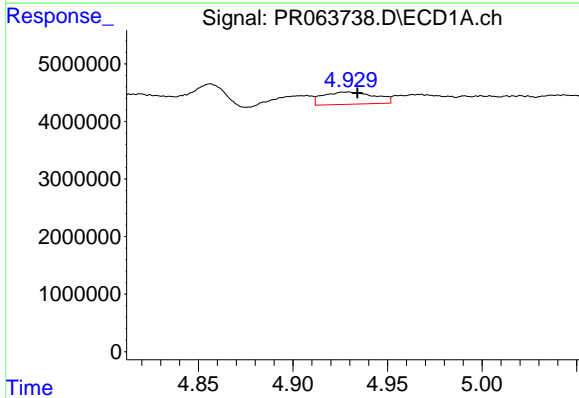
R.T.: 4.907 min  
 Delta R.T.: -0.005 min  
 Response: 2534205  
 Conc: 12.97 ng/ml

Instrument :  
 ECD\_R  
 ClientSampleId :



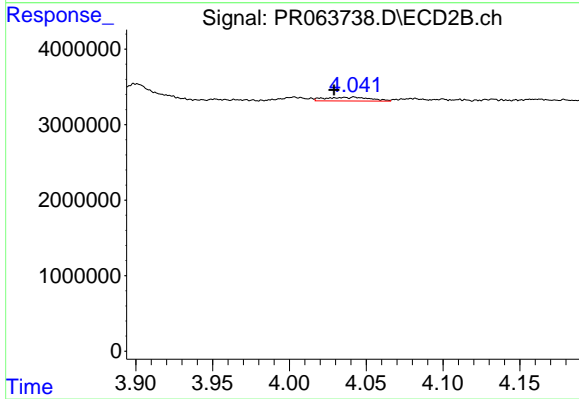
#3 AR-1016-1

R.T.: 4.003 min  
 Delta R.T.: -0.009 min  
 Response: 564349  
 Conc: 5.01 ng/ml



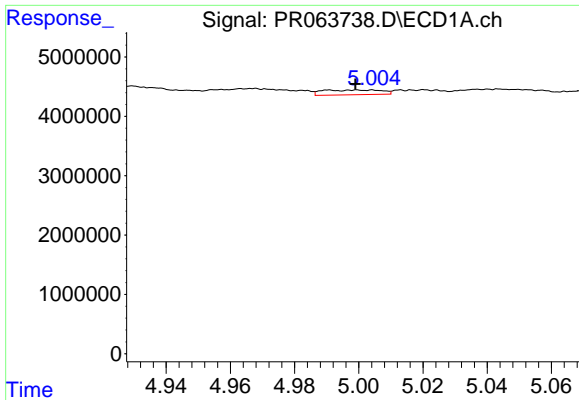
#4 AR-1016-2

R.T.: 4.928 min  
 Delta R.T.: -0.006 min  
 Response: 4032982  
 Conc: 14.31 ng/ml



#4 AR-1016-2

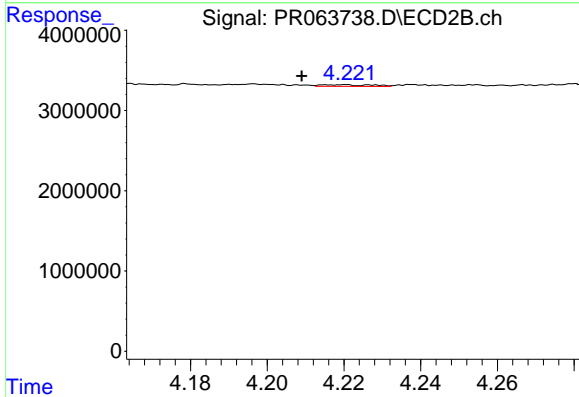
R.T.: 4.042 min  
 Delta R.T.: 0.013 min  
 Response: 1009799  
 Conc: 5.94 ng/ml



#5 AR-1016-3

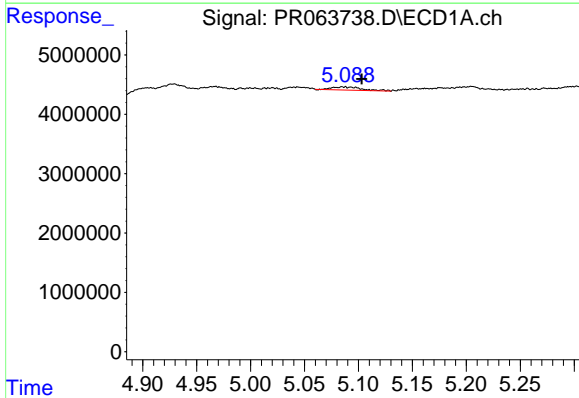
R.T.: 5.004 min  
 Delta R.T.: 0.005 min  
 Response: 1029677  
 Conc: 6.13 ng/ml

Instrument :  
 ECD\_R  
 ClientSampleId :



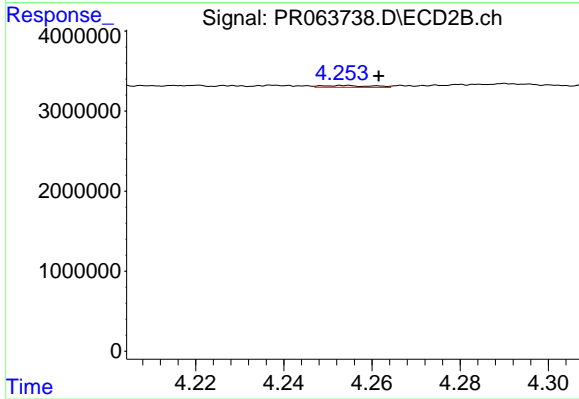
#5 AR-1016-3

R.T.: 4.220 min  
 Delta R.T.: 0.011 min  
 Response: 197289  
 Conc: 2.27 ng/ml



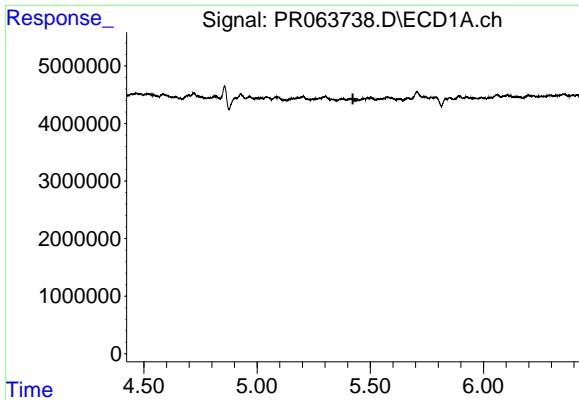
#6 AR-1016-4

R.T.: 5.085 min  
 Delta R.T.: -0.017 min  
 Response: 1006264  
 Conc: 7.33 ng/ml



#6 AR-1016-4

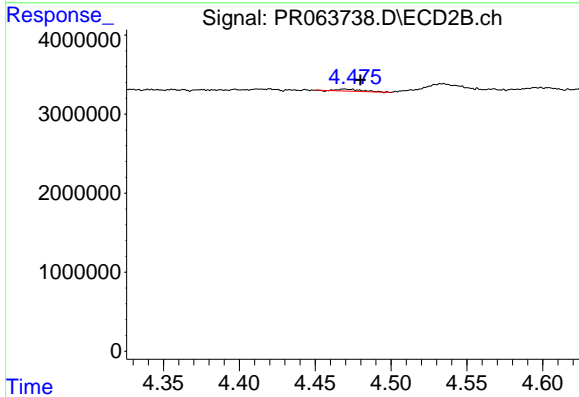
R.T.: 4.254 min  
 Delta R.T.: -0.008 min  
 Response: 175817  
 Conc: 2.60 ng/ml



#7 AR-1016-5

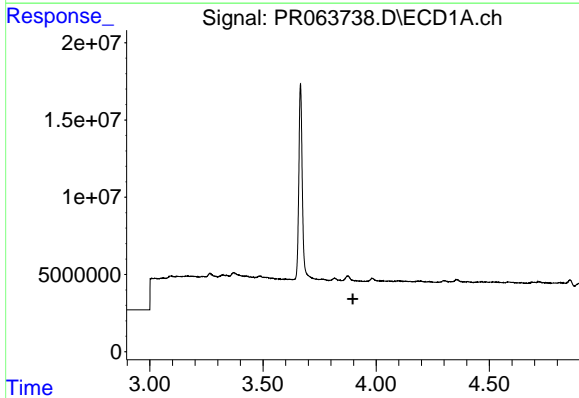
R.T.: 5.376 min  
 Delta R.T.: -0.047 min  
 Response: -86325  
 Conc: N.D.

Instrument :  
 ECD\_R  
 ClientSampleId :



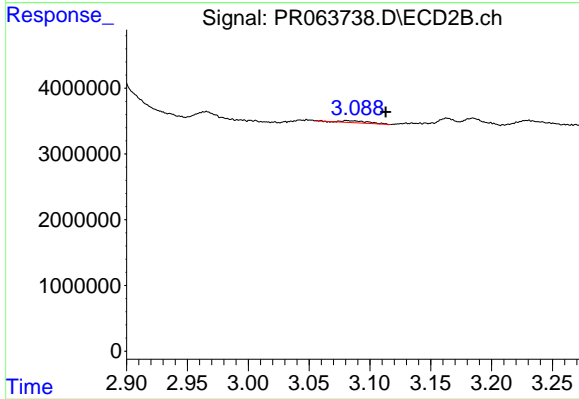
#7 AR-1016-5

R.T.: 4.469 min  
 Delta R.T.: -0.010 min  
 Response: 272612  
 Conc: 3.15 ng/ml



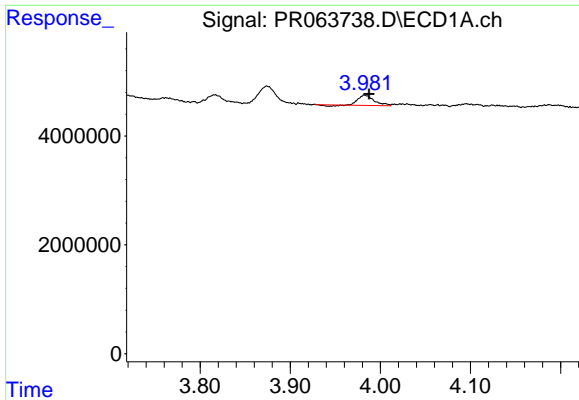
#8 AR-1221-1

R.T.: 0.000 min  
 Exp R.T. : 3.897 min  
 Response: 0  
 Conc: N.D.



#8 AR-1221-1

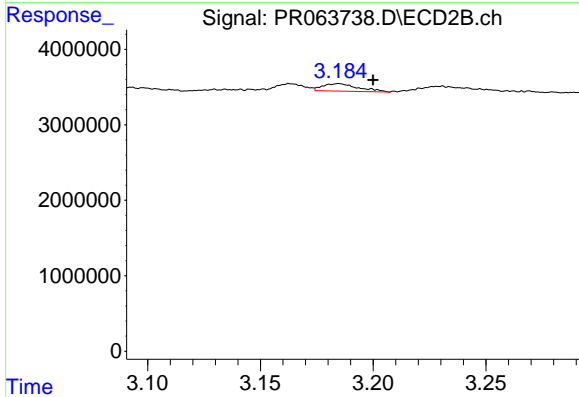
R.T.: 3.081 min  
 Delta R.T.: -0.032 min  
 Response: 427930  
 Conc: 11.56 ng/ml



#9 AR-1221-2

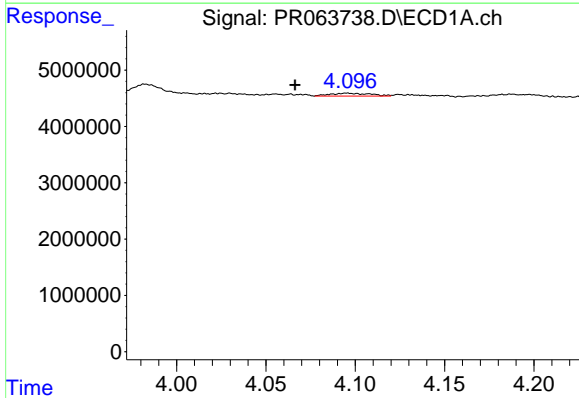
R.T.: 3.983 min  
 Delta R.T.: -0.005 min  
 Response: 2191929  
 Conc: 46.70 ng/ml

Instrument :  
 ECD\_R  
 ClientSampleId :



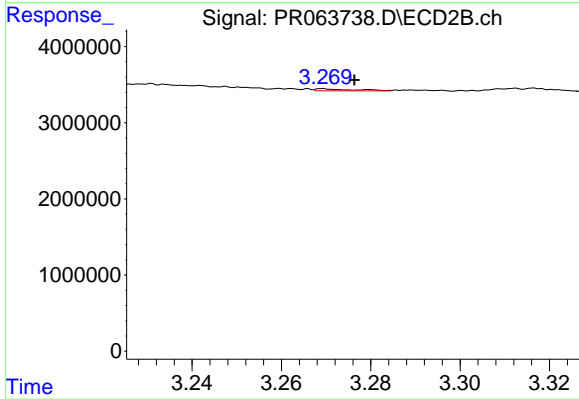
#9 AR-1221-2

R.T.: 3.185 min  
 Delta R.T.: -0.015 min  
 Response: 1087826  
 Conc: 42.19 ng/ml



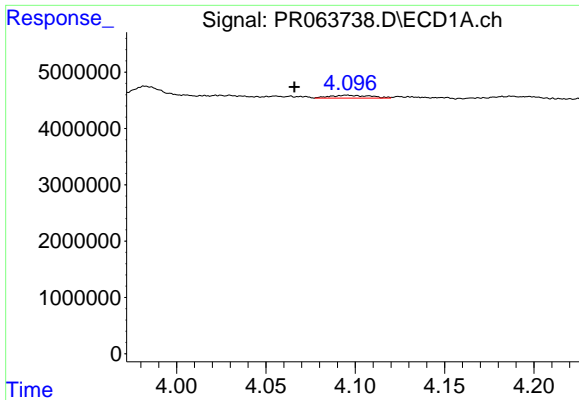
#10 AR-1221-3

R.T.: 4.096 min  
 Delta R.T.: 0.029 min  
 Response: 776535  
 Conc: 4.81 ng/ml



#10 AR-1221-3

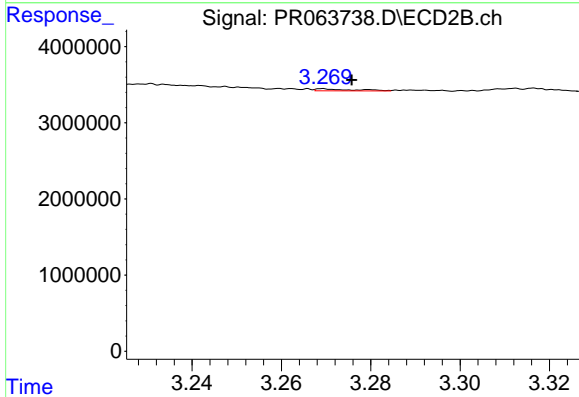
R.T.: 3.269 min  
 Delta R.T.: -0.007 min  
 Response: 151250  
 Conc: 1.58 ng/ml



#11 AR-1232-1

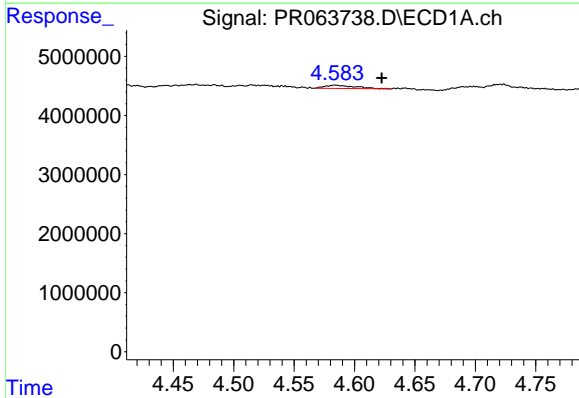
R.T.: 4.096 min  
 Delta R.T.: 0.030 min  
 Response: 776535  
 Conc: 5.72 ng/ml

Instrument :  
 ECD\_R  
 ClientSampleId :



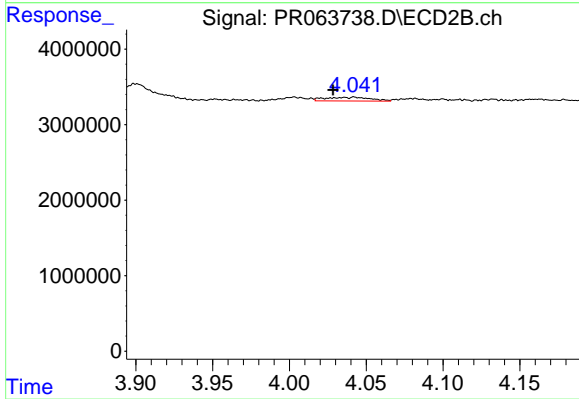
#11 AR-1232-1

R.T.: 3.269 min  
 Delta R.T.: -0.007 min  
 Response: 151250  
 Conc: 1.90 ng/ml



#12 AR-1232-2

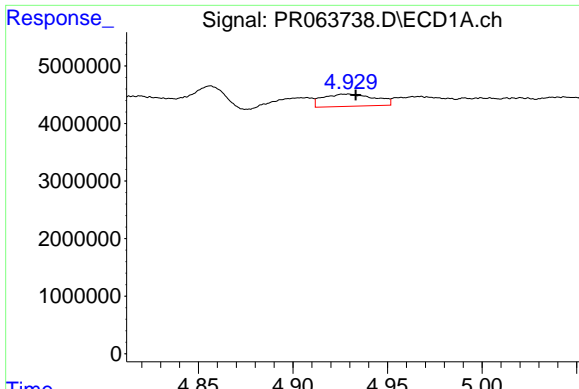
R.T.: 4.584 min  
 Delta R.T.: -0.038 min  
 Response: 972785  
 Conc: 15.36 ng/ml



#12 AR-1232-2

R.T.: 4.042 min  
 Delta R.T.: 0.014 min  
 Response: 1009799  
 Conc: 13.49 ng/ml

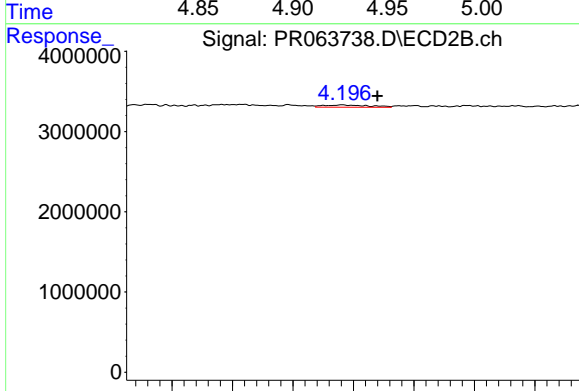




#13 AR-1232-3

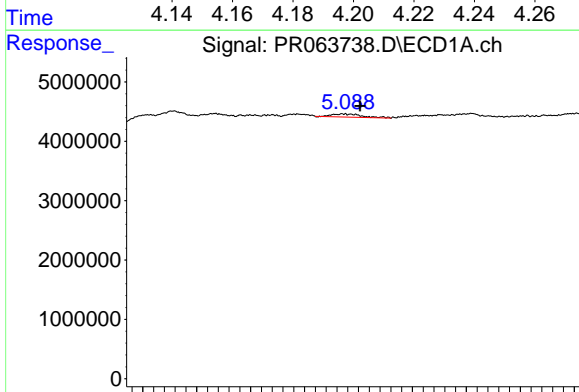
R.T.: 4.928 min  
 Delta R.T.: -0.005 min  
 Response: 4032982  
 Conc: 32.06 ng/ml

Instrument :  
 ECD\_R  
 ClientSampleId :



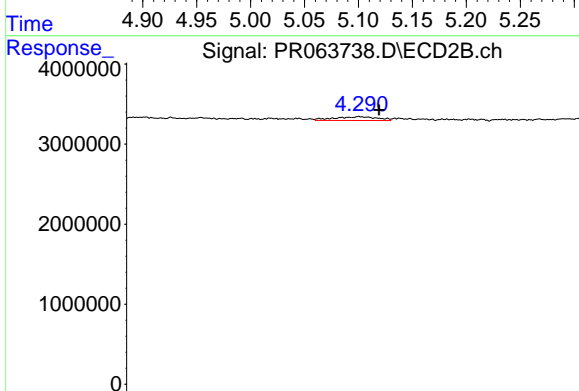
#13 AR-1232-3

R.T.: 4.197 min  
 Delta R.T.: -0.011 min  
 Response: 307333  
 Conc: 8.16 ng/ml



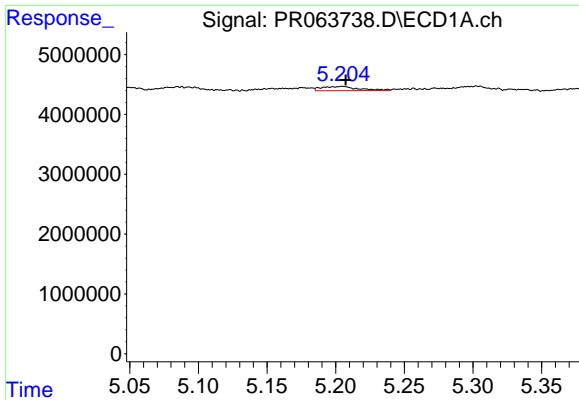
#14 AR-1232-4

R.T.: 5.085 min  
 Delta R.T.: -0.016 min  
 Response: 1006264  
 Conc: 16.61 ng/ml



#14 AR-1232-4

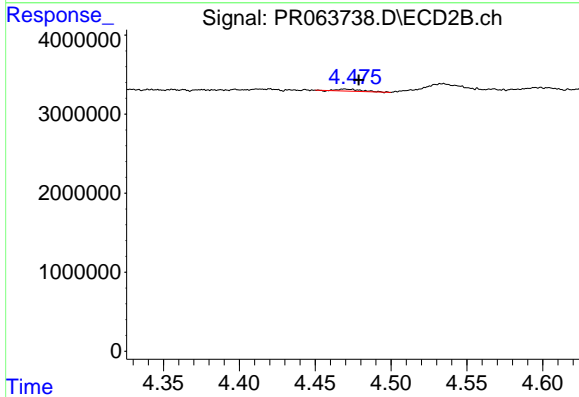
R.T.: 4.290 min  
 Delta R.T.: -0.012 min  
 Response: 840266  
 Conc: 26.48 ng/ml



#15 AR-1232-5

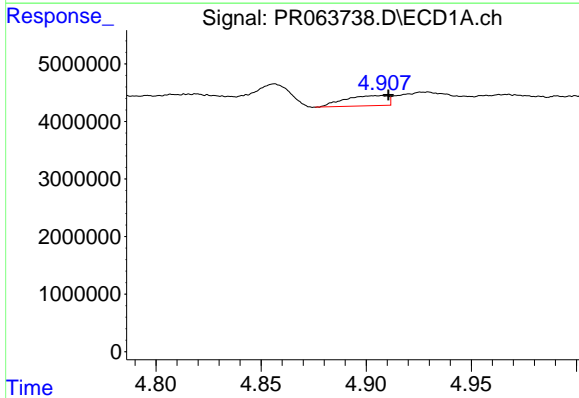
R.T.: 5.205 min  
 Delta R.T.: -0.002 min  
 Response: 1331691  
 Conc: 30.79 ng/ml

Instrument :  
 ECD\_R  
 ClientSampleId :



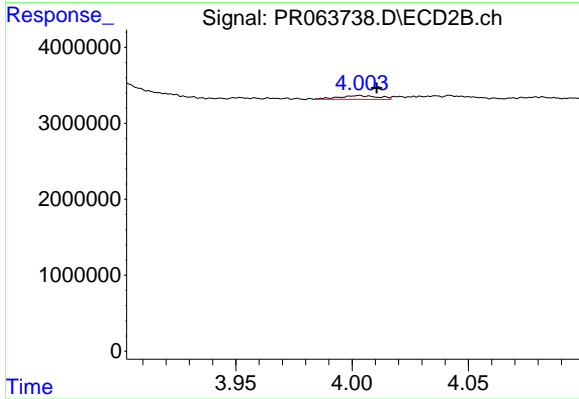
#15 AR-1232-5

R.T.: 4.469 min  
 Delta R.T.: -0.009 min  
 Response: 272612  
 Conc: 7.56 ng/ml



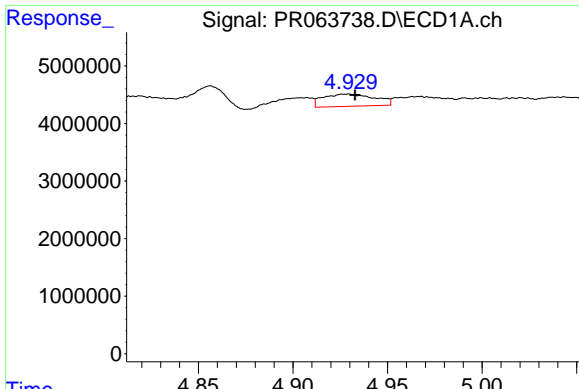
#16 AR-1242-1

R.T.: 4.907 min  
 Delta R.T.: -0.003 min  
 Response: 2534205  
 Conc: 15.20 ng/ml



#16 AR-1242-1

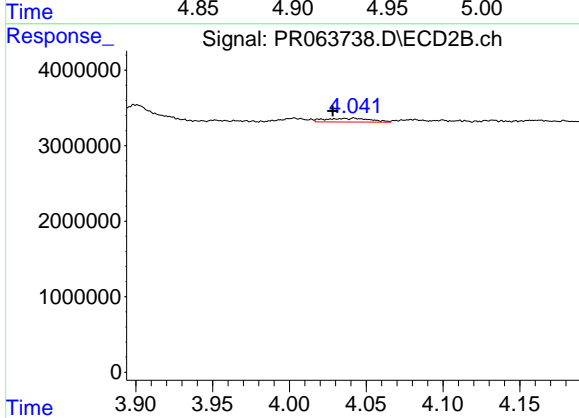
R.T.: 4.003 min  
 Delta R.T.: -0.008 min  
 Response: 564349  
 Conc: 5.91 ng/ml



#17 AR-1242-2

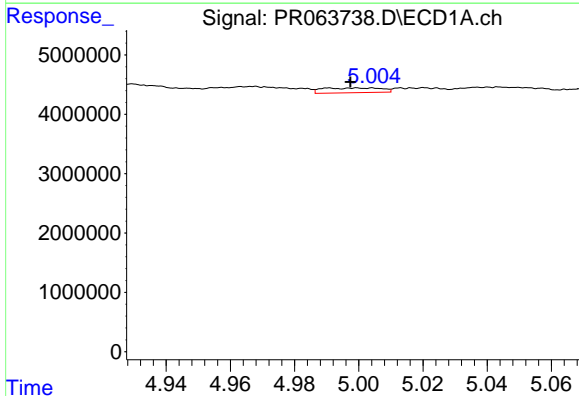
R.T.: 4.928 min  
 Delta R.T.: -0.004 min  
 Response: 4032982  
 Conc: 16.90 ng/ml

Instrument :  
 ECD\_R  
 ClientSampleId :



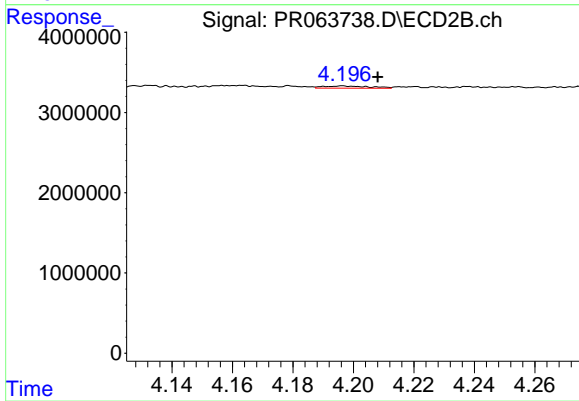
#17 AR-1242-2

R.T.: 4.042 min  
 Delta R.T.: 0.014 min  
 Response: 1009799  
 Conc: 7.07 ng/ml



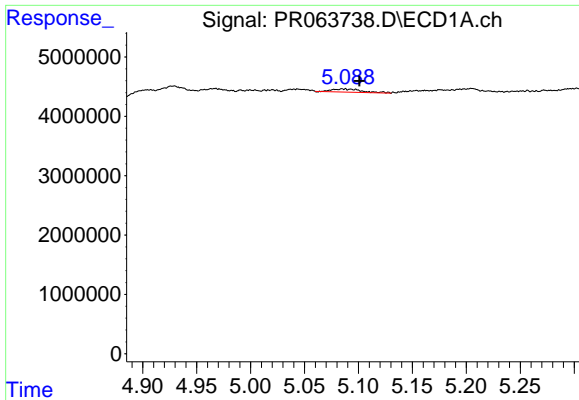
#18 AR-1242-3

R.T.: 5.004 min  
 Delta R.T.: 0.007 min  
 Response: 1029677  
 Conc: 7.25 ng/ml



#18 AR-1242-3

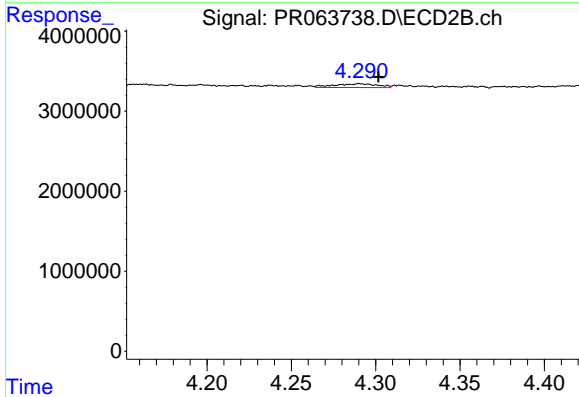
R.T.: 4.197 min  
 Delta R.T.: -0.012 min  
 Response: 307333  
 Conc: 4.20 ng/ml



#19 AR-1242-4

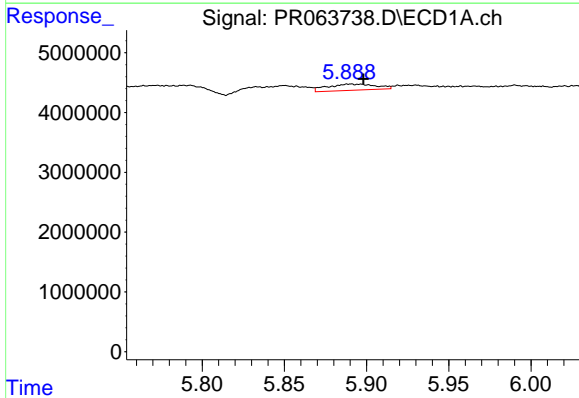
R.T.: 5.085 min  
 Delta R.T.: -0.015 min  
 Response: 1006264  
 Conc: 8.59 ng/ml

Instrument :  
 ECD\_R  
 ClientSampleId :



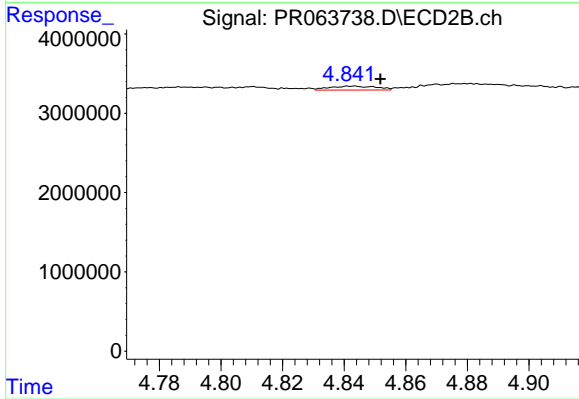
#19 AR-1242-4

R.T.: 4.290 min  
 Delta R.T.: -0.011 min  
 Response: 840266  
 Conc: 12.29 ng/ml



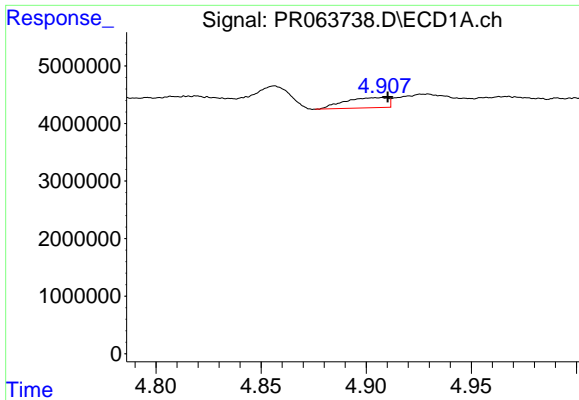
#20 AR-1242-5

R.T.: 5.890 min  
 Delta R.T.: -0.008 min  
 Response: 2132530  
 Conc: 18.39 ng/ml



#20 AR-1242-5

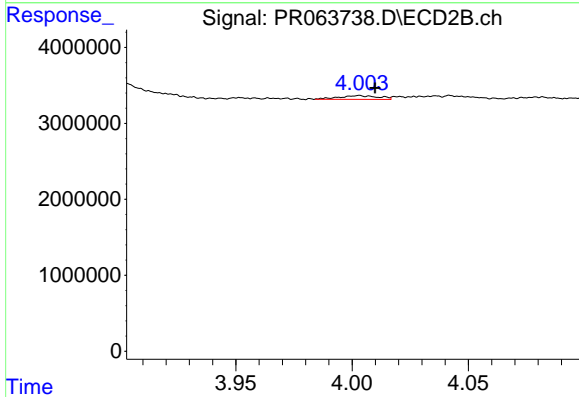
R.T.: 4.843 min  
 Delta R.T.: -0.009 min  
 Response: 517554  
 Conc: 5.92 ng/ml



#21 AR-1248-1

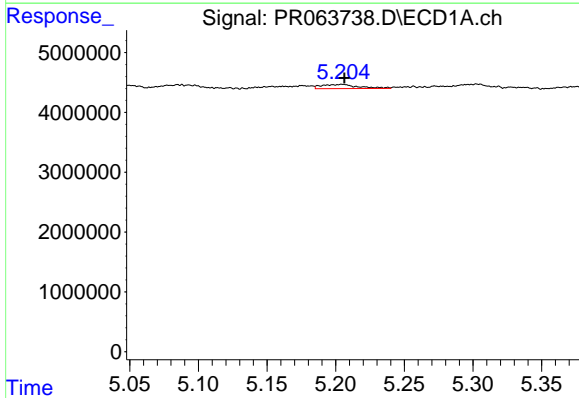
R.T.: 4.907 min  
 Delta R.T.: -0.003 min  
 Response: 2534205  
 Conc: 19.60 ng/ml

Instrument :  
 ECD\_R  
 ClientSampleId :



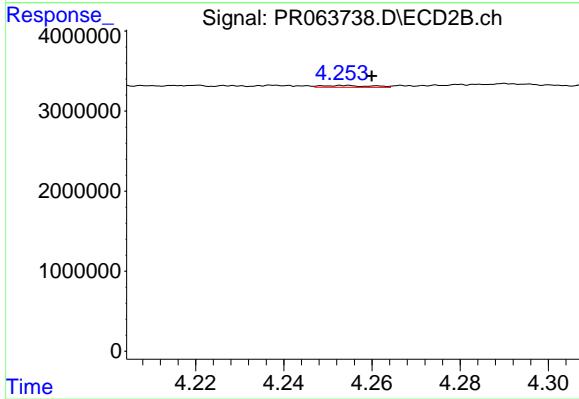
#21 AR-1248-1

R.T.: 4.003 min  
 Delta R.T.: -0.007 min  
 Response: 564349  
 Conc: 7.56 ng/ml



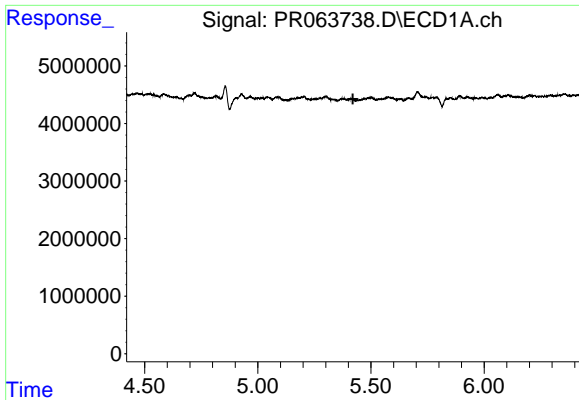
#22 AR-1248-2

R.T.: 5.205 min  
 Delta R.T.: -0.001 min  
 Response: 1331691  
 Conc: 7.85 ng/ml



#22 AR-1248-2

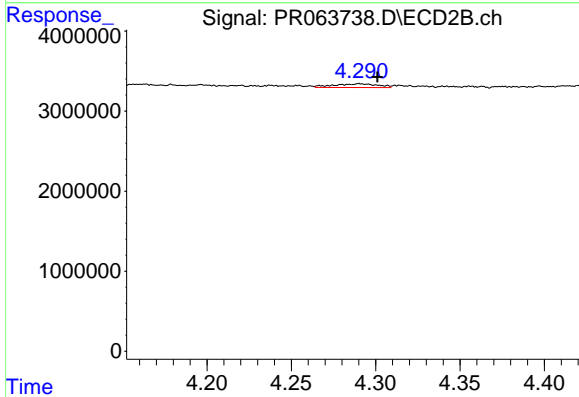
R.T.: 4.254 min  
 Delta R.T.: -0.006 min  
 Response: 175817  
 Conc: 1.65 ng/ml



#23 AR-1248-3

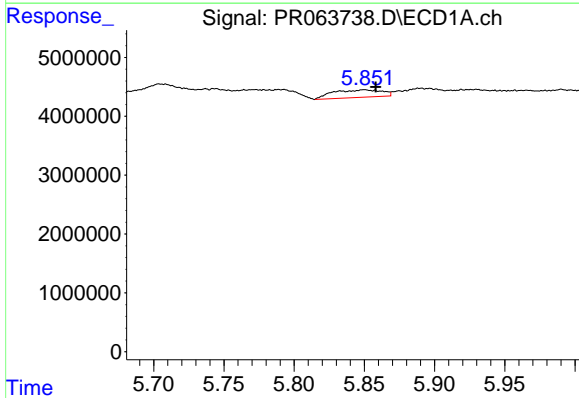
R.T.: 5.376 min  
 Delta R.T.: -0.044 min  
 Response: -86325  
 Conc: N.D.

Instrument :  
 ECD\_R  
 ClientSampleId :



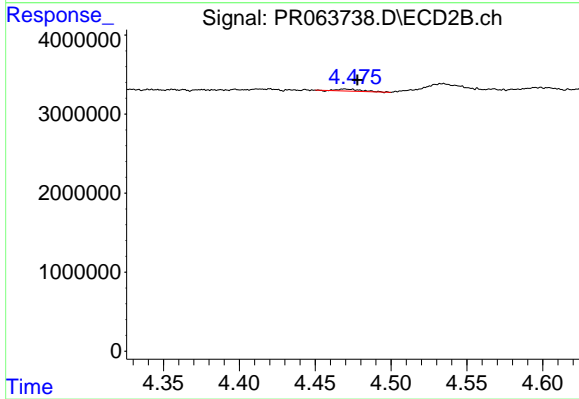
#23 AR-1248-3

R.T.: 4.290 min  
 Delta R.T.: -0.011 min  
 Response: 840266  
 Conc: 7.90 ng/ml



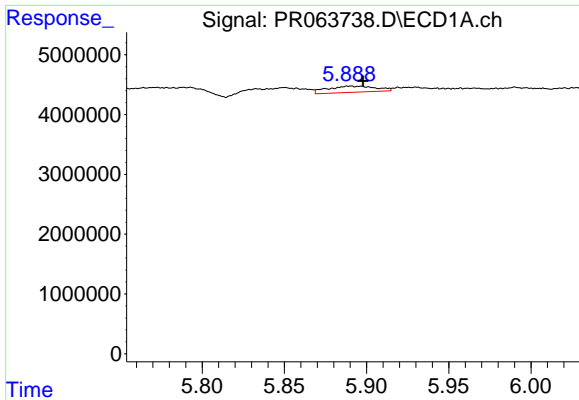
#24 AR-1248-4

R.T.: 5.850 min  
 Delta R.T.: -0.008 min  
 Response: 3107158  
 Conc: 14.26 ng/ml



#24 AR-1248-4

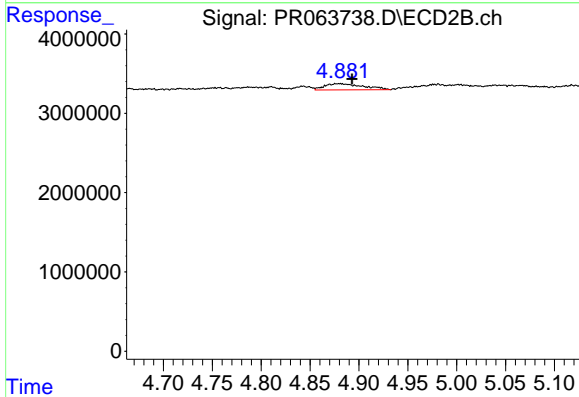
R.T.: 4.469 min  
 Delta R.T.: -0.008 min  
 Response: 272612  
 Conc: 2.10 ng/ml



#25 AR-1248-5

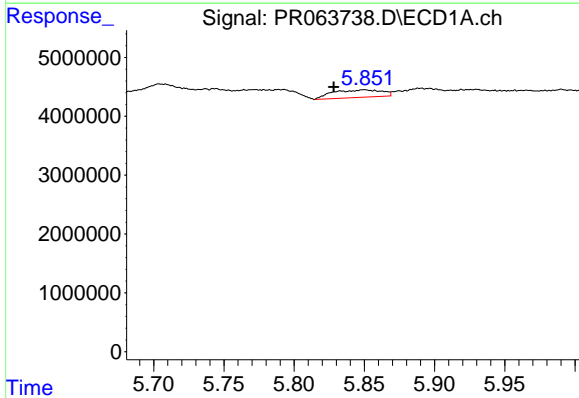
R.T.: 5.890 min  
 Delta R.T.: -0.008 min  
 Response: 2132530  
 Conc: 10.14 ng/ml

Instrument :  
 ECD\_R  
 ClientSampleId :



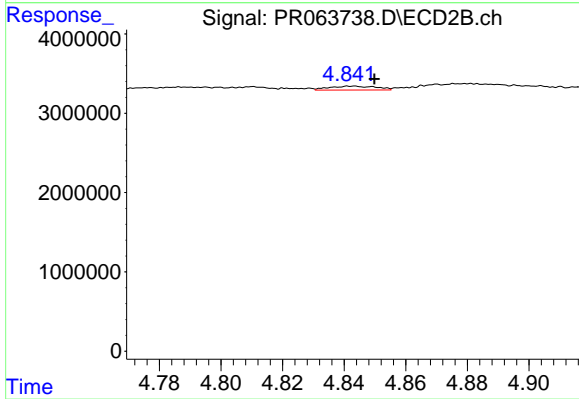
#25 AR-1248-5

R.T.: 4.881 min  
 Delta R.T.: -0.012 min  
 Response: 2146453  
 Conc: 16.70 ng/ml



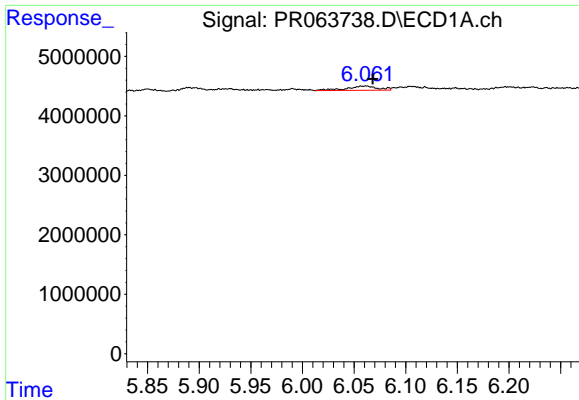
#26 AR-1254-1

R.T.: 5.850 min  
 Delta R.T.: 0.022 min  
 Response: 3107158  
 Conc: 14.16 ng/ml



#26 AR-1254-1

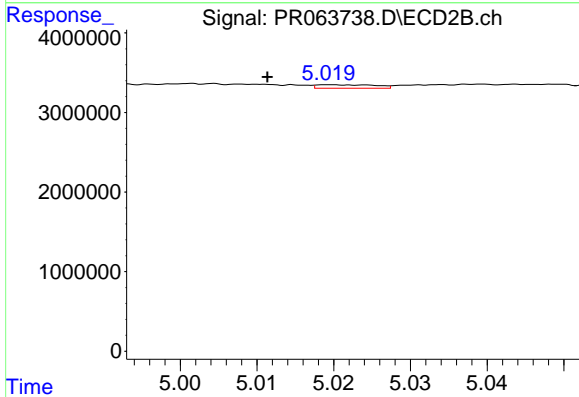
R.T.: 4.843 min  
 Delta R.T.: -0.007 min  
 Response: 517554  
 Conc: 2.62 ng/ml



#27 AR-1254-2

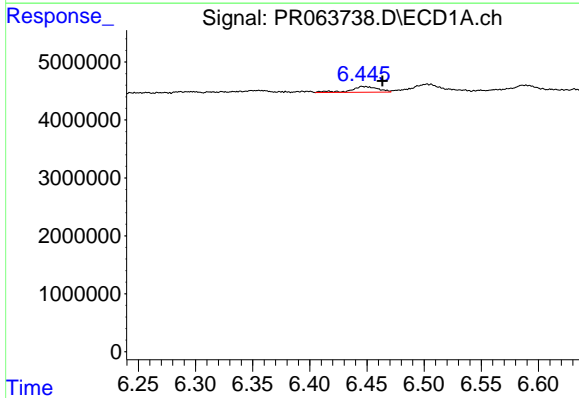
R.T.: 6.062 min  
 Delta R.T.: -0.007 min  
 Response: 1513576  
 Conc: 4.57 ng/ml

Instrument :  
 ECD\_R  
 ClientSampleId :



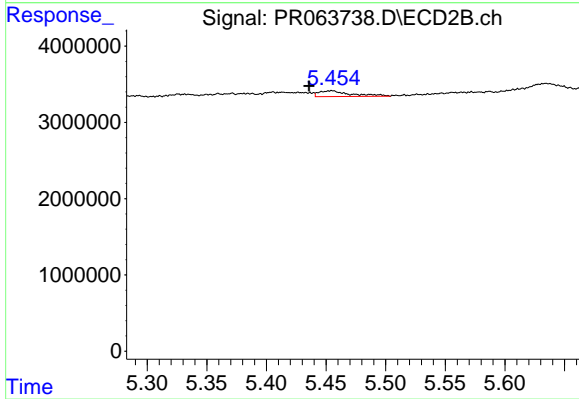
#27 AR-1254-2

R.T.: 5.020 min  
 Delta R.T.: 0.008 min  
 Response: 231588  
 Conc: 1.37 ng/ml



#28 AR-1254-3

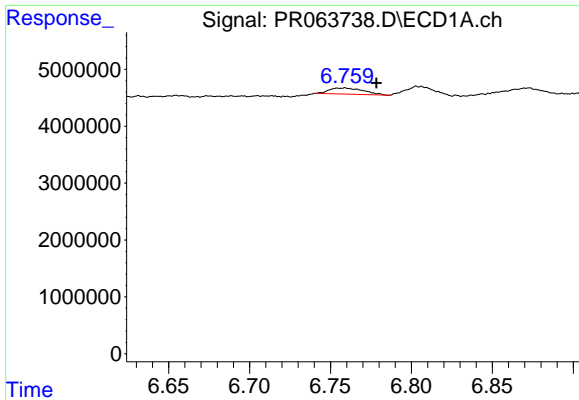
R.T.: 6.447 min  
 Delta R.T.: -0.017 min  
 Response: 1644399  
 Conc: 4.88 ng/ml



#28 AR-1254-3

R.T.: 5.455 min  
 Delta R.T.: 0.019 min  
 Response: 1424386  
 Conc: 5.25 ng/ml

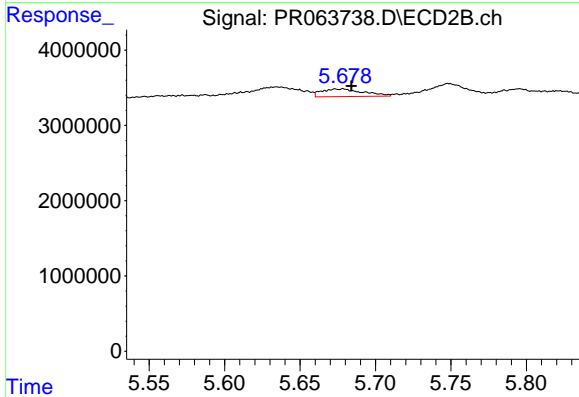




#29 AR-1254-4

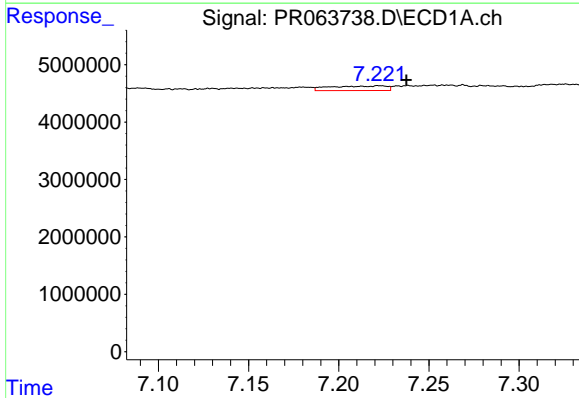
R.T.: 6.759 min  
 Delta R.T.: -0.020 min  
 Response: 1566662  
 Conc: 6.76 ng/ml

Instrument :  
 ECD\_R  
 ClientSampleId :



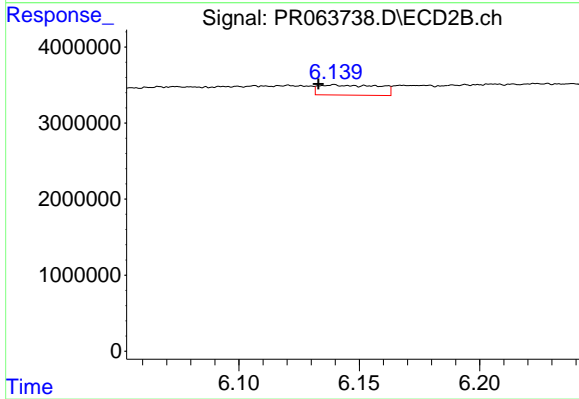
#29 AR-1254-4

R.T.: 5.679 min  
 Delta R.T.: -0.005 min  
 Response: 1943767  
 Conc: 11.59 ng/ml



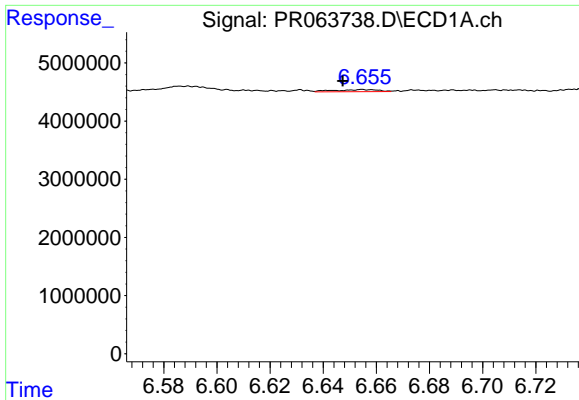
#30 AR-1254-5

R.T.: 7.223 min  
 Delta R.T.: -0.015 min  
 Response: 1728950  
 Conc: 7.08 ng/ml



#30 AR-1254-5

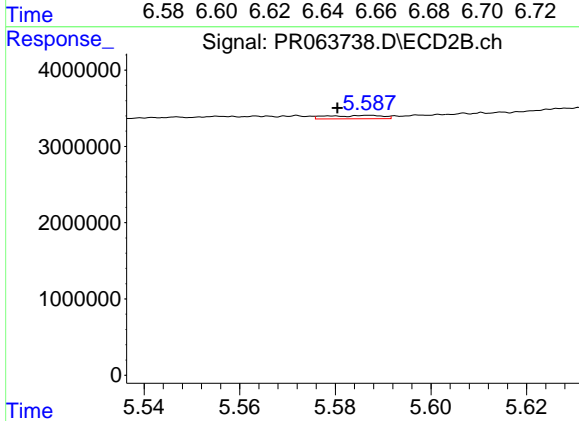
R.T.: 6.140 min  
 Delta R.T.: 0.007 min  
 Response: 2323631  
 Conc: 9.99 ng/ml



#31 AR-1260-1

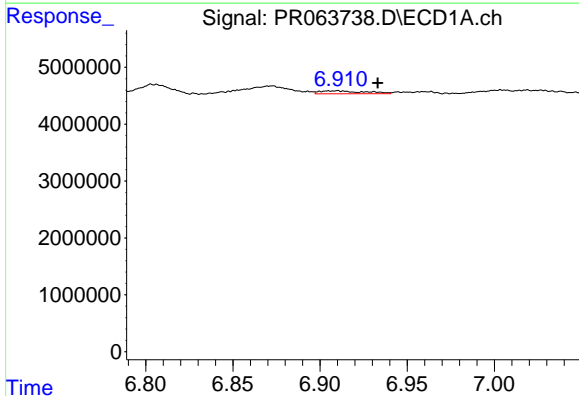
R.T.: 6.655 min  
 Delta R.T.: 0.008 min  
 Response: 406845  
 Conc: 1.69 ng/ml

Instrument :  
 ECD\_R  
 ClientSampleId :



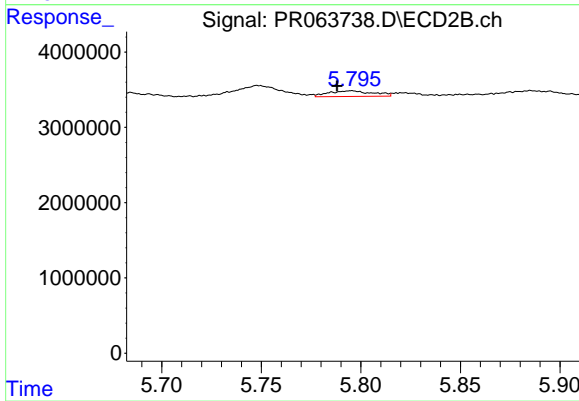
#31 AR-1260-1

R.T.: 5.587 min  
 Delta R.T.: 0.007 min  
 Response: 361191  
 Conc: 2.04 ng/ml



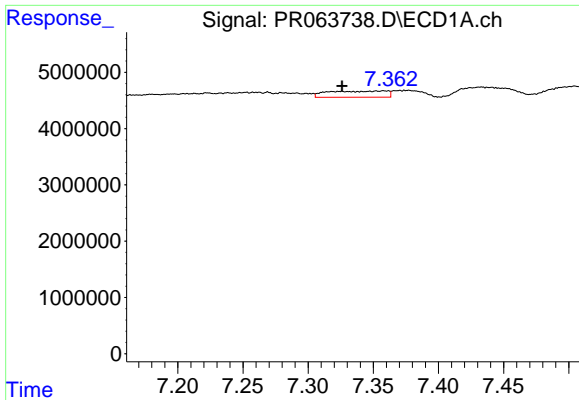
#32 AR-1260-2

R.T.: 6.910 min  
 Delta R.T.: -0.023 min  
 Response: 914592  
 Conc: 3.33 ng/ml



#32 AR-1260-2

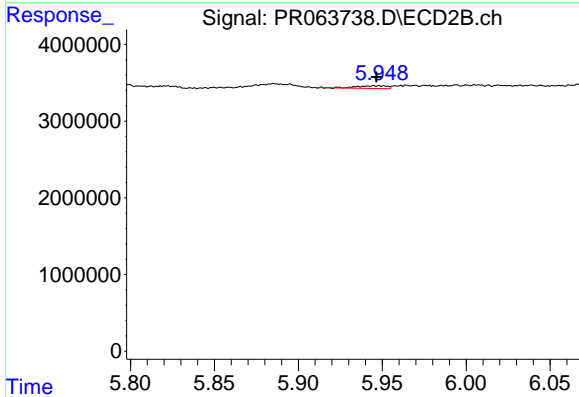
R.T.: 5.795 min  
 Delta R.T.: 0.007 min  
 Response: 1168523  
 Conc: 5.49 ng/ml



#33 AR-1260-3

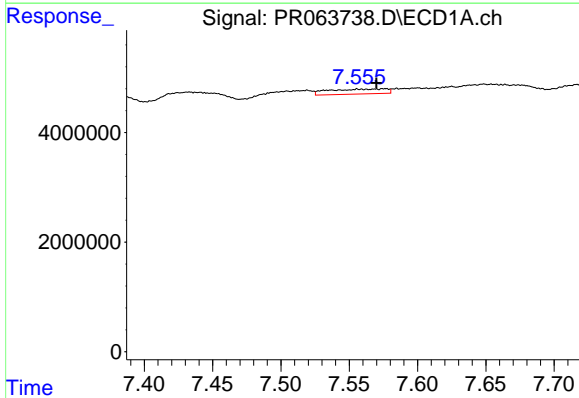
R.T.: 7.358 min  
 Delta R.T.: 0.032 min  
 Response: 3488990  
 Conc: 18.25 ng/ml

Instrument :  
 ECD\_R  
 ClientSampleId :



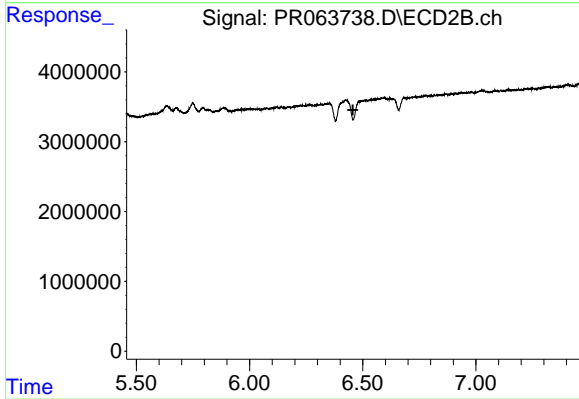
#33 AR-1260-3

R.T.: 5.949 min  
 Delta R.T.: 0.002 min  
 Response: 429911  
 Conc: 2.16 ng/ml



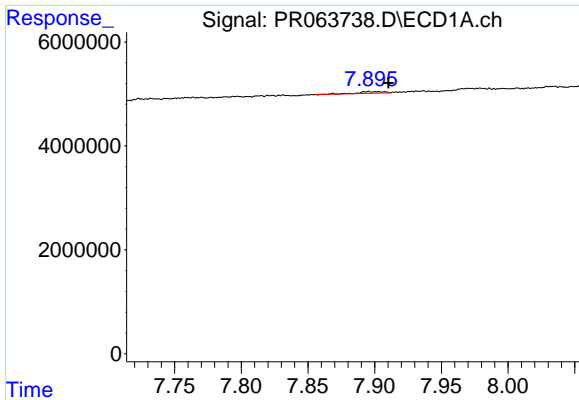
#34 AR-1260-4

R.T.: 7.556 min  
 Delta R.T.: -0.014 min  
 Response: 2669433  
 Conc: 12.21 ng/ml



#34 AR-1260-4

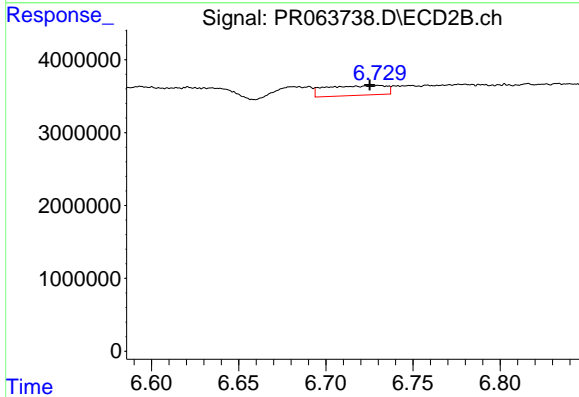
R.T.: 6.497 min  
 Delta R.T.: 0.040 min  
 Response: -654166  
 Conc: N.D.



#35 AR-1260-5

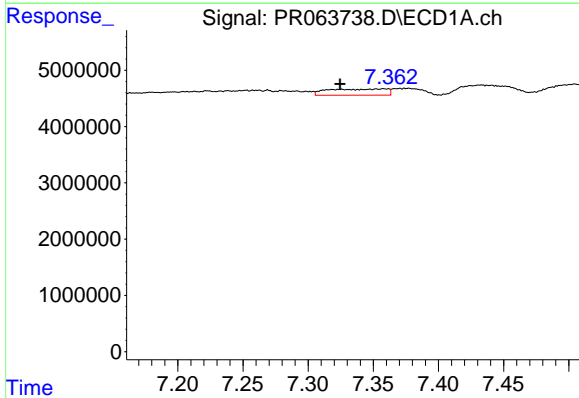
R.T.: 7.895 min  
 Delta R.T.: -0.015 min  
 Response: 397509  
 Conc: 0.92 ng/ml

Instrument :  
 ECD\_R  
 ClientSampleId :



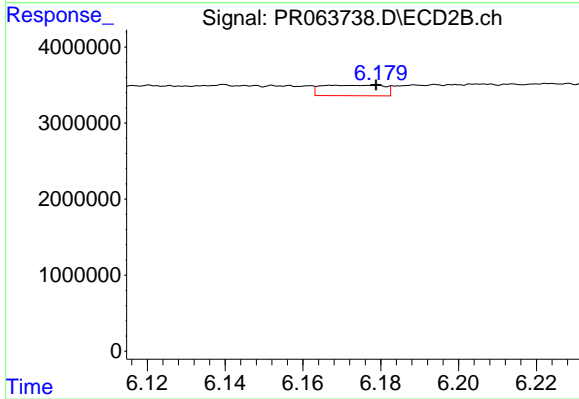
#35 AR-1260-5

R.T.: 6.731 min  
 Delta R.T.: 0.006 min  
 Response: 3187042  
 Conc: 8.05 ng/ml



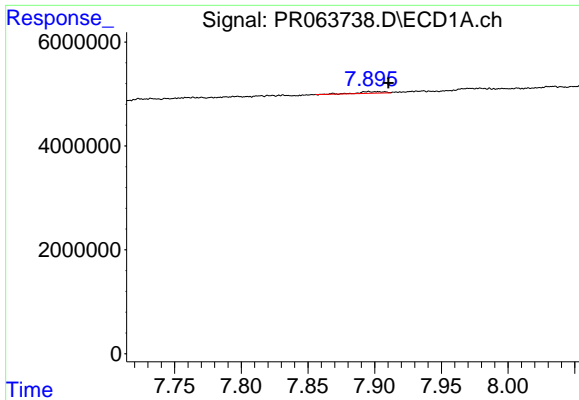
#36 AR-1262-1

R.T.: 7.358 min  
 Delta R.T.: 0.034 min  
 Response: 3488990  
 Conc: 11.45 ng/ml



#36 AR-1262-1

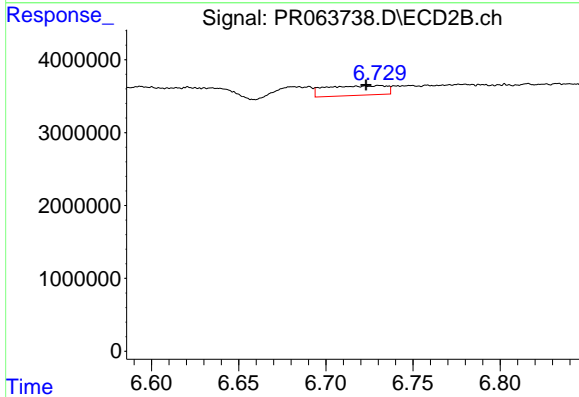
R.T.: 6.168 min  
 Delta R.T.: -0.011 min  
 Response: 1541610  
 Conc: 6.10 ng/ml



#37 AR-1262-2

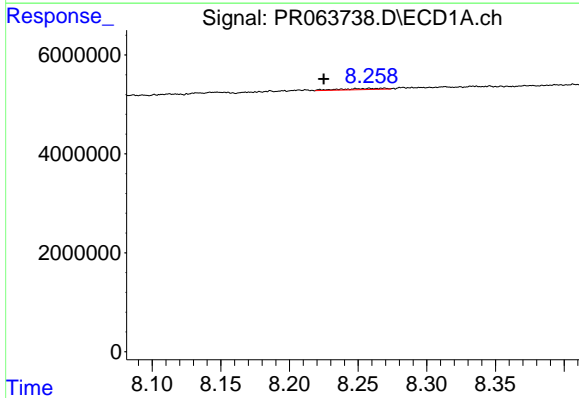
R.T.: 7.895 min  
 Delta R.T.: -0.015 min  
 Response: 397509  
 Conc: 0.78 ng/ml

Instrument :  
 ECD\_R  
 ClientSampleId :



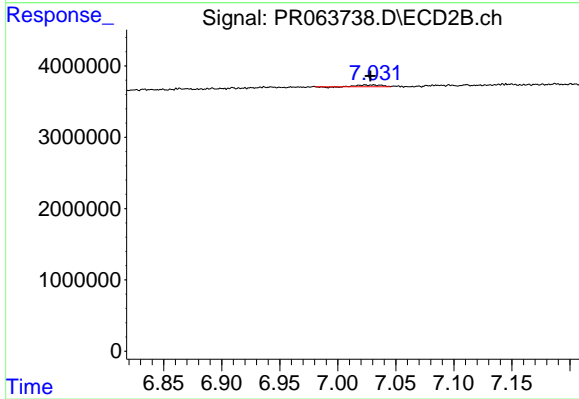
#37 AR-1262-2

R.T.: 6.731 min  
 Delta R.T.: 0.008 min  
 Response: 3187042  
 Conc: 6.95 ng/ml



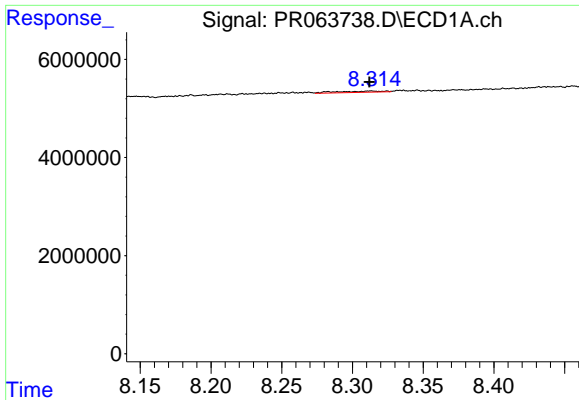
#38 AR-1262-3

R.T.: 8.269 min  
 Delta R.T.: 0.044 min  
 Response: 549794  
 Conc: 1.65 ng/ml



#38 AR-1262-3

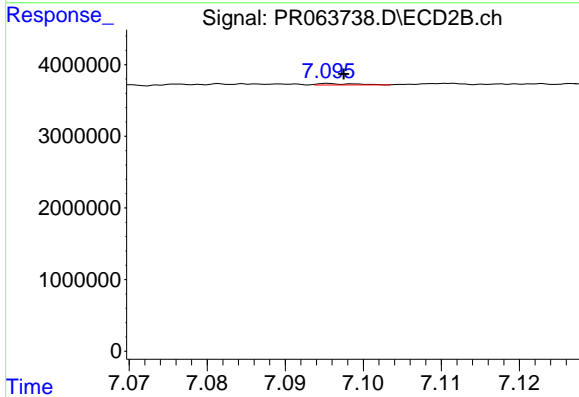
R.T.: 7.024 min  
 Delta R.T.: -0.004 min  
 Response: 315883  
 Conc: 1.78 ng/ml



#39 AR-1262-4

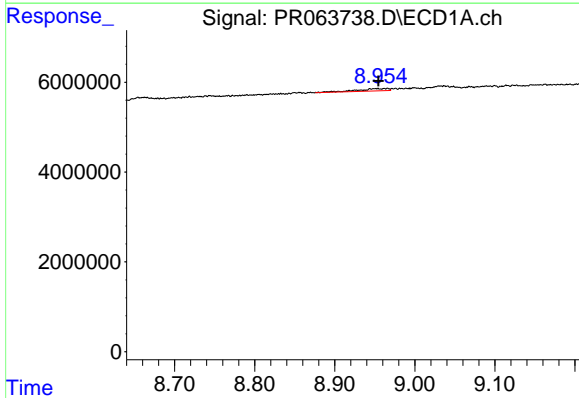
R.T.: 8.313 min  
 Delta R.T.: 0.001 min  
 Response: 559814  
 Conc: 2.25 ng/ml

Instrument :  
 ECD\_R  
 ClientSampleId :



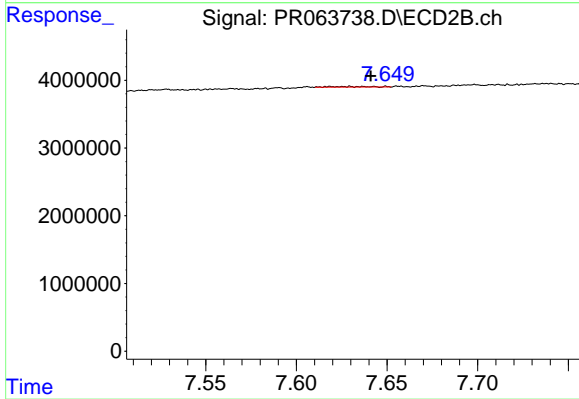
#39 AR-1262-4

R.T.: 7.097 min  
 Delta R.T.: 0.000 min  
 Response: 62731  
 Conc: 0.19 ng/ml



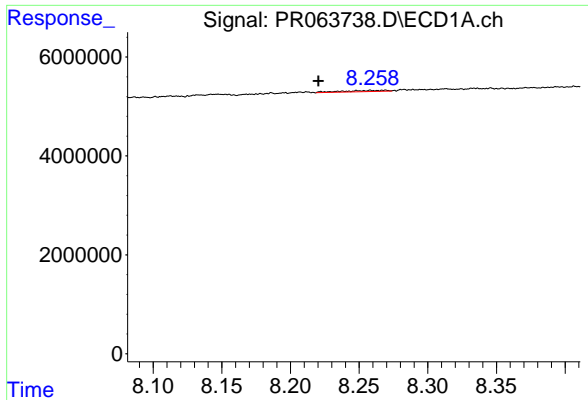
#40 AR-1262-5

R.T.: 8.953 min  
 Delta R.T.: -0.002 min  
 Response: 1431570  
 Conc: 8.02 ng/ml



#40 AR-1262-5

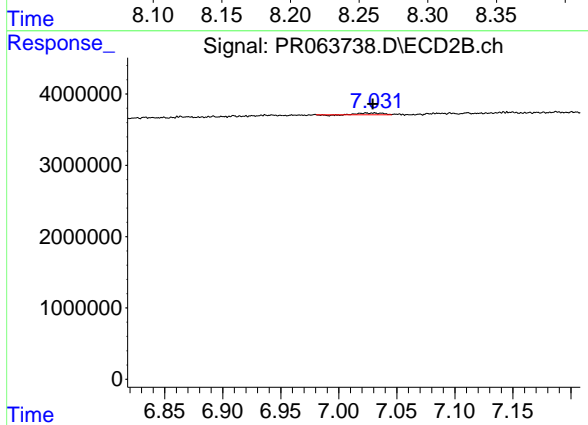
R.T.: 7.637 min  
 Delta R.T.: -0.004 min  
 Response: 145719  
 Conc: 0.97 ng/ml



#41 AR-1268-1

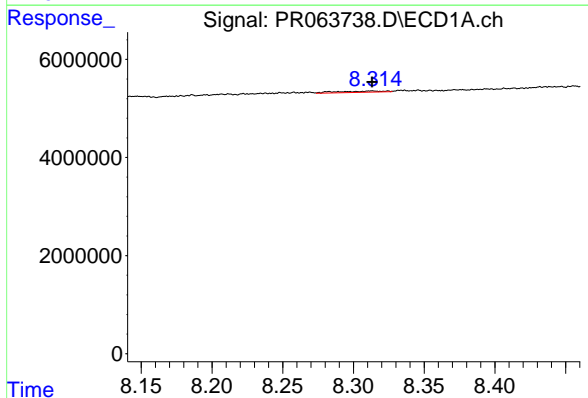
R.T.: 8.269 min  
 Delta R.T.: 0.049 min  
 Response: 549794  
 Conc: 0.92 ng/ml

Instrument :  
 ECD\_R  
 ClientSampleId :



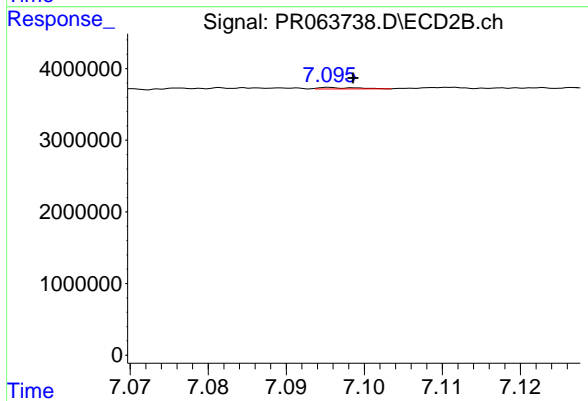
#41 AR-1268-1

R.T.: 7.024 min  
 Delta R.T.: -0.006 min  
 Response: 315883  
 Conc: 0.59 ng/ml



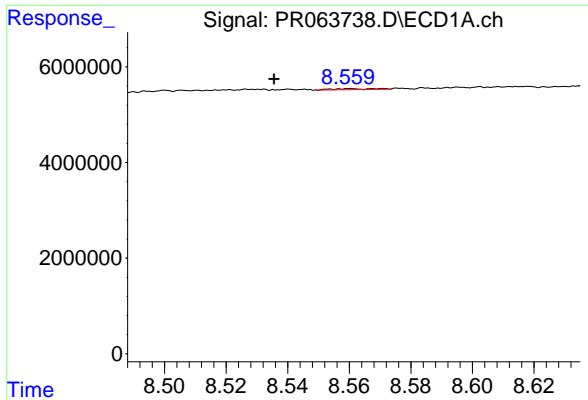
#42 AR-1268-2

R.T.: 8.313 min  
 Delta R.T.: 0.000 min  
 Response: 559814  
 Conc: 1.03 ng/ml



#42 AR-1268-2

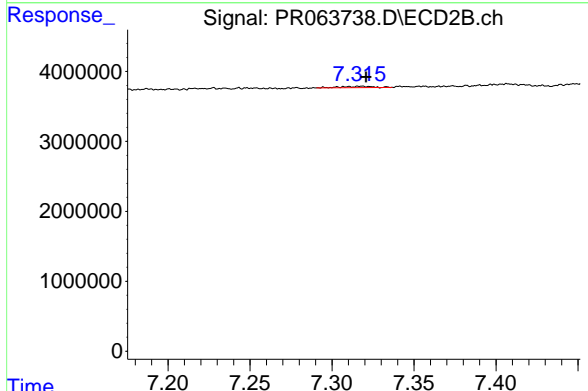
R.T.: 7.097 min  
 Delta R.T.: -0.002 min  
 Response: 62731  
 Conc: 0.13 ng/ml



#43 AR-1268-3

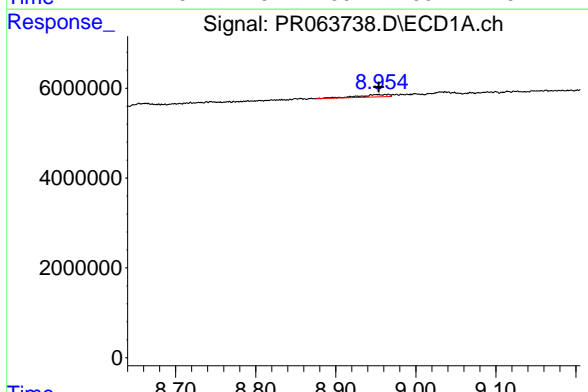
R.T.: 8.560 min  
 Delta R.T.: 0.025 min  
 Response: 205979  
 Conc: 0.44 ng/ml

Instrument :  
 ECD\_R  
 ClientSampleId :



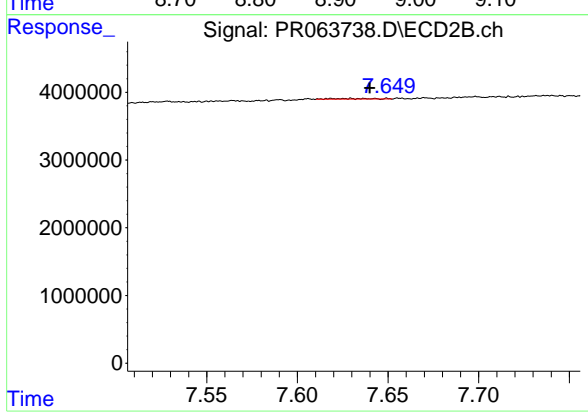
#43 AR-1268-3

R.T.: 7.317 min  
 Delta R.T.: -0.003 min  
 Response: 243818  
 Conc: 0.59 ng/ml



#44 AR-1268-4

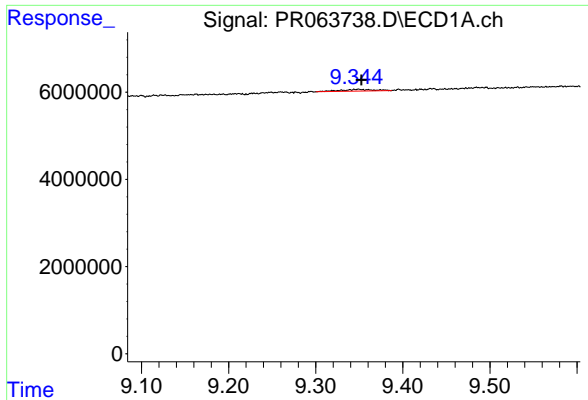
R.T.: 8.953 min  
 Delta R.T.: -0.001 min  
 Response: 1431570  
 Conc: 7.15 ng/ml



#44 AR-1268-4

R.T.: 7.637 min  
 Delta R.T.: -0.003 min  
 Response: 145719  
 Conc: 0.86 ng/ml

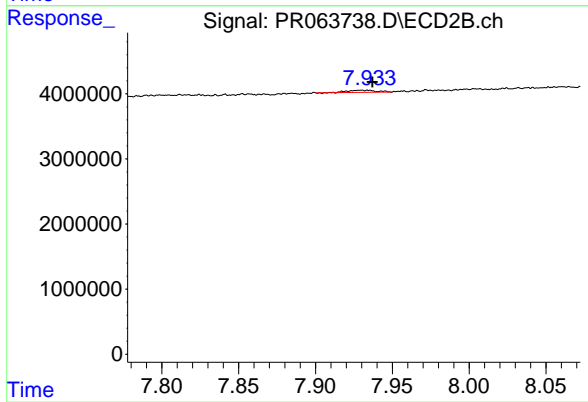




#45 AR-1268-5

R.T.: 9.349 min  
Delta R.T.: -0.003 min  
Response: 1054120  
Conc: 0.69 ng/ml

Instrument :  
ECD\_R  
ClientSampleId :



#45 AR-1268-5

R.T.: 7.934 min  
Delta R.T.: -0.003 min  
Response: 400714  
Conc: 0.30 ng/ml