

Data Path : Z:\pestpcbsrv\HPCHEM1\ECD_R\Data\PR100719\
 Data File : PR042021.D
 Signal(s) : Signal #1: ECD1A.ch Signal #2: ECD2B.ch
 Acq On : 07 Oct 2019 10:09
 Operator : SM\AJ
 Sample : K5084-01
 Misc :
 ALS Vial : 10 Sample Multiplier: 1

Instrument :
 ECD_R
 ClientSampleId :
 C0B07

Integration File signal 1: autoint1.e
 Integration File signal 2: autoint2.e
 Quant Time: Oct 08 02:31:44 2019
 Quant Method : Z:\pestpcbsrv\HPCHEM1\ECD_R\Method\PR100319CLP.M
 Quant Title : GC EXTRACTABLES
 QLast Update : Fri Oct 04 06:59:35 2019
 Response via : Initial Calibration
 Integrator: ChemStation

Volume Inj. : 1 µl
 Signal #1 Phase : ZB MR1 Signal #2 Phase: ZB MR2
 Signal #1 Info : 30Mx0.32mmx 0.5µm Signal #2 Info : 30M x 0.32mm x 0.25µm

| Compound | RT#1 | RT#2 | Resp#1 | Resp#2 | ng/ml | ng/ml |
|-----------------------------|--------|--------|----------|----------|---------|----------|
| ----- | | | | | | |
| System Monitoring Compounds | | | | | | |
| 1) SA Tetrachlo... | 4.718 | 3.983 | 103.2E6 | 408.0E6 | 25.368 | 26.681 |
| 2) SA Decachlor... | 10.636 | 9.096 | 124.1E6 | 423.5E6 | 36.111 | 42.720 |
| Target Compounds | | | | | | |
| 3) L1 AR-1016-1 | 5.925 | 0.000 | 6247723 | 0 | 43.517 | N.D. # |
| 4) L1 AR-1016-2 | 5.925 | 0.000 | 6247723 | 0 | 30.552 | N.D. # |
| 5) L1 AR-1016-3 | 6.006 | 0.000 | 5853581 | 0 | 48.148 | N.D. # |
| 6) L1 AR-1016-4 | 6.127f | 0.000 | 4715699 | 0 | 46.368 | N.D. # |
| 7) L1 AR-1016-5 | 6.372 | 0.000 | 1225963 | 0 | 12.312 | N.D. # |
| 8) L2 AR-1221-1 | 4.899 | 4.178 | 999513 | 2590317 | 24.345 | 15.333 # |
| 9) L2 AR-1221-2 | 5.030 | 4.289 | 1944110 | 5206650 | 67.007 | 42.366 # |
| 10) L2 AR-1221-3 | 5.030f | 4.426f | 1944110 | 15279368 | 19.982 | 39.228 # |
| 11) L3 AR-1232-1 | 5.030f | 4.426f | 1944110 | 15279368 | 23.233 | 44.843 # |
| 13) L3 AR-1232-3 | 5.925 | 0.000 | 6247723 | 0 | 69.485 | N.D. # |
| 14) L3 AR-1232-4 | 6.127f | 0.000 | 4715699 | 0 | 105.962 | N.D. # |
| 15) L3 AR-1232-5 | 6.177 | 0.000 | 1678201 | 0 | 51.084 | N.D. # |
| 16) L4 AR-1242-1 | 5.925 | 0.000 | 6247723 | 0 | 56.656 | N.D. # |
| 17) L4 AR-1242-2 | 5.925 | 0.000 | 6247723 | 0 | 40.243 | N.D. # |
| 18) L4 AR-1242-3 | 6.006 | 0.000 | 5853581 | 0 | 62.386 | N.D. # |
| 19) L4 AR-1242-4 | 6.127f | 0.000 | 4715699 | 0 | 60.701 | N.D. # |
| 20) L4 AR-1242-5 | 6.795 | 5.893 | 2490508 | 12909684 | 28.454 | 48.662 # |
| 21) L5 AR-1248-1 | 5.925 | 0.000 | 6247723 | 0 | 75.082 | N.D. # |
| 22) L5 AR-1248-2 | 6.177 | 0.000 | 1678201 | 0 | 14.624 | N.D. # |
| 23) L5 AR-1248-3 | 6.372 | 0.000 | 1225963 | 0 | 9.455 | N.D. # |
| 24) L5 AR-1248-4 | 6.795 | 0.000 | 2490508 | 0 | 16.230 | N.D. # |
| 25) L5 AR-1248-5 | 6.795 | 5.951 | 2490508 | 1023823 | 17.201 | 2.931 # |
| 26) L6 AR-1254-1 | 6.750 | 5.893 | 2650786 | 12909684 | 16.231 | 24.370 # |
| 27) L6 AR-1254-2 | 6.969 | 6.039 | 4624577 | 5075585 | 18.640 | 10.124 # |
| 28) L6 AR-1254-3 | 7.344 | 6.445 | 3368359 | 42475604 | 12.482 | 45.022 # |
| 29) L6 AR-1254-4 | 7.625 | 6.671 | 2538386 | 27382183 | 12.507 | 41.358 # |
| 30) L6 AR-1254-5 | 8.045 | 7.092 | 3490177 | 22129552 | 16.413 | 25.773 # |
| 31) L7 AR-1260-1 | 7.501 | 6.579 | 3314885 | 22889794 | 17.496 | 38.615 # |
| 32) L7 AR-1260-2 | 7.757 | 6.761 | 4389608 | 40296320 | 18.572 | 49.427 # |
| 33) L7 AR-1260-3 | 8.119 | 6.918 | 2387456 | 25666848 | 12.718 | 37.128 # |
| 34) L7 AR-1260-4 | 8.353 | 7.390 | 2181803 | 10074025 | 10.857 | 17.360 # |
| 35) L7 AR-1260-5 | 8.696 | 7.631 | 3453741 | 15485405 | 7.978 | 9.524 |
| 36) L8 AR-1262-1 | 8.170 | 7.092 | 23820137 | 22129552 | 253.054 | 50.781 # |
| 37) L8 AR-1262-2 | 8.696 | 7.631 | 3453741 | 15485405 | 8.007 | 8.995 |
| 38) L8 AR-1262-3 | 9.027 | 7.917 | 4979282 | 16925884 | 17.863 | 25.931 # |
| 39) L8 AR-1262-4 | 9.123 | 7.985 | 4376132 | 15775843 | 21.361 | 13.500 # |
| 40) L8 AR-1262-5 | 9.828 | 8.497 | 1725211 | 8950109 | 11.960 | 16.732 # |
| 41) L9 AR-1268-1 | 9.027 | 7.917 | 4979282 | 16925884 | 9.066 | 7.719 |
| 42) L9 AR-1268-2 | 9.123 | 7.985 | 4376132 | 15775843 | 8.802 | 7.928 |

Data Path : Z:\pestpcbsrv\HPCHEM1\ECD_R\Data\PR100719\
 Data File : PR042021.D
 Signal(s) : Signal #1: ECD1A.ch Signal #2: ECD2B.ch
 Acq On : 07 Oct 2019 10:09
 Operator : SM\AJ
 Sample : K5084-01
 Misc :
 ALS Vial : 10 Sample Multiplier: 1

Instrument :
 ECD_R
 ClientSampleId :
 C0B07

Integration File signal 1: autoint1.e
 Integration File signal 2: autoint2.e
 Quant Time: Oct 08 02:31:44 2019
 Quant Method : Z:\pestpcbsrv\HPCHEM1\ECD_R\Method\PR100319CLP.M
 Quant Title : GC EXTRACTABLES
 QLast Update : Fri Oct 04 06:59:35 2019
 Response via : Initial Calibration
 Integrator: ChemStation

Volume Inj. : 1 µl
 Signal #1 Phase : ZB MR1 Signal #2 Phase: ZB MR2
 Signal #1 Info : 30Mx0.32mmx 0.5µm Signal #2 Info : 30M x 0.32mm x 0.25µm

| | Compound | RT#1 | RT#2 | Resp#1 | Resp#2 | ng/ml | ng/ml |
|-----|--------------|--------|-------|---------|----------|-------|----------|
| 43) | L9 AR-1268-3 | 9.369 | 8.193 | 2880500 | 16361201 | 7.062 | 9.763 # |
| 44) | L9 AR-1268-4 | 9.828 | 8.497 | 1725211 | 8950109 | 9.833 | 13.869 # |
| 45) | L9 AR-1268-5 | 10.273 | 8.815 | 3127135 | 11566865 | 2.400 | 2.521 |

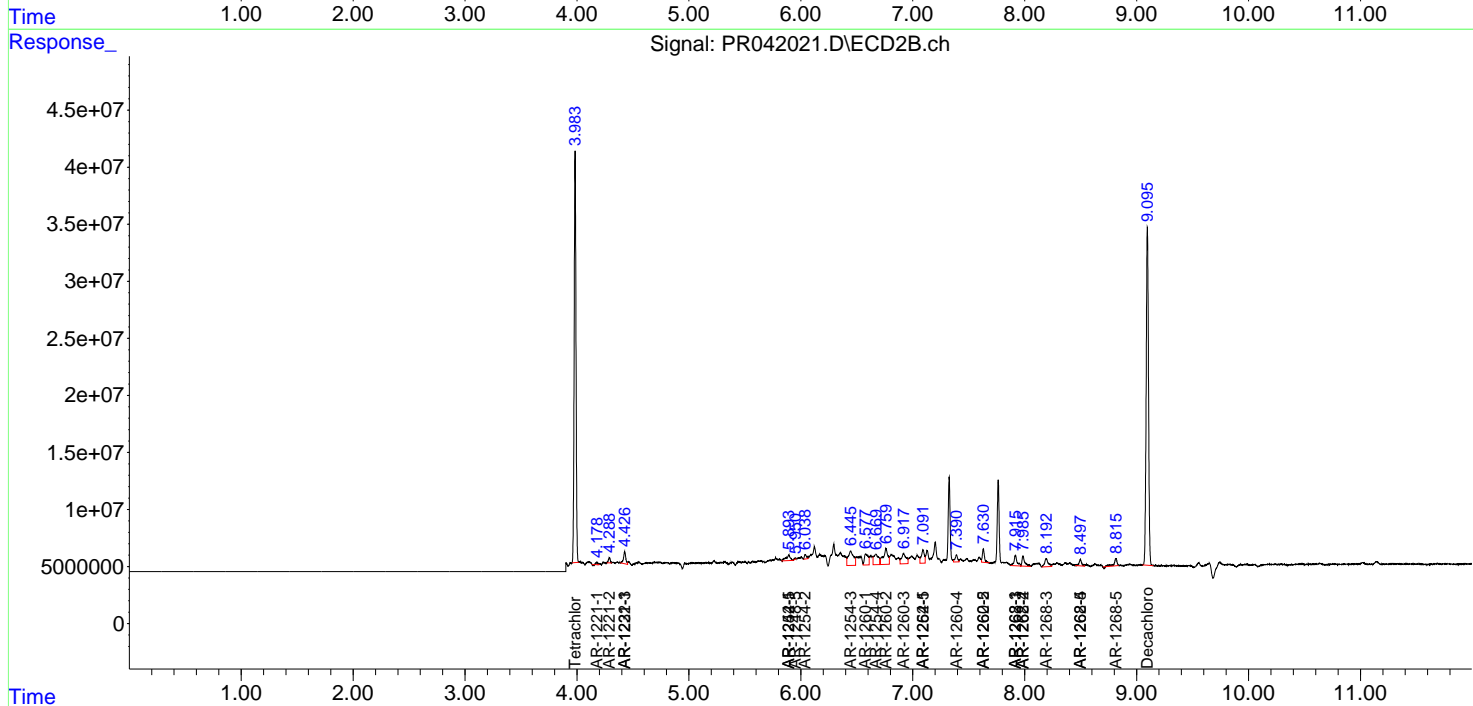
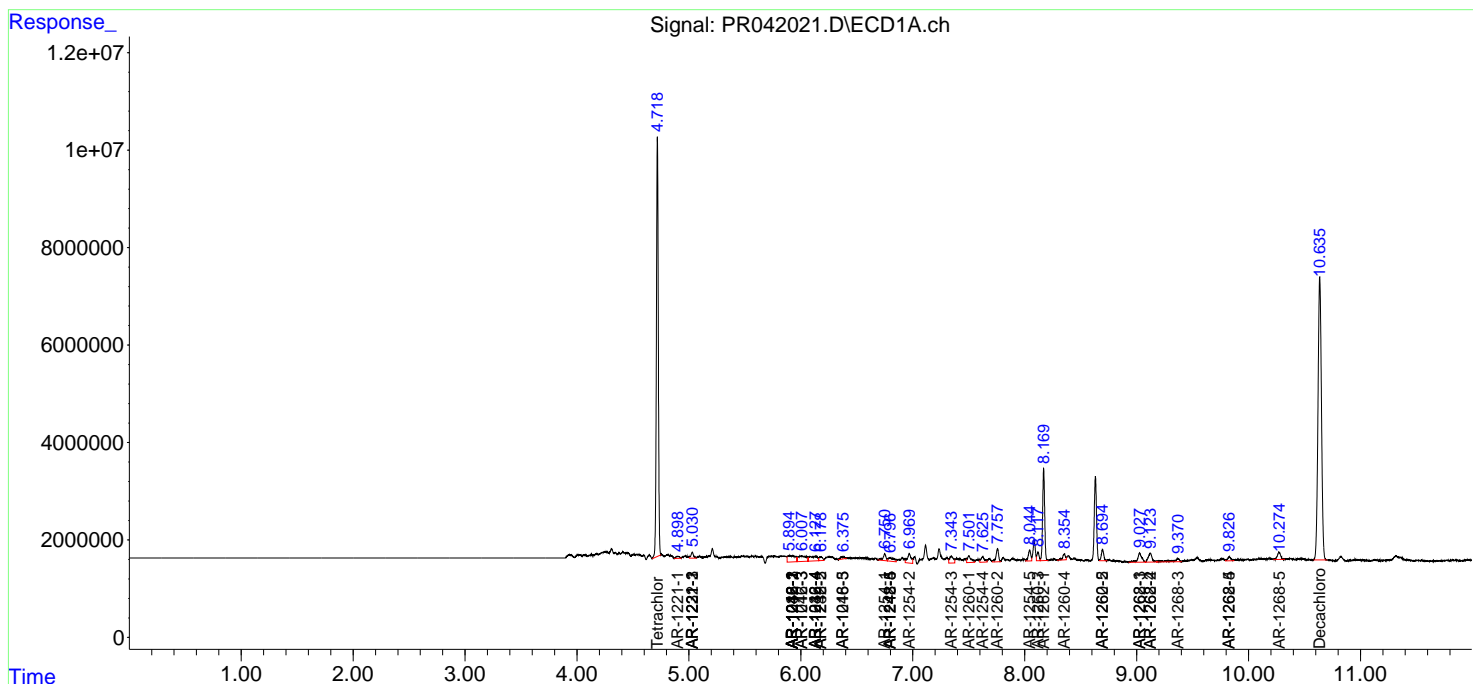
(f)=RT Delta > 1/2 Window (#)=Amounts differ by > 25% (m)=manual int.

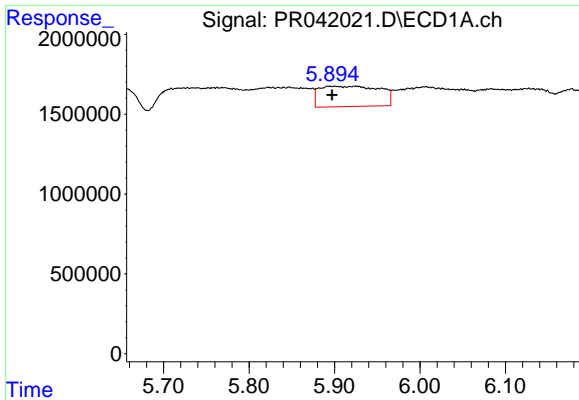
Data Path : Z:\pestpcbsrv\HPCHEM1\ECD_R\Data\PR100719\
 Data File : PR042021.D
 Signal(s) : Signal #1: ECD1A.ch Signal #2: ECD2B.ch
 Acq On : 07 Oct 2019 10:09
 Operator : SM\AJ
 Sample : K5084-01
 Misc :
 ALS Vial : 10 Sample Multiplier: 1

Instrument :
 ECD_R
 ClientSampled :
 C0B07

Integration File signal 1: autoint1.e
 Integration File signal 2: autoint2.e
 Quant Time: Oct 08 02:31:44 2019
 Quant Method : Z:\pestpcbsrv\HPCHEM1\ECD_R\Method\PR100319CLP.M
 Quant Title : GC EXTRACTABLES
 QLast Update : Fri Oct 04 06:59:35 2019
 Response via : Initial Calibration
 Integrator: ChemStation

Volume Inj. : 1 µl
 Signal #1 Phase : ZB MR1 Signal #2 Phase: ZB MR2
 Signal #1 Info : 30Mx0.32mmx 0.5µm Signal #2 Info : 30M x 0.32mm x 0.25µm

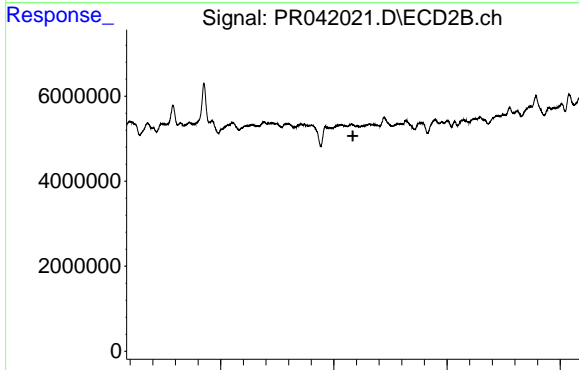




#3 AR-1016-1

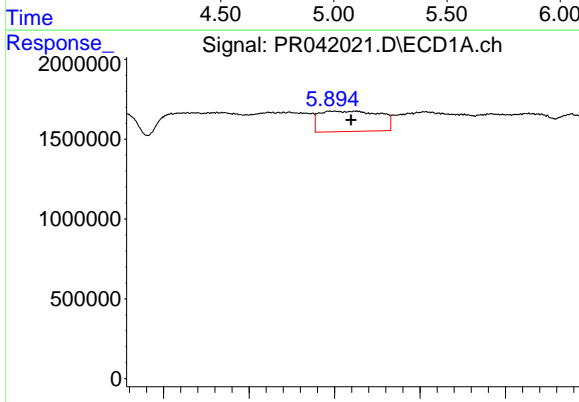
R.T.: 5.925 min
 Delta R.T.: 0.028 min
 Response: 6247723
 Conc: 43.52 ng/ml

Instrument :
 ECD_R
 ClientSampled :
 C0B07



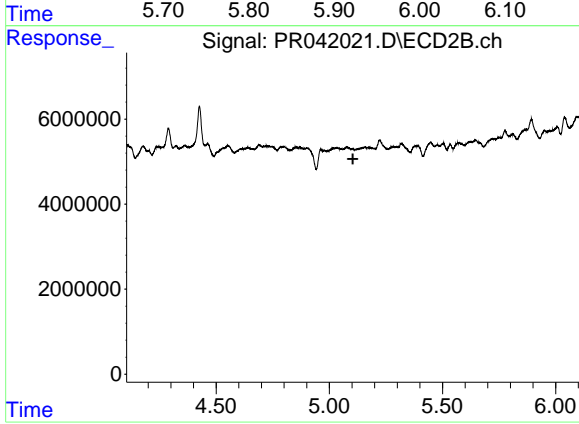
#3 AR-1016-1

R.T.: 0.000 min
 Exp R.T. : 5.084 min
 Response: 0
 Conc: N.D.



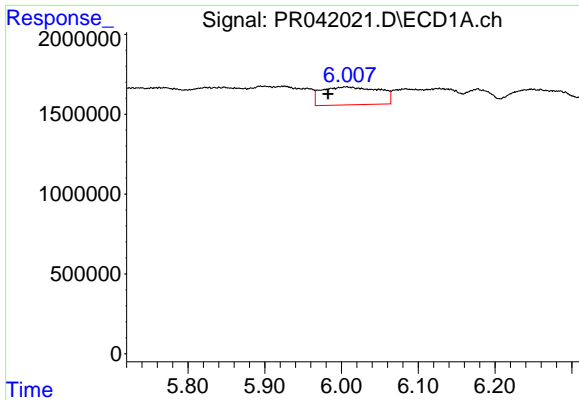
#4 AR-1016-2

R.T.: 5.925 min
 Delta R.T.: 0.006 min
 Response: 6247723
 Conc: 30.55 ng/ml



#4 AR-1016-2

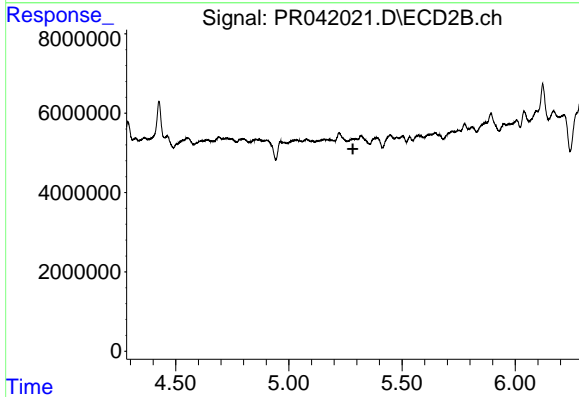
R.T.: 0.000 min
 Exp R.T. : 5.104 min
 Response: 0
 Conc: N.D.



#5 AR-1016-3

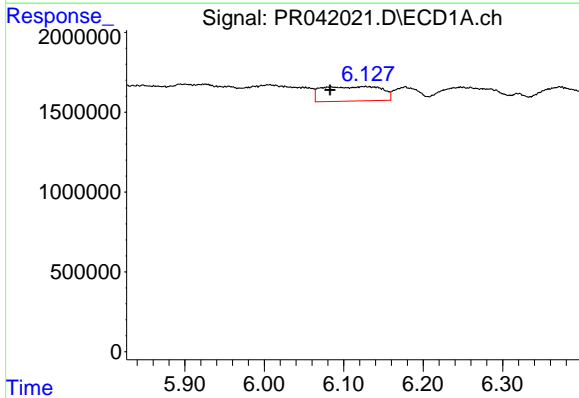
R.T.: 6.006 min
 Delta R.T.: 0.024 min
 Response: 5853581
 Conc: 48.15 ng/ml

Instrument :
 ECD_R
ClientSampleId :
 C0B07



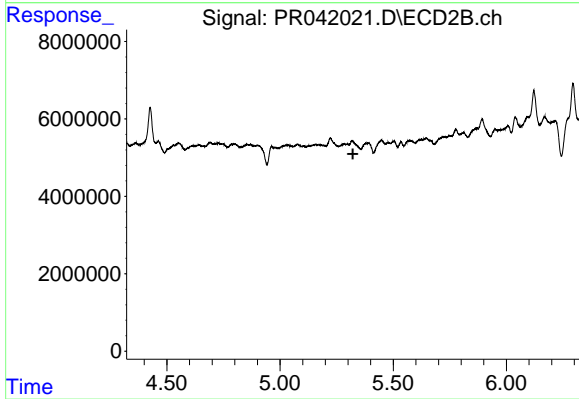
#5 AR-1016-3

R.T.: 0.000 min
 Exp R.T. : 5.283 min
 Response: 0
 Conc: N.D.



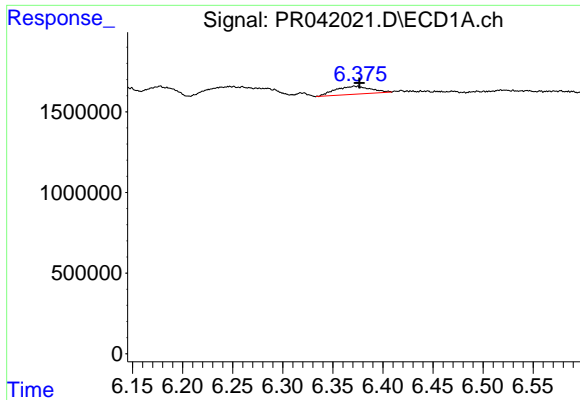
#6 AR-1016-4

R.T.: 6.127 min
 Delta R.T.: 0.044 min
 Response: 4715699
 Conc: 46.37 ng/ml



#6 AR-1016-4

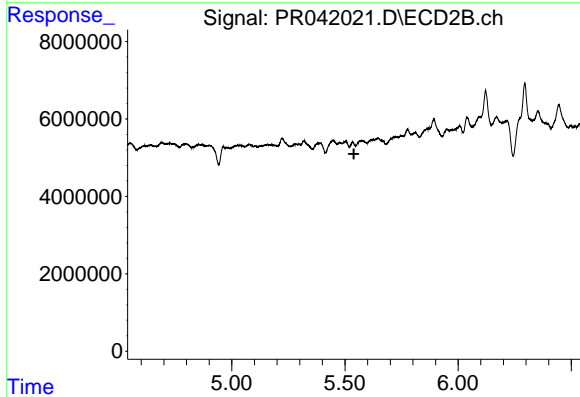
R.T.: 0.000 min
 Exp R.T. : 5.322 min
 Response: 0
 Conc: N.D.



#7 AR-1016-5

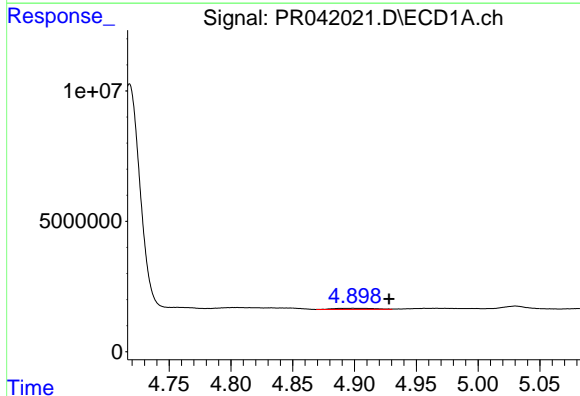
R.T.: 6.372 min
 Delta R.T.: -0.005 min
 Response: 1225963
 Conc: 12.31 ng/ml

Instrument :
 ECD_R
 ClientSampleId :
 C0B07



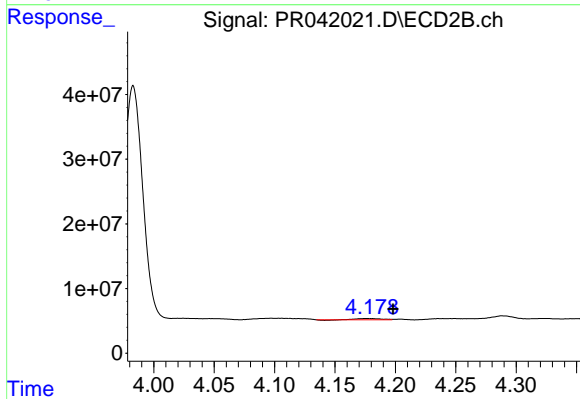
#7 AR-1016-5

R.T.: 0.000 min
 Exp R.T. : 5.539 min
 Response: 0
 Conc: N.D.



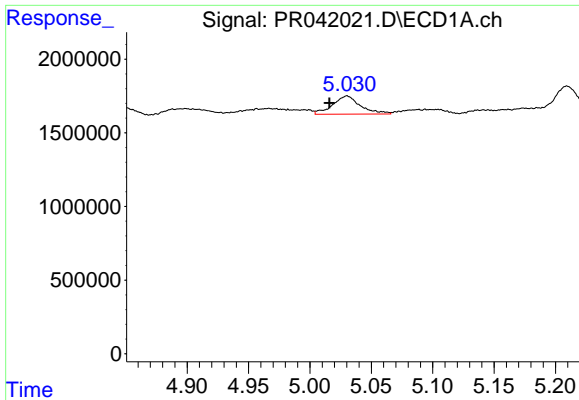
#8 AR-1221-1

R.T.: 4.899 min
 Delta R.T.: -0.029 min
 Response: 999513
 Conc: 24.35 ng/ml



#8 AR-1221-1

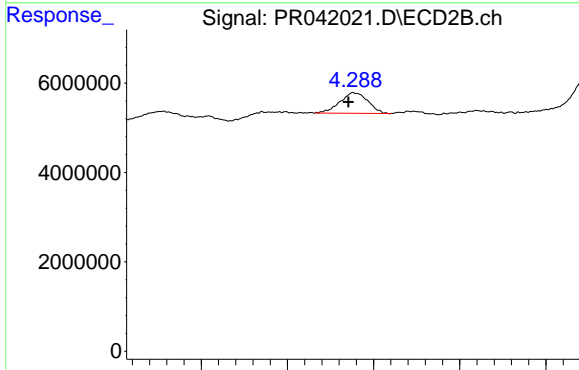
R.T.: 4.178 min
 Delta R.T.: -0.020 min
 Response: 2590317
 Conc: 15.33 ng/ml



#9 AR-1221-2

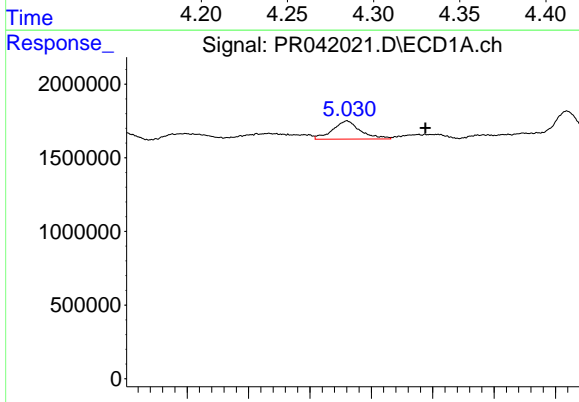
R.T.: 5.030 min
 Delta R.T.: 0.014 min
 Response: 1944110
 Conc: 67.01 ng/ml

Instrument :
 ECD_R
ClientSampleId :
 C0B07



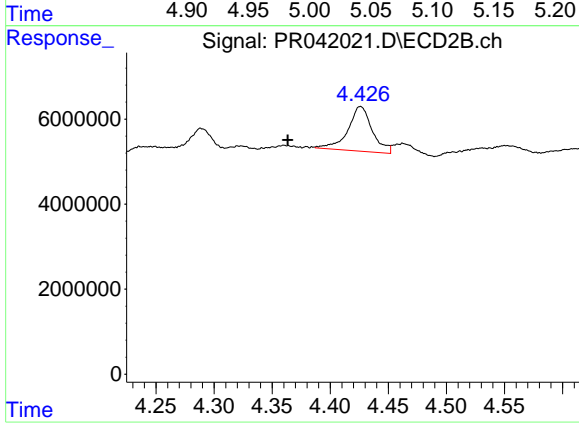
#9 AR-1221-2

R.T.: 4.289 min
 Delta R.T.: 0.003 min
 Response: 5206650
 Conc: 42.37 ng/ml



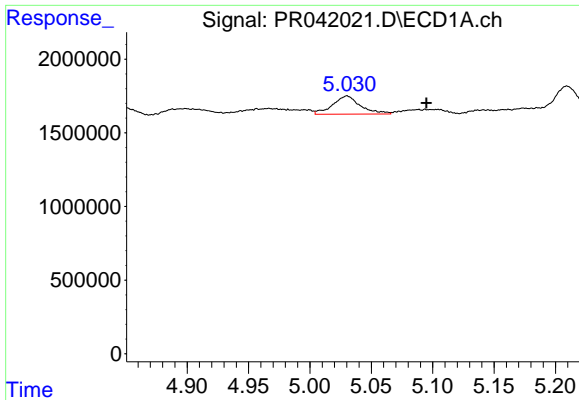
#10 AR-1221-3

R.T.: 5.030 min
 Delta R.T.: -0.064 min
 Response: 1944110
 Conc: 19.98 ng/ml



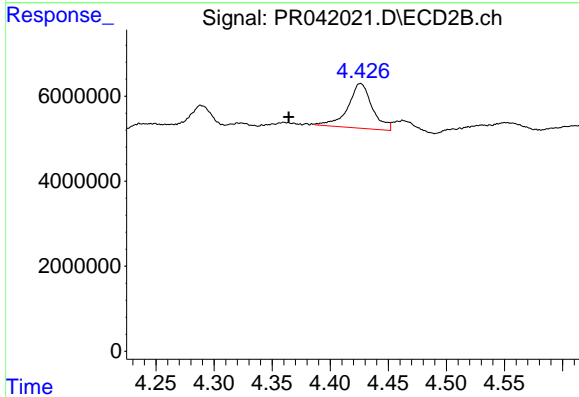
#10 AR-1221-3

R.T.: 4.426 min
 Delta R.T.: 0.063 min
 Response: 15279368
 Conc: 39.23 ng/ml

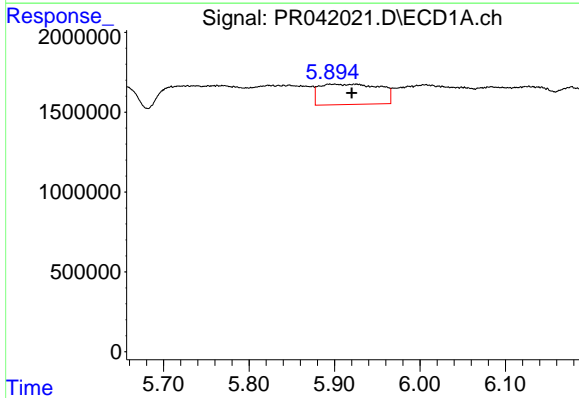


#11 AR-1232-1
 R.T.: 5.030 min
 Delta R.T.: -0.065 min
 Response: 1944110
 Conc: 23.23 ng/ml

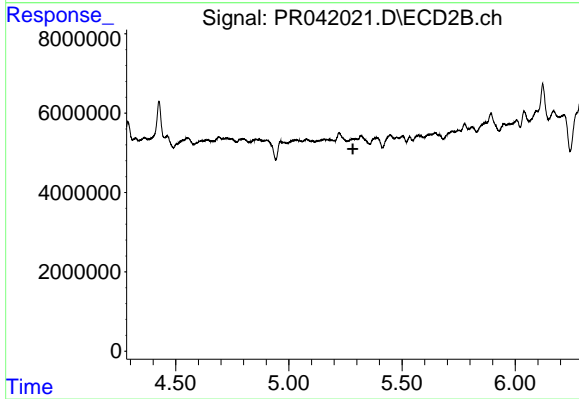
Instrument :
 ECD_R
 ClientSampleId :
 C0B07



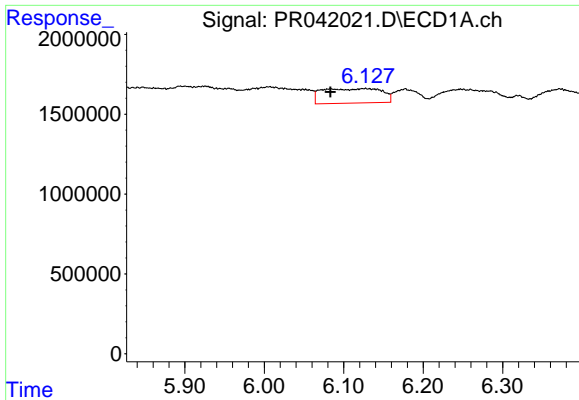
#11 AR-1232-1
 R.T.: 4.426 min
 Delta R.T.: 0.062 min
 Response: 15279368
 Conc: 44.84 ng/ml



#13 AR-1232-3
 R.T.: 5.925 min
 Delta R.T.: 0.005 min
 Response: 6247723
 Conc: 69.48 ng/ml



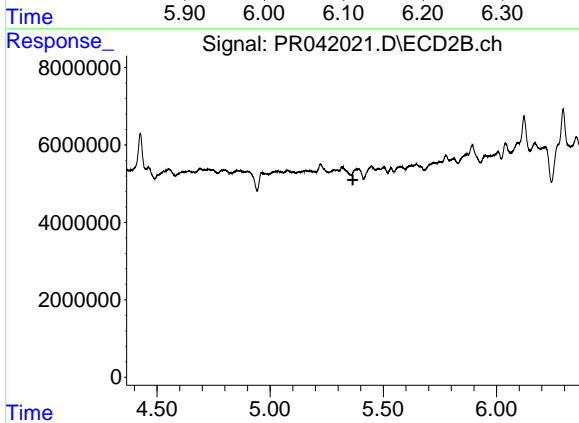
#13 AR-1232-3
 R.T.: 0.000 min
 Exp R.T. : 5.283 min
 Response: 0
 Conc: N.D.



#14 AR-1232-4

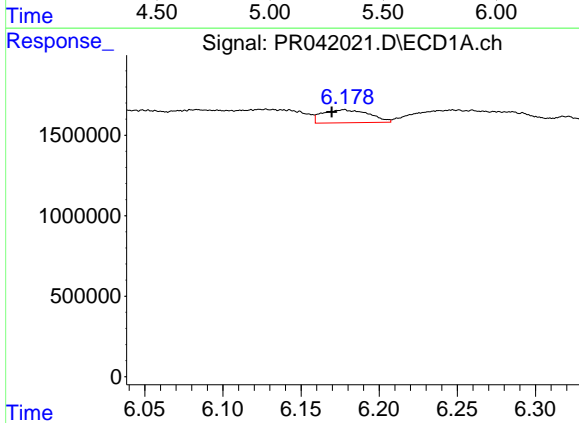
R.T.: 6.127 min
 Delta R.T.: 0.044 min
 Response: 4715699
 Conc: 105.96 ng/ml

Instrument :
 ECD_R
 ClientSampleId :
 C0B07



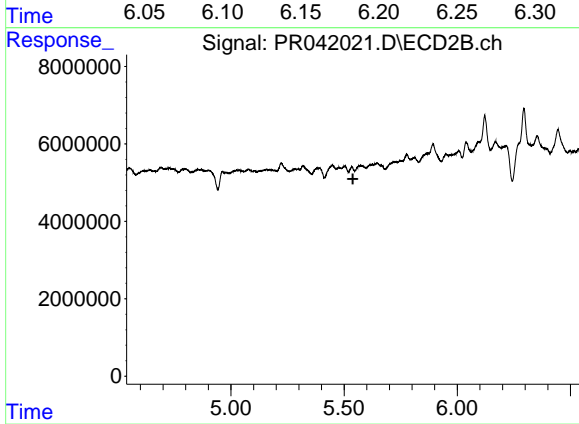
#14 AR-1232-4

R.T.: 0.000 min
 Exp R.T. : 5.365 min
 Response: 0
 Conc: N.D.



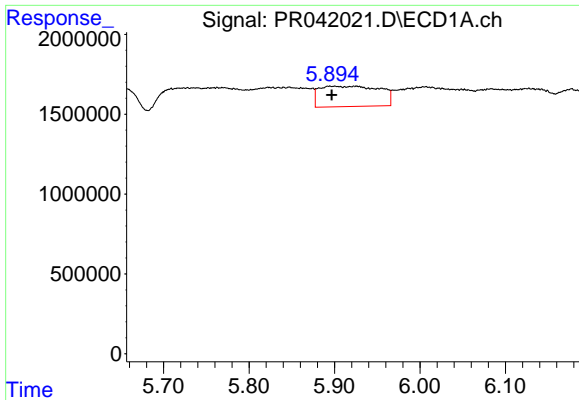
#15 AR-1232-5

R.T.: 6.177 min
 Delta R.T.: 0.007 min
 Response: 1678201
 Conc: 51.08 ng/ml



#15 AR-1232-5

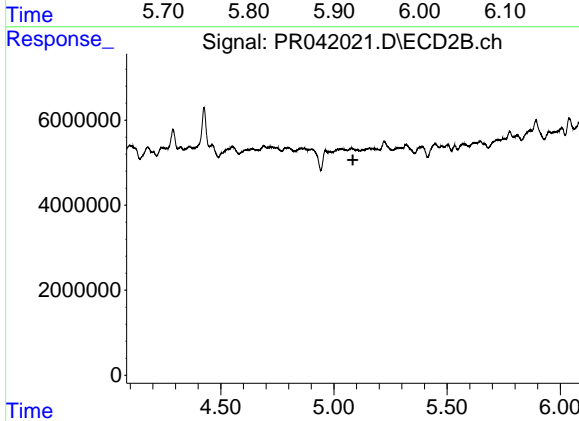
R.T.: 0.000 min
 Exp R.T. : 5.539 min
 Response: 0
 Conc: N.D.



#16 AR-1242-1

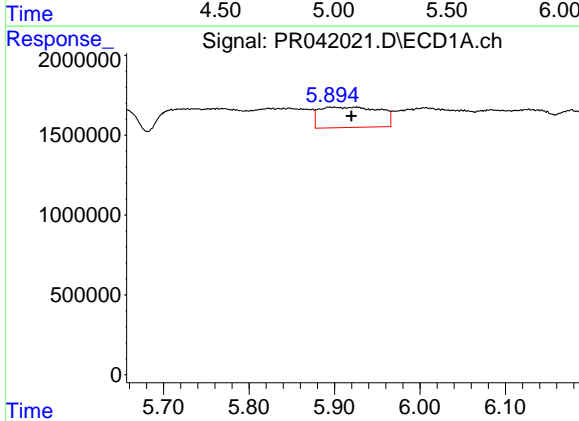
R.T.: 5.925 min
 Delta R.T.: 0.028 min
 Response: 6247723
 Conc: 56.66 ng/ml

Instrument :
 ECD_R
 ClientSampled :
 C0B07



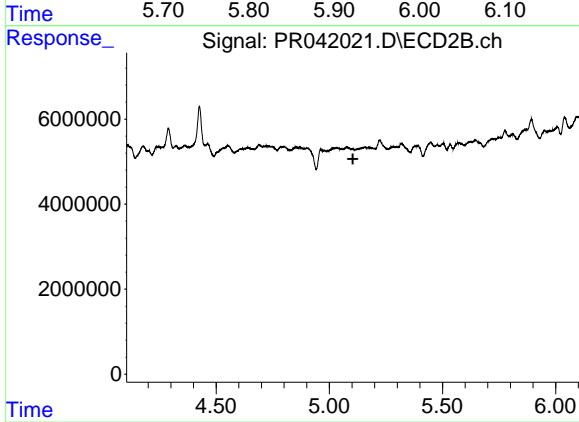
#16 AR-1242-1

R.T.: 0.000 min
 Exp R.T. : 5.084 min
 Response: 0
 Conc: N.D.



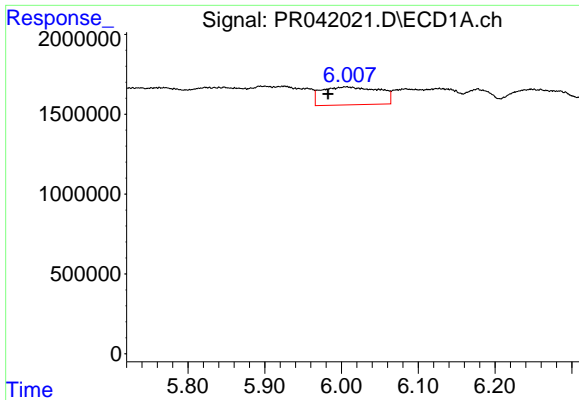
#17 AR-1242-2

R.T.: 5.925 min
 Delta R.T.: 0.005 min
 Response: 6247723
 Conc: 40.24 ng/ml



#17 AR-1242-2

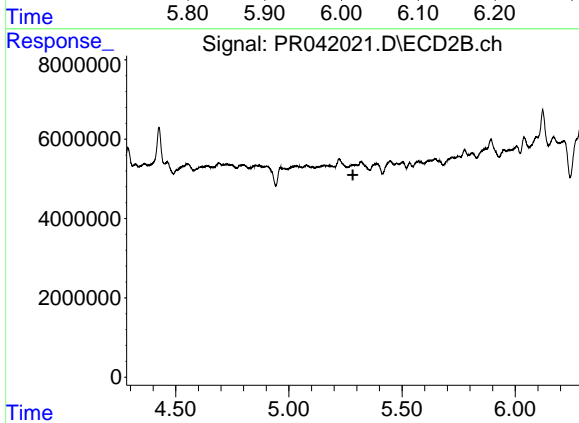
R.T.: 0.000 min
 Exp R.T. : 5.104 min
 Response: 0
 Conc: N.D.



#18 AR-1242-3

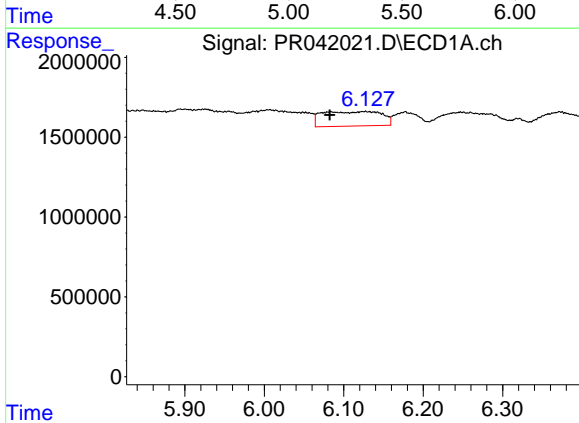
R.T.: 6.006 min
 Delta R.T.: 0.024 min
 Response: 5853581
 Conc: 62.39 ng/ml

Instrument :
 ECD_R
 ClientSampleId :
 C0B07



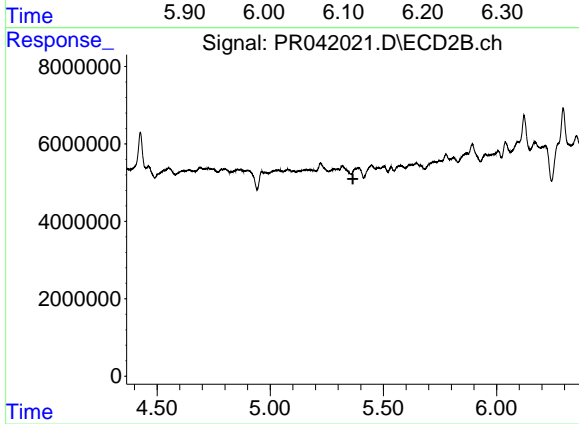
#18 AR-1242-3

R.T.: 0.000 min
 Exp R.T. : 5.283 min
 Response: 0
 Conc: N.D.



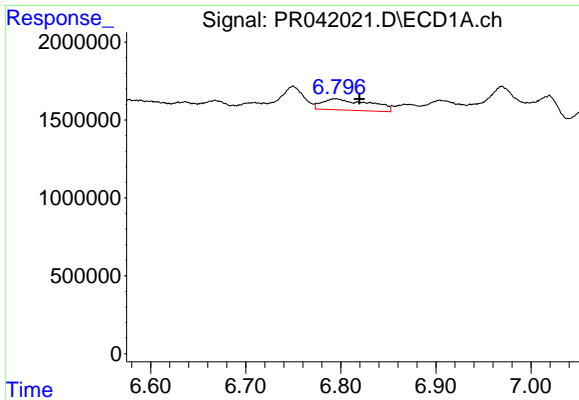
#19 AR-1242-4

R.T.: 6.127 min
 Delta R.T.: 0.045 min
 Response: 4715699
 Conc: 60.70 ng/ml



#19 AR-1242-4

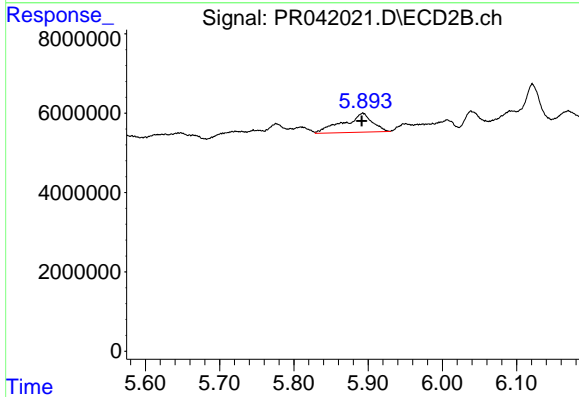
R.T.: 0.000 min
 Exp R.T. : 5.365 min
 Response: 0
 Conc: N.D.



#20 AR-1242-5

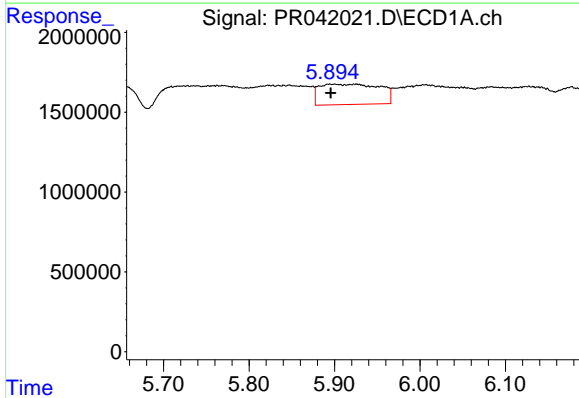
R.T.: 6.795 min
 Delta R.T.: -0.025 min
 Response: 2490508
 Conc: 28.45 ng/ml

Instrument :
 ECD_R
 ClientSampleId :
 C0B07



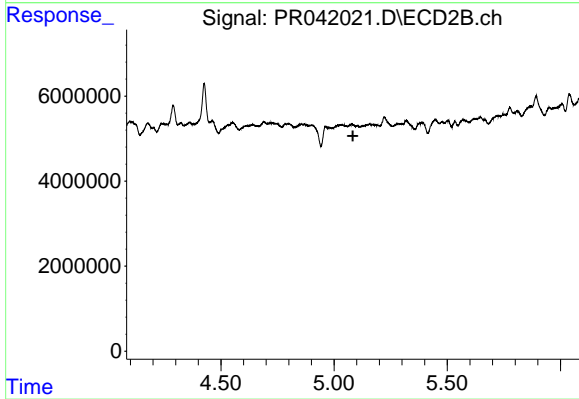
#20 AR-1242-5

R.T.: 5.893 min
 Delta R.T.: 0.002 min
 Response: 12909684
 Conc: 48.66 ng/ml



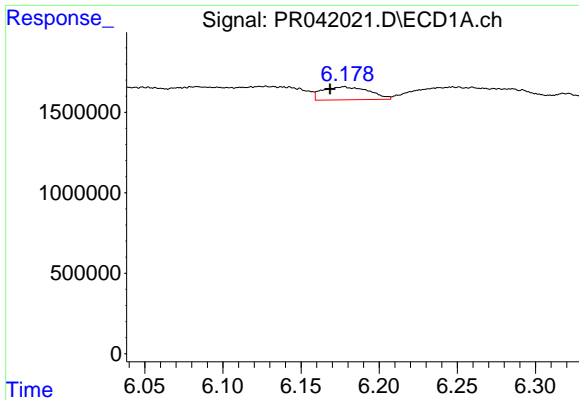
#21 AR-1248-1

R.T.: 5.925 min
 Delta R.T.: 0.029 min
 Response: 6247723
 Conc: 75.08 ng/ml



#21 AR-1248-1

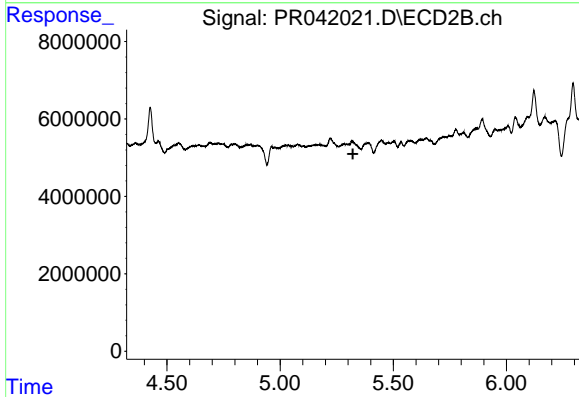
R.T.: 0.000 min
 Exp R.T. : 5.083 min
 Response: 0
 Conc: N.D.



#22 AR-1248-2

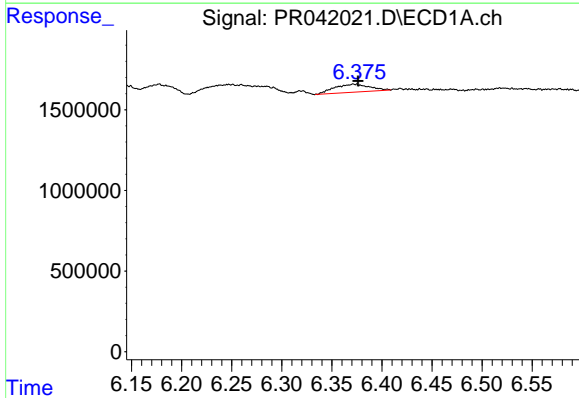
R.T.: 6.177 min
 Delta R.T.: 0.009 min
 Response: 1678201
 Conc: 14.62 ng/ml

Instrument :
 ECD_R
 ClientSampleId :
 C0B07



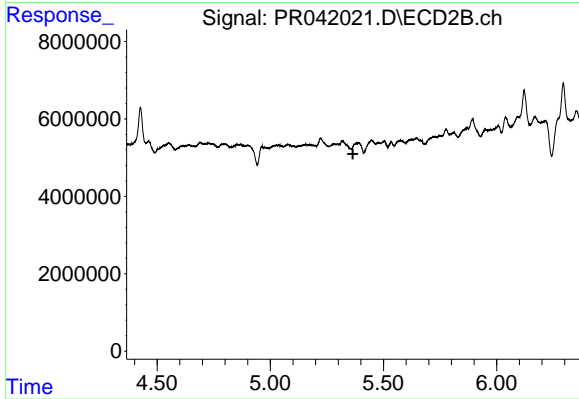
#22 AR-1248-2

R.T.: 0.000 min
 Exp R.T. : 5.321 min
 Response: 0
 Conc: N.D.



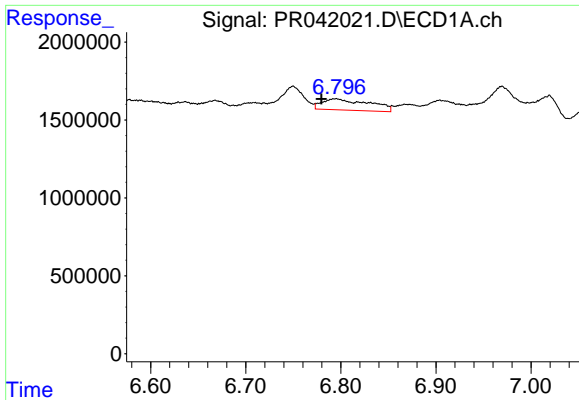
#23 AR-1248-3

R.T.: 6.372 min
 Delta R.T.: -0.004 min
 Response: 1225963
 Conc: 9.46 ng/ml



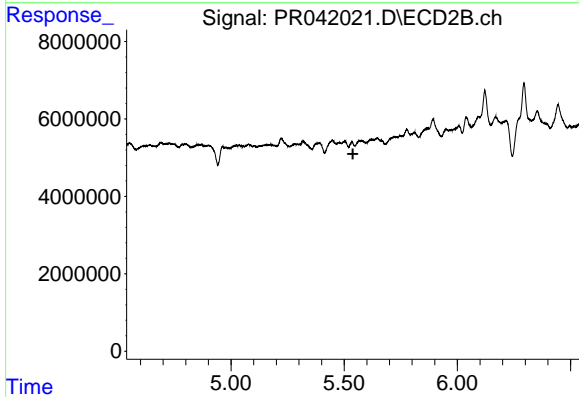
#23 AR-1248-3

R.T.: 0.000 min
 Exp R.T. : 5.365 min
 Response: 0
 Conc: N.D.

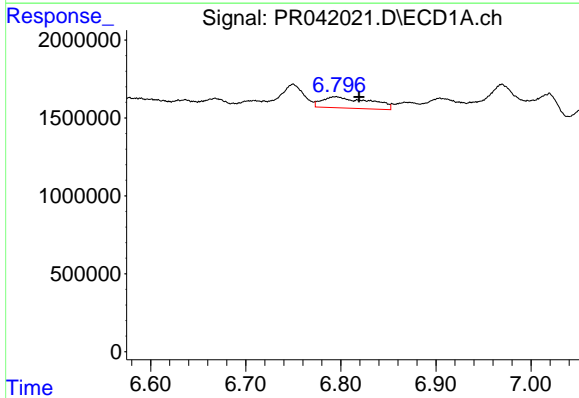


#24 AR-1248-4
 R.T.: 6.795 min
 Delta R.T.: 0.015 min
 Response: 2490508
 Conc: 16.23 ng/ml

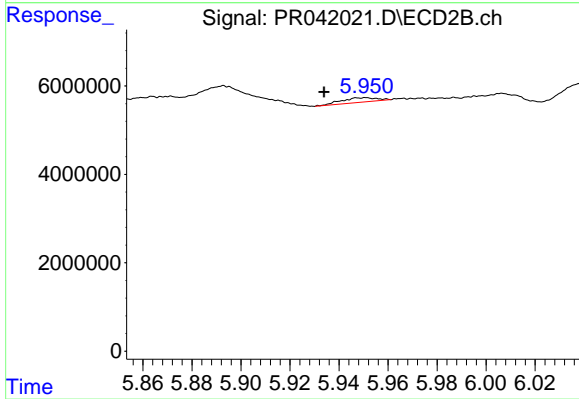
Instrument :
 ECD_R
 ClientSampled :
 C0B07



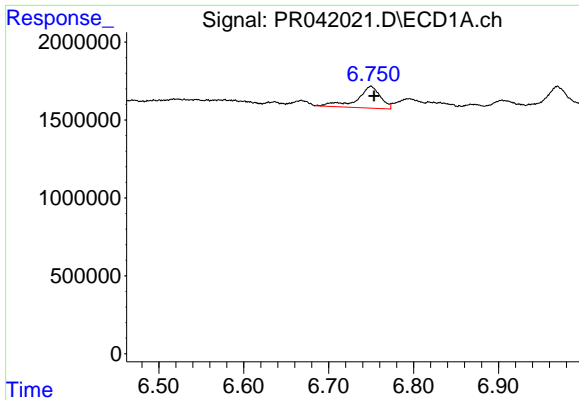
#24 AR-1248-4
 R.T.: 0.000 min
 Exp R.T. : 5.538 min
 Response: 0
 Conc: N.D.



#25 AR-1248-5
 R.T.: 6.795 min
 Delta R.T.: -0.025 min
 Response: 2490508
 Conc: 17.20 ng/ml



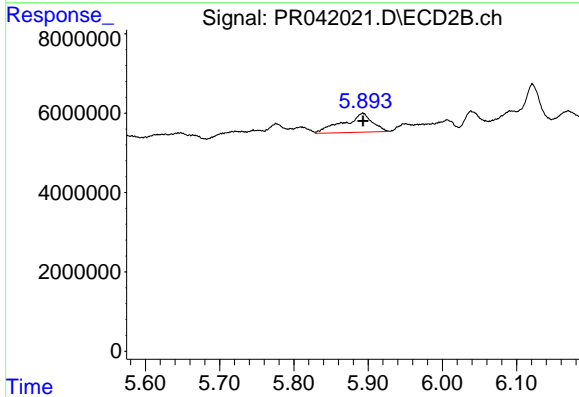
#25 AR-1248-5
 R.T.: 5.951 min
 Delta R.T.: 0.017 min
 Response: 1023823
 Conc: 2.93 ng/ml



#26 AR-1254-1

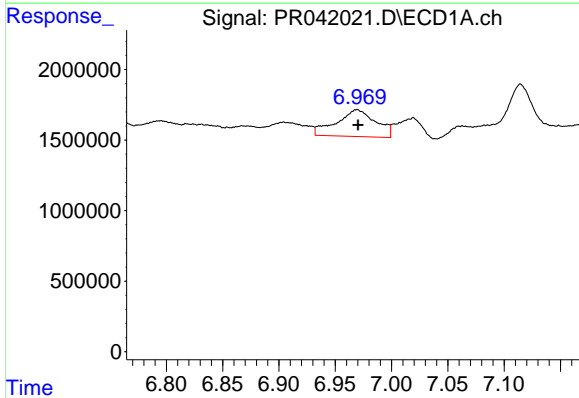
R.T.: 6.750 min
 Delta R.T.: -0.004 min
 Response: 2650786
 Conc: 16.23 ng/ml

Instrument :
 ECD_R
ClientSampled :
 C0B07



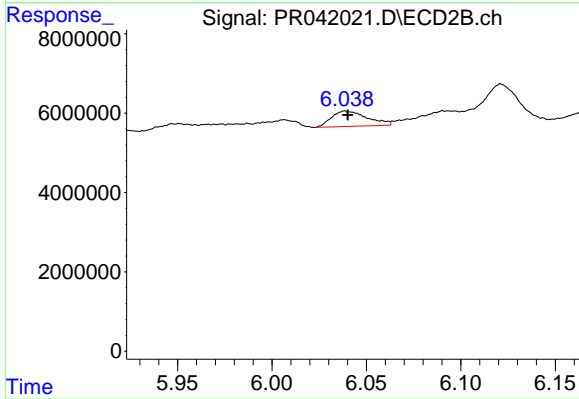
#26 AR-1254-1

R.T.: 5.893 min
 Delta R.T.: 0.000 min
 Response: 12909684
 Conc: 24.37 ng/ml



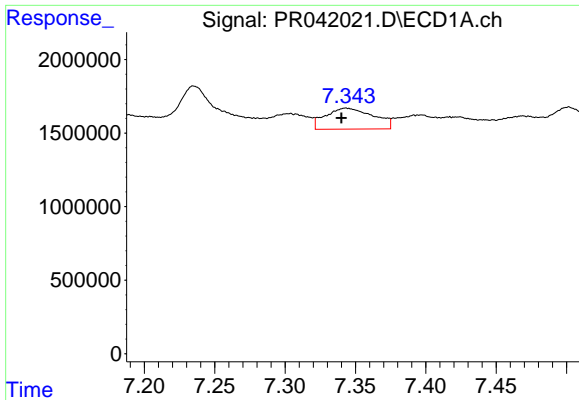
#27 AR-1254-2

R.T.: 6.969 min
 Delta R.T.: 0.000 min
 Response: 4624577
 Conc: 18.64 ng/ml



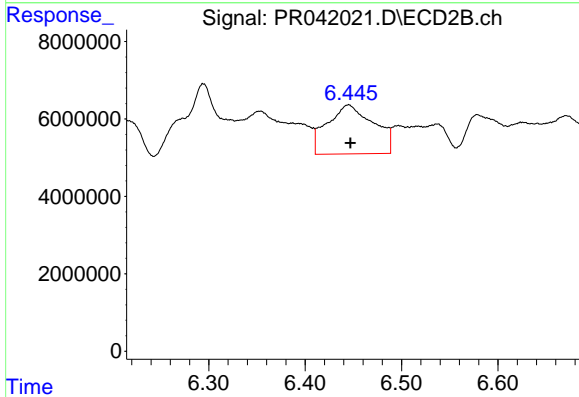
#27 AR-1254-2

R.T.: 6.039 min
 Delta R.T.: -0.001 min
 Response: 5075585
 Conc: 10.12 ng/ml

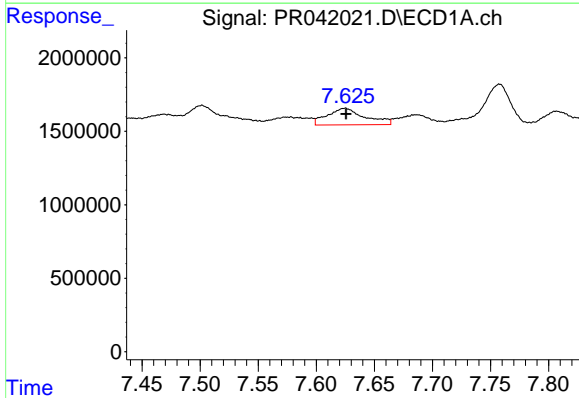


#28 AR-1254-3
 R.T.: 7.344 min
 Delta R.T.: 0.004 min
 Response: 3368359
 Conc: 12.48 ng/ml

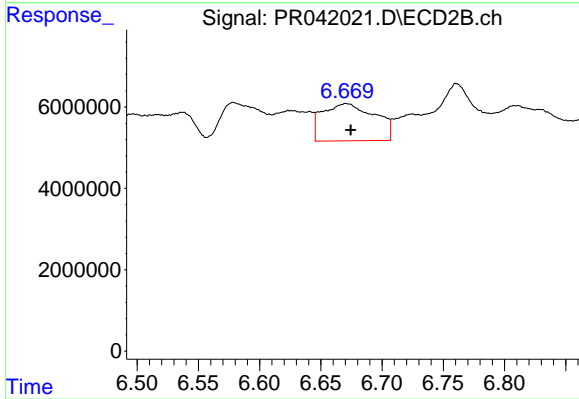
Instrument :
 ECD_R
 ClientSampleId :
 C0B07



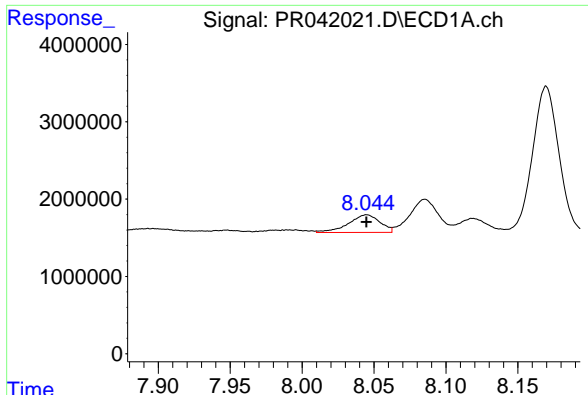
#28 AR-1254-3
 R.T.: 6.445 min
 Delta R.T.: -0.002 min
 Response: 42475604
 Conc: 45.02 ng/ml



#29 AR-1254-4
 R.T.: 7.625 min
 Delta R.T.: -0.001 min
 Response: 2538386
 Conc: 12.51 ng/ml



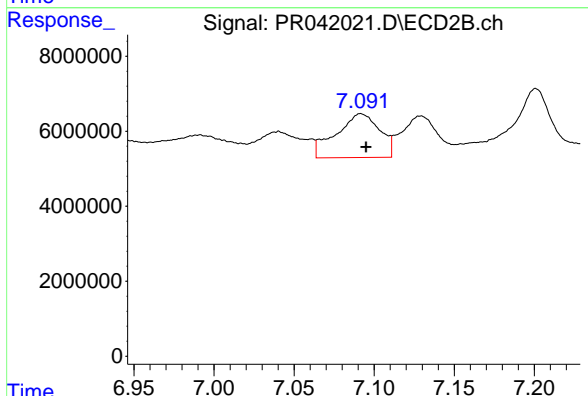
#29 AR-1254-4
 R.T.: 6.671 min
 Delta R.T.: -0.004 min
 Response: 27382183
 Conc: 41.36 ng/ml



#30 AR-1254-5

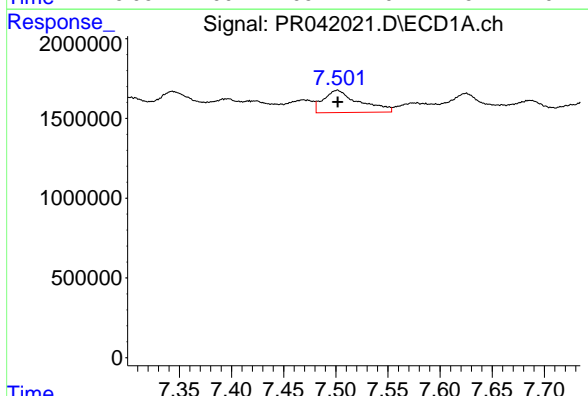
R.T.: 8.045 min
 Delta R.T.: 0.000 min
 Response: 3490177
 Conc: 16.41 ng/ml

Instrument :
 ECD_R
 ClientSampleId :
 C0B07



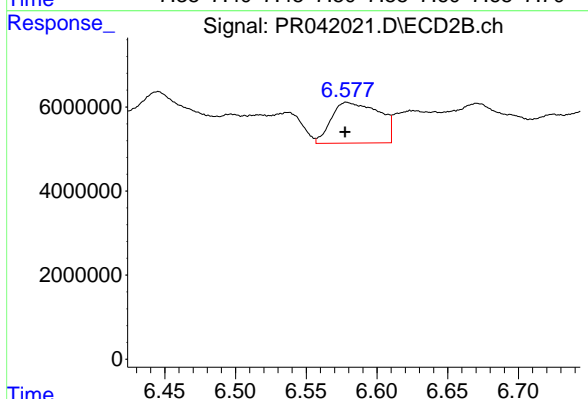
#30 AR-1254-5

R.T.: 7.092 min
 Delta R.T.: -0.003 min
 Response: 22129552
 Conc: 25.77 ng/ml



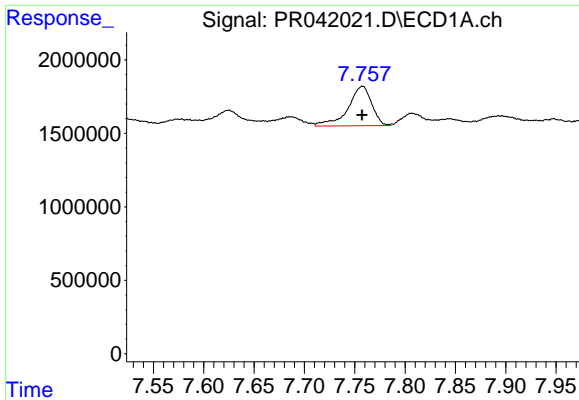
#31 AR-1260-1

R.T.: 7.501 min
 Delta R.T.: 0.000 min
 Response: 3314885
 Conc: 17.50 ng/ml



#31 AR-1260-1

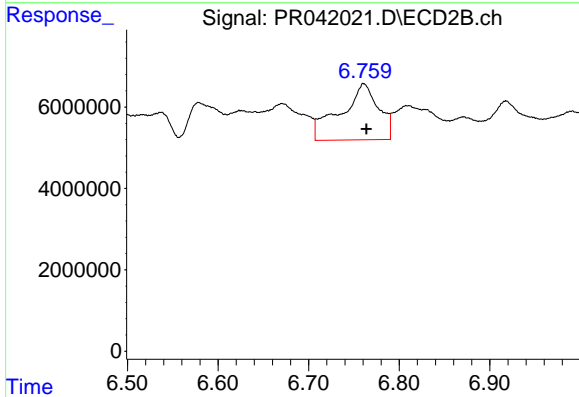
R.T.: 6.579 min
 Delta R.T.: 0.001 min
 Response: 22889794
 Conc: 38.62 ng/ml



#32 AR-1260-2

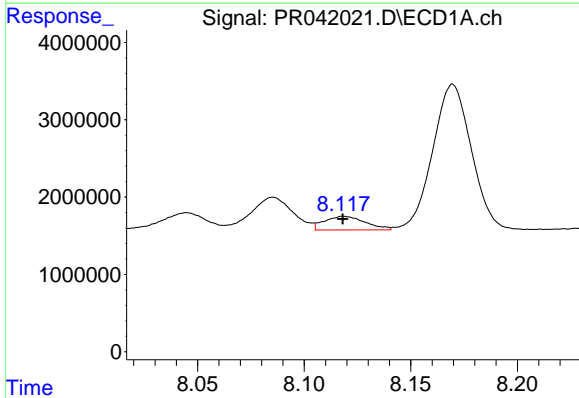
R.T.: 7.757 min
 Delta R.T.: 0.000 min
 Response: 4389608
 Conc: 18.57 ng/ml

Instrument :
 ECD_R
 ClientSampleId :
 C0B07



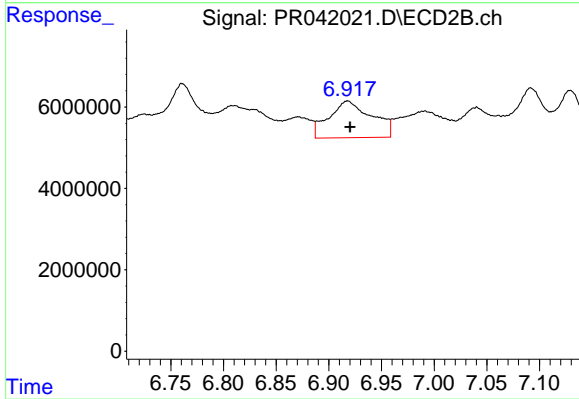
#32 AR-1260-2

R.T.: 6.761 min
 Delta R.T.: -0.003 min
 Response: 40296320
 Conc: 49.43 ng/ml



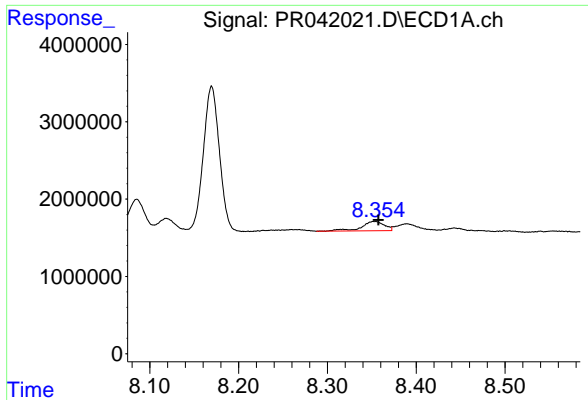
#33 AR-1260-3

R.T.: 8.119 min
 Delta R.T.: 0.000 min
 Response: 2387456
 Conc: 12.72 ng/ml



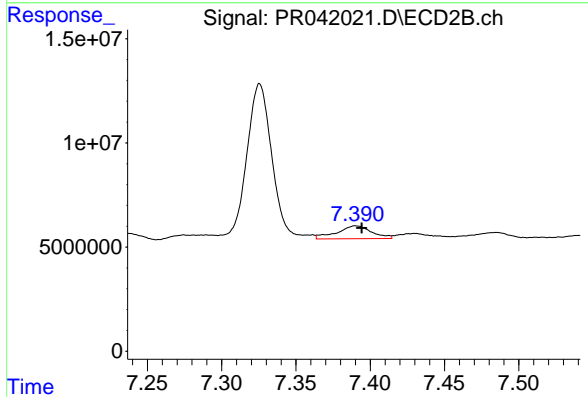
#33 AR-1260-3

R.T.: 6.918 min
 Delta R.T.: -0.002 min
 Response: 25666848
 Conc: 37.13 ng/ml

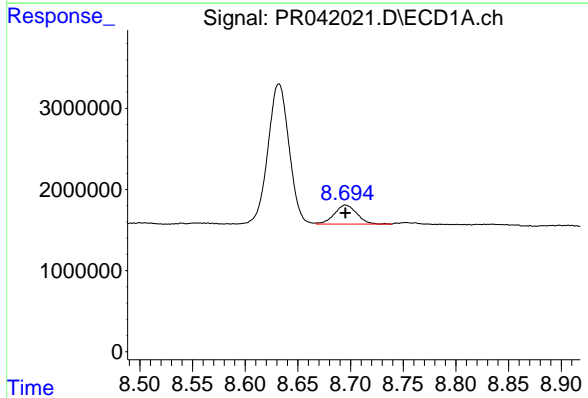


#34 AR-1260-4
 R.T.: 8.353 min
 Delta R.T.: -0.005 min
 Response: 2181803
 Conc: 10.86 ng/ml

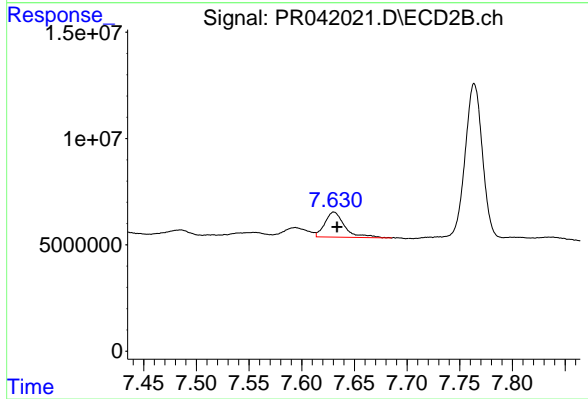
Instrument :
 ECD_R
 ClientSampleId :
 C0B07



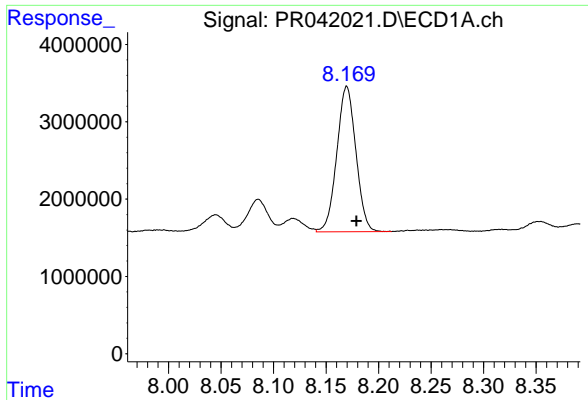
#34 AR-1260-4
 R.T.: 7.390 min
 Delta R.T.: -0.004 min
 Response: 10074025
 Conc: 17.36 ng/ml



#35 AR-1260-5
 R.T.: 8.696 min
 Delta R.T.: 0.000 min
 Response: 3453741
 Conc: 7.98 ng/ml



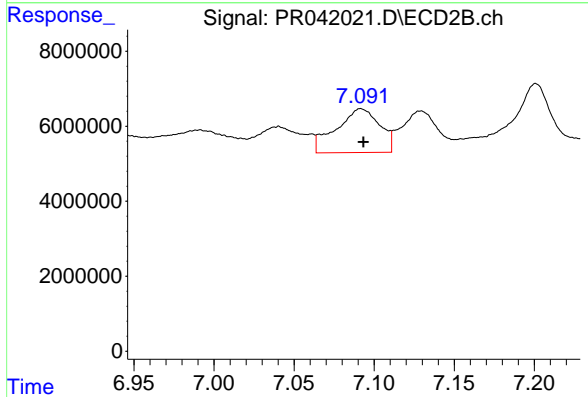
#35 AR-1260-5
 R.T.: 7.631 min
 Delta R.T.: -0.003 min
 Response: 15485405
 Conc: 9.52 ng/ml



#36 AR-1262-1

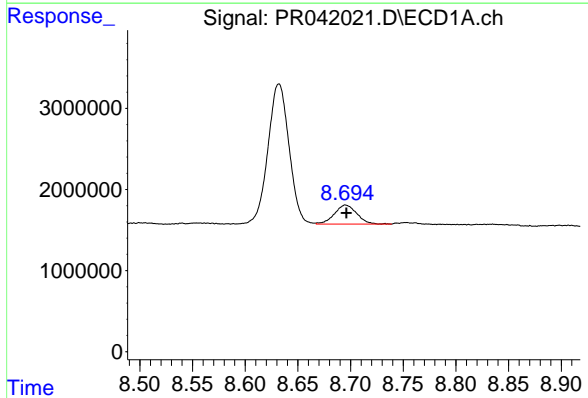
R.T.: 8.170 min
 Delta R.T.: -0.009 min
 Response: 23820137
 Conc: 253.05 ng/ml

Instrument :
 ECD_R
ClientSampleId :
 C0B07



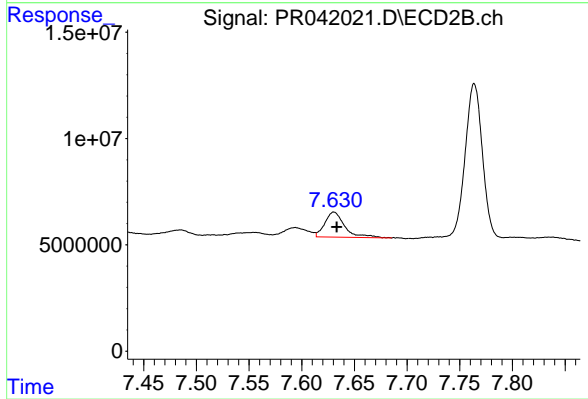
#36 AR-1262-1

R.T.: 7.092 min
 Delta R.T.: -0.002 min
 Response: 22129552
 Conc: 50.78 ng/ml



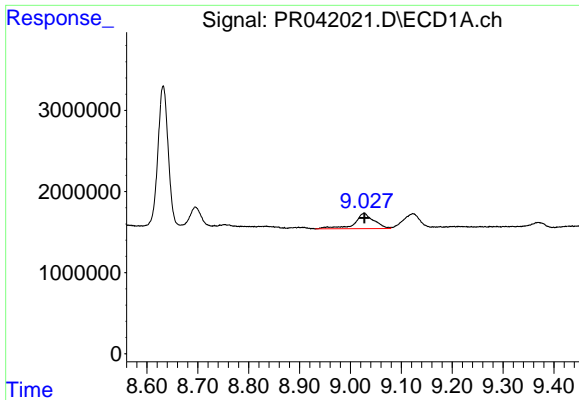
#37 AR-1262-2

R.T.: 8.696 min
 Delta R.T.: 0.000 min
 Response: 3453741
 Conc: 8.01 ng/ml



#37 AR-1262-2

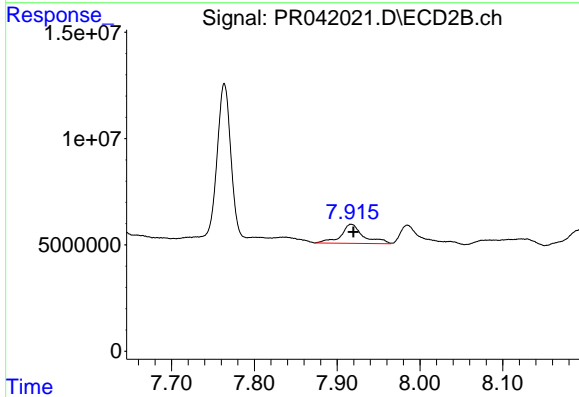
R.T.: 7.631 min
 Delta R.T.: -0.003 min
 Response: 15485405
 Conc: 9.00 ng/ml



#38 AR-1262-3

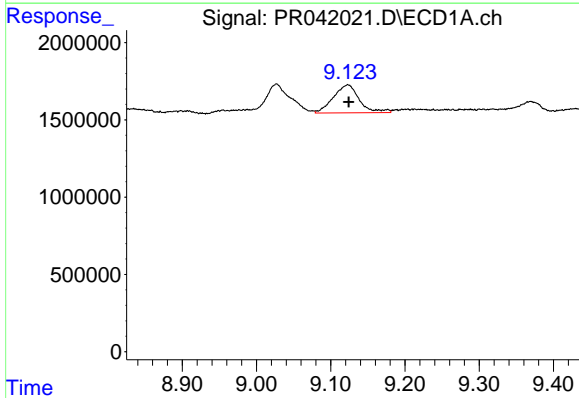
R.T.: 9.027 min
 Delta R.T.: -0.001 min
 Response: 4979282
 Conc: 17.86 ng/ml

Instrument :
 ECD_R
 ClientSampleId :
 C0B07



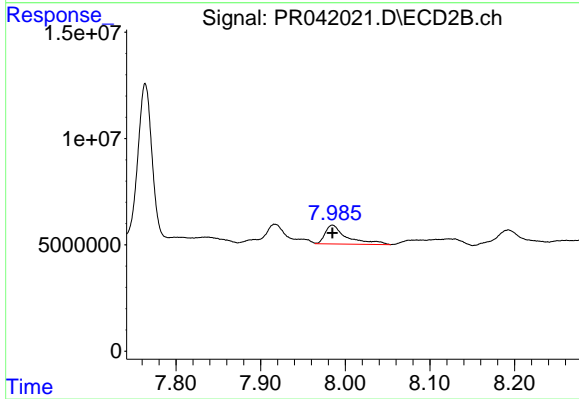
#38 AR-1262-3

R.T.: 7.917 min
 Delta R.T.: -0.003 min
 Response: 16925884
 Conc: 25.93 ng/ml



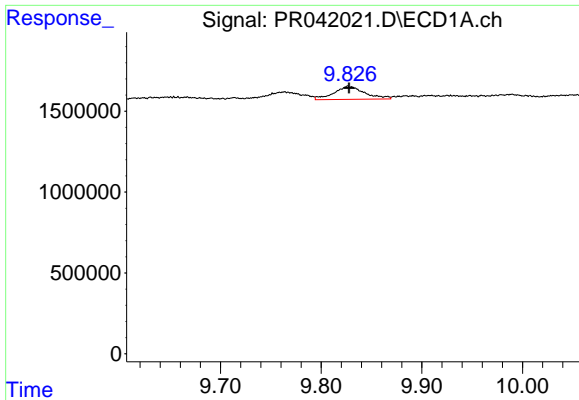
#39 AR-1262-4

R.T.: 9.123 min
 Delta R.T.: -0.002 min
 Response: 4376132
 Conc: 21.36 ng/ml



#39 AR-1262-4

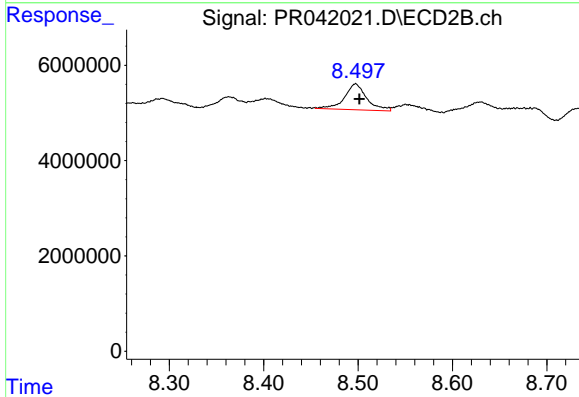
R.T.: 7.985 min
 Delta R.T.: 0.000 min
 Response: 15775843
 Conc: 13.50 ng/ml



#40 AR-1262-5

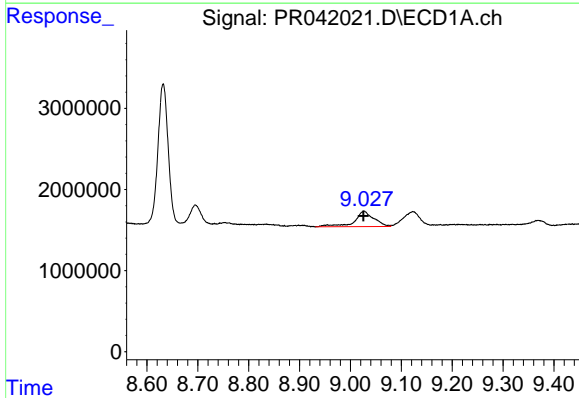
R.T.: 9.828 min
 Delta R.T.: 0.000 min
 Response: 1725211
 Conc: 11.96 ng/ml

Instrument :
 ECD_R
ClientSampleId :
 C0B07



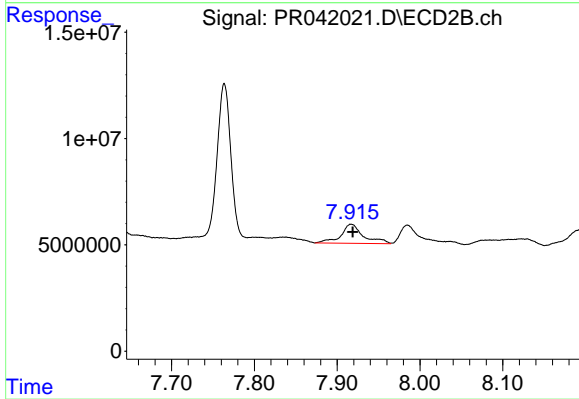
#40 AR-1262-5

R.T.: 8.497 min
 Delta R.T.: -0.004 min
 Response: 8950109
 Conc: 16.73 ng/ml



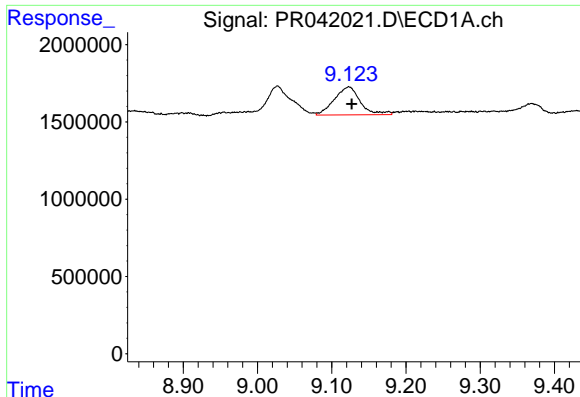
#41 AR-1268-1

R.T.: 9.027 min
 Delta R.T.: 0.002 min
 Response: 4979282
 Conc: 9.07 ng/ml



#41 AR-1268-1

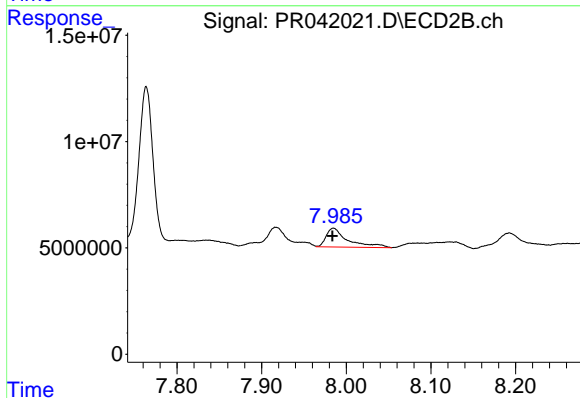
R.T.: 7.917 min
 Delta R.T.: -0.002 min
 Response: 16925884
 Conc: 7.72 ng/ml



#42 AR-1268-2

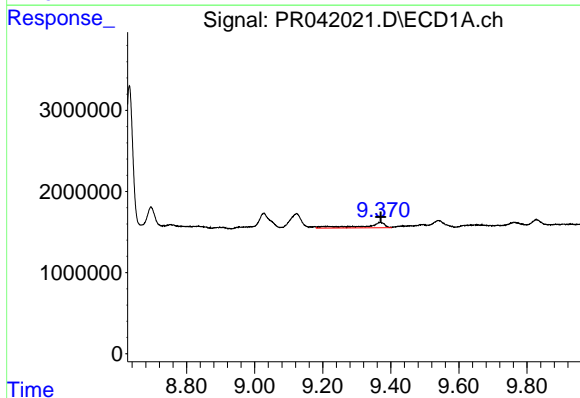
R.T.: 9.123 min
 Delta R.T.: -0.004 min
 Response: 4376132
 Conc: 8.80 ng/ml

Instrument :
 ECD_R
 ClientSampleId :
 C0B07



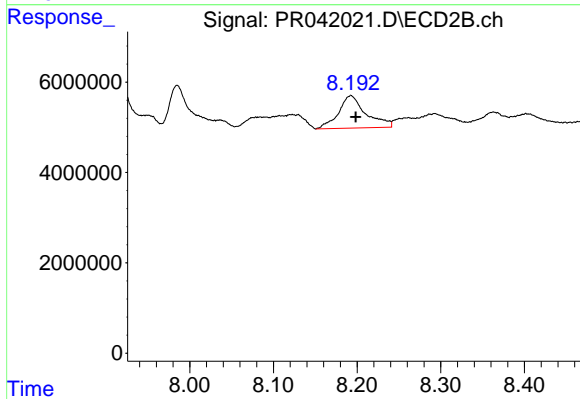
#42 AR-1268-2

R.T.: 7.985 min
 Delta R.T.: 0.001 min
 Response: 15775843
 Conc: 7.93 ng/ml



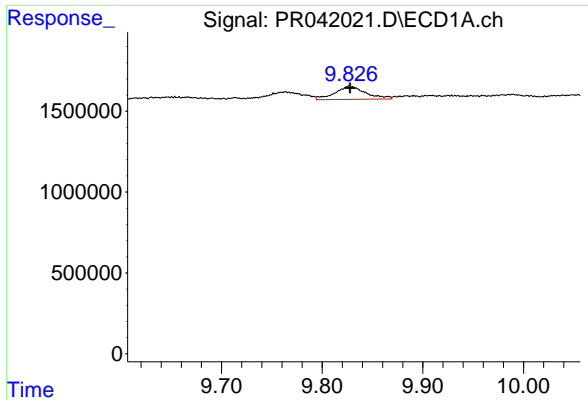
#43 AR-1268-3

R.T.: 9.369 min
 Delta R.T.: -0.001 min
 Response: 2880500
 Conc: 7.06 ng/ml



#43 AR-1268-3

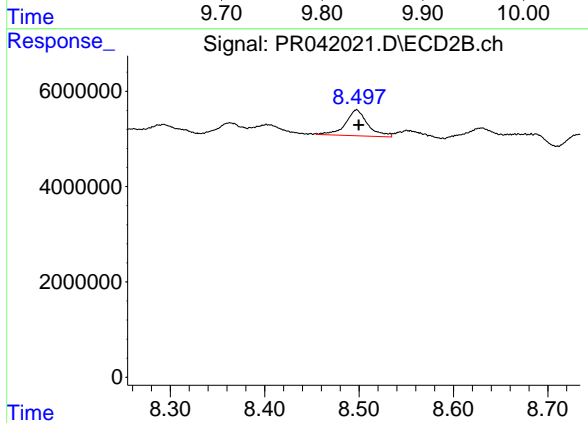
R.T.: 8.193 min
 Delta R.T.: -0.006 min
 Response: 16361201
 Conc: 9.76 ng/ml



#44 AR-1268-4

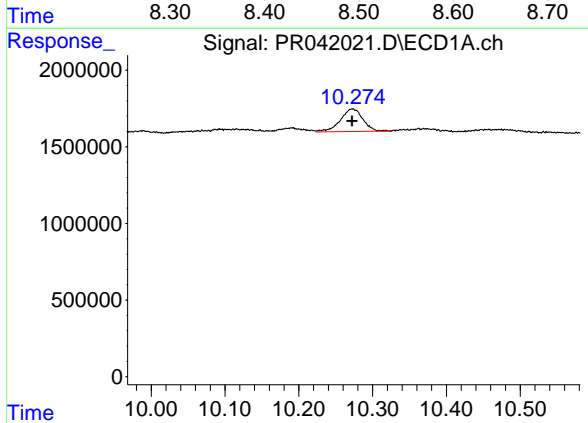
R.T.: 9.828 min
 Delta R.T.: 0.000 min
 Response: 1725211
 Conc: 9.83 ng/ml

Instrument :
 ECD_R
 ClientSampleId :
 C0B07



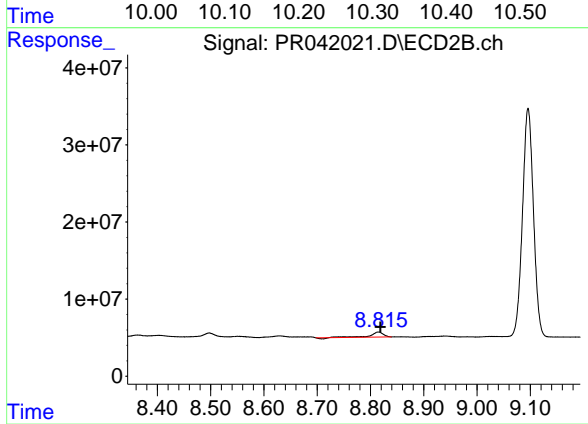
#44 AR-1268-4

R.T.: 8.497 min
 Delta R.T.: -0.002 min
 Response: 8950109
 Conc: 13.87 ng/ml



#45 AR-1268-5

R.T.: 10.273 min
 Delta R.T.: 0.000 min
 Response: 3127135
 Conc: 2.40 ng/ml



#45 AR-1268-5

R.T.: 8.815 min
 Delta R.T.: -0.003 min
 Response: 11566865
 Conc: 2.52 ng/ml