

Data Path : Z:\pestpcbsrv\HPCHEM1\ECD_R\Data\PR100719\
 Data File : PR042040.D
 Signal(s) : Signal #1: ECD1A.ch Signal #2: ECD2B.ch
 Acq On : 07 Oct 2019 15:00
 Operator : SM\AJ
 Sample : AR1660CCC400
 Misc :
 ALS Vial : 3 Sample Multiplier: 1

Instrument :
 ECD_R
 ClientSampleId :
 AR1660372

Integration File signal 1: autoint1.e
 Integration File signal 2: autoint2.e
 Quant Time: Oct 08 02:37:48 2019
 Quant Method : Z:\pestpcbsrv\HPCHEM1\ECD_R\Method\PR100319CLP.M
 Quant Title : GC EXTRACTABLES
 QLast Update : Fri Oct 04 06:59:35 2019
 Response via : Initial Calibration
 Integrator: ChemStation

Volume Inj. : 1 µl
 Signal #1 Phase : ZB MR1 Signal #2 Phase: ZB MR2
 Signal #1 Info : 30Mx0.32mmx 0.5µm Signal #2 Info : 30M x 0.32mm x 0.25µm

Compound	RT#1	RT#2	Resp#1	Resp#2	ng/ml	ng/ml
System Monitoring Compounds						
1) SA Tetrachlo...	4.718	3.982	94428336	362.3E6	23.213	23.695
2) SA Decachlor...	10.635	9.094	133.5E6	458.2E6	38.842	46.216
Target Compounds						
3) L1 AR-1016-1	5.895	5.080	64549352	243.1E6	449.604	447.209
4) L1 AR-1016-2	5.918	5.101	93366772	336.2E6	456.569	465.859
5) L1 AR-1016-3	5.981	5.279	54577188	165.1E6	448.923	452.675
6) L1 AR-1016-4	6.081	5.318	45323420	122.0E6	445.654	439.771
7) L1 AR-1016-5	6.375	5.535	44569046	133.0E6	447.611	430.210
8) L2 AR-1221-1	4.922	4.194	5980443	21019131	145.667	124.419
9) L2 AR-1221-2	5.014	4.283	6471581	31413488	223.055	255.607
10) L2 AR-1221-3	5.093	4.360	30030487	123.4E6	308.661	316.934
11) L3 AR-1232-1	5.093	4.360	30030487	123.4E6	358.881	362.296
12) L3 AR-1232-2	5.627	5.101	42788036	336.2E6	993.251	987.429
13) L3 AR-1232-3	5.918	5.279	93366772	165.1E6	1038.386	980.130
14) L3 AR-1232-4	6.081	5.362	45323420	144.6E6	1018.420	1015.301
15) L3 AR-1232-5	6.168	5.535	39720768	133.0E6	1209.096	987.203
16) L4 AR-1242-1	5.895	5.080	64549352	243.1E6	585.346	572.407
17) L4 AR-1242-2	5.918	5.101	93366772	336.2E6	601.394	590.827
18) L4 AR-1242-3	5.981	5.279	54577188	165.1E6	581.667	571.942
19) L4 AR-1242-4	6.081	5.362	45323420	144.6E6	583.406	555.539
20) L4 AR-1242-5	6.819	5.889	7764684	94682917	88.711	356.899 #
21) L5 AR-1248-1	5.895	5.080	64549352	243.1E6	775.718	745.846
22) L5 AR-1248-2	6.168	5.318	39720768	122.0E6	346.137	327.652
23) L5 AR-1248-3	6.375	5.362	44569046	144.6E6	343.746	386.351
24) L5 AR-1248-4	6.752	5.535	39274568	133.0E6	255.950	334.005 #
25) L5 AR-1248-5	6.819	5.931	7764684	19879271	53.627	56.918
26) L6 AR-1254-1	6.752	5.889	39274568	94682917	240.488	178.736 #
27) L6 AR-1254-2	6.968	6.036	34363539	93819350	138.507	187.132 #
28) L6 AR-1254-3	7.339	6.458	20493257	240.5E6	75.940	254.937 #
29) L6 AR-1254-4	7.624	6.671	14378028	33270068	70.843	50.251 #
30) L6 AR-1254-5	8.043	7.090	123.7E6	385.9E6	581.668	449.471
31) L7 AR-1260-1	7.501	6.573	78923360	273.4E6	416.557	461.170
32) L7 AR-1260-2	7.756	6.759	96002651	378.9E6	406.169	464.770
33) L7 AR-1260-3	8.117	6.916	70817794	327.4E6	377.236	473.546 #
34) L7 AR-1260-4	8.356	7.390	82676830	268.6E6	411.396	462.903
35) L7 AR-1260-5	8.694	7.629	167.6E6	757.9E6	387.192	466.182
36) L8 AR-1262-1	8.177	7.090	36615697	385.9E6	388.988	885.616 #
37) L8 AR-1262-2	8.694	7.629	167.6E6	757.9E6	388.583	440.281
38) L8 AR-1262-3	9.045	7.914	103.9E6	163.2E6	372.718	250.059 #
39) L8 AR-1262-4	9.104	7.978	62490018	494.2E6	305.024	422.925 #
40) L8 AR-1262-5	9.826	8.495	45017791	172.3E6	312.083	322.063
41) L9 AR-1268-1	9.045	7.914	103.9E6	163.2E6	189.156	74.441 #

Data Path : Z:\pestpcbsrv\HPCHEM1\ECD_R\Data\PR100719\
 Data File : PR042040.D
 Signal(s) : Signal #1: ECD1A.ch Signal #2: ECD2B.ch
 Acq On : 07 Oct 2019 15:00
 Operator : SM\AJ
 Sample : AR1660CCC400
 Misc :
 ALS Vial : 3 Sample Multiplier: 1

Instrument :
 ECD_R
 ClientSampleId :
 AR1660372

Integration File signal 1: autoint1.e
 Integration File signal 2: autoint2.e
 Quant Time: Oct 08 02:37:48 2019
 Quant Method : Z:\pestpcbsrv\HPCHEM1\ECD_R\Method\PR100319CLP.M
 Quant Title : GC EXTRACTABLES
 QLast Update : Fri Oct 04 06:59:35 2019
 Response via : Initial Calibration
 Integrator: ChemStation

Volume Inj. : 1 µl
 Signal #1 Phase : ZB MR1 Signal #2 Phase: ZB MR2
 Signal #1 Info : 30Mx0.32mmx 0.5µm Signal #2 Info : 30M x 0.32mm x 0.25µm

	Compound	RT#1	RT#2	Resp#1	Resp#2	ng/ml	ng/ml
42)	L9 AR-1268-2	9.104	7.978	62490018	494.2E6	125.690	248.370 #
43)	L9 AR-1268-3	9.369	8.193	2760060	8153355	6.767	4.865 #
44)	L9 AR-1268-4	9.826	8.495	45017791	172.3E6	256.588	266.946
45)	L9 AR-1268-5	10.270	8.813	12289157	41971287	9.431	9.146

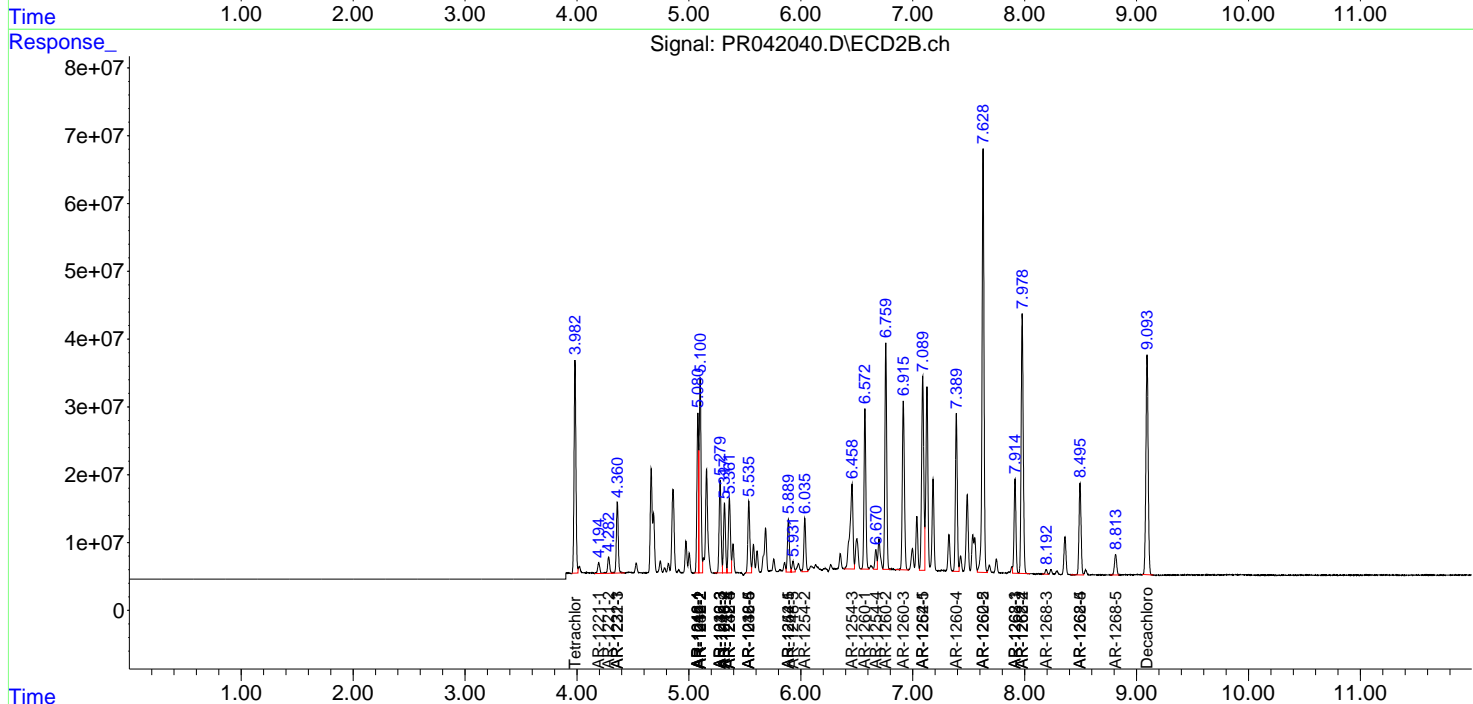
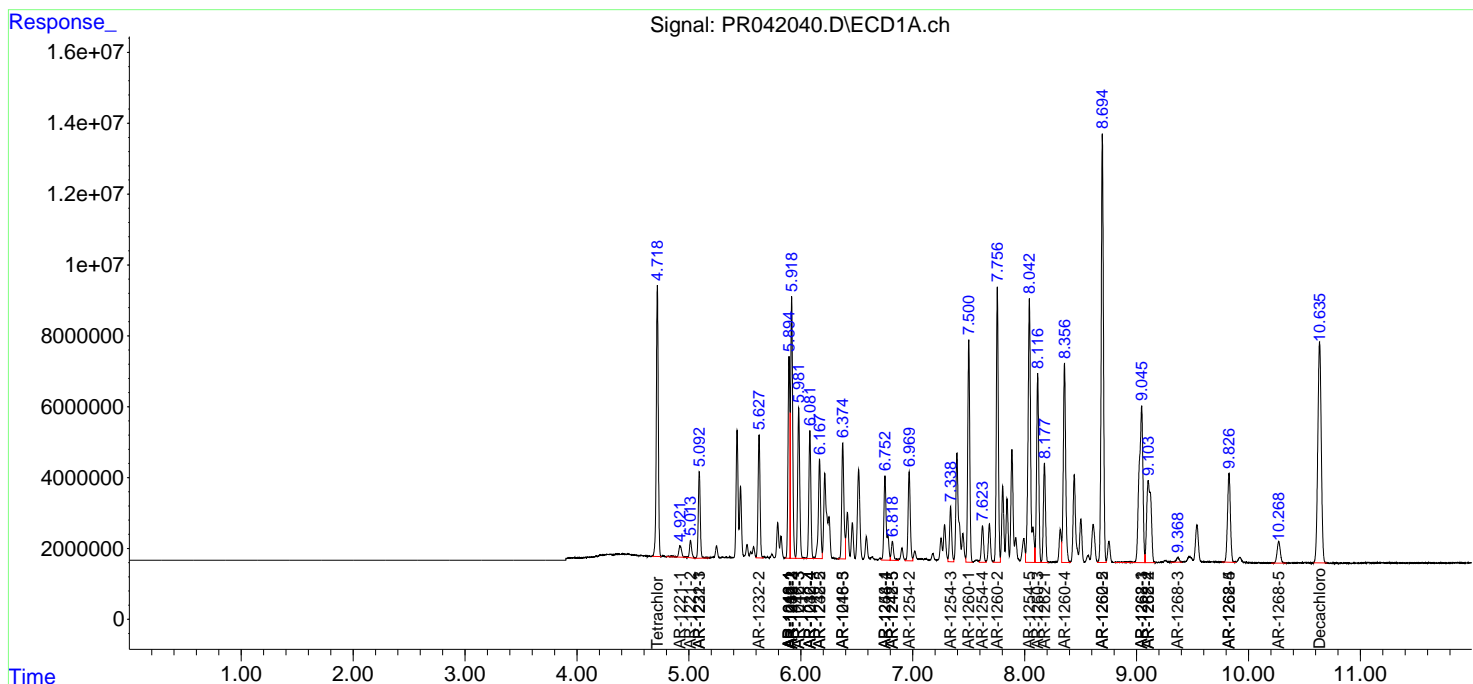
(f)=RT Delta > 1/2 Window (#)=Amounts differ by > 25% (m)=manual int.

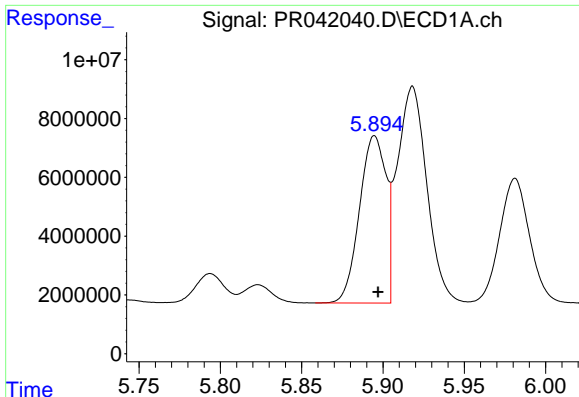
Data Path : Z:\pestpcbsrv\HPCHEM1\ECD_R\Data\PR100719\
 Data File : PR042040.D
 Signal(s) : Signal #1: ECD1A.ch Signal #2: ECD2B.ch
 Acq On : 07 Oct 2019 15:00
 Operator : SM\AJ
 Sample : AR1660CCC400
 Misc :
 ALS Vial : 3 Sample Multiplier: 1

Instrument :
 ECD_R
 ClientSampled :
 AR1660372

Integration File signal 1: autoint1.e
 Integration File signal 2: autoint2.e
 Quant Time: Oct 08 02:37:48 2019
 Quant Method : Z:\pestpcbsrv\HPCHEM1\ECD_R\Method\PR100319CLP.M
 Quant Title : GC EXTRACTABLES
 QLast Update : Fri Oct 04 06:59:35 2019
 Response via : Initial Calibration
 Integrator: ChemStation

Volume Inj. : 1 µl
 Signal #1 Phase : ZB MR1 Signal #2 Phase: ZB MR2
 Signal #1 Info : 30Mx0.32mmx 0.5µm Signal #2 Info : 30M x 0.32mm x 0.25µm

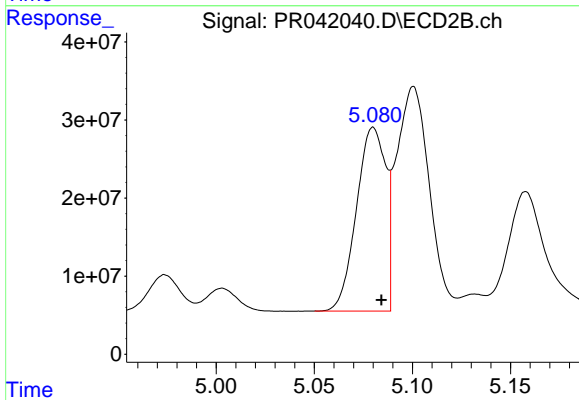




#3 AR-1016-1

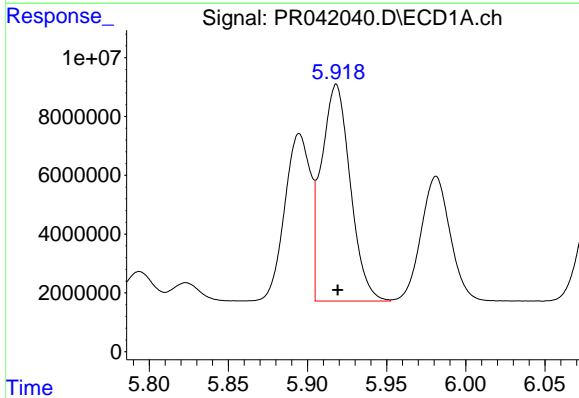
R.T.: 5.895 min
 Delta R.T.: -0.002 min
 Response: 64549352
 Conc: 449.60 ng/ml

Instrument :
 ECD_R
 ClientSampleId :
 AR1660372



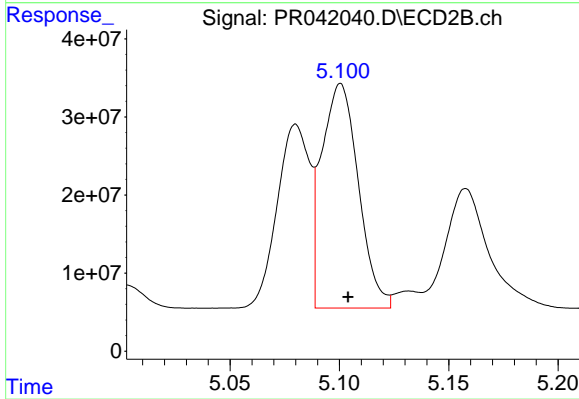
#3 AR-1016-1

R.T.: 5.080 min
 Delta R.T.: -0.004 min
 Response: 243100847
 Conc: 447.21 ng/ml



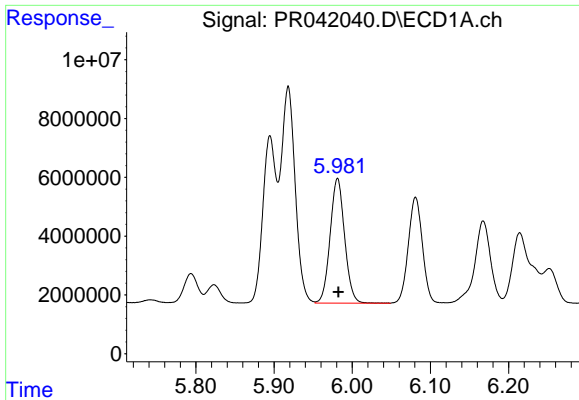
#4 AR-1016-2

R.T.: 5.918 min
 Delta R.T.: -0.001 min
 Response: 93366772
 Conc: 456.57 ng/ml



#4 AR-1016-2

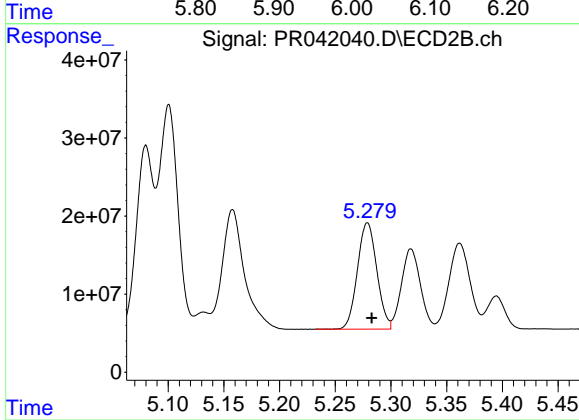
R.T.: 5.101 min
 Delta R.T.: -0.003 min
 Response: 336245010
 Conc: 465.86 ng/ml



#5 AR-1016-3

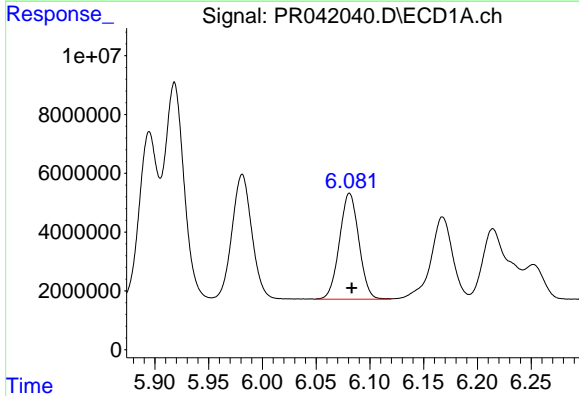
R.T.: 5.981 min
Delta R.T.: -0.001 min
Response: 54577188
Conc: 448.92 ng/ml

Instrument :
ECD_R
ClientSampleId :
AR1660372



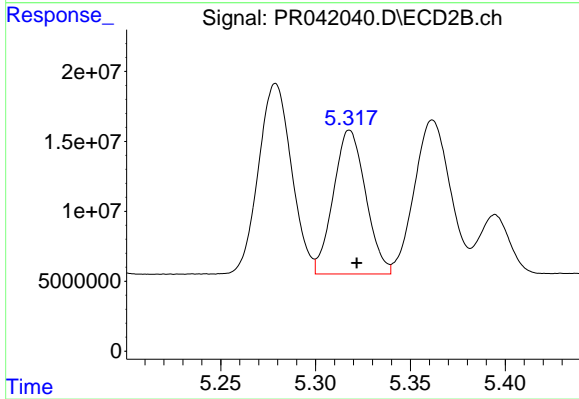
#5 AR-1016-3

R.T.: 5.279 min
Delta R.T.: -0.004 min
Response: 165066504
Conc: 452.68 ng/ml



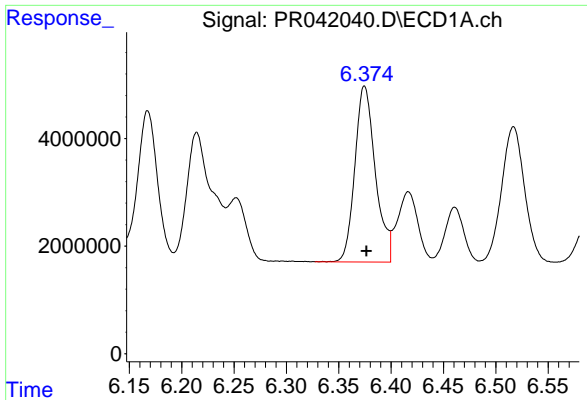
#6 AR-1016-4

R.T.: 6.081 min
Delta R.T.: -0.002 min
Response: 45323420
Conc: 445.65 ng/ml



#6 AR-1016-4

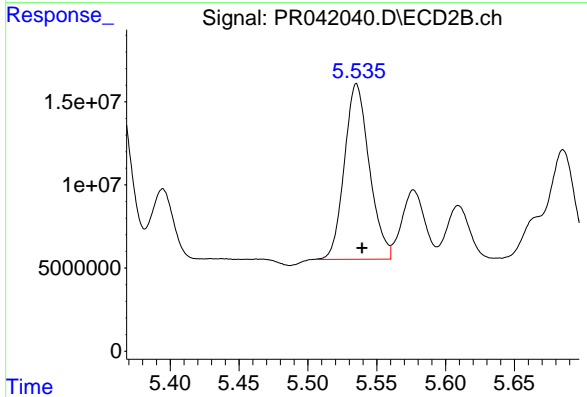
R.T.: 5.318 min
Delta R.T.: -0.004 min
Response: 122040925
Conc: 439.77 ng/ml



#7 AR-1016-5

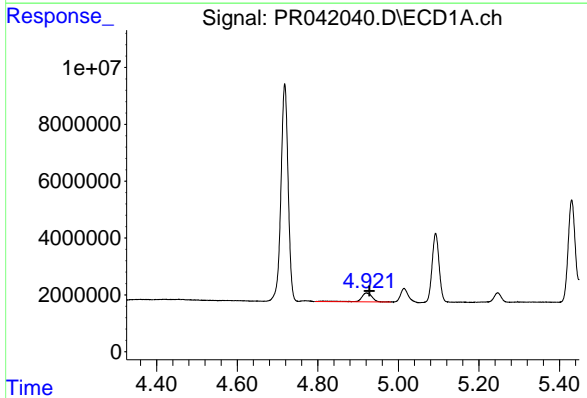
R.T.: 6.375 min
Delta R.T.: -0.002 min
Response: 44569046
Conc: 447.61 ng/ml

Instrument :
ECD_R
ClientSampleId :
AR1660372



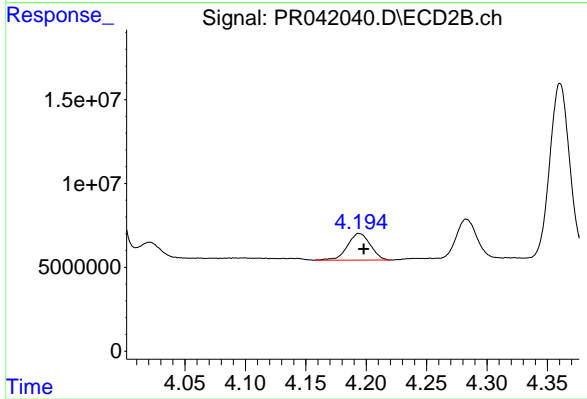
#7 AR-1016-5

R.T.: 5.535 min
Delta R.T.: -0.004 min
Response: 133026450
Conc: 430.21 ng/ml



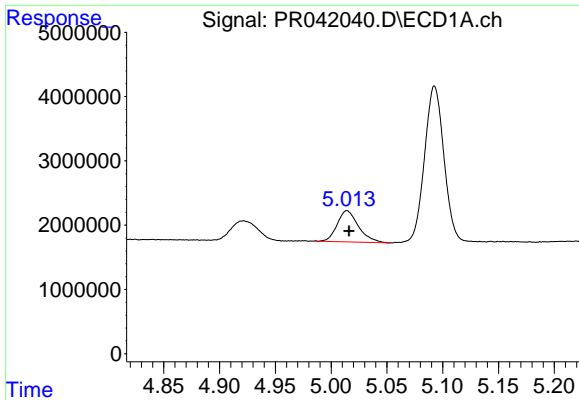
#8 AR-1221-1

R.T.: 4.922 min
Delta R.T.: -0.006 min
Response: 5980443
Conc: 145.67 ng/ml



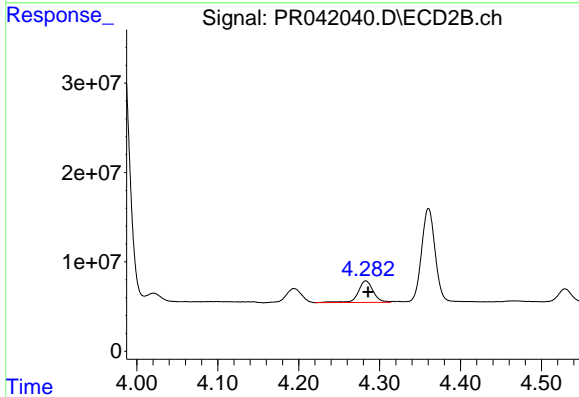
#8 AR-1221-1

R.T.: 4.194 min
Delta R.T.: -0.004 min
Response: 21019131
Conc: 124.42 ng/ml

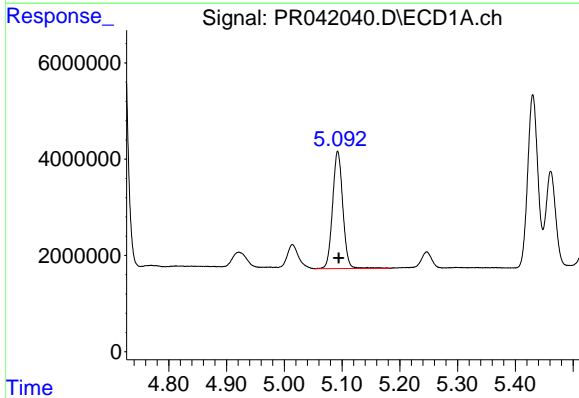


#9 AR-1221-2
 R.T.: 5.014 min
 Delta R.T.: -0.002 min
 Response: 6471581
 Conc: 223.05 ng/ml

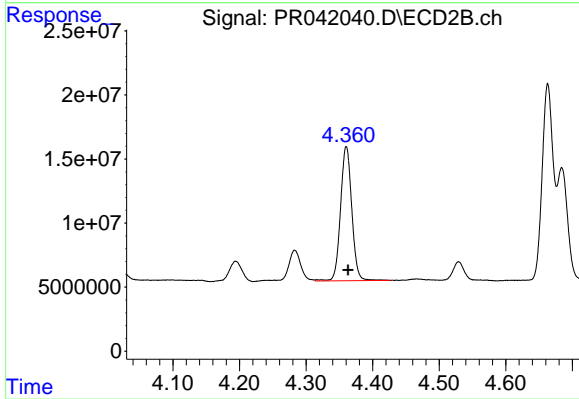
Instrument :
 ECD_R
 ClientSampleId :
 AR1660372



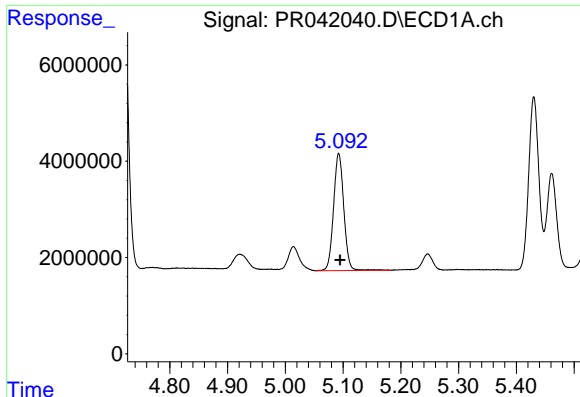
#9 AR-1221-2
 R.T.: 4.283 min
 Delta R.T.: -0.003 min
 Response: 31413488
 Conc: 255.61 ng/ml



#10 AR-1221-3
 R.T.: 5.093 min
 Delta R.T.: -0.002 min
 Response: 30030487
 Conc: 308.66 ng/ml



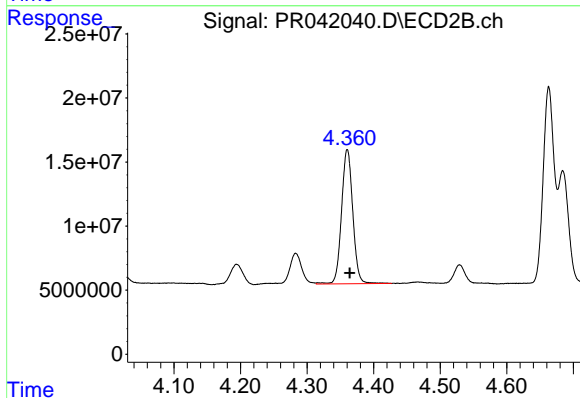
#10 AR-1221-3
 R.T.: 4.360 min
 Delta R.T.: -0.003 min
 Response: 123445032
 Conc: 316.93 ng/ml



#11 AR-1232-1

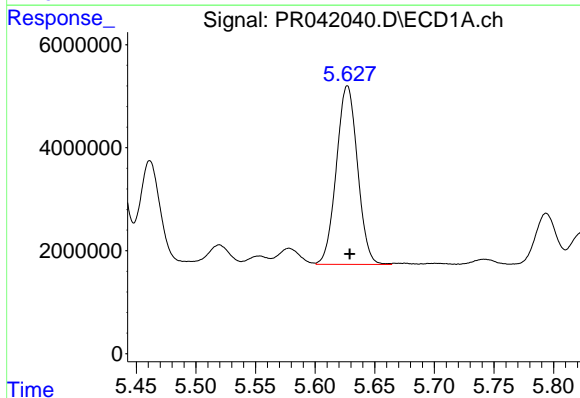
R.T.: 5.093 min
Delta R.T.: -0.002 min
Response: 30030487
Conc: 358.88 ng/ml

Instrument :
ECD_R
ClientSampleId :
AR1660372



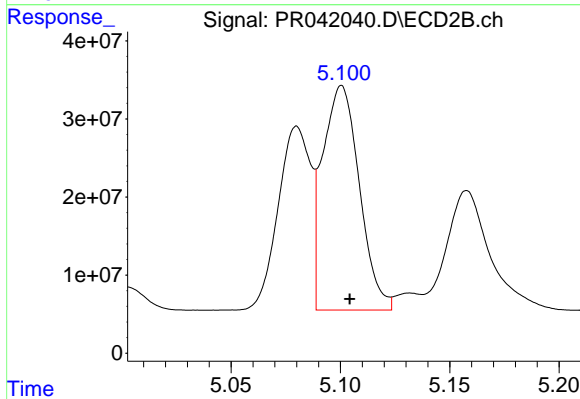
#11 AR-1232-1

R.T.: 4.360 min
Delta R.T.: -0.004 min
Response: 123445032
Conc: 362.30 ng/ml



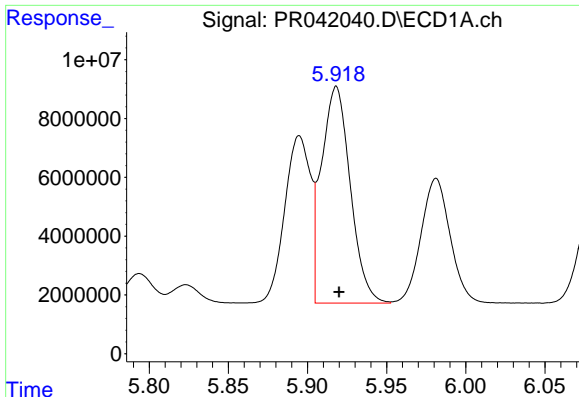
#12 AR-1232-2

R.T.: 5.627 min
Delta R.T.: -0.002 min
Response: 42788036
Conc: 993.25 ng/ml



#12 AR-1232-2

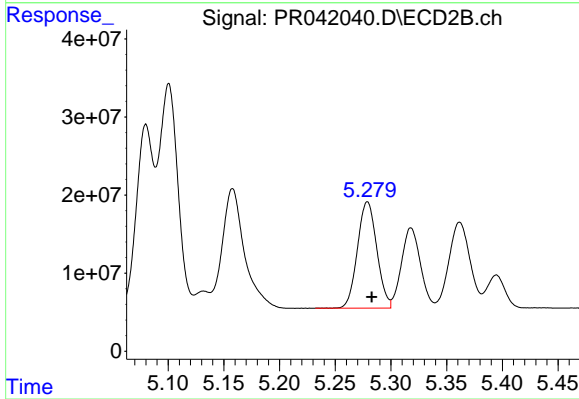
R.T.: 5.101 min
Delta R.T.: -0.004 min
Response: 336245010
Conc: 987.43 ng/ml



#13 AR-1232-3

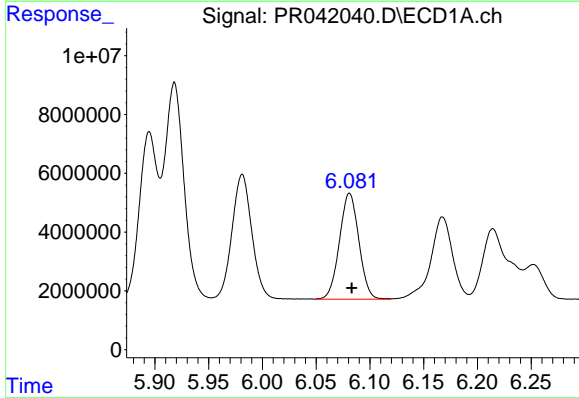
R.T.: 5.918 min
 Delta R.T.: -0.002 min
 Response: 93366772
 Conc: 1038.39 ng/ml

Instrument :
 ECD_R
 ClientSampled :
 AR1660372



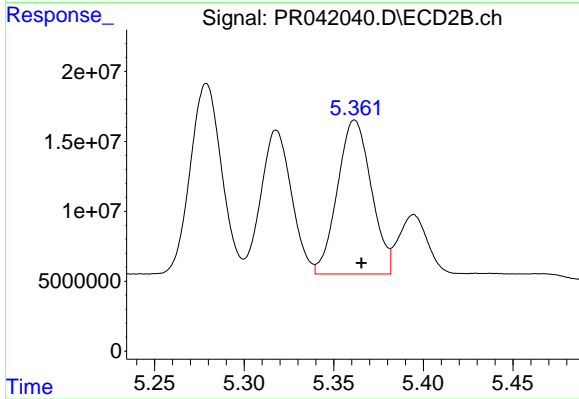
#13 AR-1232-3

R.T.: 5.279 min
 Delta R.T.: -0.004 min
 Response: 165066504
 Conc: 980.13 ng/ml



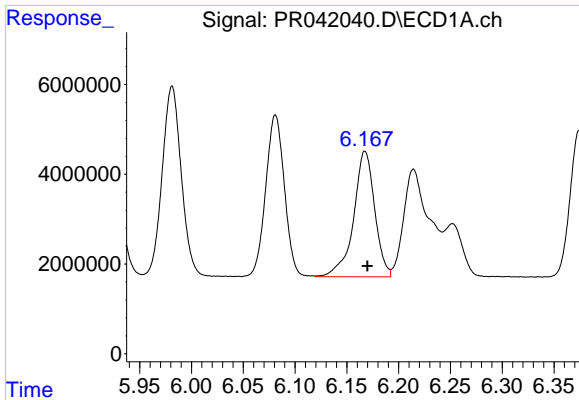
#14 AR-1232-4

R.T.: 6.081 min
 Delta R.T.: -0.002 min
 Response: 45323420
 Conc: 1018.42 ng/ml



#14 AR-1232-4

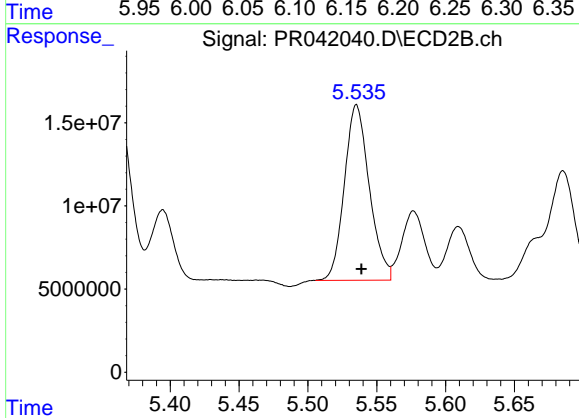
R.T.: 5.362 min
 Delta R.T.: -0.004 min
 Response: 144618425
 Conc: 1015.30 ng/ml



#15 AR-1232-5

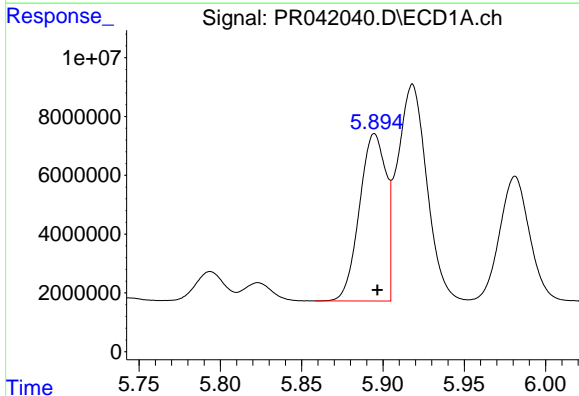
R.T.: 6.168 min
Delta R.T.: -0.002 min
Response: 39720768
Conc: 1209.10 ng/ml

Instrument :
ECD_R
ClientSampled :
AR1660372



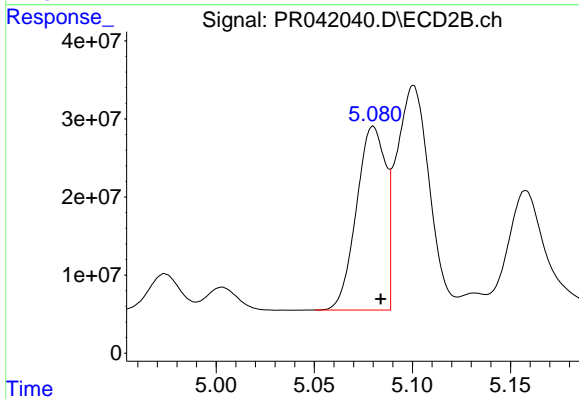
#15 AR-1232-5

R.T.: 5.535 min
Delta R.T.: -0.004 min
Response: 133026450
Conc: 987.20 ng/ml



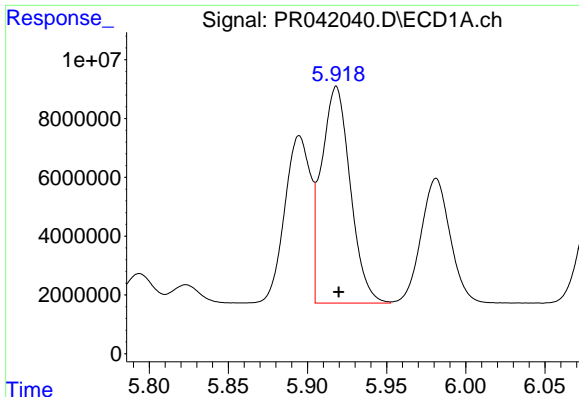
#16 AR-1242-1

R.T.: 5.895 min
Delta R.T.: -0.002 min
Response: 64549352
Conc: 585.35 ng/ml



#16 AR-1242-1

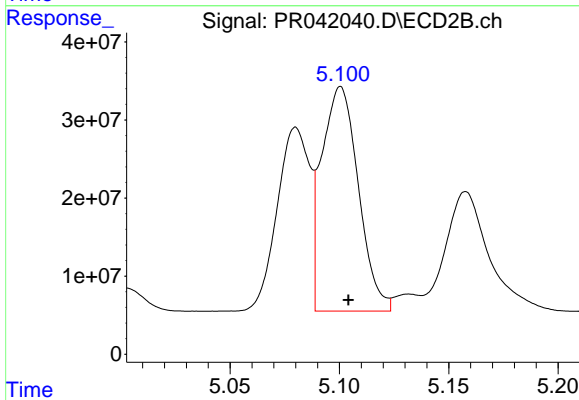
R.T.: 5.080 min
Delta R.T.: -0.004 min
Response: 243100847
Conc: 572.41 ng/ml



#17 AR-1242-2

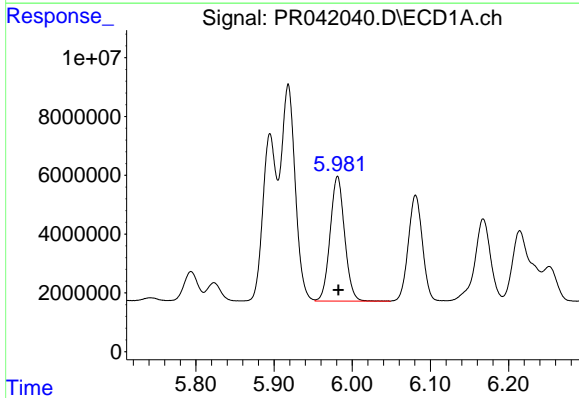
R.T.: 5.918 min
 Delta R.T.: -0.002 min
 Response: 93366772
 Conc: 601.39 ng/ml

Instrument :
 ECD_R
 ClientSampled :
 AR1660372



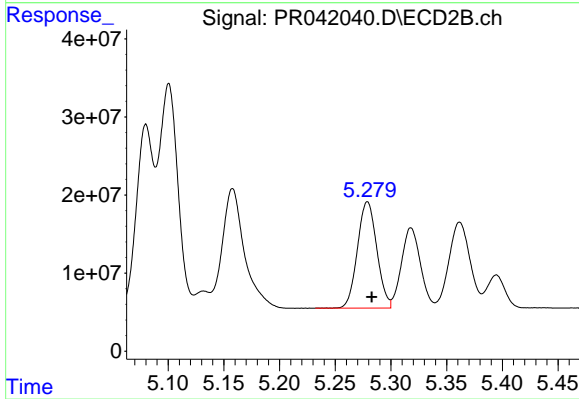
#17 AR-1242-2

R.T.: 5.101 min
 Delta R.T.: -0.004 min
 Response: 336245010
 Conc: 590.83 ng/ml



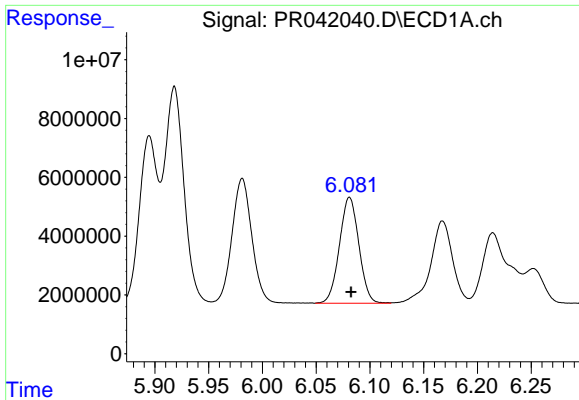
#18 AR-1242-3

R.T.: 5.981 min
 Delta R.T.: -0.001 min
 Response: 54577188
 Conc: 581.67 ng/ml



#18 AR-1242-3

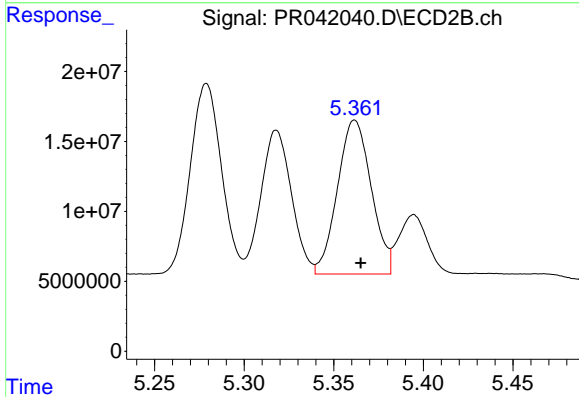
R.T.: 5.279 min
 Delta R.T.: -0.004 min
 Response: 165066504
 Conc: 571.94 ng/ml



#19 AR-1242-4

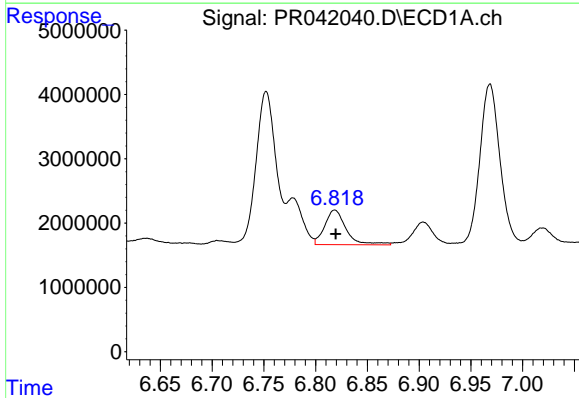
R.T.: 6.081 min
Delta R.T.: -0.001 min
Response: 45323420
Conc: 583.41 ng/ml

Instrument :
ECD_R
ClientSampleId :
AR1660372



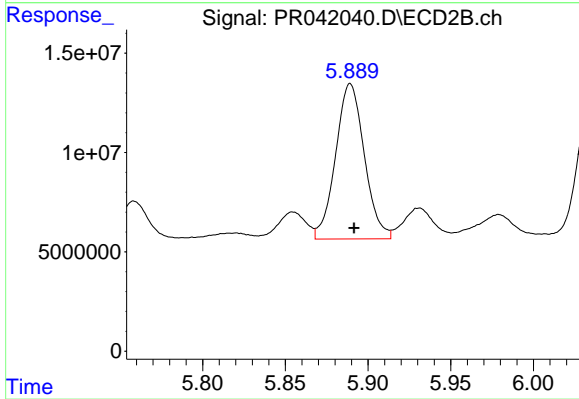
#19 AR-1242-4

R.T.: 5.362 min
Delta R.T.: -0.003 min
Response: 144618425
Conc: 555.54 ng/ml



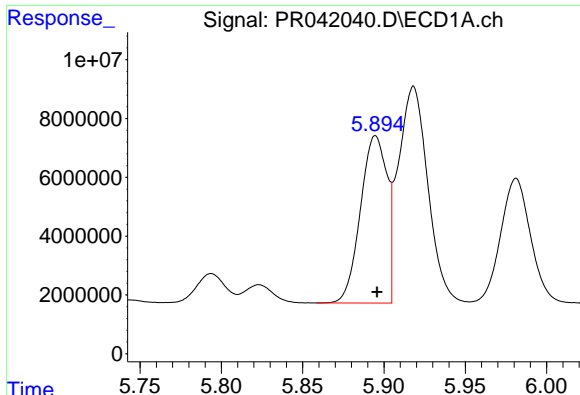
#20 AR-1242-5

R.T.: 6.819 min
Delta R.T.: 0.000 min
Response: 7764684
Conc: 88.71 ng/ml



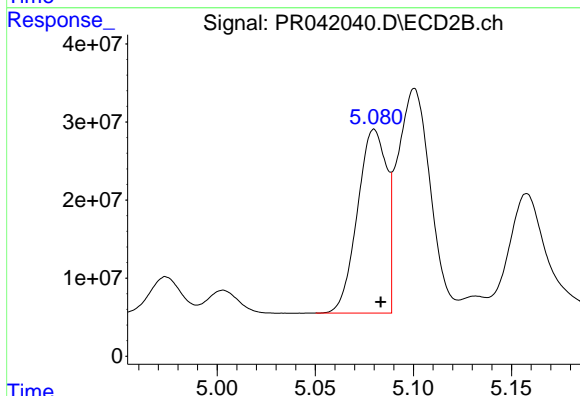
#20 AR-1242-5

R.T.: 5.889 min
Delta R.T.: -0.002 min
Response: 94682917
Conc: 356.90 ng/ml

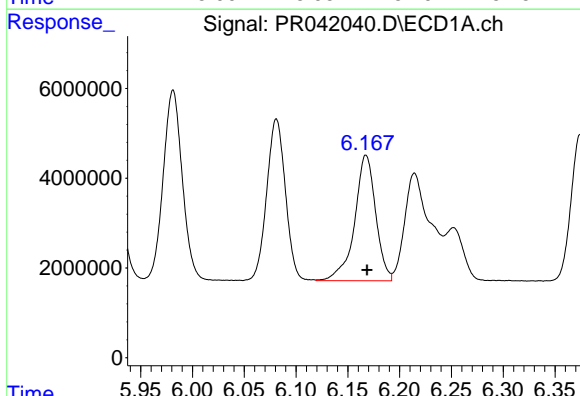


#21 AR-1248-1
 R.T.: 5.895 min
 Delta R.T.: 0.000 min
 Response: 64549352
 Conc: 775.72 ng/ml

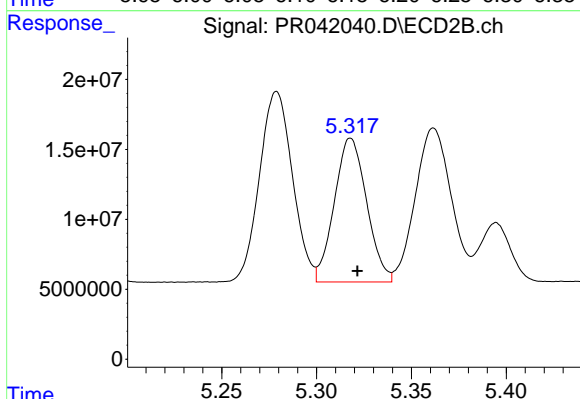
Instrument :
 ECD_R
 ClientSampleId :
 AR1660372



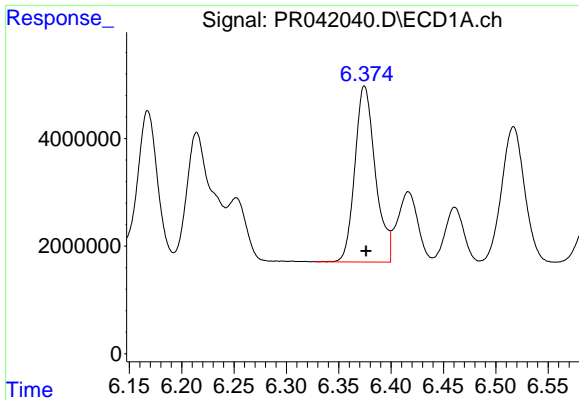
#21 AR-1248-1
 R.T.: 5.080 min
 Delta R.T.: -0.003 min
 Response: 243100847
 Conc: 745.85 ng/ml



#22 AR-1248-2
 R.T.: 6.168 min
 Delta R.T.: 0.000 min
 Response: 39720768
 Conc: 346.14 ng/ml



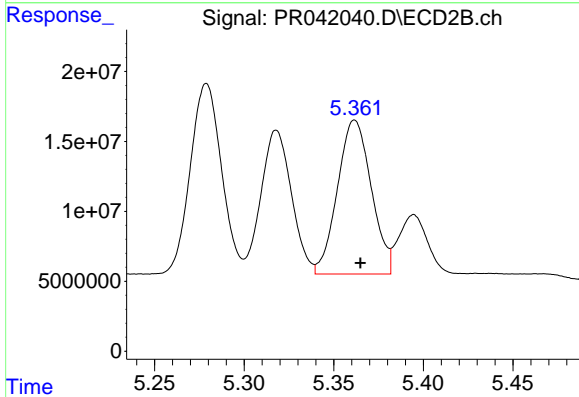
#22 AR-1248-2
 R.T.: 5.318 min
 Delta R.T.: -0.003 min
 Response: 122040925
 Conc: 327.65 ng/ml



#23 AR-1248-3

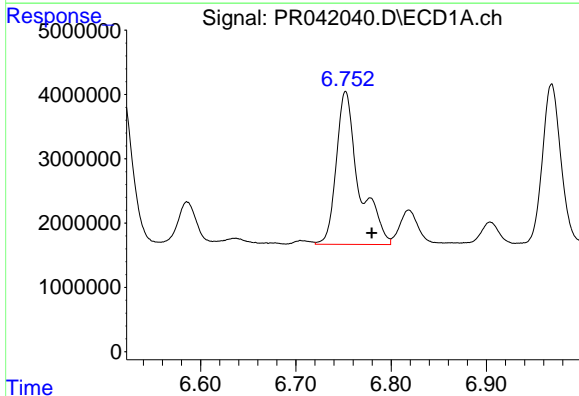
R.T.: 6.375 min
 Delta R.T.: -0.001 min
 Response: 44569046
 Conc: 343.75 ng/ml

Instrument :
 ECD_R
 ClientSampleId :
 AR1660372



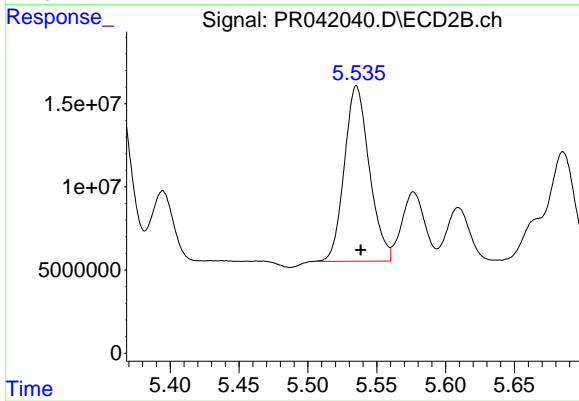
#23 AR-1248-3

R.T.: 5.362 min
 Delta R.T.: -0.003 min
 Response: 144618425
 Conc: 386.35 ng/ml



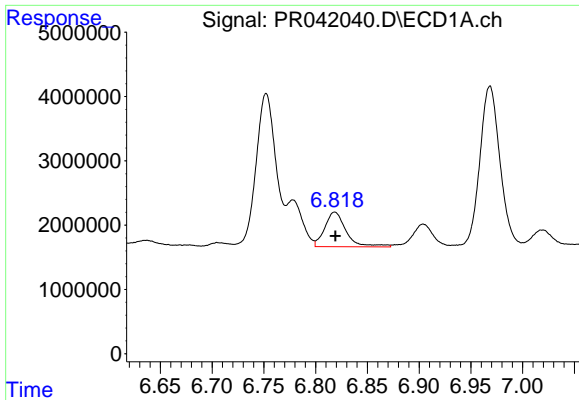
#24 AR-1248-4

R.T.: 6.752 min
 Delta R.T.: -0.027 min
 Response: 39274568
 Conc: 255.95 ng/ml



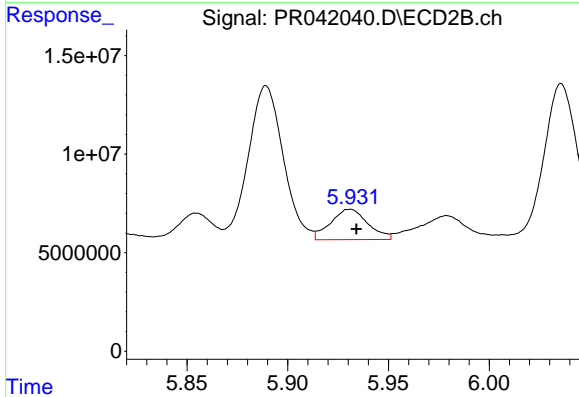
#24 AR-1248-4

R.T.: 5.535 min
 Delta R.T.: -0.003 min
 Response: 133026450
 Conc: 334.01 ng/ml

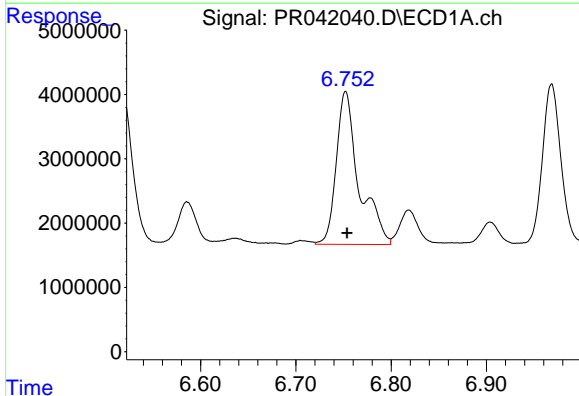


#25 AR-1248-5
 R.T.: 6.819 min
 Delta R.T.: 0.000 min
 Response: 7764684
 Conc: 53.63 ng/ml

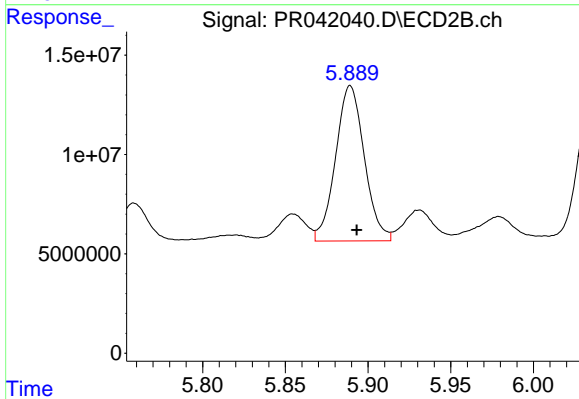
Instrument :
 ECD_R
ClientSampleId :
 AR1660372



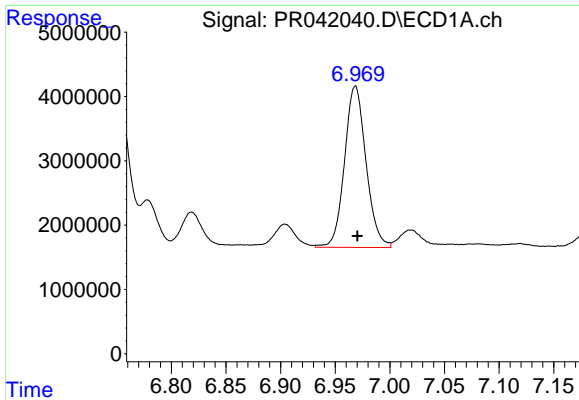
#25 AR-1248-5
 R.T.: 5.931 min
 Delta R.T.: -0.003 min
 Response: 19879271
 Conc: 56.92 ng/ml



#26 AR-1254-1
 R.T.: 6.752 min
 Delta R.T.: -0.001 min
 Response: 39274568
 Conc: 240.49 ng/ml



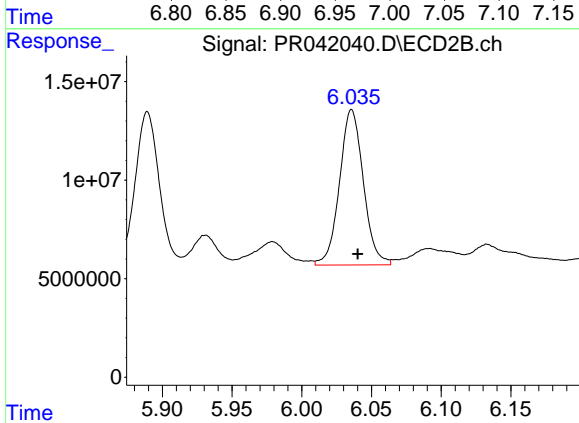
#26 AR-1254-1
 R.T.: 5.889 min
 Delta R.T.: -0.004 min
 Response: 94682917
 Conc: 178.74 ng/ml



#27 AR-1254-2

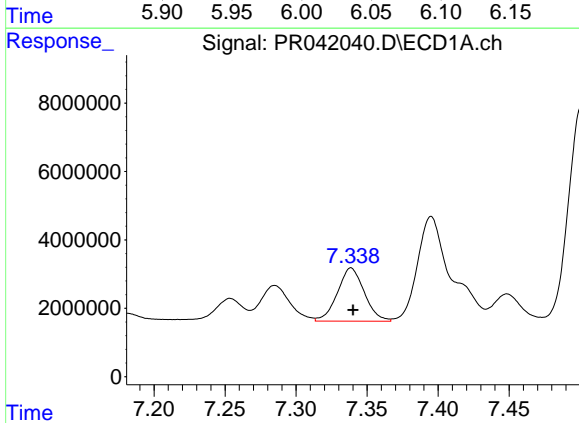
R.T.: 6.968 min
 Delta R.T.: -0.002 min
 Response: 34363539
 Conc: 138.51 ng/ml

Instrument :
 ECD_R
 ClientSampleId :
 AR1660372



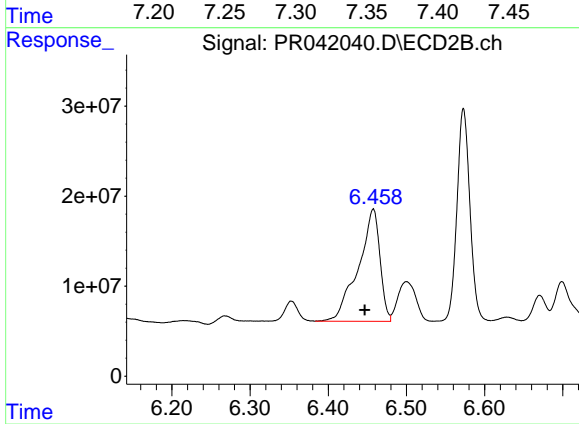
#27 AR-1254-2

R.T.: 6.036 min
 Delta R.T.: -0.004 min
 Response: 93819350
 Conc: 187.13 ng/ml



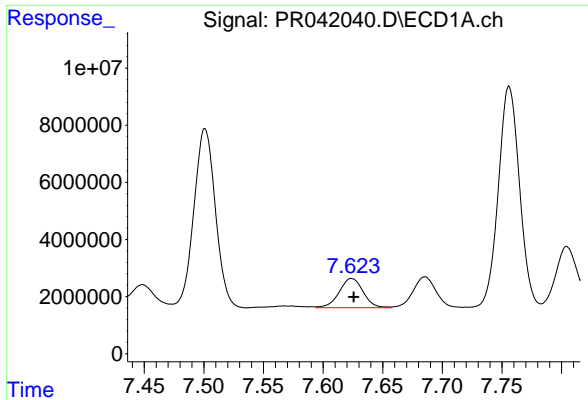
#28 AR-1254-3

R.T.: 7.339 min
 Delta R.T.: -0.001 min
 Response: 20493257
 Conc: 75.94 ng/ml



#28 AR-1254-3

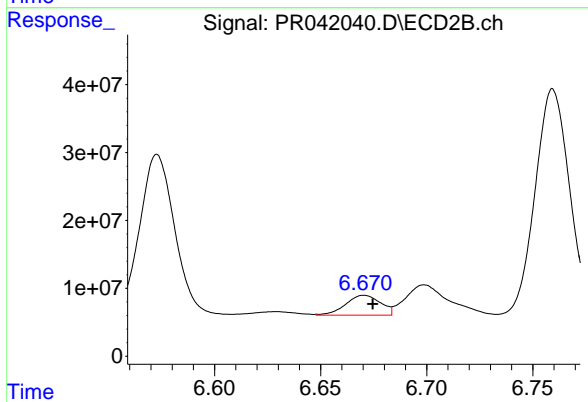
R.T.: 6.458 min
 Delta R.T.: 0.011 min
 Response: 240518990
 Conc: 254.94 ng/ml



#29 AR-1254-4

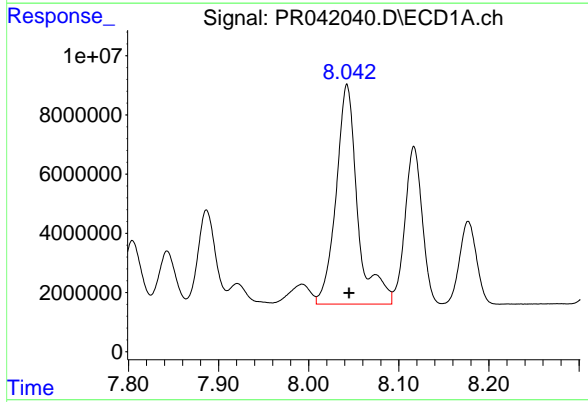
R.T.: 7.624 min
 Delta R.T.: -0.002 min
 Response: 14378028
 Conc: 70.84 ng/ml

Instrument :
 ECD_R
ClientSampled :
 AR1660372



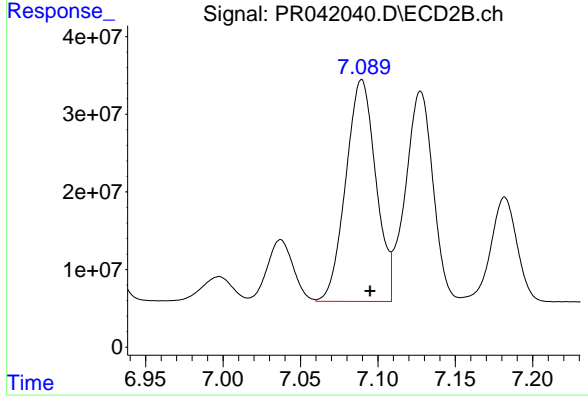
#29 AR-1254-4

R.T.: 6.671 min
 Delta R.T.: -0.004 min
 Response: 33270068
 Conc: 50.25 ng/ml



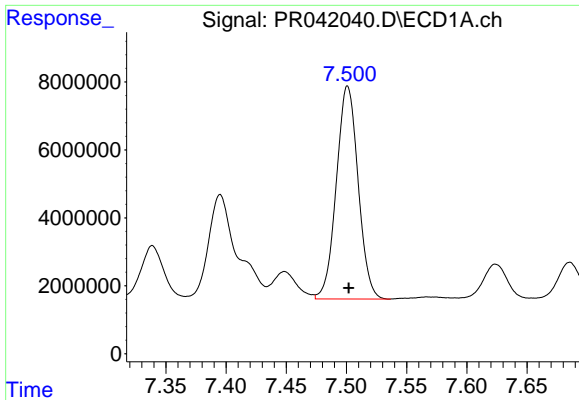
#30 AR-1254-5

R.T.: 8.043 min
 Delta R.T.: -0.002 min
 Response: 123693739
 Conc: 581.67 ng/ml



#30 AR-1254-5

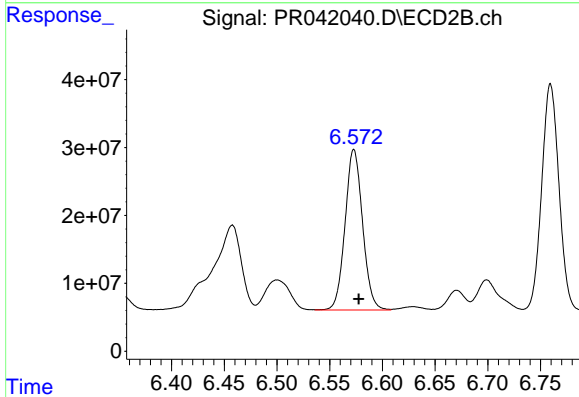
R.T.: 7.090 min
 Delta R.T.: -0.005 min
 Response: 385935518
 Conc: 449.47 ng/ml



#31 AR-1260-1

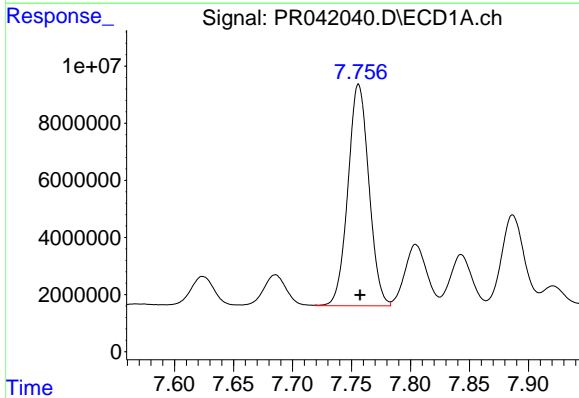
R.T.: 7.501 min
 Delta R.T.: 0.000 min
 Response: 78923360
 Conc: 416.56 ng/ml

Instrument :
 ECD_R
 ClientSampleId :
 AR1660372



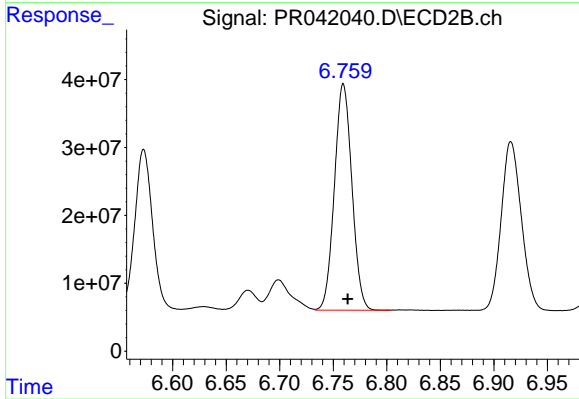
#31 AR-1260-1

R.T.: 6.573 min
 Delta R.T.: -0.005 min
 Response: 273367181
 Conc: 461.17 ng/ml



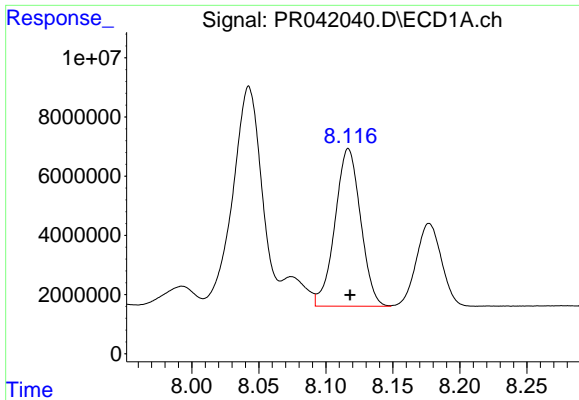
#32 AR-1260-2

R.T.: 7.756 min
 Delta R.T.: -0.001 min
 Response: 96002651
 Conc: 406.17 ng/ml



#32 AR-1260-2

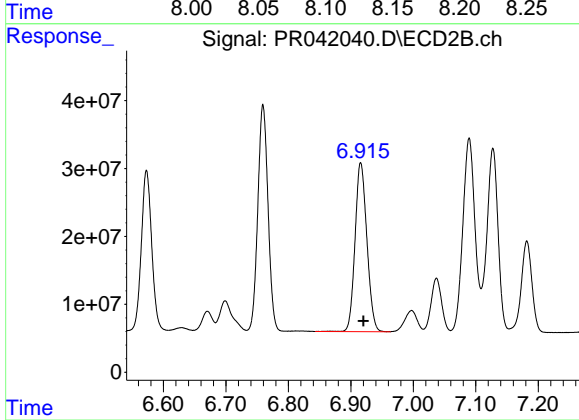
R.T.: 6.759 min
 Delta R.T.: -0.004 min
 Response: 378916476
 Conc: 464.77 ng/ml



#33 AR-1260-3

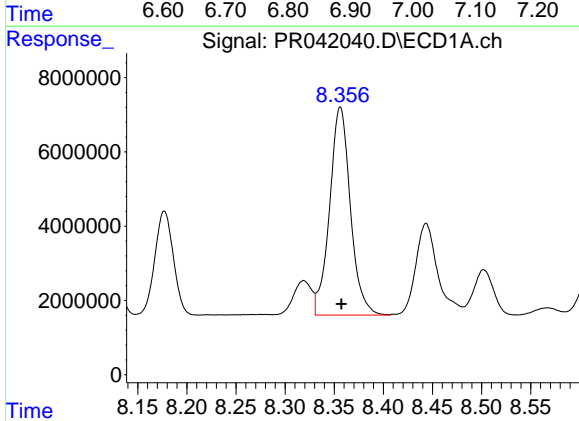
R.T.: 8.117 min
Delta R.T.: -0.001 min
Response: 70817794
Conc: 377.24 ng/ml

Instrument :
ECD_R
ClientSampleId :
AR1660372



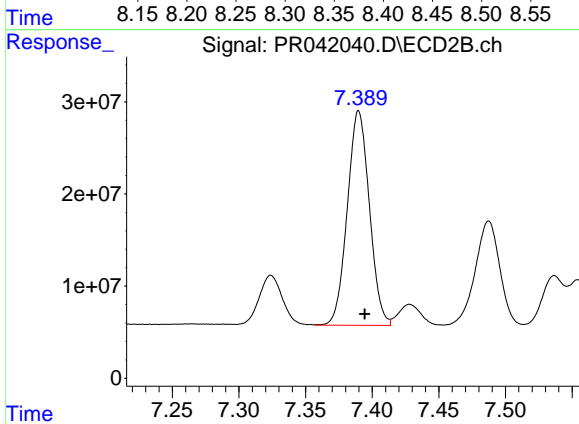
#33 AR-1260-3

R.T.: 6.916 min
Delta R.T.: -0.004 min
Response: 327366625
Conc: 473.55 ng/ml



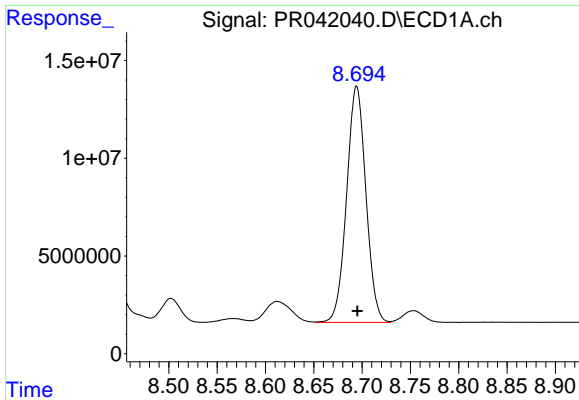
#34 AR-1260-4

R.T.: 8.356 min
Delta R.T.: -0.001 min
Response: 82676830
Conc: 411.40 ng/ml



#34 AR-1260-4

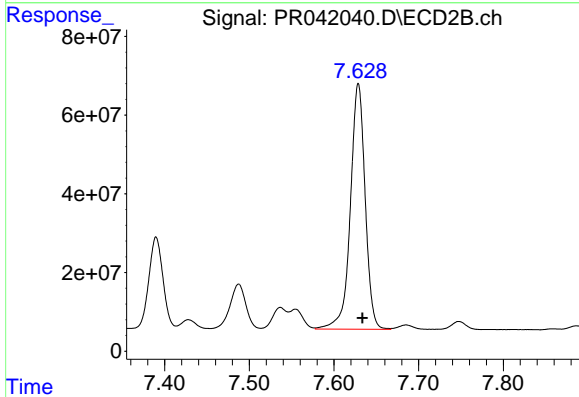
R.T.: 7.390 min
Delta R.T.: -0.005 min
Response: 268619711
Conc: 462.90 ng/ml



#35 AR-1260-5

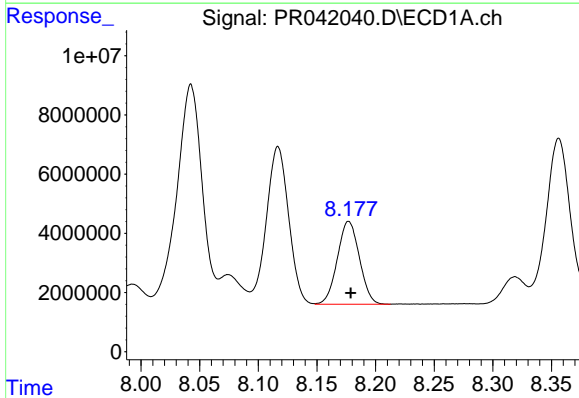
R.T.: 8.694 min
 Delta R.T.: 0.000 min
 Response: 167610283
 Conc: 387.19 ng/ml

Instrument :
 ECD_R
 ClientSampleId :
 AR1660372



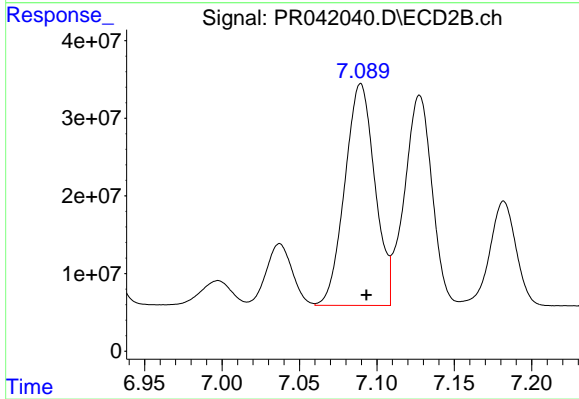
#35 AR-1260-5

R.T.: 7.629 min
 Delta R.T.: -0.005 min
 Response: 757945949
 Conc: 466.18 ng/ml



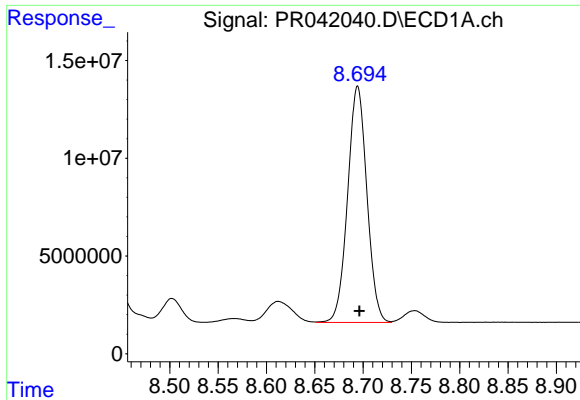
#36 AR-1262-1

R.T.: 8.177 min
 Delta R.T.: -0.002 min
 Response: 36615697
 Conc: 388.99 ng/ml



#36 AR-1262-1

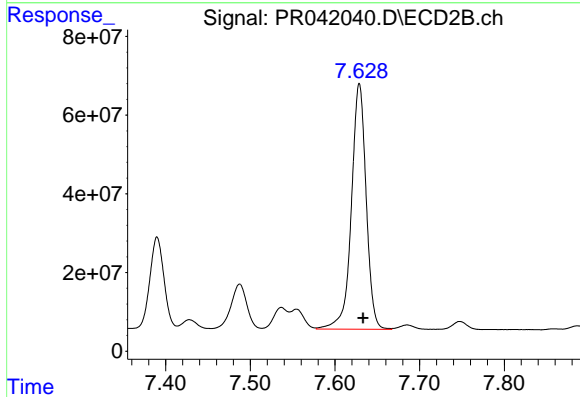
R.T.: 7.090 min
 Delta R.T.: -0.004 min
 Response: 385935518
 Conc: 885.62 ng/ml



#37 AR-1262-2

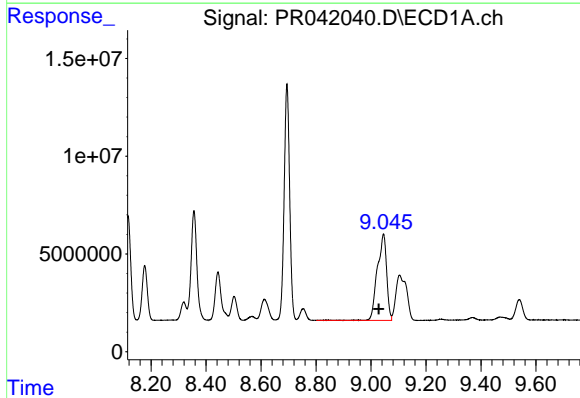
R.T.: 8.694 min
 Delta R.T.: -0.002 min
 Response: 167610283
 Conc: 388.58 ng/ml

Instrument :
 ECD_R
 ClientSampleId :
 AR1660372



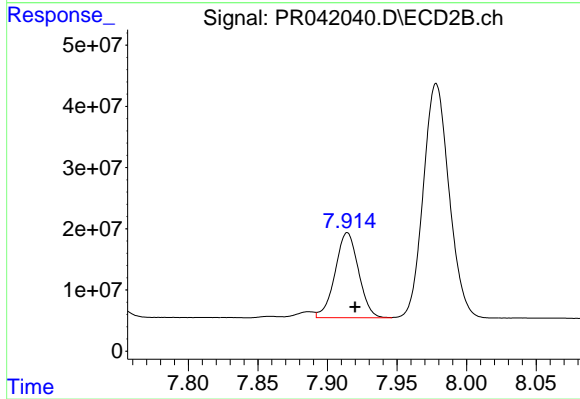
#37 AR-1262-2

R.T.: 7.629 min
 Delta R.T.: -0.004 min
 Response: 757945949
 Conc: 440.28 ng/ml



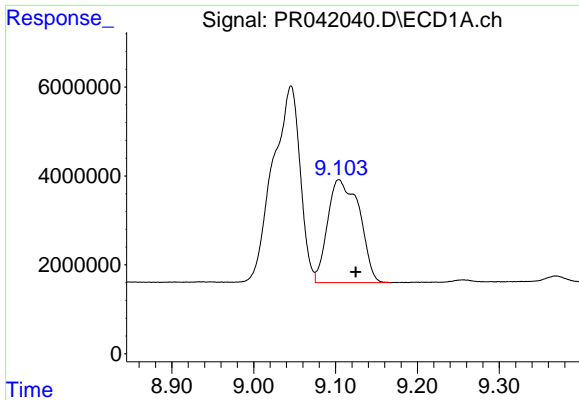
#38 AR-1262-3

R.T.: 9.045 min
 Delta R.T.: 0.017 min
 Response: 103892861
 Conc: 372.72 ng/ml



#38 AR-1262-3

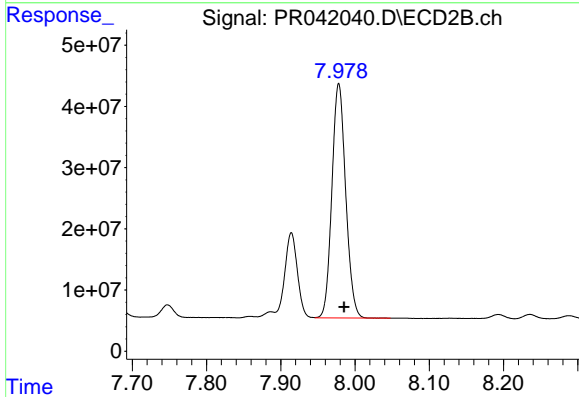
R.T.: 7.914 min
 Delta R.T.: -0.005 min
 Response: 163219550
 Conc: 250.06 ng/ml



#39 AR-1262-4

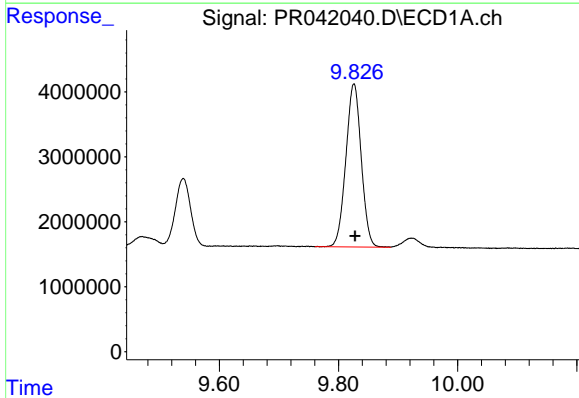
R.T.: 9.104 min
 Delta R.T.: -0.020 min
 Response: 62490018
 Conc: 305.02 ng/ml

Instrument :
 ECD_R
 ClientSampleId :
 AR1660372



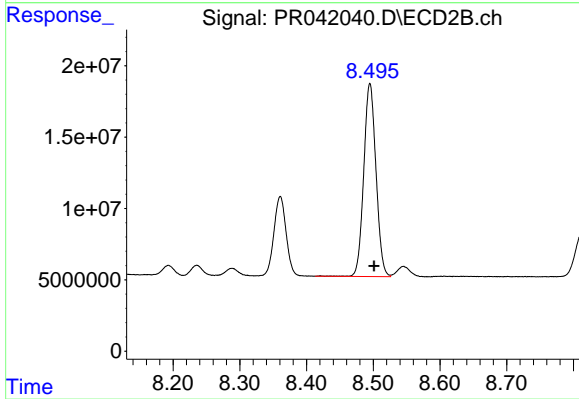
#39 AR-1262-4

R.T.: 7.978 min
 Delta R.T.: -0.007 min
 Response: 494216046
 Conc: 422.93 ng/ml



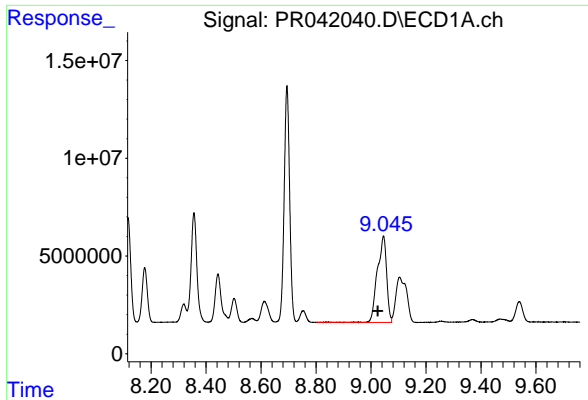
#40 AR-1262-5

R.T.: 9.826 min
 Delta R.T.: -0.002 min
 Response: 45017791
 Conc: 312.08 ng/ml



#40 AR-1262-5

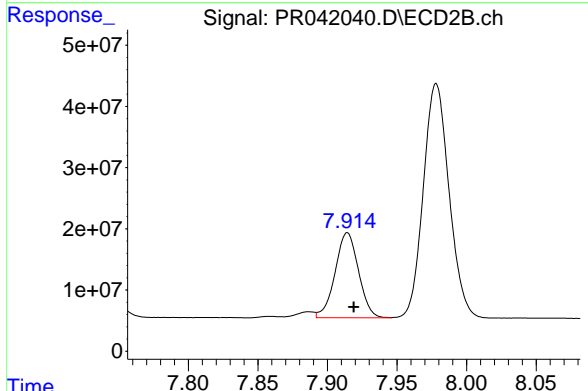
R.T.: 8.495 min
 Delta R.T.: -0.006 min
 Response: 172273800
 Conc: 322.06 ng/ml



#41 AR-1268-1

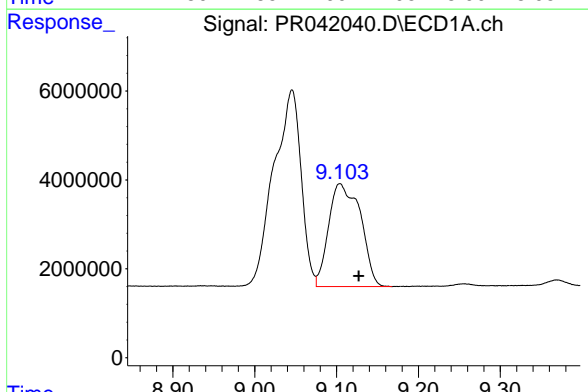
R.T.: 9.045 min
 Delta R.T.: 0.020 min
 Response: 103892861
 Conc: 189.16 ng/ml

Instrument :
 ECD_R
 ClientSampleId :
 AR1660372



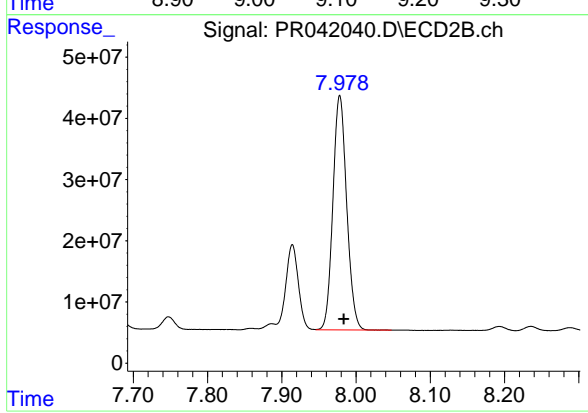
#41 AR-1268-1

R.T.: 7.914 min
 Delta R.T.: -0.005 min
 Response: 163219550
 Conc: 74.44 ng/ml



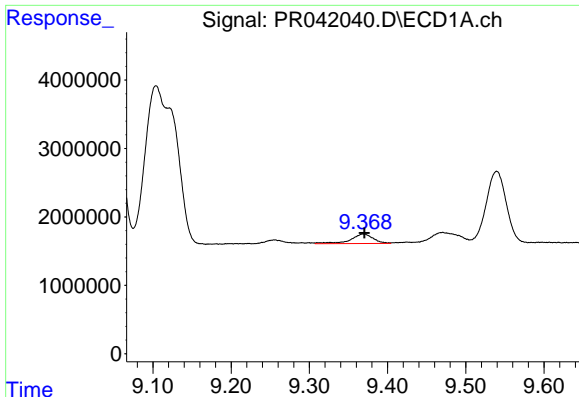
#42 AR-1268-2

R.T.: 9.104 min
 Delta R.T.: -0.023 min
 Response: 62490018
 Conc: 125.69 ng/ml



#42 AR-1268-2

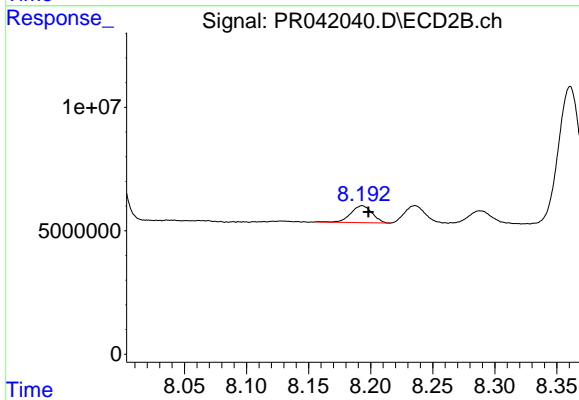
R.T.: 7.978 min
 Delta R.T.: -0.005 min
 Response: 494216046
 Conc: 248.37 ng/ml



#43 AR-1268-3

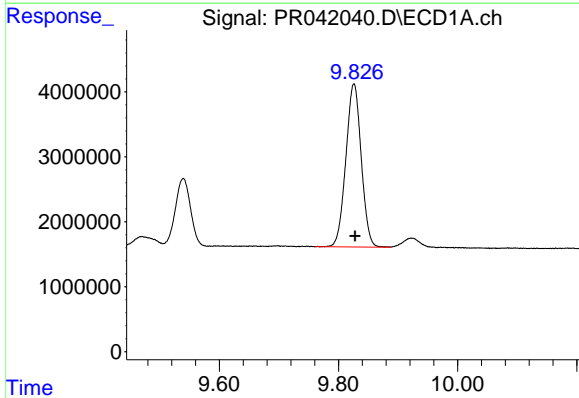
R.T.: 9.369 min
 Delta R.T.: -0.001 min
 Response: 2760060
 Conc: 6.77 ng/ml

Instrument :
 ECD_R
 ClientSampleId :
 AR1660372



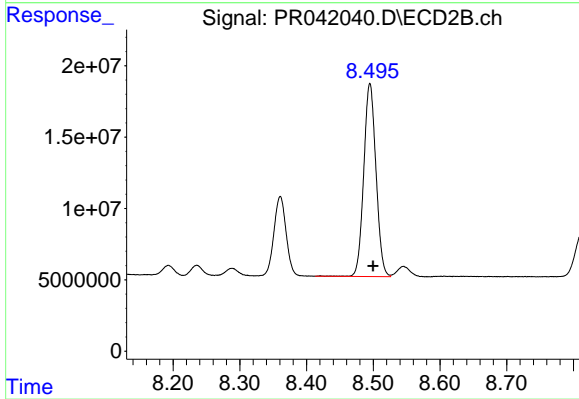
#43 AR-1268-3

R.T.: 8.193 min
 Delta R.T.: -0.005 min
 Response: 8153355
 Conc: 4.87 ng/ml



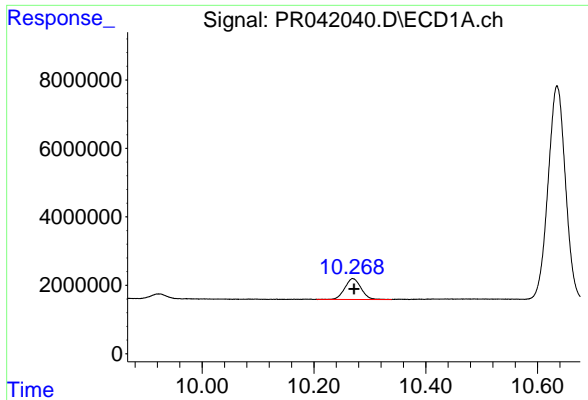
#44 AR-1268-4

R.T.: 9.826 min
 Delta R.T.: -0.002 min
 Response: 45017791
 Conc: 256.59 ng/ml



#44 AR-1268-4

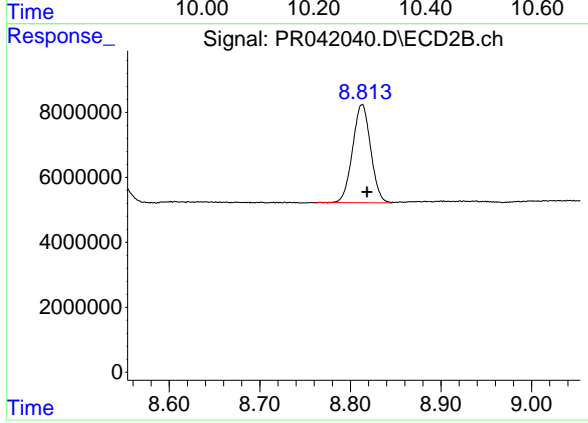
R.T.: 8.495 min
 Delta R.T.: -0.005 min
 Response: 172273800
 Conc: 266.95 ng/ml



#45 AR-1268-5

R.T.: 10.270 min
Delta R.T.: -0.002 min
Response: 12289157
Conc: 9.43 ng/ml

Instrument :
ECD_R
ClientSampleId :
AR1660372



#45 AR-1268-5

R.T.: 8.813 min
Delta R.T.: -0.005 min
Response: 41971287
Conc: 9.15 ng/ml