

Data Path : Z:\pestpcbsrv\HPCHEM1\ECD\_R\Data\PR100719\  
 Data File : PR042041.D  
 Signal(s) : Signal #1: ECD1A.ch Signal #2: ECD2B.ch  
 Acq On : 07 Oct 2019 15:15  
 Operator : SM\AJ  
 Sample : AR1242CCC400  
 Misc :  
 ALS Vial : 4 Sample Multiplier: 1

Instrument :  
 ECD\_R  
 ClientSampleId :  
 AR1242372

Integration File signal 1: autoint1.e  
 Integration File signal 2: autoint2.e  
 Quant Time: Oct 08 02:38:09 2019  
 Quant Method : Z:\pestpcbsrv\HPCHEM1\ECD\_R\Method\PR100319CLP.M  
 Quant Title : GC EXTRACTABLES  
 QLast Update : Fri Oct 04 06:59:35 2019  
 Response via : Initial Calibration  
 Integrator: ChemStation

Volume Inj. : 1 µl  
 Signal #1 Phase : ZB MR1 Signal #2 Phase: ZB MR2  
 Signal #1 Info : 30Mx0.32mmx 0.5µm Signal #2 Info : 30M x 0.32mm x 0.25µm

Compound	RT#1	RT#2	Resp#1	Resp#2	ng/ml	ng/ml
System Monitoring Compounds						
1) SA Tetrachlo...	4.720	3.982	96950149	370.5E6	23.833	24.229
2) SA Decachlor...	10.637	9.094	121.3E6	418.0E6	35.300	42.163
Target Compounds						
3) L1 AR-1016-1	5.897	5.080	50300373	192.9E6	350.356	354.771
4) L1 AR-1016-2	5.920	5.100	72119752	261.3E6	352.670	362.089
5) L1 AR-1016-3	5.983	5.279	42542425	129.1E6	349.931	353.921
6) L1 AR-1016-4	6.083	5.317	35128755	90522255	345.412	326.195
7) L1 AR-1016-5	6.377	5.535	35216911	104.9E6	353.687	339.226
8) L2 AR-1221-1	4.924	4.194	4512100	18746828	109.902	110.968
9) L2 AR-1221-2	5.016	4.282	6073351	27415051	209.329	223.072
10) L2 AR-1221-3	5.095	4.359	25651299	103.9E6	263.651	266.712
11) L3 AR-1232-1	5.095	4.359	25651299	103.9E6	306.547	304.886
12) L3 AR-1232-2	5.630	5.100	34011663	261.3E6	789.523	767.480
13) L3 AR-1232-3	5.920	5.279	72119752	129.1E6	802.086	766.309
14) L3 AR-1232-4	6.083	5.361	35128755	112.2E6	789.345	787.740
15) L3 AR-1232-5	6.170	5.535	29114809	104.9E6	886.251	778.423
16) L4 AR-1242-1	5.897	5.080	50300373	192.9E6	456.134	454.091
17) L4 AR-1242-2	5.920	5.100	72119752	261.3E6	464.538	459.221
18) L4 AR-1242-3	5.983	5.279	42542425	129.1E6	453.404	447.170
19) L4 AR-1242-4	6.083	5.361	35128755	112.2E6	452.179	431.025
20) L4 AR-1242-5	6.820	5.887	38595525	119.6E6	440.950	450.916
21) L5 AR-1248-1	5.897	5.080	50300373	192.9E6	604.482	591.680
22) L5 AR-1248-2	6.170	5.317	29114809	90522255	253.714	243.032
23) L5 AR-1248-3	6.377	5.361	35216911	112.2E6	271.616	299.757
24) L5 AR-1248-4	6.781	5.535	37024815	104.9E6	241.288	263.368
25) L5 AR-1248-5	6.820	5.930	38595525	103.4E6	266.563	296.160
26) L6 AR-1254-1	6.753	5.887	27964380	119.6E6	171.233	225.821 #
27) L6 AR-1254-2	6.979	6.035	32634308	30176905	131.537	60.191 #
28) L6 AR-1254-3	7.341	6.443	13071456	46480756	48.438	49.267
29) L6 AR-1254-4	7.626	6.671	10261249	45526663	50.559	68.763 #
30) L6 AR-1254-5	8.045	7.092	2415695	9365000	11.360	10.907
31) L7 AR-1260-1	7.504	6.590	2120718	18440995	11.193	31.110 #
32) L7 AR-1260-2	7.754	6.759	2876783	9124240	12.171	11.192
33) L7 AR-1260-3	0.000	6.915	0	6063948	N.D.	8.772 #
34) L7 AR-1260-4	8.350	0.000	1465383	0	7.292	N.D. #
35) L7 AR-1260-5	8.697	0.000	674441	0	1.558	N.D. #
36) L8 AR-1262-1	0.000	7.092	0	9365000	N.D.	21.490 #
37) L8 AR-1262-2	8.697	0.000	674441	0	1.564	N.D. #
45) L9 AR-1268-5	10.273	8.813	1081076	3013047	0.830	0.657

(f)=RT Delta > 1/2 Window (#)=Amounts differ by > 25% (m)=manual int.

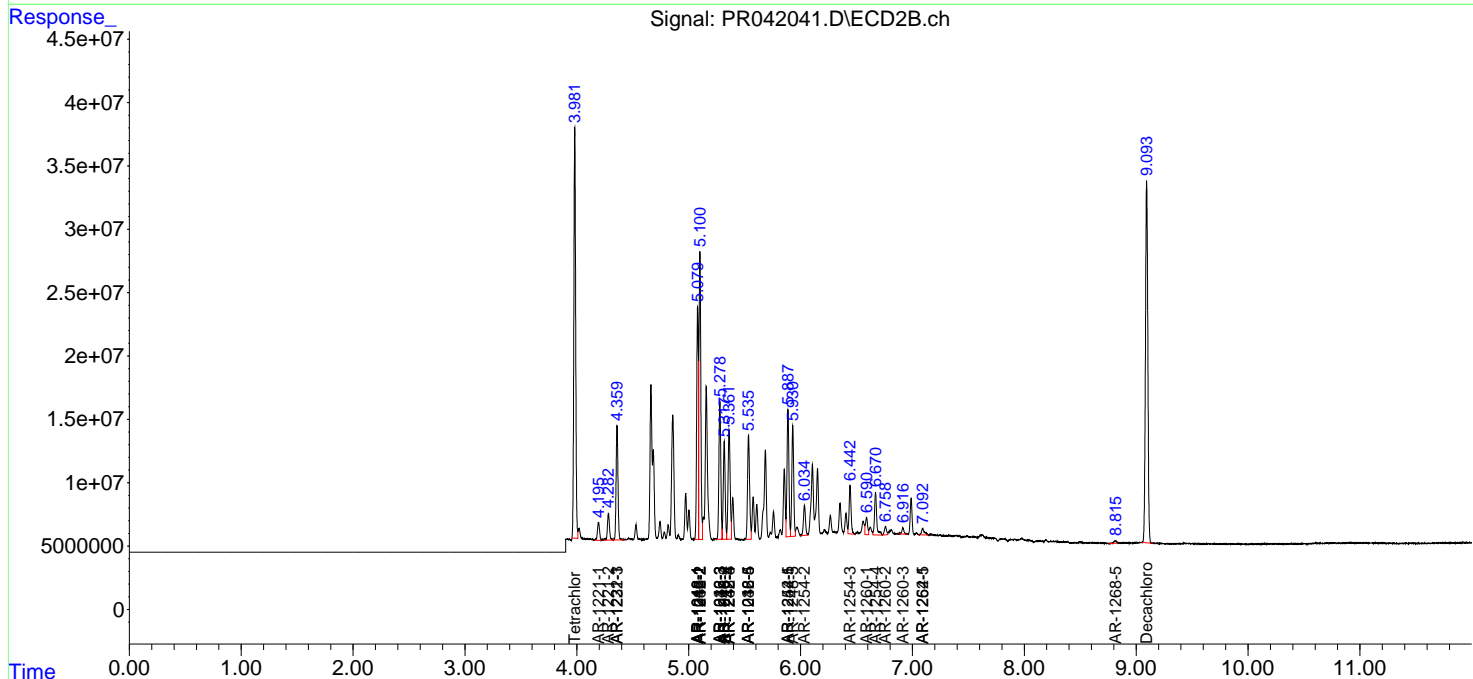
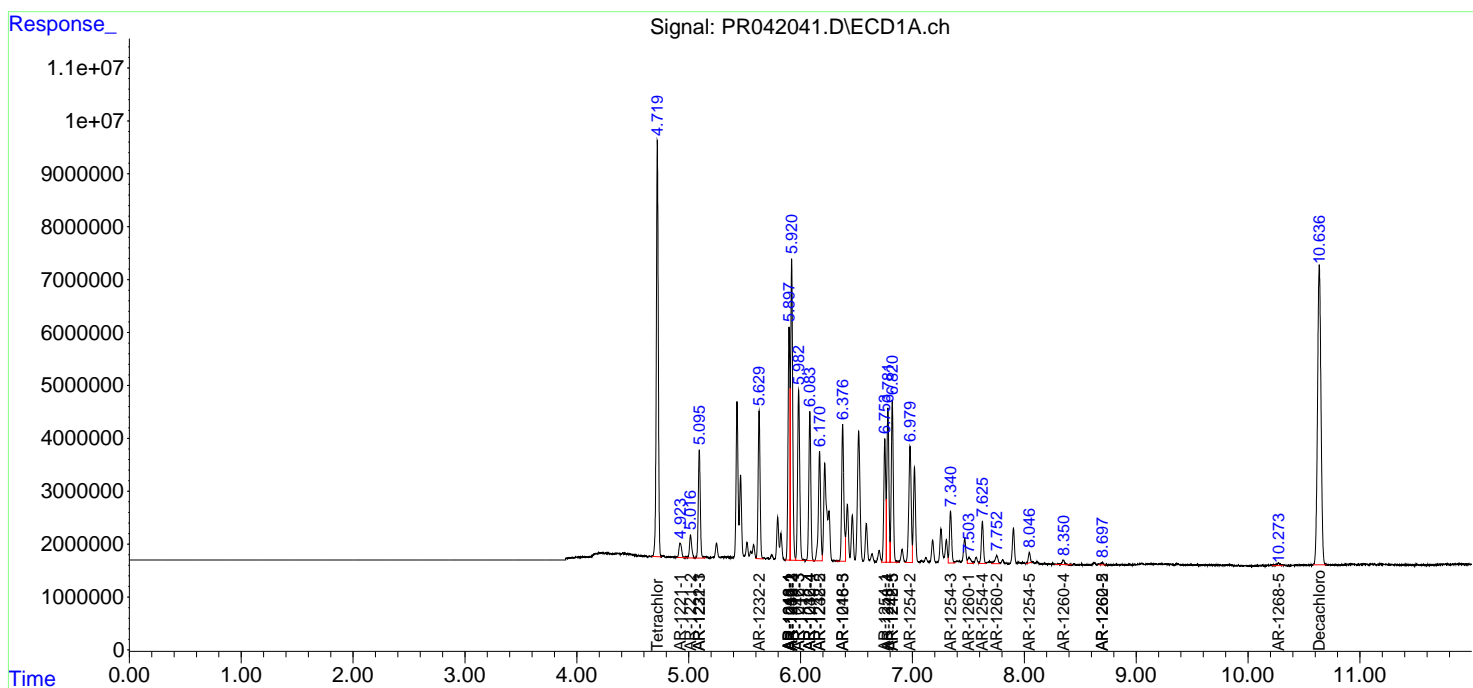
**Instrument :**  
ECD\_R  
**ClientSampleId :**  
AR1242372

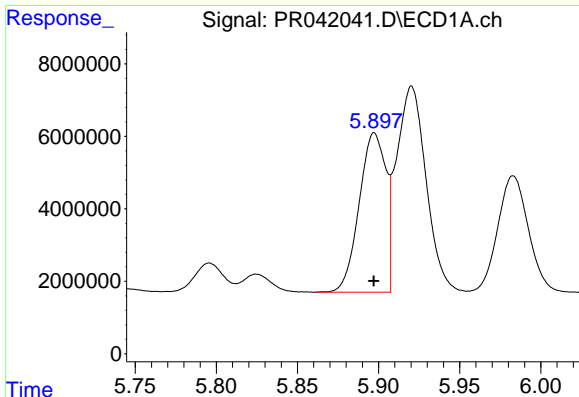
Data Path : Z:\pestpcbsrv\HPCHEM1\ECD\_R\Data\PR100719\  
 Data File : PR042041.D  
 Signal(s) : Signal #1: ECD1A.ch Signal #2: ECD2B.ch  
 Acq On : 07 Oct 2019 15:15  
 Operator : SM\AJ  
 Sample : AR1242CCC400  
 Misc :  
 ALS Vial : 4 Sample Multiplier: 1

Instrument :  
 ECD\_R  
 ClientSampled :  
 AR1242372

Integration File signal 1: autoint1.e  
 Integration File signal 2: autoint2.e  
 Quant Time: Oct 08 02:38:09 2019  
 Quant Method : Z:\pestpcbsrv\HPCHEM1\ECD\_R\Method\PR100319CLP.M  
 Quant Title : GC EXTRACTABLES  
 QLast Update : Fri Oct 04 06:59:35 2019  
 Response via : Initial Calibration  
 Integrator: ChemStation

Volume Inj. : 1 µl  
 Signal #1 Phase : ZB MR1 Signal #2 Phase: ZB MR2  
 Signal #1 Info : 30Mx0.32mmx 0.5µm Signal #2 Info : 30M x 0.32mm x 0.25µm

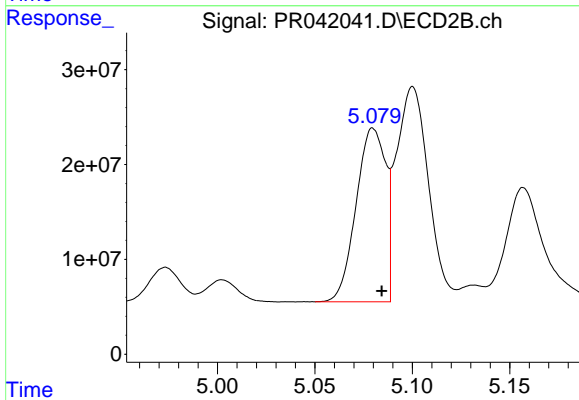




#3 AR-1016-1

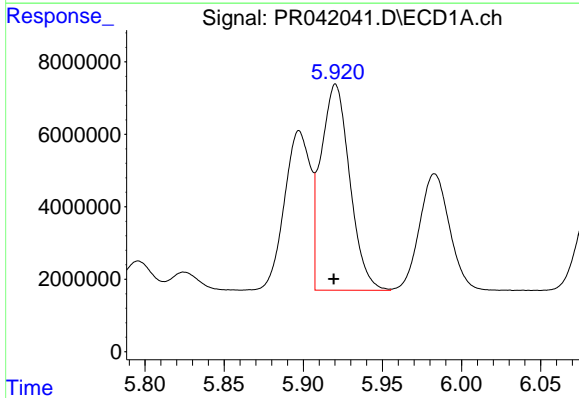
R.T.: 5.897 min  
Delta R.T.: 0.000 min  
Response: 50300373  
Conc: 350.36 ng/ml

Instrument :  
ECD\_R  
ClientSampled :  
AR1242372



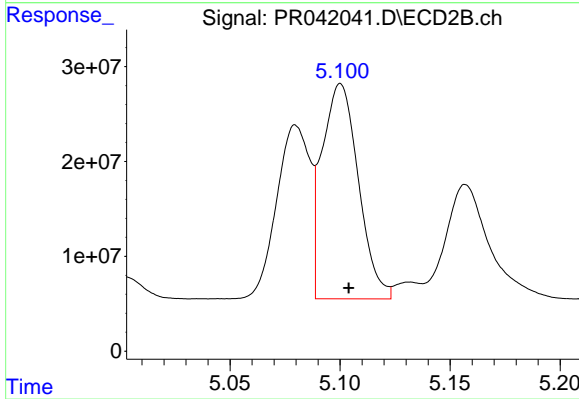
#3 AR-1016-1

R.T.: 5.080 min  
Delta R.T.: -0.004 min  
Response: 192852007  
Conc: 354.77 ng/ml



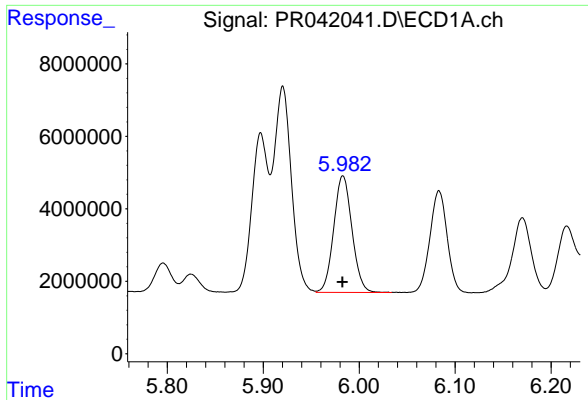
#4 AR-1016-2

R.T.: 5.920 min  
Delta R.T.: 0.001 min  
Response: 72119752  
Conc: 352.67 ng/ml



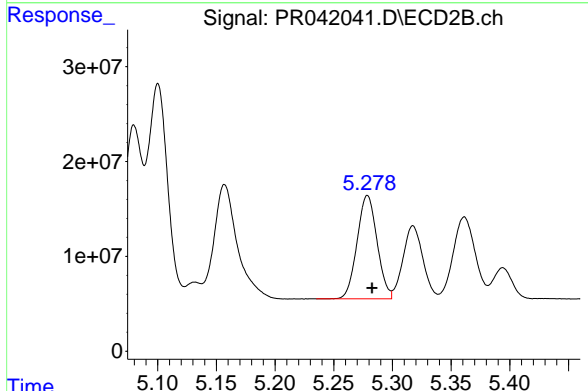
#4 AR-1016-2

R.T.: 5.100 min  
Delta R.T.: -0.004 min  
Response: 261346727  
Conc: 362.09 ng/ml

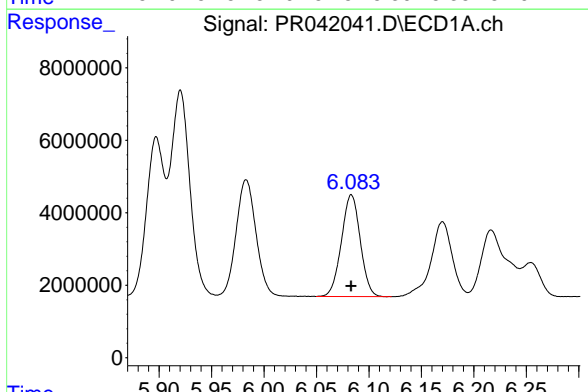


#5 AR-1016-3  
 R.T.: 5.983 min  
 Delta R.T.: 0.000 min  
 Response: 42542425  
 Conc: 349.93 ng/ml

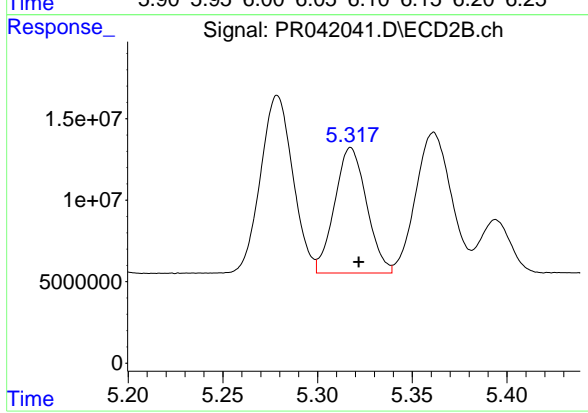
**Instrument :**  
 ECD\_R  
**ClientSampleId :**  
 AR1242372



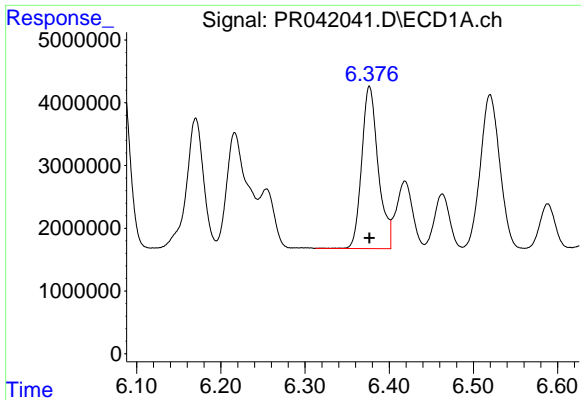
#5 AR-1016-3  
 R.T.: 5.279 min  
 Delta R.T.: -0.004 min  
 Response: 129056213  
 Conc: 353.92 ng/ml



#6 AR-1016-4  
 R.T.: 6.083 min  
 Delta R.T.: 0.000 min  
 Response: 35128755  
 Conc: 345.41 ng/ml



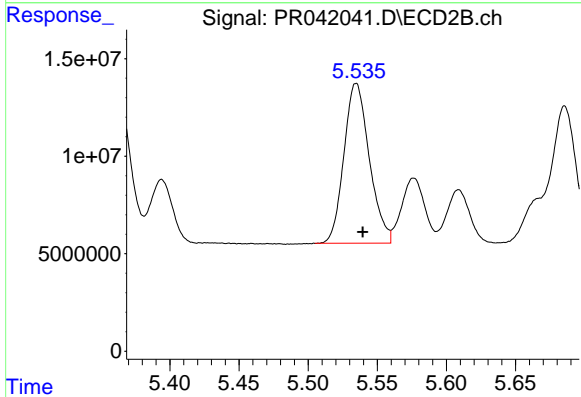
#6 AR-1016-4  
 R.T.: 5.317 min  
 Delta R.T.: -0.004 min  
 Response: 90522255  
 Conc: 326.19 ng/ml



#7 AR-1016-5

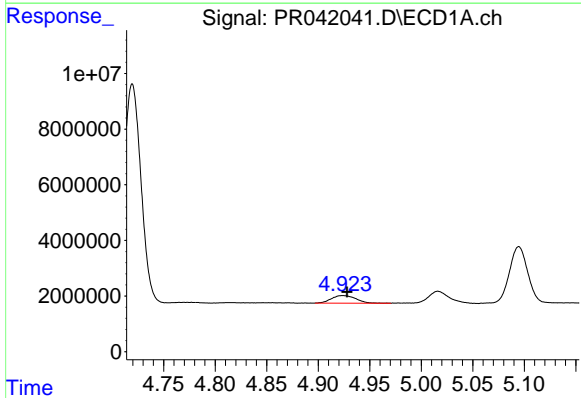
R.T.: 6.377 min  
Delta R.T.: 0.000 min  
Response: 35216911  
Conc: 353.69 ng/ml

Instrument :  
ECD\_R  
ClientSampleId :  
AR1242372



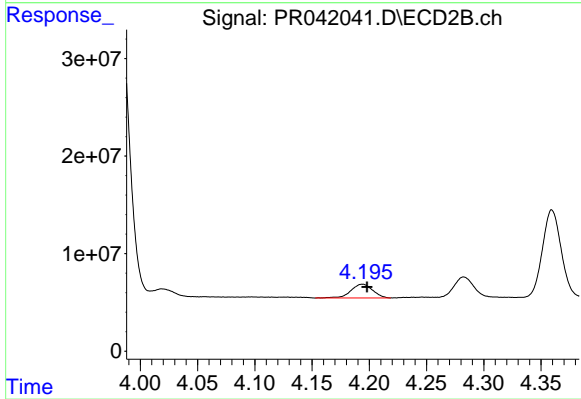
#7 AR-1016-5

R.T.: 5.535 min  
Delta R.T.: -0.005 min  
Response: 104893197  
Conc: 339.23 ng/ml



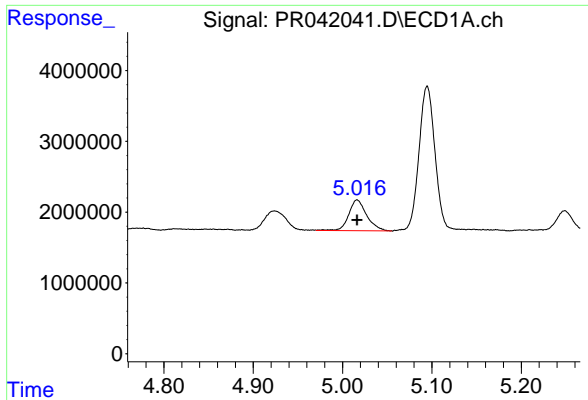
#8 AR-1221-1

R.T.: 4.924 min  
Delta R.T.: -0.004 min  
Response: 4512100  
Conc: 109.90 ng/ml



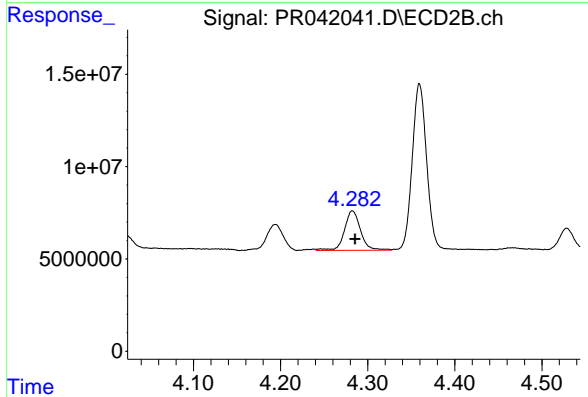
#8 AR-1221-1

R.T.: 4.194 min  
Delta R.T.: -0.004 min  
Response: 18746828  
Conc: 110.97 ng/ml

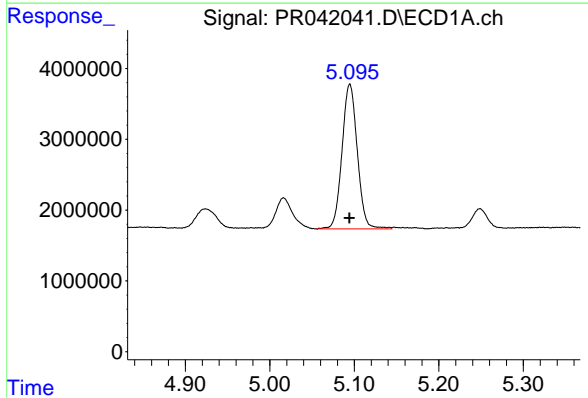


#9 AR-1221-2  
 R.T.: 5.016 min  
 Delta R.T.: 0.000 min  
 Response: 6073351  
 Conc: 209.33 ng/ml

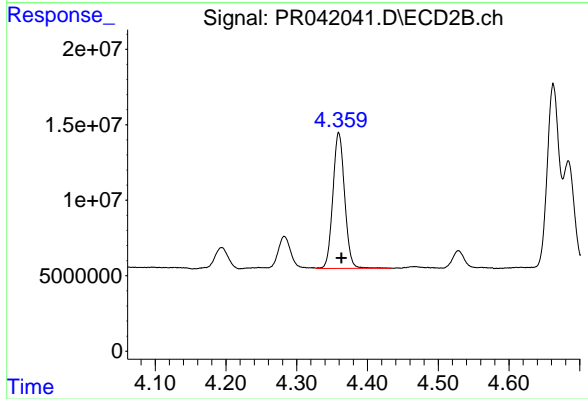
Instrument :  
 ECD\_R  
 ClientSampleId :  
 AR1242372



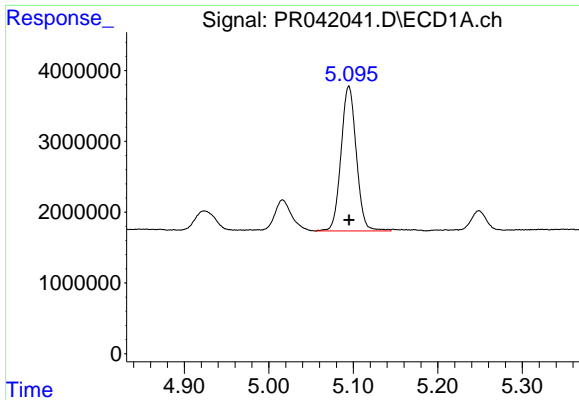
#9 AR-1221-2  
 R.T.: 4.282 min  
 Delta R.T.: -0.003 min  
 Response: 27415051  
 Conc: 223.07 ng/ml



#10 AR-1221-3  
 R.T.: 5.095 min  
 Delta R.T.: 0.000 min  
 Response: 25651299  
 Conc: 263.65 ng/ml



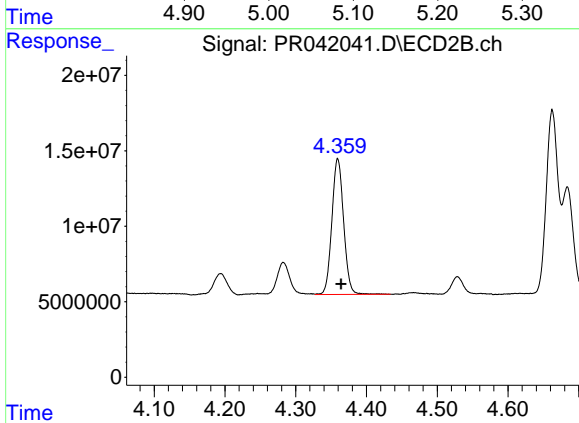
#10 AR-1221-3  
 R.T.: 4.359 min  
 Delta R.T.: -0.004 min  
 Response: 103883940  
 Conc: 266.71 ng/ml



#11 AR-1232-1

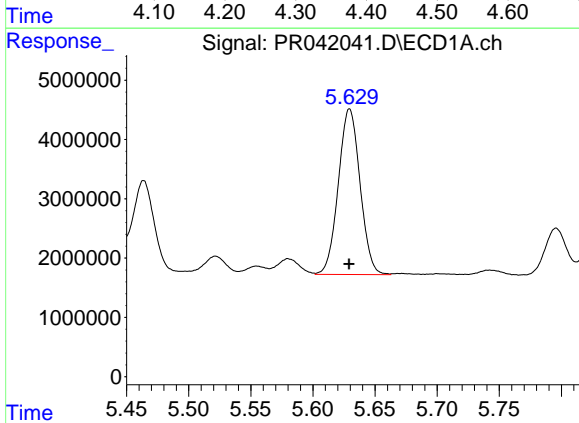
R.T.: 5.095 min  
 Delta R.T.: 0.000 min  
 Response: 25651299  
 Conc: 306.55 ng/ml

**Instrument :**  
 ECD\_R  
**ClientSampled :**  
 AR1242372



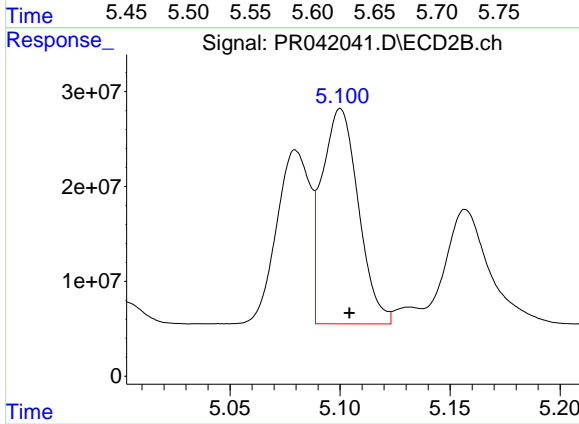
#11 AR-1232-1

R.T.: 4.359 min  
 Delta R.T.: -0.005 min  
 Response: 103883940  
 Conc: 304.89 ng/ml



#12 AR-1232-2

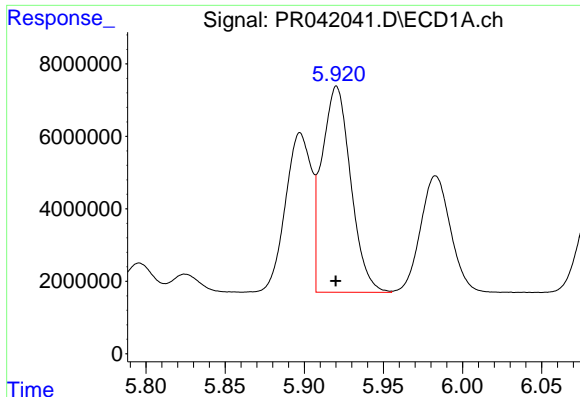
R.T.: 5.630 min  
 Delta R.T.: 0.000 min  
 Response: 34011663  
 Conc: 789.52 ng/ml



#12 AR-1232-2

R.T.: 5.100 min  
 Delta R.T.: -0.004 min  
 Response: 261346727  
 Conc: 767.48 ng/ml

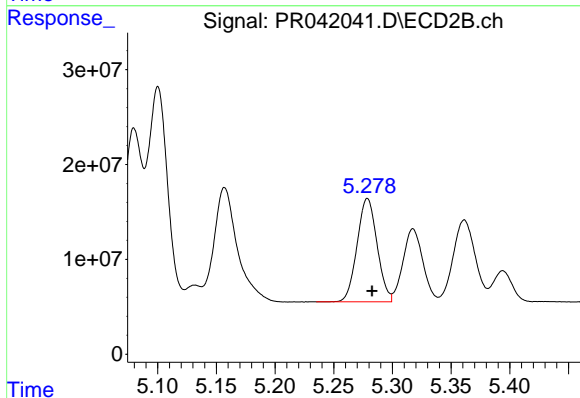




#13 AR-1232-3

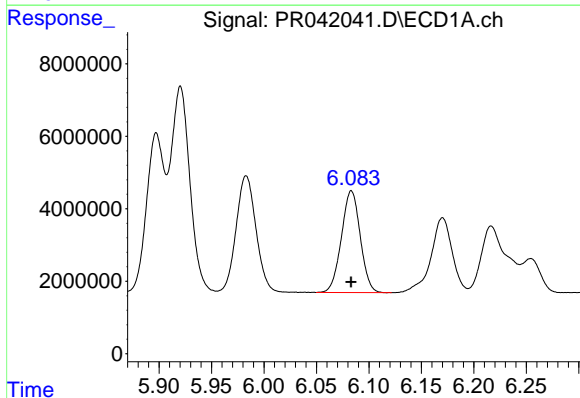
R.T.: 5.920 min  
Delta R.T.: 0.000 min  
Response: 72119752  
Conc: 802.09 ng/ml

Instrument :  
ECD\_R  
ClientSampleId :  
AR1242372



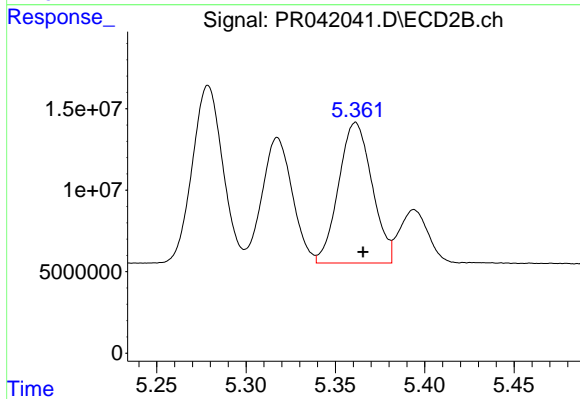
#13 AR-1232-3

R.T.: 5.279 min  
Delta R.T.: -0.004 min  
Response: 129056213  
Conc: 766.31 ng/ml



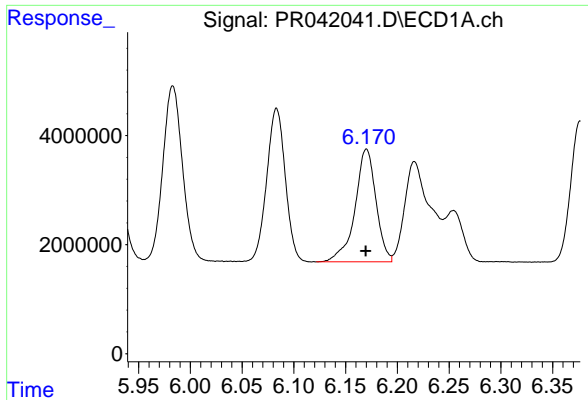
#14 AR-1232-4

R.T.: 6.083 min  
Delta R.T.: 0.000 min  
Response: 35128755  
Conc: 789.35 ng/ml



#14 AR-1232-4

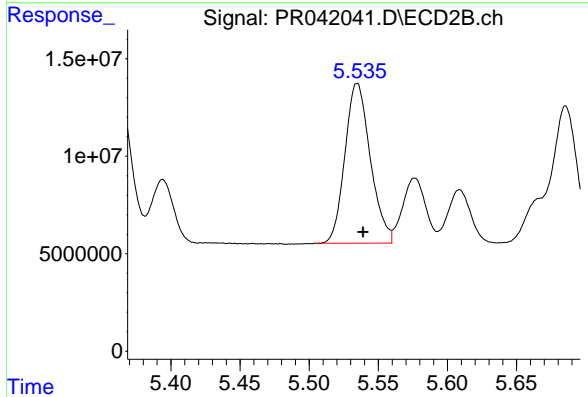
R.T.: 5.361 min  
Delta R.T.: -0.004 min  
Response: 112204854  
Conc: 787.74 ng/ml



#15 AR-1232-5

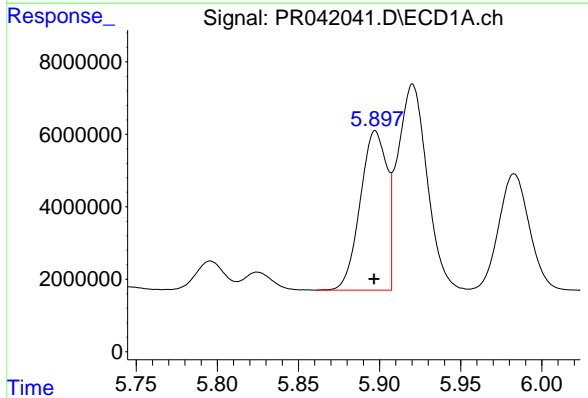
R.T.: 6.170 min  
 Delta R.T.: 0.000 min  
 Response: 29114809  
 Conc: 886.25 ng/ml

Instrument :  
 ECD\_R  
 ClientSampleId :  
 AR1242372



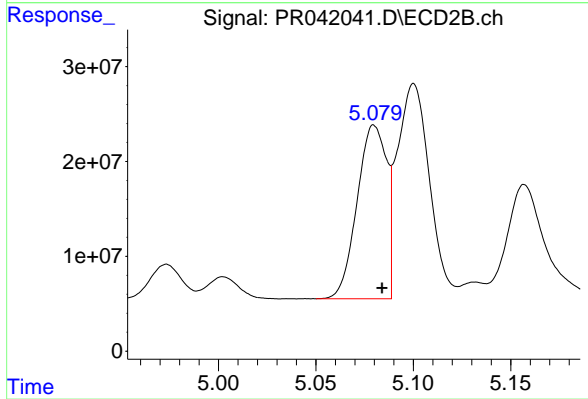
#15 AR-1232-5

R.T.: 5.535 min  
 Delta R.T.: -0.004 min  
 Response: 104893197  
 Conc: 778.42 ng/ml



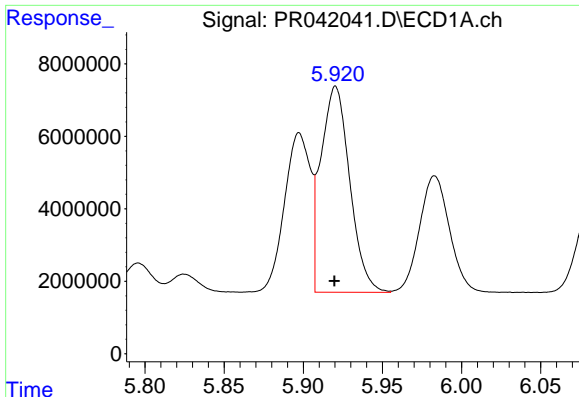
#16 AR-1242-1

R.T.: 5.897 min  
 Delta R.T.: 0.000 min  
 Response: 50300373  
 Conc: 456.13 ng/ml



#16 AR-1242-1

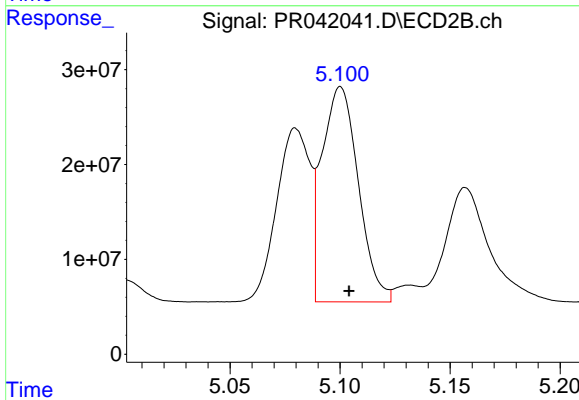
R.T.: 5.080 min  
 Delta R.T.: -0.004 min  
 Response: 192852007  
 Conc: 454.09 ng/ml



#17 AR-1242-2

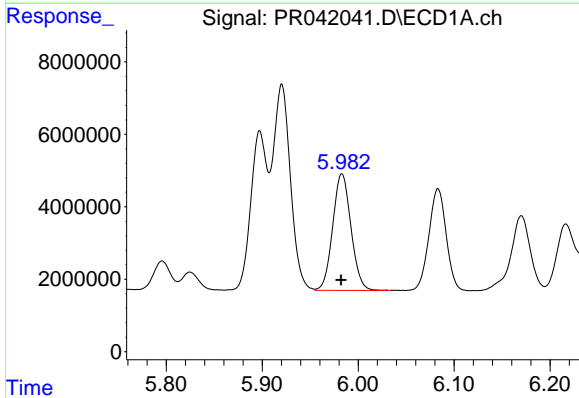
R.T.: 5.920 min  
 Delta R.T.: 0.000 min  
 Response: 72119752  
 Conc: 464.54 ng/ml

Instrument :  
 ECD\_R  
 ClientSampleId :  
 AR1242372



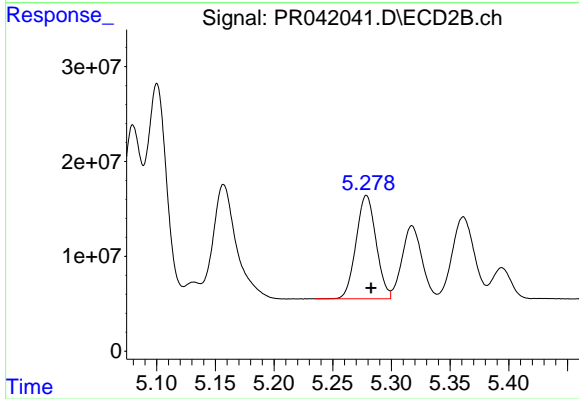
#17 AR-1242-2

R.T.: 5.100 min  
 Delta R.T.: -0.004 min  
 Response: 261346727  
 Conc: 459.22 ng/ml



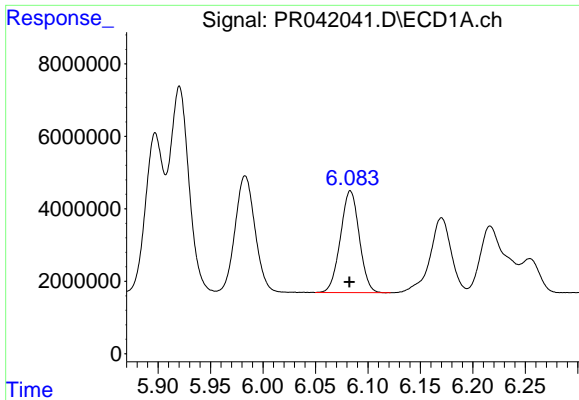
#18 AR-1242-3

R.T.: 5.983 min  
 Delta R.T.: 0.000 min  
 Response: 42542425  
 Conc: 453.40 ng/ml



#18 AR-1242-3

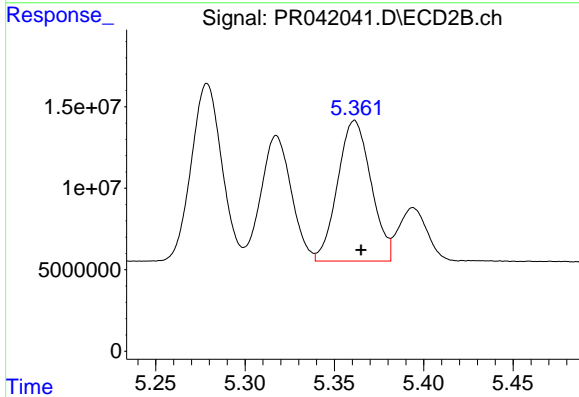
R.T.: 5.279 min  
 Delta R.T.: -0.004 min  
 Response: 129056213  
 Conc: 447.17 ng/ml



#19 AR-1242-4

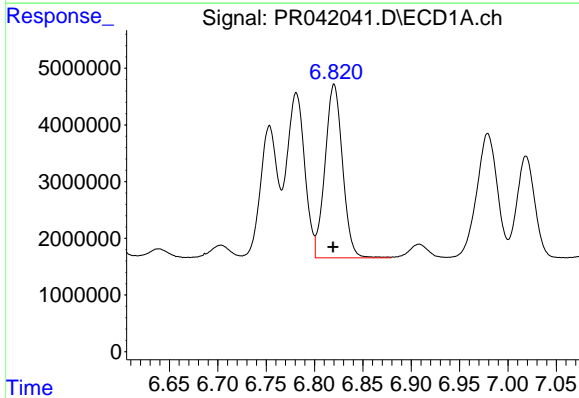
R.T.: 6.083 min  
Delta R.T.: 0.000 min  
Response: 35128755  
Conc: 452.18 ng/ml

Instrument :  
ECD\_R  
ClientSampleId :  
AR1242372



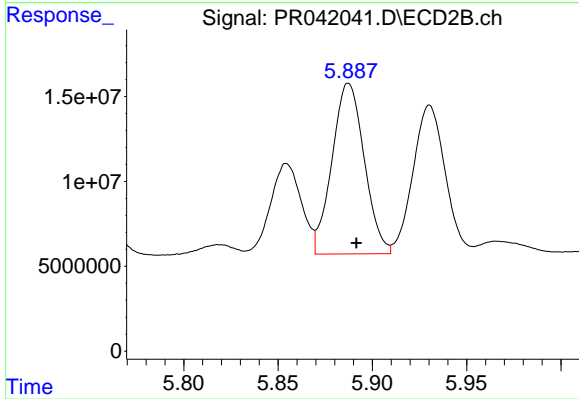
#19 AR-1242-4

R.T.: 5.361 min  
Delta R.T.: -0.004 min  
Response: 112204854  
Conc: 431.03 ng/ml



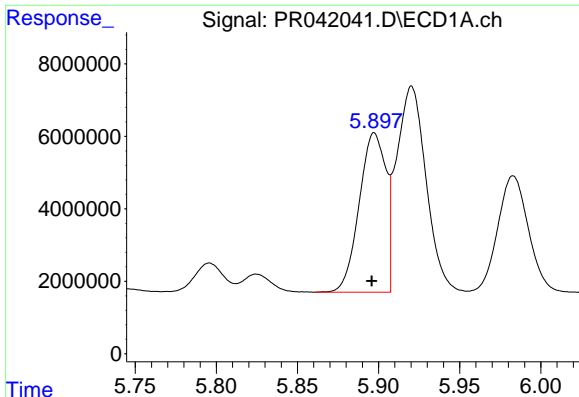
#20 AR-1242-5

R.T.: 6.820 min  
Delta R.T.: 0.000 min  
Response: 38595525  
Conc: 440.95 ng/ml



#20 AR-1242-5

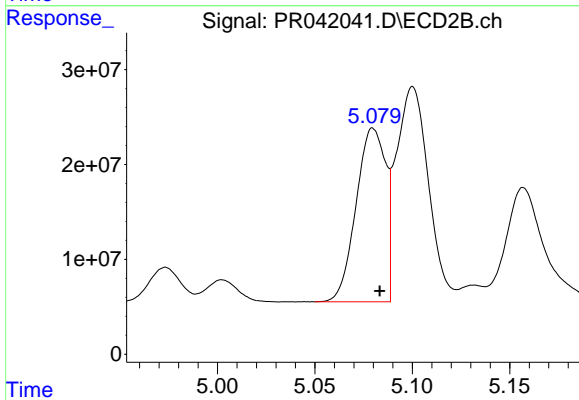
R.T.: 5.887 min  
Delta R.T.: -0.004 min  
Response: 119625108  
Conc: 450.92 ng/ml



#21 AR-1248-1

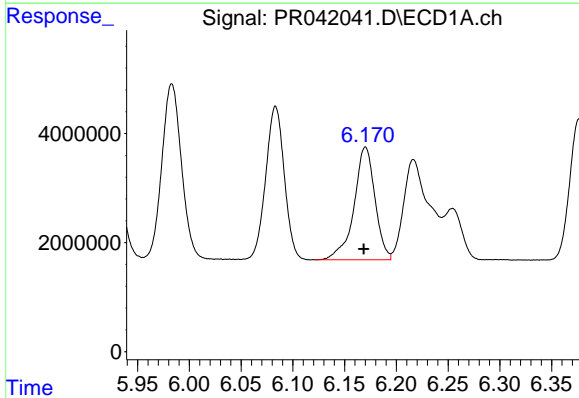
R.T.: 5.897 min  
 Delta R.T.: 0.002 min  
 Response: 50300373  
 Conc: 604.48 ng/ml

Instrument :  
 ECD\_R  
 ClientSampled :  
 AR1242372



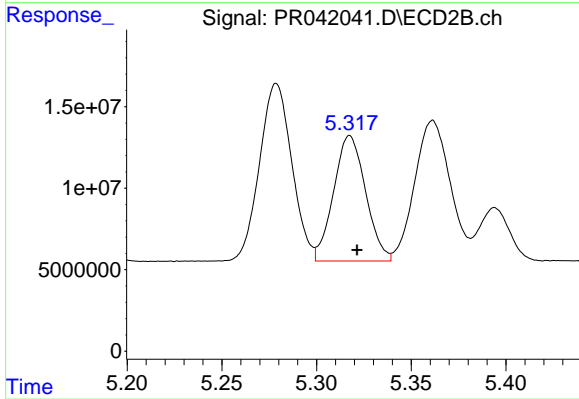
#21 AR-1248-1

R.T.: 5.080 min  
 Delta R.T.: -0.003 min  
 Response: 192852007  
 Conc: 591.68 ng/ml



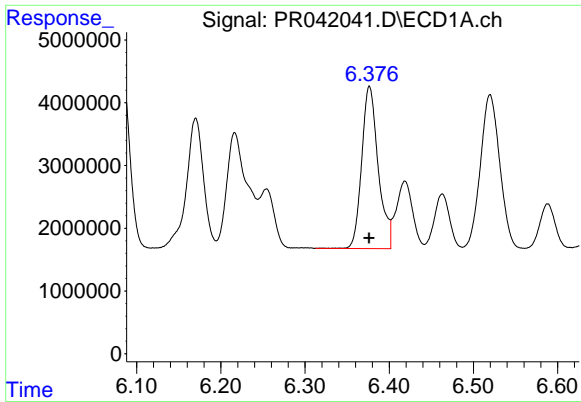
#22 AR-1248-2

R.T.: 6.170 min  
 Delta R.T.: 0.002 min  
 Response: 29114809  
 Conc: 253.71 ng/ml



#22 AR-1248-2

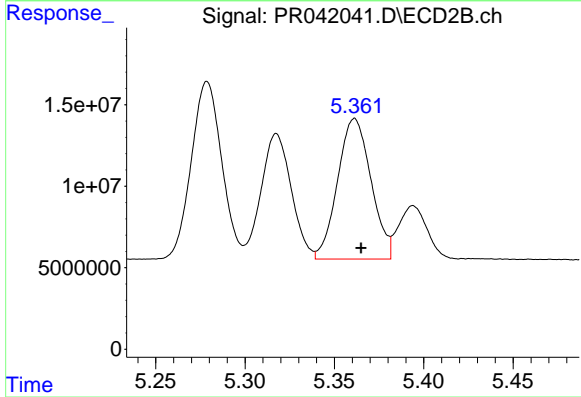
R.T.: 5.317 min  
 Delta R.T.: -0.004 min  
 Response: 90522255  
 Conc: 243.03 ng/ml



#23 AR-1248-3

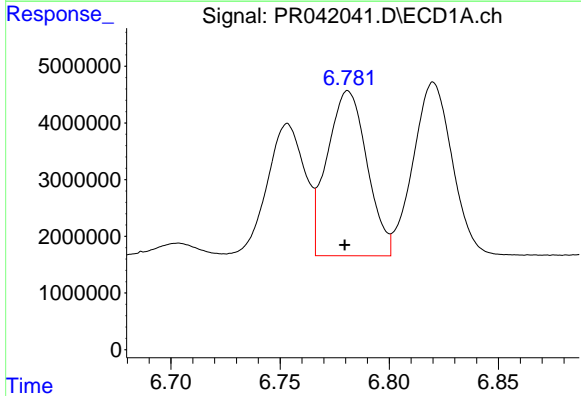
R.T.: 6.377 min  
 Delta R.T.: 0.000 min  
 Response: 35216911  
 Conc: 271.62 ng/ml

Instrument :  
 ECD\_R  
 ClientSampleId :  
 AR1242372



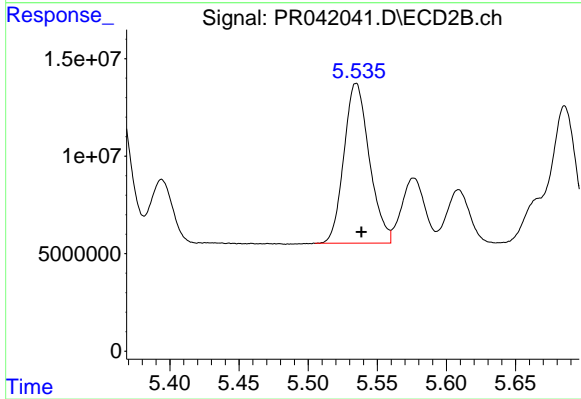
#23 AR-1248-3

R.T.: 5.361 min  
 Delta R.T.: -0.004 min  
 Response: 112204854  
 Conc: 299.76 ng/ml



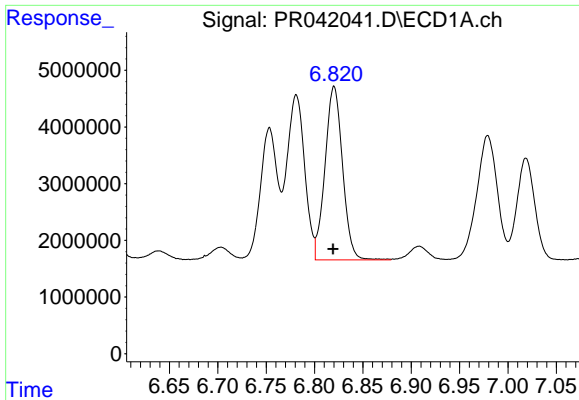
#24 AR-1248-4

R.T.: 6.781 min  
 Delta R.T.: 0.001 min  
 Response: 37024815  
 Conc: 241.29 ng/ml



#24 AR-1248-4

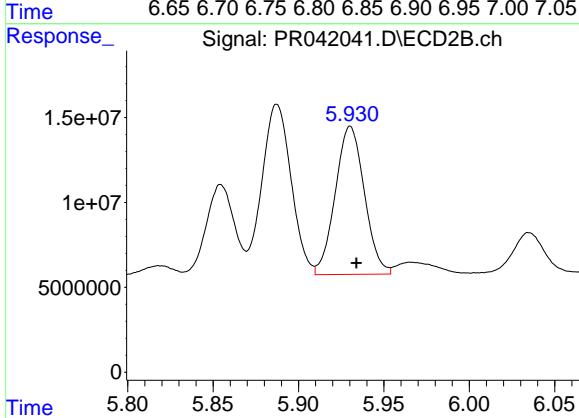
R.T.: 5.535 min  
 Delta R.T.: -0.004 min  
 Response: 104893197  
 Conc: 263.37 ng/ml



#25 AR-1248-5

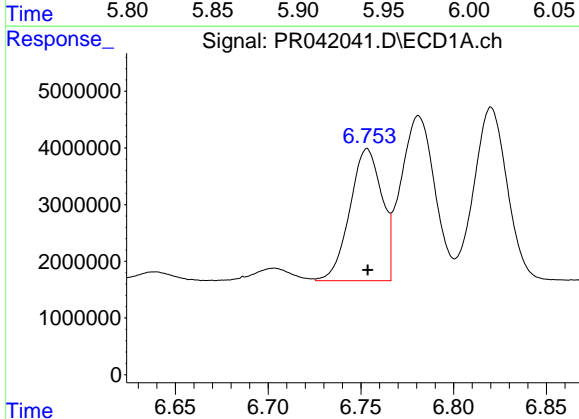
R.T.: 6.820 min  
 Delta R.T.: 0.001 min  
 Response: 38595525  
 Conc: 266.56 ng/ml

Instrument :  
 ECD\_R  
 ClientSampleId :  
 AR1242372



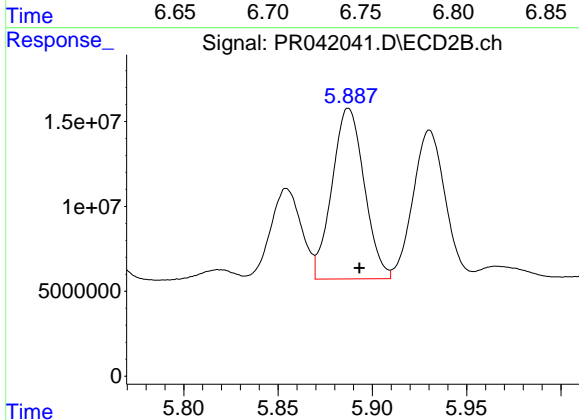
#25 AR-1248-5

R.T.: 5.930 min  
 Delta R.T.: -0.004 min  
 Response: 103437793  
 Conc: 296.16 ng/ml



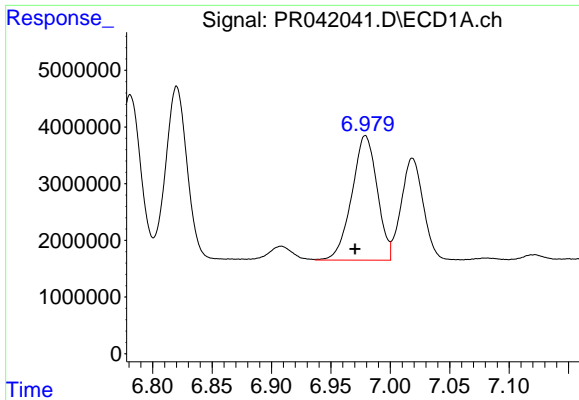
#26 AR-1254-1

R.T.: 6.753 min  
 Delta R.T.: 0.000 min  
 Response: 27964380  
 Conc: 171.23 ng/ml



#26 AR-1254-1

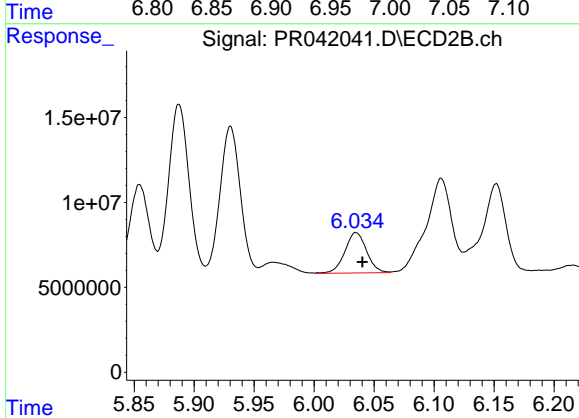
R.T.: 5.887 min  
 Delta R.T.: -0.006 min  
 Response: 119625108  
 Conc: 225.82 ng/ml



#27 AR-1254-2

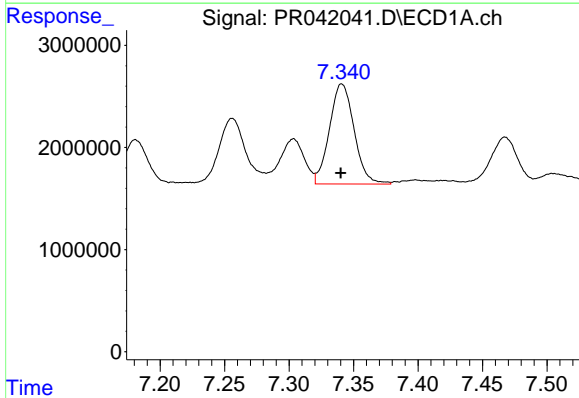
R.T.: 6.979 min  
 Delta R.T.: 0.009 min  
 Response: 32634308  
 Conc: 131.54 ng/ml

Instrument :  
 ECD\_R  
 ClientSampled :  
 AR1242372



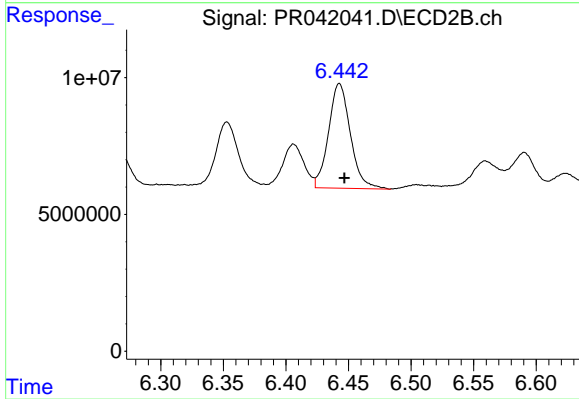
#27 AR-1254-2

R.T.: 6.035 min  
 Delta R.T.: -0.005 min  
 Response: 30176905  
 Conc: 60.19 ng/ml



#28 AR-1254-3

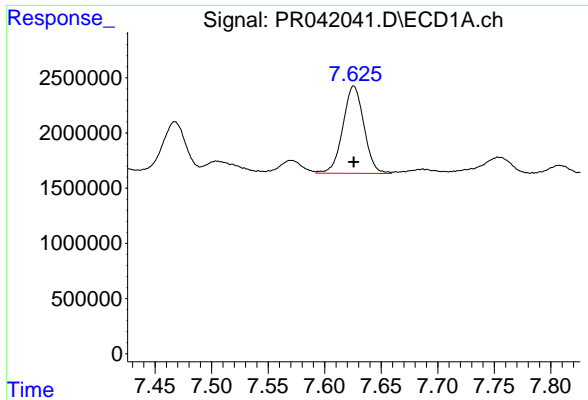
R.T.: 7.341 min  
 Delta R.T.: 0.000 min  
 Response: 13071456  
 Conc: 48.44 ng/ml



#28 AR-1254-3

R.T.: 6.443 min  
 Delta R.T.: -0.004 min  
 Response: 46480756  
 Conc: 49.27 ng/ml

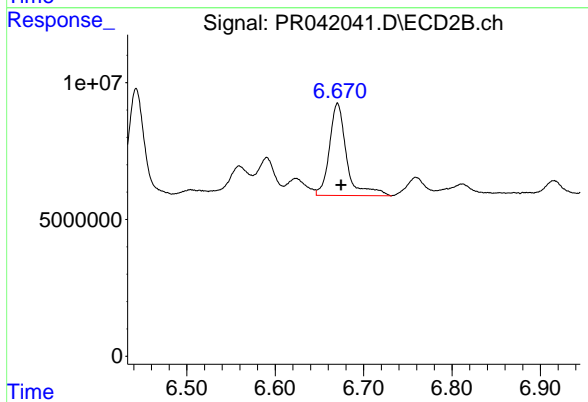




#29 AR-1254-4

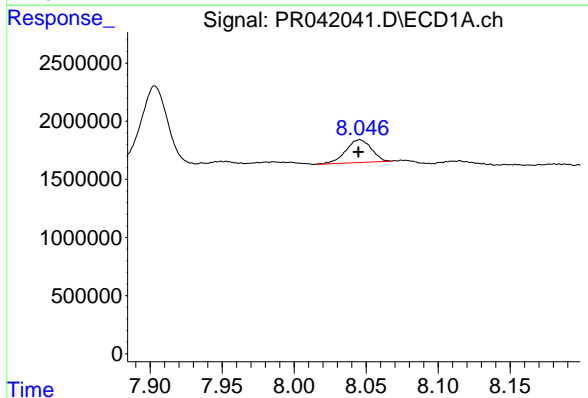
R.T.: 7.626 min  
 Delta R.T.: 0.000 min  
 Response: 10261249  
 Conc: 50.56 ng/ml

Instrument :  
 ECD\_R  
 ClientSampleId :  
 AR1242372



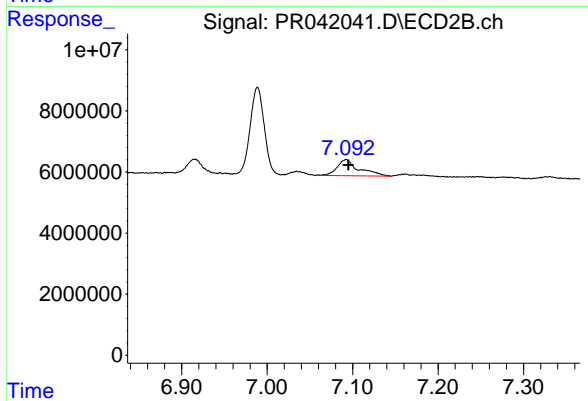
#29 AR-1254-4

R.T.: 6.671 min  
 Delta R.T.: -0.004 min  
 Response: 45526663  
 Conc: 68.76 ng/ml



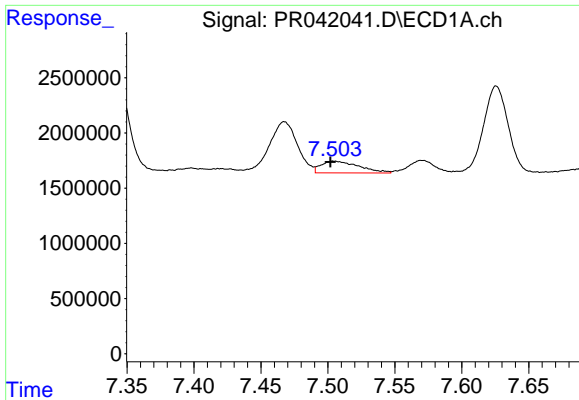
#30 AR-1254-5

R.T.: 8.045 min  
 Delta R.T.: 0.000 min  
 Response: 2415695  
 Conc: 11.36 ng/ml



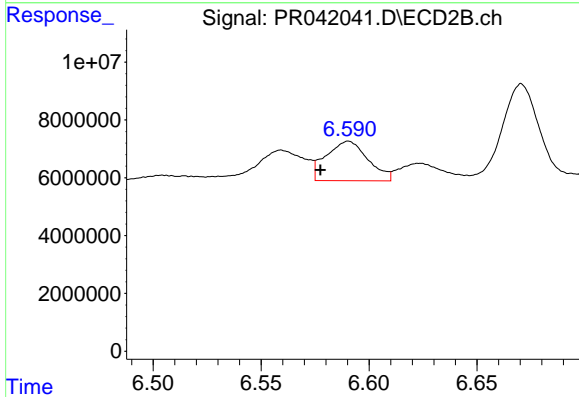
#30 AR-1254-5

R.T.: 7.092 min  
 Delta R.T.: -0.003 min  
 Response: 9365000  
 Conc: 10.91 ng/ml

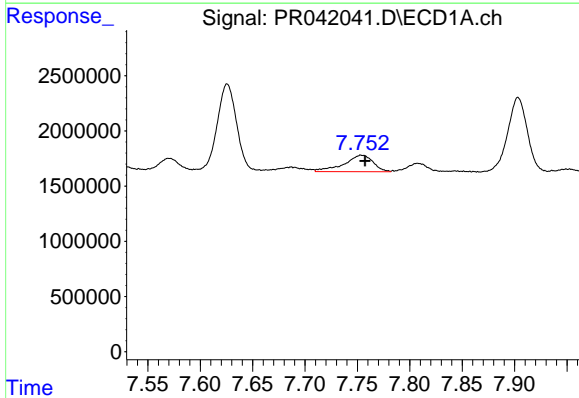


#31 AR-1260-1  
 R.T.: 7.504 min  
 Delta R.T.: 0.003 min  
 Response: 2120718  
 Conc: 11.19 ng/ml

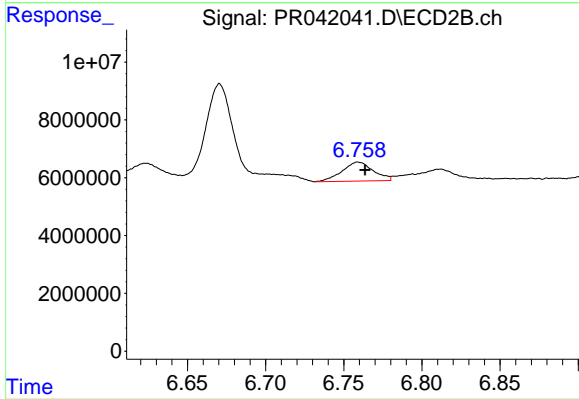
Instrument :  
 ECD\_R  
 ClientSampleId :  
 AR1242372



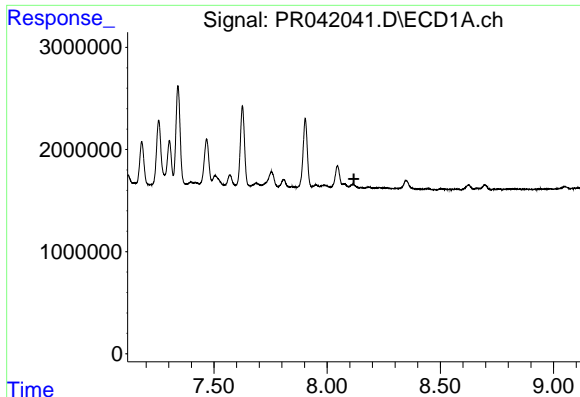
#31 AR-1260-1  
 R.T.: 6.590 min  
 Delta R.T.: 0.013 min  
 Response: 18440995  
 Conc: 31.11 ng/ml



#32 AR-1260-2  
 R.T.: 7.754 min  
 Delta R.T.: -0.003 min  
 Response: 2876783  
 Conc: 12.17 ng/ml



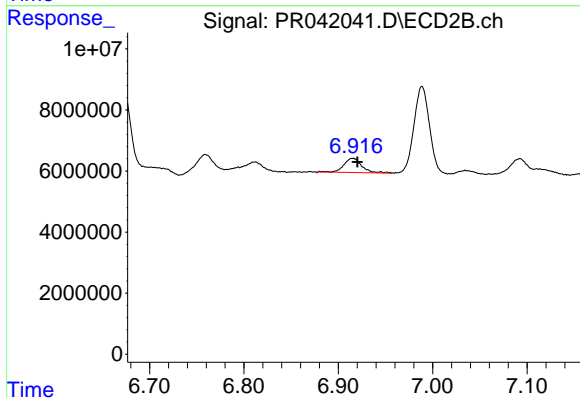
#32 AR-1260-2  
 R.T.: 6.759 min  
 Delta R.T.: -0.004 min  
 Response: 9124240  
 Conc: 11.19 ng/ml



#33 AR-1260-3

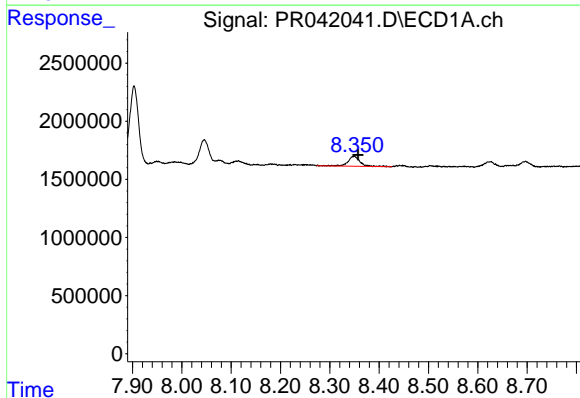
R.T.: 0.000 min  
 Exp R.T.: 8.118 min  
 Response: 0  
 Conc: N.D.

Instrument :  
 ECD\_R  
 ClientSampleId :  
 AR1242372



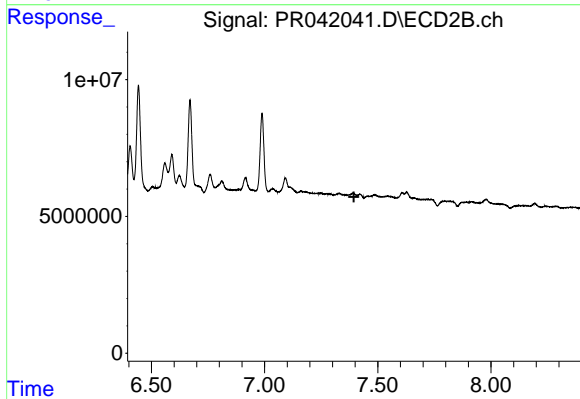
#33 AR-1260-3

R.T.: 6.915 min  
 Delta R.T.: -0.005 min  
 Response: 6063948  
 Conc: 8.77 ng/ml



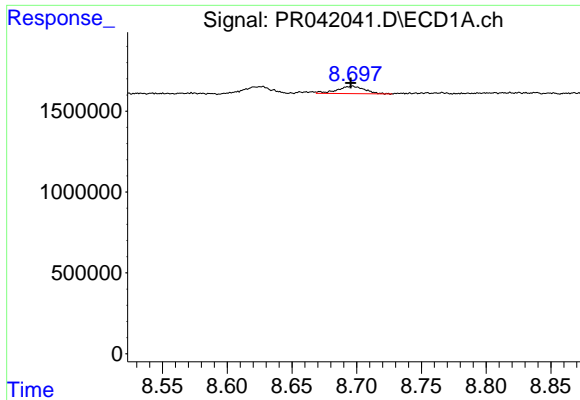
#34 AR-1260-4

R.T.: 8.350 min  
 Delta R.T.: -0.008 min  
 Response: 1465383  
 Conc: 7.29 ng/ml



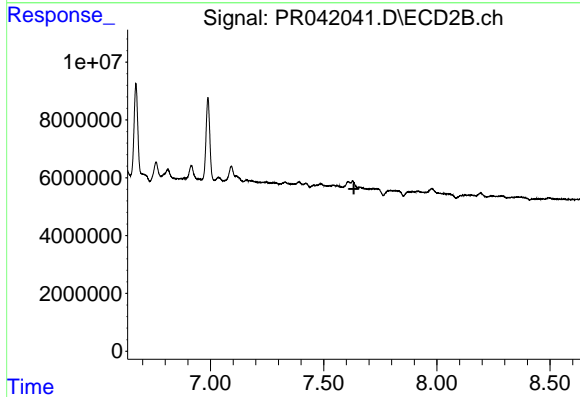
#34 AR-1260-4

R.T.: 0.000 min  
 Exp R.T.: 7.394 min  
 Response: 0  
 Conc: N.D.

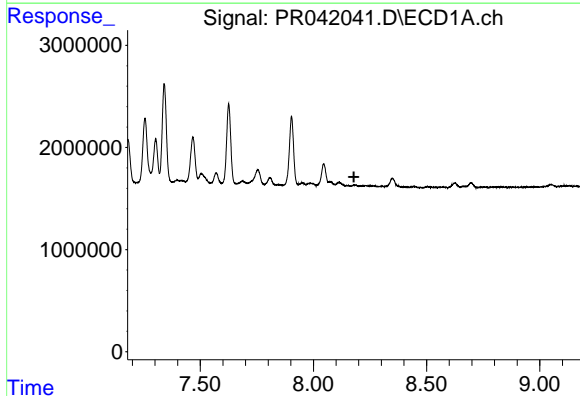


#35 AR-1260-5  
 R.T.: 8.697 min  
 Delta R.T.: 0.001 min  
 Response: 674441  
 Conc: 1.56 ng/ml

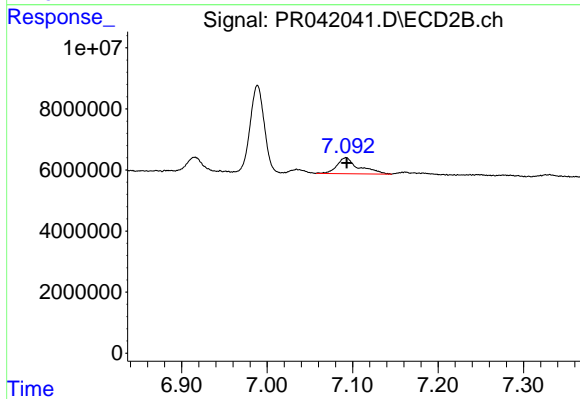
Instrument :  
 ECD\_R  
 ClientSampleId :  
 AR1242372



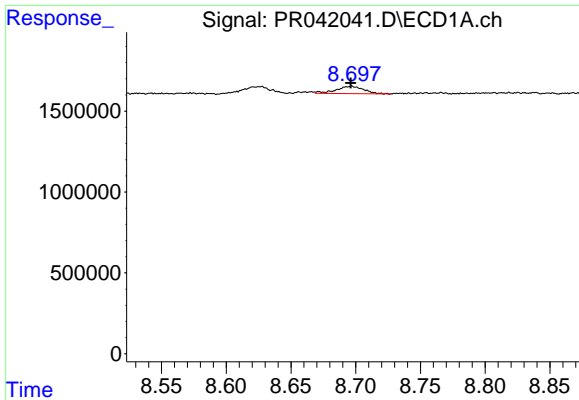
#35 AR-1260-5  
 R.T.: 0.000 min  
 Exp R.T. : 7.633 min  
 Response: 0  
 Conc: N.D.



#36 AR-1262-1  
 R.T.: 0.000 min  
 Exp R.T. : 8.179 min  
 Response: 0  
 Conc: N.D.



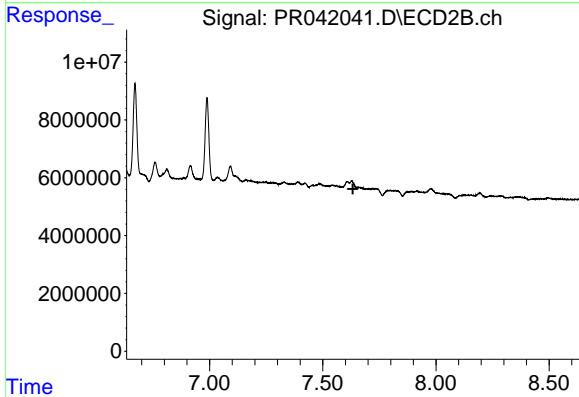
#36 AR-1262-1  
 R.T.: 7.092 min  
 Delta R.T.: 0.000 min  
 Response: 9365000  
 Conc: 21.49 ng/ml



#37 AR-1262-2

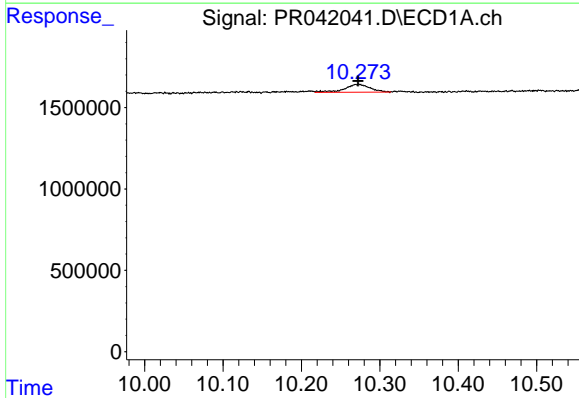
R.T.: 8.697 min  
 Delta R.T.: 0.000 min  
 Response: 674441  
 Conc: 1.56 ng/ml

Instrument :  
 ECD\_R  
 ClientSampleId :  
 AR1242372



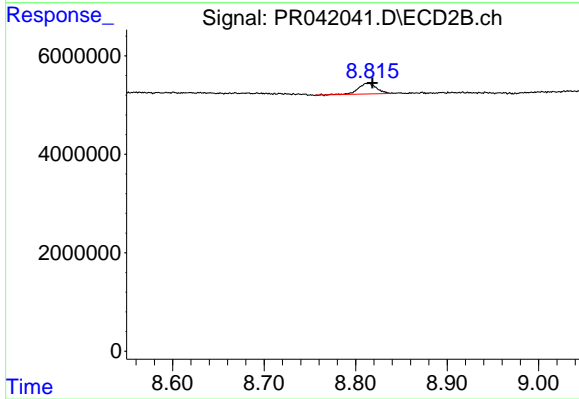
#37 AR-1262-2

R.T.: 0.000 min  
 Exp R.T. : 7.633 min  
 Response: 0  
 Conc: N.D.



#45 AR-1268-5

R.T.: 10.273 min  
 Delta R.T.: 0.001 min  
 Response: 1081076  
 Conc: 0.83 ng/ml



#45 AR-1268-5

R.T.: 8.813 min  
 Delta R.T.: -0.005 min  
 Response: 3013047  
 Conc: 0.66 ng/ml