

Data Path : Z:\pestpcbsrv\HPCHEM1\ECD\_R\Data\PR100819\  
 Data File : PR042089.D  
 Signal(s) : Signal #1: ECD1A.ch Signal #2: ECD2B.ch  
 Acq On : 08 Oct 2019 17:45  
 Operator : SM\AJ  
 Sample : K5178-22  
 Misc :  
 ALS Vial : 12 Sample Multiplier: 1

Instrument :  
 ECD\_R  
 ClientSampled :

Integration File signal 1: autoint1.e  
 Integration File signal 2: autoint2.e  
 Quant Time: Oct 09 05:45:24 2019  
 Quant Method : Z:\pestpcbsrv\HPCHEM1\ECD\_R\Method\PR100319CLP.M  
 Quant Title : GC EXTRACTABLES  
 QLast Update : Fri Oct 04 06:59:35 2019  
 Response via : Initial Calibration  
 Integrator: ChemStation

Volume Inj. : 1 µl  
 Signal #1 Phase : ZB MR1 Signal #2 Phase: ZB MR2  
 Signal #1 Info : 30Mx0.32mmx 0.5µm Signal #2 Info : 30M x 0.32mm x 0.25µm

Compound	RT#1	RT#2	Resp#1	Resp#2	ng/ml	ng/ml
-----						
System Monitoring Compounds						
1) SA Tetrachlo...	4.719	3.983	39062012	156.6E6	9.602	10.241
2) SA Decachlor...	10.636	9.095	48468312	139.7E6	14.105	14.095
Target Compounds						
3) L1 AR-1016-1	5.895	5.079	24446601	67706463	170.277	124.553 #
4) L1 AR-1016-2	5.918	5.100	30845293	68584328	150.835	95.022 #
5) L1 AR-1016-3	5.986	5.279	15000871	33399096	123.389	91.593 #
6) L1 AR-1016-4	6.081	5.318	15838142	80086941	155.733	288.591 #
7) L1 AR-1016-5	6.375	5.535	28339783	46842548	284.619	151.490 #
8) L2 AR-1221-1	4.908	4.183	1090564	8455959	26.563	50.053 #
9) L2 AR-1221-2	5.020	4.284	3564115	12152283	122.844	98.881
10) L2 AR-1221-3	5.094	4.360	3288041	11766271	33.795	30.209
11) L3 AR-1232-1	5.094	4.360	3288041	11766271	39.294	34.533
12) L3 AR-1232-2	5.627	5.100	18127515	68584328	420.799	201.407 #
13) L3 AR-1232-3	5.918	5.279	30845293	33399096	343.048	198.317 #
14) L3 AR-1232-4	6.081	5.360	15838142	63672059	355.884	447.013 #
15) L3 AR-1232-5	6.169	5.535	31355333	46842548	954.453	347.623 #
16) L4 AR-1242-1	5.895	5.079	24446601	67706463	221.687	159.422 #
17) L4 AR-1242-2	5.918	5.100	30845293	68584328	198.681	120.512 #
18) L4 AR-1242-3	5.986	5.279	15000871	33399096	159.875	115.725 #
19) L4 AR-1242-4	6.081	5.360	15838142	63672059	203.870	244.591
20) L4 AR-1242-5	6.819	5.889	25542923	83978943	291.825	316.551
21) L5 AR-1248-1	5.895	5.079	24446601	67706463	293.786	207.727 #
22) L5 AR-1248-2	6.169	5.318	31355333	80086941	273.239	215.015
23) L5 AR-1248-3	6.375	5.360	28339783	63672059	218.575	170.101
24) L5 AR-1248-4	6.780	5.535	17365770	46842548	113.172	117.613
25) L5 AR-1248-5	6.819	5.931	25542923	40054873	176.414	114.684 #
26) L6 AR-1254-1	6.752	5.889	25941507	83978943	158.846	158.530
27) L6 AR-1254-2	6.970	6.037	41823155	71866919	168.574	143.345
28) L6 AR-1254-3	7.340	6.443	38821844	167.4E6	143.858	177.480
29) L6 AR-1254-4	7.625	6.671	35040600	118.3E6	172.651	178.606
30) L6 AR-1254-5	8.044	7.091	41372387	124.6E6	194.553	145.098 #
31) L7 AR-1260-1	7.501	6.576	24415502	61153753	128.865	103.166
32) L7 AR-1260-2	7.756	6.760	34090174	103.5E6	144.229	126.914
33) L7 AR-1260-3	8.118	6.917	14126057	72984875	75.247	105.575 #
34) L7 AR-1260-4	8.351	7.390	25991358	30178188	129.332	52.005 #
35) L7 AR-1260-5	8.696	7.629	22088393	106.6E6	51.026	65.576 #
36) L8 AR-1262-1	8.179	7.091	13584044	124.6E6	144.311	285.895 #
37) L8 AR-1262-2	8.696	7.629	22088393	106.6E6	51.209	61.933
38) L8 AR-1262-3	9.046	7.916	23780901	34117302	85.314	52.269 #
39) L8 AR-1262-4	9.125	7.981	16076623	57154166	78.473	48.910 #
40) L8 AR-1262-5	9.829	8.496	7881931	28009525	54.641	52.363
41) L9 AR-1268-1	9.046	7.916	23780901	34117302	43.297	15.560 #

Data Path : Z:\pestpcbsrv\HPCHEM1\ECD\_R\Data\PR100819\  
 Data File : PR042089.D  
 Signal(s) : Signal #1: ECD1A.ch Signal #2: ECD2B.ch  
 Acq On : 08 Oct 2019 17:45  
 Operator : SM\AJ  
 Sample : K5178-22  
 Misc :  
 ALS Vial : 12 Sample Multiplier: 1

Instrument :  
 ECD\_R  
 ClientSampleId :

Integration File signal 1: autoint1.e  
 Integration File signal 2: autoint2.e  
 Quant Time: Oct 09 05:45:24 2019  
 Quant Method : Z:\pestpcbsrv\HPCHEM1\ECD\_R\Method\PR100319CLP.M  
 Quant Title : GC EXTRACTABLES  
 QLast Update : Fri Oct 04 06:59:35 2019  
 Response via : Initial Calibration  
 Integrator: ChemStation

Volume Inj. : 1 µl  
 Signal #1 Phase : ZB MR1 Signal #2 Phase: ZB MR2  
 Signal #1 Info : 30Mx0.32mmx 0.5µm Signal #2 Info : 30M x 0.32mm x 0.25µm

	Compound	RT#1	RT#2	Resp#1	Resp#2	ng/ml	ng/ml
42)	L9 AR-1268-2	9.125	7.981	16076623	57154166	32.336	28.723
43)	L9 AR-1268-3	9.370	8.196	5603068	49359632	13.737	29.453 #
44)	L9 AR-1268-4	9.829	8.496	7881931	28009525	44.925	43.402
45)	L9 AR-1268-5	10.273	8.814	8814132	27299647	6.764	5.949

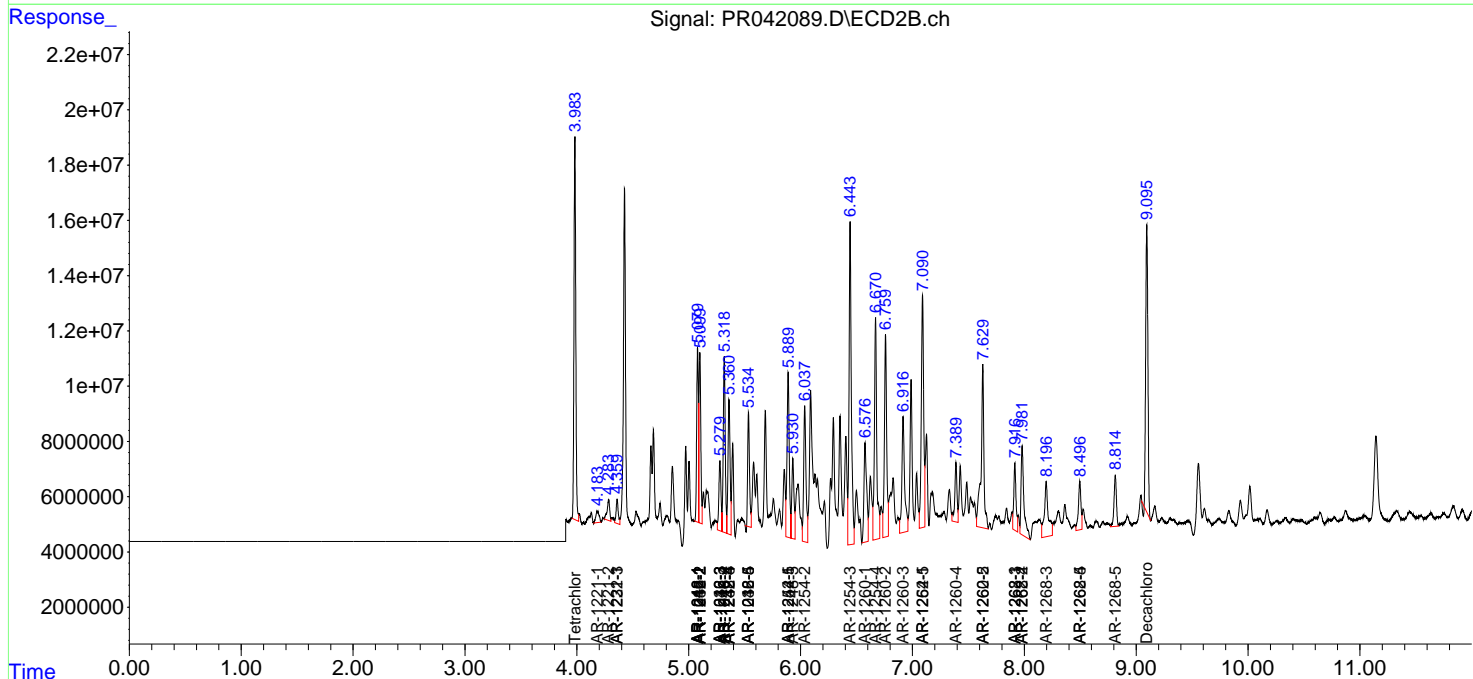
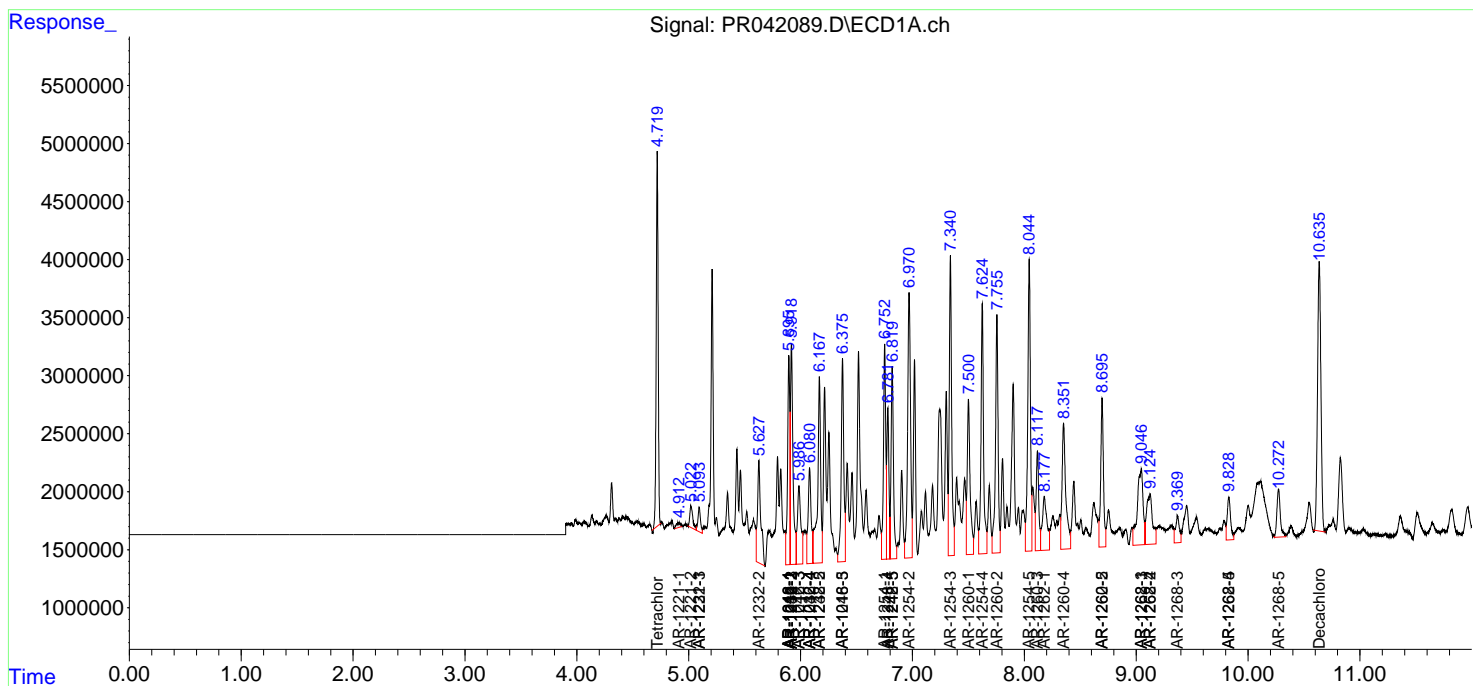
(f)=RT Delta > 1/2 Window (#)=Amounts differ by > 25% (m)=manual int.

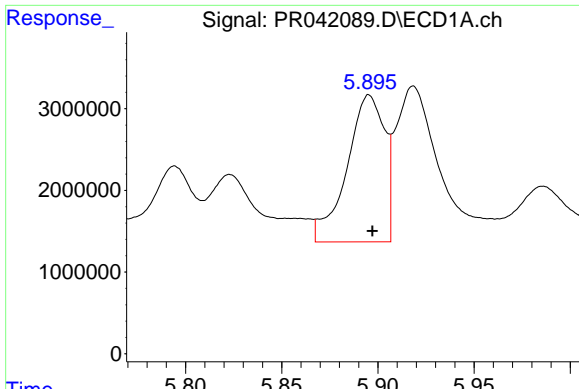
Data Path : Z:\pestpcbsrv\HPCHEM1\ECD\_R\Data\PR100819\  
 Data File : PR042089.D  
 Signal(s) : Signal #1: ECD1A.ch Signal #2: ECD2B.ch  
 Acq On : 08 Oct 2019 17:45  
 Operator : SM\AJ  
 Sample : K5178-22  
 Misc :  
 ALS Vial : 12 Sample Multiplier: 1

Instrument :  
 ECD\_R  
 ClientSampled :

Integration File signal 1: autoint1.e  
 Integration File signal 2: autoint2.e  
 Quant Time: Oct 09 05:45:24 2019  
 Quant Method : Z:\pestpcbsrv\HPCHEM1\ECD\_R\Method\PR100319CLP.M  
 Quant Title : GC EXTRACTABLES  
 QLast Update : Fri Oct 04 06:59:35 2019  
 Response via : Initial Calibration  
 Integrator: ChemStation

Volume Inj. : 1 µl  
 Signal #1 Phase : ZB MR1 Signal #2 Phase: ZB MR2  
 Signal #1 Info : 30Mx0.32mmx 0.5µm Signal #2 Info : 30M x 0.32mm x 0.25µm

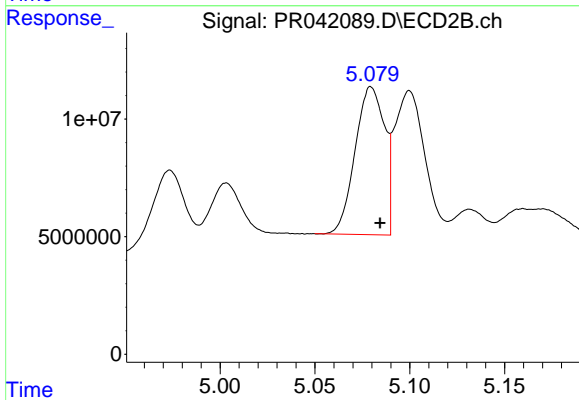




#3 AR-1016-1

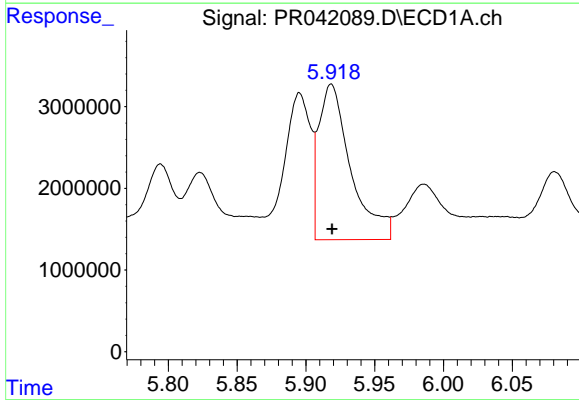
R.T.: 5.895 min  
 Delta R.T.: -0.002 min  
 Response: 24446601  
 Conc: 170.28 ng/ml

Instrument :  
 ECD\_R  
 ClientSampleId :



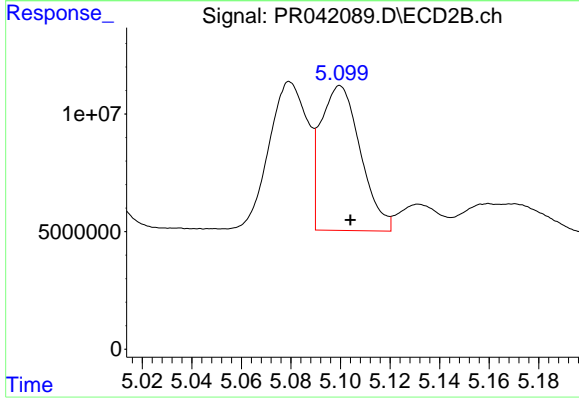
#3 AR-1016-1

R.T.: 5.079 min  
 Delta R.T.: -0.005 min  
 Response: 67706463  
 Conc: 124.55 ng/ml



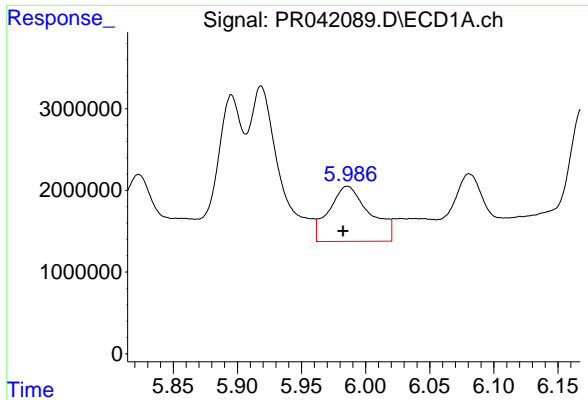
#4 AR-1016-2

R.T.: 5.918 min  
 Delta R.T.: 0.000 min  
 Response: 30845293  
 Conc: 150.84 ng/ml



#4 AR-1016-2

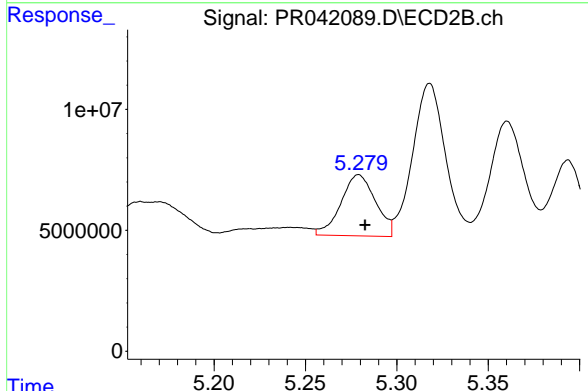
R.T.: 5.100 min  
 Delta R.T.: -0.004 min  
 Response: 68584328  
 Conc: 95.02 ng/ml



#5 AR-1016-3

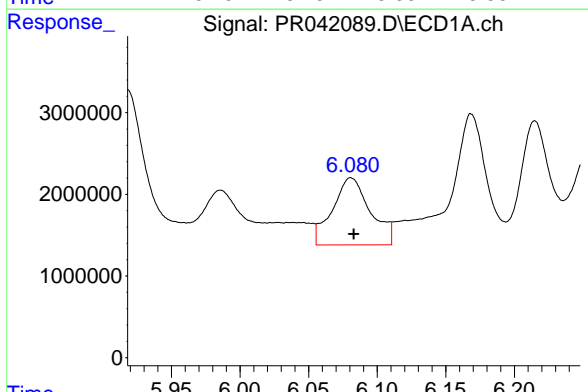
R.T.: 5.986 min  
 Delta R.T.: 0.003 min  
 Response: 15000871  
 Conc: 123.39 ng/ml

Instrument :  
 ECD\_R  
 ClientSampleId :



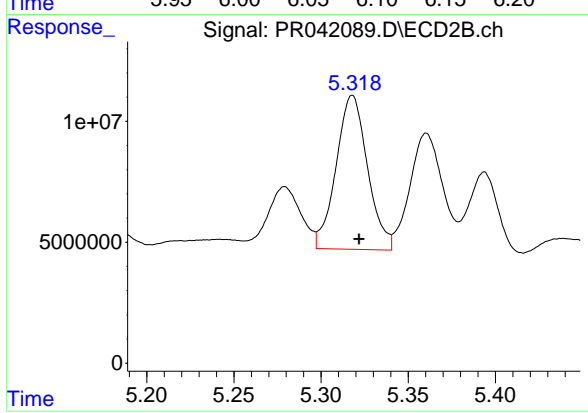
#5 AR-1016-3

R.T.: 5.279 min  
 Delta R.T.: -0.004 min  
 Response: 33399096  
 Conc: 91.59 ng/ml



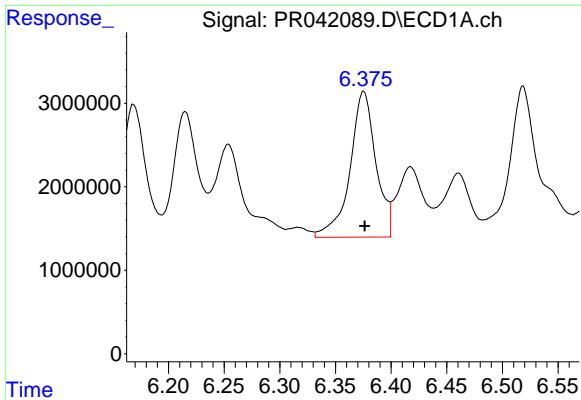
#6 AR-1016-4

R.T.: 6.081 min  
 Delta R.T.: -0.002 min  
 Response: 15838142  
 Conc: 155.73 ng/ml



#6 AR-1016-4

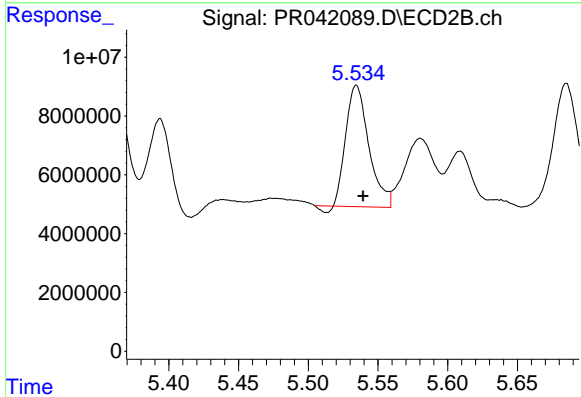
R.T.: 5.318 min  
 Delta R.T.: -0.004 min  
 Response: 80086941  
 Conc: 288.59 ng/ml



#7 AR-1016-5

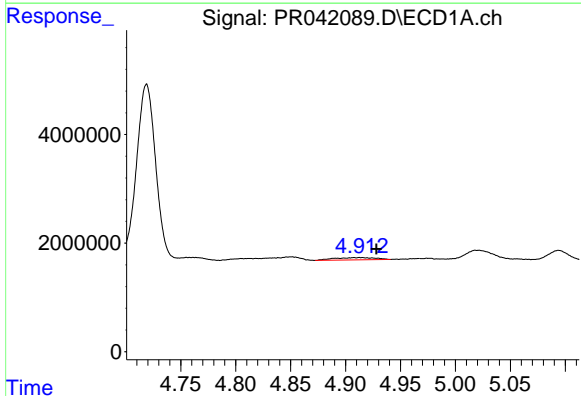
R.T.: 6.375 min  
Delta R.T.: -0.001 min  
Response: 28339783  
Conc: 284.62 ng/ml

Instrument :  
ECD\_R  
ClientSampleId :



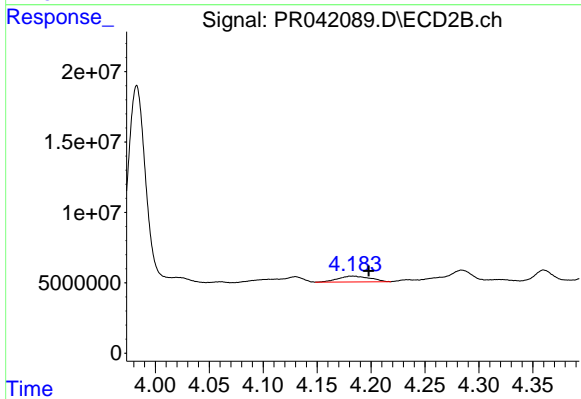
#7 AR-1016-5

R.T.: 5.535 min  
Delta R.T.: -0.005 min  
Response: 46842548  
Conc: 151.49 ng/ml



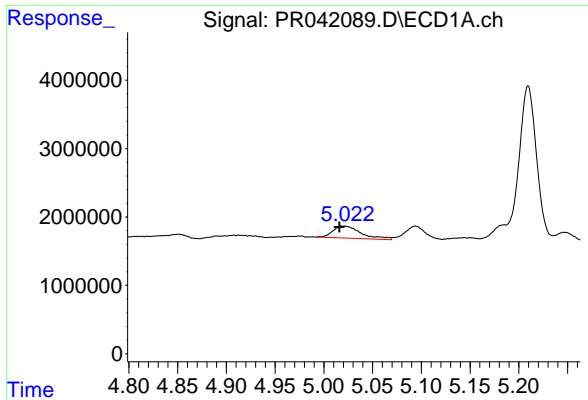
#8 AR-1221-1

R.T.: 4.908 min  
Delta R.T.: -0.020 min  
Response: 1090564  
Conc: 26.56 ng/ml



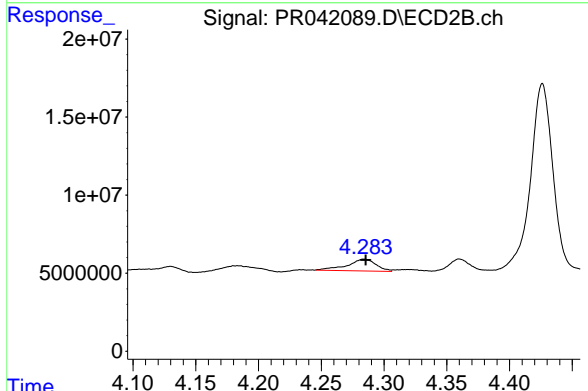
#8 AR-1221-1

R.T.: 4.183 min  
Delta R.T.: -0.015 min  
Response: 8455959  
Conc: 50.05 ng/ml

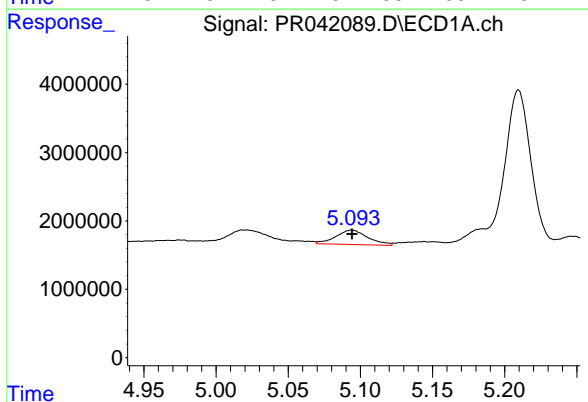


#9 AR-1221-2  
 R.T.: 5.020 min  
 Delta R.T.: 0.004 min  
 Response: 3564115  
 Conc: 122.84 ng/ml

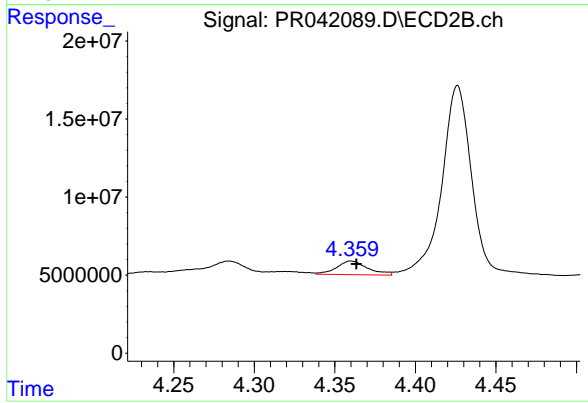
Instrument :  
 ECD\_R  
 ClientSampled :



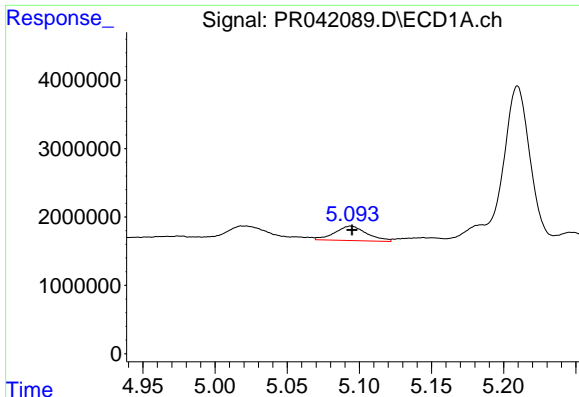
#9 AR-1221-2  
 R.T.: 4.284 min  
 Delta R.T.: -0.002 min  
 Response: 12152283  
 Conc: 98.88 ng/ml



#10 AR-1221-3  
 R.T.: 5.094 min  
 Delta R.T.: 0.000 min  
 Response: 3288041  
 Conc: 33.80 ng/ml



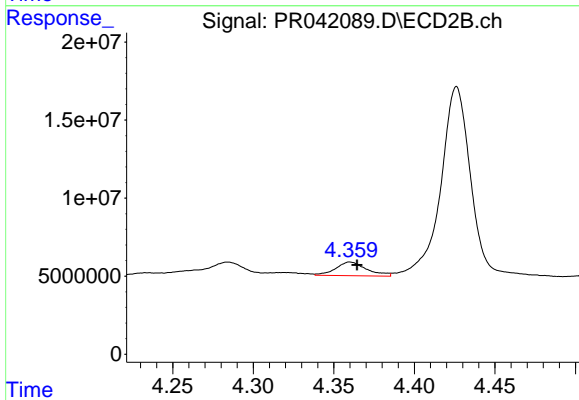
#10 AR-1221-3  
 R.T.: 4.360 min  
 Delta R.T.: -0.003 min  
 Response: 11766271  
 Conc: 30.21 ng/ml



#11 AR-1232-1

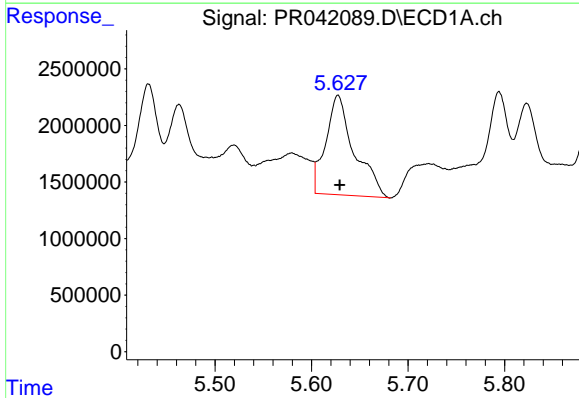
R.T.: 5.094 min  
 Delta R.T.: 0.000 min  
 Response: 3288041  
 Conc: 39.29 ng/ml

Instrument :  
 ECD\_R  
 ClientSampled :



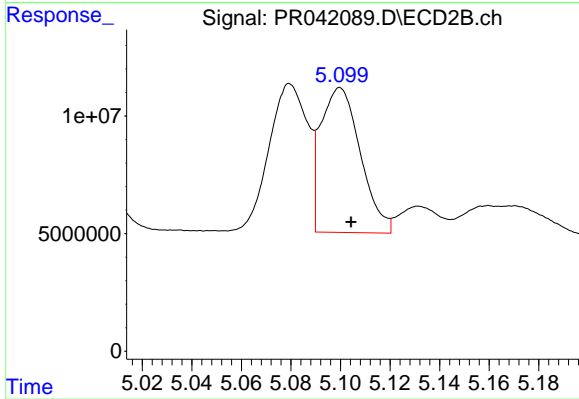
#11 AR-1232-1

R.T.: 4.360 min  
 Delta R.T.: -0.005 min  
 Response: 11766271  
 Conc: 34.53 ng/ml



#12 AR-1232-2

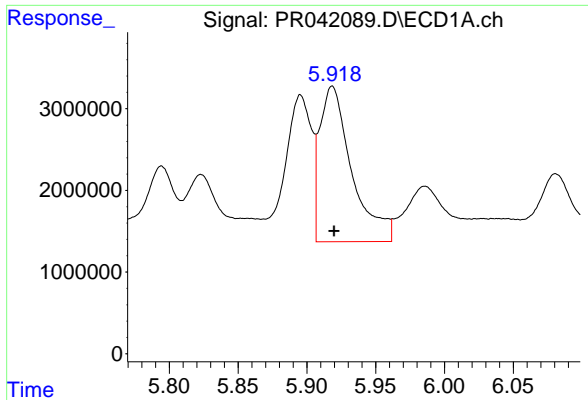
R.T.: 5.627 min  
 Delta R.T.: -0.002 min  
 Response: 18127515  
 Conc: 420.80 ng/ml



#12 AR-1232-2

R.T.: 5.100 min  
 Delta R.T.: -0.004 min  
 Response: 68584328  
 Conc: 201.41 ng/ml

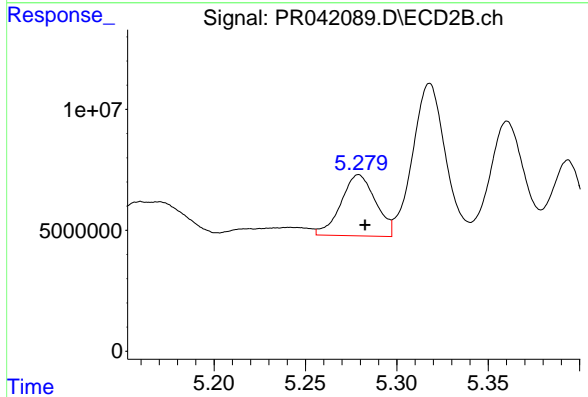




#13 AR-1232-3

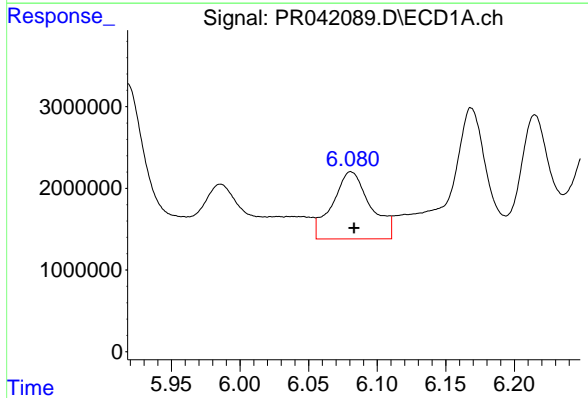
R.T.: 5.918 min  
 Delta R.T.: -0.001 min  
 Response: 30845293  
 Conc: 343.05 ng/ml

Instrument :  
 ECD\_R  
 ClientSampleId :



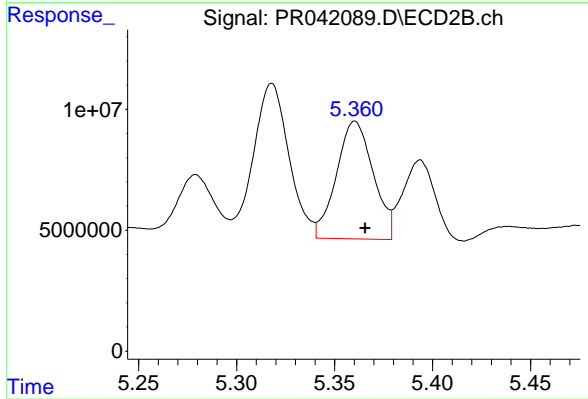
#13 AR-1232-3

R.T.: 5.279 min  
 Delta R.T.: -0.004 min  
 Response: 33399096  
 Conc: 198.32 ng/ml



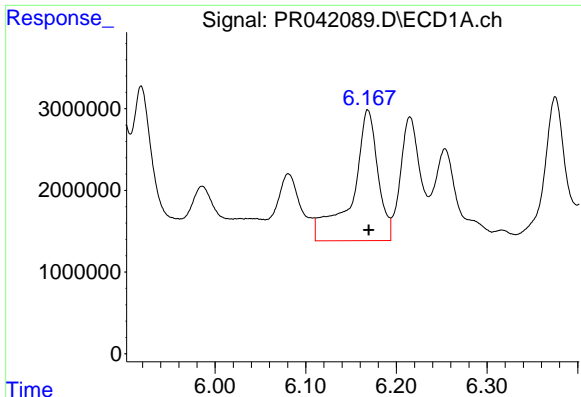
#14 AR-1232-4

R.T.: 6.081 min  
 Delta R.T.: -0.002 min  
 Response: 15838142  
 Conc: 355.88 ng/ml



#14 AR-1232-4

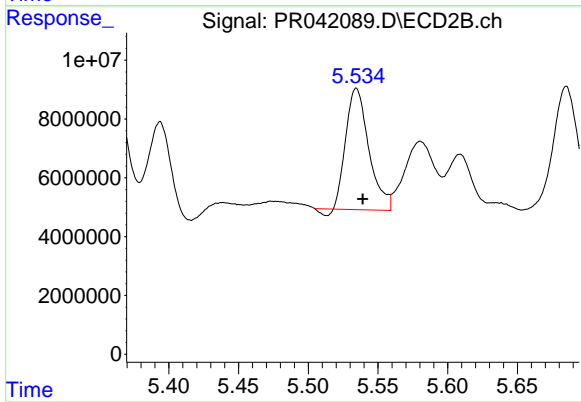
R.T.: 5.360 min  
 Delta R.T.: -0.005 min  
 Response: 63672059  
 Conc: 447.01 ng/ml



#15 AR-1232-5

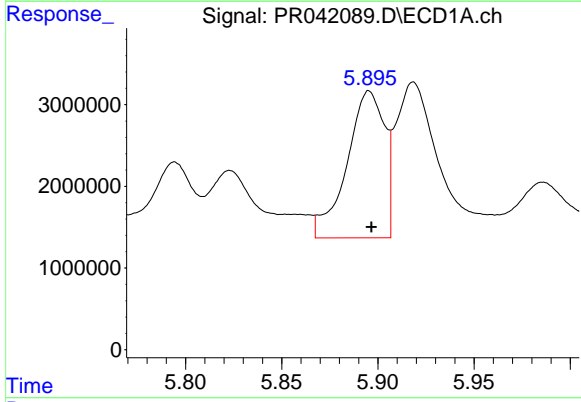
R.T.: 6.169 min  
 Delta R.T.: -0.001 min  
 Response: 31355333  
 Conc: 954.45 ng/ml

Instrument :  
 ECD\_R  
 ClientSampleId :



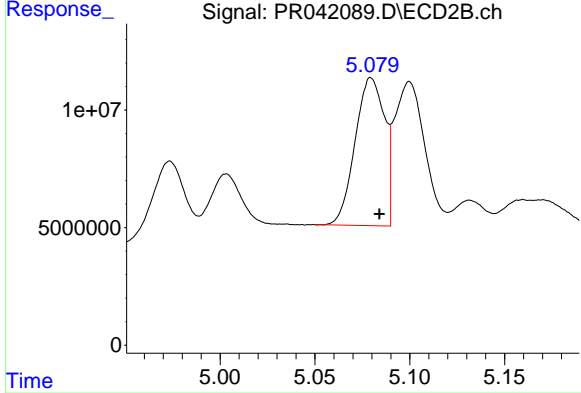
#15 AR-1232-5

R.T.: 5.535 min  
 Delta R.T.: -0.004 min  
 Response: 46842548  
 Conc: 347.62 ng/ml



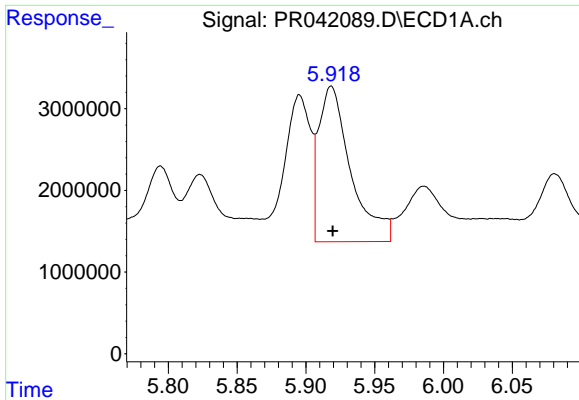
#16 AR-1242-1

R.T.: 5.895 min  
 Delta R.T.: -0.001 min  
 Response: 24446601  
 Conc: 221.69 ng/ml



#16 AR-1242-1

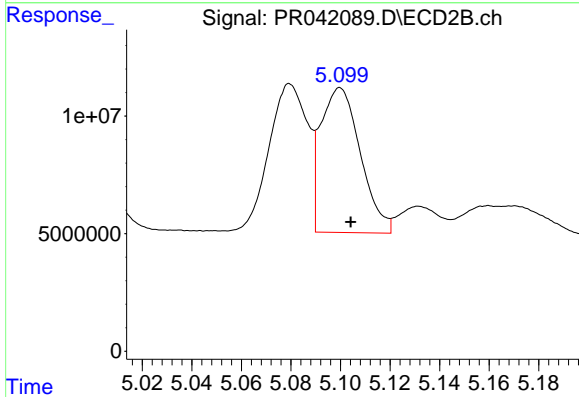
R.T.: 5.079 min  
 Delta R.T.: -0.004 min  
 Response: 67706463  
 Conc: 159.42 ng/ml



#17 AR-1242-2

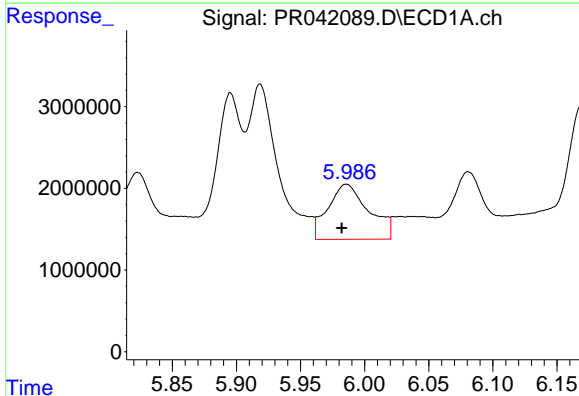
R.T.: 5.918 min  
 Delta R.T.: -0.001 min  
 Response: 30845293  
 Conc: 198.68 ng/ml

Instrument :  
 ECD\_R  
 ClientSampled :



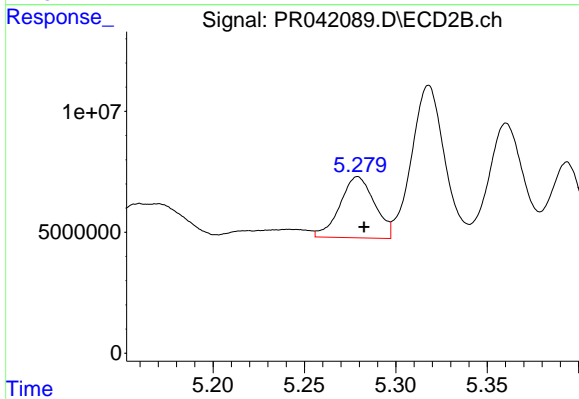
#17 AR-1242-2

R.T.: 5.100 min  
 Delta R.T.: -0.004 min  
 Response: 68584328  
 Conc: 120.51 ng/ml



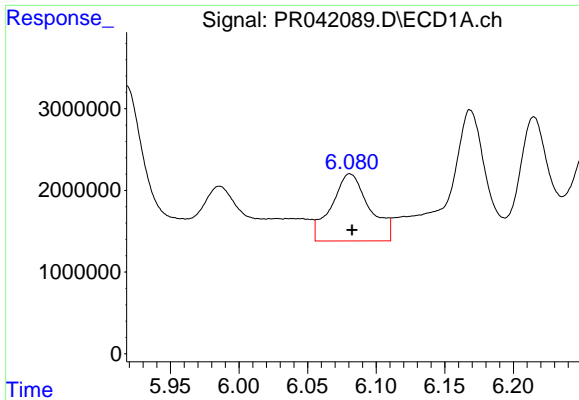
#18 AR-1242-3

R.T.: 5.986 min  
 Delta R.T.: 0.004 min  
 Response: 15000871  
 Conc: 159.87 ng/ml



#18 AR-1242-3

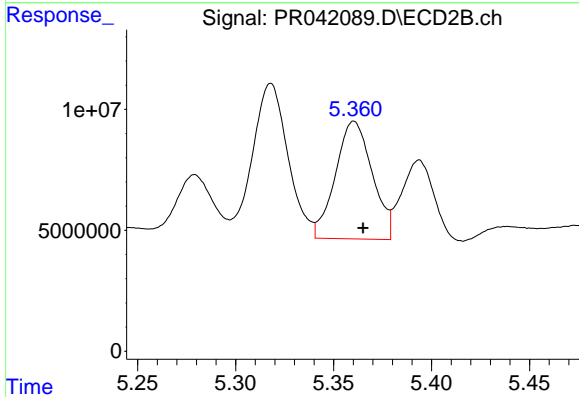
R.T.: 5.279 min  
 Delta R.T.: -0.004 min  
 Response: 33399096  
 Conc: 115.73 ng/ml



#19 AR-1242-4

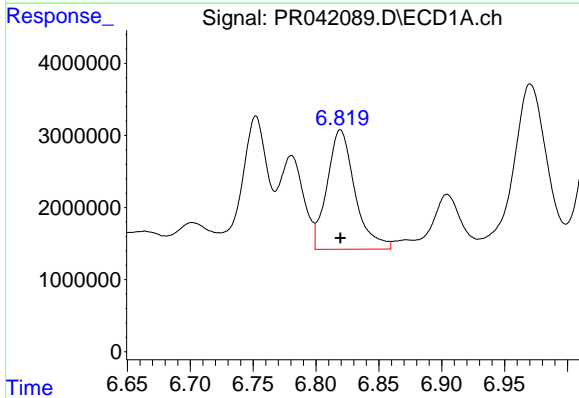
R.T.: 6.081 min  
 Delta R.T.: -0.002 min  
 Response: 15838142  
 Conc: 203.87 ng/ml

Instrument :  
 ECD\_R  
 ClientSampleId :



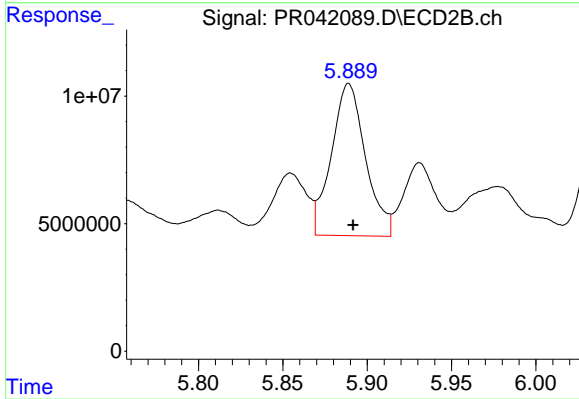
#19 AR-1242-4

R.T.: 5.360 min  
 Delta R.T.: -0.005 min  
 Response: 63672059  
 Conc: 244.59 ng/ml



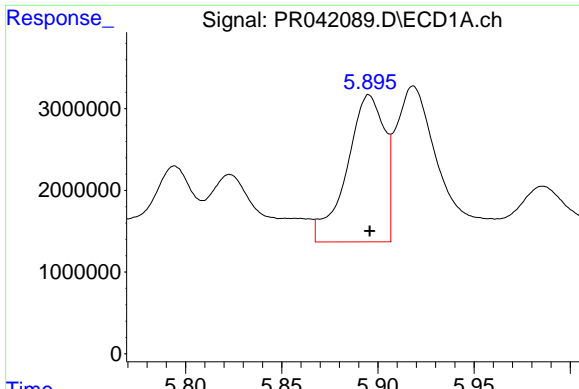
#20 AR-1242-5

R.T.: 6.819 min  
 Delta R.T.: 0.000 min  
 Response: 25542923  
 Conc: 291.83 ng/ml



#20 AR-1242-5

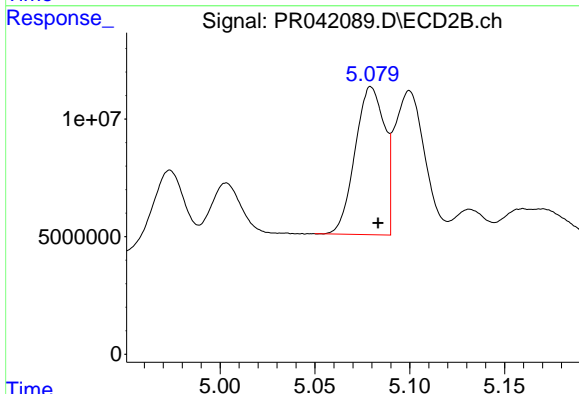
R.T.: 5.889 min  
 Delta R.T.: -0.003 min  
 Response: 83978943  
 Conc: 316.55 ng/ml



#21 AR-1248-1

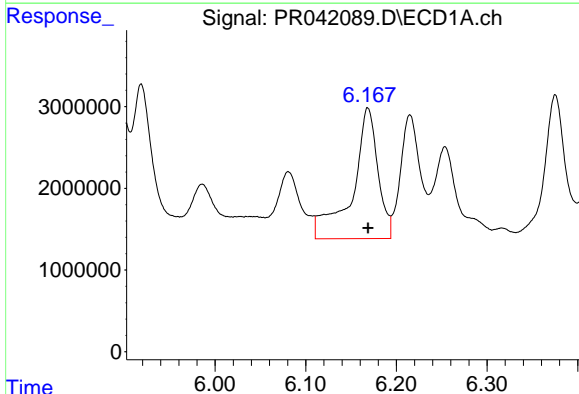
R.T.: 5.895 min  
 Delta R.T.: 0.000 min  
 Response: 24446601  
 Conc: 293.79 ng/ml

Instrument :  
 ECD\_R  
 ClientSampleId :



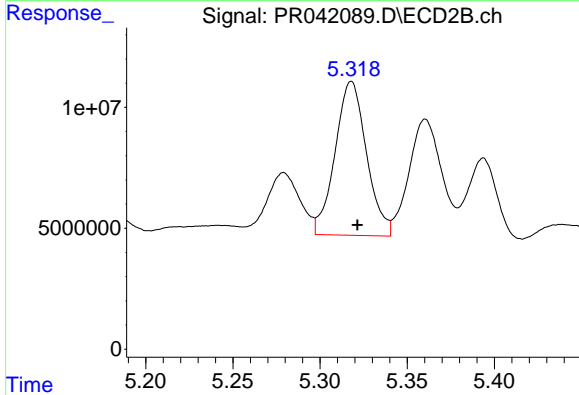
#21 AR-1248-1

R.T.: 5.079 min  
 Delta R.T.: -0.004 min  
 Response: 67706463  
 Conc: 207.73 ng/ml



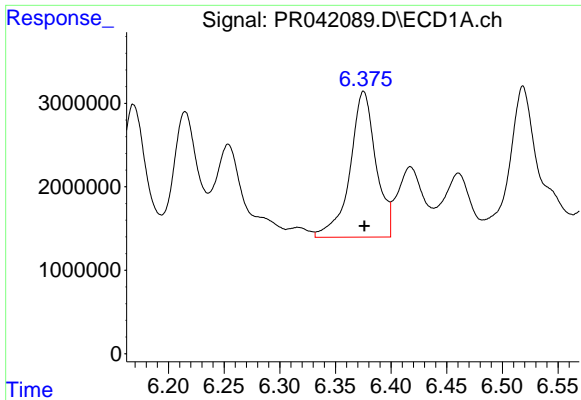
#22 AR-1248-2

R.T.: 6.169 min  
 Delta R.T.: 0.000 min  
 Response: 31355333  
 Conc: 273.24 ng/ml



#22 AR-1248-2

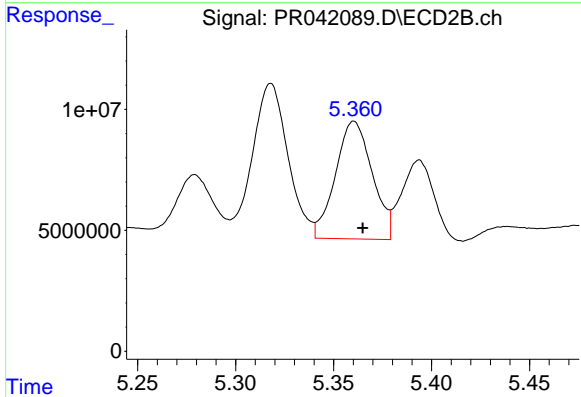
R.T.: 5.318 min  
 Delta R.T.: -0.003 min  
 Response: 80086941  
 Conc: 215.02 ng/ml



#23 AR-1248-3

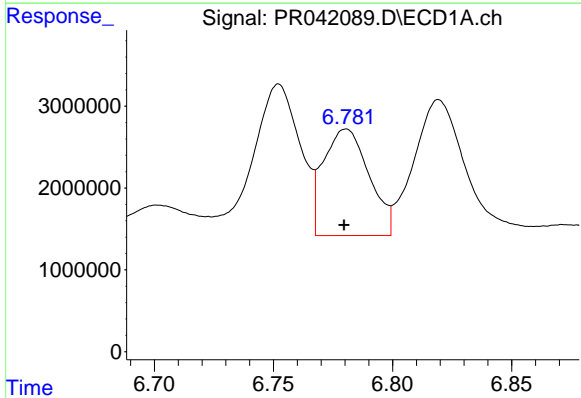
R.T.: 6.375 min  
Delta R.T.: 0.000 min  
Response: 28339783  
Conc: 218.57 ng/ml

Instrument :  
ECD\_R  
ClientSampleId :



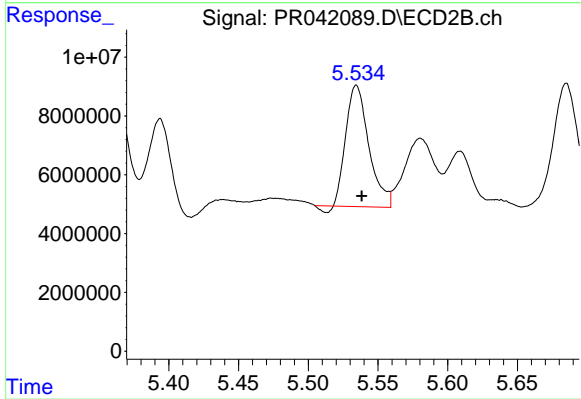
#23 AR-1248-3

R.T.: 5.360 min  
Delta R.T.: -0.004 min  
Response: 63672059  
Conc: 170.10 ng/ml



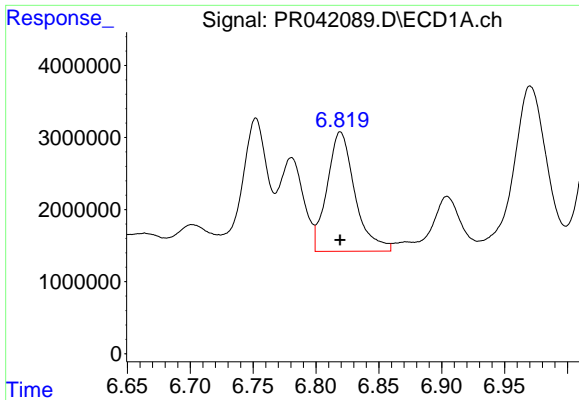
#24 AR-1248-4

R.T.: 6.780 min  
Delta R.T.: 0.000 min  
Response: 17365770  
Conc: 113.17 ng/ml



#24 AR-1248-4

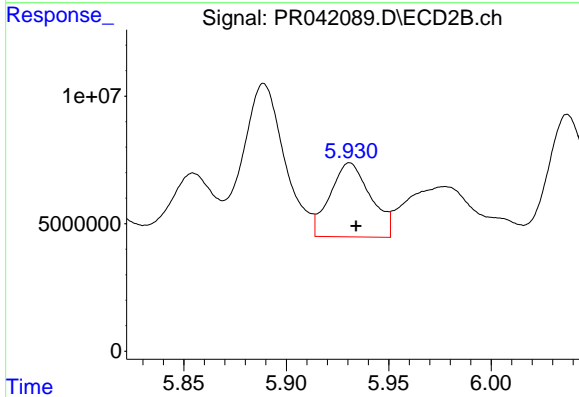
R.T.: 5.535 min  
Delta R.T.: -0.004 min  
Response: 46842548  
Conc: 117.61 ng/ml



#25 AR-1248-5

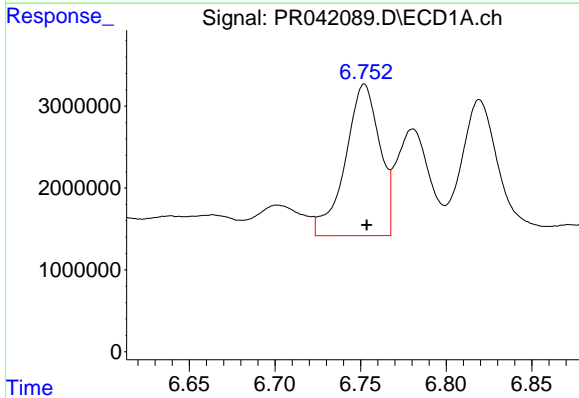
R.T.: 6.819 min  
 Delta R.T.: 0.000 min  
 Response: 25542923  
 Conc: 176.41 ng/ml

Instrument :  
 ECD\_R  
 ClientSampleId :



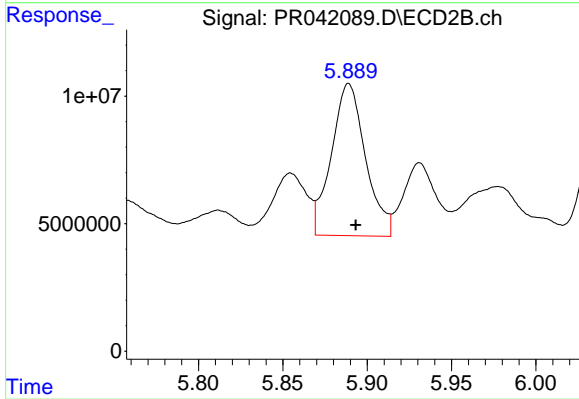
#25 AR-1248-5

R.T.: 5.931 min  
 Delta R.T.: -0.003 min  
 Response: 40054873  
 Conc: 114.68 ng/ml



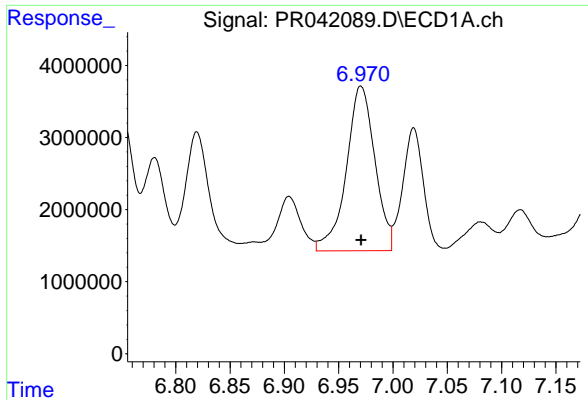
#26 AR-1254-1

R.T.: 6.752 min  
 Delta R.T.: -0.001 min  
 Response: 25941507  
 Conc: 158.85 ng/ml



#26 AR-1254-1

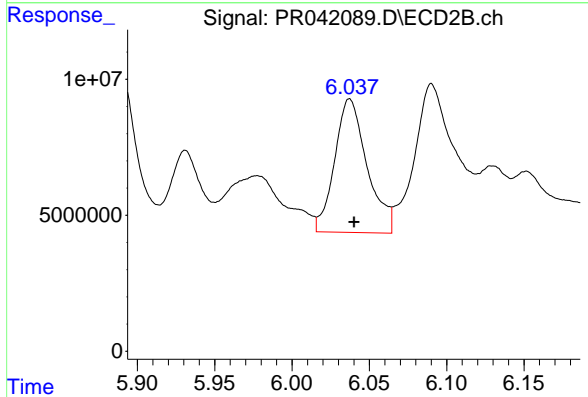
R.T.: 5.889 min  
 Delta R.T.: -0.004 min  
 Response: 83978943  
 Conc: 158.53 ng/ml



#27 AR-1254-2

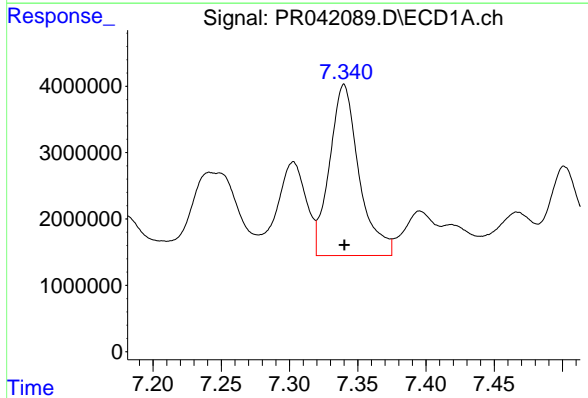
R.T.: 6.970 min  
 Delta R.T.: 0.000 min  
 Response: 41823155  
 Conc: 168.57 ng/ml

Instrument :  
 ECD\_R  
 ClientSampleId :



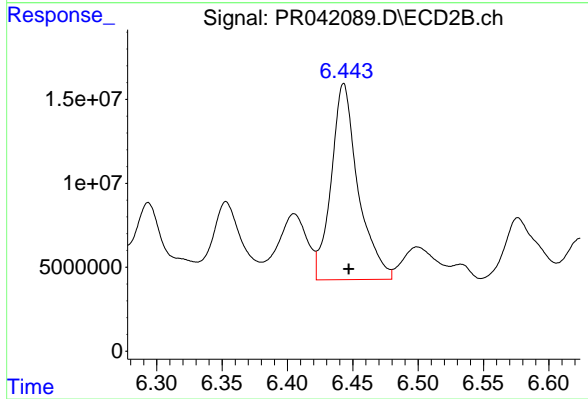
#27 AR-1254-2

R.T.: 6.037 min  
 Delta R.T.: -0.003 min  
 Response: 71866919  
 Conc: 143.35 ng/ml



#28 AR-1254-3

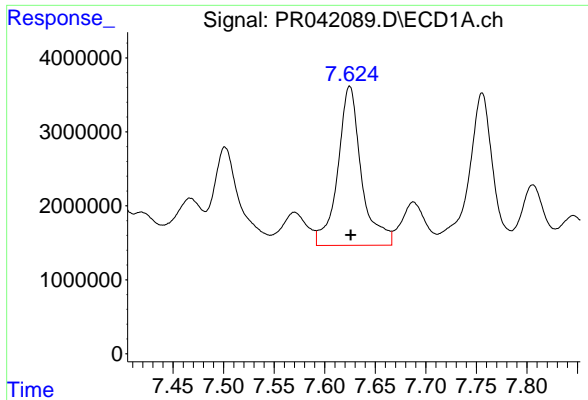
R.T.: 7.340 min  
 Delta R.T.: 0.000 min  
 Response: 38821844  
 Conc: 143.86 ng/ml



#28 AR-1254-3

R.T.: 6.443 min  
 Delta R.T.: -0.004 min  
 Response: 167442811  
 Conc: 177.48 ng/ml

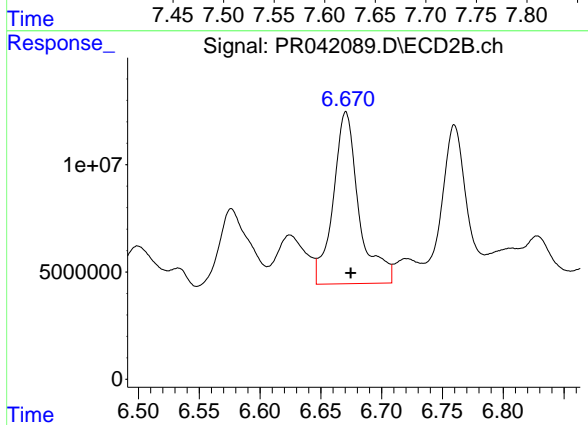




#29 AR-1254-4

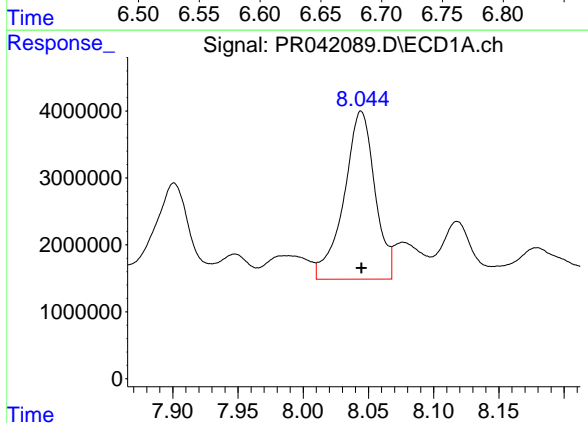
R.T.: 7.625 min  
 Delta R.T.: 0.000 min  
 Response: 35040600  
 Conc: 172.65 ng/ml

Instrument :  
 ECD\_R  
 ClientSampleId :



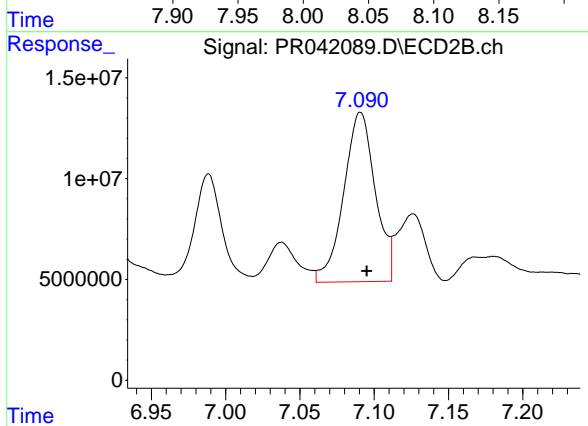
#29 AR-1254-4

R.T.: 6.671 min  
 Delta R.T.: -0.004 min  
 Response: 118251216  
 Conc: 178.61 ng/ml



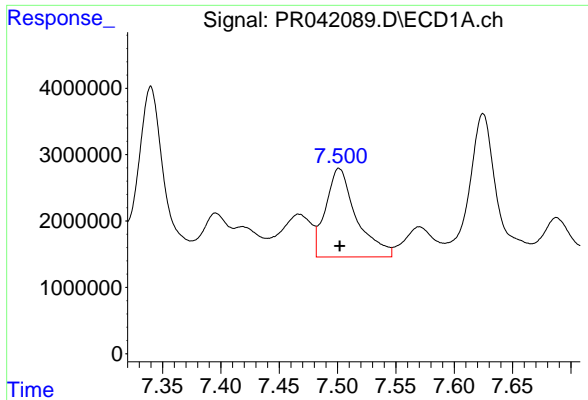
#30 AR-1254-5

R.T.: 8.044 min  
 Delta R.T.: 0.000 min  
 Response: 41372387  
 Conc: 194.55 ng/ml



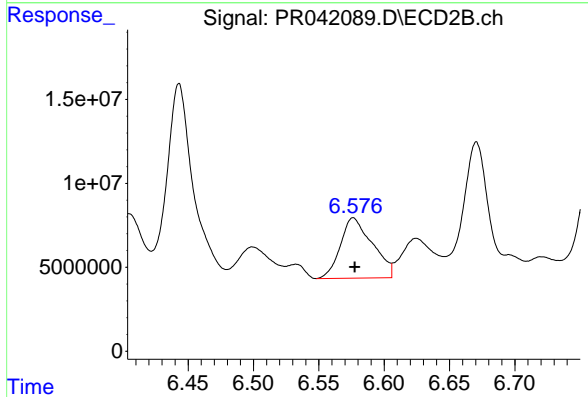
#30 AR-1254-5

R.T.: 7.091 min  
 Delta R.T.: -0.004 min  
 Response: 124587810  
 Conc: 145.10 ng/ml

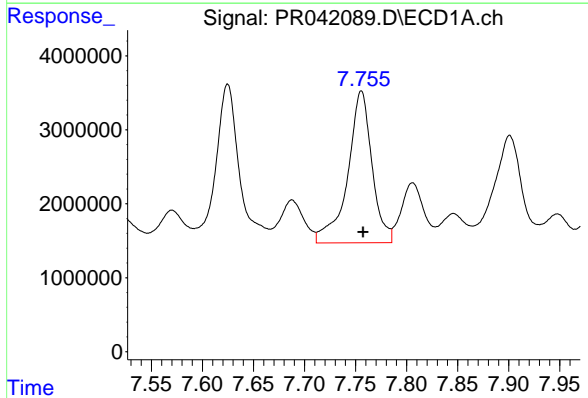


#31 AR-1260-1  
 R.T.: 7.501 min  
 Delta R.T.: 0.000 min  
 Response: 24415502  
 Conc: 128.86 ng/ml

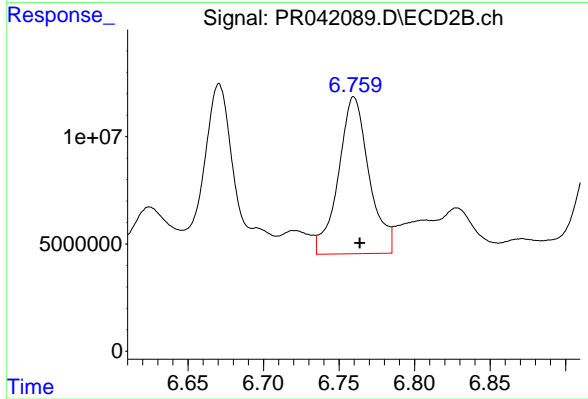
Instrument :  
 ECD\_R  
 ClientSampleId :



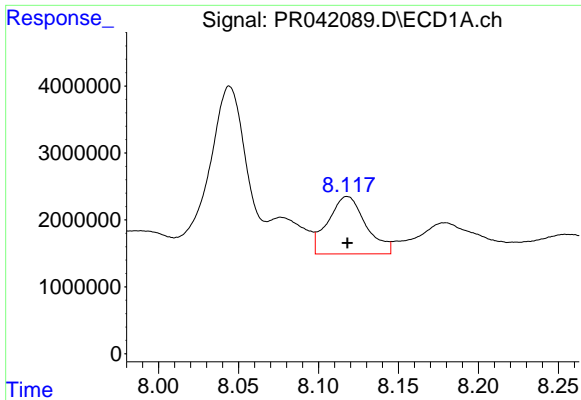
#31 AR-1260-1  
 R.T.: 6.576 min  
 Delta R.T.: -0.001 min  
 Response: 61153753  
 Conc: 103.17 ng/ml



#32 AR-1260-2  
 R.T.: 7.756 min  
 Delta R.T.: -0.002 min  
 Response: 34090174  
 Conc: 144.23 ng/ml



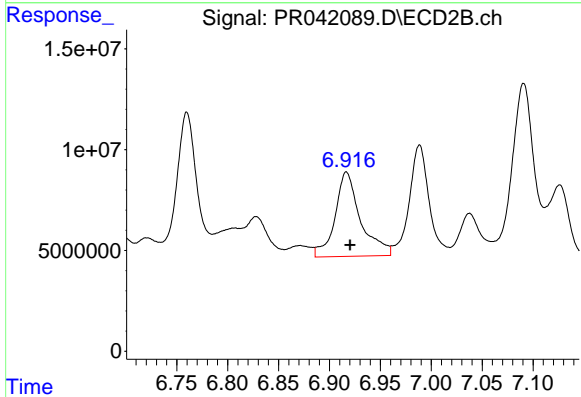
#32 AR-1260-2  
 R.T.: 6.760 min  
 Delta R.T.: -0.004 min  
 Response: 103470227  
 Conc: 126.91 ng/ml



#33 AR-1260-3

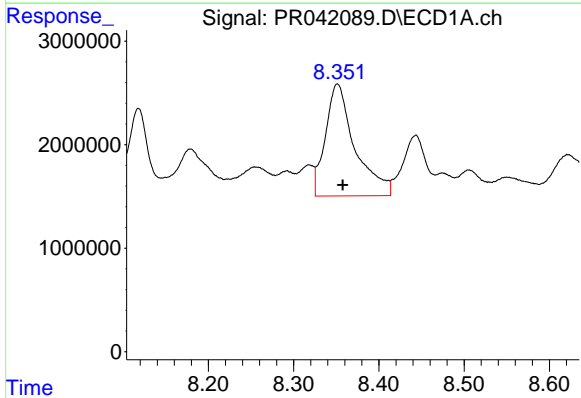
R.T.: 8.118 min  
 Delta R.T.: 0.000 min  
 Response: 14126057  
 Conc: 75.25 ng/ml

Instrument :  
 ECD\_R  
 ClientSampled :



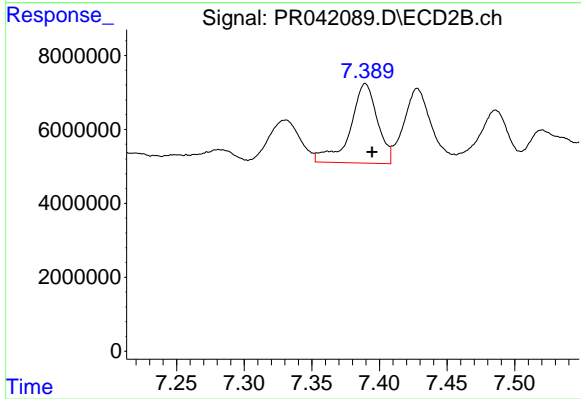
#33 AR-1260-3

R.T.: 6.917 min  
 Delta R.T.: -0.004 min  
 Response: 72984875  
 Conc: 105.57 ng/ml



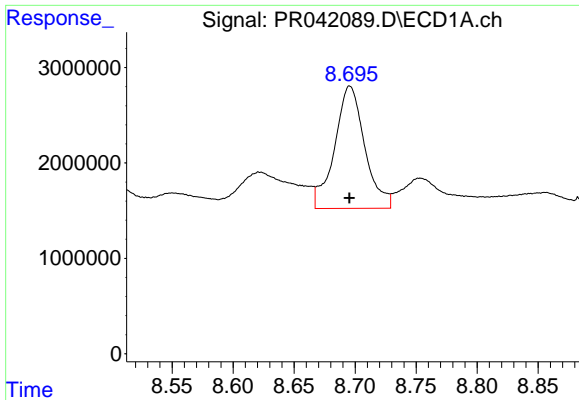
#34 AR-1260-4

R.T.: 8.351 min  
 Delta R.T.: -0.006 min  
 Response: 25991358  
 Conc: 129.33 ng/ml



#34 AR-1260-4

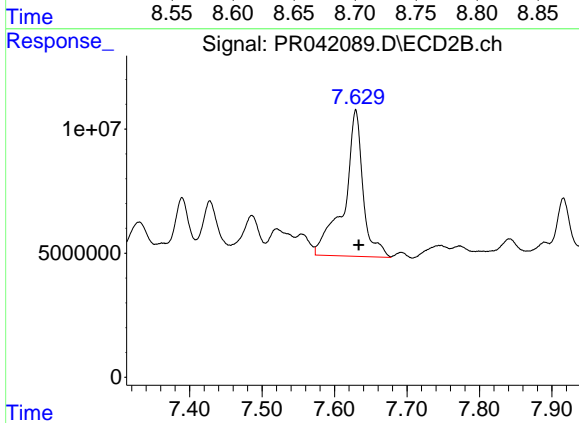
R.T.: 7.390 min  
 Delta R.T.: -0.005 min  
 Response: 30178188  
 Conc: 52.01 ng/ml



#35 AR-1260-5

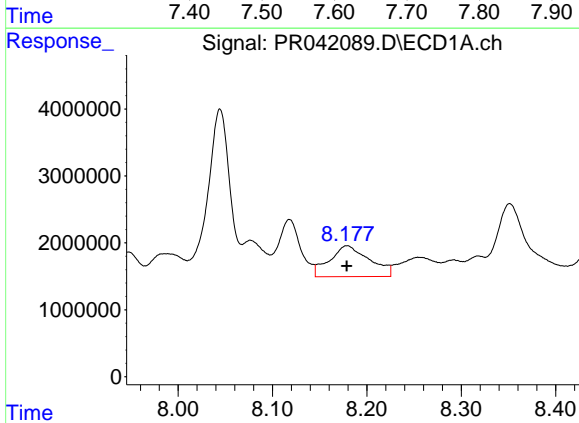
R.T.: 8.696 min  
 Delta R.T.: 0.000 min  
 Response: 22088393  
 Conc: 51.03 ng/ml

Instrument :  
 ECD\_R  
 ClientSampleId :



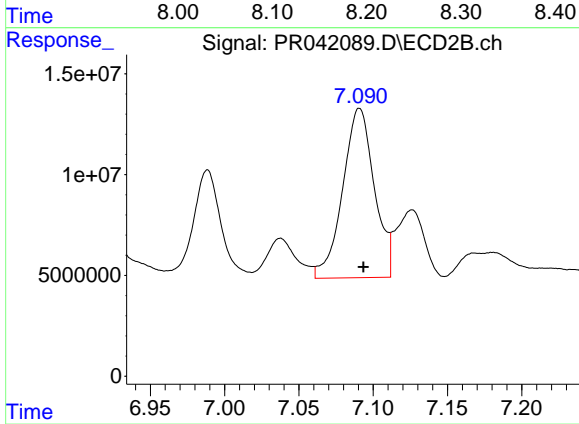
#35 AR-1260-5

R.T.: 7.629 min  
 Delta R.T.: -0.004 min  
 Response: 106617124  
 Conc: 65.58 ng/ml



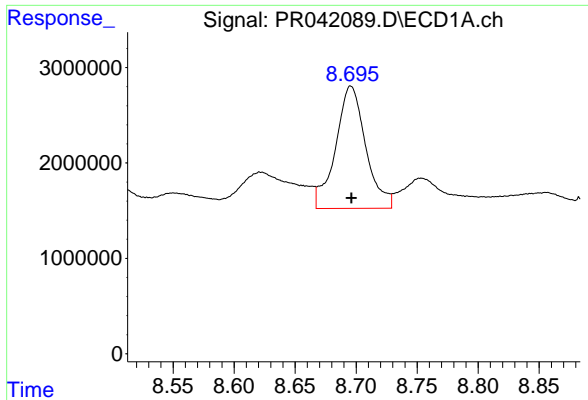
#36 AR-1262-1

R.T.: 8.179 min  
 Delta R.T.: 0.000 min  
 Response: 13584044  
 Conc: 144.31 ng/ml



#36 AR-1262-1

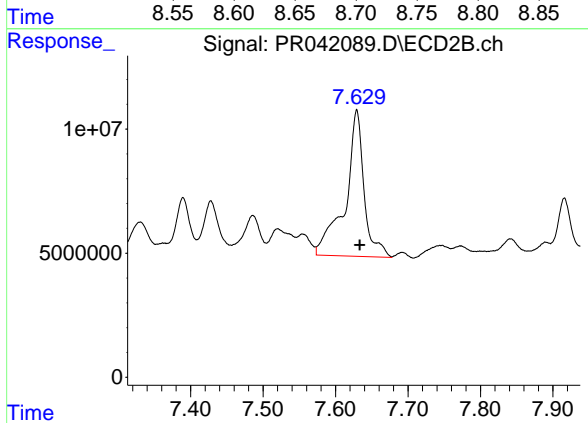
R.T.: 7.091 min  
 Delta R.T.: -0.003 min  
 Response: 124587810  
 Conc: 285.89 ng/ml



#37 AR-1262-2

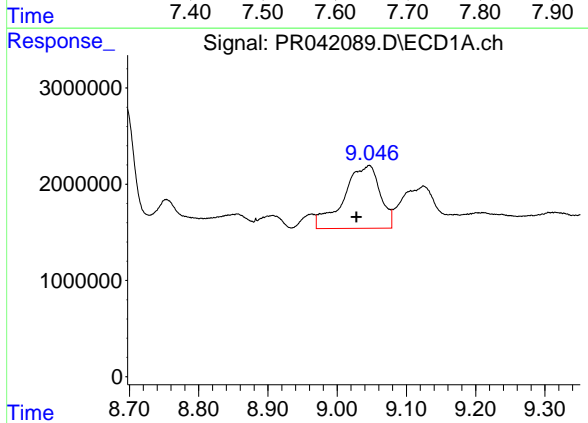
R.T.: 8.696 min  
 Delta R.T.: 0.000 min  
 Response: 22088393  
 Conc: 51.21 ng/ml

Instrument :  
 ECD\_R  
 ClientSampleId :



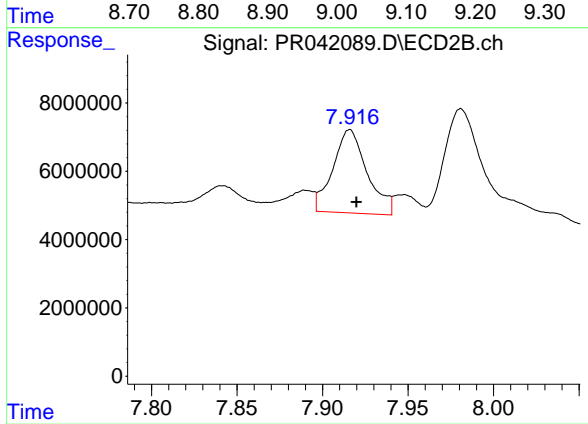
#37 AR-1262-2

R.T.: 7.629 min  
 Delta R.T.: -0.004 min  
 Response: 106617124  
 Conc: 61.93 ng/ml



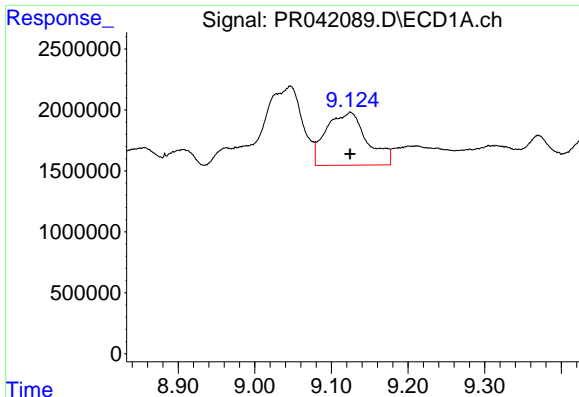
#38 AR-1262-3

R.T.: 9.046 min  
 Delta R.T.: 0.019 min  
 Response: 23780901  
 Conc: 85.31 ng/ml



#38 AR-1262-3

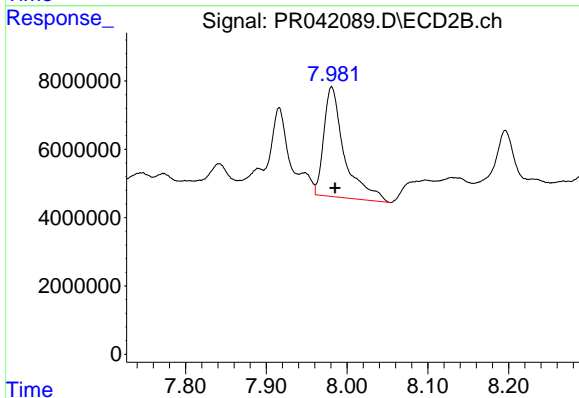
R.T.: 7.916 min  
 Delta R.T.: -0.004 min  
 Response: 34117302  
 Conc: 52.27 ng/ml



#39 AR-1262-4

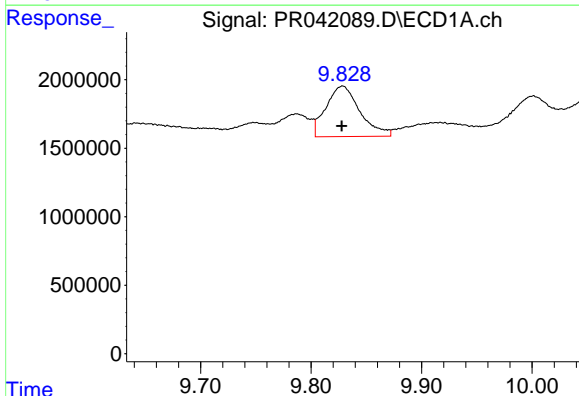
R.T.: 9.125 min  
 Delta R.T.: 0.000 min  
 Response: 16076623  
 Conc: 78.47 ng/ml

Instrument :  
 ECD\_R  
 ClientSampleId :



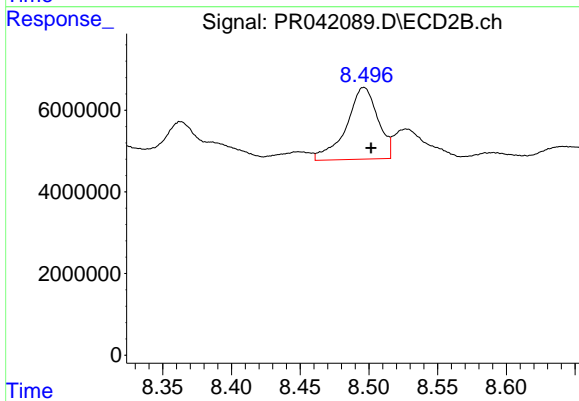
#39 AR-1262-4

R.T.: 7.981 min  
 Delta R.T.: -0.004 min  
 Response: 57154166  
 Conc: 48.91 ng/ml



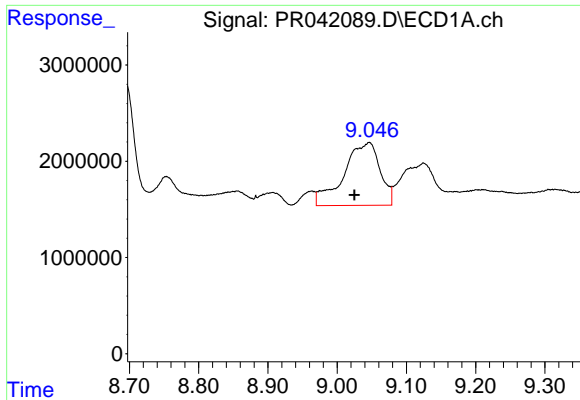
#40 AR-1262-5

R.T.: 9.829 min  
 Delta R.T.: 0.000 min  
 Response: 7881931  
 Conc: 54.64 ng/ml



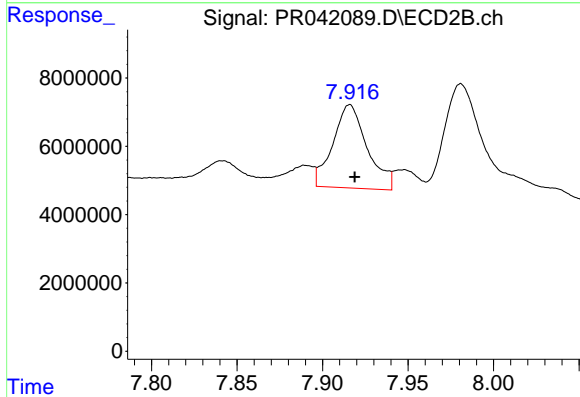
#40 AR-1262-5

R.T.: 8.496 min  
 Delta R.T.: -0.005 min  
 Response: 28009525  
 Conc: 52.36 ng/ml

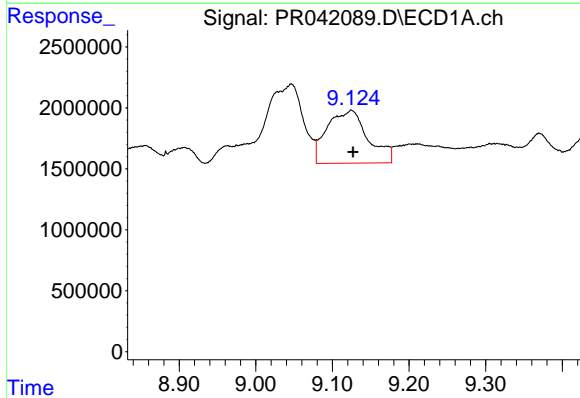


#41 AR-1268-1  
 R.T.: 9.046 min  
 Delta R.T.: 0.021 min  
 Response: 23780901  
 Conc: 43.30 ng/ml

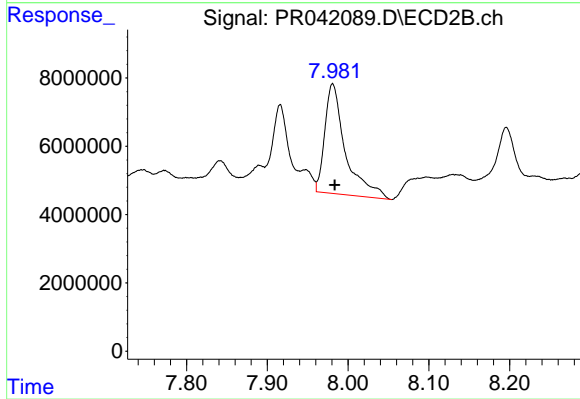
Instrument :  
 ECD\_R  
 ClientSampleId :



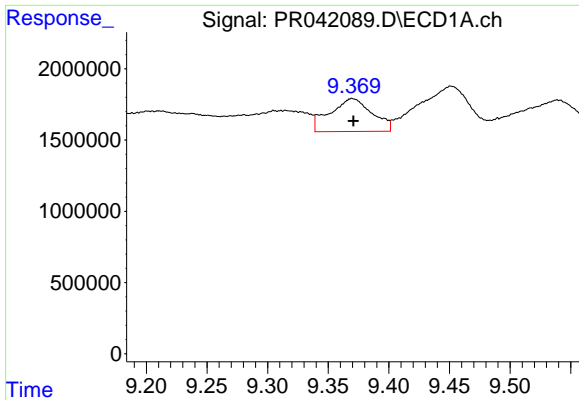
#41 AR-1268-1  
 R.T.: 7.916 min  
 Delta R.T.: -0.003 min  
 Response: 34117302  
 Conc: 15.56 ng/ml



#42 AR-1268-2  
 R.T.: 9.125 min  
 Delta R.T.: -0.002 min  
 Response: 16076623  
 Conc: 32.34 ng/ml



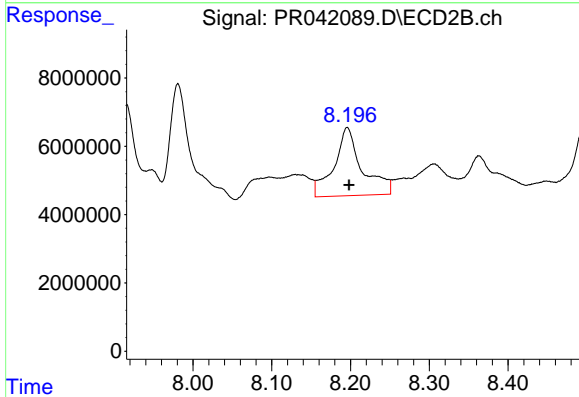
#42 AR-1268-2  
 R.T.: 7.981 min  
 Delta R.T.: -0.003 min  
 Response: 57154166  
 Conc: 28.72 ng/ml



#43 AR-1268-3

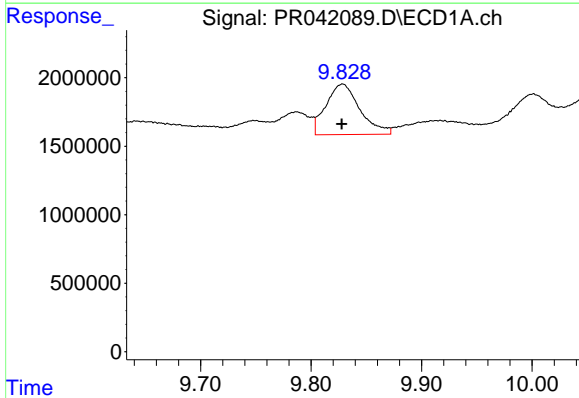
R.T.: 9.370 min  
 Delta R.T.: 0.000 min  
 Response: 5603068  
 Conc: 13.74 ng/ml

Instrument :  
 ECD\_R  
 ClientSampleId :



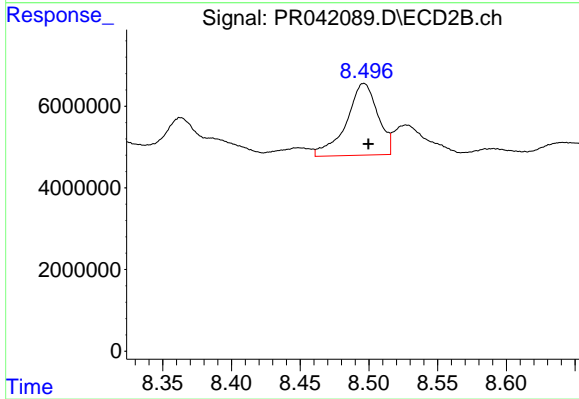
#43 AR-1268-3

R.T.: 8.196 min  
 Delta R.T.: -0.002 min  
 Response: 49359632  
 Conc: 29.45 ng/ml



#44 AR-1268-4

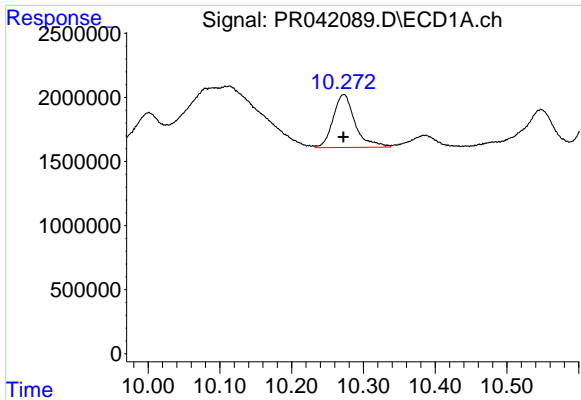
R.T.: 9.829 min  
 Delta R.T.: 0.000 min  
 Response: 7881931  
 Conc: 44.92 ng/ml



#44 AR-1268-4

R.T.: 8.496 min  
 Delta R.T.: -0.003 min  
 Response: 28009525  
 Conc: 43.40 ng/ml

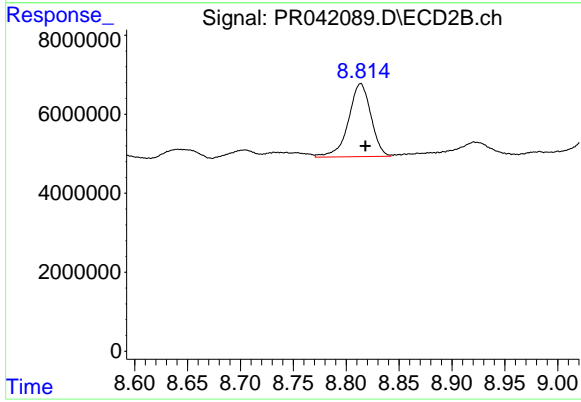




#45 AR-1268-5

R.T.: 10.273 min  
Delta R.T.: 0.000 min  
Response: 8814132  
Conc: 6.76 ng/ml

Instrument :  
ECD\_R  
ClientSampleId :



#45 AR-1268-5

R.T.: 8.814 min  
Delta R.T.: -0.005 min  
Response: 27299647  
Conc: 5.95 ng/ml