

Data Path : Z:\pestpcbsrv\HPCHEM1\ECD_R\Data\PR101023\
 Data File : PR063878.D
 Signal(s) : Signal #1: ECD1A.ch Signal #2: ECD2B.ch
 Acq On : 10 Oct 2023 12:23
 Operator : AJ\MA
 Sample : AR1242ICC500
 Misc :
 ALS Vial : 10 Sample Multiplier: 1

Instrument :
 ECD_R
 ClientSampleId :

Integration File signal 1: autoint1.e
 Integration File signal 2: autoint2.e
 Quant Time: Oct 10 12:53:07 2023
 Quant Method : Z:\pestpcbsrv\HPCHEM1\ECD_R\Method\PR101023.M
 Quant Title : GC EXTRACTABLES
 QLast Update : Tue Oct 10 12:52:55 2023
 Response via : Initial Calibration
 Integrator: ChemStation

Volume Inj. : 2 µl
 Signal #1 Phase : ZB-MR1 Signal #2 Phase: ZB-MR2
 Signal #1 Info : 30Mx0.32mmx 0.50µ Signal #2 Info : 30M x 0.32mm x 0.25µm

Compound	RT#1	RT#2	Resp#1	Resp#2	ng/ml	ng/ml

System Monitoring Compounds						
1) SA Tetrachlo...	3.736	3.026	331.9E6	206.1E6	50.000	50.000
2) SA Decachlor...	9.764	8.435	235.9E6	154.4E6	50.000	50.000
Target Compounds						
8) L2 AR-1221-1	3.960	3.258	9014191	5934358	121.739	122.959
9) L2 AR-1221-2	4.053	3.347	12859892	9192081	244.284	248.215
10) L2 AR-1221-3	4.132	3.427	46235508	30975571	274.864	279.241
11) L3 AR-1232-1	4.132	3.427	46235508	30975571	363.205	363.737
12) L3 AR-1232-2	4.691	4.198	59915132	73504728	817.952	843.181
13) L3 AR-1232-3	5.002	4.382	118.5E6	40824741	853.279	847.209
14) L3 AR-1232-4	5.171	4.477	60408045	40297902	860.752	965.114
15) L3 AR-1232-5	5.276	4.658	49827825	44088337	972.689	922.403
16) L4 AR-1242-1	4.980	4.179	78424511	53854139	500.000	500.000
17) L4 AR-1242-2	5.002	4.198	118.5E6	73504728	500.000	500.000
18) L4 AR-1242-3	5.067	4.382	75509777	40824741	500.000	500.000
19) L4 AR-1242-4	5.171	4.477	60408045	40297902	500.000	500.000
20) L4 AR-1242-5	5.968	5.037	61840195	51847593	500.000	500.000

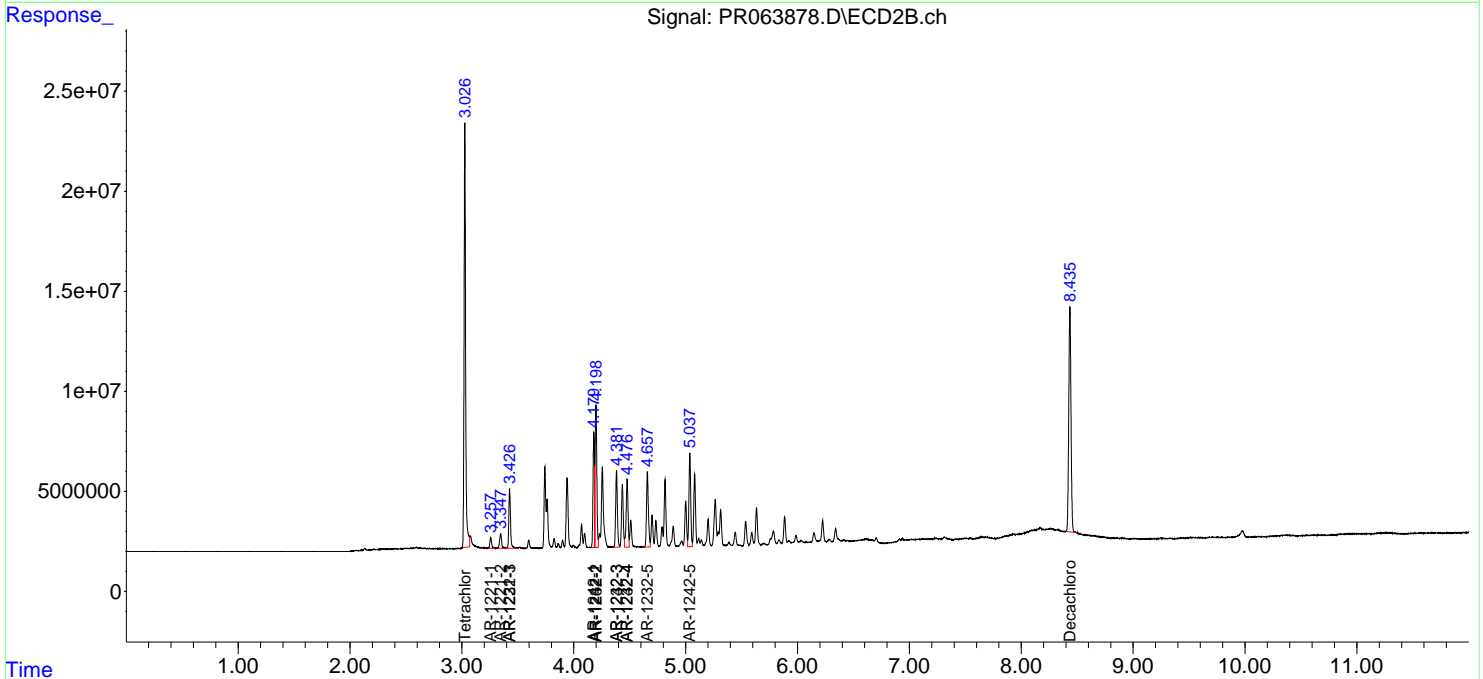
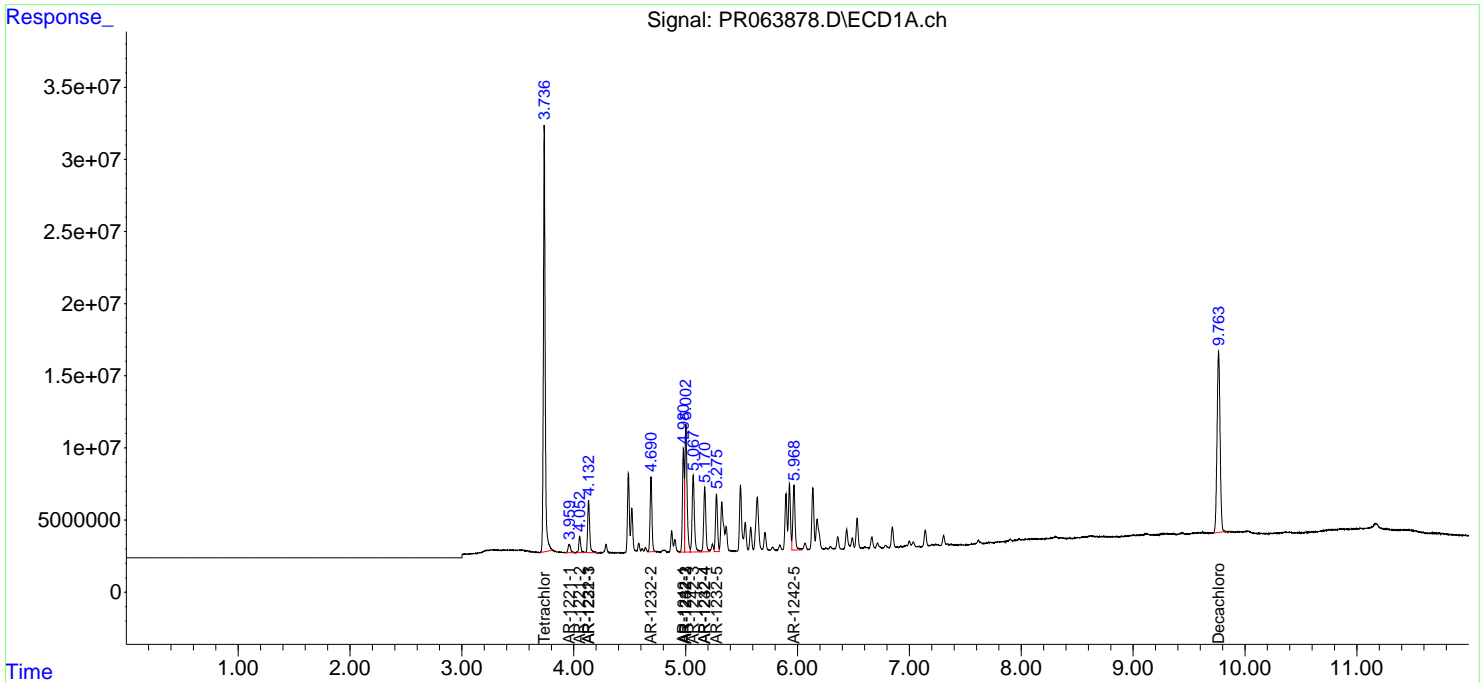
(f)=RT Delta > 1/2 Window (#)=Amounts differ by > 25% (m)=manual int.

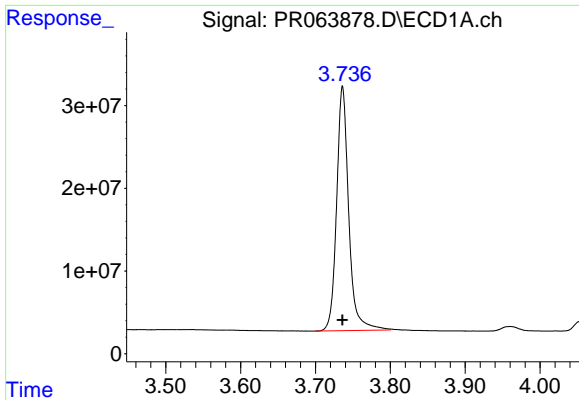
Data Path : Z:\pestpcbsrv\HPCHEM1\ECD_R\Data\PR101023\
 Data File : PR063878.D
 Signal(s) : Signal #1: ECD1A.ch Signal #2: ECD2B.ch
 Acq On : 10 Oct 2023 12:23
 Operator : AJ\MA
 Sample : AR1242ICC500
 Misc :
 ALS Vial : 10 Sample Multiplier: 1

Instrument :
 ECD_R
 ClientSampleId :

Integration File signal 1: autoint1.e
 Integration File signal 2: autoint2.e
 Quant Time: Oct 10 12:53:07 2023
 Quant Method : Z:\pestpcbsrv\HPCHEM1\ECD_R\Method\PR101023.M
 Quant Title : GC EXTRACTABLES
 QLast Update : Tue Oct 10 12:52:55 2023
 Response via : Initial Calibration
 Integrator: ChemStation

Volume Inj. : 2 µl
 Signal #1 Phase : ZB-MR1 Signal #2 Phase: ZB-MR2
 Signal #1 Info : 30Mx0.32mmx 0.50µ Signal #2 Info : 30M x 0.32mm x 0.25µm

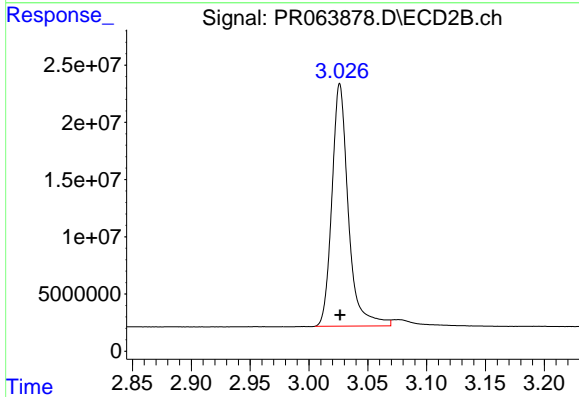




#1 Tetrachloro-m-xylene

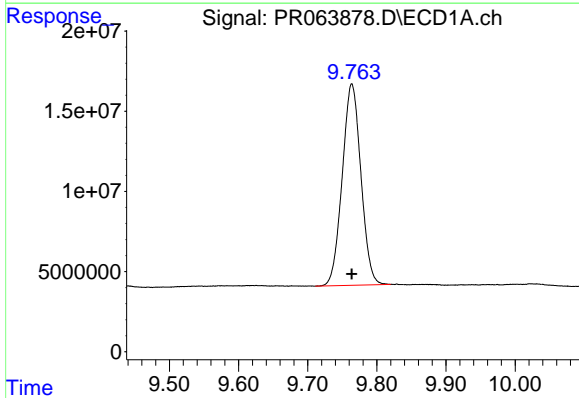
R.T.: 3.736 min
Delta R.T.: 0.000 min
Response: 331862905
Conc: 50.00 ng/ml

Instrument :
ECD_R
ClientSampleId :



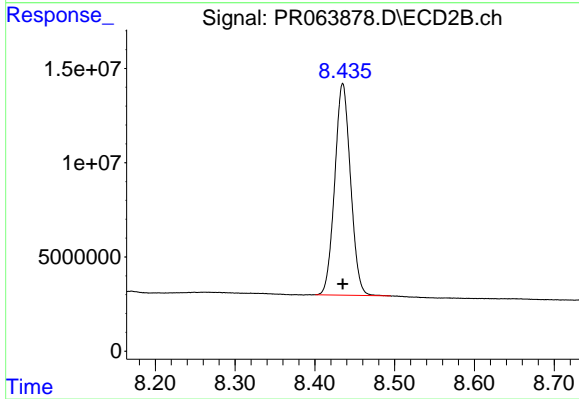
#1 Tetrachloro-m-xylene

R.T.: 3.026 min
Delta R.T.: 0.000 min
Response: 206057046
Conc: 50.00 ng/ml



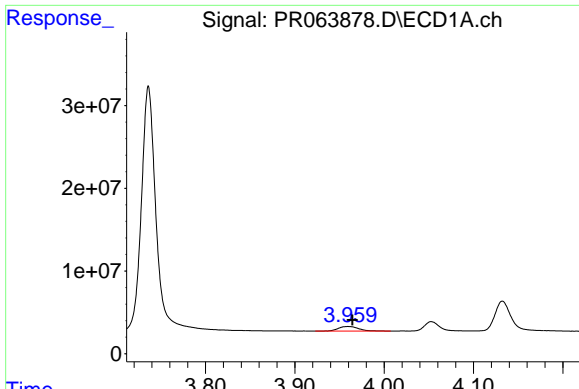
#2 Decachlorobiphenyl

R.T.: 9.764 min
Delta R.T.: 0.000 min
Response: 235948346
Conc: 50.00 ng/ml



#2 Decachlorobiphenyl

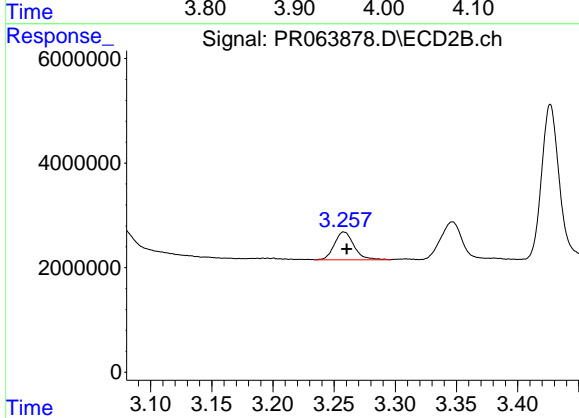
R.T.: 8.435 min
Delta R.T.: 0.000 min
Response: 154416951
Conc: 50.00 ng/ml



#8 AR-1221-1

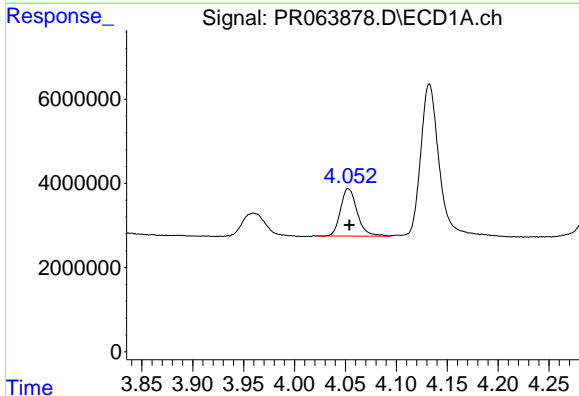
R.T.: 3.960 min
 Delta R.T.: -0.005 min
 Response: 9014191
 Conc: 121.74 ng/ml

Instrument :
 ECD_R
 ClientSampleId :



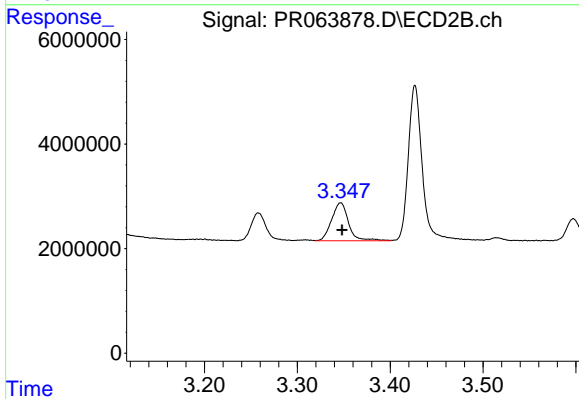
#8 AR-1221-1

R.T.: 3.258 min
 Delta R.T.: -0.002 min
 Response: 5934358
 Conc: 122.96 ng/ml



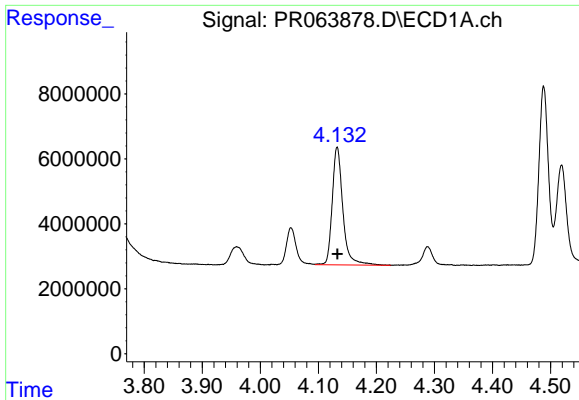
#9 AR-1221-2

R.T.: 4.053 min
 Delta R.T.: -0.001 min
 Response: 12859892
 Conc: 244.28 ng/ml



#9 AR-1221-2

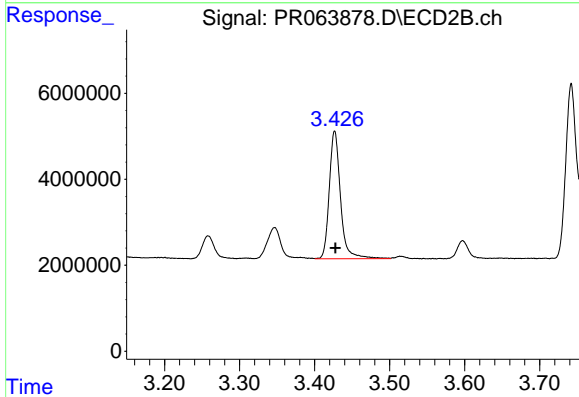
R.T.: 3.347 min
 Delta R.T.: -0.002 min
 Response: 9192081
 Conc: 248.21 ng/ml



#10 AR-1221-3

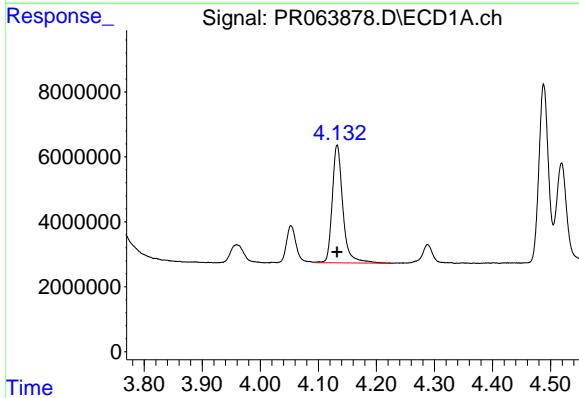
R.T.: 4.132 min
Delta R.T.: 0.000 min
Response: 46235508
Conc: 274.86 ng/ml

Instrument :
ECD_R
ClientSampleId :



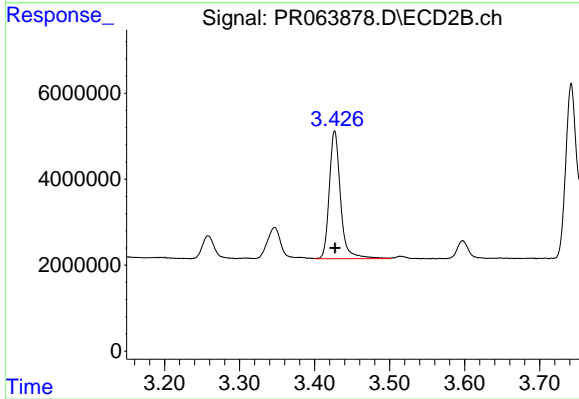
#10 AR-1221-3

R.T.: 3.427 min
Delta R.T.: 0.000 min
Response: 30975571
Conc: 279.24 ng/ml



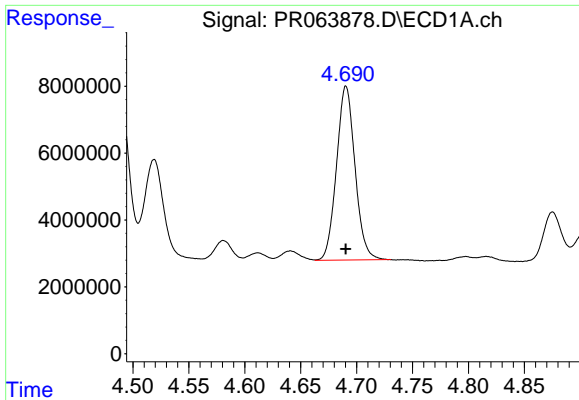
#11 AR-1232-1

R.T.: 4.132 min
Delta R.T.: 0.000 min
Response: 46235508
Conc: 363.21 ng/ml



#11 AR-1232-1

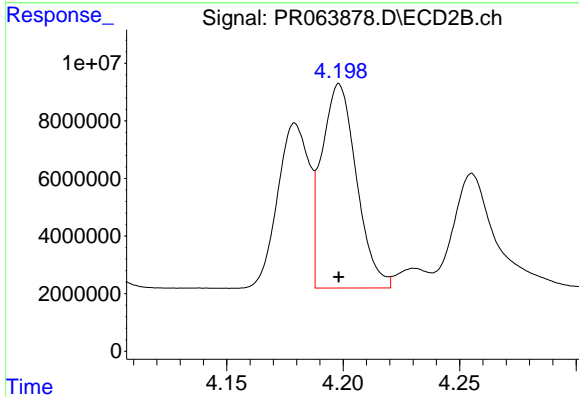
R.T.: 3.427 min
Delta R.T.: 0.000 min
Response: 30975571
Conc: 363.74 ng/ml



#12 AR-1232-2

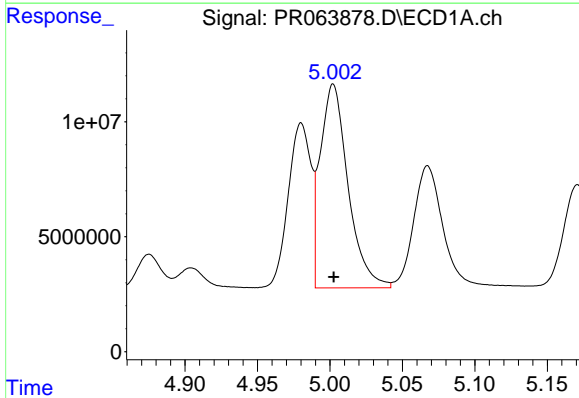
R.T.: 4.691 min
 Delta R.T.: 0.000 min
 Response: 59915132
 Conc: 817.95 ng/ml

Instrument :
 ECD_R
 ClientSampleId :



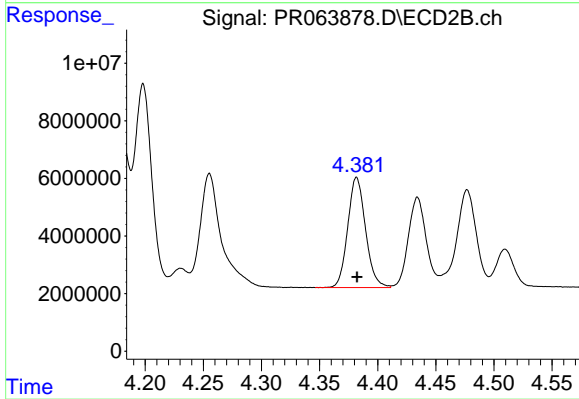
#12 AR-1232-2

R.T.: 4.198 min
 Delta R.T.: 0.000 min
 Response: 73504728
 Conc: 843.18 ng/ml



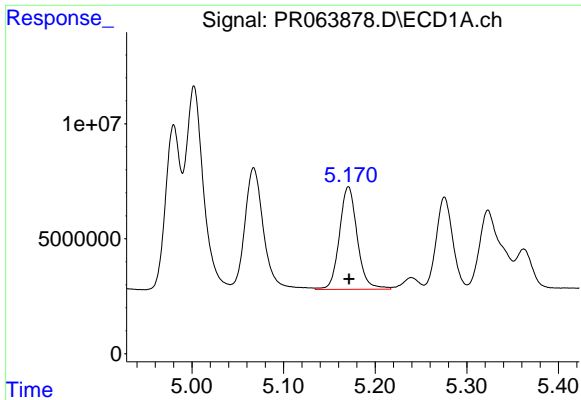
#13 AR-1232-3

R.T.: 5.002 min
 Delta R.T.: 0.000 min
 Response: 118495637
 Conc: 853.28 ng/ml



#13 AR-1232-3

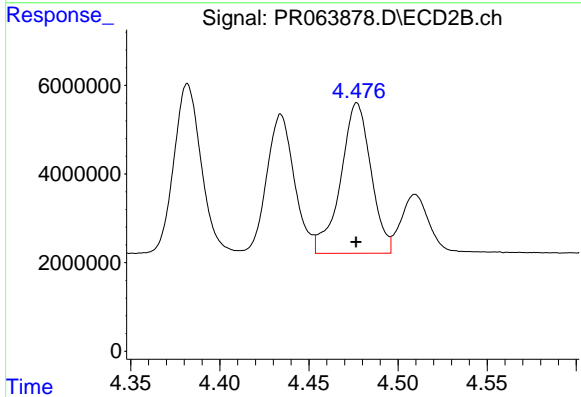
R.T.: 4.382 min
 Delta R.T.: 0.000 min
 Response: 40824741
 Conc: 847.21 ng/ml



#14 AR-1232-4

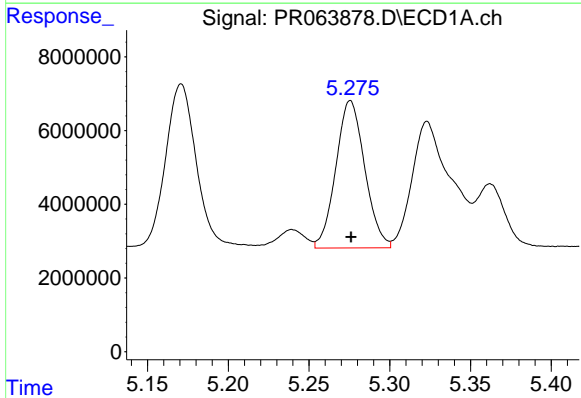
R.T.: 5.171 min
 Delta R.T.: 0.000 min
 Response: 60408045
 Conc: 860.75 ng/ml

Instrument :
 ECD_R
 ClientSampleId :



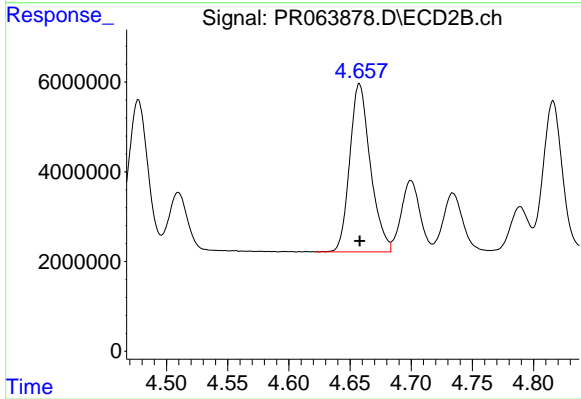
#14 AR-1232-4

R.T.: 4.477 min
 Delta R.T.: 0.000 min
 Response: 40297902
 Conc: 965.11 ng/ml



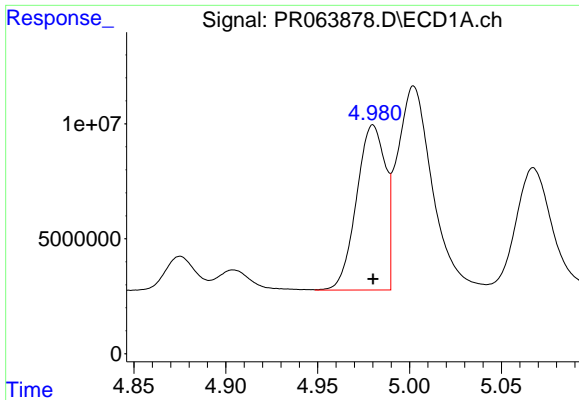
#15 AR-1232-5

R.T.: 5.276 min
 Delta R.T.: 0.000 min
 Response: 49827825
 Conc: 972.69 ng/ml



#15 AR-1232-5

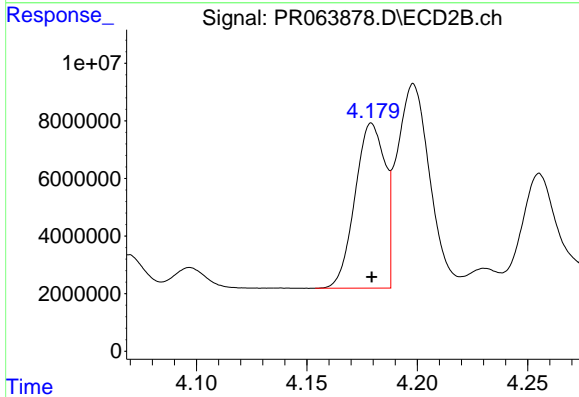
R.T.: 4.658 min
 Delta R.T.: 0.000 min
 Response: 44088337
 Conc: 922.40 ng/ml



#16 AR-1242-1

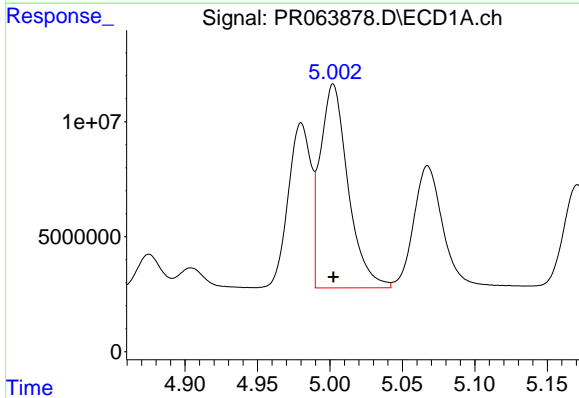
R.T.: 4.980 min
 Delta R.T.: 0.000 min
 Response: 78424511
 Conc: 500.00 ng/ml

Instrument :
 ECD_R
 ClientSampleId :



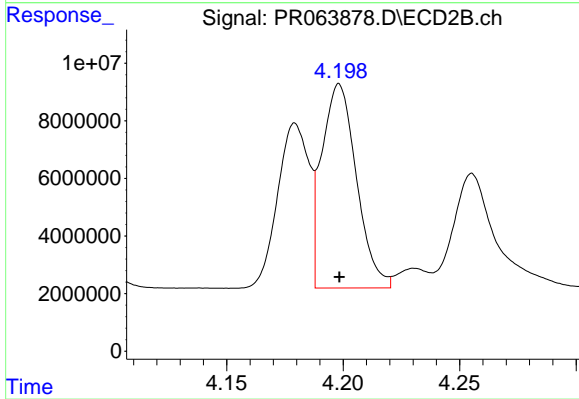
#16 AR-1242-1

R.T.: 4.179 min
 Delta R.T.: 0.000 min
 Response: 53854139
 Conc: 500.00 ng/ml



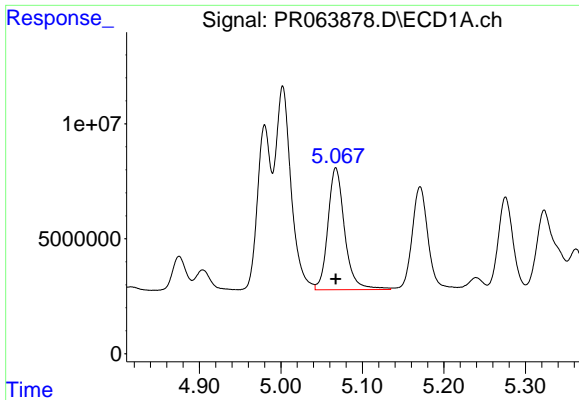
#17 AR-1242-2

R.T.: 5.002 min
 Delta R.T.: 0.000 min
 Response: 118495637
 Conc: 500.00 ng/ml



#17 AR-1242-2

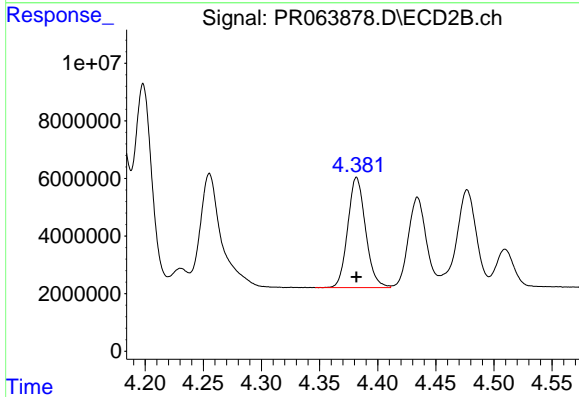
R.T.: 4.198 min
 Delta R.T.: 0.000 min
 Response: 73504728
 Conc: 500.00 ng/ml



#18 AR-1242-3

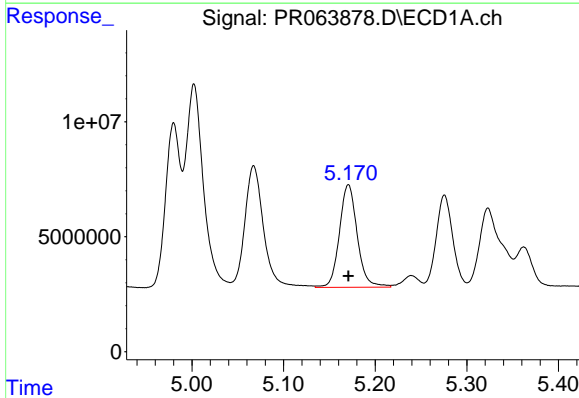
R.T.: 5.067 min
 Delta R.T.: 0.000 min
 Response: 75509777
 Conc: 500.00 ng/ml

Instrument :
 ECD_R
 ClientSampleId :



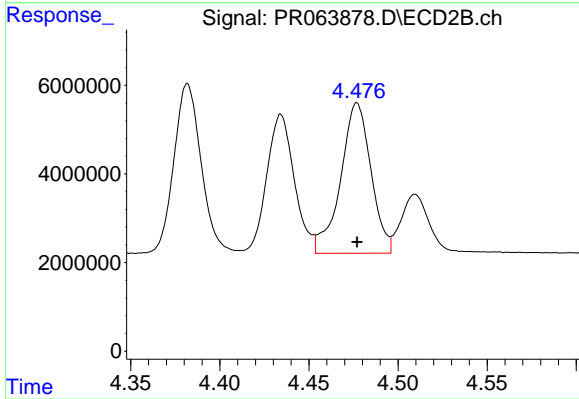
#18 AR-1242-3

R.T.: 4.382 min
 Delta R.T.: 0.000 min
 Response: 40824741
 Conc: 500.00 ng/ml



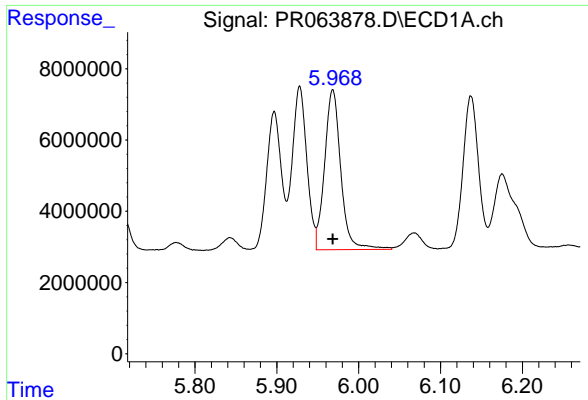
#19 AR-1242-4

R.T.: 5.171 min
 Delta R.T.: 0.000 min
 Response: 60408045
 Conc: 500.00 ng/ml



#19 AR-1242-4

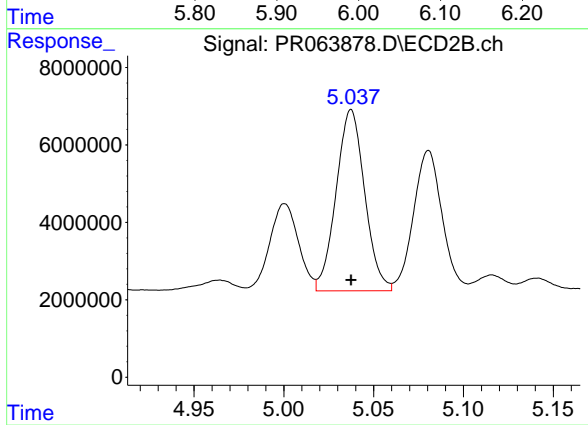
R.T.: 4.477 min
 Delta R.T.: 0.000 min
 Response: 40297902
 Conc: 500.00 ng/ml



#20 AR-1242-5

R.T.: 5.968 min
Delta R.T.: 0.000 min
Response: 61840195
Conc: 500.00 ng/ml

Instrument :
ECD_R
ClientSampleId :



#20 AR-1242-5

R.T.: 5.037 min
Delta R.T.: 0.000 min
Response: 51847593
Conc: 500.00 ng/ml