

Data Path : Z:\pestpcbsrv\HPCHEM1\ECD\_R\Data\PR101023\  
 Data File : PR063883.D  
 Signal(s) : Signal #1: ECD1A.ch Signal #2: ECD2B.ch  
 Acq On : 10 Oct 2023 13:36  
 Operator : AJ\MA  
 Sample : PR101023ICV500  
 Misc :  
 ALS Vial : 15 Sample Multiplier: 1

Instrument :  
 ECD\_R  
 ClientSampleId :  
 ICVPR101023

Integration File signal 1: autoint1.e  
 Integration File signal 2: autoint2.e  
 Quant Time: Oct 10 14:17:35 2023  
 Quant Method : Z:\pestpcbsrv\HPCHEM1\ECD\_R\Method\PR101023.M  
 Quant Title : GC EXTRACTABLES  
 QLast Update : Tue Oct 10 14:16:46 2023  
 Response via : Initial Calibration  
 Integrator: ChemStation

Volume Inj. : 2 µl  
 Signal #1 Phase : ZB-MR1 Signal #2 Phase: ZB-MR2  
 Signal #1 Info : 30Mx0.32mmx 0.50µ Signal #2 Info : 30M x 0.32mm x 0.25µm

Compound	RT#1	RT#2	Resp#1	Resp#2	ng/ml	ng/ml
-----						
System Monitoring Compounds						
1) SA Tetrachlo...	3.737	3.027	327.1E6	203.3E6	51.834	52.006
2) SA Decachlor...	9.764	8.436	239.6E6	157.6E6	50.784	51.695
Target Compounds						
3) L1 AR-1016-1	4.980	4.180	107.2E6	72560051	511.695	509.806
4) L1 AR-1016-2	5.003	4.199	160.2E6	100.3E6	514.704	513.253
5) L1 AR-1016-3	5.068	4.382	98011719	55744312	511.683	503.175
6) L1 AR-1016-4	5.171	4.434	77522267	43673841	516.784	498.253
7) L1 AR-1016-5	5.490	4.658	76513705	56167438	515.924	509.397
31) L7 AR-1260-1	6.715	5.778	138.0E6	108.0E6	503.107	504.205
32) L7 AR-1260-2	7.001	5.987	164.1E6	129.5E6	511.875	506.386
33) L7 AR-1260-3	7.395	6.150	101.8E6	119.2E6	519.951	472.975
34) L7 AR-1260-4	7.639	6.668	121.1E6	84928364	498.487	496.806
35) L7 AR-1260-5	7.979	6.937	234.1E6	178.4E6	517.015	484.970

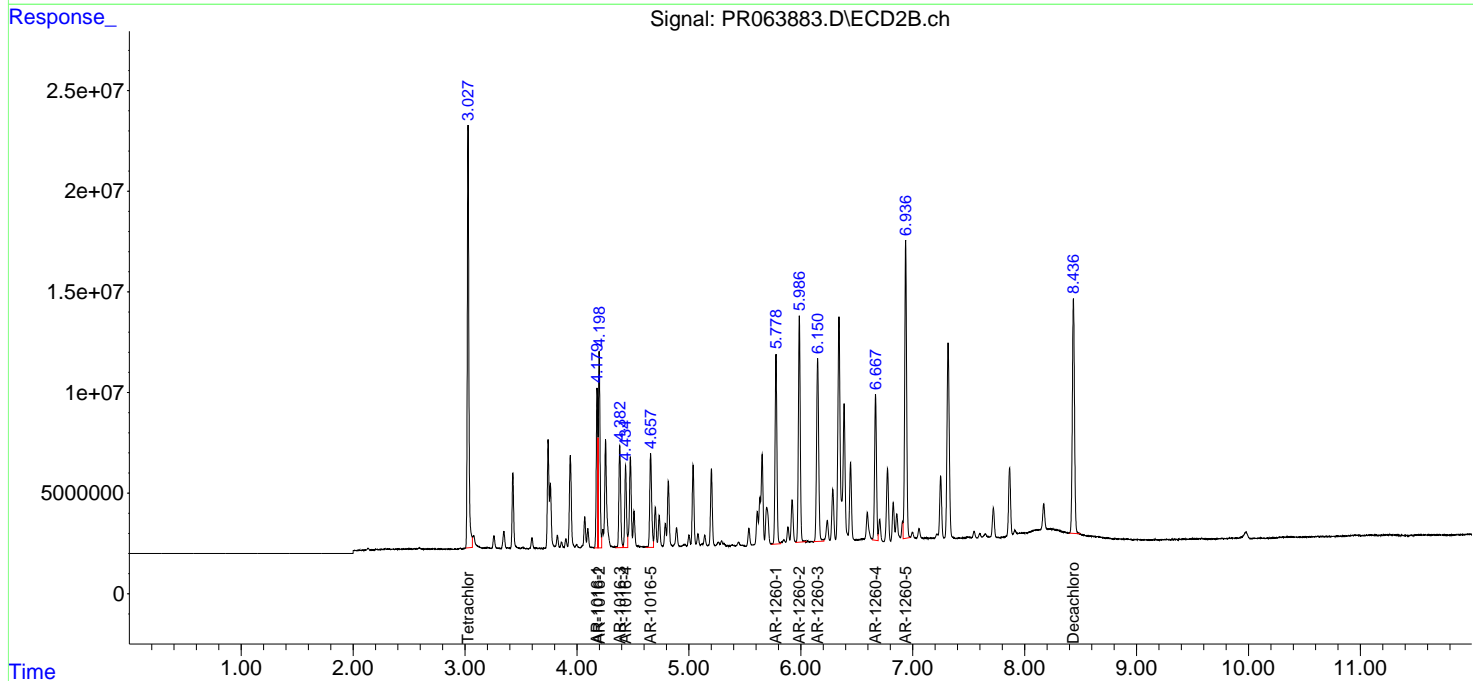
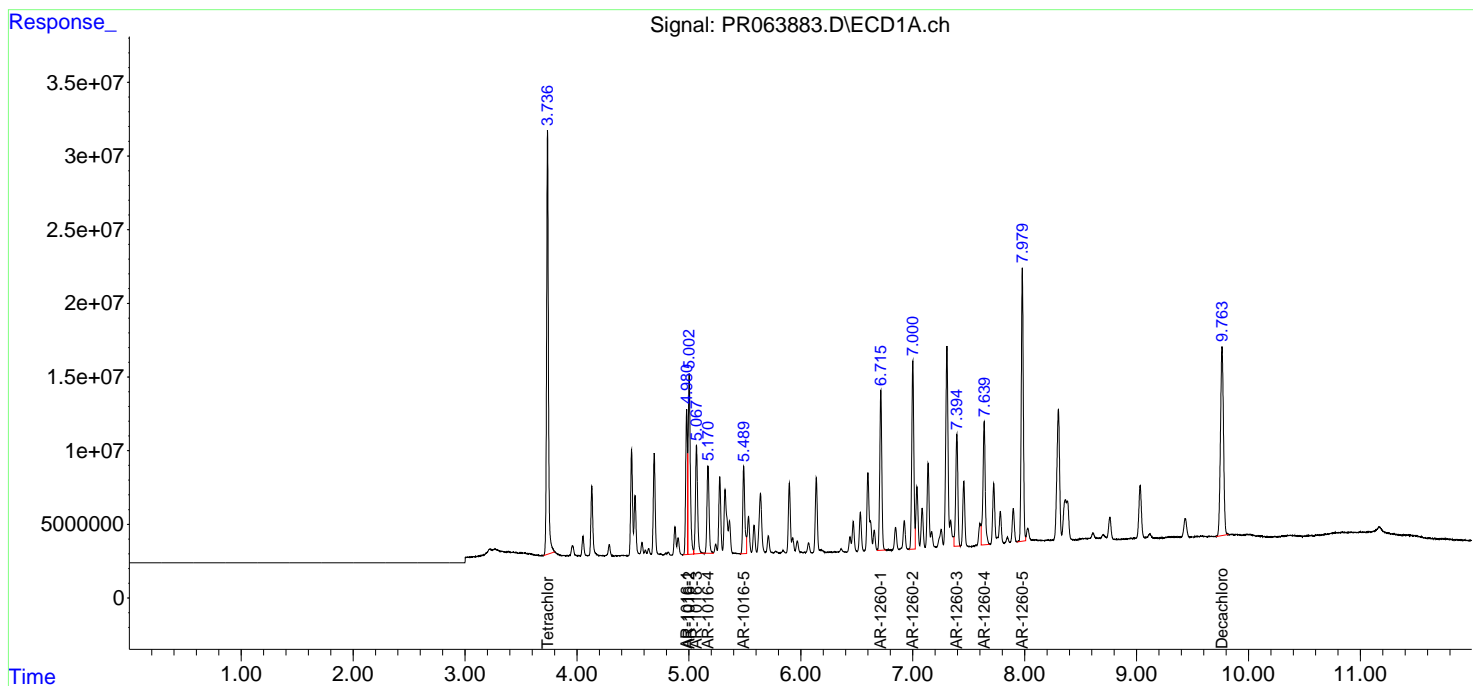
(f)=RT Delta > 1/2 Window (#)=Amounts differ by > 25% (m)=manual int.

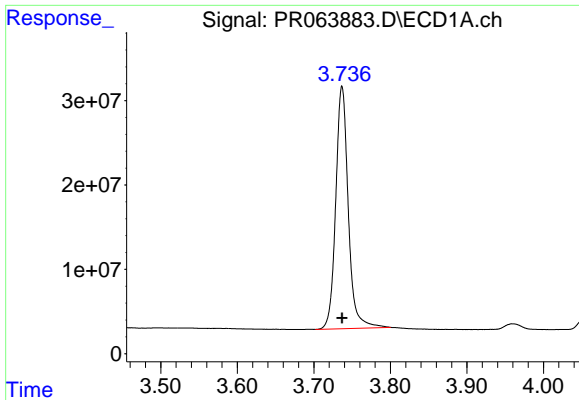
Data Path : Z:\pestpcbsrv\HPCHEM1\ECD\_R\Data\PR101023\  
 Data File : PR063883.D  
 Signal(s) : Signal #1: ECD1A.ch Signal #2: ECD2B.ch  
 Acq On : 10 Oct 2023 13:36  
 Operator : AJ\MA  
 Sample : PR101023ICV500  
 Misc :  
 ALS Vial : 15 Sample Multiplier: 1

Instrument :  
 ECD\_R  
 ClientSampleId :  
 ICVPR101023

Integration File signal 1: autoint1.e  
 Integration File signal 2: autoint2.e  
 Quant Time: Oct 10 14:17:35 2023  
 Quant Method : Z:\pestpcbsrv\HPCHEM1\ECD\_R\Method\PR101023.M  
 Quant Title : GC EXTRACTABLES  
 QLast Update : Tue Oct 10 14:16:46 2023  
 Response via : Initial Calibration  
 Integrator: ChemStation

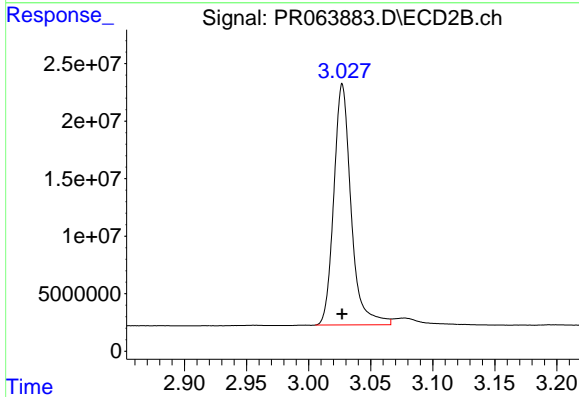
Volume Inj. : 2 µl  
 Signal #1 Phase : ZB-MR1 Signal #2 Phase: ZB-MR2  
 Signal #1 Info : 30Mx0.32mmx 0.50µ Signal #2 Info : 30M x 0.32mm x 0.25µm



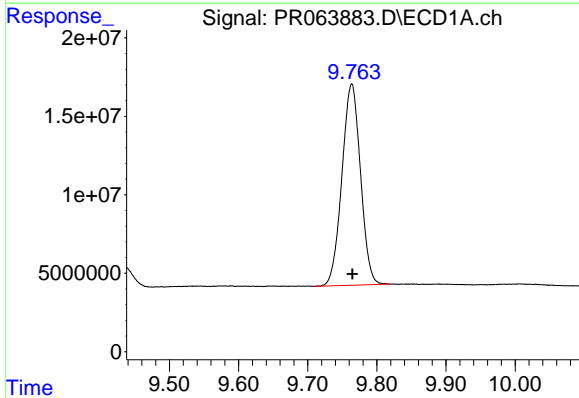


#1 Tetrachloro-m-xylene  
R.T.: 3.737 min  
Delta R.T.: 0.000 min  
Response: 327108692  
Conc: 51.83 ng/ml

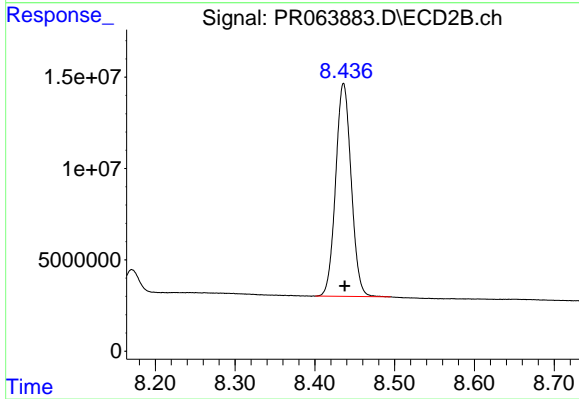
Instrument :  
ECD\_R  
ClientSampleId :  
ICVPR101023



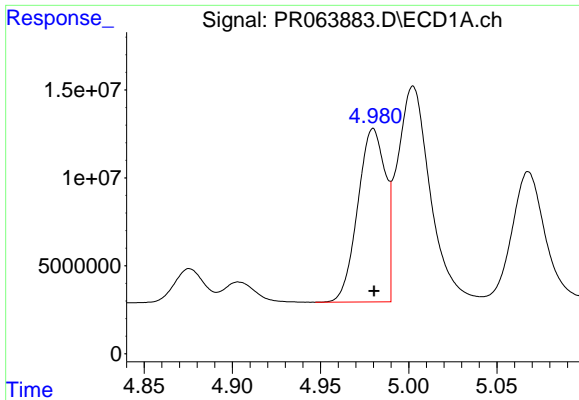
#1 Tetrachloro-m-xylene  
R.T.: 3.027 min  
Delta R.T.: 0.000 min  
Response: 203284528  
Conc: 52.01 ng/ml



#2 Decachlorobiphenyl  
R.T.: 9.764 min  
Delta R.T.: 0.000 min  
Response: 239645197  
Conc: 50.78 ng/ml



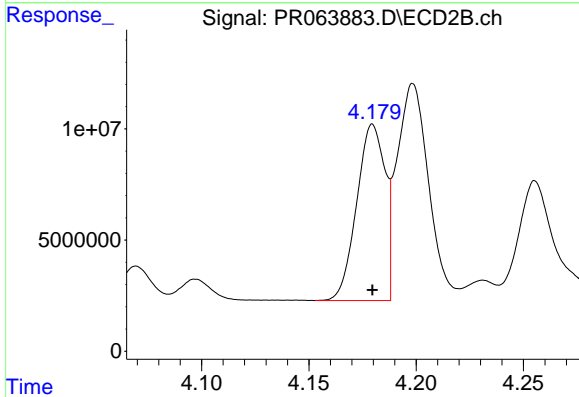
#2 Decachlorobiphenyl  
R.T.: 8.436 min  
Delta R.T.: -0.001 min  
Response: 157597062  
Conc: 51.70 ng/ml



#3 AR-1016-1

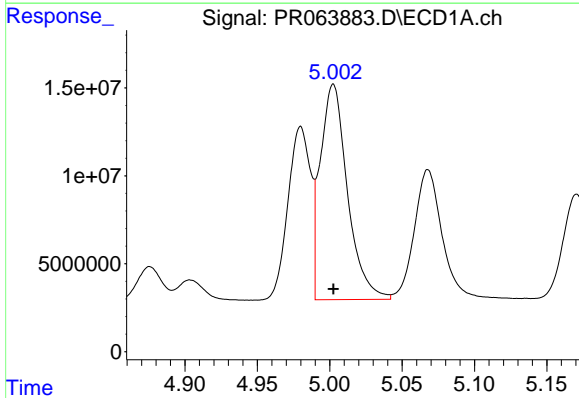
R.T.: 4.980 min  
 Delta R.T.: 0.000 min  
 Response: 107187772  
 Conc: 511.70 ng/ml

Instrument :  
 ECD\_R  
 ClientSampleId :  
 ICVPR101023



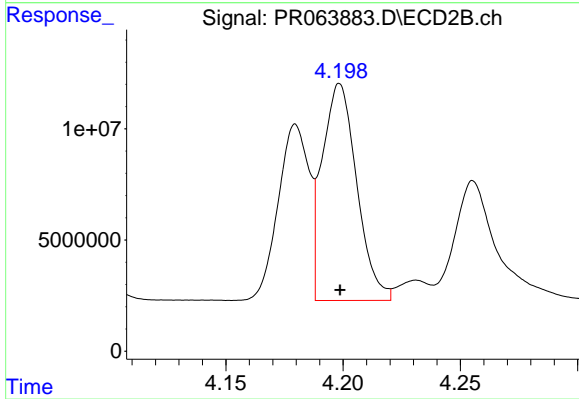
#3 AR-1016-1

R.T.: 4.180 min  
 Delta R.T.: 0.000 min  
 Response: 72560051  
 Conc: 509.81 ng/ml



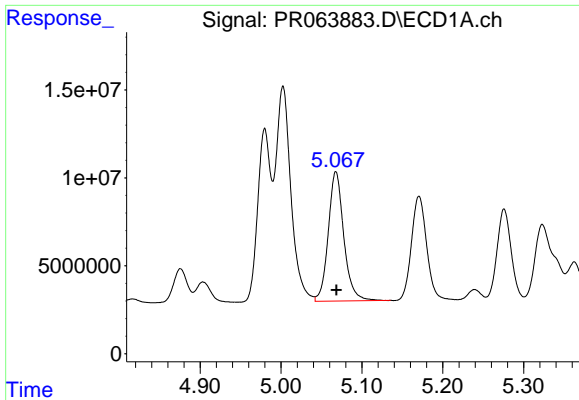
#4 AR-1016-2

R.T.: 5.003 min  
 Delta R.T.: 0.000 min  
 Response: 160171252  
 Conc: 514.70 ng/ml



#4 AR-1016-2

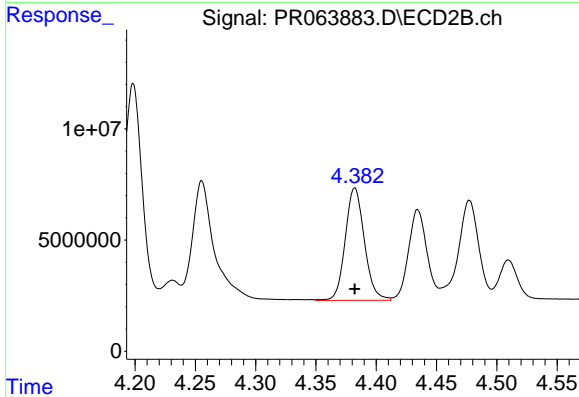
R.T.: 4.199 min  
 Delta R.T.: 0.000 min  
 Response: 100294709  
 Conc: 513.25 ng/ml



#5 AR-1016-3

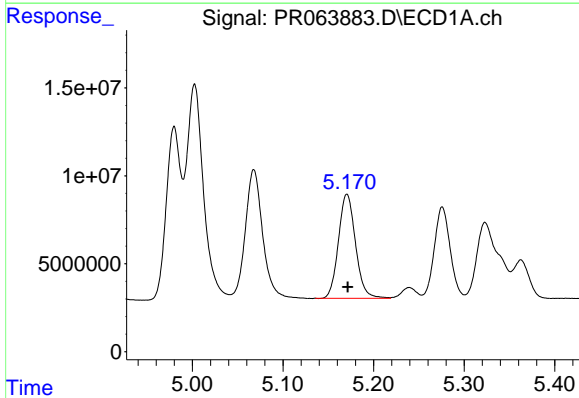
R.T.: 5.068 min  
 Delta R.T.: 0.000 min  
 Response: 98011719  
 Conc: 511.68 ng/ml

Instrument :  
 ECD\_R  
 ClientSampleId :  
 ICVPR101023



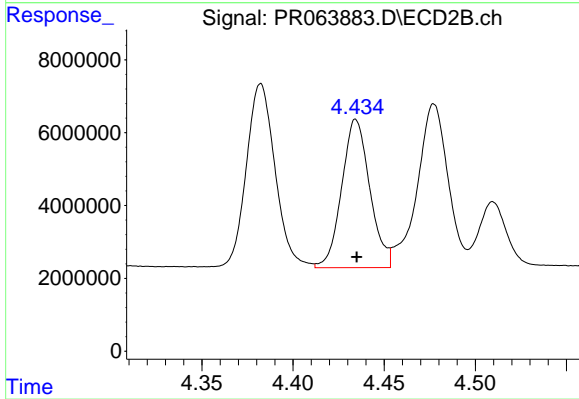
#5 AR-1016-3

R.T.: 4.382 min  
 Delta R.T.: 0.000 min  
 Response: 55744312  
 Conc: 503.18 ng/ml



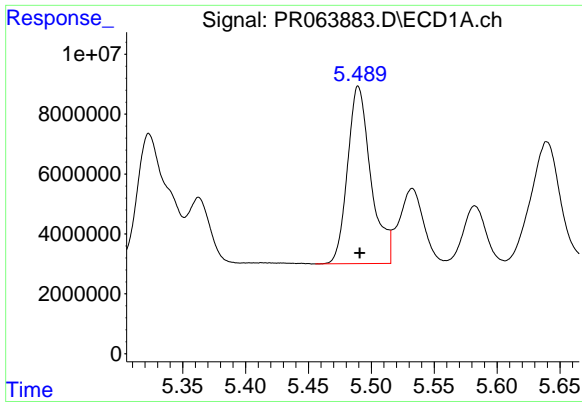
#6 AR-1016-4

R.T.: 5.171 min  
 Delta R.T.: 0.000 min  
 Response: 77522267  
 Conc: 516.78 ng/ml



#6 AR-1016-4

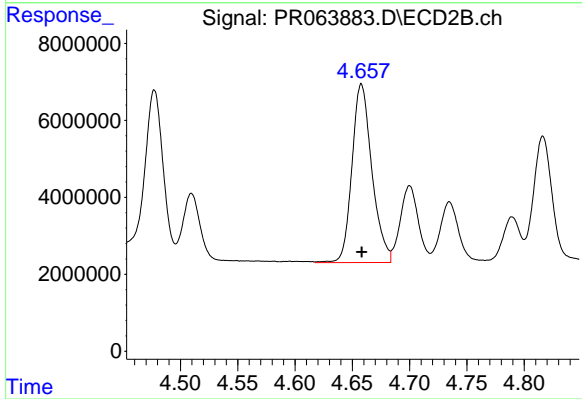
R.T.: 4.434 min  
 Delta R.T.: 0.000 min  
 Response: 43673841  
 Conc: 498.25 ng/ml



#7 AR-1016-5

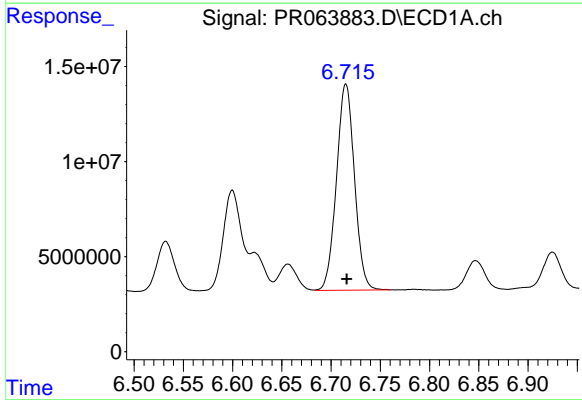
R.T.: 5.490 min  
Delta R.T.: -0.001 min  
Response: 76513705  
Conc: 515.92 ng/ml

Instrument :  
ECD\_R  
ClientSampleId :  
ICVPR101023



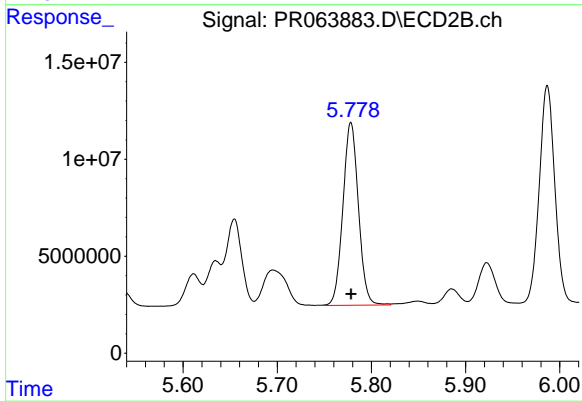
#7 AR-1016-5

R.T.: 4.658 min  
Delta R.T.: 0.000 min  
Response: 56167438  
Conc: 509.40 ng/ml



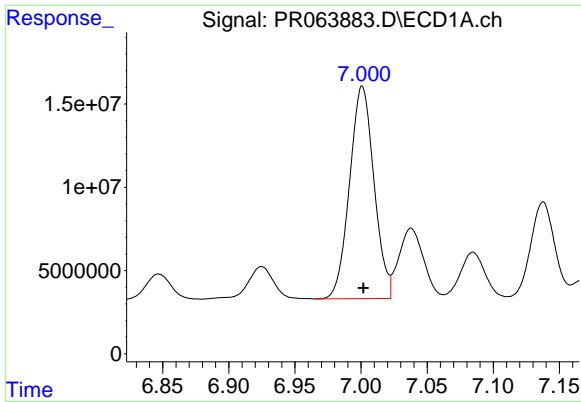
#31 AR-1260-1

R.T.: 6.715 min  
Delta R.T.: 0.000 min  
Response: 138031402  
Conc: 503.11 ng/ml



#31 AR-1260-1

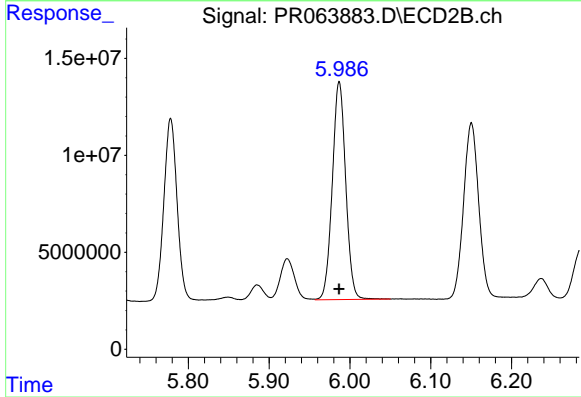
R.T.: 5.778 min  
Delta R.T.: 0.000 min  
Response: 108025052  
Conc: 504.21 ng/ml



#32 AR-1260-2

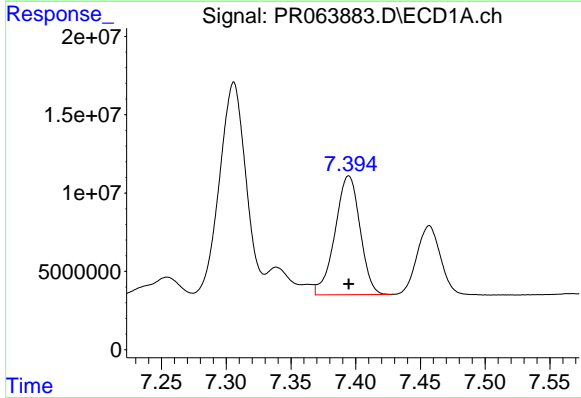
R.T.: 7.001 min  
 Delta R.T.: 0.000 min  
 Response: 164140701  
 Conc: 511.88 ng/ml

Instrument :  
 ECD\_R  
 ClientSampleId :  
 ICVPR101023



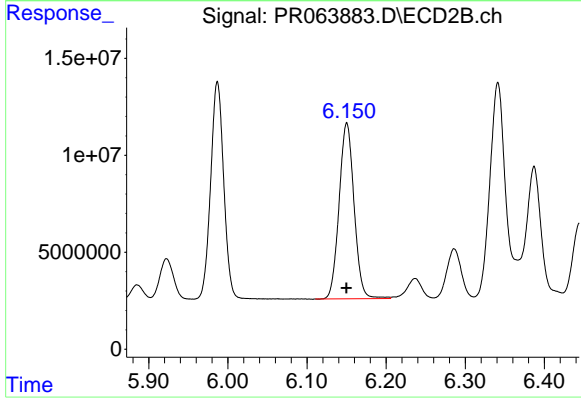
#32 AR-1260-2

R.T.: 5.987 min  
 Delta R.T.: 0.000 min  
 Response: 129504585  
 Conc: 506.39 ng/ml



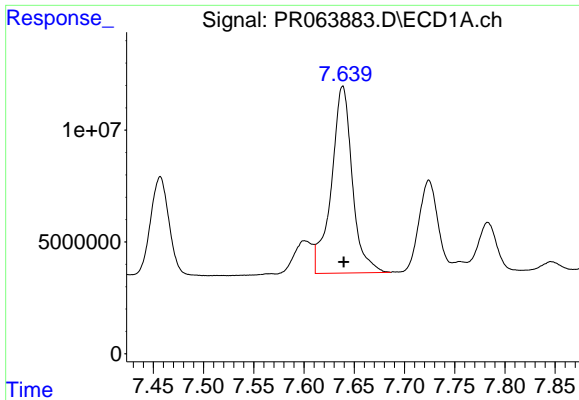
#33 AR-1260-3

R.T.: 7.395 min  
 Delta R.T.: 0.000 min  
 Response: 101782418  
 Conc: 519.95 ng/ml



#33 AR-1260-3

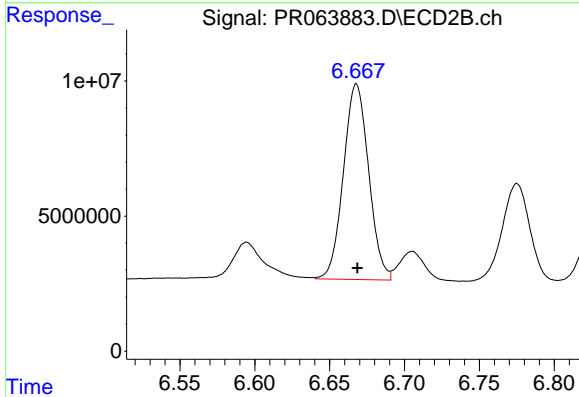
R.T.: 6.150 min  
 Delta R.T.: 0.000 min  
 Response: 119224436  
 Conc: 472.97 ng/ml



#34 AR-1260-4

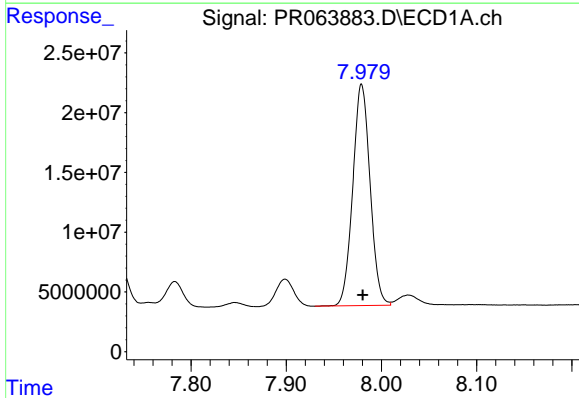
R.T.: 7.639 min  
 Delta R.T.: 0.000 min  
 Response: 121051155  
 Conc: 498.49 ng/ml

Instrument :  
 ECD\_R  
 ClientSampleId :  
 ICVPR101023



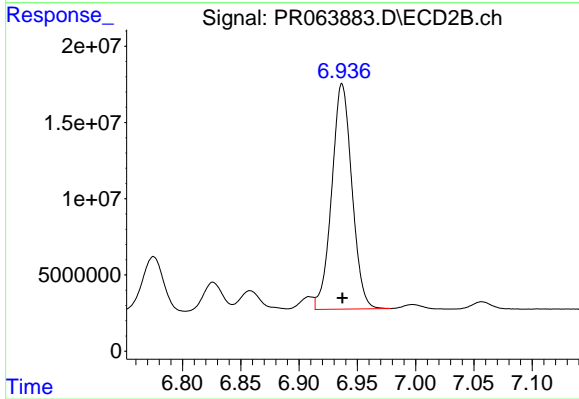
#34 AR-1260-4

R.T.: 6.668 min  
 Delta R.T.: 0.000 min  
 Response: 84928364  
 Conc: 496.81 ng/ml



#35 AR-1260-5

R.T.: 7.979 min  
 Delta R.T.: -0.001 min  
 Response: 234069286  
 Conc: 517.01 ng/ml



#35 AR-1260-5

R.T.: 6.937 min  
 Delta R.T.: 0.000 min  
 Response: 178389869  
 Conc: 484.97 ng/ml