

Data Path : Z:\pestpcbsrv\HPCHEM1\ECD\_R\Data\PR101222\  
 Data File : PR057265.D  
 Signal(s) : Signal #1: ECD1A.ch Signal #2: ECD2B.ch  
 Acq On : 13 Oct 2022 02:15  
 Operator : AJ\MA  
 Sample : AR1254ICC250  
 Misc :  
 ALS Vial : 23 Sample Multiplier: 1

Instrument :  
 ECD\_R  
 ClientSampleId :  
 AR1254ICC250

Integration File signal 1: autoint1.e  
 Integration File signal 2: autoint2.e  
 Quant Time: Oct 13 04:13:08 2022  
 Quant Method : Z:\pestpcbsrv\HPCHEM1\ECD\_R\Method\PR101222.M  
 Quant Title : GC EXTRACTABLES  
 QLast Update : Thu Oct 13 04:05:50 2022  
 Response via : Initial Calibration  
 Integrator: ChemStation

Volume Inj. : 2 µl  
 Signal #1 Phase : ZB-MR1 Signal #2 Phase: ZB-MR2  
 Signal #1 Info : 30Mx0.32mmx 0.50µ Signal #2 Info : 30M x 0.32mm x 0.25µm

Compound	RT#1	RT#2	Resp#1	Resp#2	ng/ml	ng/ml
-----						
System Monitoring Compounds						
1) SA Tetrachlo...	3.612	2.882	85398622	36146567	25.001	24.081
2) SA Decachlor...	9.489	8.078	65654826	45186549	25.216	25.116
Target Compounds						
26) L6 AR-1254-1	5.739	4.807	30883004	17154477	263.871	254.848
27) L6 AR-1254-2	5.975	4.965	45251267	15625772	255.709	258.993
28) L6 AR-1254-3	6.367	5.382	46300652	25631552	256.783	254.289
29) L6 AR-1254-4	6.679	5.626	37153016	17493248	257.917	255.545
30) L6 AR-1254-5	7.134	6.066	38351442	25617773	251.511	251.221
-----						

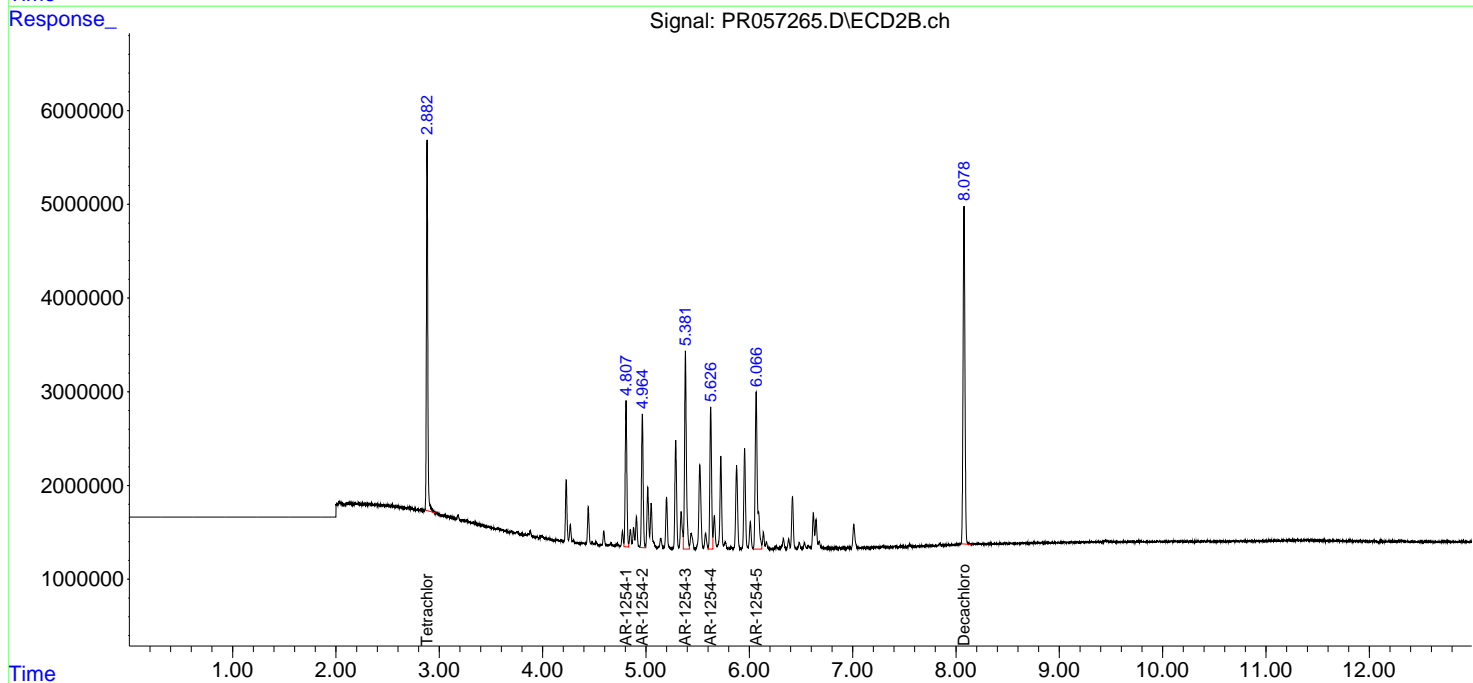
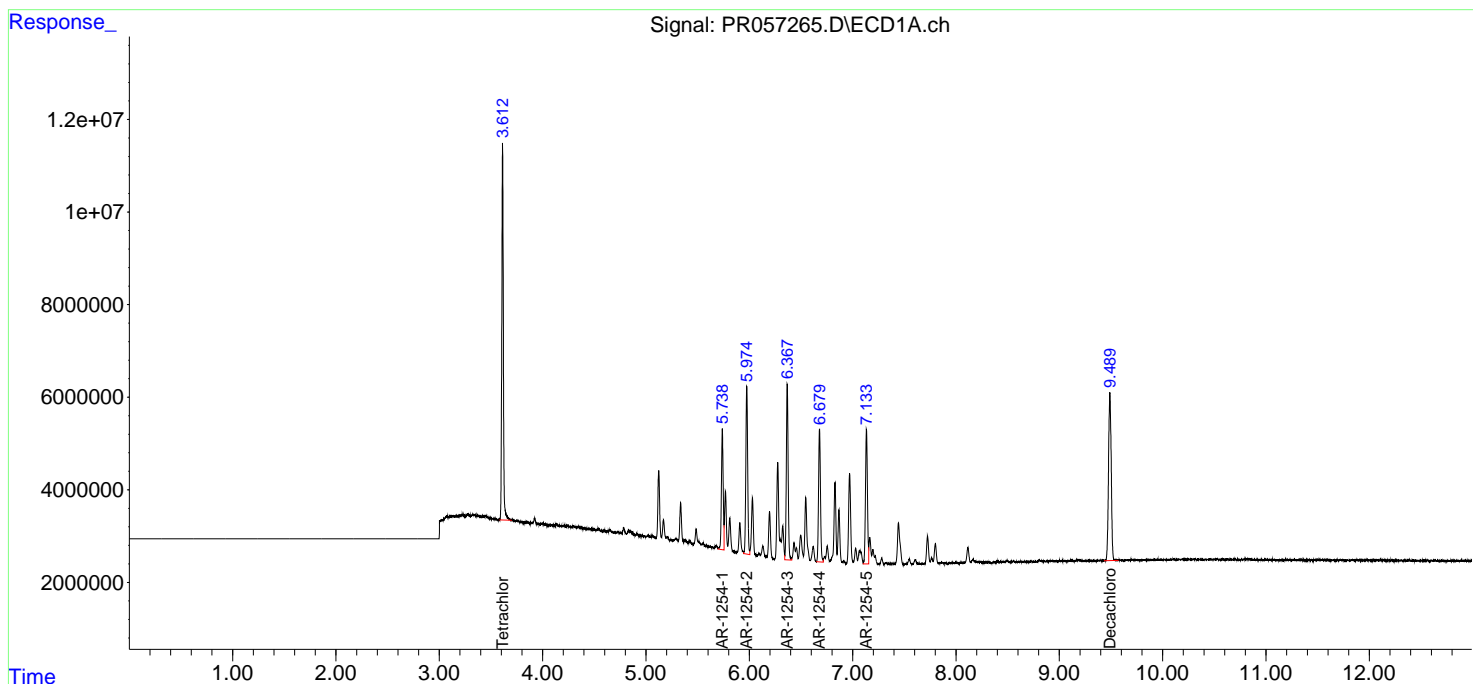
(f)=RT Delta > 1/2 Window (#)=Amounts differ by > 25% (m)=manual int.

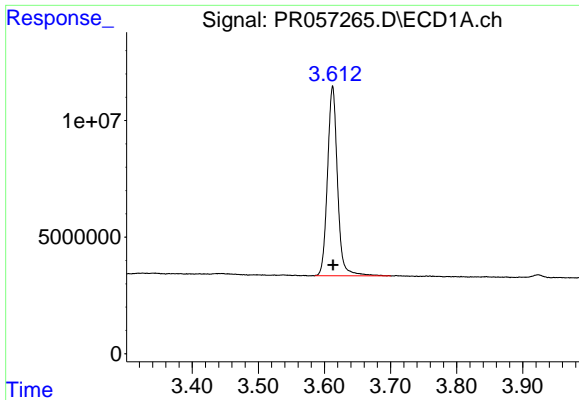
Data Path : Z:\pestpcbsrv\HPCHEM1\ECD\_R\Data\PR101222\  
 Data File : PR057265.D  
 Signal(s) : Signal #1: ECD1A.ch Signal #2: ECD2B.ch  
 Acq On : 13 Oct 2022 02:15  
 Operator : AJ\MA  
 Sample : AR1254ICC250  
 Misc :  
 ALS Vial : 23 Sample Multiplier: 1

Instrument :  
 ECD\_R  
 ClientSampleId :  
 AR1254ICC250

Integration File signal 1: autoint1.e  
 Integration File signal 2: autoint2.e  
 Quant Time: Oct 13 04:13:08 2022  
 Quant Method : Z:\pestpcbsrv\HPCHEM1\ECD\_R\Method\PR101222.M  
 Quant Title : GC EXTRACTABLES  
 QLast Update : Thu Oct 13 04:05:50 2022  
 Response via : Initial Calibration  
 Integrator: ChemStation

Volume Inj. : 2 µl  
 Signal #1 Phase : ZB-MR1 Signal #2 Phase: ZB-MR2  
 Signal #1 Info : 30Mx0.32mmx 0.50µ Signal #2 Info : 30M x 0.32mm x 0.25µm

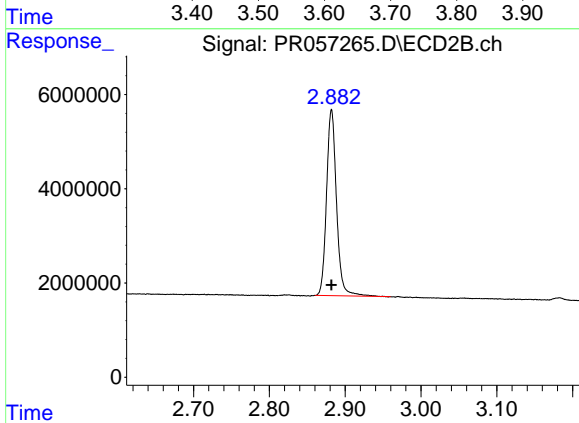




#1 Tetrachloro-m-xylene

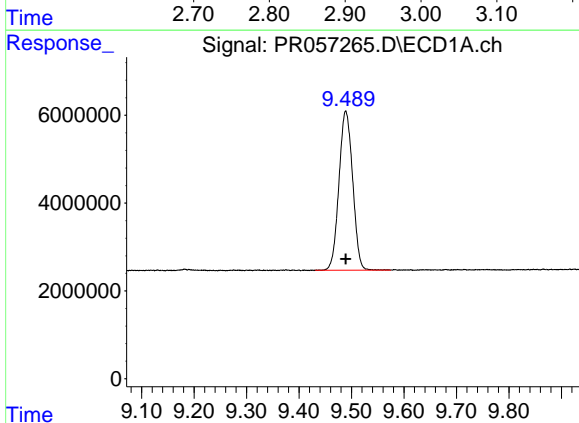
R.T.: 3.612 min  
 Delta R.T.: 0.000 min  
 Response: 85398622  
 Conc: 25.00 ng/ml

Instrument :  
 ECD\_R  
 ClientSampleId :  
 AR1254ICC250



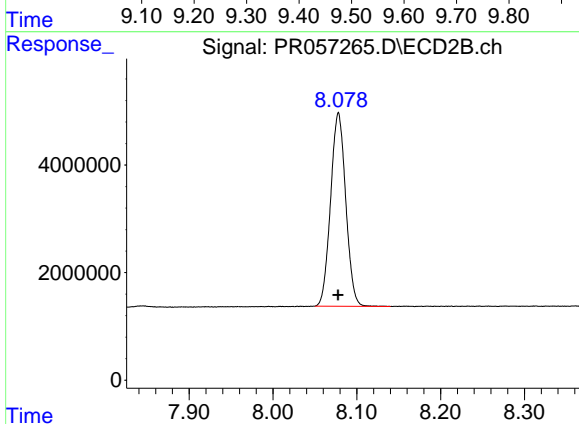
#1 Tetrachloro-m-xylene

R.T.: 2.882 min  
 Delta R.T.: 0.000 min  
 Response: 36146567  
 Conc: 24.08 ng/ml



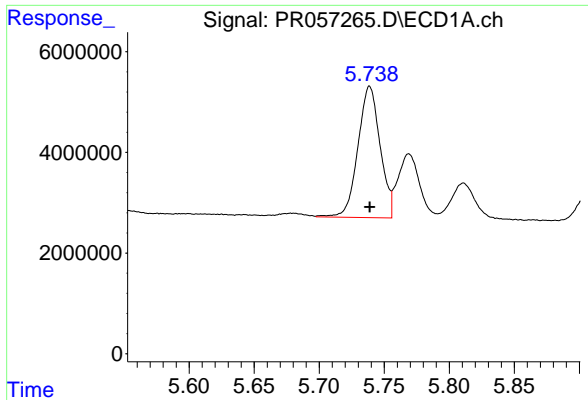
#2 Decachlorobiphenyl

R.T.: 9.489 min  
 Delta R.T.: 0.000 min  
 Response: 65654826  
 Conc: 25.22 ng/ml



#2 Decachlorobiphenyl

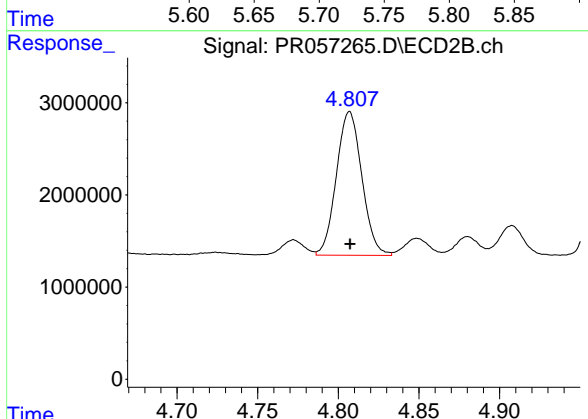
R.T.: 8.078 min  
 Delta R.T.: 0.000 min  
 Response: 45186549  
 Conc: 25.12 ng/ml



#26 AR-1254-1

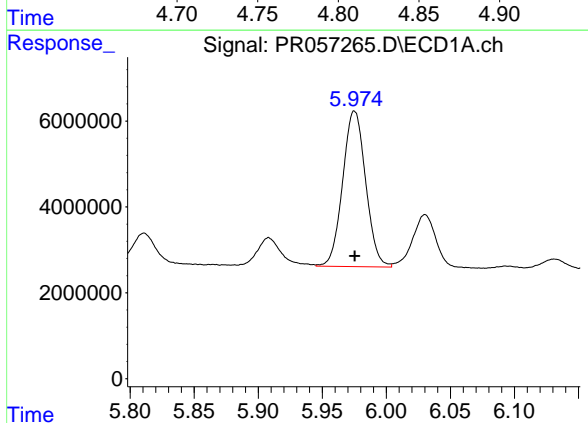
R.T.: 5.739 min  
 Delta R.T.: 0.000 min  
 Response: 30883004  
 Conc: 263.87 ng/ml

Instrument :  
 ECD\_R  
 ClientSampleId :  
 AR1254ICC250



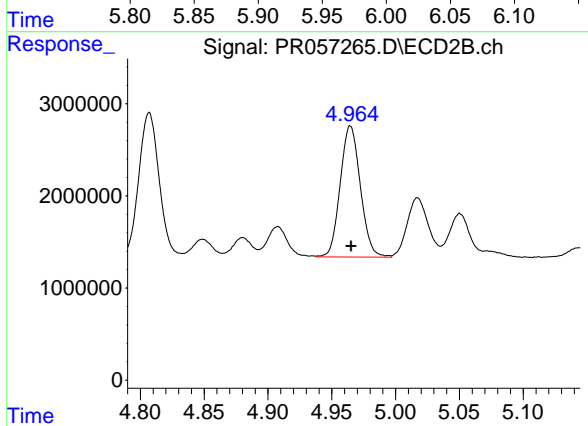
#26 AR-1254-1

R.T.: 4.807 min  
 Delta R.T.: 0.000 min  
 Response: 17154477  
 Conc: 254.85 ng/ml



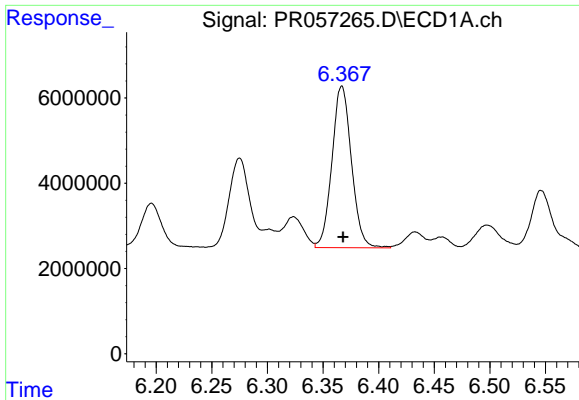
#27 AR-1254-2

R.T.: 5.975 min  
 Delta R.T.: 0.000 min  
 Response: 45251267  
 Conc: 255.71 ng/ml



#27 AR-1254-2

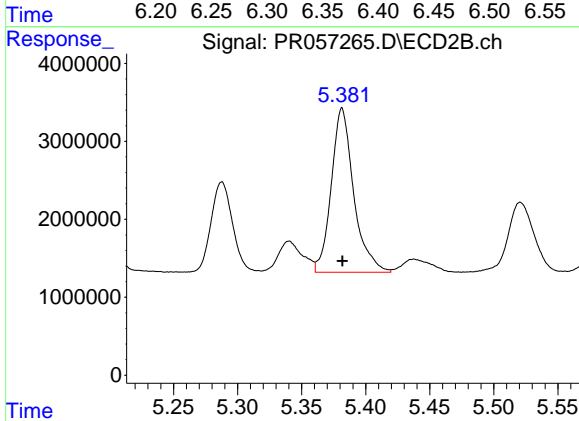
R.T.: 4.965 min  
 Delta R.T.: 0.000 min  
 Response: 15625772  
 Conc: 258.99 ng/ml



#28 AR-1254-3

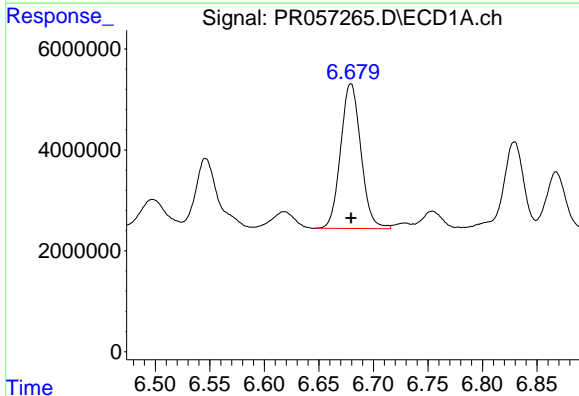
R.T.: 6.367 min  
Delta R.T.: -0.001 min  
Response: 46300652  
Conc: 256.78 ng/ml

Instrument :  
ECD\_R  
ClientSampleId :  
AR1254ICC250



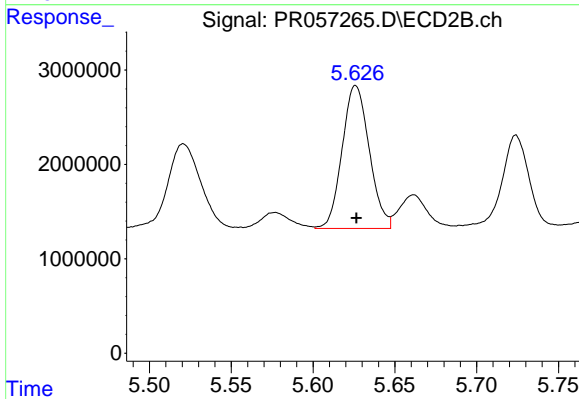
#28 AR-1254-3

R.T.: 5.382 min  
Delta R.T.: 0.000 min  
Response: 25631552  
Conc: 254.29 ng/ml



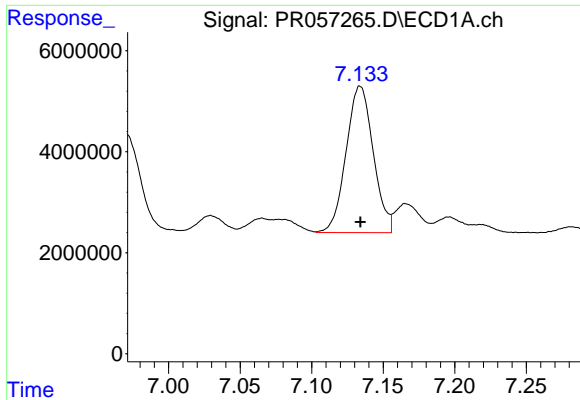
#29 AR-1254-4

R.T.: 6.679 min  
Delta R.T.: 0.000 min  
Response: 37153016  
Conc: 257.92 ng/ml



#29 AR-1254-4

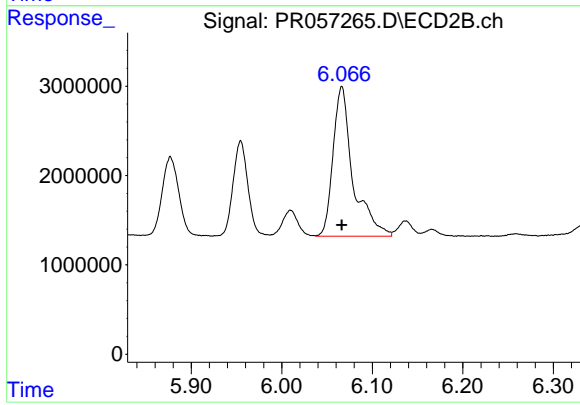
R.T.: 5.626 min  
Delta R.T.: 0.000 min  
Response: 17493248  
Conc: 255.55 ng/ml



#30 AR-1254-5

R.T.: 7.134 min  
Delta R.T.: 0.000 min  
Response: 38351442  
Conc: 251.51 ng/ml

Instrument :  
ECD\_R  
ClientSampleId :  
AR1254ICC250



#30 AR-1254-5

R.T.: 6.066 min  
Delta R.T.: 0.000 min  
Response: 25617773  
Conc: 251.22 ng/ml