

Data Path : Z:\pestpcbsrv\HPCHEM1\ECD_R\Data\PR101223\
 Data File : PR064001.D
 Signal(s) : Signal #1: ECD1A.ch Signal #2: ECD2B.ch
 Acq On : 12 Oct 2023 19:08
 Operator : AJ\MA
 Sample : AR1248ICC100
 Misc :
 ALS Vial : 23 Sample Multiplier: 1

Instrument :
 ECD_R
 ClientSampleId :

Integration File signal 1: autoint1.e
 Integration File signal 2: autoint2.e
 Quant Time: Oct 13 02:04:54 2023
 Quant Method : Z:\pestpcbsrv\HPCHEM1\ECD_R\Method\PR101223CLP.M
 Quant Title : GC EXTRACTABLES
 QLast Update : Fri Oct 13 02:03:09 2023
 Response via : Initial Calibration
 Integrator: ChemStation

Volume Inj. : 1 µl
 Signal #1 Phase : ZB MR1 Signal #2 Phase: ZB MR2
 Signal #1 Info : 30Mx0.32mmx 0.5µm Signal #2 Info : 30M x 0.32mm x 0.25µm

Compound	RT#1	RT#2	Resp#1	Resp#2	ng/ml	ng/ml

System Monitoring Compounds						
1) SA Tetrachlo...	3.736	3.025	37955187	23389569	5.553	5.708
2) SA Decachlor...	9.760	8.426	54142221	35248611	11.575	11.616
Target Compounds						
21) L5 AR-1248-1	4.979	4.176	16165163	11248526	120.297	122.617
22) L5 AR-1248-2	5.274	4.430	22877329	15531615	119.243	122.539
23) L5 AR-1248-3	5.489	4.473	26371664	15973603	116.523	121.115
24) L5 AR-1248-4	5.927	4.653	28301008	18748899	115.891	118.701
25) L5 AR-1248-5	5.967	5.076	28959065	17218180	116.296	115.894

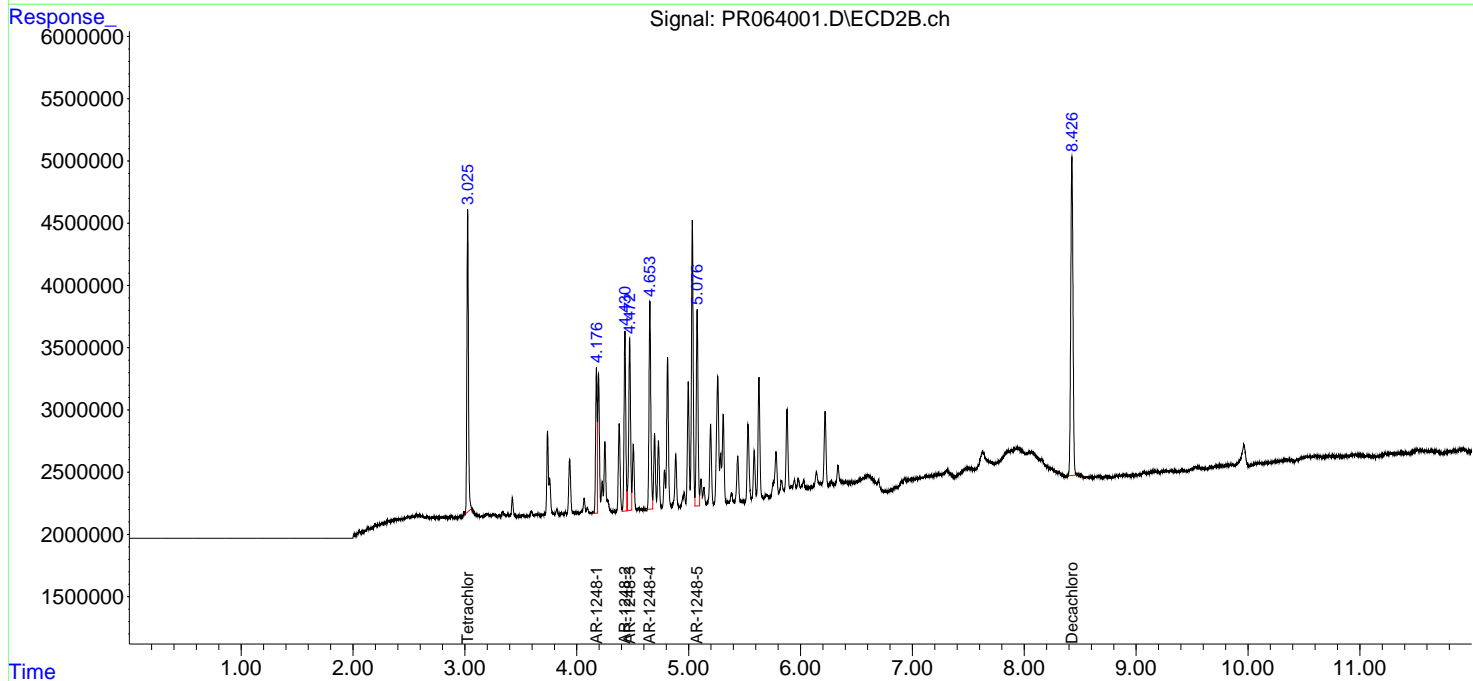
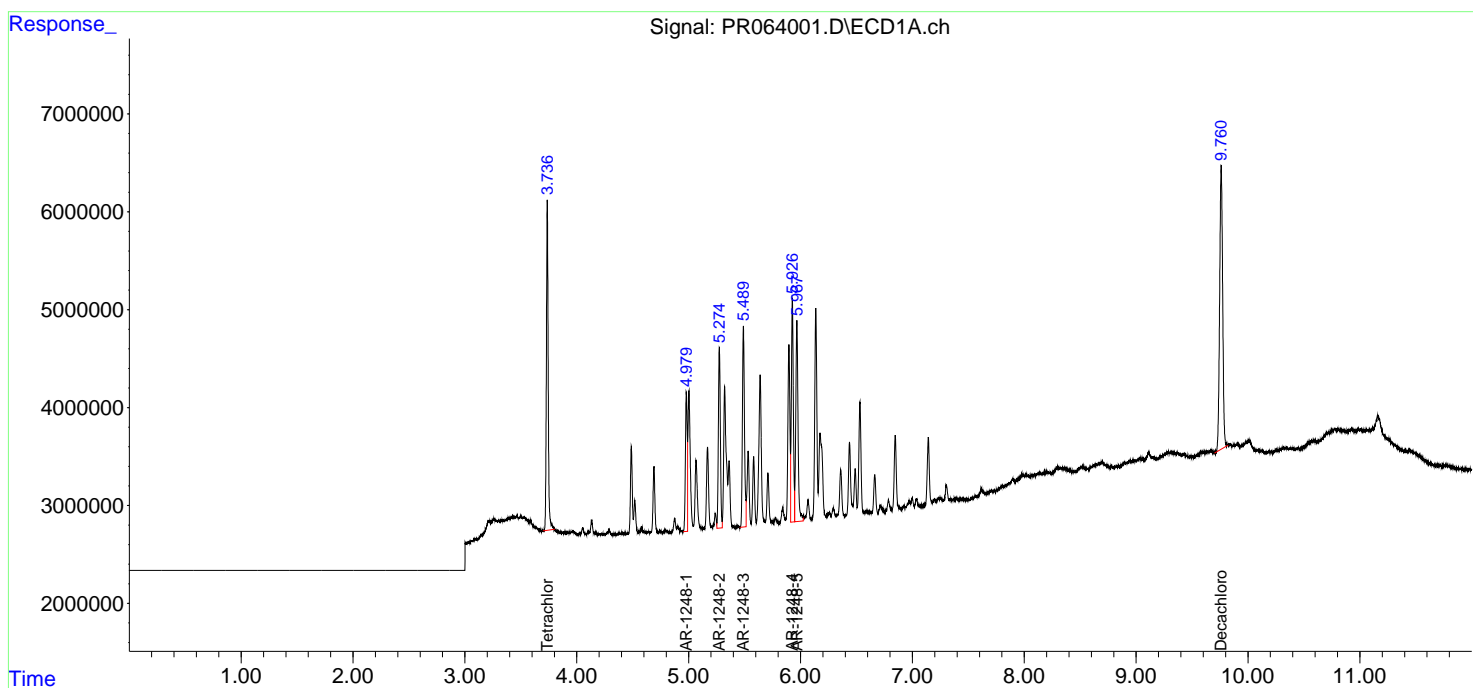
(f)=RT Delta > 1/2 Window (#)=Amounts differ by > 25% (m)=manual int.

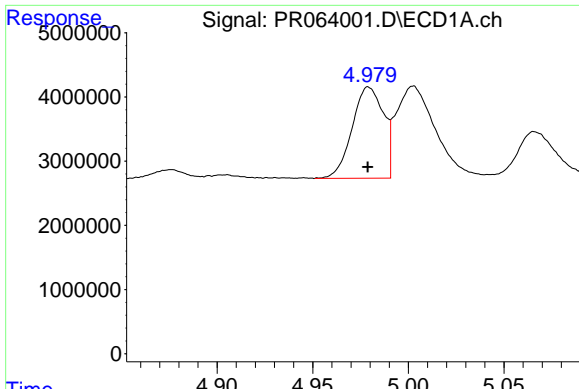
Data Path : Z:\pestpcbsrv\HPCHEM1\ECD_R\Data\PR101223\
 Data File : PR064001.D
 Signal(s) : Signal #1: ECD1A.ch Signal #2: ECD2B.ch
 Acq On : 12 Oct 2023 19:08
 Operator : AJ\MA
 Sample : AR1248ICC100
 Misc :
 ALS Vial : 23 Sample Multiplier: 1

Instrument :
 ECD_R
 ClientSampleId :

Integration File signal 1: autoint1.e
 Integration File signal 2: autoint2.e
 Quant Time: Oct 13 02:04:54 2023
 Quant Method : Z:\pestpcbsrv\HPCHEM1\ECD_R\Method\PR101223CLP.M
 Quant Title : GC EXTRACTABLES
 QLast Update : Fri Oct 13 02:03:09 2023
 Response via : Initial Calibration
 Integrator: ChemStation

Volume Inj. : 1 µl
 Signal #1 Phase : ZB MR1 Signal #2 Phase: ZB MR2
 Signal #1 Info : 30Mx0.32mmx 0.5µm Signal #2 Info : 30M x 0.32mm x 0.25µm

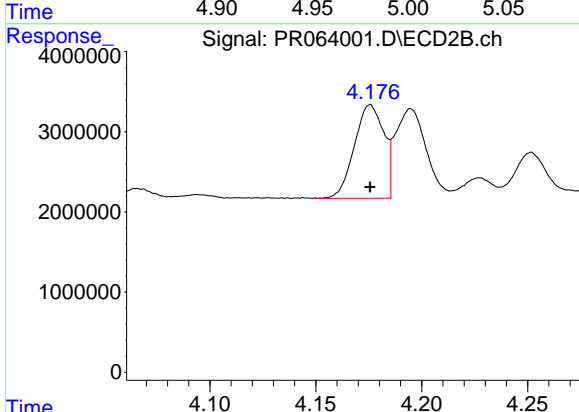




#21 AR-1248-1

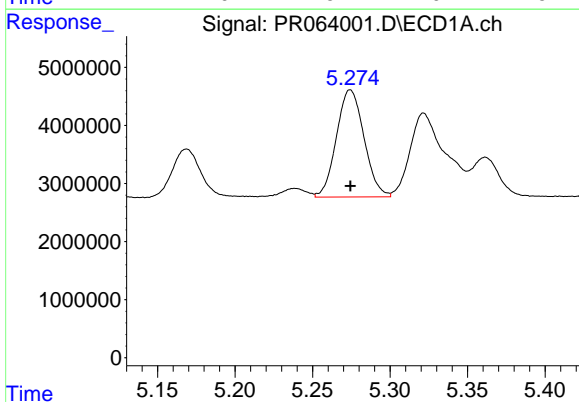
R.T.: 4.979 min
 Delta R.T.: 0.000 min
 Response: 16165163
 Conc: 120.30 ng/ml

Instrument :
 ECD_R
 ClientSampleId :



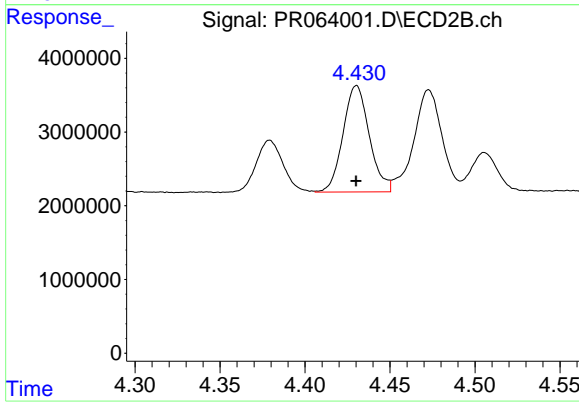
#21 AR-1248-1

R.T.: 4.176 min
 Delta R.T.: 0.000 min
 Response: 11248526
 Conc: 122.62 ng/ml



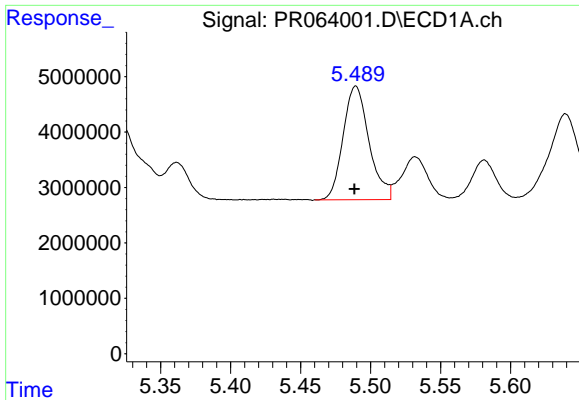
#22 AR-1248-2

R.T.: 5.274 min
 Delta R.T.: 0.000 min
 Response: 22877329
 Conc: 119.24 ng/ml



#22 AR-1248-2

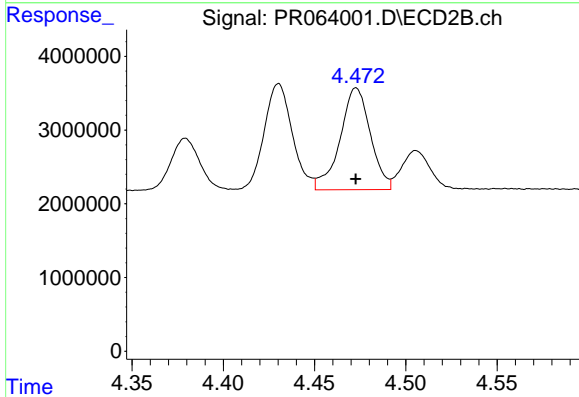
R.T.: 4.430 min
 Delta R.T.: 0.000 min
 Response: 15531615
 Conc: 122.54 ng/ml



#23 AR-1248-3

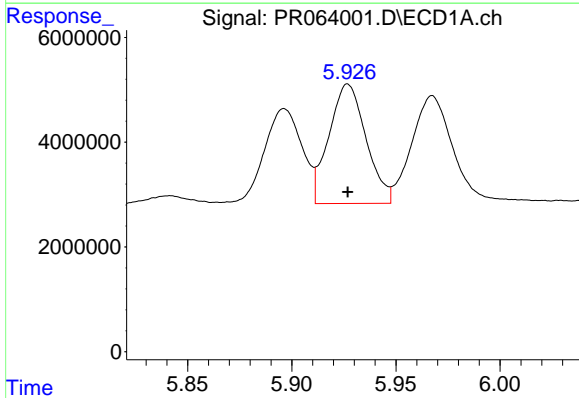
R.T.: 5.489 min
 Delta R.T.: 0.000 min
 Response: 26371664
 Conc: 116.52 ng/ml

Instrument :
 ECD_R
 ClientSampleId :



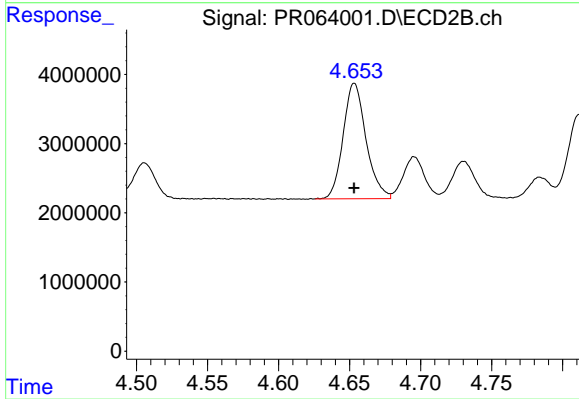
#23 AR-1248-3

R.T.: 4.473 min
 Delta R.T.: 0.000 min
 Response: 15973603
 Conc: 121.12 ng/ml



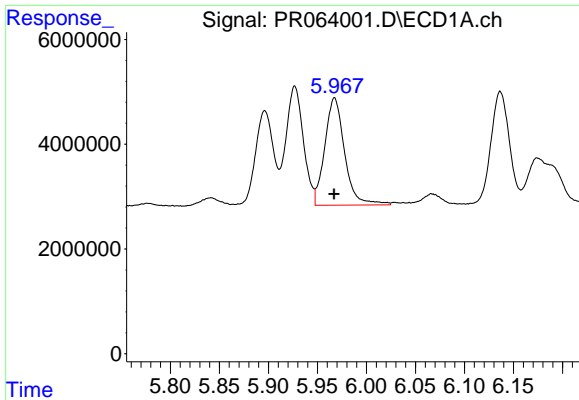
#24 AR-1248-4

R.T.: 5.927 min
 Delta R.T.: 0.000 min
 Response: 28301008
 Conc: 115.89 ng/ml



#24 AR-1248-4

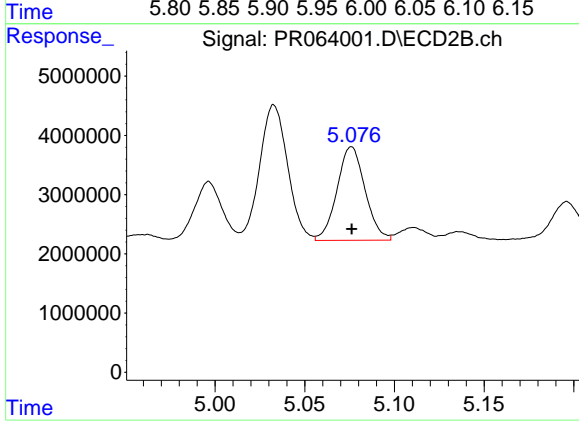
R.T.: 4.653 min
 Delta R.T.: 0.000 min
 Response: 18748899
 Conc: 118.70 ng/ml



#25 AR-1248-5

R.T.: 5.967 min
Delta R.T.: 0.000 min
Response: 28959065
Conc: 116.30 ng/ml

Instrument :
ECD_R
ClientSampleId :



#25 AR-1248-5

R.T.: 5.076 min
Delta R.T.: 0.000 min
Response: 17218180
Conc: 115.89 ng/ml