

Data Path : Z:\pestpcbsrv\HPCHEM1\ECD_R\Data\PR101719\
 Data File : PR042270.D
 Signal(s) : Signal #1: ECD1A.ch Signal #2: ECD2B.ch
 Acq On : 16 Oct 2019 15:52
 Operator : SM\AJ
 Sample : AR1660ICC500
 Misc :
 ALS Vial : 5 Sample Multiplier: 1

Instrument :
 ECD_R
 ClientSampleId :
 AR1660ICC500

Integration File signal 1: autoint1.e
 Integration File signal 2: autoint2.e
 Quant Time: Oct 17 04:48:36 2019
 Quant Method : Z:\pestpcbsrv\HPCHEM1\ECD_R\Method\PR101719.M
 Quant Title : GC EXTRACTABLES
 QLast Update : Thu Oct 17 04:47:29 2019
 Response via : Initial Calibration
 Integrator: ChemStation

Volume Inj. : 2 µl
 Signal #1 Phase : ZB-MR1 Signal #2 Phase: ZB-MR2
 Signal #1 Info : 30Mx0.32mmx 0.50µ Signal #2 Info : 30M x 0.32mm x 0.25µm

Compound	RT#1	RT#2	Resp#1	Resp#2	ng/ml	ng/ml

System Monitoring Compounds						
1) SA Tetrachlo...	4.724	3.985	229.0E6	814.7E6	50.000	50.000
2) SA Decachlor...	10.647	9.097	169.0E6	493.9E6	50.000	50.000
Target Compounds						
3) L1 AR-1016-1	5.903	5.083	72521600	248.0E6	500.000	500.000
4) L1 AR-1016-2	5.925	5.103	104.8E6	339.6E6	500.000	500.000
5) L1 AR-1016-3	5.988	5.282	61407772	154.1E6	500.000	500.000
6) L1 AR-1016-4	6.088	5.321	51182623	120.5E6	500.000	500.000
7) L1 AR-1016-5	6.383	5.538	50482530	139.0E6	500.000	500.000
31) L7 AR-1260-1	7.510	6.576	97499047	273.7E6	500.000	500.000
32) L7 AR-1260-2	7.765	6.762	117.8E6	377.5E6	500.000	500.000
33) L7 AR-1260-3	8.127	6.919	88344533	322.1E6	500.000	500.000
34) L7 AR-1260-4	8.366	7.392	101.8E6	269.6E6	500.000	500.000
35) L7 AR-1260-5	8.705	7.632	209.0E6	732.3E6	500.000	500.000

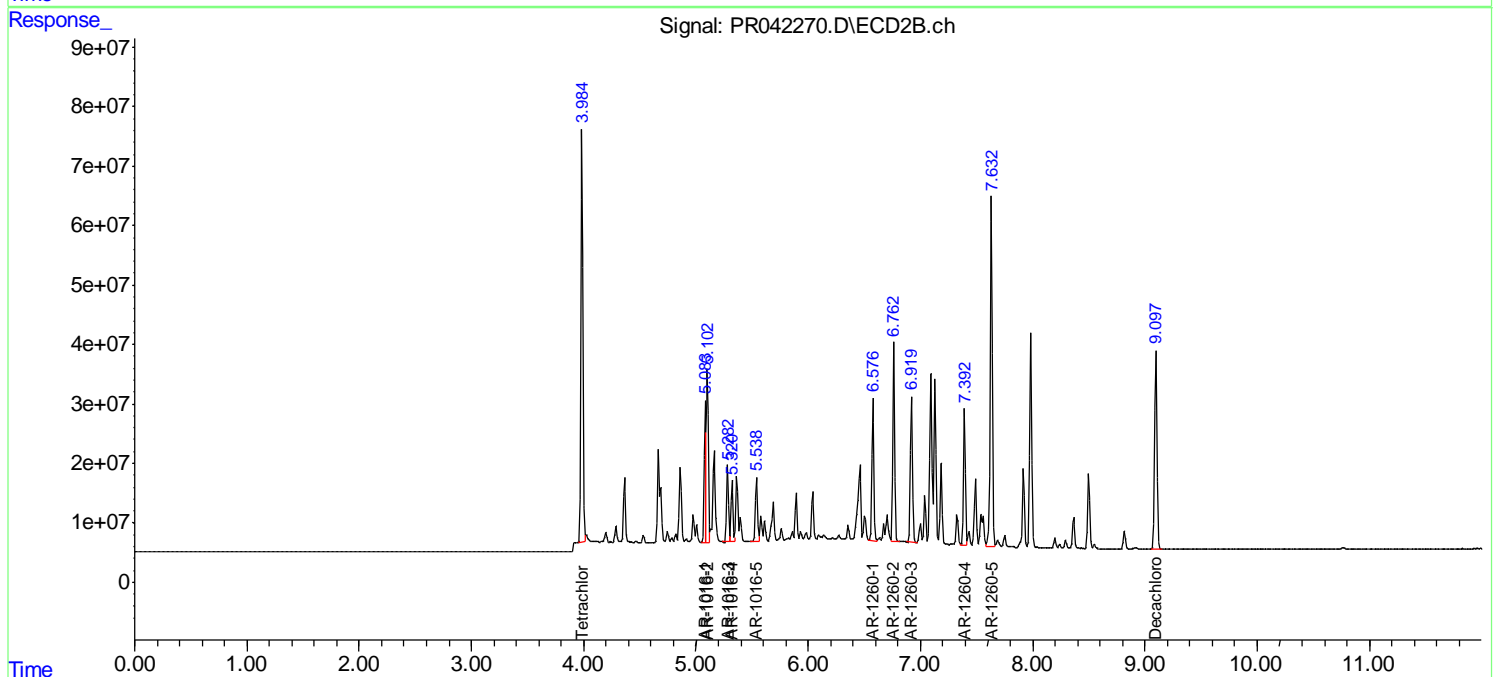
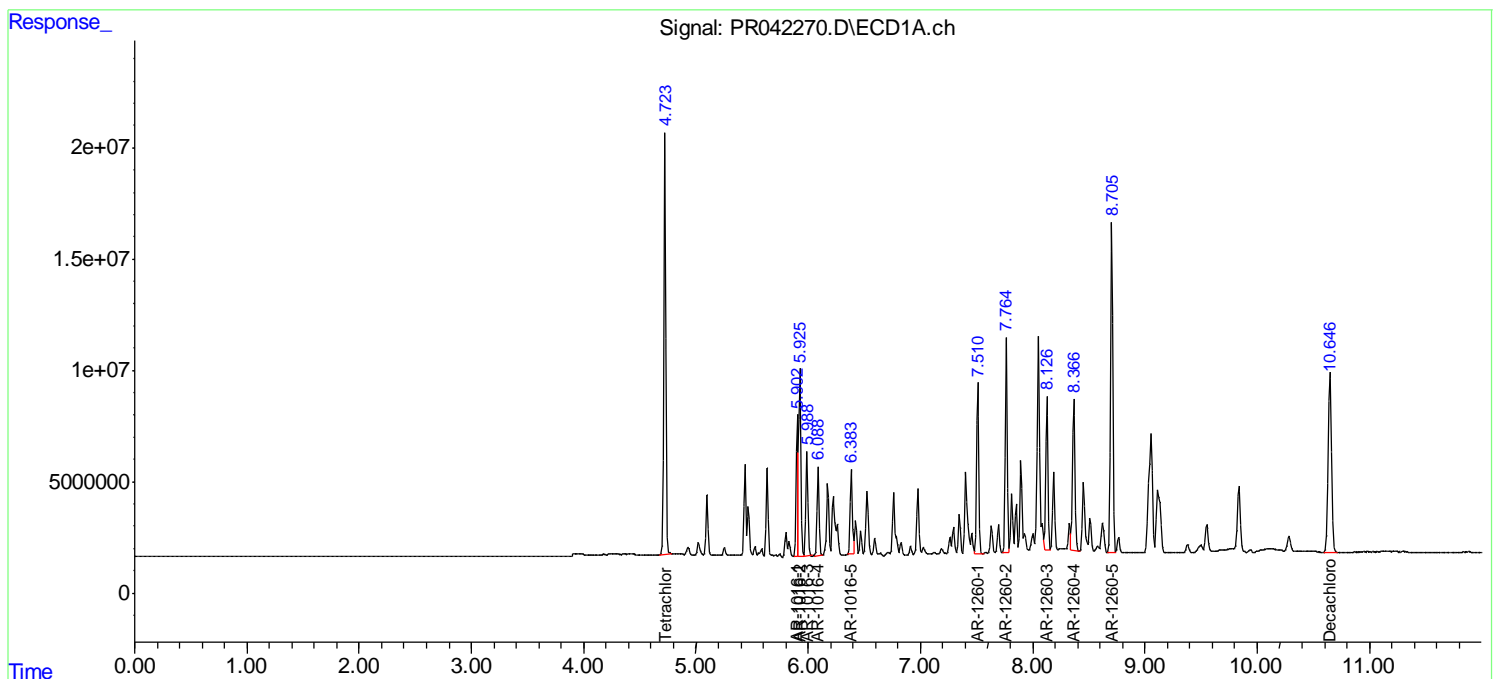
(f)=RT Delta > 1/2 Window (#)=Amounts differ by > 25% (m)=manual int.

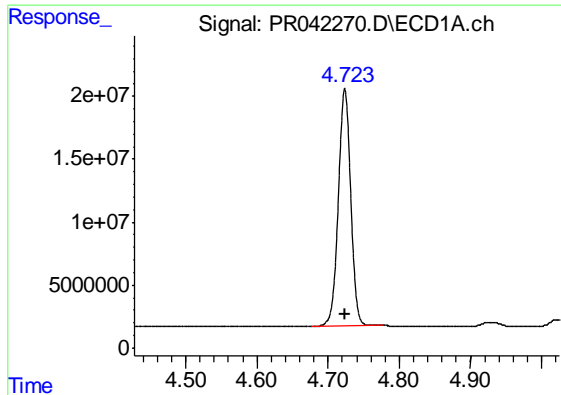
Data Path : Z:\pestpcbsrv\HPCHEM1\ECD_R\Data\PR101719\
 Data File : PR042270.D
 Signal(s) : Signal #1: ECD1A.ch Signal #2: ECD2B.ch
 Acq On : 16 Oct 2019 15:52
 Operator : SM\AJ
 Sample : AR1660ICC500
 Misc :
 ALS Vial : 5 Sample Multiplier: 1

Instrument :
 ECD_R
 ClientSampled :
 AR1660ICC500

Integration File signal 1: autoint1.e
 Integration File signal 2: autoint2.e
 Quant Time: Oct 17 04:48:36 2019
 Quant Method : Z:\pestpcbsrv\HPCHEM1\ECD_R\Method\PR101719.M
 Quant Title : GC EXTRACTABLES
 QLast Update : Thu Oct 17 04:47:29 2019
 Response via : Initial Calibration
 Integrator: ChemStation

Volume Inj. : 2 µl
 Signal #1 Phase : ZB-MR1 Signal #2 Phase: ZB-MR2
 Signal #1 Info : 30Mx0.32mmx 0.50µ Signal #2 Info : 30M x 0.32mm x 0.25µm

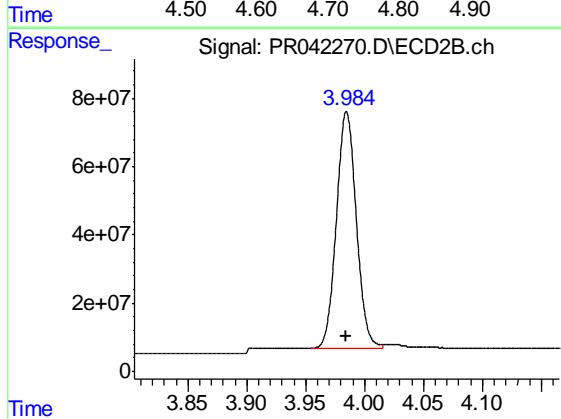




#1 Tetrachloro-m-xylene

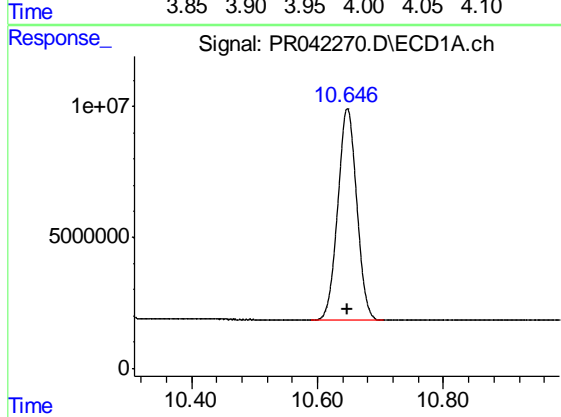
R.T.: 4.724 min
 Delta R.T.: 0.000 min
 Response: 229001246
 Conc: 50.00 ng/ml

Instrument :
 ECD_R
 ClientSampleId :
 AR1660ICC500



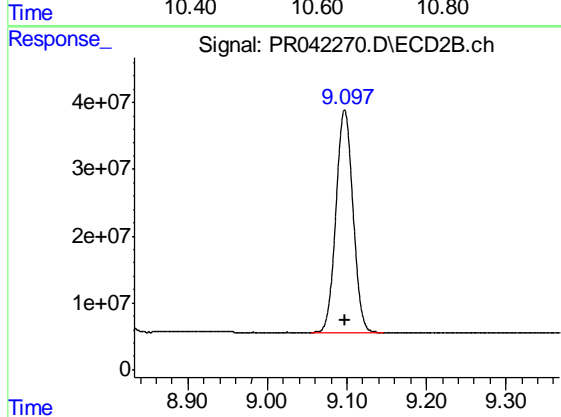
#1 Tetrachloro-m-xylene

R.T.: 3.985 min
 Delta R.T.: 0.000 min
 Response: 814657802
 Conc: 50.00 ng/ml



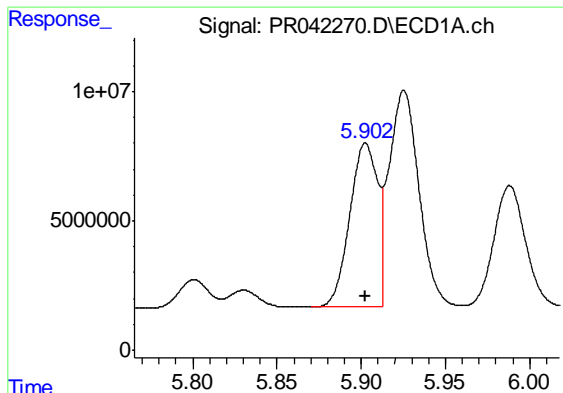
#2 Decachlorobiphenyl

R.T.: 10.647 min
 Delta R.T.: 0.000 min
 Response: 168971181
 Conc: 50.00 ng/ml



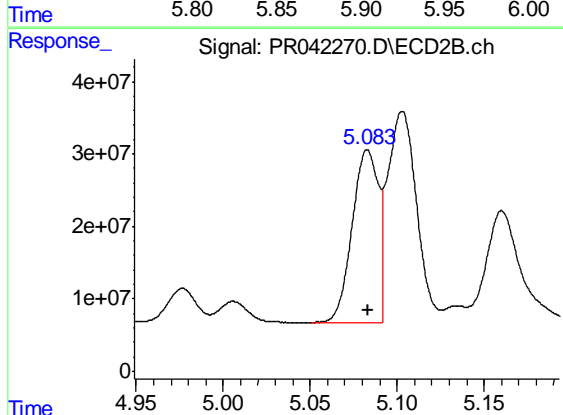
#2 Decachlorobiphenyl

R.T.: 9.097 min
 Delta R.T.: 0.000 min
 Response: 493936910
 Conc: 50.00 ng/ml

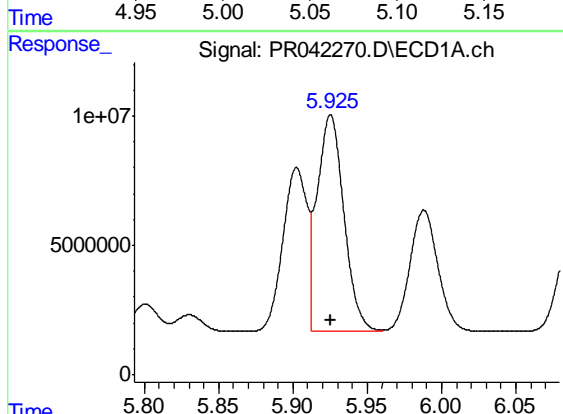


#3 AR-1016-1
 R.T.: 5.903 min
 Delta R.T.: 0.000 min
 Response: 72521600
 Conc: 500.00 ng/ml

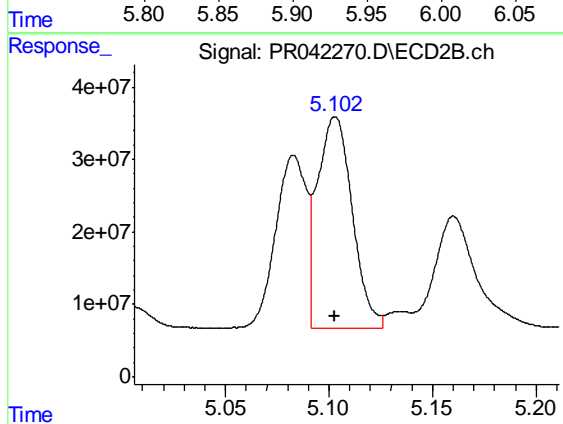
Instrument :
 ECD_R
 ClientSampleId :
 AR1660ICC500



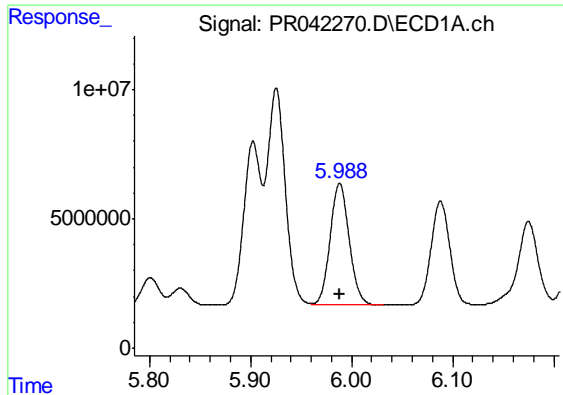
#3 AR-1016-1
 R.T.: 5.083 min
 Delta R.T.: 0.000 min
 Response: 248043663
 Conc: 500.00 ng/ml



#4 AR-1016-2
 R.T.: 5.925 min
 Delta R.T.: 0.000 min
 Response: 104764712
 Conc: 500.00 ng/ml



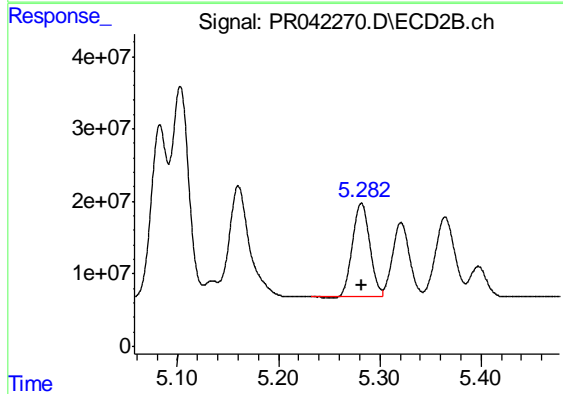
#4 AR-1016-2
 R.T.: 5.103 min
 Delta R.T.: 0.000 min
 Response: 339624458
 Conc: 500.00 ng/ml



#5 AR-1016-3

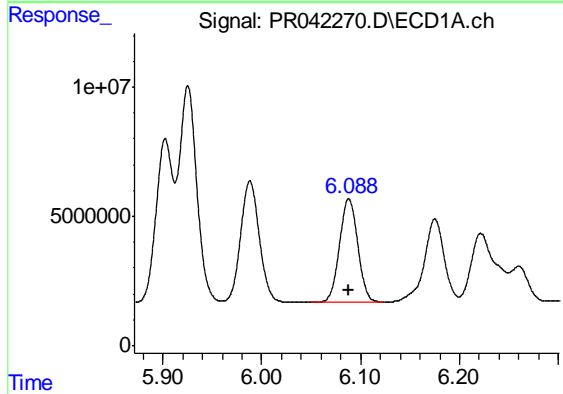
R.T.: 5.988 min
 Delta R.T.: 0.000 min
 Response: 61407772
 Conc: 500.00 ng/ml

Instrument :
 ECD_R
ClientSampleId :
 AR1660ICC500



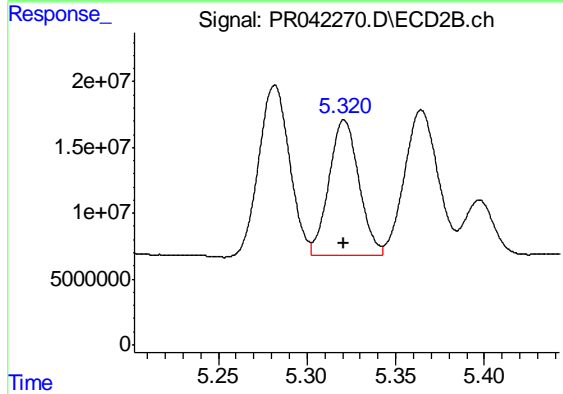
#5 AR-1016-3

R.T.: 5.282 min
 Delta R.T.: 0.000 min
 Response: 154104563
 Conc: 500.00 ng/ml



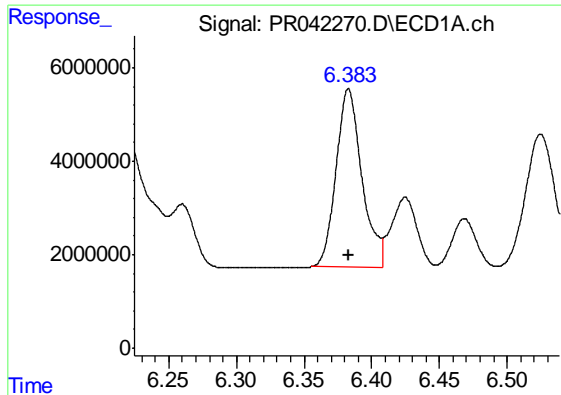
#6 AR-1016-4

R.T.: 6.088 min
 Delta R.T.: 0.000 min
 Response: 51182623
 Conc: 500.00 ng/ml



#6 AR-1016-4

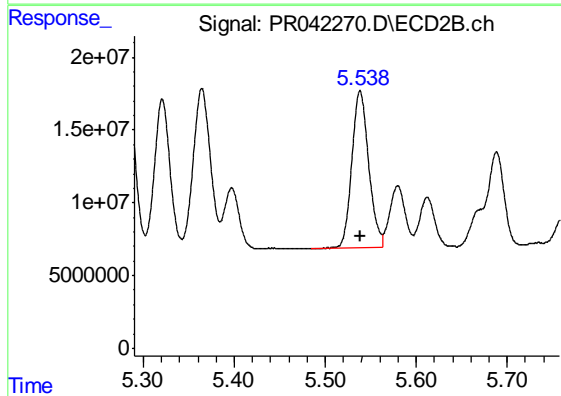
R.T.: 5.321 min
 Delta R.T.: 0.000 min
 Response: 120538689
 Conc: 500.00 ng/ml



#7 AR-1016-5

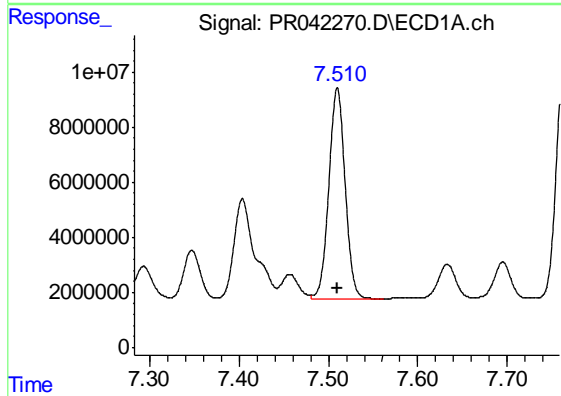
R.T.: 6.383 min
Delta R.T.: 0.000 min
Response: 50482530
Conc: 500.00 ng/ml

Instrument :
ECD_R
ClientSampleId :
AR1660ICC500



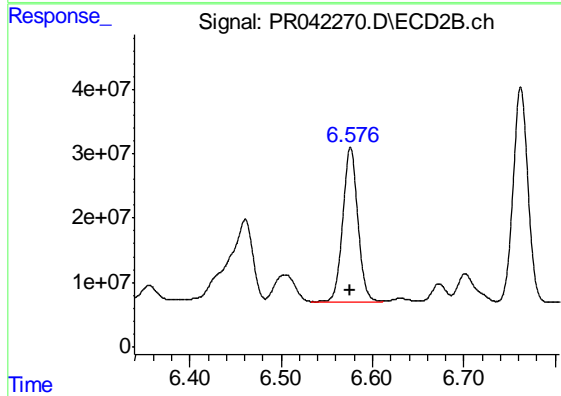
#7 AR-1016-5

R.T.: 5.538 min
Delta R.T.: 0.000 min
Response: 138995295
Conc: 500.00 ng/ml



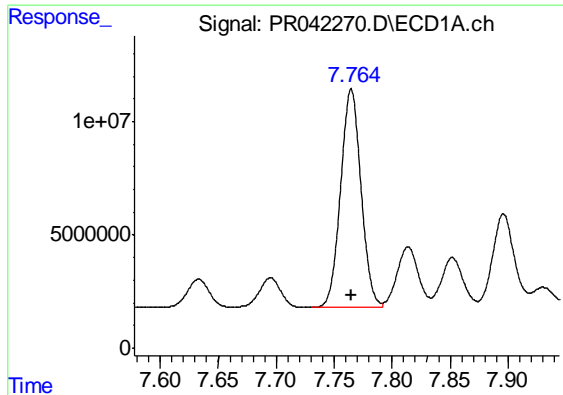
#31 AR-1260-1

R.T.: 7.510 min
Delta R.T.: 0.000 min
Response: 97499047
Conc: 500.00 ng/ml



#31 AR-1260-1

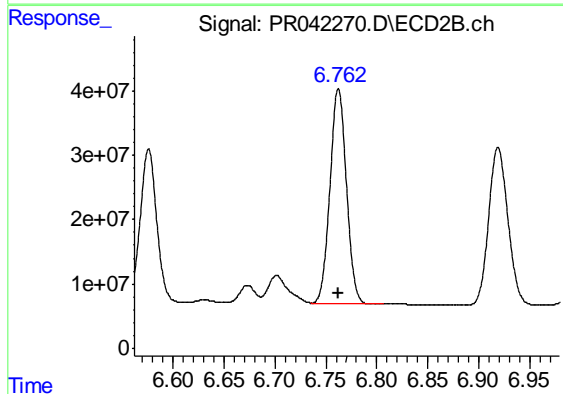
R.T.: 6.576 min
Delta R.T.: 0.000 min
Response: 273687800
Conc: 500.00 ng/ml



#32 AR-1260-2

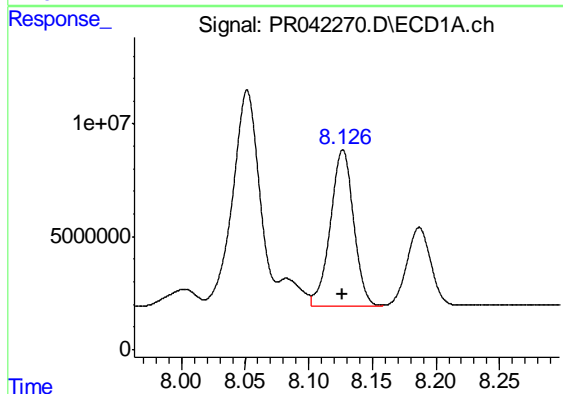
R.T.: 7.765 min
 Delta R.T.: 0.000 min
 Response: 117817325
 Conc: 500.00 ng/ml

Instrument :
 ECD_R
 ClientSampleId :
 AR1660ICC500



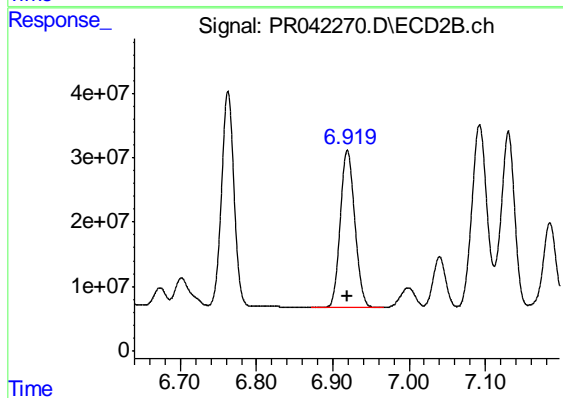
#32 AR-1260-2

R.T.: 6.762 min
 Delta R.T.: 0.000 min
 Response: 377521190
 Conc: 500.00 ng/ml



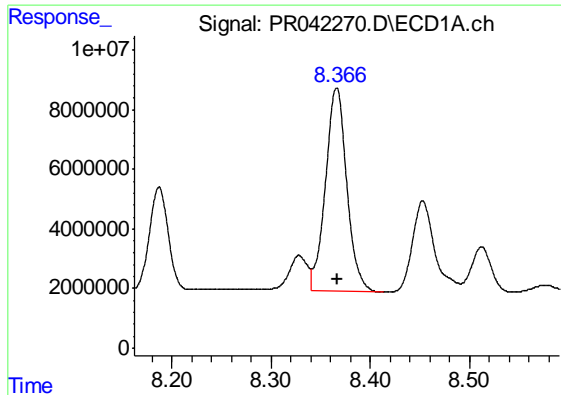
#33 AR-1260-3

R.T.: 8.127 min
 Delta R.T.: 0.000 min
 Response: 88344533
 Conc: 500.00 ng/ml



#33 AR-1260-3

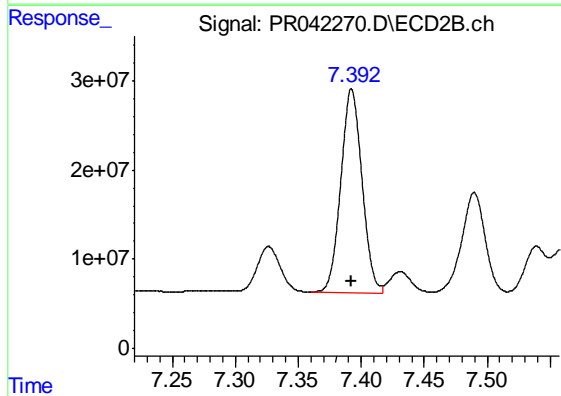
R.T.: 6.919 min
 Delta R.T.: 0.000 min
 Response: 322100029
 Conc: 500.00 ng/ml



#34 AR-1260-4

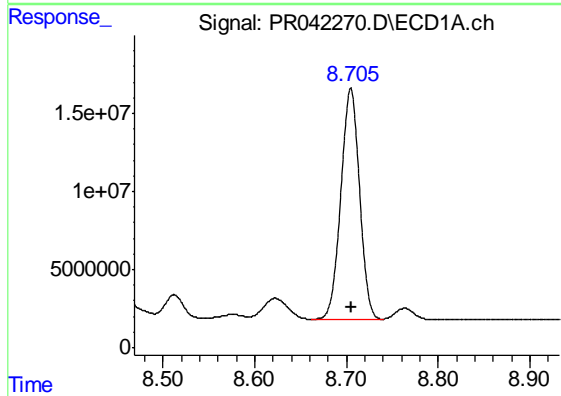
R.T.: 8.366 min
Delta R.T.: 0.000 min
Response: 101778743
Conc: 500.00 ng/ml

Instrument :
ECD_R
ClientSampleId :
AR1660ICC500



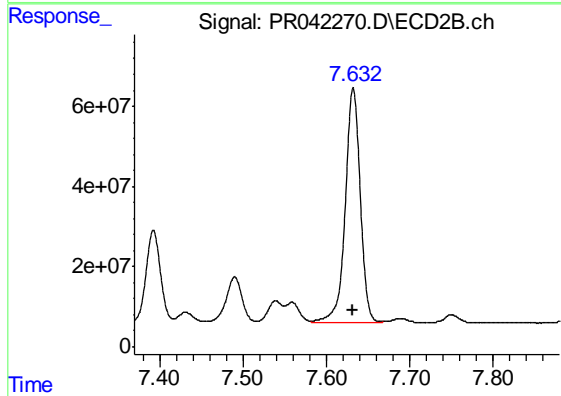
#34 AR-1260-4

R.T.: 7.392 min
Delta R.T.: 0.000 min
Response: 269649880
Conc: 500.00 ng/ml



#35 AR-1260-5

R.T.: 8.705 min
Delta R.T.: 0.000 min
Response: 209034859
Conc: 500.00 ng/ml



#35 AR-1260-5

R.T.: 7.632 min
Delta R.T.: 0.000 min
Response: 732268951
Conc: 500.00 ng/ml