

Data Path : Z:\pestpcbsrv\HPCHEM1\ECD\_R\Data\PR101719\  
 Data File : PR042295.D  
 Signal(s) : Signal #1: ECD1A.ch Signal #2: ECD2B.ch  
 Acq On : 17 Oct 2019 13:46  
 Operator : SM\AJ  
 Sample : AR1660CCC500  
 Misc :  
 ALS Vial : 3 Sample Multiplier: 1

**Instrument :**  
 ECD\_R  
**ClientSampleId :**  
 AR1660CCC500

**Manual Integrations**  
**APPROVED**  
 Ankita  
 10/18/2019 5:44:56 PM

Integration File signal 1: autoint1.e  
 Integration File signal 2: autoint2.e  
 Quant Time: Oct 17 14:16:43 2019  
 Quant Method : Z:\pestpcbsrv\HPCHEM1\ECD\_R\Method\PR101719.M  
 Quant Title : GC EXTRACTABLES  
 QLast Update : Thu Oct 17 06:40:58 2019  
 Response via : Initial Calibration  
 Integrator: ChemStation

Volume Inj. : 2 µl  
 Signal #1 Phase : ZB-MR1 Signal #2 Phase: ZB-MR2  
 Signal #1 Info : 30Mx0.32mmx 0.50µ Signal #2 Info : 30M x 0.32mm x 0.25µm

Compound	RT#1	RT#2	Resp#1	Resp#2	ng/ml	ng/ml
-----						
System Monitoring Compounds						
1) SA Tetrachlo...	4.727	3.983	255.2E6	933.7E6	53.590	54.840
2) SA Decachlor...	10.659	9.099	169.0E6	515.6E6	48.349m	50.795
Target Compounds						
3) L1 AR-1016-1	5.907	5.081	81111583	275.9E6	518.924	517.371
4) L1 AR-1016-2	5.930	5.101	114.2E6	374.4E6	513.017	509.371
5) L1 AR-1016-3	5.993	5.280	67685466	177.5E6	512.363	546.786
6) L1 AR-1016-4	6.093	5.320	56412456	135.0E6	521.242	516.824
7) L1 AR-1016-5	6.388	5.537	56165348	164.1E6	519.219	553.643
31) L7 AR-1260-1	7.515	6.576	101.9E6	306.5E6	489.850	529.831
32) L7 AR-1260-2	7.771	6.762	121.7E6	417.3E6	495.628	528.647
33) L7 AR-1260-3	8.133	6.919	91056308	358.1E6	488.013	526.579
34) L7 AR-1260-4	8.373	7.393	103.1E6	287.3E6	489.562	524.370
35) L7 AR-1260-5	8.712	7.632	204.4E6	759.3E6	486.614	515.328
-----						

(f)=RT Delta > 1/2 Window (#)=Amounts differ by > 25% (m)=manual int.

Data Path : Z:\pestpcbsrv\HPCHEM1\ECD\_R\Data\PR101719\  
 Data File : PR042295.D  
 Signal(s) : Signal #1: ECD1A.ch Signal #2: ECD2B.ch  
 Acq On : 17 Oct 2019 13:46  
 Operator : SM\AJ  
 Sample : AR1660CCC500  
 Misc :  
 ALS Vial : 3 Sample Multiplier: 1

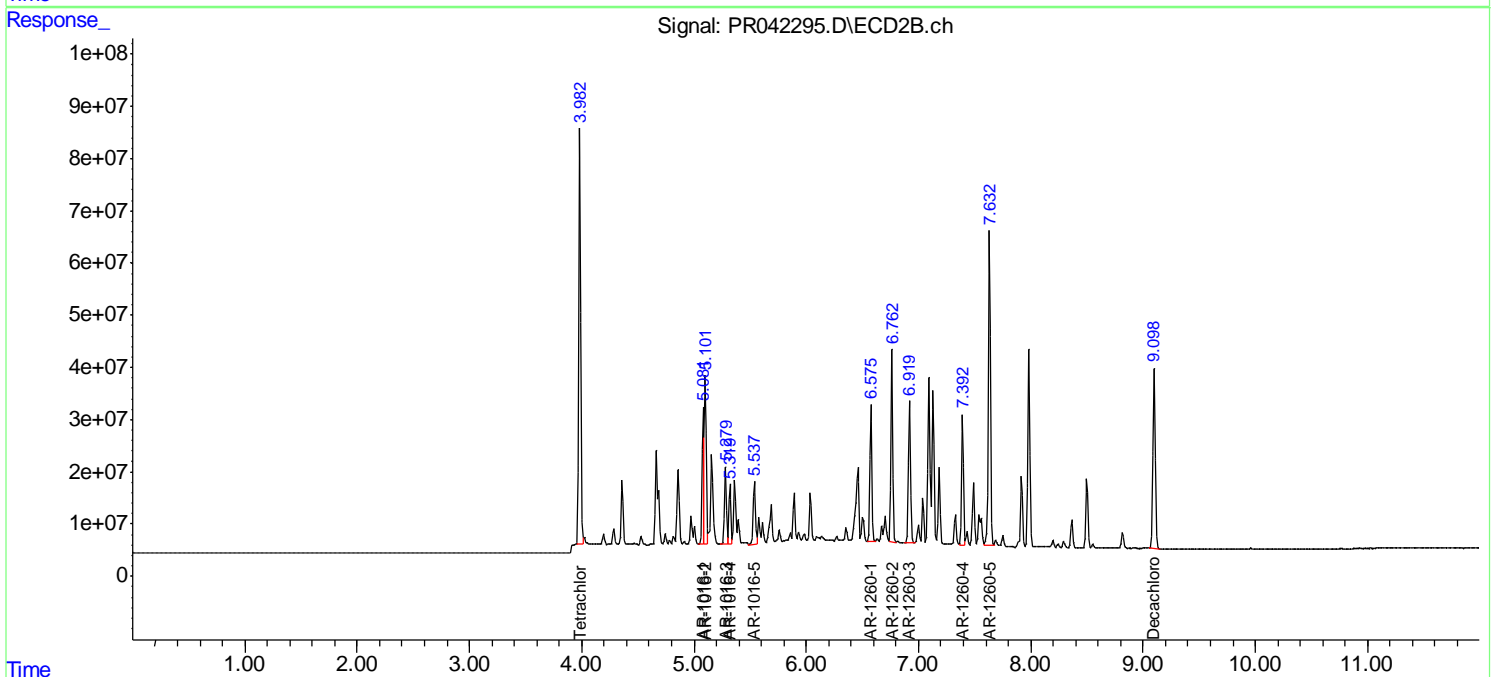
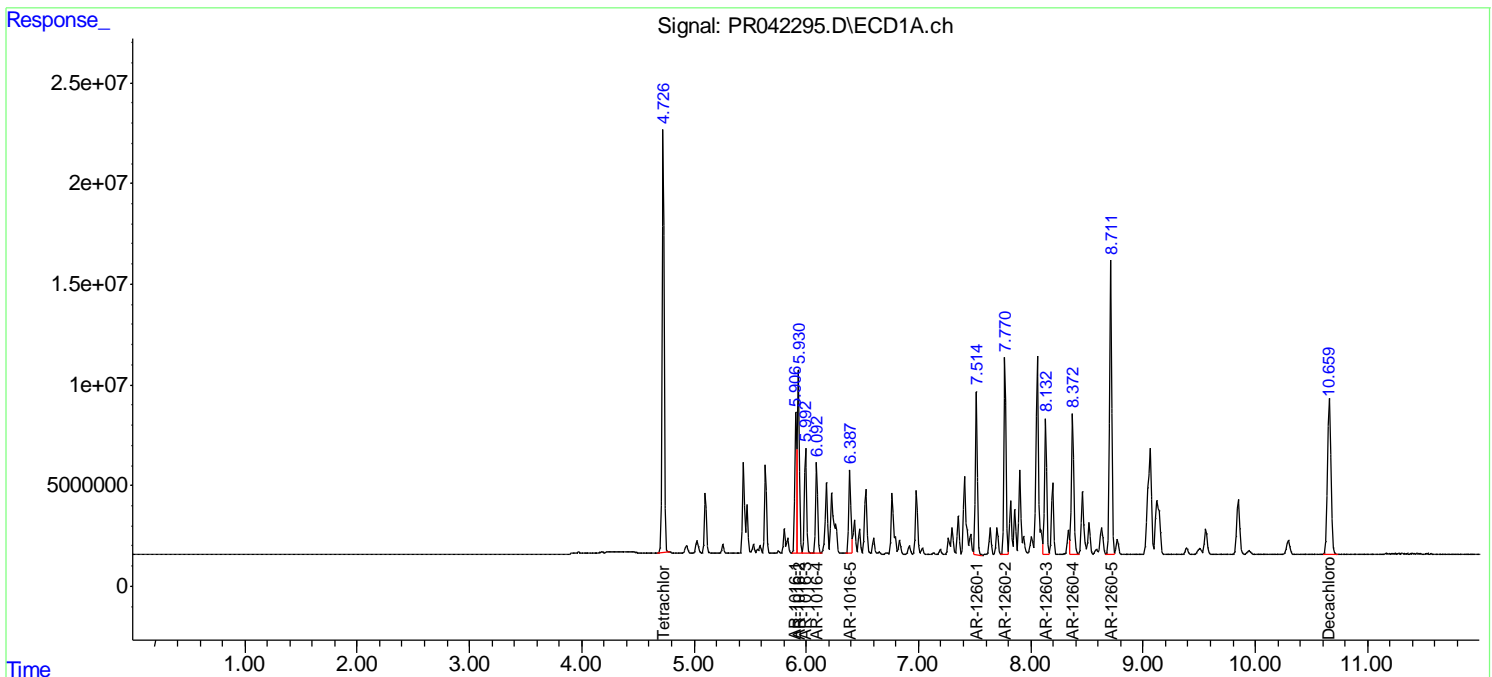
Instrument :  
 ECD\_R  
 Client Sampled :  
 AR1660CCC500

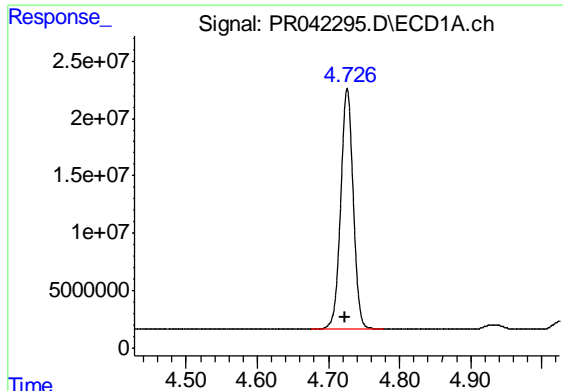
Manual Integrations  
 APPROVED

Ankita  
 10/18/2019 5:44:56 PM

Integration File signal 1: autoint1.e  
 Integration File signal 2: autoint2.e  
 Quant Time: Oct 17 14:16:43 2019  
 Quant Method : Z:\pestpcbsrv\HPCHEM1\ECD\_R\Method\PR101719.M  
 Quant Title : GC EXTRACTABLES  
 QLast Update : Thu Oct 17 06:40:58 2019  
 Response via : Initial Calibration  
 Integrator: ChemStation

Volume Inj. : 2 µl  
 Signal #1 Phase : ZB-MR1 Signal #2 Phase: ZB-MR2  
 Signal #1 Info : 30Mx0.32mmx 0.50µ Signal #2 Info : 30M x 0.32mm x 0.25µm





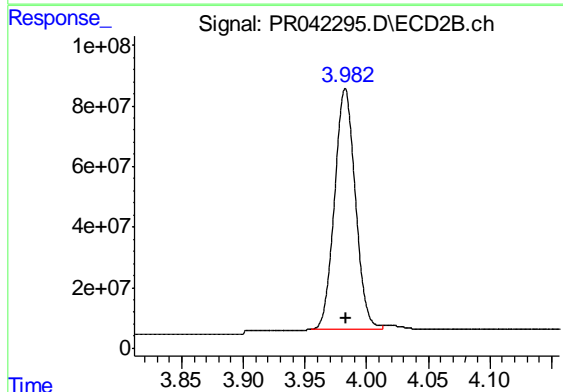
#1 Tetrachloro-m-xylene

R.T.: 4.727 min  
 Delta R.T.: 0.004 min  
 Response: 255217112  
 Conc: 53.59 ng/ml

Instrument :  
 ECD\_R  
 ClientSampleId :  
 AR1660CCC500

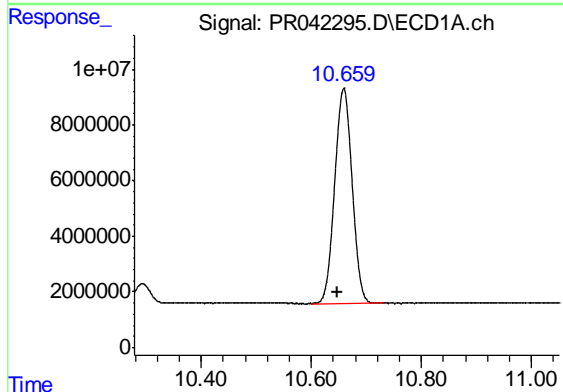
Manual Integrations  
 APPROVED

Ankita  
 10/18/2019 5:44:56 PM



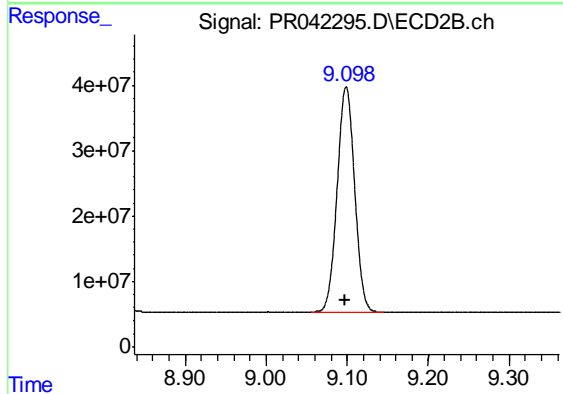
#1 Tetrachloro-m-xylene

R.T.: 3.983 min  
 Delta R.T.: 0.000 min  
 Response: 933689059  
 Conc: 54.84 ng/ml



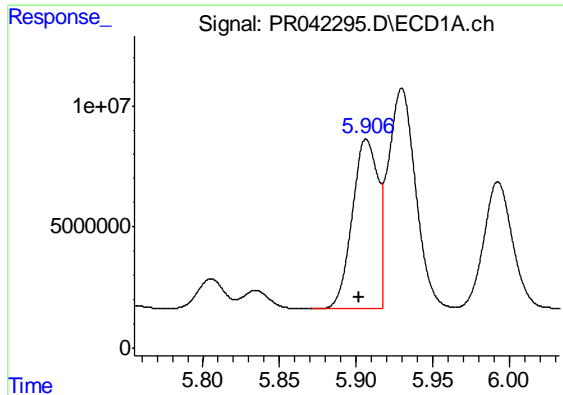
#2 Decachlorobiphenyl

R.T.: 10.659 min  
 Delta R.T.: 0.011 min  
 Response: 169045003  
 Conc: 48.35 ng/ml m



#2 Decachlorobiphenyl

R.T.: 9.099 min  
 Delta R.T.: 0.000 min  
 Response: 515618568  
 Conc: 50.80 ng/ml



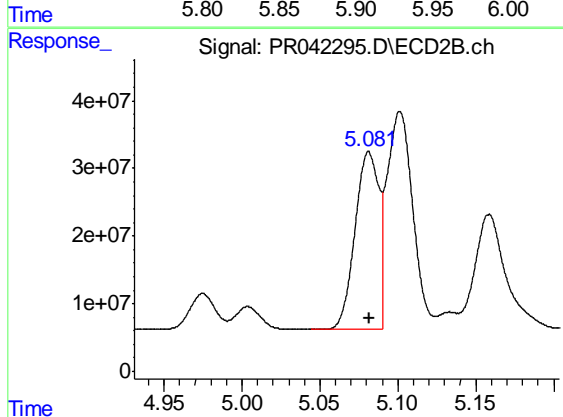
#3 AR-1016-1

R.T.: 5.907 min  
 Delta R.T.: 0.005 min  
 Response: 81111583  
 Conc: 518.92 ng/ml

Instrument :  
 ECD\_R  
 ClientSampleId :  
 AR1660CCC500

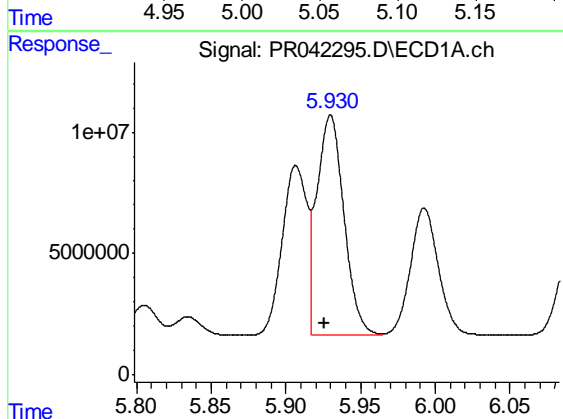
Manual Integrations  
 APPROVED

Ankita  
 10/18/2019 5:44:56 PM



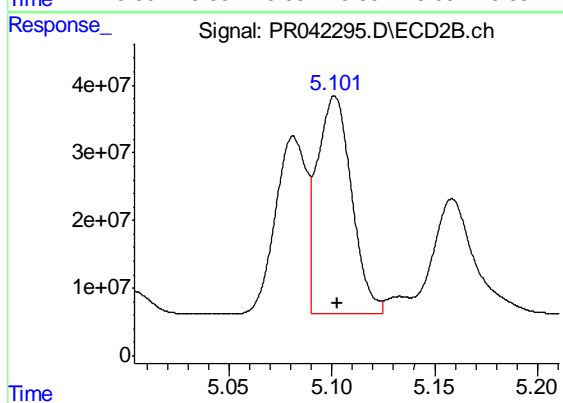
#3 AR-1016-1

R.T.: 5.081 min  
 Delta R.T.: 0.000 min  
 Response: 275921528  
 Conc: 517.37 ng/ml



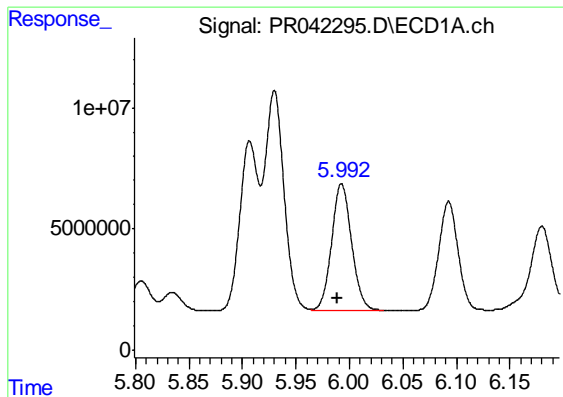
#4 AR-1016-2

R.T.: 5.930 min  
 Delta R.T.: 0.004 min  
 Response: 114188739  
 Conc: 513.02 ng/ml



#4 AR-1016-2

R.T.: 5.101 min  
 Delta R.T.: -0.001 min  
 Response: 374375644  
 Conc: 509.37 ng/ml



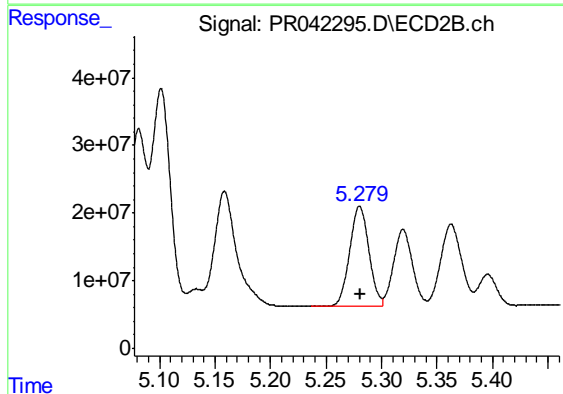
#5 AR-1016-3

R.T.: 5.993 min  
 Delta R.T.: 0.004 min  
 Response: 67685466  
 Conc: 512.36 ng/ml

Instrument :  
 ECD\_R  
 ClientSampleId :  
 AR1660CCC500

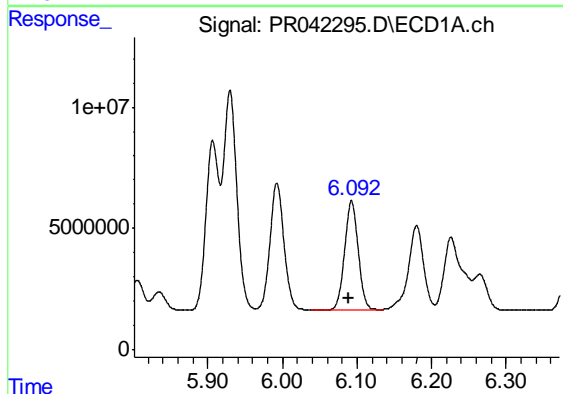
Manual Integrations  
 APPROVED

Ankita  
 10/18/2019 5:44:56 PM



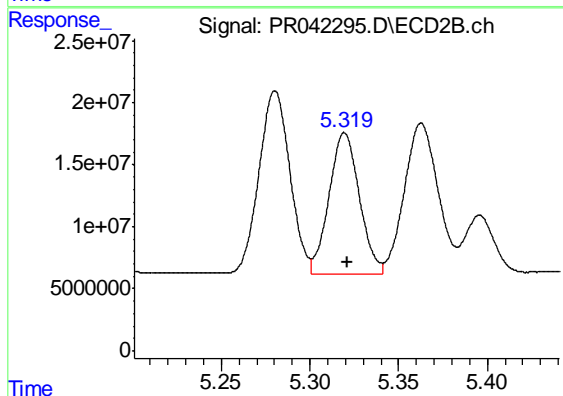
#5 AR-1016-3

R.T.: 5.280 min  
 Delta R.T.: 0.000 min  
 Response: 177486330  
 Conc: 546.79 ng/ml



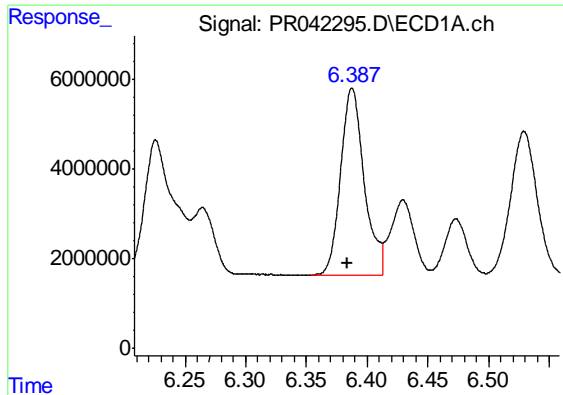
#6 AR-1016-4

R.T.: 6.093 min  
 Delta R.T.: 0.004 min  
 Response: 56412456  
 Conc: 521.24 ng/ml



#6 AR-1016-4

R.T.: 5.320 min  
 Delta R.T.: -0.001 min  
 Response: 134978691  
 Conc: 516.82 ng/ml



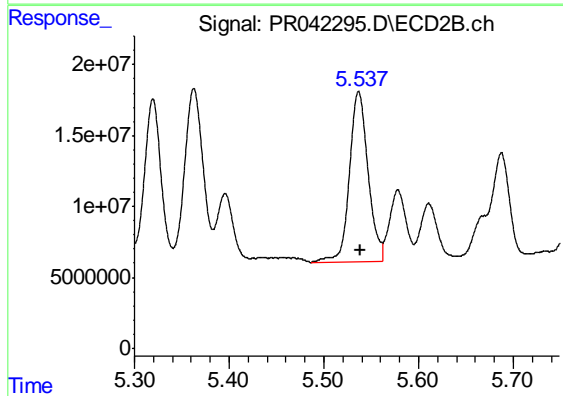
#7 AR-1016-5

R.T.: 6.388 min  
 Delta R.T.: 0.004 min  
 Response: 56165348  
 Conc: 519.22 ng/ml

Instrument :  
 ECD\_R  
 ClientSampleId :  
 AR1660CCC500

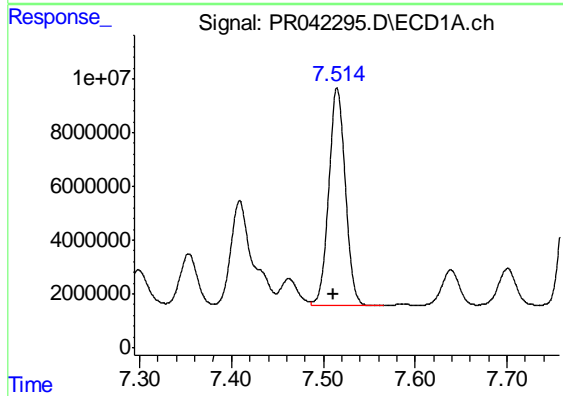
Manual Integrations  
 APPROVED

Ankita  
 10/18/2019 5:44:56 PM



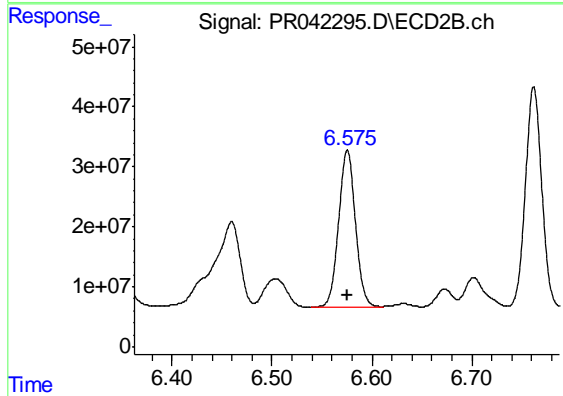
#7 AR-1016-5

R.T.: 5.537 min  
 Delta R.T.: -0.001 min  
 Response: 164091628  
 Conc: 553.64 ng/ml



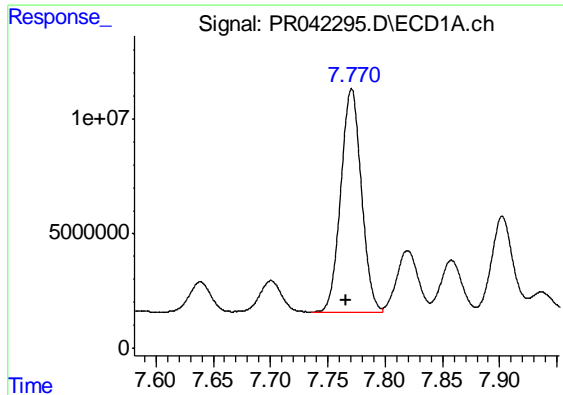
#31 AR-1260-1

R.T.: 7.515 min  
 Delta R.T.: 0.004 min  
 Response: 101893408  
 Conc: 489.85 ng/ml



#31 AR-1260-1

R.T.: 6.576 min  
 Delta R.T.: 0.000 min  
 Response: 306459163  
 Conc: 529.83 ng/ml



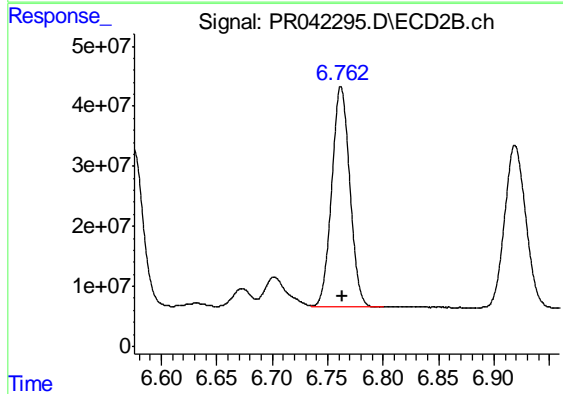
#32 AR-1260-2

R.T.: 7.771 min  
 Delta R.T.: 0.005 min  
 Response: 121699181  
 Conc: 495.63 ng/ml

Instrument :  
 ECD\_R  
 ClientSampleId :  
 AR1660CCC500

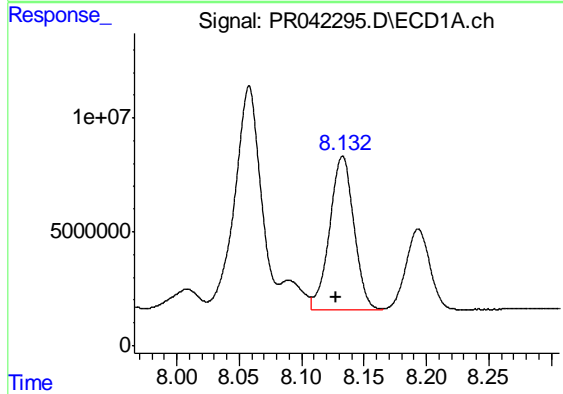
Manual Integrations  
 APPROVED

Ankita  
 10/18/2019 5:44:56 PM



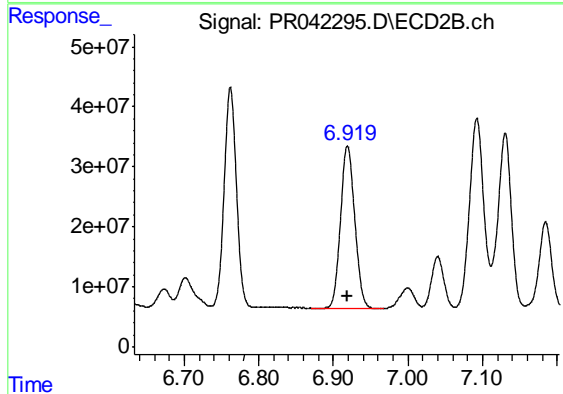
#32 AR-1260-2

R.T.: 6.762 min  
 Delta R.T.: 0.000 min  
 Response: 417313142  
 Conc: 528.65 ng/ml



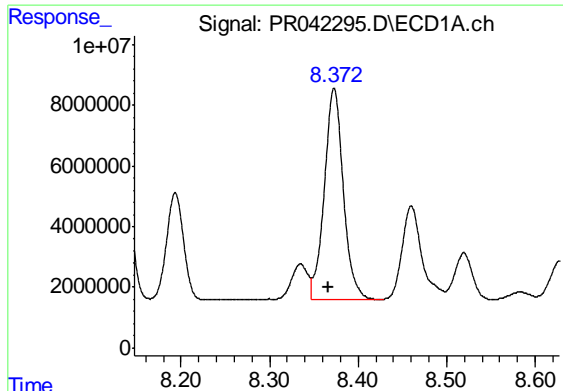
#33 AR-1260-3

R.T.: 8.133 min  
 Delta R.T.: 0.005 min  
 Response: 91056308  
 Conc: 488.01 ng/ml



#33 AR-1260-3

R.T.: 6.919 min  
 Delta R.T.: 0.000 min  
 Response: 358114286  
 Conc: 526.58 ng/ml



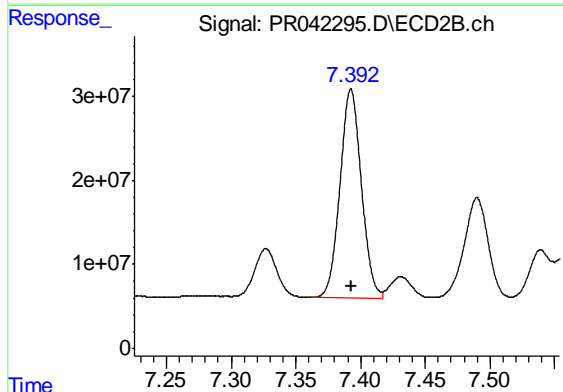
#34 AR-1260-4

R.T.: 8.373 min  
 Delta R.T.: 0.007 min  
 Response: 103129432  
 Conc: 489.56 ng/ml

Instrument :  
 ECD\_R  
 ClientSampleId :  
 AR1660CCC500

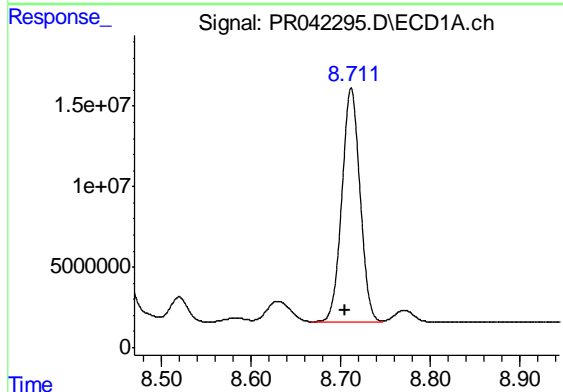
Manual Integrations  
 APPROVED

Ankita  
 10/18/2019 5:44:56 PM



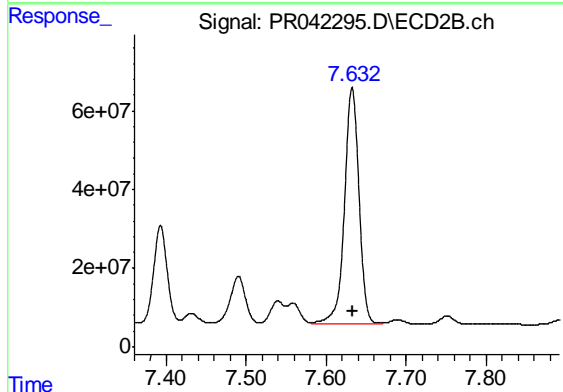
#34 AR-1260-4

R.T.: 7.393 min  
 Delta R.T.: 0.000 min  
 Response: 287314036  
 Conc: 524.37 ng/ml



#35 AR-1260-5

R.T.: 8.712 min  
 Delta R.T.: 0.007 min  
 Response: 204446123  
 Conc: 486.61 ng/ml



#35 AR-1260-5

R.T.: 7.632 min  
 Delta R.T.: 0.000 min  
 Response: 759341909  
 Conc: 515.33 ng/ml