

Data Path : Z:\pestpcbsrv\HPCHEM1\ECD\_R\Data\PR101722\  
 Data File : PR057436.D  
 Signal(s) : Signal #1: ECD1A.ch Signal #2: ECD2B.ch  
 Acq On : 17 Oct 2022 18:27  
 Operator : AJ\MA  
 Sample : N5141-01  
 Misc :  
 ALS Vial : 19 Sample Multiplier: 1

Instrument :  
 ECD\_R  
 ClientSampleId :  
 SV34211L

Integration File signal 1: autoint1.e  
 Integration File signal 2: autoint2.e  
 Quant Time: Oct 18 02:26:38 2022  
 Quant Method : Z:\pestpcbsrv\HPCHEM1\ECD\_R\Method\PR101222.M  
 Quant Title : GC EXTRACTABLES  
 QLast Update : Thu Oct 13 04:58:31 2022  
 Response via : Initial Calibration  
 Integrator: ChemStation

Volume Inj. : 2 µl  
 Signal #1 Phase : ZB-MR1 Signal #2 Phase: ZB-MR2  
 Signal #1 Info : 30Mx0.32mmx 0.50µ Signal #2 Info : 30M x 0.32mm x 0.25µm

Compound	RT#1	RT#2	Resp#1	Resp#2	ng/ml	ng/ml
System Monitoring Compounds						
1) SA Tetrachlo...	3.611	2.882	26305560	20165399	7.596	14.313 #
2) SA Decachlor...	9.488	8.077	15915649	11653751	6.047	6.320
Target Compounds						
3) L1 AR-1016-1	4.831	3.965f	5042675	1912461	41.695	43.104
4) L1 AR-1016-2	4.831f	4.030f	5042675	2310721	29.032	32.656
5) L1 AR-1016-3	4.894f	0.000	3133972	0	30.806	N.D. #
6) L1 AR-1016-4	5.045f	4.238	6278571	1707133	74.617	64.884
7) L1 AR-1016-5	5.350	4.458f	7902431	2685104	100.223	76.533
8) L2 AR-1221-1	3.827	3.103	112.1E6	1917385	3080.171	130.854 #
9) L2 AR-1221-2	3.924	3.175	2223378	6061817	83.907	535.215 #
10) L2 AR-1221-3	4.010	3.278	3545703	2685816	43.223	75.056 #
11) L3 AR-1232-1	4.010	3.278	3545703	2685816	58.510	100.792 #
12) L3 AR-1232-2	4.552	4.030f	7318761	2310721	212.489	81.989 #
13) L3 AR-1232-3	4.831f	0.000	5042675	0	73.428	N.D. #
14) L3 AR-1232-4	5.045f	4.274	6278571	1722312	195.608	145.161 #
15) L3 AR-1232-5	5.104f	4.458f	3920638	2685104	171.937	186.450
16) L4 AR-1242-1	4.831	3.965f	5042675	1912461	56.801	55.977
17) L4 AR-1242-2	4.831f	4.030f	5042675	2310721	40.165	43.953
18) L4 AR-1242-3	4.894f	0.000	3133972	0	40.960	N.D. #
19) L4 AR-1242-4	5.045f	4.274	6278571	1722312	101.242	70.607 #
20) L4 AR-1242-5	5.811	4.792f	6736710	1773746	106.009	51.894 #
21) L5 AR-1248-1	4.831	3.965f	5042675	1912461	70.602	69.651
22) L5 AR-1248-2	5.144f	4.218	7281174	1599982	83.172	45.673 #
23) L5 AR-1248-3	5.350	4.274	7902431	1722312	76.085	48.125 #
24) L5 AR-1248-4	5.783	4.458f	9043668	2685104	79.195	59.373 #
25) L5 AR-1248-5	5.811	4.844	6736710	1315756	61.801	27.404 #
26) L6 AR-1254-1	5.711f	4.792	14656373	1773746	125.096	26.521 #
27) L6 AR-1254-2	5.998f	4.963	11470947	541647	63.902	9.023 #
28) L6 AR-1254-3	6.372	5.402f	12080347	1952793	66.317	19.424 #
29) L6 AR-1254-4	6.660f	5.621	2541192	392218	17.511	5.796 #
30) L6 AR-1254-5	7.117f	6.068	3247883	918082	21.246	9.131 #
31) L7 AR-1260-1	6.531f	5.523	3582756	703224	24.423	10.569 #
32) L7 AR-1260-2	6.846	5.733	4811470	2495254	27.422	27.305
33) L7 AR-1260-3	7.216	5.863f	2334437	1211292	19.612	14.339 #
34) L7 AR-1260-4	7.441f	6.393	6716231	1275281	51.423	20.491 #
35) L7 AR-1260-5	7.801	6.649	2339828	1162011	8.555	6.614
36) L8 AR-1262-1	7.216	6.102	2334437	86096	12.801	0.890 #
37) L8 AR-1262-2	7.801	6.393	2339828	1275281	7.371	15.561 #
38) L8 AR-1262-3	8.086f	6.939	4290724	1183046	20.069	14.745 #
39) L8 AR-1262-4	0.000	7.005	0	639855	N.D.	4.368 #
40) L8 AR-1262-5	8.819	7.575f	1189962	-65122	10.631	N.D. #
41) L9 AR-1268-1	8.086f	6.939	4290724	1183046	10.710	4.721 #

Data Path : Z:\pestpcbsrv\HPCHEM1\ECD\_R\Data\PR101722\  
 Data File : PR057436.D  
 Signal(s) : Signal #1: ECD1A.ch Signal #2: ECD2B.ch  
 Acq On : 17 Oct 2022 18:27  
 Operator : AJ\MA  
 Sample : N5141-01  
 Misc :  
 ALS Vial : 19 Sample Multiplier: 1

Instrument :  
 ECD\_R  
 ClientSampleId :  
 SV34211L

Integration File signal 1: autoint1.e  
 Integration File signal 2: autoint2.e  
 Quant Time: Oct 18 02:26:38 2022  
 Quant Method : Z:\pestpcbsrv\HPCHEM1\ECD\_R\Method\PR101222.M  
 Quant Title : GC EXTRACTABLES  
 QLast Update : Thu Oct 13 04:58:31 2022  
 Response via : Initial Calibration  
 Integrator: ChemStation

Volume Inj. : 2 µl  
 Signal #1 Phase : ZB-MR1 Signal #2 Phase: ZB-MR2  
 Signal #1 Info : 30Mx0.32mmx 0.50µ Signal #2 Info : 30M x 0.32mm x 0.25µm

	Compound	RT#1	RT#2	Resp#1	Resp#2	ng/ml	ng/ml
42)	L9 AR-1268-2	8.220f	7.005	4461269	639855	12.129	2.649 #
43)	L9 AR-1268-3	8.424f	7.221	3674558	773282	11.582	3.673 #
44)	L9 AR-1268-4	8.819	7.575f	1189962	-65122	8.965	N.D. #
45)	L9 AR-1268-5	9.185	7.838	991015	536503	1.020	0.788

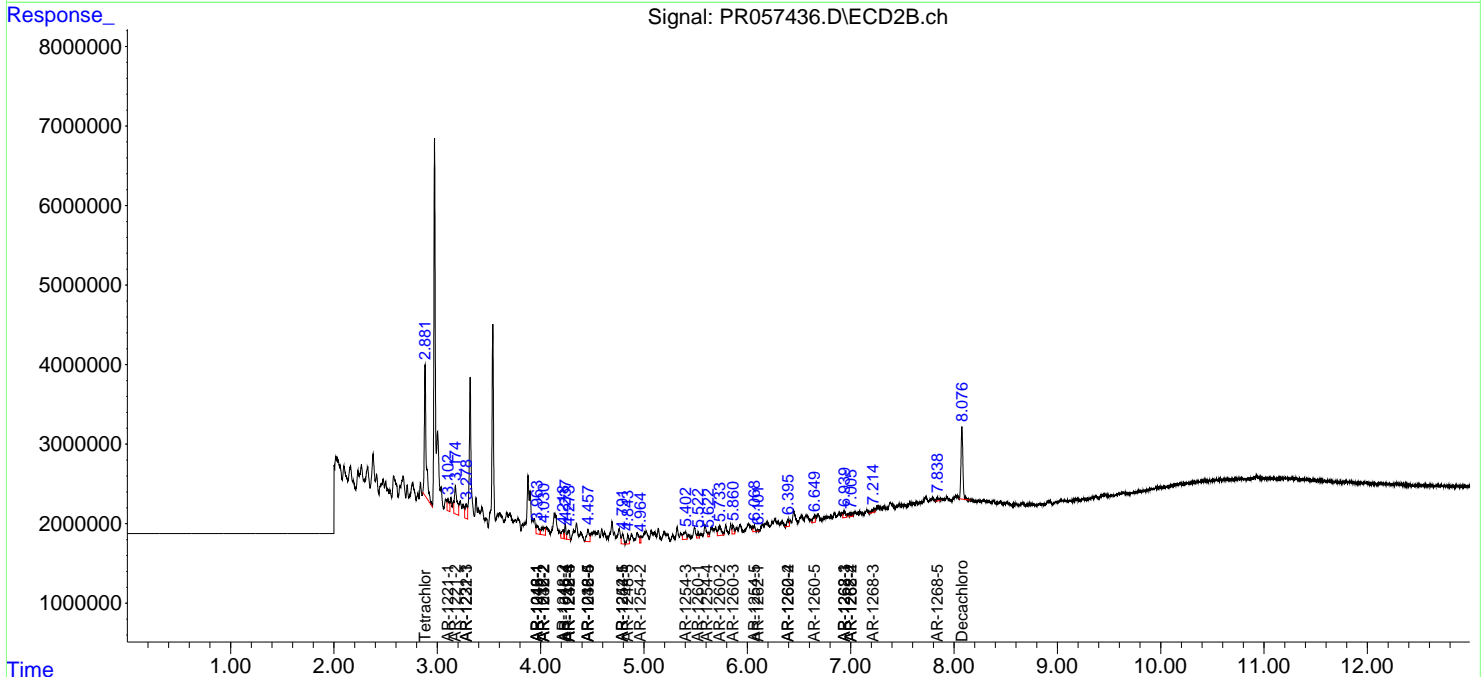
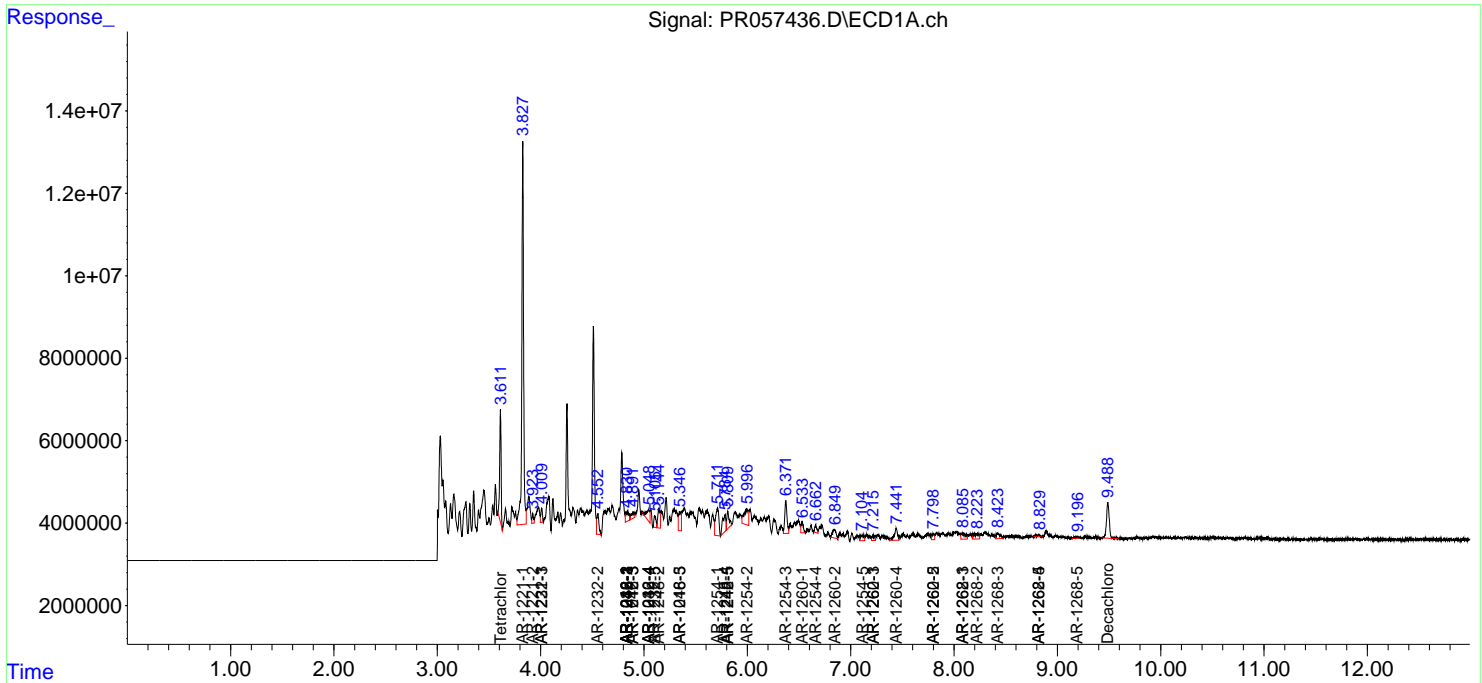
(f)=RT Delta > 1/2 Window (#)=Amounts differ by > 25% (m)=manual int.

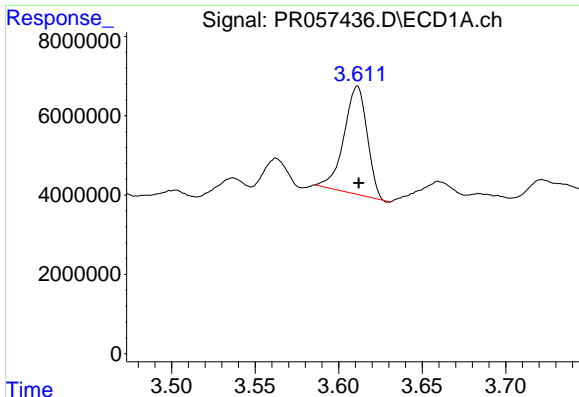
Data Path : Z:\pestpcbsrv\HPCHEM1\ECD\_R\Data\PR101722\  
 Data File : PR057436.D  
 Signal(s) : Signal #1: ECD1A.ch Signal #2: ECD2B.ch  
 Acq On : 17 Oct 2022 18:27  
 Operator : AJ\MA  
 Sample : N5141-01  
 Misc :  
 ALS Vial : 19 Sample Multiplier: 1

**Instrument :**  
 ECD\_R  
**ClientSampleId :**  
 SV34211L

Integration File signal 1: autoint1.e  
 Integration File signal 2: autoint2.e  
 Quant Time: Oct 18 02:26:38 2022  
 Quant Method : Z:\pestpcbsrv\HPCHEM1\ECD\_R\Method\PR101222.M  
 Quant Title : GC EXTRACTABLES  
 QLast Update : Thu Oct 13 04:58:31 2022  
 Response via : Initial Calibration  
 Integrator: ChemStation

Volume Inj. : 2 µl  
 Signal #1 Phase : ZB-MR1 Signal #2 Phase: ZB-MR2  
 Signal #1 Info : 30Mx0.32mmx 0.50µ Signal #2 Info : 30M x 0.32mm x 0.25µm

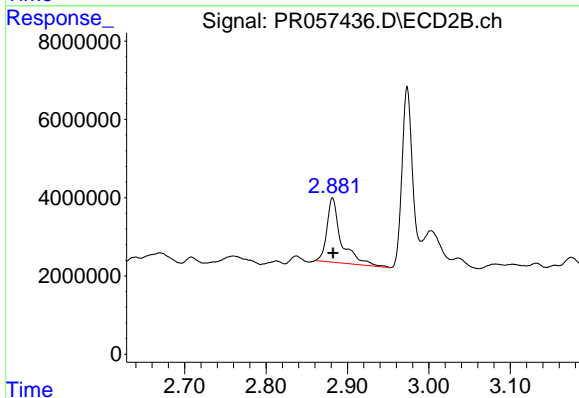




#1 Tetrachloro-m-xylene

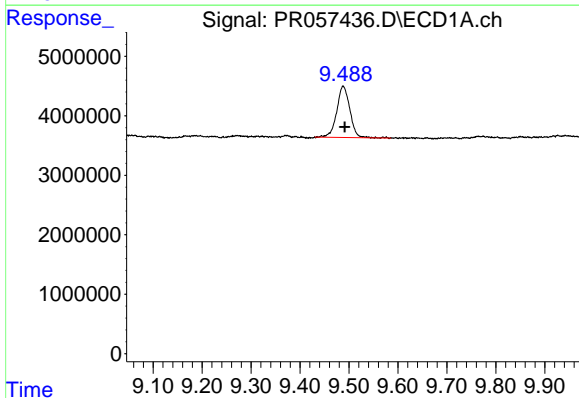
R.T.: 3.611 min  
 Delta R.T.: -0.001 min  
 Response: 26305560  
 Conc: 7.60 ng/ml

Instrument :  
 ECD\_R  
 ClientSampleId :  
 SV34211L



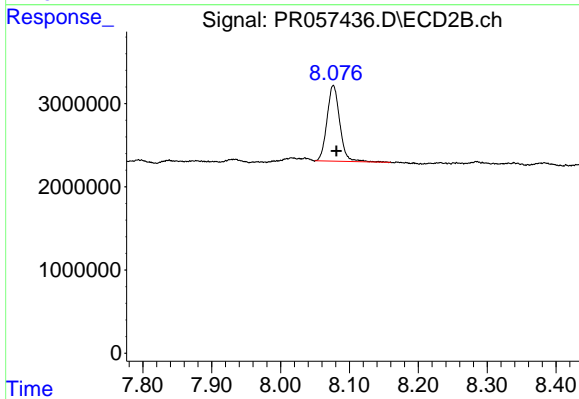
#1 Tetrachloro-m-xylene

R.T.: 2.882 min  
 Delta R.T.: 0.000 min  
 Response: 20165399  
 Conc: 14.31 ng/ml



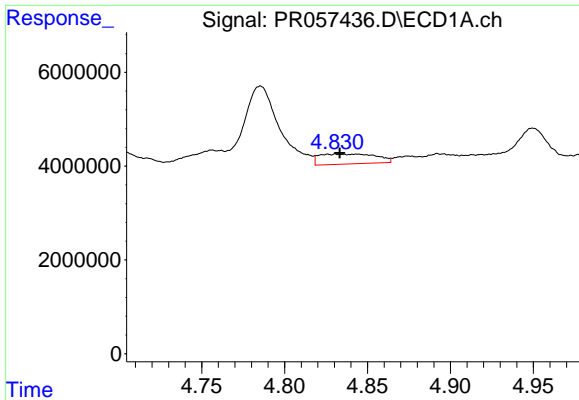
#2 Decachlorobiphenyl

R.T.: 9.488 min  
 Delta R.T.: -0.003 min  
 Response: 15915649  
 Conc: 6.05 ng/ml



#2 Decachlorobiphenyl

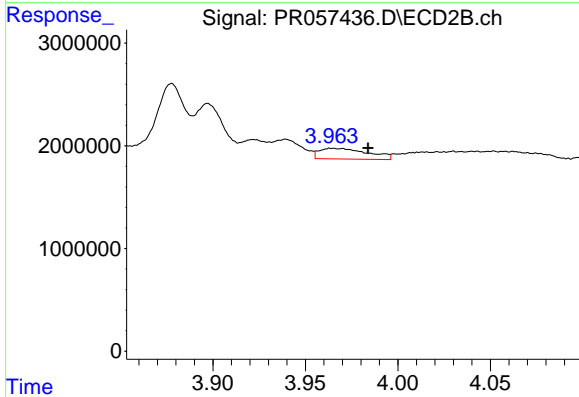
R.T.: 8.077 min  
 Delta R.T.: -0.005 min  
 Response: 11653751  
 Conc: 6.32 ng/ml



#3 AR-1016-1

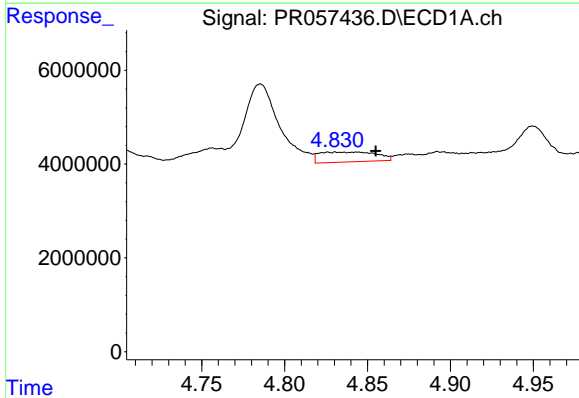
R.T.: 4.831 min  
 Delta R.T.: -0.002 min  
 Response: 5042675  
 Conc: 41.69 ng/ml

Instrument :  
 ECD\_R  
 ClientSampleId :  
 SV34211L



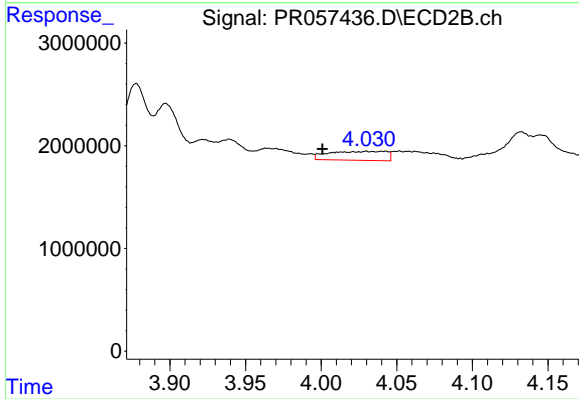
#3 AR-1016-1

R.T.: 3.965 min  
 Delta R.T.: -0.019 min  
 Response: 1912461  
 Conc: 43.10 ng/ml



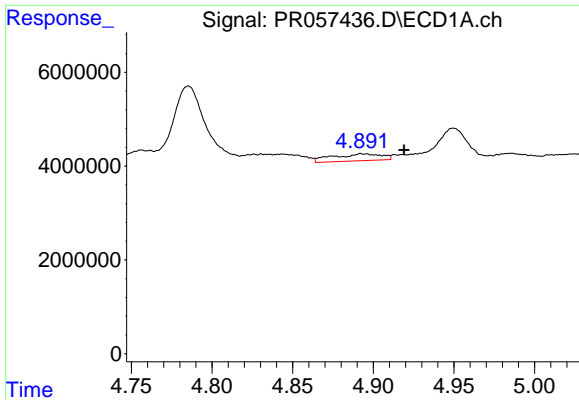
#4 AR-1016-2

R.T.: 4.831 min  
 Delta R.T.: -0.024 min  
 Response: 5042675  
 Conc: 29.03 ng/ml



#4 AR-1016-2

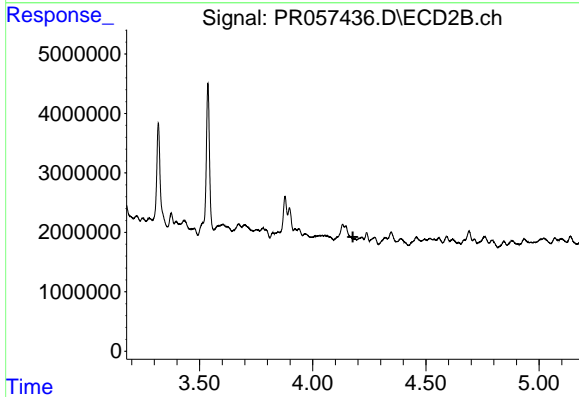
R.T.: 4.030 min  
 Delta R.T.: 0.029 min  
 Response: 2310721  
 Conc: 32.66 ng/ml



#5 AR-1016-3

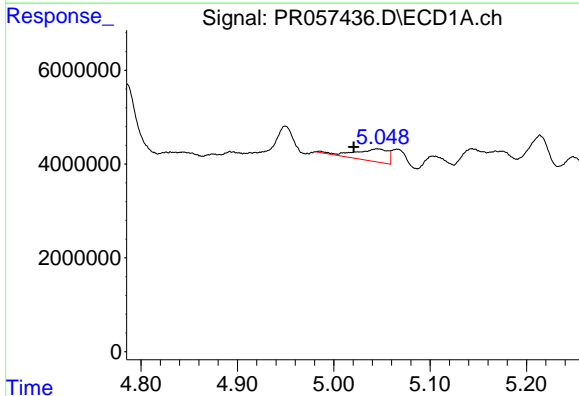
R.T.: 4.894 min  
 Delta R.T.: -0.025 min  
 Response: 3133972  
 Conc: 30.81 ng/ml

Instrument :  
 ECD\_R  
 ClientSampleId :  
 SV34211L



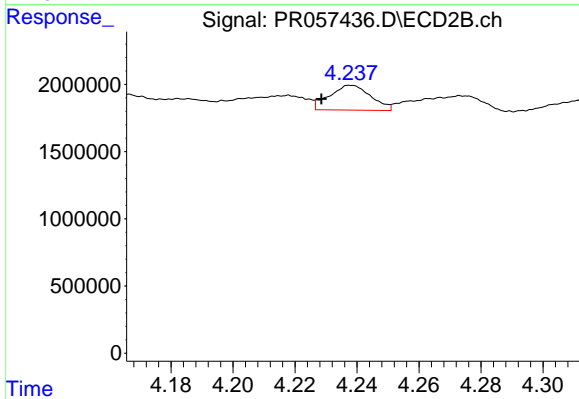
#5 AR-1016-3

R.T.: 0.000 min  
 Exp R.T. : 4.177 min  
 Response: 0  
 Conc: N.D.



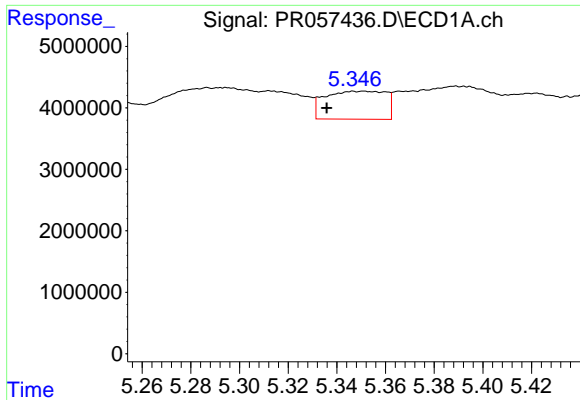
#6 AR-1016-4

R.T.: 5.045 min  
 Delta R.T.: 0.025 min  
 Response: 6278571  
 Conc: 74.62 ng/ml



#6 AR-1016-4

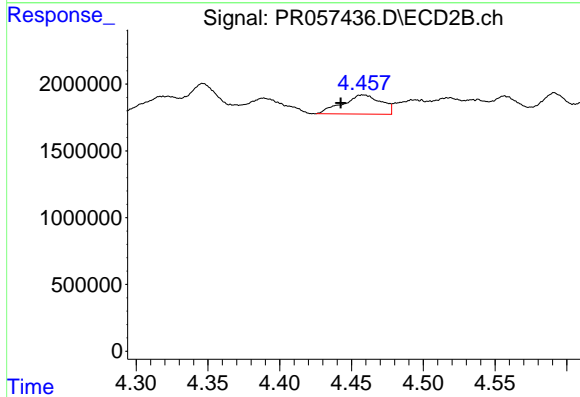
R.T.: 4.238 min  
 Delta R.T.: 0.010 min  
 Response: 1707133  
 Conc: 64.88 ng/ml



#7 AR-1016-5

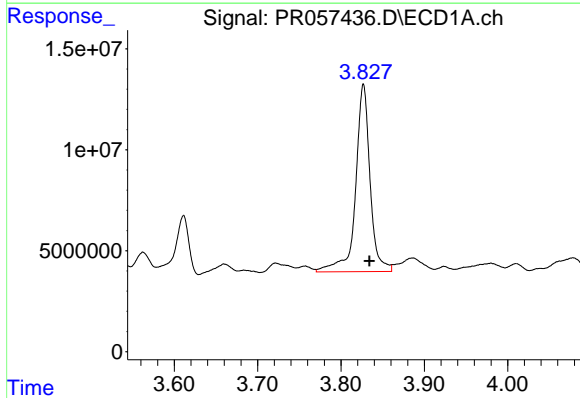
R.T.: 5.350 min  
 Delta R.T.: 0.015 min  
 Response: 7902431  
 Conc: 100.22 ng/ml

Instrument :  
 ECD\_R  
 ClientSampleId :  
 SV34211L



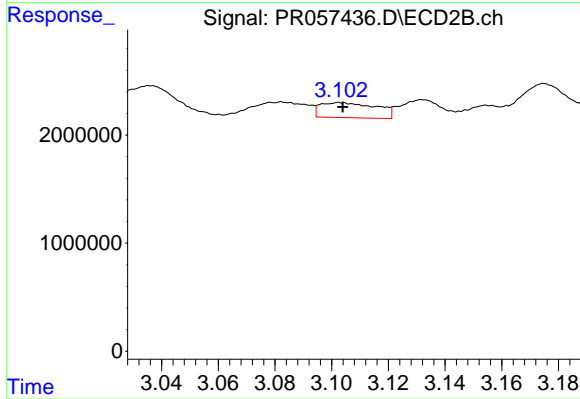
#7 AR-1016-5

R.T.: 4.458 min  
 Delta R.T.: 0.015 min  
 Response: 2685104  
 Conc: 76.53 ng/ml



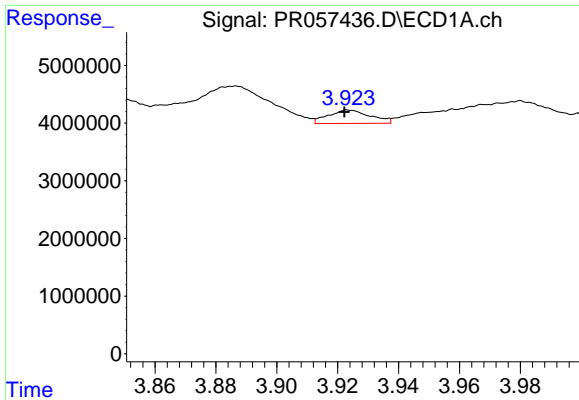
#8 AR-1221-1

R.T.: 3.827 min  
 Delta R.T.: -0.007 min  
 Response: 112081904  
 Conc: 3080.17 ng/ml



#8 AR-1221-1

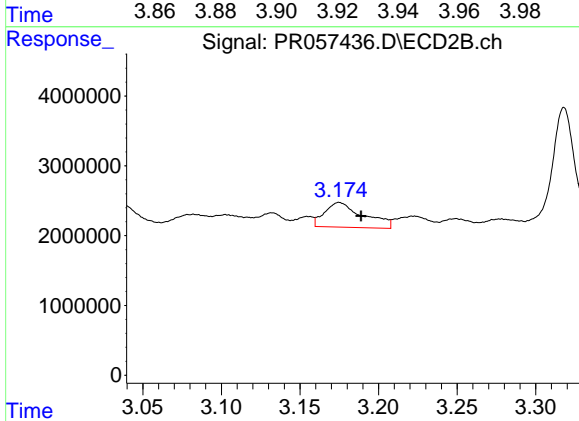
R.T.: 3.103 min  
 Delta R.T.: -0.001 min  
 Response: 1917385  
 Conc: 130.85 ng/ml



#9 AR-1221-2

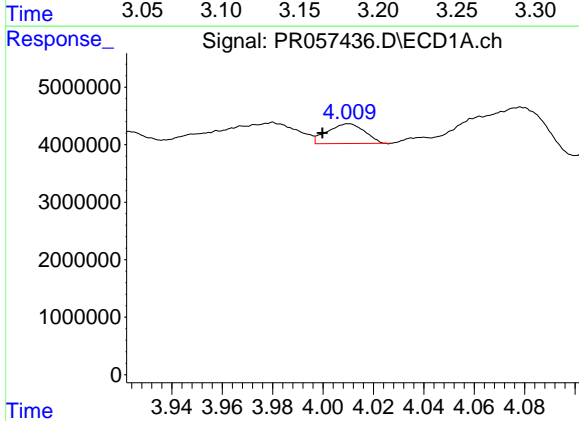
R.T.: 3.924 min  
 Delta R.T.: 0.002 min  
 Response: 2223378  
 Conc: 83.91 ng/ml

Instrument :  
 ECD\_R  
 ClientSampleId :  
 SV34211L



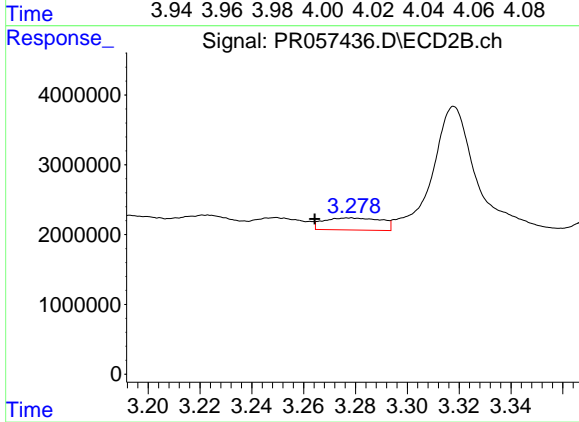
#9 AR-1221-2

R.T.: 3.175 min  
 Delta R.T.: -0.014 min  
 Response: 6061817  
 Conc: 535.21 ng/ml



#10 AR-1221-3

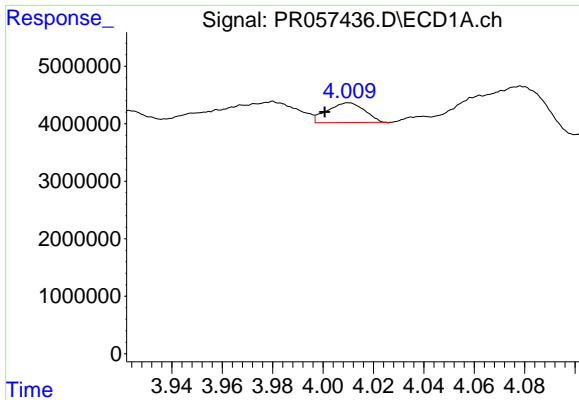
R.T.: 4.010 min  
 Delta R.T.: 0.010 min  
 Response: 3545703  
 Conc: 43.22 ng/ml



#10 AR-1221-3

R.T.: 3.278 min  
 Delta R.T.: 0.013 min  
 Response: 2685816  
 Conc: 75.06 ng/ml

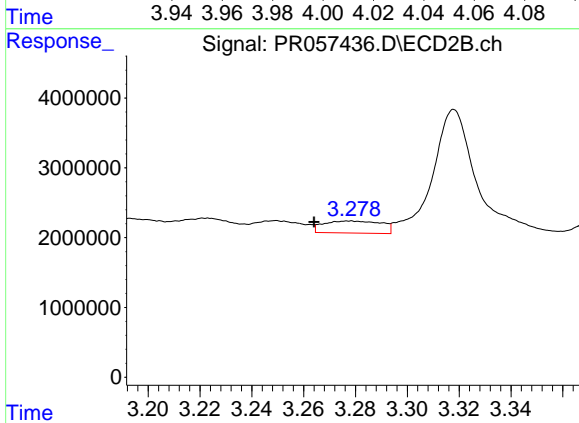




#11 AR-1232-1

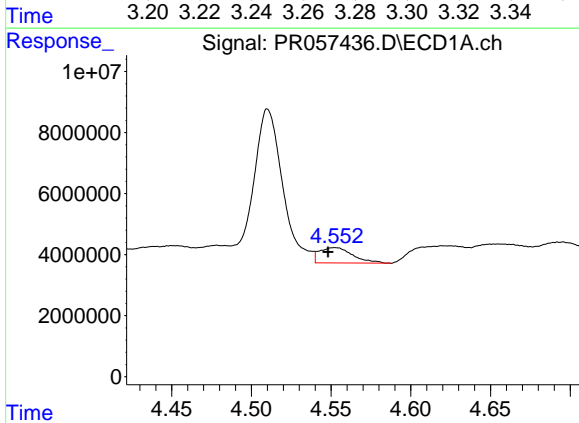
R.T.: 4.010 min  
 Delta R.T.: 0.009 min  
 Response: 3545703  
 Conc: 58.51 ng/ml

Instrument :  
 ECD\_R  
 ClientSampleId :  
 SV34211L



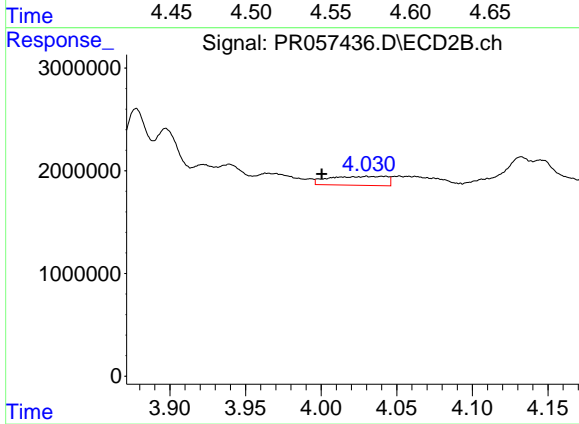
#11 AR-1232-1

R.T.: 3.278 min  
 Delta R.T.: 0.014 min  
 Response: 2685816  
 Conc: 100.79 ng/ml



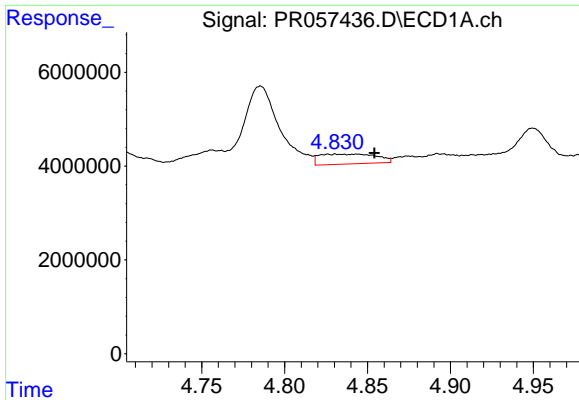
#12 AR-1232-2

R.T.: 4.552 min  
 Delta R.T.: 0.004 min  
 Response: 7318761  
 Conc: 212.49 ng/ml



#12 AR-1232-2

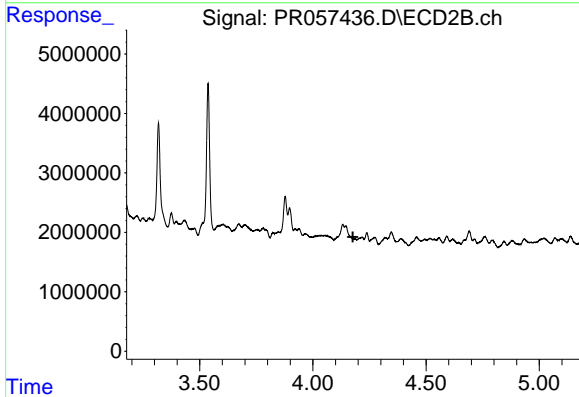
R.T.: 4.030 min  
 Delta R.T.: 0.030 min  
 Response: 2310721  
 Conc: 81.99 ng/ml



#13 AR-1232-3

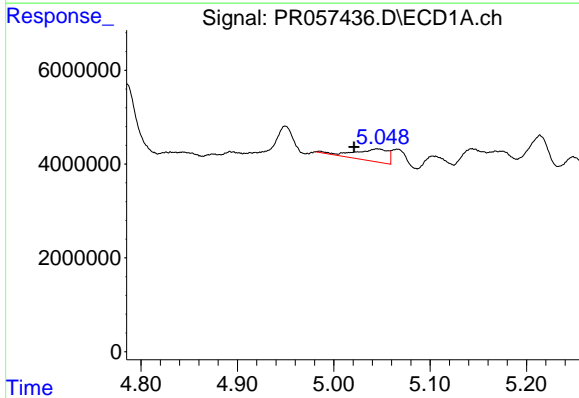
R.T.: 4.831 min  
 Delta R.T.: -0.023 min  
 Response: 5042675  
 Conc: 73.43 ng/ml

Instrument :  
 ECD\_R  
 ClientSampleId :  
 SV34211L



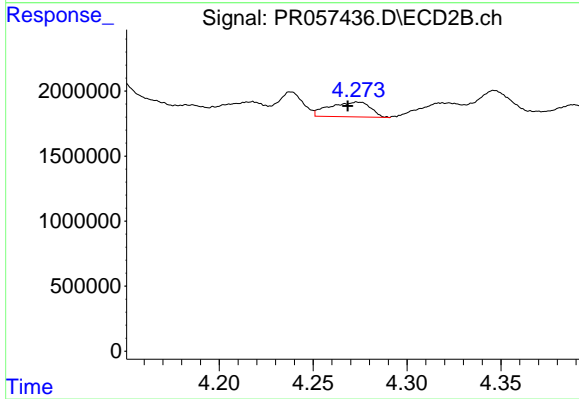
#13 AR-1232-3

R.T.: 0.000 min  
 Exp R.T. : 4.177 min  
 Response: 0  
 Conc: N.D.



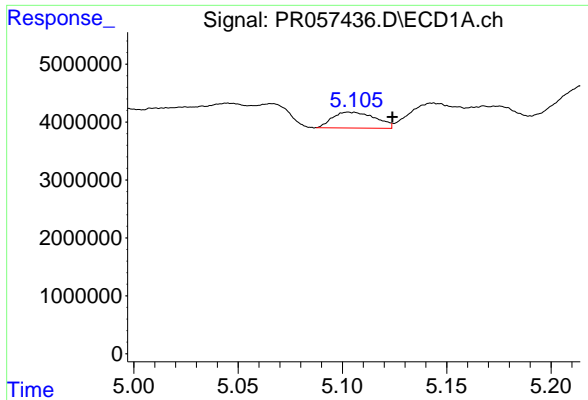
#14 AR-1232-4

R.T.: 5.045 min  
 Delta R.T.: 0.024 min  
 Response: 6278571  
 Conc: 195.61 ng/ml



#14 AR-1232-4

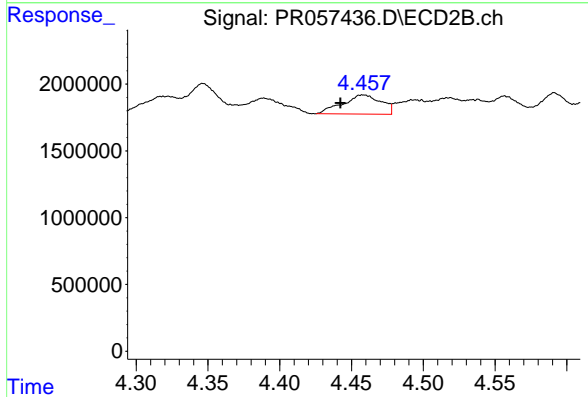
R.T.: 4.274 min  
 Delta R.T.: 0.006 min  
 Response: 1722312  
 Conc: 145.16 ng/ml



#15 AR-1232-5

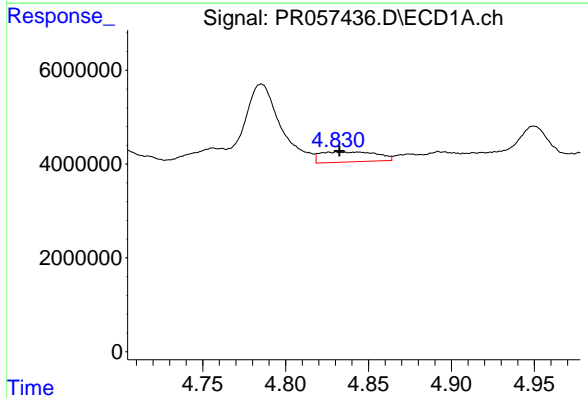
R.T.: 5.104 min  
 Delta R.T.: -0.020 min  
 Response: 3920638  
 Conc: 171.94 ng/ml

Instrument :  
 ECD\_R  
 ClientSampleId :  
 SV34211L



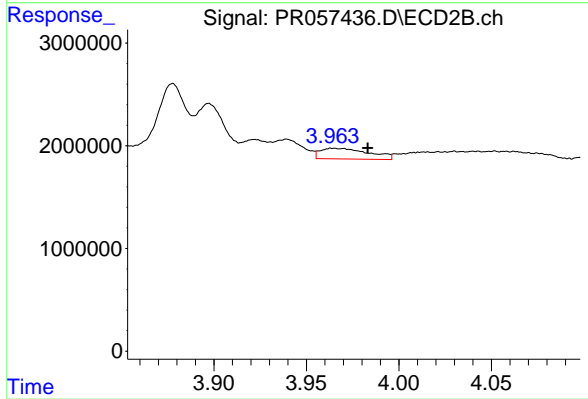
#15 AR-1232-5

R.T.: 4.458 min  
 Delta R.T.: 0.016 min  
 Response: 2685104  
 Conc: 186.45 ng/ml



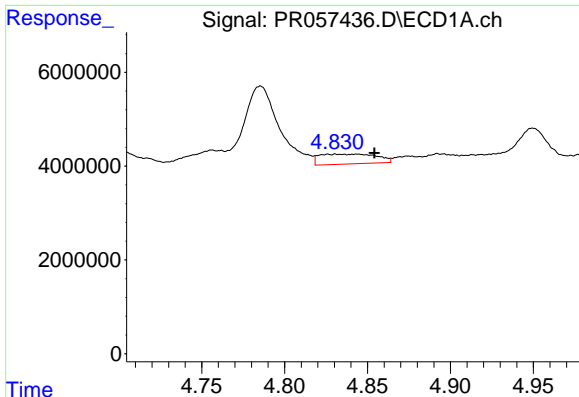
#16 AR-1242-1

R.T.: 4.831 min  
 Delta R.T.: -0.001 min  
 Response: 5042675  
 Conc: 56.80 ng/ml



#16 AR-1242-1

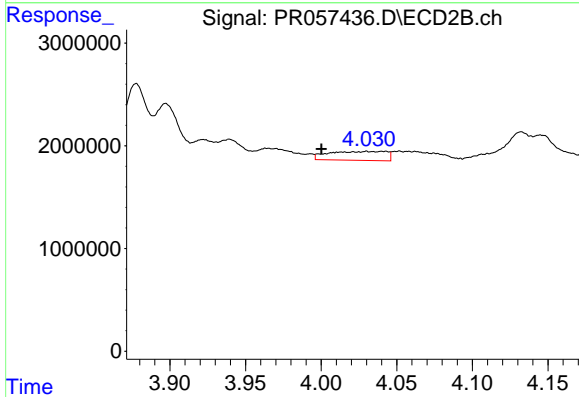
R.T.: 3.965 min  
 Delta R.T.: -0.019 min  
 Response: 1912461  
 Conc: 55.98 ng/ml



#17 AR-1242-2

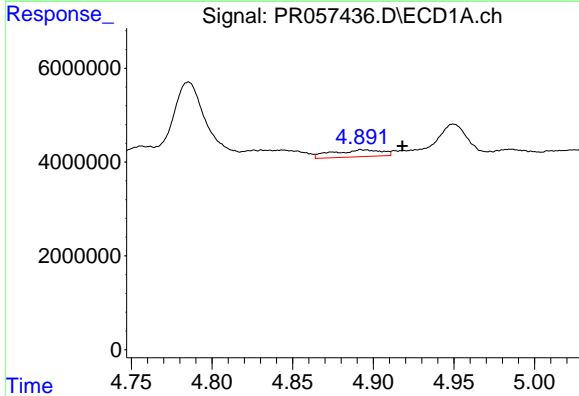
R.T.: 4.831 min  
 Delta R.T.: -0.023 min  
 Response: 5042675  
 Conc: 40.16 ng/ml

Instrument :  
 ECD\_R  
 ClientSampleId :  
 SV34211L



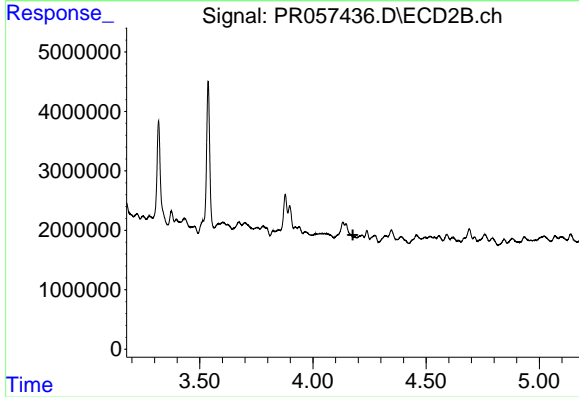
#17 AR-1242-2

R.T.: 4.030 min  
 Delta R.T.: 0.030 min  
 Response: 2310721  
 Conc: 43.95 ng/ml



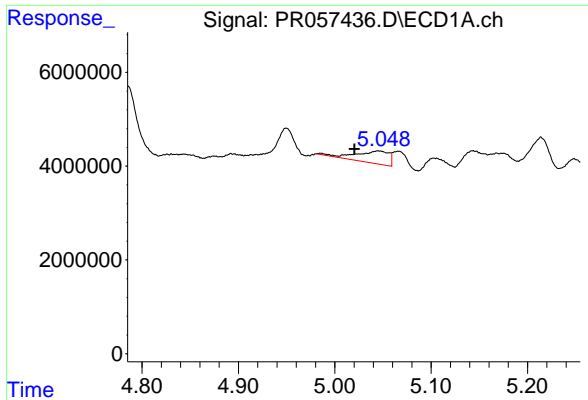
#18 AR-1242-3

R.T.: 4.894 min  
 Delta R.T.: -0.024 min  
 Response: 3133972  
 Conc: 40.96 ng/ml



#18 AR-1242-3

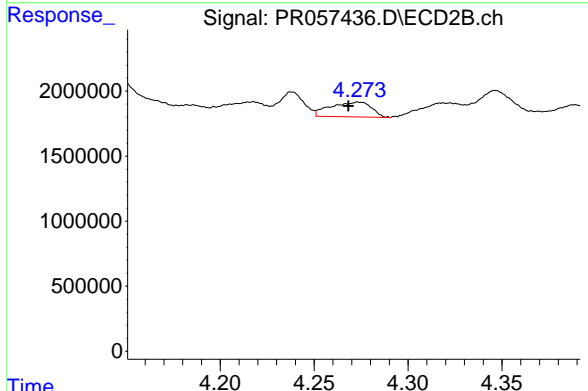
R.T.: 0.000 min  
 Exp R.T. : 4.177 min  
 Response: 0  
 Conc: N.D.



#19 AR-1242-4

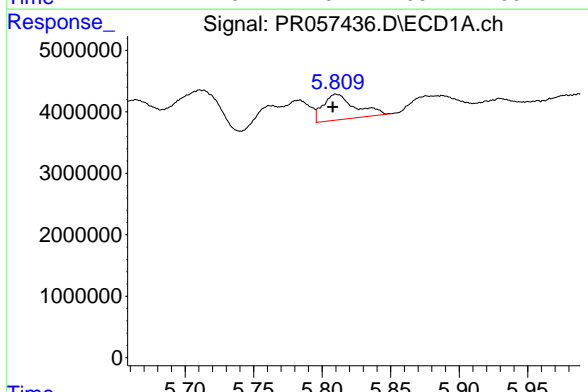
R.T.: 5.045 min  
 Delta R.T.: 0.025 min  
 Response: 6278571  
 Conc: 101.24 ng/ml

Instrument :  
 ECD\_R  
 ClientSampleId :  
 SV34211L



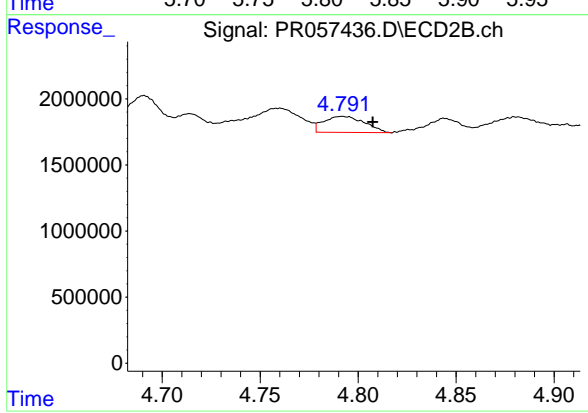
#19 AR-1242-4

R.T.: 4.274 min  
 Delta R.T.: 0.006 min  
 Response: 1722312  
 Conc: 70.61 ng/ml



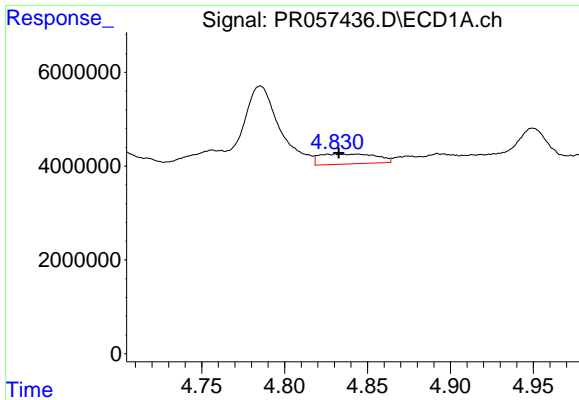
#20 AR-1242-5

R.T.: 5.811 min  
 Delta R.T.: 0.003 min  
 Response: 6736710  
 Conc: 106.01 ng/ml



#20 AR-1242-5

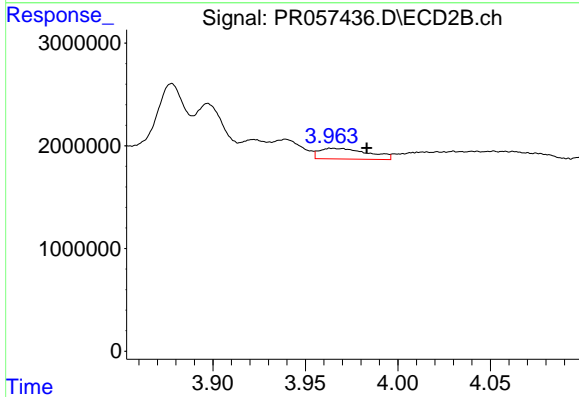
R.T.: 4.792 min  
 Delta R.T.: -0.016 min  
 Response: 1773746  
 Conc: 51.89 ng/ml



#21 AR-1248-1

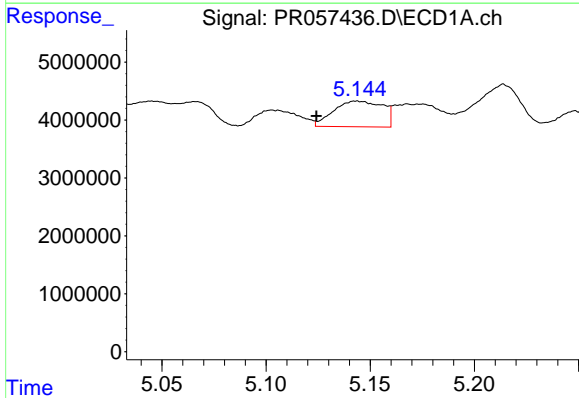
R.T.: 4.831 min  
 Delta R.T.: -0.002 min  
 Response: 5042675  
 Conc: 70.60 ng/ml

Instrument :  
 ECD\_R  
 ClientSampleId :  
 SV34211L



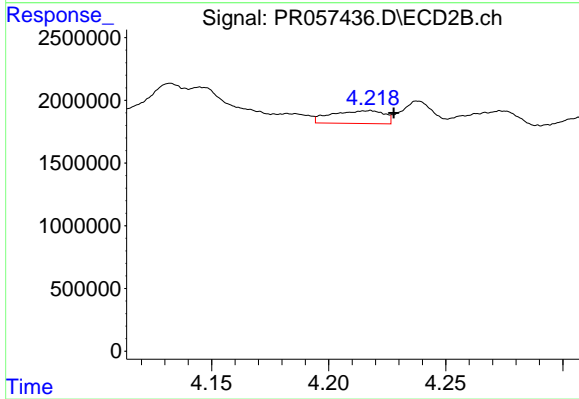
#21 AR-1248-1

R.T.: 3.965 min  
 Delta R.T.: -0.019 min  
 Response: 1912461  
 Conc: 69.65 ng/ml



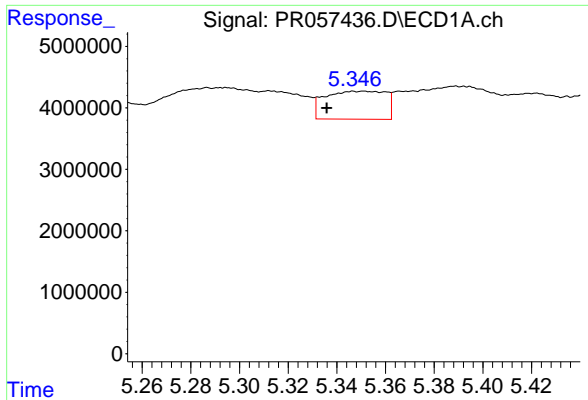
#22 AR-1248-2

R.T.: 5.144 min  
 Delta R.T.: 0.020 min  
 Response: 7281174  
 Conc: 83.17 ng/ml



#22 AR-1248-2

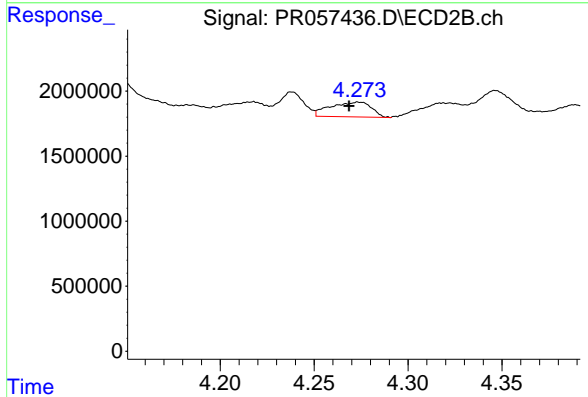
R.T.: 4.218 min  
 Delta R.T.: -0.010 min  
 Response: 1599982  
 Conc: 45.67 ng/ml



#23 AR-1248-3

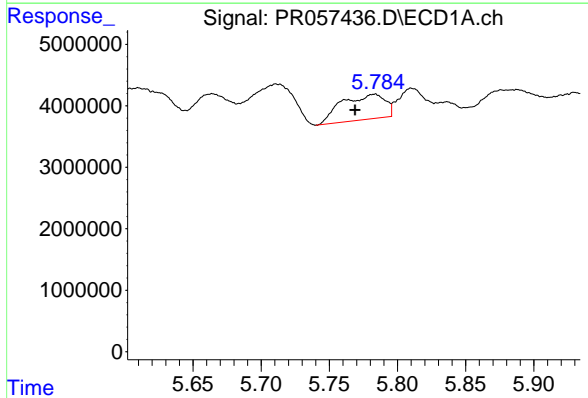
R.T.: 5.350 min  
 Delta R.T.: 0.015 min  
 Response: 7902431  
 Conc: 76.08 ng/ml

Instrument :  
 ECD\_R  
 ClientSampleId :  
 SV34211L



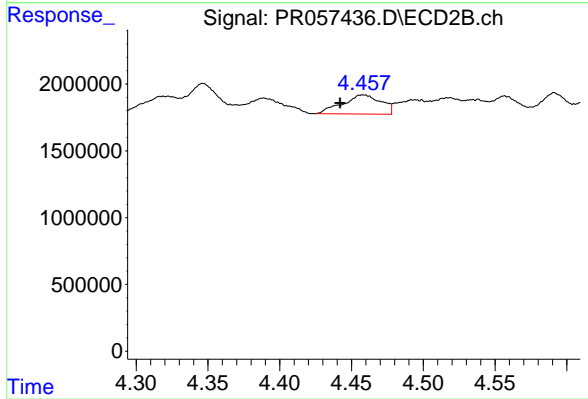
#23 AR-1248-3

R.T.: 4.274 min  
 Delta R.T.: 0.005 min  
 Response: 1722312  
 Conc: 48.12 ng/ml



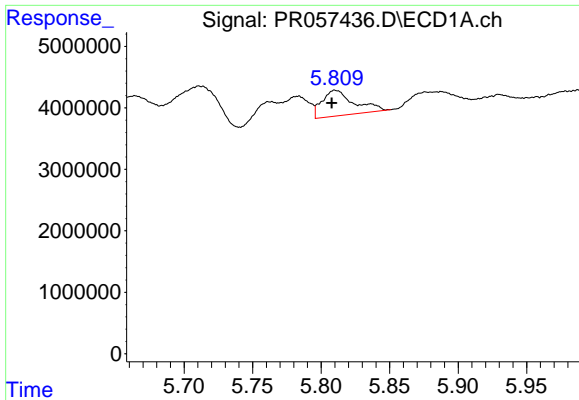
#24 AR-1248-4

R.T.: 5.783 min  
 Delta R.T.: 0.014 min  
 Response: 9043668  
 Conc: 79.20 ng/ml



#24 AR-1248-4

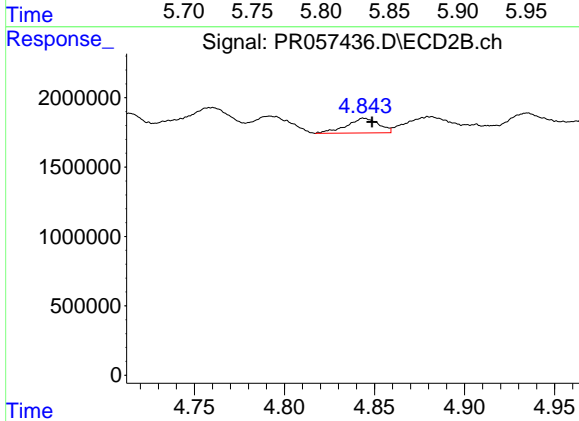
R.T.: 4.458 min  
 Delta R.T.: 0.016 min  
 Response: 2685104  
 Conc: 59.37 ng/ml



#25 AR-1248-5

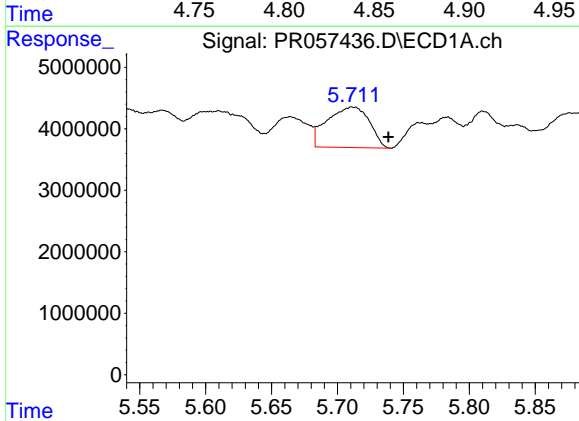
R.T.: 5.811 min  
 Delta R.T.: 0.003 min  
 Response: 6736710  
 Conc: 61.80 ng/ml

Instrument :  
 ECD\_R  
 ClientSampleId :  
 SV34211L



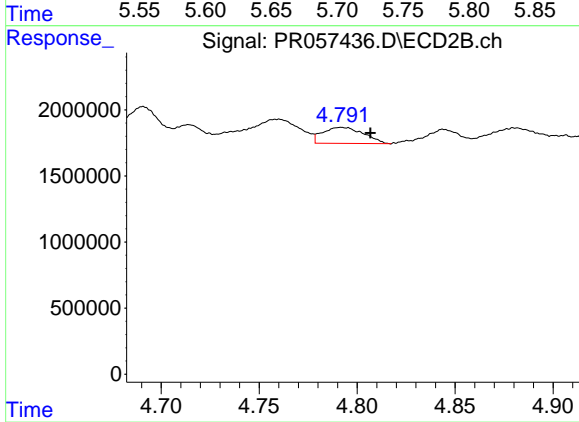
#25 AR-1248-5

R.T.: 4.844 min  
 Delta R.T.: -0.004 min  
 Response: 1315756  
 Conc: 27.40 ng/ml



#26 AR-1254-1

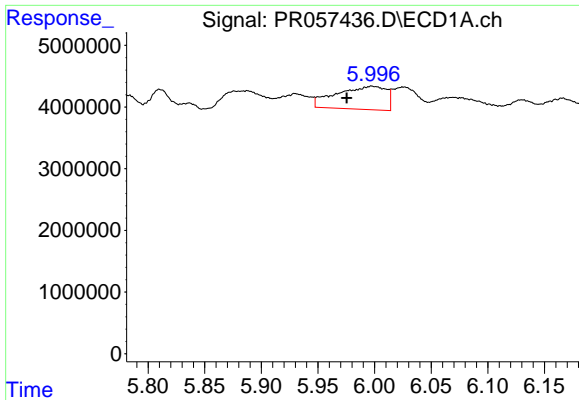
R.T.: 5.711 min  
 Delta R.T.: -0.027 min  
 Response: 14656373  
 Conc: 125.10 ng/ml



#26 AR-1254-1

R.T.: 4.792 min  
 Delta R.T.: -0.015 min  
 Response: 1773746  
 Conc: 26.52 ng/ml

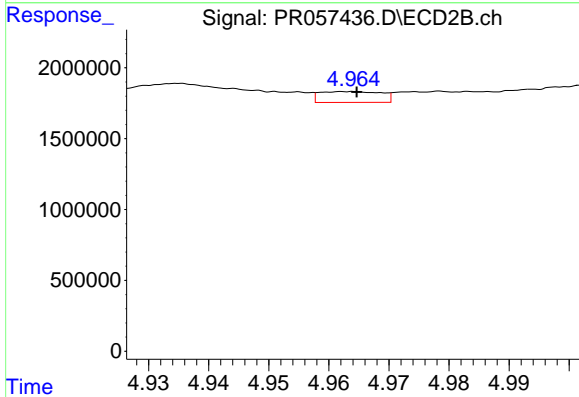




#27 AR-1254-2

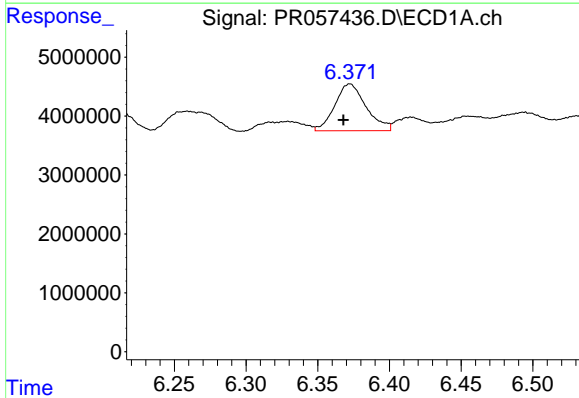
R.T.: 5.998 min  
 Delta R.T.: 0.023 min  
 Response: 11470947  
 Conc: 63.90 ng/ml

Instrument :  
 ECD\_R  
 ClientSampleId :  
 SV34211L



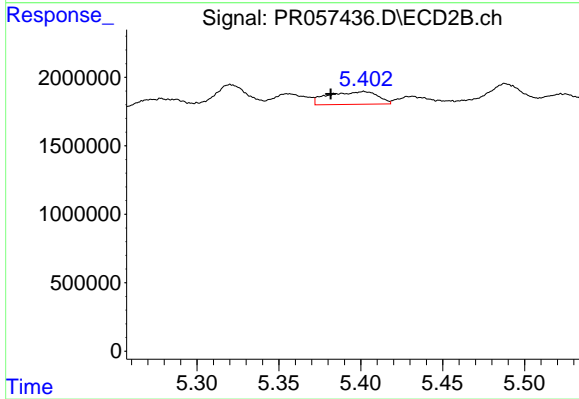
#27 AR-1254-2

R.T.: 4.963 min  
 Delta R.T.: -0.001 min  
 Response: 541647  
 Conc: 9.02 ng/ml



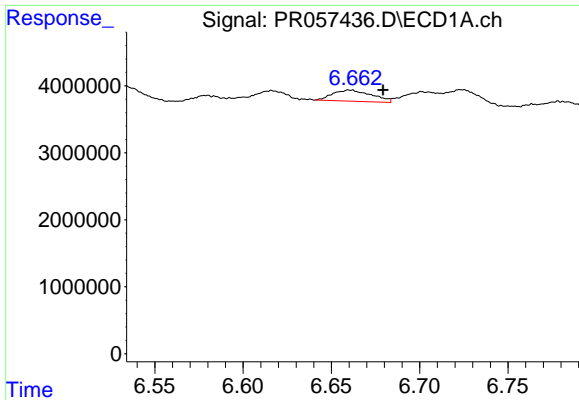
#28 AR-1254-3

R.T.: 6.372 min  
 Delta R.T.: 0.005 min  
 Response: 12080347  
 Conc: 66.32 ng/ml



#28 AR-1254-3

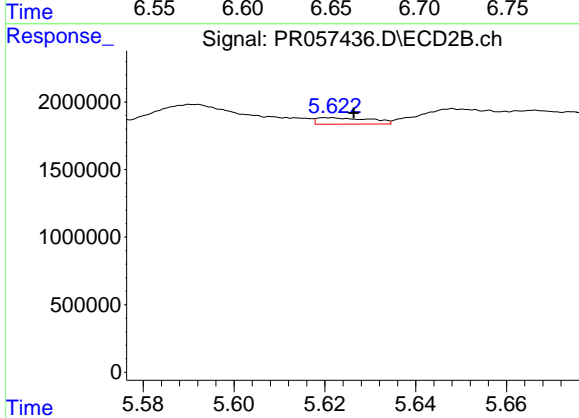
R.T.: 5.402 min  
 Delta R.T.: 0.020 min  
 Response: 1952793  
 Conc: 19.42 ng/ml



#29 AR-1254-4

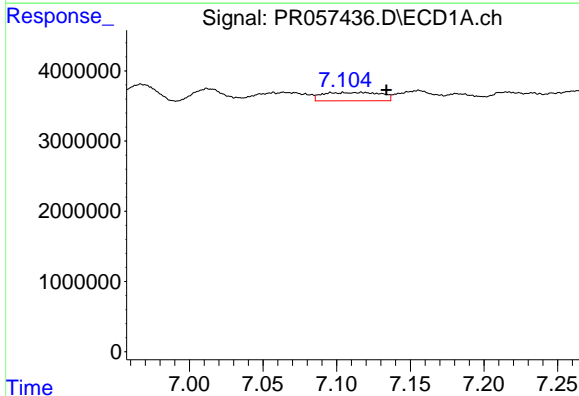
R.T.: 6.660 min  
 Delta R.T.: -0.019 min  
 Response: 2541192  
 Conc: 17.51 ng/ml

Instrument :  
 ECD\_R  
 ClientSampleId :  
 SV34211L



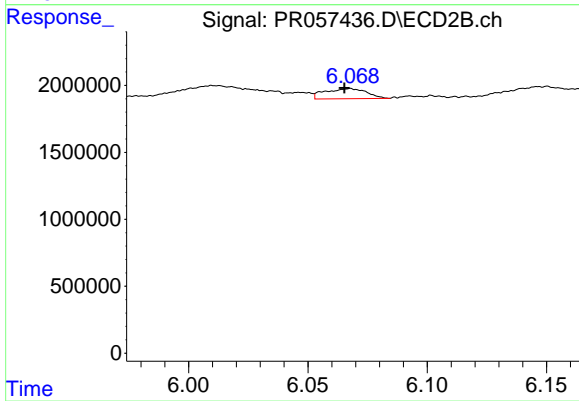
#29 AR-1254-4

R.T.: 5.621 min  
 Delta R.T.: -0.005 min  
 Response: 392218  
 Conc: 5.80 ng/ml



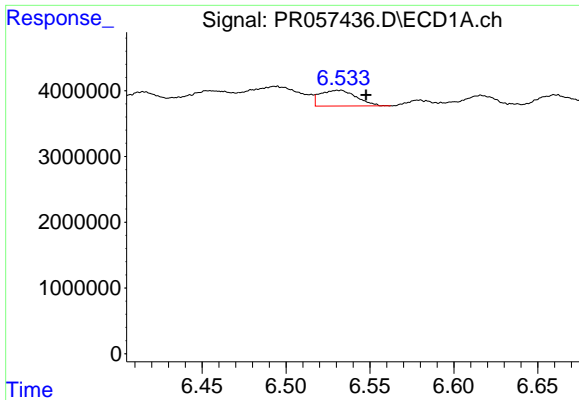
#30 AR-1254-5

R.T.: 7.117 min  
 Delta R.T.: -0.017 min  
 Response: 3247883  
 Conc: 21.25 ng/ml



#30 AR-1254-5

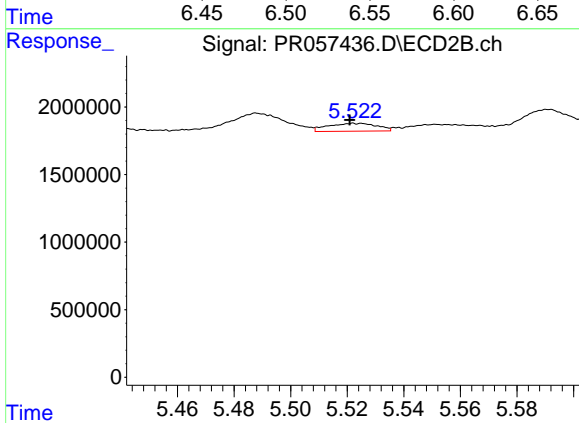
R.T.: 6.068 min  
 Delta R.T.: 0.002 min  
 Response: 918082  
 Conc: 9.13 ng/ml



#31 AR-1260-1

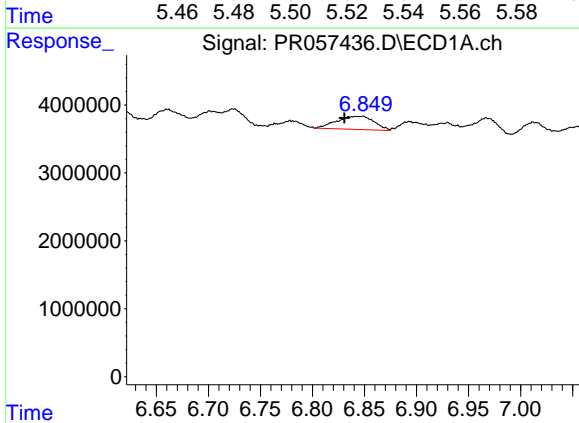
R.T.: 6.531 min  
 Delta R.T.: -0.017 min  
 Response: 3582756  
 Conc: 24.42 ng/ml

Instrument :  
 ECD\_R  
 ClientSampleId :  
 SV34211L



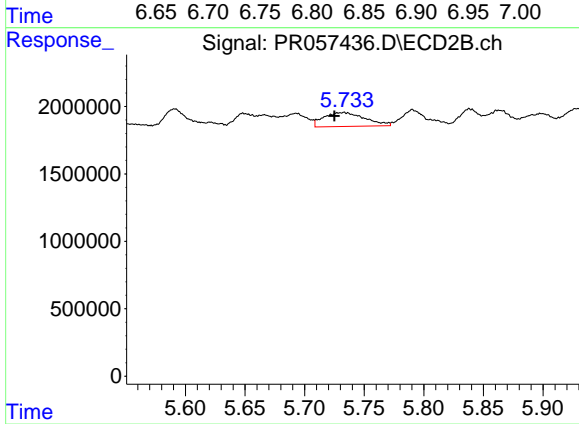
#31 AR-1260-1

R.T.: 5.523 min  
 Delta R.T.: 0.002 min  
 Response: 703224  
 Conc: 10.57 ng/ml



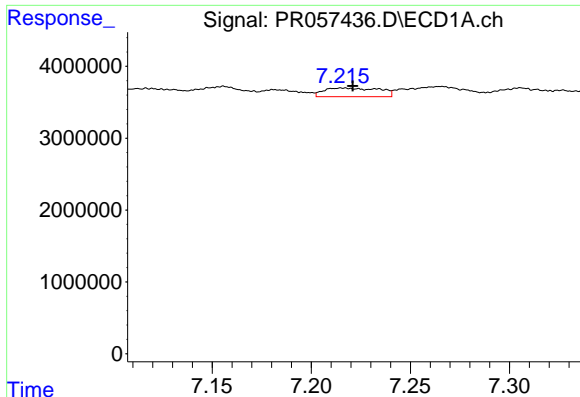
#32 AR-1260-2

R.T.: 6.846 min  
 Delta R.T.: 0.015 min  
 Response: 4811470  
 Conc: 27.42 ng/ml



#32 AR-1260-2

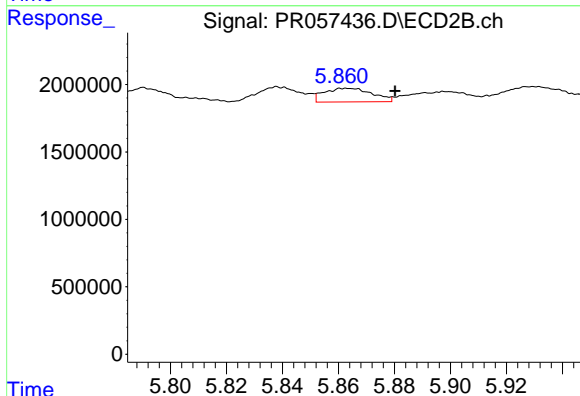
R.T.: 5.733 min  
 Delta R.T.: 0.008 min  
 Response: 2495254  
 Conc: 27.31 ng/ml



#33 AR-1260-3

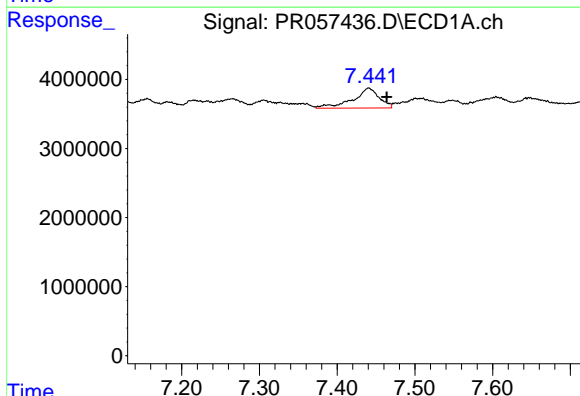
R.T.: 7.216 min  
 Delta R.T.: -0.005 min  
 Response: 2334437  
 Conc: 19.61 ng/ml

Instrument :  
 ECD\_R  
 ClientSampleId :  
 SV34211L



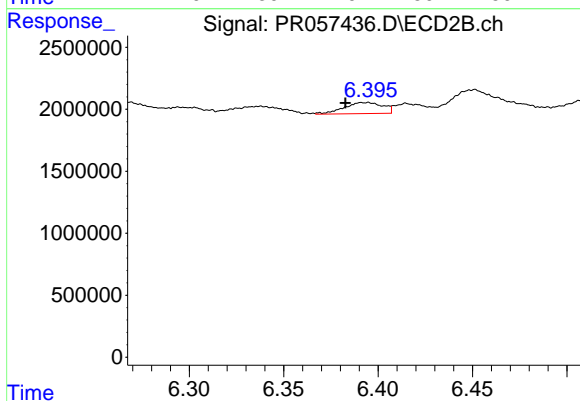
#33 AR-1260-3

R.T.: 5.863 min  
 Delta R.T.: -0.017 min  
 Response: 1211292  
 Conc: 14.34 ng/ml



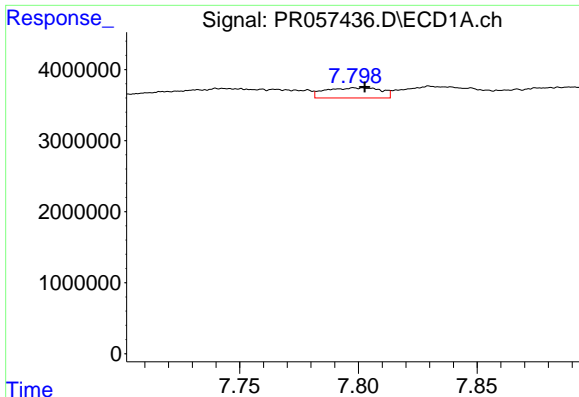
#34 AR-1260-4

R.T.: 7.441 min  
 Delta R.T.: -0.023 min  
 Response: 6716231  
 Conc: 51.42 ng/ml



#34 AR-1260-4

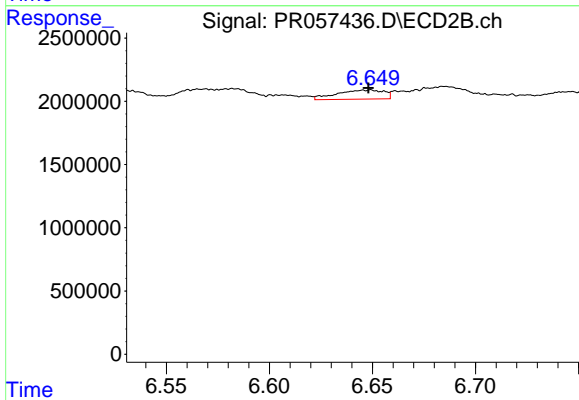
R.T.: 6.393 min  
 Delta R.T.: 0.011 min  
 Response: 1275281  
 Conc: 20.49 ng/ml



#35 AR-1260-5

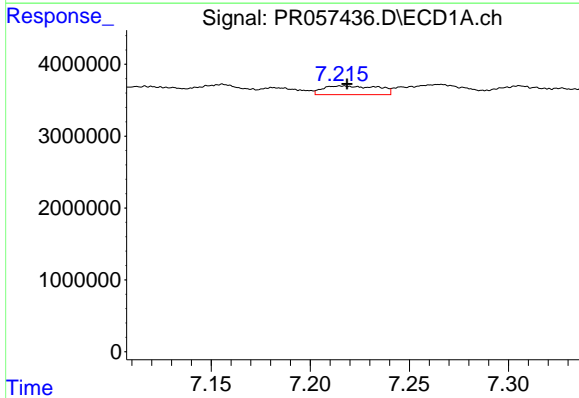
R.T.: 7.801 min  
 Delta R.T.: -0.002 min  
 Response: 2339828  
 Conc: 8.56 ng/ml

Instrument :  
 ECD\_R  
 ClientSampleId :  
 SV34211L



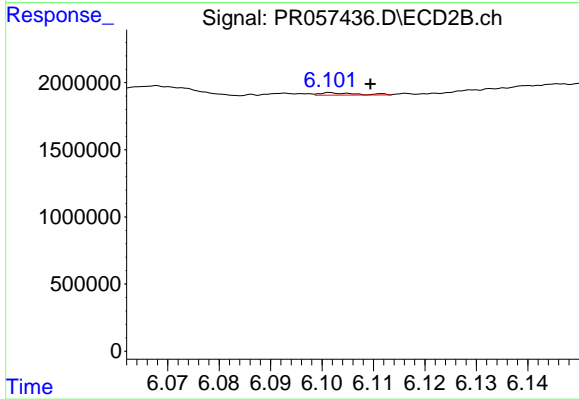
#35 AR-1260-5

R.T.: 6.649 min  
 Delta R.T.: 0.000 min  
 Response: 1162011  
 Conc: 6.61 ng/ml



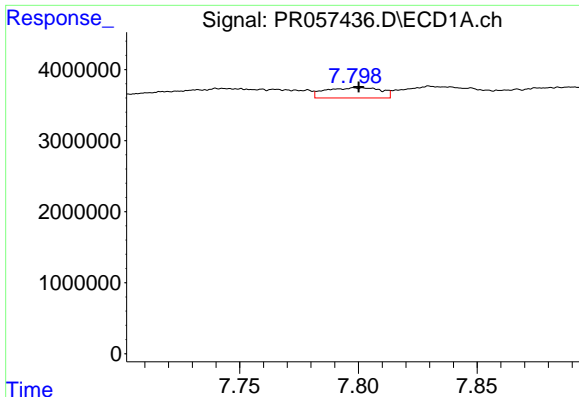
#36 AR-1262-1

R.T.: 7.216 min  
 Delta R.T.: -0.003 min  
 Response: 2334437  
 Conc: 12.80 ng/ml



#36 AR-1262-1

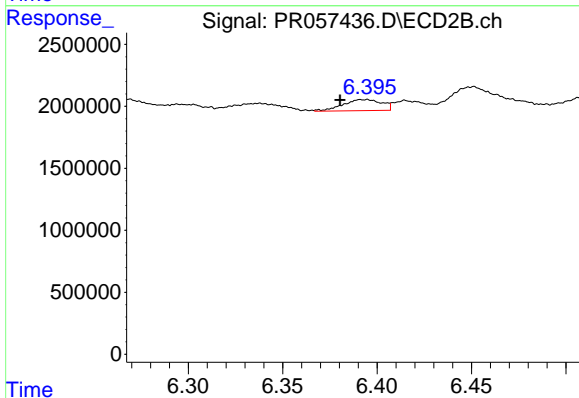
R.T.: 6.102 min  
 Delta R.T.: -0.007 min  
 Response: 86096  
 Conc: 0.89 ng/ml



#37 AR-1262-2

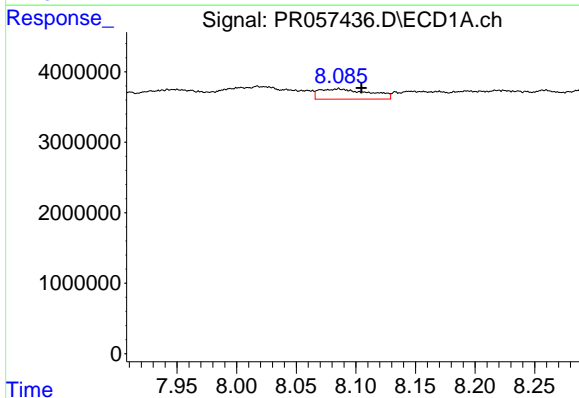
R.T.: 7.801 min  
 Delta R.T.: 0.000 min  
 Response: 2339828  
 Conc: 7.37 ng/ml

Instrument :  
 ECD\_R  
 ClientSampleId :  
 SV34211L



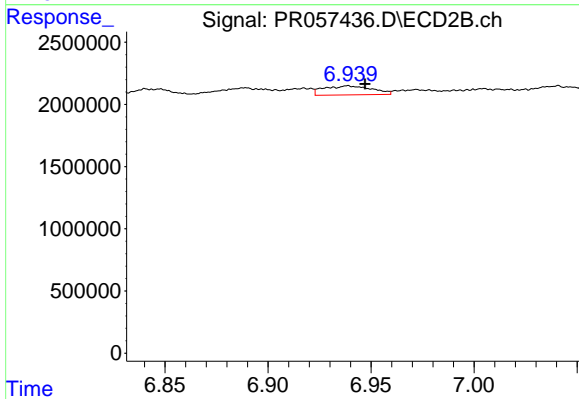
#37 AR-1262-2

R.T.: 6.393 min  
 Delta R.T.: 0.013 min  
 Response: 1275281  
 Conc: 15.56 ng/ml



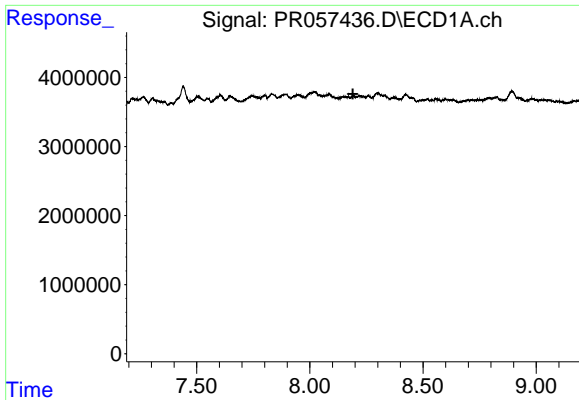
#38 AR-1262-3

R.T.: 8.086 min  
 Delta R.T.: -0.019 min  
 Response: 4290724  
 Conc: 20.07 ng/ml



#38 AR-1262-3

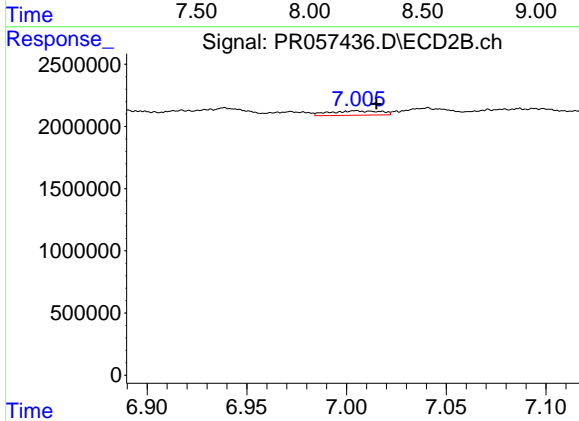
R.T.: 6.939 min  
 Delta R.T.: -0.008 min  
 Response: 1183046  
 Conc: 14.74 ng/ml



#39 AR-1262-4

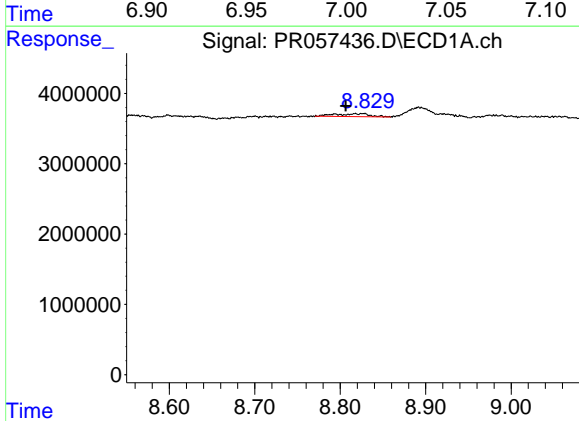
R.T.: 0.000 min  
 Exp R.T.: 8.190 min  
 Response: 0  
 Conc: N.D.

Instrument :  
 ECD\_R  
 ClientSampleId :  
 SV34211L



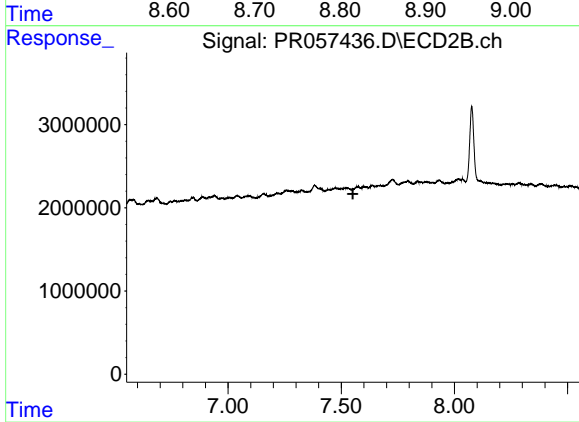
#39 AR-1262-4

R.T.: 7.005 min  
 Delta R.T.: -0.010 min  
 Response: 639855  
 Conc: 4.37 ng/ml



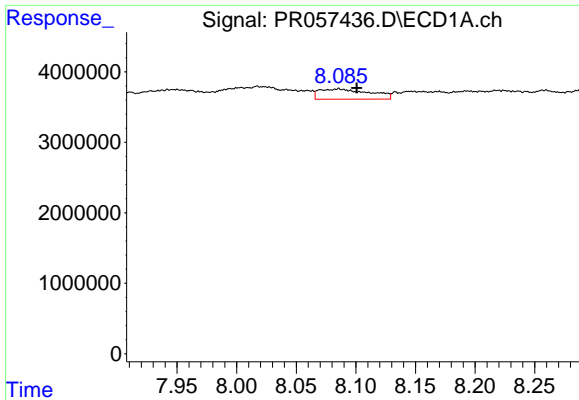
#40 AR-1262-5

R.T.: 8.819 min  
 Delta R.T.: 0.012 min  
 Response: 1189962  
 Conc: 10.63 ng/ml



#40 AR-1262-5

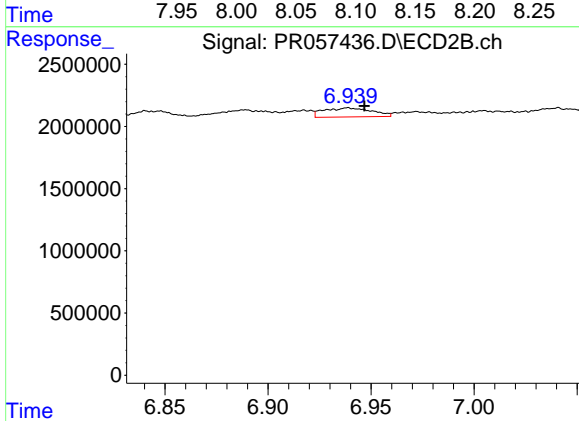
R.T.: 7.575 min  
 Delta R.T.: 0.024 min  
 Response: -65122  
 Conc: N.D.



#41 AR-1268-1

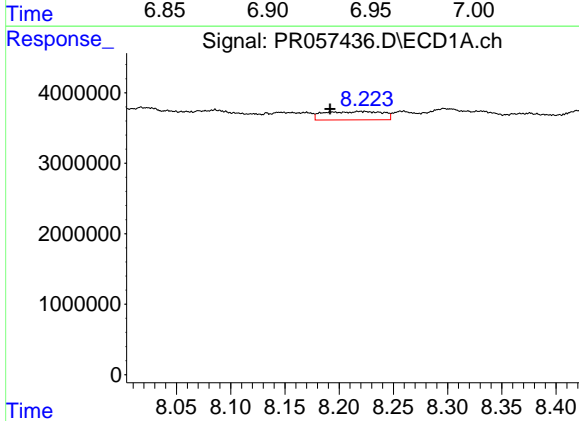
R.T.: 8.086 min  
 Delta R.T.: -0.015 min  
 Response: 4290724  
 Conc: 10.71 ng/ml

Instrument :  
 ECD\_R  
 ClientSampleId :  
 SV34211L



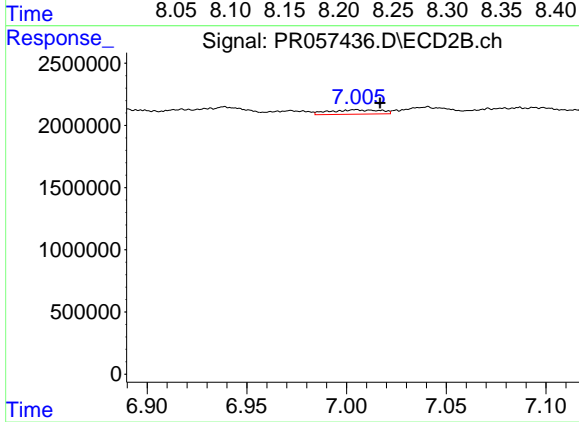
#41 AR-1268-1

R.T.: 6.939 min  
 Delta R.T.: -0.008 min  
 Response: 1183046  
 Conc: 4.72 ng/ml



#42 AR-1268-2

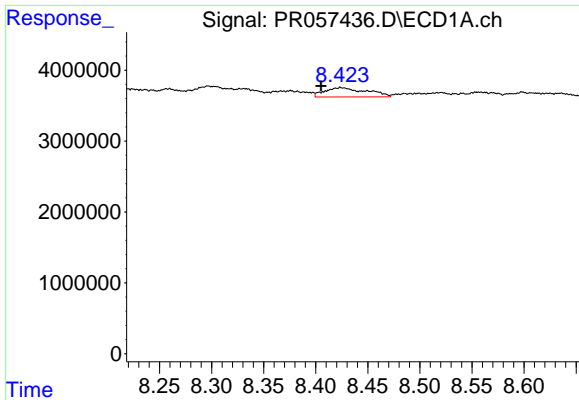
R.T.: 8.220 min  
 Delta R.T.: 0.029 min  
 Response: 4461269  
 Conc: 12.13 ng/ml



#42 AR-1268-2

R.T.: 7.005 min  
 Delta R.T.: -0.012 min  
 Response: 639855  
 Conc: 2.65 ng/ml

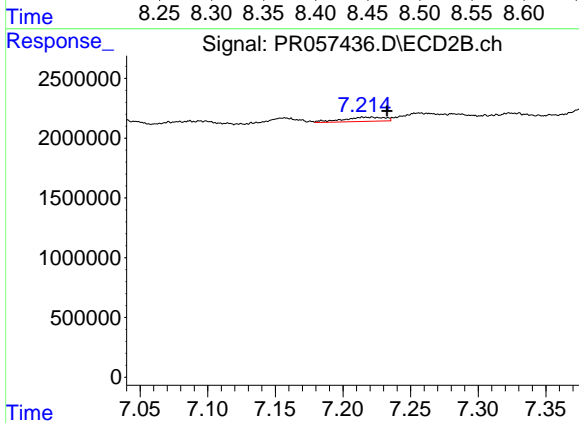




#43 AR-1268-3

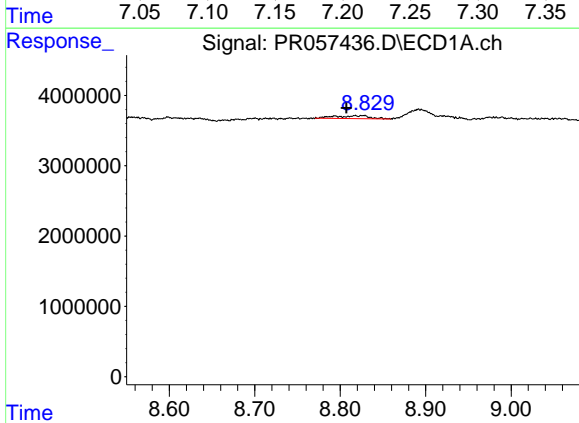
R.T.: 8.424 min  
 Delta R.T.: 0.019 min  
 Response: 3674558  
 Conc: 11.58 ng/ml

Instrument :  
 ECD\_R  
 ClientSampleId :  
 SV34211L



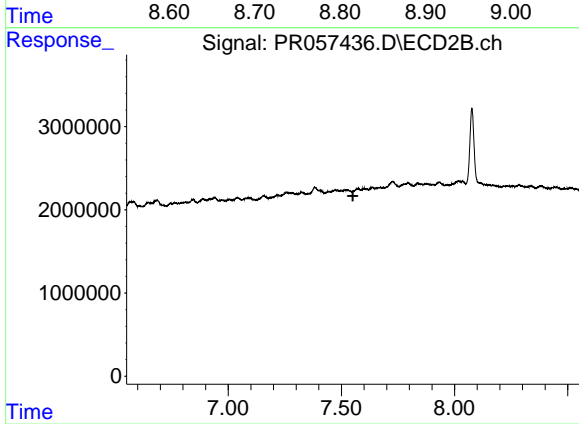
#43 AR-1268-3

R.T.: 7.221 min  
 Delta R.T.: -0.011 min  
 Response: 773282  
 Conc: 3.67 ng/ml



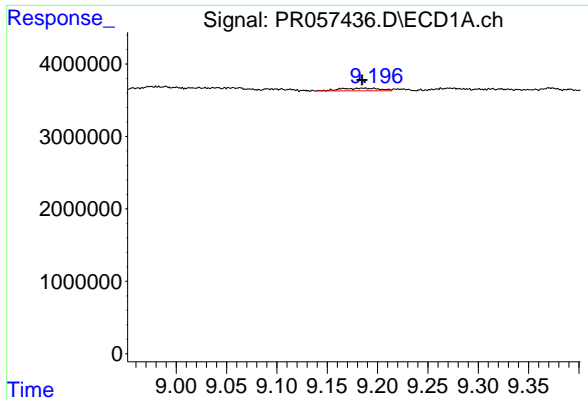
#44 AR-1268-4

R.T.: 8.819 min  
 Delta R.T.: 0.011 min  
 Response: 1189962  
 Conc: 8.96 ng/ml



#44 AR-1268-4

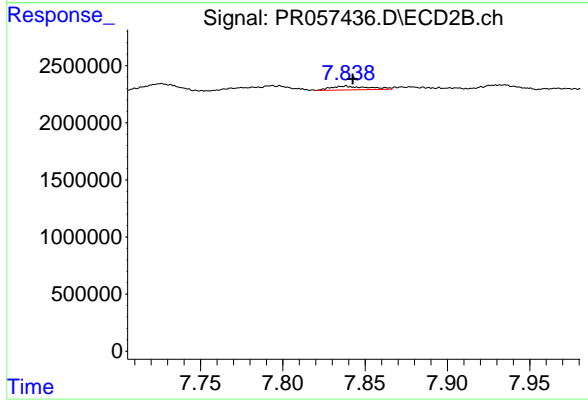
R.T.: 7.575 min  
 Delta R.T.: 0.024 min  
 Response: -65122  
 Conc: N.D.



#45 AR-1268-5

R.T.: 9.185 min  
 Delta R.T.: 0.000 min  
 Response: 991015  
 Conc: 1.02 ng/ml

Instrument :  
 ECD\_R  
 ClientSampleId :  
 SV34211L



#45 AR-1268-5

R.T.: 7.838 min  
 Delta R.T.: -0.004 min  
 Response: 536503  
 Conc: 0.79 ng/ml