

Data Path : Z:\pestpcbsrv\HPCHEM1\ECD_R\Data\PR101724\
 Data File : PR068742.D
 Signal(s) : Signal #1: ECD1A.ch Signal #2: ECD2B.ch
 Acq On : 16 Oct 2024 21:07
 Operator : AJ\MA
 Sample : P4368-02
 Misc : AR1232 LOQ 50 PPB
 ALS Vial : 28 Sample Multiplier: 1

Instrument :
 ECD_R
ClientSampleId :
 LOQ-SOIL-02-QT4-2024

Integration File signal 1: autoint1.e
 Integration File signal 2: autoint2.e
 Quant Time: Oct 17 01:44:59 2024
 Quant Method : Z:\pestpcbsrv\HPCHEM1\ECD_R\Method\PR101624.M
 Quant Title : GC EXTRACTABLES
 QLast Update : Wed Oct 16 13:42:17 2024
 Response via : Initial Calibration
 Integrator: ChemStation

Volume Inj. : 2 µl
 Signal #1 Phase : ZB-MR1 Signal #2 Phase: ZB-MR2
 Signal #1 Info : 30Mx0.32mmx 0.50µ Signal #2 Info : 30M x 0.32mm x 0.25µm

| Compound | RT#1 | RT#2 | Resp#1 | Resp#2 | ng/ml | ng/ml |
|-----------------------------|-------|-------|----------|----------|--------|--------|
| ----- | | | | | | |
| System Monitoring Compounds | | | | | | |
| 1) SA Tetrachlo... | 3.648 | 2.979 | 13617762 | 87727481 | 14.524 | 15.768 |
| 2) SA Decachlor... | 9.543 | 8.269 | 8714138 | 64574685 | 15.102 | 15.138 |
| Target Compounds | | | | | | |
| 11) L3 AR-1232-1 | 4.037 | 3.367 | 890560 | 5310323 | 43.118 | 44.283 |
| 12) L3 AR-1232-2 | 4.585 | 4.121 | 499361 | 4684459 | 46.317 | 41.535 |
| 13) L3 AR-1232-3 | 4.892 | 4.301 | 835298 | 2424267 | 43.197 | 41.154 |
| 14) L3 AR-1232-4 | 5.058 | 4.395 | 431899 | 2112938 | 44.386 | 41.212 |
| 15) L3 AR-1232-5 | 5.161 | 4.572 | 319824 | 2283361 | 45.273 | 41.125 |
| ----- | | | | | | |

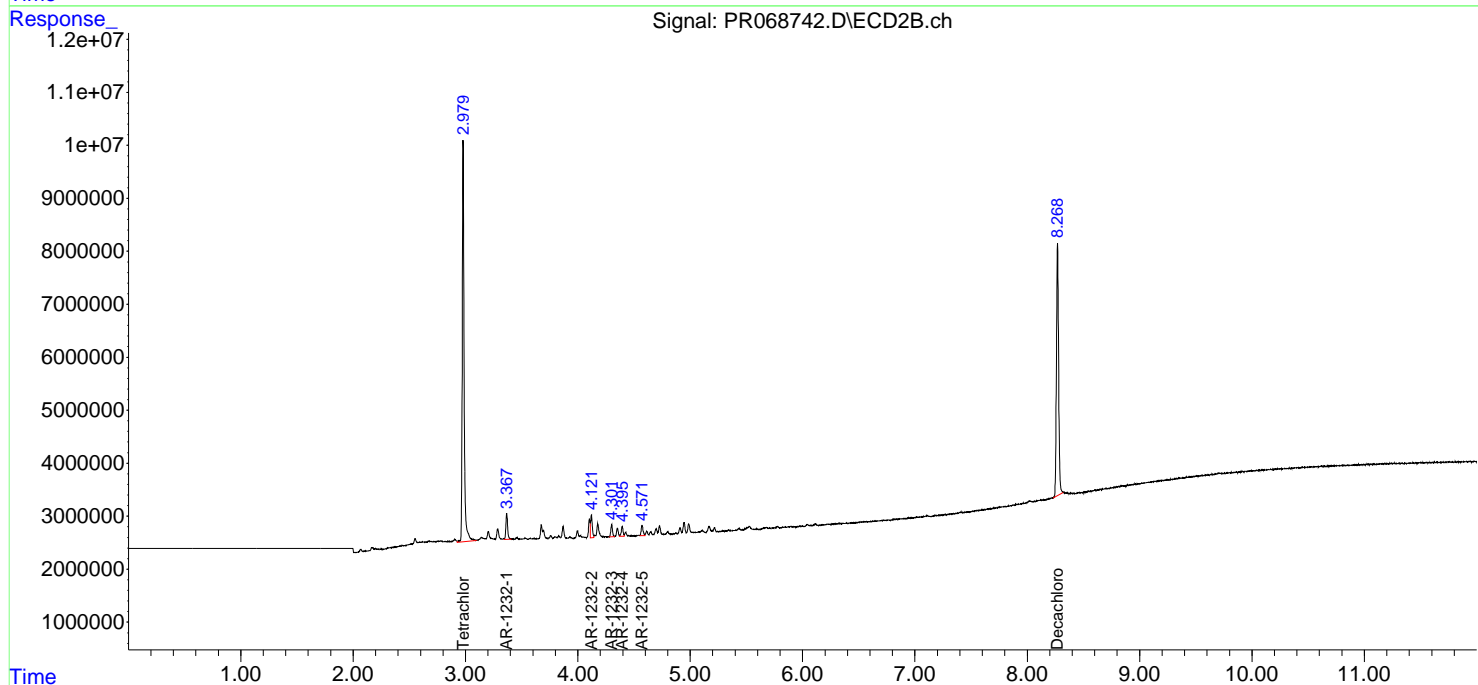
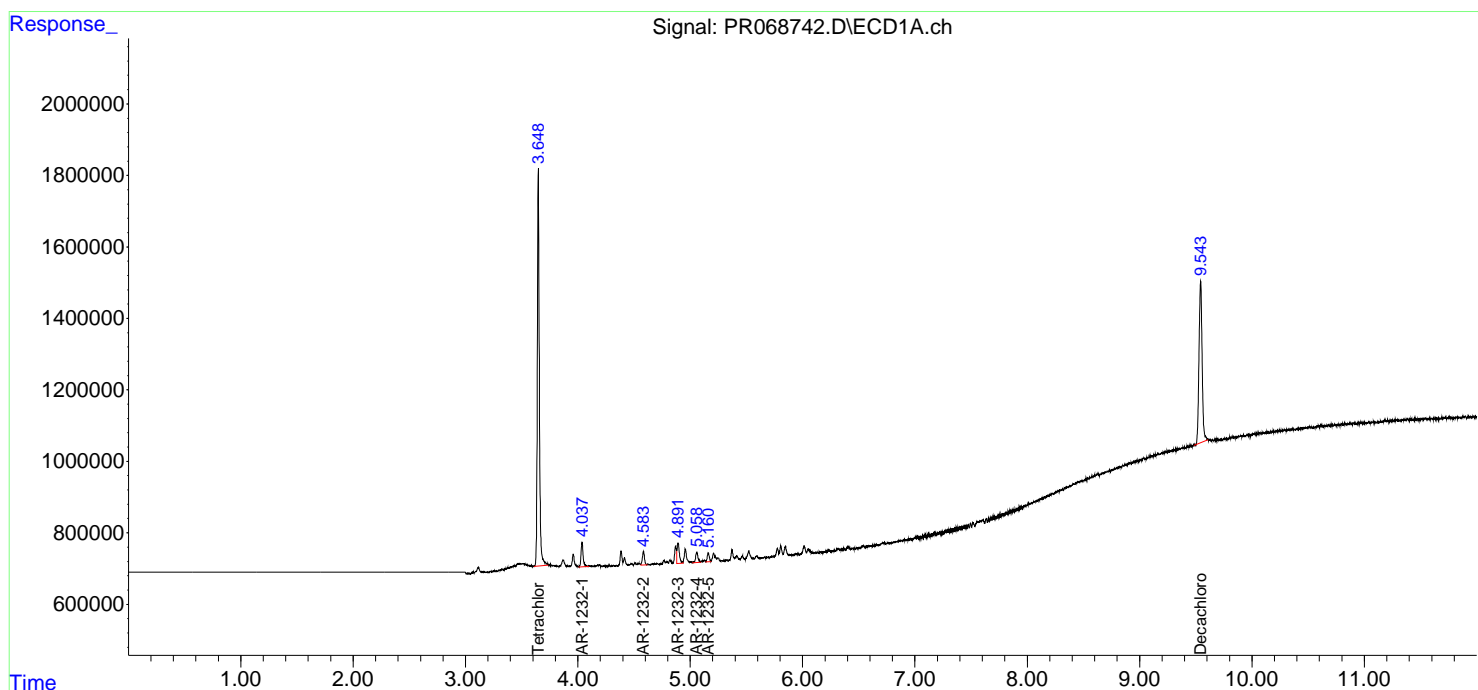
(f)=RT Delta > 1/2 Window (#)=Amounts differ by > 25% (m)=manual int.

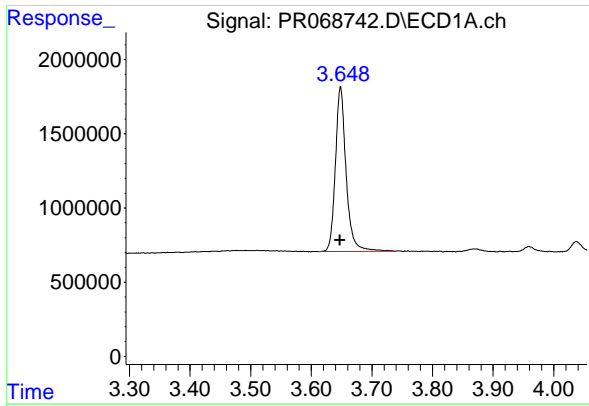
Data Path : Z:\pestpcbsrv\HPCHEM1\ECD_R\Data\PR101724\
 Data File : PR068742.D
 Signal(s) : Signal #1: ECD1A.ch Signal #2: ECD2B.ch
 Acq On : 16 Oct 2024 21:07
 Operator : AJ\MA
 Sample : P4368-02
 Misc : AR1232 LOQ 50 PPB
 ALS Vial : 28 Sample Multiplier: 1

Instrument :
 ECD_R
 ClientSampleId :
 LOQ-SOIL-02-QT4-2024

Integration File signal 1: autoint1.e
 Integration File signal 2: autoint2.e
 Quant Time: Oct 17 01:44:59 2024
 Quant Method : Z:\pestpcbsrv\HPCHEM1\ECD_R\Method\PR101624.M
 Quant Title : GC EXTRACTABLES
 QLast Update : Wed Oct 16 13:42:17 2024
 Response via : Initial Calibration
 Integrator: ChemStation

Volume Inj. : 2 µl
 Signal #1 Phase : ZB-MR1 Signal #2 Phase: ZB-MR2
 Signal #1 Info : 30Mx0.32mmx 0.50µm Signal #2 Info : 30M x 0.32mm x 0.25µm

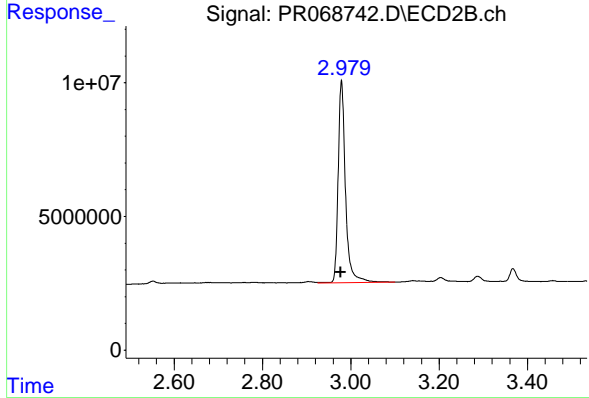




#1 Tetrachloro-m-xylene

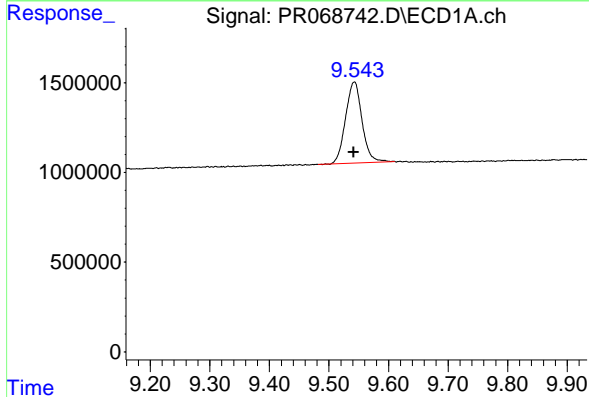
R.T.: 3.648 min
 Delta R.T.: 0.001 min
 Response: 13617762
 Conc: 14.52 ng/ml

Instrument : ECD_R
 ClientSampleId : LOQ-SOIL-02-QT4-2024



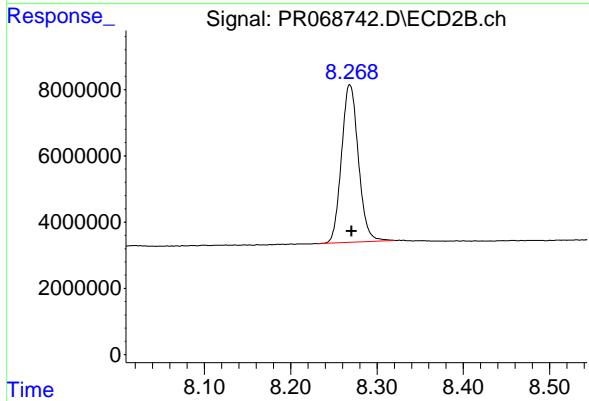
#1 Tetrachloro-m-xylene

R.T.: 2.979 min
 Delta R.T.: 0.001 min
 Response: 87727481
 Conc: 15.77 ng/ml



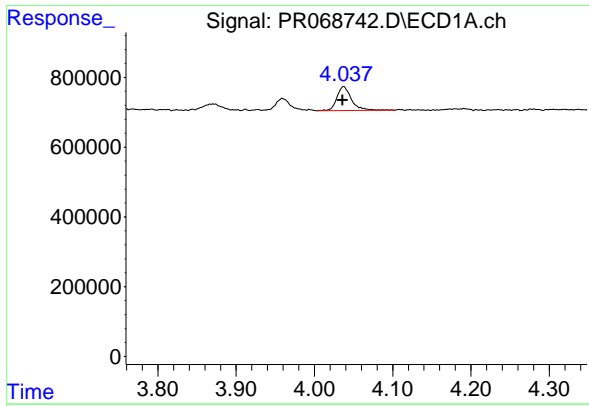
#2 Decachlorobiphenyl

R.T.: 9.543 min
 Delta R.T.: 0.001 min
 Response: 8714138
 Conc: 15.10 ng/ml



#2 Decachlorobiphenyl

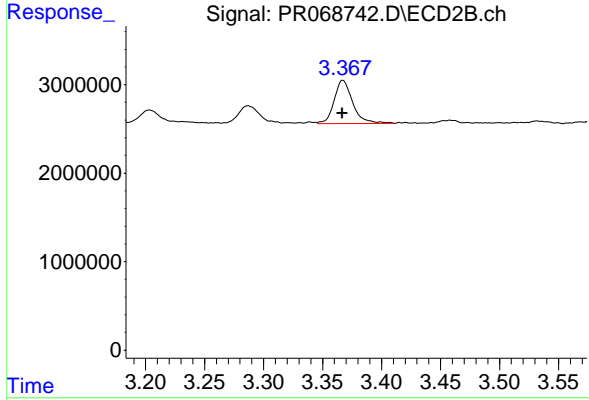
R.T.: 8.269 min
 Delta R.T.: -0.002 min
 Response: 64574685
 Conc: 15.14 ng/ml



#11 AR-1232-1

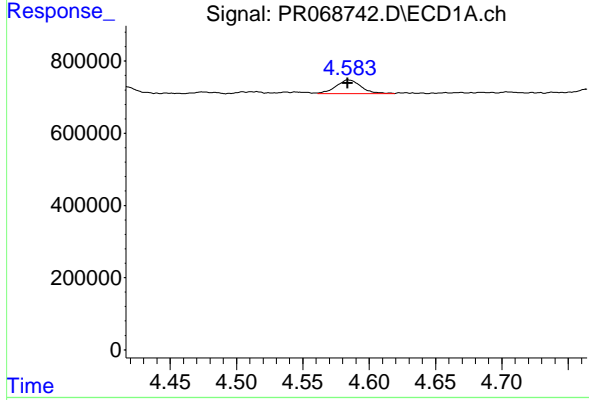
R.T.: 4.037 min
 Delta R.T.: 0.001 min
 Response: 890560
 Conc: 43.12 ng/ml

Instrument : ECD_R
 ClientSampleId : LOQ-SOIL-02-QT4-2024



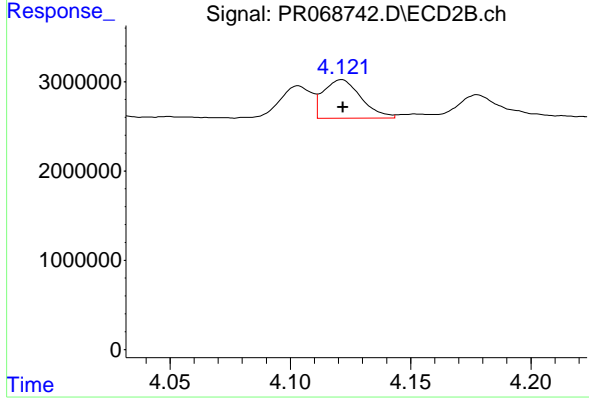
#11 AR-1232-1

R.T.: 3.367 min
 Delta R.T.: 0.000 min
 Response: 5310323
 Conc: 44.28 ng/ml



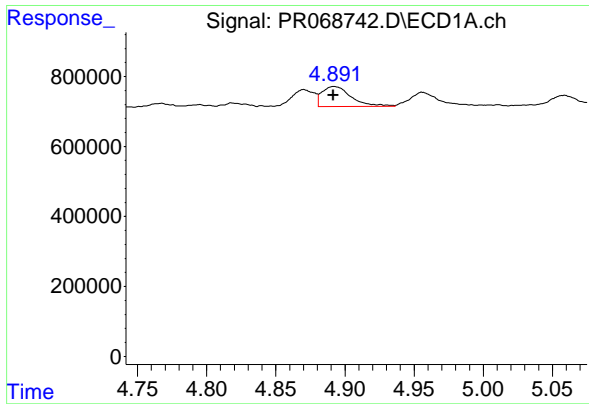
#12 AR-1232-2

R.T.: 4.585 min
 Delta R.T.: 0.000 min
 Response: 499361
 Conc: 46.32 ng/ml



#12 AR-1232-2

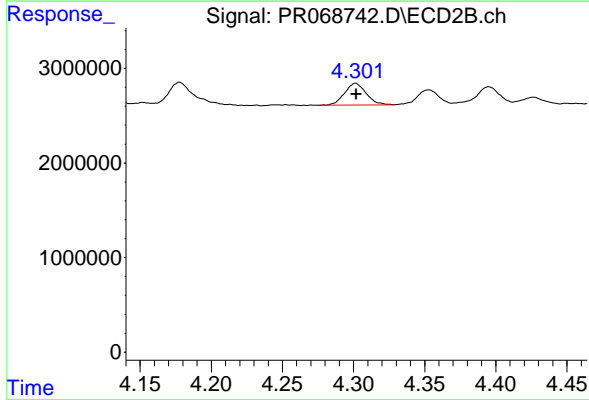
R.T.: 4.121 min
 Delta R.T.: 0.000 min
 Response: 4684459
 Conc: 41.54 ng/ml



#13 AR-1232-3

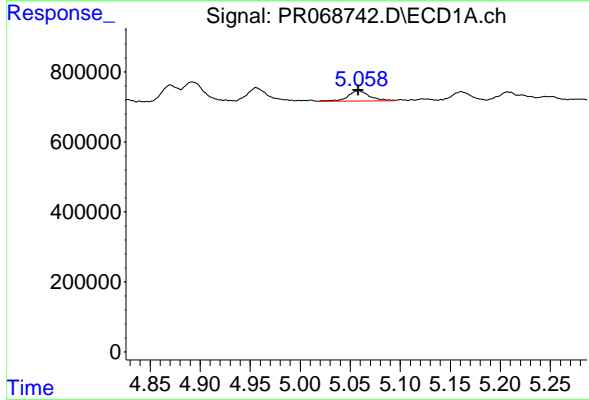
R.T.: 4.892 min
 Delta R.T.: 0.000 min
 Response: 835298
 Conc: 43.20 ng/ml

Instrument : ECD_R
 ClientSampleId : LOQ-SOIL-02-QT4-2024



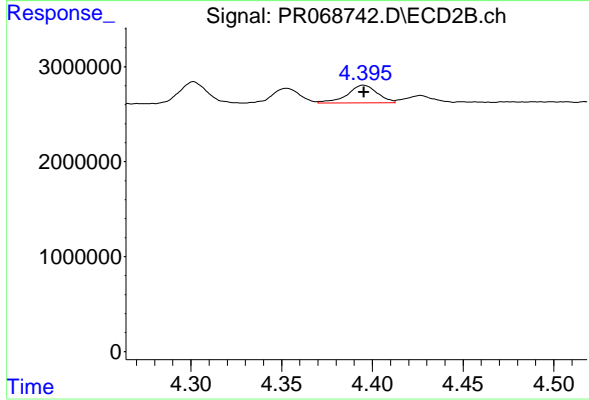
#13 AR-1232-3

R.T.: 4.301 min
 Delta R.T.: 0.000 min
 Response: 2424267
 Conc: 41.15 ng/ml



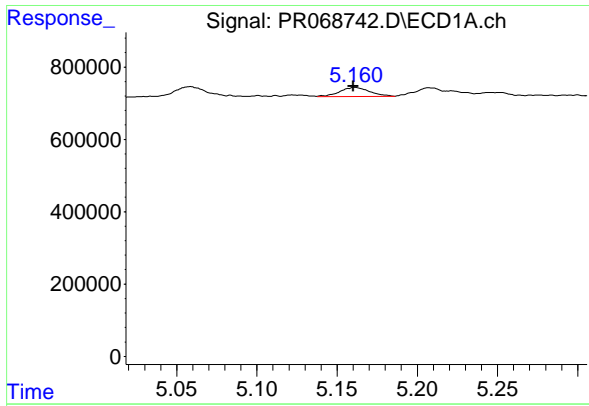
#14 AR-1232-4

R.T.: 5.058 min
 Delta R.T.: 0.000 min
 Response: 431899
 Conc: 44.39 ng/ml



#14 AR-1232-4

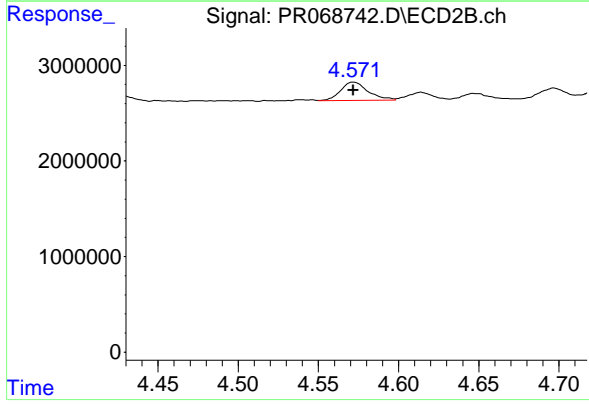
R.T.: 4.395 min
 Delta R.T.: 0.000 min
 Response: 2112938
 Conc: 41.21 ng/ml



#15 AR-1232-5

R.T.: 5.161 min
 Delta R.T.: 0.000 min
 Response: 319824
 Conc: 45.27 ng/ml

Instrument :
 ECD_R
 ClientSampleId :
 LOQ-SOIL-02-QT4-2024



#15 AR-1232-5

R.T.: 4.572 min
 Delta R.T.: 0.000 min
 Response: 2283361
 Conc: 41.12 ng/ml