

Data Path : Z:\pestpcbsrv\HPCHEM1\ECD\_R\Data\PR101724\  
 Data File : PR068745.D  
 Signal(s) : Signal #1: ECD1A.ch Signal #2: ECD2B.ch  
 Acq On : 16 Oct 2024 21:51  
 Operator : AJ\MA  
 Sample : P4368-02  
 Misc : AR1254 LOQ 50 PPB  
 ALS Vial : 31 Sample Multiplier: 1

**Instrument :**  
 ECD\_R  
**ClientSampleId :**  
 LOQ-SOIL-02-QT4-2024

Integration File signal 1: autoint1.e  
 Integration File signal 2: autoint2.e  
 Quant Time: Oct 17 01:47:07 2024  
 Quant Method : Z:\pestpcbsrv\HPCHEM1\ECD\_R\Method\PR101624.M  
 Quant Title : GC EXTRACTABLES  
 QLast Update : Wed Oct 16 13:42:17 2024  
 Response via : Initial Calibration  
 Integrator: ChemStation

Volume Inj. : 2 µl  
 Signal #1 Phase : ZB-MR1 Signal #2 Phase: ZB-MR2  
 Signal #1 Info : 30Mx0.32mmx 0.50µ Signal #2 Info : 30M x 0.32mm x 0.25µm

Compound	RT#1	RT#2	Resp#1	Resp#2	ng/ml	ng/ml
-----						
System Monitoring Compounds						
1) SA Tetrachlo...	3.648	2.979	14945709	94287780	15.940	16.947
2) SA Decachlor...	9.538	8.269	9558610	69992838	16.565	16.408
Target Compounds						
26) L6 AR-1254-1	5.775	4.944	1635263	12102378	48.606	46.544
27) L6 AR-1254-2	6.012	5.105	2479956	10671369	48.675	47.235
28) L6 AR-1254-3	6.405	5.530	2409642	17184941	46.323	49.409
29) L6 AR-1254-4	6.716	5.777	1652472	9128879	46.184	44.503
30) L6 AR-1254-5	7.171	6.224	1795169	13195306	45.157	43.947
-----						

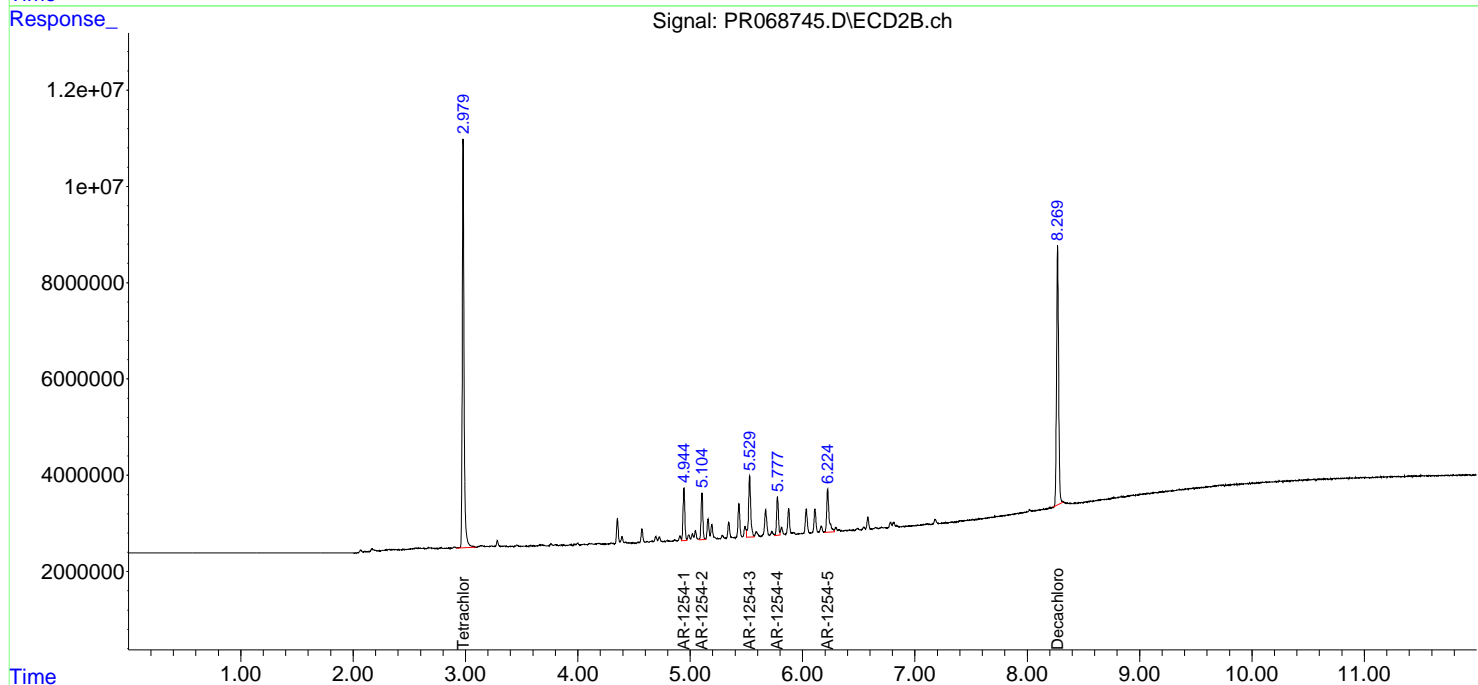
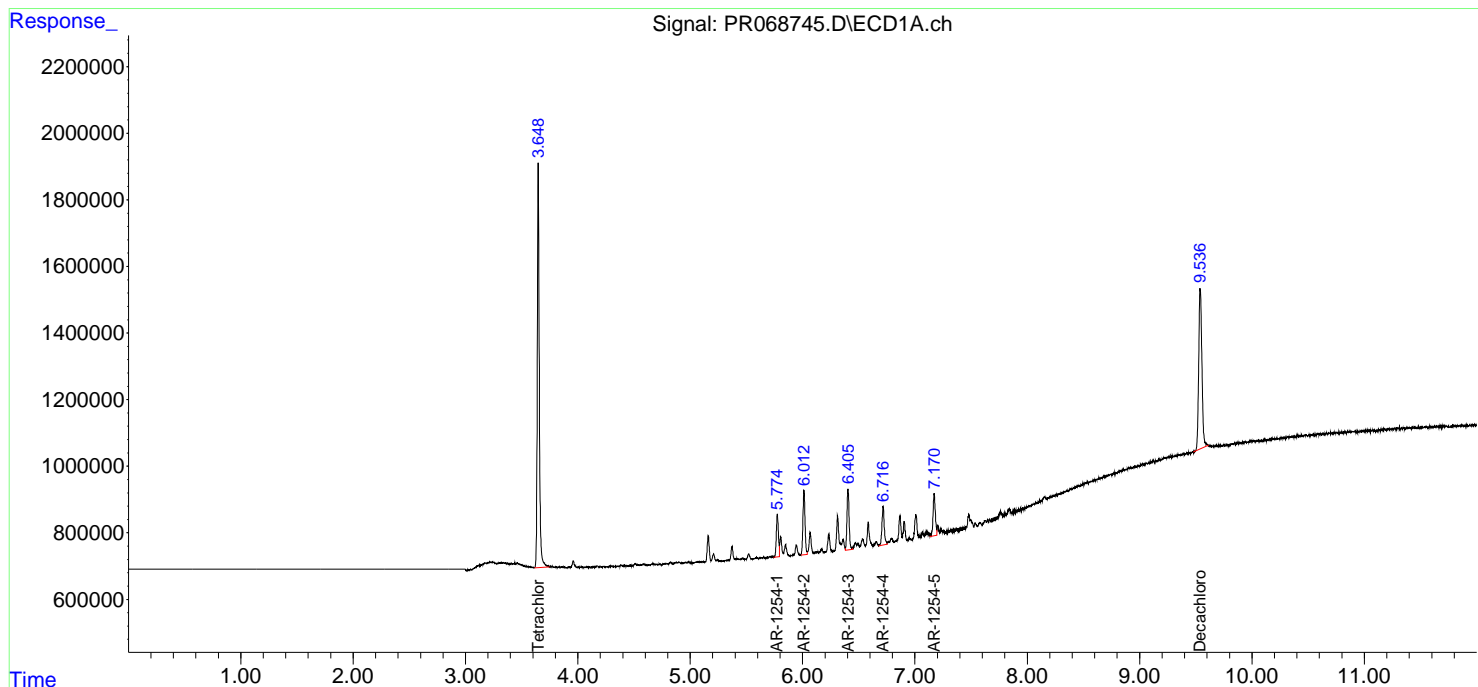
(f)=RT Delta > 1/2 Window (#)=Amounts differ by > 25% (m)=manual int.

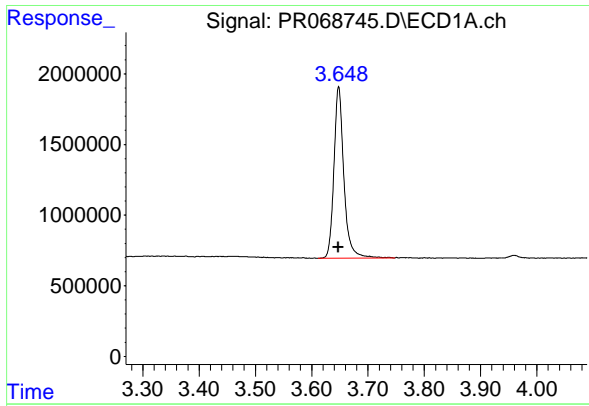
Data Path : Z:\pestpcbsrv\HPCHEM1\ECD\_R\Data\PR101724\  
Data File : PR068745.D  
Signal(s) : Signal #1: ECD1A.ch Signal #2: ECD2B.ch  
Acq On : 16 Oct 2024 21:51  
Operator : AJ\MA  
Sample : P4368-02  
Misc : AR1254 LOQ 50 PPB  
ALS Vial : 31 Sample Multiplier: 1

Instrument :  
ECD\_R  
ClientSampleId :  
LOQ-SOIL-02-QT4-2024

Integration File signal 1: autoint1.e  
Integration File signal 2: autoint2.e  
Quant Time: Oct 17 01:47:07 2024  
Quant Method : Z:\pestpcbsrv\HPCHEM1\ECD\_R\Method\PR101624.M  
Quant Title : GC EXTRACTABLES  
QLast Update : Wed Oct 16 13:42:17 2024  
Response via : Initial Calibration  
Integrator: ChemStation

Volume Inj. : 2 µl  
Signal #1 Phase : ZB-MR1 Signal #2 Phase: ZB-MR2  
Signal #1 Info : 30Mx0.32mmx 0.50µm Signal #2 Info : 30M x 0.32mm x 0.25µm

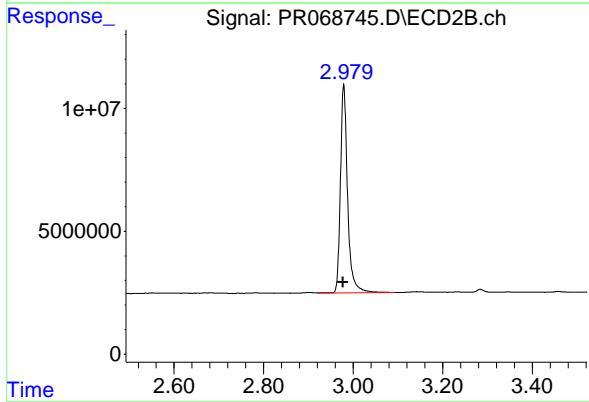




#1 Tetrachloro-m-xylene

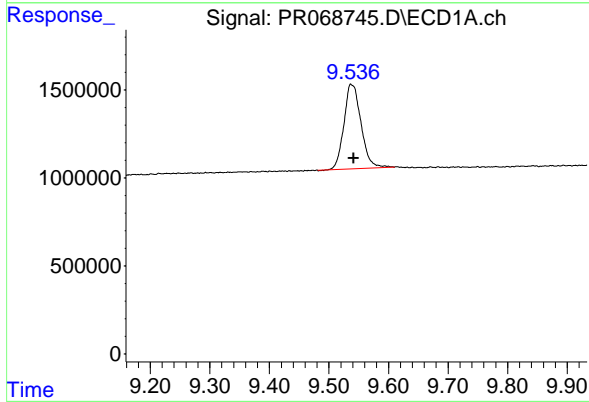
R.T.: 3.648 min  
 Delta R.T.: 0.000 min  
 Response: 14945709  
 Conc: 15.94 ng/ml

Instrument : ECD\_R  
 ClientSampleId : LOQ-SOIL-02-QT4-2024



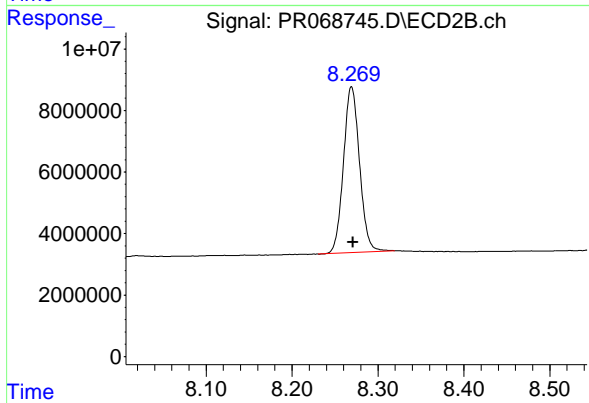
#1 Tetrachloro-m-xylene

R.T.: 2.979 min  
 Delta R.T.: 0.001 min  
 Response: 94287780  
 Conc: 16.95 ng/ml



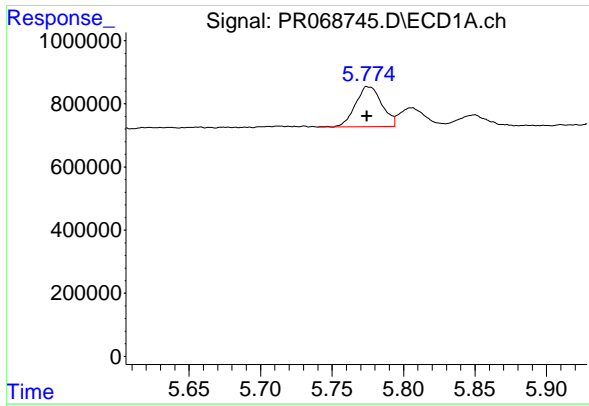
#2 Decachlorobiphenyl

R.T.: 9.538 min  
 Delta R.T.: -0.003 min  
 Response: 9558610  
 Conc: 16.57 ng/ml



#2 Decachlorobiphenyl

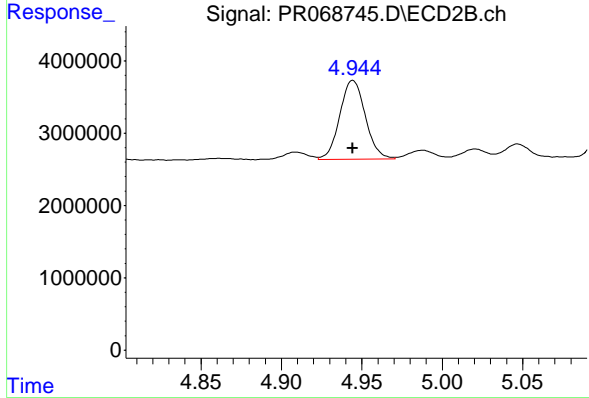
R.T.: 8.269 min  
 Delta R.T.: -0.002 min  
 Response: 69992838  
 Conc: 16.41 ng/ml



#26 AR-1254-1

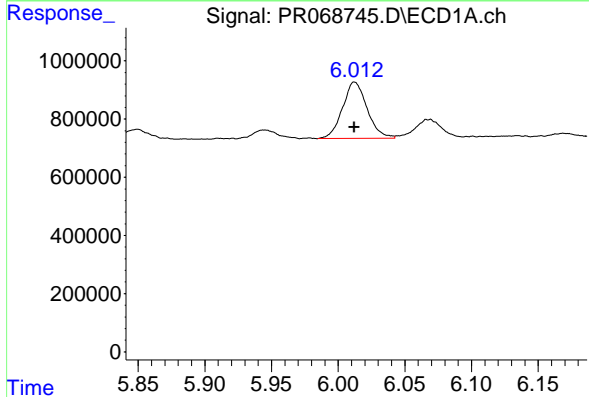
R.T.: 5.775 min  
 Delta R.T.: 0.000 min  
 Response: 1635263  
 Conc: 48.61 ng/ml

Instrument : ECD\_R  
 ClientSampleId : LOQ-SOIL-02-QT4-2024



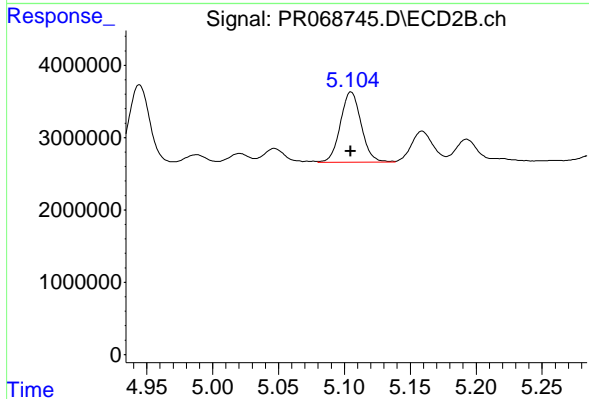
#26 AR-1254-1

R.T.: 4.944 min  
 Delta R.T.: 0.000 min  
 Response: 12102378  
 Conc: 46.54 ng/ml



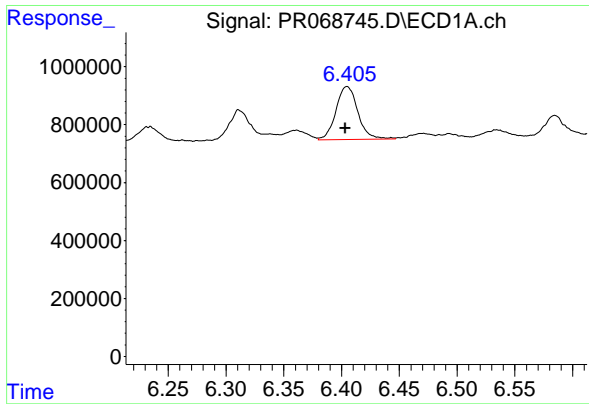
#27 AR-1254-2

R.T.: 6.012 min  
 Delta R.T.: 0.000 min  
 Response: 2479956  
 Conc: 48.68 ng/ml



#27 AR-1254-2

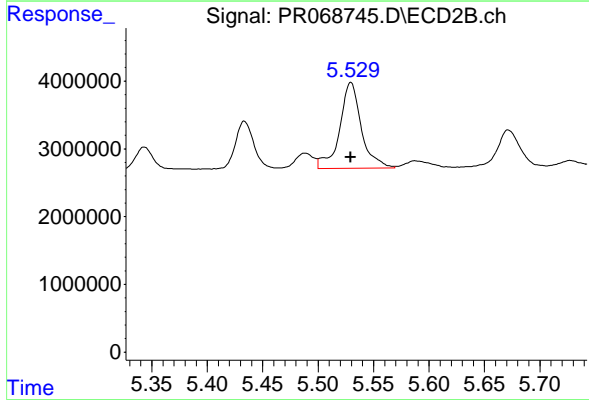
R.T.: 5.105 min  
 Delta R.T.: 0.000 min  
 Response: 10671369  
 Conc: 47.24 ng/ml



#28 AR-1254-3

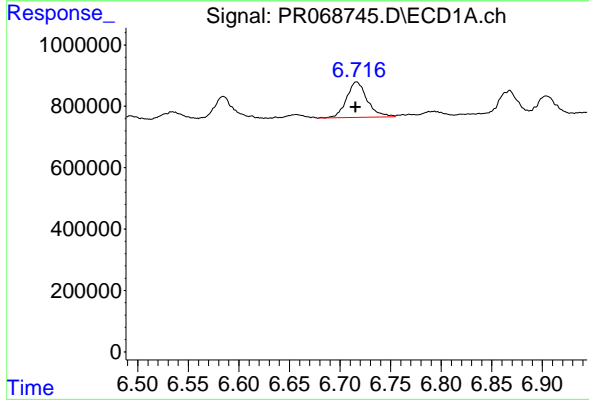
R.T.: 6.405 min  
 Delta R.T.: 0.001 min  
 Response: 2409642  
 Conc: 46.32 ng/ml

Instrument : ECD\_R  
 ClientSampleId : LOQ-SOIL-02-QT4-2024



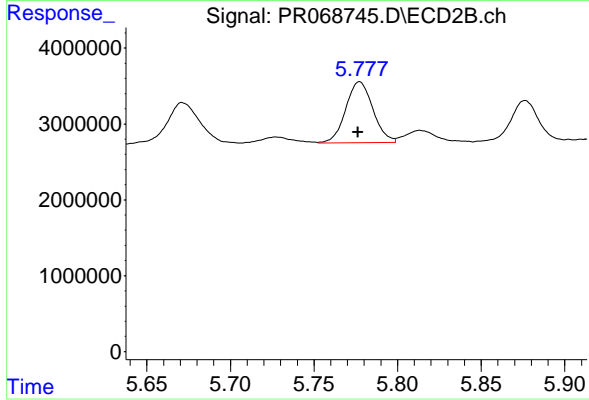
#28 AR-1254-3

R.T.: 5.530 min  
 Delta R.T.: 0.000 min  
 Response: 17184941  
 Conc: 49.41 ng/ml



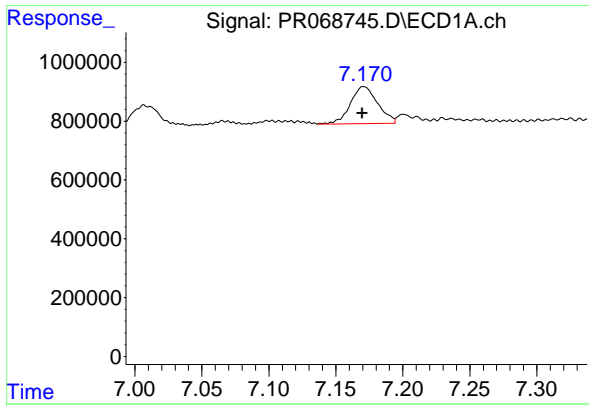
#29 AR-1254-4

R.T.: 6.716 min  
 Delta R.T.: 0.001 min  
 Response: 1652472  
 Conc: 46.18 ng/ml



#29 AR-1254-4

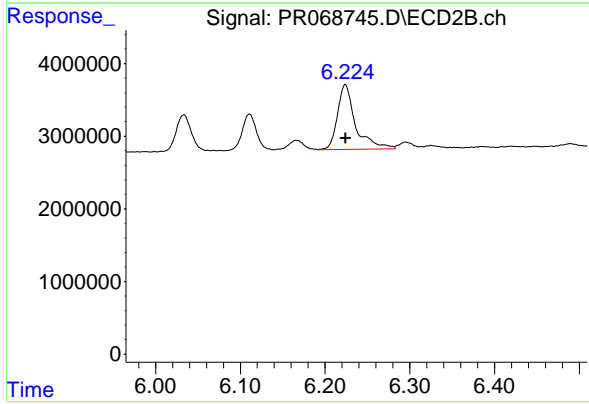
R.T.: 5.777 min  
 Delta R.T.: 0.001 min  
 Response: 9128879  
 Conc: 44.50 ng/ml



#30 AR-1254-5

R.T.: 7.171 min  
Delta R.T.: 0.001 min  
Response: 1795169  
Conc: 45.16 ng/ml

Instrument :  
ECD\_R  
ClientSampleId :  
LOQ-SOIL-02-QT4-2024



#30 AR-1254-5

R.T.: 6.224 min  
Delta R.T.: 0.000 min  
Response: 13195306  
Conc: 43.95 ng/ml