

Data Path : Z:\pestpcbsrv\HPCHEM1\ECD_R\Data\PR101724\
 Data File : PR068750.D
 Signal(s) : Signal #1: ECD1A.ch Signal #2: ECD2B.ch
 Acq On : 16 Oct 2024 23:04
 Operator : AJ\MA
 Sample : PB164108BL
 Misc :
 ALS Vial : 34 Sample Multiplier: 1

Instrument :
 ECD_R
 ClientSampleId :
 PB164108BL

Integration File signal 1: autoint1.e
 Integration File signal 2: autoint2.e
 Quant Time: Oct 17 01:50:56 2024
 Quant Method : Z:\pestpcbsrv\HPCHEM1\ECD_R\Method\PR101624.M
 Quant Title : GC EXTRACTABLES
 QLast Update : Wed Oct 16 13:42:17 2024
 Response via : Initial Calibration
 Integrator: ChemStation

Volume Inj. : 2 µl
 Signal #1 Phase : ZB-MR1 Signal #2 Phase: ZB-MR2
 Signal #1 Info : 30Mx0.32mmx 0.50µ Signal #2 Info : 30M x 0.32mm x 0.25µm

Compound	RT#1	RT#2	Resp#1	Resp#2	ng/ml	ng/ml

System Monitoring Compounds						
1) SA Tetrachlo...	3.648	2.979	17497629	109.9E6	18.662	19.749
2) SA Decachlor...	9.539	8.270	11417371	82684823	19.787	19.383

Target Compounds

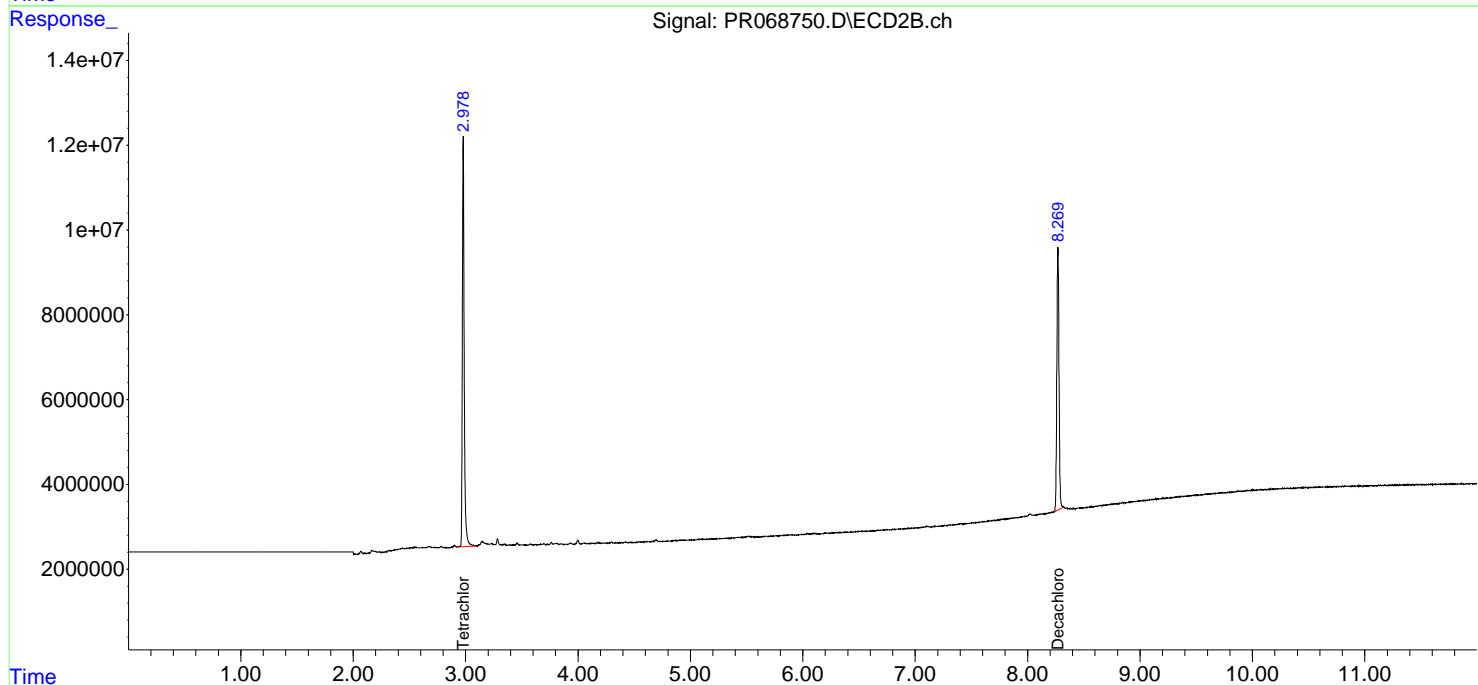
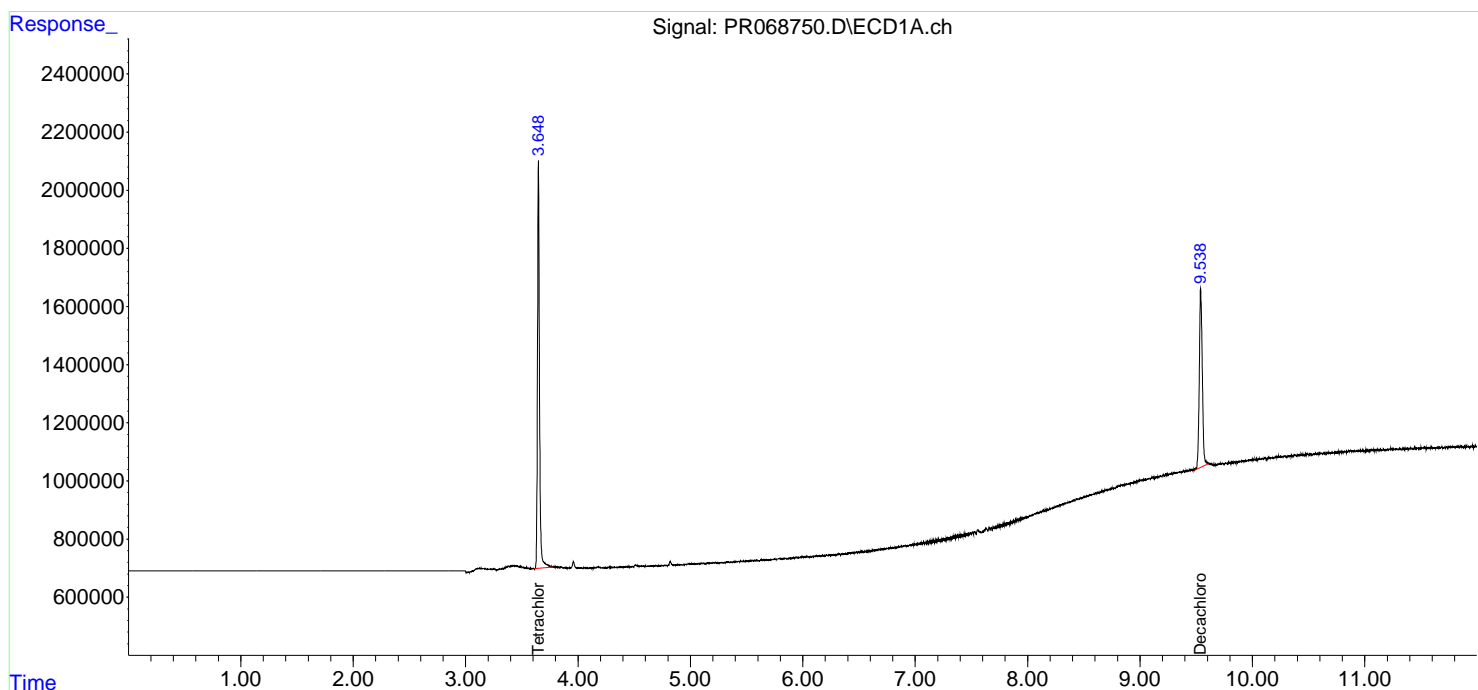
(f)=RT Delta > 1/2 Window (#)=Amounts differ by > 25% (m)=manual int.

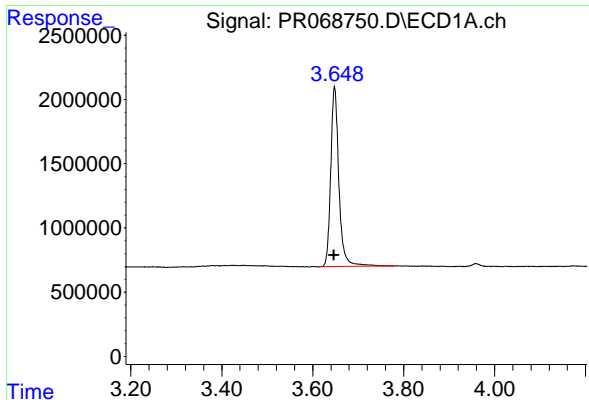
Data Path : Z:\pestpcbsrv\HPCHEM1\ECD_R\Data\PR101724\
Data File : PR068750.D
Signal(s) : Signal #1: ECD1A.ch Signal #2: ECD2B.ch
Acq On : 16 Oct 2024 23:04
Operator : AJ\MA
Sample : PB164108BL
Misc :
ALS Vial : 34 Sample Multiplier: 1

Instrument :
ECD_R
ClientSampleId :
PB164108BL

Integration File signal 1: autoint1.e
Integration File signal 2: autoint2.e
Quant Time: Oct 17 01:50:56 2024
Quant Method : Z:\pestpcbsrv\HPCHEM1\ECD_R\Method\PR101624.M
Quant Title : GC EXTRACTABLES
QLast Update : Wed Oct 16 13:42:17 2024
Response via : Initial Calibration
Integrator: ChemStation

Volume Inj. : 2 µl
Signal #1 Phase : ZB-MR1 Signal #2 Phase: ZB-MR2
Signal #1 Info : 30Mx0.32mmx 0.50µm Signal #2 Info : 30M x 0.32mm x 0.25µm

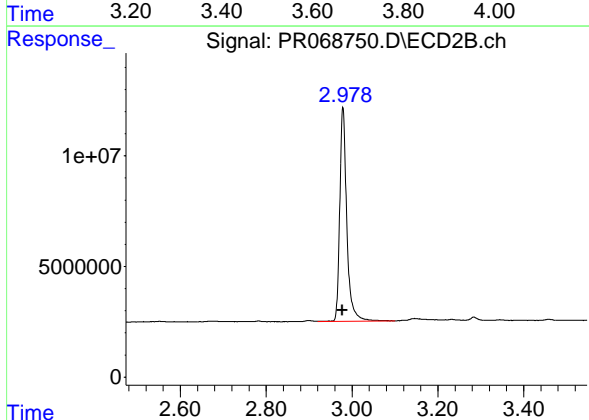




#1 Tetrachloro-m-xylene

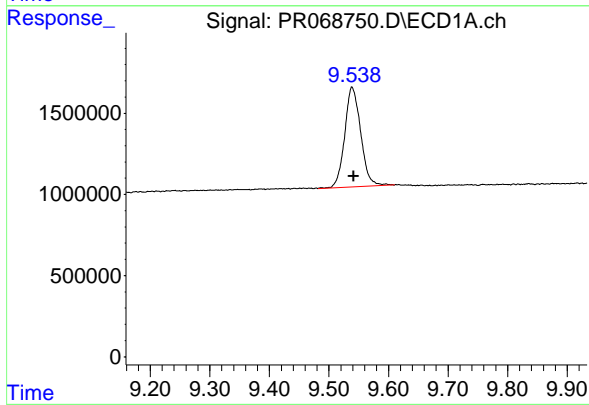
R.T.: 3.648 min
 Delta R.T.: 0.001 min
 Response: 17497629
 Conc: 18.66 ng/ml

Instrument :
 ECD_R
 ClientSampleId :
 PB164108BL



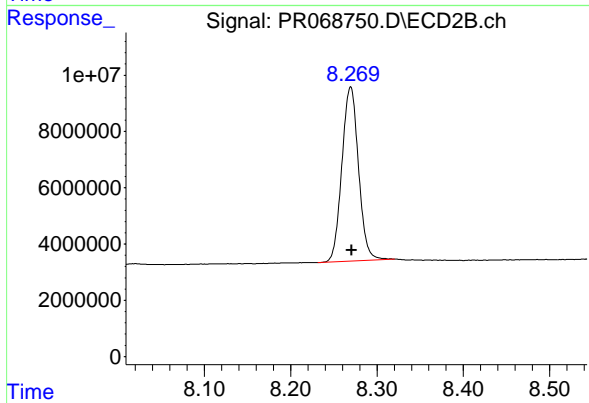
#1 Tetrachloro-m-xylene

R.T.: 2.979 min
 Delta R.T.: 0.001 min
 Response: 109876967
 Conc: 19.75 ng/ml



#2 Decachlorobiphenyl

R.T.: 9.539 min
 Delta R.T.: -0.002 min
 Response: 11417371
 Conc: 19.79 ng/ml



#2 Decachlorobiphenyl

R.T.: 8.270 min
 Delta R.T.: -0.001 min
 Response: 82684823
 Conc: 19.38 ng/ml