

Data Path : Z:\pestpcbsrv\HPCHEM1\ECD\_R\Data\PR101724\  
 Data File : PR068798.D  
 Signal(s) : Signal #1: ECD1A.ch Signal #2: ECD2B.ch  
 Acq On : 17 Oct 2024 10:48  
 Operator : AJ\MA  
 Sample : P4368-09  
 Misc : AR1268 MDL 25 PPB  
 ALS Vial : 74 Sample Multiplier: 1

**Instrument :**  
 ECD\_R  
**ClientSampleId :**  
 MDL-WATER-03-QT4-2024

**Manual Integrations**  
**APPROVED**

Reviewed By :Yogesh Patel 10/17/2024  
 Supervised By :Ankita Jodhani 10/17/2024

Integration File signal 1: autoint1.e  
 Integration File signal 2: autoint2.e  
 Quant Time: Oct 17 14:09:37 2024  
 Quant Method : Z:\pestpcbsrv\HPCHEM1\ECD\_R\Method\PR101624.M  
 Quant Title : GC EXTRACTABLES  
 QLast Update : Wed Oct 16 13:42:17 2024  
 Response via : Initial Calibration  
 Integrator: ChemStation

Volume Inj. : 2 µl  
 Signal #1 Phase : ZB-MR1 Signal #2 Phase: ZB-MR2  
 Signal #1 Info : 30Mx0.32mmx 0.50µ Signal #2 Info : 30M x 0.32mm x 0.25µm

Compound	RT#1	RT#2	Resp#1	Resp#2	ng/ml	ng/ml
-----						
System Monitoring Compounds						
1) SA Tetrachlo...	3.647	2.978	16217557	102.0E6	17.297	18.331
2) SA Decachlor...	9.538	8.267	11658666	84100872	20.205	19.715
Target Compounds						
41) L9 AR-1268-1	8.136	7.115	2114507	15003721	23.865m	23.829
42) L9 AR-1268-2	8.228	7.185	1832768	13365359	22.853	23.031
43) L9 AR-1268-3	8.444	7.407	1575284	11792858	23.445	23.731
44) L9 AR-1268-4	8.848	7.721	530193	4364995	19.367	20.751
45) L9 AR-1268-5	9.230	8.017	4423642	34461974	21.878	21.831
-----						

(f)=RT Delta > 1/2 Window (#)=Amounts differ by > 25% (m)=manual int.

Data Path : Z:\pestpcbsrv\HPCHEM1\ECD\_R\Data\PR101724\  
 Data File : PR068798.D  
 Signal(s) : Signal #1: ECD1A.ch Signal #2: ECD2B.ch  
 Acq On : 17 Oct 2024 10:48  
 Operator : AJ\MA  
 Sample : P4368-09  
 Misc : AR1268 MDL 25 PPB  
 ALS Vial : 74 Sample Multiplier: 1

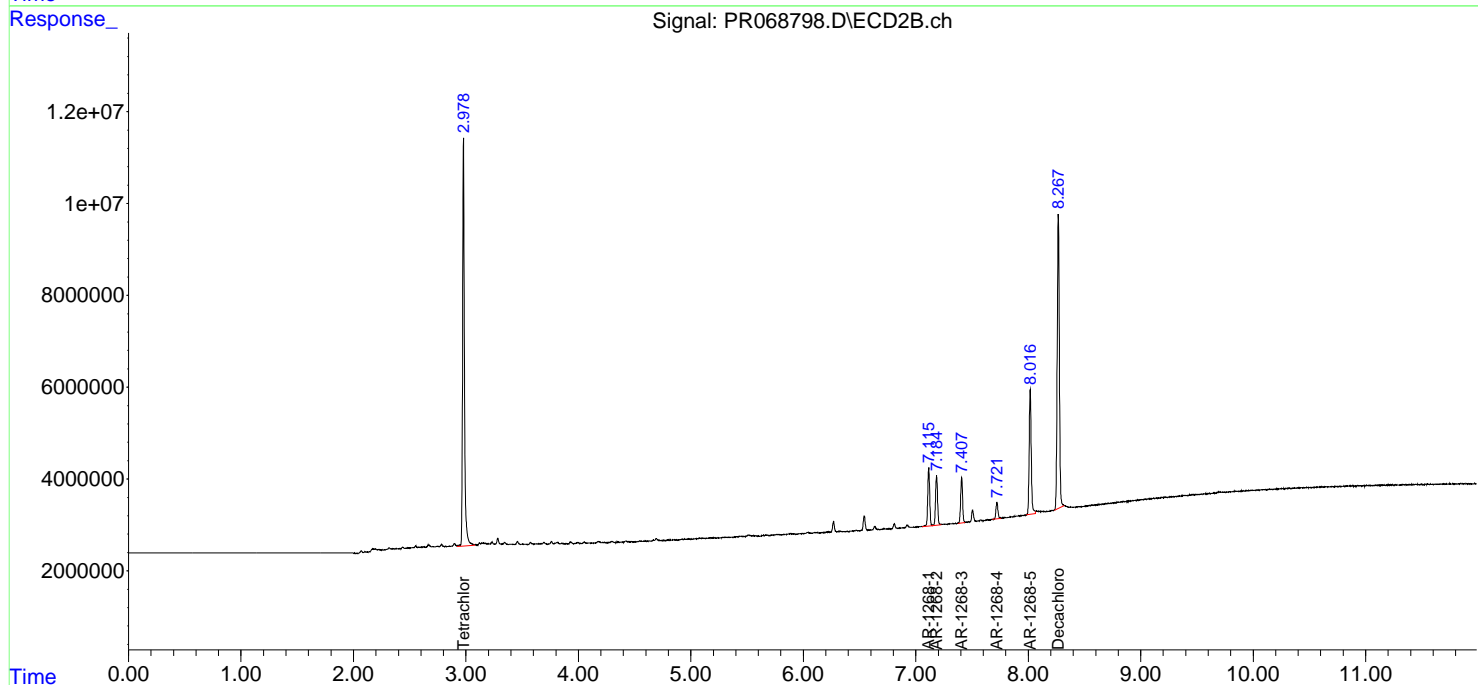
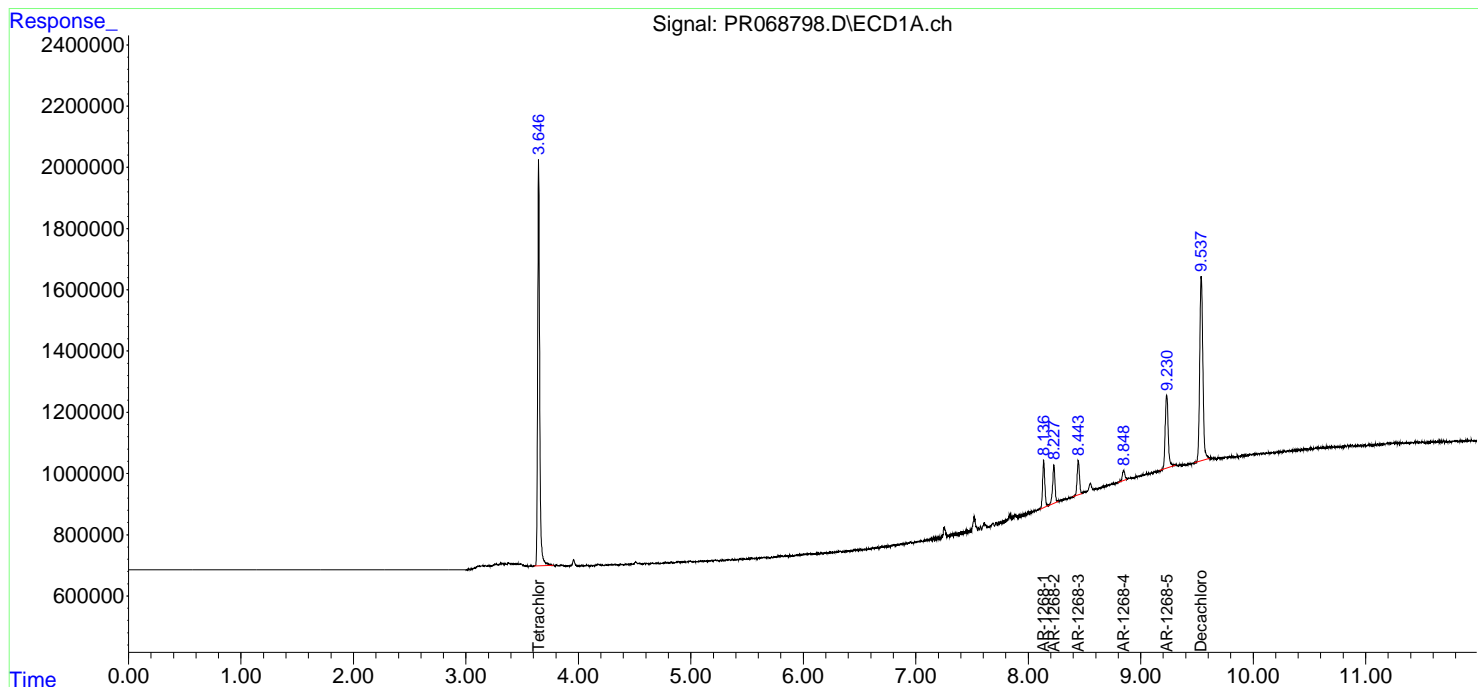
**Instrument :**  
 ECD\_R  
**ClientSampleId :**  
 MDL-WATER-03-QT4-2024

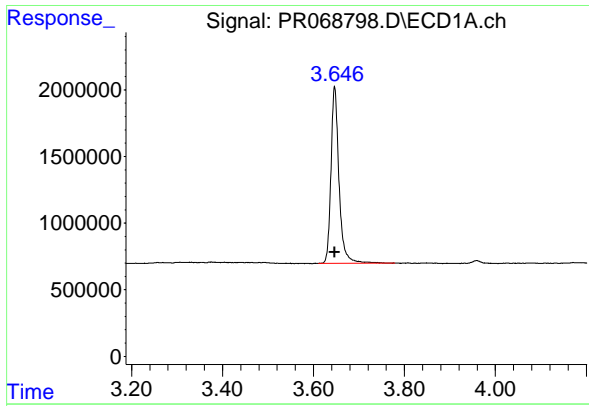
**Manual Integrations**  
**APPROVED**

Reviewed By :Yogesh Patel 10/17/2024  
 Supervised By :Ankita Jodhani 10/17/2024

Integration File signal 1: autoint1.e  
 Integration File signal 2: autoint2.e  
 Quant Time: Oct 17 14:09:37 2024  
 Quant Method : Z:\pestpcbsrv\HPCHEM1\ECD\_R\Method\PR101624.M  
 Quant Title : GC EXTRACTABLES  
 QLast Update : Wed Oct 16 13:42:17 2024  
 Response via : Initial Calibration  
 Integrator: ChemStation

Volume Inj. : 2 µl  
 Signal #1 Phase : ZB-MR1 Signal #2 Phase: ZB-MR2  
 Signal #1 Info : 30Mx0.32mmx 0.50µm Signal #2 Info : 30M x 0.32mm x 0.25µm





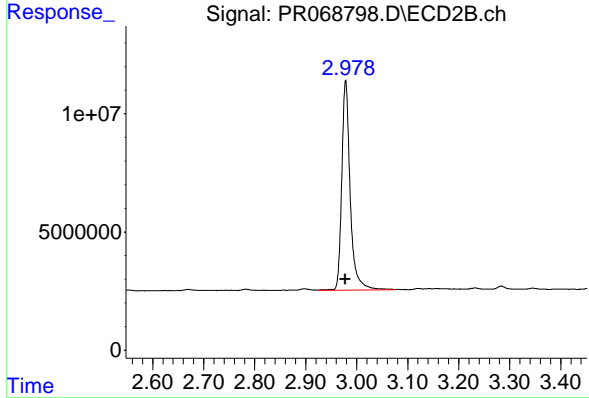
#1 Tetrachloro-m-xylene

R.T.: 3.647 min  
 Delta R.T.: 0.000 min  
 Response: 16217557  
 Conc: 17.30 ng/ml

Instrument : ECD\_R  
 Client Sample Id : MDL-WATER-03-QT4-2024

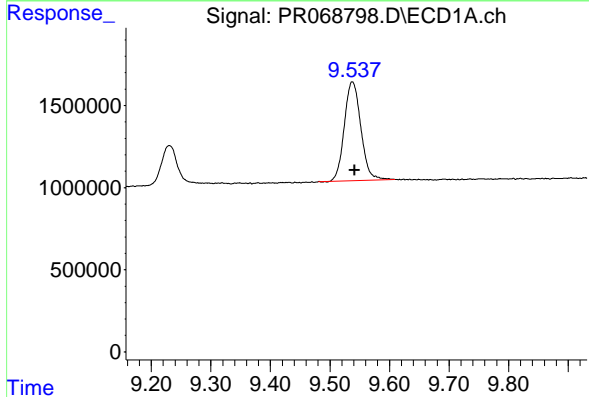
Manual Integrations  
 APPROVED

Reviewed By :Yogesh Patel 10/17/2024  
 Supervised By :Ankita Jodhani 10/17/2024



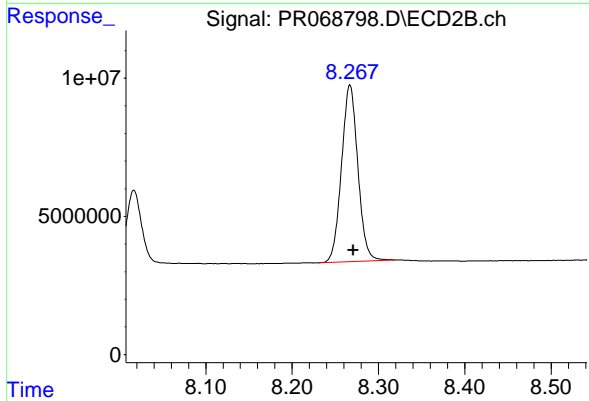
#1 Tetrachloro-m-xylene

R.T.: 2.978 min  
 Delta R.T.: 0.000 min  
 Response: 101990676  
 Conc: 18.33 ng/ml



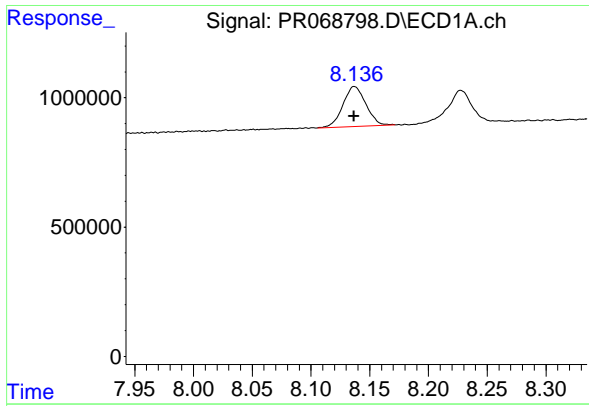
#2 Decachlorobiphenyl

R.T.: 9.538 min  
 Delta R.T.: -0.004 min  
 Response: 11658666  
 Conc: 20.20 ng/ml



#2 Decachlorobiphenyl

R.T.: 8.267 min  
 Delta R.T.: -0.004 min  
 Response: 84100872  
 Conc: 19.71 ng/ml



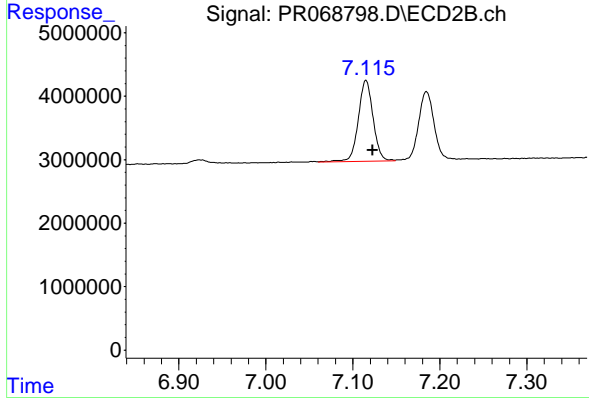
#41 AR-1268-1

R.T.: 8.136 min  
 Delta R.T.: 0.000 min  
 Response: 2114507  
 Conc: 23.86 ng/ml

Instrument : ECD\_R  
 ClientSampleId : MDL-WATER-03-QT4-2024

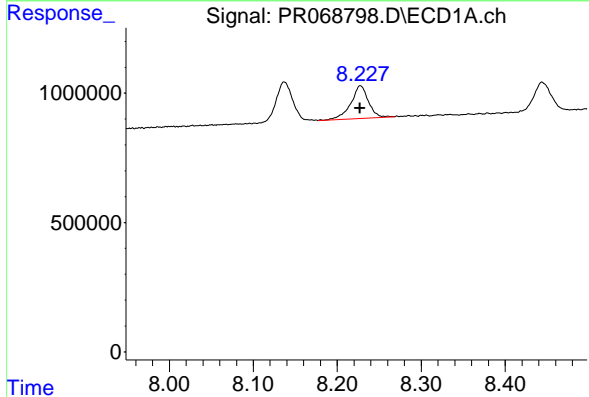
Manual Integrations  
 APPROVED

Reviewed By :Yogesh Patel 10/17/2024  
 Supervised By :Ankita Jodhani 10/17/2024



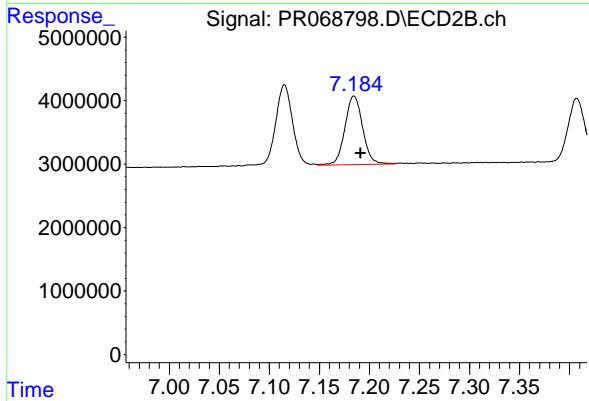
#41 AR-1268-1

R.T.: 7.115 min  
 Delta R.T.: -0.008 min  
 Response: 15003721  
 Conc: 23.83 ng/ml



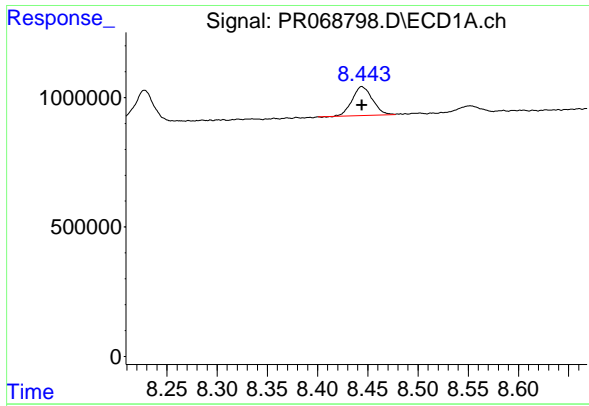
#42 AR-1268-2

R.T.: 8.228 min  
 Delta R.T.: 0.000 min  
 Response: 1832768  
 Conc: 22.85 ng/ml



#42 AR-1268-2

R.T.: 7.185 min  
 Delta R.T.: -0.007 min  
 Response: 13365359  
 Conc: 23.03 ng/ml



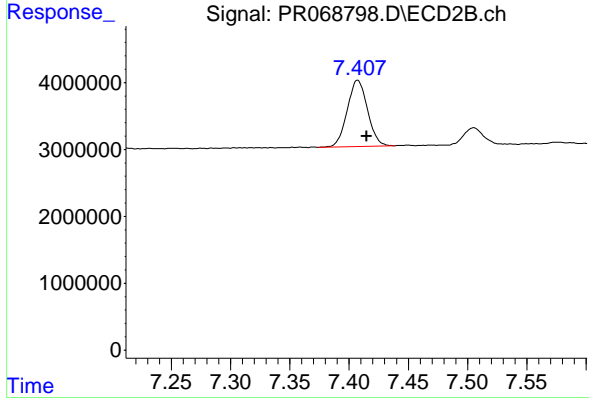
#43 AR-1268-3

R.T.: 8.444 min  
 Delta R.T.: 0.000 min  
 Response: 1575284  
 Conc: 23.45 ng/ml

Instrument : ECD\_R  
 Client Sample Id : MDL-WATER-03-QT4-2024

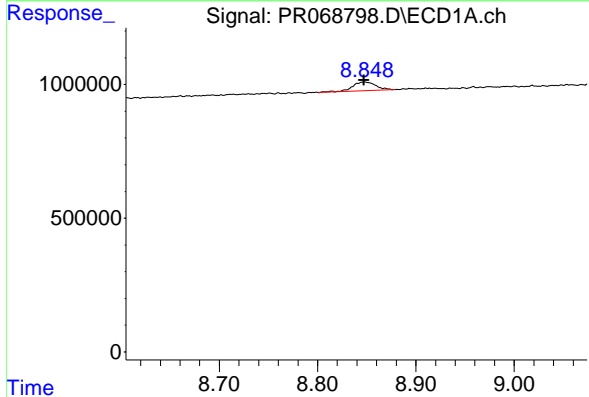
Manual Integrations  
 APPROVED

Reviewed By :Yogesh Patel 10/17/2024  
 Supervised By :Ankita Jodhani 10/17/2024



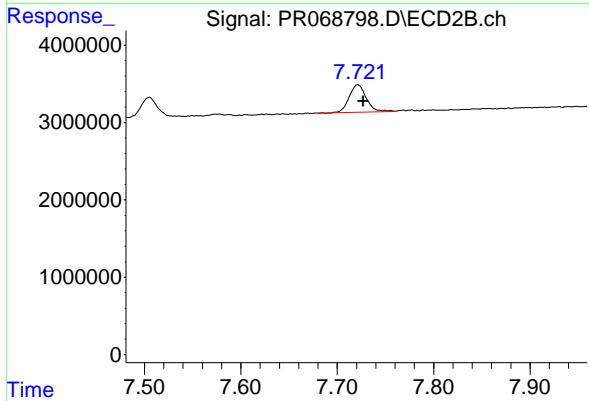
#43 AR-1268-3

R.T.: 7.407 min  
 Delta R.T.: -0.008 min  
 Response: 11792858  
 Conc: 23.73 ng/ml



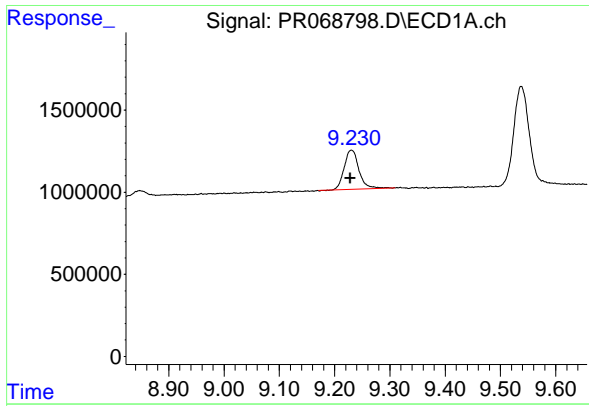
#44 AR-1268-4

R.T.: 8.848 min  
 Delta R.T.: 0.001 min  
 Response: 530193  
 Conc: 19.37 ng/ml



#44 AR-1268-4

R.T.: 7.721 min  
 Delta R.T.: -0.006 min  
 Response: 4364995  
 Conc: 20.75 ng/ml



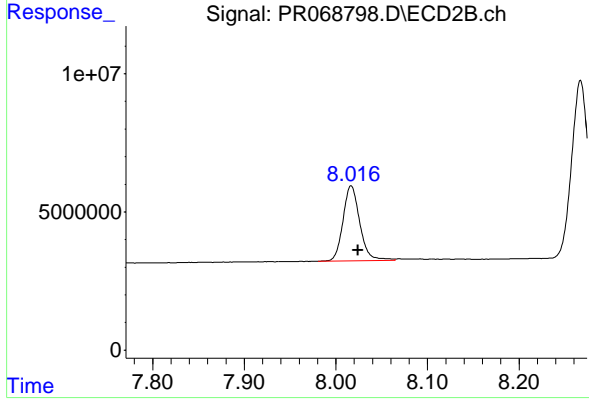
#45 AR-1268-5

R.T.: 9.230 min  
 Delta R.T.: 0.002 min  
 Response: 4423642  
 Conc: 21.88 ng/ml

Instrument : ECD\_R  
 Client Sample Id : MDL-WATER-03-QT4-2024

Manual Integrations  
 APPROVED

Reviewed By :Yogesh Patel 10/17/2024  
 Supervised By :Ankita Jodhani 10/17/2024



#45 AR-1268-5

R.T.: 8.017 min  
 Delta R.T.: -0.008 min  
 Response: 34461974  
 Conc: 21.83 ng/ml