

Data Path : Z:\pestpcbsrv\HPCHEM1\ECD\_R\Data\PR101822\  
 Data File : PR057469.D  
 Signal(s) : Signal #1: ECD1A.ch Signal #2: ECD2B.ch  
 Acq On : 18 Oct 2022 17:55  
 Operator : AJ\MA  
 Sample : AR1248CCC500  
 Misc :  
 ALS Vial : 5 Sample Multiplier: 1

Instrument :  
 ECD\_R  
 ClientSampleId :  
 AR1248CCC500

Integration File signal 1: autoint1.e  
 Integration File signal 2: autoint2.e  
 Quant Time: Oct 19 01:51:51 2022  
 Quant Method : Z:\pestpcbsrv\HPCHEM1\ECD\_R\Method\PR101222.M  
 Quant Title : GC EXTRACTABLES  
 QLast Update : Thu Oct 13 04:58:31 2022  
 Response via : Initial Calibration  
 Integrator: ChemStation

Volume Inj. : 2 µl  
 Signal #1 Phase : ZB-MR1 Signal #2 Phase: ZB-MR2  
 Signal #1 Info : 30Mx0.32mmx 0.50µ Signal #2 Info : 30M x 0.32mm x 0.25µm

Compound	RT#1	RT#2	Resp#1	Resp#2	ng/ml	ng/ml
-----						
System Monitoring Compounds						
1) SA Tetrachlo...	3.611	2.881	174.1E6	68233716	50.265	48.432
2) SA Decachlor...	9.489	8.076	122.8E6	79580794	46.669	43.159
Target Compounds						
21) L5 AR-1248-1	4.830	3.981	37146685	12650719	520.089	460.736
22) L5 AR-1248-2	5.121	4.225	43115776	15875851	492.506	453.193
23) L5 AR-1248-3	5.333	4.265	50862885	16538722	489.709	462.124
24) L5 AR-1248-4	5.766	4.439	60395040	21005962	528.880	464.483
25) L5 AR-1248-5	5.805	4.845	56697720	23209096	520.132	483.381
-----						

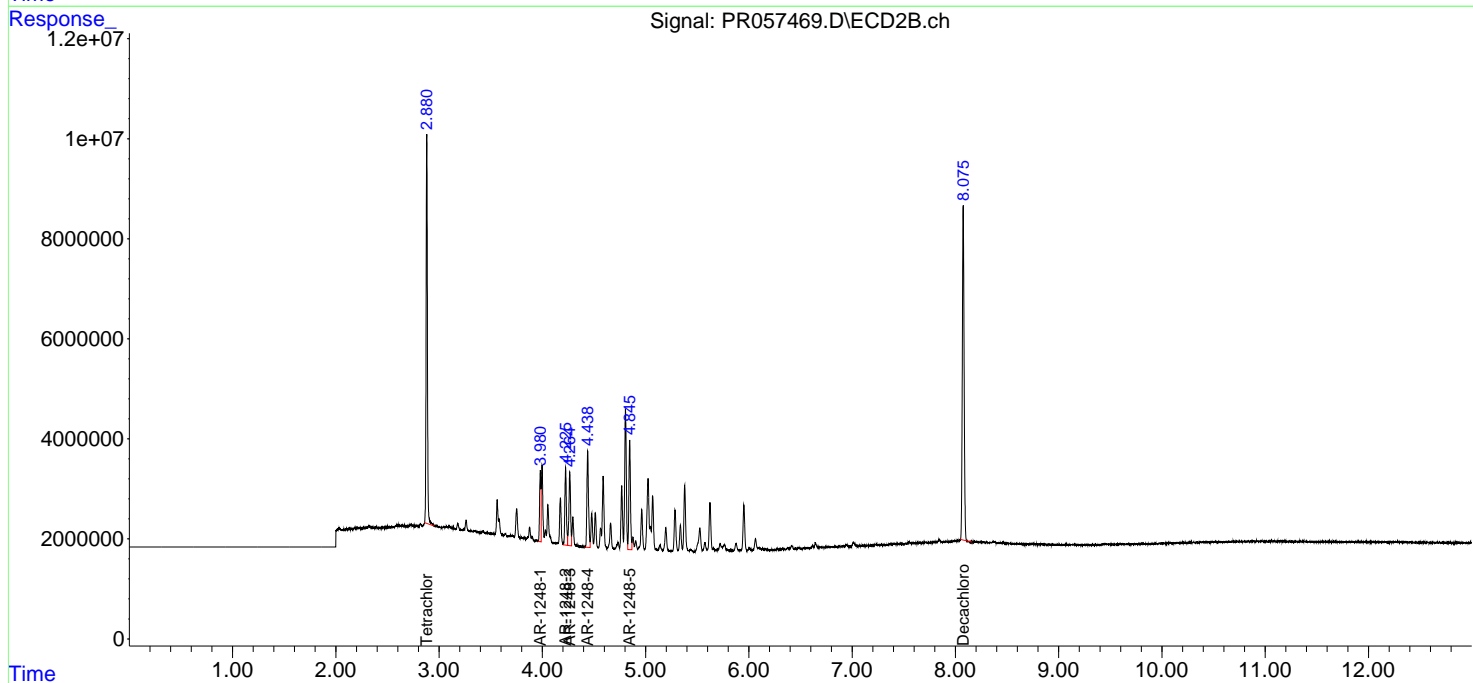
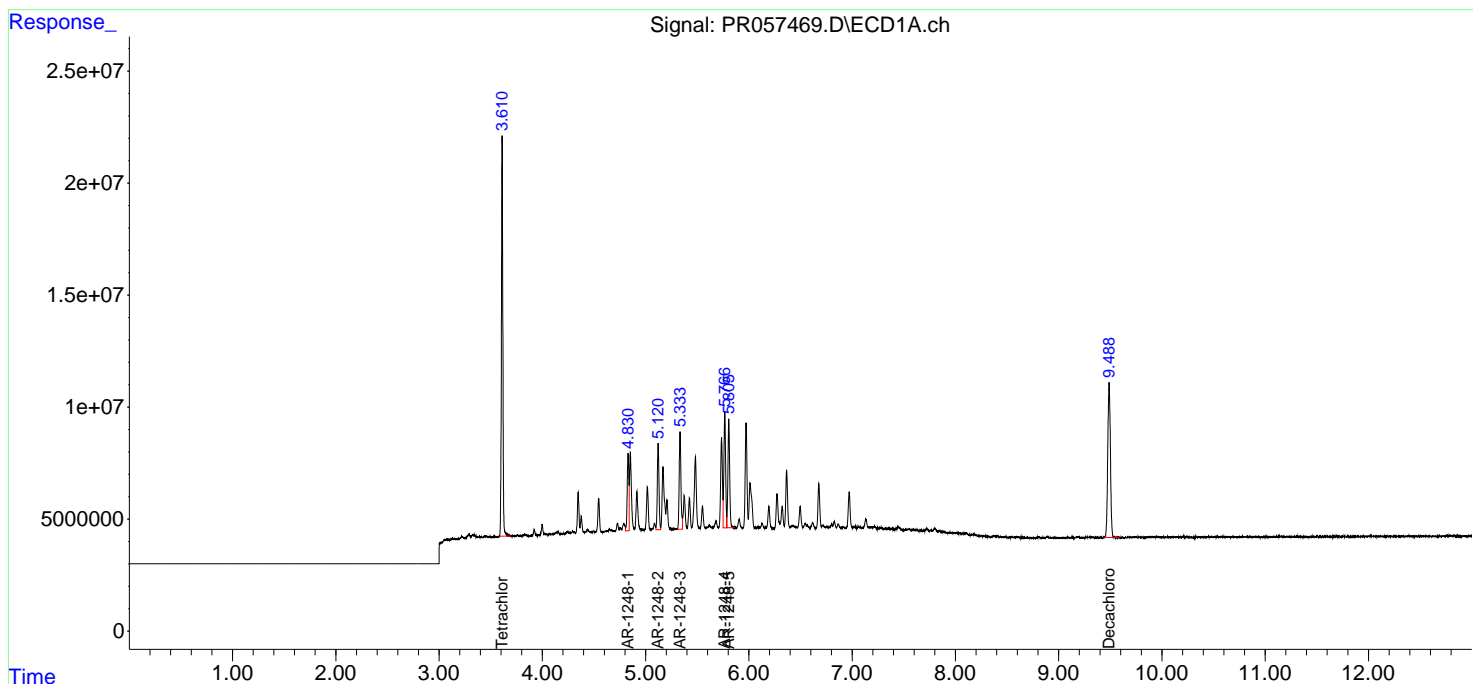
(f)=RT Delta > 1/2 Window (#)=Amounts differ by > 25% (m)=manual int.

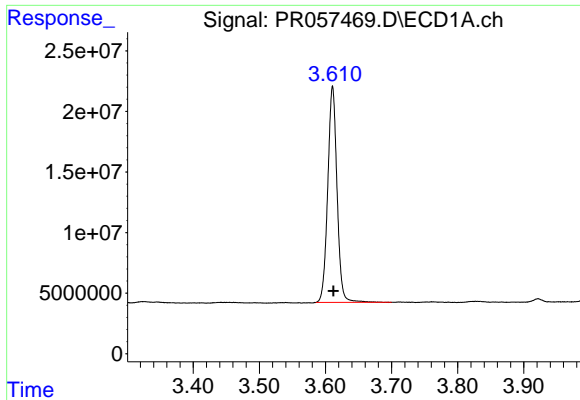
Data Path : Z:\pestpcbsrv\HPCHEM1\ECD\_R\Data\PR101822\  
 Data File : PR057469.D  
 Signal(s) : Signal #1: ECD1A.ch Signal #2: ECD2B.ch  
 Acq On : 18 Oct 2022 17:55  
 Operator : AJ\MA  
 Sample : AR1248CCC500  
 Misc :  
 ALS Vial : 5 Sample Multiplier: 1

Instrument :  
 ECD\_R  
 ClientSampleId :  
 AR1248CCC500

Integration File signal 1: autoint1.e  
 Integration File signal 2: autoint2.e  
 Quant Time: Oct 19 01:51:51 2022  
 Quant Method : Z:\pestpcbsrv\HPCHEM1\ECD\_R\Method\PR101222.M  
 Quant Title : GC EXTRACTABLES  
 QLast Update : Thu Oct 13 04:58:31 2022  
 Response via : Initial Calibration  
 Integrator: ChemStation

Volume Inj. : 2 µl  
 Signal #1 Phase : ZB-MR1 Signal #2 Phase: ZB-MR2  
 Signal #1 Info : 30Mx0.32mmx 0.50µ Signal #2 Info : 30M x 0.32mm x 0.25µm

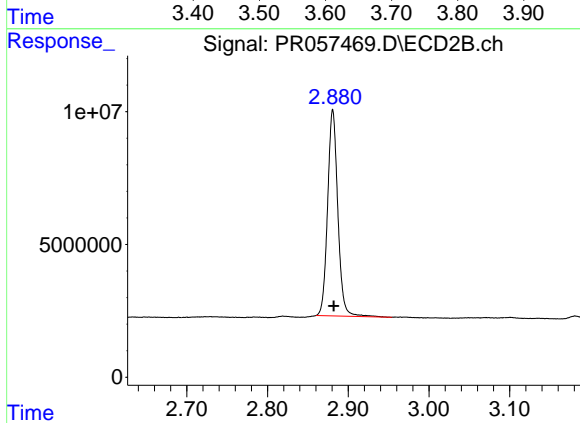




#1 Tetrachloro-m-xylene

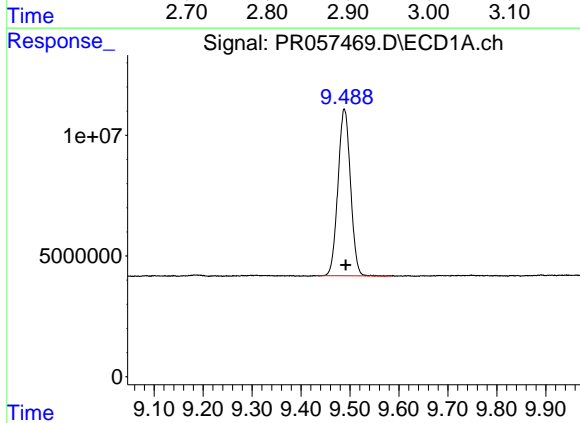
R.T.: 3.611 min  
 Delta R.T.: -0.001 min  
 Response: 174061915  
 Conc: 50.26 ng/ml

Instrument :  
 ECD\_R  
 ClientSampleId :  
 AR1248CCC500



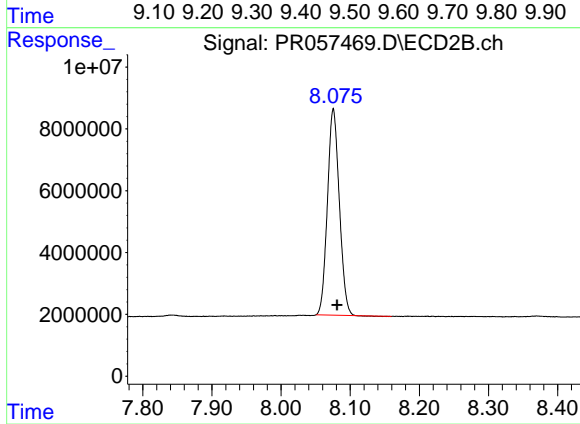
#1 Tetrachloro-m-xylene

R.T.: 2.881 min  
 Delta R.T.: -0.001 min  
 Response: 68233716  
 Conc: 48.43 ng/ml



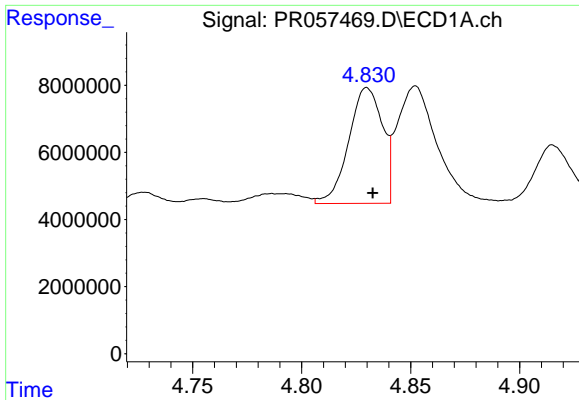
#2 Decachlorobiphenyl

R.T.: 9.489 min  
 Delta R.T.: -0.003 min  
 Response: 122834745  
 Conc: 46.67 ng/ml



#2 Decachlorobiphenyl

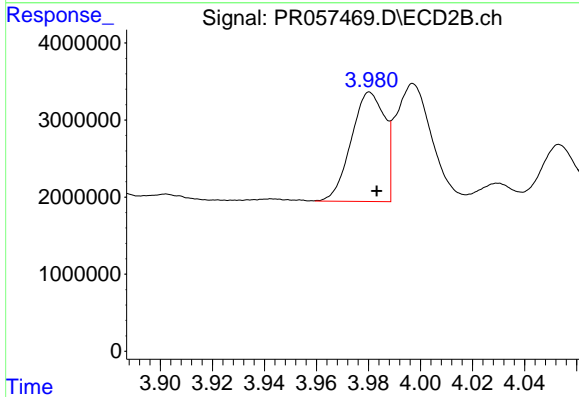
R.T.: 8.076 min  
 Delta R.T.: -0.005 min  
 Response: 79580794  
 Conc: 43.16 ng/ml



#21 AR-1248-1

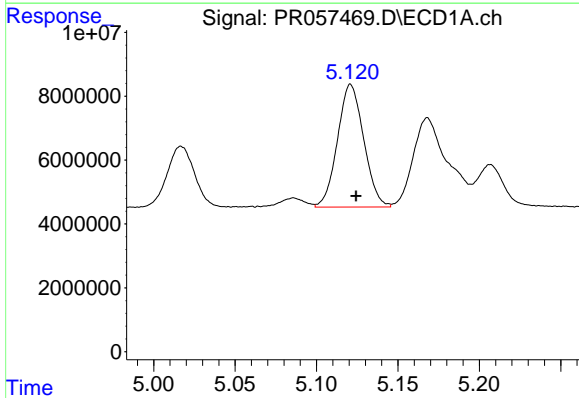
R.T.: 4.830 min  
 Delta R.T.: -0.002 min  
 Response: 37146685  
 Conc: 520.09 ng/ml

Instrument :  
 ECD\_R  
 ClientSampleId :  
 AR1248CCC500



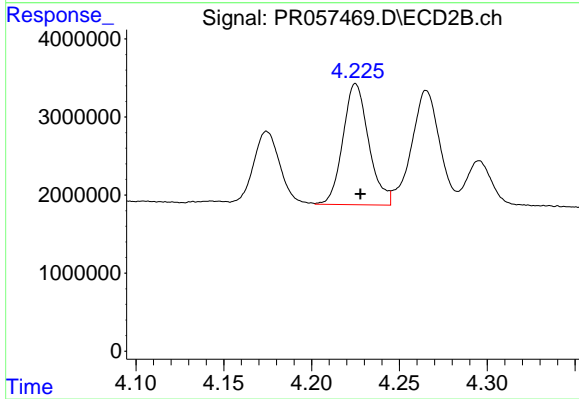
#21 AR-1248-1

R.T.: 3.981 min  
 Delta R.T.: -0.003 min  
 Response: 12650719  
 Conc: 460.74 ng/ml



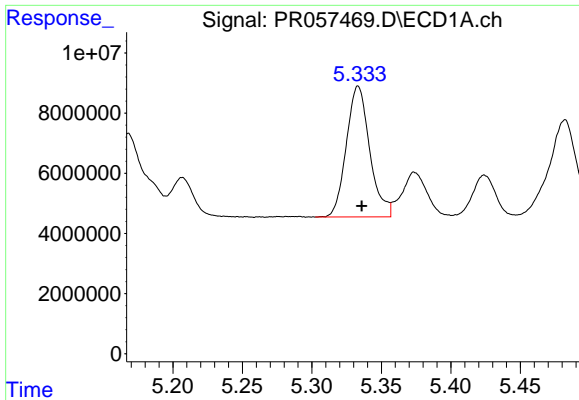
#22 AR-1248-2

R.T.: 5.121 min  
 Delta R.T.: -0.003 min  
 Response: 43115776  
 Conc: 492.51 ng/ml



#22 AR-1248-2

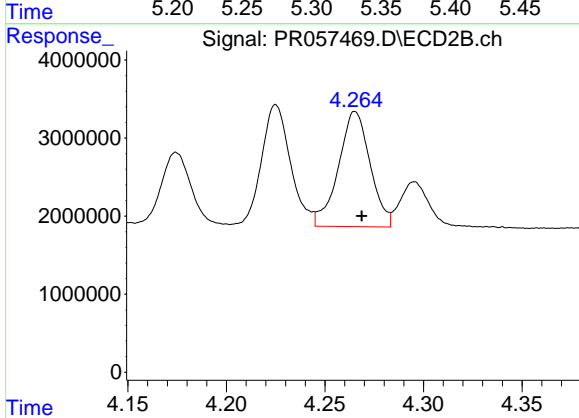
R.T.: 4.225 min  
 Delta R.T.: -0.003 min  
 Response: 15875851  
 Conc: 453.19 ng/ml



#23 AR-1248-3

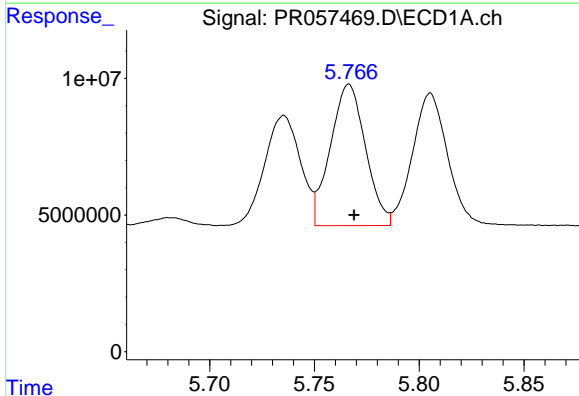
R.T.: 5.333 min  
 Delta R.T.: -0.003 min  
 Response: 50862885  
 Conc: 489.71 ng/ml

Instrument :  
 ECD\_R  
 ClientSampleId :  
 AR1248CCC500



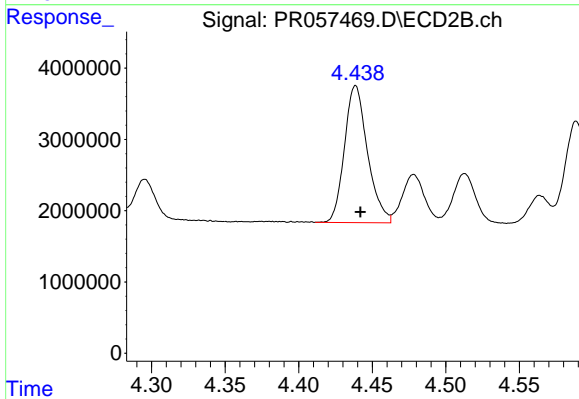
#23 AR-1248-3

R.T.: 4.265 min  
 Delta R.T.: -0.003 min  
 Response: 16538722  
 Conc: 462.12 ng/ml



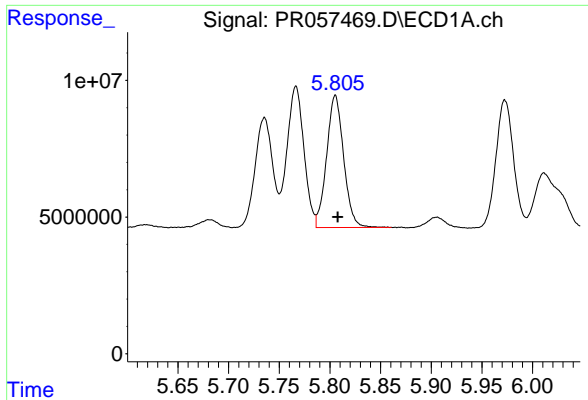
#24 AR-1248-4

R.T.: 5.766 min  
 Delta R.T.: -0.002 min  
 Response: 60395040  
 Conc: 528.88 ng/ml



#24 AR-1248-4

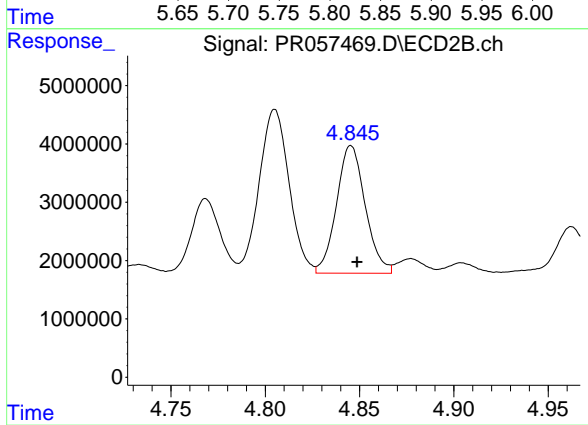
R.T.: 4.439 min  
 Delta R.T.: -0.003 min  
 Response: 21005962  
 Conc: 464.48 ng/ml



#25 AR-1248-5

R.T.: 5.805 min  
Delta R.T.: -0.002 min  
Response: 56697720  
Conc: 520.13 ng/ml

Instrument :  
ECD\_R  
ClientSampleId :  
AR1248CCC500



#25 AR-1248-5

R.T.: 4.845 min  
Delta R.T.: -0.003 min  
Response: 23209096  
Conc: 483.38 ng/ml